



DE VALK
YACHT BROKERS



HANSE 415



DE VALK
YACHT BROKERS

BROKERAGE | CHARTER | BERTHS | FINANCE | INSURANCE | YACHT MANAGEMENT

HANSE 415

BROKER'S COMMENTS

A rare opportunity, This Hanse 415 in an as new condition comes from his first owner (no charter) with only 125 hours on the engine. This well equipped owners version, retractable bow thruster, furling genaker, comprehensive B&G equipment on both steering position and at the chart table. Below deck the master cabin forward and 2 guest cabins aft, separate bathroom with shower and toilet. This Hanse 415 is a perfect family cruiser with all the comfort you need. Viewing is highly recommended!

Henk Sijbranda

SPECIFICATIONS

Dimensions	12.40 x 4.17 x 2.10 (m)	Builder	Hanse Yachtbau GmbH
Built	2015	Cabins	3
Material	GRP	Berths	6
Engine(s)	1 x Volvo Penta D2-40F diesel	Hp/Kw	40.00 (hp), 29.40 (kw)
Asking price	sold (VAT)	Lying	at sales office

CONTACT

Sales office	De Valk Hindeloopen B.V.	Telephone	+31 514 52 40 00
Address	Oosterstrand 1 8713 JS Hindeloopen NL	E-mail	hindeloopen@devalk.nl

DISCLAIMER

These particulars are given in good faith as supplied but cannot be guaranteed.



GENERAL

Model	HANSE 415
Type	sailing yacht
LOA (m)	12,40
LWL (m)	11,40
Beam (m)	4,17
Draft (m)	2,10
Air draft (m)	19,60
Headroom (m)	1,90
Year built	2015
Builder	Hanse Yachtbau GmbH
Country	Germany
Designer	Judel/Vrolijk
Displacement (t)	9,2
Ballast (tonnes)	3,3
CE norm	A
Hull material	GRP
Hull colour	
Hull shape	round-bilged
Keel type	fin keel
Superstructure material	GRP
Deck material	GRP
Deck finish	non-skid moulded in
Superstructure deck finish	non-skid moulded in
Cockpit deck finish	Flexiteak
Antifouling (year)	2020
Window material	polycarbonate
Deckhatch	6x flush design
Fuel tank (litre)	polyethylene Approx. 160 ltr.
Level indicator (fuel tank)	yes
Freshwater tank (litre)	polyethylene Approx. 520 ltr. in two tanks



Level indicator (freshwater)	yes
Blackwater tank (litre)	Approx. 35 ltr.
Blackwater tank extraction	deck extraction + uw line
Wheel steering	chain steering Twin wheel steering system
Emergency tiller	yes

ACCOMMODATION

Cabins	3
Berths	6
Interior	High quality marine plywood, cherry style, satin varnish
Floor	Acacia style
Open cockpit	yes
Saloon	yes
Headroom saloon (m)	2
Heating	diesel ducted hot air Eberspächer
Chart table	yes
Aft Cabin	2x
Galley	yes
Countertop	Quartz black surface
Sink	Double stainless steel sinks
Cooker	2-burner LPG gas stove with oven, gimbaled
Oven	In cooker
Fridge	Extra large 12 V fridge of approx. 130 l, top and front loader with light
Hot water system	220V + engine 22 ltr.
Water pressure system	electrical
Owners cabin	double bed Forward cabin
Bed length (m)	2 mtr.
Wardrobe	hanging/drawers/shelves
Guest cabin 1	double bed Aft cabin
Bed length (m)	2 mtr.



Wardrobe	hanging and shelves
Guest cabin 2	double bed Aft cabin
Bed length (m)	2 mtr.
Wardrobe	hanging and shelves
Bathroom	shared
Toilet	Jabsco
Toilet system	electric
Wash basin	
Shower	Separate shower stall in bathroom

MACHINERY

No of engines	1
Make	Volvo Penta
Type	D2-40F
HP	40
kW	29,40
Fuel	diesel
Year installed	2015
Engine hours	124.6
Engine cooling system	freshwater heat exchanger
Drive	sail-drive
Engine controls	bowden cable
Gearbox	mechanical
Bowthruster	electric Quick TCD 1022 control
Exhaust	watercooled
Propeller type	fixed
Propeller blades	2
Manual bilge pump	yes
Electric bilge pump	yes
Electrical installation	12 / 220 V
Start battery	12 V / 90 Ah AGM



Service battery	12 V / 160 Ah AGM
Windlass battery	12 V / 160 Ah AGM
Battery charger	12 V / 30 Amp.
Shorepower	with cable

NAVIGATION

Compass	Garmin
Depth sounder	Data from: 2x B&G Triton display
Log	Data from: 2x B&G Triton display
Windset	Data from: 2x B&G Triton display
VHF	B&G V50 with AIS
VHF handheld	B&G H50
Autopilot	B&G Triton Pilot controller
Plotter/GPS	B&G
Navigation lights	yes

EQUIPMENT

Sprayhood	yes
Cockpit cushions	yes
Cockpit table	With storage space
Bathing platform	Hinged bathing platform
Boarding ladder	stainless steel
Deck shower	yes
Anchor	Bruce With anchor roller
Anchor chain	yes
Windlass	electrical Quick
Sea railing	wire Stainless steel
Grab rail (superstructure)	stainless steel
Pushpit	yes
Pulpit	yes
Fenders	yes



Mooring lines	yes
Radio	Bose
Speakers in salon	yes

RIGGING

Rigging	9/10-rig, tapered masttop
Standing rigging	wire
Brand mast	Seldén
Material mast	aluminium
Spreaders	2 pair
Mainsail	Approx. 52,50 m ²
Fully battened mainsail	Fully battened
Stoway mast	yes
Genoa	Approx. 34,50 m ²
Genoa furler	Furlex 304S
Gennaker	With own furling system
Self tacking jib installation	yes
Reefing System	main in-mast furling
Backstay adjuster	tackle
Boomvang	gasspring Seldén Rodkicker
Primary sheet winch	2x self-tailing winches 45 AST EVO
Multifunctional winches	2x self-tailing winches 45 AST EVO



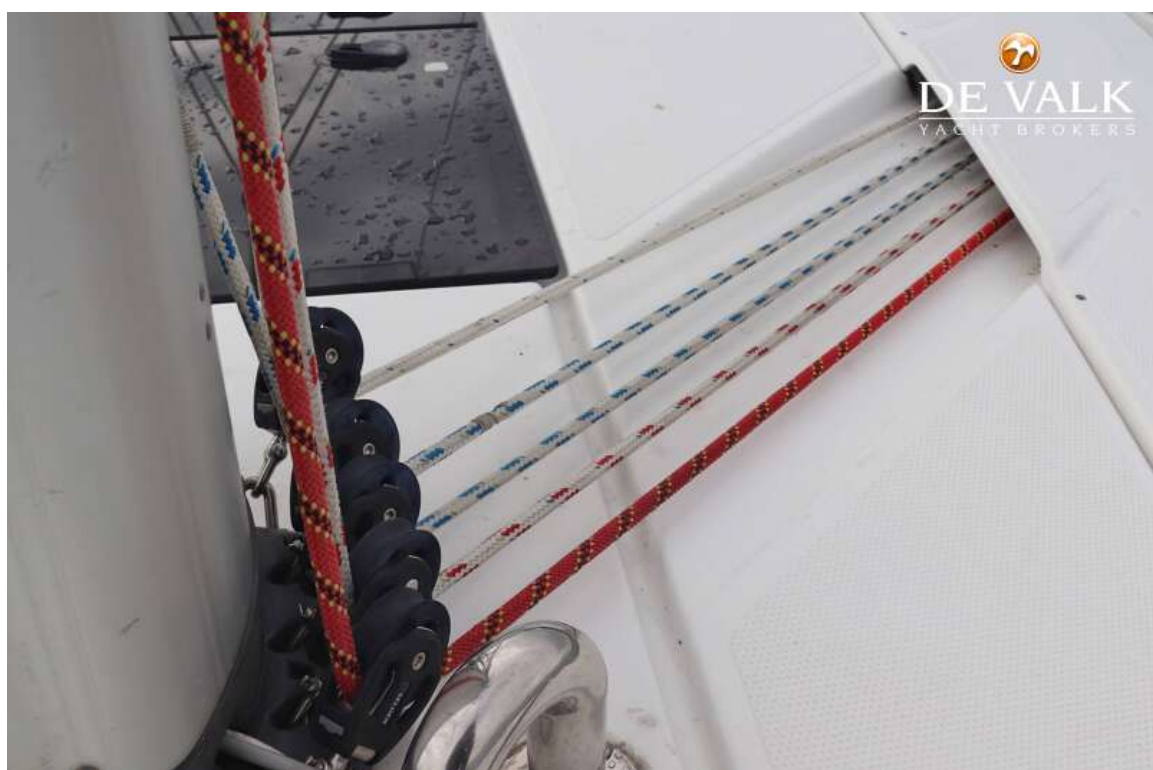
HANSE 415



HANSE 415



HANSE 415



HANSE 415



HANSE 415



HANSE 415



HANSE 415



HANSE 415



HANSE 415



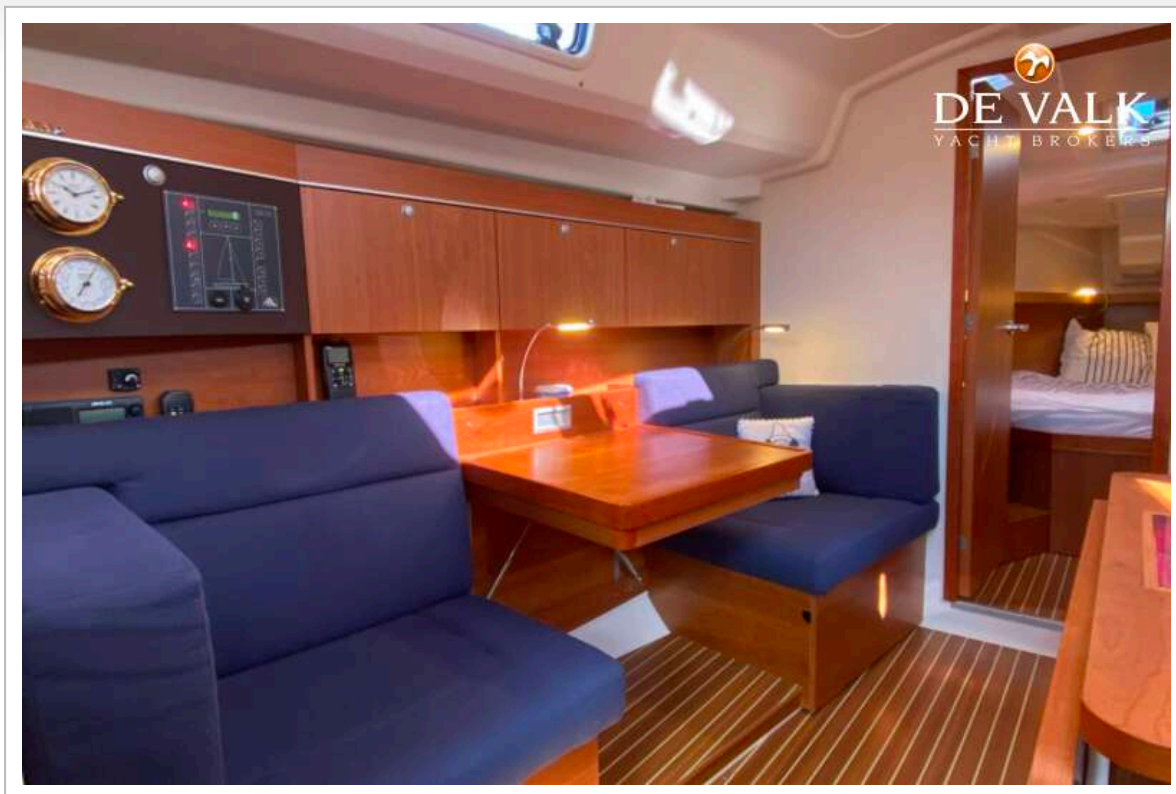
HANSE 415



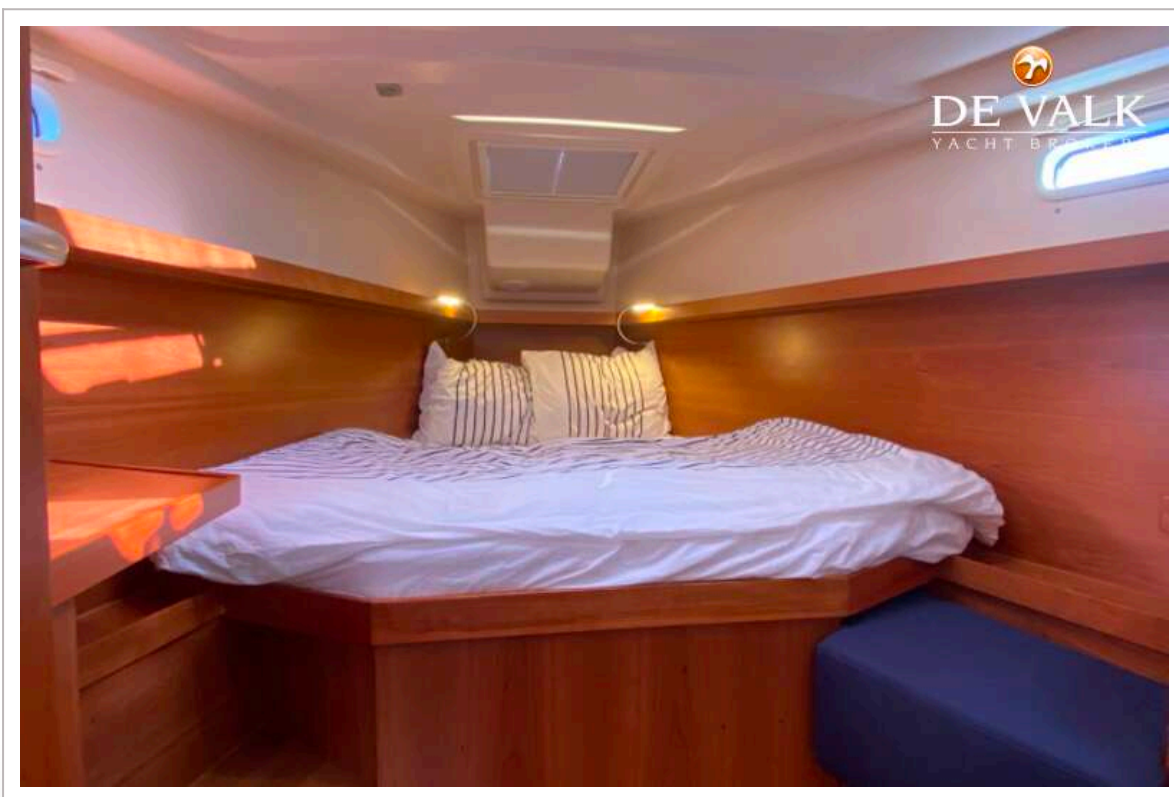
HANSE 415



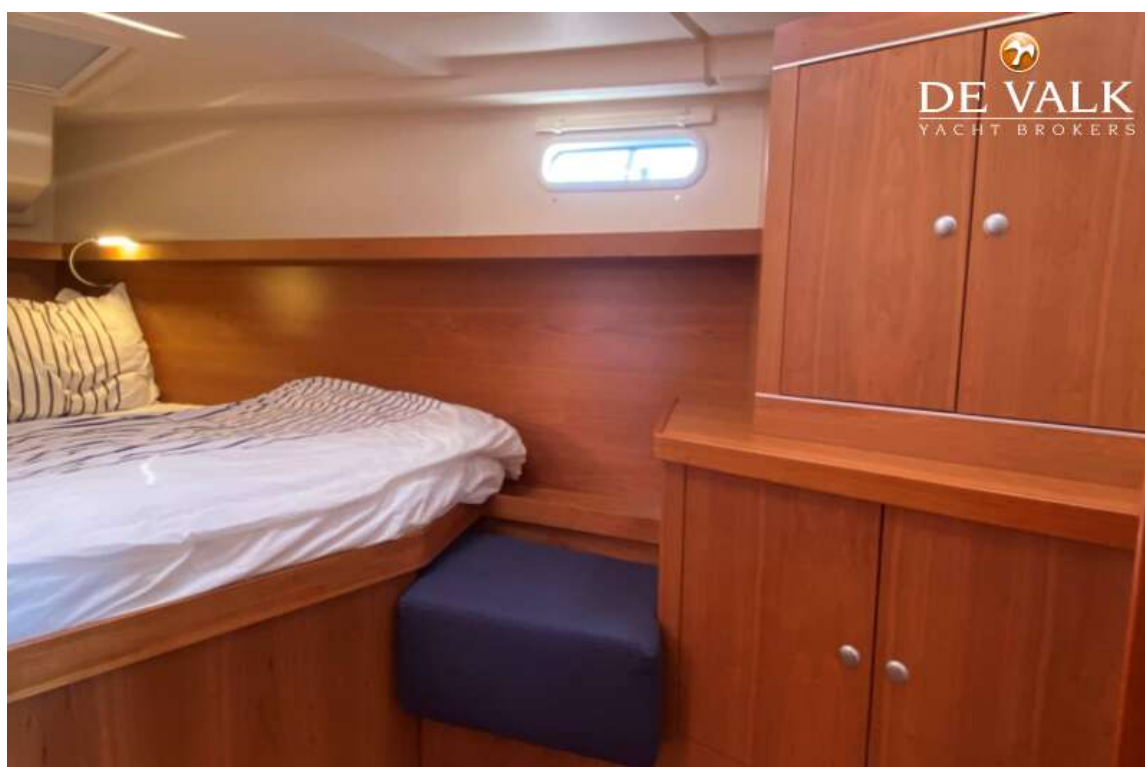
HANSE 415



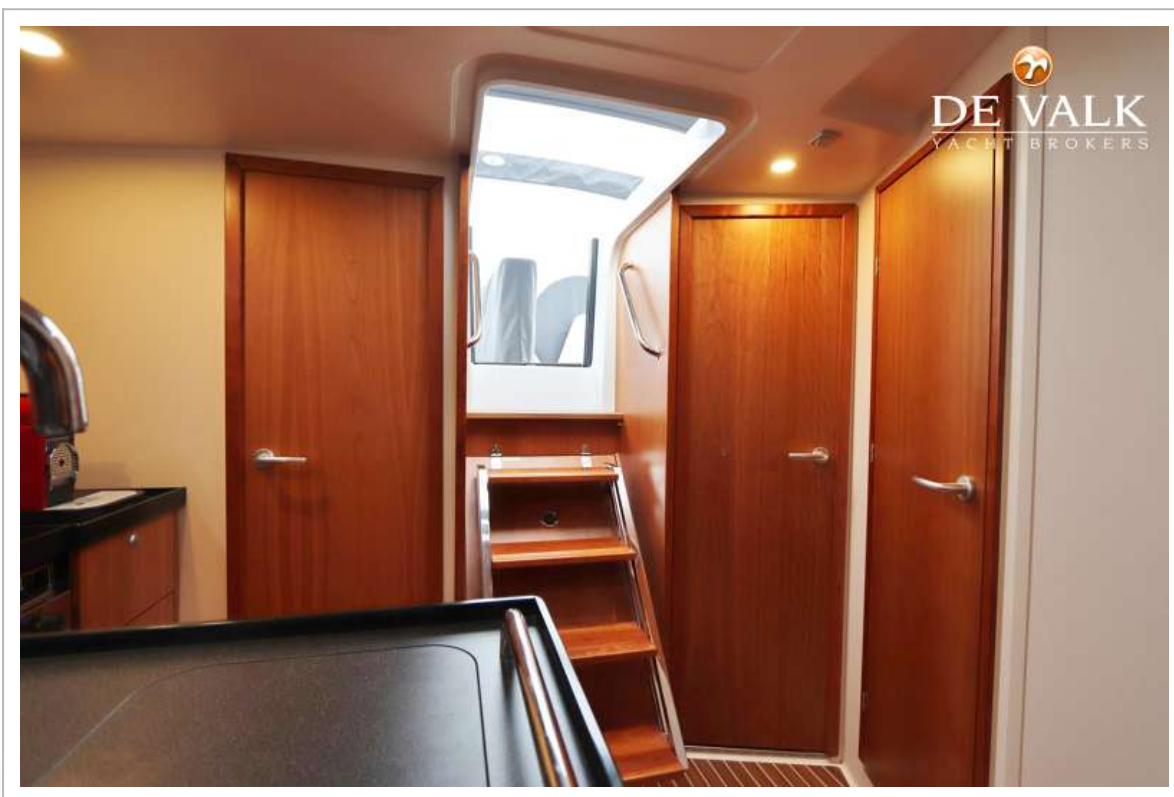
HANSE 415

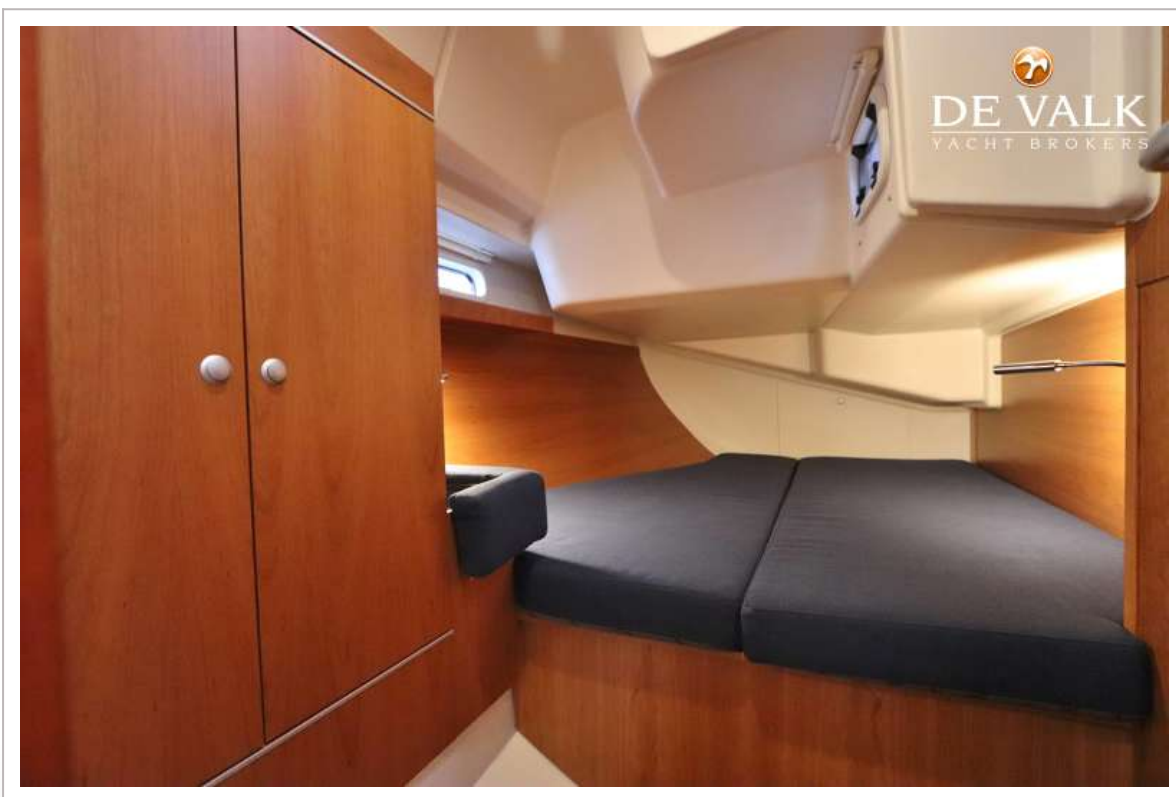


HANSE 415

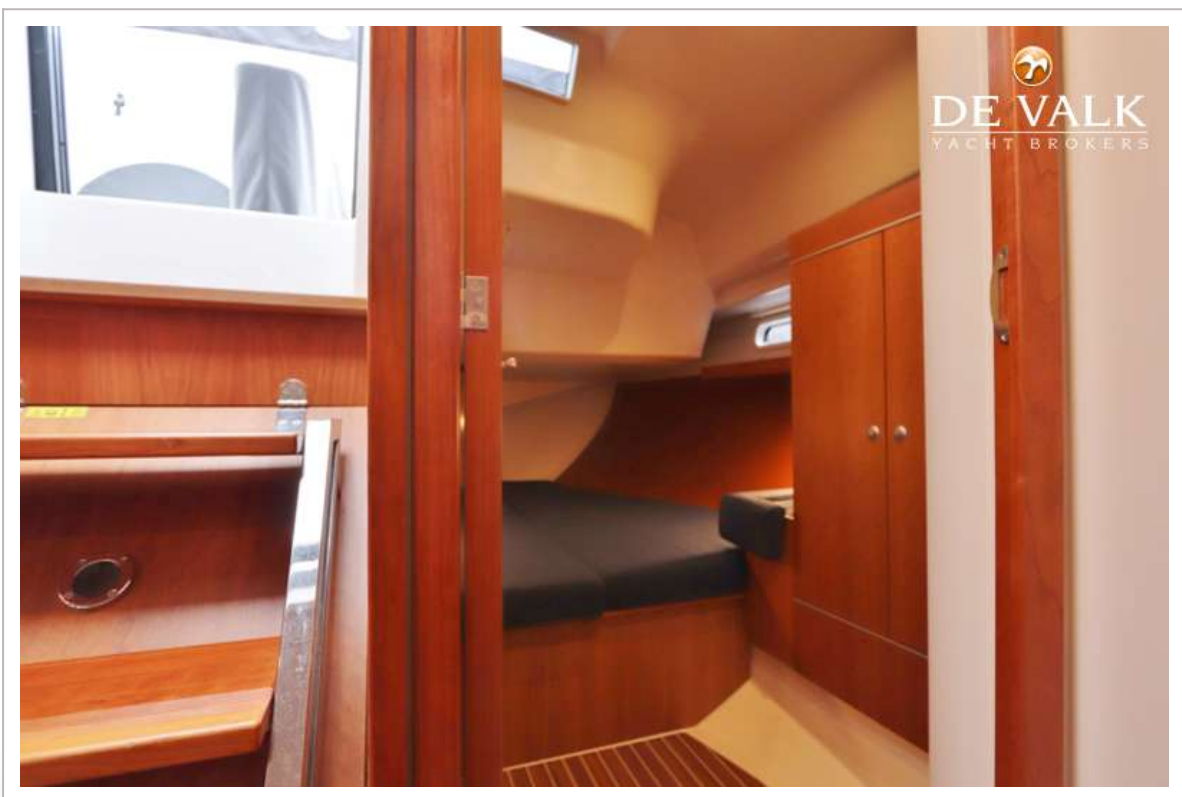


HANSE 415





HANSE 415



HANSE 415

