



HUISMAN 41



BROKER'S COMMENTS

Fantastic robust design from S&S and built by the famous yard Huisman (nowadays Royal Huisman) in The Netherlands. Building no. 2 of in total 6 ever built. Last year she crossed from the Caribbean, but since then not touched due to busy work of owner. We offer a fantastic proven design, but in need for love and attention. In return, when care given, she will reward you with an incredible vessel for many and many years to come. Now very attractively priced considering her present condition. But do not misjudge this vessel, she needs more loving time than money to spent!

Willem Koopmans

SPECIFICATIONS

Dimensions	12.53 x 3.83 x 2.13 (m)	Builder	Huisman Vollenhove
Built	1979	Cabins	2
Material	Aluminium	Berths	8
Engine(s)	1 x Perkins 4-108 diesel	Hp/Kw	50.00 (hp), 36.75 (kw)
Asking price	sold (VAT)	Lying	contact sales office

CONTACT

Sales office	De Valk Costa Blanca	Telephone	+34 96 50 21 569
Address	Costa Blanca Region 03730 Javea Alicante ES	E-mail	costablanca@devalk.nl

DISCLAIMER

These particulars are given in good faith as supplied but cannot be guaranteed.



GENERAL

Model	HUISMAN 41
Type	sailing yacht
LOA (m)	12,53
LWL (m)	9,64
Beam (m)	3,83
Draft (m)	2,13
Air draft (m)	18,59
Year built	1979
Builder	Huisman Vollenhove
Country	The Netherlands
Designer	Sparkman & Stephens
Displacement (t)	10,1
Ballast (tonnes)	5,3
CE norm	A
Hull material	aluminium
Hull colour	green
Hull thickness (mm)	AlMg45Mn seawater resistant Original 6 mm
Hull shape	S-bilged
Keel type	fin keel
Superstructure material	aluminium
Superstructure (mm)	AlMg45Mn seawater resistant 4,5
Deck material	aluminium
Deck finish	Treadmaster On teak partly in need of cosmetic attention
Cockpit deck finish	teak Needs attention
Antifouling (year)	2019
Dorades	yes
Window material	polycarbonate
Deckhatch	yes
Portholes	aluminium
Insulation	foam plates 20 mm



Fuel tank (litre)	aluminium 230
Level indicator (fuel tank)	yes
Freshwater tank (litre)	380 in two tanks
Greywater tank (litre)	polyethylene
Wheel steering	cable steering
Emergency tiller	yes
More info on hull	Paint is good, needs some light polish to make her new
More info on paintwork	Superstructure needs repaint

ACCOMMODATION

Cabins	2
Berths	8
Interior	teak
Layout	Aftcabin
Floor	teak and holly
Open cockpit	yes
Saloon	With U shape settee
Headroom saloon (m)	1.90-2.20
Navigation center	yes
Chart table	yes
Aft Cabin	yes
Dinette	yes
Opening door to cockpit	yes
Galley	yes
Countertop	stainless steel
Sink	stainless steel
Cooker	yes
Oven	yes
Fridge	yes
Hot water system	yes
Water pressure system	electrical



Manual and/or foot pump	yes
Owners cabin	double bed Aft cabin light and airy
Bed length (m)	2
Wardrobe	hanging/drawers/shelves
Bathroom	en suite
Toilet	en suite
Toilet system	manual Baby Blake
Wash basin	in the bathroom
Shower	en suite
Guest cabin 1	twin single Double (now storage room)
Bed length (m)	2
Wardrobe	hanging and shelves
Bathroom	shared

MACHINERY

No of engines	1
Make	Perkins
Type	4-108
HP	50
kW	36,75
Fuel	diesel
Maximum speed (kn)	9
Cruising speed (kn)	7
Engine cooling system	freshwater heat exchanger
Engine controls	bowden cable
Exhaust	watercooled
Propeller type	folding Max prop
Propeller blades	3
Propeller shaft material	stainless steel
Manual bilge pump	2x
Electric bilge pump	yes



Electrical installation	12 volt
Batteries	yes
Start battery	1
Service battery	2
Battery charger	Mastervolt Chargemaster 12/50-3
Inverter	Heart Freedom 10 Volt
Wind generator	yes
Shorepower	with cable

NAVIGATION

Compass	yes
VHF	Matrira GX 2150 + AIS
AIS receiver	Via VHF

EQUIPMENT

Cockpit table	yes
Anchor	Bruce 60 lb
Anchor chain	Lead chain + robe
Life raft	container Needs service
Life raft (pers)	6
Radar reflector	yes
Fenders	yes
Radio-cd player	Jensen
Speakers in salon	yes
Extinguisher in engine room	yes

RIGGING

Rigging	cutter
Standing rigging	wire
Material mast	aluminium



Spreaders	1
Keel stepped mast	yes
Mainsail	Quantum 2013
Fully battened mainsail	yes
Jib	Stormjib (never used)
Genoa	Quantum 2013
Genoa furler	yes
Spinnaker	Like new, hardly used
Primary sheet winch	yes
Secondary sheet winch	yes
Genoa sheetwinches	yes
Spi-pole	aluminium



HUISMAN 41



HUISMAN 41



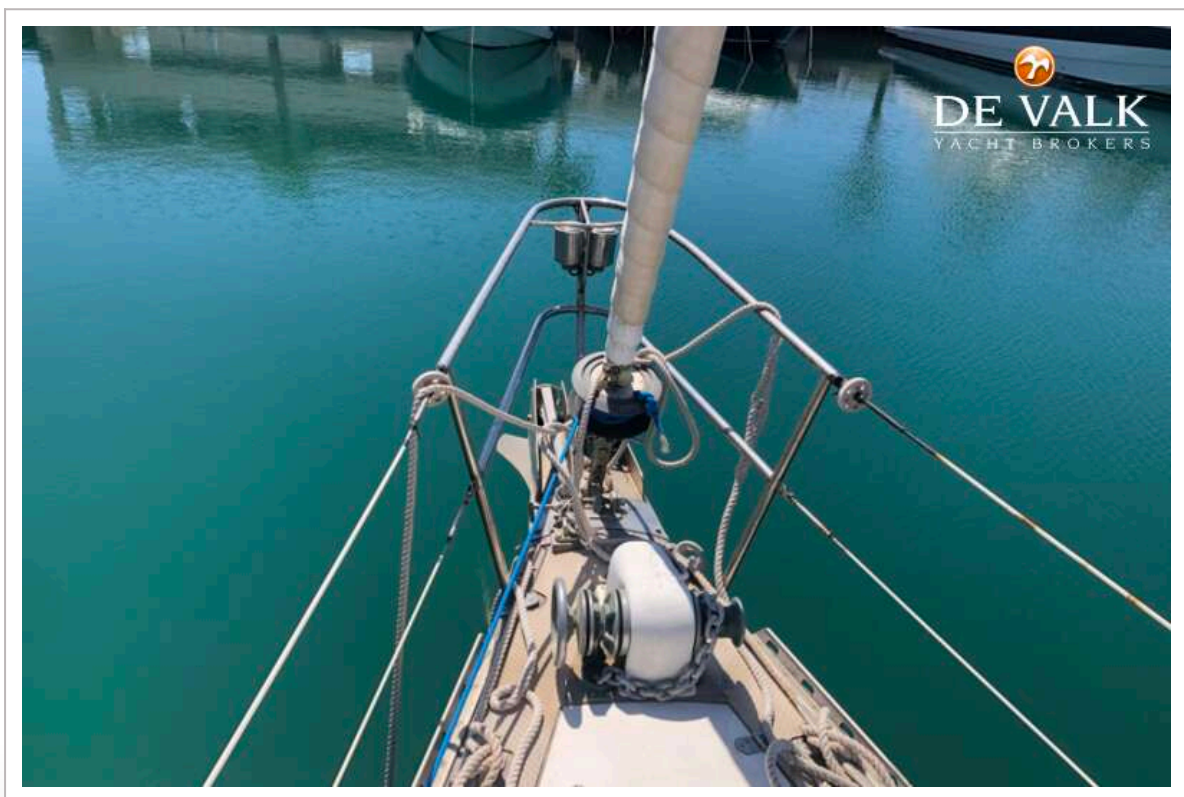
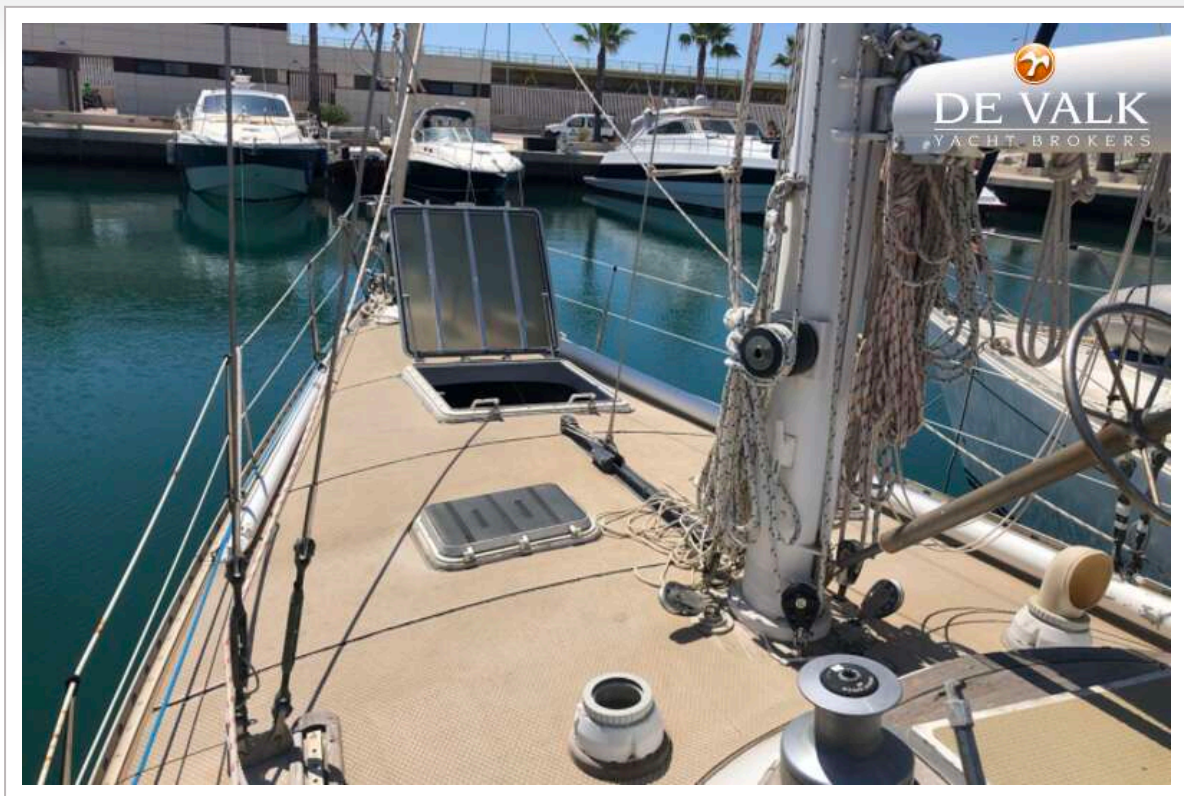
HUISMAN 41



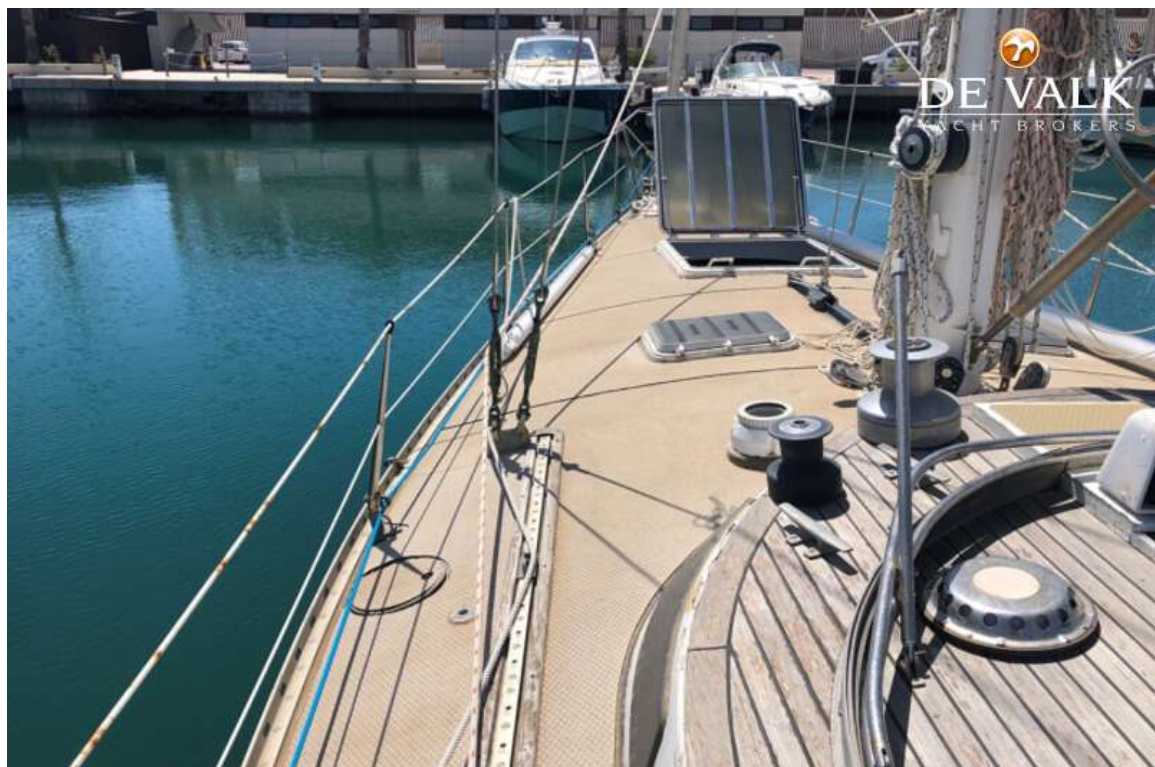
HUISMAN 41



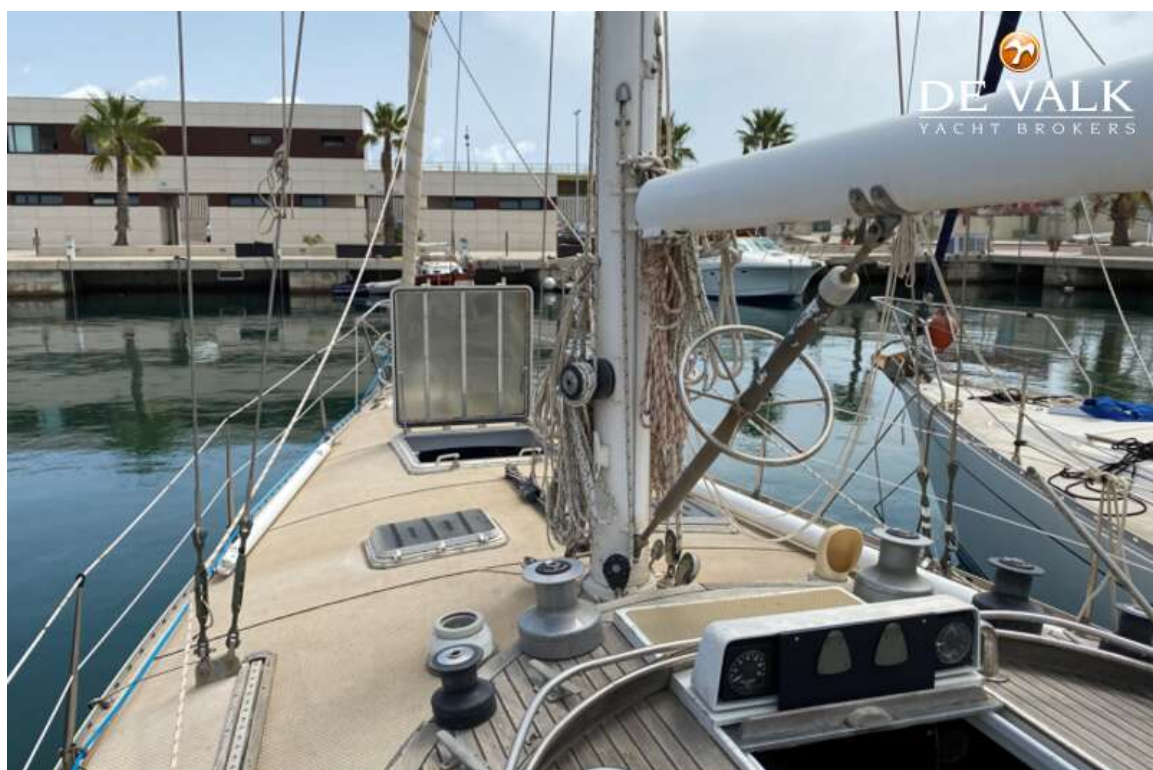
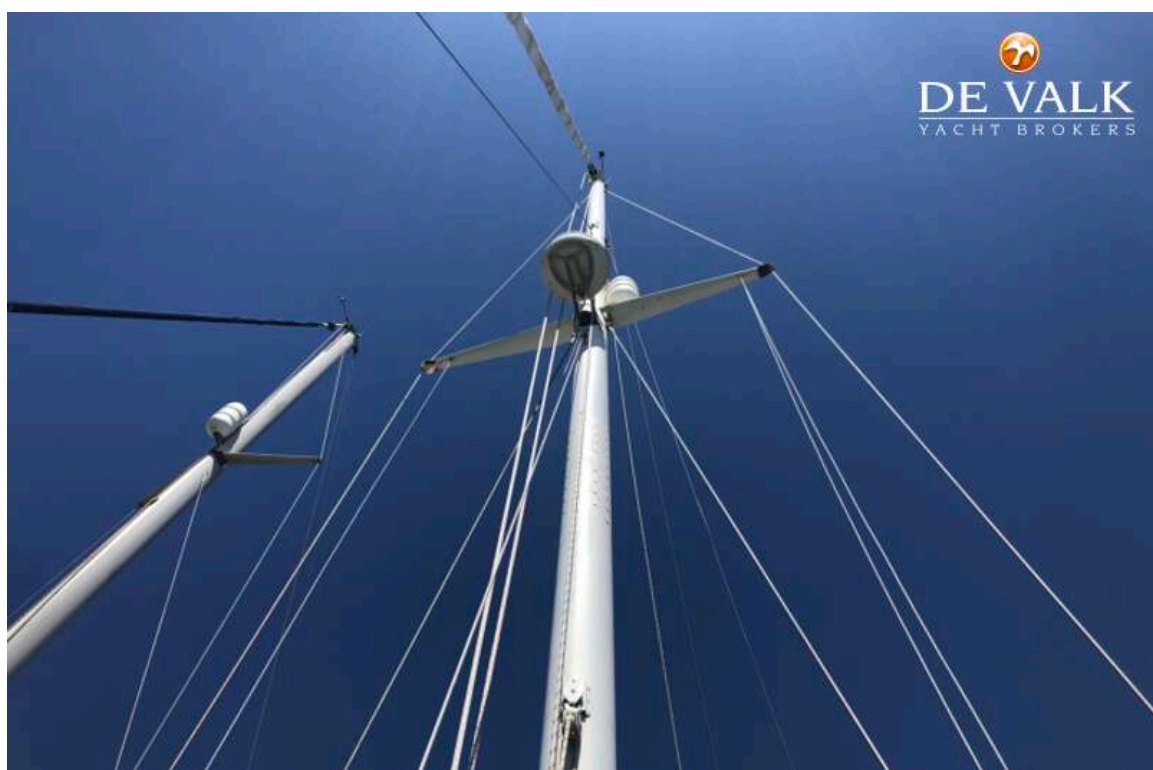
HUISMAN 41



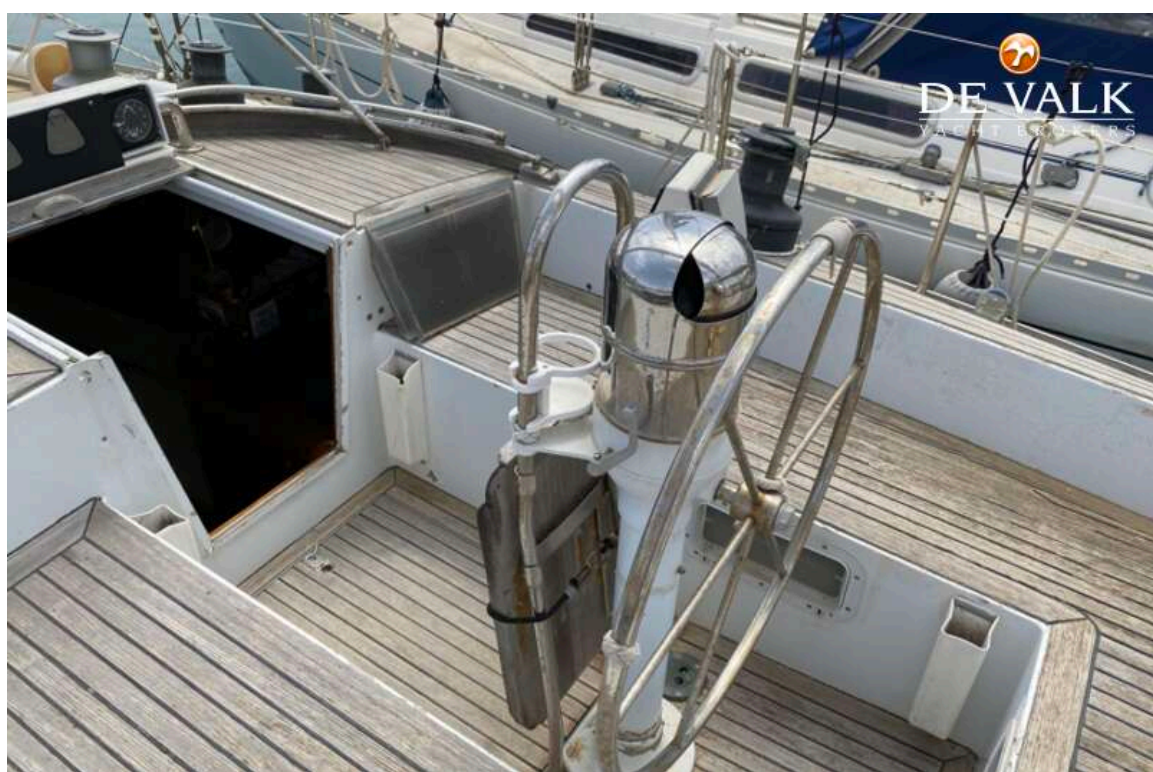
HUISMAN 41



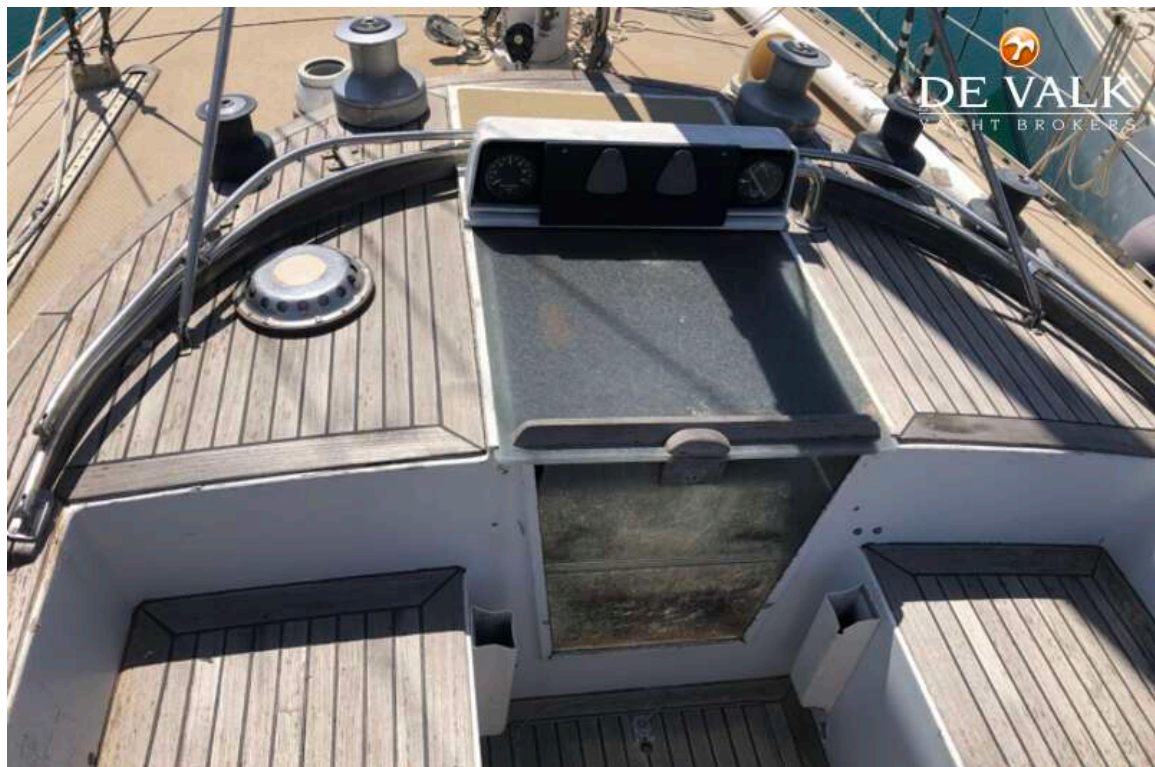
HUISMAN 41



HUISMAN 41



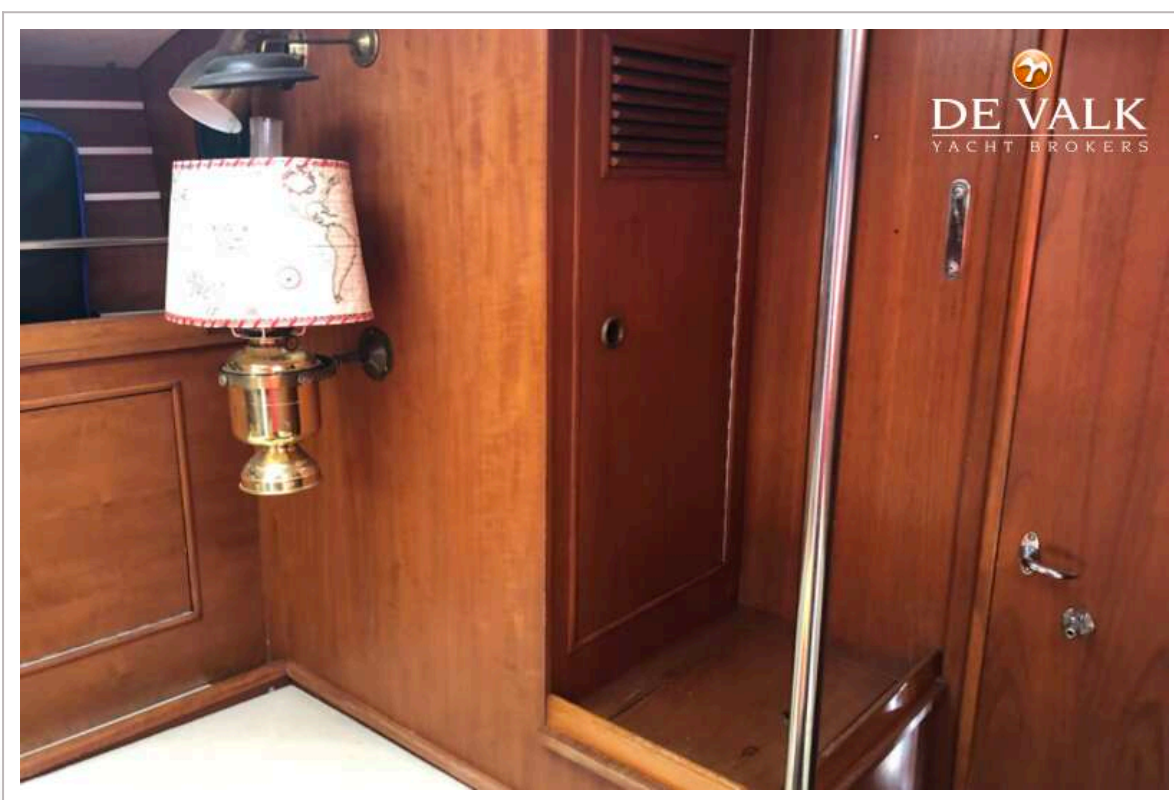
HUISMAN 41



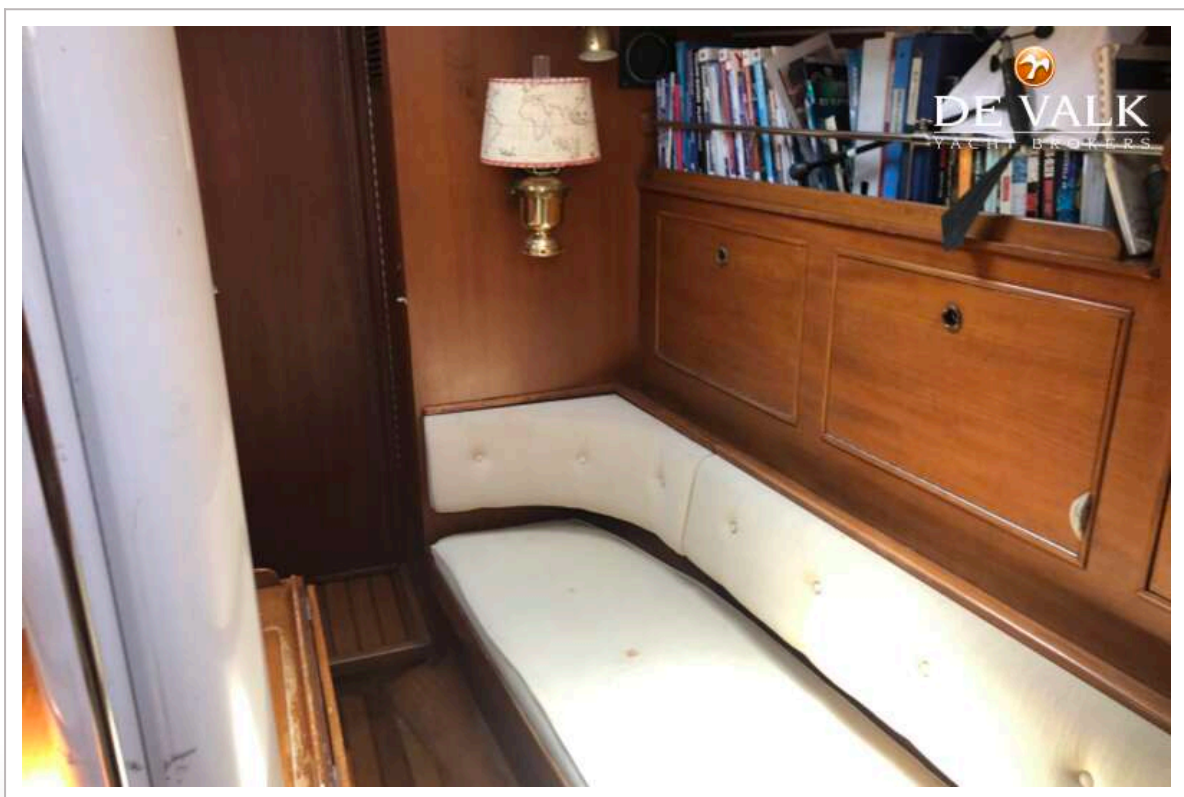
HUISMAN 41



HUISMAN 41



HUISMAN 41

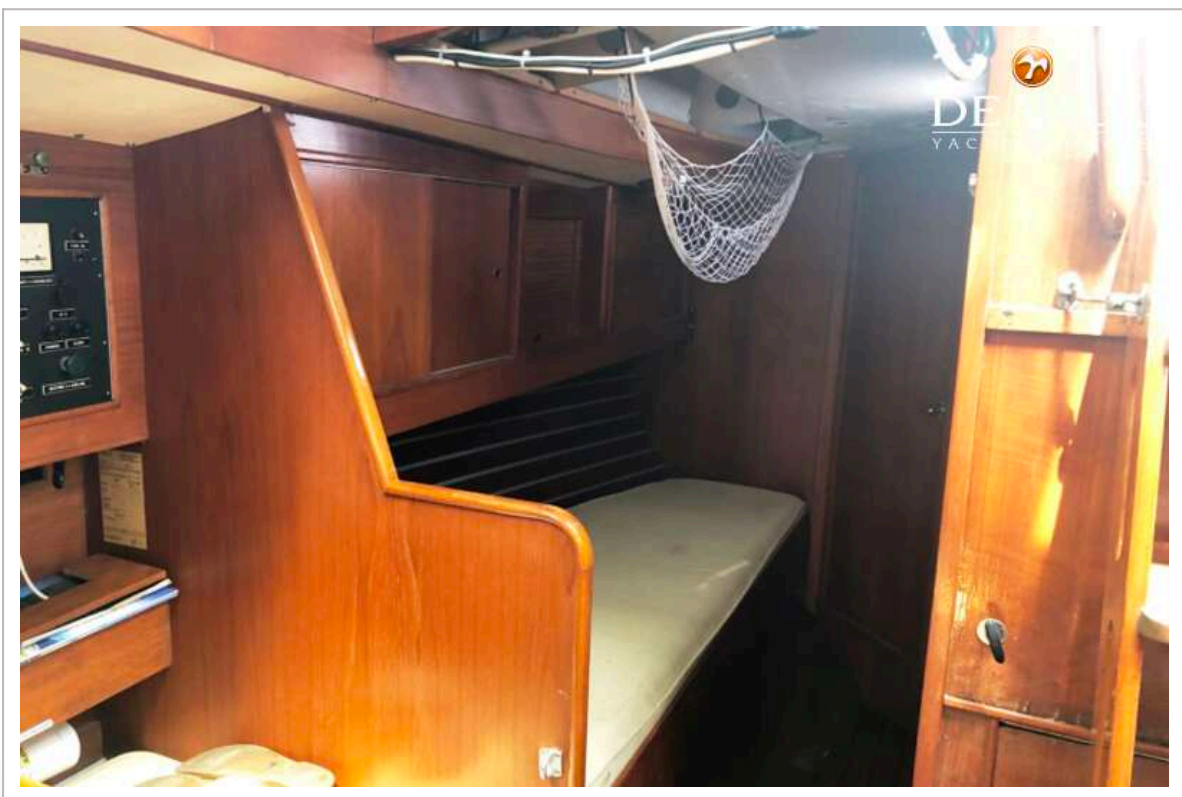
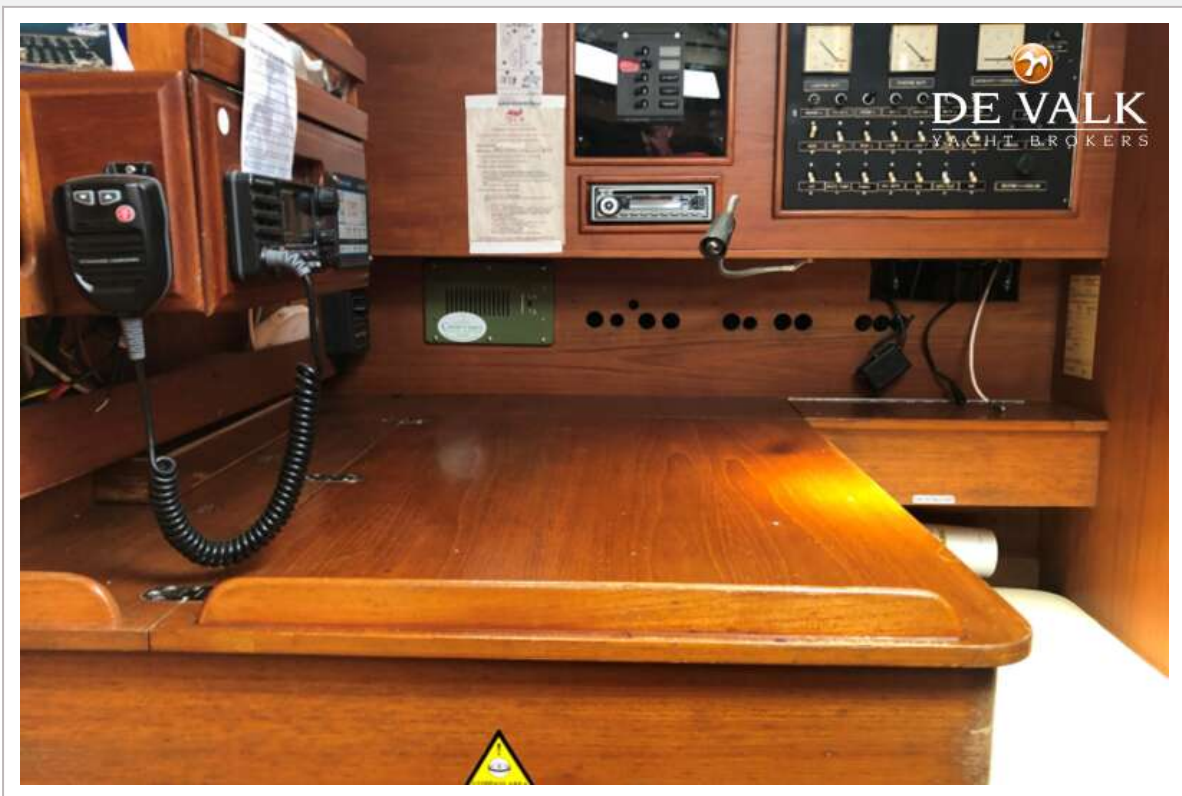


HUISMAN 41



HUISMAN 41





HUISMAN 41



HUISMAN 41



HUISMAN 41

