



TRINTELLA 82AD HULL



DE VALK
YACHT BROKERS

TRINTELLA 82AD HULL

BROKER'S COMMENTS

High-quality aluminium hull of the Trintella 82 AD, a yacht that offers the perfect combination of elegance and performance. An impressive feat of craftsmanship. The construction has been carried out with extreme precision. This Trintella 82 AD hull provides an excellent basis for personalized finishing and interior design, giving future owners the opportunity to make their mark on this beautiful yacht.

Stein Dubbeldam

SPECIFICATIONS

| | | | |
|---------------------|-------------------------|----------------|---------------------------------|
| Dimensions | 25.00 x 6.20 x 2.70 (m) | Builder | Bloemsma |
| Built | 1992 | Cabins | |
| Material | Aluminium | Berths | |
| Engine(s) | 1 x MTU 10 V 183 diesel | Hp/Kw | 291.00 (hp), 214.18 (kw) |
| Asking price | € 199.000 (VAT Paid) | Lying | elsewhere / Not at sales office |

CONTACT

| | | | |
|---------------------|---|------------------|-----------------------|
| Sales office | De Valk Hindeloopen B.V. | Telephone | +31 514 52 40 00 |
| Address | Oosterstrand 1 8713 JS Hindeloopen NL | E-mail | hindeloopen@devalk.nl |

DISCLAIMER

These particulars are given in good faith as supplied but cannot be guaranteed.



TRINTELLA 82AD HULL

GENERAL

| | |
|-------------------------|--|
| Model | TRINTELLA 82AD HULL |
| Type | sailing yacht |
| LOA (m) | 25,00 |
| LWL (m) | 21,20 |
| Beam (m) | 6,20 |
| Draft (m) | 2,70 |
| Year built | 1992 |
| Builder | Bloemsma |
| Country | The Netherlands |
| Designer | E.G. van de Stadt |
| Displacement (t) | 63,3 |
| Ballast (tonnes) | Keelballast 25.000 kg |
| CE norm | NA |
| Hull material | aluminium |
| Hull colour | Primer |
| Hull thickness (mm) | Weight hull 9000 kg |
| Hull shape | round-bilged |
| Keel type | wing keel |
| Superstructure material | aluminium |
| Deck material | aluminium superstructure and deck - weight 3400 kg |
| Deck finish | teak |
| Cockpit deck finish | paint |
| Deckhatch | Custom made Flush |

ACCOMMODATION

| | |
|------------|--|
| Extra info | Hull was stored inside a shed for most of the time |
|------------|--|

MACHINERY

| | |
|---------------|---|
| No of engines | 1 |
|---------------|---|

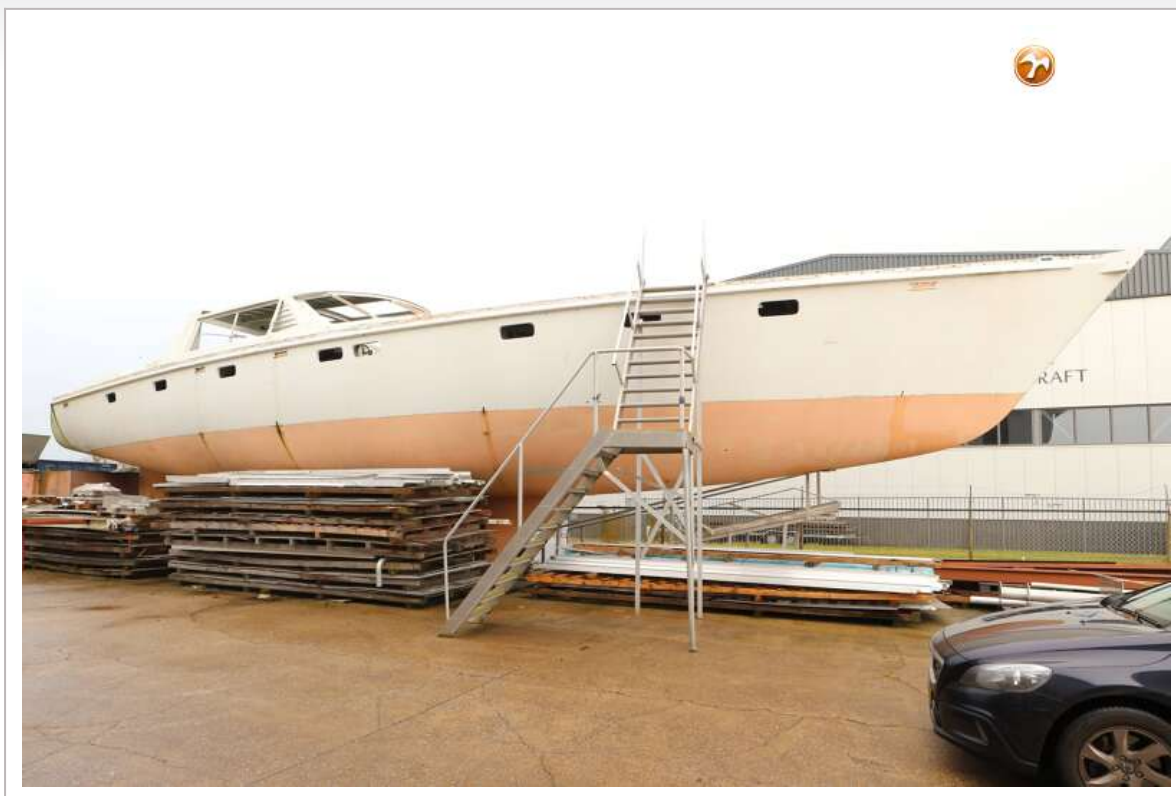


TRINTELLA 82AD HULL

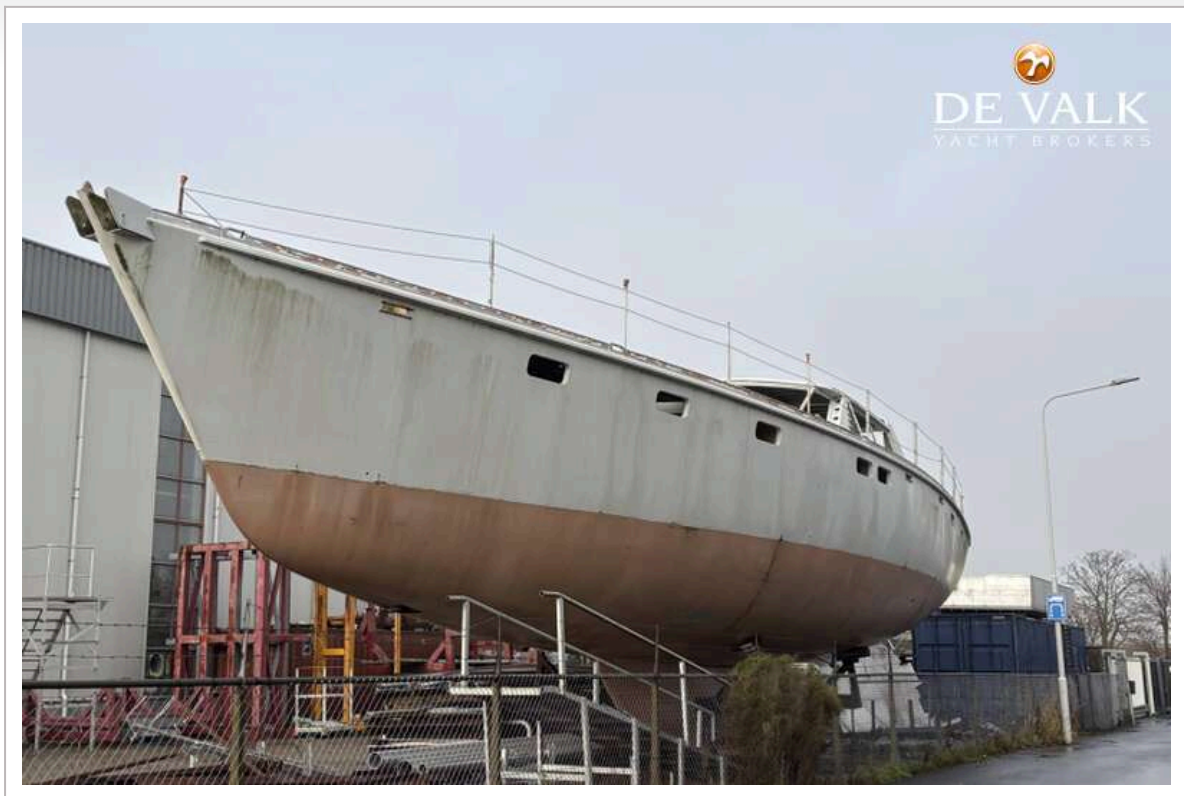
| | |
|---------------------|----------|
| Make | MTU |
| Type | 10 V 183 |
| HP | 291 |
| kW | 214.18 |
| Fuel | diesel |
| Maximum speed (kn) | 12 |
| Cruising speed (kn) | 9 |
| Drive | shaft |



TRINTELLA 82AD HULL



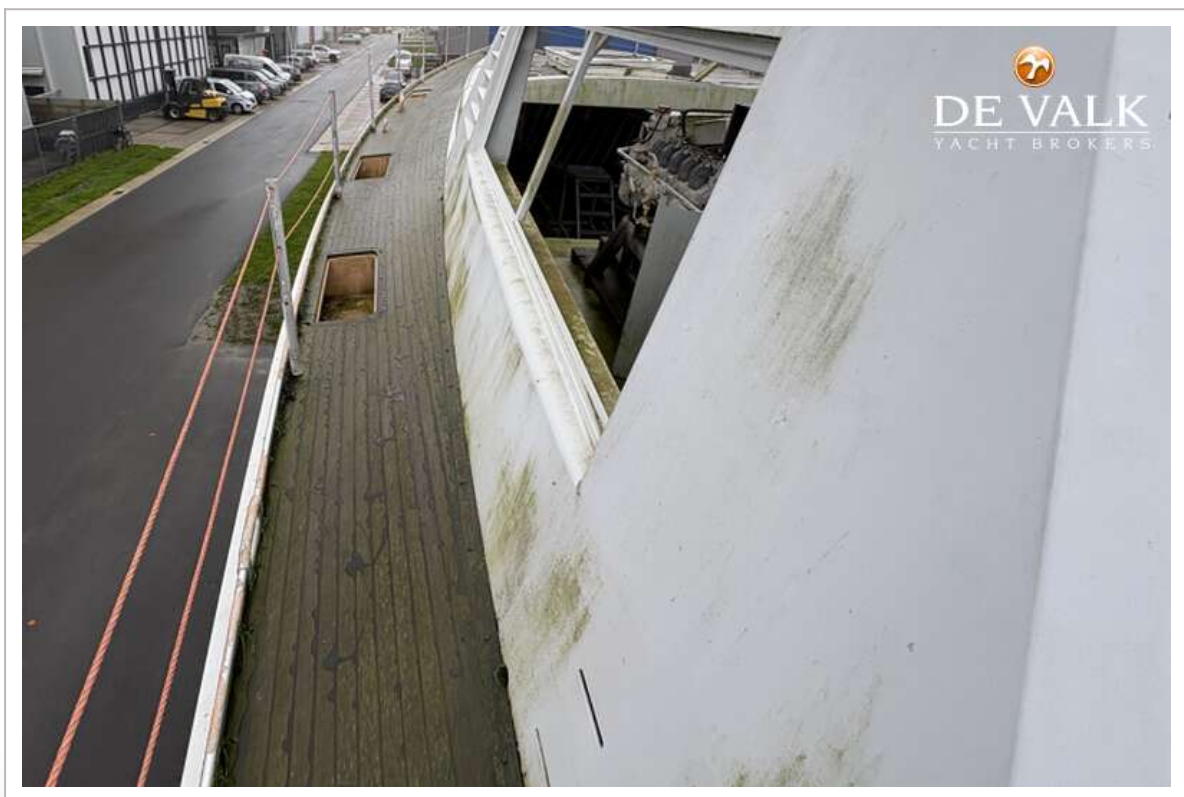
TRINTELLA 82AD HULL



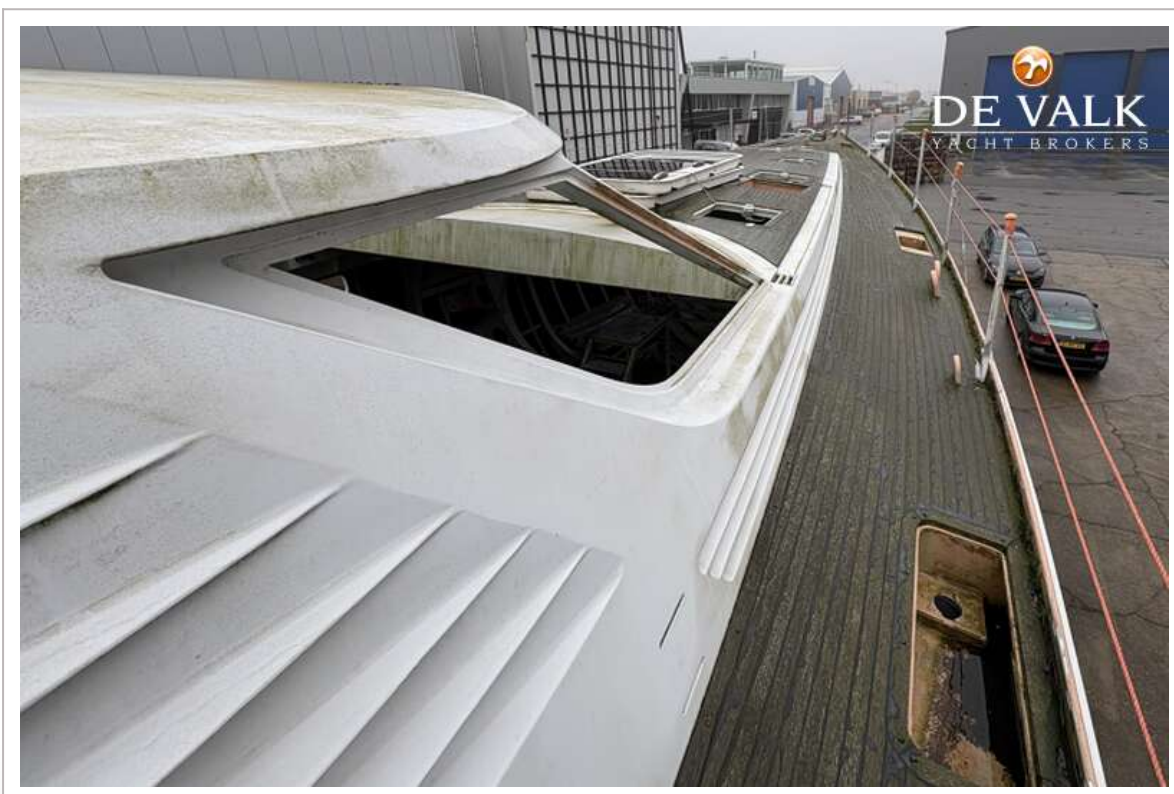
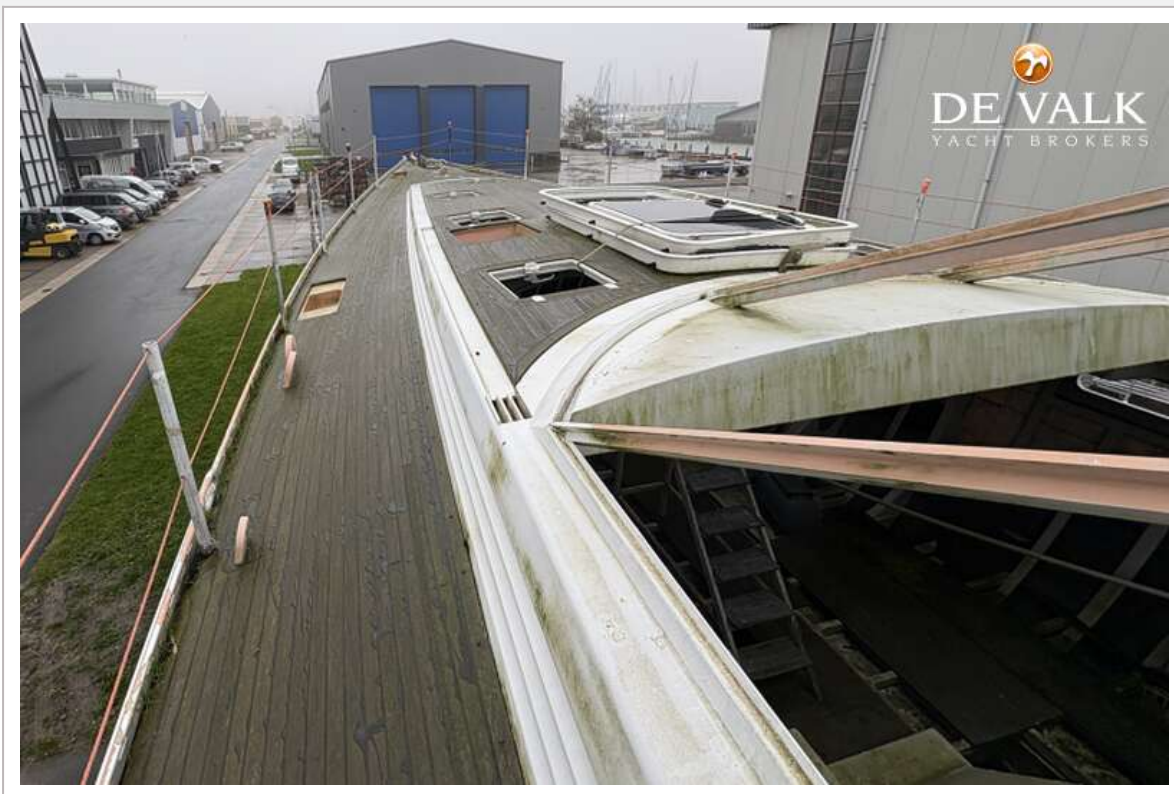
TRINTELLA 82AD HULL



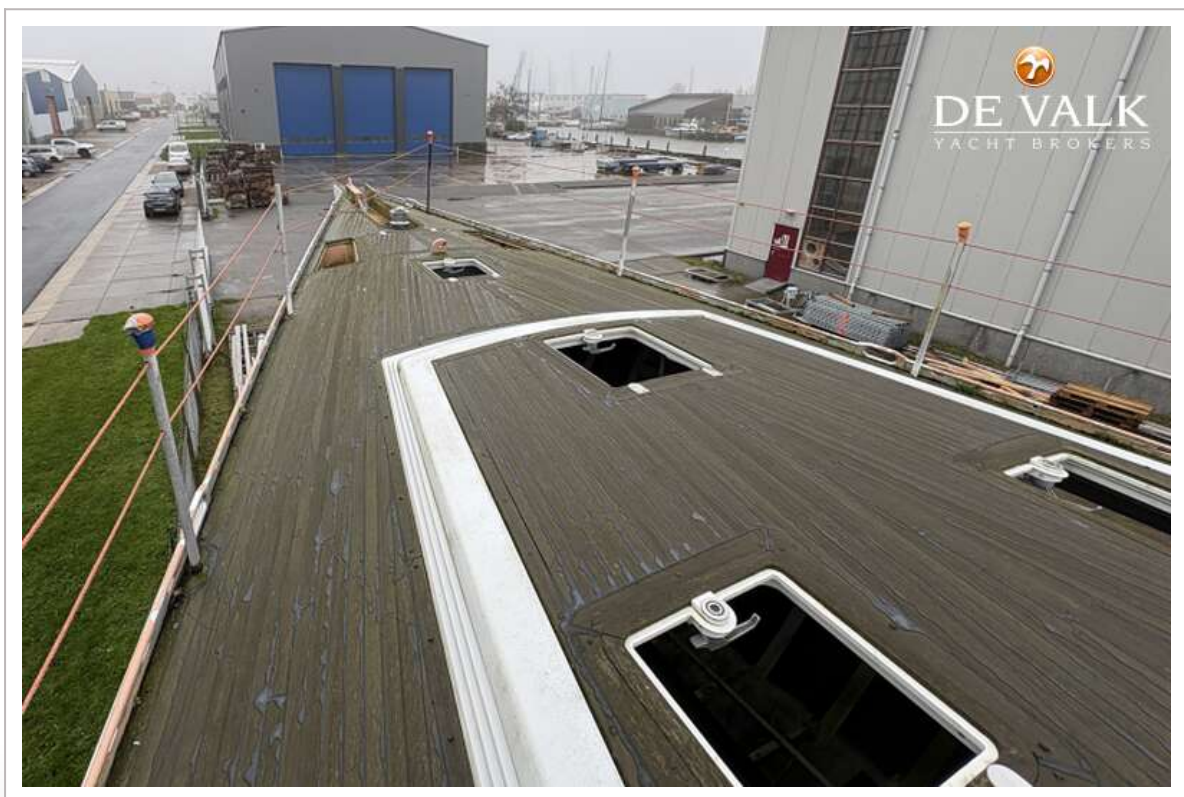
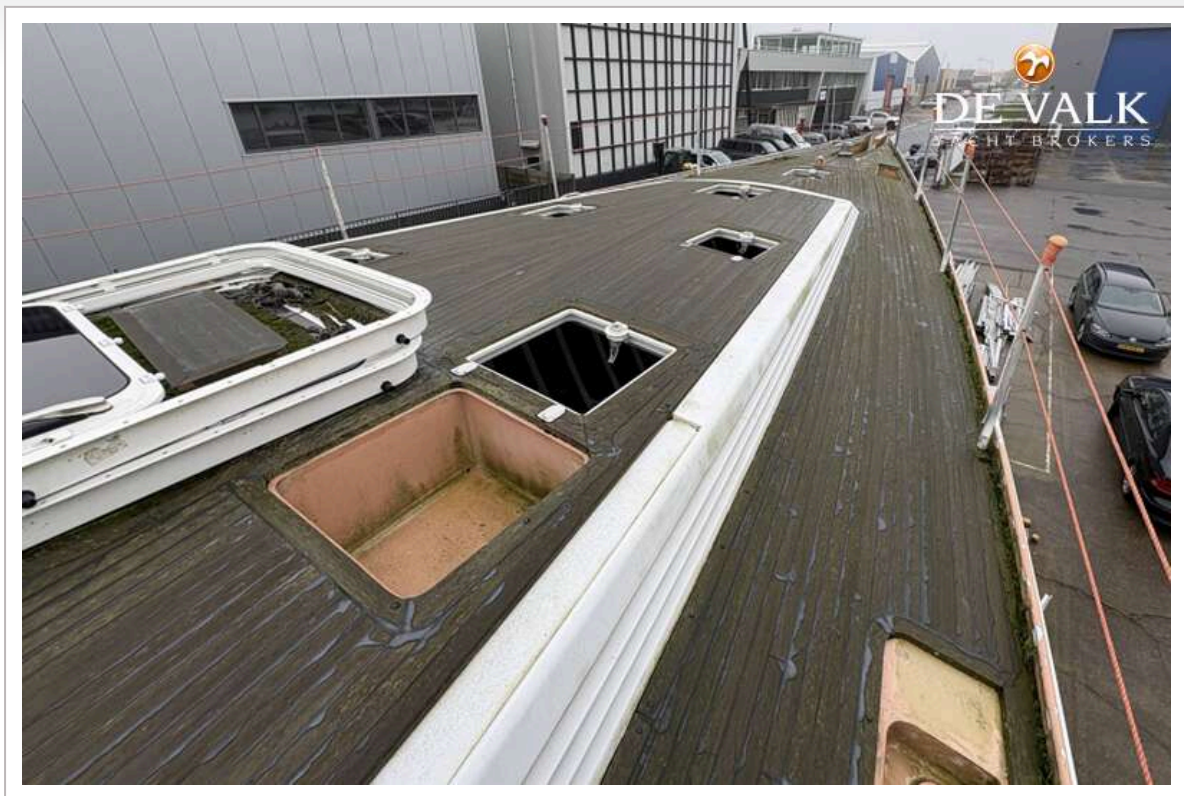
TRINTELLA 82AD HULL



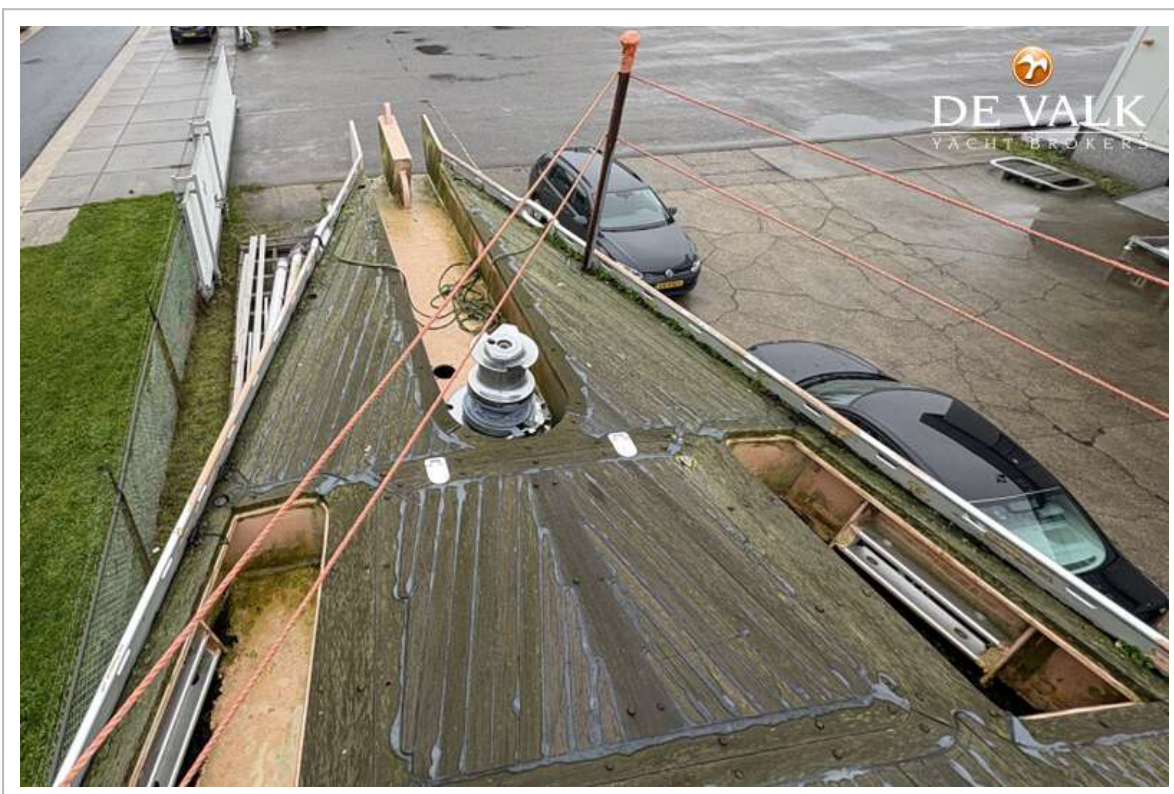
TRINTELLA 82AD HULL



TRINTELLA 82AD HULL



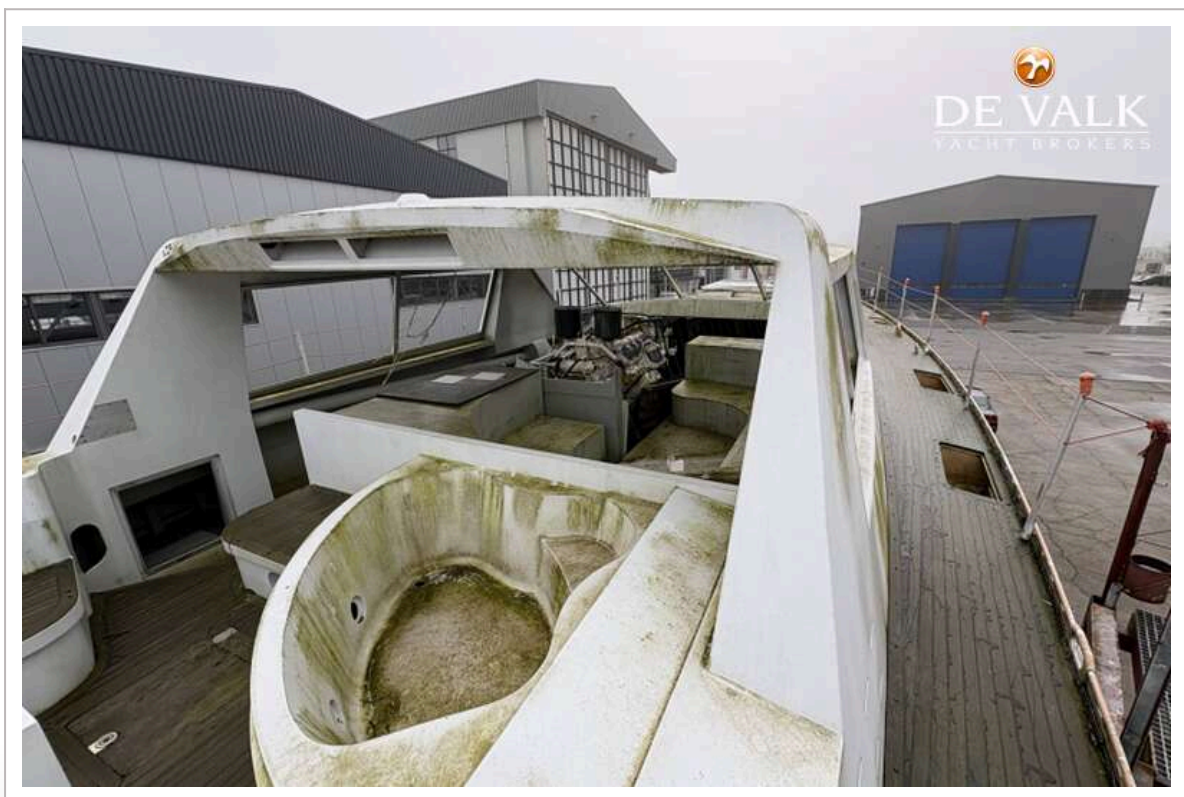
TRINTELLA 82AD HULL



TRINTELLA 82AD HULL



TRINTELLA 82AD HULL



TRINTELLA 82AD HULL



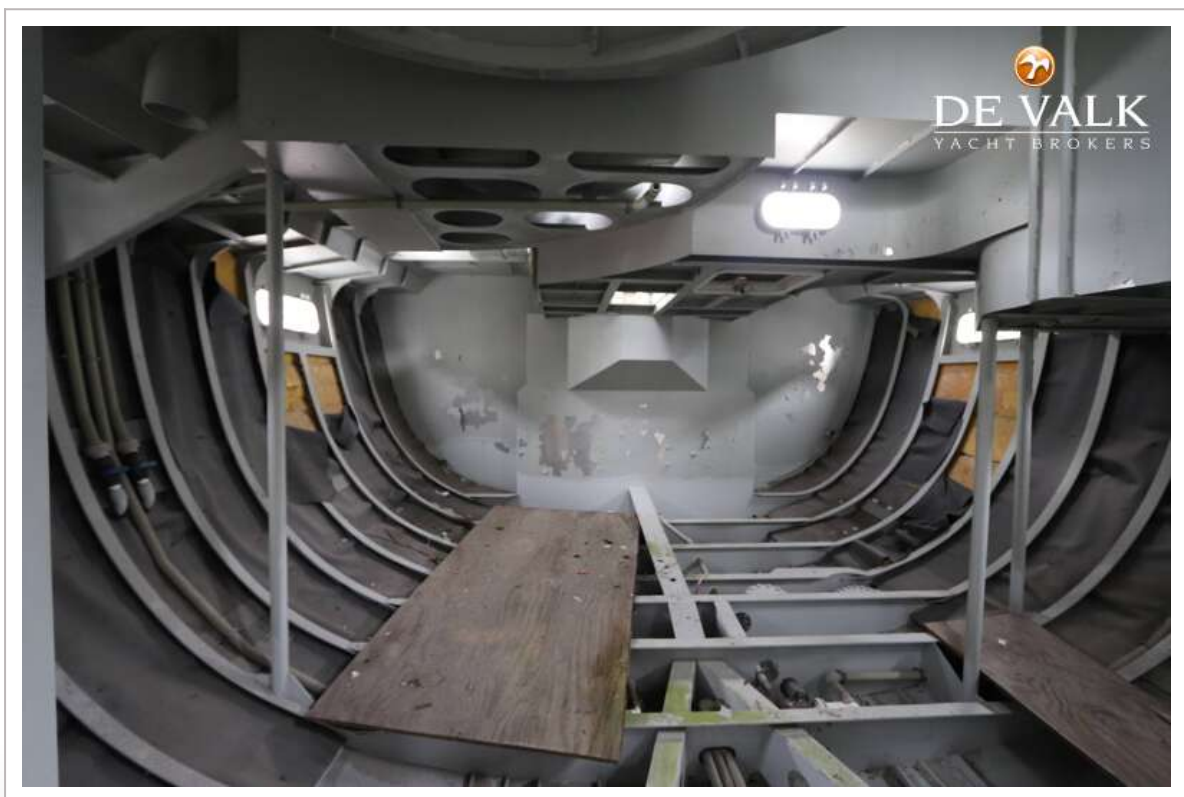
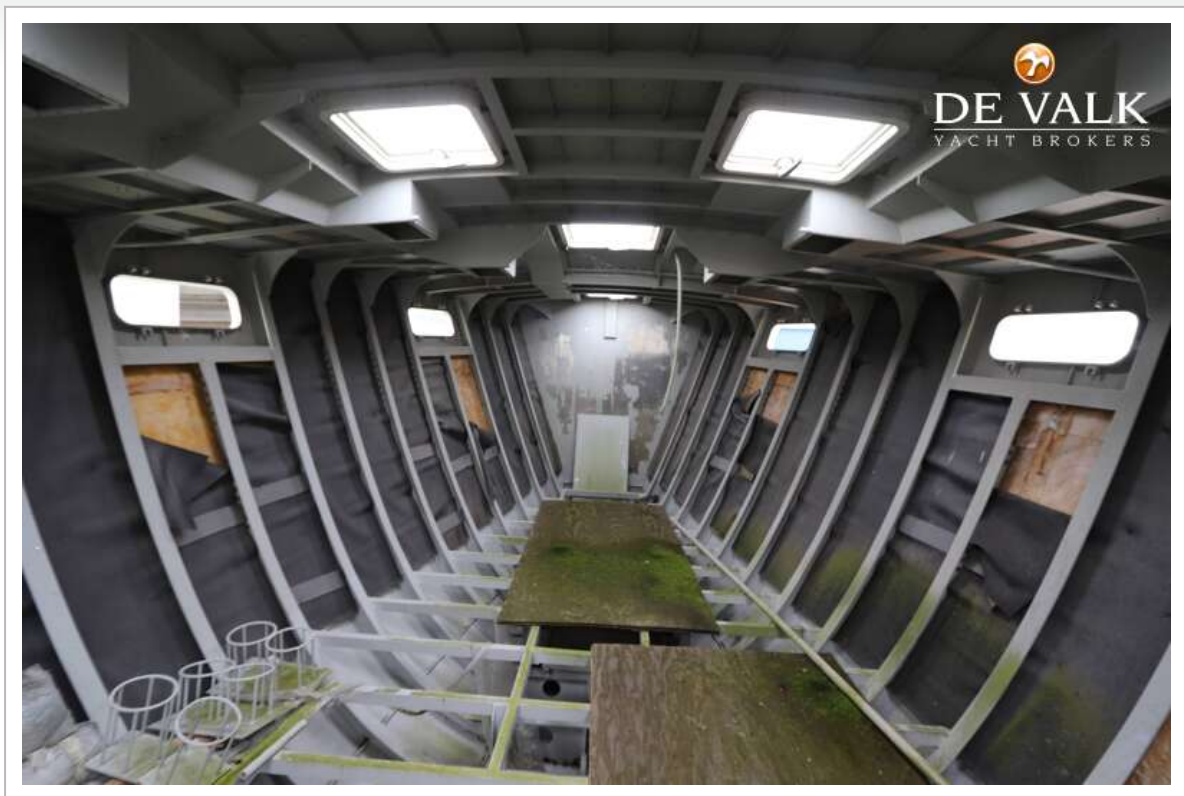
TRINTELLA 82AD HULL



TRINTELLA 82AD HULL



TRINTELLA 82AD HULL



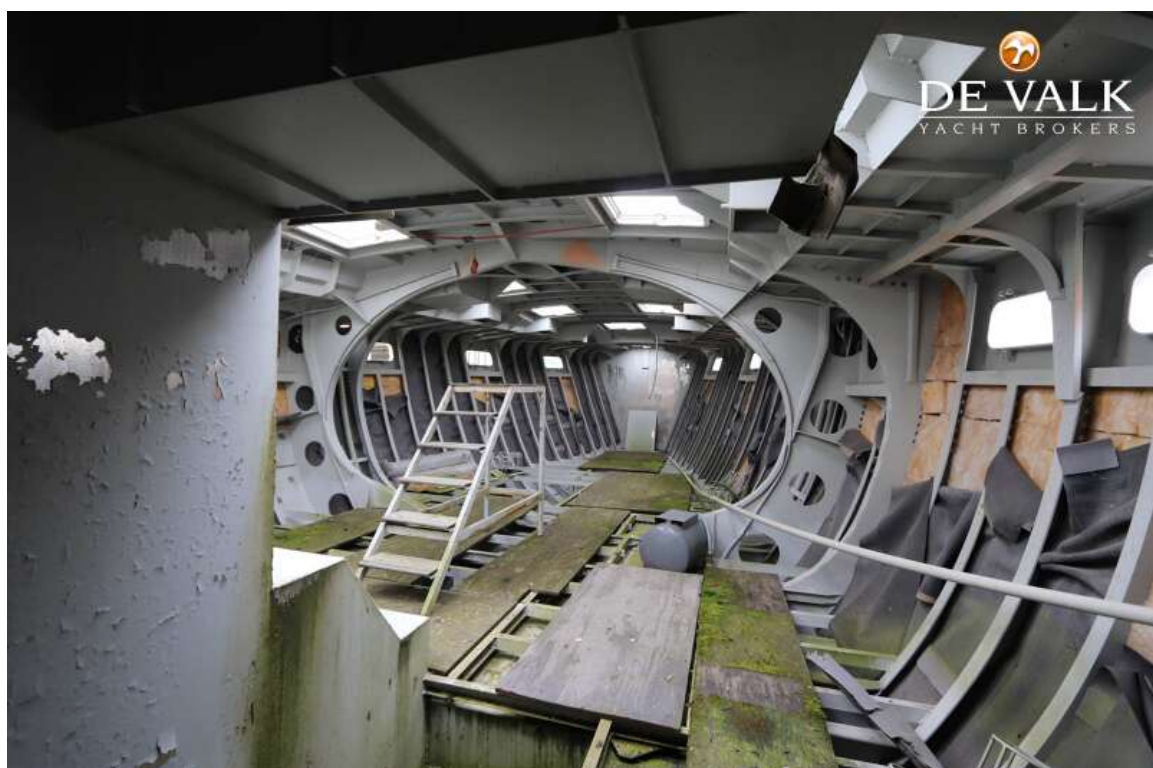
TRINTELLA 82AD HULL



TRINTELLA 82AD HULL



TRINTELLA 82AD HULL



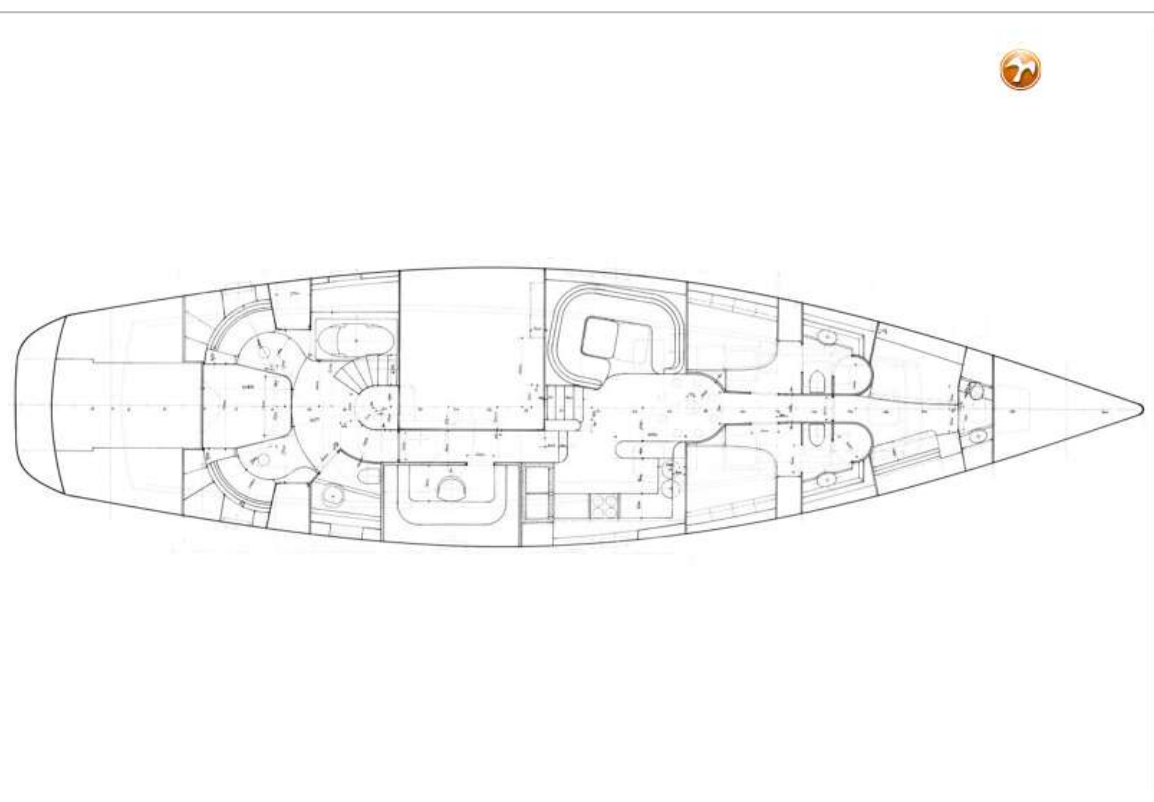
TRINTELLA 82AD HULL



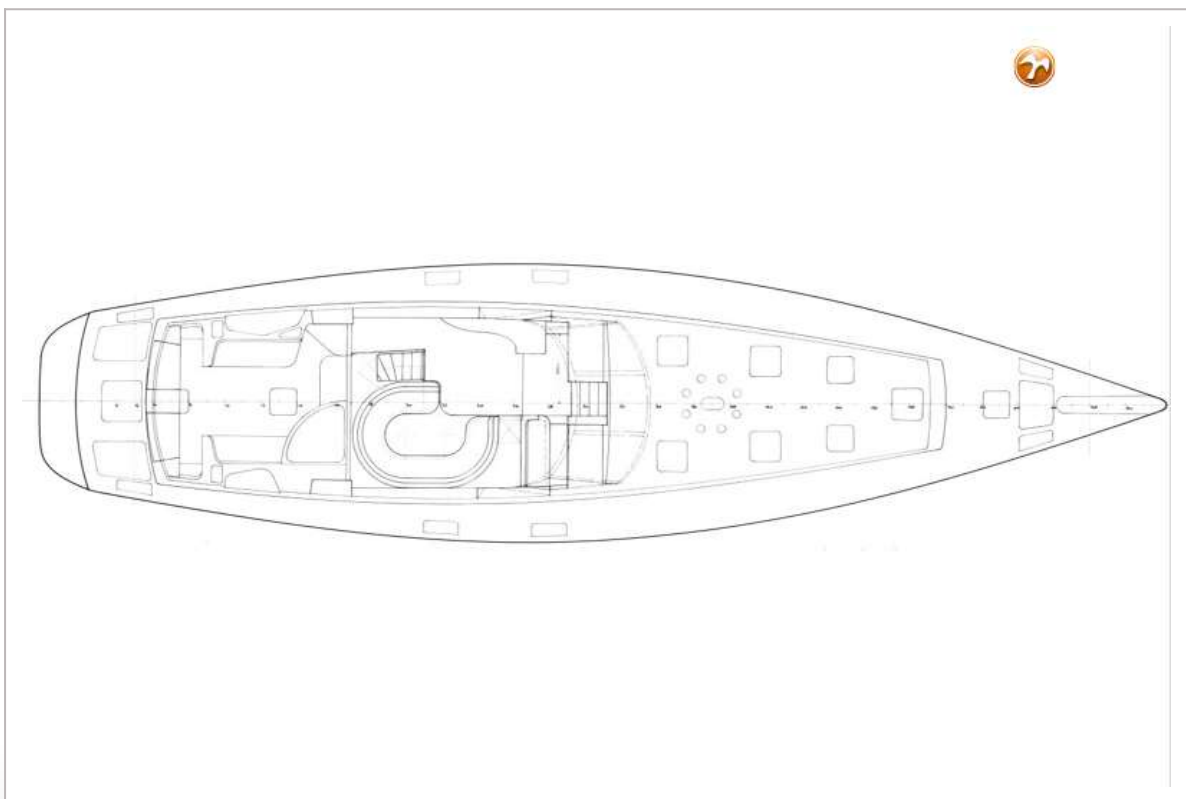
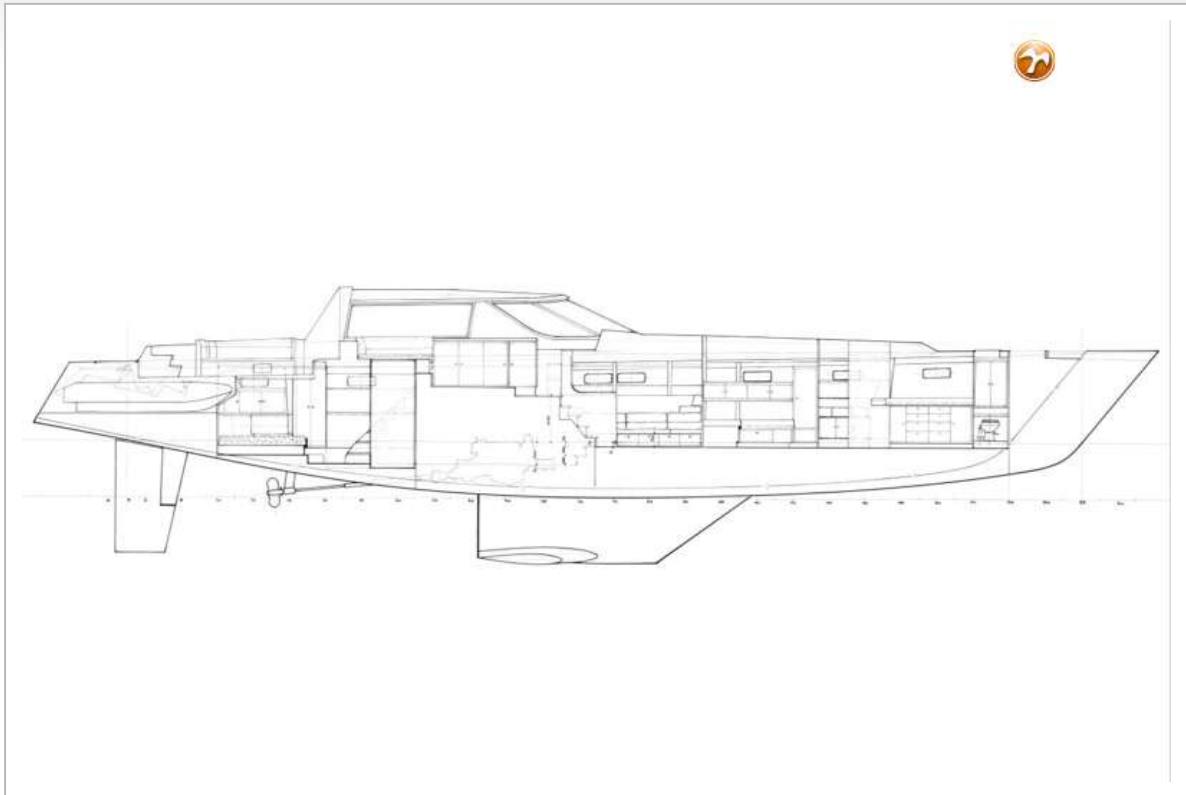
TRINTELLA 82AD HULL



TRINTELLA 82AD HULL



TRINTELLA 82AD HULL



TRINTELLA 82AD HULL

