



DE VALK  
YACHT BROKERS



## HALLBERG RASSY 42 KETCH



DE VALK  
YACHT BROKERS

# HALLBERG RASSY 42 KETCH

## BROKER'S COMMENTS

Hallberg Rassy has a phenomenal reputation for building safe, seaworthy and comfortable boats, and this 42-ft Icon "Lady of Avalon" is no exception. Everything on this yacht is like that for a reason – nothing is left to chance. Her wide, uncluttered flushdeck, no-thrills ketch rigged and deep, comfortable cockpit all combine to make her feel very stately. Her current and second owner took very good care for her and placed a complete new teakdeck in 2019 and this year a new engine was installed. This is a yacht for bluewater cruising par excellence – she'd take you anywhere you want....

*Henk Sijbranda*

## SPECIFICATIONS

<b>Dimensions</b>	12.93 x 3.78 x 1.85 (m)	<b>Builder</b>	Hallberg Rassy Varv
<b>Built</b>	1985	<b>Cabins</b>	2
<b>Material</b>	GRP	<b>Berths</b>	10
<b>Engine(s)</b>	1 x Beta Marine Beta 75 diesel	<b>Hp/Kw</b>	75.00 (hp), 55.20 (kw)
<b>Asking price</b>	sold (VAT )	<b>Lying</b>	at sales office

## CONTACT

<b>Sales office</b>	De Valk Hindeloopen B.V.	<b>Telephone</b>	+31 514 52 40 00
<b>Address</b>	Oosterstrand 1 8713 JS Hindeloopen NL	<b>E-mail</b>	hindeloopen@devalk.nl

## DISCLAIMER

These particulars are given in good faith as supplied but cannot be guaranteed.



# HALLBERG RASSY 42 KETCH

## GENERAL

Model	HALLBERG RASSY 42 KETCH
Type	sailing yacht
LOA (m)	12,93
LWL (m)	10,50
Beam (m)	3,78
Draft (m)	1,85
Air draft min (m)	17,50
Headroom (m)	1,95
Year built	1985
Builder	Hallberg Rassy Varv
Country	Sweden
Designer	Christoph Rassy / Olle Enderlein
Displacement (t)	11,5
Ballast (tonnes)	lead in GRP 4,7
CE norm	NA
Hull material	GRP
Hull colour	white
Hull shape	round-bilged
Keel type	long keel With rudder on skeg
Superstructure material	GRP
Rubbing strake	stainless steel
Deck material	GRP
Deck finish	teak New 2017
Superstructure deck finish	teak New 2017
Cockpit deck finish	teak New 2017
Antifouling (year)	2020
Dorades	3x
Window frame	stainless steel
Window material	tempered glass
Deckhatch	5x



# HALLBERG RASSY 42 KETCH

<b>Portholes</b>	aluminium 10x
<b>Fuel tank (litre)</b>	stainless steel 250 ltr. new tank 2020
<b>Fuel tank 2 (litre)</b>	stainless steel 145 ltr. new tank 2020
<b>Level indicator (fuel tank)</b>	yes
<b>Freshwater tank (litre)</b>	GRP 725 ltr.
<b>Level indicator (freshwater)</b>	yes
<b>Blackwater tank (litre)</b>	stainless steel Approx 50 ltr.
<b>Blackwater tank extraction</b>	
<b>Wheel steering</b>	cable steering
<b>Emergency tiller</b>	yes
<b>More info on hull</b>	Original gelcoat, excellent condition
<b>Extra info</b>	New rudder + rudder suspension
<b>Extra info</b>	new upholstery + mattresses - 2018

## ACCOMMODATION

<b>Cabins</b>	2
<b>Berths</b>	10
<b>Interior</b>	mahogany
<b>Layout</b>	Centre cockpit, large saloon with in the back the owner's cabin and in front of the guest cabin
<b>Floor</b>	teak and holly
<b>Saloon</b>	yes
<b>Headroom saloon (m)</b>	2.10
<b>Heating</b>	diesel ducted hot air
<b>Navigation center</b>	yes
<b>Chart table</b>	yes
<b>Aft Cabin</b>	Owners cabin
<b>Galley</b>	yes
<b>Countertop</b>	wood
<b>Sink</b>	stainless steel Double
<b>Cooker</b>	calor gas



# HALLBERG RASSY 42 KETCH

Oven	In cooker
Fridge	yes
Hot water system	220V + engine
Water pressure system	electrical
Manual and/or foot pump	yes
Owners cabin	double bed + single bed
Bed length (m)	2
Wardrobe	hanging/drawers/shelves
Bathroom	en suite
Toilet	Jabsco
Toilet system	manual
Wash basin	
Shower	
Guest cabin 1	v-bed
Bed length (m)	2
Wardrobe	hanging and shelves
Bathroom	
Toilet	Jabsco
Toilet system	manual
Wash basin	

## MACHINERY

No of engines	1
Make	Beta Marine
Type	Beta 75
HP	75
kW	55,20
Fuel	diesel
Year installed	2020
Maximum speed (kn)	8
Cruising speed (kn)	7



# HALLBERG RASSY 42 KETCH

Consumption (l/hr)	6
Range (nm)	460
Engine hours	25
Engine cooling system	freshwater heat exchanger
Drive	shaft
Engine controls	bowden cable
Gearbox	mechanical 2020 - ZF45A
Exhaust	watercooled
Propeller type	folding Gori with overdrive
Propeller blades	3
Propeller shaft material	stainless steel
Shaft lubrication	water
Manual bilge pump	yes
Electric bilge pump	3x
Bilge alarm	yes
Start battery	2x - 2019
Service battery	4x whisperPower 640Ah - 2018
Battery charger/inverter	Victron Multiplus 12V/3000W with BM702 control unit.
Shorepower	with cable

## NAVIGATION

Compass	Plastimo Olympic 135
Depth sounder	On Simrad fishfinder
Log	Raymarine ST60+ SPEED
Windset	Raymarine ST60+ WIND and CH WIND
VHF	Simrad RS35 with HS35 remote set. (VHF is linked to Nais-500)
VHF handheld	Standard Horizon HX851
Autopilot	Simrad AP28 with WR20 remote control
Rudder angle indicator	Simrad IS20
Radar	Simrad 4G
Radar/GPS/plotter	Simrad nss9 evo2



# HALLBERG RASSY 42 KETCH

AIS transponder	Simrad Nais-500 Class-B
Navigation lights	yes
Extra info	Hydraulic autopilot with electric giro and self-learning computer, light generator Whisper power 4 phase 130amp. separate starting generator

## EQUIPMENT

Fixed hardtop	Stainless steel fixed hood
Winter cover	yes
Window cover	yes
Cockpit table	yes
Boarding ladder	stainless steel
Deck shower	yes
Anchor	Delta
Anchor chain	60 mtr.
Chain counter	yes
Windlass	electrical Muir - 2015 - with wireless remote control
Outboard support	yes
Sea railing	wire
Grab rail (superstructure)	teak
Railing side opening gates	yes
Pushpit	2x with seat
Pulpit	yes
Radar reflector	yes
Fenders	yes
Mooring lines	yes
Spare parts	for motor, gearbox and propeller
Radio-cd player	yes
Cockpit speakers	yes
Speakers in salon	yes
Clock - barometer	yes
Fire extinguisher	yes



# HALLBERG RASSY 42 KETCH

## RIGGING

Rigging	ketch
Standing rigging	wire New 2017 / 2018
Brand mast	Seldén
Material mast	aluminium
Spreaders	2 pair
Mainsail	yes
Mainsail cover	yes
Mizzen	yes
Mizzen sailcover	yes
Genoa	yes
Genoa furler	yes
Genoa cover	yes
Gennaker	With snuffer - 2017
Reefing System	slabreefing
Backstay adjuster	mechanical 2x
Boomvang	tackle
Primary sheet winch	2x Lewmar 46
Genoa sheetwinches	2x Lewmar 48
Halyard winches	3x Lewmar 40 on masts
Reefing winch	1x Antal 16.2 on mast
Spi-pole	aluminium
Gennaker pole	aluminium
Extra info	all sails are in very good condition





# HALLBERG RASSY 42 KETCH



# HALLBERG RASSY 42 KETCH





# HALLBERG RASSY 42 KETCH

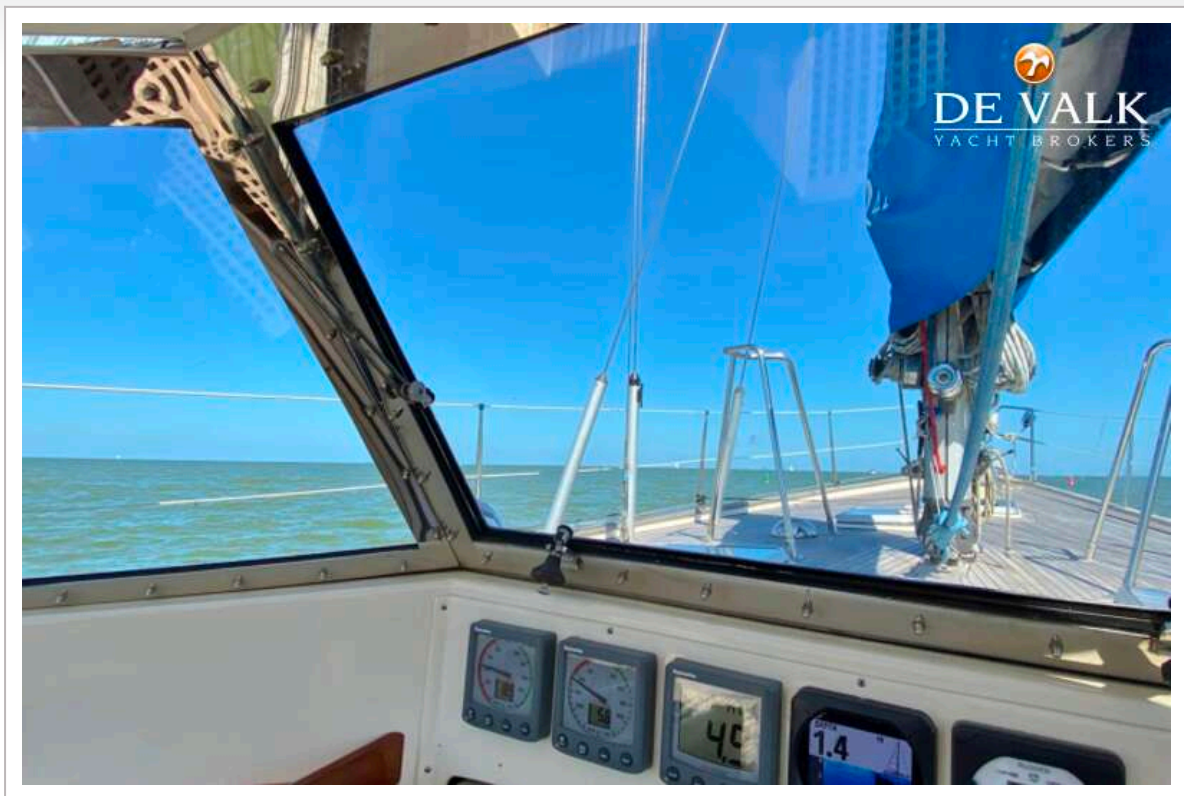




# HALLBERG RASSY 42 KETCH



# HALLBERG RASSY 42 KETCH





# HALLBERG RASSY 42 KETCH



# HALLBERG RASSY 42 KETCH





# HALLBERG RASSY 42 KETCH





# HALLBERG RASSY 42 KETCH



# HALLBERG RASSY 42 KETCH





# HALLBERG RASSY 42 KETCH

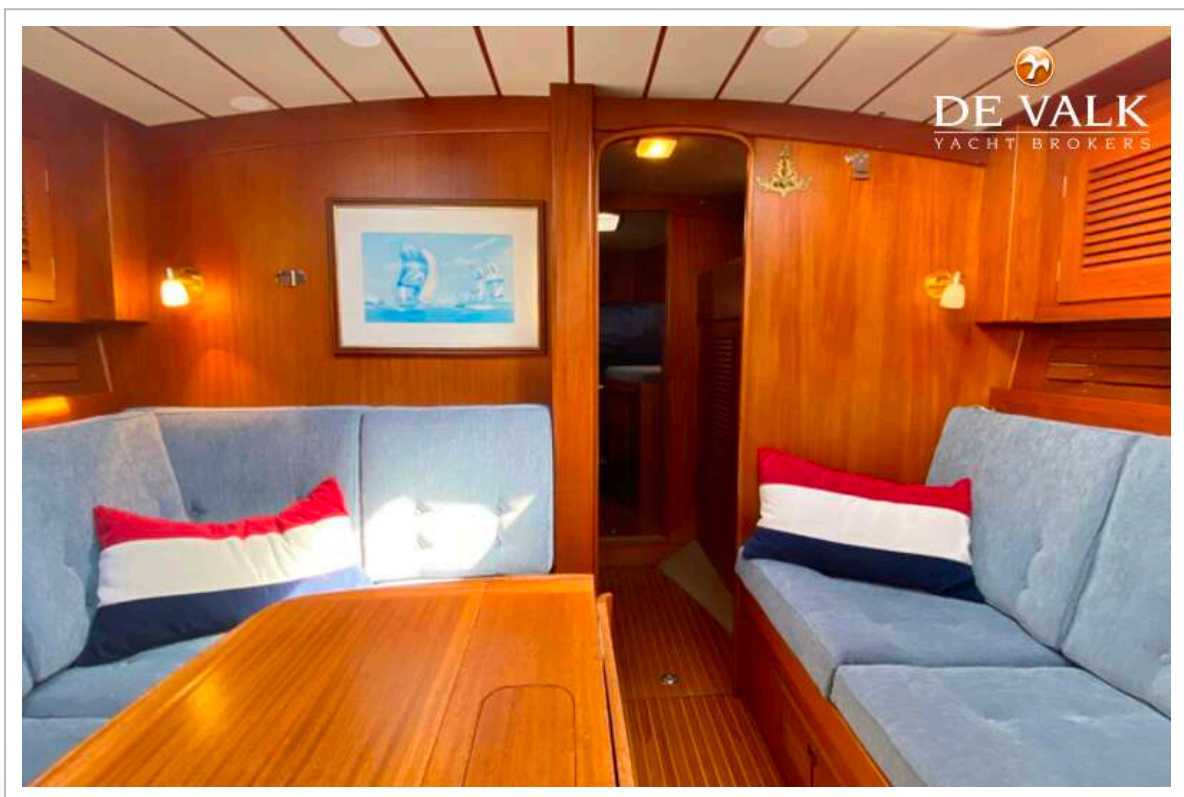
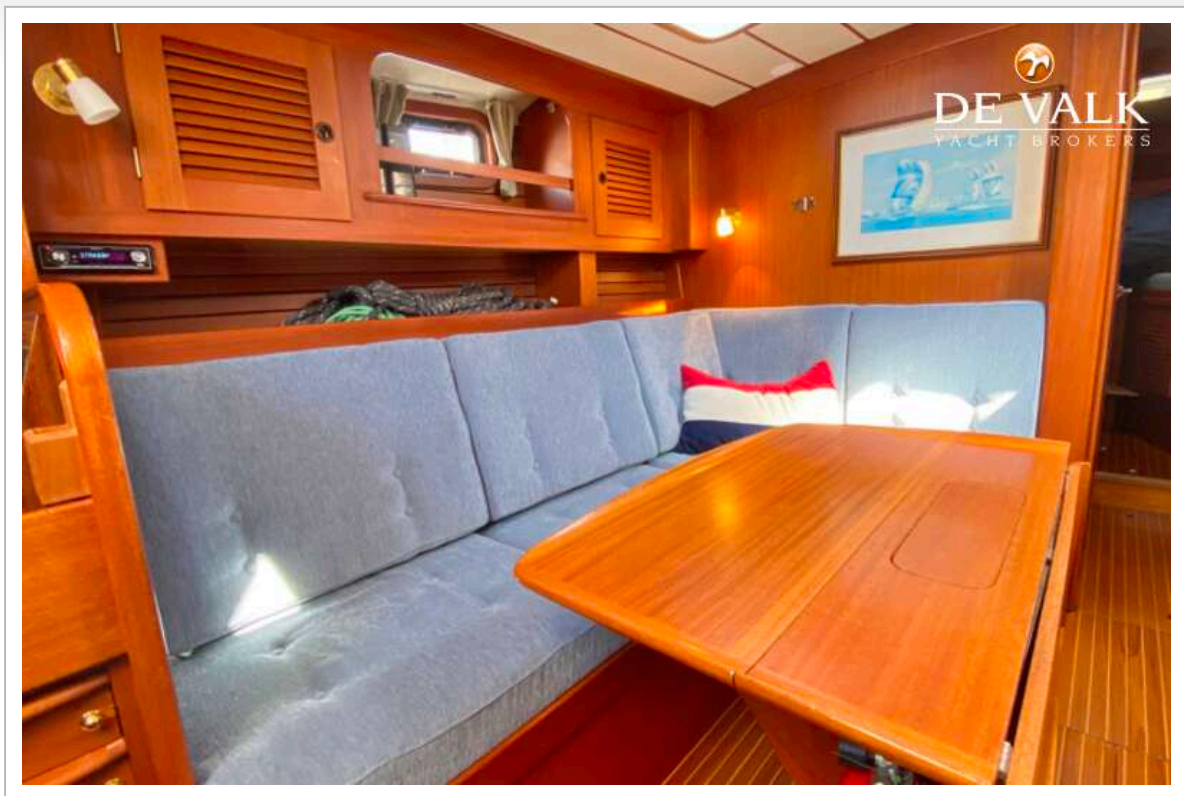


# HALLBERG RASSY 42 KETCH

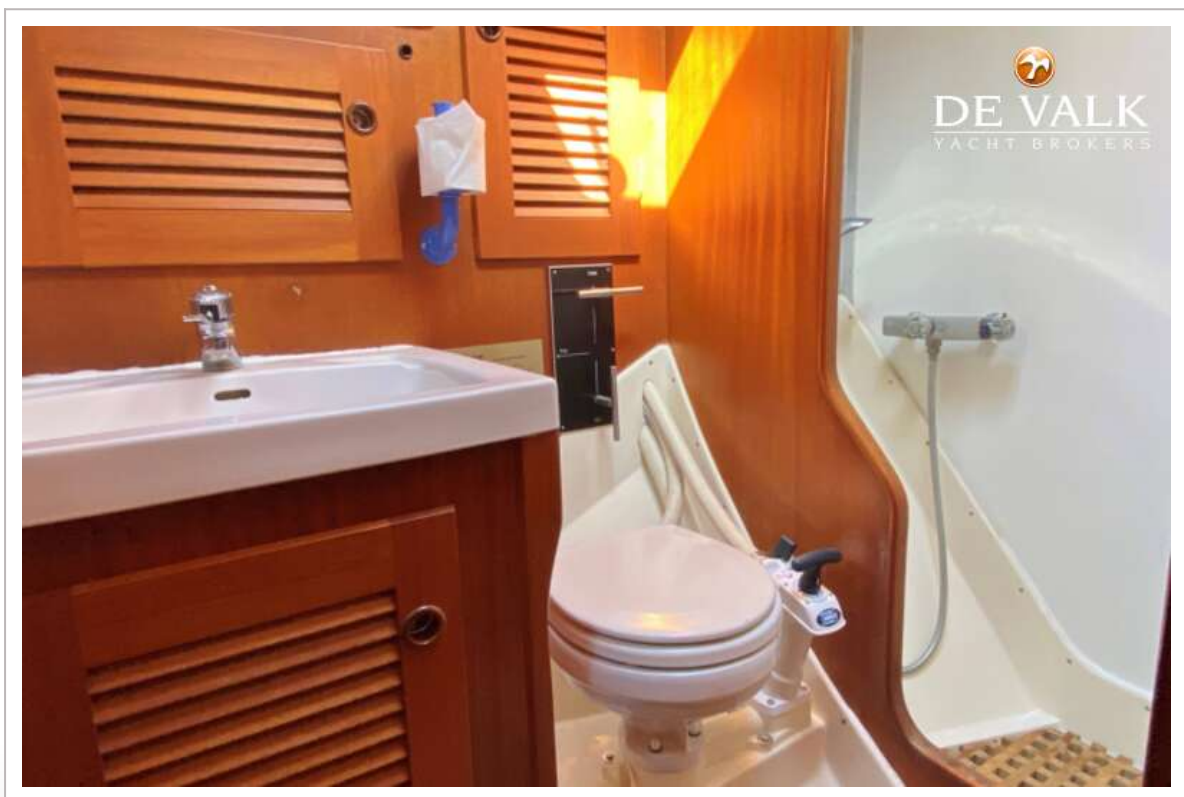
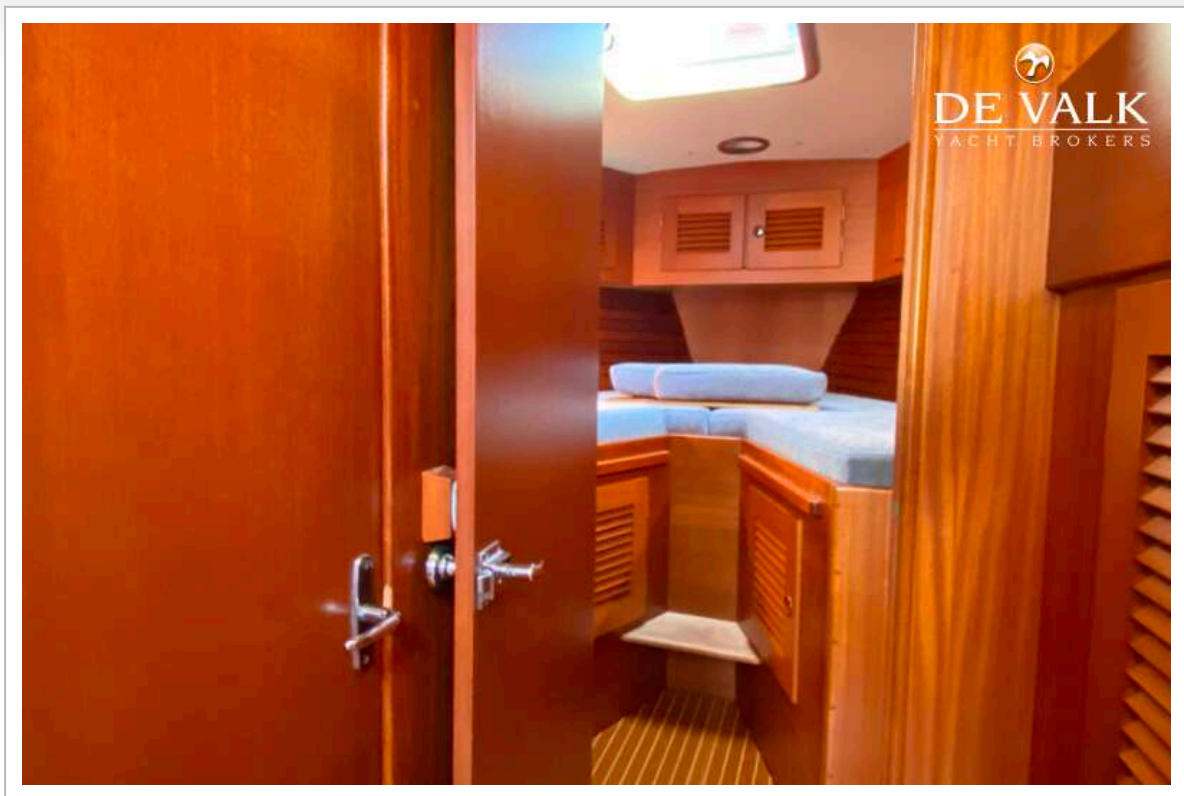




# HALLBERG RASSY 42 KETCH

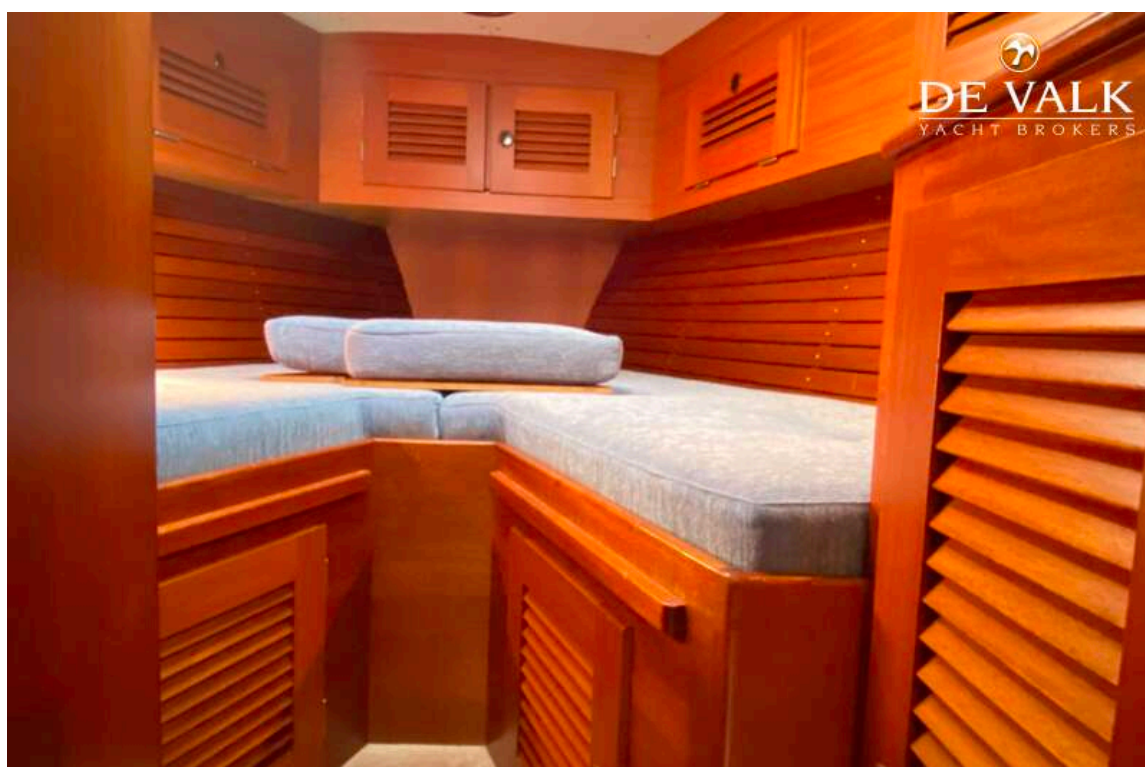


# HALLBERG RASSY 42 KETCH

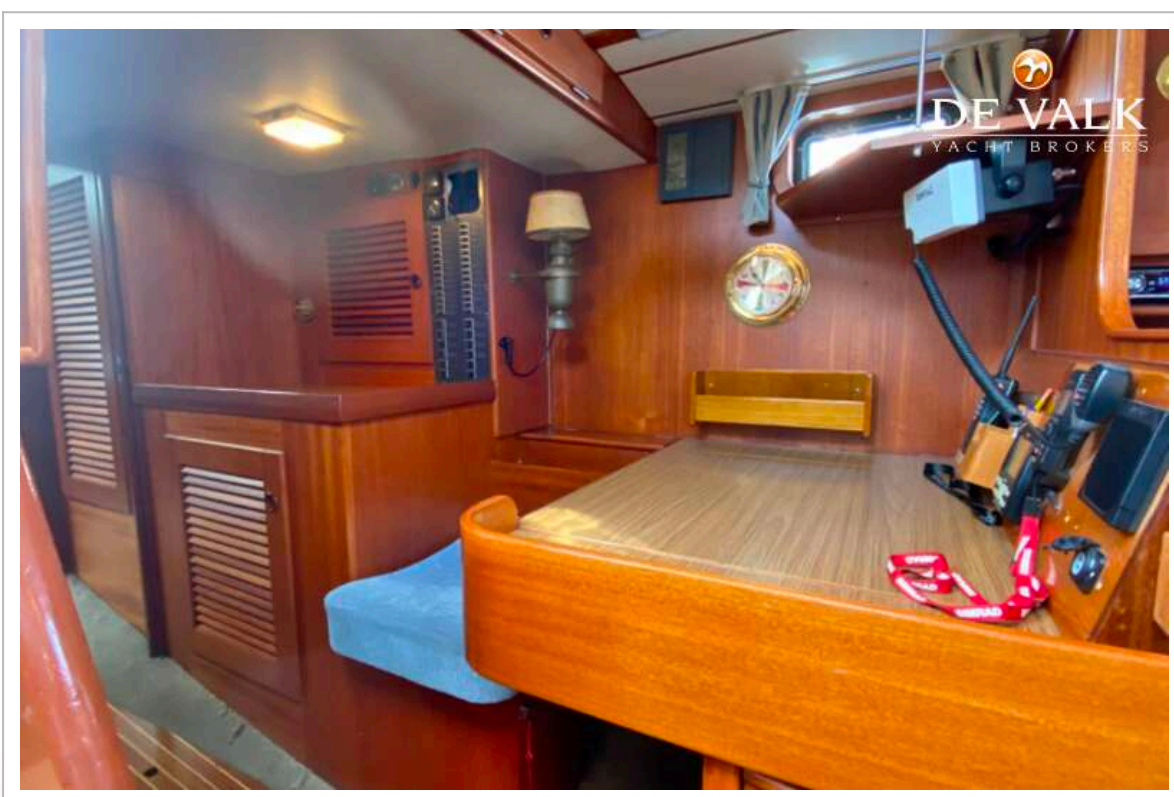




# HALLBERG RASSY 42 KETCH

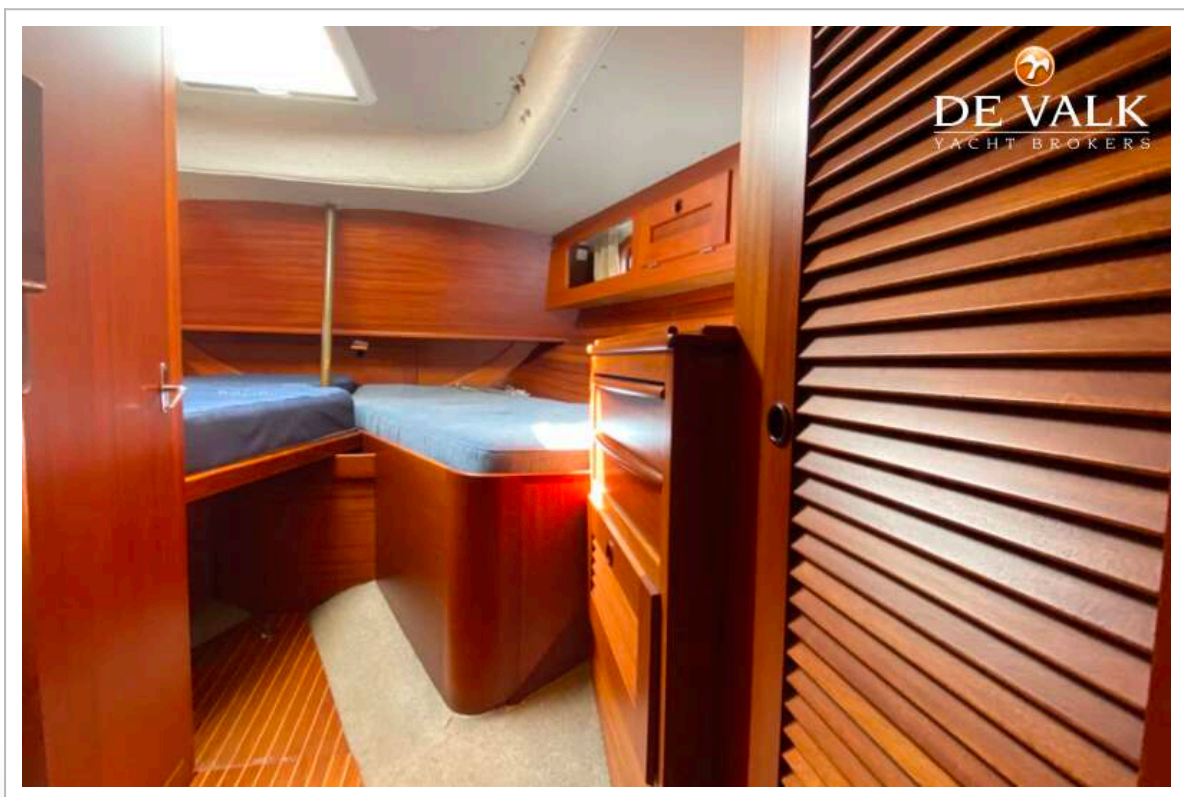
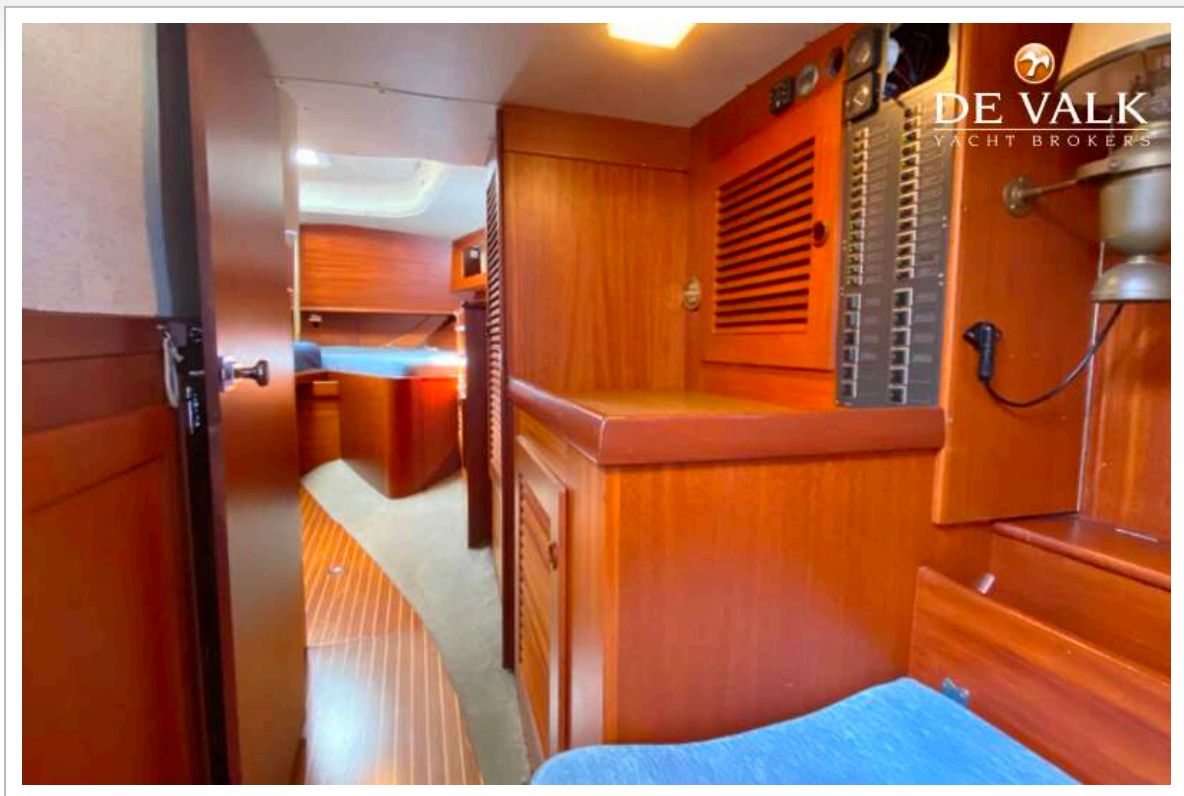


# HALLBERG RASSY 42 KETCH

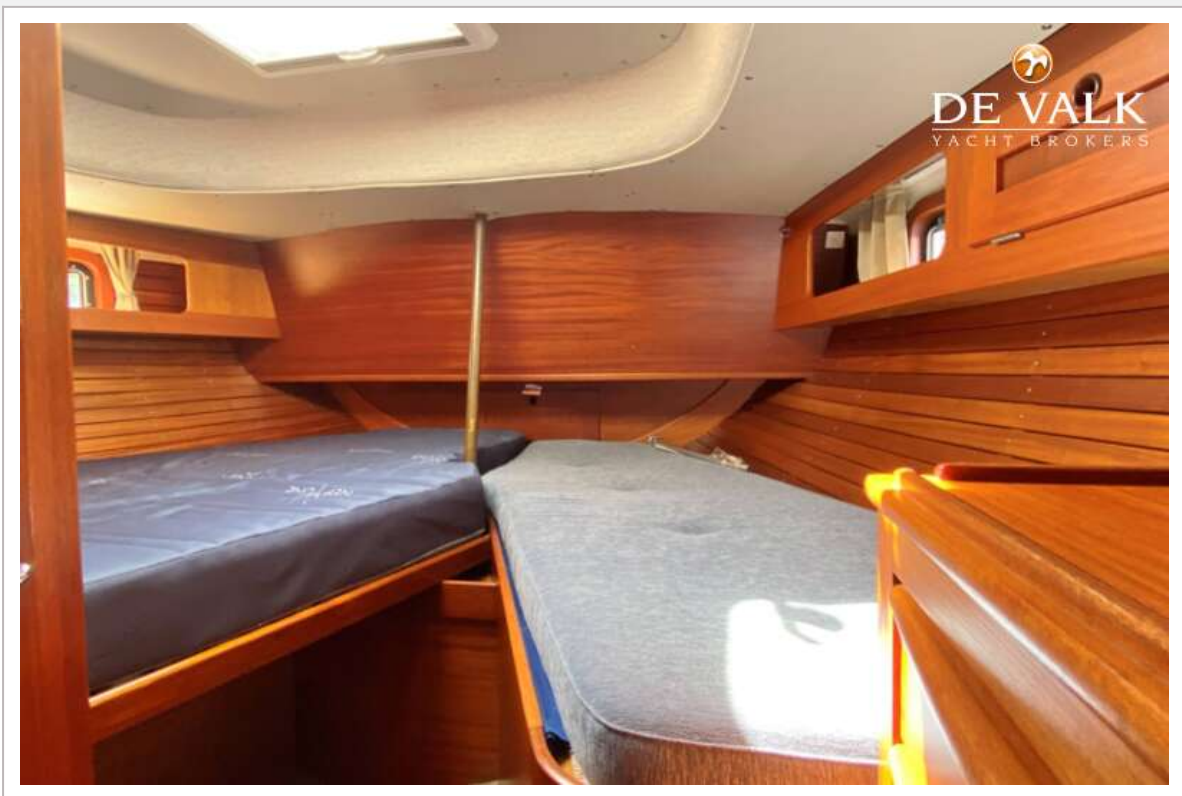




# HALLBERG RASSY 42 KETCH



# HALLBERG RASSY 42 KETCH



# HALLBERG RASSY 42 KETCH

