



DE VALK  
YACHT BROKERS



## BAVARIA 36 HOLIDAY



DE VALK  
YACHT BROKERS

# BAVARIA 36 HOLIDAY

## BROKER'S COMMENTS

Looking for a nice and reliable family yacht? This Bavaria 36 Holiday is definitely worth your attention. More spacious than the Bavaria 36 2000 series, the 36 Holiday has a higher quality of finish, and among other things has a German Lloyds specification. Her interior woodwork is neat, she has lots of storage space and is much appreciated as a family yacht. Much has been renewed in recent years, including sails, saloon upholstery, navigation instruments, etc. In short, a very attractive yacht now to be admired and inspected 7 days a week in our salesharbour in Hindeloopen.

*Johan Nooitgedagt*

## SPECIFICATIONS

<b>Dimensions</b>	11.55 x 3.68 x 1.35 (m)	<b>Builder</b>	Bavaria giebelstadt
<b>Built</b>	1999	<b>Cabins</b>	2
<b>Material</b>	GRP	<b>Berths</b>	5
<b>Engine(s)</b>	1 x Volvo Penta MD 2030 diesel	<b>Hp/Kw</b>	29.00 (hp), 21.32 (kw)
<b>Asking price</b>	sold (VAT )	<b>Lying</b>	contact Hindeloopen

## CONTACT

<b>Sales office</b>	De Valk Hindeloopen B.V.	<b>Telephone</b>	+31 514 52 40 00
<b>Address</b>	Oosterstrand 1 8713 JS Hindeloopen NL	<b>E-mail</b>	hindeloopen@devalk.nl

## DISCLAIMER

These particulars are given in good faith as supplied but cannot be guaranteed.



# BAVARIA 36 HOLIDAY

## GENERAL

<b>Model</b>	BAVARIA 36 HOLIDAY
<b>Type</b>	sailing yacht
<b>LOA (m)</b>	11,55
<b>LWL (m)</b>	8,90
<b>Beam (m)</b>	3,68
<b>Draft (m)</b>	1,35
<b>Air draft (m)</b>	16,50
<b>Headroom (m)</b>	1,85
<b>Year built</b>	1999
<b>Builder</b>	Bavaria giebelstadt
<b>Country</b>	Germany
<b>Designer</b>	J & J Design
<b>Displacement (t)</b>	5,5
<b>Ballast (tonnes)</b>	1,8
<b>CE norm</b>	A
<b>Hull material</b>	GRP
<b>Hull colour</b>	white
<b>Hull shape</b>	round-bilged
<b>Keel type</b>	fin keel
<b>Superstructure material</b>	GRP
<b>Rubbing strake</b>	aluminum
<b>Deck material</b>	GRP
<b>Deck finish</b>	2016 Flex teak
<b>Cockpit deck finish</b>	2016 Flex teak
<b>Antifouling (year)</b>	2019
<b>Dorades</b>	yes
<b>Window frame</b>	aluminium
<b>Window material</b>	polycarbonate
<b>Fuel tank (litre)</b>	polyethylene 150
<b>Level indicator (fuel tank)</b>	yes



Freshwater tank (litre)	polyethylene 150
Level indicator (freshwater)	yes
Wheel steering	mechanical
Emergency tiller	yes

## ACCOMMODATION

Cabins	2
Berths	5
Interior	mahogany
Layout	yes
Floor	teak and holly
Open cockpit	yes
Saloon	yes
Headroom saloon (m)	yes
Heating	diesel ducted hot air Webasto
Navigation center	yes
Chart table	yes
Aft Cabin	yes
Galley	yes
Countertop	corian
Sink	stainless steel
Cooker	calor gas
Oven	yes
Fridge	yes
Hot water system	220V + engine
Water pressure system	electrical
Owners cabin	v-bed Front
Bed length (m)	2,10
Wardrobe	hanging and shelves
Bathroom	shared
Toilet	shared



<b>Toilet system</b>	electric 2012 Jabsco
<b>Wash basin</b>	at the toilet
<b>Guest cabin 1</b>	double bed Rear
<b>Bed length (m)</b>	2,00
<b>Wardrobe</b>	hanging and shelves

## MACHINERY

<b>No of engines</b>	1
<b>Make</b>	Volvo Penta
<b>Type</b>	MD 2030
<b>HP</b>	29
<b>kW</b>	21,32
<b>Fuel</b>	diesel
<b>Maximum speed (kn)</b>	6,5
<b>Cruising speed (kn)</b>	5
<b>Consumption (l/hr)</b>	3,5
<b>Engine cooling system</b>	freshwater heat exchanger
<b>Drive</b>	sail-drive
<b>Saildrive seal</b>	2017
<b>Engine controls</b>	bowden cable
<b>Gearbox</b>	mechanical
<b>Bowthruster</b>	electric 2013 Sidepower
<b>Exhaust</b>	watercooled
<b>Propeller type</b>	yes
<b>Manual bilge pump</b>	yes
<b>Electric bilge pump</b>	yes
<b>Start battery</b>	1x Vetus 70 Ah
<b>Service battery</b>	1x Vetus 140 Ah
<b>Bowthruster battery</b>	1x Exide 70AH
<b>Battery monitor</b>	Victron BMV 602s
<b>Battery charger/inverter</b>	Victron Multiplus 1600w / 70 Amp



Shorepower with cable

## NAVIGATION

Compass	Bavaria
Depth sounder	Raymarine ST 60 Tri data
Depth sounder/log	Raymarine ST 60 Tridata
Log	Raymarine ST60 Graphic
Windset	Raymarine ST60 Wind
Repeater	Raymarine ST60 Graphic
VHF	2016 Raymarine Ray 260e Handset
VHF handheld	2016 Raymarine Ray 260e Handset
Autopilot	Raymarine ST6000+
Rudder angle indicator	Raymarine ST60 6000+
Radar	Does not work
Plotter/GPS	Raymarine Aixom 12" touch screen
AIS receiver	yes
AIS transponder	yes

## EQUIPMENT

Sprayhood	yes
Cockpit cover	yes
Bimini	yes
Cockpit cushions	yes
Cockpit table	yes
Cockpit chairs	yes
Bathing platform	yes
Boarding ladder	stainless steel
Deck shower	Warm & cold
Anchor	CQR Plough
Anchor chain	yes
Sea railing	wire



Pushpit	yes
Pulpit	yes
Radar reflector	yes
Fenders	yes
Mooring lines	yes
Spare parts	yes
TV	Philips
TV receiver	yes
Radio-cd player	yes
Cockpit speakers	yes
Speakers in salon	yes
Clock - barometer	yes
Fire extinguisher	yes

## RIGGING

Rigging	sloop
Standing rigging	wire
Brand mast	Seldén
Material mast	aluminium
Spreaders	1 pair
Mainsail	2018 Elvstrom DCX medium 26m2
Jib II	1999
Genoa	yes
Genoa I	1999
Genoa II	2018 Elvstrom DCX Light 140% 31m2
Genoa furler	yes
Reefing System	main in-mast furling
Backstay adjuster	mechanical
Boomvang	gasspring
Genoa sheetwinches	2x Harken ST40
Halyard winches	yes



Multifunctional winches

2x Harken ST32





# BAVARIA 36 HOLIDAY



# BAVARIA 36 HOLIDAY



# BAVARIA 36 HOLIDAY



# BAVARIA 36 HOLIDAY



# BAVARIA 36 HOLIDAY



# BAVARIA 36 HOLIDAY



# BAVARIA 36 HOLIDAY



# BAVARIA 36 HOLIDAY

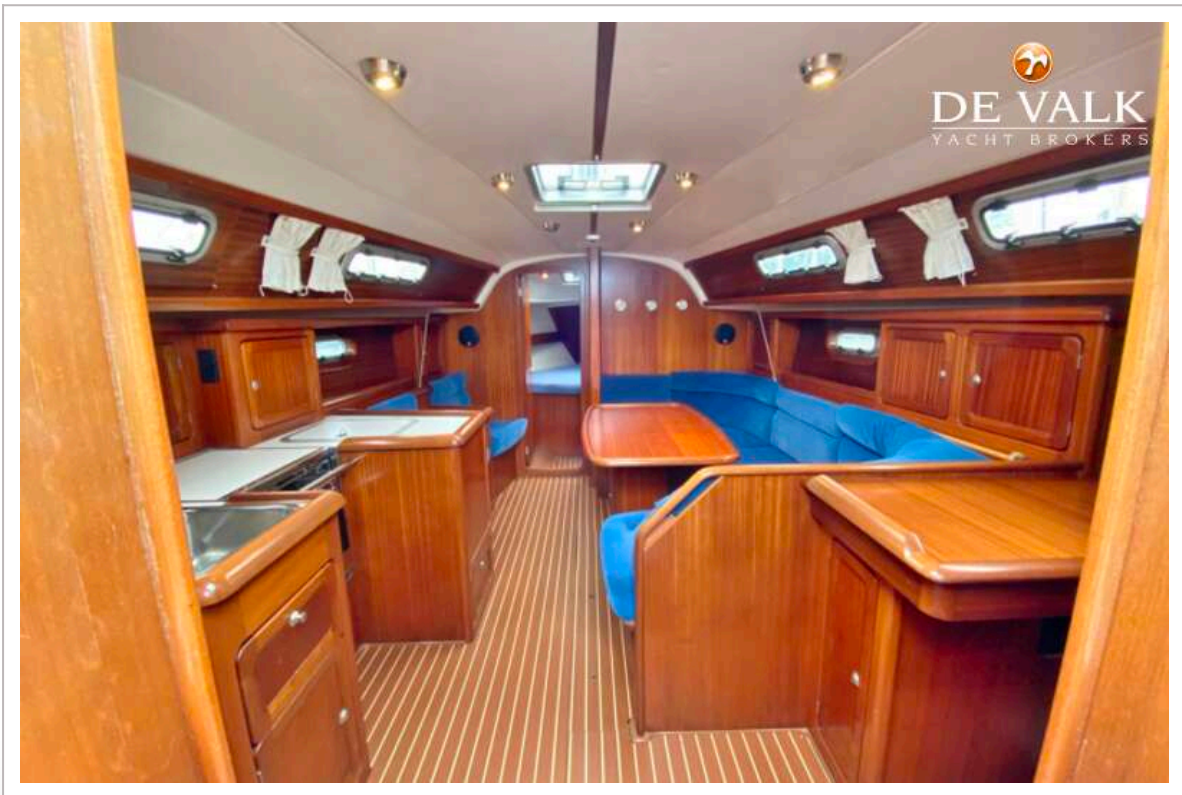




# BAVARIA 36 HOLIDAY



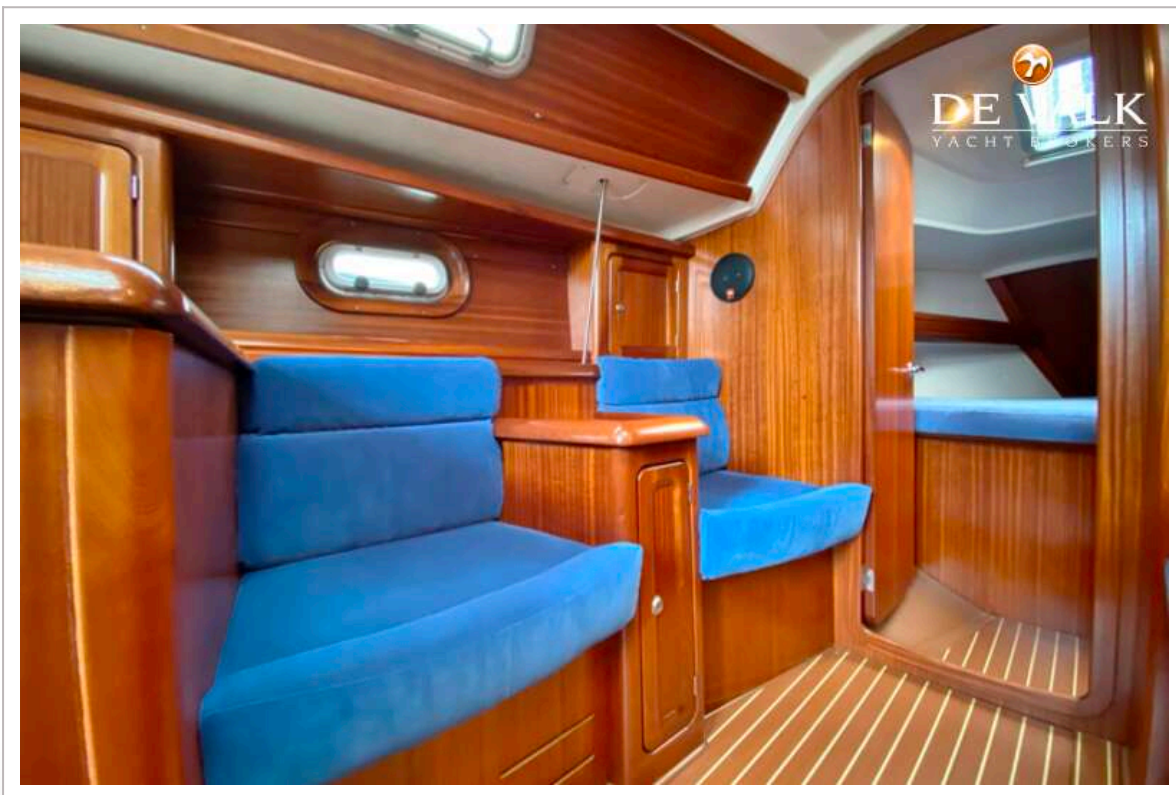
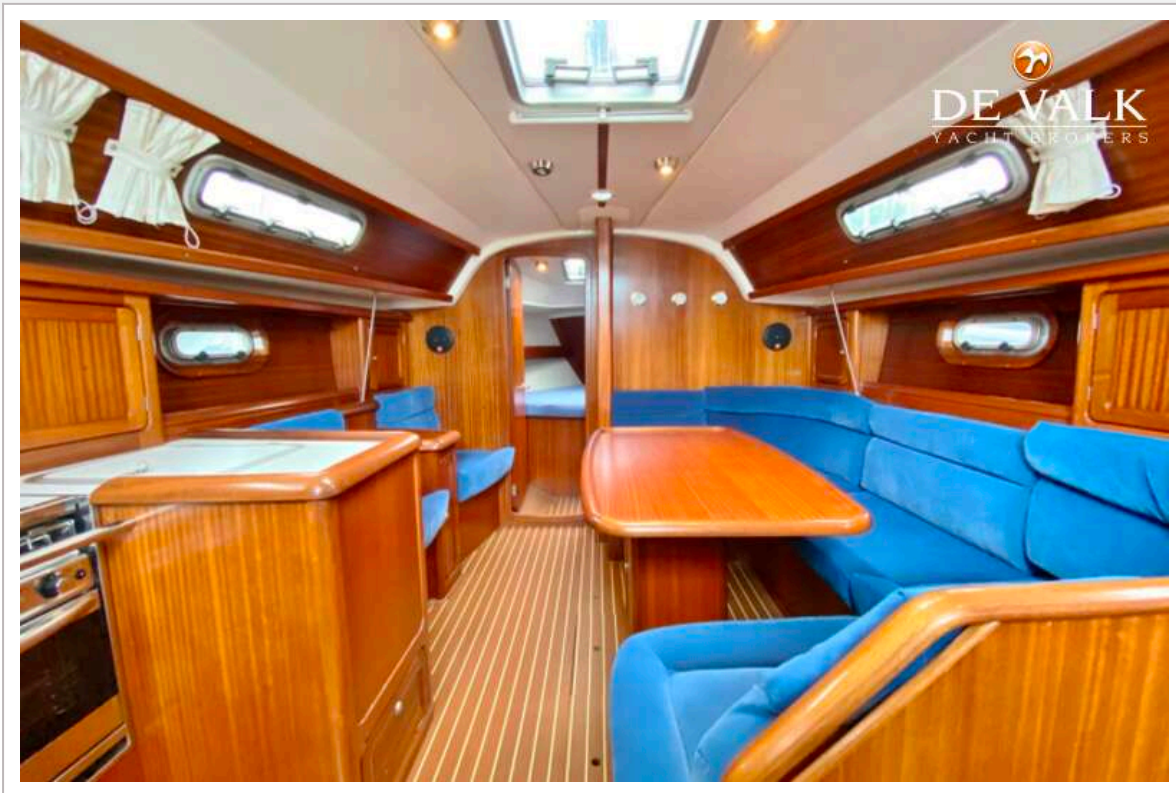
# BAVARIA 36 HOLIDAY



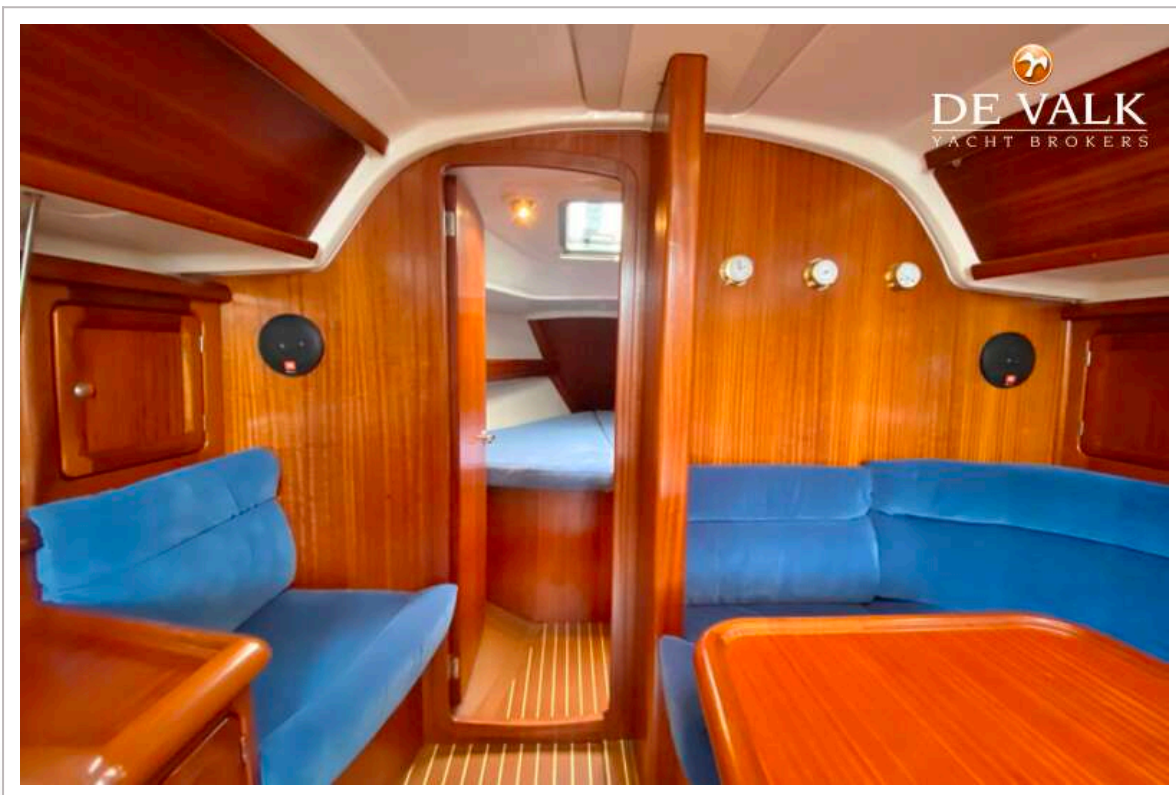
# BAVARIA 36 HOLIDAY



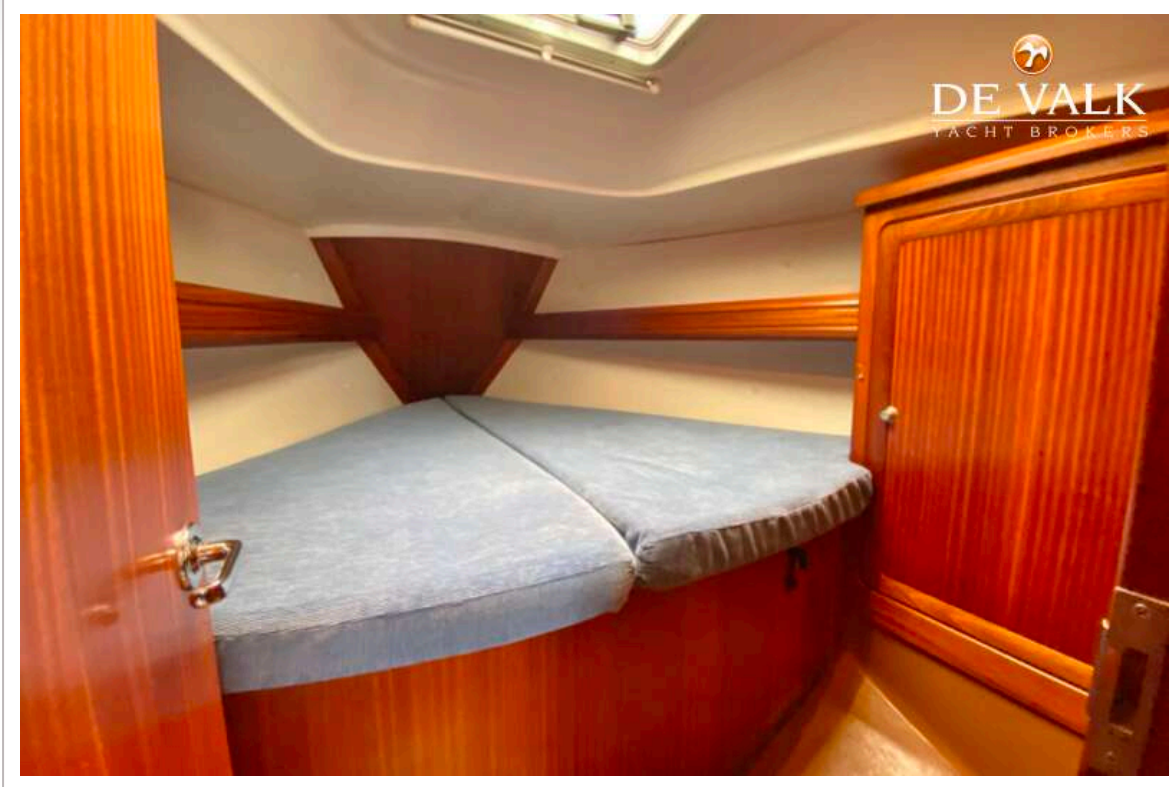
# BAVARIA 36 HOLIDAY



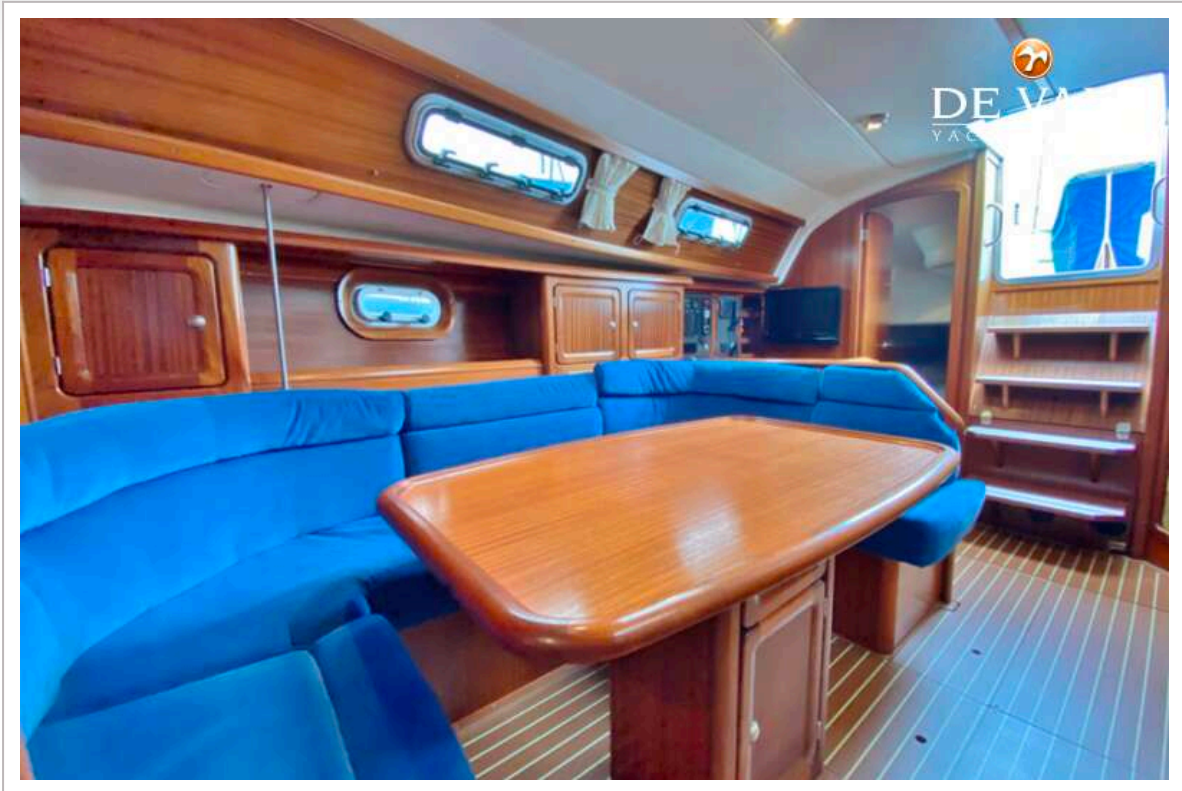
# BAVARIA 36 HOLIDAY



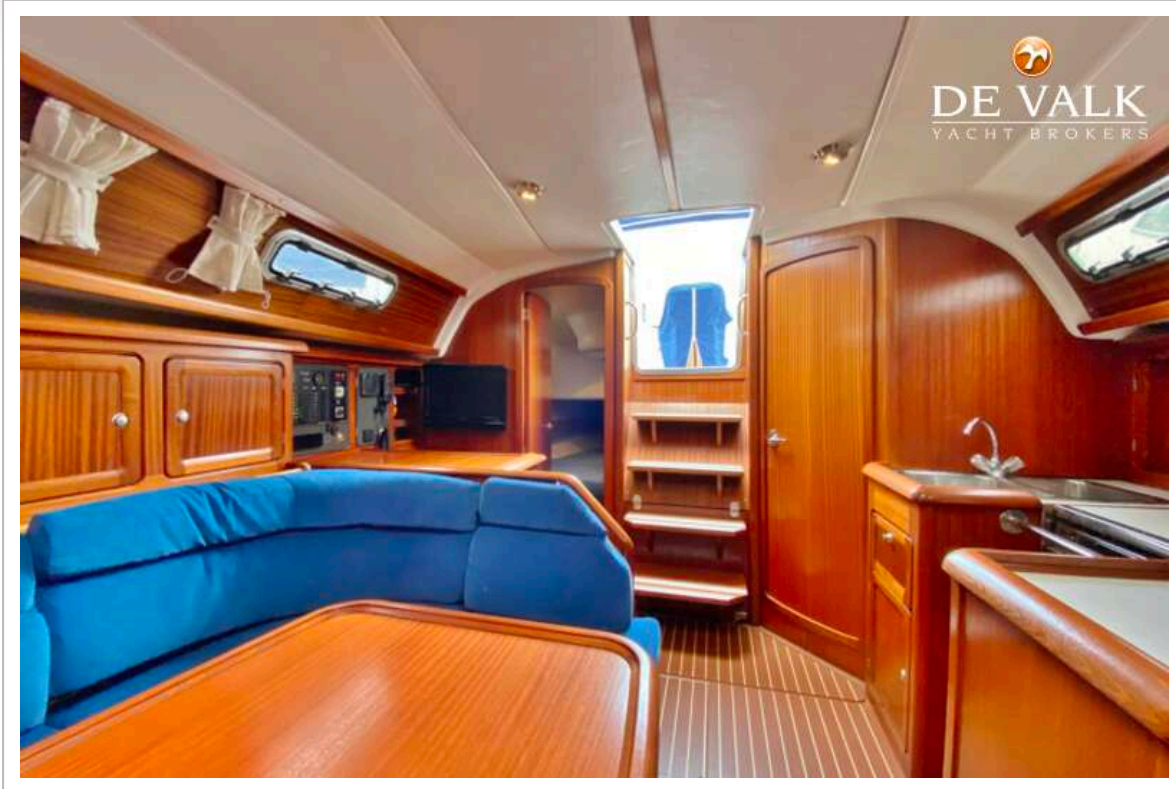
# BAVARIA 36 HOLIDAY



# BAVARIA 36 HOLIDAY

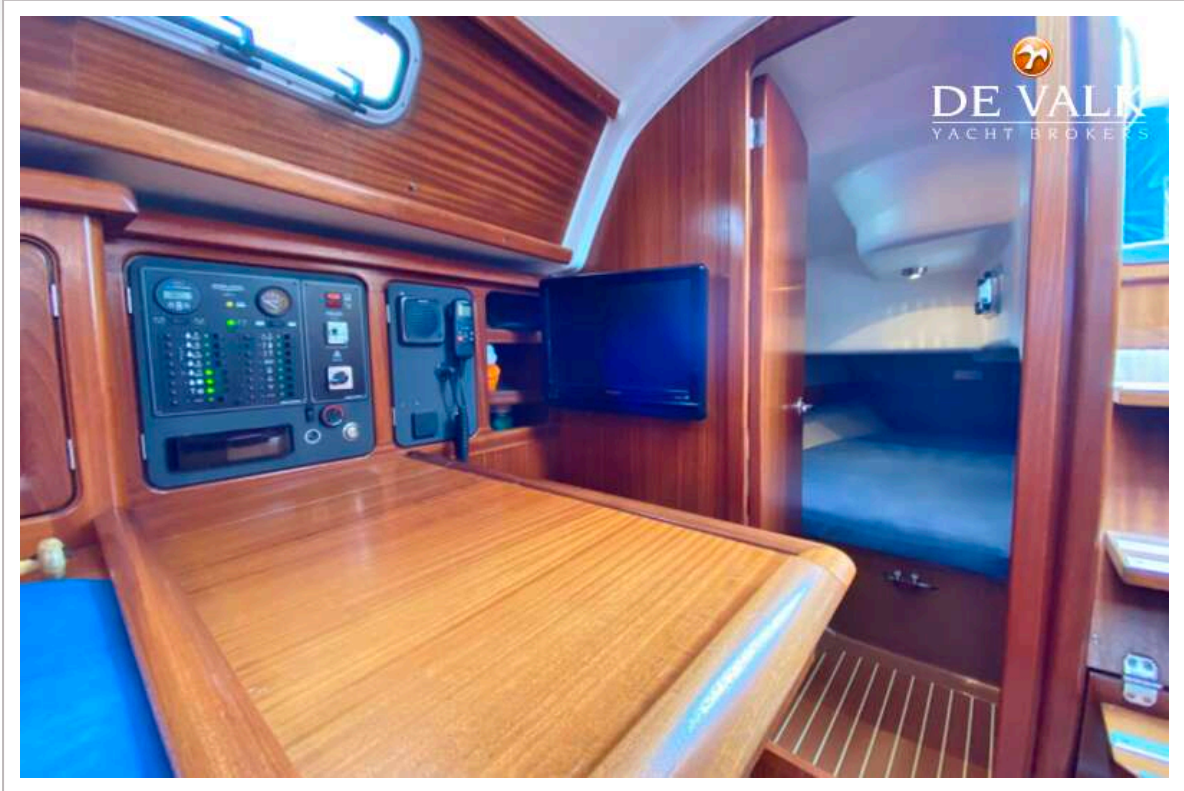


# BAVARIA 36 HOLIDAY





# BAVARIA 36 HOLIDAY



# BAVARIA 36 HOLIDAY

