



DE VALK
YACHT BROKERS



GRAND SOLEIL 46.3



DE VALK
YACHT BROKERS

BROKER'S COMMENTS

This very well maintained Grand Soleil 46.3 is well known for her elegant appearance and her performance abilities. "Vento" is best described as a fast modern cruising yacht for family and friends. She has excellent characteristics of sea kindliness, safety, comfort and superior internal space. Combine those features with the electric winches and retractable bowthruster, you have a winning combination. This Italian Swan is uniquely attractive in design, styling and performance. Now ready to be admired and inspected 7 days a week in our sales harbour in Hindeloopen

Johan Nooitgedagt

SPECIFICATIONS

Dimensions	14.30 x 4.40 x 2.20 (m)	Builder	Cantiere Del Pardo
Built	1997	Cabins	3
Material	GRP	Berths	7
Engine(s)	1 x Yanmar 4JH2E diesel	Hp/Kw	62.00 (hp), 45.57 (kw)
Asking price	sold (VAT)	Lying	elsewhere / Not at sales office

CONTACT

Sales office	De Valk Hindeloopen B.V.	Telephone	+31 514 52 40 00
Address	Oosterstrand 1 8713 JS Hindeloopen NL	E-mail	hindeloopen@devalk.nl

DISCLAIMER

These particulars are given in good faith as supplied but cannot be guaranteed.



GENERAL

Model	GRAND SOLEIL 46.3
Type	sailing yacht
LOA (m)	14,30
LWL (m)	11,90
Beam (m)	4,40
Draft (m)	2,20
Air draft (m)	20,50
Headroom (m)	1,97
Year built	1997
Builder	Cantiere Del Pardo
Country	Italy
Designer	J&J Design
Displacement (t)	11,5
Ballast (tonnes)	lead 4,1
CE norm	NA
Hull material	GRP
Hull colour	blue
Hull shape	round-bilged
Keel type	fin keel
Superstructure material	GRP
Rubbing strake	stainless steel
Deck material	GRP
Deck finish	teak
Cockpit deck finish	teak
Antifouling (year)	2020
Dorades	2019 2x Stainless steel
Window frame	aluminium
Window material	polycarbonate
Deckhatch	Refurbished 6x
Portholes	aluminium



Fuel tank (litre)	stainless steel 200
Level indicator (fuel tank)	yes
Freshwater tank (litre)	stainless steel 2 x 225
Blackwater tank (litre)	stainless steel
Blackwater tank extraction	pump
Wheel steering	cable steering
Emergency tiller	yes
More info on paintwork	2012 professionally painted by Joose

ACCOMMODATION

Cabins	3
Berths	7
Interior	teak
Floor	teak and holly
Open cockpit	yes
Saloon	With U-shaped settee
Headroom saloon (m)	1,97 -1,85
Heating	diesel ducted hot air Eberspacher D5L
Chart table	yes
Dinette	yes
Galley	yes
Countertop	corian
Sink	stainless steel
Cooker	calor gas 3 burner
Oven	yes
Fridge	2019
Hot water system	220V + engine 2019 Quick boiler
Water pressure system	electrical
Owners cabin	French bed Front
Bed length (m)	2019 Mattress 2,10 x 1,60
Wardrobe	hanging and drawers



Bathroom	shared
Toilet	shared
Toilet system	electric
Wash basin	in the bathroom
Shower	shared
Guest cabin 1	double bed
Bed length (m)	2019 Mattress 2,00 x 1,40
Wardrobe	hanging and shelves
Bathroom	shared
Toilet	shared
Toilet system	electric
Wash basin	at the toilet
Shower	shared
Guest cabin 2	double bed
Bed length (m)	2019 Mattress 2,00 x 1,40
Wardrobe	hanging and shelves
Extra info	Tastefully italian styler interior.

MACHINERY

No of engines	1
Make	Yanmar
Type	4JH2E
HP	62
kW	45,57
Fuel	diesel
Year installed	1997
Engine hours	1600
Engine cooling system	freshwater heat exchanger
Drive	sail-drive
Saildrive seal	Twin sealed
Engine controls	bowden cable



Bowthruster	electric Sidepower 185 retractable
Exhaust	watercooled
Propeller type	feathering Max prop
Propeller blades	3
Manual bilge pump	yes
Electric bilge pump	yes
Electrical installation	yes
Start battery	2012 1x
Service battery	2012 3x
Bowthruster battery	2018 2x
Battery monitor	yes
Battery charger	Quick SBC700 60Amp
Inverter	yes
Diode battery combiners	yes
Shorepower	with cable

NAVIGATION

Compass	yes
Depth sounder	2019 Raymarine I70s
Depth sounder/log	2019 Raymarine I70s
Log	2019 Raymarine I70s
Windset	2019 Raymarine I70s
Repeater	2019 Raymarine I70s
VHF	2019 Simrad
VHF handheld	B & G 2019
Autopilot	2019 Raymarine
Plotter	2019 Raymarine Axiom 9" 2x
AIS receiver	2019 Raymarine
AIS transponder	2019 Raymarine

EQUIPMENT



Sprayhood with grab rail	yes
Cockpit cover	yes
Winter cover	2019 De Vries Makkum
Cockpit cushions	2019
Cockpit table	yes
Boarding ladder	stainless steel
Deck shower	yes
Anchor	Bruce 2019 20kg
Anchor chain	40m
Anchor 2	CQR Plough
Windlass	electrical & remote
Outboard support	yes
Sea railing	wire
Railing side opening gates	yes
Pushpit	yes
Pulpit	yes
Life raft	container 2019
Life raft (pers)	container 6
Lifebuoy	yes
Danbuoy	yes
Radar reflector	yes
Fenders	yes
Mooring lines	yes
Spare parts	yes
Radio	yes
Radio-cd player	Pioneer
Cockpit speakers	yes
Speakers in salon	yes
Clock - barometer	yes
Fire extinguisher	yes



RIGGING

Rigging	sloop
Standing rigging	wire 2004
Brand mast	Sparcraft 2004
Material mast	aluminium
Spreaders	3 pair
Keel stepped mast	yes
Mainsail	2004
Mainsail cover	2007 + lazy jacks
Battcars	Harken
Fully battened mainsail	2004 Witte vrongel
High aspect	2010 Hagoort
Genoa	2004 Witte vrongel
Genoa furler	2004 Facnor
Genoa cover	yes
Gennaker	2012 Hagoort 120m2 with snuffer
Spinnaker	North Sails 160m2 with snuffer
Reefing System	quick-one-line-reefing
Backstay adjuster	mechanical
Boomvang	gasspring Bamar
Genoa sheetwinches	2x Harken ST46 Electric
Spinnaker winch	2x Harken 48ST
Spi-pole	carbon



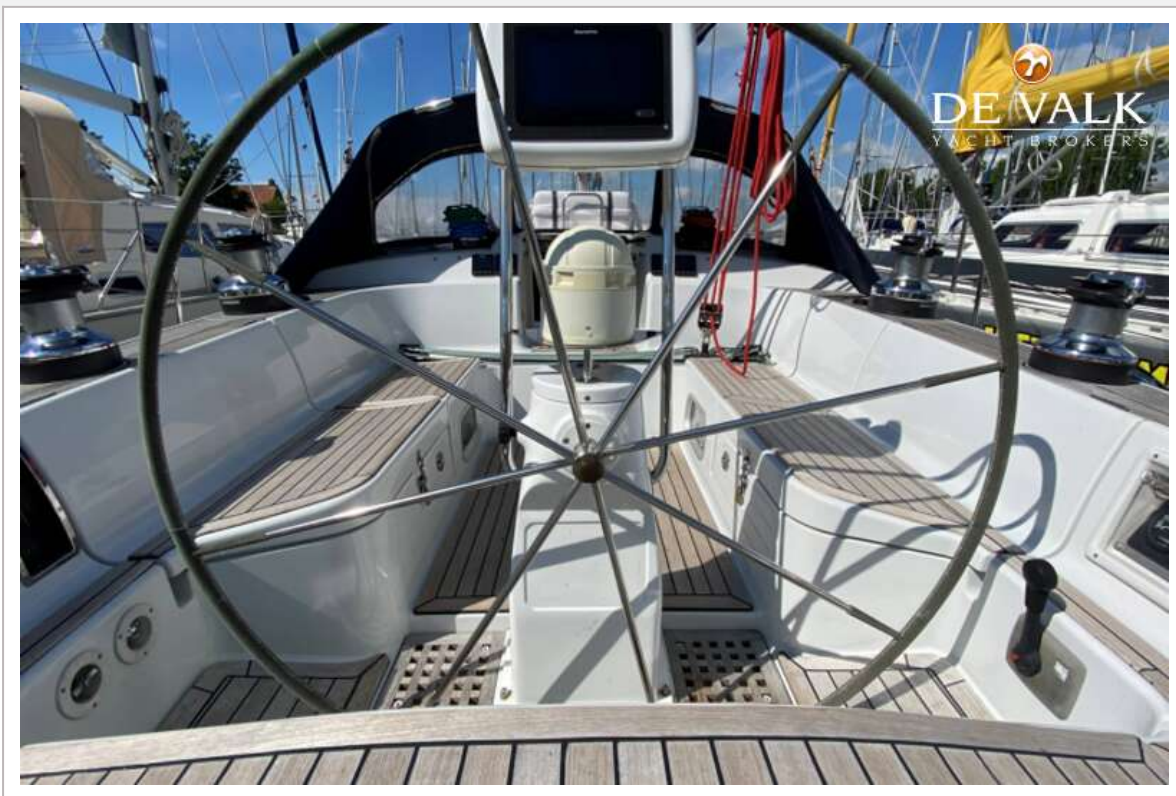
GRAND SOLEIL 46.3



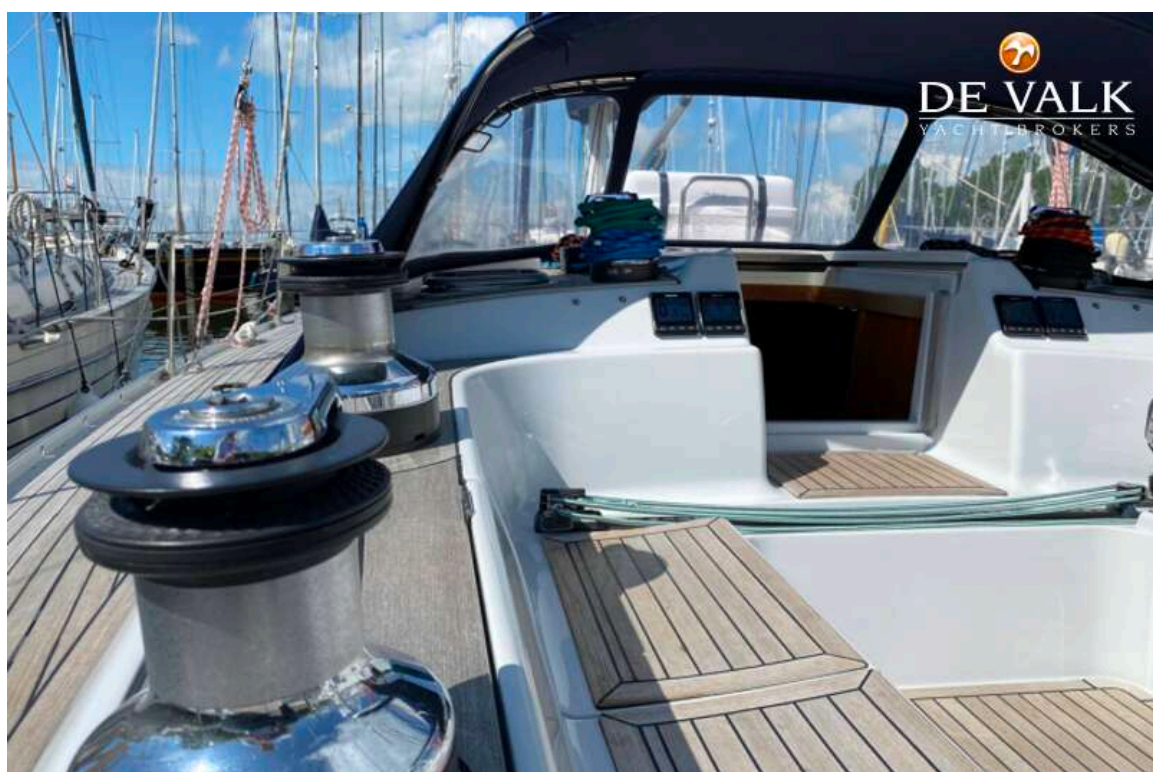
GRAND SOLEIL 46.3



GRAND SOLEIL 46.3



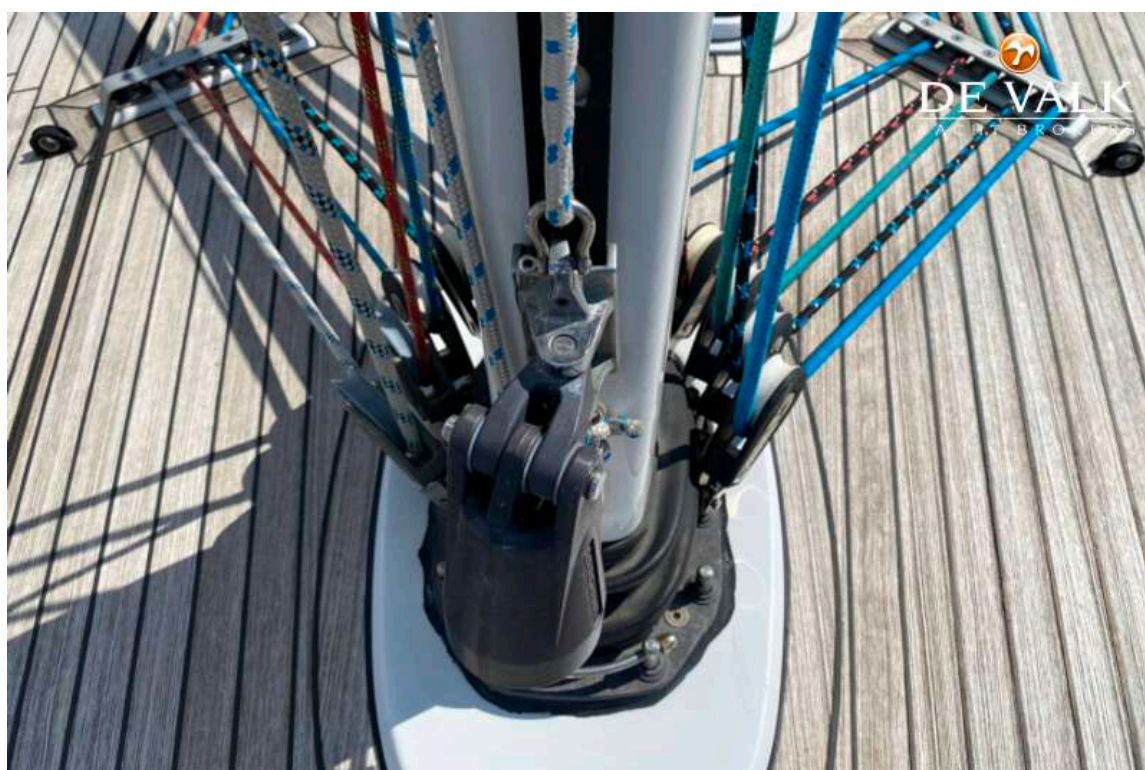
GRAND SOLEIL 46.3



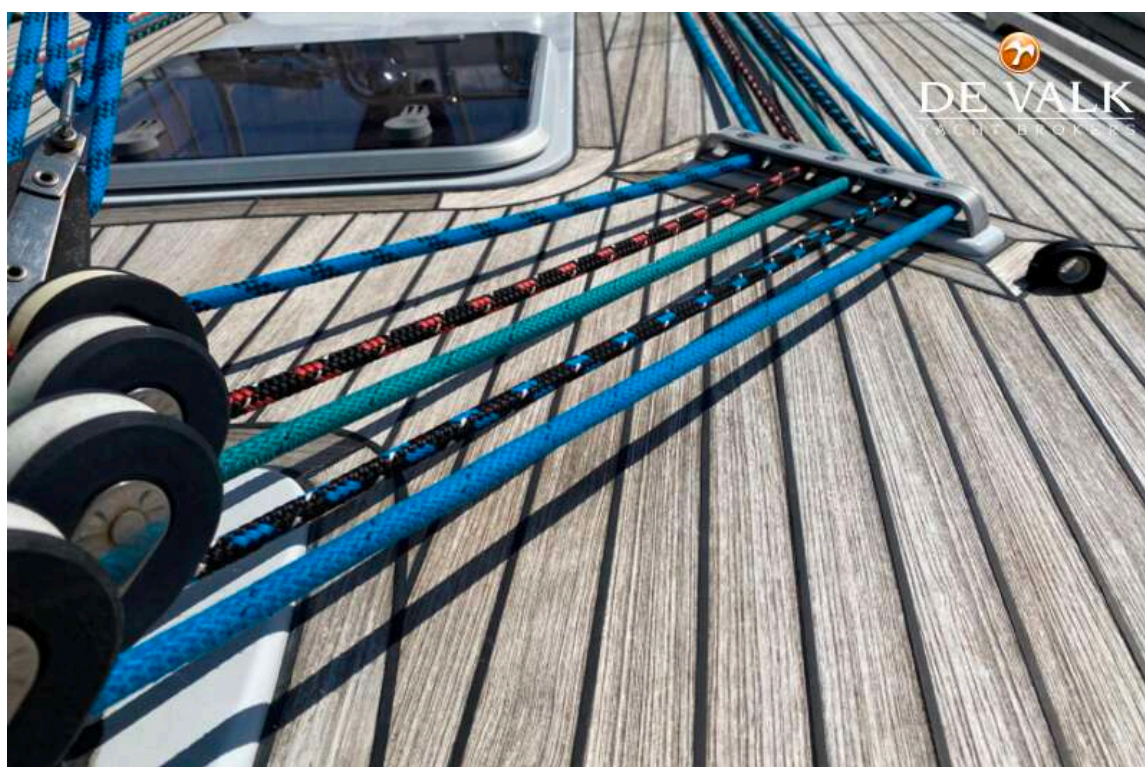
GRAND SOLEIL 46.3



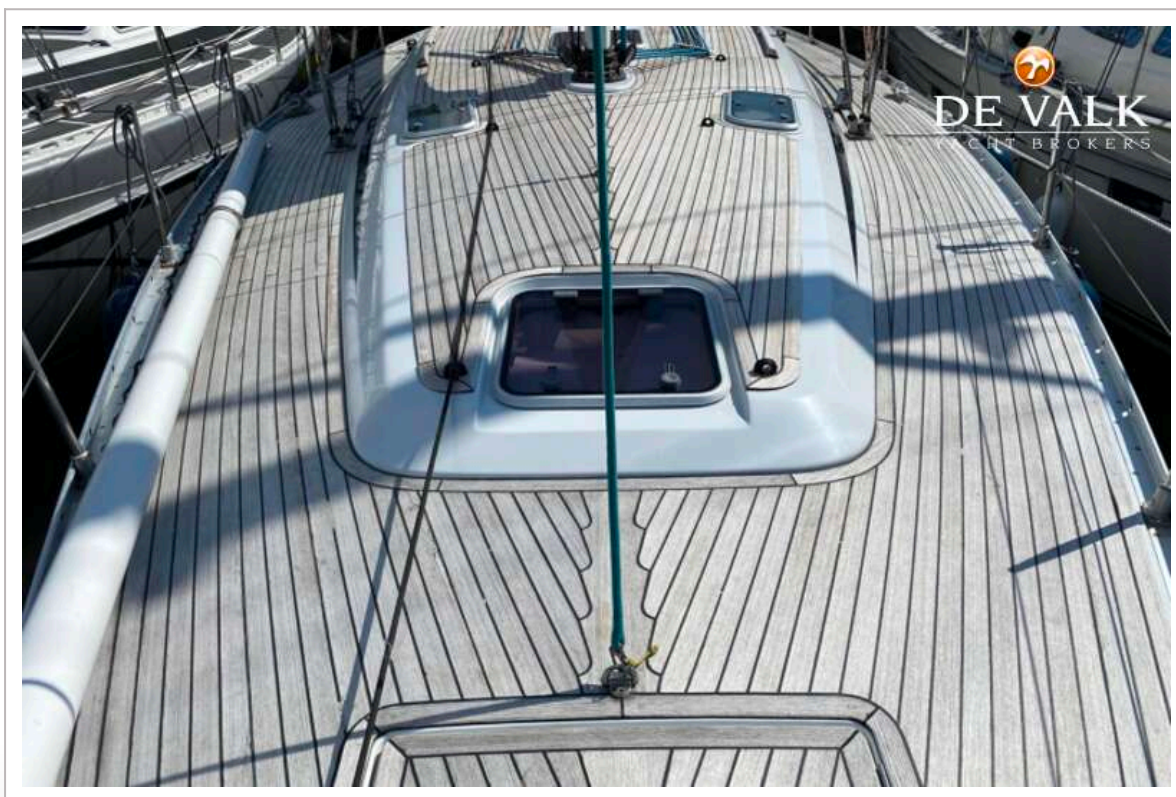
GRAND SOLEIL 46.3



GRAND SOLEIL 46.3



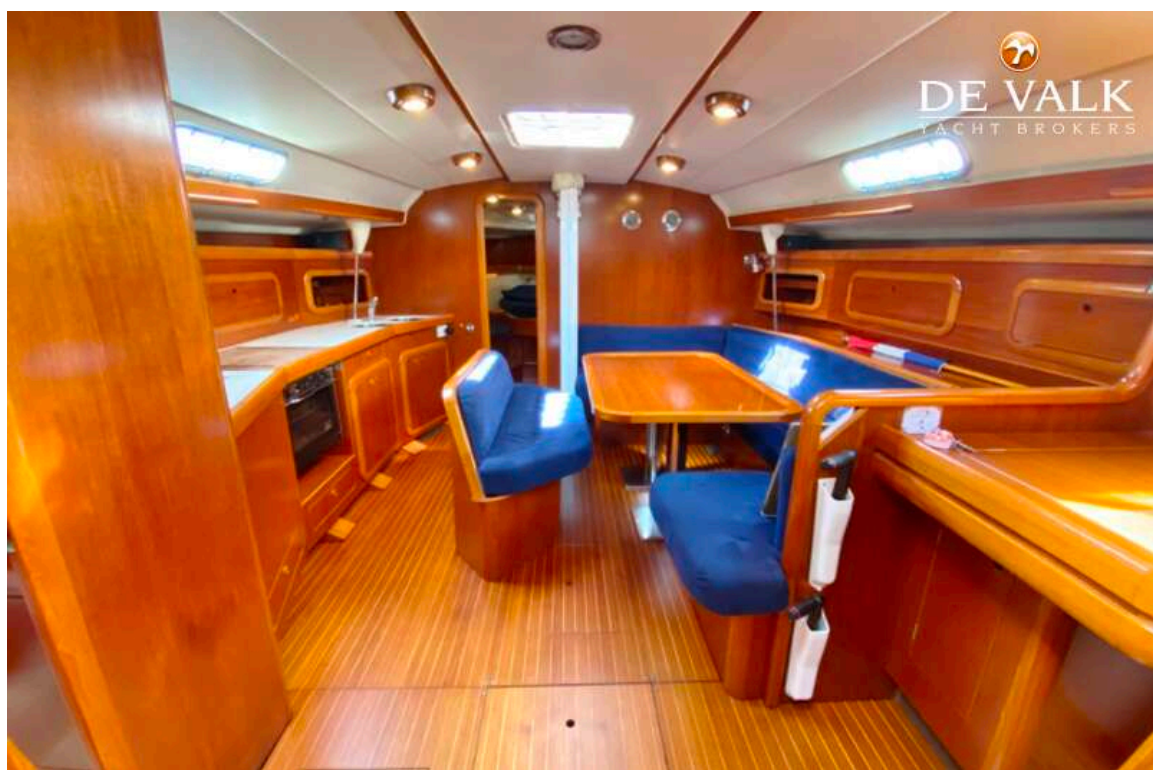
GRAND SOLEIL 46.3



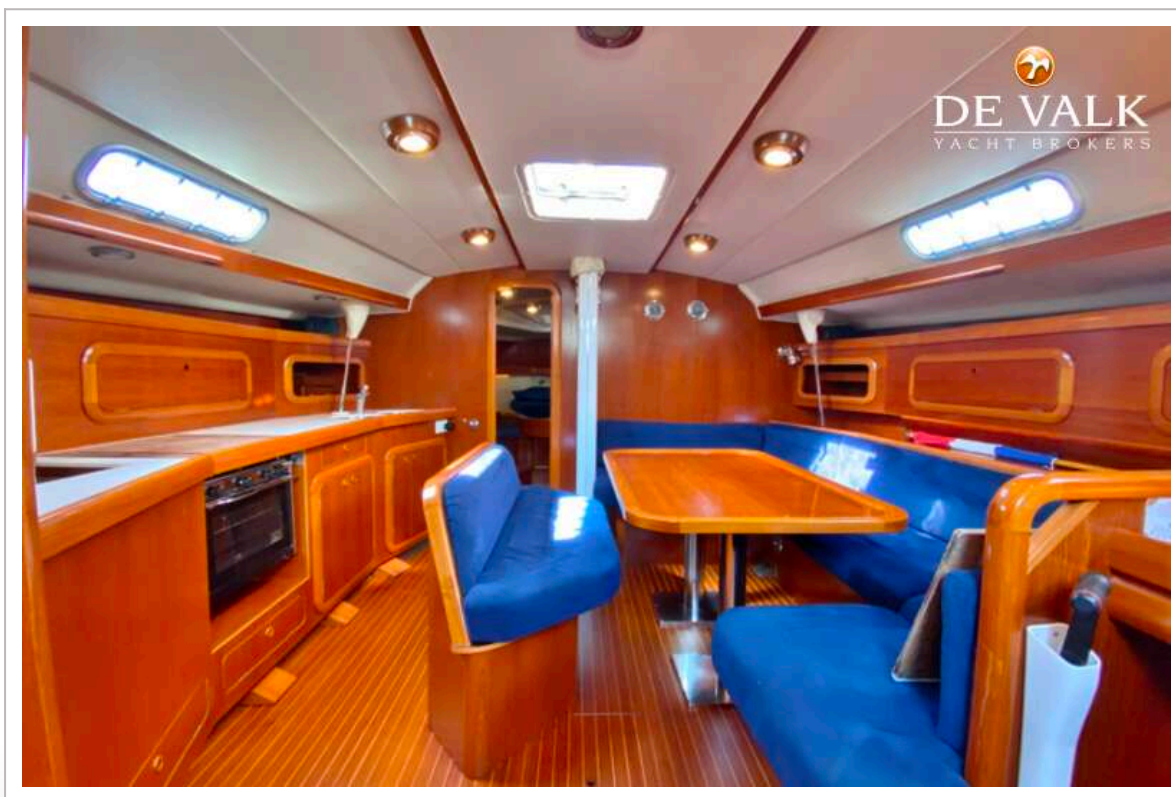
GRAND SOLEIL 46.3



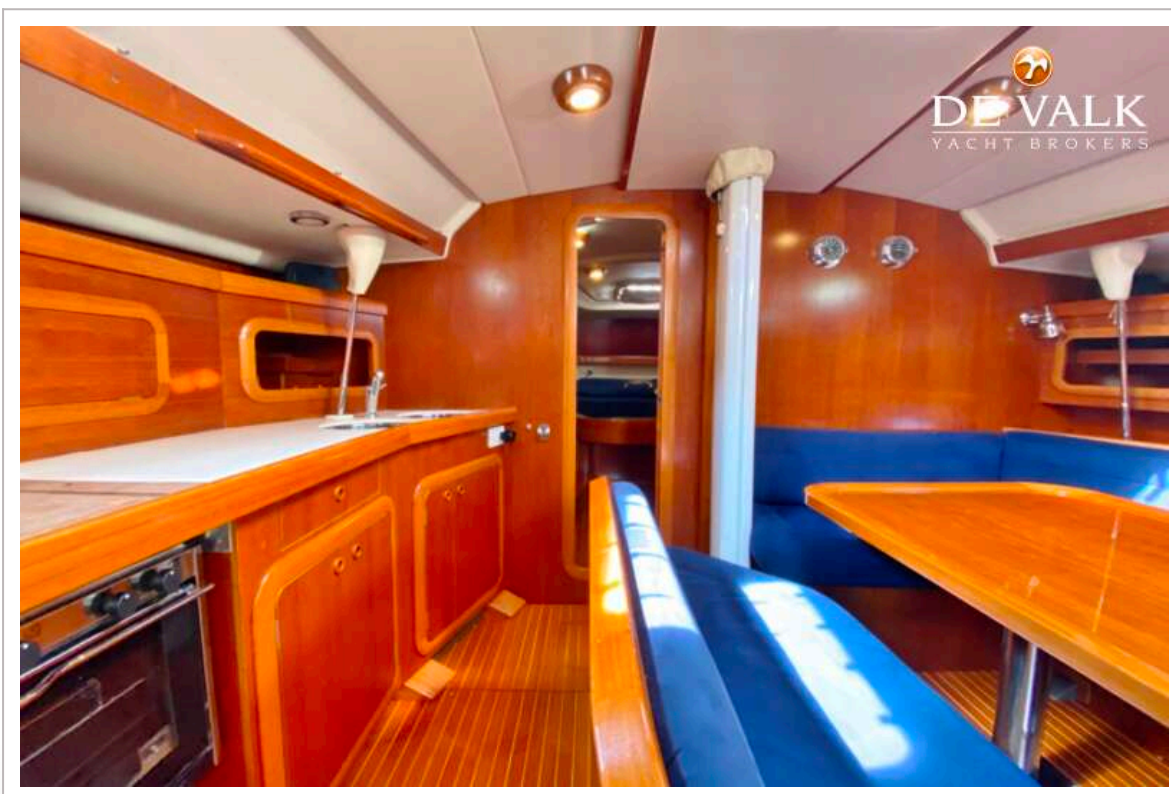
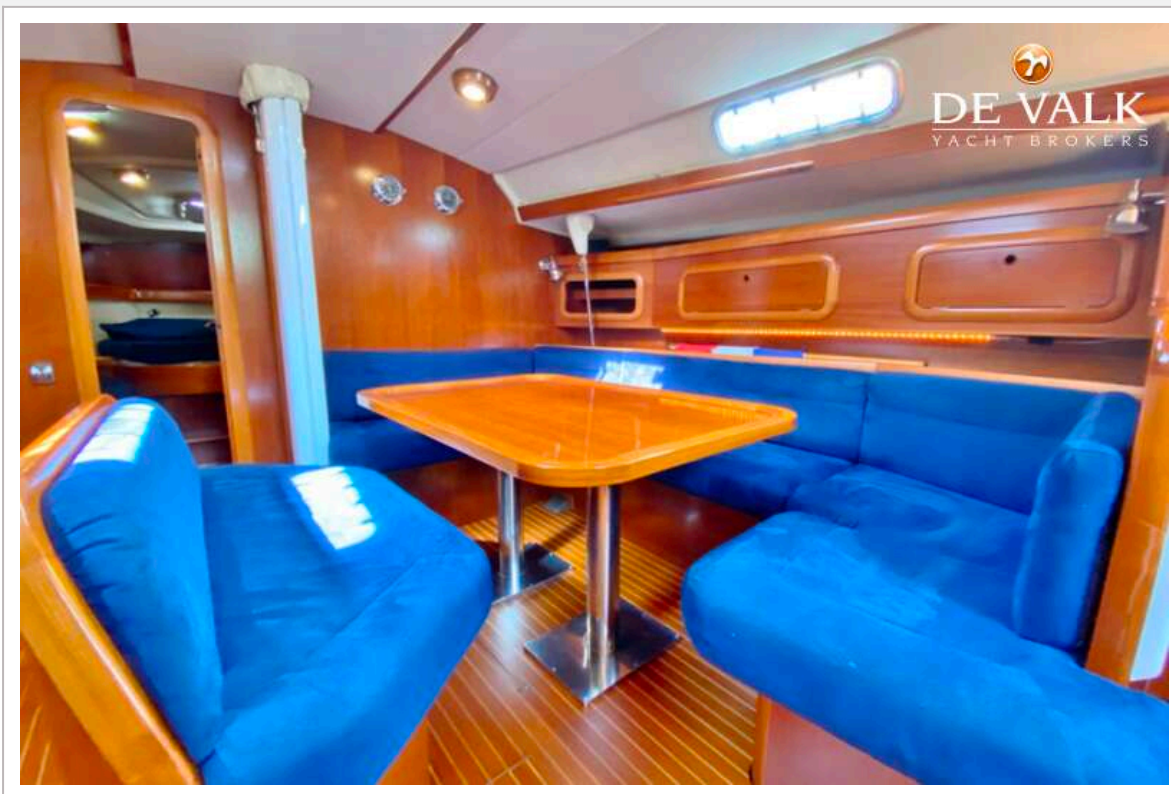
GRAND SOLEIL 46.3



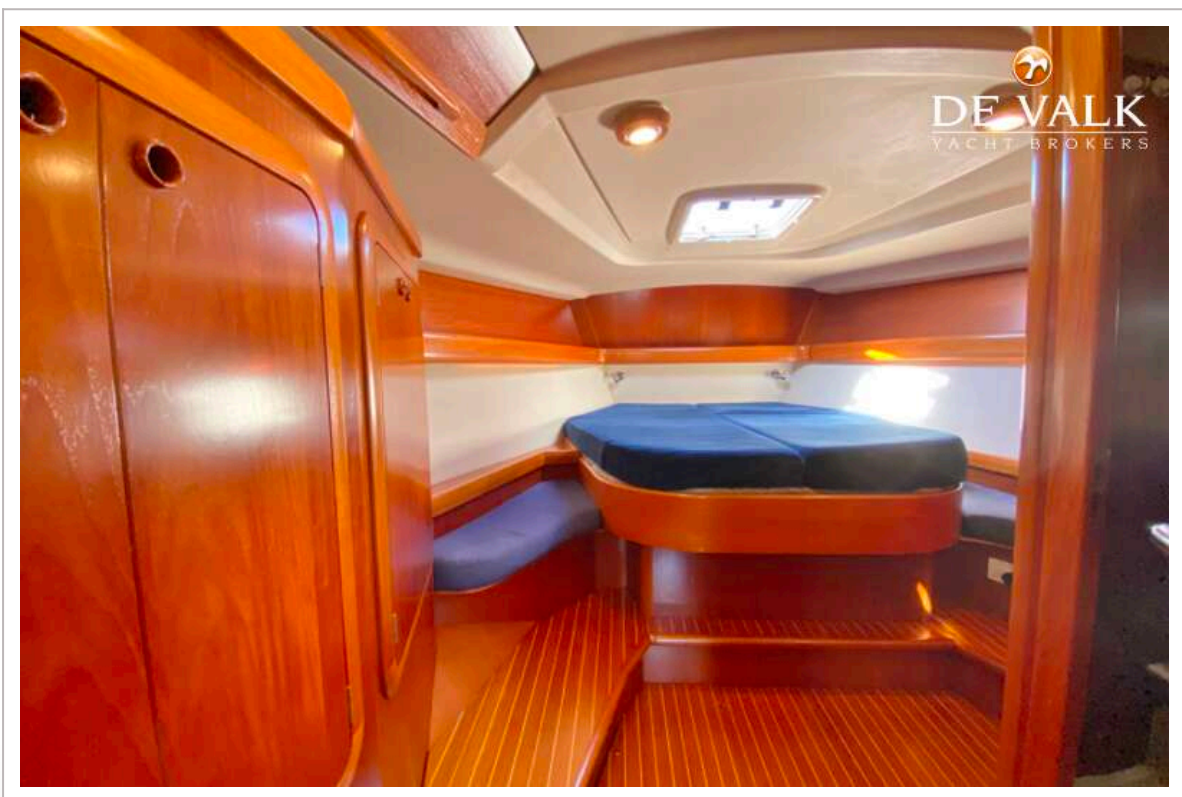
GRAND SOLEIL 46.3



GRAND SOLEIL 46.3



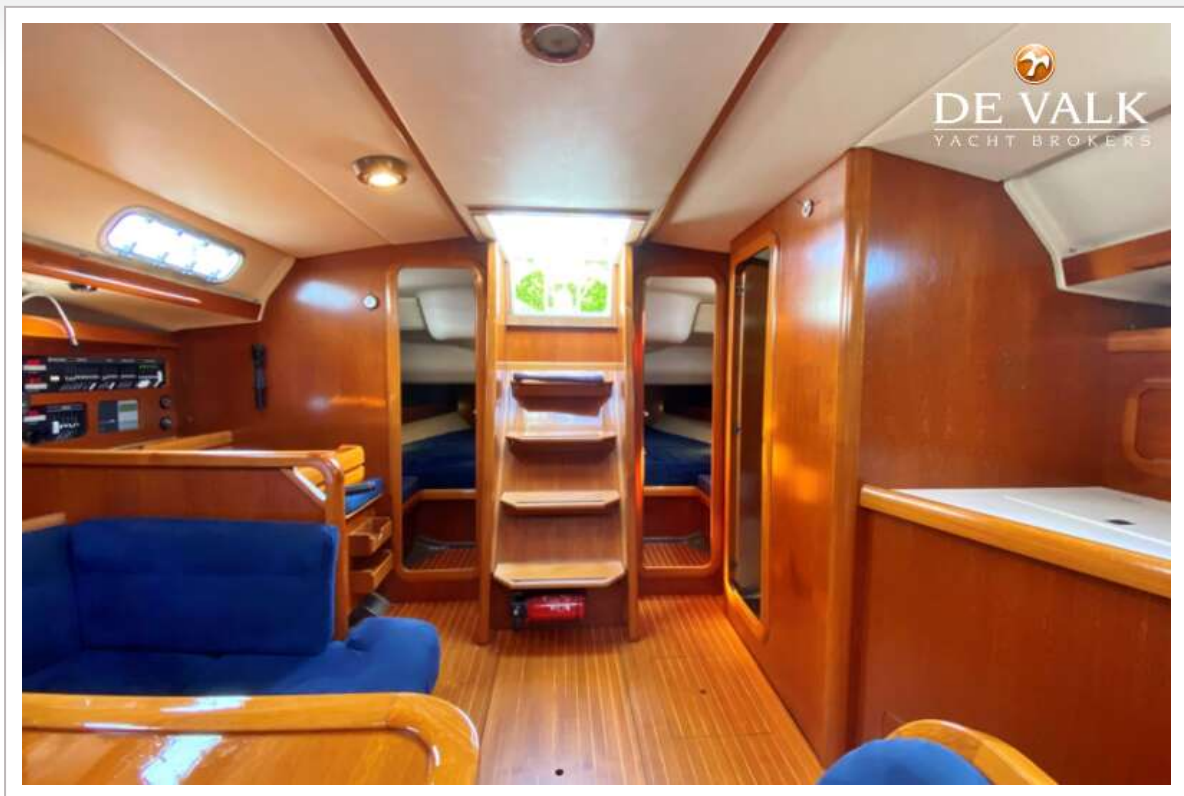
GRAND SOLEIL 46.3



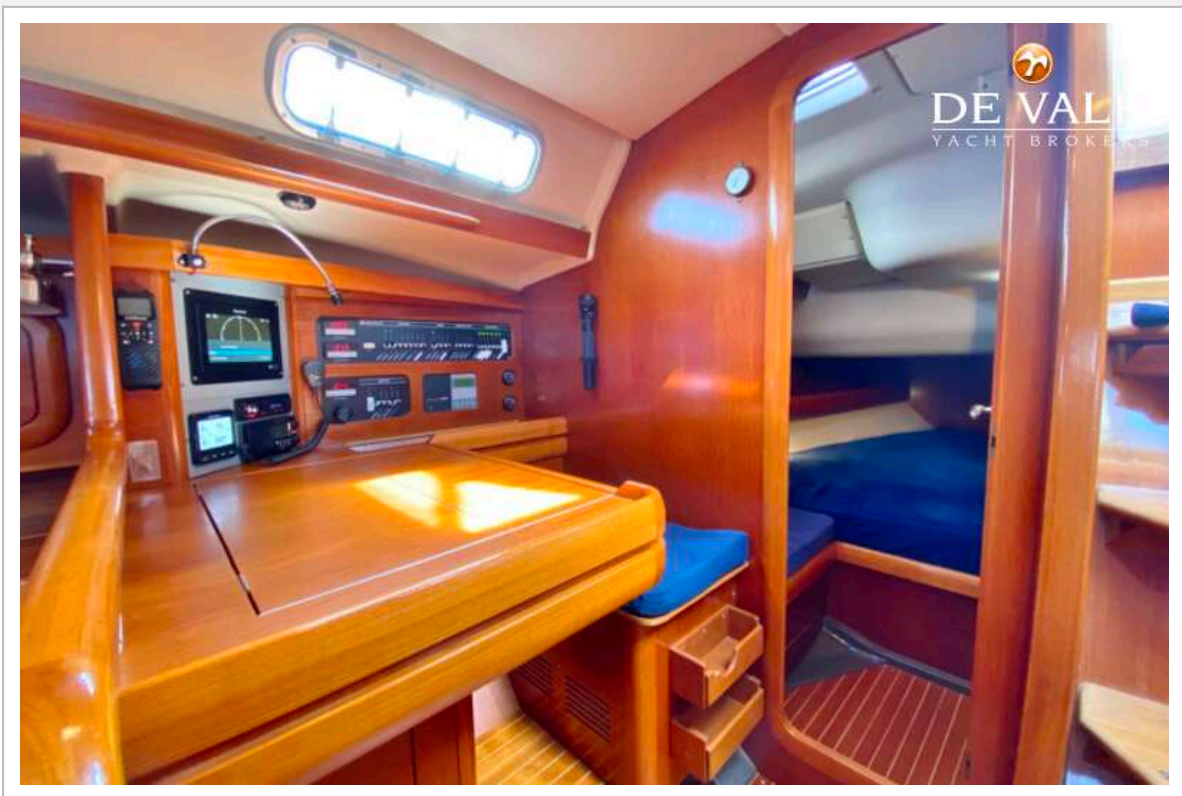
GRAND SOLEIL 46.3



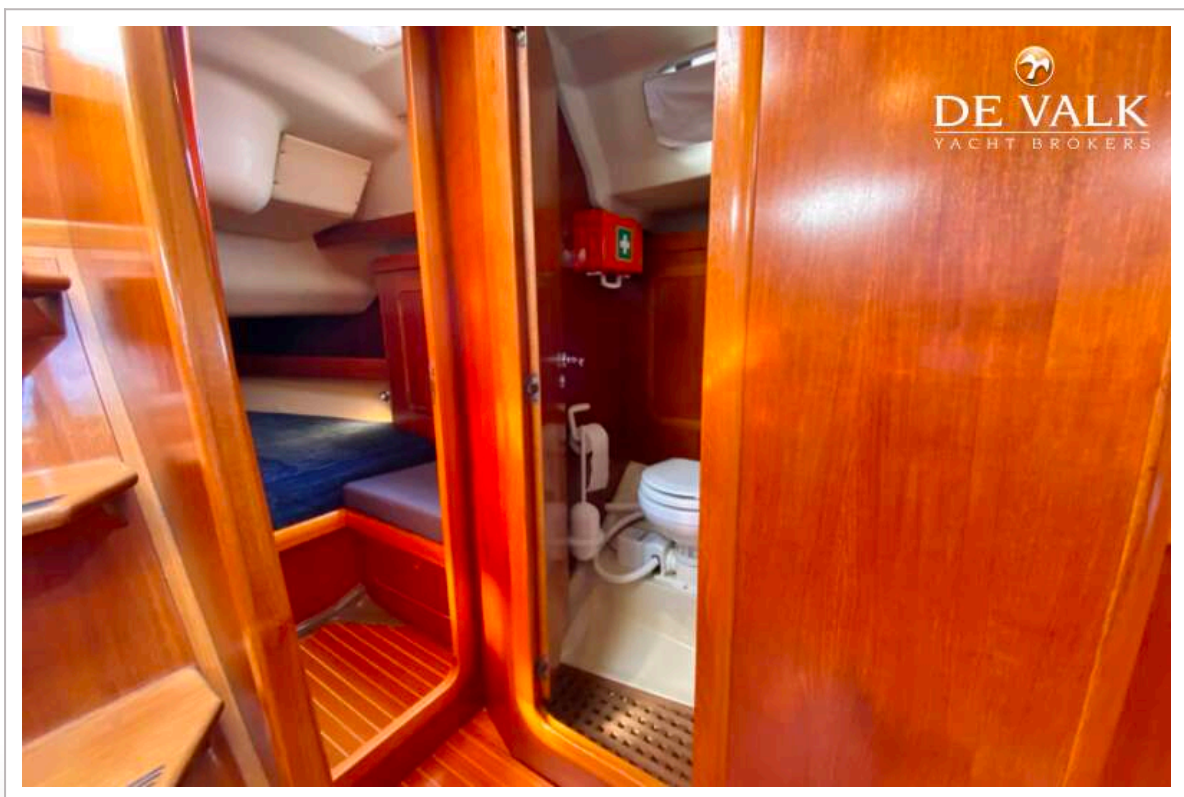
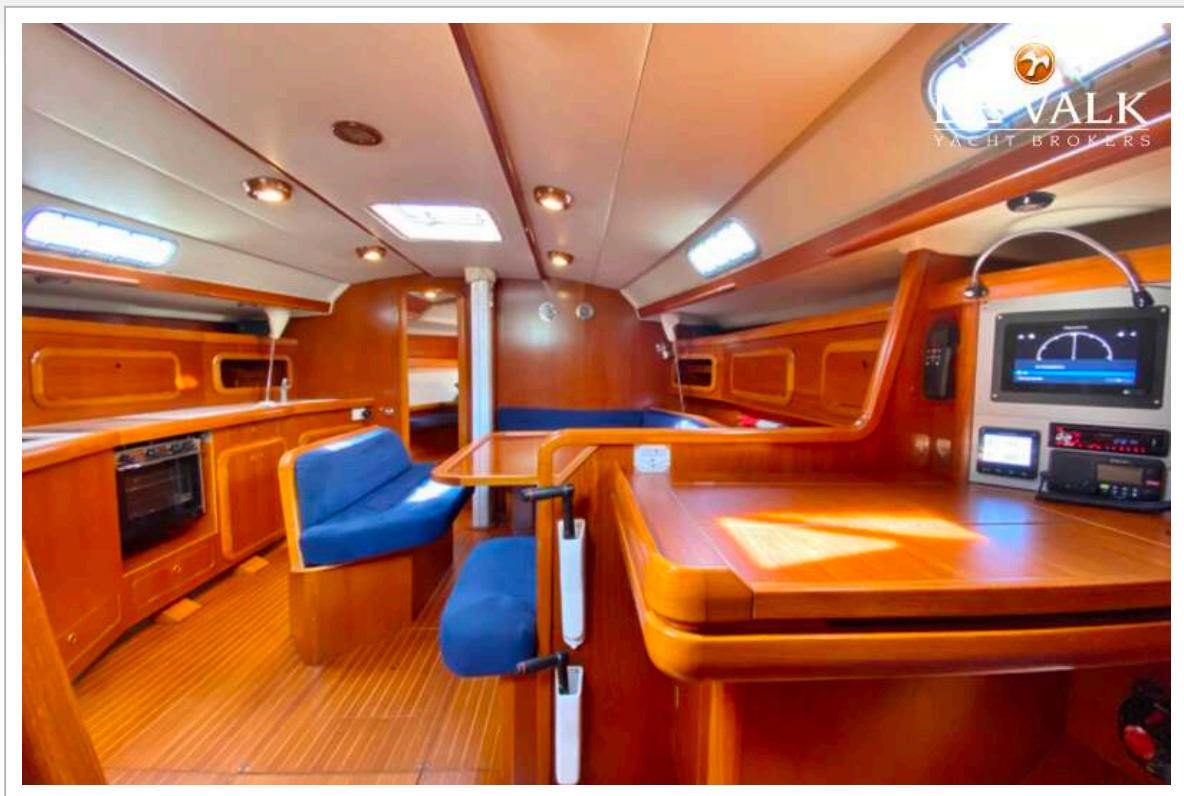
GRAND SOLEIL 46.3



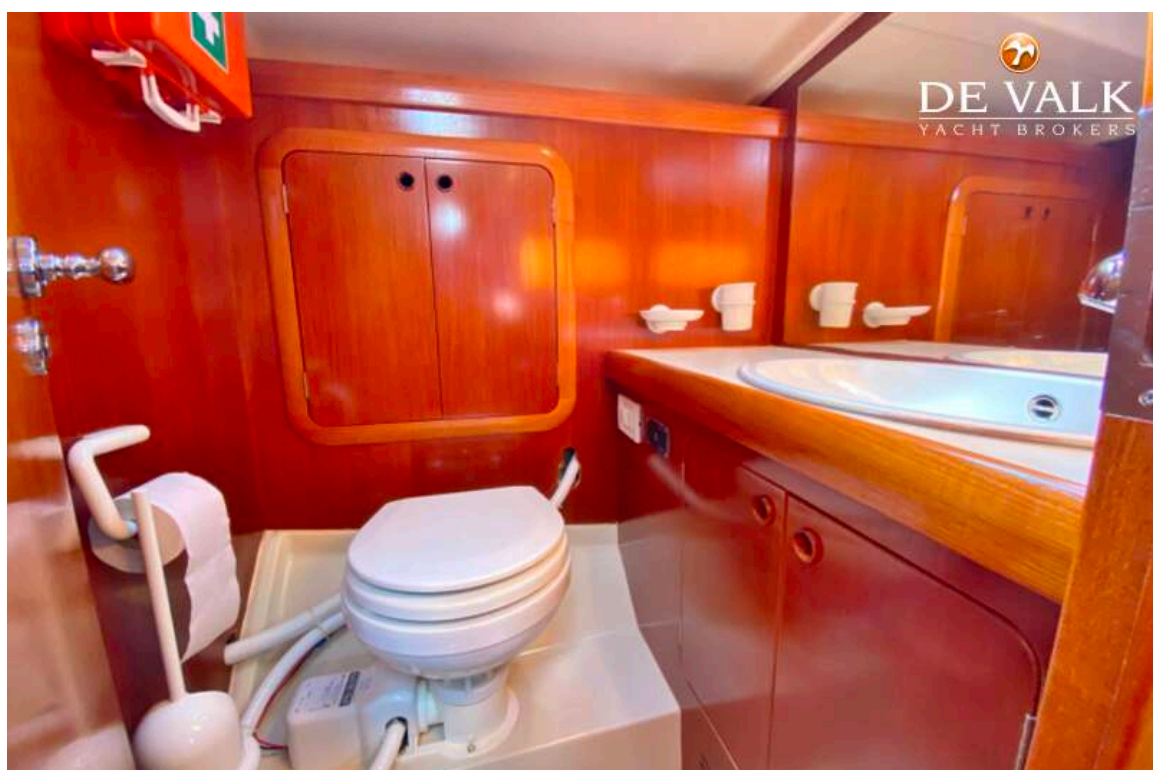
GRAND SOLEIL 46.3



GRAND SOLEIL 46.3



GRAND SOLEIL 46.3



GRAND SOLEIL 46.3

