



BESTEVAER 49 ST

BESTEVAER 49 ST

BROKER'S COMMENTS

Another rare opportunity to own one of the best tough sailing yachts in the world on short notice. This immaculate, hardly used 2014 Bestevaer 49ST is one of the favourite models built by KM Yachtbuilders. This beautiful, complete, modern Bestevaer 49ST " Mate " is clearly the little sister of the "Bestevaer II", from the famous designer Gerard Dijkstra has built for his own use. The sailing characteristics are excellent and, also due to the presence of the pilot house, make this boat a very comfortable boat for long trips. Now ready to be admired and inspected.

Johan Nooitgedagt

SPECIFICATIONS

Dimensions	14.97 x 4.40 x 2.10 (m)	Builder	KM Yachtbuilders
Built	2014	Cabins	2
Material	Aluminium	Berths	5
Engine(s)	1 x Yanmar 4JH4 TE75 diesel	Hp/Kw	75.00 (hp), 55.13 (kw)
Asking price	sold (VAT)	Lying	contact Hindeloopen

CONTACT

Sales office	De Valk Hindeloopen B.V.	Telephone	+31 514 52 40 00
Address	Oosterstrand 1 8713 JS Hindeloopen NL	E-mail	hindeloopen@devalk.nl

DISCLAIMER

These particulars are given in good faith as supplied but cannot be guaranteed.



GENERAL

Model	BESTEVAER 49 ST
Type	sailing yacht
LOA (m)	14,97
LWL (m)	13,72
Beam (m)	4,40
Draft (m)	2,10
Air draft (m)	23,00
Headroom (m)	1,95
Year built	2014
Builder	KM Yachtbuilders
Country	The Netherlands
Designer	Dykstra Naval Architects
Displacement (t)	17
Ballast (tonnes)	lead 5.5
CE norm	A
Hull material	aluminium
Hull colour	Unpainted aluminium hull
Hull shape	round-bilged
Keel type	fin keel
Superstructure material	aluminium
Rubbing strake	aluminum
Deck finish	Anti Skid on deck
Antifouling (year)	2020
Dorades	yes
Deckhatch	yes
Fuel tank (litre)	aluminium 2 x 400
Level indicator (fuel tank)	yes
Freshwater tank (litre)	aluminium 2 x 320
Blackwater tank (litre)	aluminium 1 x 50
Outside helm position	



Tiller	JEFA aluminium tiller direct connected to rudder.
ACCOMMODATION	
Cabins	2
Berths	5
Interior	mahogany Classic styling with mahogany and white paneling
Layout	yes
Floor	Oak wood
Pilot house	yes
Headroom saloon (m)	2,10
Heating	stove diesel Refo Scandia heater, 8kw diesel with chimney in saloon
Chart table	yes
Aft Cabin	yes
Galley	yes
Countertop	corian
Sink	stainless steel
Cooker	calor gas Force 10 Top burner, 3 pits plus oven (30l)
Oven	yes
Fridge	40L
Hot water system	Quick boiler 40L 220V/800W stainless steel
Water pressure system	electrical And manual
Owners cabin	double bed
Guest cabin 1	double bed
Extra info	All lights are LED, 2x6 kg propane gas bottles, gas switch, electric and manual

MACHINERY

No of engines	1
Make	Yanmar
Type	4JH4 TE75



BESTEVAER 49 ST

HP	75
kW	55,13
Fuel	diesel
Year installed	2015
Maximum speed (kn)	8
Cruising speed (kn)	7
Consumption (l/hr)	3,5
Engine hours	220
Engine cooling system	freshwater heat exchanger
Drive	shaft
Engine controls	bowden cable
Gearbox	mechanical
Bowthruster	electric Sidepower
Propeller type	fixed
Propeller blades	3 blade Gori propellor
Propeller shaft material	stainless steel
Shaft lubrication	water
Manual bilge pump	2x
Electric bilge pump	Yes
Electrical installation	yes
Start battery	Optima 12V 66Ah, maintenance free
Service battery	3x Gel Victron 12V 220 Ah, deepcycle
Bowthruster battery	yes
Battery monitor	Victron BMV 602S
Battery charger	yes
Battery charger/inverter	Victron Multiplus 12V/3000VA/120A
Wind generator	Superwind (350W 12V) not mounted but onboard
Shorepower	with cable
Extra info	1x Alternator main engine 110Ah and 1x 120Ah at 2000rpm

NAVIGATION



Compass	yes
Depth sounder	Simrad IS 40
Depth sounder/log	Simrad IS 40
Log	Simrad IS 40
Windset	Simrad IS 40
Repeater	Simrad NSE 12
VHF	Simrad RS 82
Autopilot	Simrad AP 28 with Simrad HLD-2000 Mk2S autopilot drive unit
Wind vane steering install.	Windpilot
Radar	Simrad Broadband 4G
Radar/GPS/plotter	Simrad NSE 12 multifunctional display
Navtex	Furuno NX-300D dual receiver
AIS receiver	yes
AIS transponder	Simrad NAIS-400 system Class B AIS with GPS antenna
EPIRB	Yes

EQUIPMENT

Fixed windscreen	yes
Cockpit cushions	yes
Boarding ladder	aluminum
Deck shower	Hot and cold water
Anchor	Delta Anchor 32kg/70lbs
Anchor chain	10mm 70m anchor chain plus stopper
Anchor 2	Fortress 35kg with led-line
Windlass	electrical Lewmar
Dinghy	AB 9UL Lammina
Outboard	Yamaha
Outboard support	Stainless steel
Davits	stainless steel Retractable davits
Davits controls	manual
Sea railing	stainless steel Wire on stainless steel Stanchions



Railing side opening gates	yes
Pushpit	Stainless steel
Pulpit	Stainless steel
Life raft	container Safeguard HYF U6
Life raft (pers)	6
Radar reflector	On mast (Echomax)
Fenders	yes
Mooring lines	Huge amount of ropes/landlines
Spare parts	yes
Radio-cd player	Pioneer
Cockpit speakers	yes
Speakers in salon	yes
Clock - barometer	Wempe
Fire extinguisher	2x fireblanket 3x fire extinguisher

RIGGING

Rigging	sloop-cutter
Standing rigging	wire
Brand mast	Seldén Fractional tapered at top
Material mast	aluminium
Spreaders	yes
Mainsail	65.5m2 Dacron Fibercon pro 10.49 oz
Mainsail cover	yes
Battcars	yes
Fully battened mainsail	yes
Genoa furler	Yankee furler (Furlex)
Staysail	24m2 Dacron Fibercon pro 10.46 oz
Staysail furler	Furlex
Yankee	49m2 Dacron Fibercon pro 10.49 oz
Reefing System	quick-one-line-reefing
Backstay adjuster	mechanical



BESTEVAER 49 ST

Boomvang

gasspring

Genoa sheetwinches

2x electric winches Lewmar 65 EST

Multifunctional winches

2x manual winches Lewmar 55 ST

Gennaker pole

aluminium Retractable bowsprit

Extra info

flake rack on boom, retractable bowsprit, all deck gear Lewmar



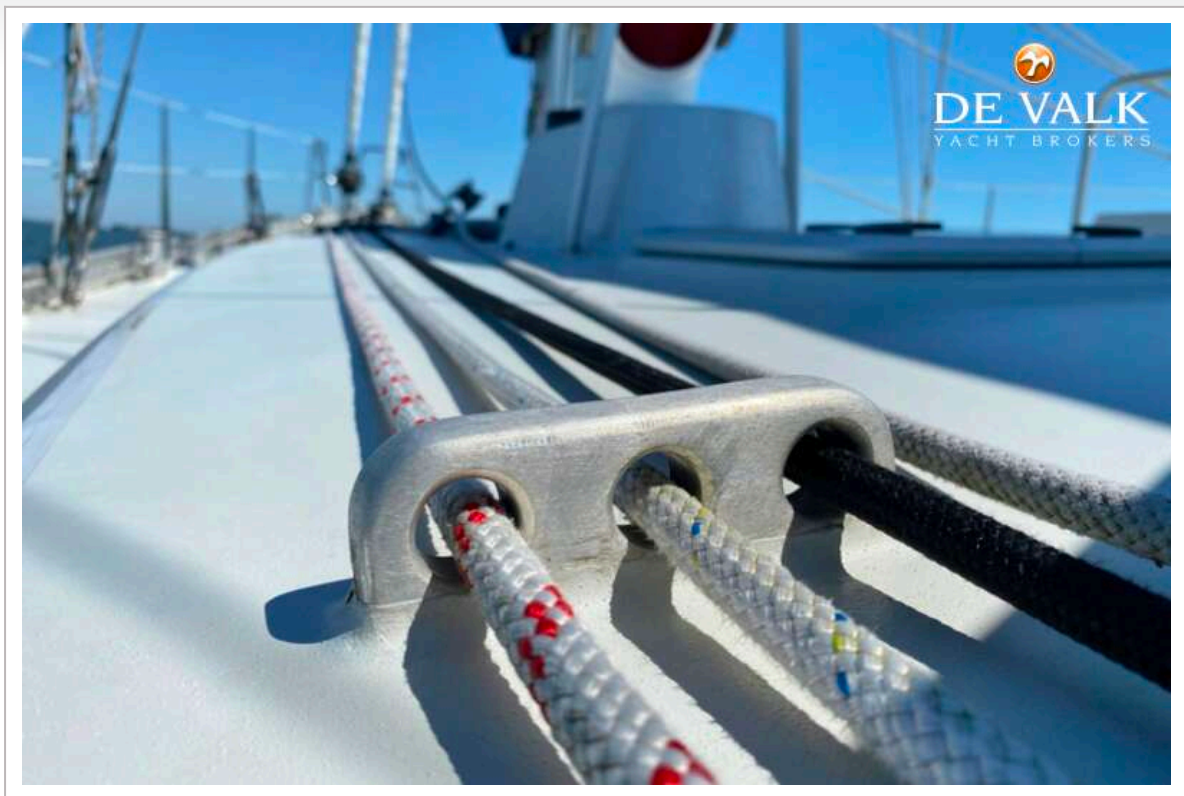
BESTEVAER 49 ST



BESTEVAER 49 ST



BESTEVAER 49 ST



BESTEVAER 49 ST



BESTEVAER 49 ST



BESTEVAER 49 ST



BESTEVAER 49 ST



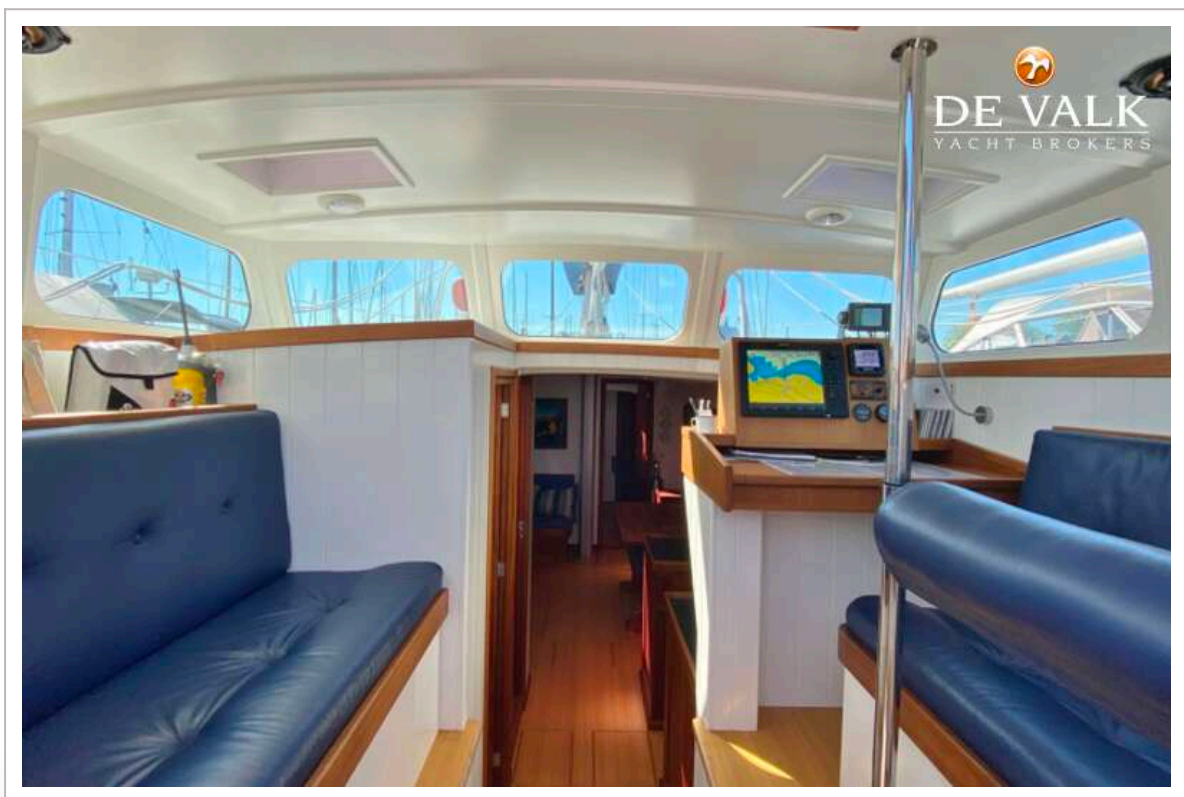
BESTEVAER 49 ST



BESTEVAER 49 ST

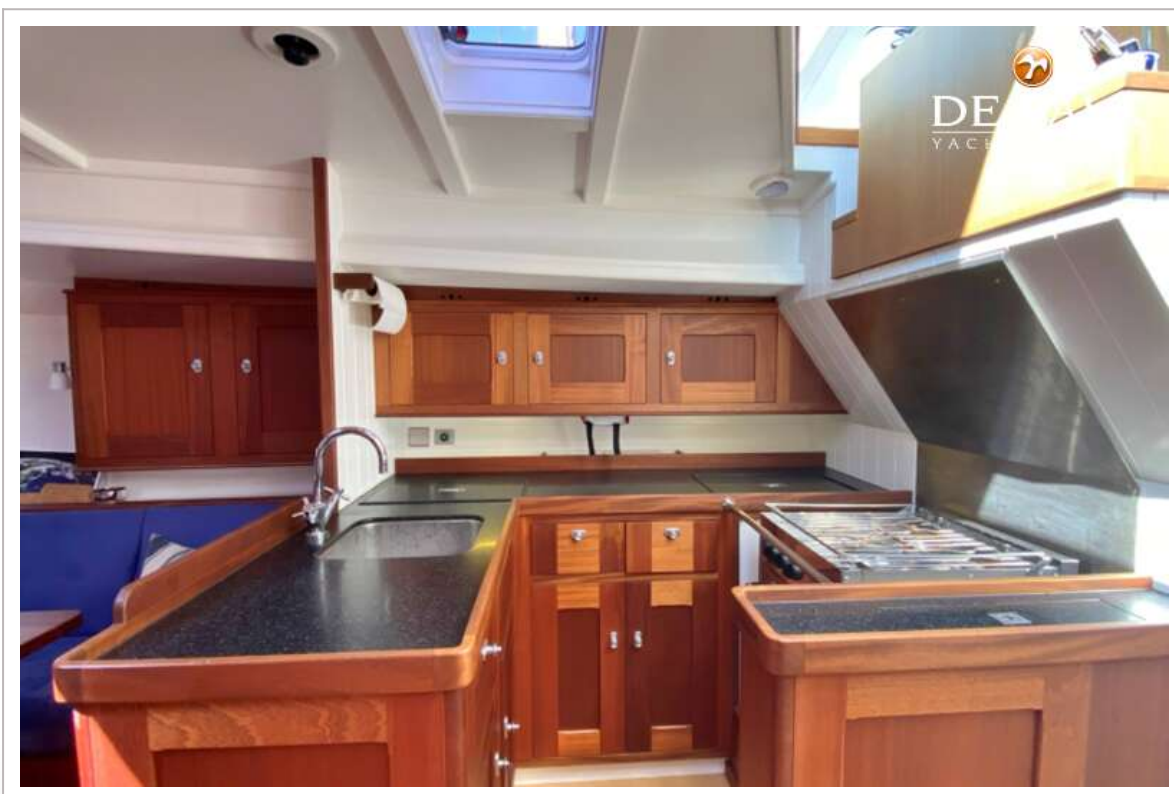
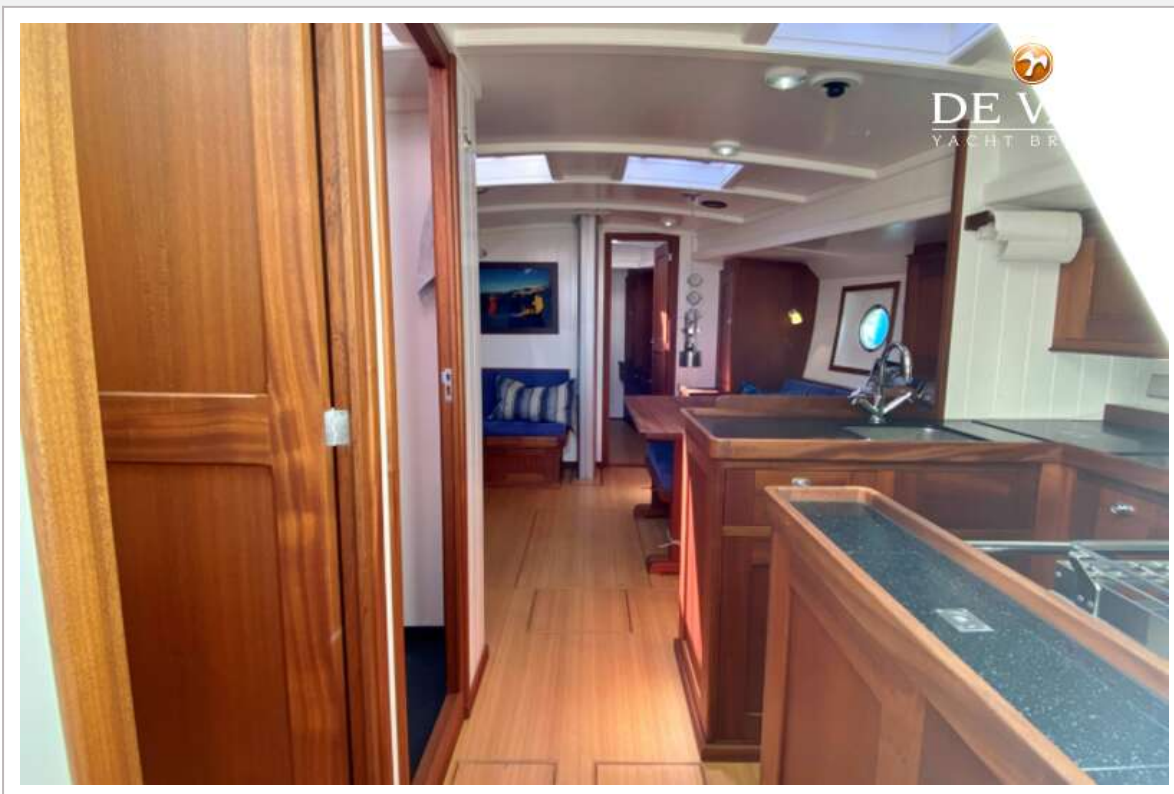


BESTEVAER 49 ST





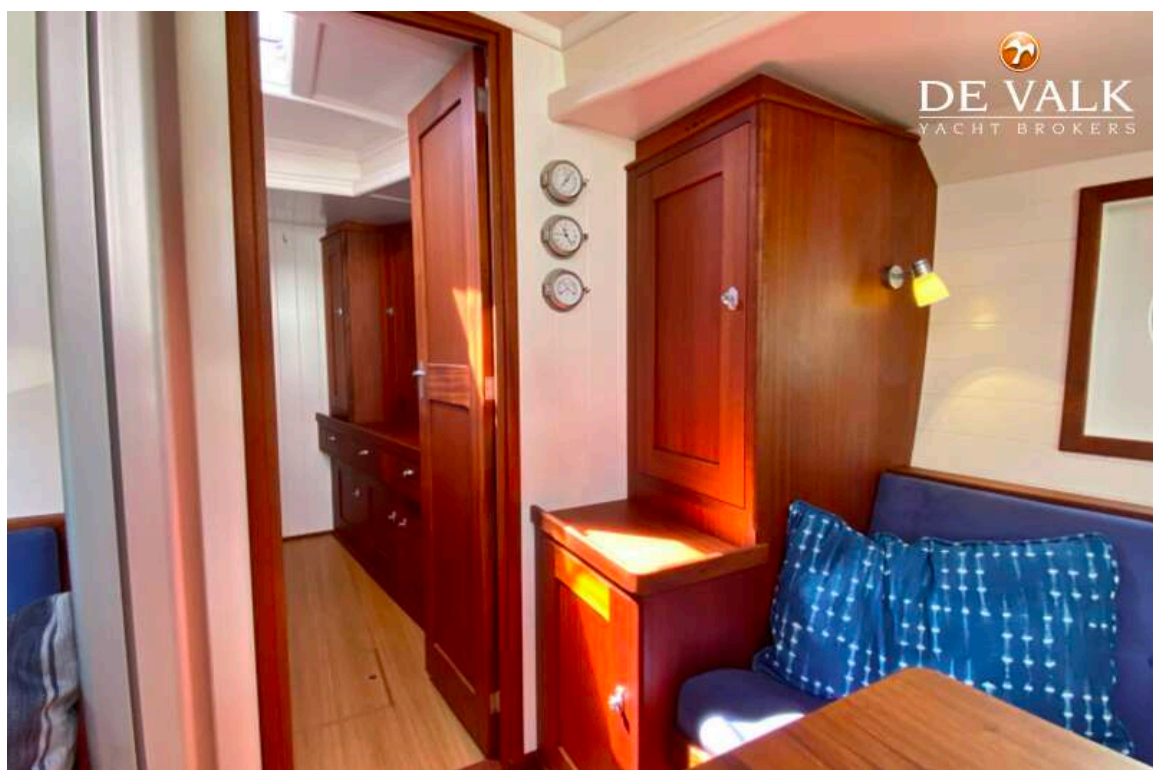
BESTEVAER 49 ST

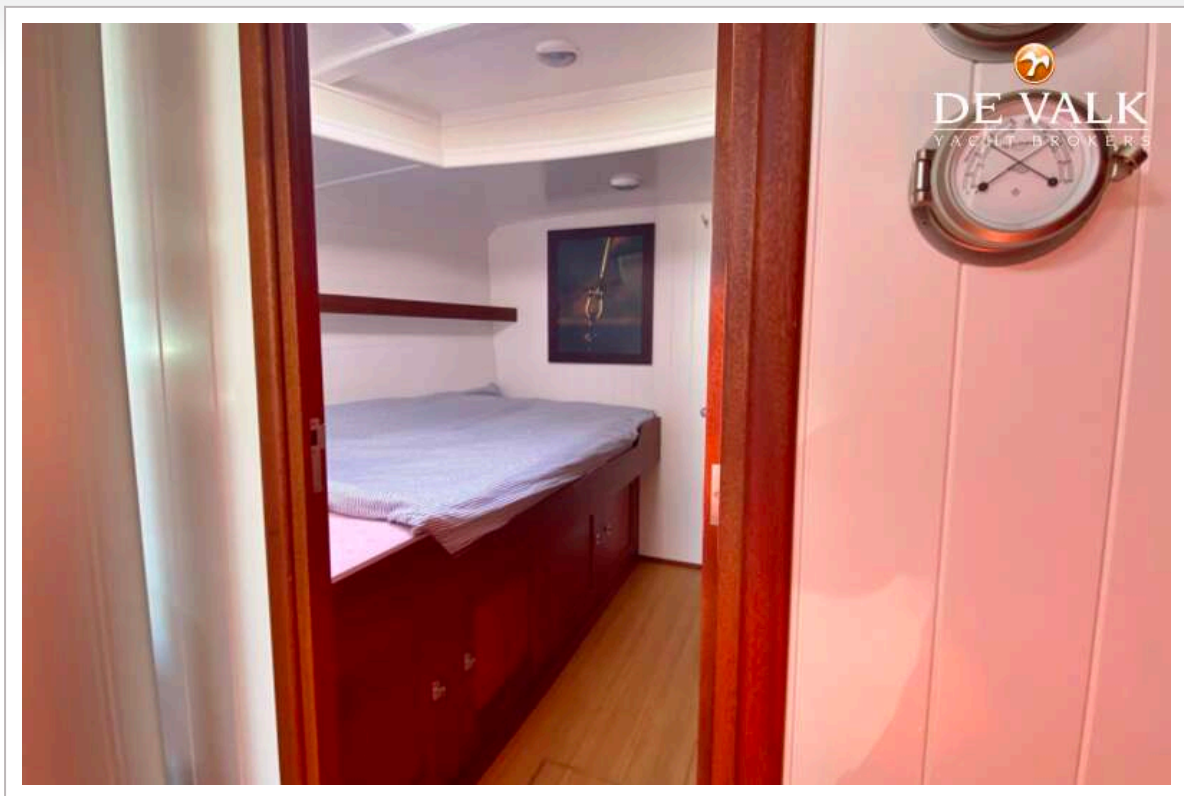


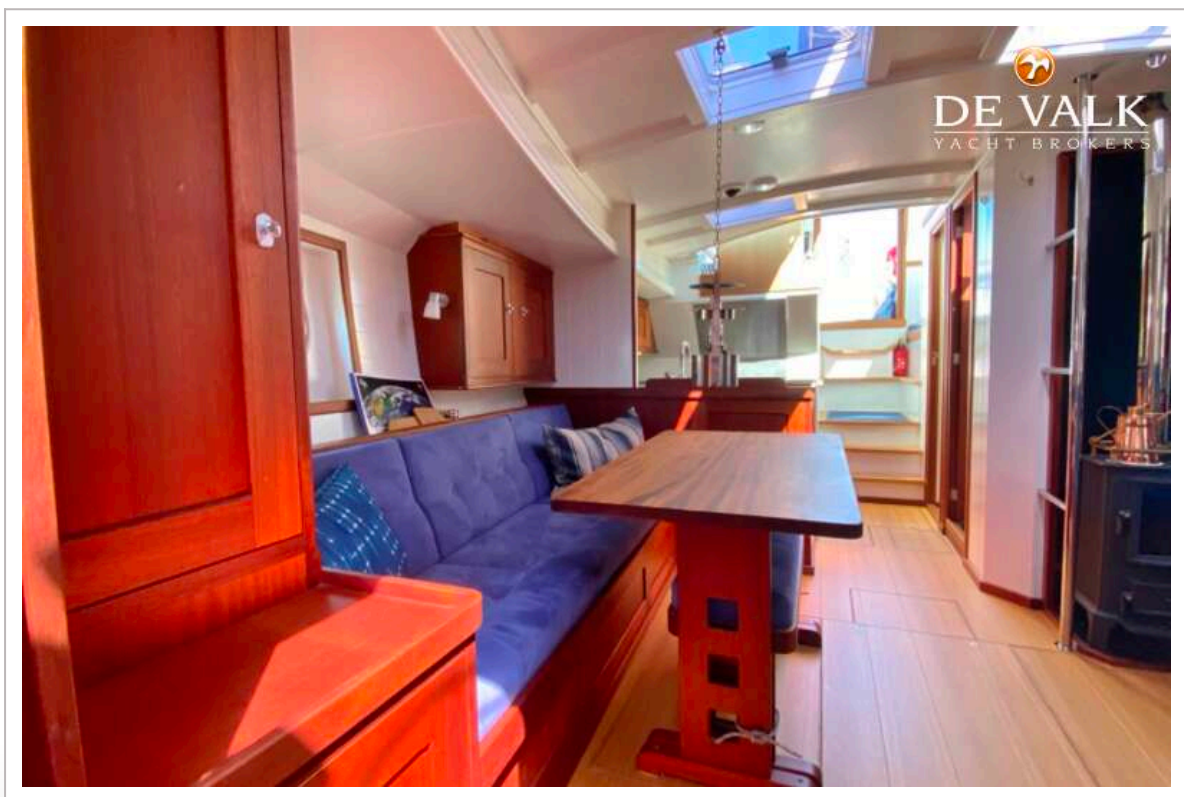
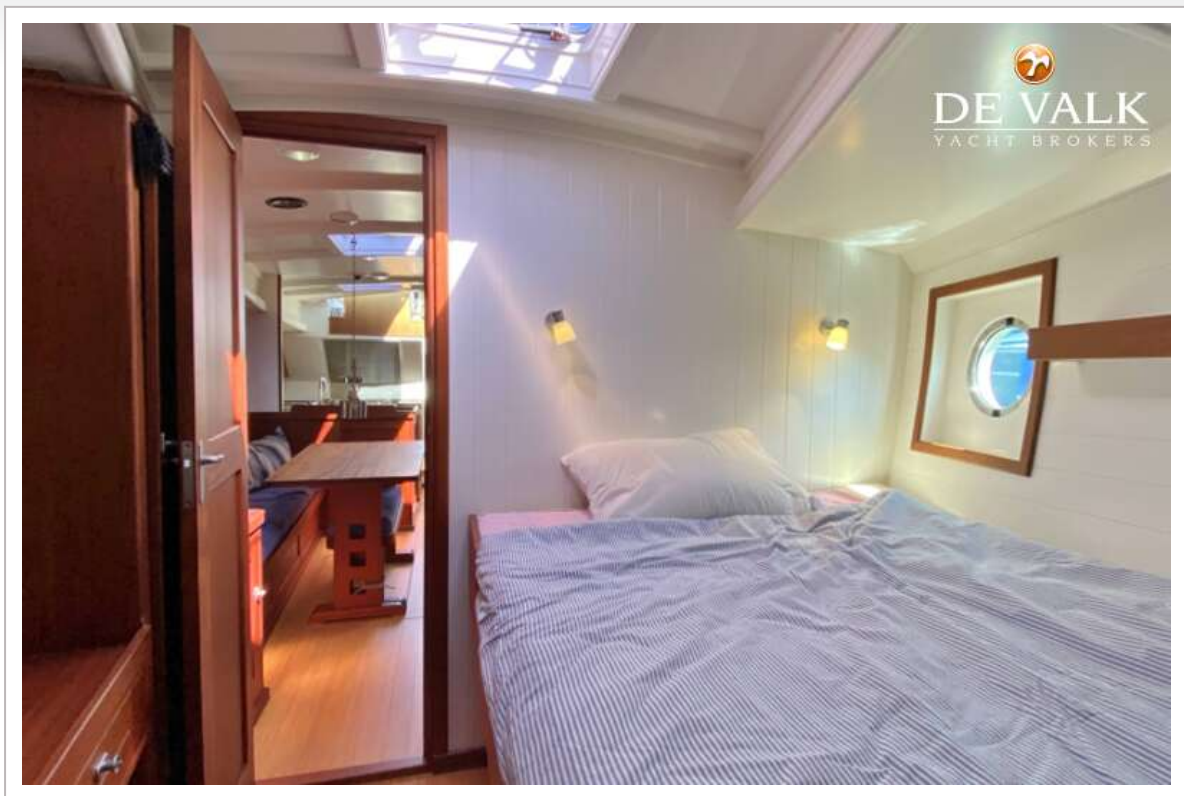
BESTEVAER 49 ST



BESTEVAER 49 ST







BESTEVAER 49 ST

