



GLACER 40

BROKER'S COMMENTS

This Glacier 40 is a unique yacht model with a retractable keel, which is a standout feature for sailors looking for versatile draft options ideal for shallow waters. This design allows for ease in both cruising and exploring coastal or shallow regions without sacrificing performance in deeper waters. This combination of a retractable keel and a stainless steel superstructure suggests the Glacier 40 is designed for both style and function.

Stein Dubbeldam

SPECIFICATIONS

Dimensions	12.00 x 3.80 x 2,20 / 1.10 (m)	Builder	CB Yachtbau
Built	1995	Cabins	3
Material	Steel	Berths	6
Engine(s)	1 x Ford Lehmann 2712E diesel	Hp/Kw	85.00 (hp), 62.56 (kw)
Asking price	sold (VAT)	Lying	at sales office

CONTACT

Sales office	De Valk Hindeloopen B.V.	Telephone	+31 514 52 40 00
Address	Oosterstrand 1 8713 JS Hindeloopen NL	E-mail	hindeloopen@devalk.nl

DISCLAIMER

These particulars are given in good faith as supplied but cannot be guaranteed.



GENERAL

Model	GLACER 40
Type	sailing yacht
LOA (m)	12,00
Beam (m)	3,80
Draft (m)	1,10
Draft min (m)	2,20
Air draft (m)	17,00
Headroom (m)	1,90
Year built	1995
Builder	CB Yachtbau
Country	Poland
Designer	Horst Glacer
Displacement (t)	15
CE norm	NA
Hull material	steel
Hull colour	blue
Hull thickness (mm)	5mm
Hull shape	round-bilged
Keel type	centreboard Retractable system needs service
Superstructure material	stainless steel
Rubbing strake	stainless steel
Deck material	stainless steel
Deck finish	non-skid paint
Superstructure deck finish	teak
Cockpit deck finish	teak
Antifouling (year)	Hull underwater new system 2023 incl antifoul.
Dorades	2
Window frame	aluminium
Window material	tempered glass
Deckhatch	2 x



Portholes	yes
Insulation	glasswool
Fuel tank (litre)	steel 1200
Level indicator (fuel tank)	yes
Freshwater tank (litre)	stainless steel 800
Level indicator (freshwater)	yes
Blackwater tank (litre)	steel 300
Blackwater tank extraction	pump
Greywater tank (litre)	See black water
Wheel steering	hydraulic
Inside helm position	yes
Outside helm position	hydraulic
Emergency tiller	yes
More info on paintwork	Hull and deck repainted 2023

ACCOMMODATION

Cabins	3
Berths	6
Interior	teak
Layout	yes
Floor	parquet
Pilot house/deck saloon	yes
Headroom saloon (m)	1,90
Heating	calorgas ducted hot air Trumatic needs service
Navigation center	yes
Chart table	yes
Aft Cabin	yes
Galley	L shaped
Countertop	corian
Sink	stainless steel
Cooker	calor gas 3 burner



Oven	yes
Hot water system	220V + engine pressure relief valve needs to be replaced
Water pressure system	electrical
Owners cabin	v-bed
Bed length (m)	2.0
Wardrobe	hanging and shelves
Bathroom	shared
Toilet	shared
Toilet system	electric
Wash basin	in the bathroom
Shower	shared
Guest cabin 1	double bed
Bed length (m)	2.0
Wardrobe	hanging and shelves
Guest cabin 2	single bed
Bed length (m)	2.0
Wardrobe	hanging and shelves

MACHINERY

No of engines	1
Make	Ford Lehmann
Type	2712E
HP	85
kW	62.56
Fuel	diesel
Year installed	1995
Maximum speed (kn)	7
Cruising speed (kn)	6
Consumption (l/hr)	3,5
Engine hours	1353
Engine cooling system	closed keelcooling



Drive	shaft
Shaft seal	Grease
Engine controls	bowden cable
Gearbox	hydraulic
Bowthruster	electric
Exhaust	dry is rusty
Propeller type	fixed
Propeller blades	3
Propeller shaft material	stainless steel
Shaft lubrication	grease
Manual bilge pump	yes
Electrical installation	12 V DC and 220 V AC
Generator	Fischer Panda 4000s.Neo PMS 3,4 KW Fresh water pump defect
Running hours generator	185,7
Batteries	5
Start battery	1
Service battery	2
Bowthruster battery	2
Battery monitor	yes
Battery charger	Studer 6A Mastervolt Chargemaster 24/12-3 Mastervolt 12/25-3
Shorepower	with cable

NAVIGATION

Compass	Plastimo
Depth sounder	Raytheon ST60
Log	Raytheon ST 60 needs service
Windset	Raytheon ST 60 needs new topunit
VHF	Sailor RT 2047
Autopilot	Raytheon ST 6000+ Needs service
GPS	yes



Navigation lights

yes

EQUIPMENT

Sprayhood

2 parts

Cockpit cover

3 parts

Sun awning

yes

Winter cover

yes

Cockpit table

Teak

Bathing platform

Steel

Boarding ladder

stainless steel

Anchor

CQR Plough

Anchor chain

yes

Windlass

electrical Reckmann

Sea railing

stainless steel Solid

Grab rail (superstructure)

yes

Pushpit

yes

Pulpit

yes

Fenders

yes

Mooring lines

yes

Spare parts

Some

Tools

Some

RIGGING

Rigging

sloop

Standing rigging

wire

Brand mast

Reckmann

Material mast

aluminium

Spreaders

2 sets

Mainsail

Kary, dacron, has to be replaced.

Stoway mast

Reckmann Hydraulic

Genoa

Dacron, has to be replaced.



Genoa furler	Reckmann
Gennaker	yes
Stormjib	yes
Reefing System	main in-mast furling
Backstay adjuster	yes
Boomvang	gasspring
Primary sheet winch	2 x Lewmar ST46 2sp
Genoa sheetwinches	2 x Lewmar ST40 2sp
Halyard winches	2 x Lewmar ST on the mast
Multifunctional winches	halyard/sheet winches 2 x Lewmar 16ST
Gennaker pole	aluminium



GLACER 40





GLACER 40



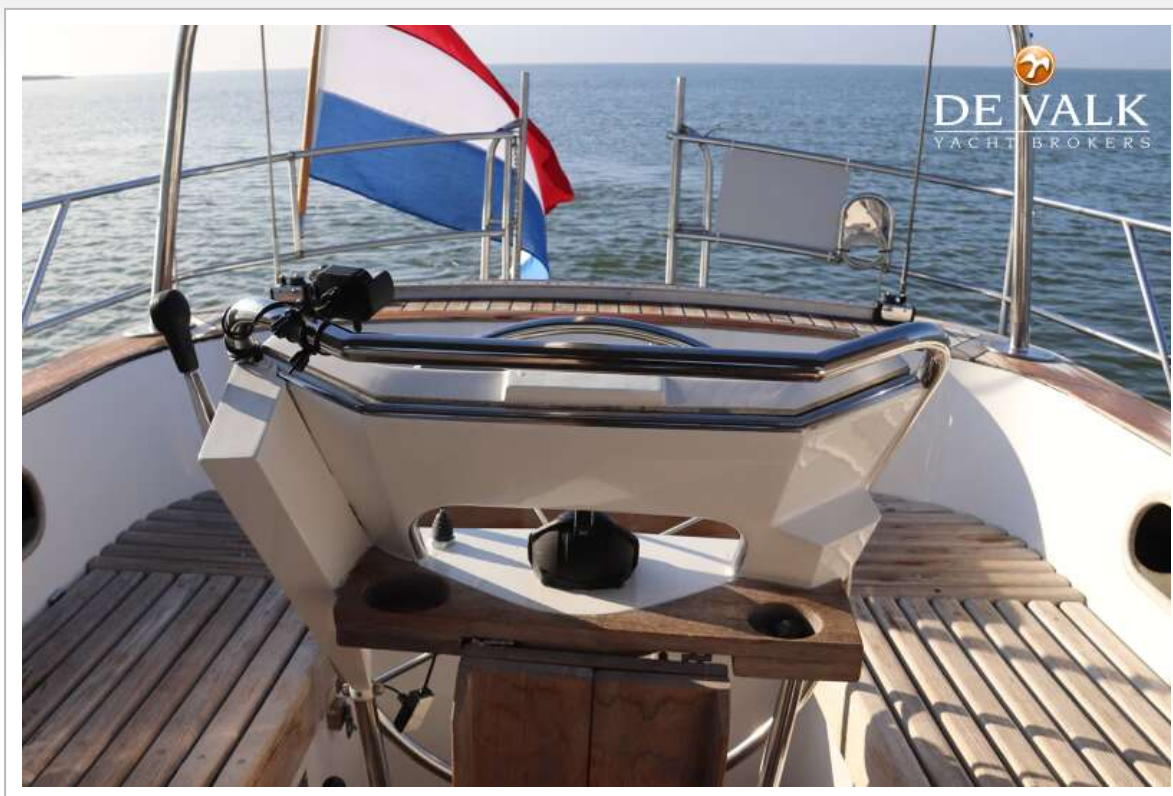
GLACER 40



GLACER 40



GLACER 40



GLACER 40



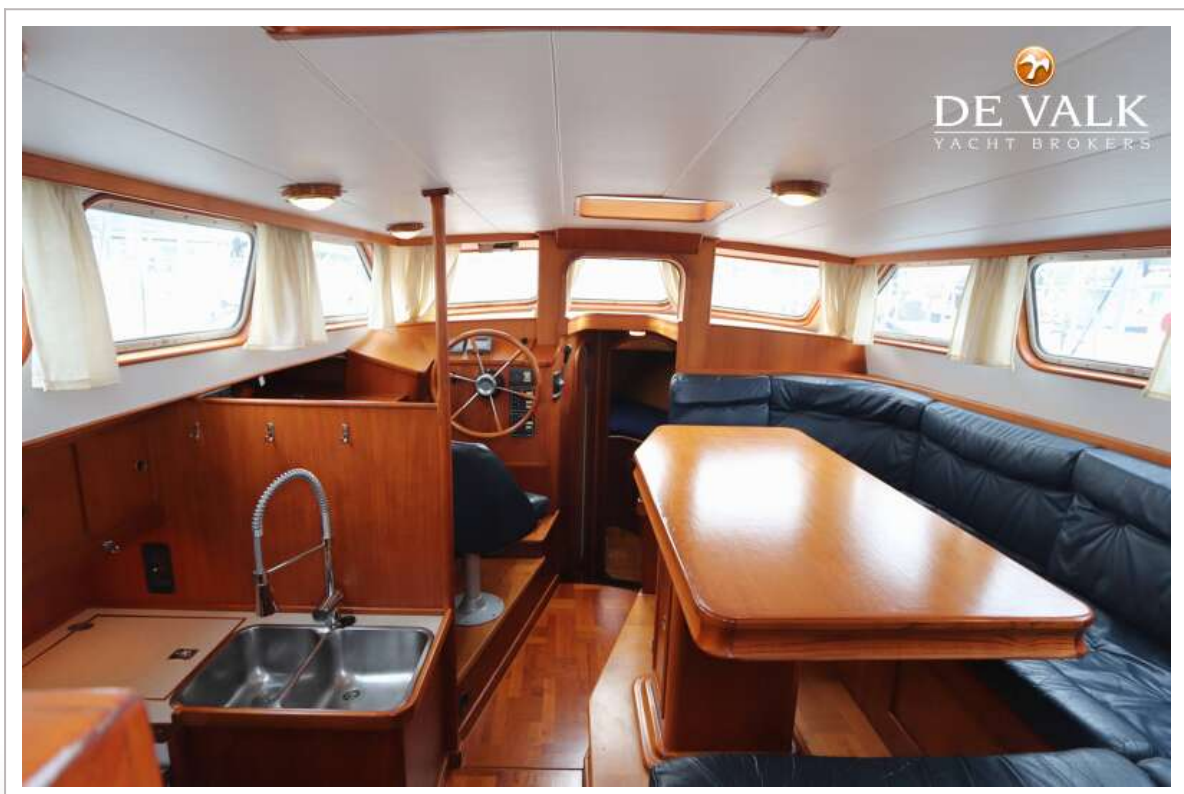
GLACER 40



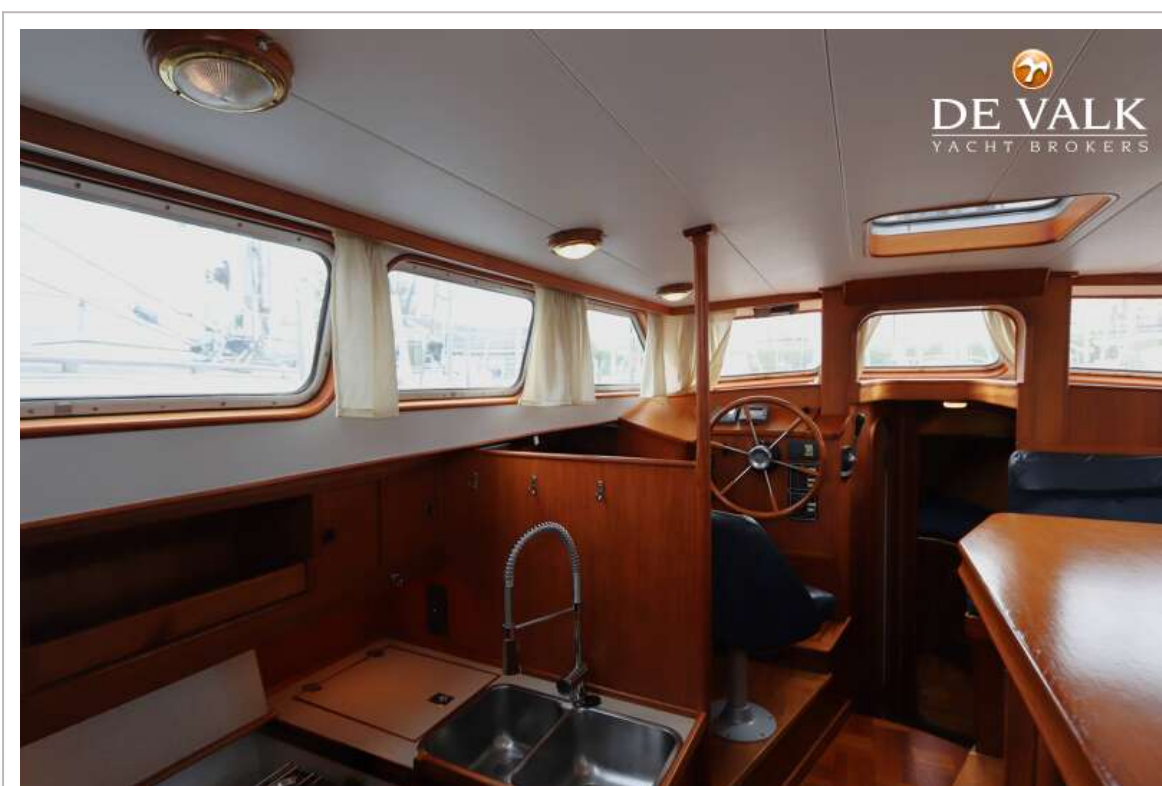
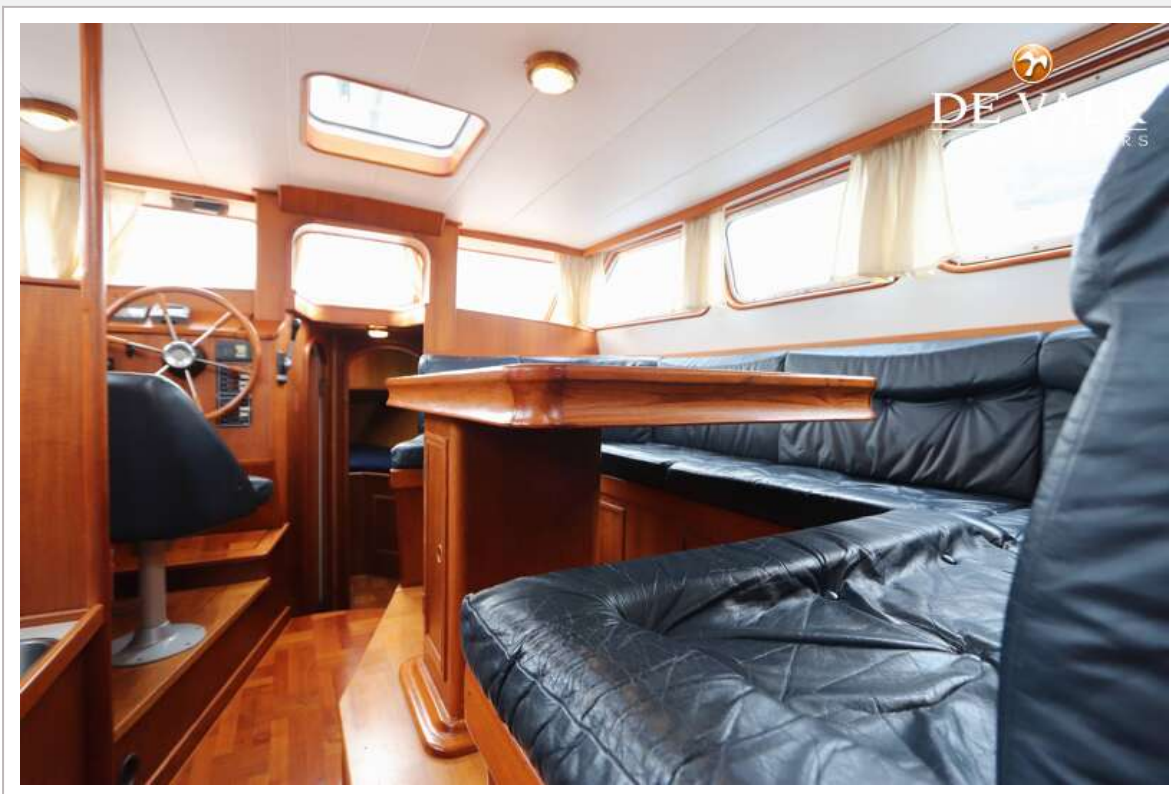
GLACER 40



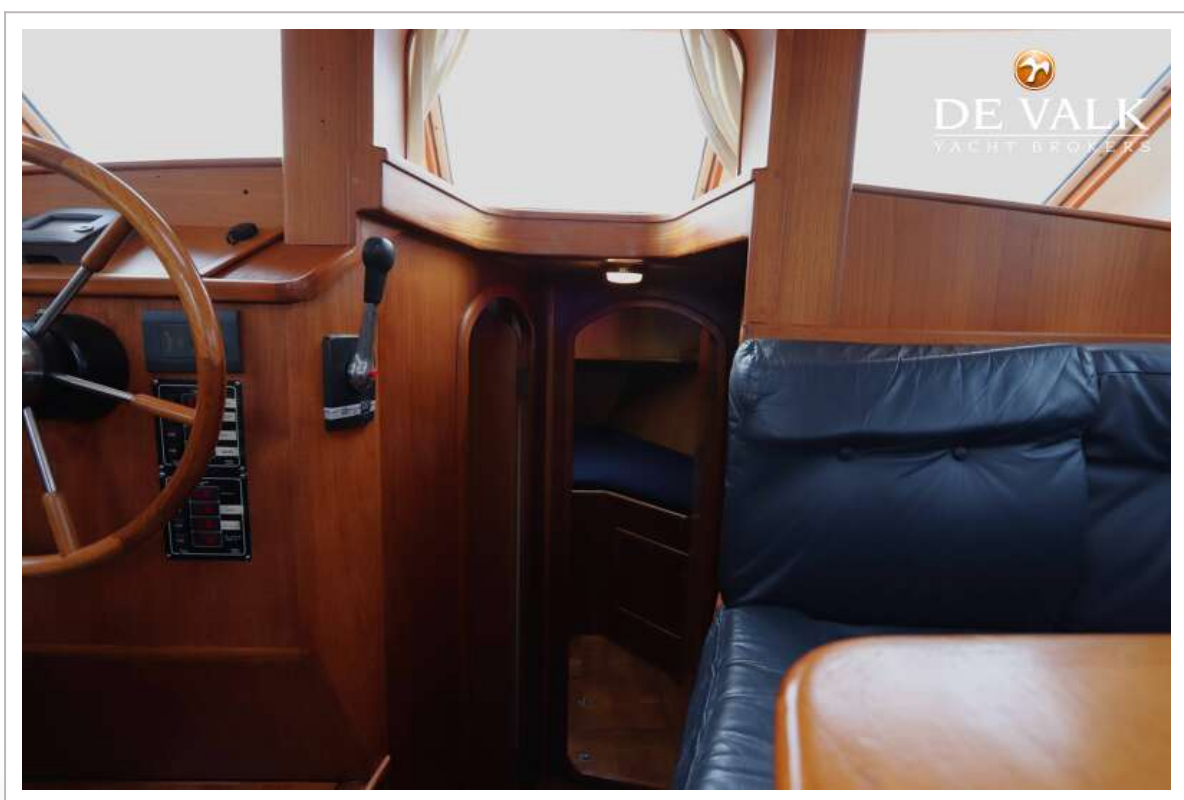
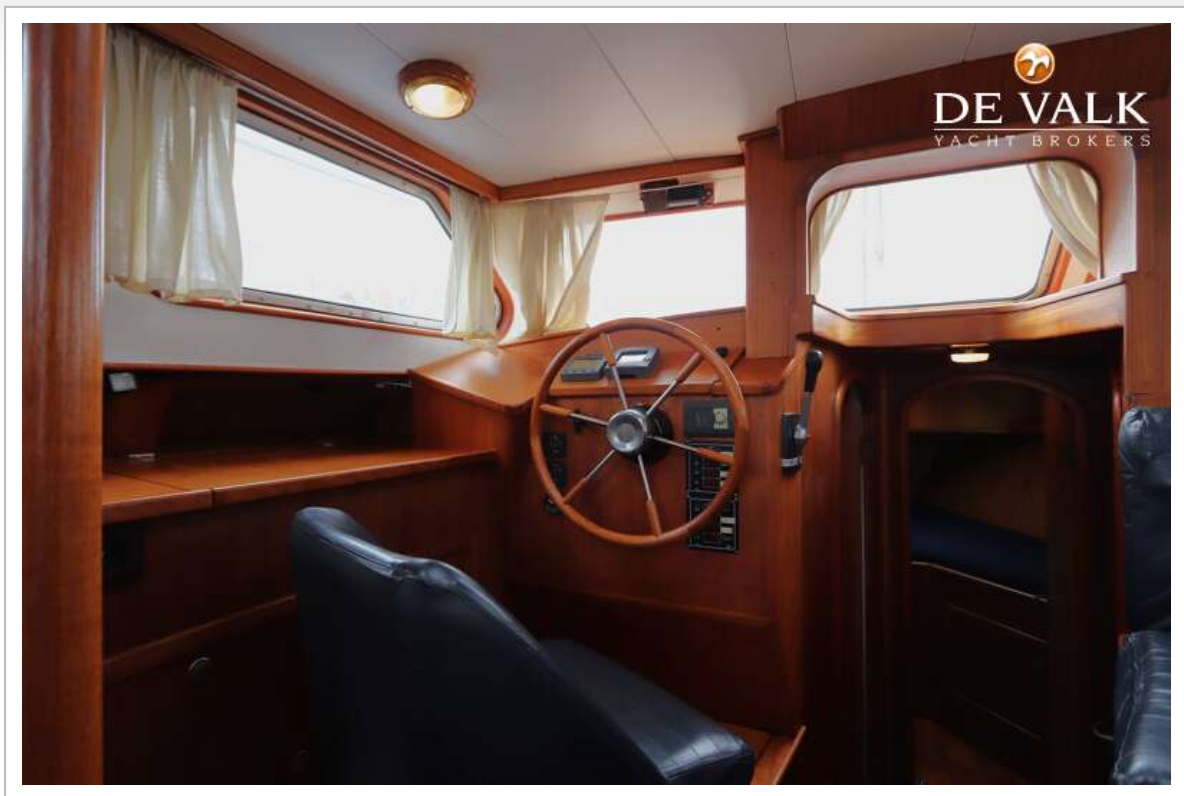
GLACER 40



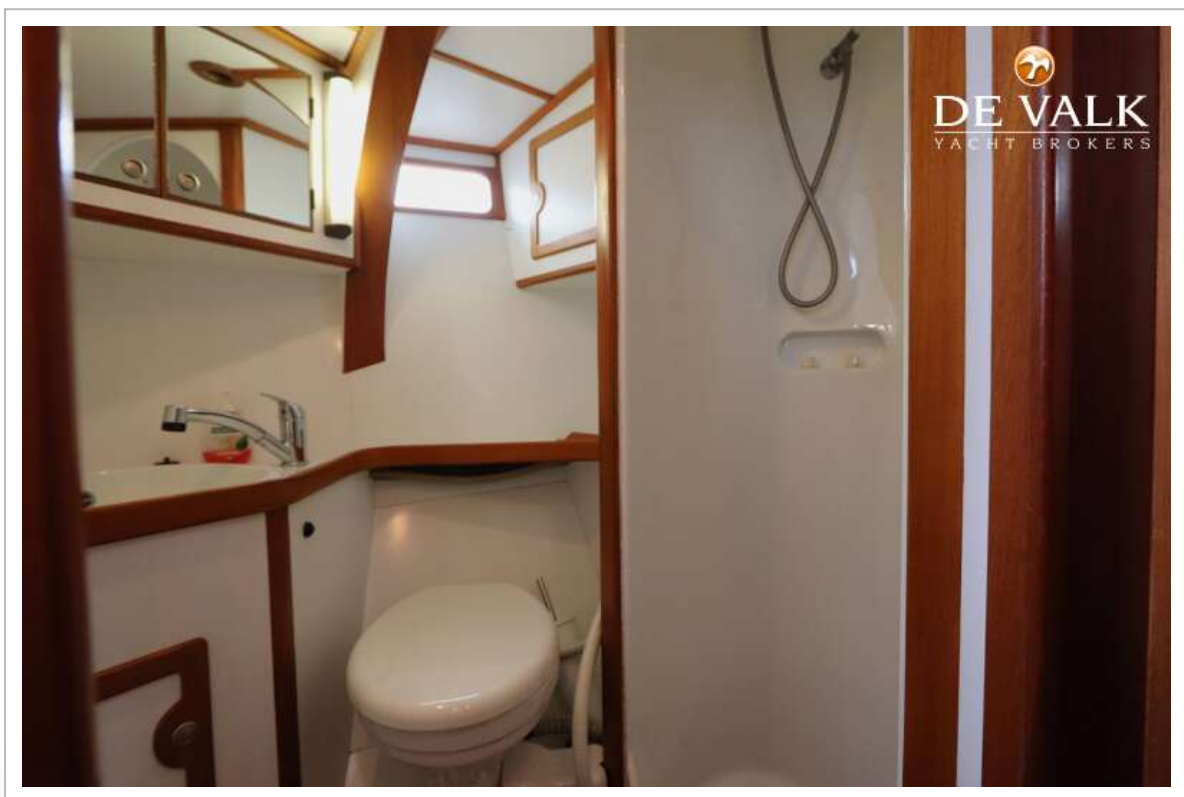
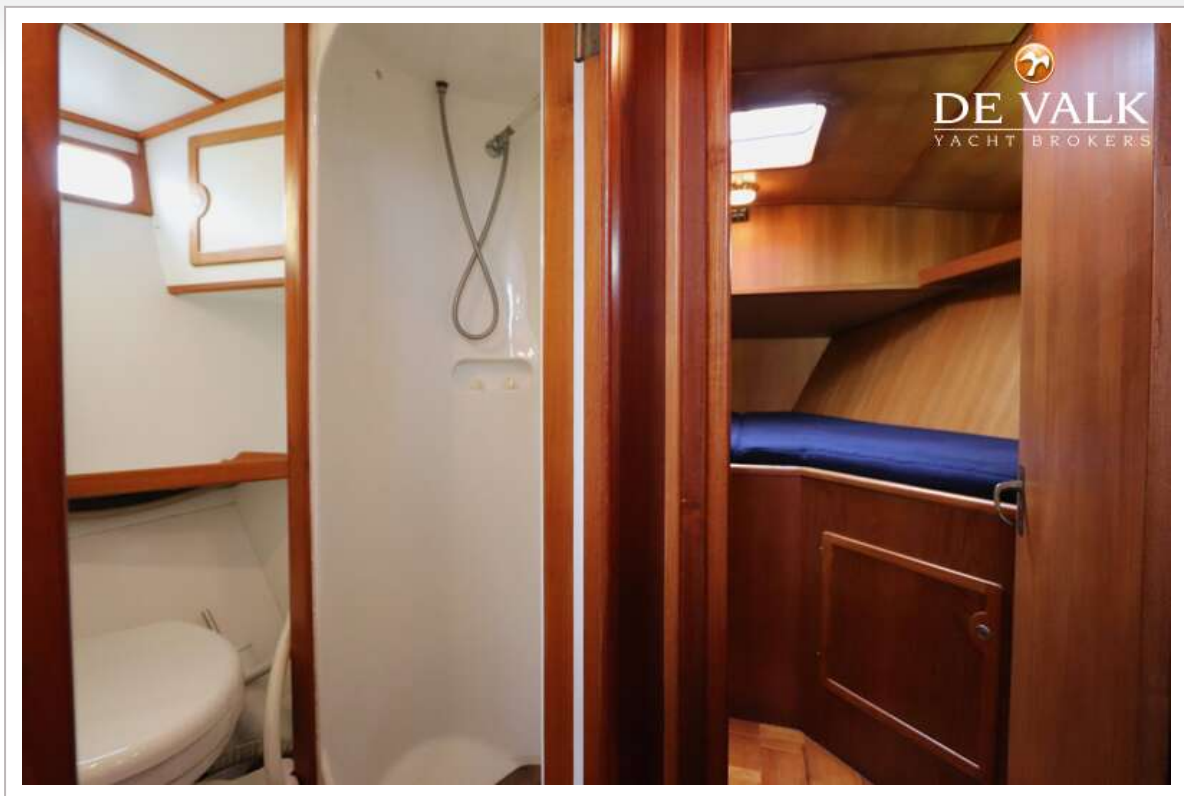
GLACER 40



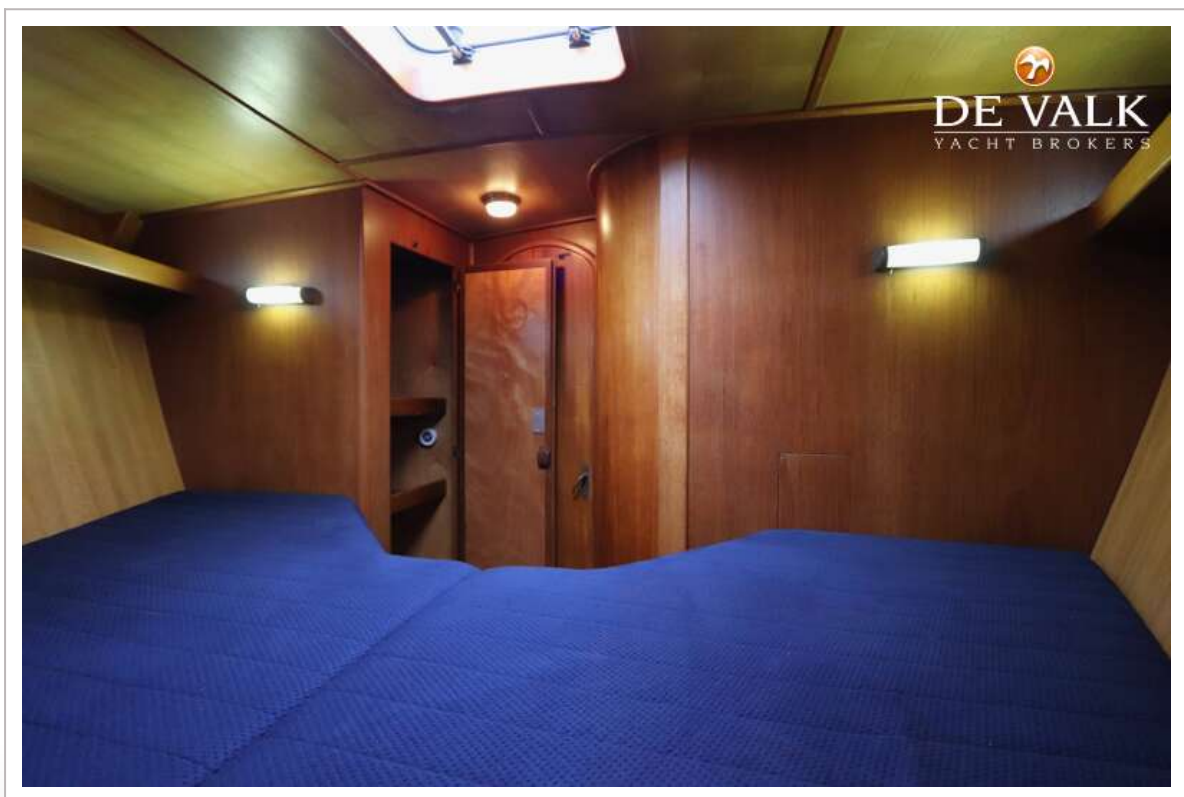
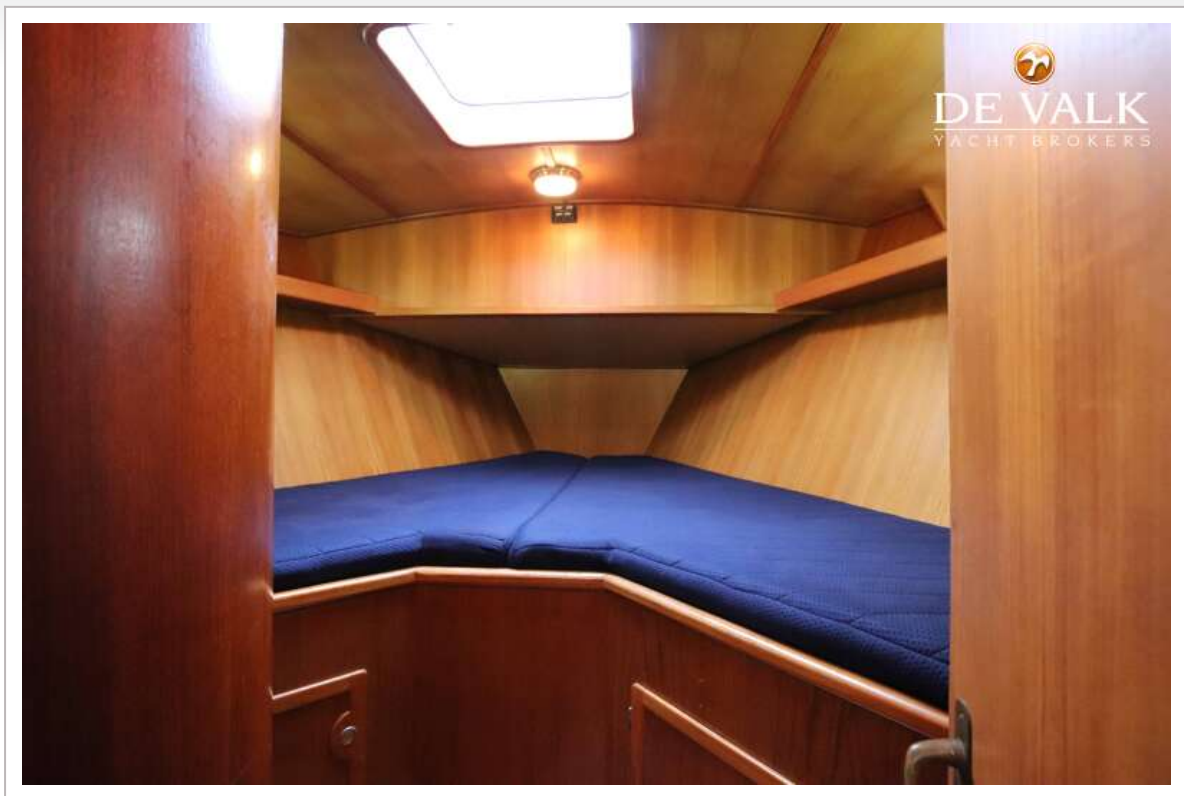
GLACER 40



GLACER 40



GLACER 40



GLACER 40



GLACER 40



GLACER 40



GLACER 40

