



## APREAMARE 38 COMFORT

# APREAMARE 38 COMFORT

## BROKER'S COMMENTS

The Apreamare 38 Comfort is specially designed for larger open waters, but is also very capable to cruise inland waterways and rivers. The interior offers a lot of space and a large double bed in the owners cabin. With the twin engines and bow- and sternthruster with remote controls maneuvering is easy and can even be done when standing on deck. The Apreamare 38 Comfort can be visited in our covered marina 7 days a week.

*Mark Hesselmans*

## SPECIFICATIONS

<b>Dimensions</b>	11.29 x 3.45 x 1.00 (m)	<b>Builder</b>	Apreamare
<b>Built</b>	2006	<b>Cabins</b>	1
<b>Material</b>	GRP	<b>Berths</b>	4
<b>Engine(s)</b>	2 x VM Motori MD706LX diesel	<b>Hp/Kw</b>	2 x 320.00 (hp), 235.20 (kw)
<b>Asking price</b>	sold (VAT )	<b>Lying</b>	at sales office

## CONTACT

<b>Sales office</b>	De Valk Loosdrecht B.V.	<b>Telephone</b>	+31 (0)35 582 90 30
<b>Address</b>	't Breukeleveense Meentje 6 1231LM Loosdrecht / Wijdmeren NL	<b>E-mail</b>	loosdrecht@devalk.nl

## DISCLAIMER

These particulars are given in good faith as supplied but cannot be guaranteed.



# APREAMARE 38 COMFORT

## GENERAL

Model	APREAMARE 38 COMFORT
Type	motor yacht
LOA (m)	11,29
LWL (m)	10,00
Beam (m)	3,45
Draft (m)	1,00
Air draft (m)	4,50
Air draft min (m)	3,75
Headroom (m)	1,90
Year built	2006
Builder	Apreamare
Country	Italy
Designer	Giovanni Aprea
Displacement (t)	9
CE norm	B
Hull material	GRP
Hull colour	blue
Hull shape	deep-V
Superstructure material	GRP
Rubbing strake	stainless steel
Deck material	GRP
Deck finish	teak
Cockpit deck finish	teak
Antifouling (year)	2019
Window frame	stainless steel
Window material	glass
Deckhatch	yes
Portholes	stainless steel
Radar arch	collapsible
Fuel tank (litre)	steel 375



Fuel tank 2 (litre)	steel 375
Level indicator (fuel tank)	yes
Freshwater tank (litre)	stainless steel 230
Level indicator (freshwater)	yes
Blackwater tank (litre)	GRP 50
Level indicator (blackwater)	yes
Blackwater tank extraction	deck extraction + pump
Wheel steering	hydraulic
Outside helm position	hydraulic

## ACCOMMODATION

Cabins	1
Berths	4
Interior	cherry
Floor	teak and holly
Open cockpit	yes
Aft deck	yes
Saloon	yes
Headroom saloon (m)	1,9
Sliding roof	manual In cockpit
Heating	diesel ducted hot air Eberspächer Airtronic D5
Dinette	yes
Dinette to convert into berth	yes
Opening door to aft deck	yes
Galley	yes
Countertop	plastic
Sink	stainless steel
Cooker	calor gas 2 burner
Fridge	Isotherm
Freezer	In fridge
Hot water system	220V + engine Quick 40 Liter



# APREAMARE 38 COMFORT

Water pressure system	electrical
Owners cabin	double bed
Bed length (m)	2
Wardrobe	hanging/drawers/shelves
Bathroom	separate
Toilet	separate
Toilet system	electric
Wash basin	in the bathroom
Shower	separate

## MACHINERY

No of engines	2
Make	VM Motori
Type	MD706LX
HP	320
kW	235,20
Fuel	diesel
Year installed	2006
Maximum speed (kn)	25
Cruising speed (kn)	22
Engine hours	550
Engine cooling system	freshwater heat exchanger
Drive	shaft
Shaft seal	yes
Engine controls	bowden cable
Gearbox	hydraulic ZF
Bowthruster	electric Sidepower with remote control
Sternthruster	electric Sidepower with remote control
Exhaust	watercooled
Propeller type	fixed
Propeller blades	4



# APREAMARE 38 COMFORT

Propeller shaft material	stainless steel
Shaft lubrication	water
Manual bilge pump	yes
Electric bilge pump	yes
Start battery	2x
Service battery	4x
Bowthruster battery	1x
Sternthruster battery	1x
Battery charger	Mastervolt IVO smart 12V/50-3
Inverter	Mastervolt Mass 12V/2000W
Shorepower	with cable
Trimtabs	yes

## NAVIGATION

Compass	yes
Depth sounder/log	Raymarine
Windset	Raymarine
Fish finder	In plotter
VHF	Raymarine Ray 55E
Autopilot	Raymarine with remote
Rudder angle indicator	yes
Radar/GPS/plotter	Raymarine Hybrid touch
Navigation lights	yes

## EQUIPMENT

Fixed windscreen	Stainless steel
Fixed hardtop	yes
Cockpit cover	yes
Sun awning	yes
Window cover	yes
Cockpit cushions	yes



# APREAMARE 38 COMFORT

Bathing platform	yes
Boarding ladder	stainless steel
Gangway	Opacmare hydraulic
Deck shower	yes
Anchor	Bruce
Anchor chain	yes
Windlass	electrical
Outboard support	yes
Sea railing	stainless steel
Grab rail (superstructure)	stainless steel
Wiper	2x
Horn	electric
Radar reflector	yes
Fenders	yes
Mooring lines	yes
TV	Alphatronics & Philips
Satellite	Technisat
TracVision ball	M3
Radio-cd player	Fusion MSAV700i
Cockpit speakers	Fusion
Speakers in salon	Fusion
Clock - barometer	yes



# APREAMARE 38 COMFORT

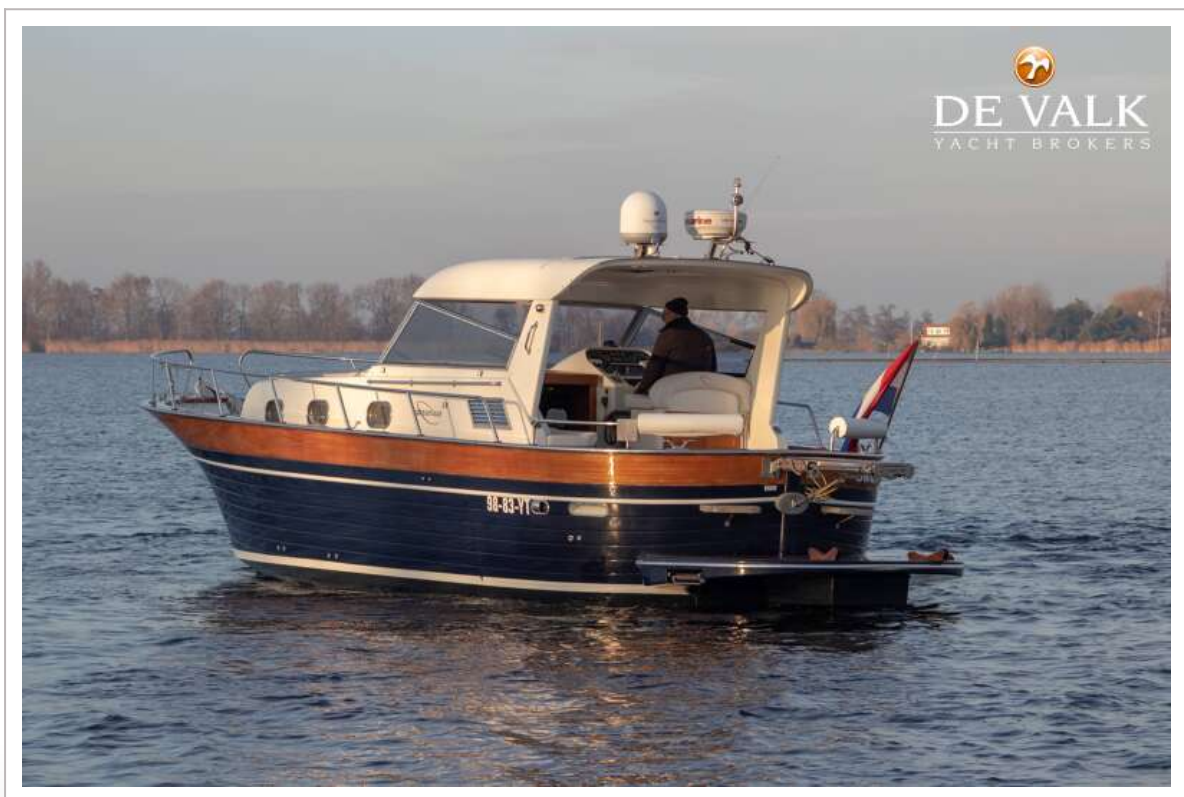
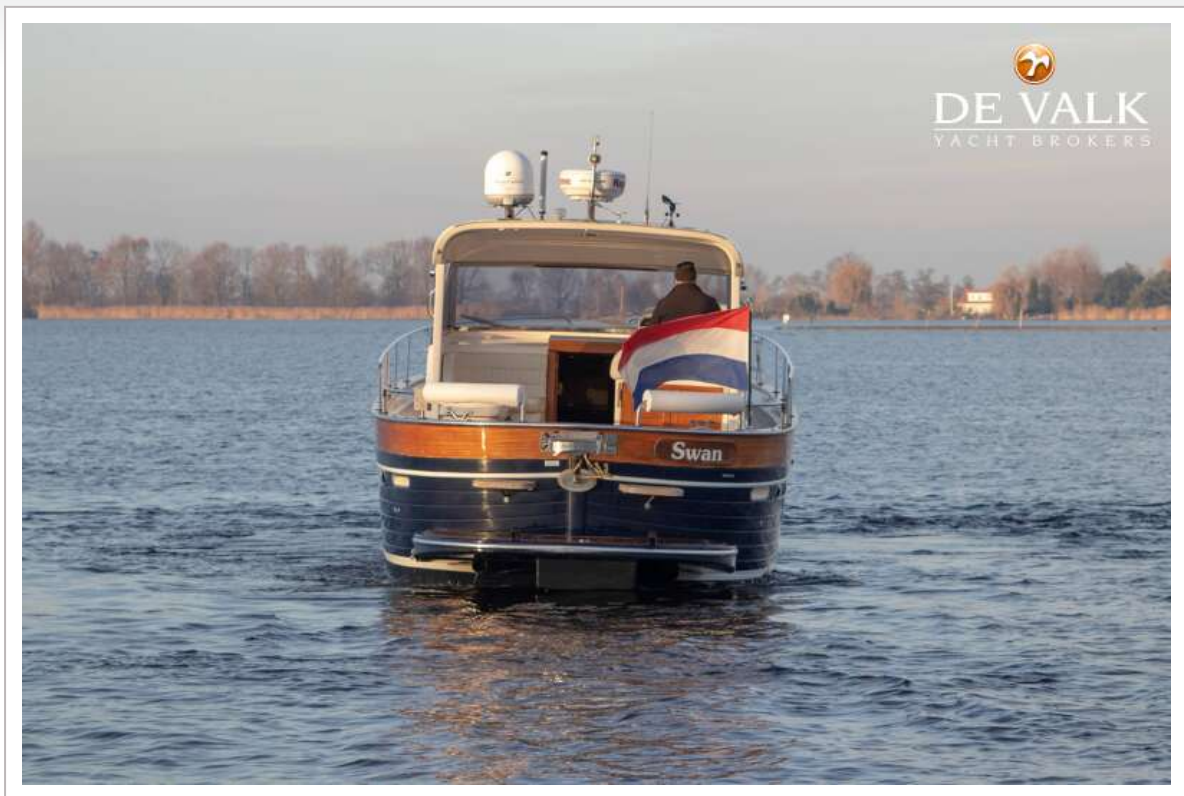




# APREAMARE 38 COMFORT



# APREAMARE 38 COMFORT

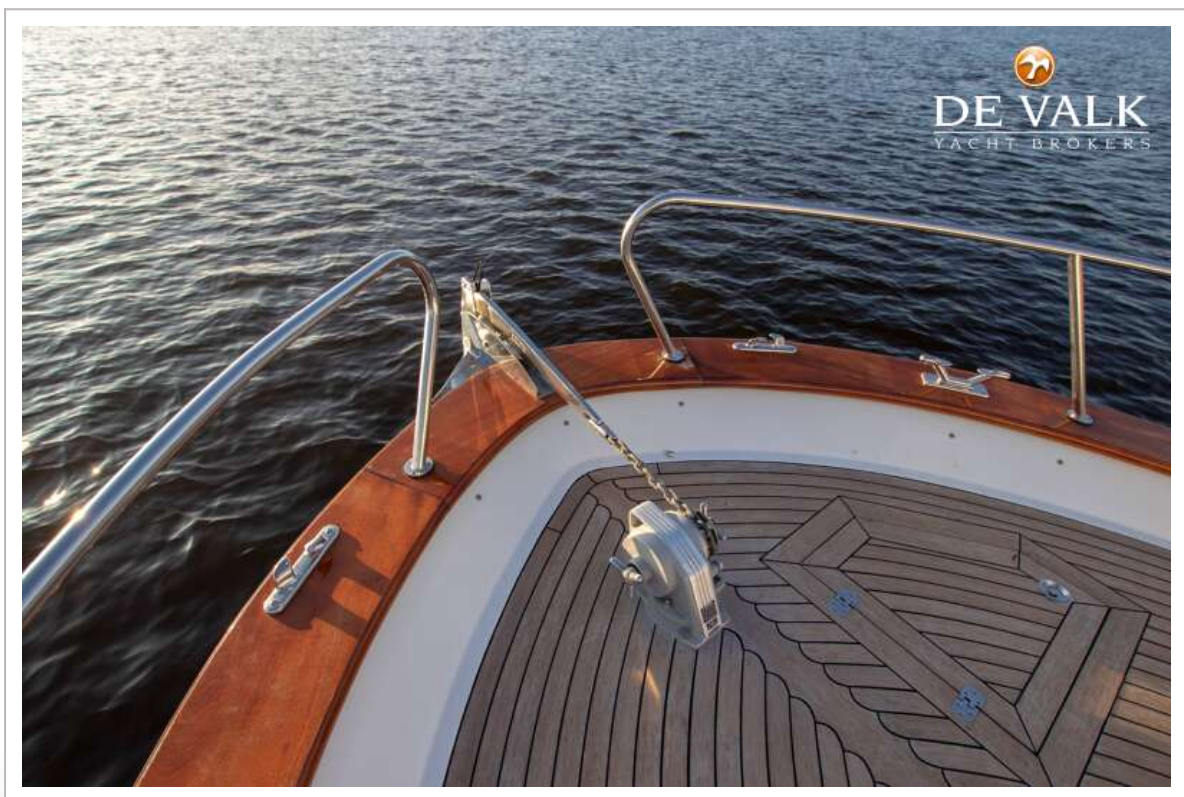




# APREAMARE 38 COMFORT



# APREAMARE 38 COMFORT

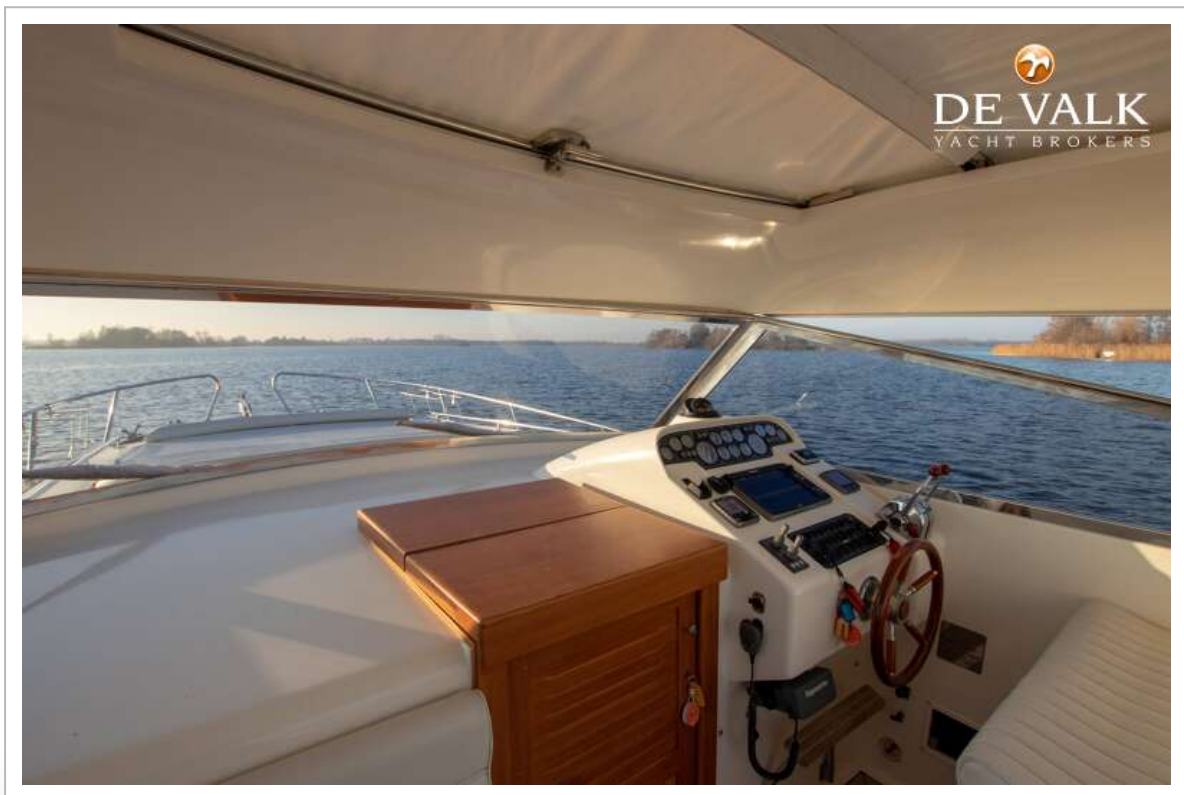
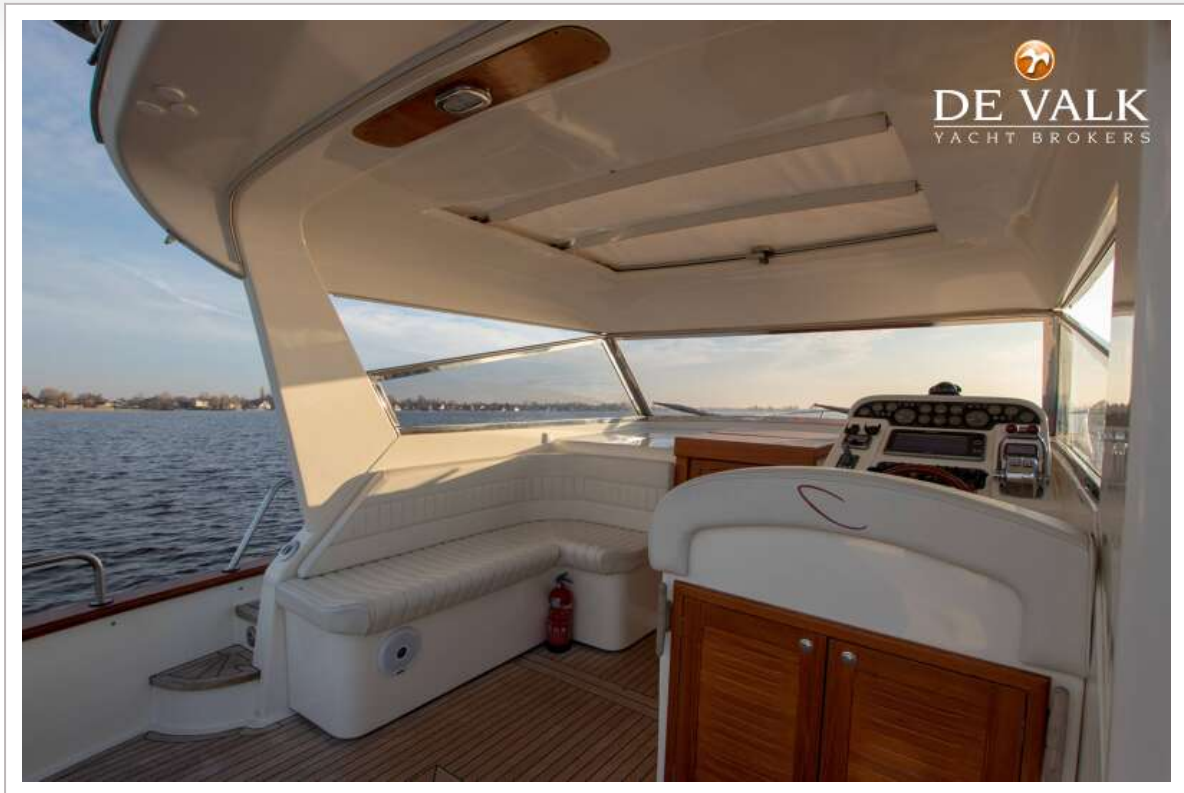




# APREAMARE 38 COMFORT

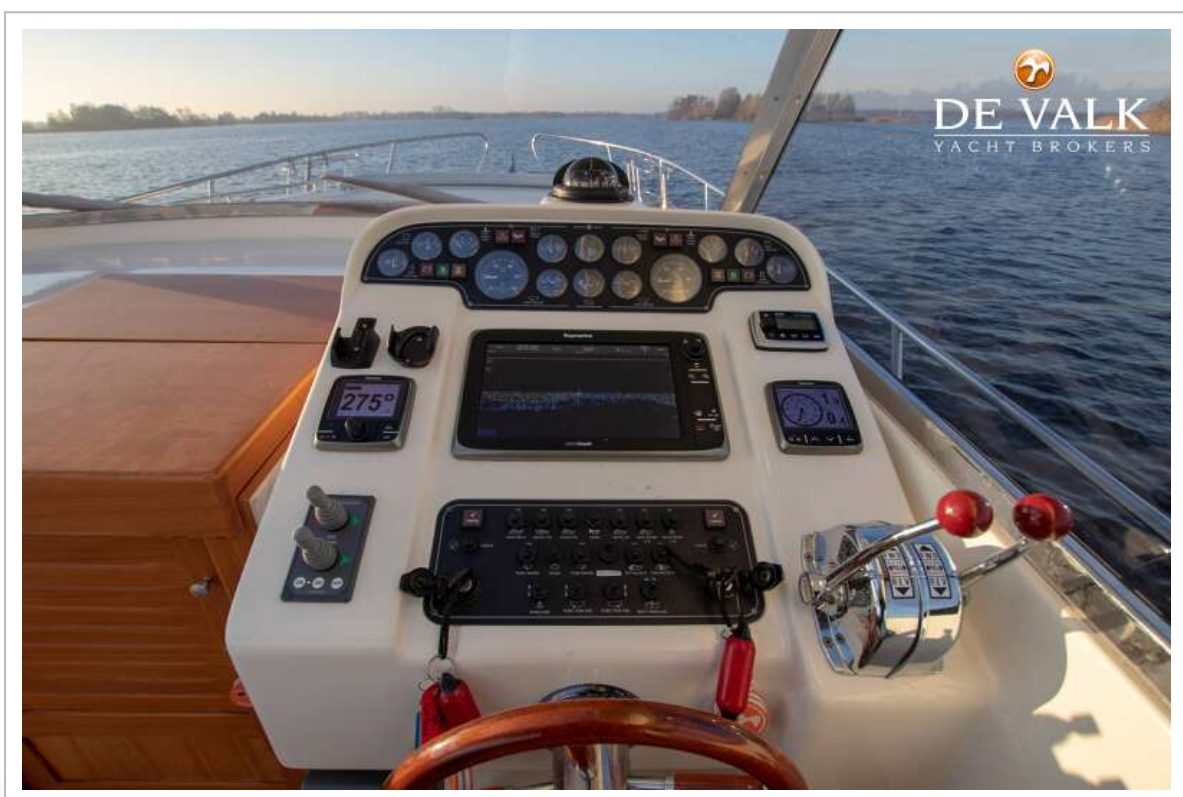
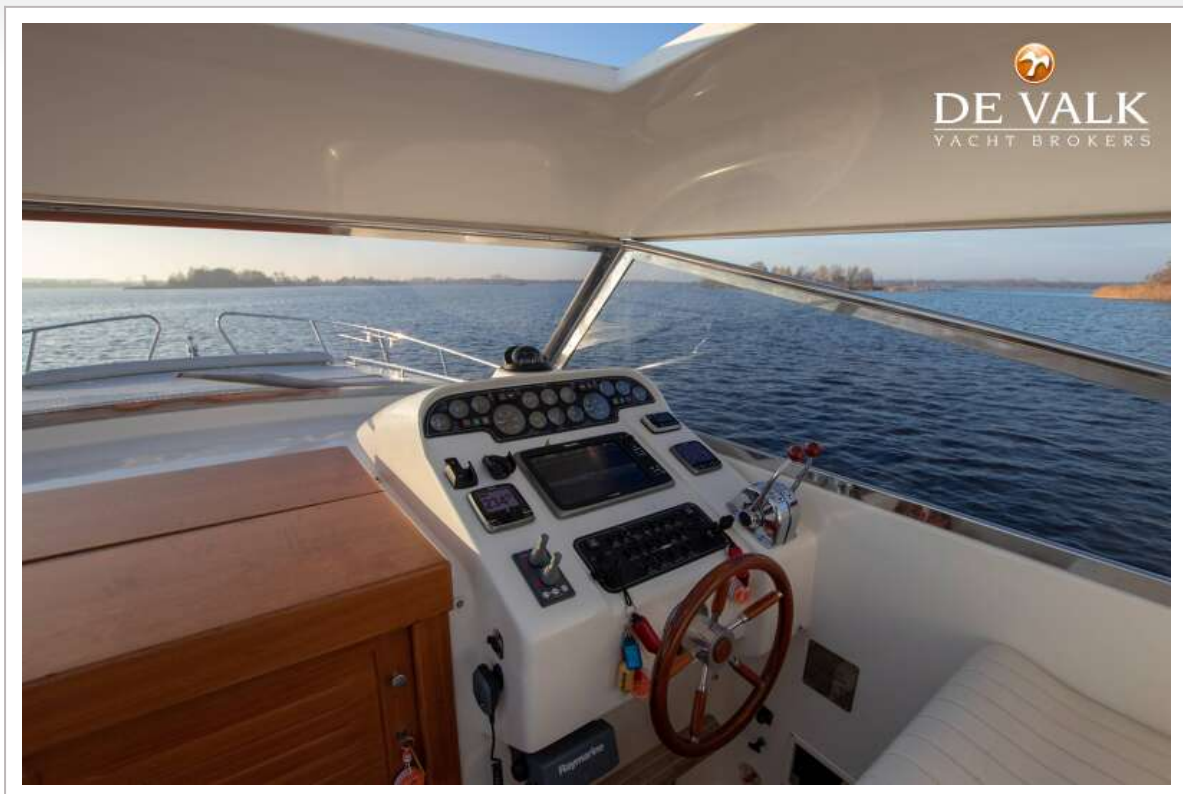


# APREAMARE 38 COMFORT

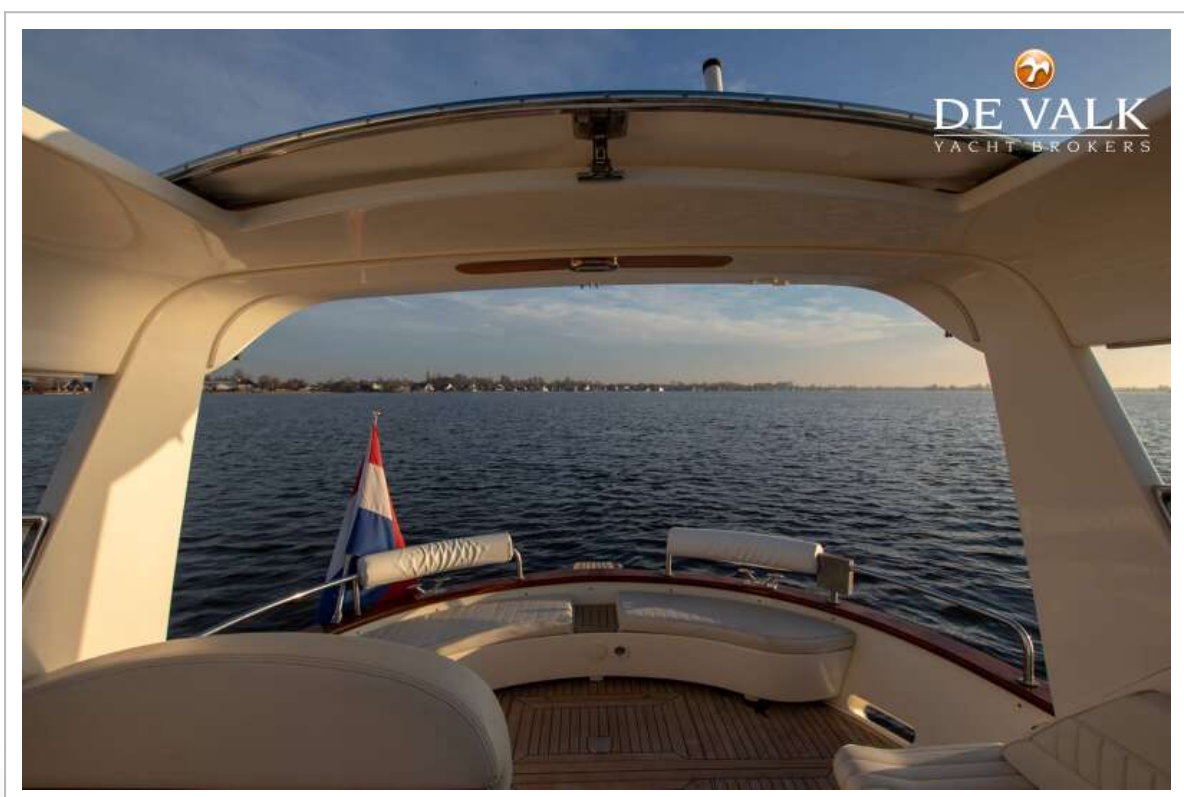




# APREAMARE 38 COMFORT



# APREAMARE 38 COMFORT

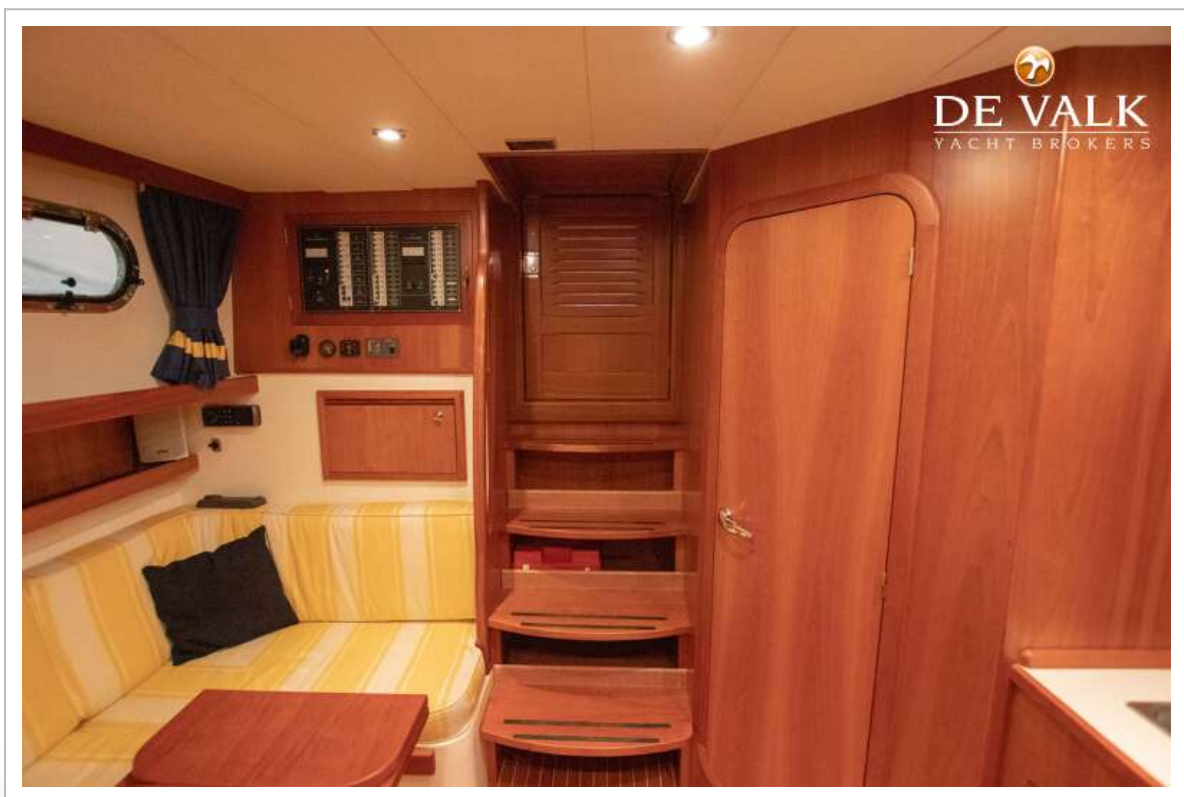




# APREAMARE 38 COMFORT

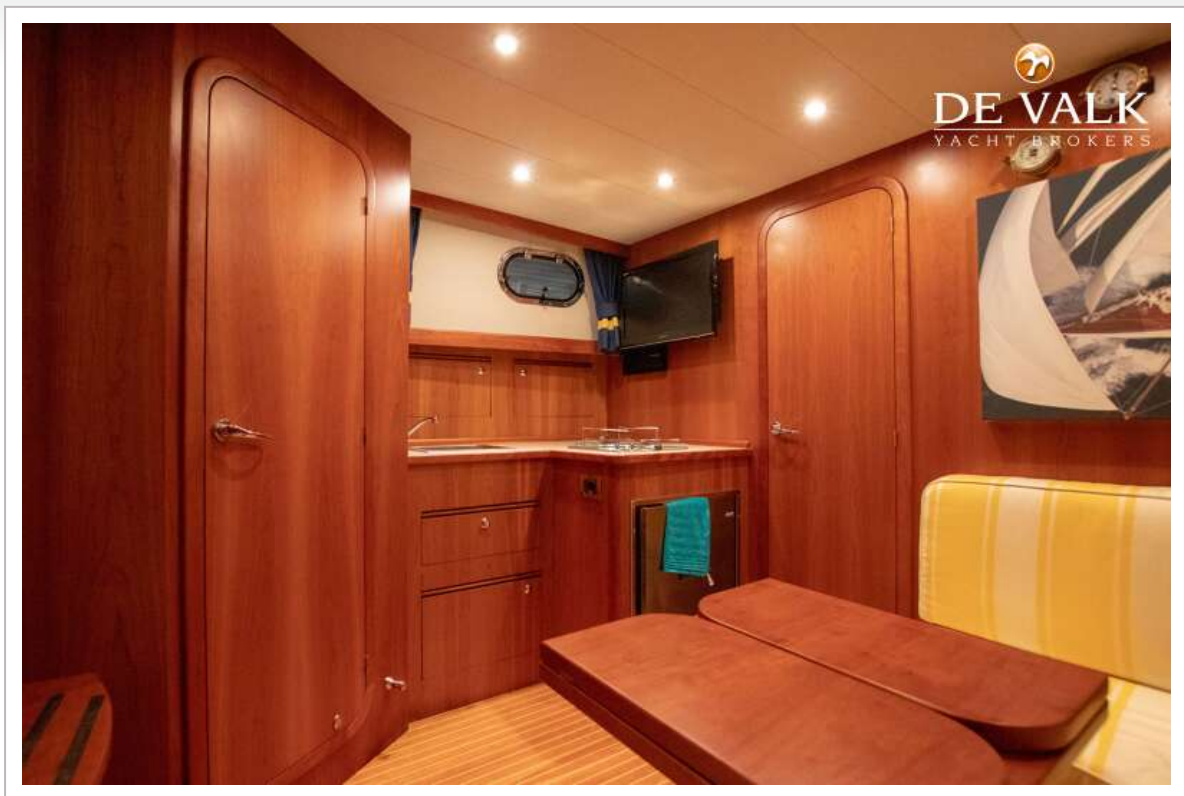


# APREAMARE 38 COMFORT





# APREAMARE 38 COMFORT



# APREAMARE 38 COMFORT





# APREAMARE 38 COMFORT



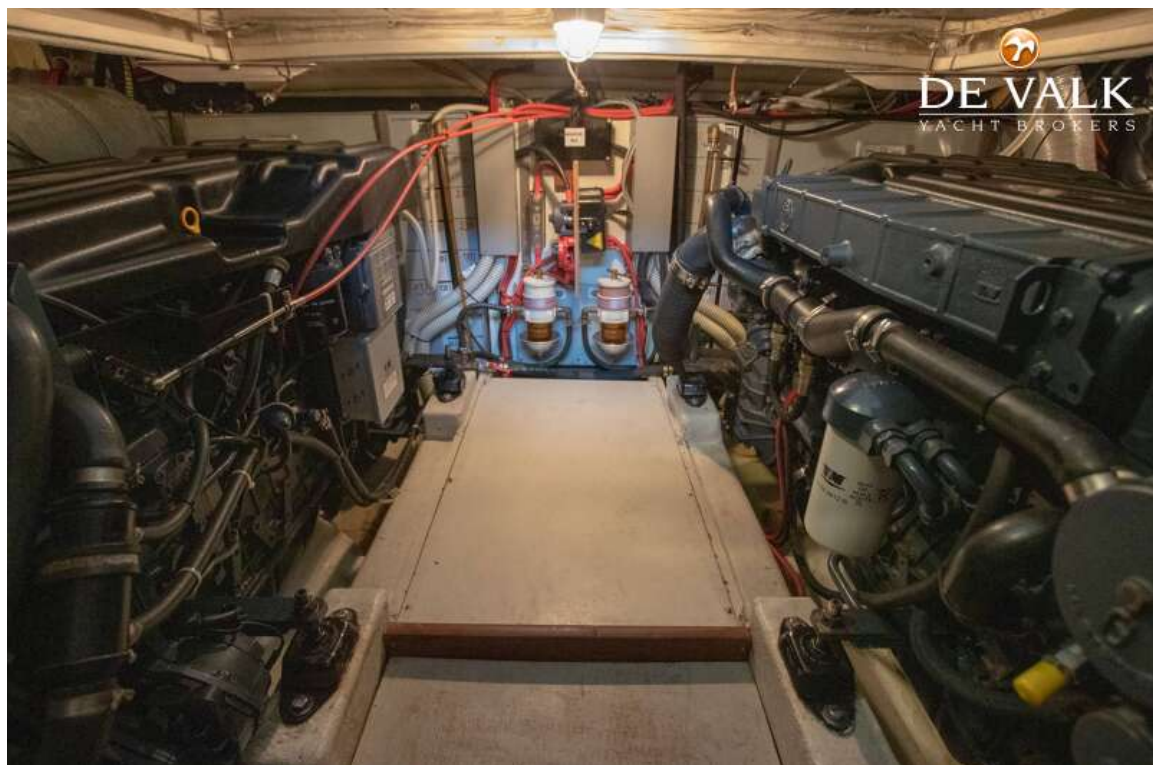


# APREAMARE 38 COMFORT



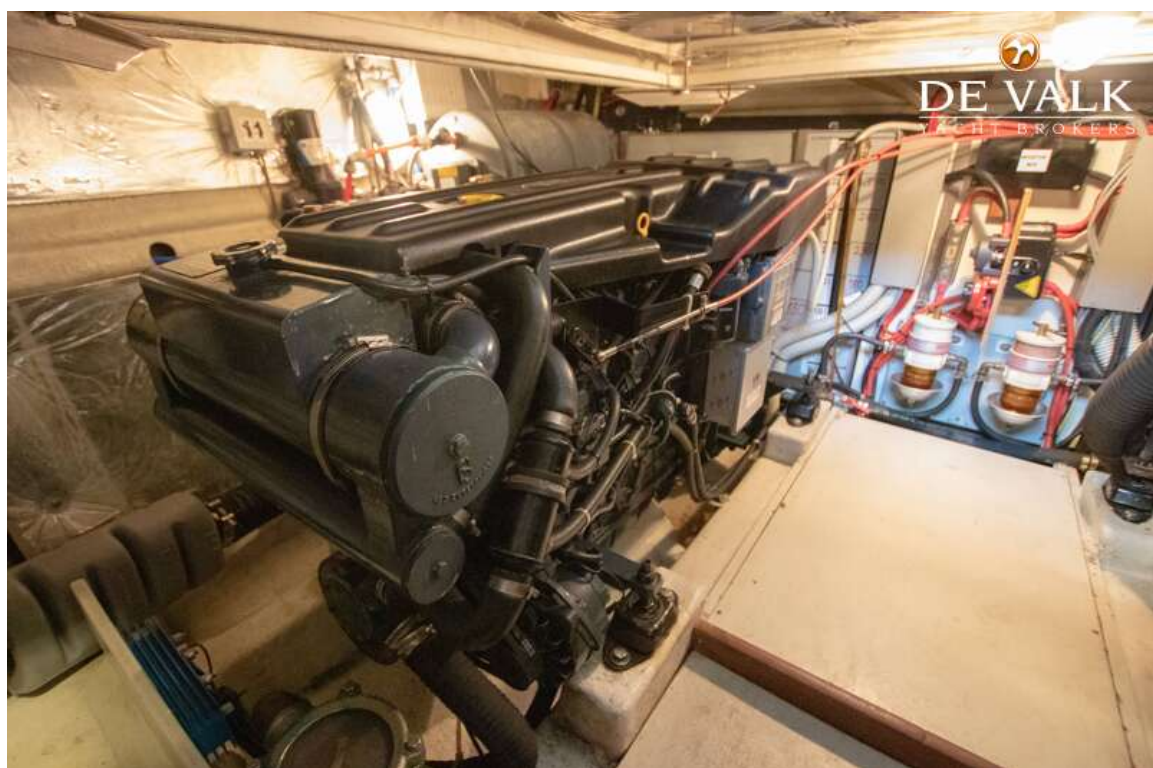


# APREAMARE 38 COMFORT





# APREAMARE 38 COMFORT



## APREAMARE 38 COMFORT

