



DE VALK
YACHT BROKERS



FORMOSA NEW HORIZON 68



DE VALK
YACHT BROKERS

FORMOSA NEW HORIZON 68

BROKER'S COMMENTS

Have you always wanted to sail in a special warm authentic ship with all the space and comfort that you can imagine? This very well maintained Formosa New Horizon 68, has it all, fast, spacious, comfortable and very complete, this exceptionally beautiful ship is now ready to be viewed in Copenhagen by her new owners.

Johan Nooitgedagt

SPECIFICATIONS

Dimensions	21.60 x 5.30 x 1,70 / 3.18 (m)	Builder	Formosa Yachts
Built	1983	Cabins	3
Material	GRP	Berths	8
Engine(s)	1 x Ford Lehman 2704ET diesel	Hp/Kw	150.00 (hp), 110.25 (kw)
Asking price	sold (VAT)	Lying	elsewhere / Not at sales office

CONTACT

Sales office	De Valk Hindeloopen B.V.	Telephone	+31 514 52 40 00
Address	Oosterstrand 1 8713 JS Hindeloopen NL	E-mail	hindeloopen@devalk.nl

DISCLAIMER

These particulars are given in good faith as supplied but cannot be guaranteed.



GENERAL

Model	FORMOSA NEW HORIZON 68
Type	sailing yacht
LOA (m)	21,60
LWL (m)	17,80
Beam (m)	5,30
Draft (m)	3,18
Draft min (m)	1,70
Headroom (m)	2,00
Year built	1983
Builder	Formosa Yachts
Country	Taiwan
Designer	Stanley Huntingford
Displacement (t)	37,3
Ballast (tonnes)	lead
Hull material	GRP
Hull colour	white
Hull shape	round-bilged
Keel type	centreboard
Superstructure material	GRP
Rubbing strake	stainless steel On teak
Deck material	GRP
Deck finish	non-skid moulded in
Superstructure deck finish	non-skid moulded in
Cockpit deck finish	teak
Antifouling (year)	2023
Window frame	brass
Window material	tempered glass
Deckhatch	6x
Fuel tank (litre)	stainless steel - 1800 ltr. in four tanks
Level indicator (fuel tank)	- indicator in each tank



Freshwater tank (litre)	polyethylene - 3800 ltr. in two tanks
Level indicator (freshwater)	- indicator in each tank
Blackwater tank (litre)	stainless steel
Level indicator (blackwater)	- indicator needs to be connected
Blackwater tank extraction	deck extraction + pump
Greywater tank (litre)	Two tanks
Wheel steering	hydraulic
Emergency tiller	yes

ACCOMMODATION

Cabins	3
Berths	8
Crew cabin	1x
Crew berths	2
Interior	teak
Floor	wood
Aft deck	yes
Saloon	Large and cosy
Headroom saloon (m)	> 2 mtr.
Heating	central hot water - Glembring
Heating 2	stove wood - Bras-Spisen
Navigation center	yes
Chart table	yes
Aft Cabin	Owners cabin
Galley	yes
Countertop	wood
Sink	stainless steel Double
Cooker	calor gas Princess - 3 burner
Oven	In cooker
Microwave	Sharp
Fridge	Tecumseh 4400BTU Refrigeration Compressor - watercooled



Freezer	Tecumseh 4400BTU Refrigeration Compressor - watercooled
Hot water system	220V 120 ltr. & 60 ltr.
Water pressure system	electrical
Owners cabin	double bed Aft cabin
Bed length (m)	2 mtr.
Wardrobe	hanging/drawers/shelves
Bathroom	en suite
Toilet	Jabsco
Toilet system	yes
Wash basin	yes
Shower	In bathtub
Guest cabin 1	double bed - port side cabin
Bed length (m)	2 mtr.
Wardrobe	hanging/drawers/shelves
Bathroom	en suite
Toilet	Jabsco
Toilet system	yes
Wash basin	yes
Shower	In bathtub
Guest cabin 2	double bed Starboard cabin
Bed length (m)	2 mtr.
Wardrobe	hanging/drawers/shelves
Bathroom	en suite
Toilet	Jabsco
Toilet system	yes
Wash basin	yes
Shower	In bathtub
Washing machine	Whirlpool

MACHINERY

No of engines	1
---------------	---



FORMOSA NEW HORIZON 68

Make	Ford Lehman
Type	2704ET
HP	150
kW	110.25
Fuel	diesel
Year installed	1983
Maximum speed (kn)	9.5
Cruising speed (kn)	7
Consumption (l/hr)	5
Engine hours	3700
Engine cooling system	freshwater heat exchanger
Drive	shaft
Engine controls	yes
Gearbox	hydraulic
Bowthruster	electric Side-power 10hp twin - 24V
Exhaust	watercooled
Propeller type	fixed
Propeller blades	4
Propeller shaft material	stainless steel
Shaft lubrication	grease
Manual bilge pump	yes
Electric bilge pump	yes
Electrical installation	12V / 110V on-board network - 220V
Generator	wet exhaust Phasor Marine
Start battery	1x 140Ah - new 2020
Service battery	6x 95Ah
Bowthruster battery	And windlass - 2x 180Ah - new 2020
Battery charger	1x Tystor WP // 1x CTEK multi xs 7000 // Sterling Power 12V 210A
Inverter	Freedom marine 30 12V - 110V Intelligent 1500W 12V - 220V
Solar panel	400W with Solar ChargeMaster
Shorepower	with cable



Watermaker

Sea Quencher (needs to be serviced)

NAVIGATION

Compass

E.S. Ritchie, INC. Pembroke, Mass

Depth sounder/log

Raymarine i50 Tridata

Windset

Raymarine ST60+ WIND

VHF

Raymarine Ray53

Autopilot

Autohelm ST7000 and Raymarine P70s

Radar

Raytheon RL70 outside and Raytheon RC520 inside

Radar/GPS/plotter

Raymarine cSeries + Quantam radar

AIS transceiver

Raymarine AIS650 Class B + Raymarine AIS splitter 100

Radio receiver

SGC SSB radiotelephone transceiver

EPIRB

RescueMe Epirb1 and RescueMe PLB1

Navigation lights

yes

Extra info

Thuraya satellite phone

EQUIPMENT

Sprayhood

2023 Dark blue

Bimini

There is a frame

Cockpit cushions

yes

Cockpit table

yes

Boarding ladder

stainless steel With teak

Anchor

Delta 2 anchors

Anchor chain

yes

Windlass

Nilsson

Capstan

yes

Windlass aft

Nilsson

Dinghy

inflatable

Outboard

5 HP Mariner

Outboard support

yes

Davits

stainless steel



Sea railing	And wire
Grab rail (superstructure)	teak
Railing side opening gates	Yes
Pushpit	yes
Pulpit	yes
Lifebuoy	yes
Danbuoy	yes
Fenders	yes
Mooring lines	yes
Spare parts	Lots of
Tools	yes

RIGGING

Rigging	ketch-cutter
Standing rigging	wire
Material mast	aluminium coated
Spreaders	Two pair and one pair
Keel stepped mast	yes
Mainsail	2015 - dutchman system reefing
Mainsail cover	yes
Fully battened mainsail	yes
Mizzen	Two sails
Mizzen sailcover	yes
Jib	On boom - 2 sails
Genoa	2017
Genoa furler	Rurlex 500S
Reefing System	yes
Backstay adjuster	hydraulic One of the two is broken
Boomvang	yes
Primary sheet winch	2x Lewmar 48
Secondary sheet winch	2x Lewmar 30



Genoa sheetwinches

2x Lewmar 65

Halyard winches

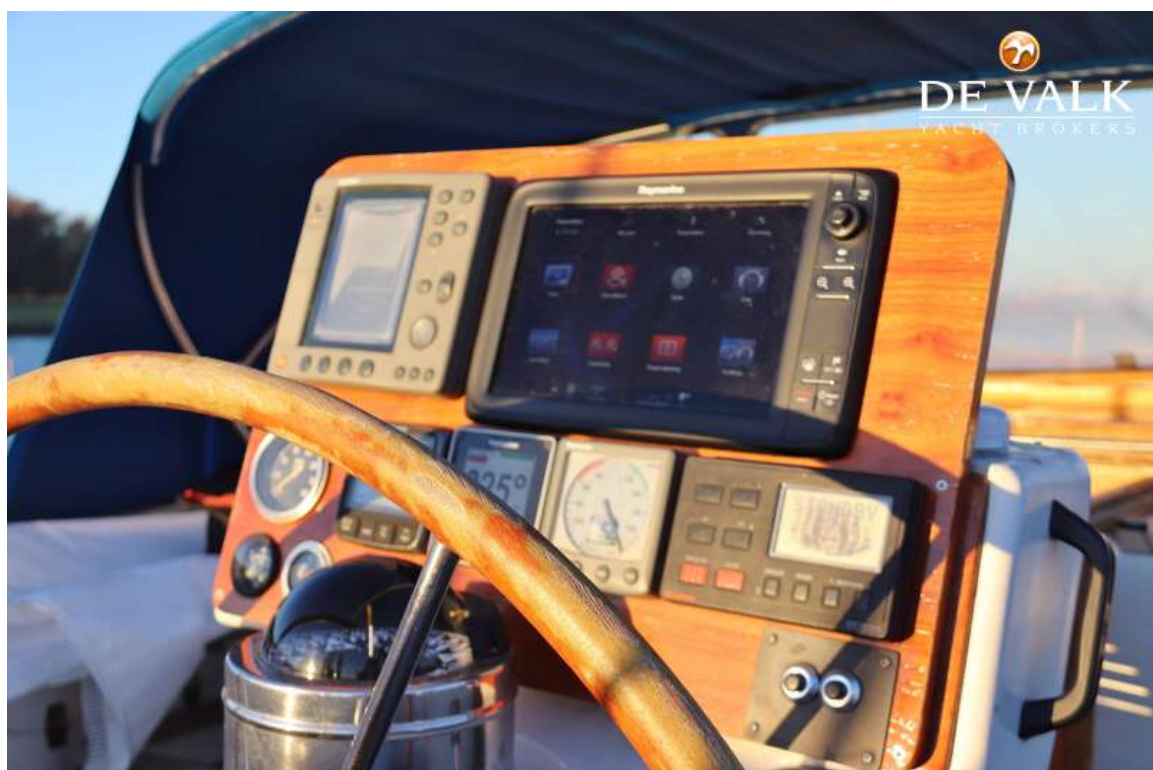
1x Anderson 52 STE, 1x Lewmar 30, 1x Lewmar 44 and one Lewmar on mast.

Spi-pole

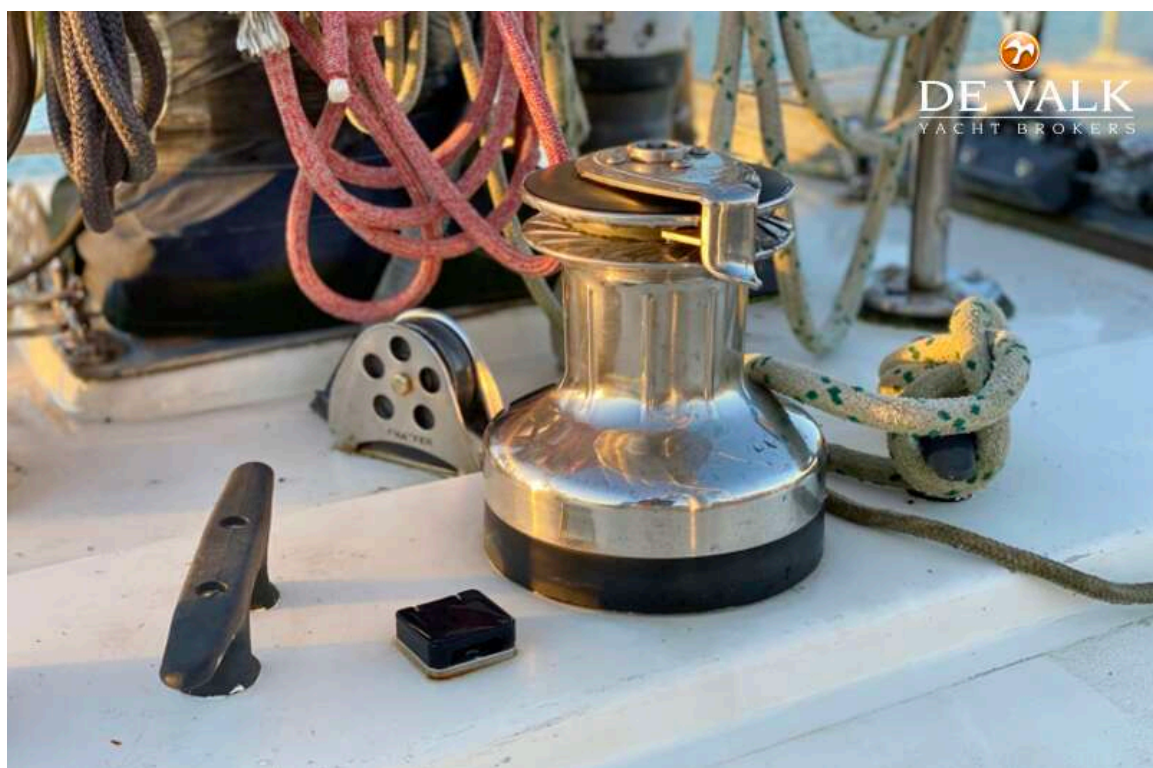
aluminium



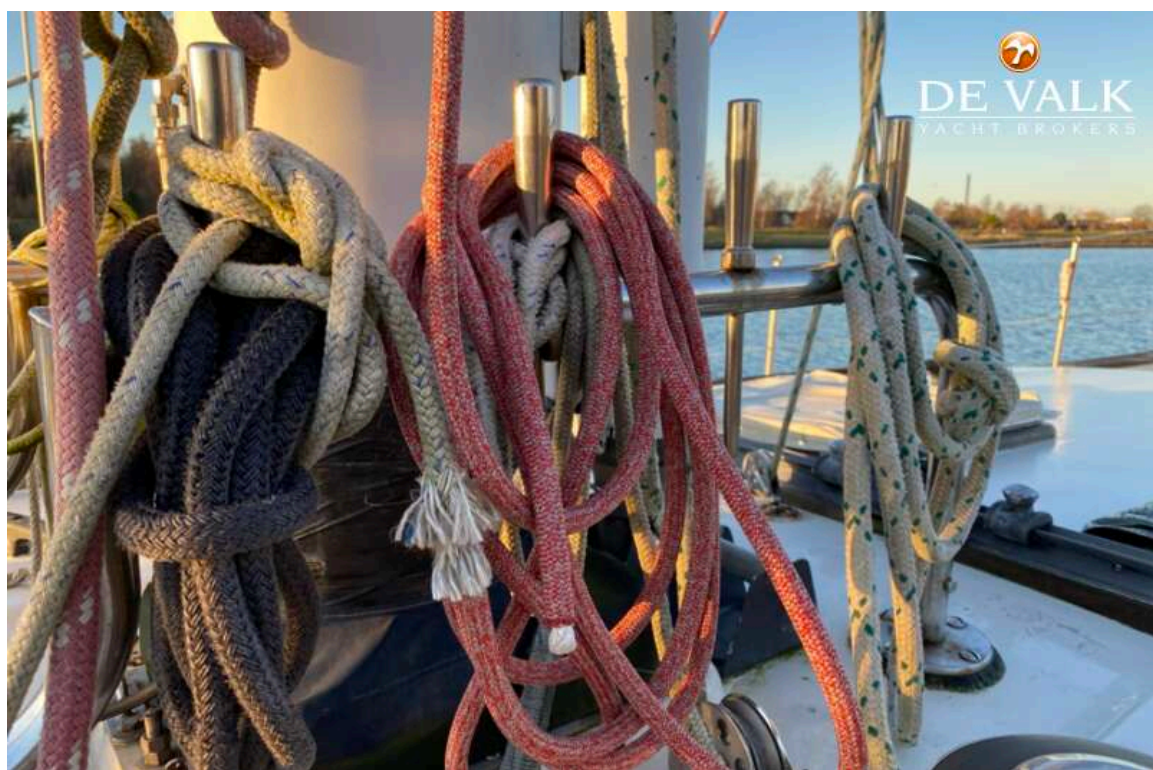
FORMOSA NEW HORIZON 68



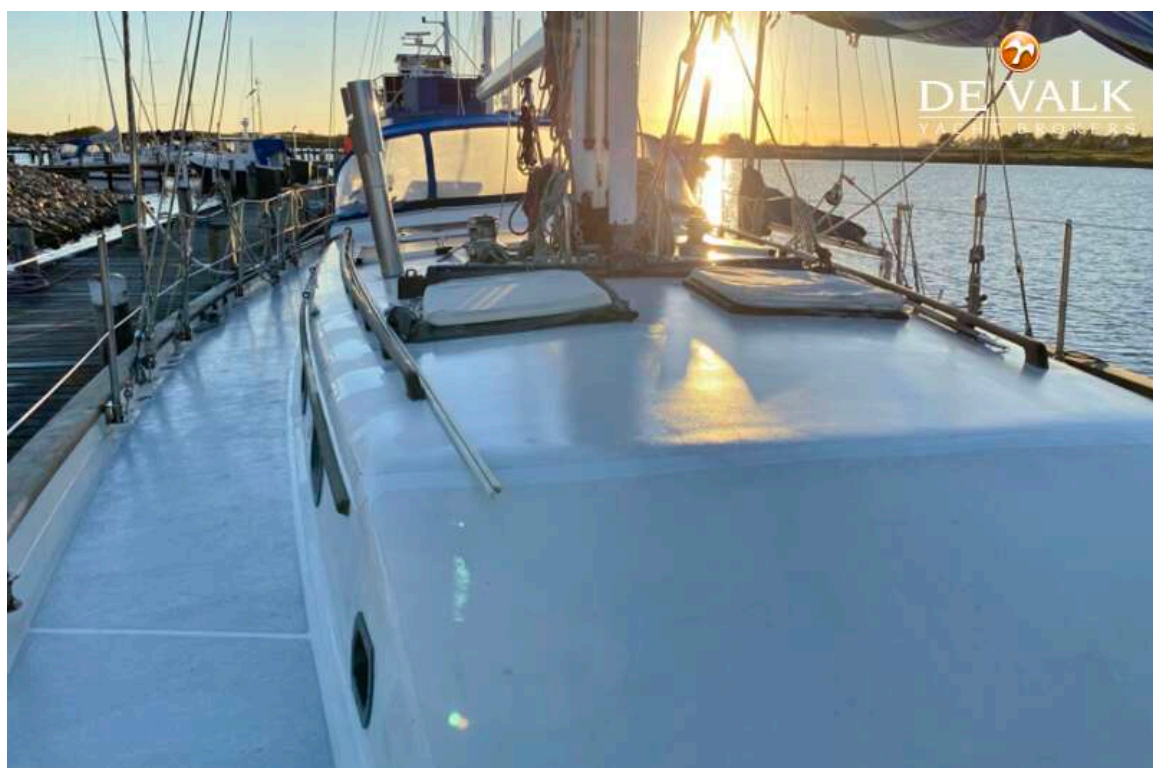
FORMOSA NEW HORIZON 68



FORMOSA NEW HORIZON 68

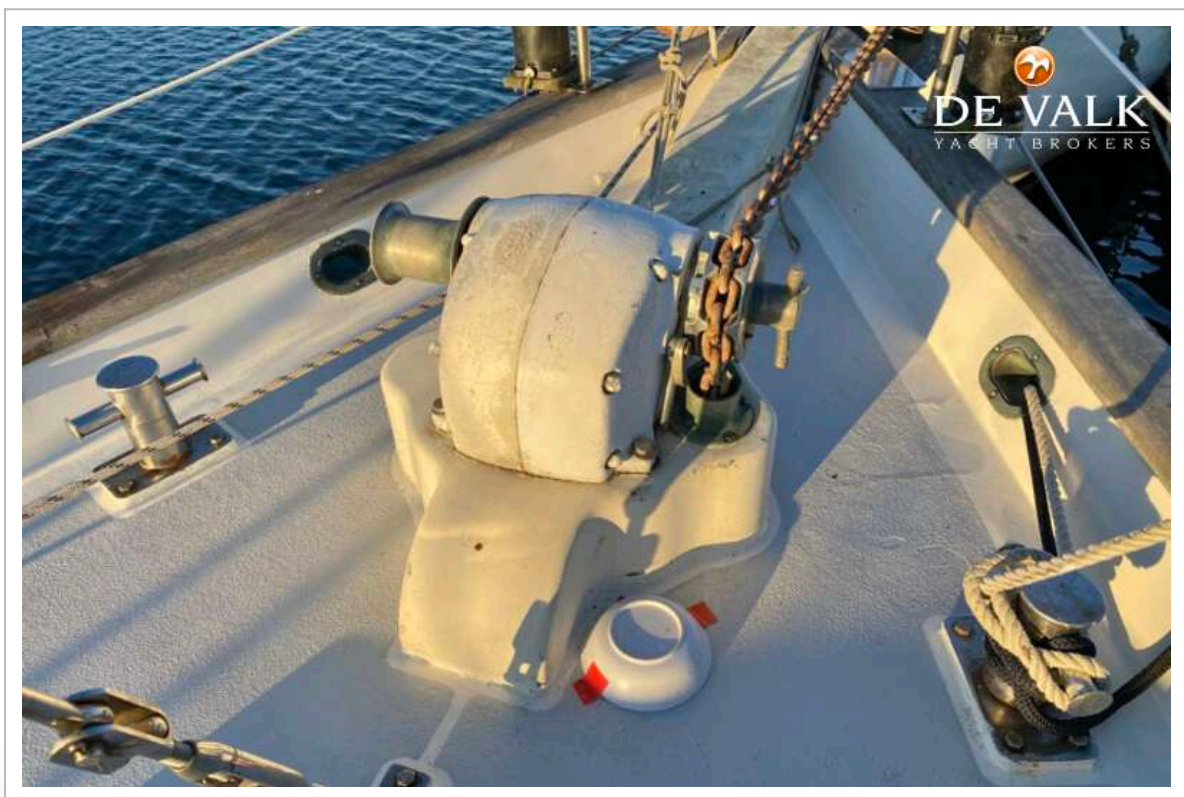


FORMOSA NEW HORIZON 68

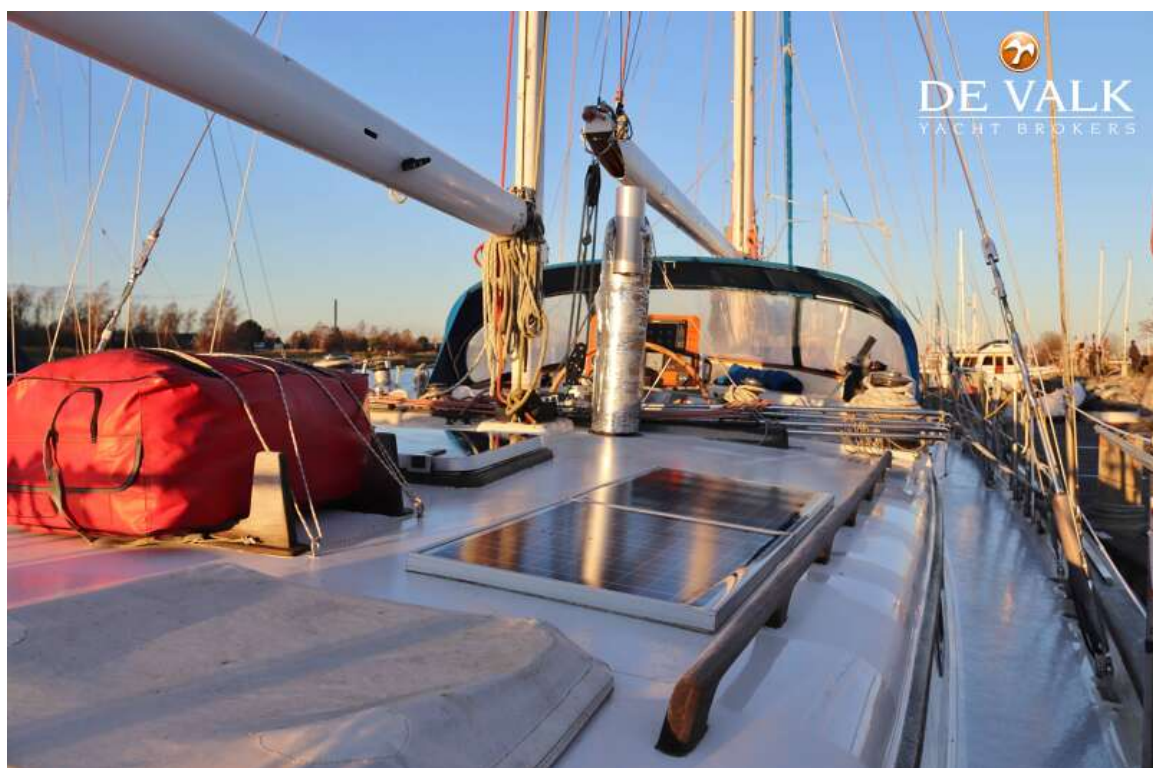




FORMOSA NEW HORIZON 68



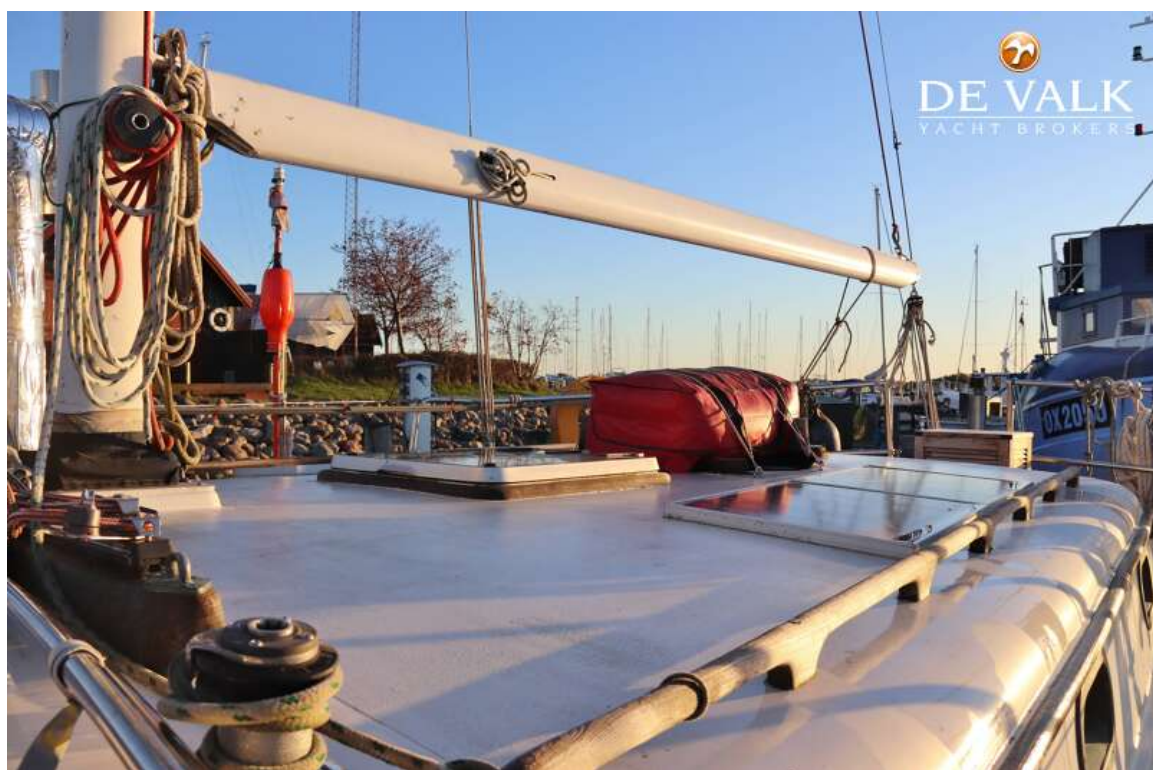
FORMOSA NEW HORIZON 68



FORMOSA NEW HORIZON 68



FORMOSA NEW HORIZON 68



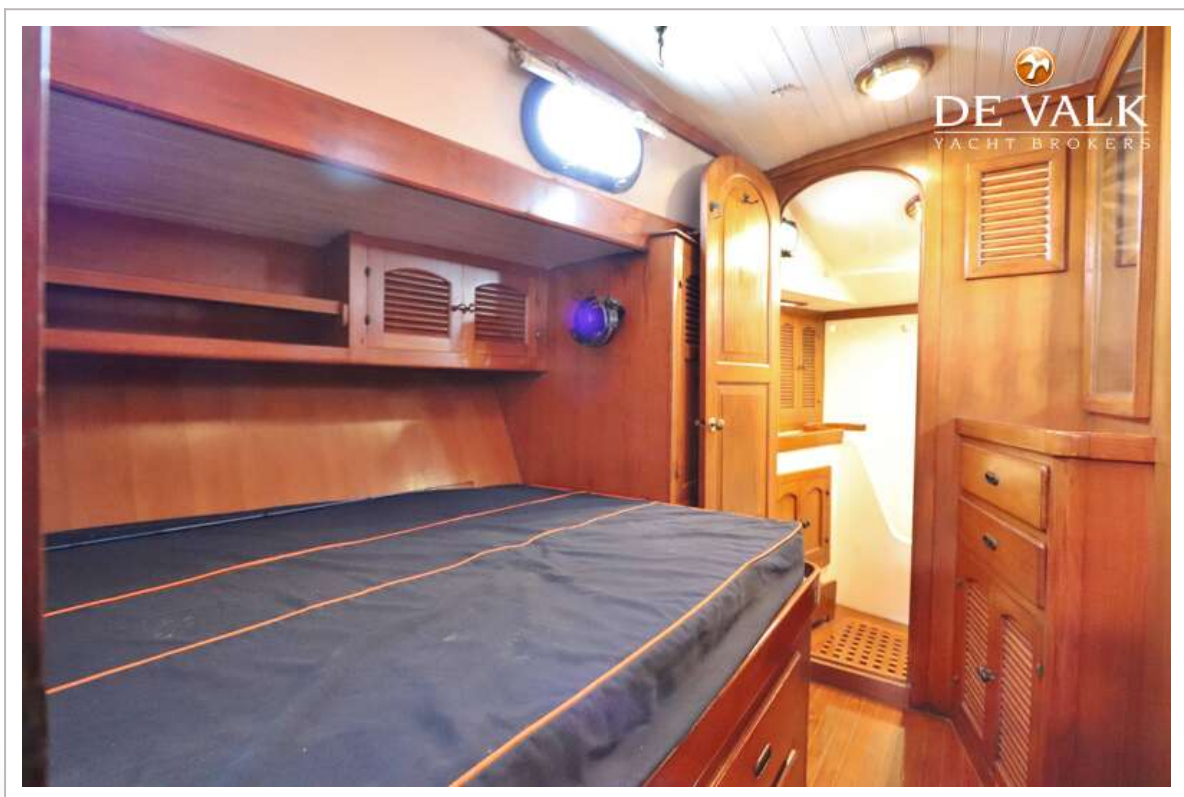
FORMOSA NEW HORIZON 68

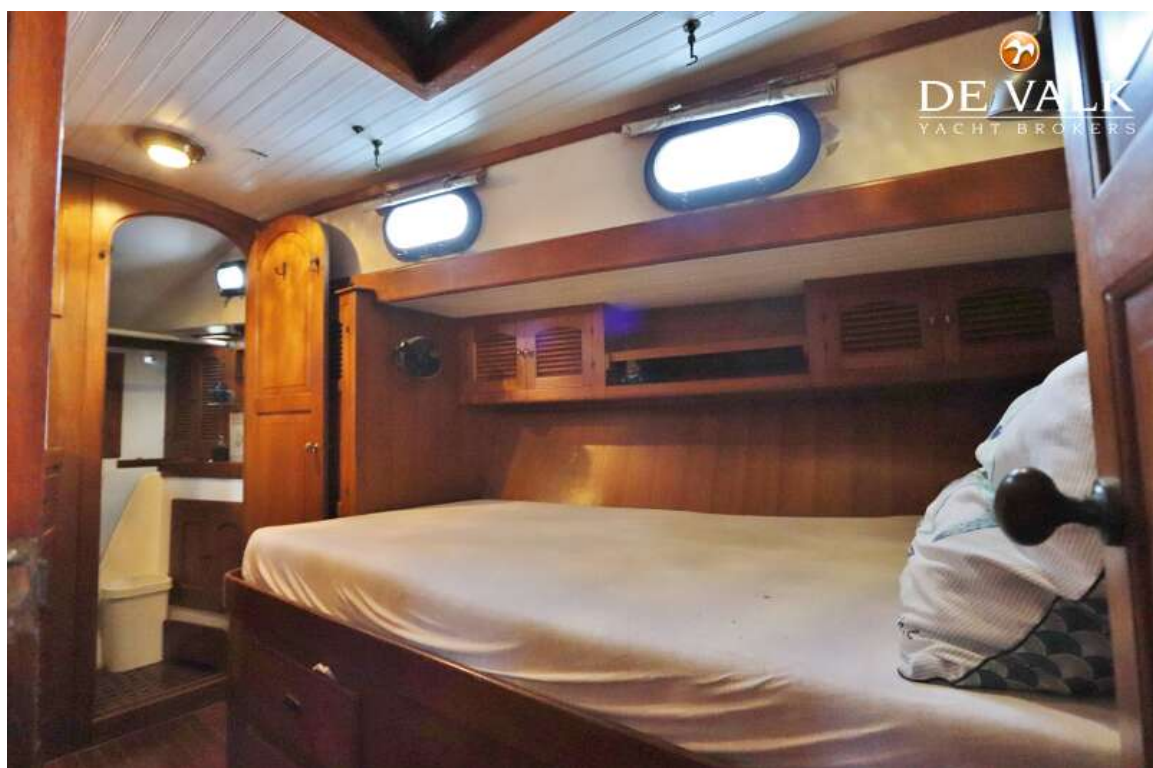


FORMOSA NEW HORIZON 68



FORMOSA NEW HORIZON 68





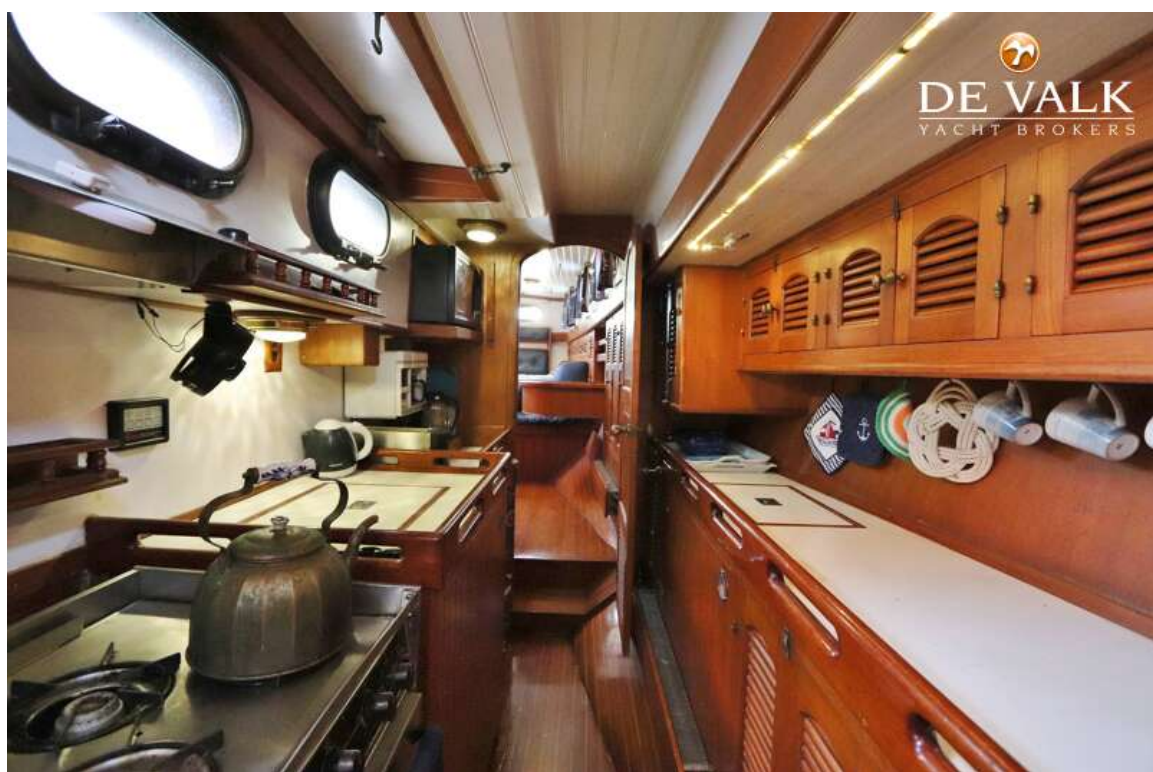
FORMOSA NEW HORIZON 68



FORMOSA NEW HORIZON 68

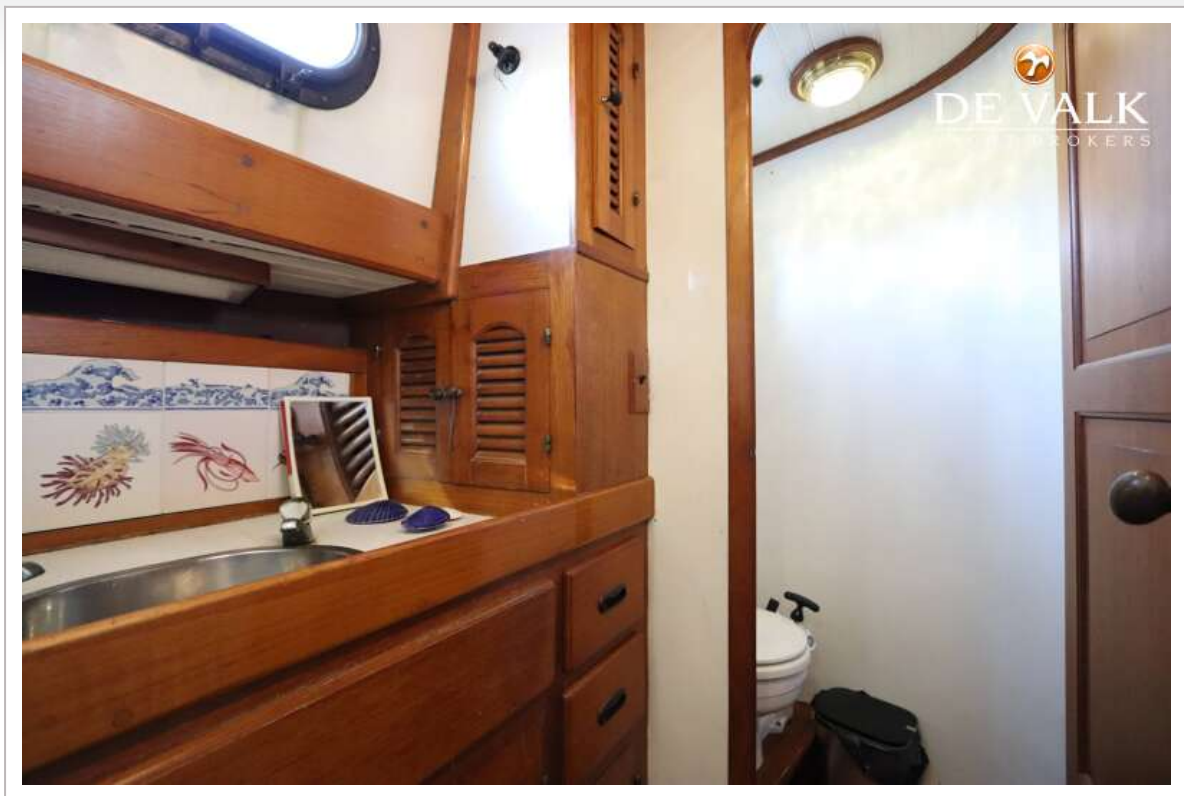


FORMOSA NEW HORIZON 68

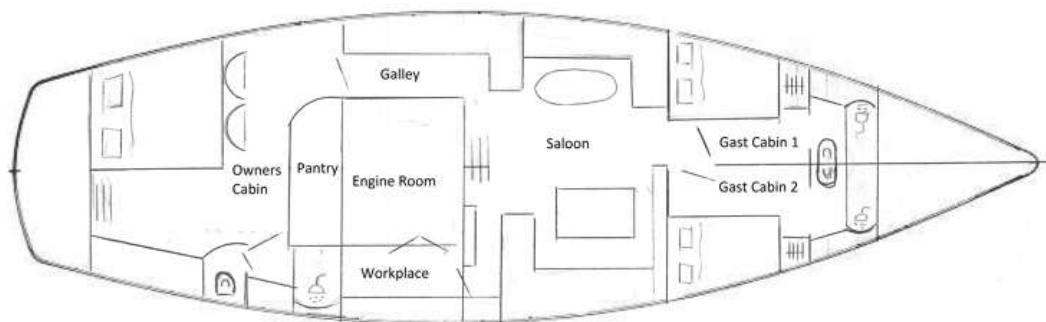


FORMOSA NEW HORIZON 68





FORMOSA NEW HORIZON 68



FORMOSA NEW HORIZON 68

