



DE VALK
YACHT BROKERS



HANSE 400E



DE VALK
YACHT BROKERS

HANSE 400E

BROKER'S COMMENTS

New painted hull, new sails, new navigation, and much more to be named here, in short, this immaculate maintained Hanse 400 epoxy is in a better than new condition. With a heavy heart the owner wants to sell this more than complete Hanse 400 epoxy. Now ready to be admired and to be inspected 7 days a week in our sales harbour in Hindeloopen.

Johan Nooitgedagt

SPECIFICATIONS

Dimensions	12.10 x 4.04 x 1.98 (m)	Builder	Hanse Yachts GmbH
Built	2006	Cabins	3
Material	Epoxy and foam core	Berths	7
Engine(s)	1 x Yanmar 3JH4E diesel	Hp/Kw	40.00 (hp), 29.40 (kw)
Asking price	sold (VAT)	Lying	at sales office

CONTACT

Sales office	De Valk Hindeloopen	Telephone	+31 514 52 40 00
Address	Oosterstrand 1 8713 JS Hindeloopen The Netherlands	E-mail	hindeloopen@devalk.nl

DISCLAIMER

These particulars are given in good faith as supplied but cannot be guaranteed.



HANSE 400E

GENERAL

Model	HANSE 400E
Type	sailing yacht
LOA (m)	12,10
LWL (m)	10,80
Beam (m)	4,04
Draft (m)	1,98
Air draft (m)	19,52
Headroom (m)	1,98
Year built	2006
Builder	Hanse Yachts GmbH
Country	Germany
Designer	Judel / Vrolijk & Co
Displacement (t)	8
Ballast (tonnes)	cast iron and lead 2.9
CE norm	A
Hull material	epoxy and foam core
Hull shape	round-bilged
Keel type	fin keel
Superstructure material	GRP
Deck material	GRP
Deck finish	non-skid moulded in
Cockpit deck finish	teak
Antifouling (year)	2020
Window frame	aluminium
Window material	polycarbonate
Deckhatch	2x
Portholes	aluminium
Fuel tank (litre)	stainless steel Approx. 140 ltr.
Level indicator (fuel tank)	yes
Freshwater tank (litre)	polyethylene Approx. 300 ltr.



Blackwater tank (litre)	polyethylene
Blackwater tank extraction	deck extraction + uw line
Wheel steering	mechanical Jefa
Emergency tiller	yes
More info on hull	Hull newly painted 2019
Extra info	Extra cleats amidships Harken deck hardware

ACCOMMODATION

Cabins	3
Berths	7
Interior	mahogany
Floor	teak and holly
Open cockpit	yes
Saloon	yes
Headroom saloon (m)	1.98 - 2.00 mtr.
Heating	Webasto Airtop 5000
Chart table	yes
Aft Cabin	yes
Galley	L-shaped worktops
Countertop	corian
Sink	stainless steel
Cooker	calor gas Eno 2 burner
Oven	In cooker
Fridge	Isotherm 12 volt
Hot water system	220V + engine Isotherm
Water pressure system	electrical
Owners cabin	double bed
Bed length (m)	2 mtr. / Slatted base and Neptune mattress - 2014
Wardrobe	hanging/drawers/shelves
Guest cabin 1	double bed
Bed length (m)	2 mtr. / Slatted base and Neptune mattress - 2014



Wardrobe	hanging
Guest cabin 2	double bed
Bed length (m)	2 mtr.
Wardrobe	hanging
Bathroom	shared
Toilet	Jabsco - new 2020
Toilet system	manual
Wash basin	
Shower	

MACHINERY

No of engines	1
Make	Yanmar
Type	3JH4E
HP	40
kW	29,40
Fuel	diesel
Year installed	2006
Maximum speed (kn)	8
Cruising speed (kn)	6
Consumption (l/hr)	2,5
Engine hours	Hours counter defect
Engine cooling system	freshwater heat exchanger
Drive	sail-drive
Saildrive seal	New August 2019
Engine controls	bowden cable
Gearbox	mechanical
Bowthruster	electric 2018 Duoprop
Exhaust	watercooled
Propeller type	folding
Propeller blades	3



Manual bilge pump	yes
Electric bilge pump	yes
Electrical installation	12 / 220 V
Start battery	New 2020 - 80Ah
Service battery	New 2018 - 2x 140Ah Bosch
Battery charger	Pro Charge Ultra 12V-30a
Inverter	Victron Energy Phoenix Inverter Compact 12volt/1200
Shorepower	with cable

NAVIGATION

Compass	Plastimo offshore 105
Depth sounder/log	2017 Raymarine multifunctionele i70s
Windset	2017 Raymarine I60
VHF	Icom IC-M505 with two horns
Autopilot	2016 Raymarine control P70
Plotter	Geonav 7 wide (stand alone)
Plotter/GPS	2020 Raymarine Aixom
Navtex	Clipper navtex (not working no antenna connected)
Electronic chart(s)	NL-ENG / Baltic Sea
AIS transceiver	Raymarine AIS650

EQUIPMENT

Sprayhood	yes
Sprayhood with grab rail	2014 - Petrol Gray
Cockpit cover	2014 - petrol grey
Cockpit cushions	yes
Cockpit table	yes
Bathing platform	yes
Boarding ladder	stainless steel
Deck shower	Hot and Cold
Anchor	Bruce Stainless steel



Anchor chain	yes
Deck wash	yes
Outboard support	yes
Sea railing	wire
Grab rail (superstructure)	teak
Railing side opening gates	yes
Pushpit	yes
Pulpit	yes
Safety lines on deck	yes
Fenders	yes
Mooring lines	yes
TV	yes
TV receiver	yes
Radio-cd player	Pioneer
DVD player	yes
Cockpit speakers	yes
Speakers in salon	yes
Clock - barometer	yes
Fire extinguisher	yes

RIGGING

Rigging	sloop
Standing rigging	wire
Brand mast	Sparcraft
Material mast	aluminium
Spreaders	2 pair
Mainsail	2018 De Vries Sails - 49.63 m ² - Cruising Offshore
Mainsail cover	2014 grey
Battcars	yes
Fully battened mainsail	yes
Jib	self-tacking jib 2015 De Vries Sails 36.2 m ² - Cruising Offshore



Genoa	2007 140% High Perf 51m2 Flex Pentex Cruising, UK de Vries
Genoa furler	Facnor
Genoa cover	yes
Gennaker	with Seldén furler Momentum Sails
Spinnaker	with Spicon Opti-radial, O.9 OZ, De Vries, 137 m2, 2007
Self tacking jib installation	yes
Reefing System	quick-one-line-reefing
Backstay adjuster	tackle
Boomvang	mechanical
Primary sheet winch	2 x Harken 46AST
Halyard winches	2 x Harken 40AST
Spi-pole	carbon Seldén
Gennaker pole	Stainless steel
Extra info	Running rigging all dynema
Extra info	Dutchman mainsail storing system



HANSE 400E



HANSE 400E



HANSE 400E



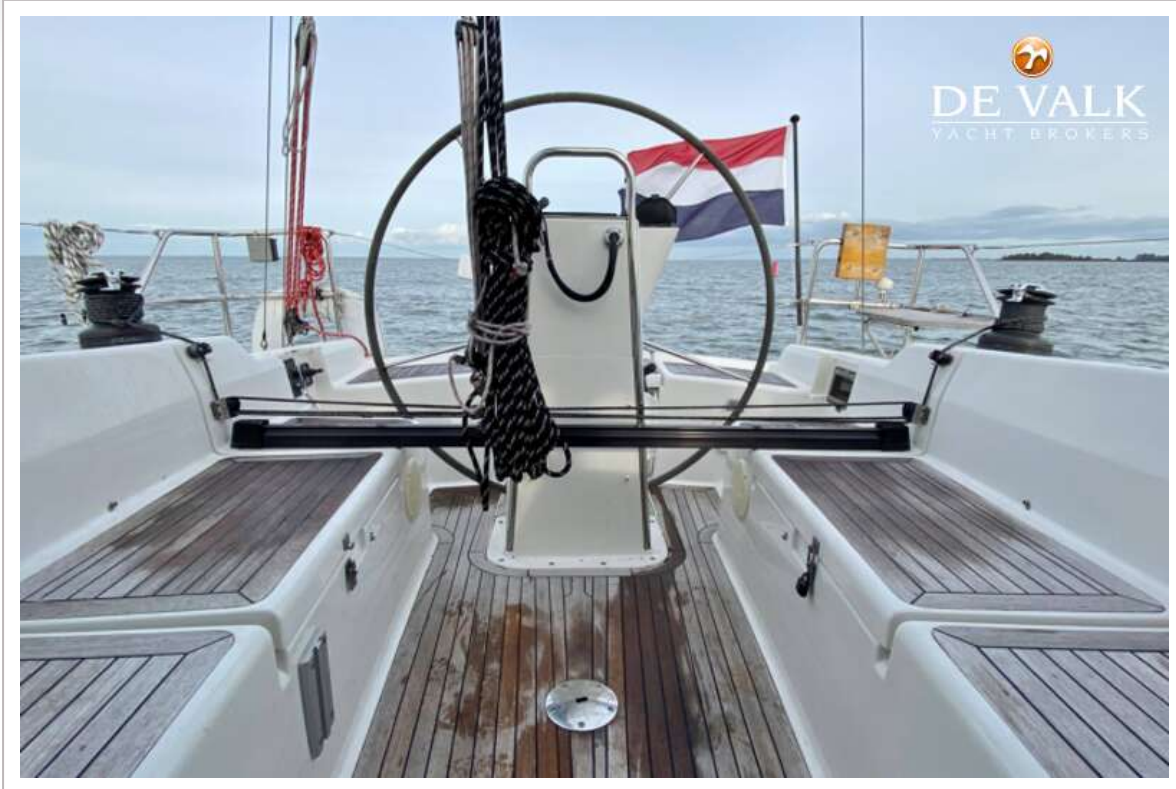
HANSE 400E



HANSE 400E



HANSE 400E



HANSE 400E



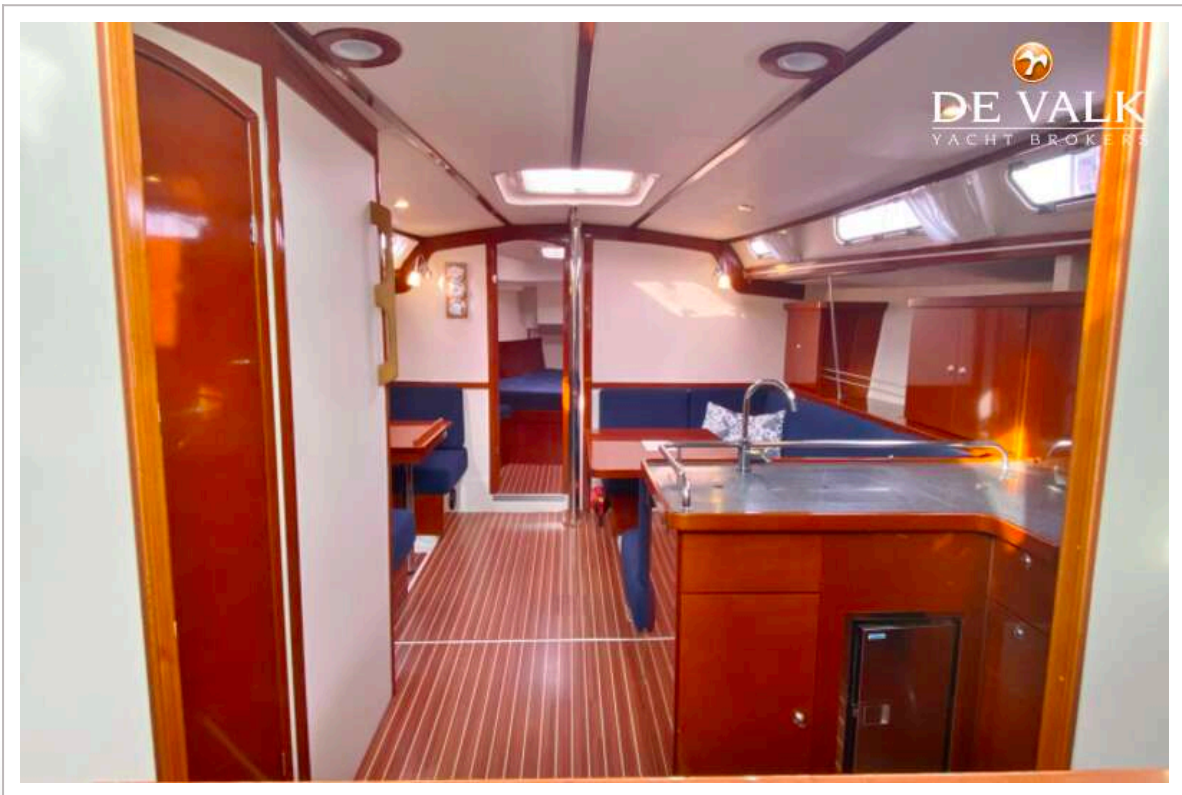
HANSE 400E



HANSE 400E



HANSE 400E



HANSE 400E



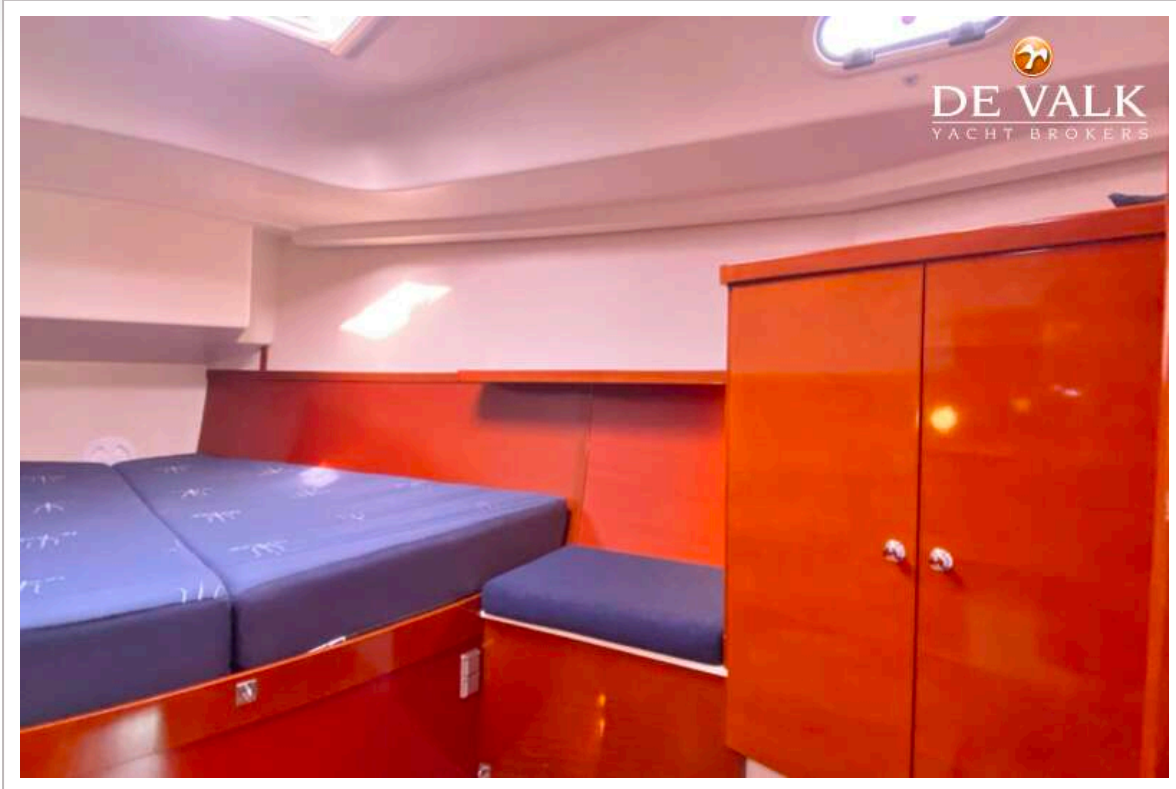
HANSE 400E



HANSE 400E



HANSE 400E



HANSE 400E



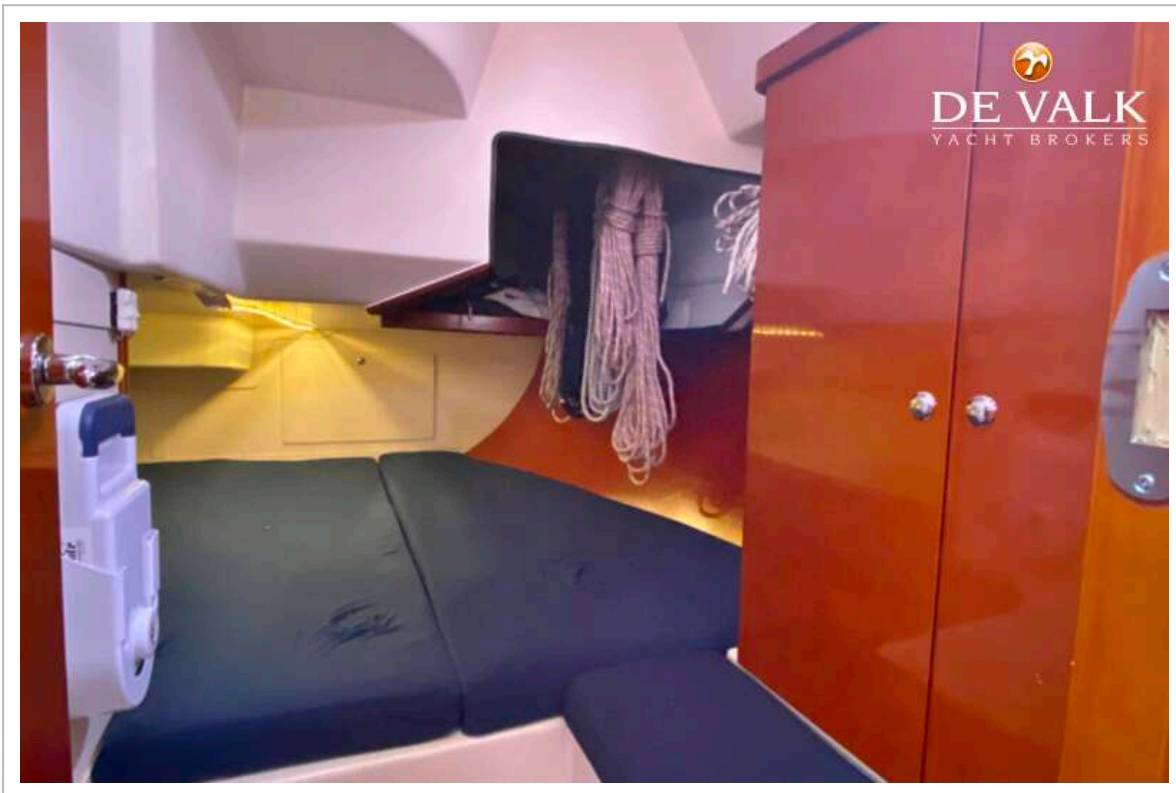
HANSE 400E



HANSE 400E



HANSE 400E



HANSE 400E

