



DK 46 RACER/CRUISER

# DK 46 RACER/CRUISER

## BROKER'S COMMENTS

This fast and successful yacht, designed by Mills Design and built by DK yachts is known for her performance. This hull #9, was professional cruised, raced and taken care for by 15 'Mädels', They have done the circuit around and now it is time to hand over the wheel. Due to her design and layout she is suitable for both cruising and racing; hull is optimized for racing and the interior is spacious and comfortable, with minor investments she can be rebuild/upgraded as a fast family cruiser. She comes with a container full of sails and gear. Very well maintained and ready for her next adventure.

*Hartmut Ross*

## SPECIFICATIONS

<b>Dimensions</b>	14.10 x 4.10 x 2.90 (m)	<b>Builder</b>	DK Yachts
<b>Built</b>	2005	<b>Cabins</b>	3
<b>Material</b>	Epoxy and foam core	<b>Berths</b>	8
<b>Engine(s)</b>	1 x Volvo Penta D2 diesel	<b>Hp/Kw</b>	40.00 (hp), 29.44 (kw)
<b>Asking price</b>	sold (VAT )	<b>Lying</b>	elsewhere / Not at sales office

## CONTACT

<b>Sales office</b>	De Valk Kiel	<b>Telephone</b>	+49 1712312133
<b>Address</b>	Hermann Rennerstrasse 12 22609 Hamburg DE	<b>E-mail</b>	kiel@devalk.nl

## DISCLAIMER

These particulars are given in good faith as supplied but cannot be guaranteed.



## GENERAL

Model	DK 46 RACER/CRUISER
Type	sailing yacht
LOA (m)	14,10
LWL (m)	12,10
Beam (m)	4,10
Draft (m)	2,90
Air draft (m)	23,10
Headroom (m)	1,95
Year built	2005
Builder	DK Yachts
Country	Malaysia
Designer	Mills Design
Displacement (t)	8,3
Ballast (tonnes)	lead 4,3
CE norm	A
Hull material	epoxy and foam core
Hull colour	grey
Hull shape	round-bilged
Keel type	fin keel with bulb
Superstructure material	epoxy and foam core
Deck material	epoxy and foam core
Deck finish	non-skid moulded in
Superstructure deck finish	non-skid moulded in
Cockpit deck finish	non-skid moulded in
Antifouling (year)	2021
Window frame	aluminium
Window material	polycarbonate
Deckhatch	5x Lewmar
Fuel tank (litre)	150 ltr.
Level indicator (fuel tank)	yes



Freshwater tank (litre)	300 ltr. in two tanks
Blackwater tank (litre)	Yes
Wheel steering	chain steering 2x carbon + cover
Emergency tiller	yes
Extra info	Boat is sold including cradle and trailer

## ACCOMMODATION

Cabins	3
Berths	8
Floor	wood
Saloon	yes
Headroom saloon (m)	1,95 mtr.
Navigation center	+ Navigation kit
Chart table	yes
Aft Cabin	2x
Galley	yes
Countertop	corian
Sink	Double
Cooker	calor gas 2 burner
Oven	In cooker
Owners cabin	v-bed
Bed length (m)	2 mtr.
Wardrobe	hanging and shelves
Bathroom	shared
Toilet	Jabsco
Toilet system	yes
Wash basin	yes
Guest cabin 1	double bed + single bed Aft cabin
Bed length (m)	2 mtr.
Wardrobe	hanging and shelves
Guest cabin 2	double bed + single bed Aft cabin



Bed length (m)	2 mtr.
Wardrobe	hanging and shelves
Extra info	- Dehumidifier (electric)

## MACHINERY

No of engines	1
Make	Volvo Penta
Type	D2
HP	40
kW	29.44
Fuel	diesel
Year installed	2015
Maximum speed (kn)	22
Cruising speed (kn)	7
Engine hours	Approx. 880
Engine cooling system	freshwater heat exchanger
Drive	sail-drive
Engine controls	yes
Exhaust	watercooled
Propeller type	folding
Propeller blades	2
Manual bilge pump	yes
Electric bilge pump	yes
Electrical installation	12 / 220 Volt
Start battery	S-Power 95Ah
Service battery	120Ah
Battery charger	Pro Charge Ultra - 12V-40a
Shorepower	with cable

## NAVIGATION

Compass	- Hand bearing compass Plastimo - 2x Suunto on each pedestal
---------	--



Depth sounder	Nexus NXR Multi Control
Repeater	3x Nexus NX2 Multi XL display's
VHF handheld	Icom
Autopilot	yes
Plotter/GPS	Raymarine Hybrid touch e7
AIS transponder	CTRX Graphene AIS klasse B transponder
EPIRB	ACR

## EQUIPMENT

Gangway	Wood
Anchor	Large heavy anchor with chain and line
Anchor 2	Alu-Anchor with chain
Sea railing	yes
Pushpit	yes
Pulpit	yes
Life raft	container Canister Transocean
Life raft (pers)	6
Safety lines on deck	+ Lifelines
Horn	Yes
Binocular	Bynolyt
Fenders	- 6x black - 2x Air fender blue - Air pump for air fenders
Fire extinguisher	2x
Extra info	- Drift anchor - Safety ladder - plastimo

## RIGGING

Rigging	Fractional Sloop
Standing rigging	PBO rigging
Brand mast	Formula Masts UK Ltd
Material mast	carbon
Spreaders	2 pair - sweptback composite spreaders
Keel stepped mast	+ Hydraulic pump for mast - Enerpac



# DK 46 RACER/CRUISER

<b>Mainsail</b>	- 2014 - North Sails 3DL - 2018 - North Sails 3DL Endurance
<b>Mainsail cover</b>	North Sails
<b>Battcars</b>	yes
<b>Genoa</b>	- 2016 / North Sails 3DL Medium heavy - 2018 / North Sails Light Medium 3Di-raw
<b>Code Zero</b>	- 2016 North Sails Code B
<b>Gennaker</b>	- 2005 - North Sails A3
<b>Spinnaker</b>	- 2013 / North Sails S3 - 2019 / North Sails S2 - 2012 / North Sails S2 (training)
<b>Stormjib</b>	- Quantum (training) - Quantum
<b>Backstay adjuster</b>	hydraulic
<b>Boomvang</b>	hydraulic On carbon boom
<b>Primary sheet winch</b>	2x Harken 48
<b>Genoa sheetwinches</b>	2x Harken 530 Top-Cleating Racing Winch - 3 Speed
<b>Halyard winches</b>	2x Harken 45
<b>Spi-pole</b>	carbon
<b>Jockey-pole</b>	carbon
<b>Extra info</b>	- Box Spare Shackles & Blocks - Wooden plugs - Box + bag sail repair
<b>Extra info</b>	- 4x winch handle doublehand long - 4x winch handle long - 3x winch handle short





## DK 46 RACER/CRUISER





## DK 46 RACER/CRUISER



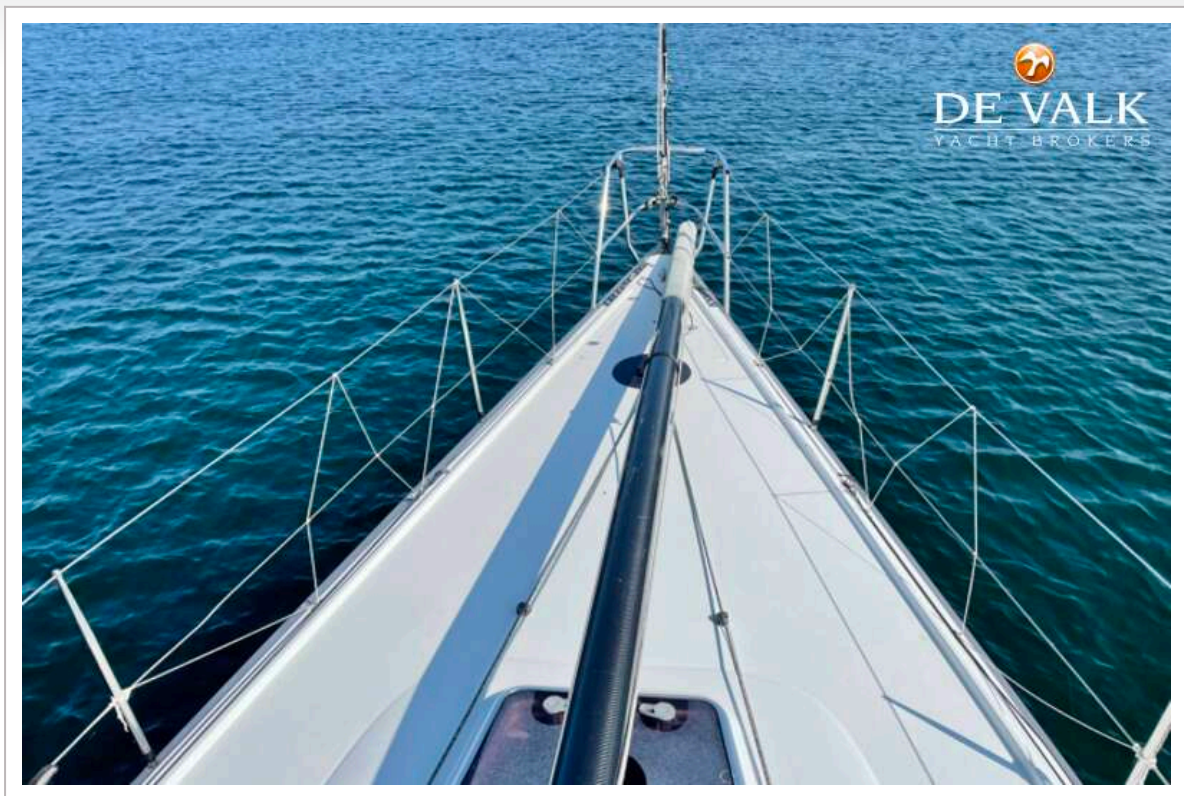


## DK 46 RACER/CRUISER



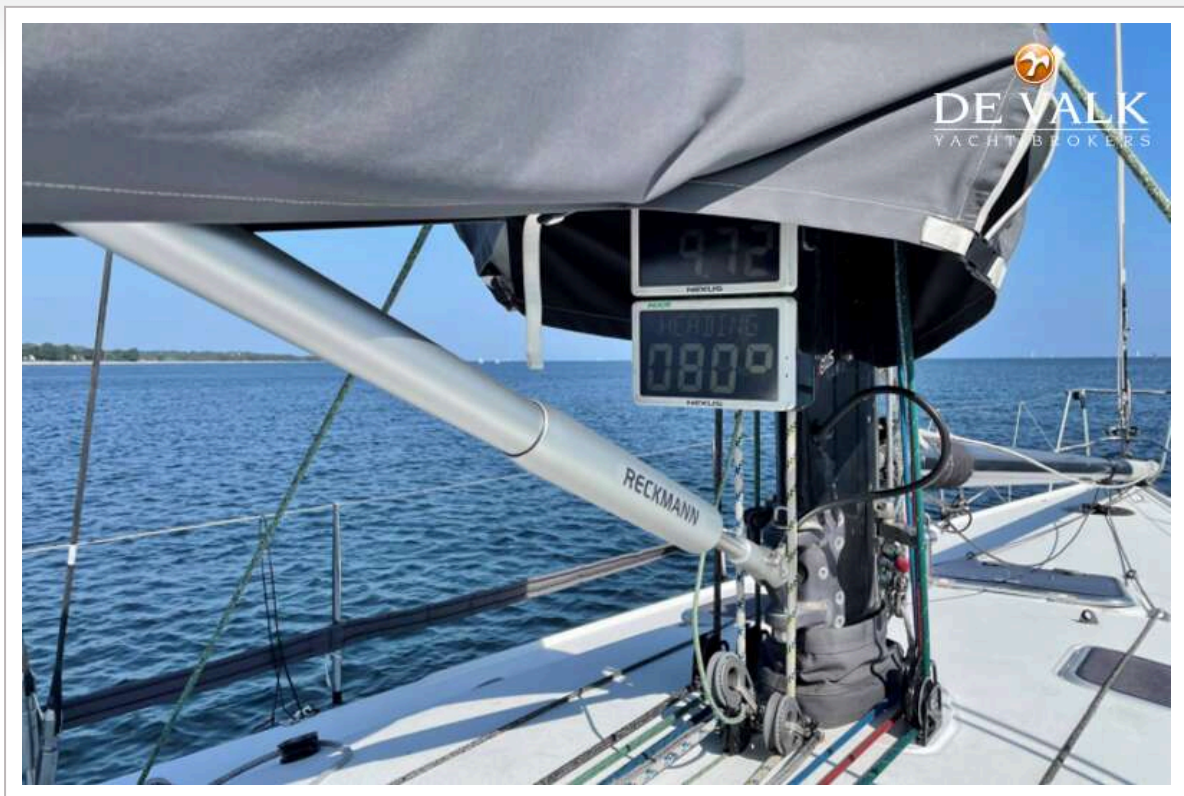


## DK 46 RACER/CRUISER



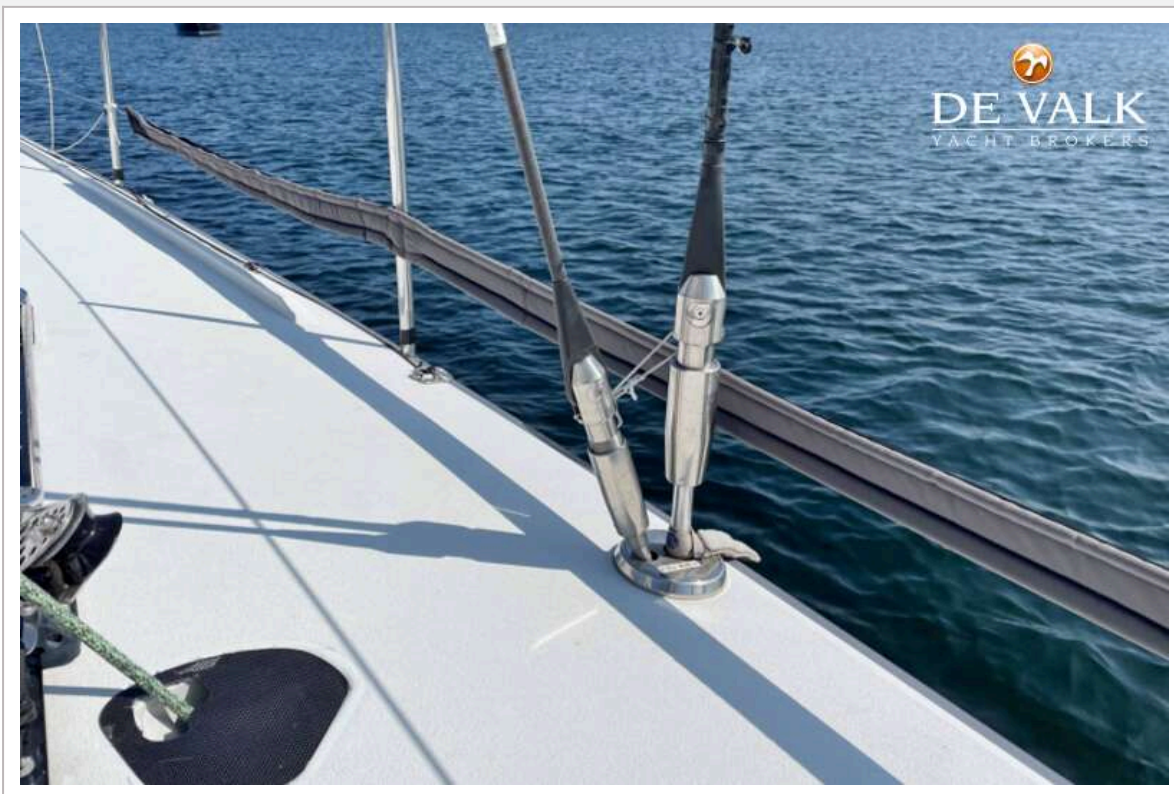


## DK 46 RACER/CRUISER

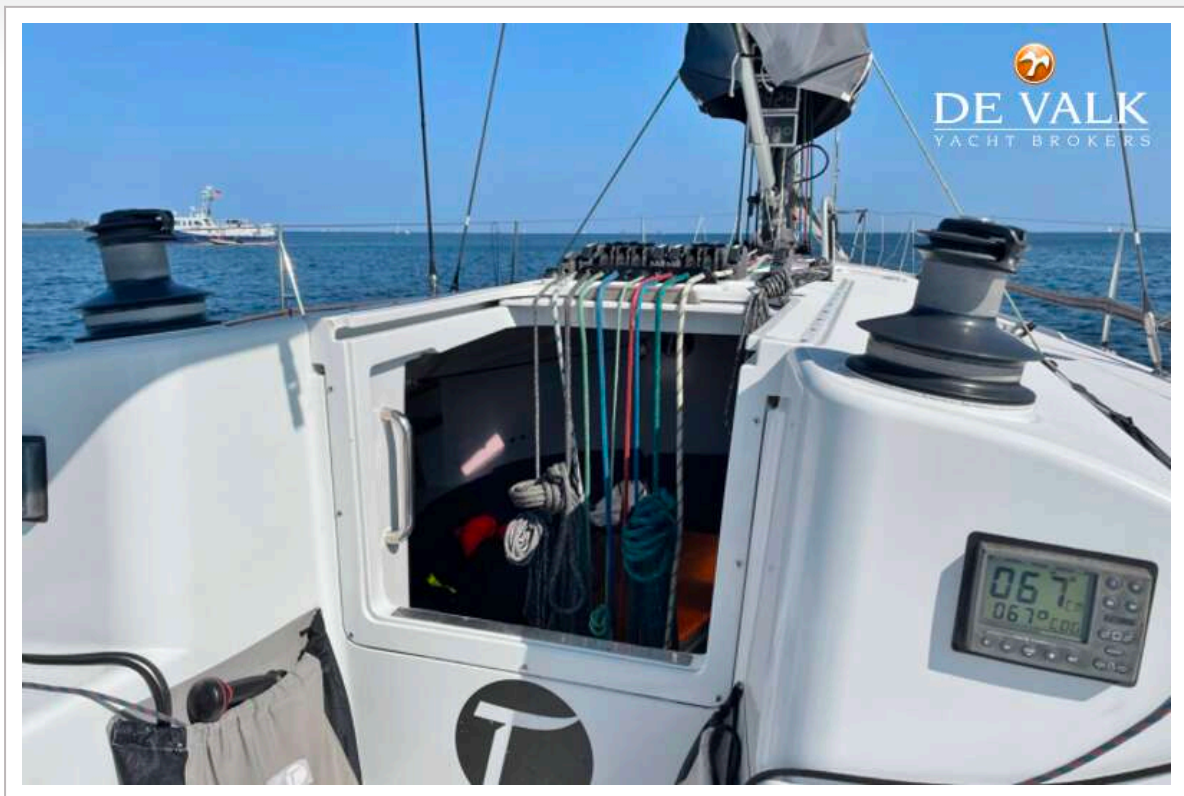




## DK 46 RACER/CRUISER



## DK 46 RACER/CRUISER





## DK 46 RACER/CRUISER



## DK 46 RACER/CRUISER

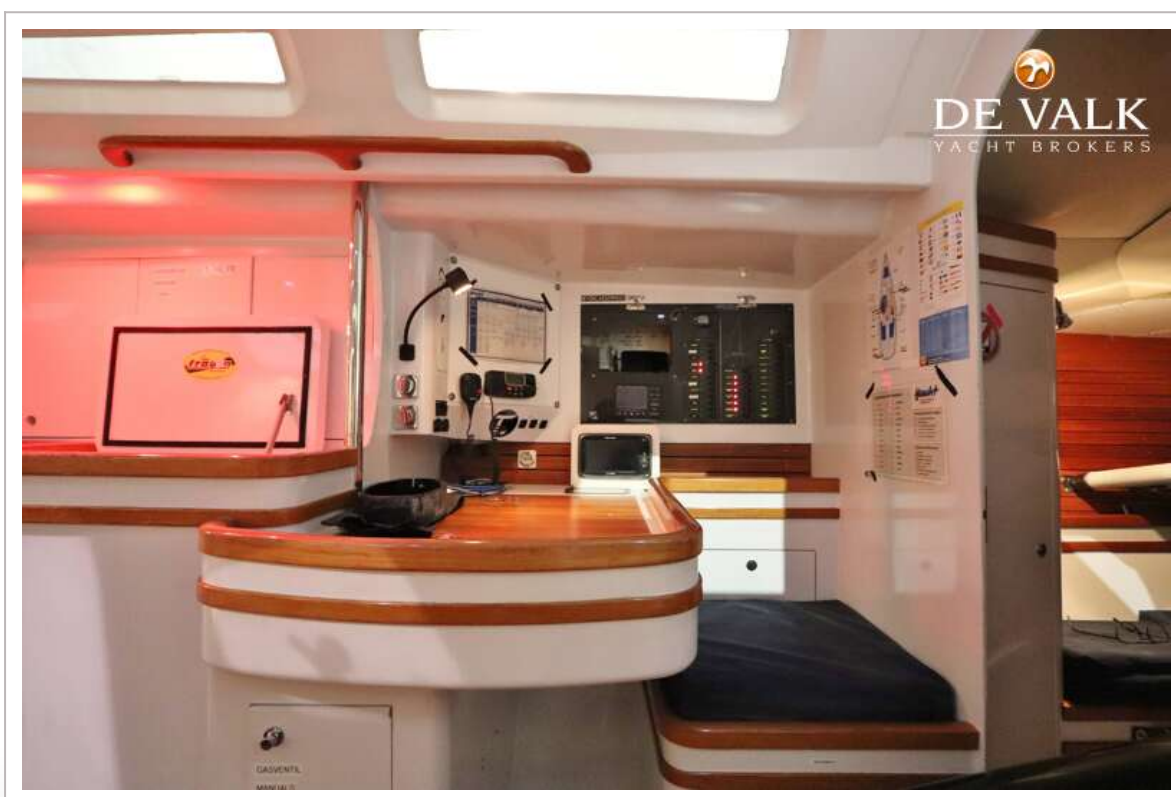
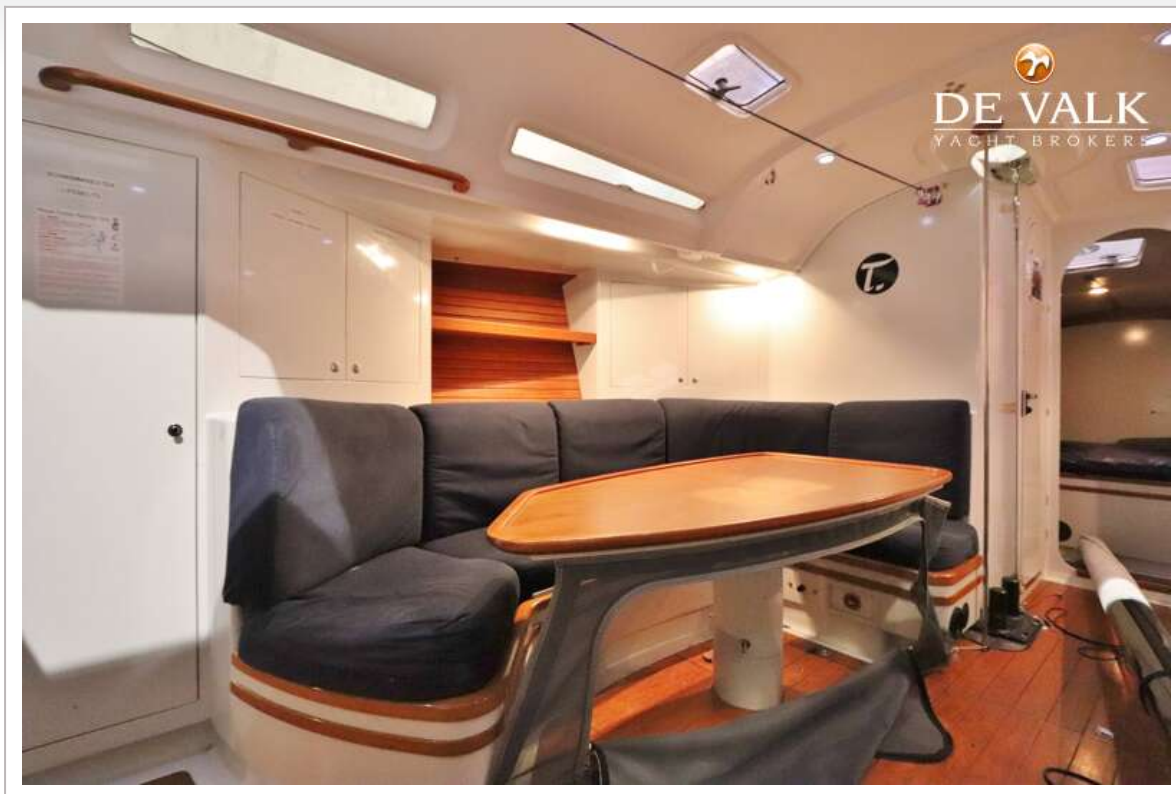




## DK 46 RACER/CRUISER

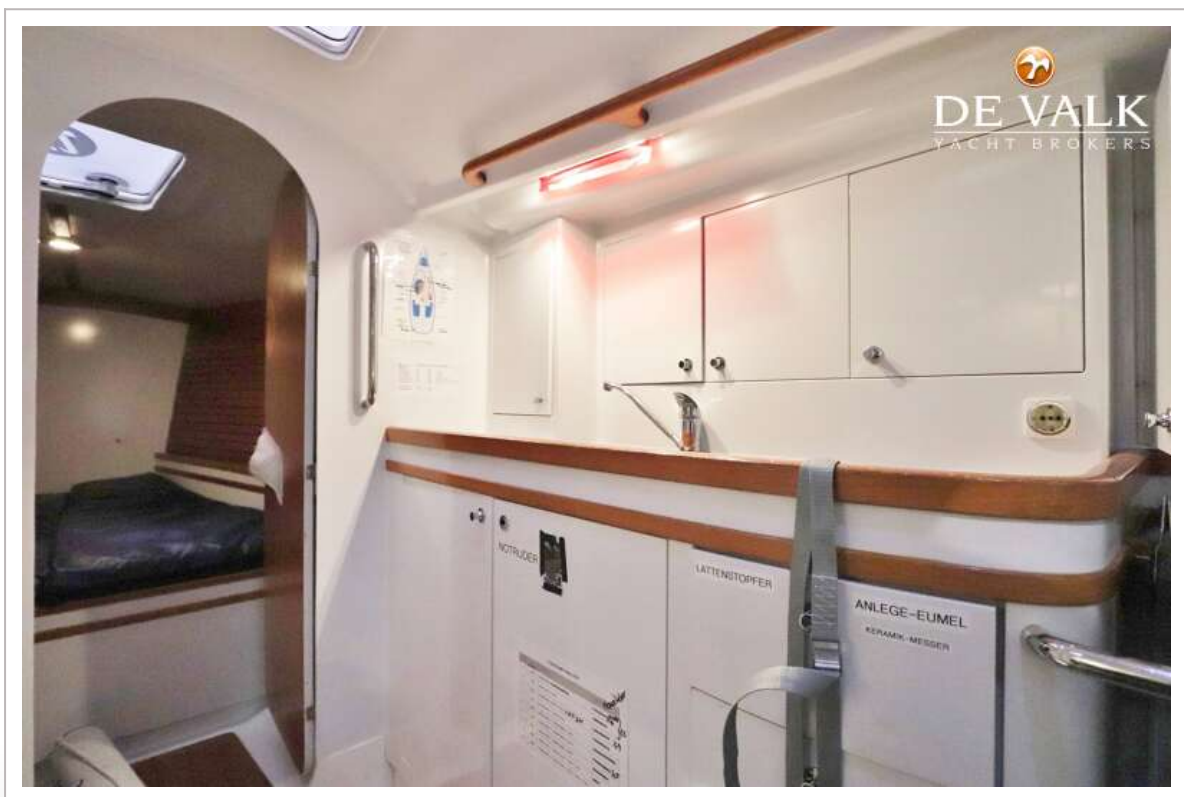
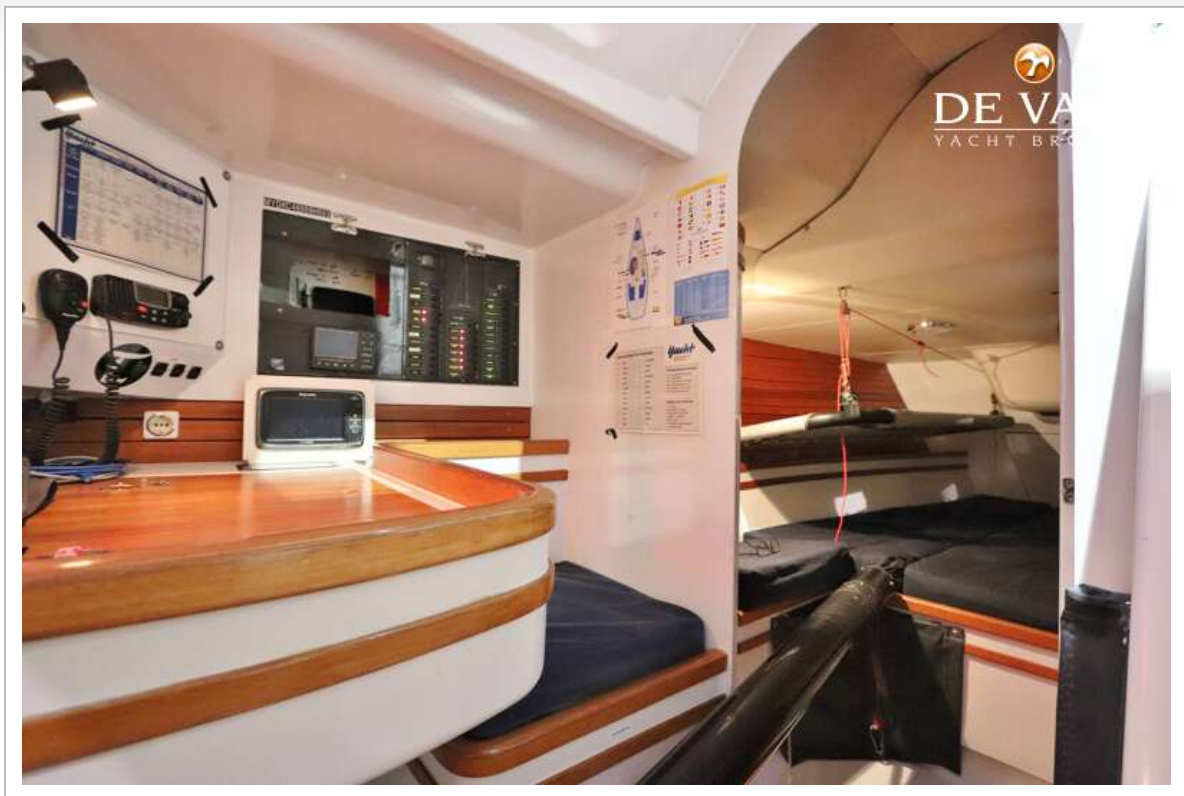


## DK 46 RACER/CRUISER

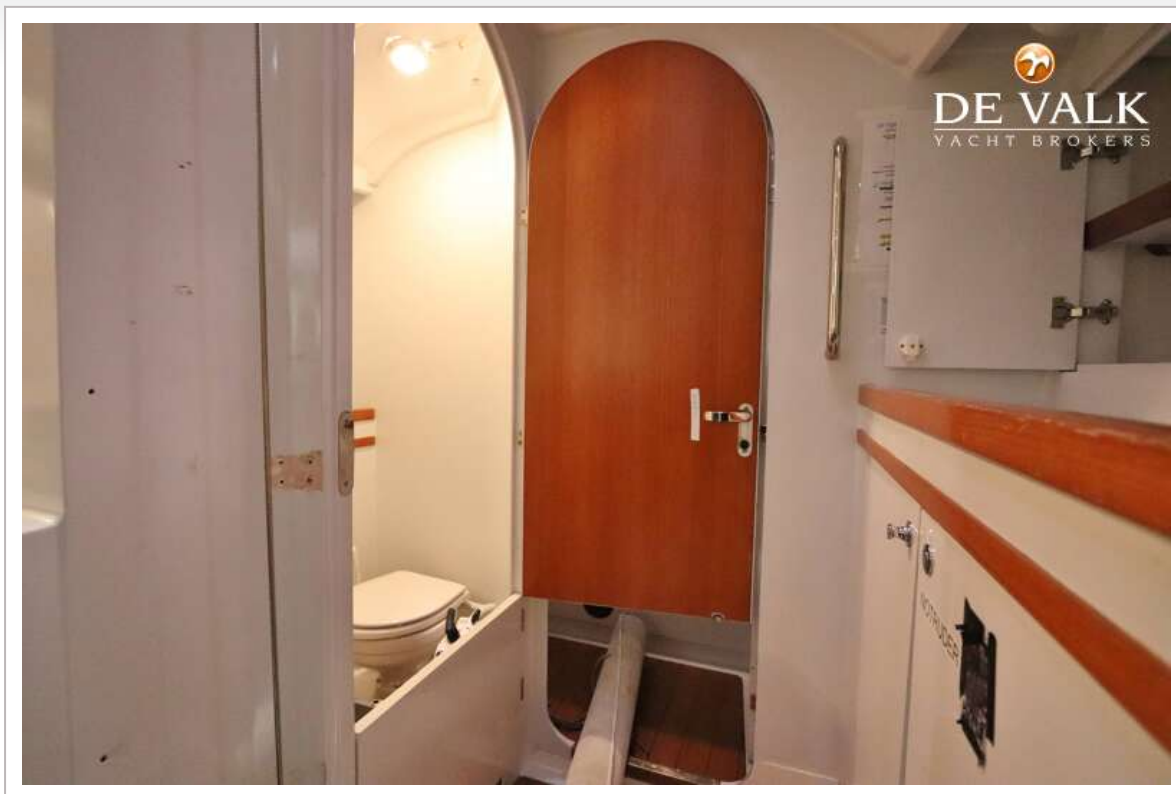




## DK 46 RACER/CRUISER



## DK 46 RACER/CRUISER





## DK 46 RACER/CRUISER



## DK 46 RACER/CRUISER



## DK 46 RACER/CRUISER





## DK 46 RACER/CRUISER



## DK 46 RACER/CRUISER

