



OCEAN STAR 51.2

OCEAN STAR 51.2

BROKER'S COMMENTS

This beautiful Ocean Star 51.2 with an owners version layout, maintained to the highest standards, is now for sale. The woodwork is solid and nicely finished all around. This Ocean Star 51.2 has a spacious owners cabin with island bed and ensuite bathroom. There are two guest cabins with shared bathroom. The galley has plenty of workspace with Corian counter top, four burner cooker, a large chest freezer and front opening fridge. The "crew cabin" in the front is converted into a facility cabin with washing machine. The yacht is lying in Greece and can be visited after making an appointment.

Henk Sijbranda

SPECIFICATIONS

Dimensions	15.56 x 4.58 x 2.00 (m)	Builder	Ocean Star S.A.
Built	2008	Cabins	3
Material	GRP	Berths	6
Engine(s)	1 x Yanmar 4JH4HTE diesel	Hp/Kw	110.00 (hp), 80.85 (kw)
Asking price	sold (VAT)	Lying	elsewhere / Not at sales office

CONTACT

Sales office	De Valk Hindeloopen B.V.	Telephone	+31 514 52 40 00
Address	Oosterstrand 1 8713 JS Hindeloopen NL	E-mail	hindeloopen@devalk.nl

DISCLAIMER

These particulars are given in good faith as supplied but cannot be guaranteed.



GENERAL

Model	OCEAN STAR 51.2
Type	sailing yacht
LOA (m)	15,56
Beam (m)	4,58
Draft (m)	2,00
Headroom (m)	2,00
Year built	2008
Builder	Ocean Star S.A.
Country	Greece
Displacement (t)	16
CE norm	A
Hull material	GRP
Hull colour	blue
Hull shape	round-bilged
Keel type	fin keel with bulb
Superstructure material	GRP
Deck material	GRP
Deck finish	teak
Superstructure deck finish	non-skid moulded in & teak
Cockpit deck finish	teak
Antifouling (year)	2019
Dorades	2x
Window frame	aluminium
Window material	tempered glass
Deckhatch	9x Goiot
Fuel tank (litre)	stainless steel 460 ltr.
Level indicator (fuel tank)	yes
Freshwater tank (litre)	stainless steel 3 tanks total 960
Level indicator (freshwater)	yes
Blackwater tank (litre)	polyethylene



Level indicator (blackwater)	yes
Blackwater tank extraction	pump
Wheel steering	cable steering 2 wheels
Emergency tiller	yes

ACCOMMODATION

Cabins	3
Berths	6
Interior	cherry
Floor	teak and holly
Open cockpit	yes
Saloon	yes
Headroom saloon (m)	2
Heating	electric 220V Webasto bluecool classic
Air-conditioning	reverse cycle airco Webasto Blue cool classic
Navigation center	yes
Chart table	yes
Aft Cabin	2x
Dining room	yes
Galley	yes
Countertop	corian
Sink	stainless steel Double
Cooker	calor gas 4 burner - Eno
Oven	In cooker
Microwave	Rohnson
Fridge	Isotherm
Freezer	Frigoboat
Hot water system	220V + engine
Water pressure system	electrical
Manual and/or foot pump	yes
Owners cabin	French bed



Bed length (m)	1,95 x 1.40
Wardrobe	hanging/drawers/shelves
Bathroom	en suite
Toilet	EcoVac
Toilet system	vacuum
Wash basin	Corian
Shower	
Guest cabin 1	double bed
Bed length (m)	2,10 x 1.30
Wardrobe	hanging and shelves
Guest cabin 2	double bed
Bed length (m)	2,10 x 1.30
Wardrobe	hanging and shelves
Bathroom	shared
Toilet	EcoVac
Toilet system	vacuum
Wash basin	Corian
Shower	
Washing machine	Soba Babynova 1180 Rapid
Ironing facilities	Near galley

MACHINERY

No of engines	1
Make	Yanmar
Type	4JH4HTE
HP	110
kW	80,85
Fuel	diesel
Engine hours	1844
Engine cooling system	freshwater heat exchanger
Drive	shaft



Engine controls	bowden cable
Gearbox	mechanical New in 2014
Bowthruster	electric Vetus 95 kgf
Exhaust	watercooled
Propeller type	fixed
Propeller blades	3
Propeller shaft material	stainless steel
Shaft lubrication	water
Manual bilge pump	yes
Electric bilge pump	yes
Bilge alarm	yes
Electrical installation	12 / 220 V
Generator	silent separator Mastervolt whisper 8
Start battery	1x 120Amp maintenance free
Service battery	3x 180Amp maintenance free
Generator battery	Varta 74Ah
Bowthruster battery	Optima
Battery monitor	Mastervolt Charger control
Battery charger/inverter	Mastervolt Mass combi 12/2000 - 100
Solar panel	Solar World - 320Wp
Shorepower	with cable
Extra info	Turbo overhaul and cooling system cleaned in 2018

NAVIGATION

Compass	2x Plastimo Olympic 135
Depth sounder	Raymarine ST60+ Depth
Depth sounder/log	Raymarine ST60+ Tridata
Log	Raymarine ST60+ Speed
Windset	2x ST60+ Wind
Repeater	Raymarine ST60+ Tridata
VHF	has its own battery and monitor (+ alarm) Raymarine Ray215E



Autopilot	Raymarine ST6002
Radar	Raymarine
Radar/GPS/plotter	2x Raymarine E80
Electronic chart(s)	yes
EPIRB	Simrad
Navigation lights	yes

EQUIPMENT

Sprayhood	New 2018
Bimini	2018
Cockpit cushions	yes
Cockpit table	Teak
Bathing platform	yes
Boarding ladder	stainless steel
Gangway	yes
Deck shower	Warm and cold
Anchor	Bruce
Anchor chain	80 mtr.
Windlass	electrical Quick
Capstan	yes
Dinghy	inflatable
Outboard	yes
Outboard support	yes
Sea railing	
Grab rail (superstructure)	teak
Railing side opening gates	yes
Pushpit	yes
Pulpit	yes
Life raft	valise (or bag)
Last life raft survey	2019
Safety lines on deck	yes



Radar reflector	yes
Fenders	yes
Mooring lines	yes
Spare parts	yes
Tools	yes
Radio-cd player	Pioneer
Cockpit speakers	yes
Speakers in salon	yes
Fire extinguisher	3x
Latest extinguisher survey	2019

RIGGING

Rigging	sloop
Standing rigging	wire
Brand mast	Sparcraft
Material mast	aluminium
Spreaders	2 pair
Mainsail	2018
Stoway mast	yes
Genoa	2007 - well maintained
Genoa furler	Facnor
Reefing System	main in-mast furling
Backstay adjuster	tackle
Boomvang	gasspring
Primary sheet winch	2x Harken 44 / 2 speed
Genoa sheetwinches	2x Harken 60 / 2 speed
Halyard winches	1x Harken 44 / 2 speed
Spi-pole	aluminium



OCEAN STAR 51.2



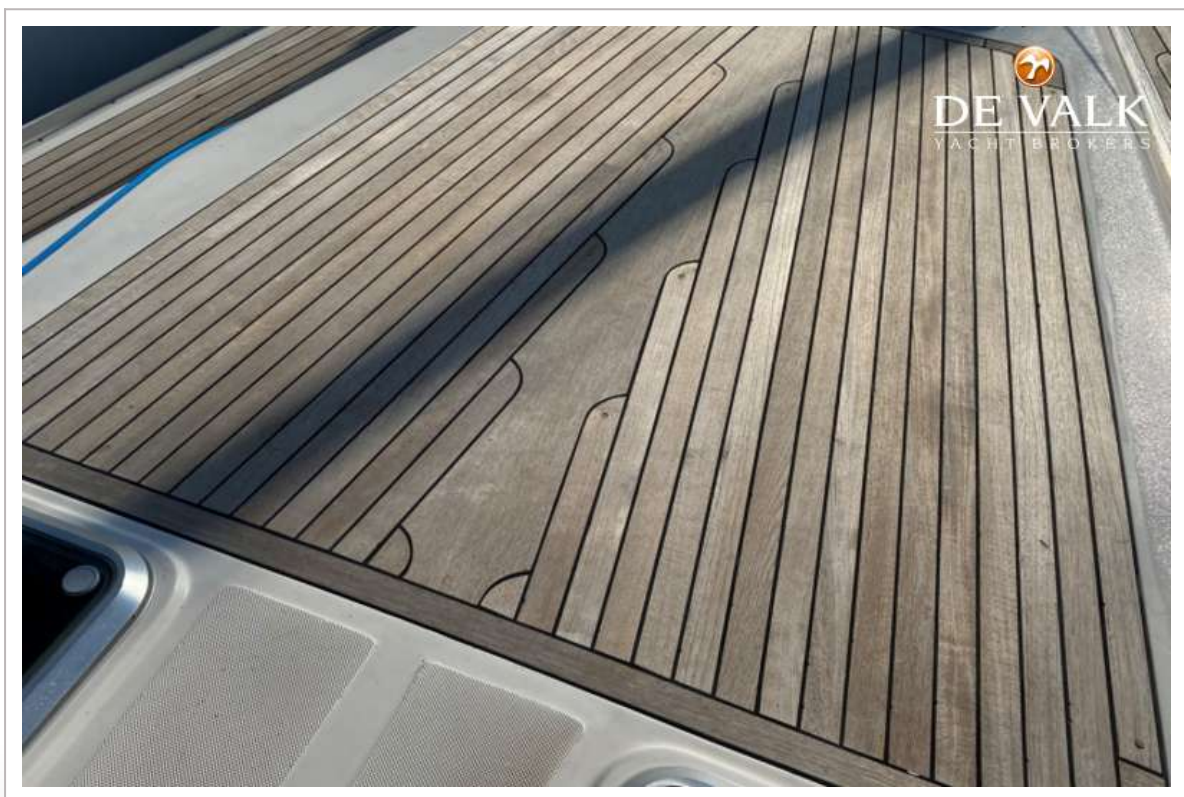
OCEAN STAR 51.2



OCEAN STAR 51.2



OCEAN STAR 51.2



OCEAN STAR 51.2



OCEAN STAR 51.2



OCEAN STAR 51.2



OCEAN STAR 51.2



OCEAN STAR 51.2



OCEAN STAR 51.2



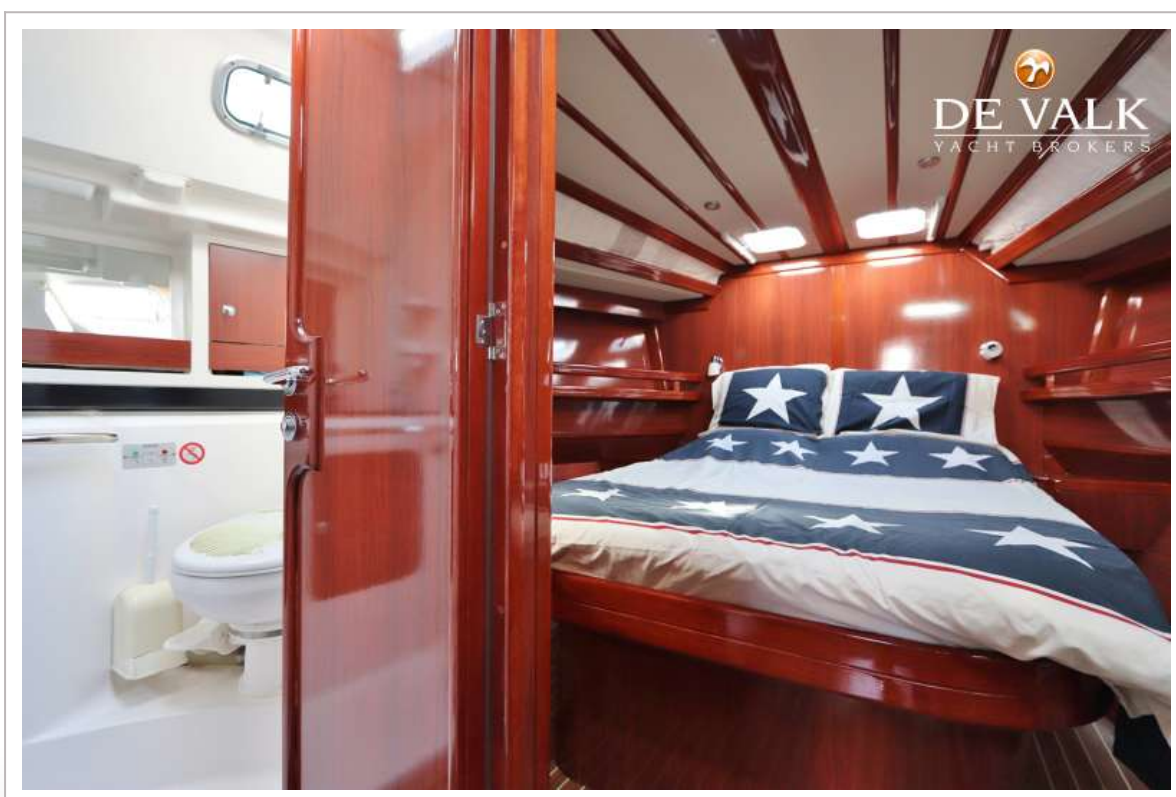
OCEAN STAR 51.2



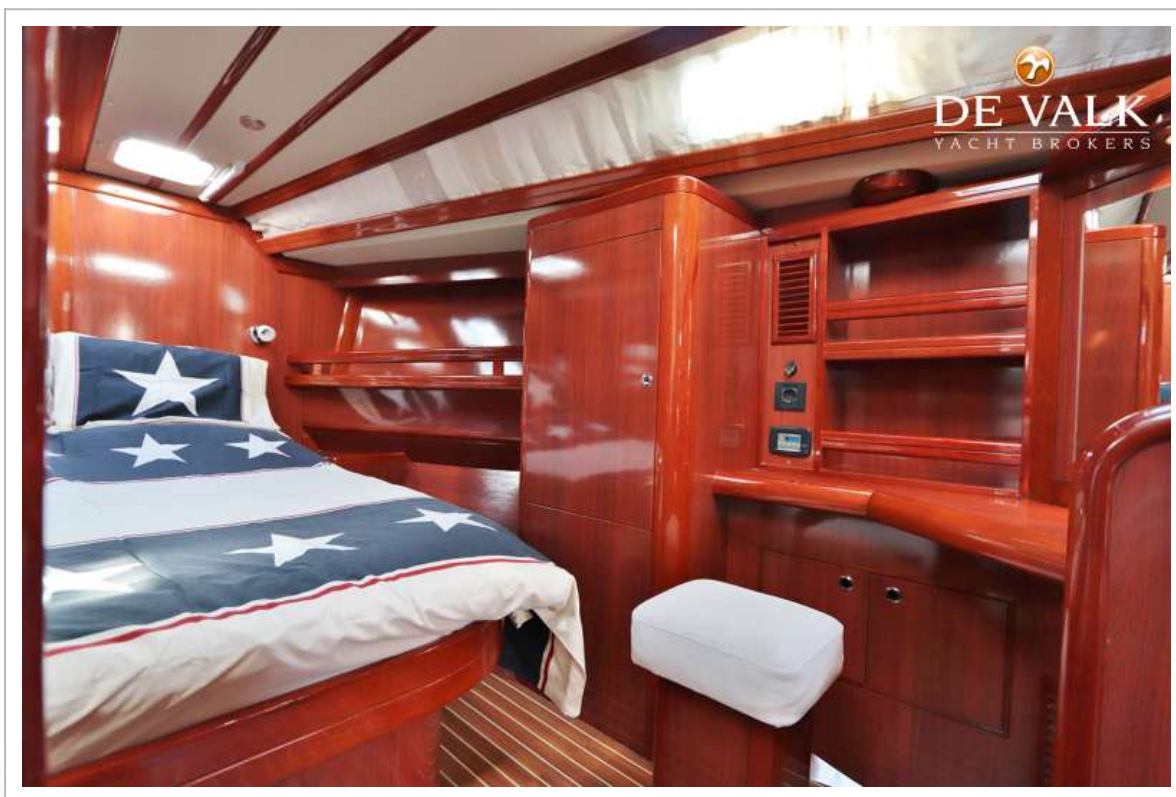
OCEAN STAR 51.2



OCEAN STAR 51.2



OCEAN STAR 51.2



OCEAN STAR 51.2



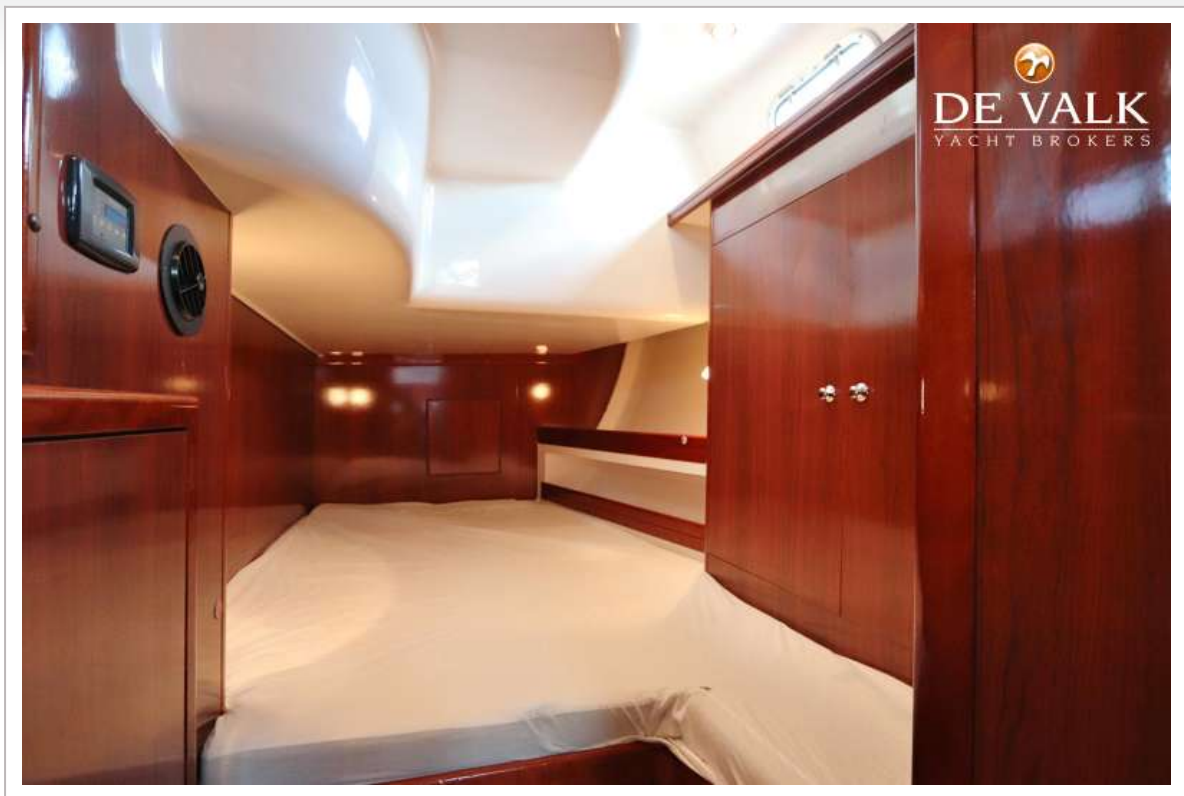
OCEAN STAR 51.2



OCEAN STAR 51.2



OCEAN STAR 51.2



OCEAN STAR 51.2

