



DE VALK
YACHT BROKERS



HANSE 630E



DE VALK
YACHT BROKERS

BROKER'S COMMENTS

This Hanse 630 built in epoxy is a great yacht in different ways, she is fully equipped, a treat for the eye with her straight lines and beautiful just painted hull Professionally maintained and privately used. Both inside and outside she is a "Truly Modern". To be seen in the Netherlands in covered storage.

Ger Bayens

SPECIFICATIONS

Dimensions	19.00 x 5.20 x 2.95 (m)	Builder	Hanse yachts
Built	2009	Cabins	3
Material	GRP	Berths	6
Engine(s)	1 x Yanmar 4LHA-HTTP diesel	Hp/Kw	160.00 (hp), 117.60 (kw)
Asking price	sold (VAT)	Lying	at sales office

CONTACT

Sales office	De Valk Sint Annaland	Telephone	+31 166 601 000
Address	Koelhuisweg 4 4697 RM Sint Annaland The Netherlands	E-mail	sintannaland@devalk.nl

DISCLAIMER

These particulars are given in good faith as supplied but cannot be guaranteed.



GENERAL

Model	HANSE 630E
Type	sailing yacht
LOA (m)	19,00
LWL (m)	17,10
Beam (m)	5,20
Draft (m)	2,95
Air draft (m)	31,10
Headroom (m)	2,10
Year built	2009
Builder	Hanse yachts
Country	Germany
Designer	Judel Vrolijk & Co
Displacement (t)	24
Ballast (tonnes)	8,9
CE norm	A
Hull material	GRP
Hull colour	Awlgrip Sand
Hull shape	roundbilged
Keel type	bulb keel Composit iron/lead (T-shaped)
Superstructure material	GRP Carbon fibre reinforcements
Deck material	GRP Carbon fibre reinforcements
Deck finish	teak
Superstructure deck finish	teak
Cockpit deck finish	teak
Antifouling (year)	2016
Window material	perspex
Portholes	10
Fuel tank (litre)	stainless steel Ca. 600
Level indicator (fuel tank)	yes
Freshwater tank (litre)	stainless steel 1100



Level indicator (freshwater)	yes
Blackwater tank (litre)	yes
Blackwater tank extraction	deck extraction
Wheel steering	Twin, covered with leather
Emergency tiller	yes
More info on hull	Hull built with prepreg fibreglass fabrics in epoxy, vacuum cured with Corecell™ foam postcured. - Carbon fibre chain plates - Epoxy E-glass strong back with UD reinforcements - Waterline and cove line laid in the gelcoat - Opening transom with hydraulic, remote control - Dinghy storage in the aft compartment - Deck prepreg fibreglass fabrics in epoxy, vacuum cured with Corecell™ foam, postcured - Thermal and sound insulated - Deck white - Carbon fibre reinforcements
More info on paintwork	Recent Awlgrip Paintjob 2016

ACCOMMODATION

Cabins	3
Berths	6
Crew cabin	In front
Interior	mahogany
Floor	Maple styled squares
Headroom saloon (m)	2,10
Heating	
Air-conditioning	reverse cycle airco
Navigation center	yes
Chart table	with storage
Aft Cabin	2 x Version D1
Dining room	Dining area with chill out zone
Galley	eparated with stand alone bar
Countertop	corian Black quartz
Sink	stainless steel Double
Cooker	calor gas 3-burner
Fridge	130 ltr. top and front loader + 1 in cockpit



Freezer	Ca. 80 L, front loader
Hot water system	220V + engine 40 L
Water pressure system	electrical
Waste compactor	yes
Owners cabin	french bed Version C1
Wardrobe	hanging and drawers
Bathroom	en suite
Toilet	en suite
Toilet system	electric
Wash basin	yes
Shower	en suite
Guest cabin 1	twin single Version D1
Wardrobe	hanging/drawers/shelves
Bathroom	yes
Toilet	en suite
Toilet system	manual
Wash basin	in the bathroom
Shower	en suite
Guest cabin 2	twin single
Wardrobe	yes
Bathroom	en suite
Toilet	en suite
Toilet system	manual
Wash basin	in the bathroom
Shower	en suite
Crew cabin(s)	yes
Washing machine	Miele
Dryer	Miele
Extra info	separate desk with seat

MACHINERY



No of engines	1
Make	Yanmar
Type	4LHA-HTTP
HP	160,00
kW	117,60
Fuel	diesel
Year installed	2009
Engine cooling system	freshwater heat exchanger
Drive	shaft
Engine controls	At staboard wheel
Bowthruster	Maxprop, retracable
Sternthruster	Maxprop, retractable
Propeller type	folding
Propeller blades	3
Propeller shaft material	stainless steel
Manual bilge pump	yes
Electric bilge pump	2 x
Electrical installation	12V, 24V and 220V
Generator	Fischer Panda 10,2KW
Batteries	AGM
Start battery	12v/80ah
Service battery	24V/400ah
Battery monitor	Philippi
Battery charger	24V / 100 Amp
Inverter	Victron 230V 3 KW
Shorepower	with cable

NAVIGATION

Compass	yes
Depth sounder	yes
Log	yes



Windset	yes
Repeater	yes
VHF	yes
Autopilot	yes
Rudder angle indicator	yes
Radar/GPS/plotter	yes
Electronis chart(s)	yes
AIS receiver	yes
Radio receiver	yes
Extra info	Simrad Glassbridge navigation package

EQUIPMENT

Sprayhood	yes
Bimini	yes
Cockpit cushions	yes
Cockpit table	yes
Cockpit chairs	yes
Bathing platform	Hydraulic opening transom with remote control
Boarding ladder	stainless steel
Gangway	Riviera Hydrolic
Deck shower	Hot & cold
Anchor	yes
Anchor chain	60 m
Windlass	electrical
Pushpit	yes
Pulpit	yes
TV	on lift mechanism
TV receiver	IRDTO
Satellite	Seatel Coastel 24 (Med)
iPod connection	yes
Surround Sound System	yes



Cockpit speakers	yes
Speakers in salon	yes

RIGGING

Rigging	sloop
Standing rigging	Rod
Material mast	New paint jop mast & boom 2015
Spreaders	3 pairs
Keel stepped mast	yes
Mainsail	North Sails ca. 120 m ²
Mainsail cover	Lazy bag with lazy jacks
Battcars	Harken
Fully battened mainsail	North sails spectra laminate
Jib	North Sails Spectra ca. 81,91 m ²
Genoa furler	Electric, below deck
Gennaker	North Sails G2 Maxilite ca. 286 m ² with snuffer
Self tacking jib installation	yes
Reefing System	
Backstay adjuster	hydraulic
Boomvang	hydraulic
Primary sheet winch	2 x 65 AEST (24V)
Secondary sheet winch	2 x 54 AST
Halyard winches	electric 2 extra Lewmar 54
Isolated backstay	yes



HANSE 630E



HANSE 630E



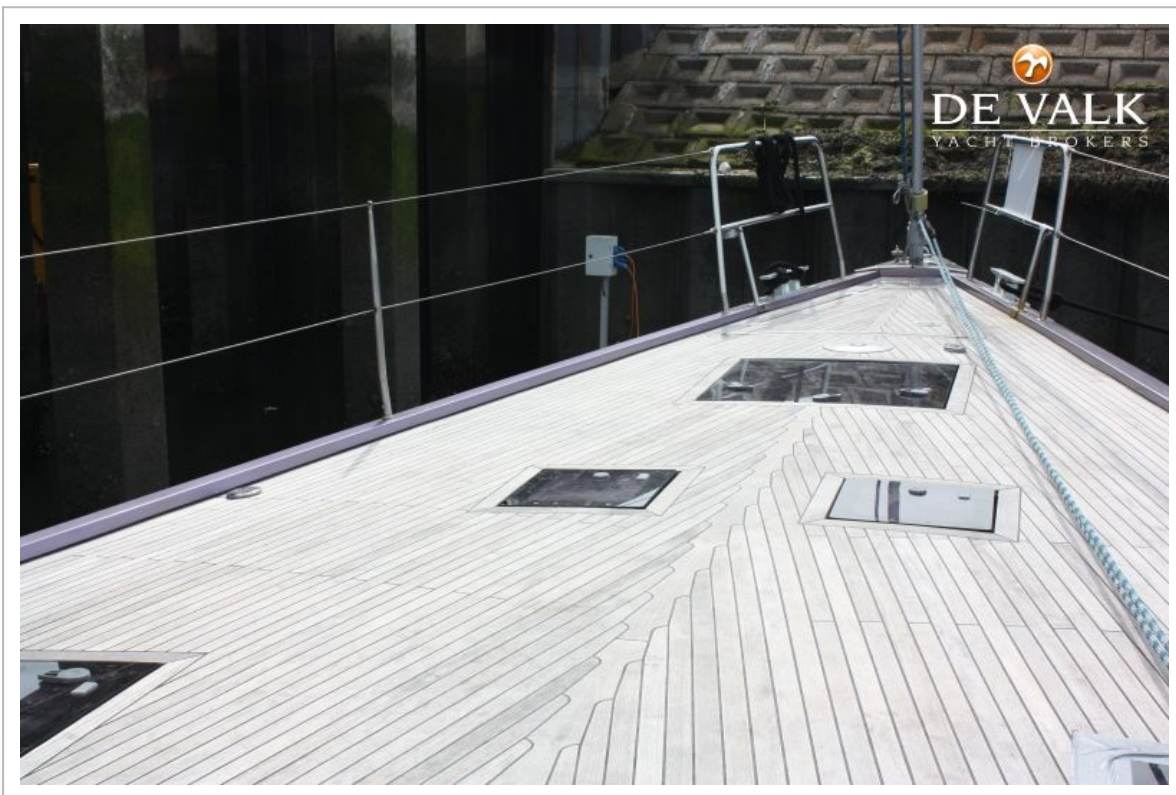
HANSE 630E



HANSE 630E



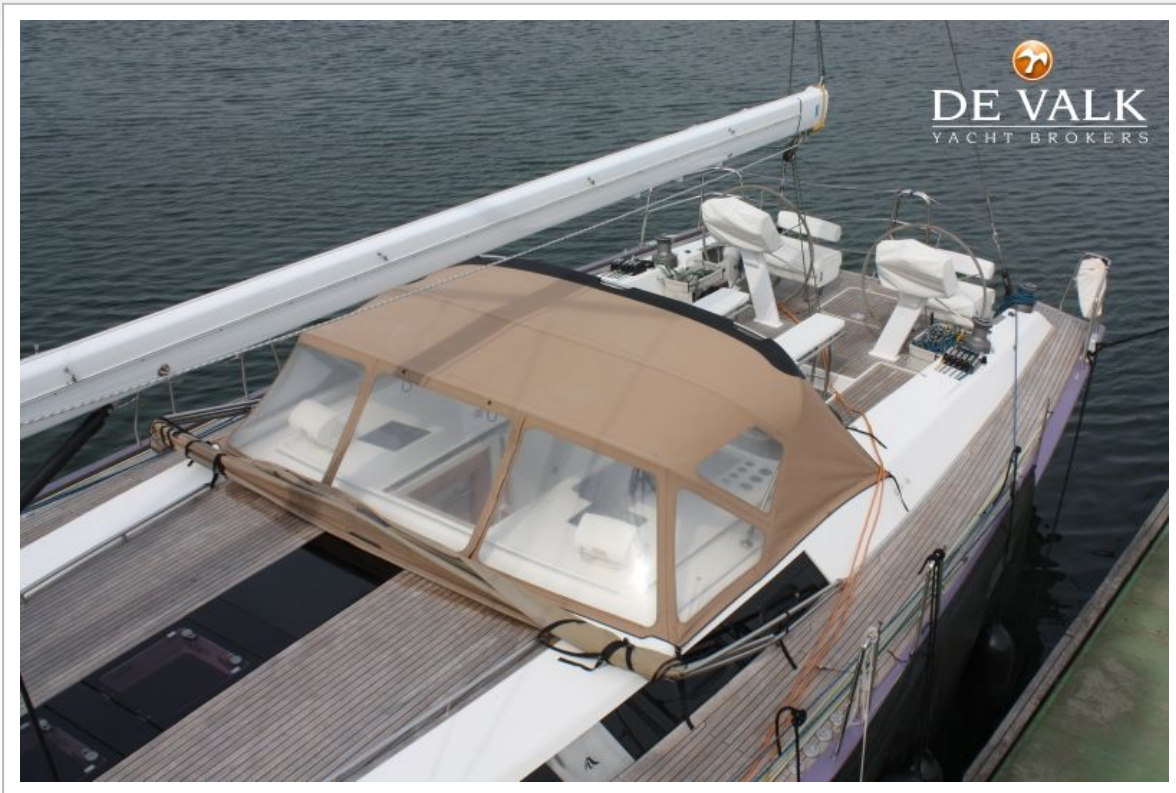
HANSE 630E



HANSE 630E



HANSE 630E



HANSE 630E



HANSE 630E



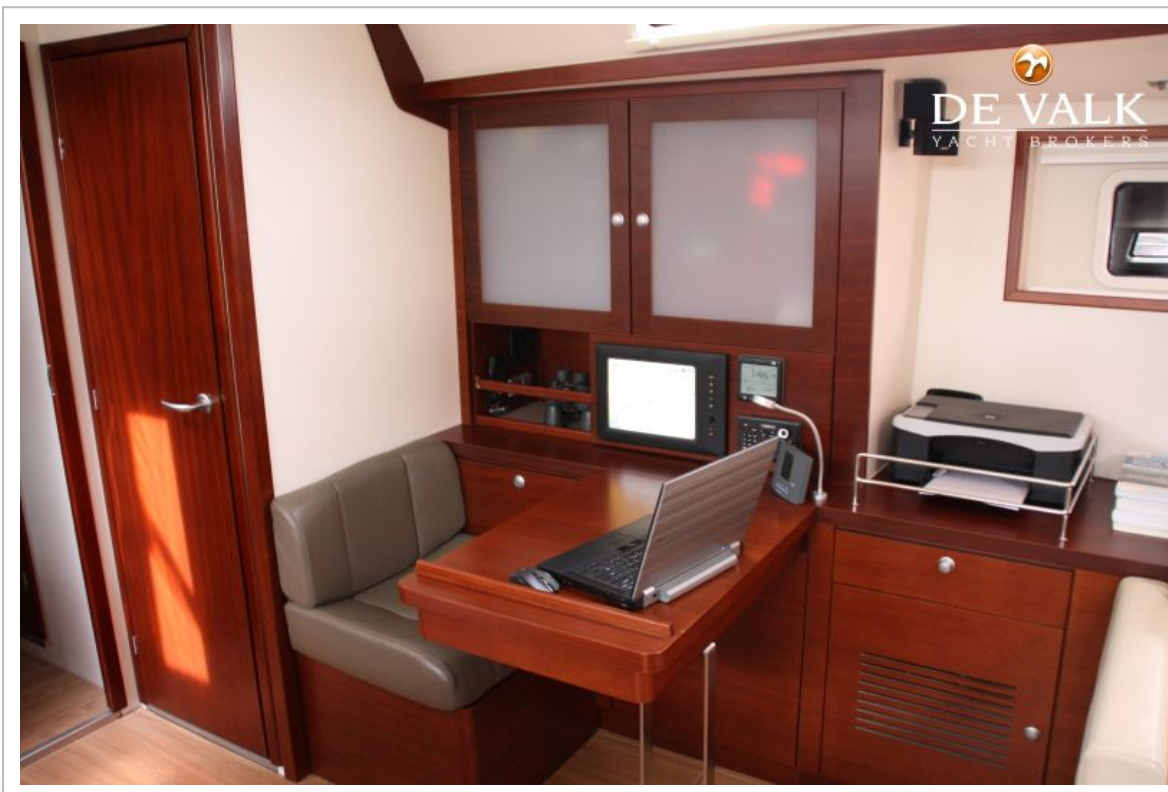
HANSE 630E



HANSE 630E



HANSE 630E



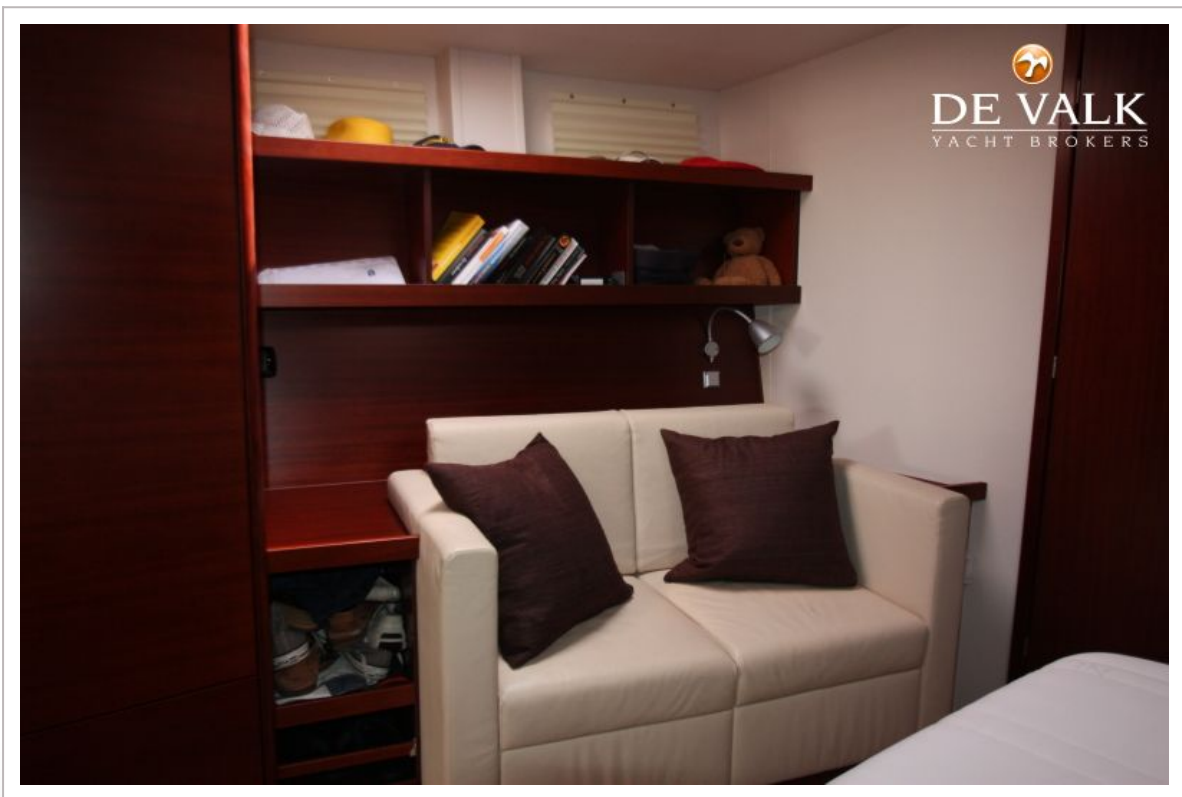
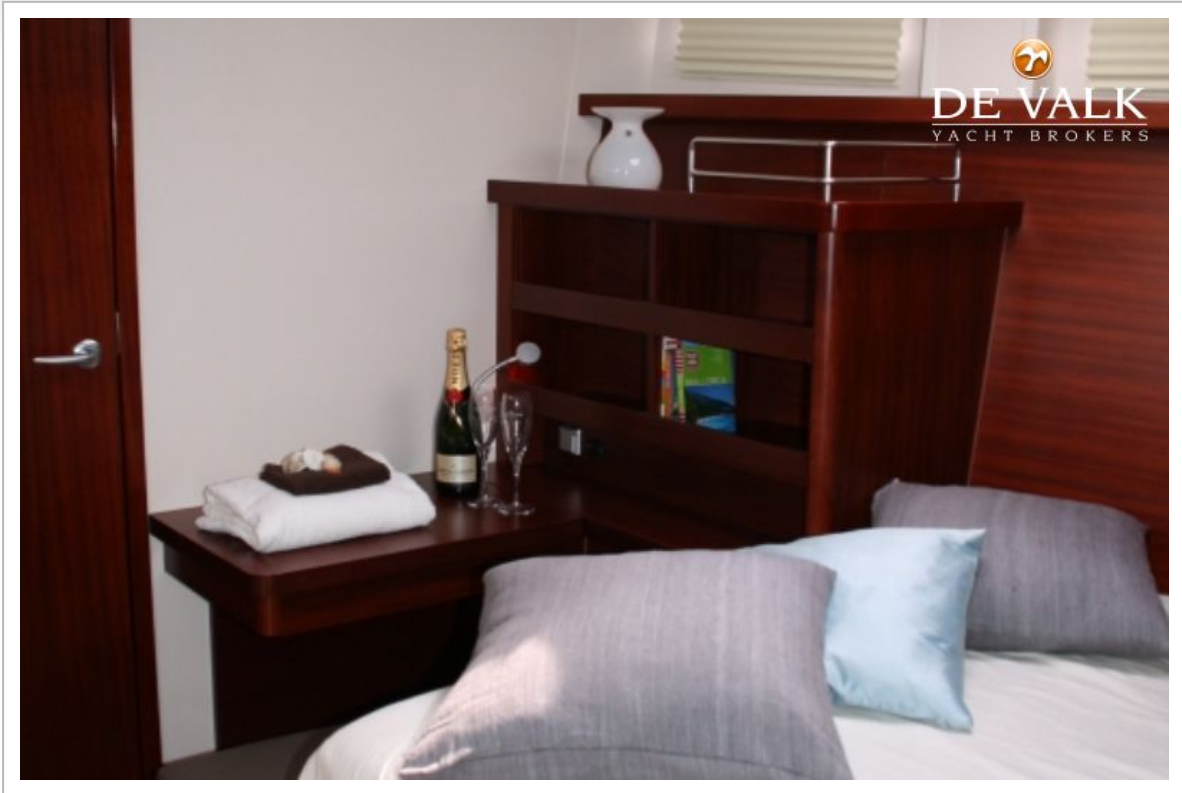
HANSE 630E



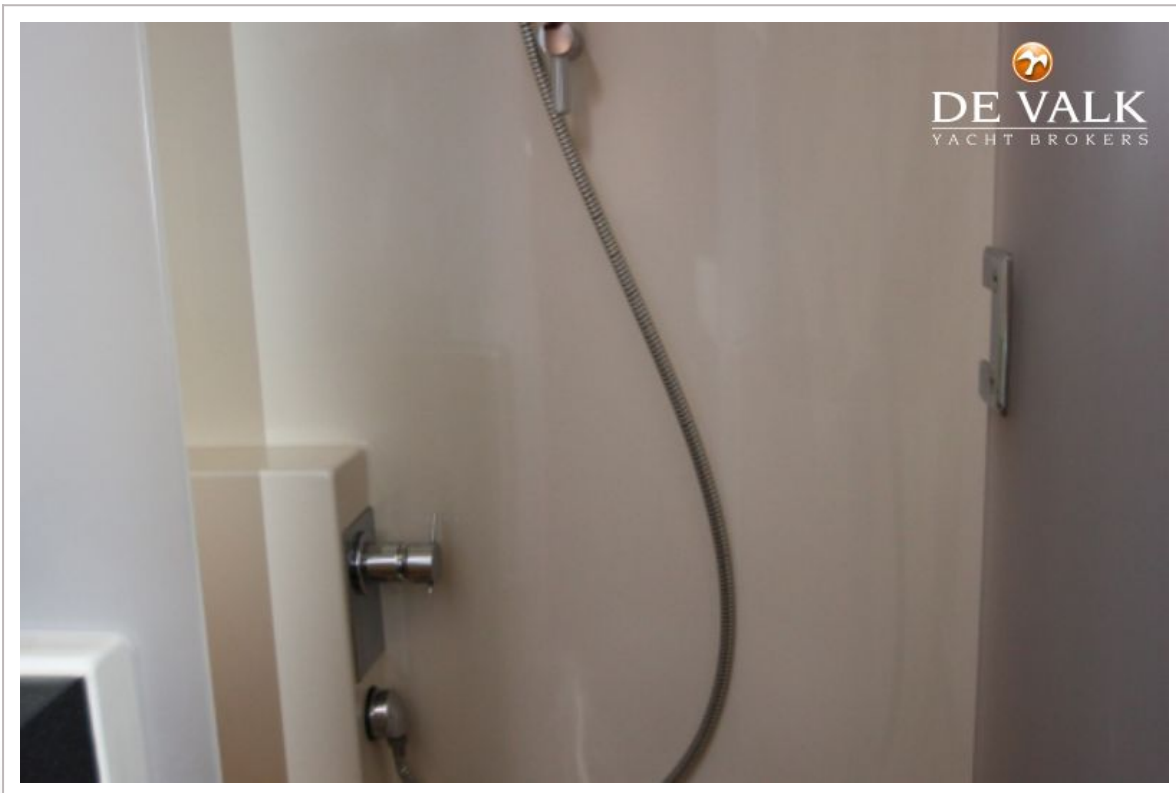
HANSE 630E



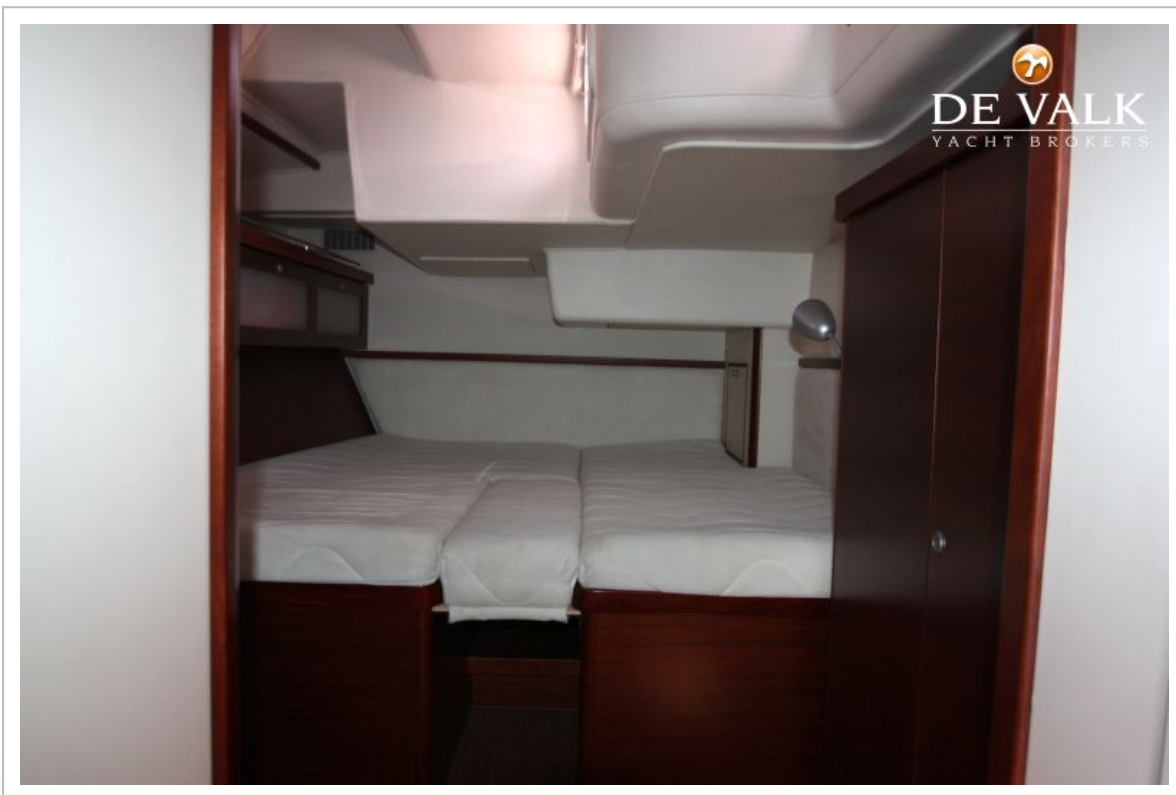
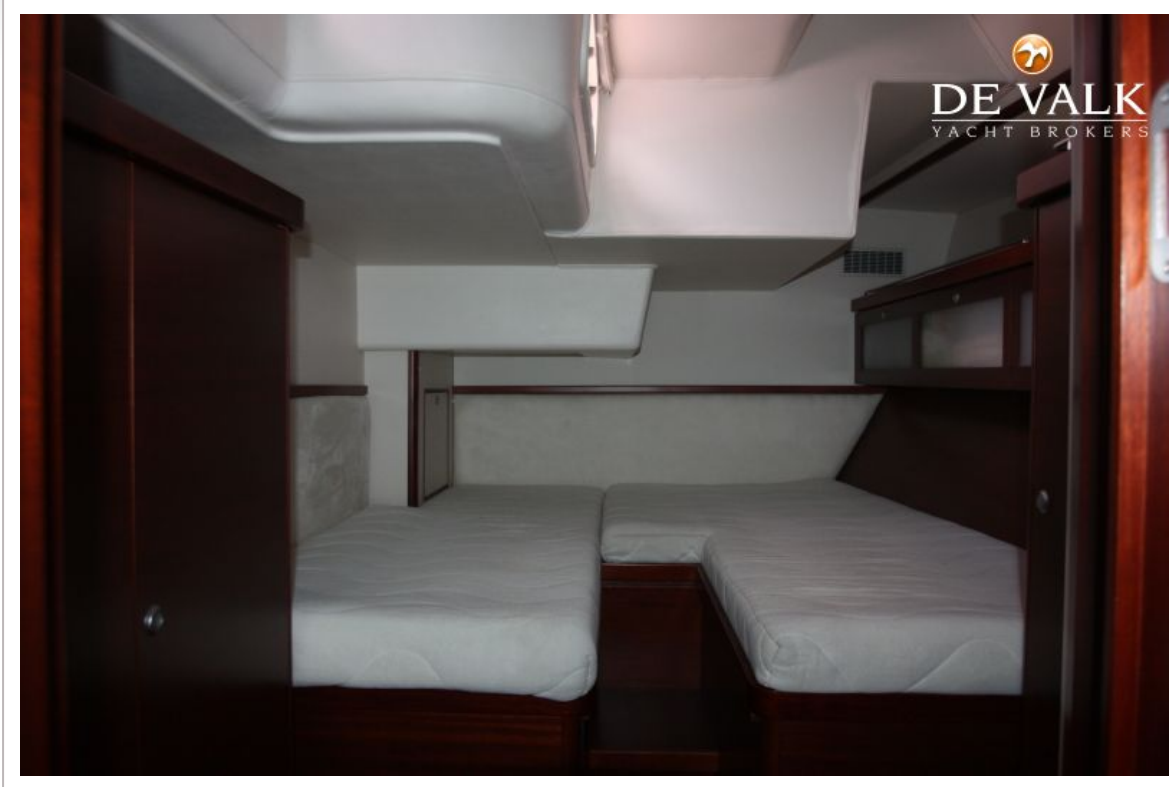
HANSE 630E



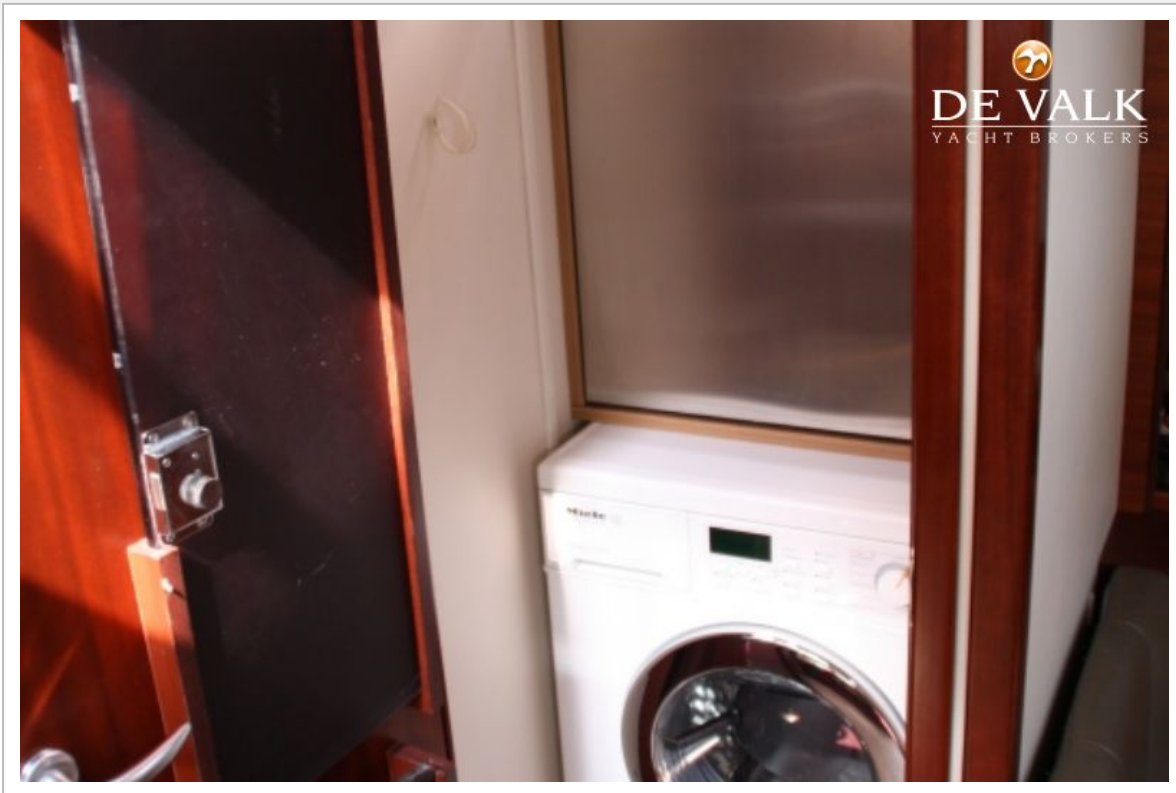
HANSE 630E



HANSE 630E



HANSE 630E



HANSE 630E

