



DE VALK  
YACHT BROKERS



## KESSLINE MISSION



DE VALK  
YACHT BROKERS

## BROKER'S COMMENTS

Stunning Kessline Mission, nearly new vessel with a beautiful open cockpit layout. Built in 2008 by Van Kessel Yachting in The Netherlands. Ideal for cruising the inland waterways as well as offshore cruising due to her CE-B certification. Offered with many options in a very good state of maintenance. Central heating, airconditioning in the master bedroom, bow- and sternthruster, generator.. Ready to go and suitable for the French Canals!

*Arjen Hoeksma*

## SPECIFICATIONS

<b>Dimensions</b>	14.99 x 4.70 x 1.05 (m)	<b>Builder</b>	Van Kessel Yachting - Wessem
<b>Built</b>	2008	<b>Cabins</b>	3
<b>Material</b>	Steel	<b>Berths</b>	6
<b>Engine(s)</b>	2 x Volvo Penta D3 diesel	<b>Hp/Kw</b>	2 x 110.00 (hp), 80.85 (kw)
<b>Asking price</b>	sold (VAT )	<b>Lying</b>	at sales office

## CONTACT

<b>Sales office</b>	De Valk Loosdrecht B.V.	<b>Telephone</b>	+31 (0)35 582 90 30
<b>Address</b>	't Breukeleveense Meentje 6 1231LM Loosdrecht / Wijdmeren NL	<b>E-mail</b>	loosdrecht@devalk.nl

## DISCLAIMER

These particulars are given in good faith as supplied but cannot be guaranteed.



## GENERAL

Model	KESSLINE MISSION
Type	motor yacht
LOA (m)	14,99
LWL (m)	13,70
Beam (m)	4,70
Draft (m)	1,05
Air draft (m)	3,05
Headroom (m)	1,95
Year built	2008
Builder	Van Kessel Yachting - Wessem
Country	The Netherlands
Designer	Van Vossen
Displacement (t)	23
CE norm	B
Hull material	steel
Hull colour	blue
Hull thickness (mm)	5
Hull shape	multi hard chine
Superstructure material	steel
Superstructure (mm)	4
Rubbing strake	stainless steel
Deck material	steel
Deck finish	teak 17mm thick teak, 50 cm width side decks
Cockpit deck finish	teak
Window frame	aluminum
Window material	double glazing Gebo Stalite
Portholes	stainless steel
Insulation	rockwool
Radar arch	collapsible
Mast can be lowered	yes



Fuel tank (litre)	steel 2000
Level indicator (fuel tank)	yes
Freshwater tank (litre)	stainless steel 1250
Level indicator (freshwater)	yes
Blackwater tank (litre)	stainless steel 300
Level indicator (blackwater)	yes
Blackwater tank extraction	deck extraction + pump
Wheel steering	hydraulic
Inside helm position	yes
Outside helm position	
More info on paintwork	2-components "International"

## ACCOMMODATION

Cabins	3
Berths	6
Interior	teak
Floor	parquett
Open cockpit	yes
Headroom saloon (m)	1,95
Heating	central heating Kabola
Air-conditioning	In front
Dinette	Leather upholstered
Galley	yes
Countertop	corian
Sink	stainless steel
Cooker	ceramic Indesit
Extractor	Dometic
Microwave	Etna combi
Fridge	Candy
Freezer	Candy 3-trays
Hot water system	220V + engine Boiler



Water pressure system	electrical
Dishwasher	Candy
Owners cabin	french bed
Wardrobe	hanging and drawers
Bathroom	en suite
Toilet	en suite Vetus
Toilet system	electric
Wash basin	in the bathroom Corian worktop
Shower	shared
Guest cabin 1	double bed
Wardrobe	shelves
Bathroom	yes
Toilet	en suite Vetus
Toilet system	electric
Wash basin	in the bathroom Corian worktop
Shower	shared
Guest cabin 2	double bed
Wardrobe	shelves

## MACHINERY

No of engines	2
Make	Volvo Penta
Type	D3
HP	110,00
kW	80,85
Fuel	diesel
Year installed	2008
Maximum speed (kn)	10 Knots
Cruising speed (kn)	6,5 Knots
Engine cooling system	freshwater heat exchanger
Drive	shaft



Engine controls	electrical
Engine controls	electrical Outside steering position
Bowthruster	electric Side Power 95Kgf proportionally adjustable
Sternthruster	electric Side Power 75Kgf proportionally adjustable
Exhaust	watercooled
Thrust bearing	yes
Propeller type	fixed
Propeller blades	4
Propeller shaft material	stainless steel Python drive
Shaft lubrication	water
Manual bilge pump	1x
Electric bilge pump	2x
Electrical installation	12/230V
Generator	Kohler 4 kW
Batteries	6 x gel (2014) 200 Amp
Start battery	2x Optima 55 Ah
Generator battery	yes
Bowthruster battery	yes
Battery charger/inverter	2x Victron Phoenix multiplus 12V/3000VA/120A
Insulation transformer	Victron 3600W

## NAVIGATION

Electric compass	Raymarine ST60+
Depth sounder	Raymarine ST60+
Log	Raymarine ST60+
Repeater	Autopilot
VHF	Cobra Marine
Autopilot	Raymarine ST6002
Rudder angle indicator	Raymarine ST60+
Radar/plotter	Raymarine 4kW radome + C120 multifunctional display
Personal computer	yes



PC connection	yes
Camera	Starboard side and portside
Searchlight	Double
Extra info	Holland Nautic control lever

## EQUIPMENT

Bimini	yes
Cockpit cushions	Suede
Cockpit table	Teak
Cockpit chairs	Teak
Bathing platform	Teak
Boarding ladder	stainless steel
Transom door	Stern
Anchor	yes
Anchor chain	yes
Windlass	electrical With battery
Deck wash	yes
Davits	stainless steel
Davits controls	electrical
Sea railing	stainless steel
Grab rail (superstructure)	stainless steel
Railing side opening gates	Starboard side / portside
Wiper	3x electric
Horn	yes
TV	Philips LCD on lift
TV receiver	Trac Vision automatic
Radio-cd player	Kenwood
Speakers in salon	4x Kenwood
Fire extinguisher	yes
Extinguisher in engine room	yes
Auto extinguisher system	yes













# KESSLINE MISSION



# KESSLINE MISSION





# KESSLINE MISSION



# KESSLINE MISSION





# KESSLINE MISSION



# KESSLINE MISSION





# KESSLINE MISSION



# KESSLINE MISSION

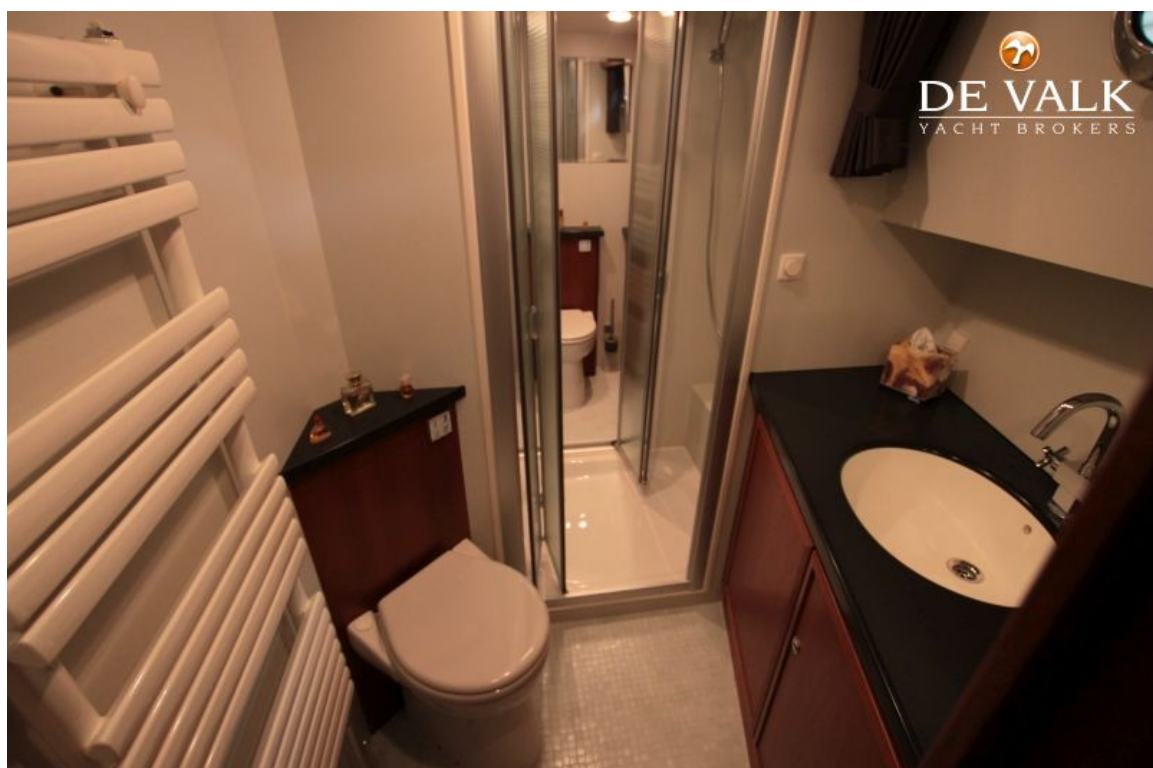
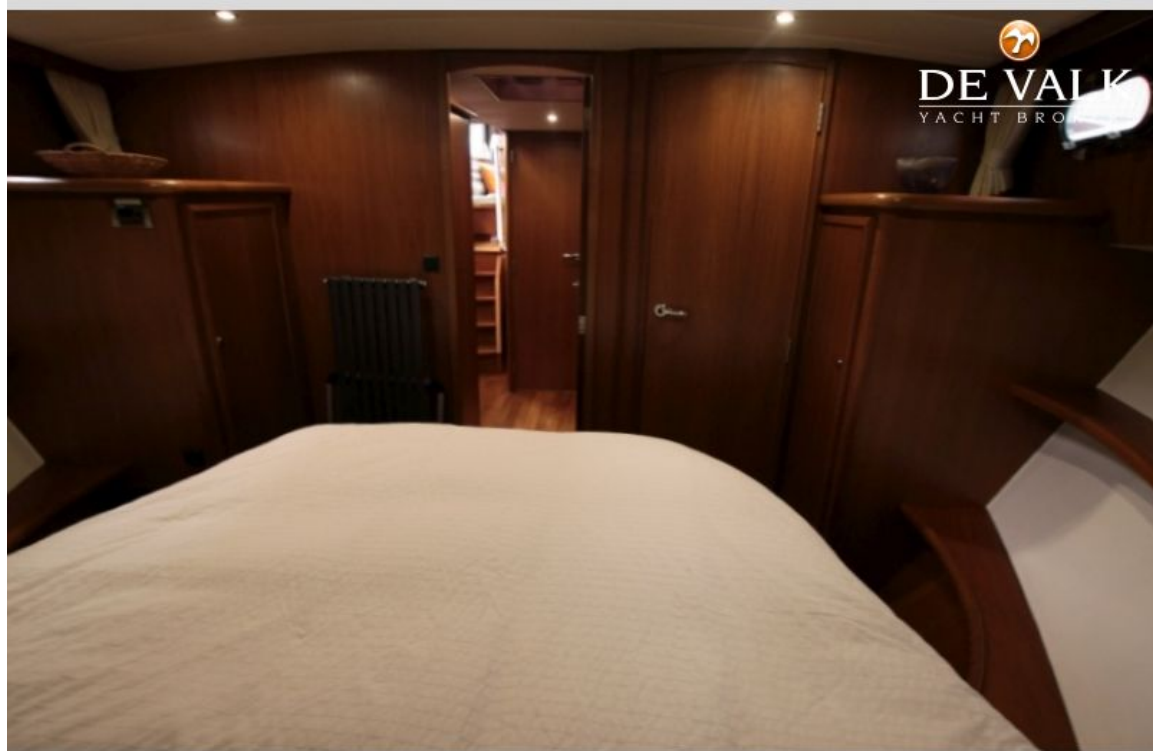




# KESSLINE MISSION

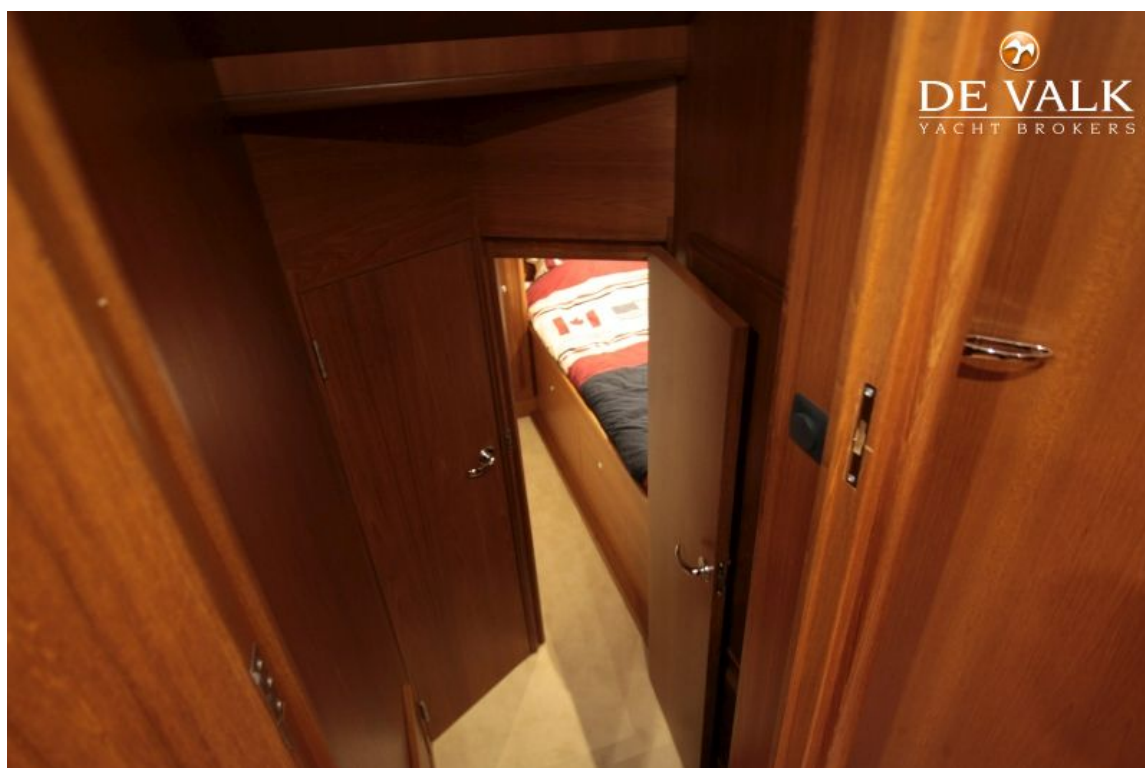




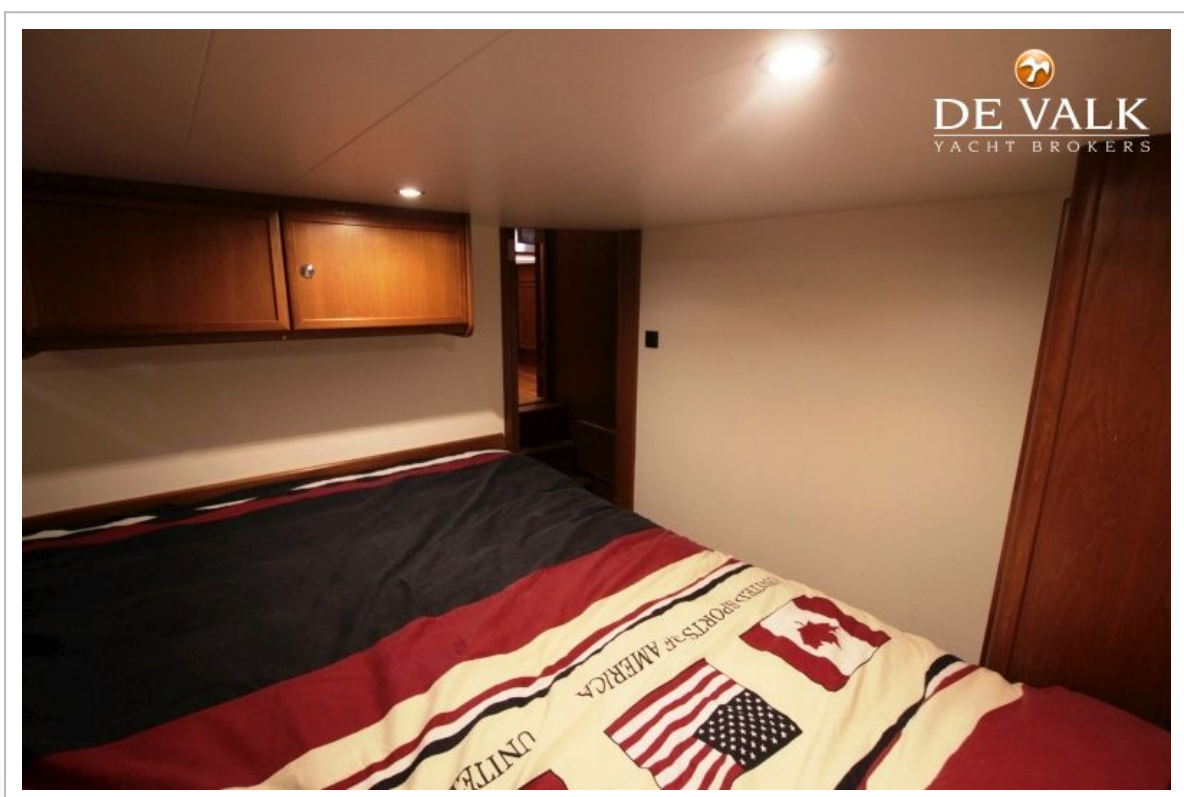
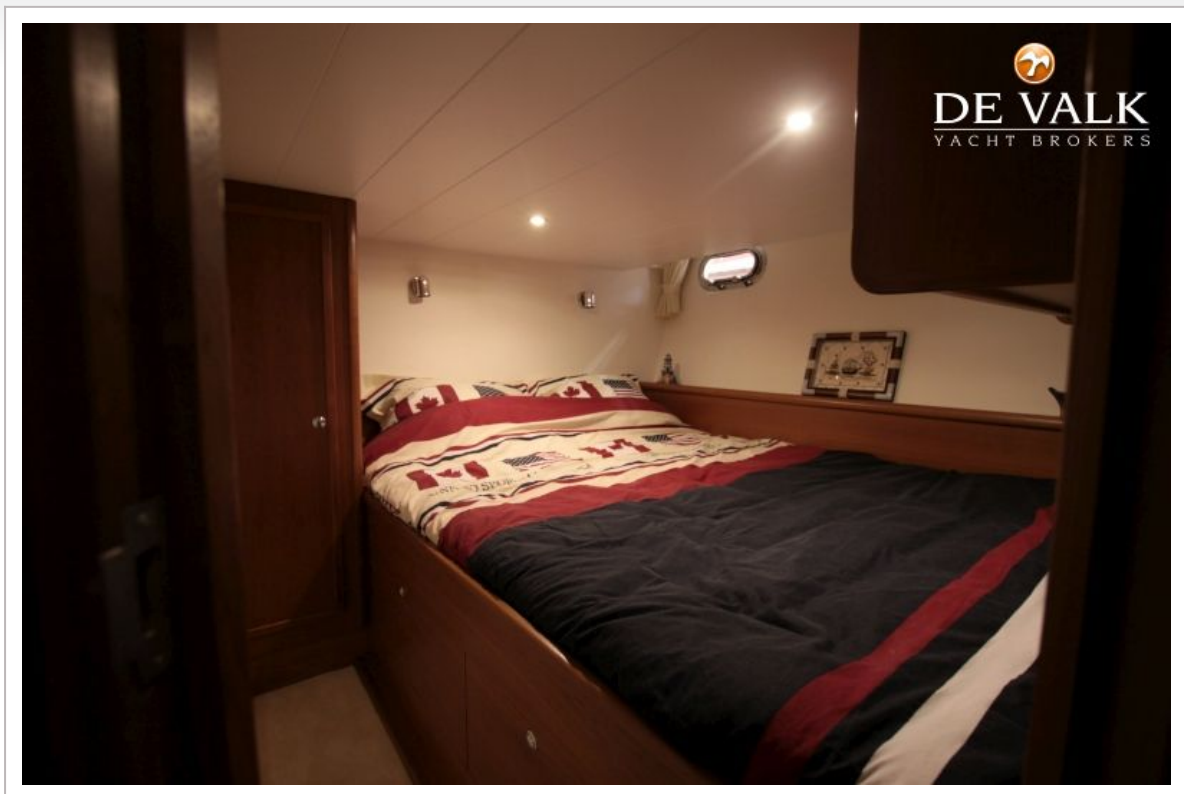


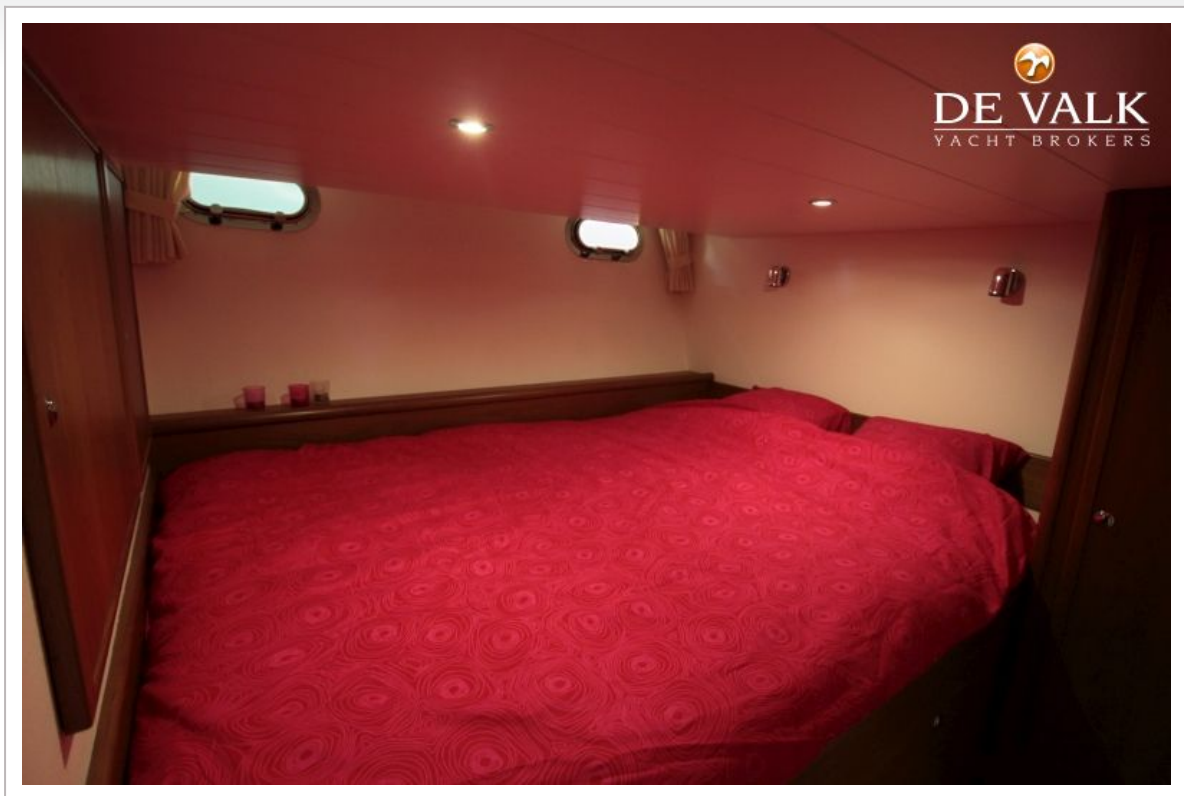


# KESSLINE MISSION



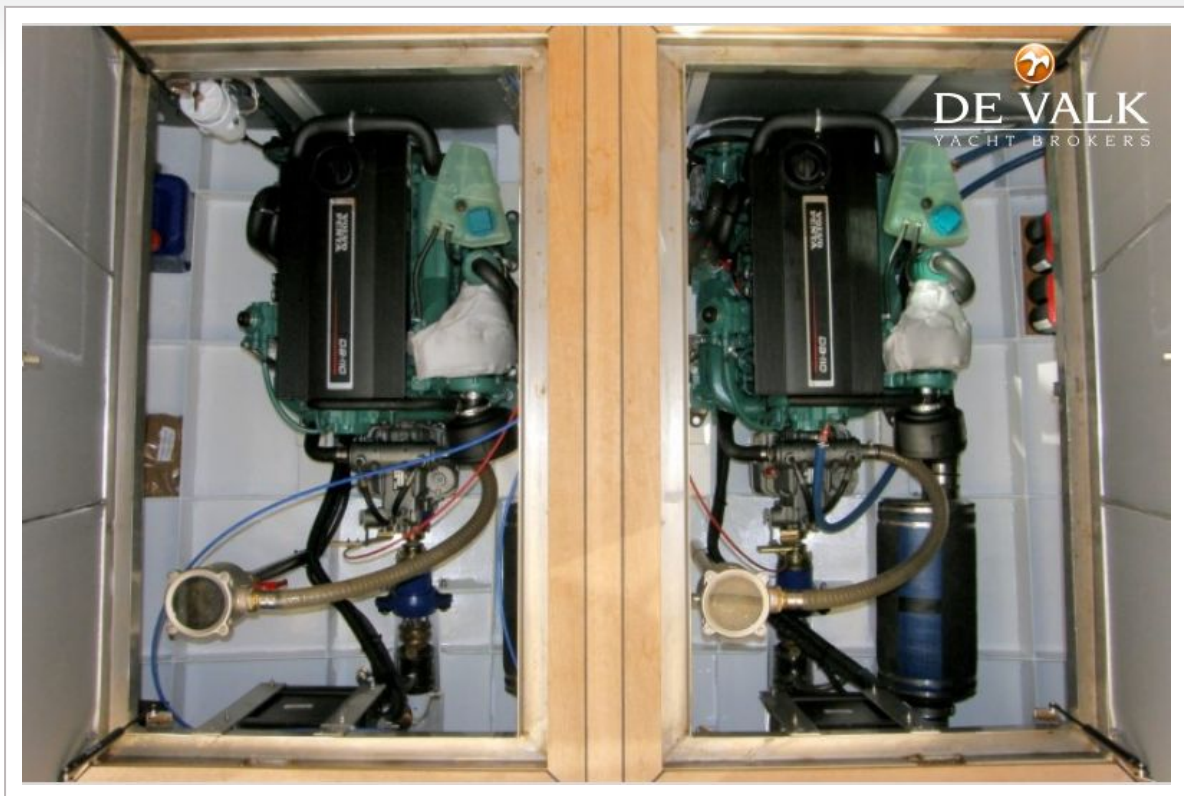
# KESSLINE MISSION







# KESSLINE MISSION



# KESSLINE MISSION





