



## APREAMARE 10 CABINATO

# APREAMARE 10 CABINATO

## BROKER'S COMMENTS

Apreamare 10 Cabinato. Well maintained vessel with less then 300 engine hours. Ideal for inland waters and coastal cruising with her CE-B category and typical hull design. She will be auctioned on February 1st 2017 in cooperation with Schipveiling and BVA Autions. For further details go to:

<https://en.bva-auctions.com/auction/index/23486> Starting price of the auction EUR. 50.000, offers can be made from January 25th 2017 on the website of BVA.

*Arjen Hoeksma*

## SPECIFICATIONS

<b>Dimensions</b>	10.70 x 3.35 x 0.70 (m)	<b>Builder</b>	Apreamare Srl
<b>Built</b>	2003	<b>Cabins</b>	1
<b>Material</b>	GRP	<b>Berths</b>	3
<b>Engine(s)</b>	2 x VM MD706 LH diesel	<b>Hp/Kw</b>	2 x 300.00 (hp), 220.50 (kw)
<b>Asking price</b>	sold (VAT )	<b>Lying</b>	at sales office

## CONTACT

<b>Sales office</b>	De Valk Loosdrecht B.V.	<b>Telephone</b>	+31 (0)35 582 90 30
<b>Address</b>	't Breukeleveense Meentje 6 1231LM Loosdrecht / Wijdmeren NL	<b>E-mail</b>	loosdrecht@devalk.nl

## DISCLAIMER

These particulars are given in good faith as supplied but cannot be guaranteed.



# APREAMARE 10 CABINATO

## GENERAL

Model	APREAMARE 10 CABINATO
Type	motor yacht
LOA (m)	10,70
Beam (m)	3,35
Draft (m)	0,70
Air draft (m)	3,20
Headroom (m)	1,90
Year built	2003
Builder	Apreamare Srl
Country	Italy
Designer	Spadolini
Displacement (t)	8,5
CE norm	B
Hull material	GRP
Hull colour	blue
Hull shape	deep-V
Superstructure material	GRP
Rubbing strake	
Deck material	GRP
Deck finish	teak
Cockpit deck finish	teak
Window frame	stainless steel
Window material	tempered glass
Portholes	yes
Radar arch	collapsible
Fuel tank (litre)	stainless steel 2x 360
Level indicator (fuel tank)	yes
Freshwater tank (litre)	yes
Level indicator (freshwater)	yes
Blackwater tank (litre)	yes



# APREAMARE 10 CABINATO

Wheel steering	hydraulic
Extra info	Engine room fully sound insulated

## ACCOMMODATION

Cabins	1
Berths	3
Interior	cherry Wood
Floor	teak and holly
Aft deck	yes
Saloon	yes
Headroom saloon (m)	1,90
Dinette	U-shaped
Galley	yes
Countertop	corian
Sink	stainless steel
Cooker	calor gas
Fridge	with freezer compartment Isotherm 85L
Hot water system	Via Quick boiler
Water pressure system	electrical
Owners cabin	double bed
Wardrobe	hanging and drawers
Bathroom	yes
Toilet	shared
Toilet system	electric
Wash basin	in the bathroom
Shower	shared

## MACHINERY

No of engines	2
Make	VM
Type	MD706 LH



# APREAMARE 10 CABINATO

HP	300,00
kW	220,50
Fuel	diesel
Year installed	2003
Maximum speed (kn)	30
Cruising speed (kn)	24
Engine hours	288
Engine cooling system	freshwater heat exchanger
Drive	V-drive
Engine controls	electrical
Secondary engine	yes
Engine controls	electrical
Bowthruster	electric
Exhaust	watercooled
Propeller shaft material	stainless steel
Manual bilge pump	yes
Electric bilge pump	yes
Electrical installation	12/230V
Batteries	Maintenance free
Battery monitor	yes
Battery charger	Mastervolt automatic
Shorepower	with cable
Trimtabs	yes

## NAVIGATION

Compass	Ritchie
Depth sounder	Simrad IS12
VHF	yes
GPS	Simrad CP33
Plotter	Simrad CP33
Personal MOB transmitter	Simrad CP33



## EQUIPMENT

Fixed windscreen	yes
Sprayhood	yes
Cockpit cover	yes
Bimini	yes
Bathing platform	Teak
Boarding ladder	stainless steel
Deck shower	yes
Anchor	yes
Anchor chain	yes
Windlass	electrical Lofrans
Sea railing	stainless steel
Grab rail (superstructure)	stainless steel
Wiper	2x
Horn	yes
Mooring lines	yes
TV	Philips LCD
Radio-cd player	Sony
Cockpit speakers	Sony
Speakers in salon	Pioneer
Clock - barometer	yes
Fire extinguisher	yes





BROKERAGE | CHARTER | BERTHS | FINANCE | INSURANCE | YACHT MANAGEMENT



**DE VALK**  
YACHT BROKERS



**This yacht will be auctioned,  
for further details please visit [www.devalk.nl](http://www.devalk.nl)**

**Dit schip zal worden geveild,  
voor meer informatie gaat u naar [www.devalk.nl](http://www.devalk.nl)**

**Dieses Schiff wird versteigert,  
für weitere informationen besuchen Sie [www.devalk.nl](http://www.devalk.nl)**

[WWW.DEVALK.NL](http://WWW.DEVALK.NL)



**DE VALK**  
YACHT BROKERS



# APREAMARE 10 CABINATO



# APREAMARE 10 CABINATO



# APREAMARE 10 CABINATO



## APREAMARE 10 CABINATO



# APREAMARE 10 CABINATO



# APREAMARE 10 CABINATO



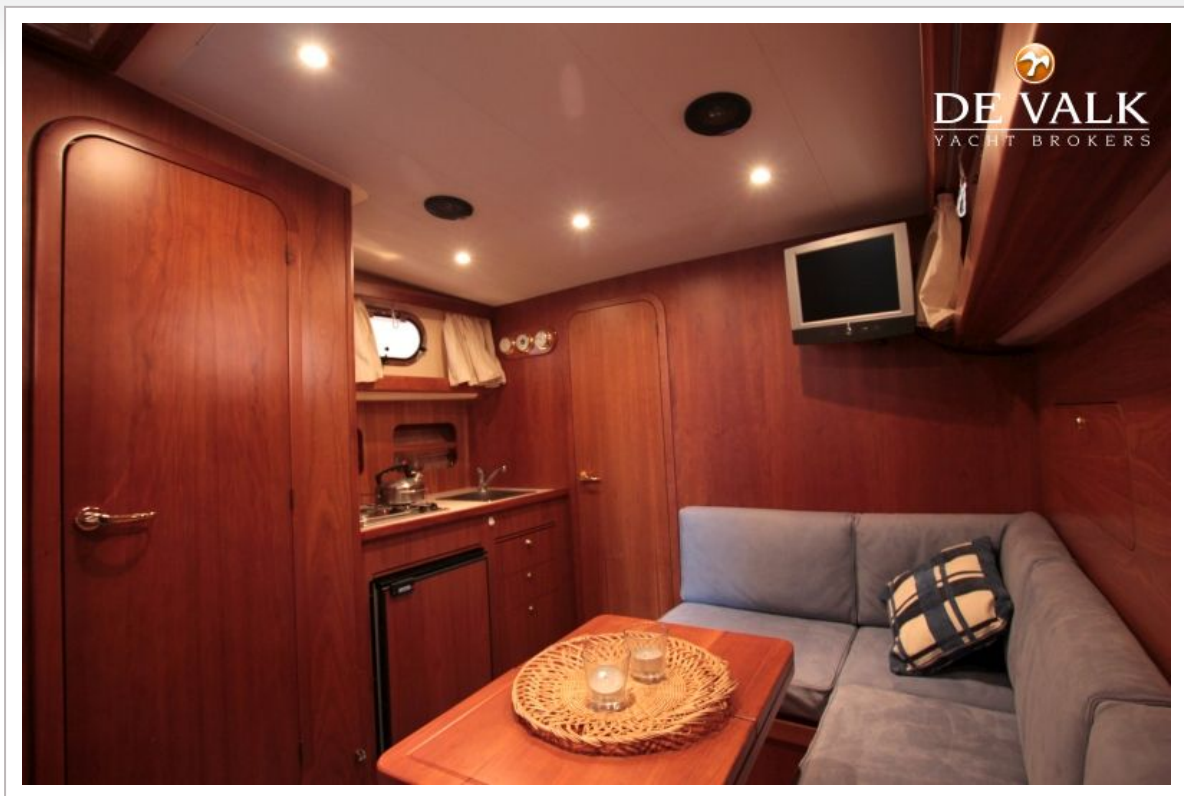
# APREAMARE 10 CABINATO



## APREAMARE 10 CABINATO



# APREAMARE 10 CABINATO



# APREAMARE 10 CABINATO



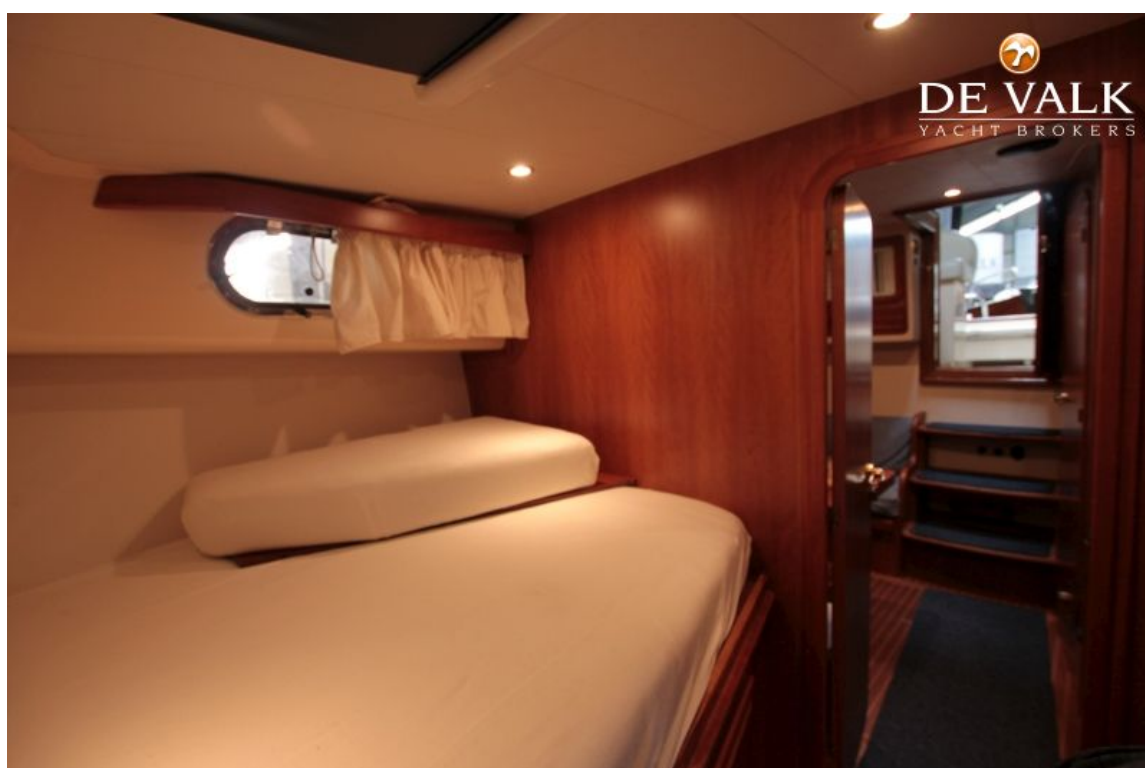
## APREAMARE 10 CABINATO



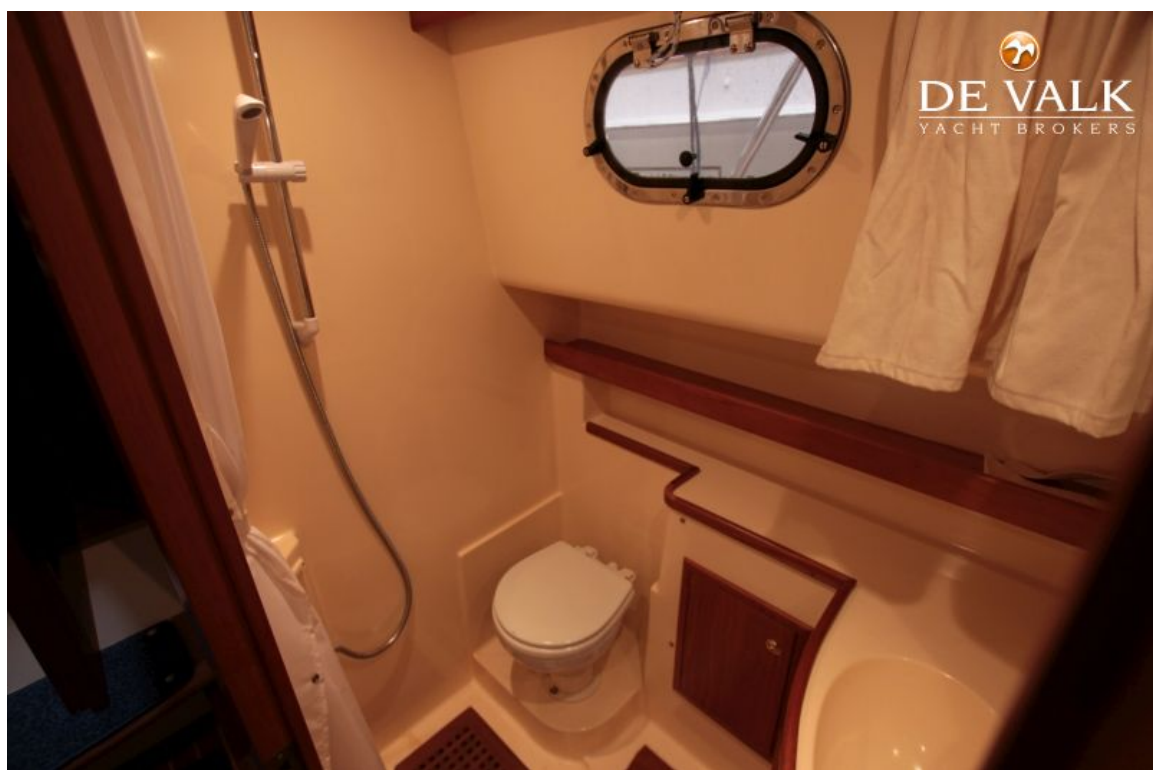
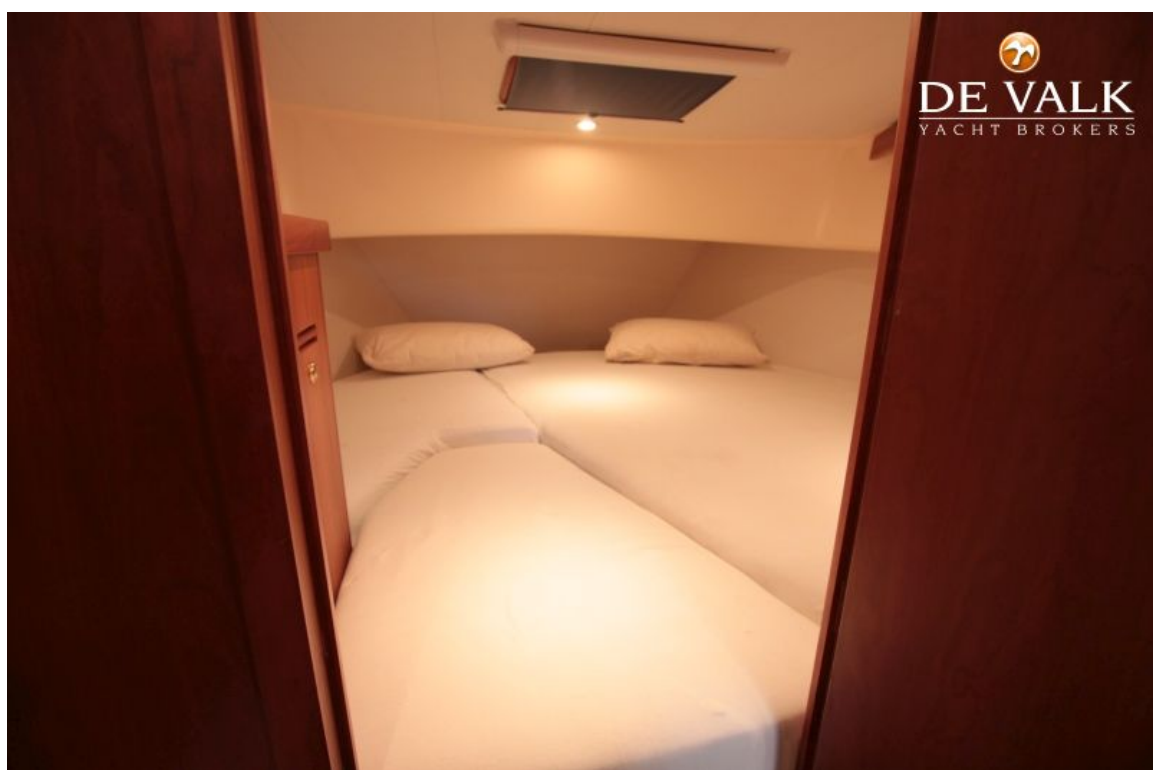
## APREAMARE 10 CABINATO



## APREAMARE 10 CABINATO



## APREAMARE 10 CABINATO



## APREAMARE 10 CABINATO



