



DE VALK
YACHT BROKERS



PURE 49 EXPLORER



DE VALK
YACHT BROKERS

PURE 49 EXPLORER

BROKER'S COMMENTS

The PURE 49 is a unique motoryacht. Designed by Willem Nieland (designer of the European Boat of the year 2012 and winner of several Dutch Boat of the year awards), built in the Netherlands. Modern interior with 3 comfortable cabins. Easy handling by Volvo IPS system.

Mark Hesselmans

SPECIFICATIONS

| | | | |
|---------------------|----------------------------|----------------|------------------------------|
| Dimensions | 15.29 x 4.66 x 1.15 (m) | Builder | Pure Premium Yachts |
| Built | 2010 | Cabins | 4 |
| Material | Aluminium | Berths | 6 |
| Engine(s) | 2 x Volvo Penta IPS diesel | Hp/Kw | 2 x 435.00 (hp), 320.00 (kw) |
| Asking price | sold (VAT) | Lying | at sales office |

CONTACT

| | | | |
|---------------------|--|------------------|----------------------|
| Sales office | De Valk Loosdrecht B.V. | Telephone | +31 (0)35 582 90 30 |
| Address | 't Breukeleveense Meentje 6 1231LM Loosdrecht / Wijdmeren NL | E-mail | loosdrecht@devalk.nl |

DISCLAIMER

These particulars are given in good faith as supplied but cannot be guaranteed.



PURE 49 EXPLORER

GENERAL

| | |
|------------------------------|-------------------------|
| Model | PURE 49 EXPLORER |
| Type | motor yacht |
| LOA (m) | 15,29 |
| Beam (m) | 4,66 |
| Draft (m) | 1,15 |
| Year built | 2010 |
| Builder | Pure Premium Yachts |
| Country | The Netherlands |
| Designer | W. Nieland |
| Displacement (t) | 13,6 |
| CE norm | A |
| Hull material | aluminium |
| Hull colour | grey |
| Hull shape | yes |
| Superstructure material | aluminium |
| Rubbing strake | rubber |
| Deck material | aluminium |
| Deck finish | paint |
| Superstructure deck finish | paint |
| Cockpit deck finish | teak |
| Window frame | aluminium |
| Window material | Thermopane safety glass |
| Portholes | stainless steel |
| Radar arch | yes |
| Mast can be lowered | yes |
| Fuel tank (litre) | 2200 + 700 |
| Level indicator (fuel tank) | yes |
| Freshwater tank (litre) | 1000 + 150 |
| Level indicator (freshwater) | yes |
| Blackwater tank (litre) | yes |



| | |
|------------------------------|------------------|
| Level indicator (blackwater) | yes |
| Blackwater tank extraction | yes |
| Wheel steering | electric |
| Inside helm position | yes |
| Outside helm position | yes |
| Extra info | Electric hatches |

ACCOMMODATION

| | |
|--------------------------|---------------------------------------|
| Cabins | 4 |
| Berths | 6 |
| Interior | yes |
| Floor | teak |
| Aft deck | yes |
| Pilot house/deck saloon | yes |
| Saloon | With inside steering position |
| Headroom saloon (m) | yes |
| Heating | Webasto climate control in all cabins |
| Air-conditioning | Webasto climate control in all cabins |
| Navigation center | Simrad |
| Dinette | With leather upholstery |
| Sliding door to cockpit | yes |
| Sliding door to aft deck | yes |
| Galley | yes |
| Countertop | corian |
| Sink | stainless steel |
| Cooker | 4-burner halogen |
| Oven | Electric |
| Extractor | yes |
| Fridge | with freezer compartment |
| Freezer | yes |
| Hot water system | 220V + engine 2 x boiler Isotherm 40L |



PURE 49 EXPLORER

| | |
|-----------------------|---------------------|
| Water pressure system | electrical Hydrofor |
| Dishwasher | yes |
| Ice maker | yes |
| Owners cabin | yes |
| Wardrobe | yes |
| Bathroom | en suite |
| Toilet | en suite |
| Toilet system | electric |
| Wash basin | in the bathroom |
| Shower | yes |
| Guest cabin 1 | double bed |
| Wardrobe | yes |
| Bathroom | shared |
| Toilet | yes |
| Toilet system | electric |
| Wash basin | yes |
| Shower | yes |
| Guest cabin 2 | single bed |
| Guest cabin 3 | single bed |
| Wardrobe | yes |
| Toilet | yes |

MACHINERY

| | |
|--------------------|-------------|
| No of engines | 2 |
| Make | Volvo Penta |
| Type | IPS |
| HP | 435 |
| kW | 320 |
| Fuel | diesel |
| Year installed | 2010 |
| Maximum speed (kn) | 30 |



PURE 49 EXPLORER

| | |
|--------------------------|--|
| Cruising speed (kn) | 20 |
| Consumption (l/hr) | 75 |
| Engine hours | 535 528 |
| Drive | IPS |
| Engine controls | electrical |
| Secondary engine | diesel |
| Engine controls | electrical |
| Electric bilge pump | yes |
| Electrical installation | 24/220V |
| Generator | 11Kw Onan with automatic start/stop function |
| Batteries | 2 x 360Ah |
| Start battery | yes |
| Service battery | yes |
| Battery charger/inverter | 2 x Victron 70Ah/ 2500 Watt |
| Shorepower | yes |
| Watermaker | yes |
| Trimtabs | yes |

NAVIGATION

| | |
|-----------------------|----------------------------------|
| Compass | yes |
| Electric compass | yes |
| Multi control display | Simrad |
| Depth sounder/log | Simrad |
| Log | Volvo EVC |
| Fish finder | Simrad Sonar (colour) |
| VHF | Simrad |
| Autopilot | Simrad AP 28 with remote control |
| Radar | Simrad |
| GPS | yes |
| Plotter | Simrad NSE with 2 x GPS |
| Radar/GPS/plotter | Simrad |



| | |
|---------------------|---------------------|
| Navtex | yes |
| Personal computer | yes |
| Wifi antenna | yes |
| Electronic chart(s) | Simrad |
| AIS receiver | Simrad |
| Navigation lights | yes |
| Searchlight | 2x electric control |

EQUIPMENT

| | |
|----------------------------|--|
| Fixed windscreen | yes |
| Fixed hardtop | yes |
| Bimini | Stainless steel frame |
| Cockpit cushions | yes |
| Cockpit table | Stainless steel with teak trim |
| Cockpit chairs | yes |
| Bathing platform | Stainless steel with teak finish |
| Boarding ladder | 2x |
| Bow ladder | yes |
| Gangway | Besenconi, hydraulic with remote control |
| Deck shower | Hot/cold water |
| Anchor | yes |
| Anchor chain | 100m |
| Capstan | 2 x electric stainless steel |
| Windlass aft | yes |
| Deck wash | yes |
| Sea railing | stainless steel |
| Grab rail (superstructure) | stainless steel |
| Rope cutter | Knife at helm station |
| Wiper | 4x parallel |
| Clearview window | yes |
| Horn | air pressure |



PURE 49 EXPLORER

| | |
|--------------------------|-----|
| Radar reflector | yes |
| Fenders | yes |
| Radio-cd player | yes |
| Surround Sound System | yes |
| Cockpit speakers | yes |
| Speakers in salon | yes |
| Auto extinguisher system | yes |



PURE 49 EXPLORER



PURE 49 EXPLORER



PURE 49 EXPLORER



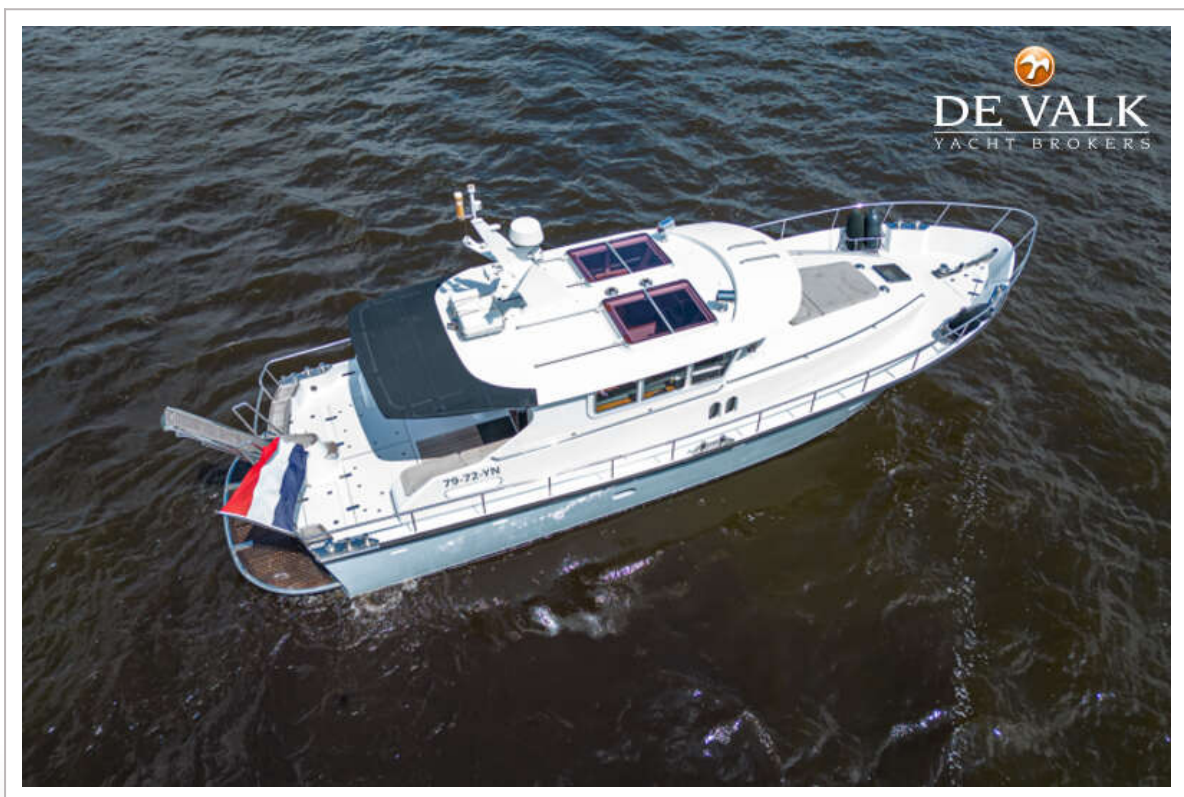
PURE 49 EXPLORER



PURE 49 EXPLORER



PURE 49 EXPLORER



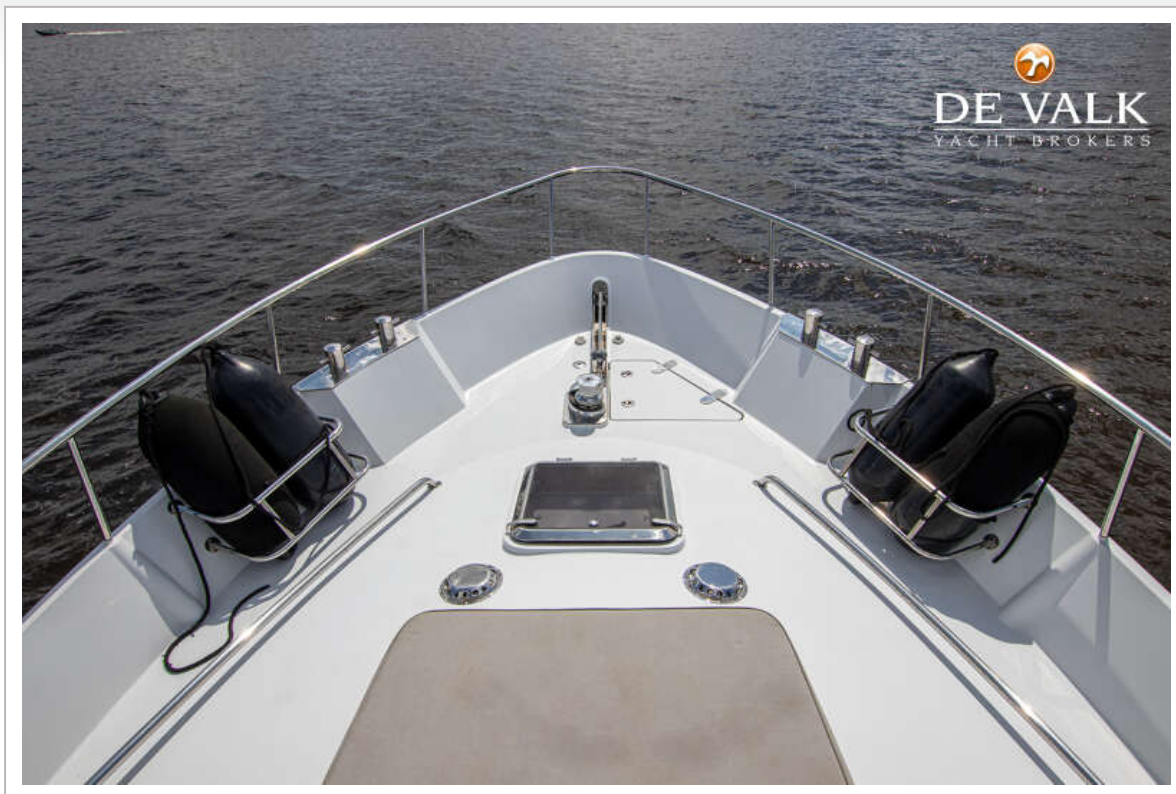
PURE 49 EXPLORER



PURE 49 EXPLORER



PURE 49 EXPLORER



PURE 49 EXPLORER



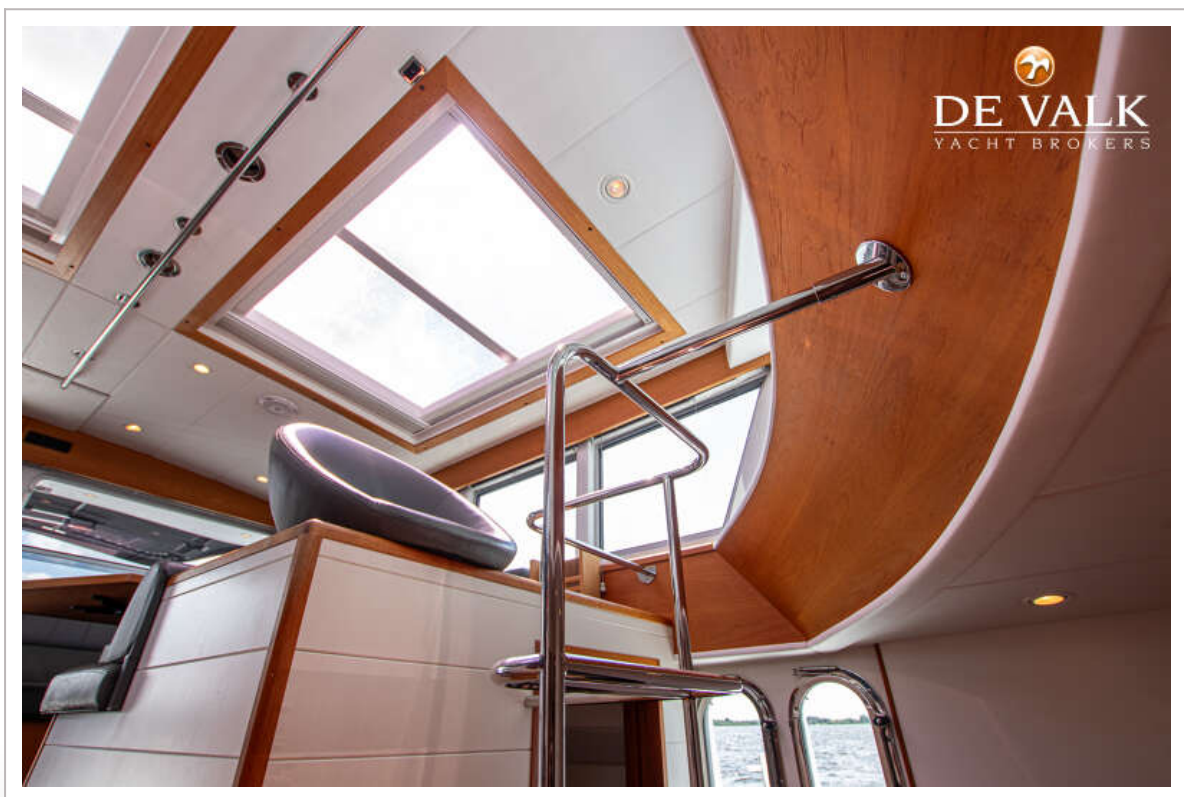
PURE 49 EXPLORER



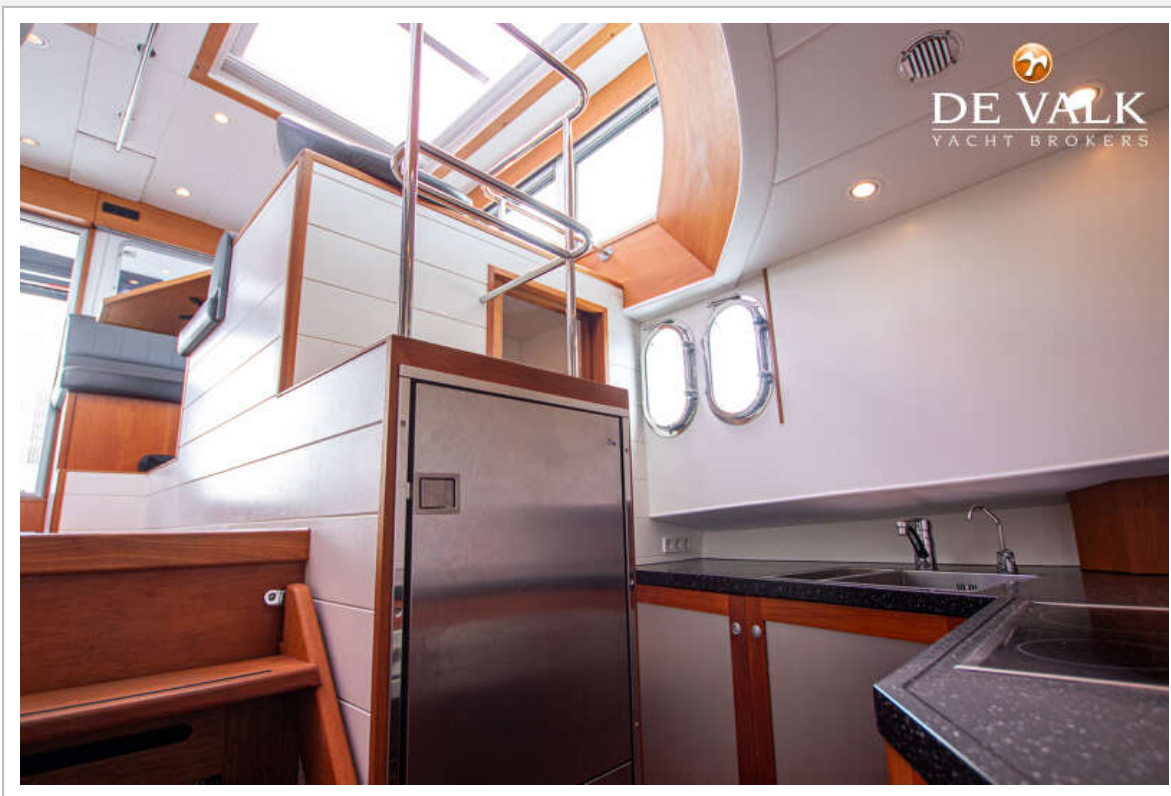
PURE 49 EXPLORER



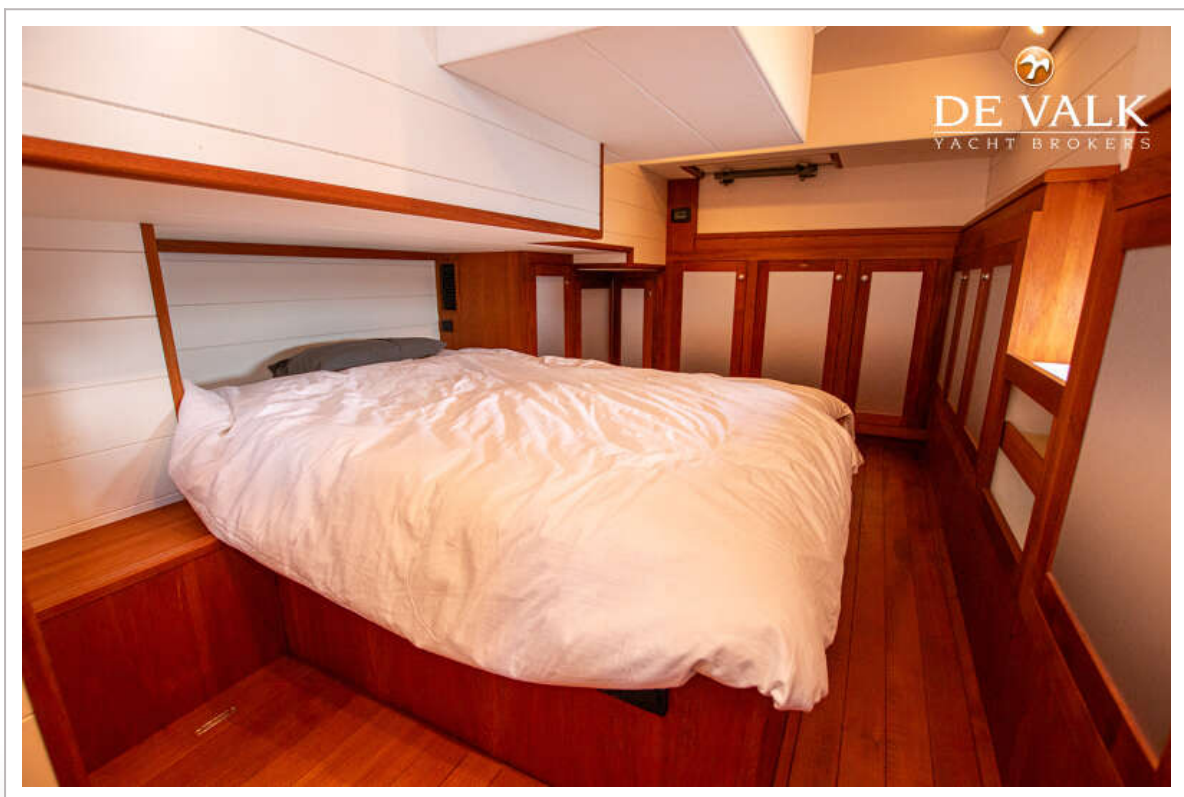
PURE 49 EXPLORER



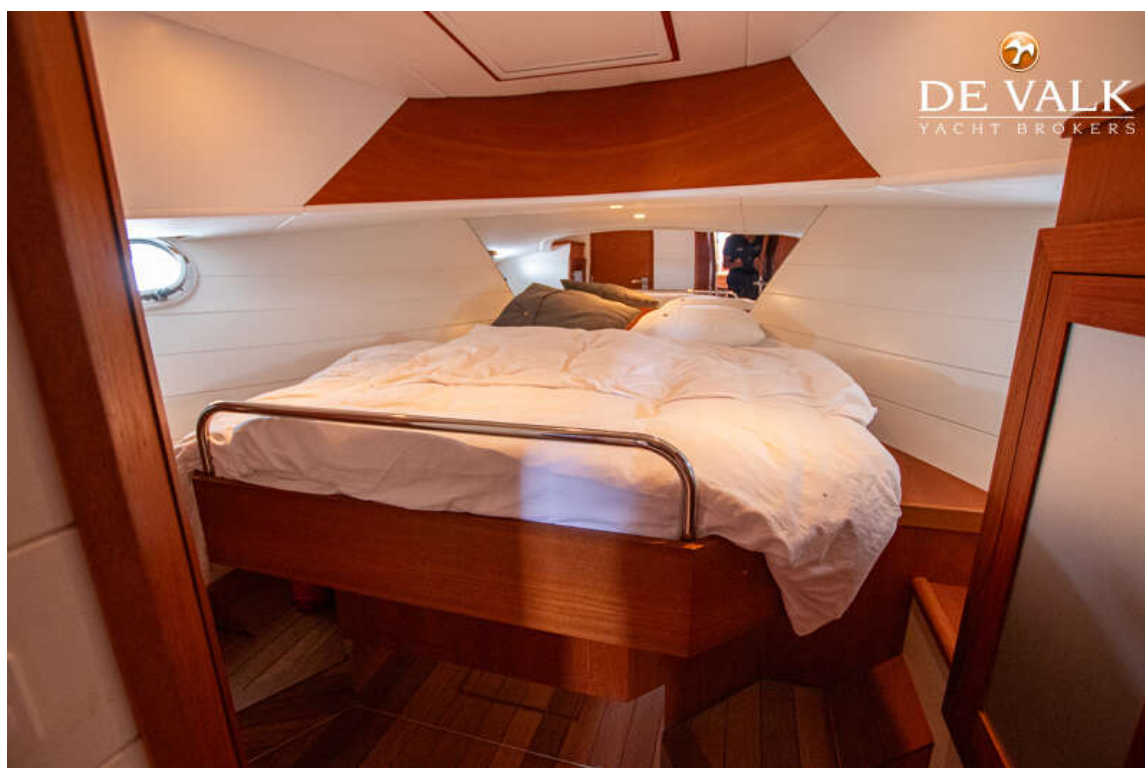
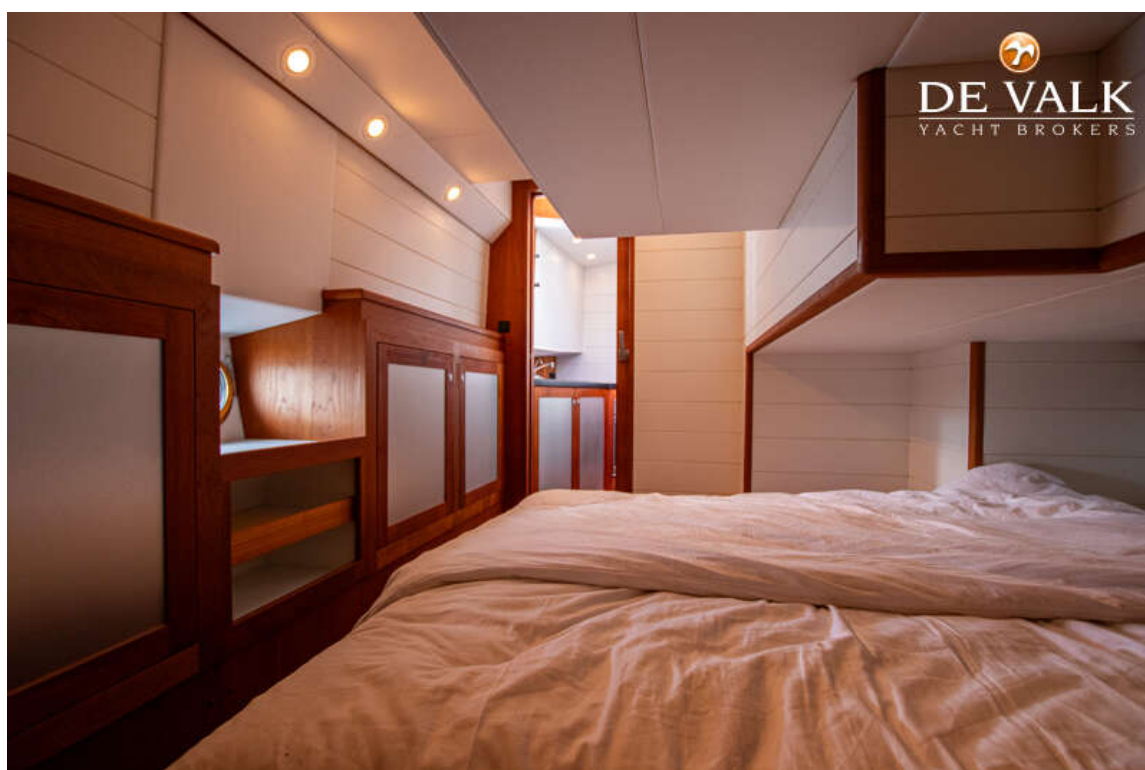
PURE 49 EXPLORER



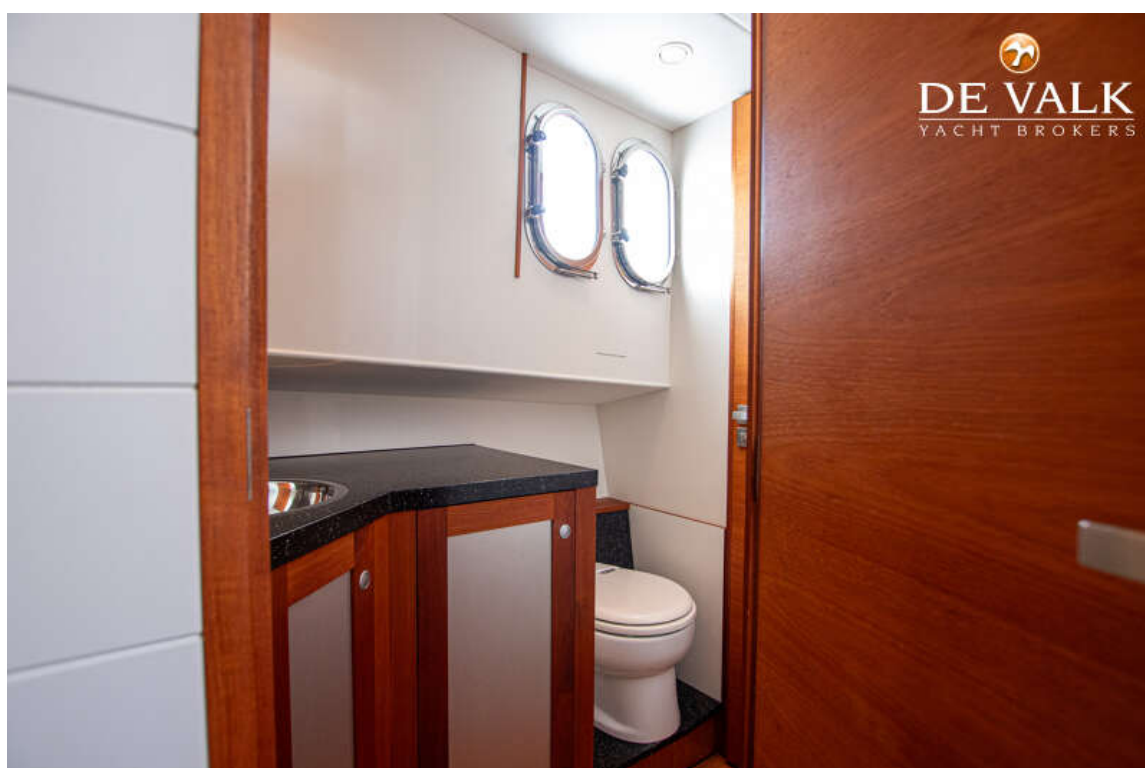
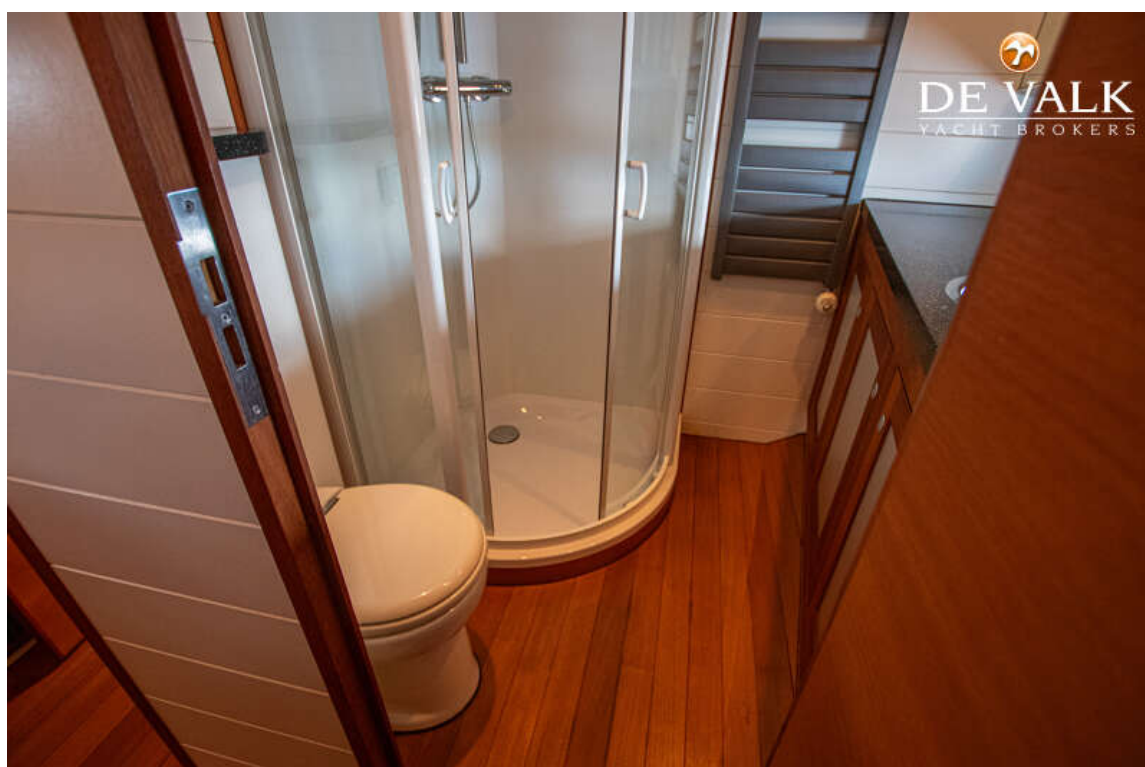
PURE 49 EXPLORER



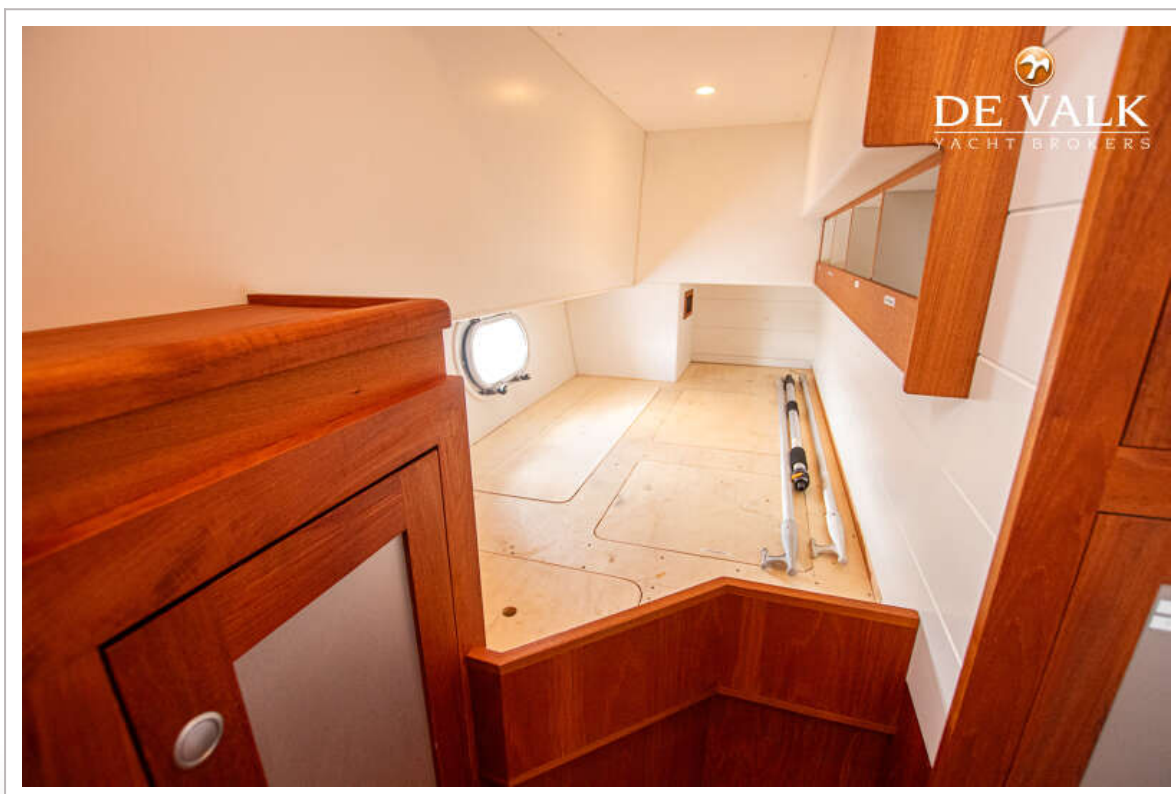
PURE 49 EXPLORER



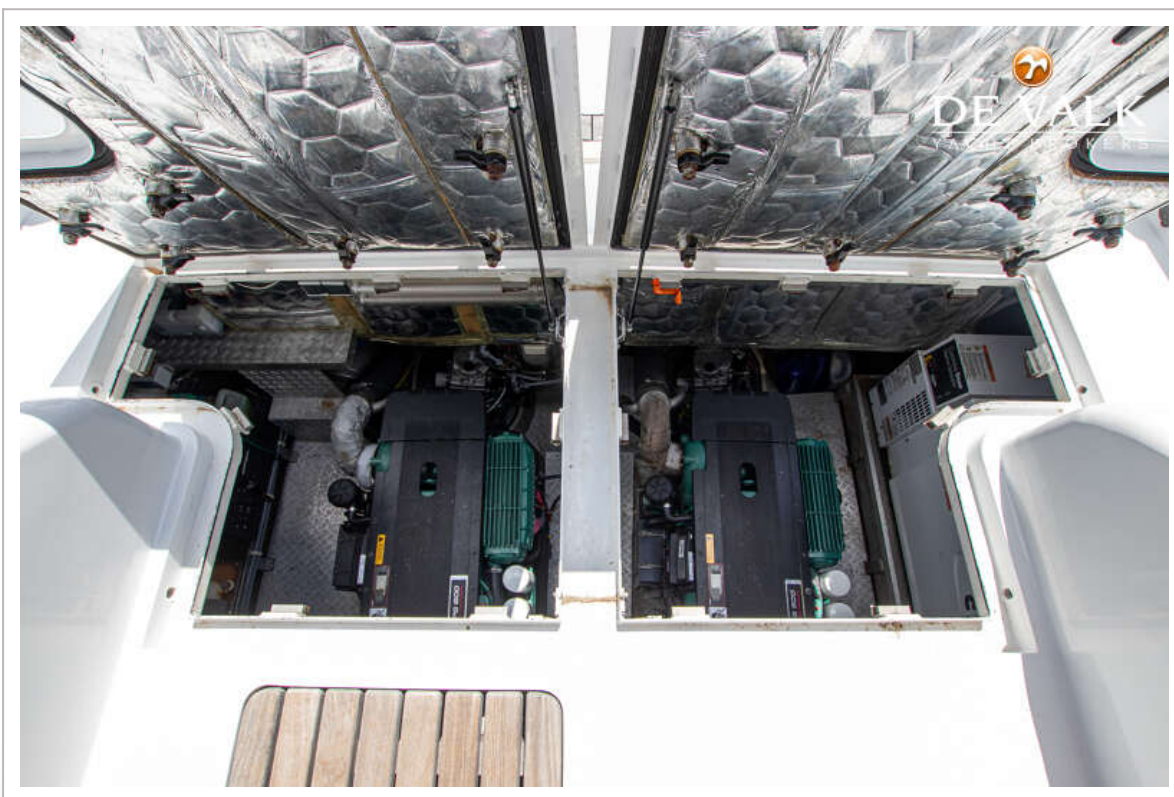
PURE 49 EXPLORER



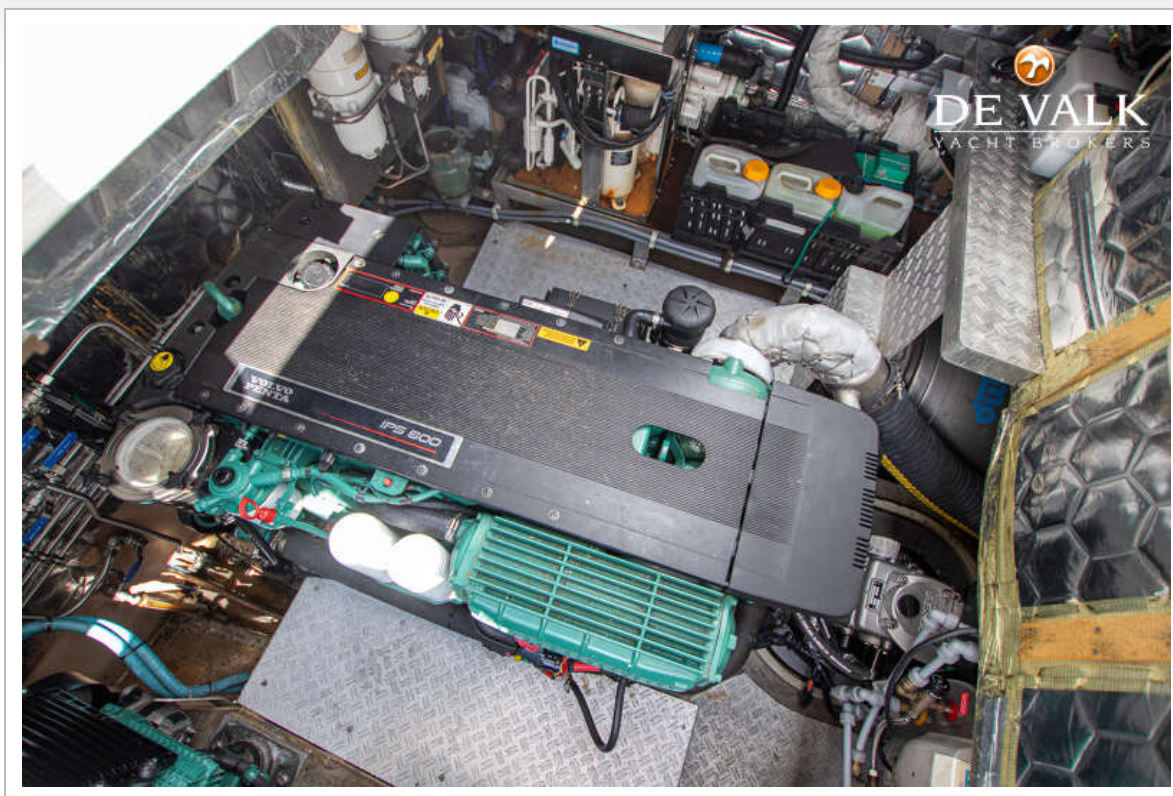
PURE 49 EXPLORER



PURE 49 EXPLORER



PURE 49 EXPLORER



PURE 49 EXPLORER



PURE 49 EXPLORER

