



DE VALK
YACHT BROKERS



KARATAS KETCH 75



DE VALK
YACHT BROKERS

KARATAS KETCH 75

BROKER'S COMMENTS

Viola of London, Steel built 75 ft Ketch. With her 4 luxury outfitted cabins she accomodates up to 8 guests and 4 crew. This is your perfect sailing partner. With MCA Cat 2 coding she is fully equipped to run for commercial charter or for private use. A very seaworthy yacht that is build to professional marine specifications. Please contact us for more details on this Sailing Yacht.

Leonard Bonnema

SPECIFICATIONS

Dimensions	22.65 x 5.85 x 3.00 (m)	Builder	Karatas / Bordo
Built	1990	Cabins	
Material	Steel	Berths	8
Engine(s)	1 x Cummins 6 BTA 5.G-M1	Hp/Kw	250.38 (hp), 184.03 (kw)
Asking price	sold (VAT)	Lying	contact Amsterdam

CONTACT

Sales office	De Valk Amsterdam B.V.	Telephone	+31 (0)35 5829014
Address	Marinaweg 8 (postal address) 1361 AC Almere NL	E-mail	amsterdam@devalk.nl

DISCLAIMER

These particulars are given in good faith as supplied but cannot be guaranteed.



KARATAS KETCH 75

GENERAL

Model	KARATAS KETCH 75
Type	sailing yacht
LOA (m)	22,65
Beam (m)	5,85
Draft (m)	3,00
Air draft (m)	25,00
Year built	1990
Builder	Karatas / Bordo
Country	Turkey
Displacement (t)	82
Hull material	steel
Deck material	steel
Deck finish	teak
Cockpit deck finish	teak
Deckhatch	yes
Fuel tank (litre)	2500
Fuel tank 2 (litre)	2500
Freshwater tank (litre)	4x, 10,000L in total
Greywater tank (litre)	2000

ACCOMMODATION

Berths	8
Crew cabin	yes
Crew berths	4
Interior	mahogany
Floor	wood
Air-conditioning	All cabins
Dinette	yes
Galley	yes
Sink	stainless steel



KARATAS KETCH 75

Cooker	calor gas 4 stove
Oven	yes
Microwave/oven combi	Electric
Fridge	2500 L
Freezer	yes
Hot water system	yes
Water pressure system	yes
Guest cabin 1	double bed
Wardrobe	yes
Bathroom	en suite
Toilet	en suite
Wash basin	in the bathroom
Shower	en suite
Guest cabin 2	double bed
Wardrobe	yes
Bathroom	en suite
Toilet	en suite
Wash basin	in the bathroom
Shower	en suite
Guest cabin 3	double bed
Wardrobe	yes
Bathroom	yes
Toilet	en suite
Wash basin	in the bathroom
Shower	en suite
Guest cabin 4	double bed
Wardrobe	yes
Bathroom	yes
Toilet	en suite
Wash basin	yes
Shower	en suite
Crew cabin(s)	4 berths



KARATAS KETCH 75

Bathroom (crew)	yes
Toilet (crew)	yes
Wash basin	in the bathroom
Shower (crew)	yes
Washing machine	yes

MACHINERY

No of engines	1
Make	Cummins
Type	6 BTA 5.G-M1
HP	250
kW	184,03
Year installed	1990
Maximum speed (kn)	10
Cruising speed (kn)	7
Engine hours	Ca 2400
Bowthruster	electric 20 hp
Propeller type	fixed
Propeller blades	4
Electric bilge pump	2x 24V, 1x 220V
Generator	Kohler/Yanmar 17 kVA
Batteries	8x AGM 200Ah
Battery charger	Mastervolt 24V/80A
Inverter	Mastervolt 24V/2500W
Extra info	Mastervolt Alternator 24V/110A

NAVIGATION

Compass	yes
VHF	yes
Autopilot	Furuno/ hydraulic 2010
Radar	Simrad



KARATAS KETCH 75

GPS	yes
Navtex	yes

EQUIPMENT

Bimini	yes
Winter cover	yes
Gangway	yes
Anchor	Jambo 80kg
Anchor chain	200m, 12mm
Anchor 2	120kg
Anchor chain	180m, 12mm
Windlass	hydraulic DATA double 12mm
Dinghy	4.1M Avon RIB
Outboard	50hp Tohatsu 2 stroke
Davits	yes
Sea railing	stainless steel
Life raft	yes
Life raft (pers)	12
Lifejackets	16
Lifebuoy	2
Fenders	yes
Mooring lines	yes
TV	yes
DVD player	yes
Speakers in salon	yes
Fire extinguisher	3
Auto extinguisher system	yes
Extra info	BBQ

RIGGING

Rigging	ketch
---------	-------



KARATAS KETCH 75

Mainsail	Dolphin 2004
Mizzen	Dolphin 2004
Genoa	Dolphin 2004
Genoa furler	yes
Stormjib	Dolphin 2004
Primary sheet winch	6x Lewmar



KARATAS KETCH 75



KARATAS KETCH 75



KARATAS KETCH 75



KARATAS KETCH 75



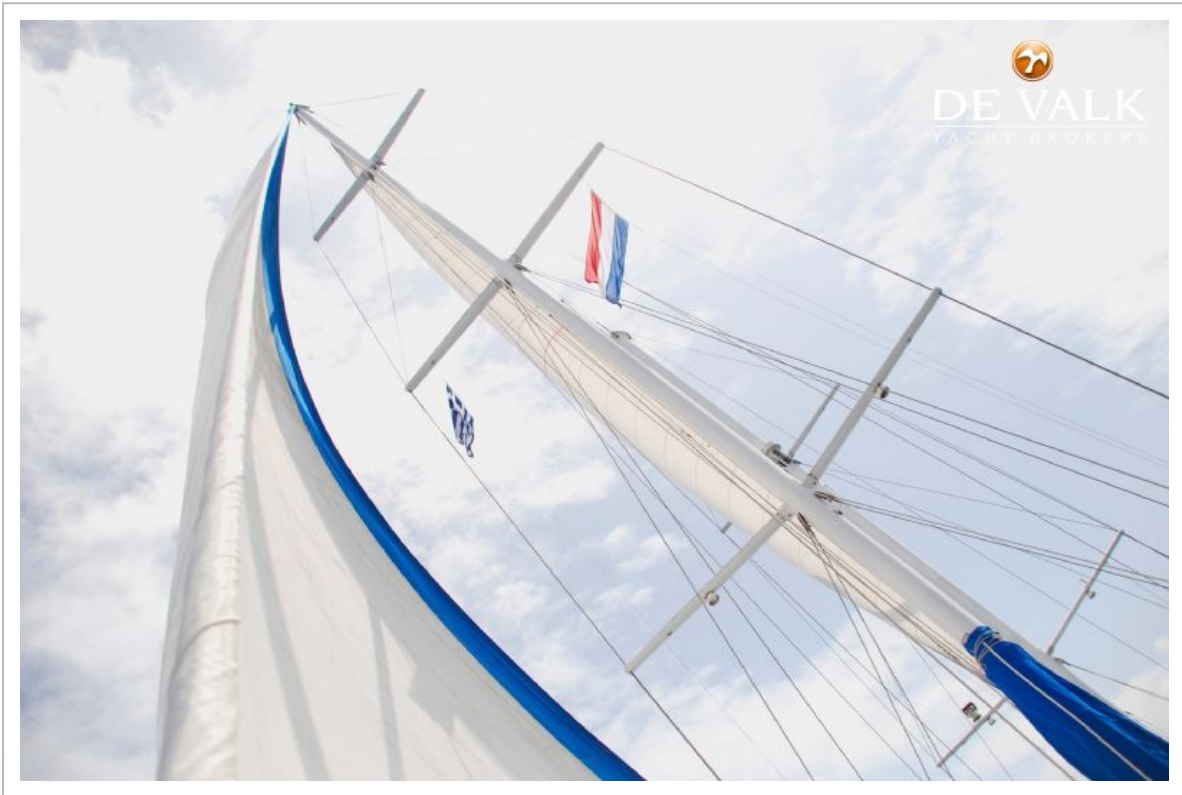
KARATAS KETCH 75



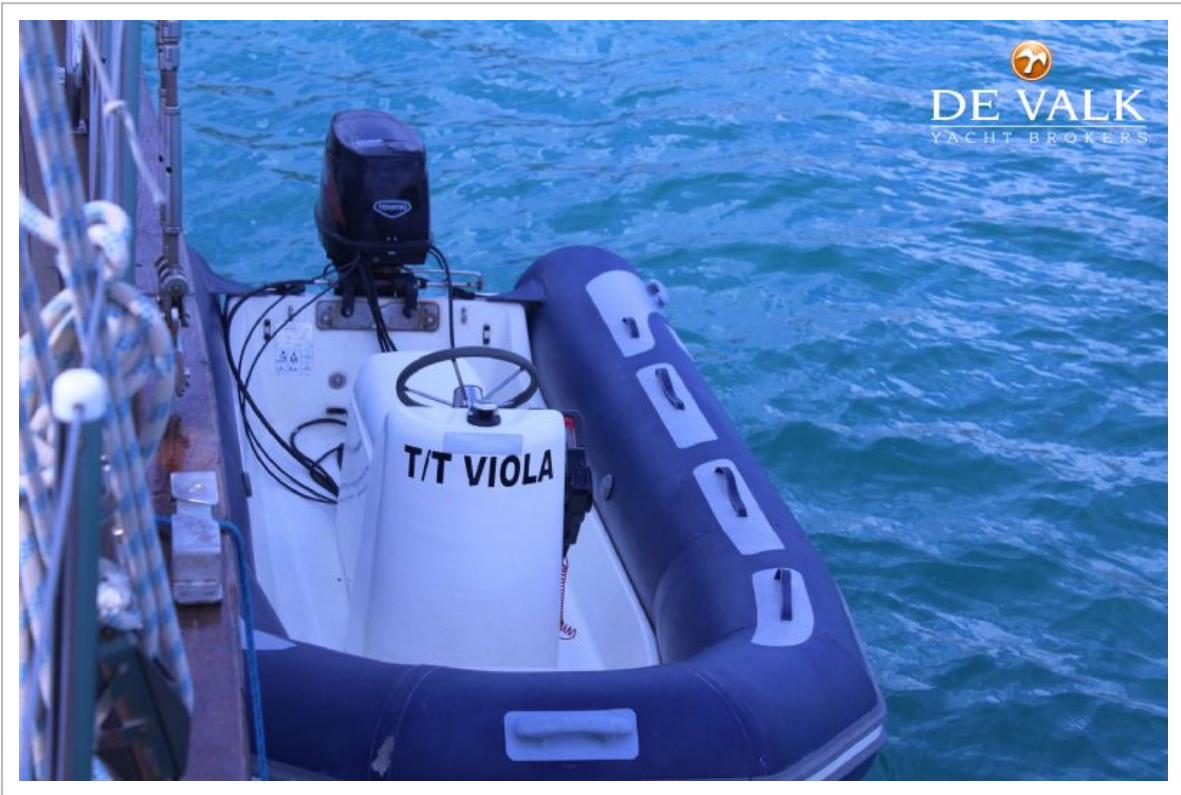
KARATAS KETCH 75



KARATAS KETCH 75



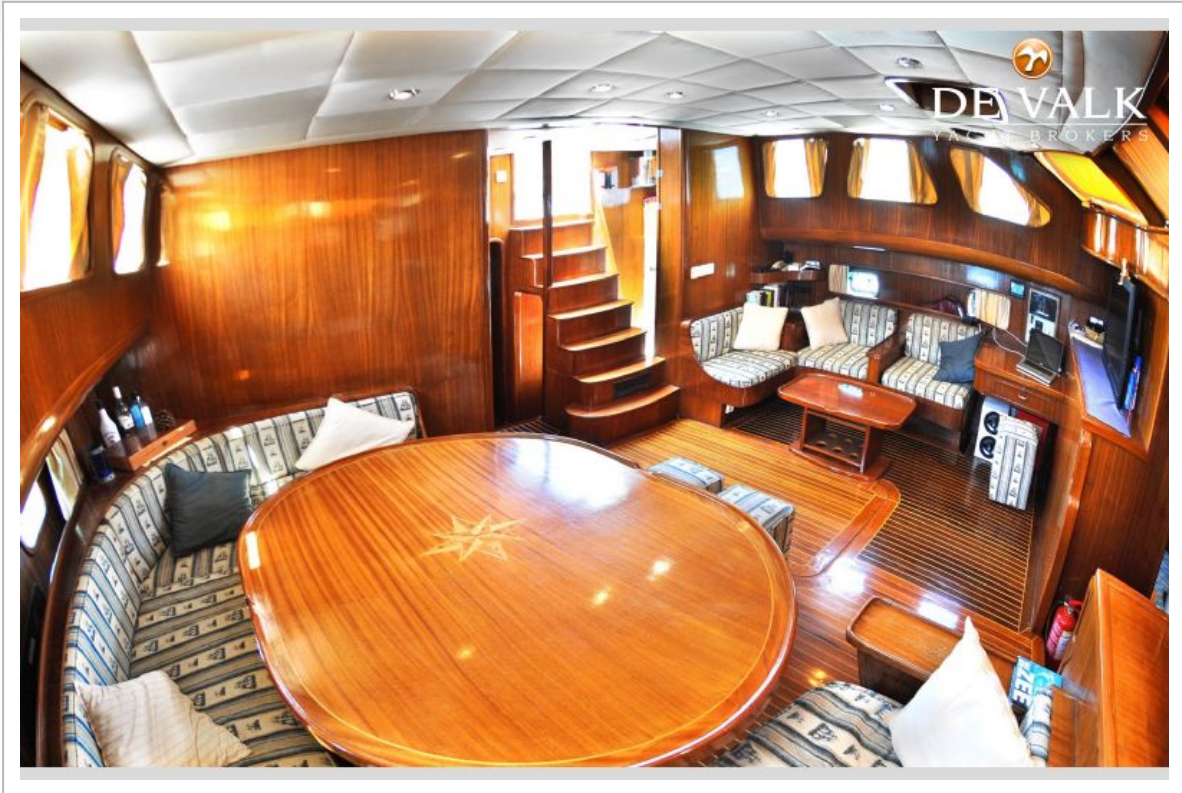
KARATAS KETCH 75



KARATAS KETCH 75



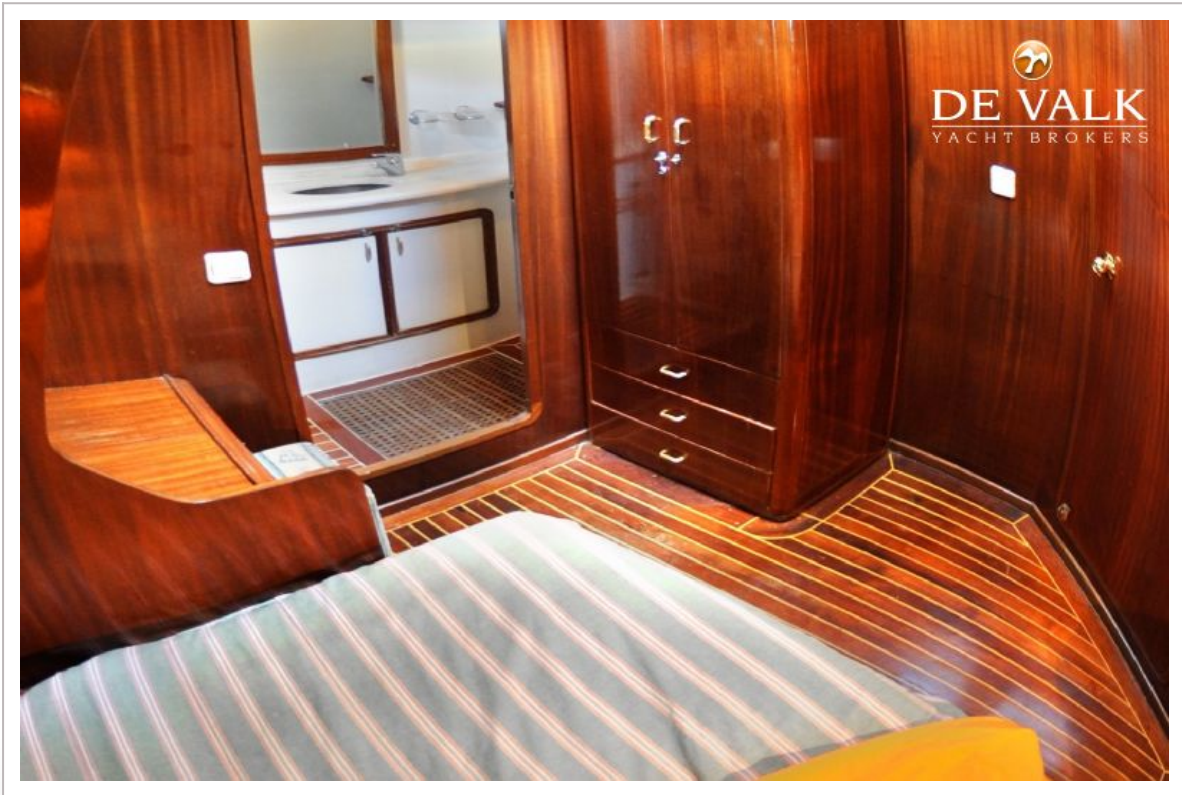
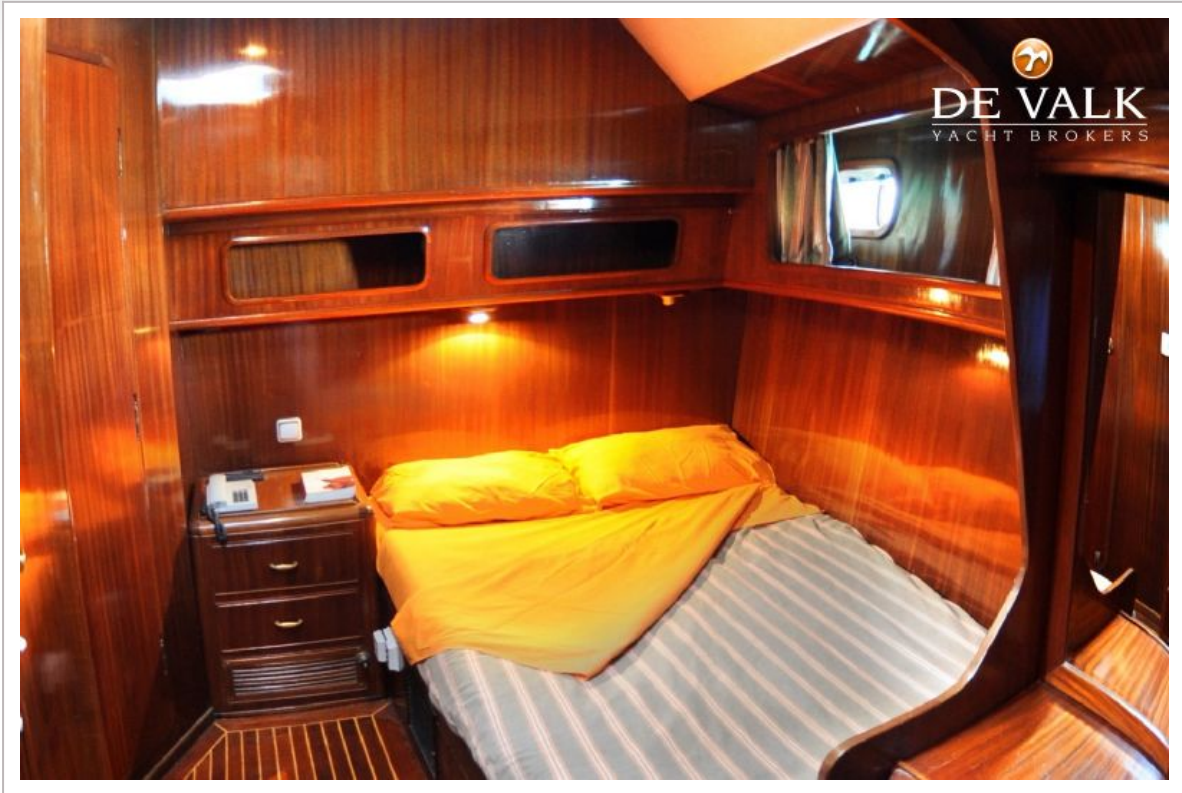
KARATAS KETCH 75



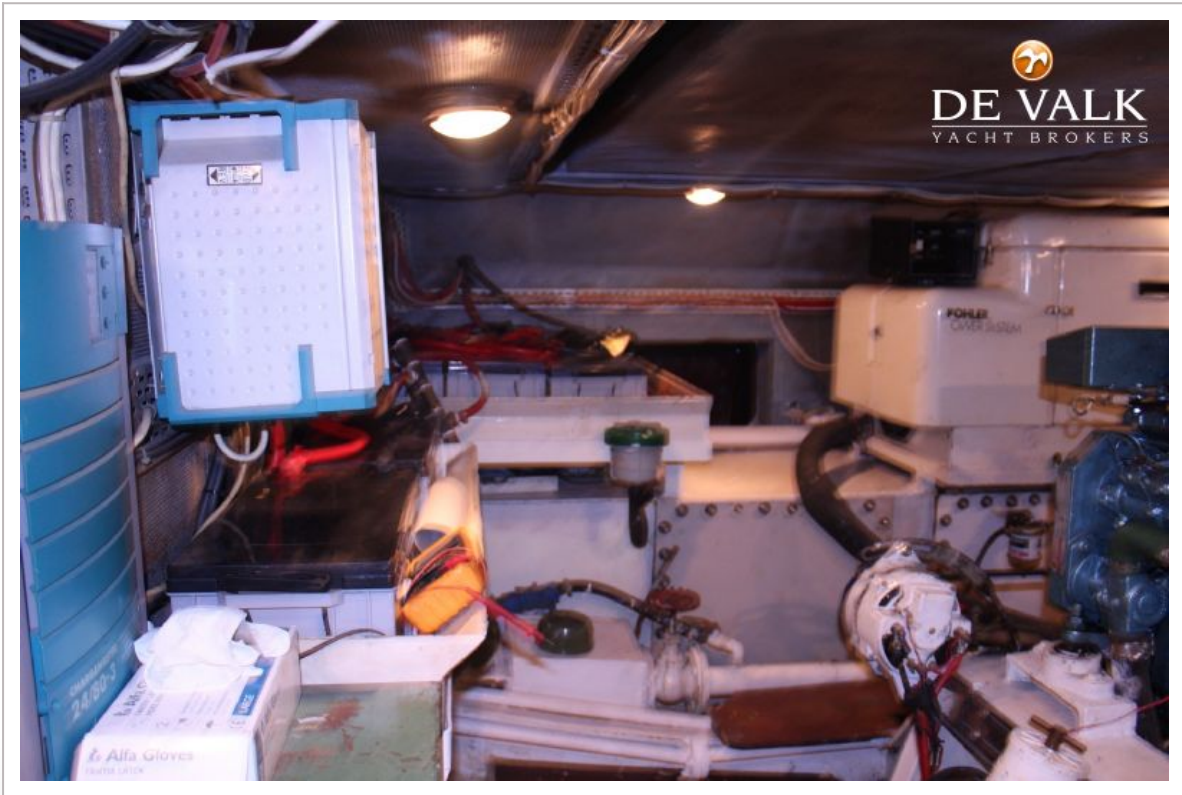
KARATAS KETCH 75



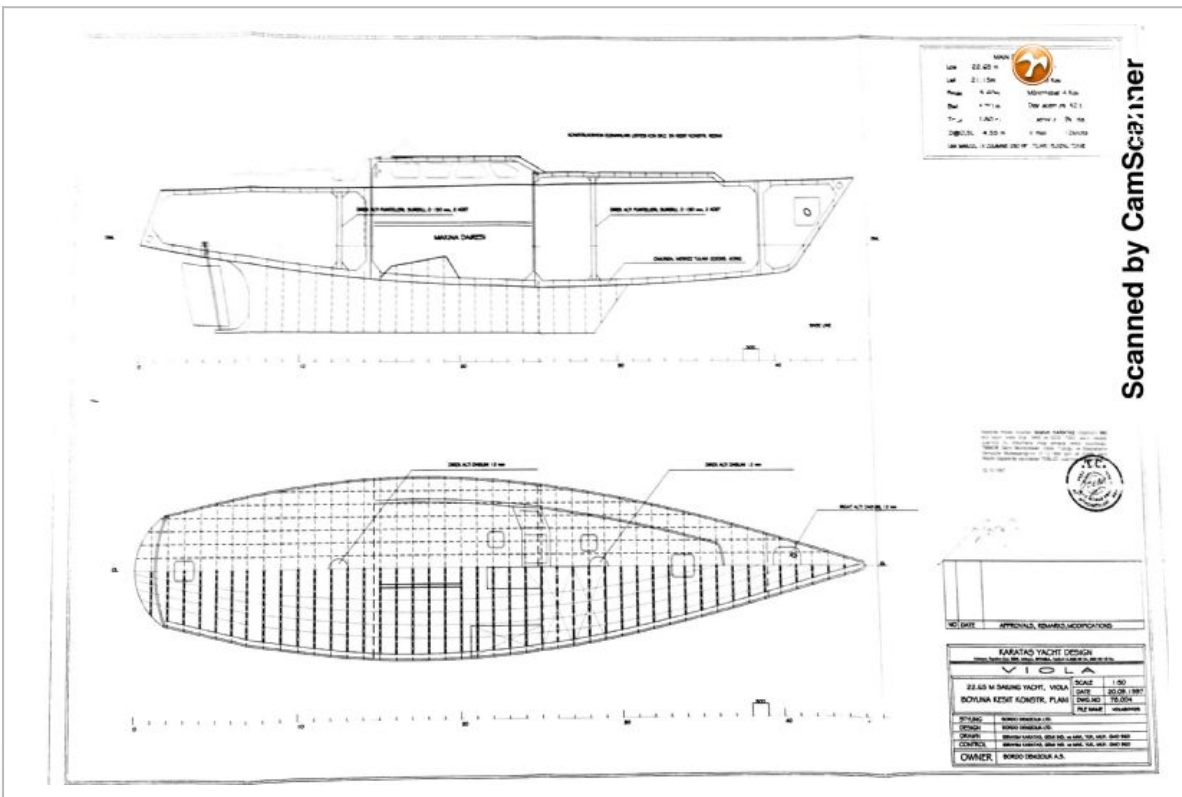
KARATAS KETCH 75



KARATAS KETCH 75



KARATAS KETCH 75



Scanned by CamScanner



