



DE VALK
YACHT BROKERS



STILA 44



DE VALK
YACHT BROKERS

BROKERAGE | CHARTER | BERTHS | FINANCE | INSURANCE | YACHT MANAGEMENT

BROKER'S COMMENTS

The Stila 44 is a beautifully lined, luxurious sailing yacht and is finished beautifully. This R. van der Velden designed a classic-lined and exceptionally comfortable sailing yacht, intended for short-handed cruising and was built in Epoxy and foam core. The stila 44 is in a very good condition and can be visit 7 days a week in Hindeloopen.

Henk Sijbranda

SPECIFICATIONS

Dimensions	13.28 x 3.90 x 1.98 (m)	Builder	Sea Style Shipyards
Built	2007	Cabins	3
Material	Epoxy and foam core	Berths	8
Engine(s)	1 x Volvo Penta D2-55-C diesel	Hp/Kw	55.00 (hp), 40.42 (kw)
Asking price	sold (VAT)	Lying	at sales office

CONTACT

Sales office	De Valk Hindeloopen B.V.	Telephone	+31 514 52 40 00
Address	Oosterstrand 1 8713 JS Hindeloopen NL	E-mail	hindeloopen@devalk.nl

DISCLAIMER

These particulars are given in good faith as supplied but cannot be guaranteed.



GENERAL

Model	STILA 44
Type	sailing yacht
LOA (m)	13,28
LWL (m)	11,30
Beam (m)	3,90
Draft (m)	1,98
Air draft (m)	20,50
Headroom (m)	1,90
Year built	2007
Builder	Sea Style Shipyards
Country	The Netherlands
Designer	Rene van der Velden
Displacement (t)	11,6
Ballast (tonnes)	lead in steel 3,7
CE norm	A
Hull material	epoxy and foam core
Hull colour	blue
Hull thickness (mm)	31mm
Hull shape	round-bilged
Keel type	wing keel
Superstructure material	epoxy and foam core
Superstructure (mm)	26mm
Deck plate thickness (mm)	26mm
Deck material	epoxy and foam core
Deck finish	teak 12mm
Superstructure deck finish	non-skid paint
Cockpit deck finish	teak 12mm
Antifouling (year)	2017
Dorades	4x Stainless steel
Window material	polycarbonate



Deckhatch	4x Stainless steel
Fuel tank (litre)	stainless steel 150
Freshwater tank (litre)	300 + 450 liter epoxy integrated
Level indicator (freshwater)	On 300 liter tank
Blackwater tank (litre)	polyethylene 80
Blackwater tank extraction	deck extraction + uw line
Wheel steering	rack & pinion JEFA stainless steel with leather Ø 1.30
Emergency tiller	yes
Extra info	Keel steel, lead bulb, wings epoxy

ACCOMMODATION

Cabins	3
Berths	8
Interior	mahogany Paint +
Floor	Mahogany with ash stripes
Open cockpit	yes
Saloon	yes
Headroom saloon (m)	1,90
Heating	diesel ducted hot air Webasto air top 5000
Navigation center	yes
Chart table	yes
Aft Cabin	2x
Dinette to convert into berth	yes
Galley	yes
Countertop	wood With extra hard coating
Sink	stainless steel
Cooker	Force 10 - 3 burner
Oven	In Force 10
Gas alarm	yes
Fridge	yes
Hot water system	220V 800W - 55L Boiler



Water pressure system	electrical
Manual and/or foot pump	yes
Owners cabin	double bed
Bed length (m)	2,00
Wardrobe	hanging and shelves
Guest cabin 1	double bed
Bed length (m)	2,06
Wardrobe	hanging and shelves
Guest cabin 2	double bed
Bed length (m)	2,06
Wardrobe	hanging and shelves
Bathroom	shared
Toilet	Jabsco
Toilet system	manual
Wash basin	Stainless steel
Shower	yes
Extra info	Interior Mahogany high gloss with high gloss white walls. Cantalupi lighting and Ticino switchgear

MACHINERY

No of engines	1
Make	Volvo Penta
Type	D2-55-C
HP	55,00
kW	40,42
Fuel	diesel
Year installed	2007
Maximum speed (kn)	8
Cruising speed (kn)	6,5
Consumption (l/hr)	4,5
Range (nm)	216



Engine hours	350 (1-3-2017)
Engine cooling system	freshwater heat exchanger
Drive	shaft
Engine controls	bowden cable
Gearbox	mechanical MS25L
Exhaust	watercooled
Propeller type	VariFold bronze 19"
Propeller blades	3
Propeller shaft material	stainless steel
Shaft lubrication	water
Manual bilge pump	yes
Electric bilge pump	yes
Start battery	1x Mastervolt 120Ah
Service battery	2x 200Ah
Battery monitor	Mastervolt Mass Inverter Charger control
Battery charger/inverter	Mastervolt Mass Combi
Shorepower	with cable
Insulation transformer	Mastervolt
Extra info	Electrical system by Bakker Yacht Electro, Extra alternator 60Ah

NAVIGATION

Compass	Plastimo
Depth sounder	Data from Raymarine ST60+ TRIDATA
Log	Data from Raymarine ST60 TRIDATA
Windset	Raymarine ST60+ WIND and CH WIND
Repeater	Inside Raymarine ST60+ GRAPHIC
VHF	Raymarine Ray 240E
Autopilot	Raymarine ST 6002 SmartPilot
Rudder angle indicator	On autopilot
Radar/GPS/plotter	Raymarine C80



Navtex	ICS Nav6
Electronic chart(s)	From 2007

EQUIPMENT

Sprayhood	with extension
Winter cover	yes
Cockpit table	yes
Bathing platform	collapsible
Boarding ladder	stainless steel
Deck shower	yes
Anchor	Delta 20kg
Anchor chain	10mm - 50mtr
Windlass	electrical Muir VR2200 vertical
Deck wash	front and rear with spray gun and hose
Sea railing	wire Stainless steel
Grab rail (superstructure)	stainless steel
Railing side opening gates	yes
Pushpit	yes
Pulpit	yes
Lifebuoy	yes
Radar reflector	yes
Fenders	yes
Mooring lines	yes
Spare parts	yes
Radio-cd player	Pioneer
Speakers in salon	yes
Fire extinguisher	yes
Extinguisher in engine room	yes
Auto extinguisher system	yes

RIGGING



Rigging	fractional
Standing rigging	wire
Brand mast	Holland Spar
Material mast	aluminium coated
Spreaders	2 pair
Keel stepped mast	yes
Mainsail	51 m ² - 2007
Mainsail cover	yes
Battcars	yes
Fully battened mainsail	yes
High aspect	40m ²
Gennaker	115m ²
Self tacking jib installation	yes
Reefing System	slabreefing
Backstay adjuster	hydraulic 2x Holmatro
Boomvang	gasspring Forespar
Secondary sheet winch	2x Andersen 40ST
Genoa sheetwinches	2x Andersen 46STE electric
Halyard winches	1x Andersen 40ST on mast
Gennaker pole	aluminium Holland Spar



STILA 44



STILA 44





STILA 44







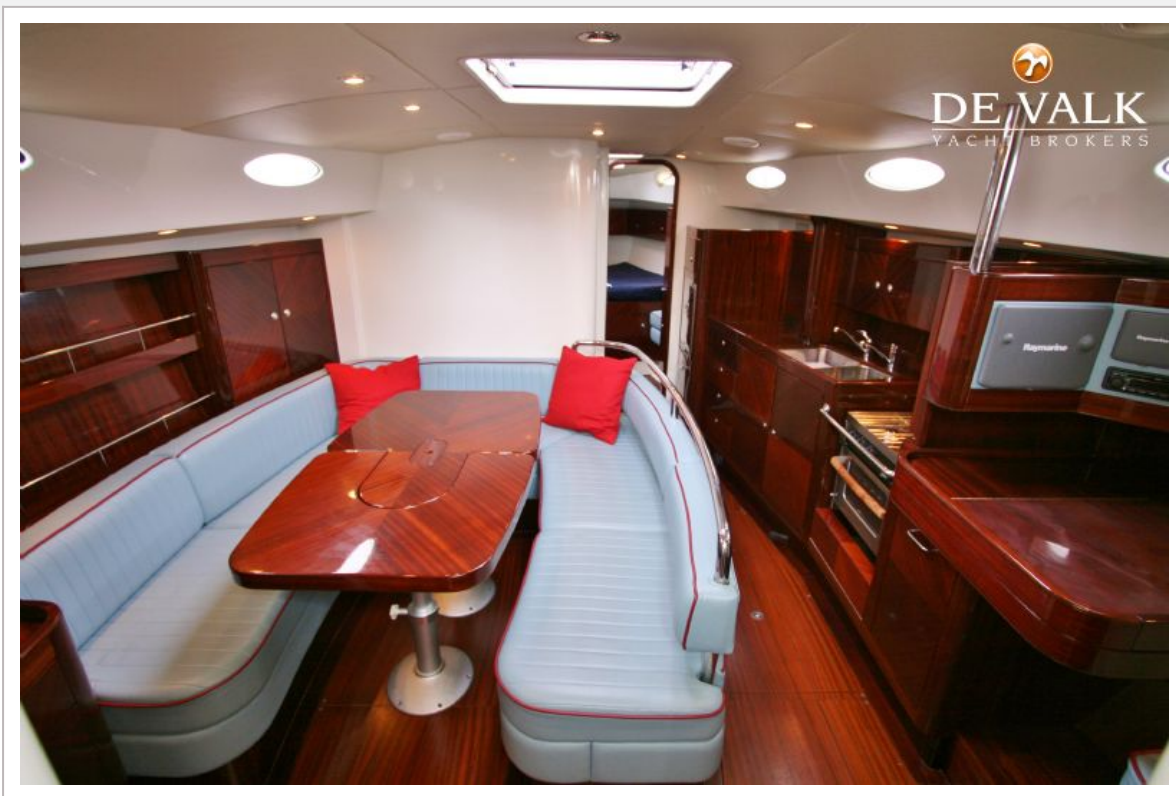
STILA 44





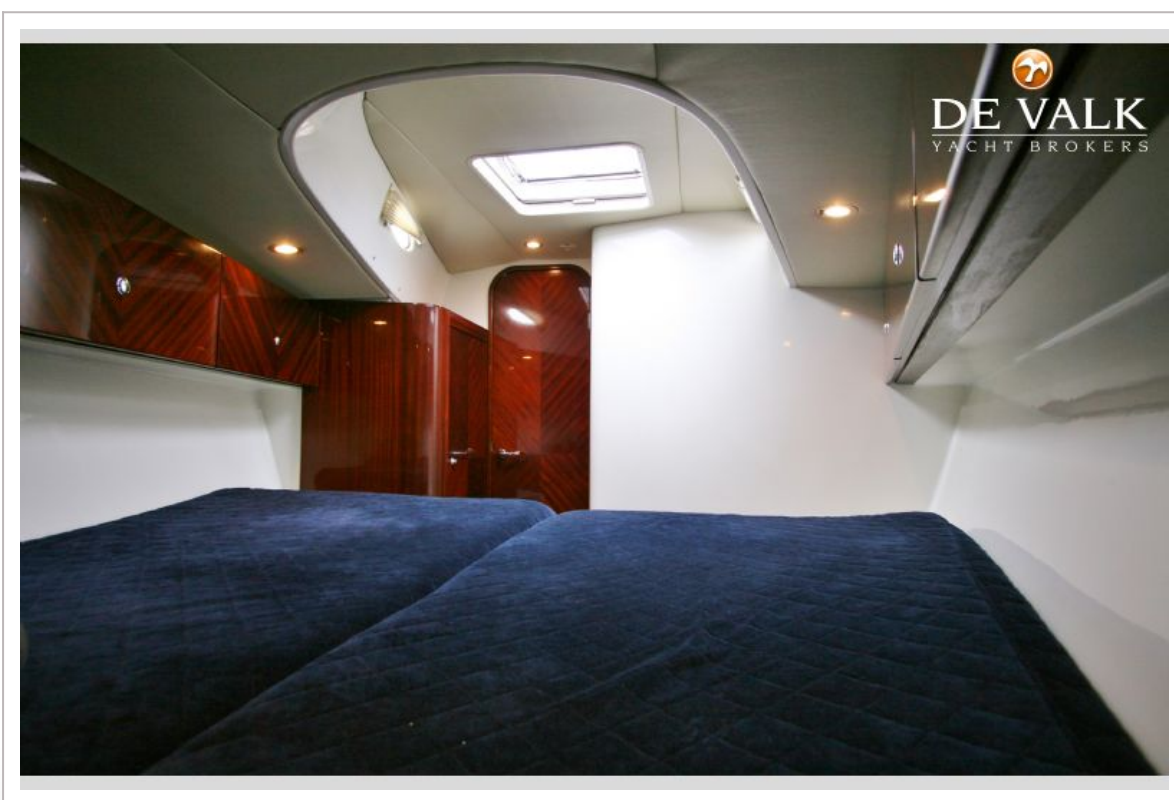
STILA 44





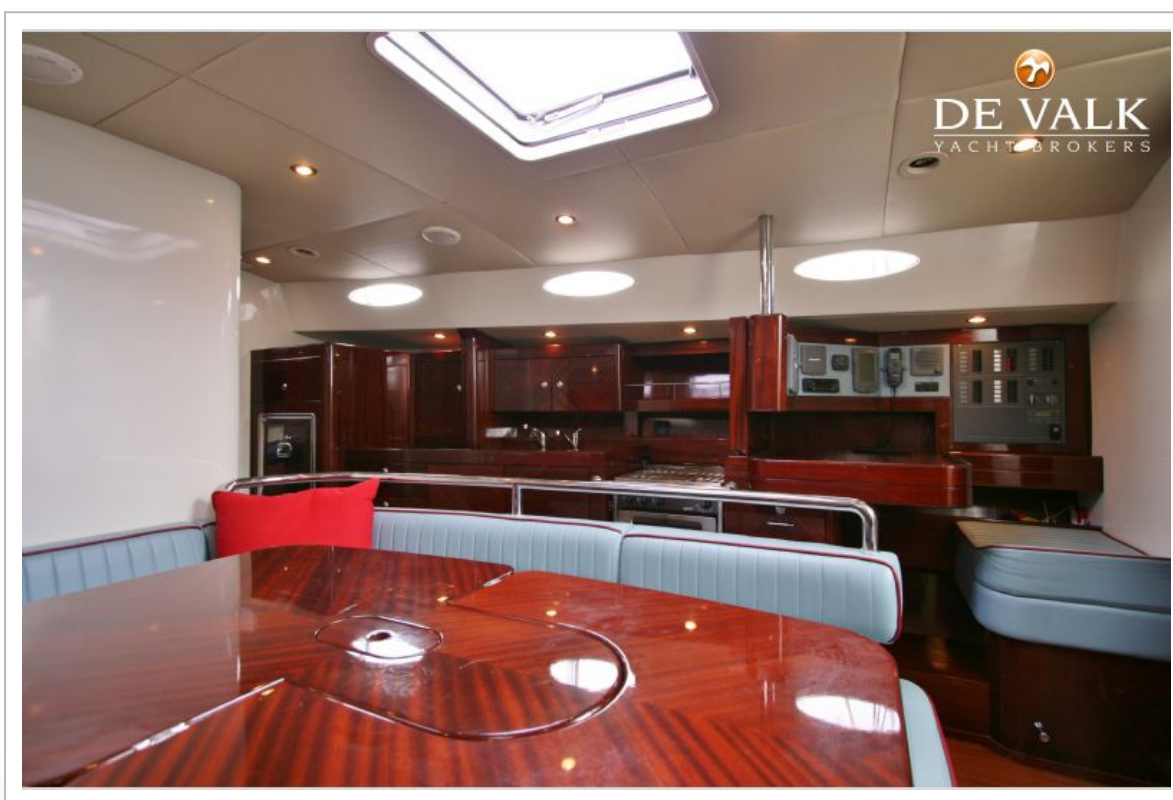
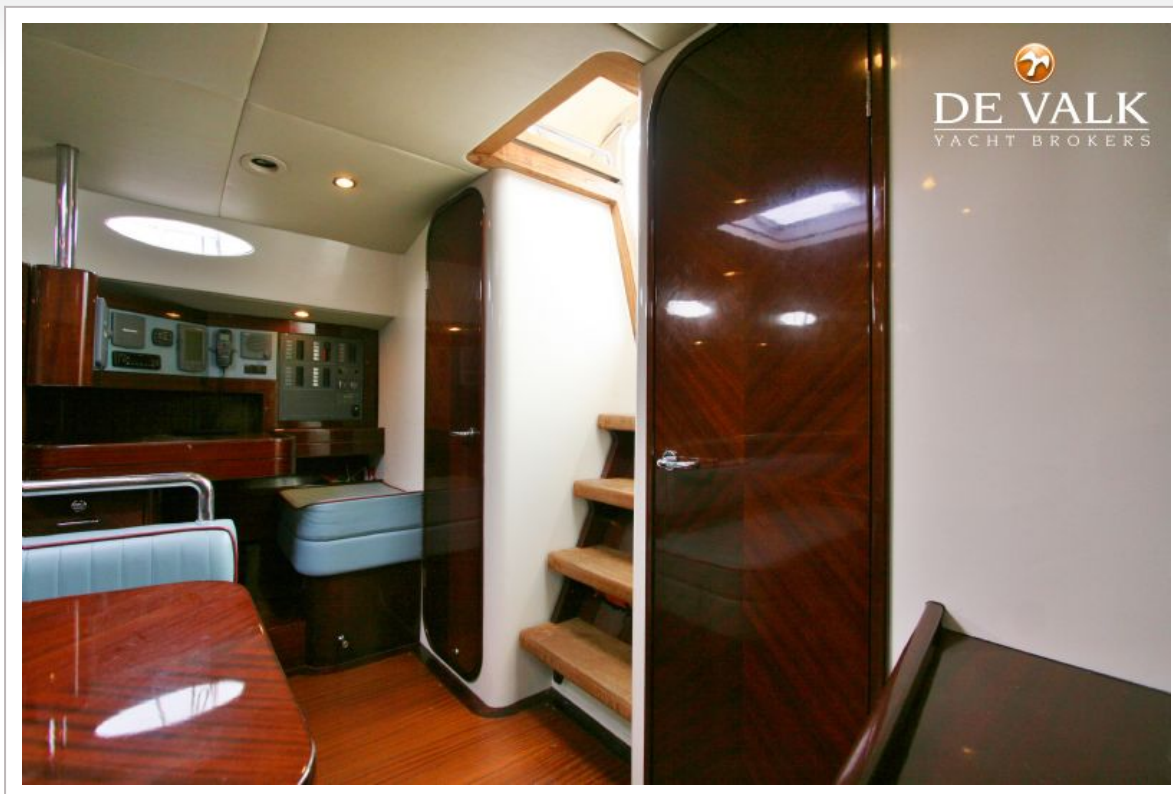












STILA 44

