



DE VALK
YACHT BROKERS



EUROTRAWLER 17.50 FLY BRIDGE



DE VALK
YACHT BROKERS

EUROTRAWLER 17.50 FLY BRIDGE

BROKER'S COMMENTS

Uncompromising Dutch steel trawler yacht. Designed and finished as a professional seagoing ship (CE-A) with many extras, she has been kept in excellent condition throughout and serves her owner couple very well. Below deck there is a comfortable arrangement with three cabins and the deck level is on a flat floor. General access is therefore easy and uninhibited. Would you like to travel Europe in style and comfort? Then this Eurotrawler should be on your wish list!

Hartmut Ross

SPECIFICATIONS

Dimensions	17.50 x 5.20 x 1.40 (m)	Builder	Scheepswerf'De Toekomst' BV
Built	2006	Cabins	3
Material	Steel	Berths	6
Engine(s)	2 x Iveco 8061 M14 diesel	Hp/Kw	2 x 145.00 (hp), 106.58 (kw)
Asking price	sold (VAT)	Lying	contact Kiel

CONTACT

Sales office	De Valk Kiel	Telephone	+49 1712312133
Address	Hermann Rennerstrasse 12 22609 Hamburg DE	E-mail	kiel@devalk.nl

DISCLAIMER

These particulars are given in good faith as supplied but cannot be guaranteed.



EUROTRAWLER 17.50 FLY BRIDGE

GENERAL

Model	EUROTRAWLER 17.50 FLY BRIDGE
Type	motor yacht
LOA (m)	17,50
LWL (m)	17,05
Beam (m)	5,20
Draft (m)	1,40
Headroom (m)	1,95
Year built	2006
Launched	2006
Builder	Scheepswerf'De Toekomst' BV
Country	The Netherlands
Displacement (t)	43
CE norm	A
Hull material	steel
Hull colour	Beige
Hull thickness (mm)	8-10
Keel type	
Superstructure material	steel
Superstructure (mm)	6
Rubbing strake	stainless steel
Deck material	steel
Deck finish	synthetic teak
Cockpit deck finish	synthetic teak
Antifouling (year)	2020
Window frame	aluminium
Window material	double glazing
Deckhatch	2
Portholes	
Insulation	airfoil
Flybridge	yes



EUROTRAWLER 17.50 FLY BRIDGE

Radar arch	collapsible
Mast can be lowered	electric
Fuel tank (litre)	5000
Fuel tank 2 (litre)	450
Level indicator (fuel tank)	yes
Level indicator (daytank)	yes
Freshwater tank (litre)	2 x 1000
Level indicator (freshwater)	yes
Blackwater tank (litre)	750
Level indicator (blackwater)	yes
Wheel steering	
Inside helm position	yes
Flybridge helm position	
Emergency tiller	yes
Extra info	The tanks were cleaned in 2016

ACCOMMODATION

Cabins	3
Berths	6
Interior	teak
Floor	woodprint
Open cockpit	yes
Aft deck	yes
Deck saloon	yes
Saloon	yes
Headroom saloon (m)	1,95
Heating	Webasto
Air-conditioning	
Navigation center	yes
Chart table	yes
Dining room	yes



EUROTRAWLER 17.50 FLY BRIDGE

Opening door to aft deck	yes
Galley	yes
Countertop	granite
Sink	stainless steel
Cooker	ceramic 4
Extractor	yes
Microwave/oven combi	Siemens
Fridge	yes
Freezer	yes
Wine cooler	yes
Hot water system	
Water pressure system	
Dishwasher	Can be built in
Owners cabin	double bed
Bed length (m)	2,05
Wardrobe	walk-in closet
Bathroom	separate
Toilet	en suite
Toilet system	electric
Wash basin	in the bathroom
Shower	separate
Guest cabin 1	French bed
Bed length (m)	2,05
Wardrobe	hanging and drawers
Bathroom	separate
Toilet	en suite
Toilet system	electric
Wash basin	in the bathroom
Shower	separate
Guest cabin 2	bunk bed
Bed length (m)	2,00
Wardrobe	drawers and shelves



EUROTRAWLER 17.50 FLY BRIDGE

Washing machine	Siemens
Dryer	Siemens
Flybridge	yes

MACHINERY

No of engines	2
Make	Iveco
Type	8061 M14
HP	145
kW	106.58
Fuel	diesel
Year installed	2006
Maximum speed (kn)	8,5
Cruising speed (kn)	7,5
Consumption (l/hr)	7
Engine hours	1500
Engine cooling system	
Drive	shaft
Shaft seal	2017outdated
Bowthruster	electric 380 V
Sternthruster	electric 380 V
Exhaust	
Propeller blades	4
Electric bilge pump	yes
Bilge alarm	yes
Electrical installation	12 + 24 + 230 + 380 Volt
Generator	Iveco 70 Kw
Running hours generator	Ca.1200
Start battery	4 x 200 Amp.
Service battery	10 x 1100 Amp
Battery monitor	yes



EUROTRAWLER 17.50 FLY BRIDGE

Battery charger	yes
Inverter	2 x
Shorepower	with cable 230 V + 380 V

NAVIGATION

Compass	yes
Compass on flybridge	yes
Electric compass	yes
Depth sounder	Simrad IS 15
Depth sounder/log	Simrad IS 15
Log	Simrad IS 15
Windset	Simrad IS 15
VHF	Icon
Autopilot	Simrad AP 25
Rudder angle indicator	yes
Radar	Simrad
Plotter/GPS	Simrad CX 54
Radar/GPS/plotter	Simrad CX 54
Navtex	yes
Wifi antenna	yes
Electronic chart(s)	yes
AIS receiver	yes
Radio receiver	yes
EPIRB	yes
Camera	yes
Navigation lights	yes
Searchlight	yes
Loudhailer	yes

EQUIPMENT

Fixed windscreen	yes
------------------	-----



EUROTRAWLER 17.50 FLY BRIDGE

Window cover	yes
Cockpit cushions	yes
Cockpit table	yes
Cockpit chairs	yes
Bathing platform	yes
Boarding ladder	aluminum
Transom door	yes
Deck shower	yes
Anchor	Bruce
Anchor chain	70 Meter
Windlass	electrical
Dinghy	rigid inflatable
Outboard	25 PS Yamaha
Davits	stainless steel
Deck crane	manual
Sea railing	stainless steel
Railing side opening gates	yes
Pushpit	yes
Life raft	container
Life raft (pers)	container 4
Last life raft survey	2020
Lifebuoy	yes
Wiper	yes
Horn	electric
Fenders	yes
Mooring lines	yes
Spare parts	yes
Tools	yes
TV	Samsung extendable TV
TV receiver	yes
Satellite	yes
Radio-cd player	yes

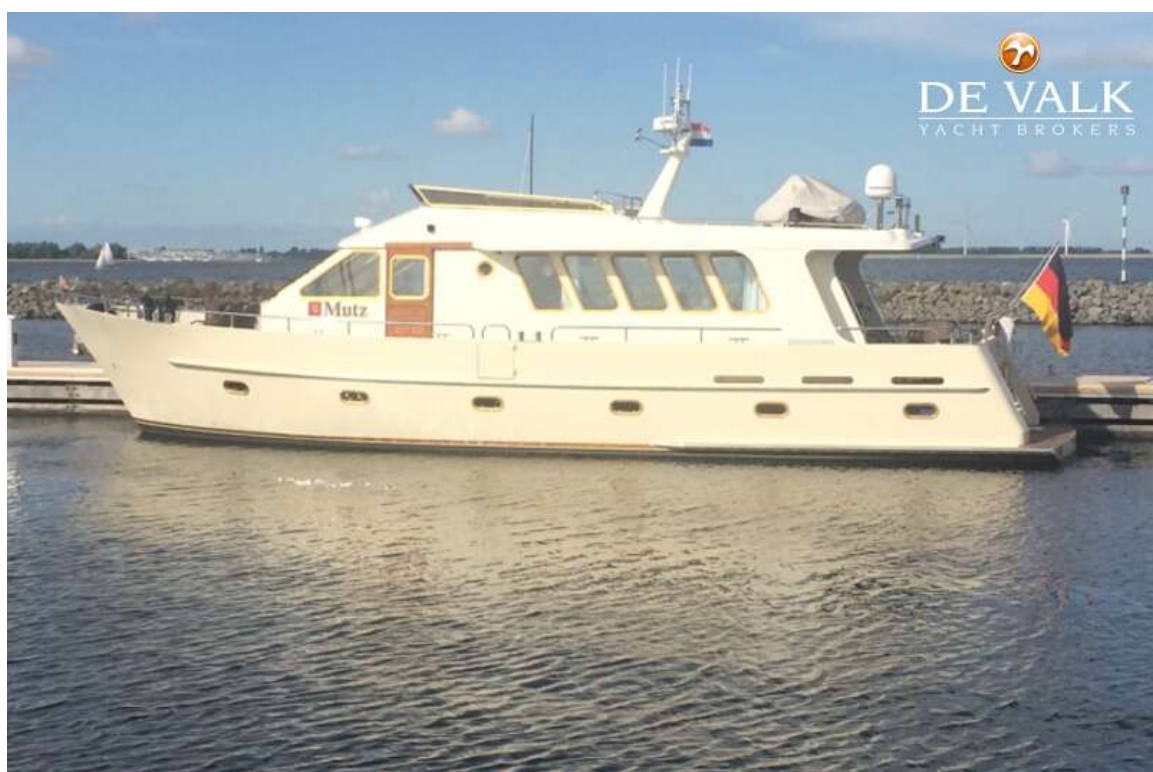


EUROTRAWLER 17.50 FLY BRIDGE

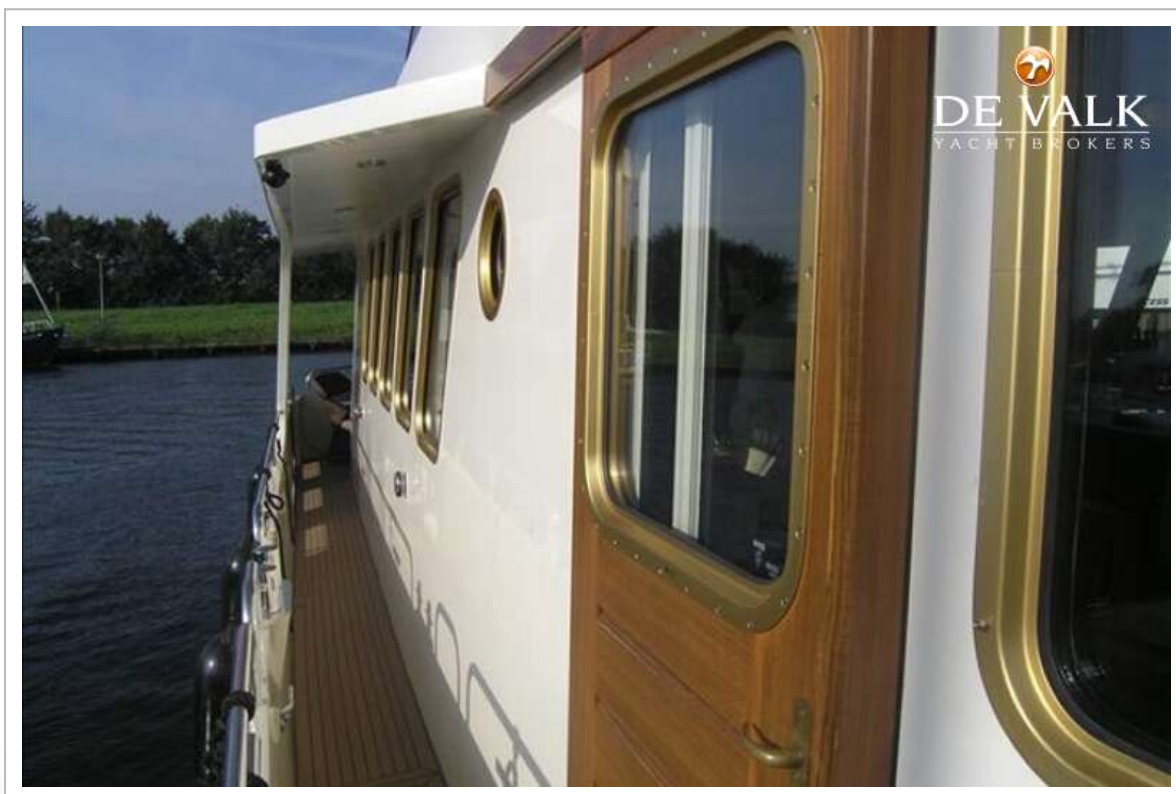
Cockpit speakers	yes
Speakers in salon	yes
Clock - barometer	yes
Fire extinguisher	5
Latest extinguisher survey	2018/19
Extinguisher in engine room	yes
Auto extinguisher system	yes



EUROTRAWLER 17.50 FLY BRIDGE



EUROTRAWLER 17.50 FLY BRIDGE



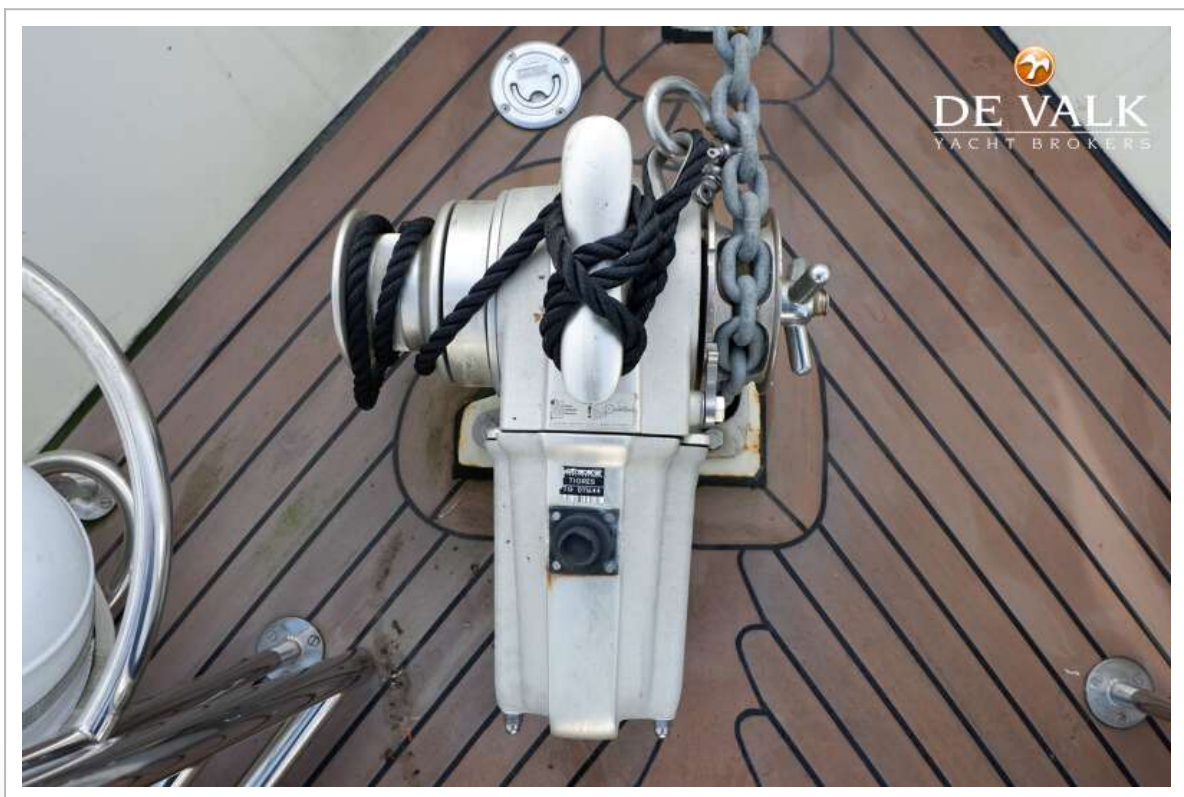
EUROTRAWLER 17.50 FLY BRIDGE



EUROTRAWLER 17.50 FLY BRIDGE



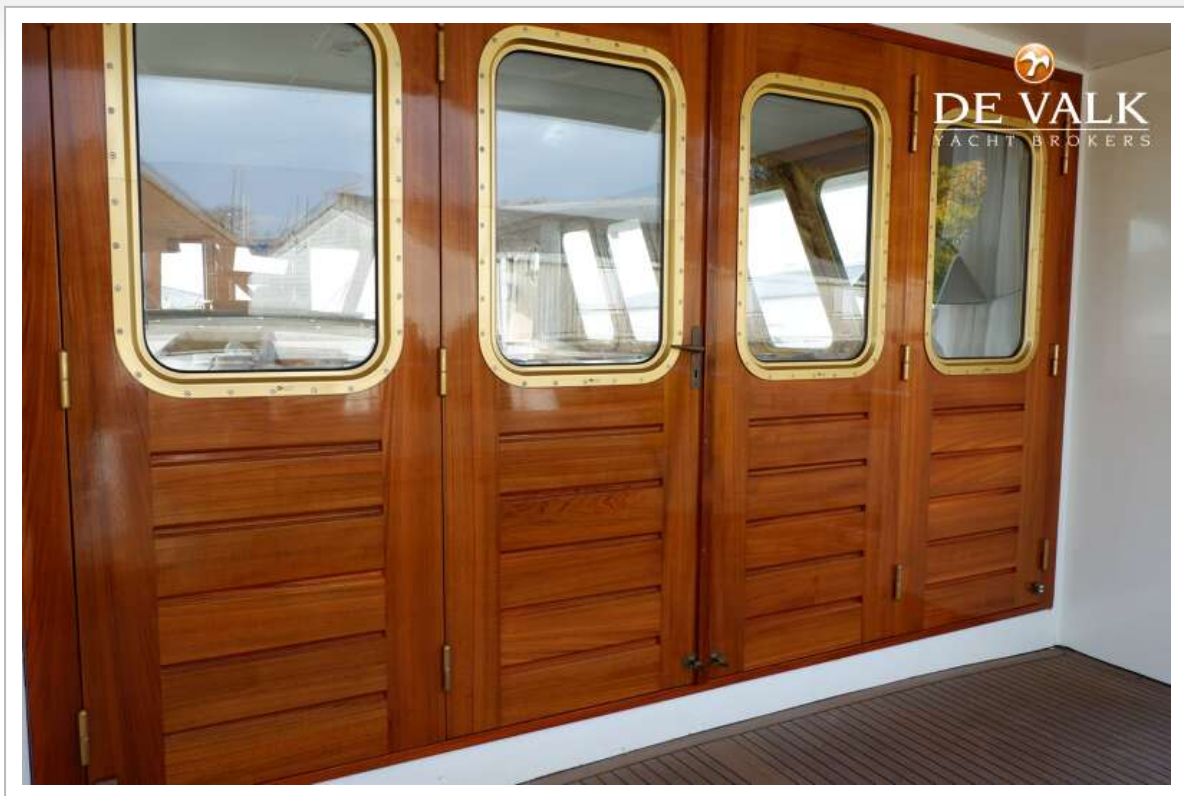
EUROTRAWLER 17.50 FLY BRIDGE



EUROTRAWLER 17.50 FLY BRIDGE



EUROTRAWLER 17.50 FLY BRIDGE



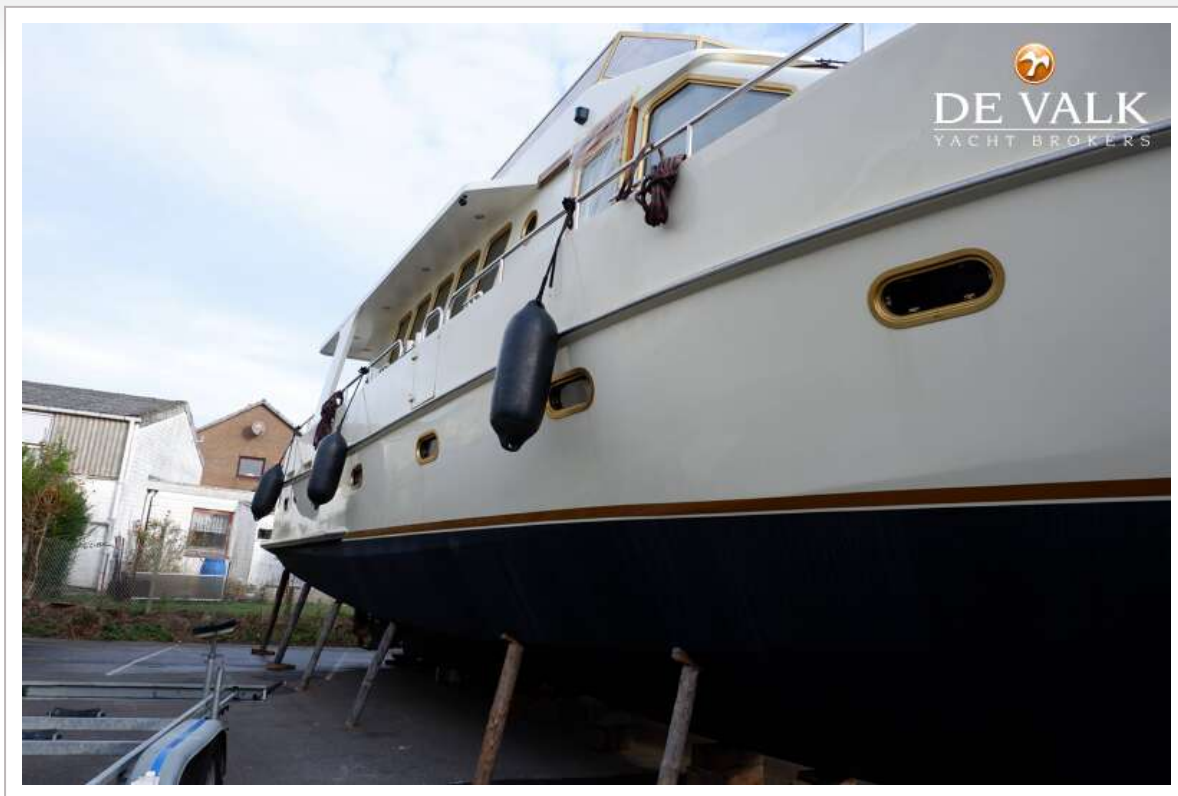
EUROTRAWLER 17.50 FLY BRIDGE



EUROTRAWLER 17.50 FLY BRIDGE



EUROTRAWLER 17.50 FLY BRIDGE



EUROTRAWLER 17.50 FLY BRIDGE



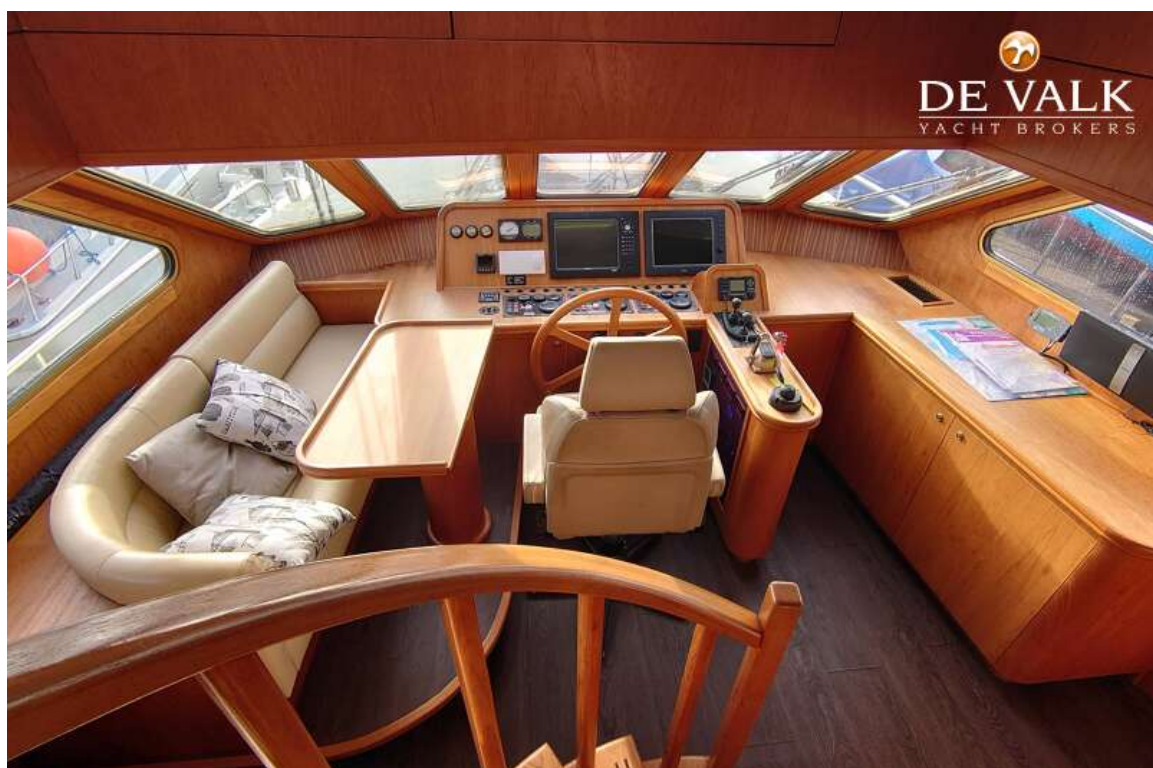
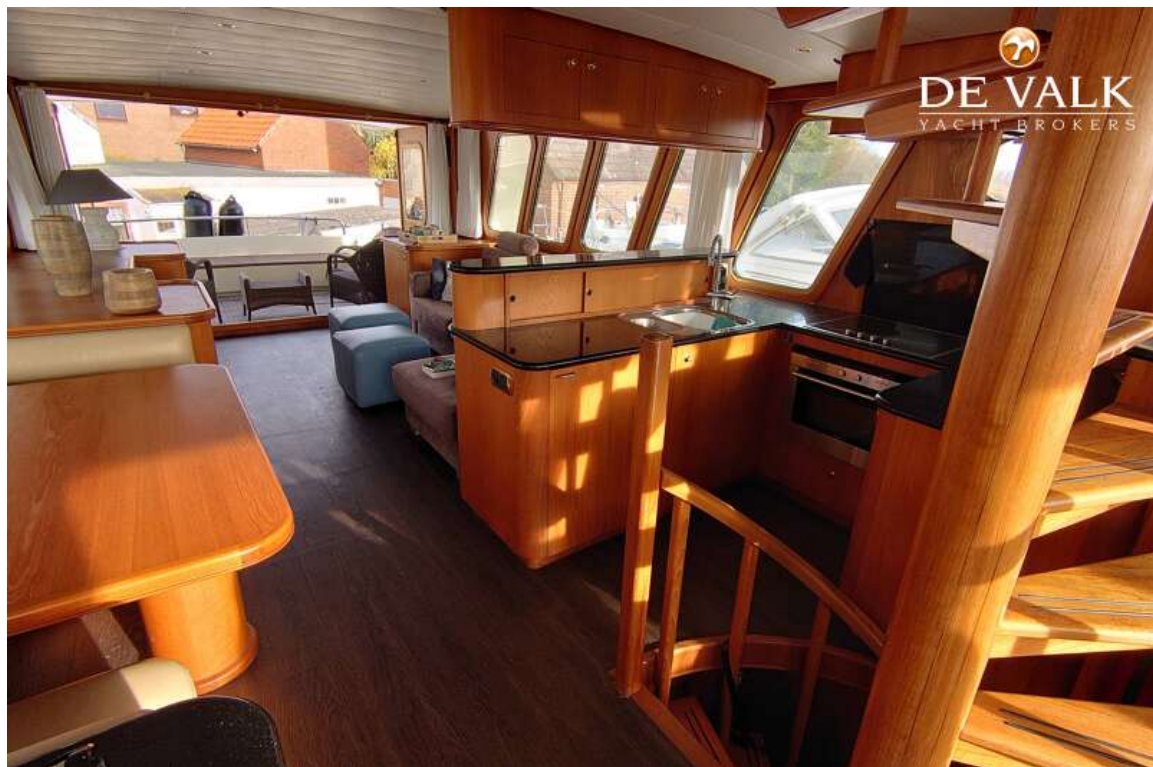
EUROTRAWLER 17.50 FLY BRIDGE



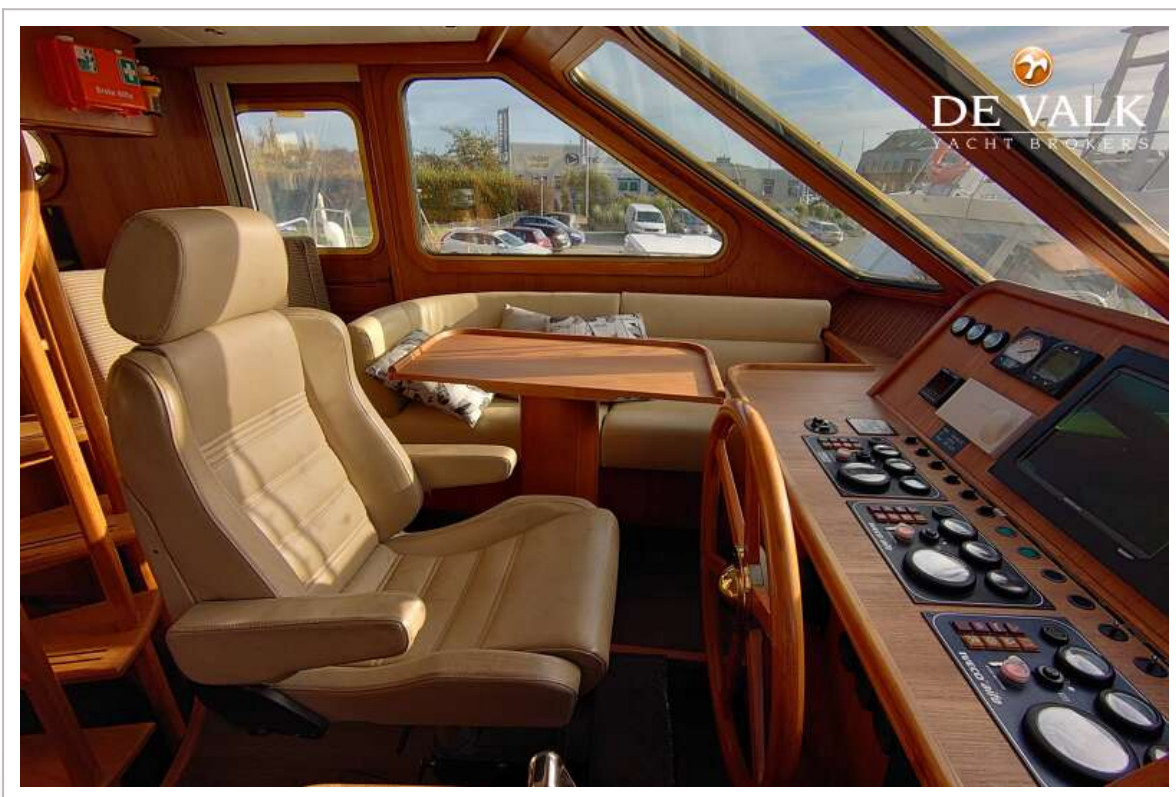
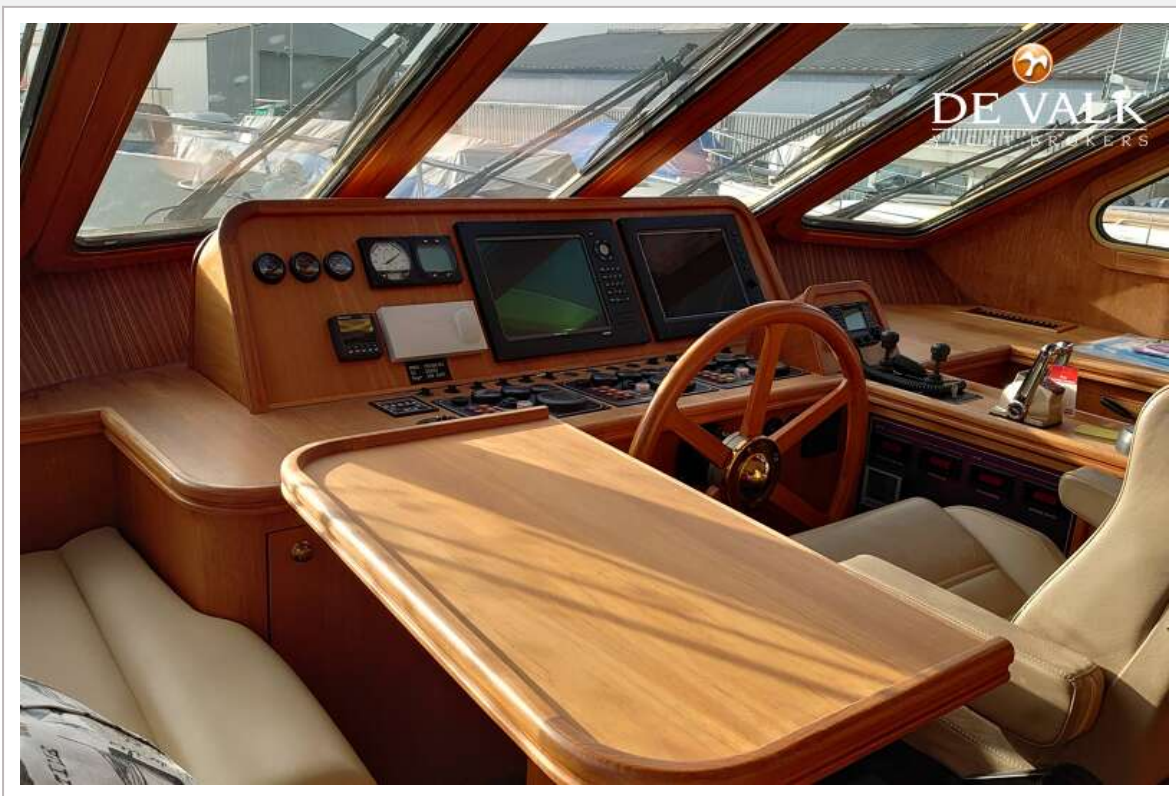
EUROTRAWLER 17.50 FLY BRIDGE



EUROTRAWLER 17.50 FLY BRIDGE



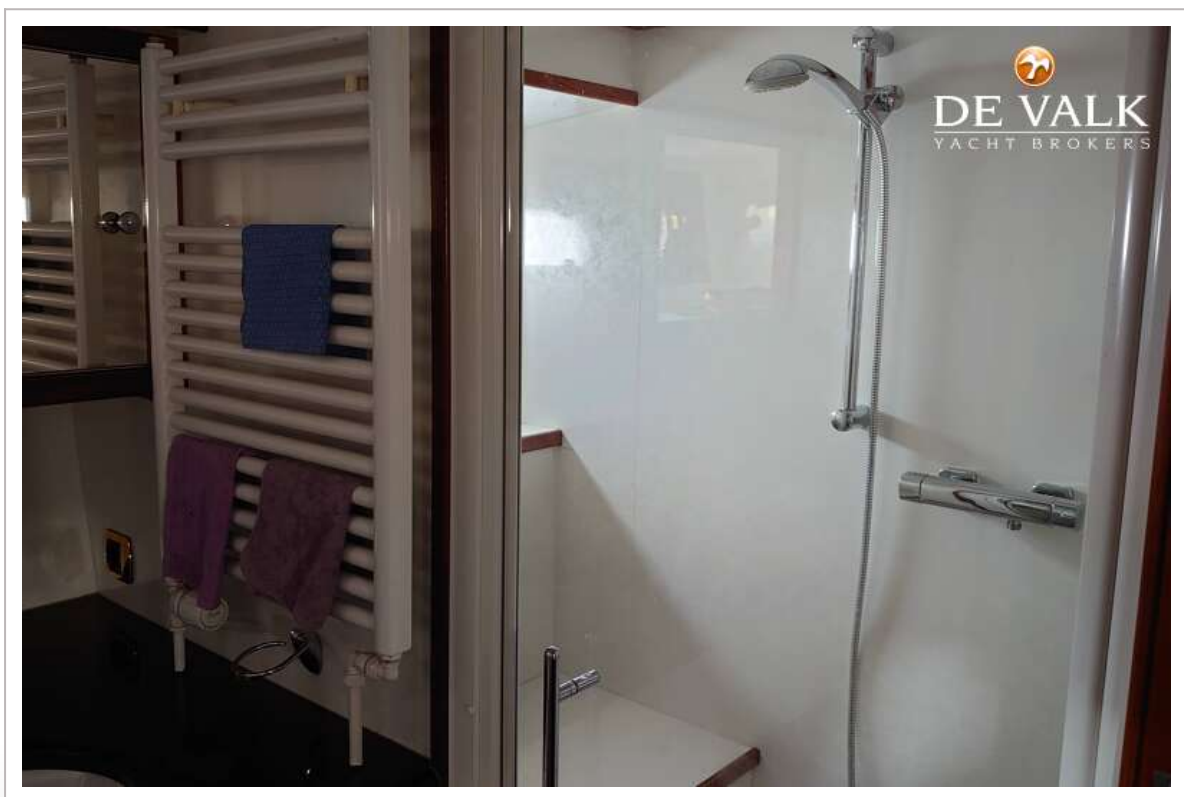
EUROTRAWLER 17.50 FLY BRIDGE



EUROTRAWLER 17.50 FLY BRIDGE



EUROTRAWLER 17.50 FLY BRIDGE



EUROTRAWLER 17.50 FLY BRIDGE



EUROTRAWLER 17.50 FLY BRIDGE

