



BARKAS 1150 OK



BARKAS 1150 OK

BROKER'S COMMENTS

This very well maintained Barkas was buildt by the Dutch Bouma shipyard in 2009. She is loaded with options and can be visited at our Loosdrecht facility.

Koen Mulder

SPECIFICATIONS

Dimensions	11.50 x 3.95 x 0.92 (m)	Builder	Bouma
Built	2009	Cabins	2
Material	Steel	Berths	4
Engine(s)	1 x Nanni 5-250TDI diesel	Hp/Kw	85.00 (hp), 62.48 (kw)
Asking price	sold (VAT)	Lying	at sales office

CONTACT

Sales office	De Valk Loosdrecht B.V.	Telephone	+31 (0)35 582 90 30
Address	't Breukeleveense Meentje 6 1231LM Loosdrecht / Wijdmeren NL	E-mail	loosdrecht@devalk.nl

DISCLAIMER

These particulars are given in good faith as supplied but cannot be guaranteed.



GENERAL

Model	BARKAS 1150 OK
Type	motor yacht
LOA (m)	11,50
Beam (m)	3,95
Draft (m)	0,92
Air draft (m)	2,45
Headroom (m)	1,97
Year built	2009
Builder	Bouma
Country	The Netherlands
Designer	Lammert Huitema
Displacement (t)	13
CE norm	C
Hull material	steel
Hull shape	hard chine
Superstructure material	steel
Rubbing strake	fender rope
Deck material	steel
Deck finish	non-skid paint
Superstructure deck finish	paint
Cockpit deck finish	teak
Window frame	aluminium
Window material	double glazing
Portholes	yes
Mast can be lowered	electric
Fuel tank (litre)	steel 650
Level indicator (fuel tank)	yes
Freshwater tank (litre)	stainless steel 750
Level indicator (freshwater)	yes
Blackwater tank (litre)	stainless steel 125



Level indicator (blackwater)	yes
Blackwater tank extraction	pump
Wheel steering	hydraulic
Inside helm position	yes

ACCOMMODATION

Cabins	2
Berths	4
Interior	teak
Floor	teak
Aft deck	yes
Saloon	yes
Heating	diesel ducted hot air Eberspracher airtronic
Opening door to aft deck	yes
Galley	yes
Countertop	Duropol
Sink	stainless steel
Cooker	calor gas Smev 3-Burners
Extractor	yes
Microwave/oven combi	Sharp double grill hot air
Fridge	Waeco coolmatic mdc
Freezer	Waeco coolmatic mdc
Hot water system	220V + engine
Water pressure system	electrical
Owners cabin	French bed
Wardrobe	hanging and shelves
Bathroom	shared
Toilet	shared
Toilet system	electric Tecma
Wash basin	in the bathroom
Shower	shared



BARKAS 1150 OK

Guest cabin 1	double bed
Wardrobe	hanging and shelves
Bathroom	shared
Toilet	shared
Toilet system	electric Tecma
Wash basin	in the bathroom
Shower	shared
Washing machine	Aquamatic Aqua1000T 3,5Kg
Extra info	Quooker hot water

MACHINERY

No of engines	1
Make	Nanni
Type	5-250TDI
HP	85,00
kW	62,48
Fuel	diesel
Year installed	2009
Cruising speed (kn)	8
Engine hours	510
Engine cooling system	freshwater heat exchanger
Drive	shaft
Engine controls	bowden cable
Gearbox	hydraulic ZF Hurth Marine ZF25A - 2.7
Bowthruster	electric Side-Power SE 80/185T
Propeller type	fixed
Shaft lubrication	water
Electric bilge pump	Rule 1100GPH
Start battery	1x 12v 100Ah
Service battery	2x 12v 200Ah
Bowthruster battery	1 x 100Ah 12V Semi-Tractie



Battery monitor	Mastervolt BTM-III
Battery charger/inverter	Victron Phoenix multi plus 12V 3000VA 120AMP
Shorepower	with cable

NAVIGATION

Depth sounder	Raymarine ST60+
VHF	Raymarine
Autopilot	Raymarine ST6002 with remote control
Plotter/GPS	Raymarine hybrid touch
Camera	yes
Navigation lights	yes

EQUIPMENT

Cockpit cushions	yes
Bathing platform	yes
Boarding ladder	stainless steel
Deck shower	yes
Anchor	Pool
Anchor chain	yes
Windlass	electrical Lofrans tigers 1200W 12V
Deck wash	yes
Davits	stainless steel
Davits controls	manual
Sea railing	stainless steel
Grab rail (superstructure)	stainless steel
Wiper	yes
Horn	electric
Fenders	yes
Mooring lines	yes
TV	Sony Bravia
TV receiver	Funke V4



Radio-cd player

Sony MEX-DV1000

Speakers in salon

Pioneer

Extinguisher in engine room

yes



BARKAS 1150 OK



BARKAS 1150 OK



BARKAS 1150 OK



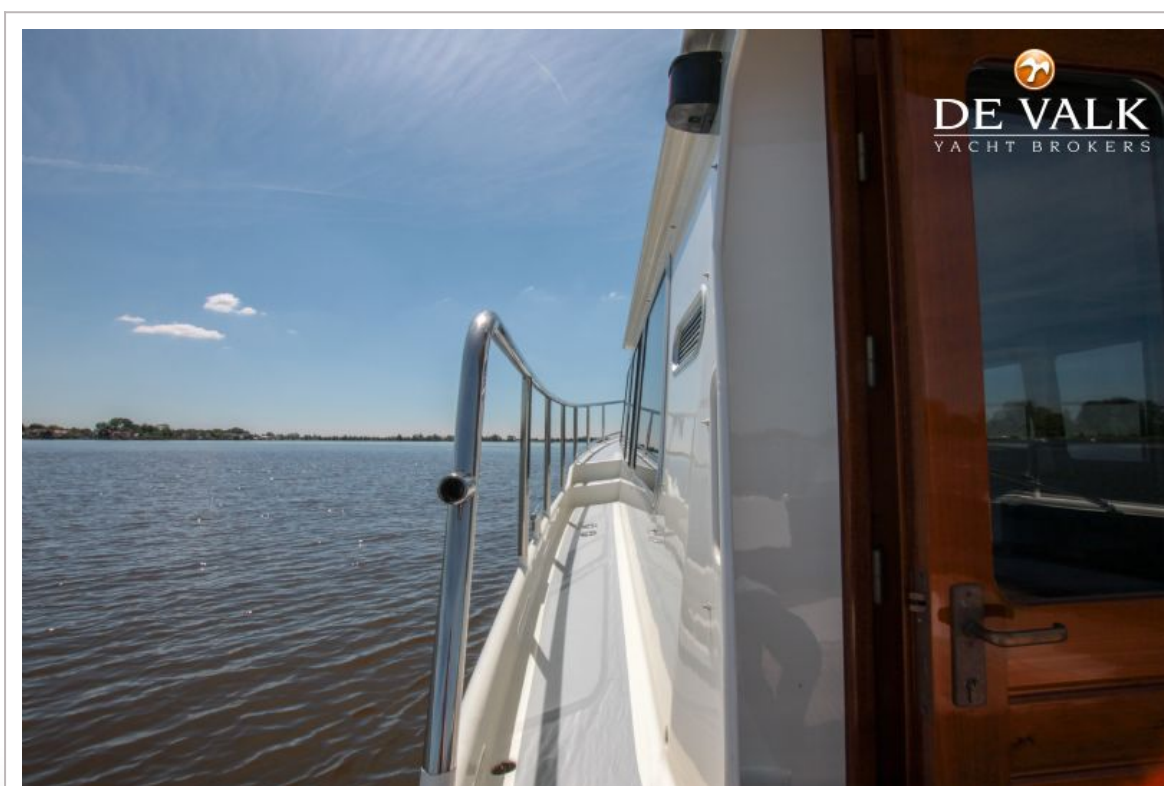
BARKAS 1150 OK



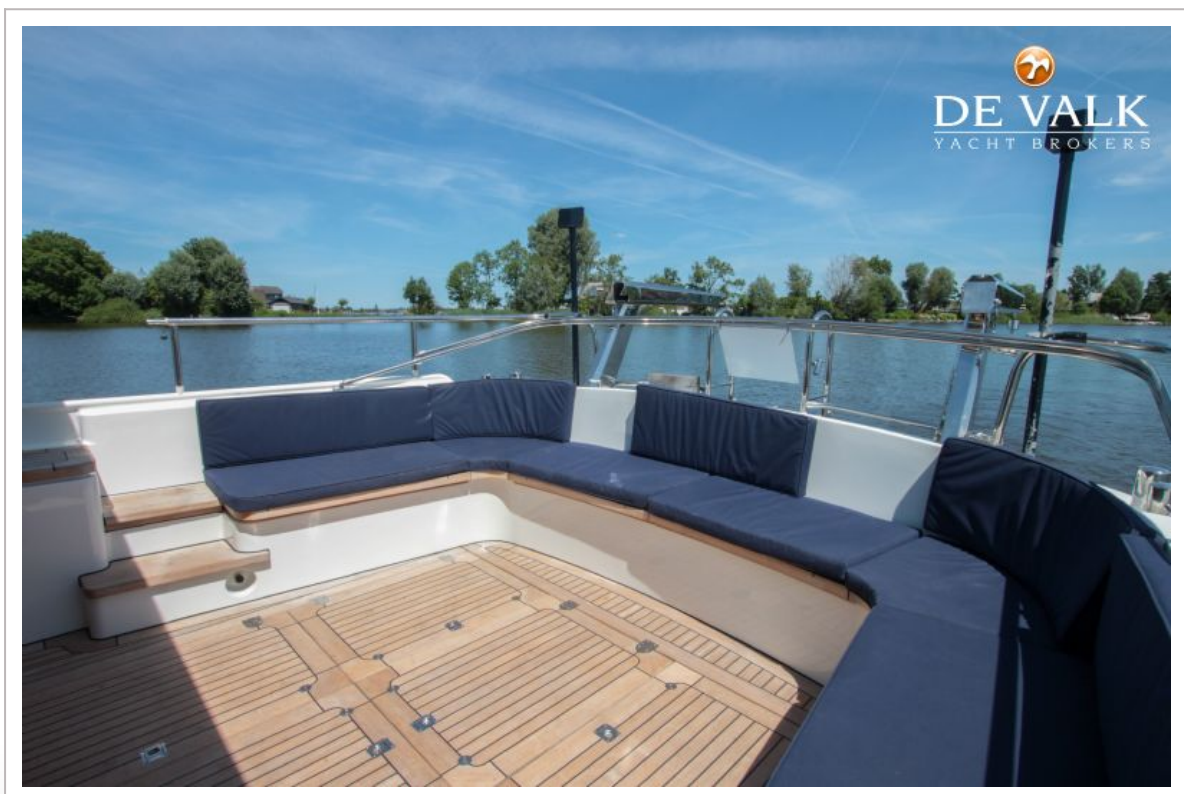
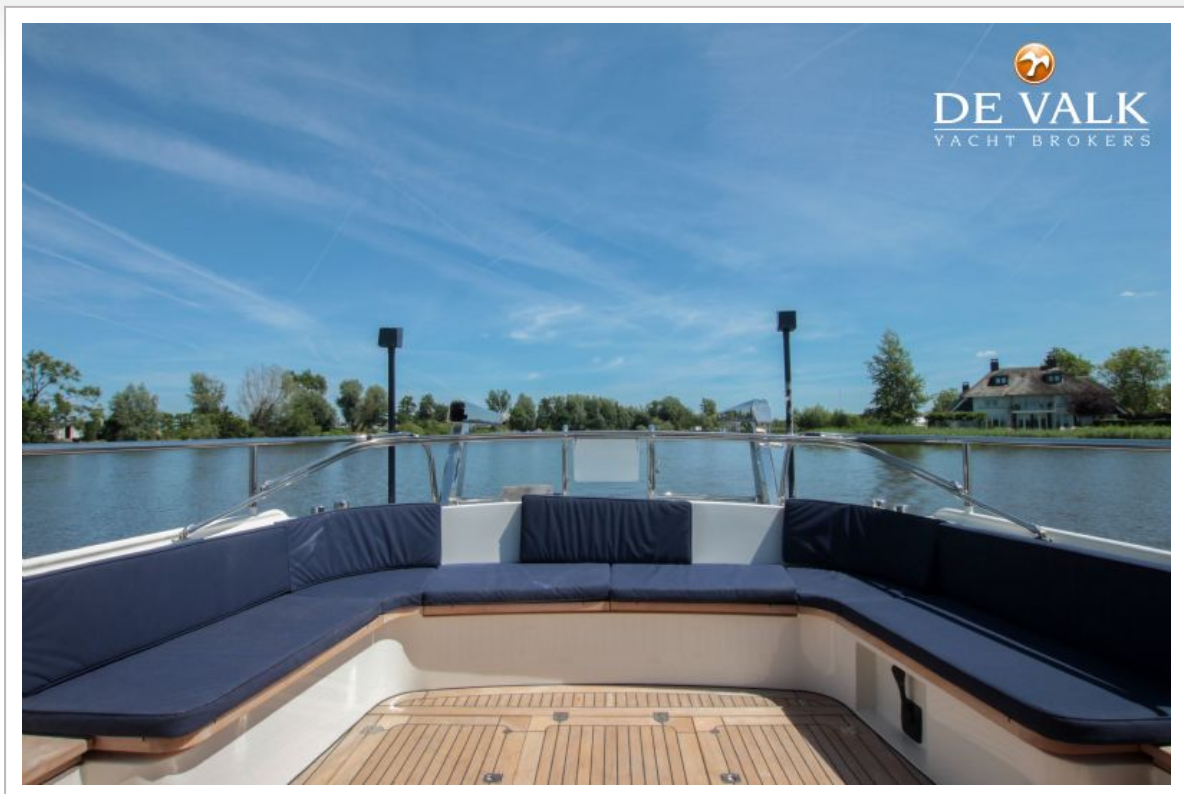
BARKAS 1150 OK



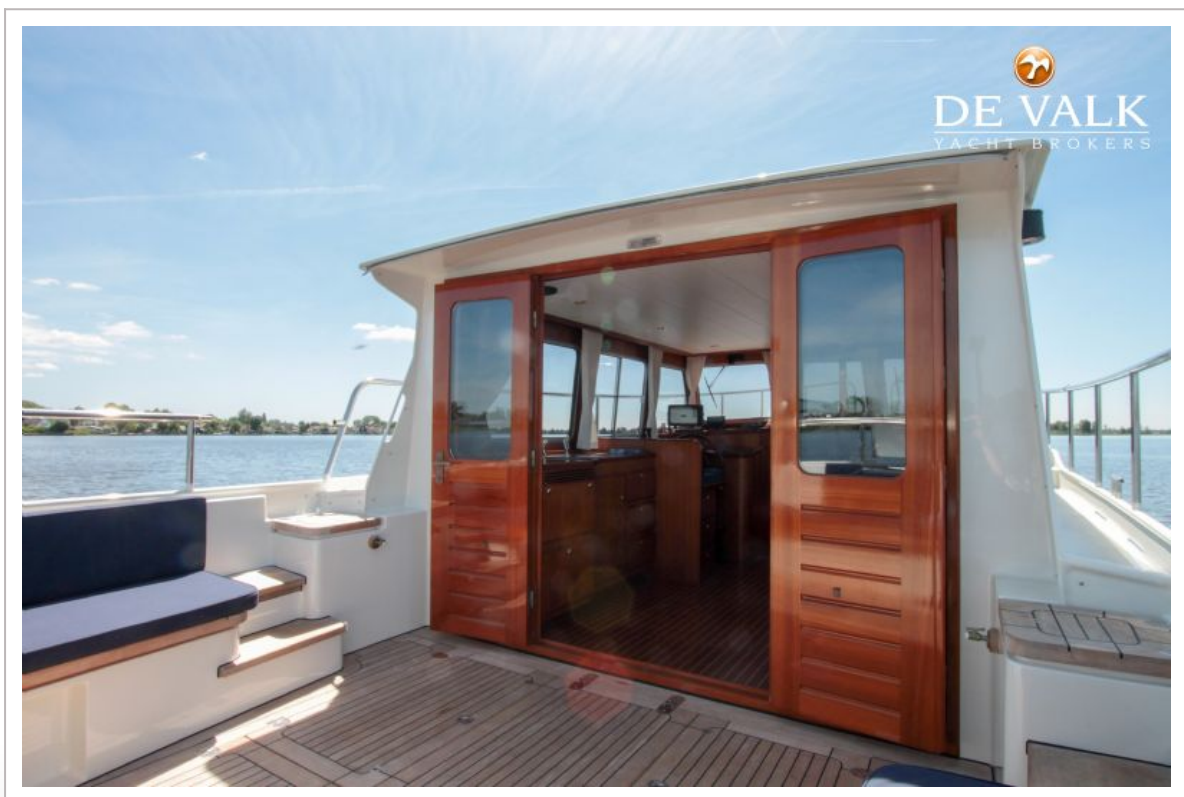
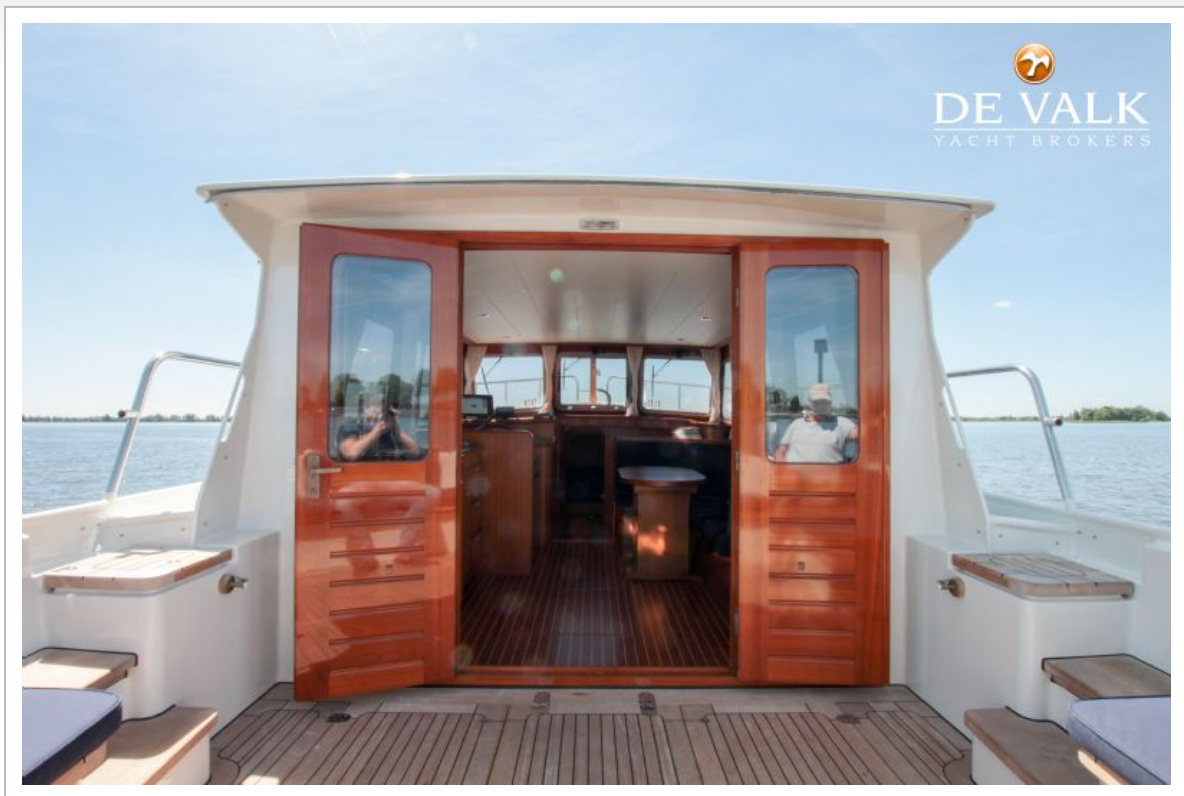
BARKAS 1150 OK



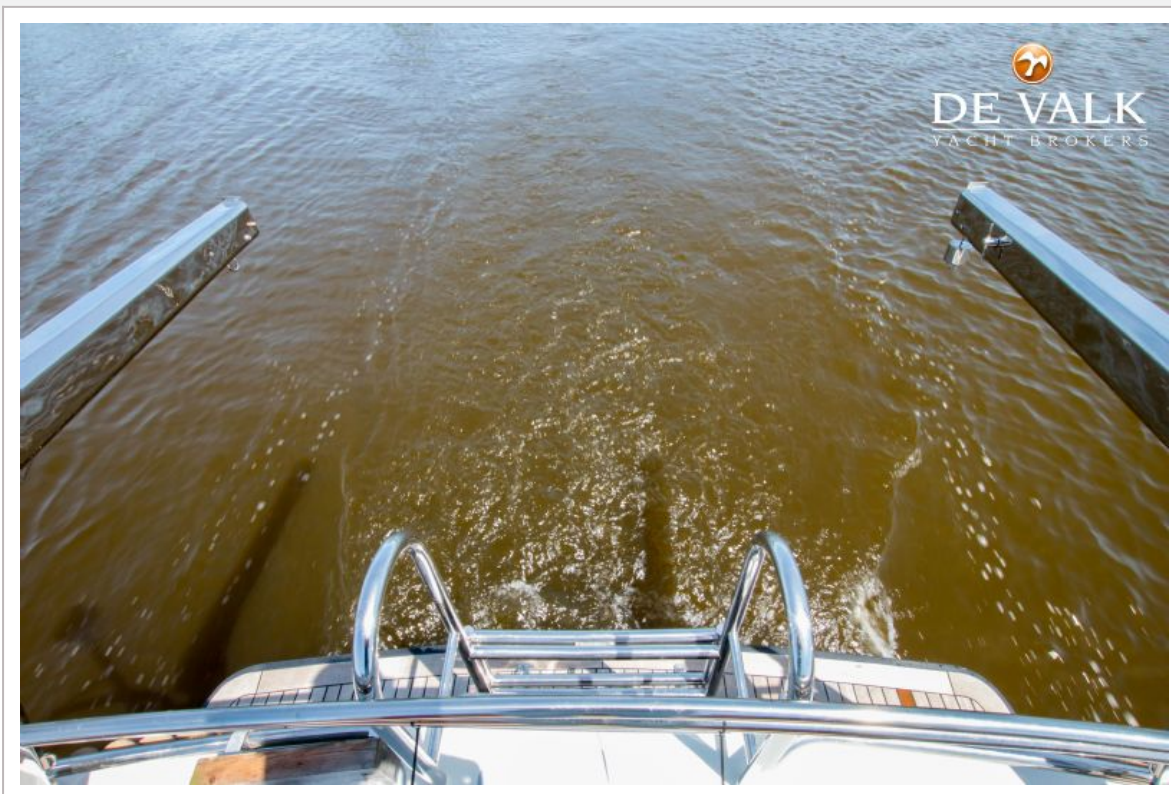
BARKAS 1150 OK



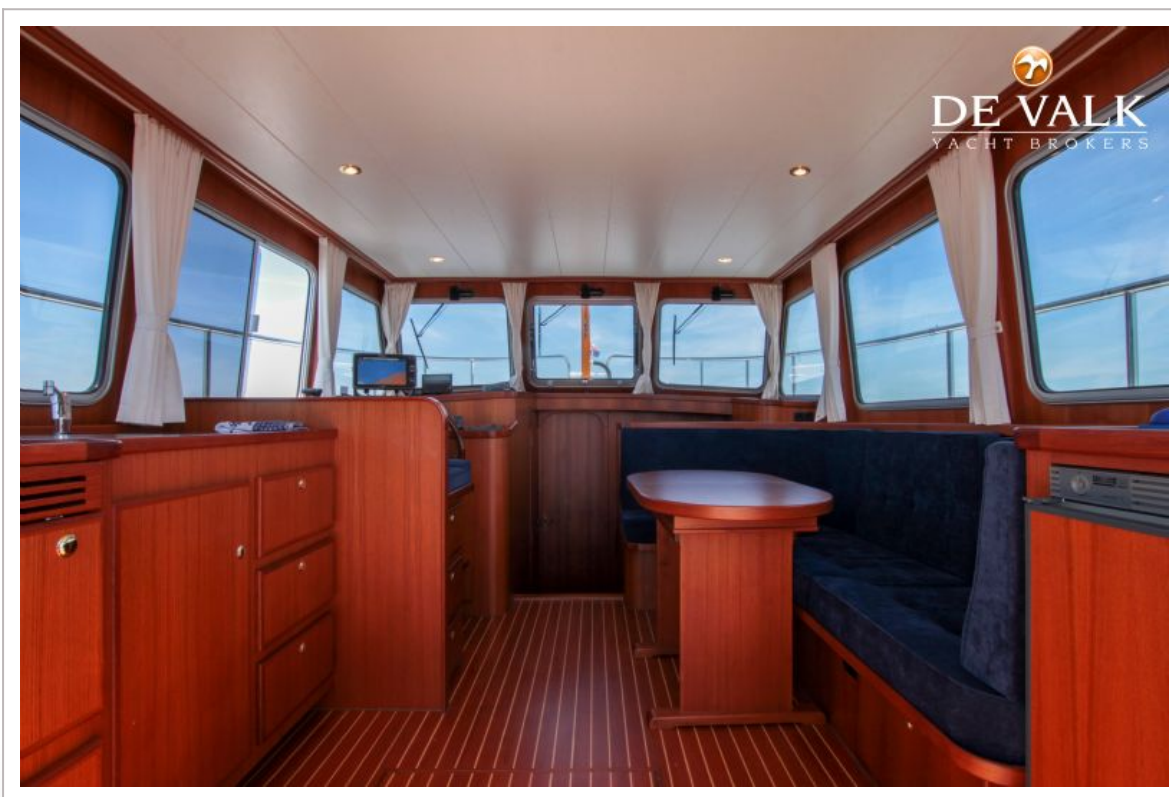
BARKAS 1150 OK



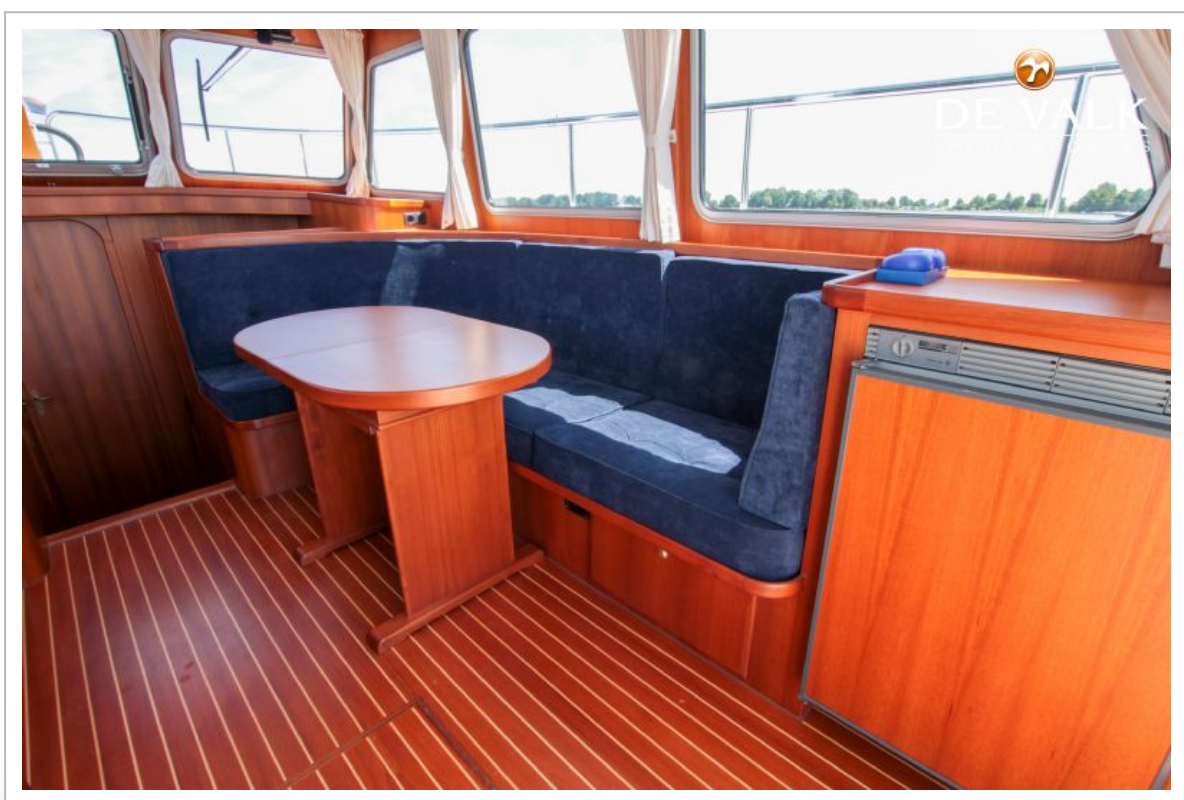
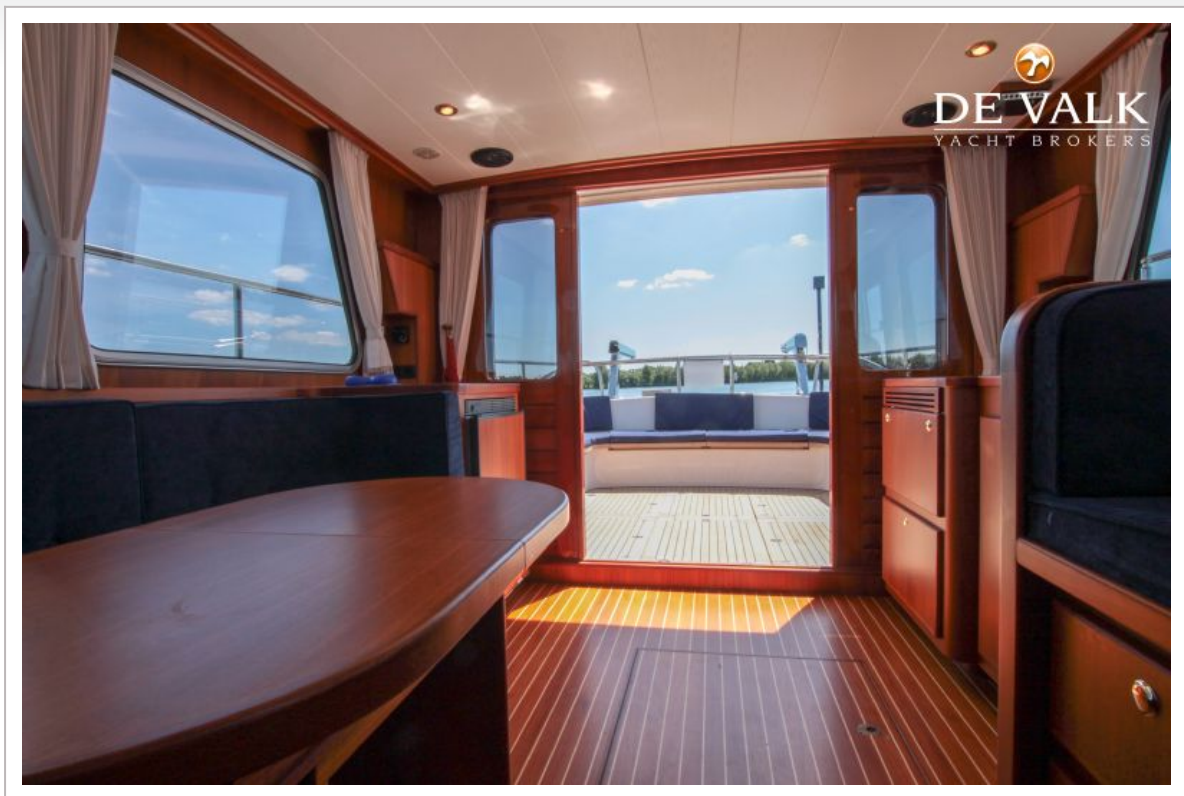
BARKAS 1150 OK



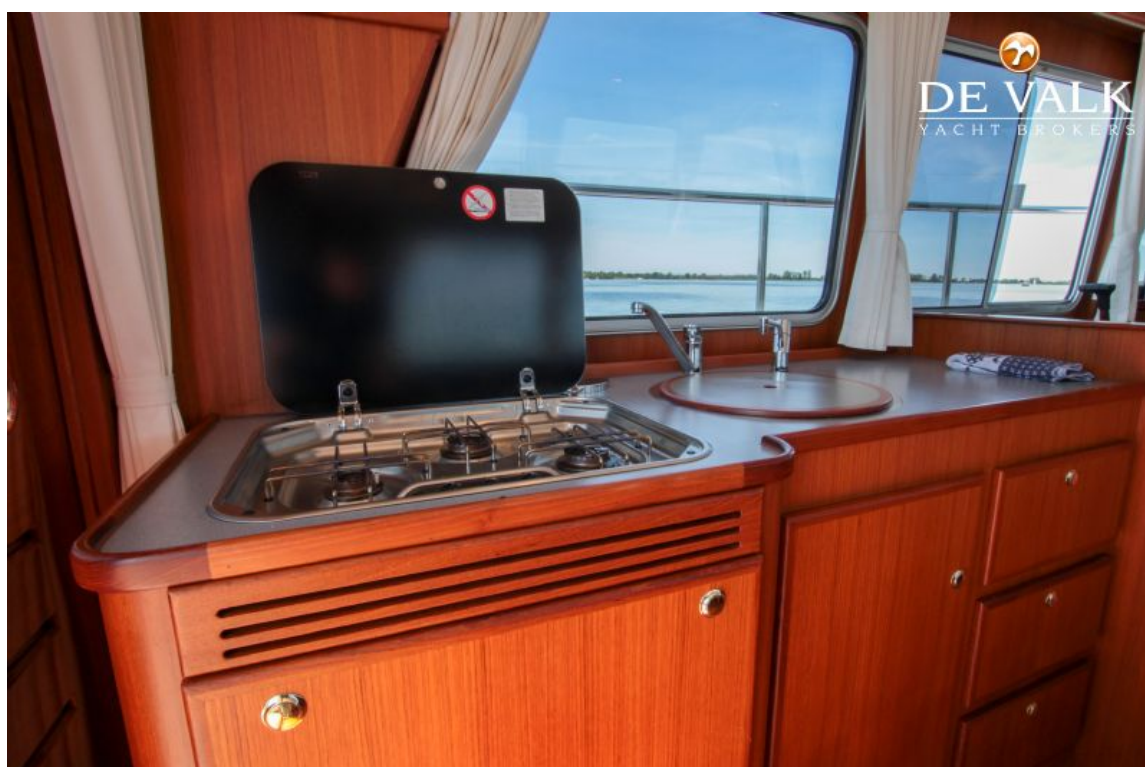
BARKAS 1150 OK



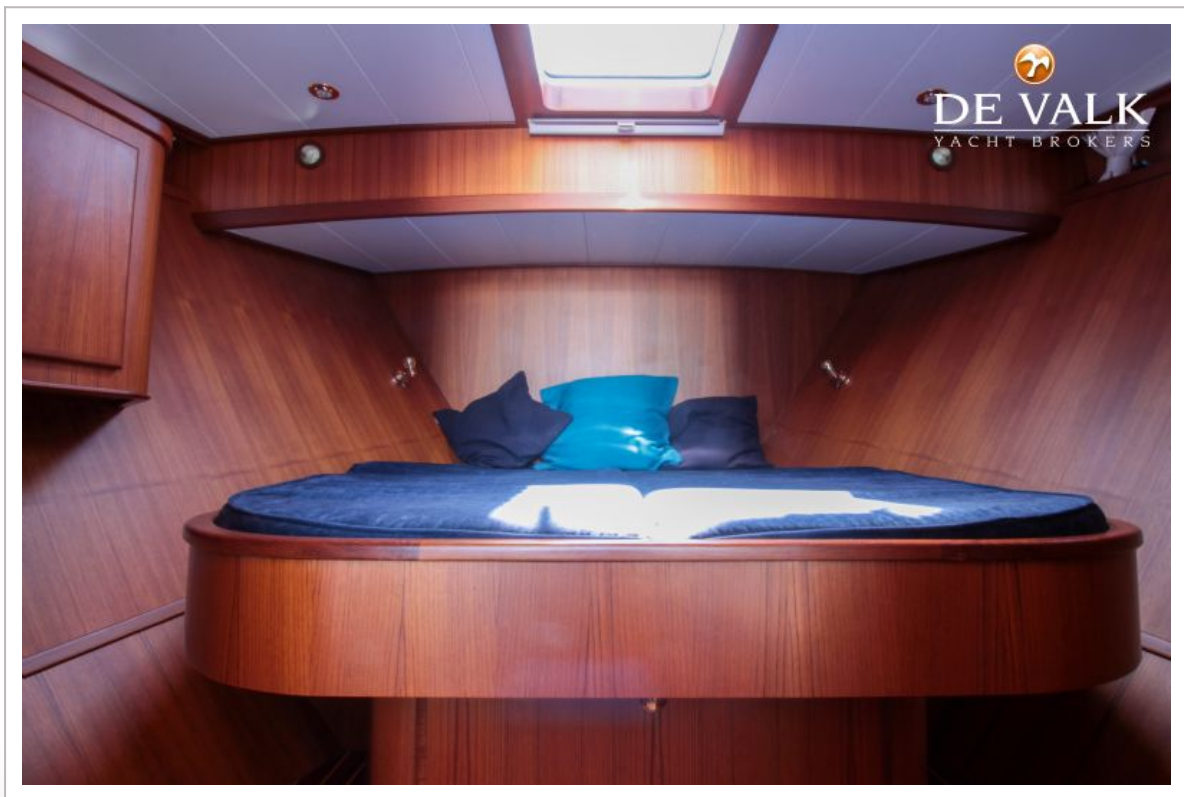
BARKAS 1150 OK



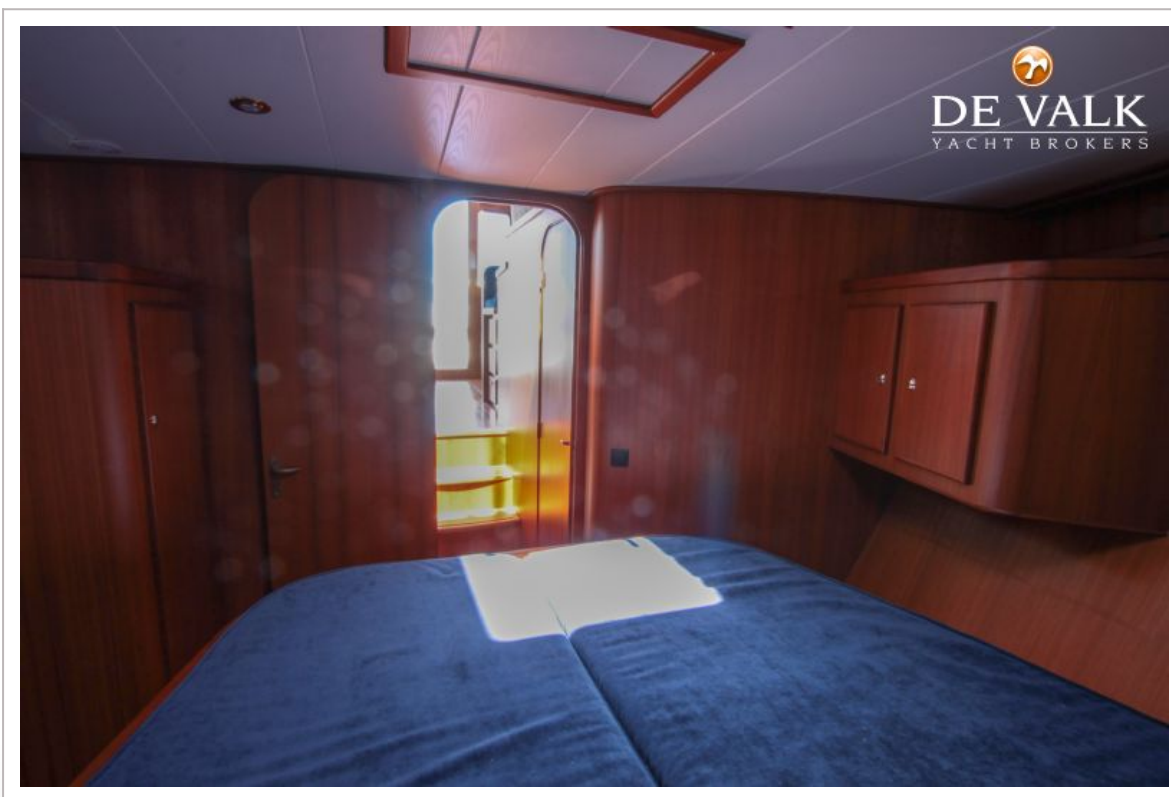
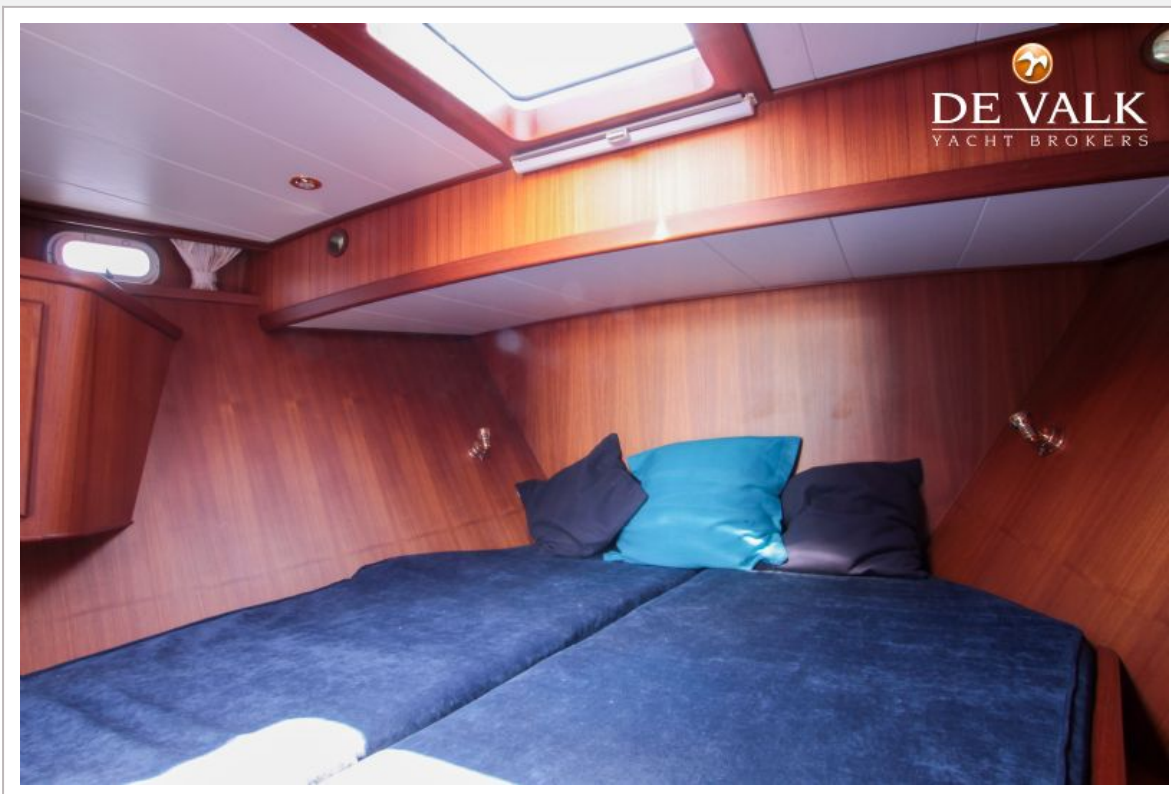
BARKAS 1150 OK



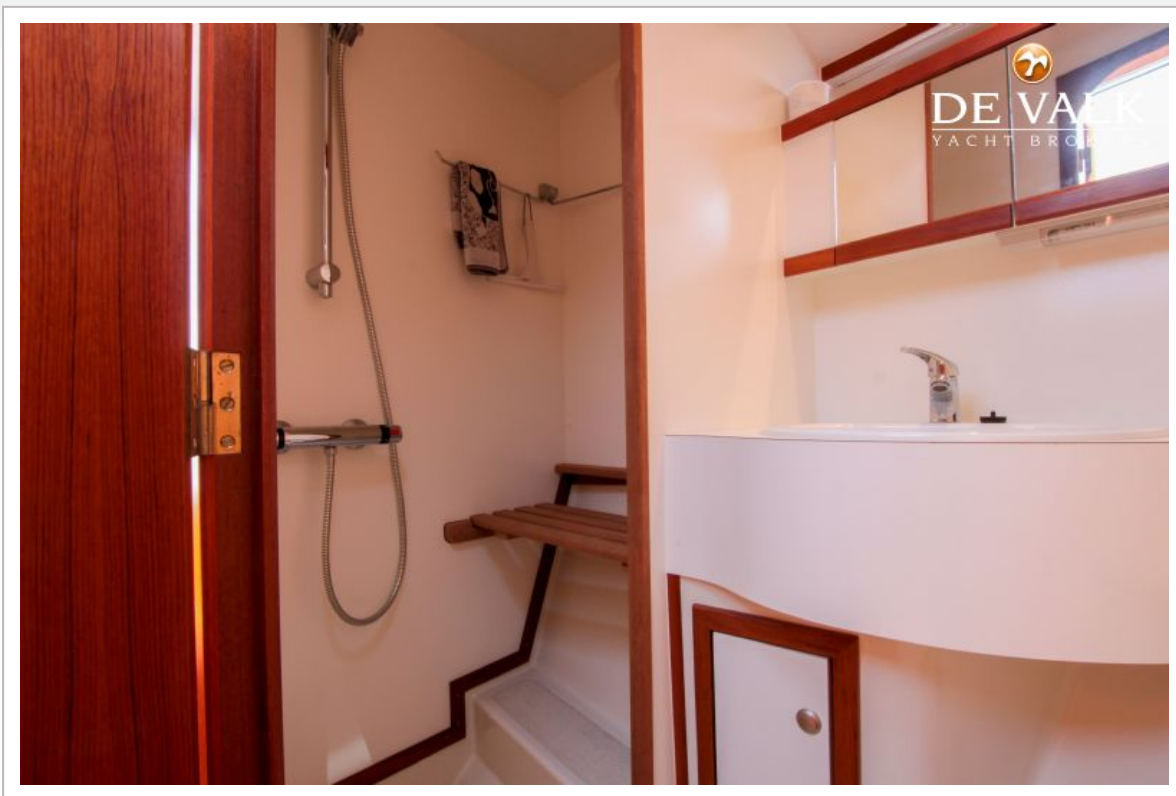
BARKAS 1150 OK



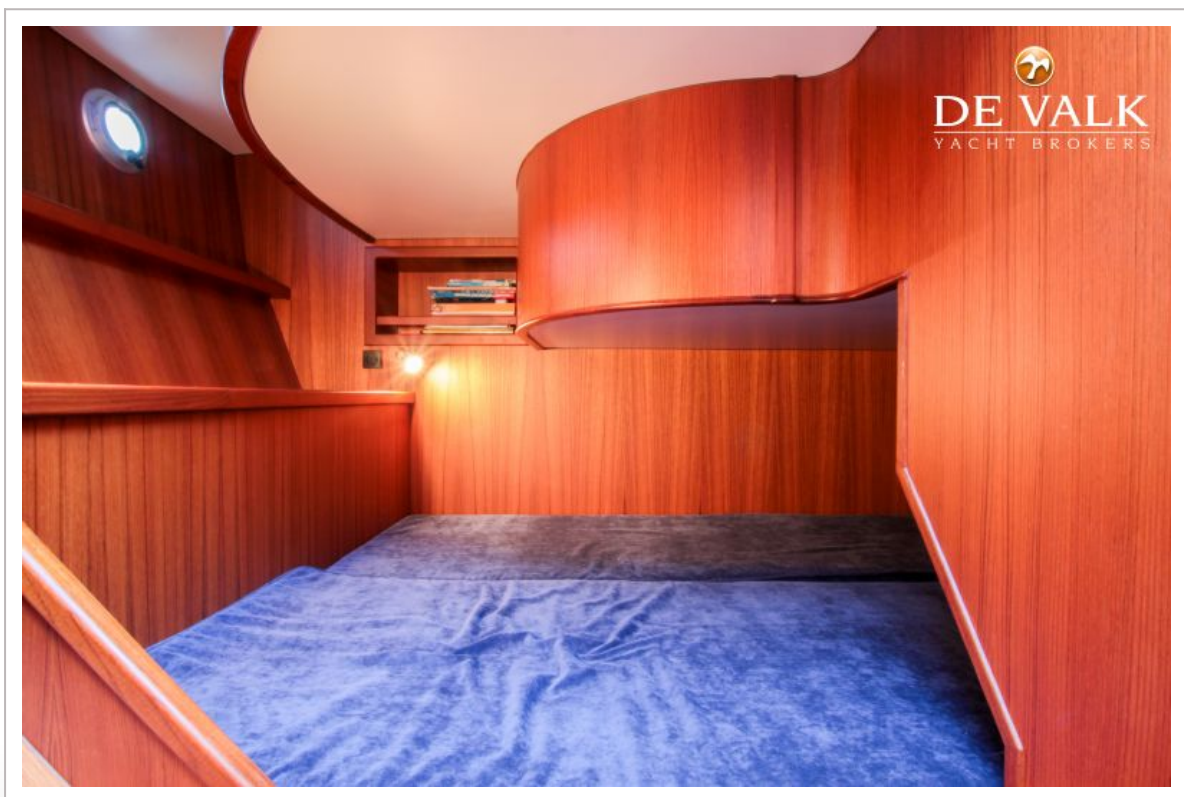
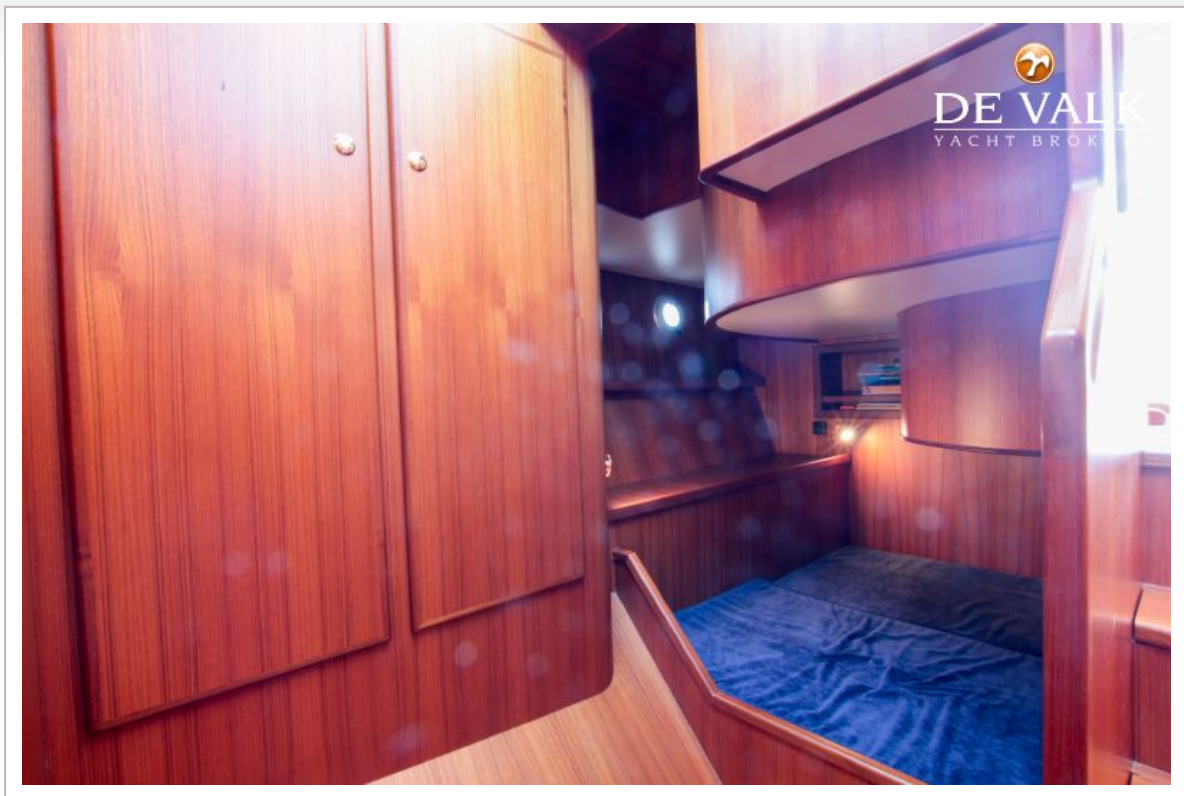
BARKAS 1150 OK



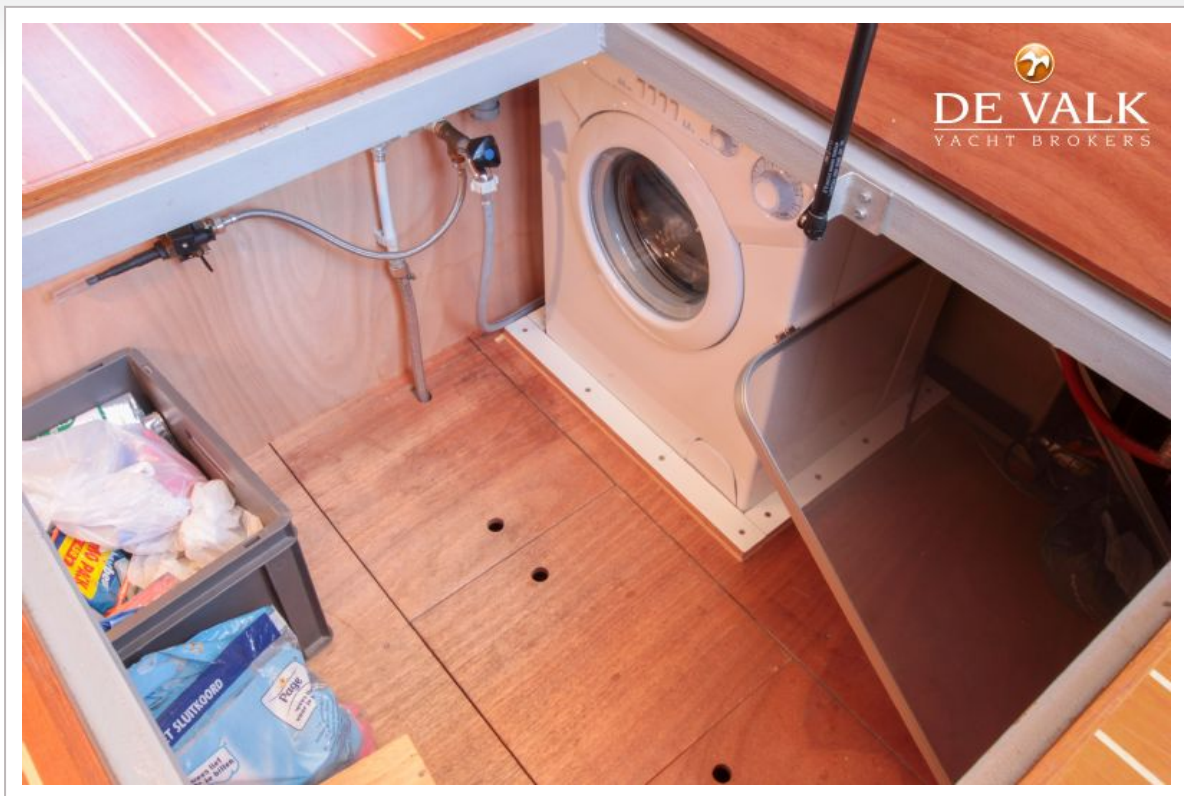
BARKAS 1150 OK



BARKAS 1150 OK



BARKAS 1150 OK



BARKAS 1150 OK

