



DE VALK
YACHT BROKERS



CCYD 75



DE VALK
YACHT BROKERS

BROKER'S COMMENTS

The CCYD 75 Santana is the ideal blue water cruiser for a world cruise. Her four cabin layout with en suite ensures private for all on board. The CCYD 75 Santana has a huge social cockpit ideal for entertaining guests. Her fully powered sails controls ensure ease of use and comfort. The CCYD was fully rebuilt and all systems are state of the art incorporating the latest technology. The CCYD is a safe and sturdy sailing yacht ideal for polar expeditions or cruising remote paradise islands. Her twin engine and bowthruster make maneuvering very easy.

Reinier van der Wolf

SPECIFICATIONS

Dimensions	23.50 x 5.90 x 3,50 / 2.00 (m)	Builder	CCYD
Built	1988	Cabins	3
Material	Steel	Berths	7
Engine(s)	2 x Perkins range 4 diesel	Hp/Kw	2 x 135.00 (hp), 99.22 (kw)
Asking price	€ 1.650.000 (VAT Paid)	Lying	at sales office

CONTACT

Sales office	De Valk Monnickendam	Telephone	+31 299 65 63 50
Address	Hoogedijk 6 1145 PM Katwoude The Netherlands	E-mail	monnickendam@devalk.nl

DISCLAIMER

These particulars are given in good faith as supplied but cannot be guaranteed.



GENERAL

Model	CCYD 75
Type	sailing yacht
LOA (m)	23,50
Beam (m)	5,90
Draft (m)	2,00
Draft min (m)	3,50
Year built	1988
Launched	2019 after rebuilt
Builder	CCYD
Country	Italy
Designer	Dei Rossi, Werner yacht design rebuilt
Displacement (t)	70
Ballast (tonnes)	15 ton in centreboard
Hull material	steel
Hull colour	blue Gold striping all Awlgrip by Klaver Holland
Hull thickness (mm)	6
Hull shape	round-bilged
Keel type	centreboard Keel with weighted
Deck plate thickness (mm)	4 mm
Deck material	steel
Deck finish	non-skid paint Grey
Superstructure deck finish	paint
Cockpit deck finish	paint
Dorades	2
Window material	glass ISO 614:2012 Toughened safety glass 2019
Deckhatch	yes
Portholes	stainless steel 16
Insulation	foam plates
Fuel tank (litre)	steel 3200 L.
Level indicator (fuel tank)	yes



Freshwater tank (litre)	3800 L.
Level indicator (freshwater)	yes
Blackwater tank (litre)	
Level indicator (blackwater)	yes
Blackwater tank extraction	deck extraction + pump
Greywater tank (litre)	
Level indicator (greywater)	yes
Wheel steering	hydraulic
Outside helm position	
More info on hull	Fully sandblasted
More info on paintwork	Fully repainted
Extra info	Built under Lloyds +100A1.

ACCOMMODATION

Cabins	3
Berths	7
Crew cabin	1
Crew berths	2
Interior	New 2019
Layout	Crewed
Floor	parquet
Aft deck	yes
Deck saloon	yes
Saloon	yes
Headroom saloon (m)	2,20 m.
Heating	central heating WEBASTO 16 kW
Heating 2	central heating Boiler 6 kW
Air-conditioning	reverse cycle airco WEBASTO 72000 BTU
Navigation center	yes
Chart table	yes
Aft Cabin	yes



Dining room	yes
Sliding door to aft deck	yes
Galley	U-shaped
Countertop	wood
Sink	stainless steel Double
Cooker	electric 4 burner
Oven	yes
Extractor	yes
Microwave/oven combi	yes
Fridge	yes
Freezer	yes
Hot water system	220V + engine Plus heating 60 liter
Water pressure system	
Crockery	yes
Owners cabin	French bed
Bed length (m)	2,10 m.
Wardrobe	hanging/drawers/shelves
Bathroom	en suite
Toilet	en suite
Toilet system	electric
Wash basin	in the bathroom
Shower	en suite
Guest cabin 1	double bed
Bed length (m)	2 m.
Wardrobe	hanging/drawers/shelves
Bathroom	en suite
Toilet	en suite
Toilet system	electric
Wash basin	in the bathroom
Shower	en suite
Guest cabin 2	double bed
Bed length (m)	2 m.



Wardrobe	hanging/drawers/shelves
Bathroom	en suite
Toilet	en suite
Toilet system	electric
Wash basin	in the bathroom
Shower	en suite
Guest cabin 3	bunk bed
Bed length (m)	2 m.
Wardrobe	hanging/drawers/shelves
Bathroom	en suite
Toilet	en suite
Toilet system	electric
Wash basin	in the bathroom
Shower	en suite
Crew cabin(s)	1
Bathroom (crew)	yes
Toilet (crew)	yes
Toilet system	manual
Wash basin	in the bathroom
Shower (crew)	yes

MACHINERY

No of engines	2
Make	Perkins
Type	Range 4
HP	135
kW	99.22
Fuel	diesel
Year installed	2005
Year of overhaul	2017
Maximum speed (kn)	11



Cruising speed (kn)	8
Engine cooling system	freshwater heat exchanger
Drive	shaft
Shaft seal	yes
Engine controls	electrical
Gearbox	hydraulic ZF
Engine controls	electrical
Bowthruster	electric Asynchronous 15 Kw
Thrust bearing	AQUA DRIVE
Propeller type	reversible VARIPROP DF128 from SPV Gmbh
Propeller blades	4
Propeller shaft material	stainless steel
Shaft lubrication	grease
Manual bilge pump	yes
Electric bilge pump	yes
Bilge alarm	yes
Electrical installation	12 & 24 V DC and 230 V 50 Hz
Generator	silent separator MASTERVOLT WHISPER 25kw Ultra 380 V with KOHLER exhaust
Running hours generator	yes
Generator 2	silent separator Kohler 9 Kw
Batteries	yes
Start battery	440 Amp 24 Volt for hydraulics
Service battery	MVSV 2V-1000Ah Traction 24V
Electric engine battery	yes
Generator battery	yes
Battery monitor	yes
Battery charger	3 x MASTERVOLT 24v /100A + 12/10 230V/50-60Hz IP65 start battery
Inverter	MASTERVOLT Sine 24/5000 230V/50Hz
Diode battery combiners	yes
Shorepower	with cable



Insulation transformer	2 x MASTERVOLT GI 7.0 kW MasterBus
Watermaker	yes
Extra info	Electronic monitoring system HattelandSer-x STD (MD) Touch
Extra info	MASTERVOLT ALFA add. alternators (110A, 24V)

NAVIGATION

Compass	Ritchie new
Electric compass	Simrad IS20 new
Multi control display	Simrad
Depth sounder	Simrad IS20 new
Depth sounder/log	Simrad IS20 new
Log	Simrad IS20 new
Windset	Simrad IS20 TASK new
Repeater	Simrad IS20 new
VHF	yes
VHF handheld	yes
Autopilot	Simrad AP70 New
Rudder angle indicator	Simrad IS 20 New
Radar	Simrad 6KW New
GPS	Simrad
Plotter	Simrad
Radar/GPS/plotter	2 x Simrad NSE 12 New
Electronic chart(s)	yes
AIS transceiver	Simrad AIS 300L New
Navigation lights	yes

EQUIPMENT

Sprayhood	yes
Sprayhood with grab rail	yes
Bimini	yes
Winter cover	yes



Cockpit cushions	yes
Cockpit table	yes
Cockpit chairs	yes
Bathing platform	Transformer
Boarding ladder	stainless steel
Transom door	yes
Anchor	CQR Plough 75 kg
Anchor chain	Chain 110 m (stainless steel 14 mm)
Anchor 2	CQR Plough 45 kg
Anchor chain	New anchor cable 130 m.
Windlass	electrical Serviced 2019
Dinghy	rigid inflatable STORMLINE 360
Outboard	Yamaha 4 hp 4 stroke.
Outboard support	yes
Sea railing	stainless steel
Grab rail (superstructure)	stainless steel
Railing side opening gates	2 x
Pushpit	yes
Pulpit	yes
Life raft	container 2 x
Life raft (pers)	6
Last life raft survey	2021 with new hydrostats
Lifejackets	yes
Lifebuoy	yes
Danbuoy	yes
Fenders	yes
Mooring lines	yes
Spare parts	yes
Tools	yes
Alarm system	yes
Clock - barometer	yes
Fire extinguisher	yes



RIGGING

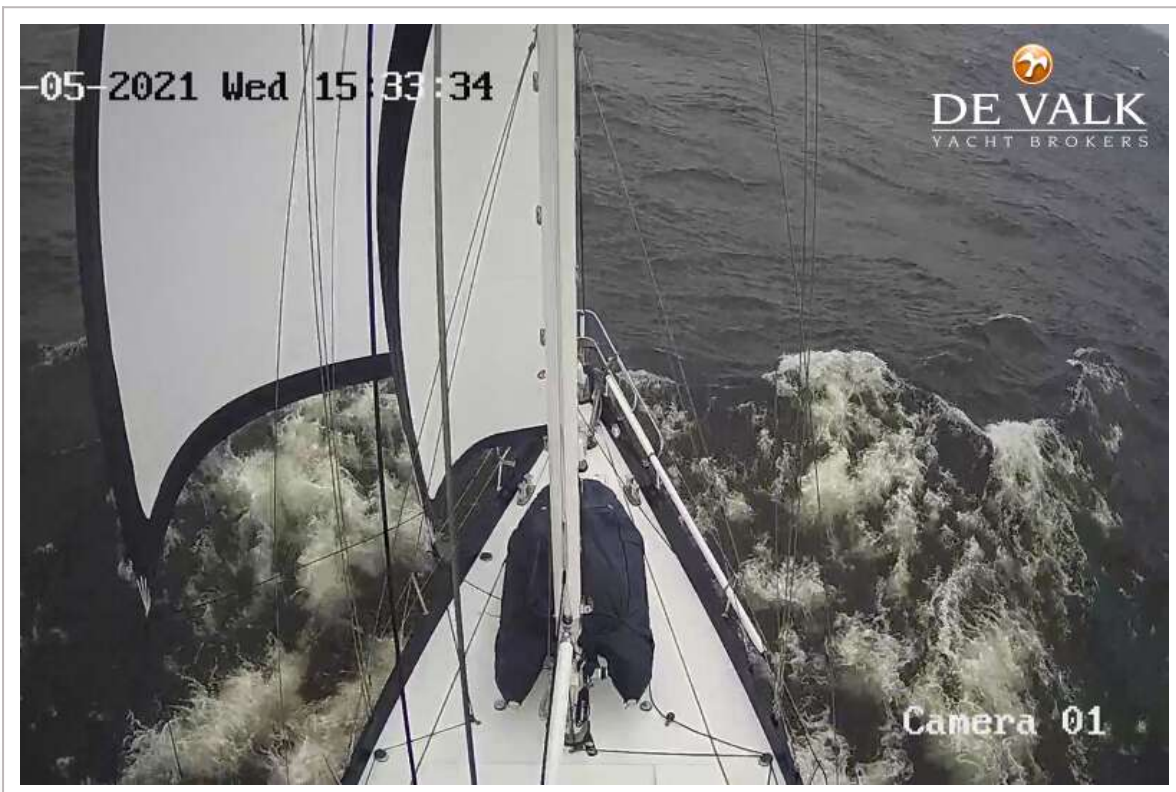
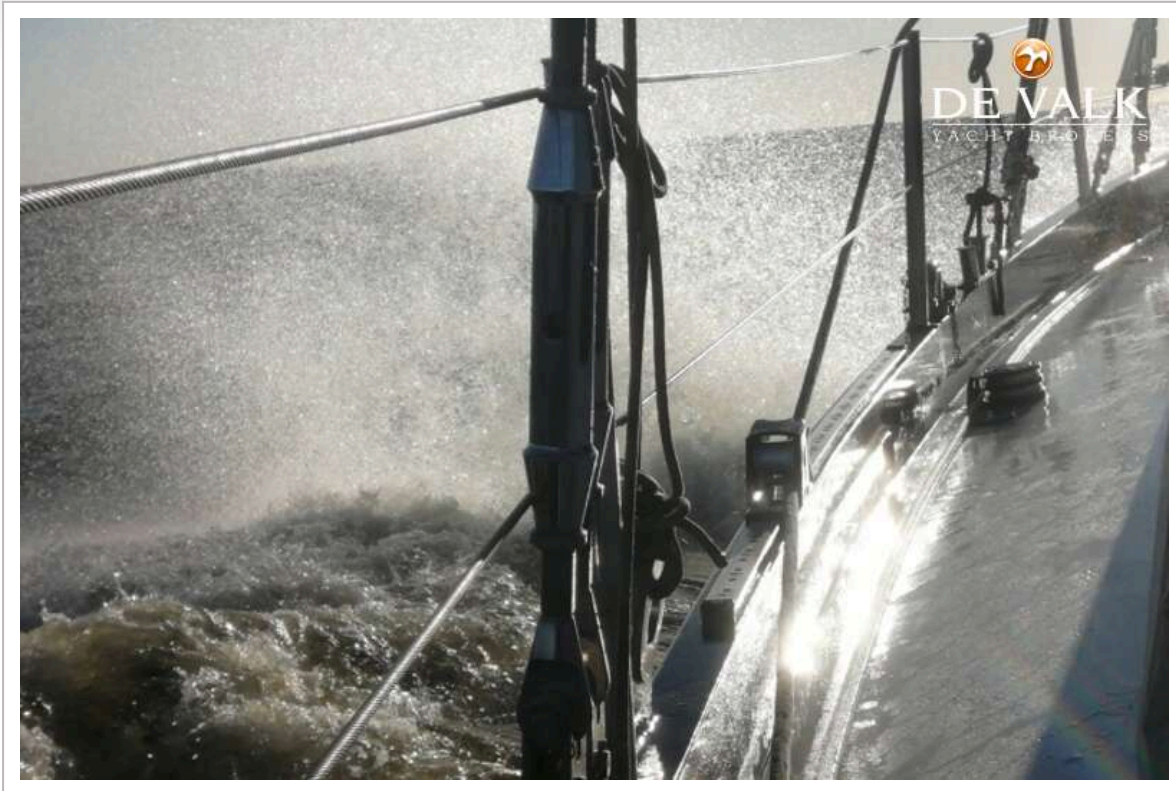
Rigging	schooner 2 mast
Standing rigging	wire
Material mast	aluminium
Spreaders	2 sets
Keel stepped mast	yes
Mainsail	yes
Stoway mast	Hydraulic
Cutterstay	yes
Main staysail	yes
Mizzen	yes
Genoa I	yes
Genoa furler	Hydraulic
Cutter furler	Hydraulic
Staysail furler	Hydraulic
Backstay adjuster	hydraulic
Primary sheet winch	yes
Secondary sheet winch	yes
Genoa sheetwinches	yes
Halyard winches	yes
Spinnaker winch	yes
Reefing winch	yes
Multifunctional winches	
Spi-pole	aluminium









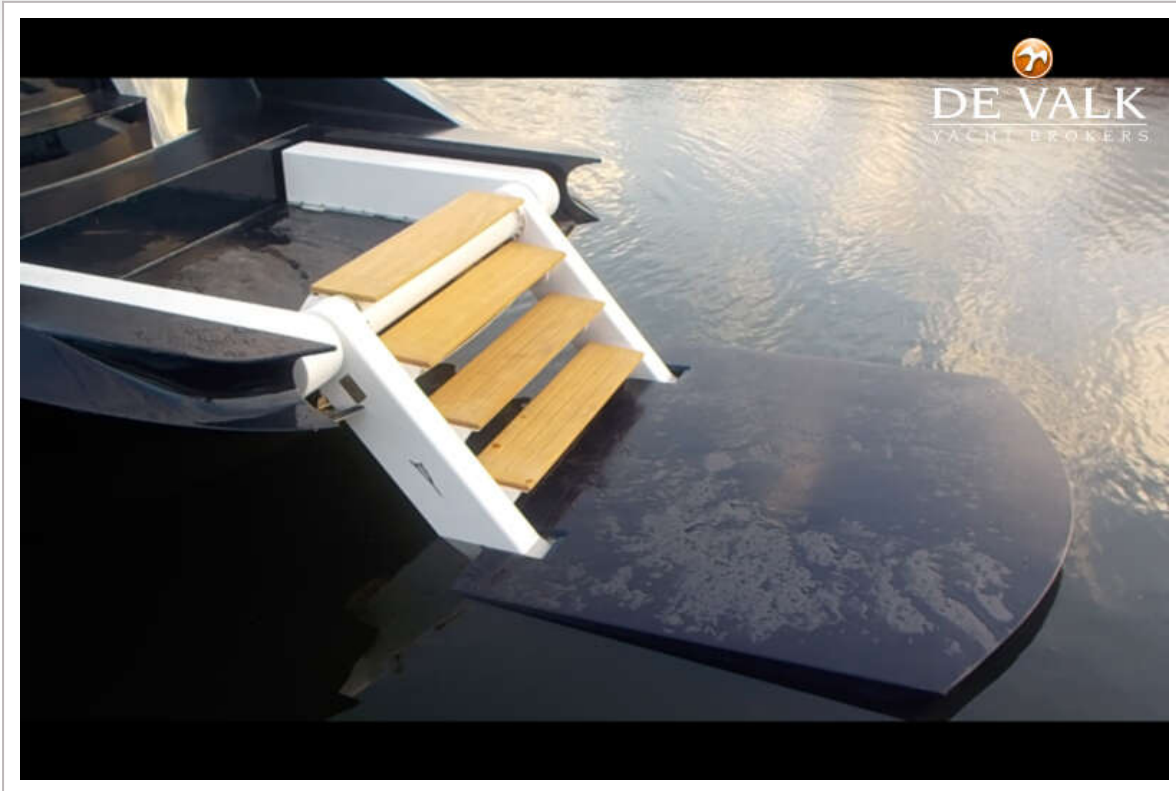




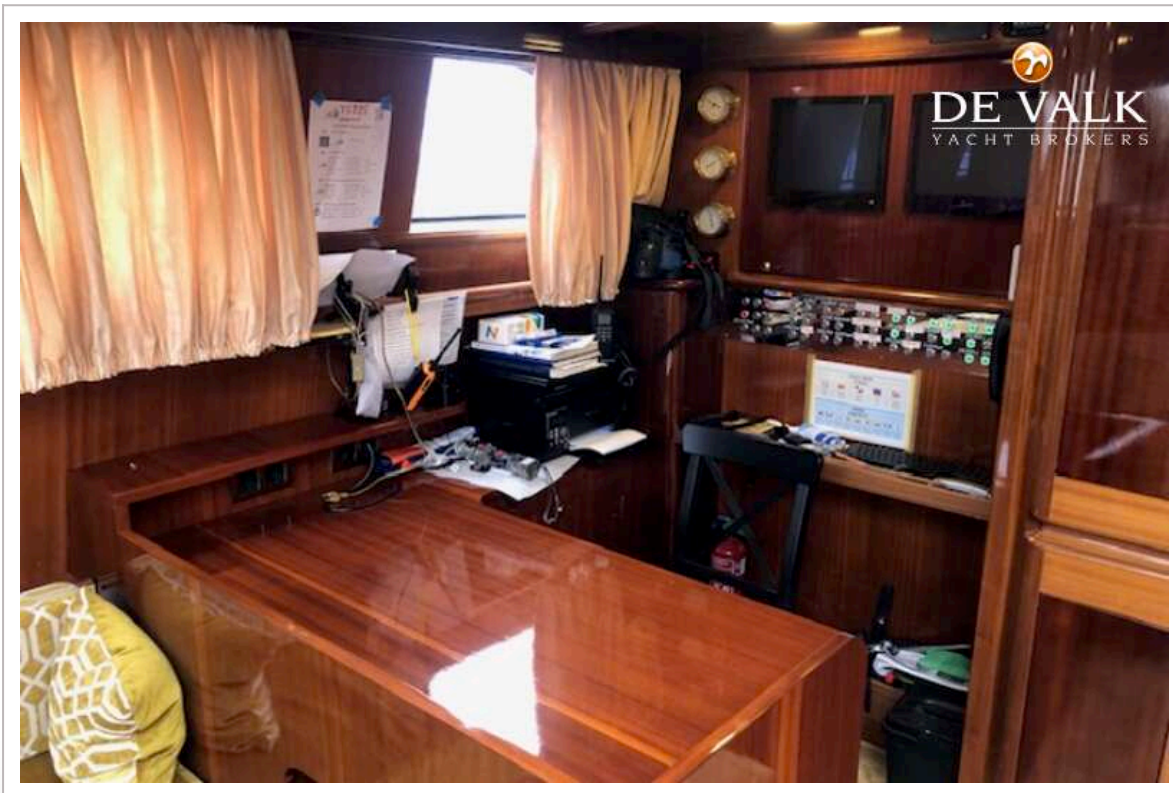


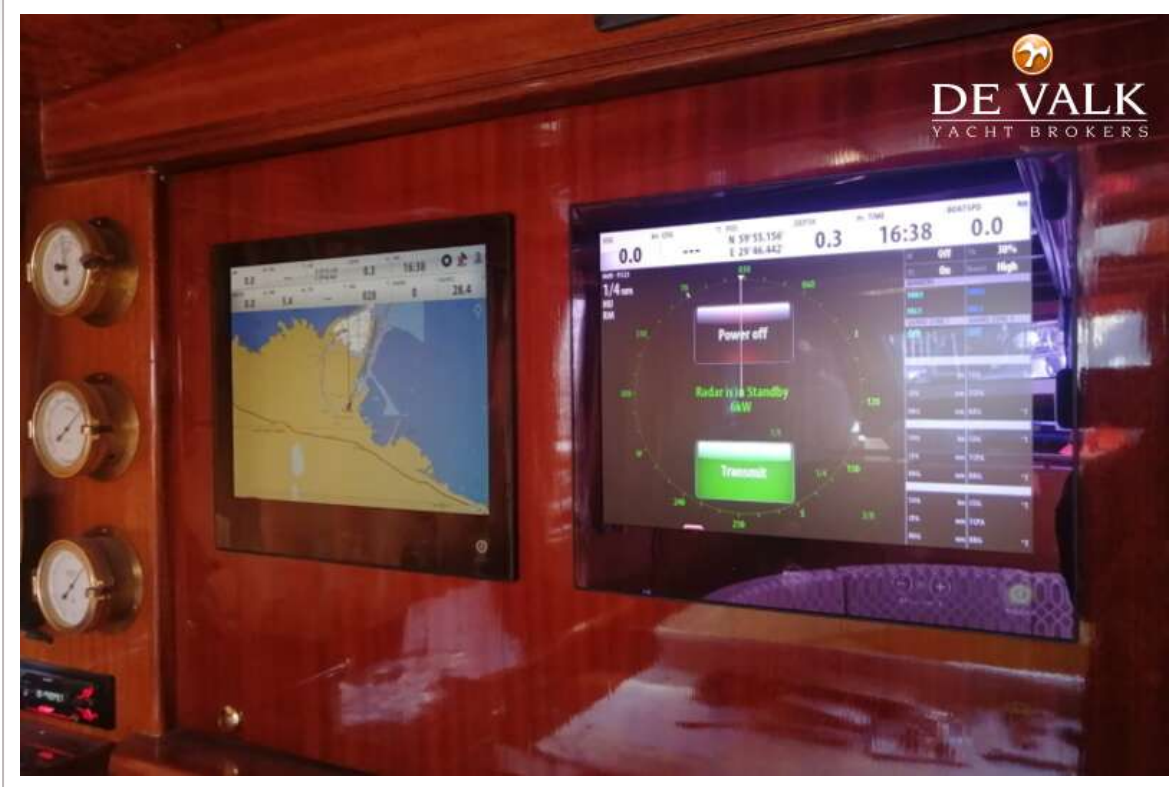


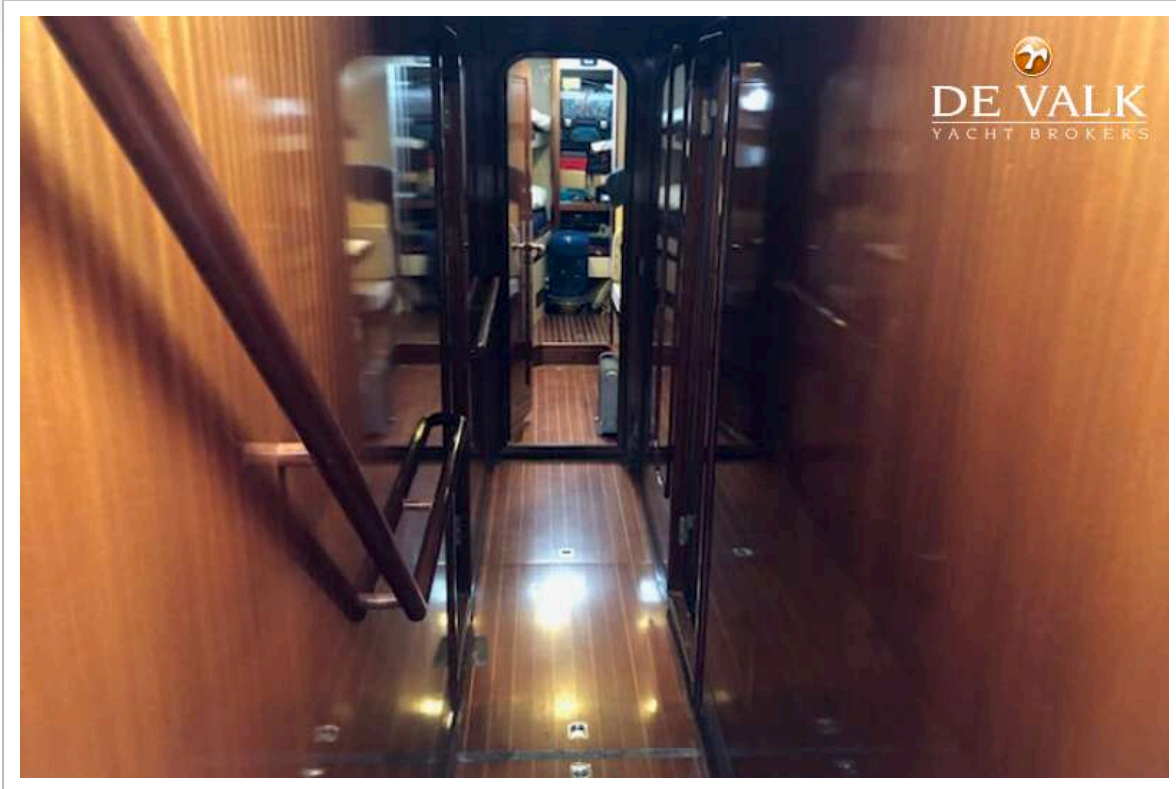


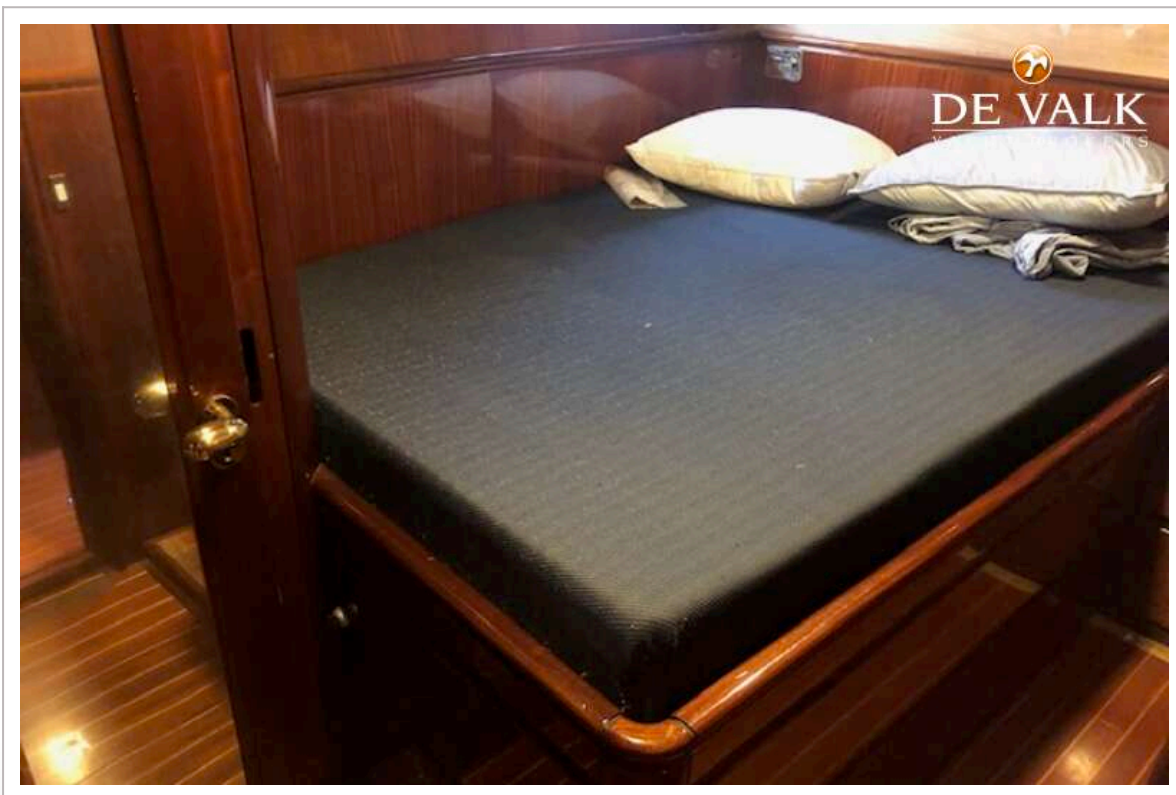
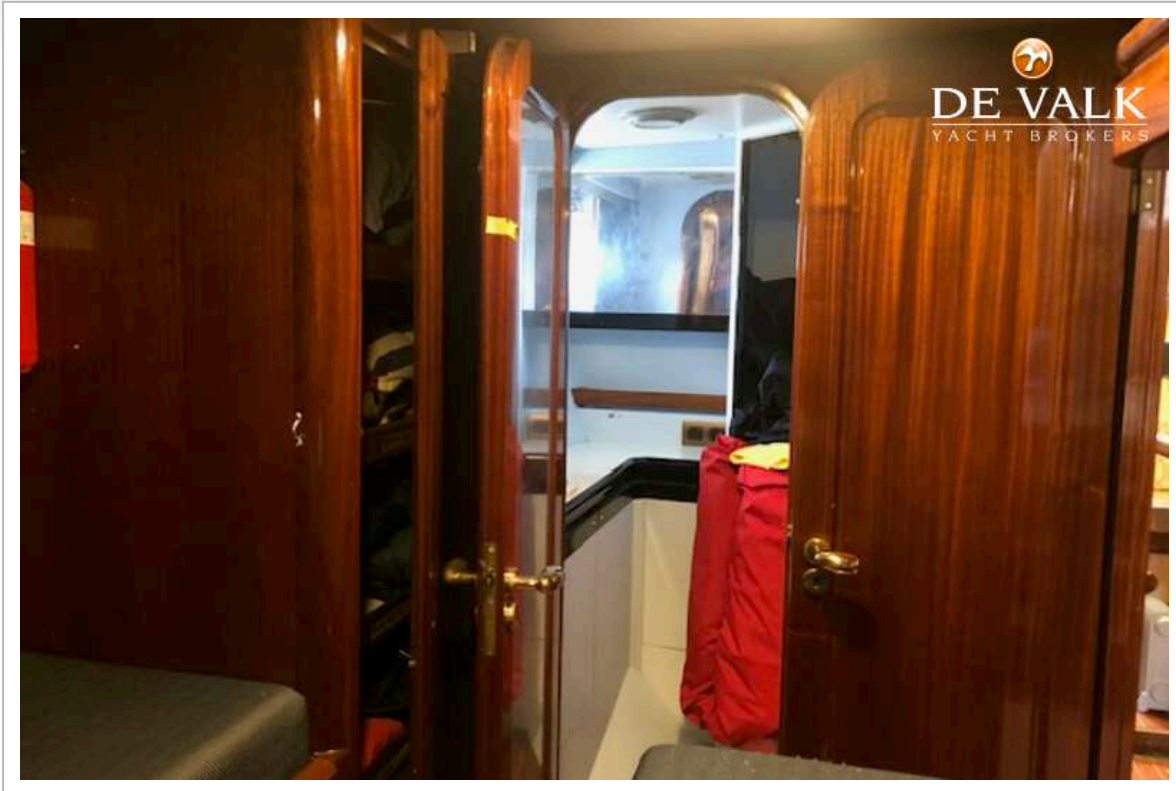


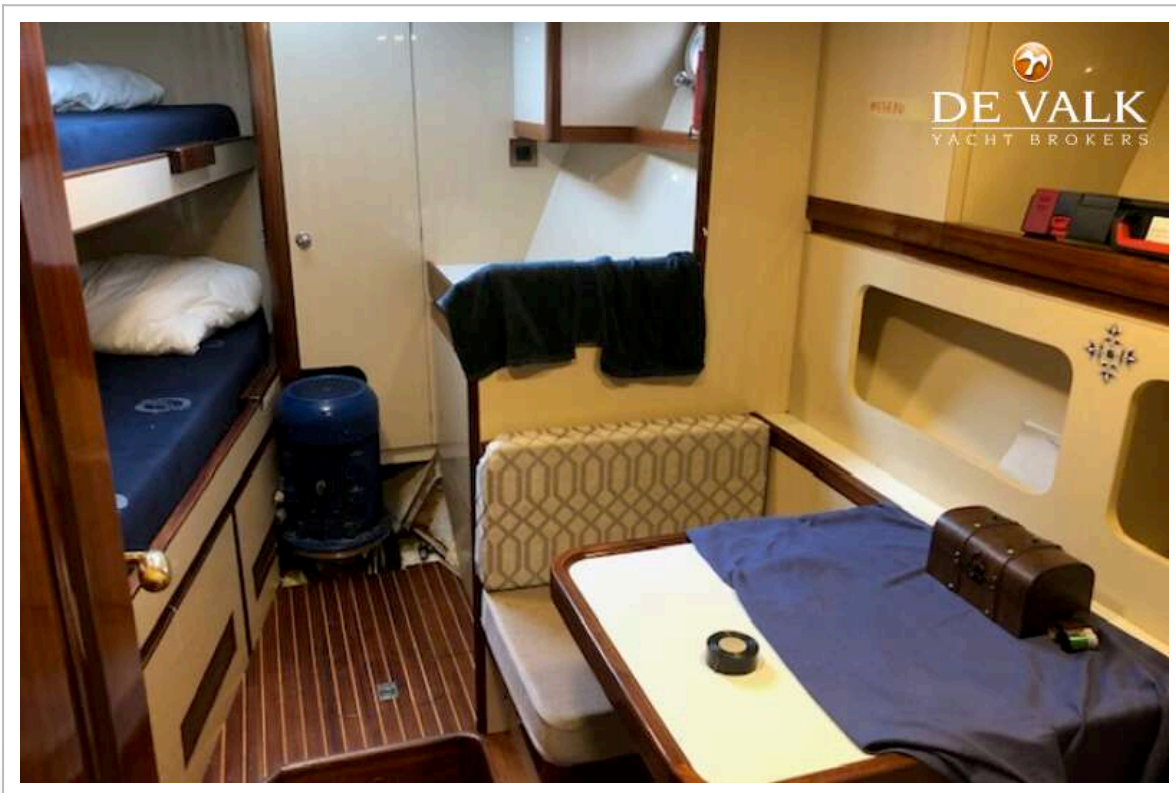
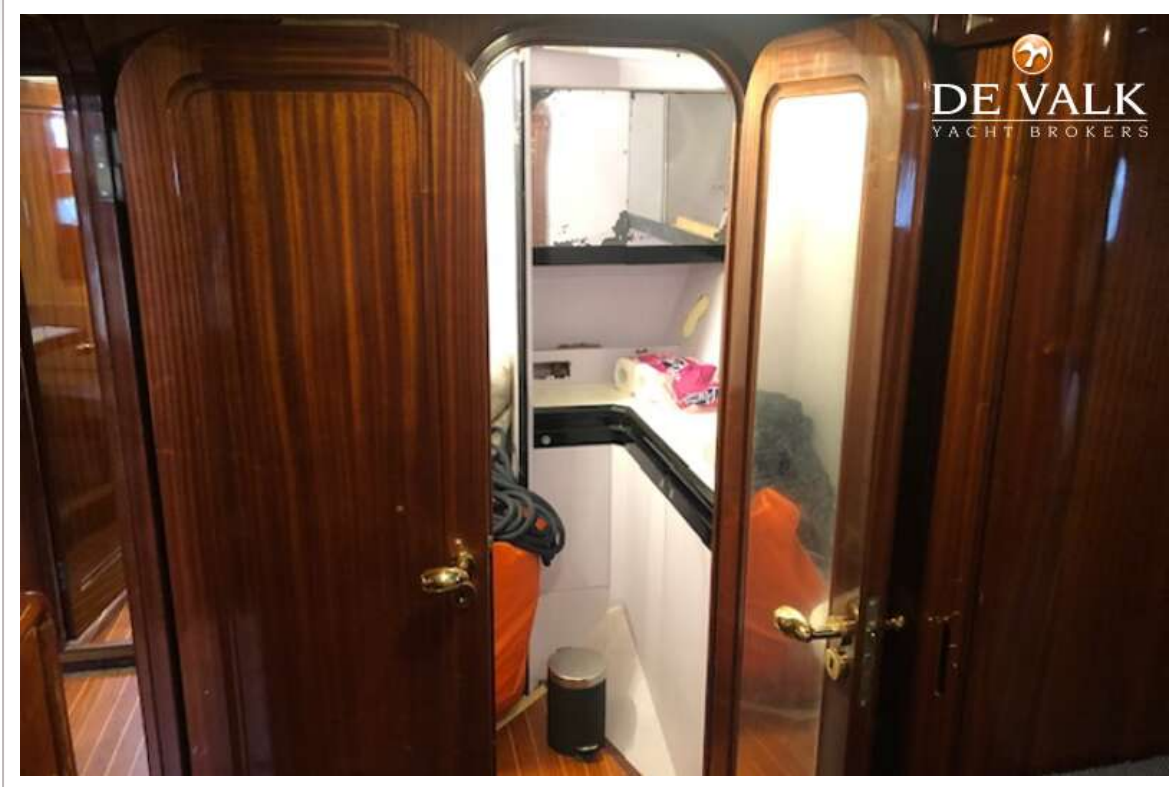


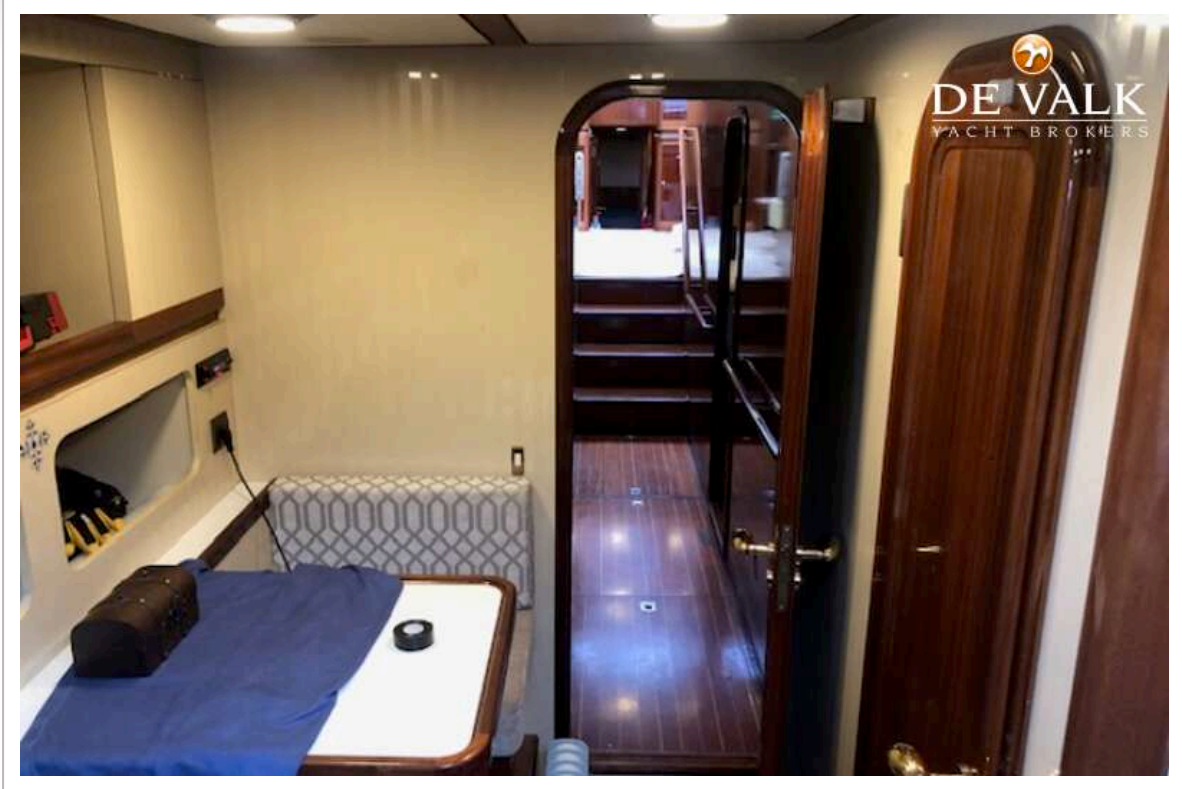


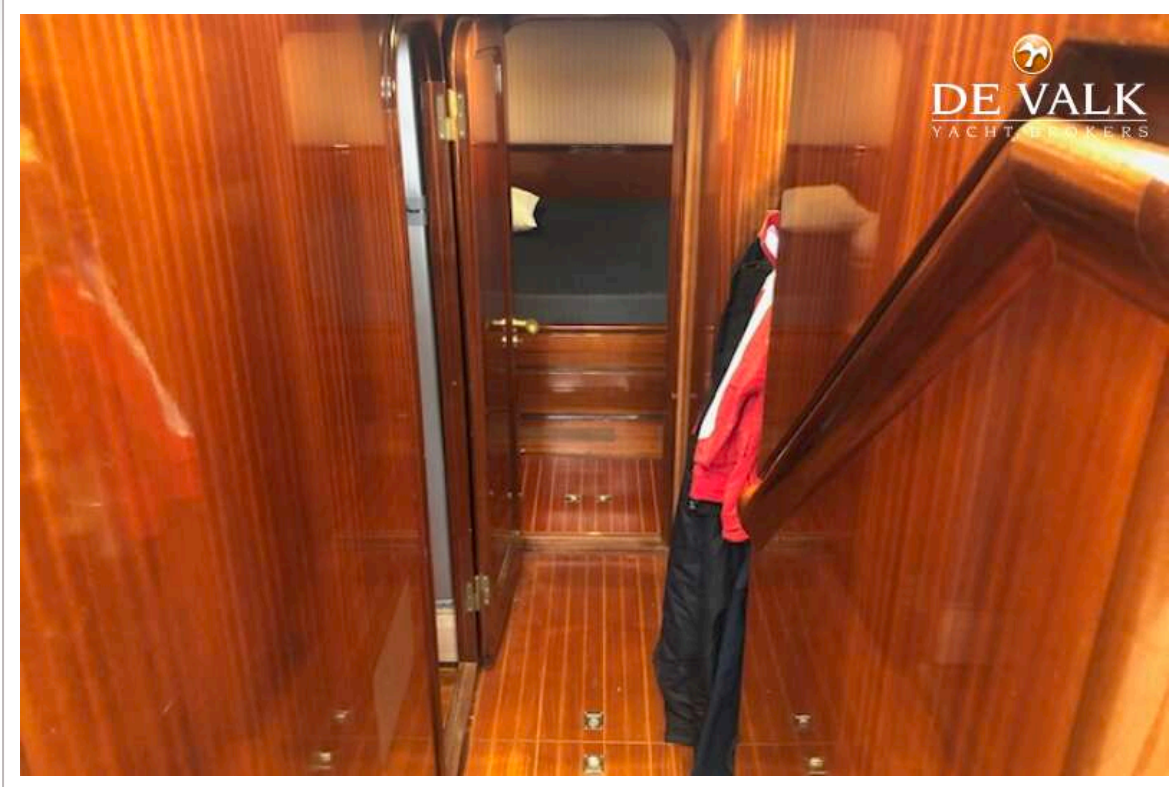


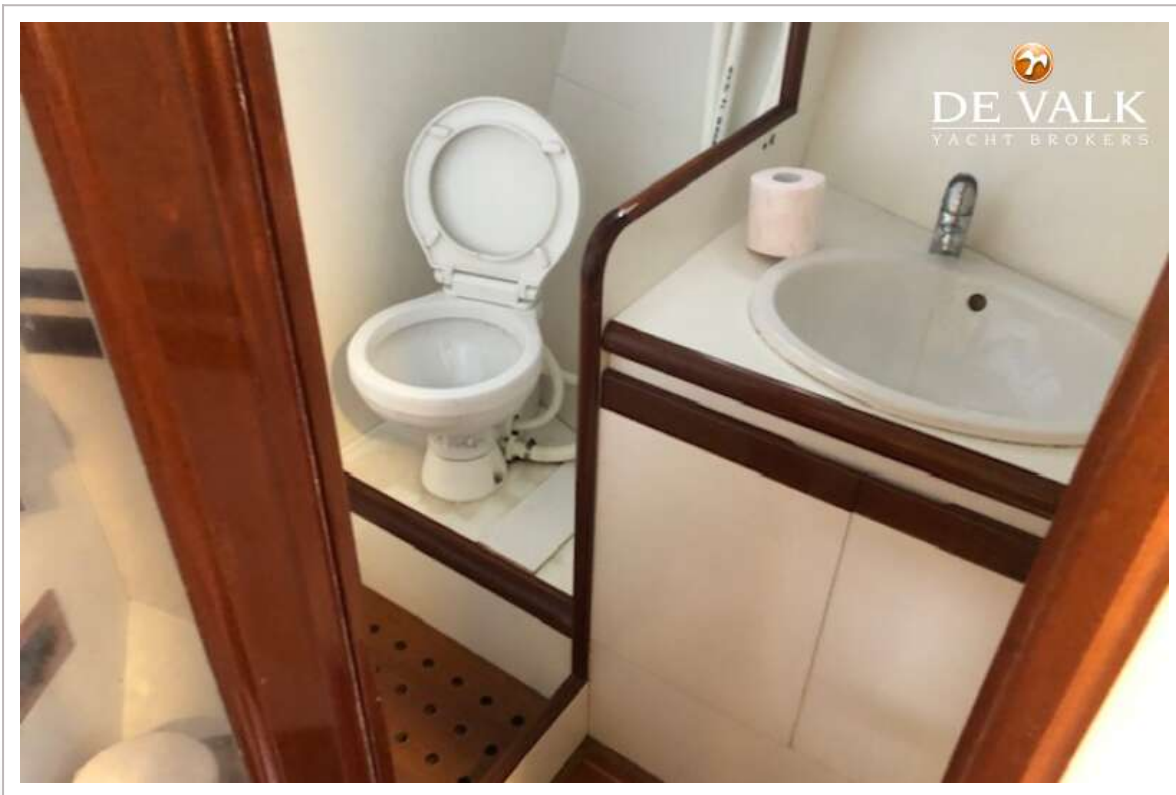
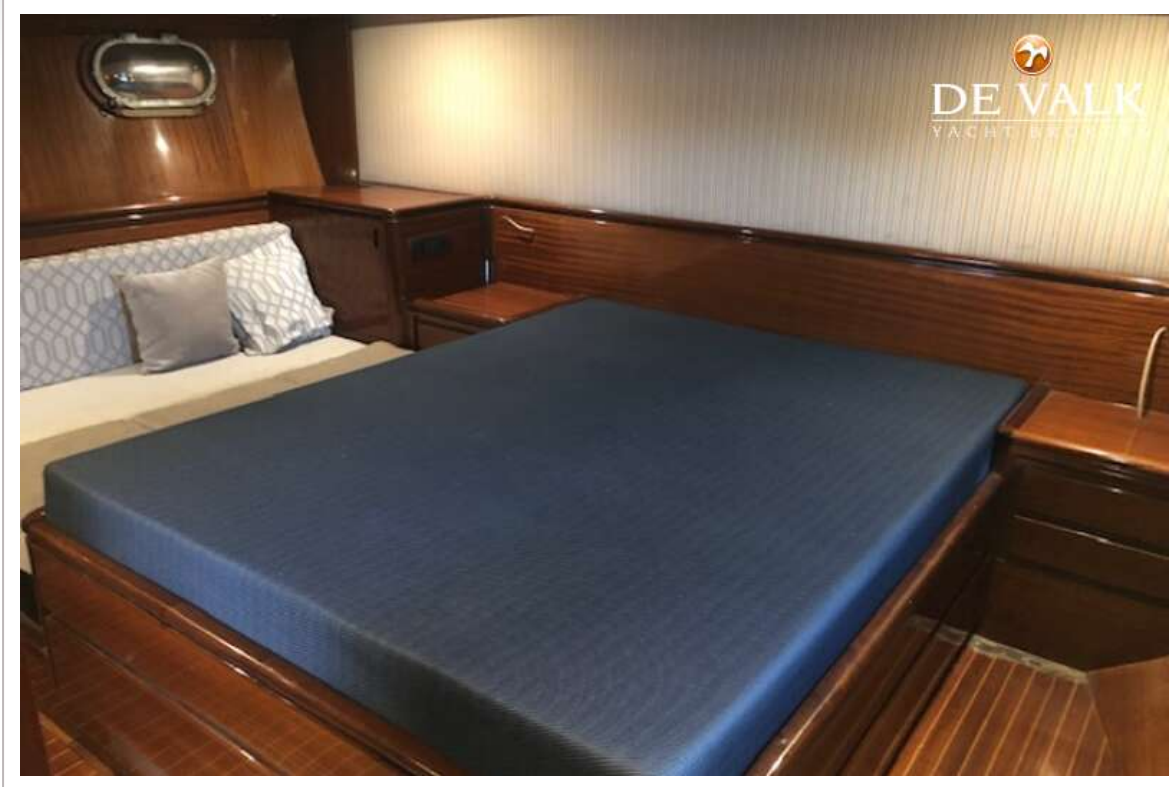












CCYD 75

