



DE VALK  
YACHT BROKERS



## LUNSTROO SCHOONER



DE VALK  
YACHT BROKERS

# LUNSTROO SCHOONER

## BROKER'S COMMENTS

Dutch built Classic Schooner, designed by Lunstroof. This sturdy sailing yacht was refitted in 2012. The hull was sandblasted and a complete new Awl Grip paint system was applied. New teak decking, masts refitted and varnished, new rigging etc. Please contact us for more details! She will be auctioned on June 8th 2016 in cooperation with Schipveiling and BVA Auctions. For further details and viewing days go to: <https://en.bva-auctions.com/auction/index/20855> Starting price of the auction EUR. 150.000, offers can be made from June 1th 2016 on the website of BVA.

*Leonard Bonnema*

## SPECIFICATIONS

<b>Dimensions</b>	23.05 x 4.80 x 2.30 (m)	<b>Builder</b>	Jachtwerf J.Kompier BV
<b>Built</b>	1996	<b>Cabins</b>	4
<b>Material</b>	Steel	<b>Berths</b>	9
<b>Engine(s)</b>	1 x Ford Lehman 2725E diesel	<b>Hp/Kw</b>	135.00 (hp), 99.22 (kw)
<b>Asking price</b>	sold (VAT )	<b>Lying</b>	Spain

## CONTACT

<b>Sales office</b>	De Valk Amsterdam B.V.	<b>Telephone</b>	+31 (0)35 5829014
<b>Address</b>	Peperstraat 7 1411 PX Naarden NL	<b>E-mail</b>	amsterdam@devalk.nl

## DISCLAIMER

These particulars are given in good faith as supplied but cannot be guaranteed.



# LUNSTROO SCHOONER

## GENERAL

Model	LUNSTROO SCHOONER
Type	sailing yacht
LOA (m)	23,05
LWL (m)	18,15
Beam (m)	4,80
Draft (m)	2,30
Year built	1996
Builder	Jachtwerf J.Kompier BV
Country	The Netherlands
Designer	Lunstroo
Displacement (t)	42
Ballast (tonnes)	lead 9,5
Gross tonnage	36
Net tonnage	11
Hull material	steel
Hull colour	white
Hull shape	S-bilged
Superstructure material	steel
Deck material	steel
Deck finish	teak
Cockpit deck finish	teak
Antifouling (year)	2018
Fuel tank (litre)	1200
Freshwater tank (litre)	1500
Blackwater tank (litre)	300
Wheel steering	hydraulic
Inside helm position	yes
More info on paintwork	Awl Grip (2018)

## ACCOMMODATION



# LUNSTROO SCHOONER

Cabins	4
Berths	9
Open cockpit	yes
Headroom saloon (m)	2,20
Heating	Kabola
Aft Cabin	yes
Dinette	yes
Galley	yes
Sink	yes
Cooker	yes
Oven	yes
Fridge	2
Hot water system	on central heating Kabola
Owners cabin	yes
Bathroom	en suite
Toilet	en suite
Toilet system	electric
Shower	yes

## MACHINERY

No of engines	1
Make	Ford Lehman
Type	2725E
HP	135,00
kW	99,22
Fuel	diesel
Year installed	1994
Engine hours	Ca 1000
Drive	shaft
Gearbox	Velvet 3:1
Engine controls	mechanical



# LUNSTROO SCHOONER

Propeller blades	3
Electric bilge pump	yes
Electrical installation	12 / 24 / 220
Generator	Mitshubishi
Generator 2	Spare

## NAVIGATION

Compass	yes
Depth sounder	yes
Log	yes
VHF	yes
VHF handheld	yes
Autopilot	yes
Radar/GPS/plotter	yes
Navtex	yes

## EQUIPMENT

Gangway	yes
Anchor	yes
Windlass	yes
Capstan	yes
Davits	yes
Sea railing	yes
Fenders	yes
Mooring lines	yes
TV	yes

## RIGGING

Rigging	schooner
Material mast	wood Oregon Pine



# LUNSTROO SCHOONER

Mainsail	yes
Mainsail cover	yes
Fisherman staysail	yes
Jib	yes
Staysail	yes



# LUNSTROO SCHOONER



BROKERAGE | CHARTER | BERTHS | FINANCE | INSURANCE | YACHT MANAGEMENT  
**DE VALK**  
YACHT BROKERS



**This yacht will be auctioned,  
for further details please visit [www.devalk.nl](http://www.devalk.nl)**

**Dit schip zal worden geveild,  
voor meer informatie gaat u naar [www.devalk.nl](http://www.devalk.nl)**

**Dieses Schiff wird versteigert,  
für weitere informationen besuchen Sie [www.devalk.nl](http://www.devalk.nl)**

[WWW.DEVALK.NL](http://WWW.DEVALK.NL)



**DE VALK**  
YACHT BROKERS



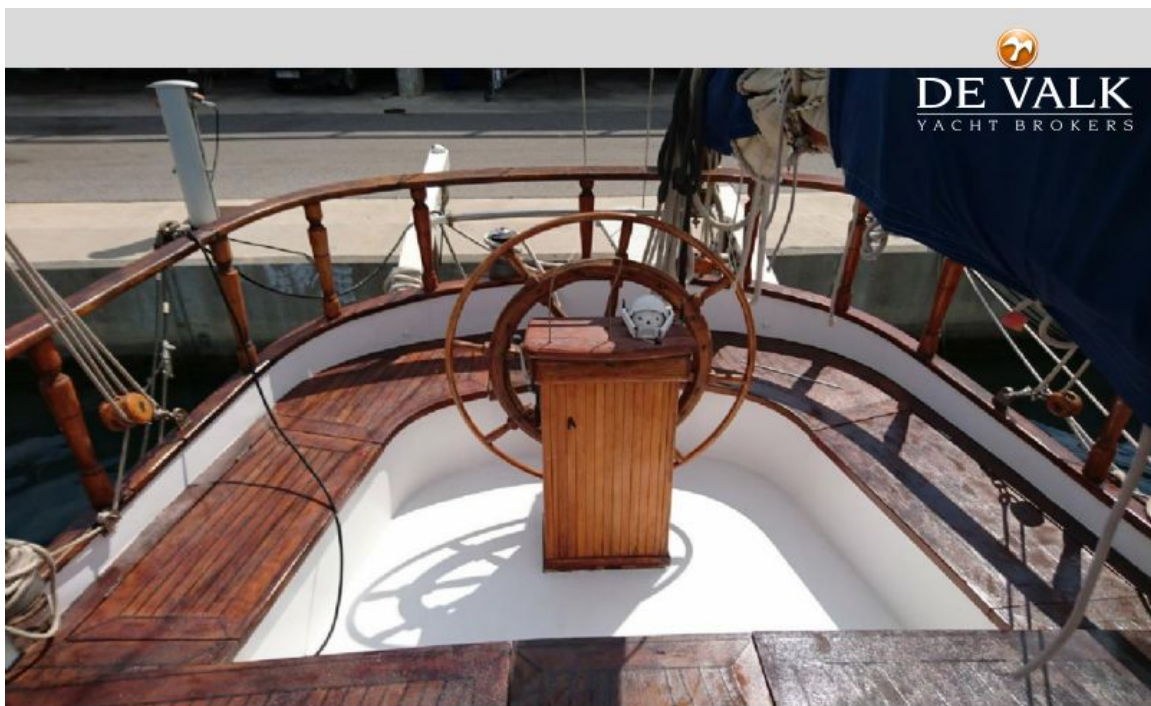


# LUNSTROO SCHOONER

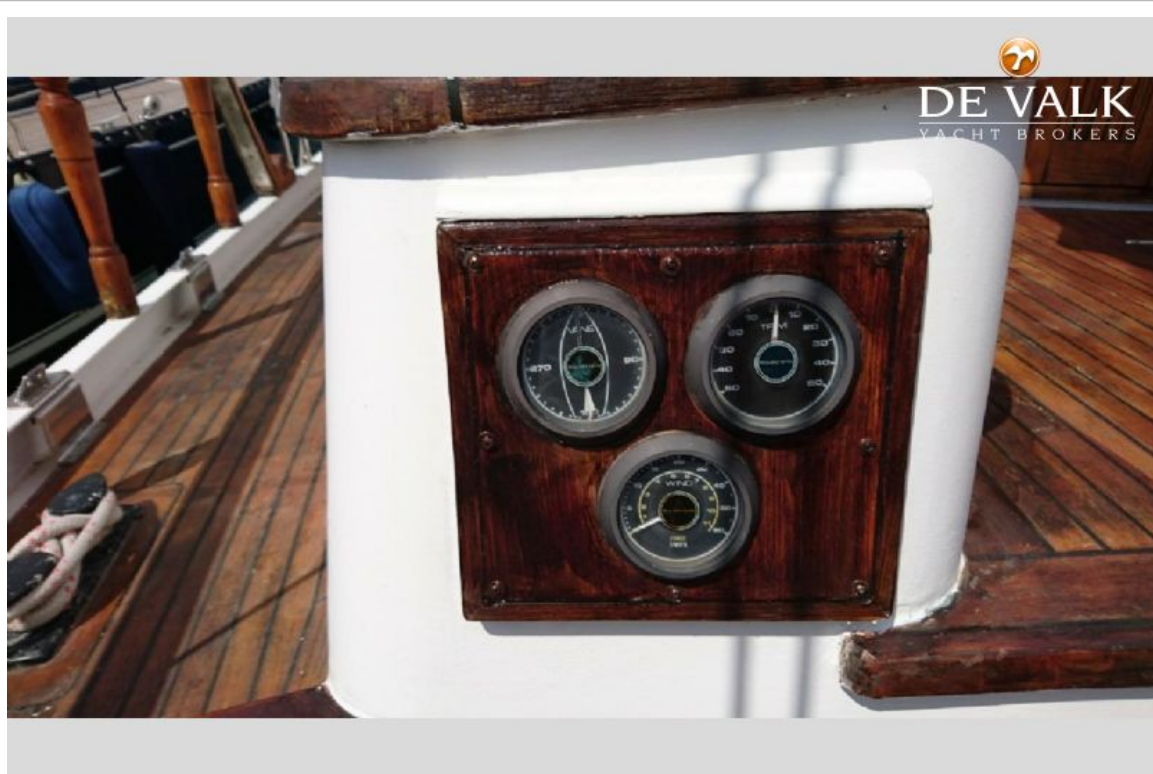
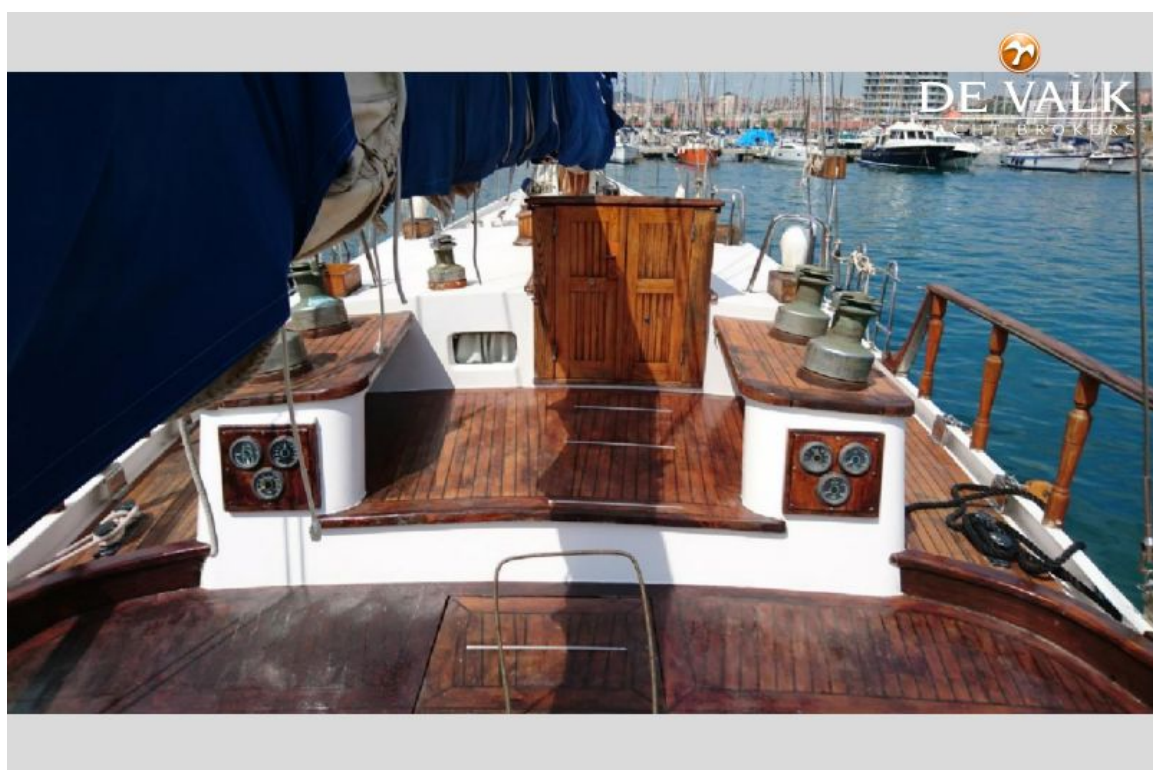




# LUNSTROO SCHOONER

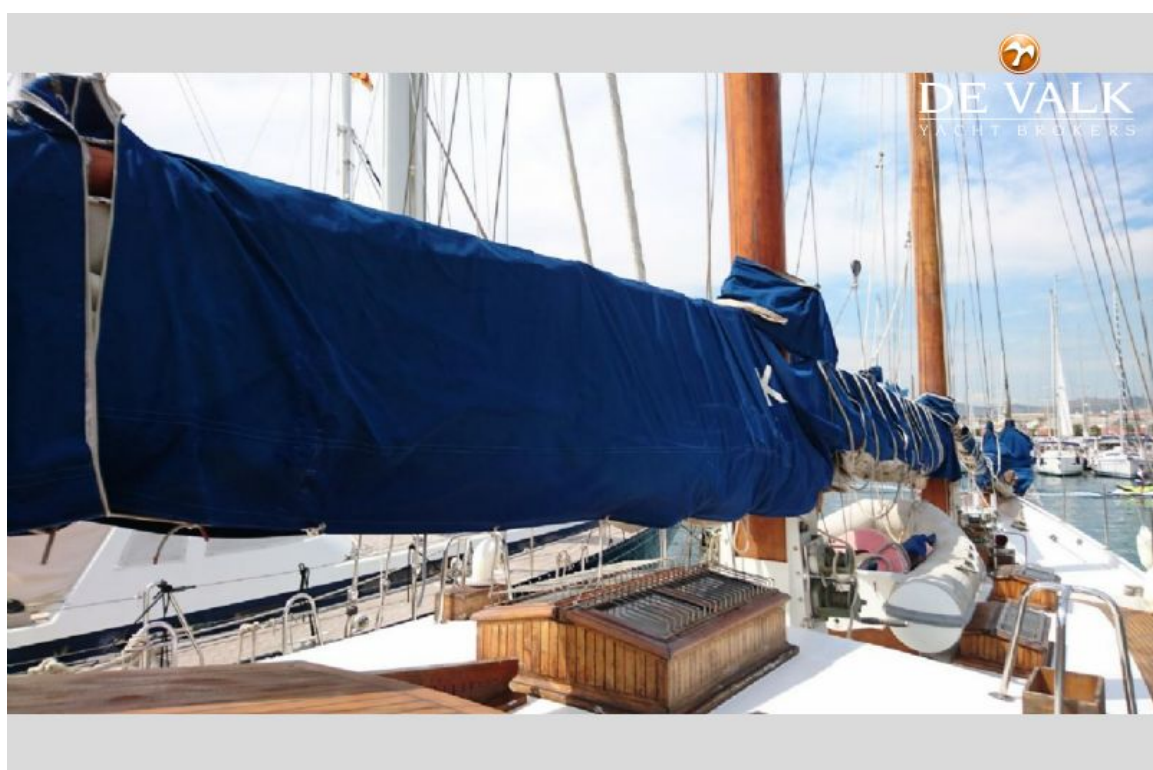


# LUNSTROO SCHOONER

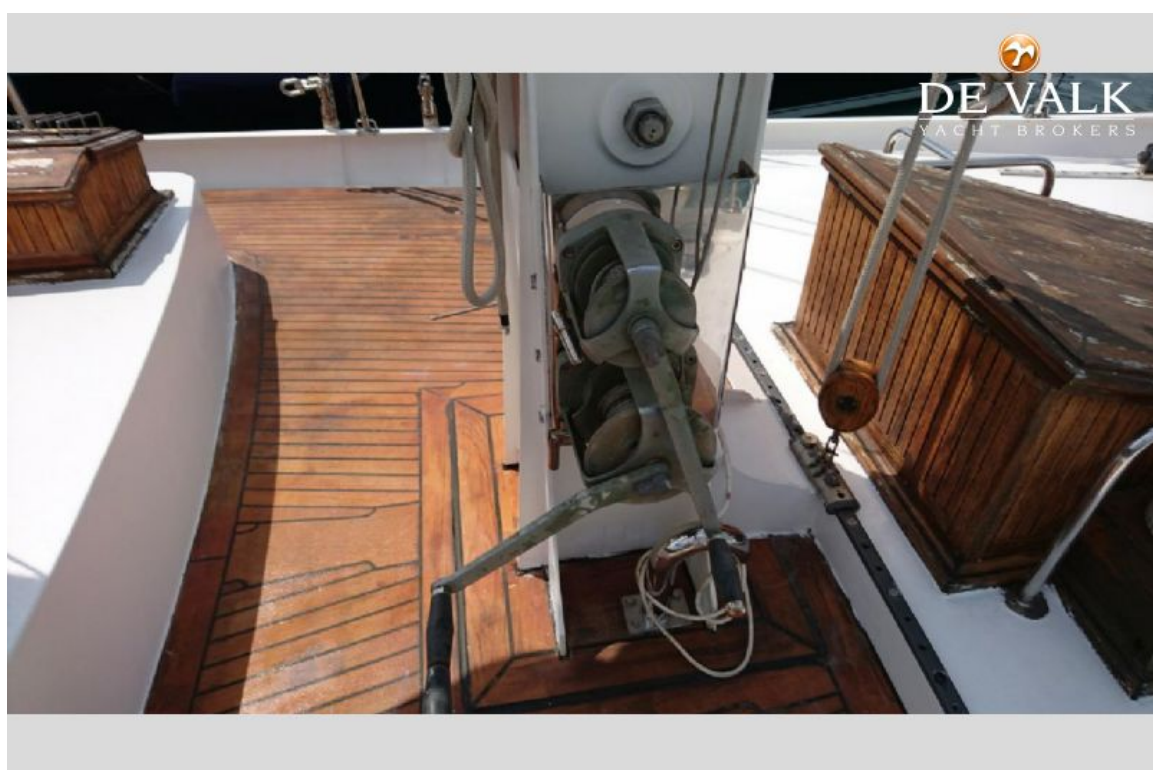
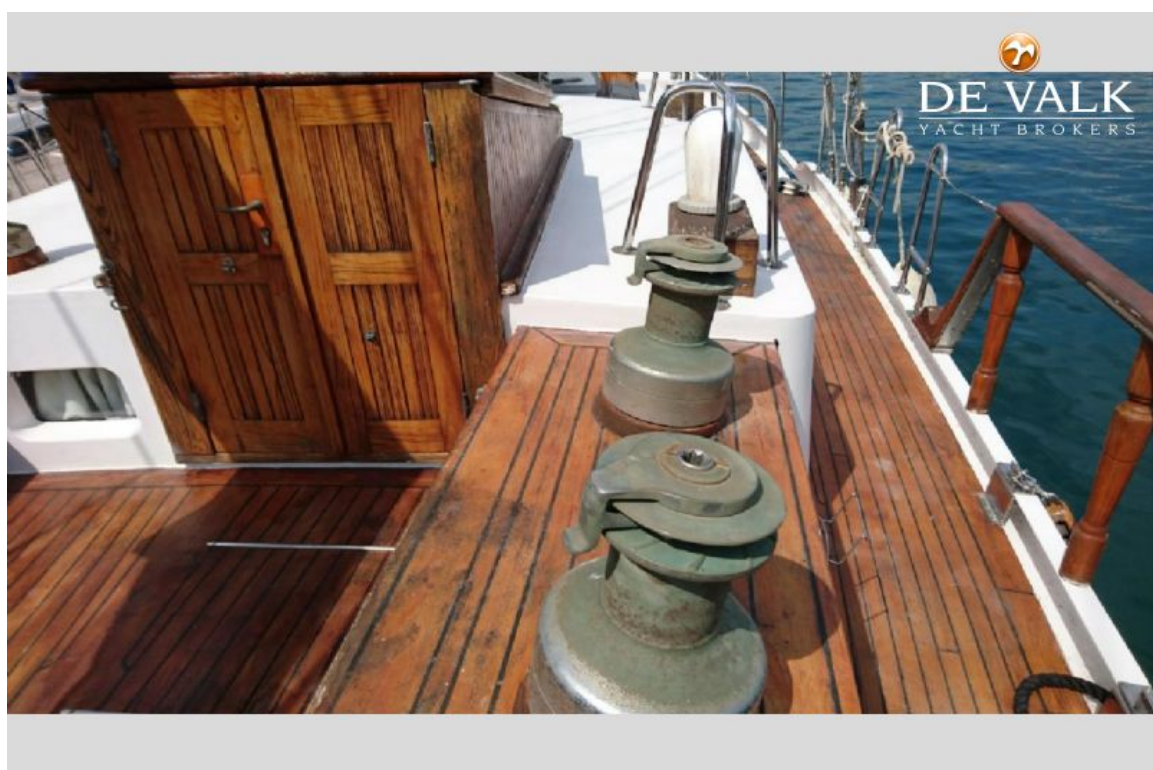




# LUNSTROO SCHOONER

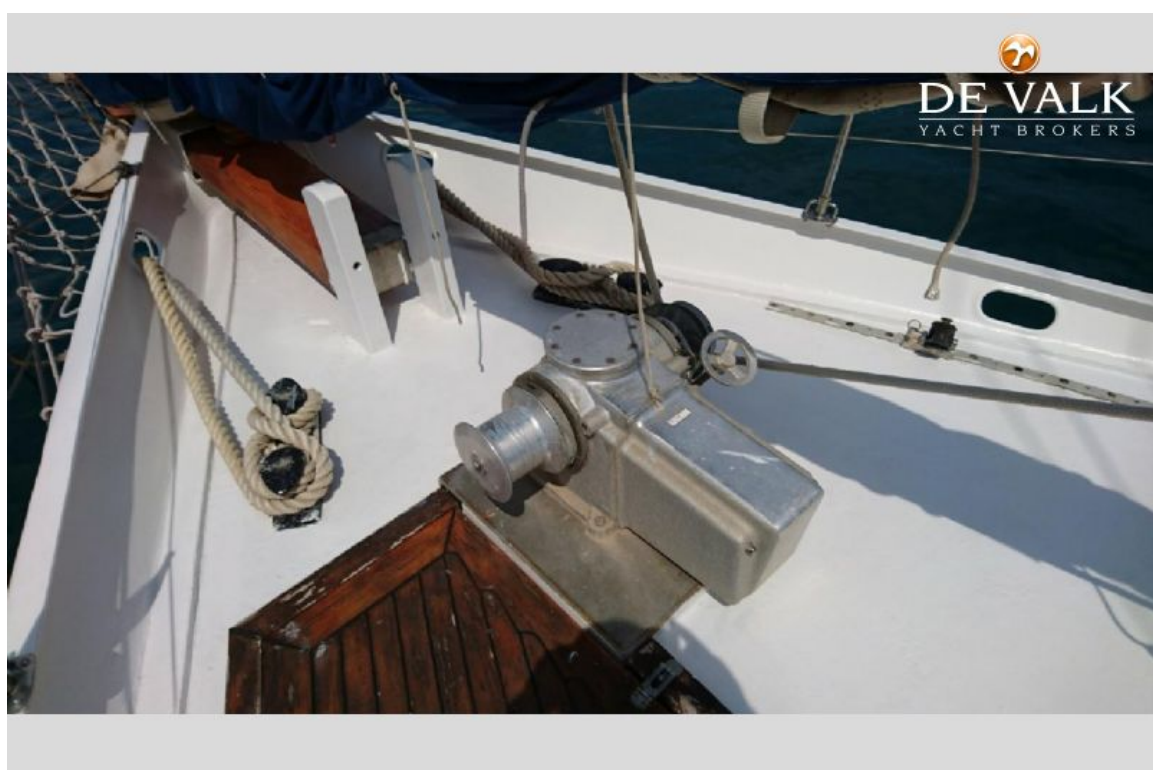
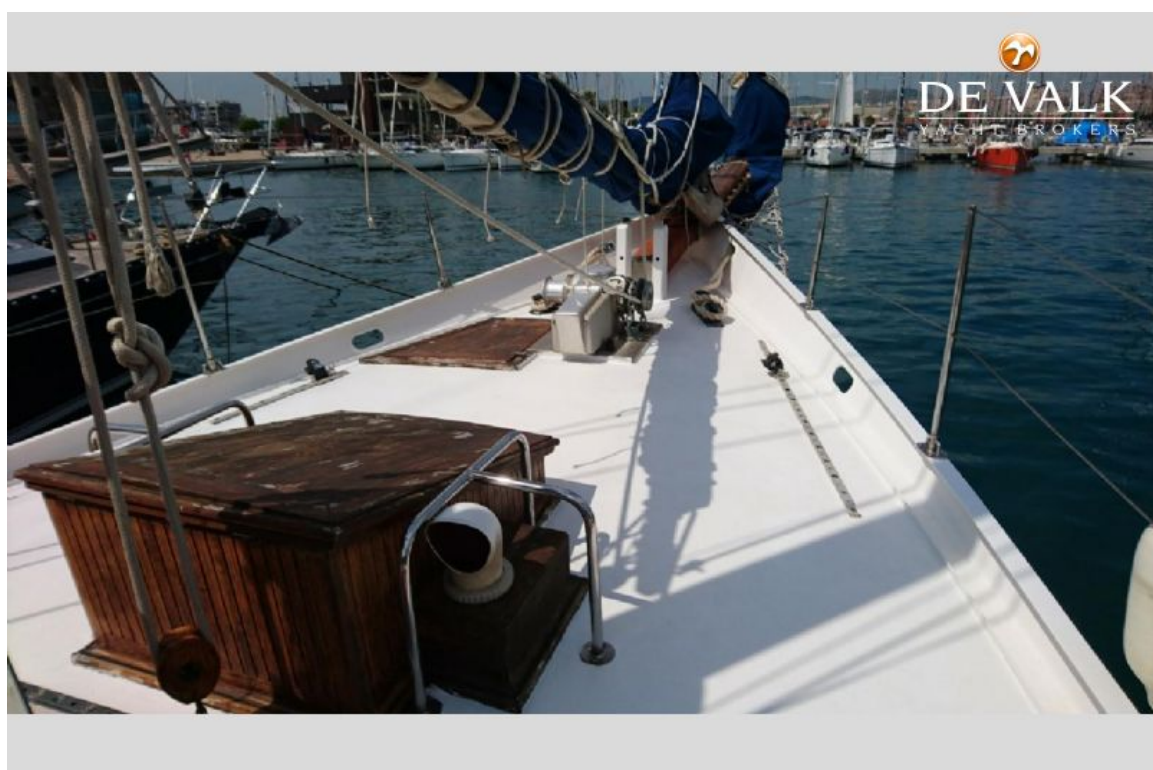


# LUNSTROO SCHOONER



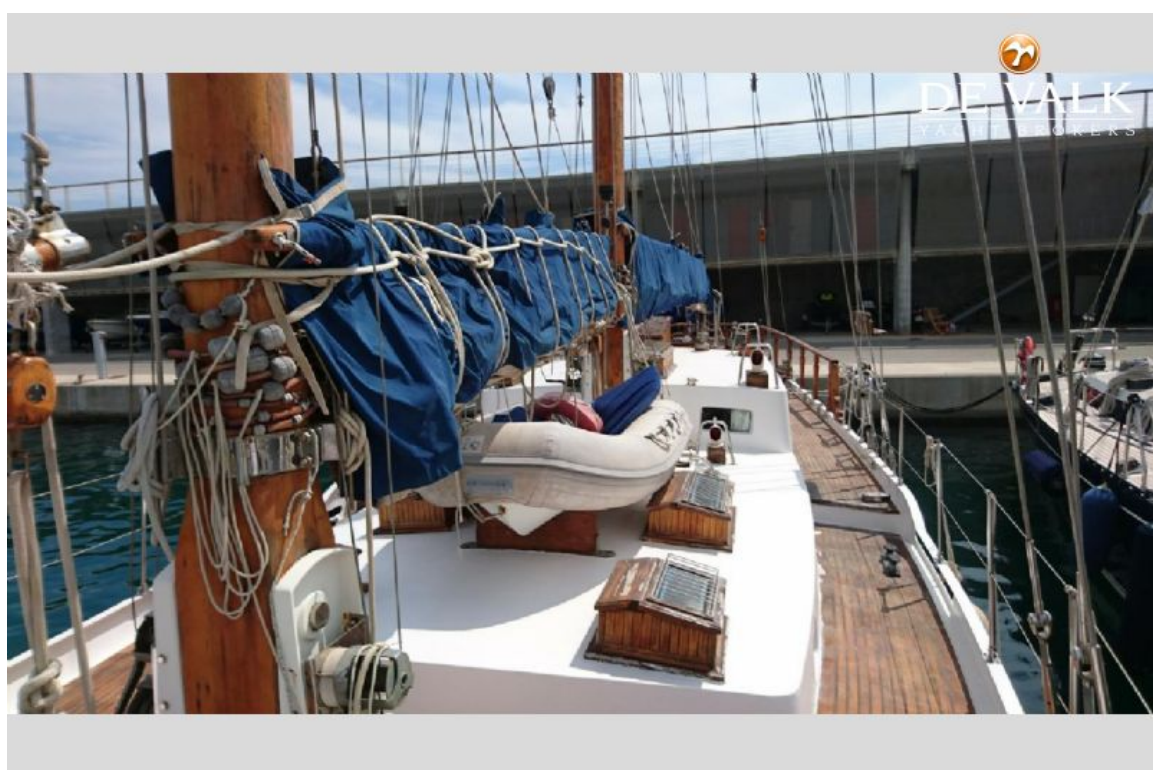
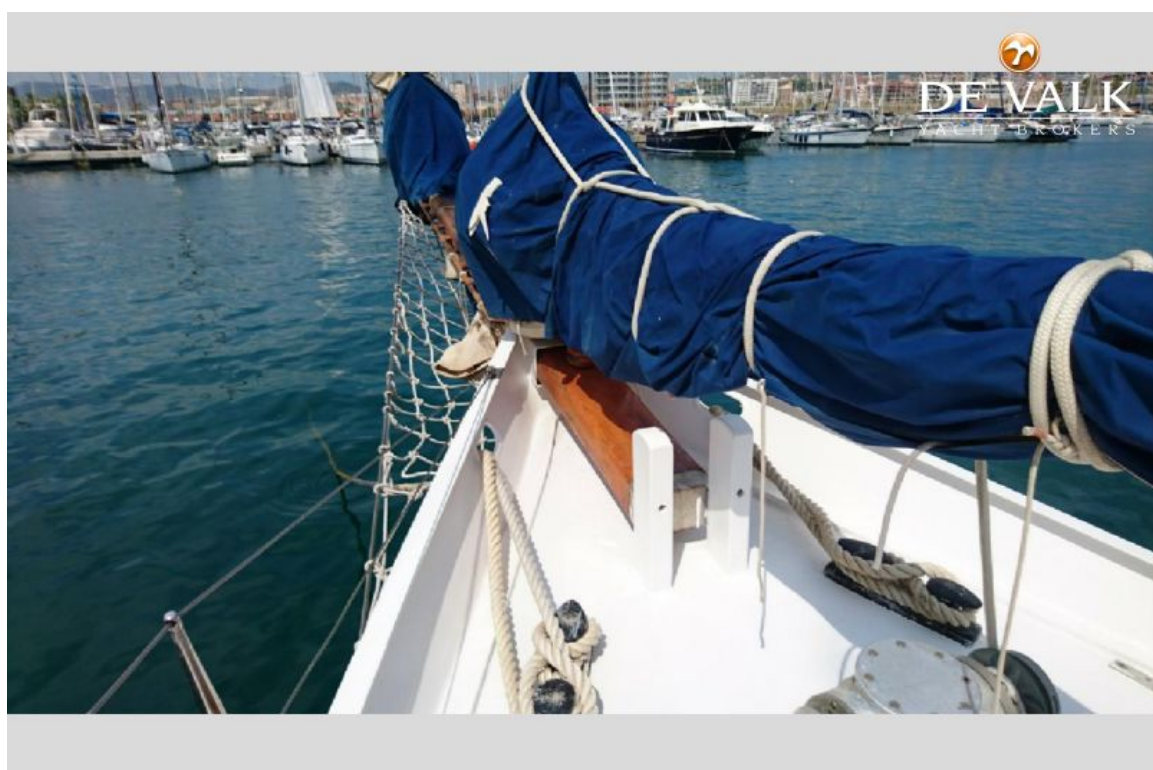


# LUNSTROO SCHOONER

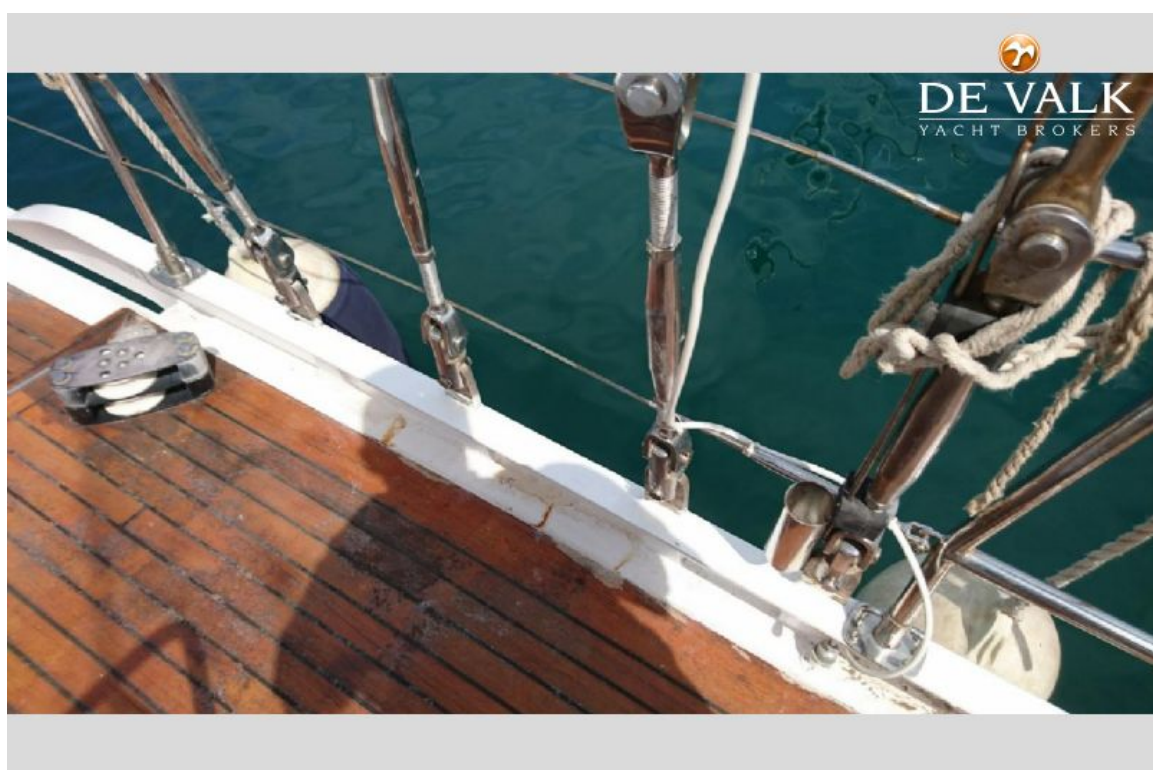
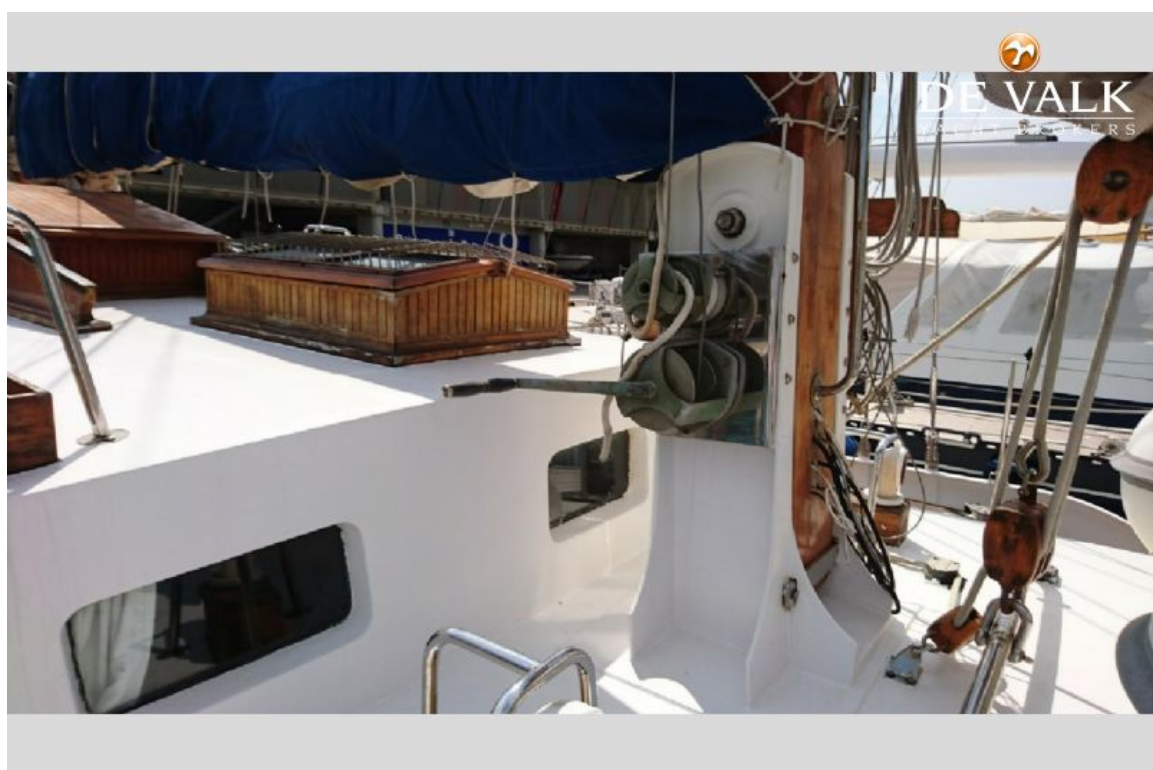




# LUNSTROO SCHOONER

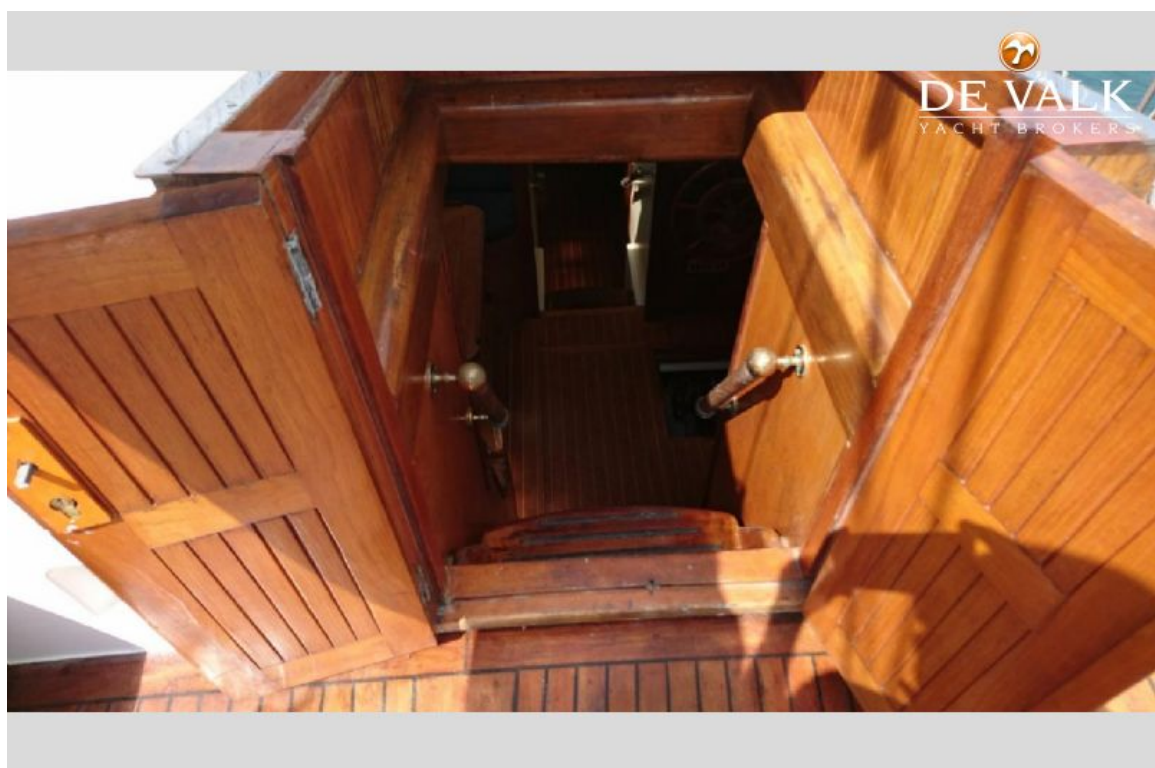
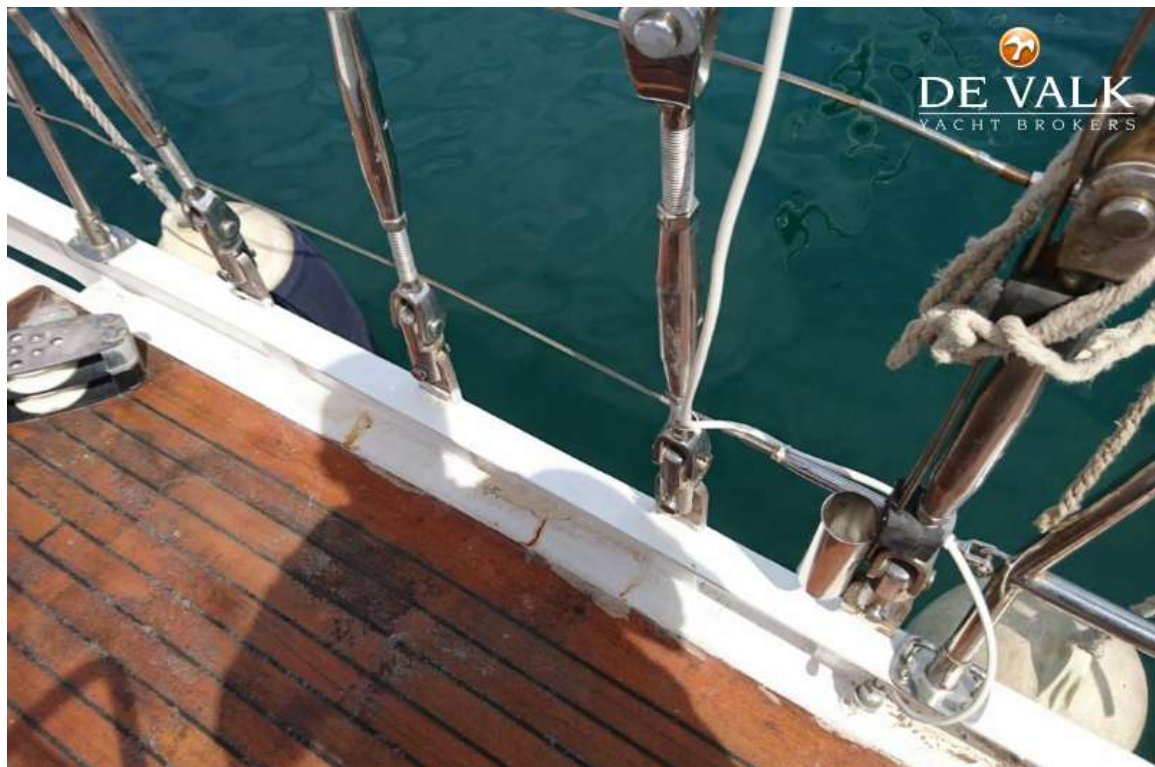


# LUNSTROO SCHOONER

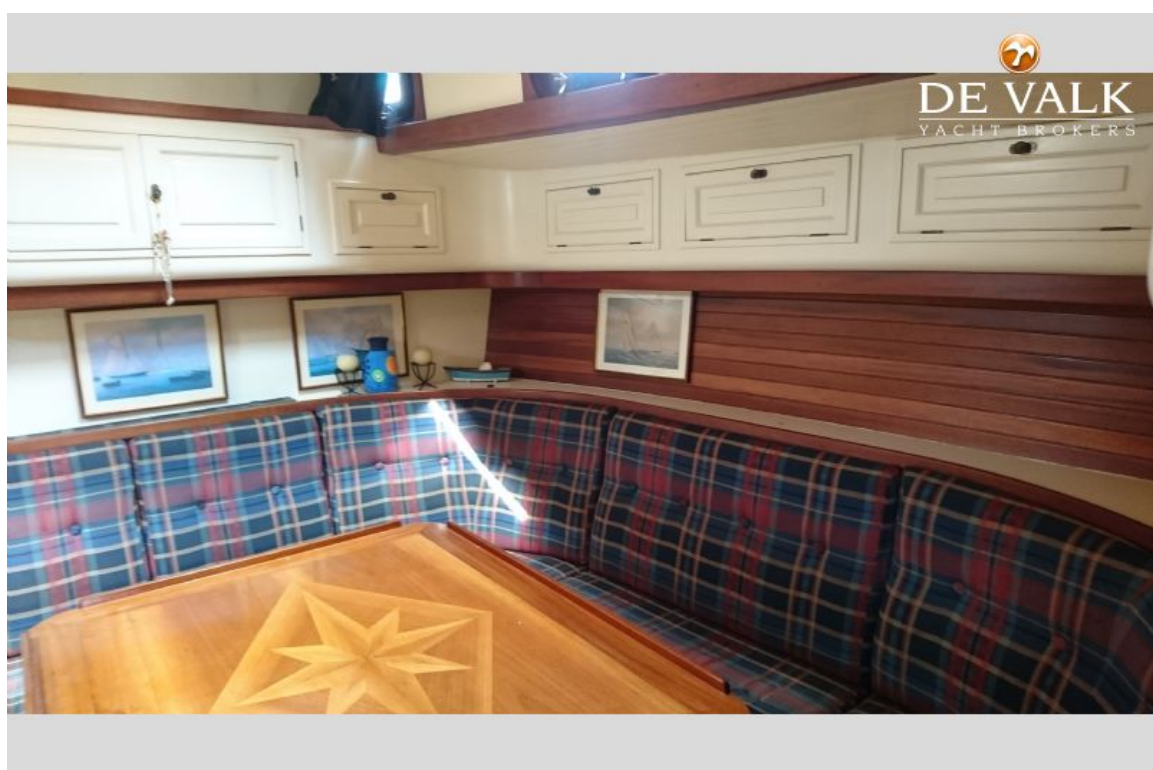
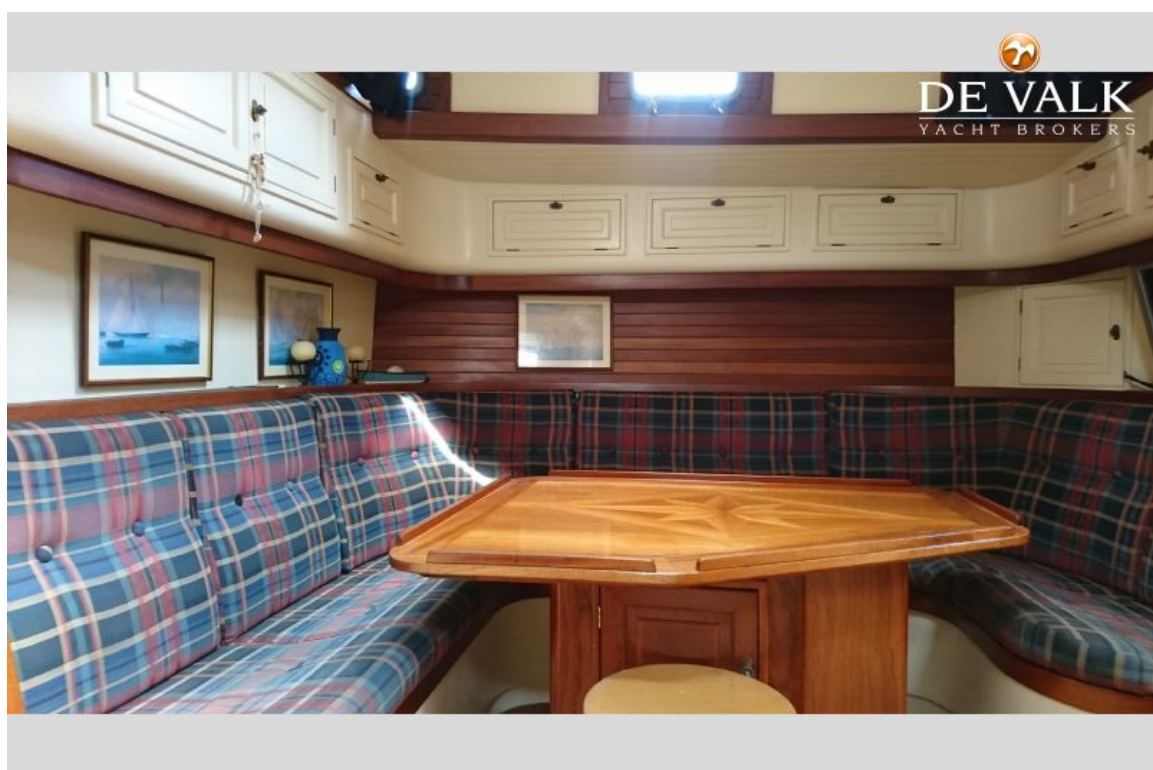




# LUNSTROO SCHOONER

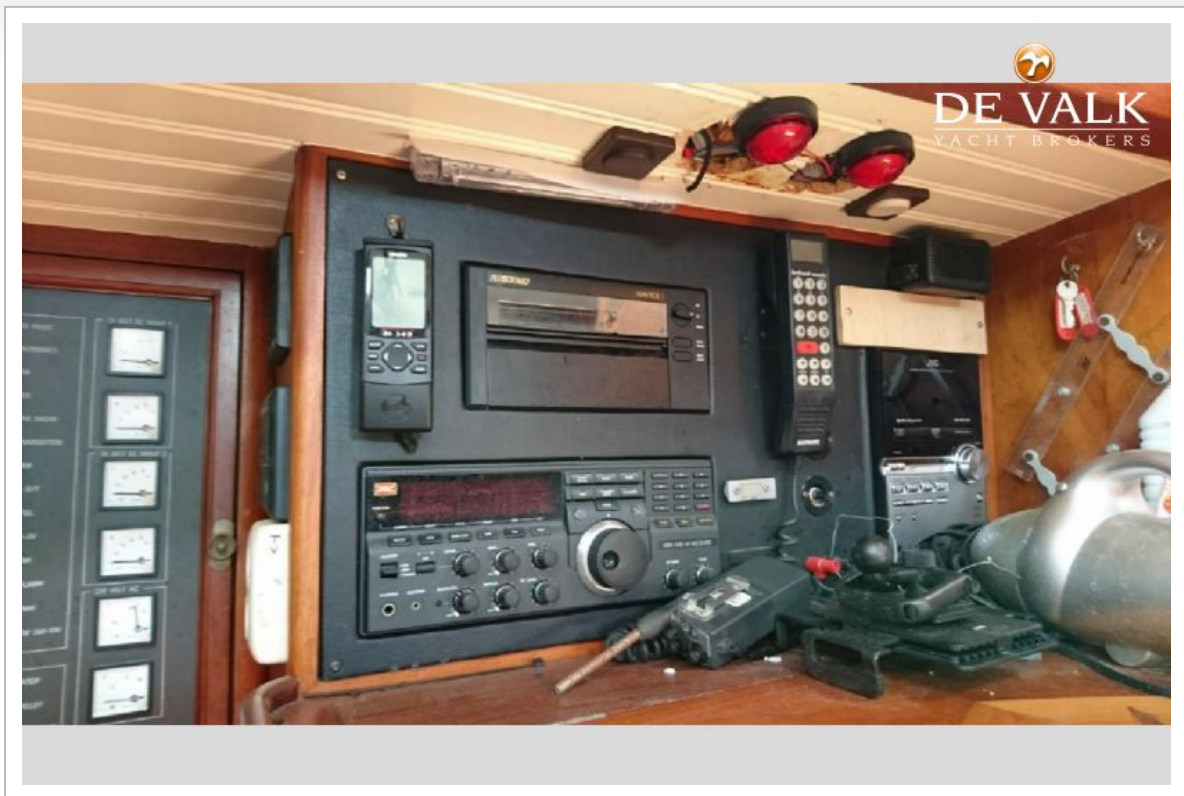


# LUNSTROO SCHOONER



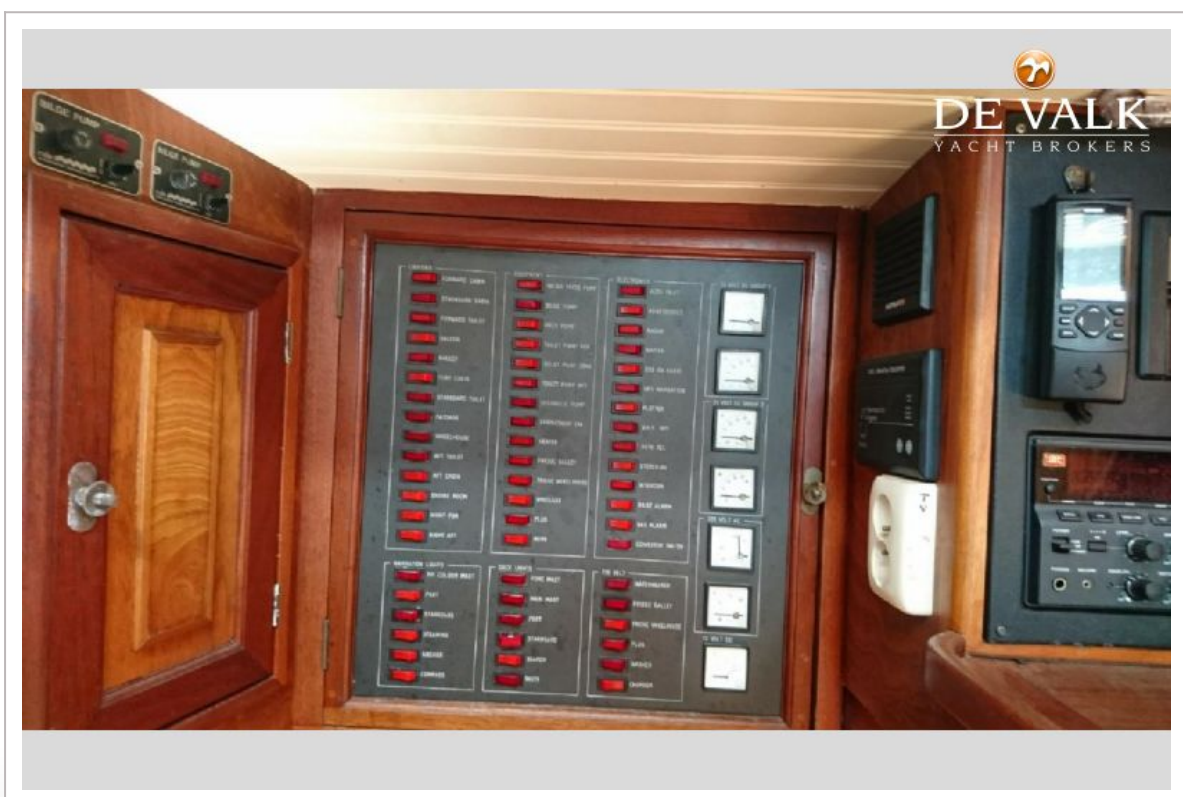
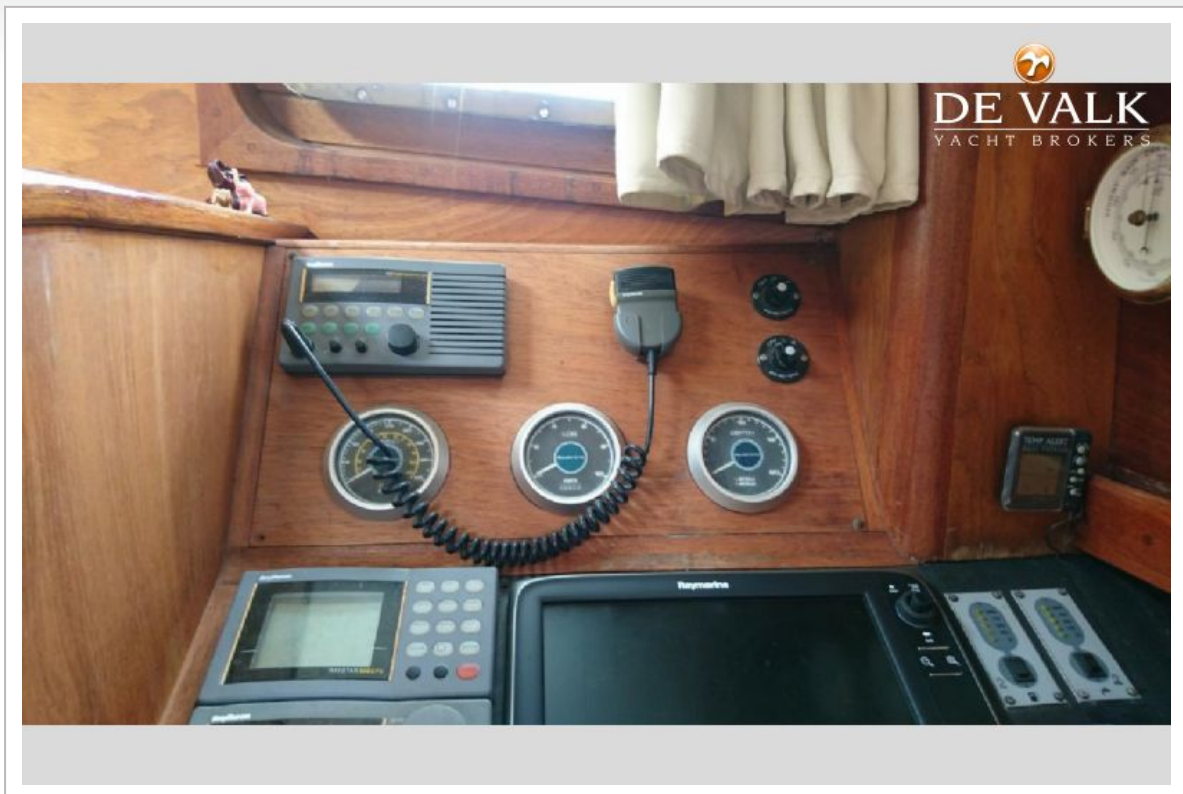


# LUNSTROO SCHOONER

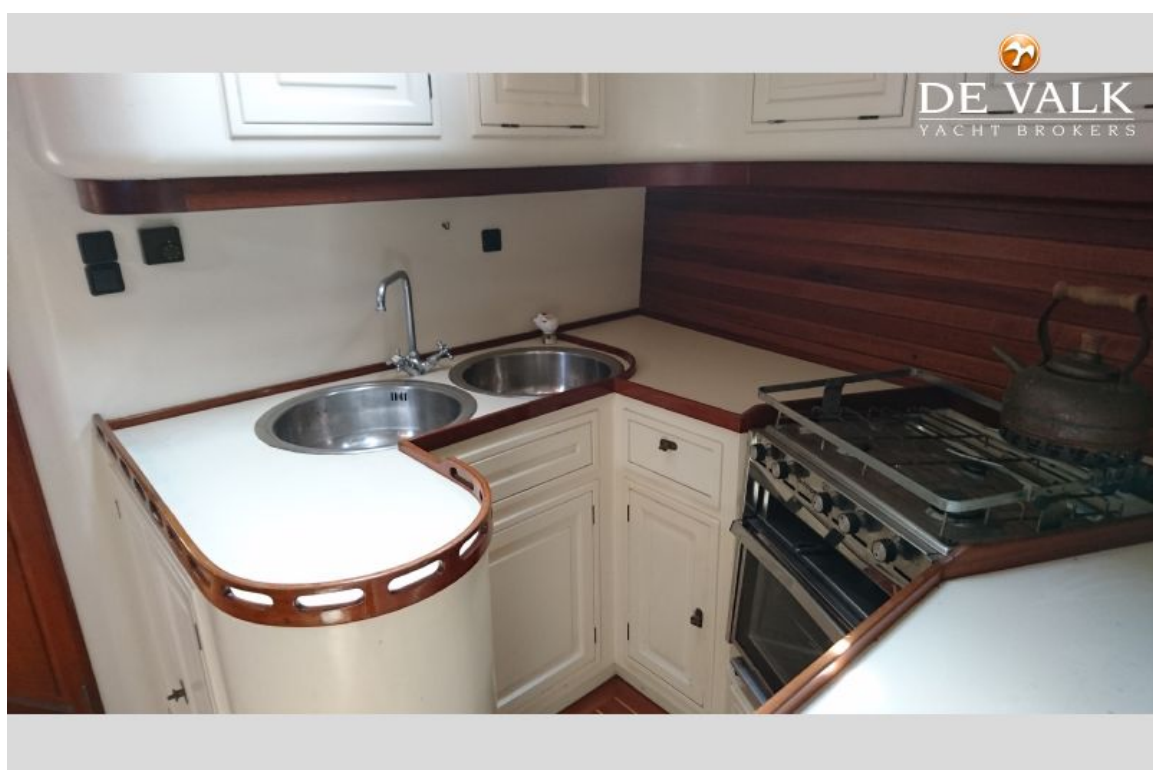
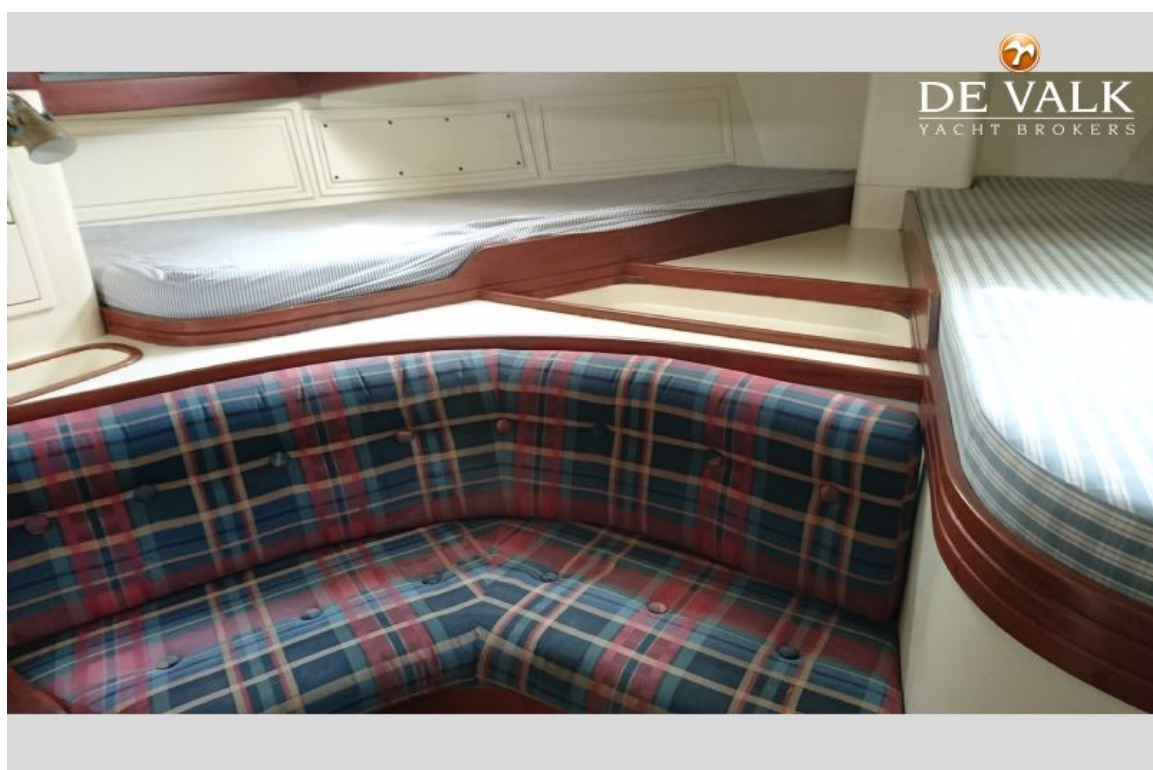




# LUNSTROO SCHOONER

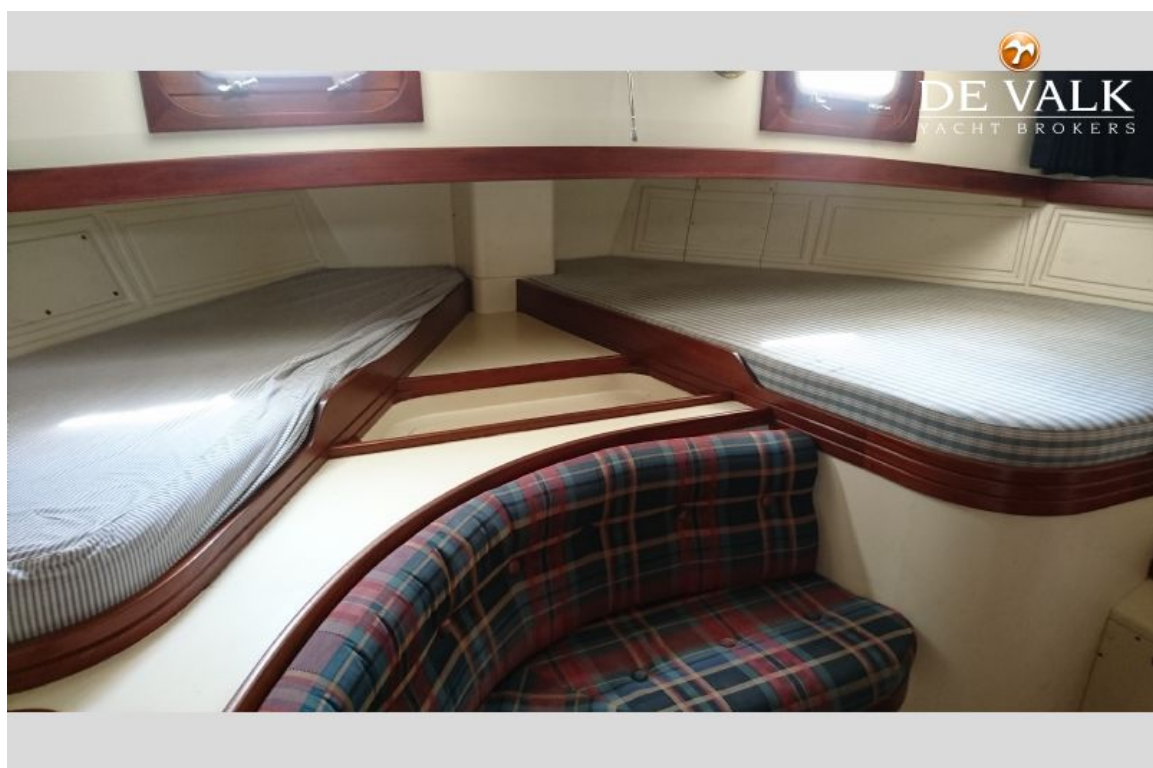
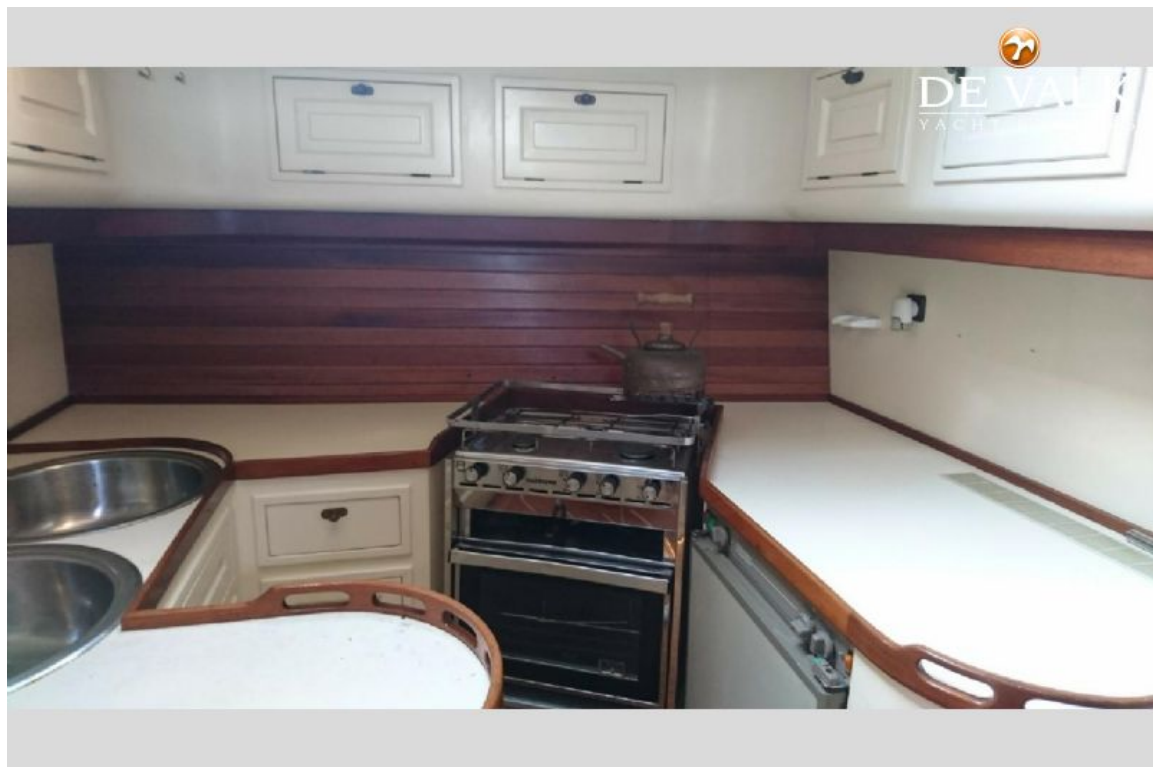


# LUNSTROO SCHOONER

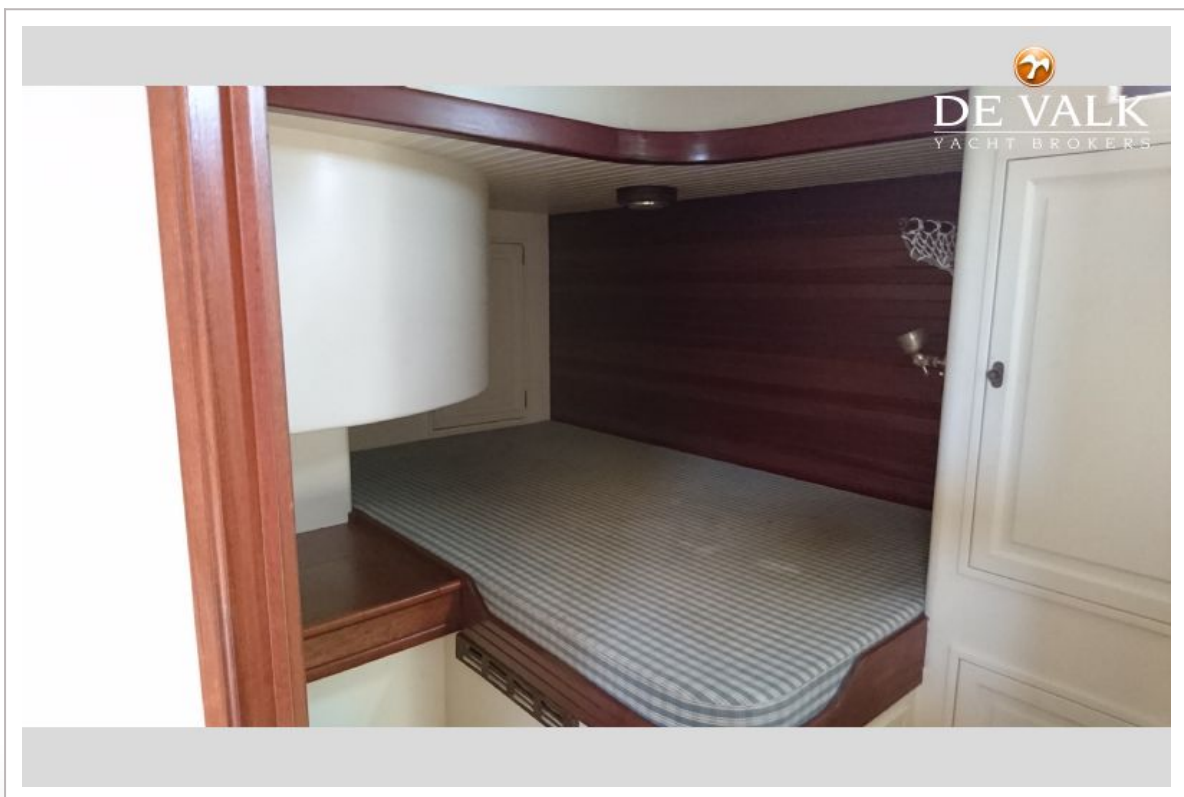




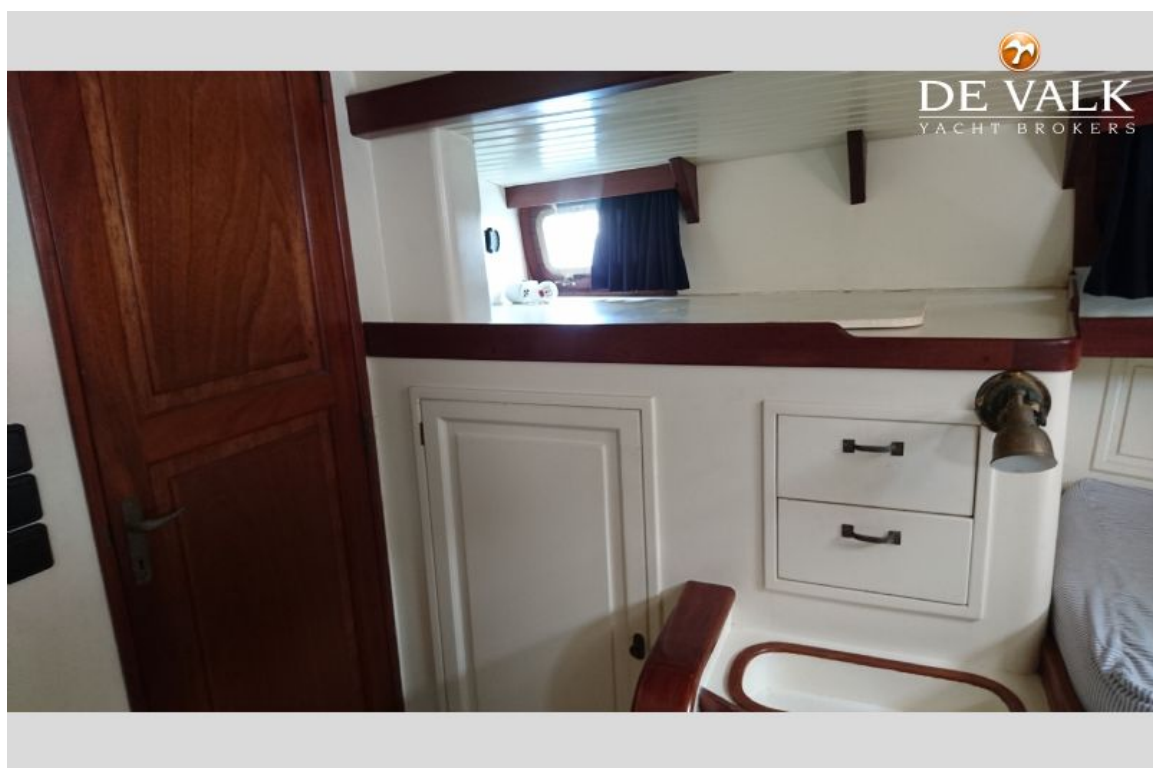
# LUNSTROO SCHOONER



# LUNSTROO SCHOONER



# LUNSTROO SCHOONER





# LUNSTROO SCHOONER

