



BROCHURE IMAGE

FAIRLINE SQUADRON 52

FAIRLINE SQUADRON 52

BROKER'S COMMENTS

The Fairline Squadron 52 was ahead of its time through her innovative design that includes a midships master cabin. She offers a lot of comfort and space for 4 plus an optional 2 crew. This example has several useful options such as a central Kabola heating, air conditioning, bow- and stern thruster, hydraulic passarelle and collapsible radar mast. The boat needs some cosmetic attention such new teak decking, refixing of interior linings and cleaning or renewal of carpets. She is however priced accordingly at a much lower asking price than comparable boats.

Nick Lanting

SPECIFICATIONS

Dimensions	16.25 x 4.69 x 1.11 (m)	Builder	Fairline Boats
Built	1997	Cabins	3
Material	GRP	Berths	6
Engine(s)	2 x Volvo Penta TAMD122P EDC diesel	Hp/Kw	2 x 610.00 (hp), 448.35 (kw)
Asking price	sold (VAT)	Lying	contact Sint Annaland

CONTACT

Sales office	De Valk Sint Annaland B.V.	Telephone	+31 (0)166 601 000
Address	Koelhuisweg 4 4697 RM Sint Annaland NL	E-mail	sintannaland@devalk.nl

DISCLAIMER

These particulars are given in good faith as supplied but cannot be guaranteed.



GENERAL

Model	FAIRLINE SQUADRON 52
Type	motor yacht
LOA (m)	16,25
LWL (m)	13,93
Beam (m)	4,69
Draft (m)	1,11
Air draft (m)	5,41
Headroom (m)	1,89
Year built	1997
Builder	Fairline Boats
Country	Great Britain
Designer	Bernard Olesinski / Fairline
Displacement (t)	18,3
CE norm	B
Hull material	GRP
Hull colour	white
Hull shape	deep-V
Superstructure material	GRP
Rubbing strake	stainless steel With rubber insert
Deck material	GRP
Deck finish	teak
Superstructure deck finish	non-skid moulded in
Cockpit deck finish	teak
Antifouling (year)	2017
Window frame	stainless steel
Window material	tempered glass
Deckhatch	yes
Portholes	stainless steel
Flybridge	yes
Flybridge cover	yes



Radar arch	collapsible
Mast can be lowered	electric
Fuel tank (litre)	1091
Fuel tank 2 (litre)	1091
Level indicator (fuel tank)	yes
Freshwater tank (litre)	572
Level indicator (freshwater)	yes
Wheel steering	hydraulic
Inside helm position	Headroom 1,68m
Flybridge helm position	hydraulic
Extra info	teak on sidedecks, flybridge and bathing platform needs to be renewed

ACCOMMODATION

Cabins	3
Berths	6
Crew cabin	yes
Crew berths	2
Interior	cherry
Floor	carpet Needs cleaning
Open cockpit	yes
Saloon	yes
Headroom saloon (m)	1,89
Heating	central hot water Kabola HR400 14kW
Air-conditioning	reverse cycle airco
Chart table	yes
Dinette	Headroom 2,00m
Sliding door to cockpit	yes
Galley	yes
Countertop	plastic
Sink	stainless steel



Cooker	electric 4 burner
Extractor	yes
Microwave/oven combi	Panasonic
Fridge	separate freezer compartment Waeco
Hot water system	220V + engine
Water pressure system	electrical
Crockery	yes
Owners cabin	French bed Headroom 2,01m
Bed length (m)	1,90m x 1,60m
Wardrobe	hanging/drawers/shelves
Bathroom	en suite
Toilet	en suite
Toilet system	electric
Wash basin	in the bathroom
Shower	en suite Headroom 1,90m
Extra info	Bidet
Guest cabin 1	v-bed Headroom 1,89m
Bed length (m)	2,10m x 0,90m
Wardrobe	hanging
Bathroom	en suite
Toilet	en suite
Toilet system	electric
Wash basin	in the bathroom
Shower	en suite Headroom 1,93m
Crew cabin(s)	yes
Toilet (crew)	yes
Toilet system	manual
Wash basin	at the toilet
Shower (crew)	yes
Extra info	without mattresses
Washing machine	yes
Washing machine/dryer combi	in utility room Zanussi



Flybridge	yes
Wet bar	on flybridge

MACHINERY

No of engines	2
Make	Volvo Penta
Type	TAMD122P EDC
HP	610,00
kW	448,35
Fuel	diesel
Year installed	1997
Maximum speed (kn)	30
Engine cooling system	freshwater heat exchanger
Drive	shaft
Engine controls	electrical
Gearbox	hydraulic
Bowthruster	electric Side-Power
Sternthruster	electric Side-Power
Exhaust	watercooled
Propeller type	fixed
Propeller blades	4
Propeller shaft material	stainless steel
Shaft lubrication	water
Manual bilge pump	yes
Electric bilge pump	yes
Bilge alarm	yes
Electrical installation	12V/24V/220V
Generator	silent separator HFL
Running hours generator	644
Batteries	yes
Battery monitor	Mastervolt



Battery charger/inverter	2 x Mastervolt Mass Combi 24/2500/60
Diode battery combiners	yes
Shorepower	with cable
Trimtabs	hydraulic
Extra info	yes

NAVIGATION

Compass	yes
Compass on flybridge	yes
Electric compass	In autopilot
Depth sounder/log	Autohelm Masterview
Repeater	yes
VHF	Raymarine Ray 240E
Autopilot	Autohelm ST6000+
Rudder angle indicator	yes
Radar/GPS/plotter	Raymarine E80
Navtex	Furuno NX-300
Electronic chart(s)	Navionics Gold Europe West
Navigation lights	yes
Searchlight	yes
Loudhailer	Eagle TPA15T

EQUIPMENT

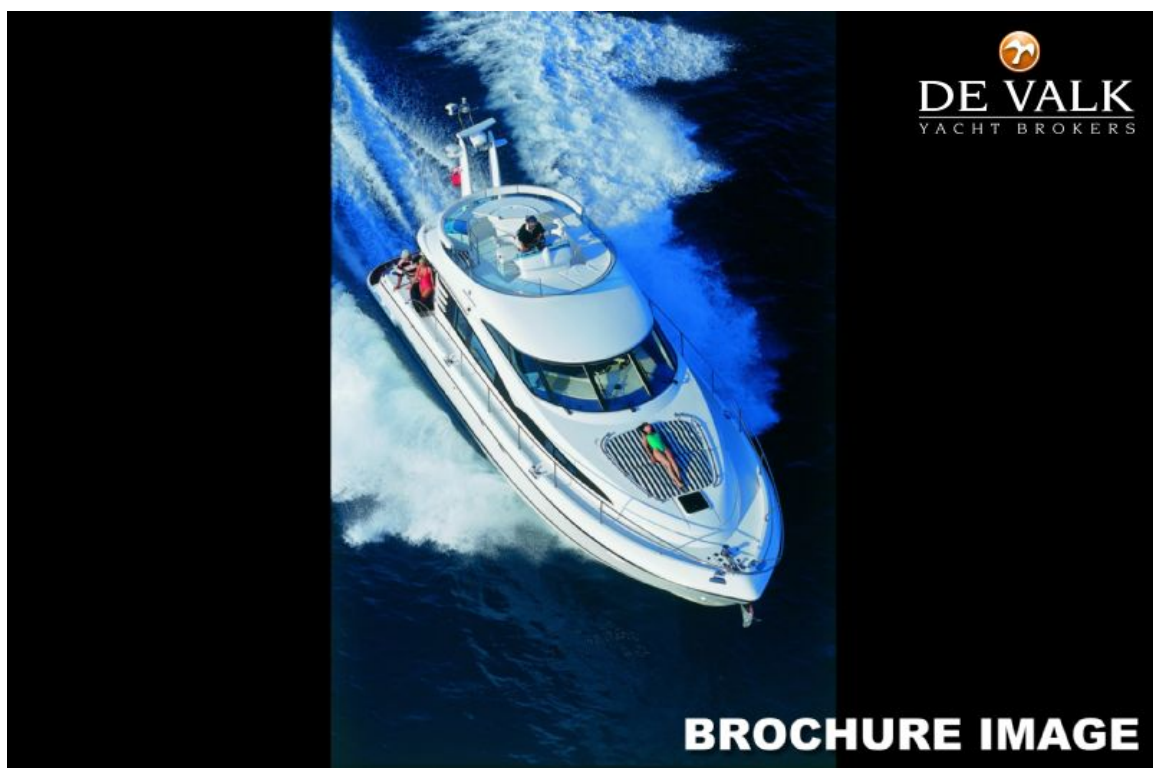
Fixed windscreen	yes
Cockpit cover	yes
Bimini	on flybridge
Cockpit cushions	yes
Cockpit table	yes
Cockpit chairs	yes
Bathing platform	yes
Boarding ladder	stainless steel



FAIRLINE SQUADRON 52

Transom door	2 x
Gangway	Opacmare
Deck shower	yes
Anchor	Delta
Anchor chain	yes
Windlass	electrical
Capstan	on windlass
Sea railing	stainless steel
Grab rail (superstructure)	stainless steel
Pulpit	yes
Wiper	3 x
Horn	electric
Fenders	yes
Mooring lines	yes
TV	in saloon LG 50cm
TV receiver	yes
TracVision ball	Intellian M7
Radio-cd player	yes
Speakers in salon	yes
Clock - barometer	yes
Fire extinguisher	yes
Auto extinguisher system	in engineroom



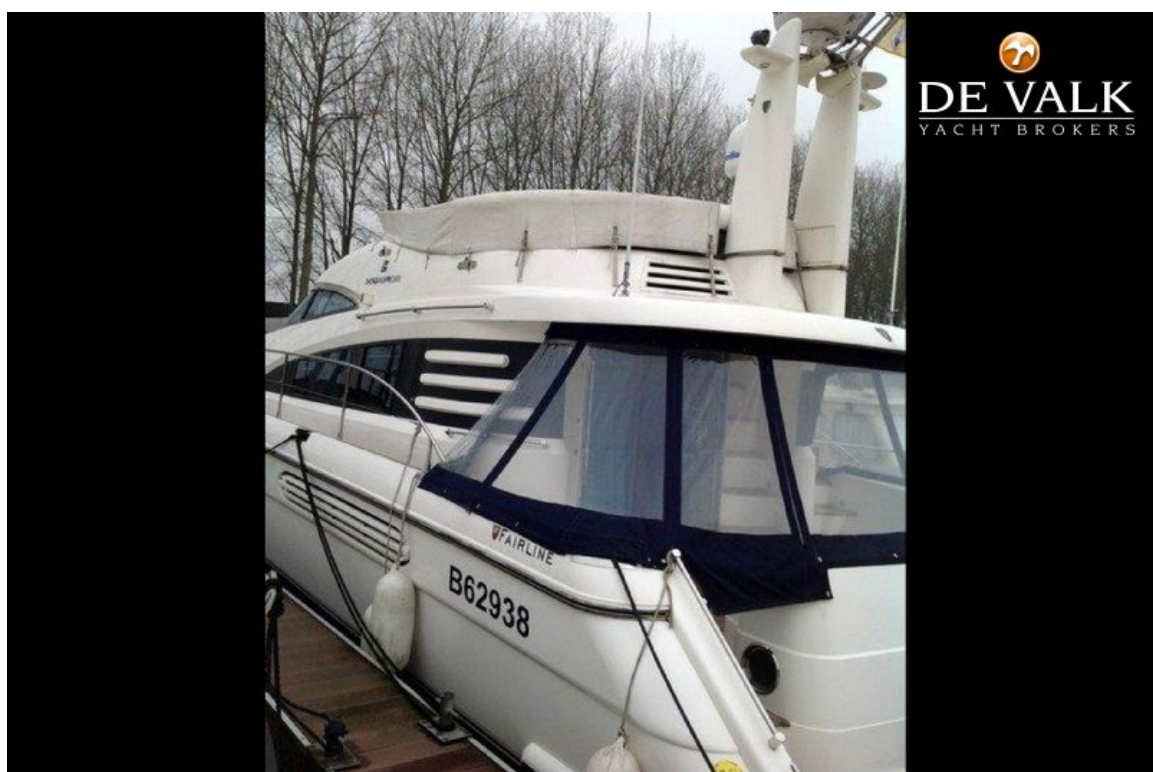




FAIRLINE SQUADRON 52



FAIRLINE SQUADRON 52

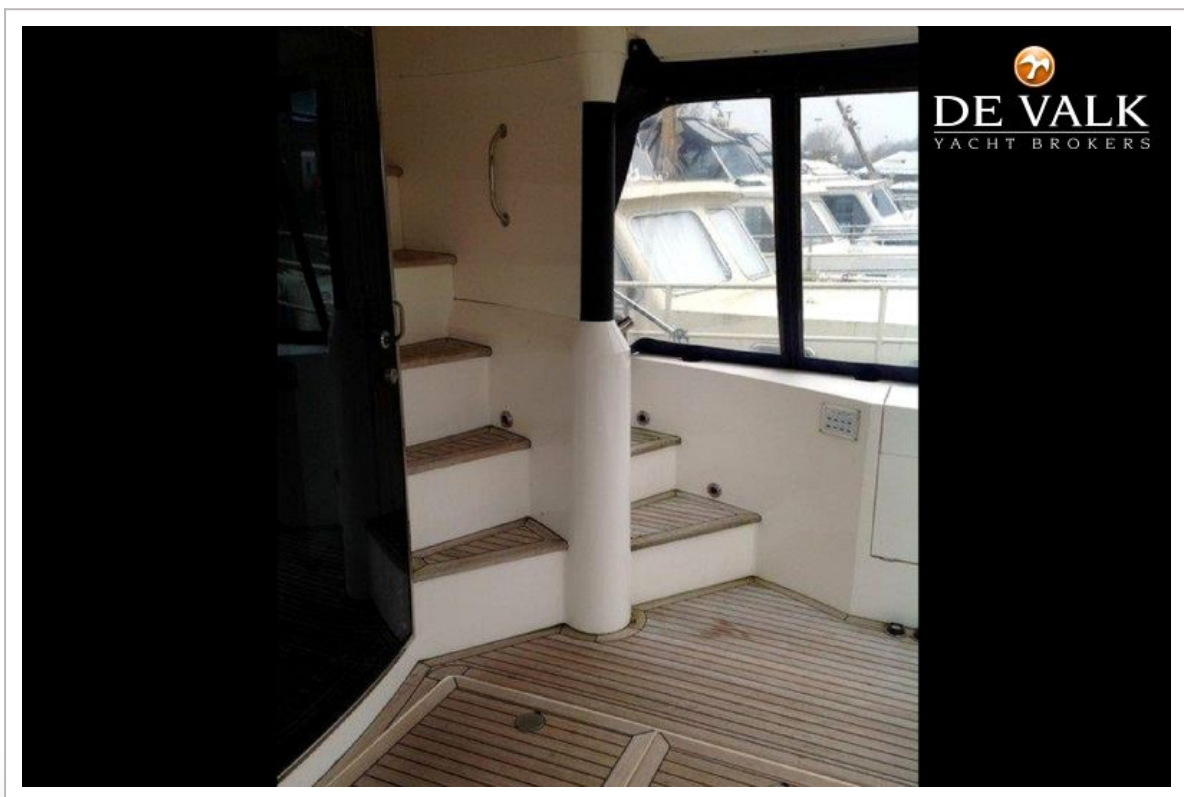
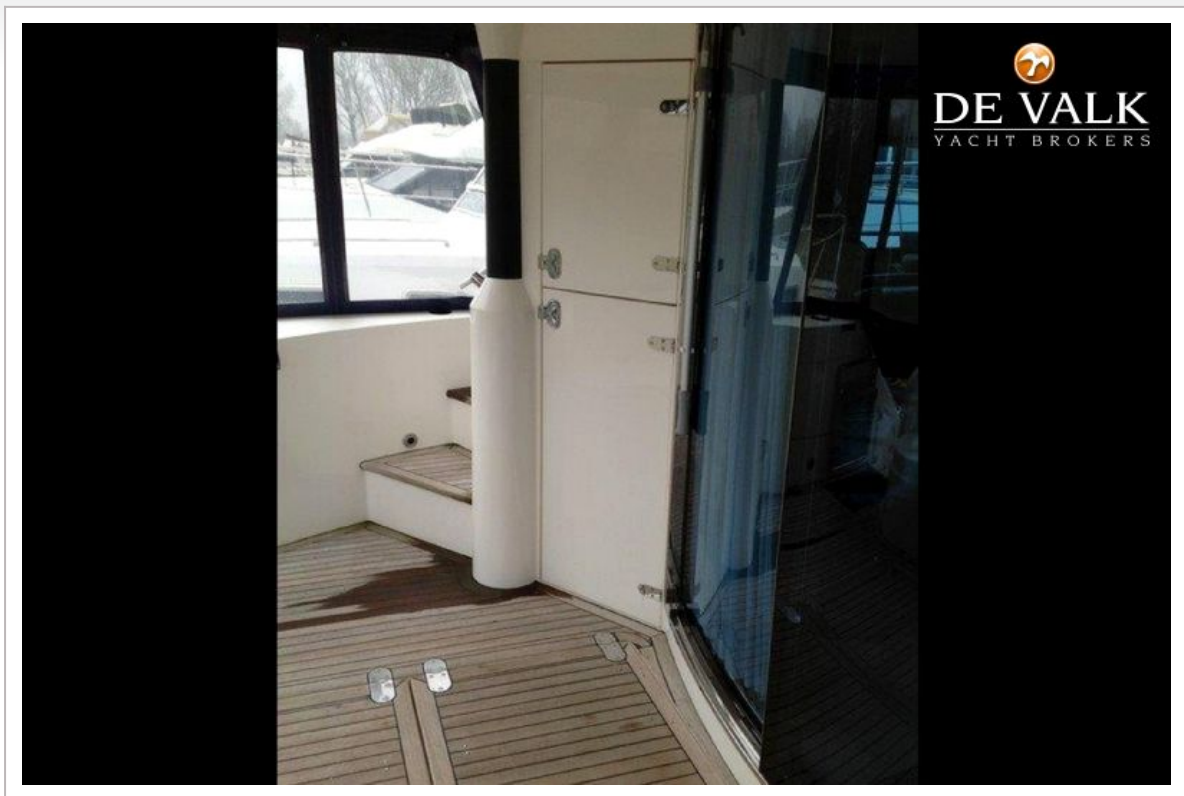






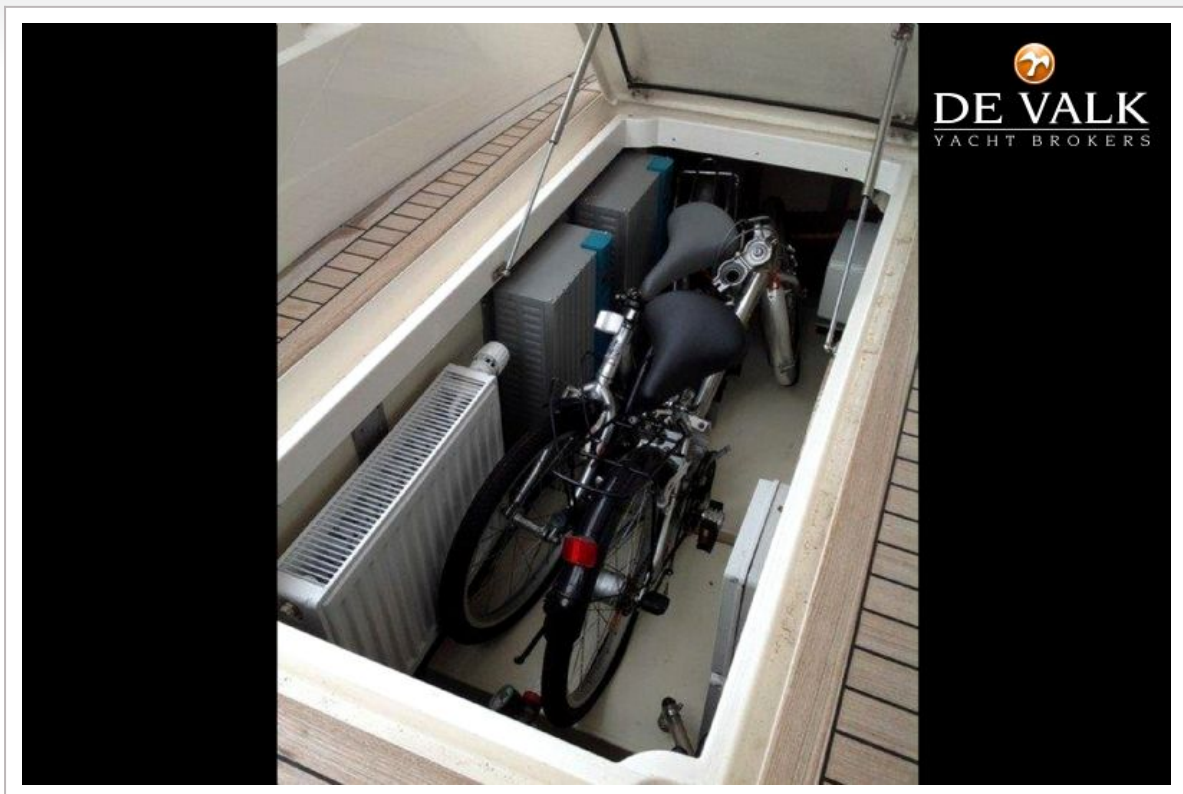
FAIRLINE SQUADRON 52



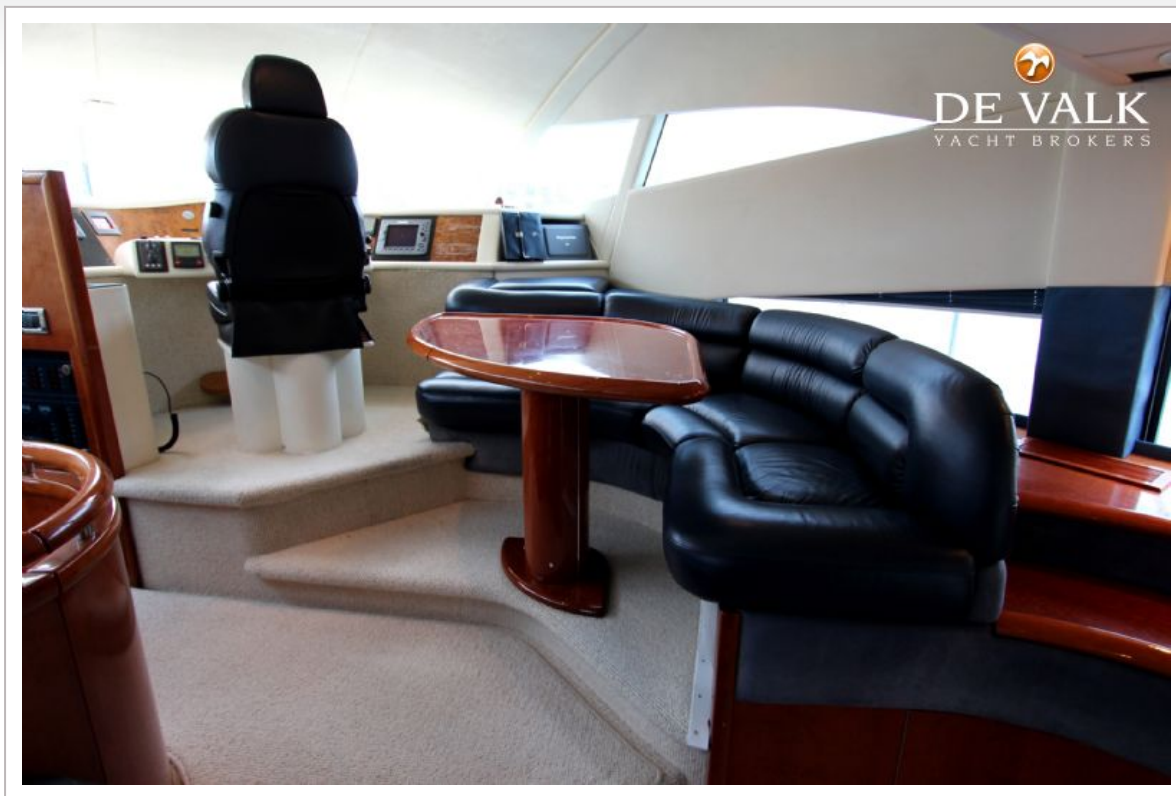


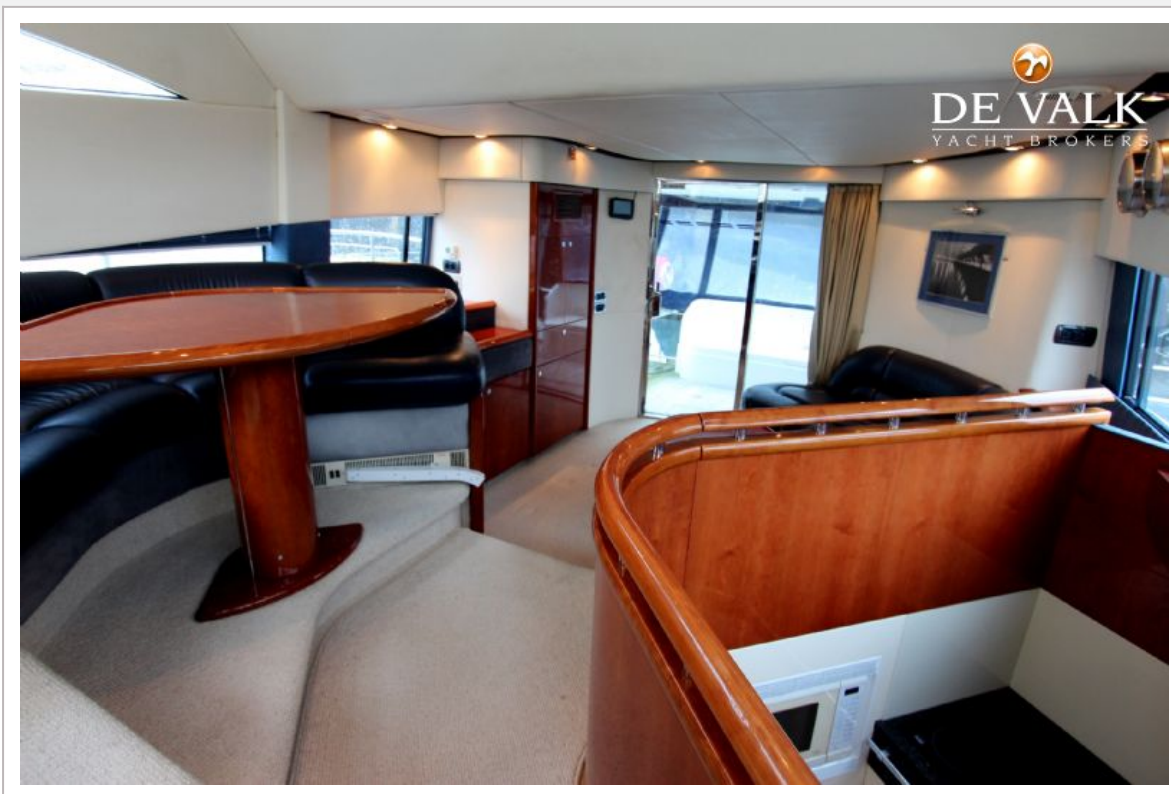


FAIRLINE SQUADRON 52



FAIRLINE SQUADRON 52

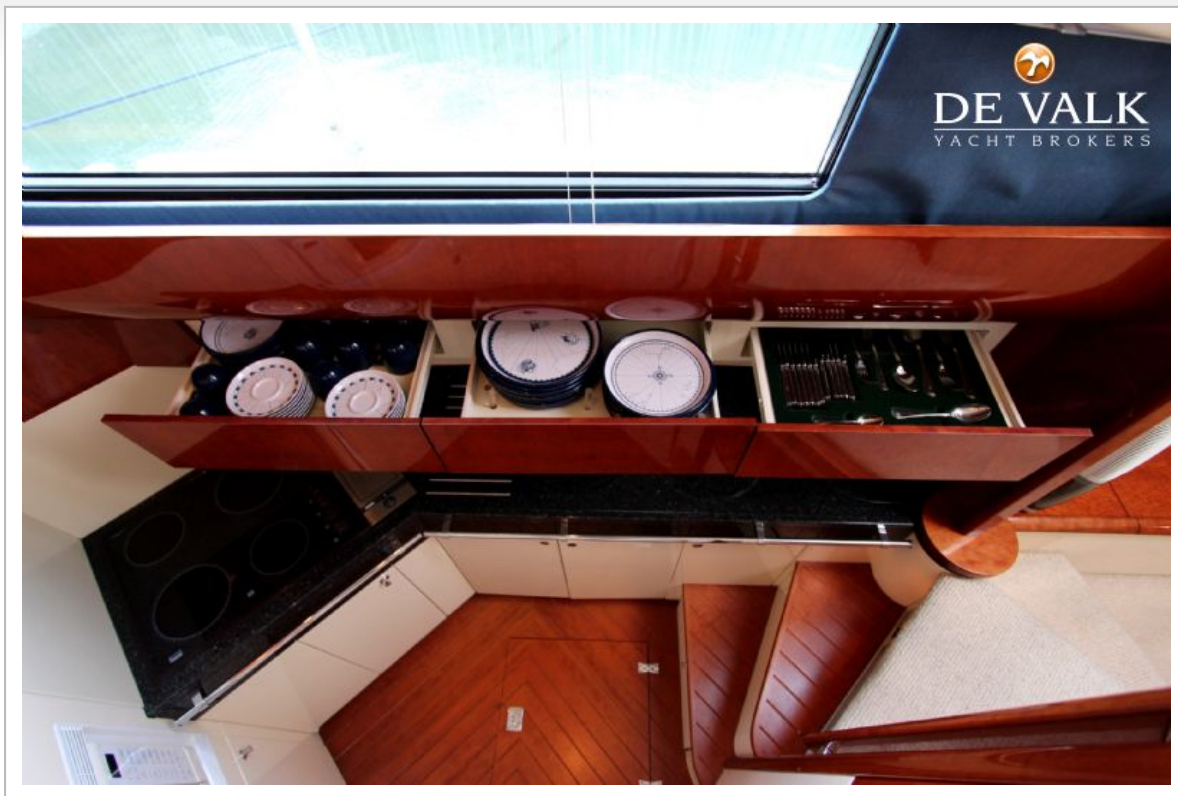




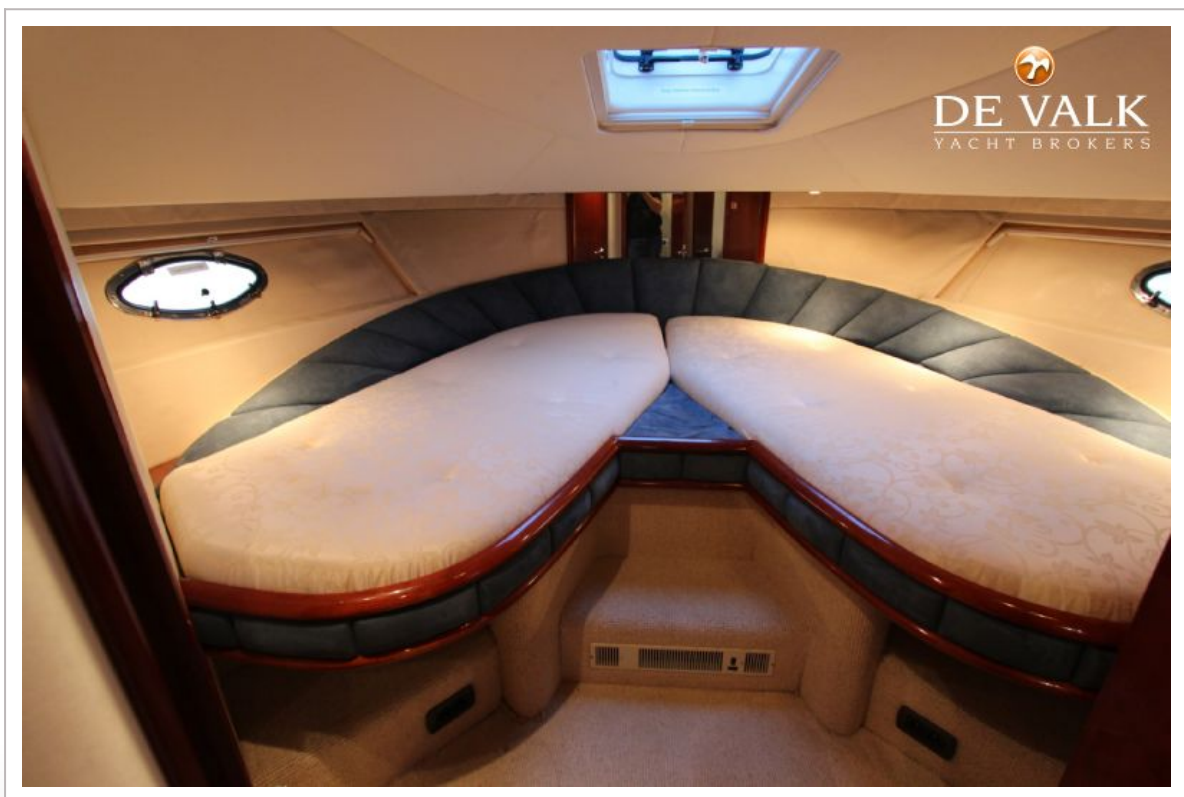
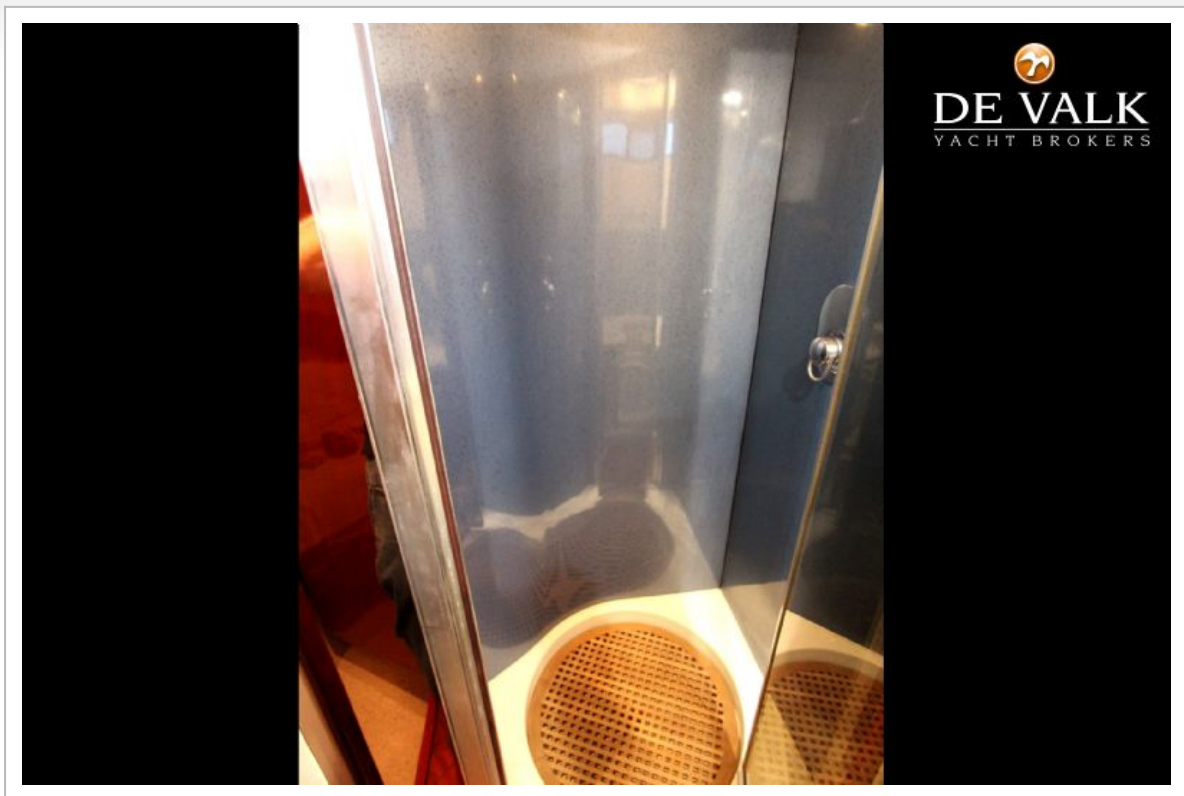
FAIRLINE SQUADRON 52



FAIRLINE SQUADRON 52







FAIRLINE SQUADRON 52



