



MOODY 64

BROKER'S COMMENTS

The Moody 64 is the flagship of the Moody fleet. The Moody 64 has the dynamic capabilities necessary for the most serious blue water cruising owner. The Moody 64 Spindrift has the accommodation for 8 including 1 crew. Spindrift has fully powered sail handling and has constantly been upgraded since new. The upgrades include sails, navigation equipment, new hull paint and also pumps and plumbing. If you are looking at a Moody 64, Spindrift is a must see on your list. Immaculate condition

Hans Visser

SPECIFICATIONS

Dimensions	19.35 x 5.33 x 1.98 (m)	Builder	Princess Yachts/ Moody UK
Built	2003	Cabins	4
Material	GRP	Berths	7
Engine(s)	1 x yanmar 4LHA-STP diesel	Hp/Kw	230.00 (hp), 169.05 (kw)
Asking price	sold (VAT)	Lying	contact Amsterdam

CONTACT

Sales office	De Valk Amsterdam B.V.	Telephone	+31 (0)35 5829014
Address	Peperstraat 7 1411 PX Naarden NL	E-mail	amsterdam@devalk.nl

DISCLAIMER

These particulars are given in good faith as supplied but cannot be guaranteed.



GENERAL

Model	MOODY 64
Type	sailing yacht
LOA (m)	19,35
LWL (m)	16,55
Beam (m)	5,33
Draft (m)	1,98
Air draft (m)	27,00
Headroom (m)	2,04
Year built	2003
Launched	Launched July 2004 after customisation @ Moodys itself
Builder	Princess Yachts/ Moody UK
Country	Great Britain
Designer	Bill Dixon
Displacement (t)	31,5
Ballast (tonnes)	10
Gross tonnage	28,7
CE norm	A
Hull material	GRP
Hull colour	blue Repainted in 2017
Hull shape	round-bilged
Keel type	bulb keel
Superstructure material	GRP
Rubbing strake	Teak
Deck material	GRP
Deck finish	teak
Superstructure deck finish	non-skid moulded in
Cockpit deck finish	teak
Antifouling (year)	Annually, spring 2019 for the last time
Dorades	8 x stainless steel
Window frame	Stainless steel



Window material	tempered glass
Deckhatch	yes
Portholes	aluminium
Fuel tank (litre)	stainless steel 3000 l.
Level indicator (fuel tank)	yes
Freshwater tank (litre)	stainless steel 600 l.
Blackwater tank (litre)	250
Blackwater tank extraction	deck extraction + uw line
Wheel steering	Double Rod steering
Emergency tiller	yes

ACCOMMODATION

Cabins	4
Berths	7
Crew cabin	1
Crew berths	1
Interior	teak Classic
Layout	Owner with crew
Floor	teak
Open cockpit	yes
Aft deck	yes
Saloon	Leather upholstery replaced 2015
Headroom saloon (m)	2,0
Heating	central heating Eberspacher DW10 including 3 towel rails
Air-conditioning	reverse cycle airco Cruise air
Navigation center	yes
Chart table	yes
Aft Cabin	yes
Dinette	yes
Sliding door to cockpit	yes
Galley	U shaped



Countertop	corian
Sink	stainless steel Double
Cooker	electric Force ten with ceramic hob and integrated oven (2016)
Oven	yes
Microwave	yes
Fridge	yes
Freezer	yes
Wine cooler	yes
Hot water system	220V + engine
Water pressure system	
Dishwasher	Bosch SKT5002 4 plate setting
Ice maker	Raritan
Crockery	yes
Owners cabin	French bed
Bed length (m)	2.00 x 1.70
Wardrobe	hanging/drawers/shelves
Bathroom	en suite
Toilet	en suite
Toilet system	vacuum
Wash basin	in the bathroom
Shower	en suite
Extra info	Fitted carpets replaced 2018
Guest cabin 1	double bed VIP cabin
Bed length (m)	2.00 x 1.40
Wardrobe	hanging/drawers/shelves
Bathroom	en suite
Toilet	en suite
Toilet system	vacuum
Wash basin	in the bathroom
Shower	en suite
Guest cabin 2	bunk bed
Bed length (m)	2.00



Wardrobe	hanging/drawers/shelves With mirror
Bathroom	shared
Toilet	shared
Toilet system	vacuum
Wash basin	in the bathroom
Shower	shared
Guest cabin 3	bunk bed Passage cabin
Bed length (m)	2.00
Wardrobe	shelves
Crew cabin(s)	1
Bathroom (crew)	yes
Toilet (crew)	yes
Toilet system	vacuum
Wash basin	at the toilet
Washing machine/dryer combi	Miele full size

MACHINERY

No of engines	1
Make	Yanmar
Type	4LHA-STP
HP	230,00
kW	169,05
Fuel	diesel
Year installed	2003
Year of overhaul	2011
Maximum speed (kn)	9,9 @ 2700 rpm
Cruising speed (kn)	8,5 @ 2000 rpm
Engine hours	6245
Drive	shaft
Shaft seal	yes
Engine controls	electrical



Gearbox	hydraulic
Bowthruster	hydraulic Side Power 15 Hp.
Exhaust	watercooled
Propeller type	folding Brutons Varifold (2018)
Propeller blades	4
Propeller shaft material	stainless steel
Shaft lubrication	water
Manual bilge pump	yes
Electric bilge pump	yes
Bilge alarm	yes
Electrical installation	12 & 24 V. DC & 240 V AC
Generator	wet exhaust Fischer Panda 12 kW 240 V AC new 2011
Running hours generator	1755
Generator 2	Fischer Panda 6 KW 24 V DC new 2013
Running hours generator 2	1945
Batteries	Sonnenschein Exide Gel batteries July 2012
Start battery	New 2018
Service battery	New 2018
Generator battery	New 2018
Battery monitor	BMV 501 as part of Victron intelligent power system
Battery charger/inverter	Victron Quattro 24/8000 2011,integrated power management system
Diode battery combiners	yes
Shorepower	with cable
Watermaker	Spectra Newport 1000

NAVIGATION

Compass	2 x Whitlock
Depth sounder	Raymarine I70
Log	Raymarine I70
Windset	Raymarine I70



Repeater	4 x Raymarine I70 MFD at helm & companionway & 290 at chart table
VHF	Raymarine with 3 stations (Cockpit, Helm & Companion way)
Autopilot	Raymarine R70 Autopilot with 3 controls, helm, companionway, nav
Rudder angle indicator	yes
Radar	Raymarine
GPS	2 x furuno GP32 Waas with switchover switch
Radar/GPS/plotter	Raymarine C series 12" & A series 9"
Weather receiver	Meteoman (obsolete)
Personal computer	With Samsung flatscreen
PC connection	Sony Viao VGX media centre
Wifi antenna	Yachtspot 4G/WiFi receiver with external antenna
AIS transponder	yes
Radio receiver	Thrane and Thrane Fleet Broadband System
Transmitter	Icom IC 802 SSB radio
EPIRB	yes
Extra info	Iridium Sat phone system

EQUIPMENT

Fixed windscreen	yes
Sprayhood with grab rail	Blue
Bimini	Blue
Cockpit cushions	yes
Cockpit table	yes
Bathing platform	Electric hydraulic remote controled
Boarding ladder	stainless steel also used to fit to platform
Transom door	yes
Gangway	Carbon electric hydraulic
Anchor	
Anchor chain	100 meter Stainless steel
Anchor 2	Spare Danforth folding in Lazarette



Chain counter	Quick
Windlass	electrical Lewmar 3000
Dinghy	rigid hull Ribeye 3.65 meter
Outboard	Yamaha 15 hp
Davits	White painted kevlar
Davits controls	electrical
Grab rail (superstructure)	
Railing side opening gates	yes
Pushpit	yes
Pulpit	yes
Life raft	container RDF solas (A'Pack) new 2016
Life raft (pers)	8
Lifejackets	7 plus emergency grab bag
Lifebuoy	yes
Danbuoy	yes
Horn	electric
Fenders	yes
Mooring lines	yes
Spare parts	yes
Tools	yes
Alarm system	For bilges
TV	3 x
TracVision ball	KVH Track vision G6
Radio-cd player	yes
Surround Sound System	Bose sound systems both below and on deck
Cockpit speakers	yes
Speakers in salon	yes
Speakers in cabin	yes
Clock - barometer	yes
Fire extinguisher	yes
Extinguisher in engine room	yes
Auto extinguisher system	yes



RIGGING

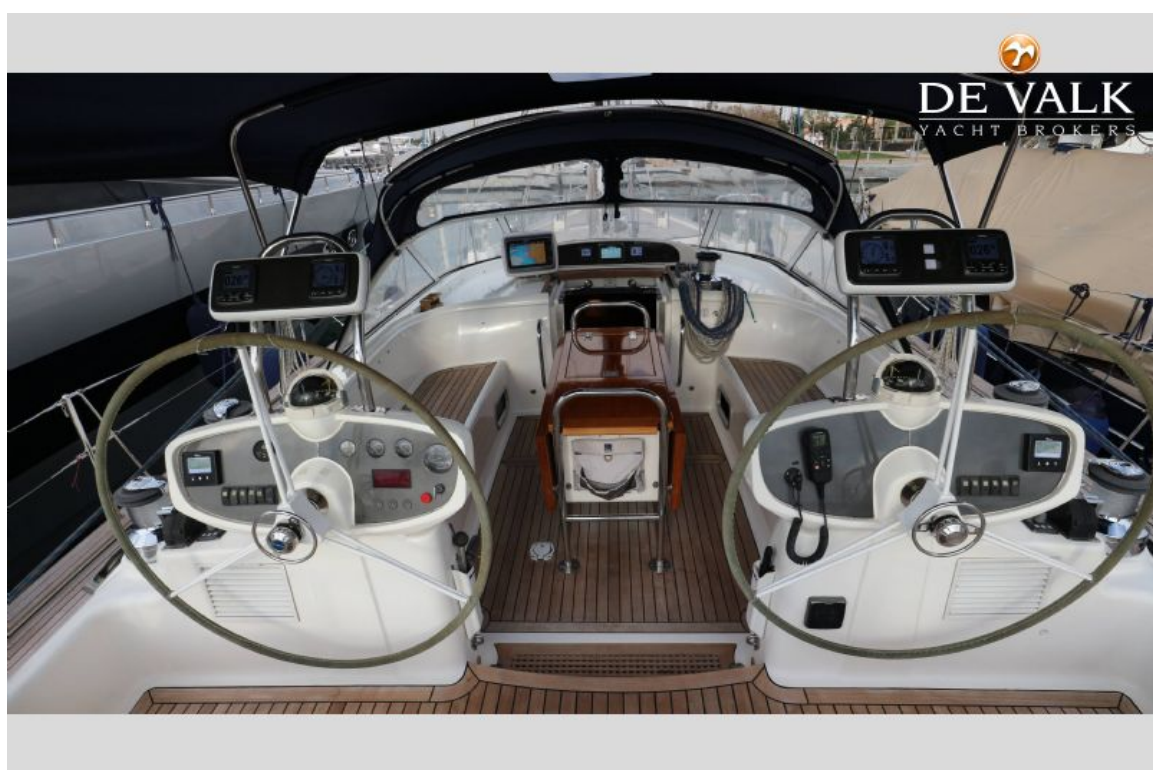
Rigging	sloop-cutter White, repainted 2018 incl boom
Standing rigging	Rod
Brand mast	Seldén
Material mast	aluminium
Spreaders	3 sets swept aft plus diamond jumper strut
Keel stepped mast	yes
Mainsail	Doyle Stratis 2015
Stoway mast	Selden hydraulic
Genoa	Furling Doyle Stratis 2015
Genoa furler	Selden hydraulic
Cutter furler	Selden hydraulic
Spinnaker	Parasail wiyh small bow sprit
A-symetric spi	Doyle 2011
Staysail	Doyle Stratis 2015
Backstay adjuster	hydraulic Navtec
Boomvang	hydraulic Navtec
Primary sheet winch	1 x Lewmar 58 CEST mainsheet & control line
Secondary sheet winch	2 x Lewmar 58 CST
Genoa sheetwinches	2 x Lewmar 66 CEST electric
Halyard winches	Lewmar on control line
Spinnaker winch	Lewmar on control line
Reefing winch	Lewmar 58 CST on the mast
Multifunctional winches	2 x Lewmar 30 CST traveller
Spi-pole	carbon
Isolated backstay	yes
Extra info	I 24 M, J 7,5 M, P 21,5 M,E 7,15 M.
Extra info	Standing rigging fully inspected januari 2018 report available



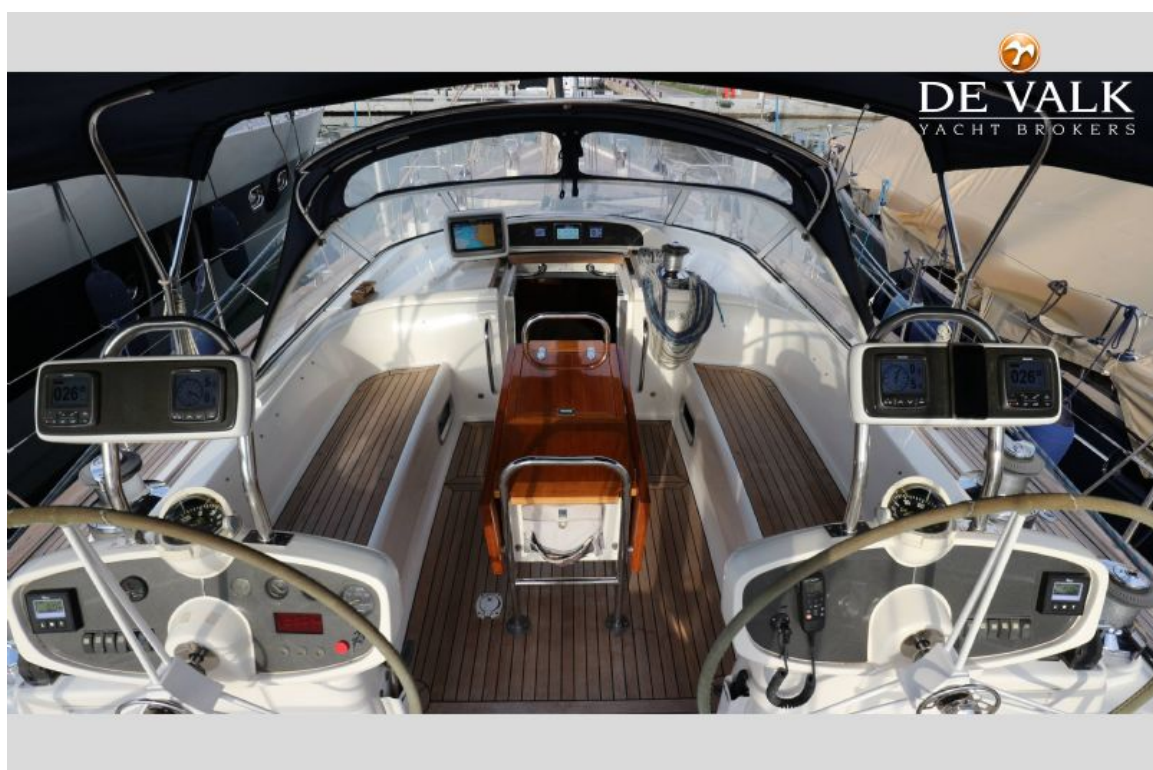
MOODY 64



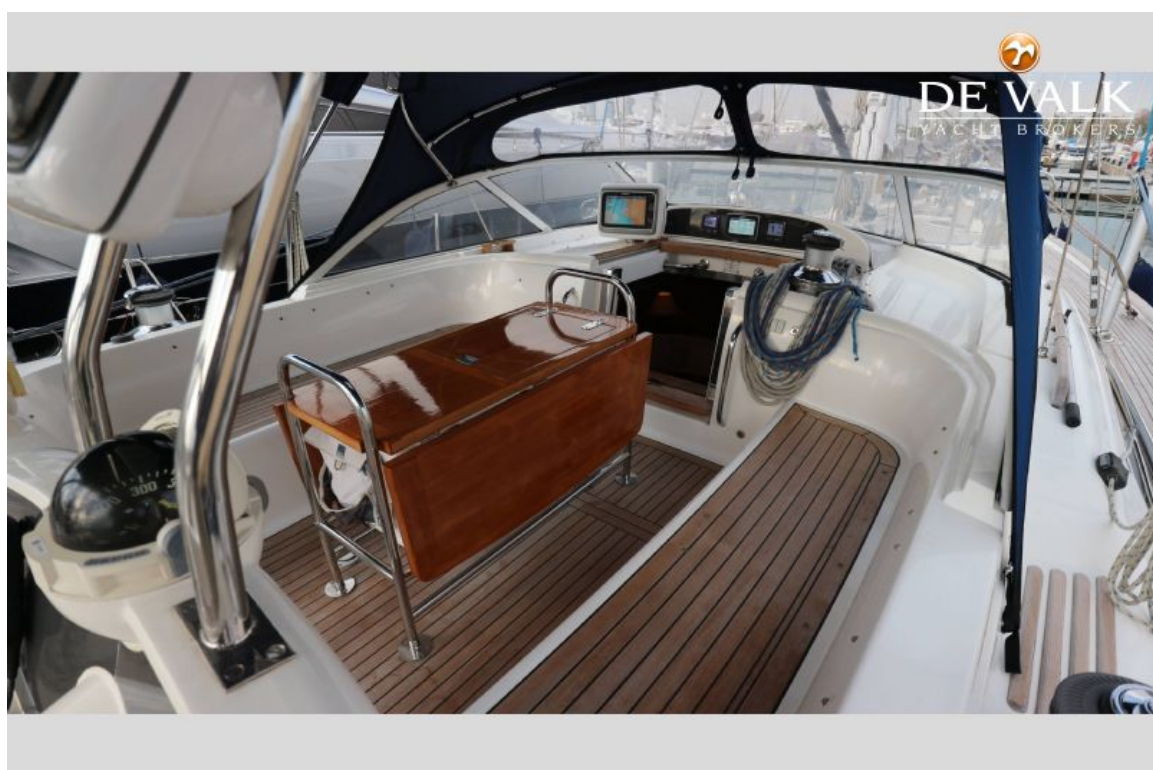
MOODY 64



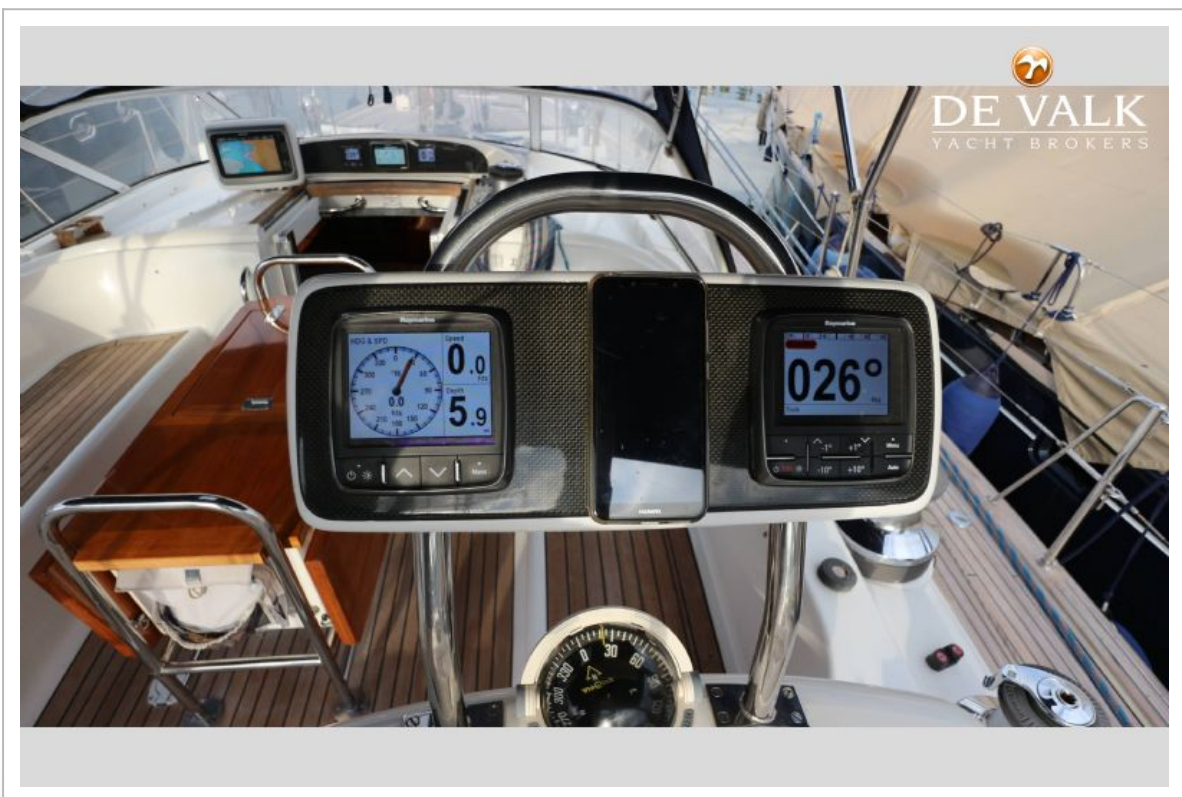
MOODY 64



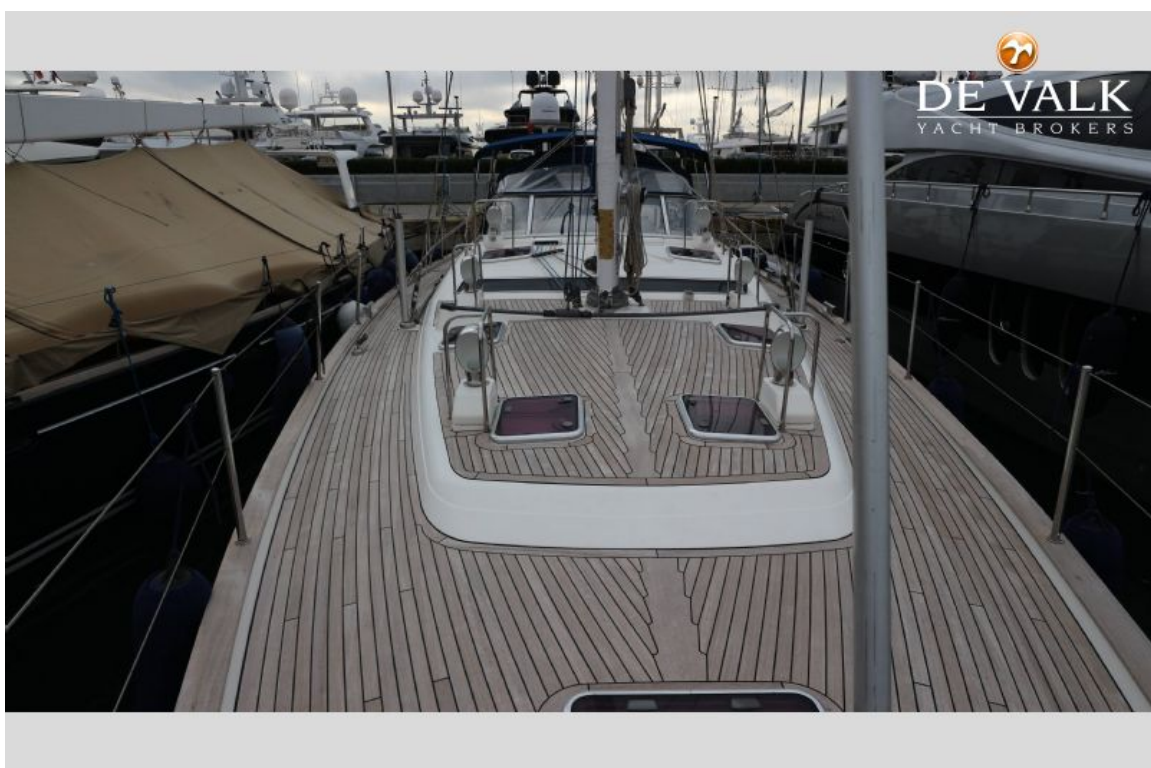
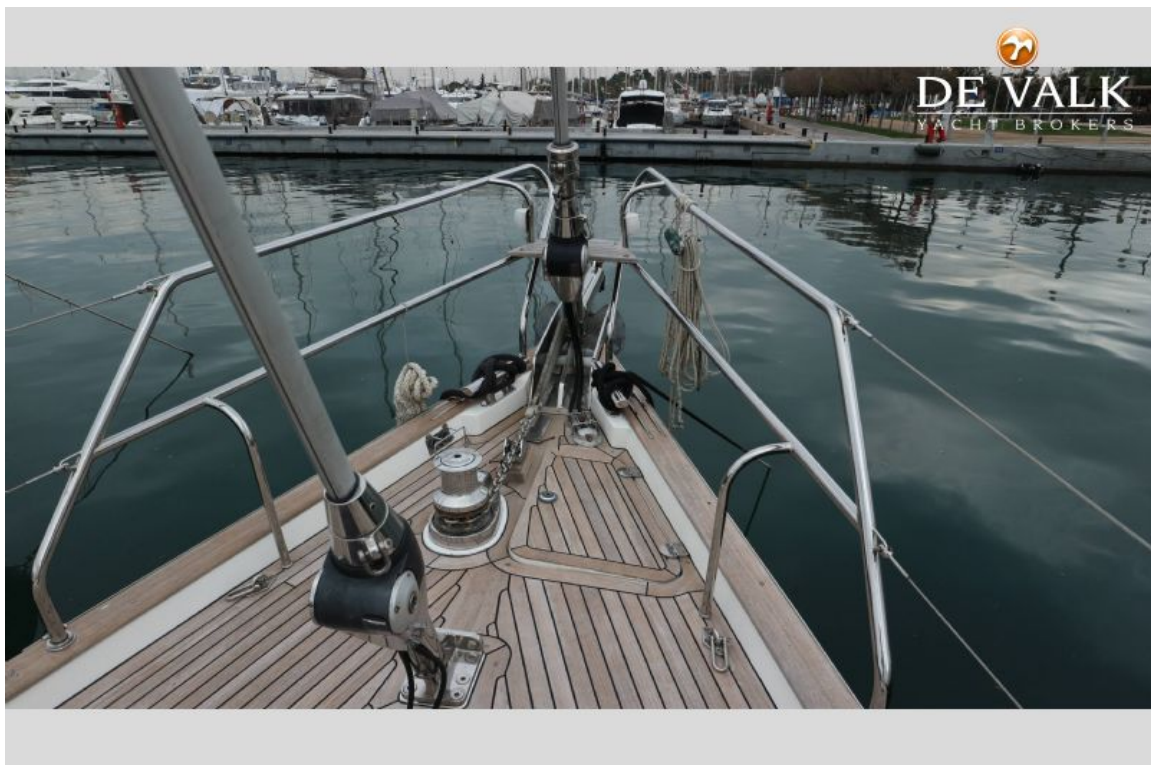
MOODY 64



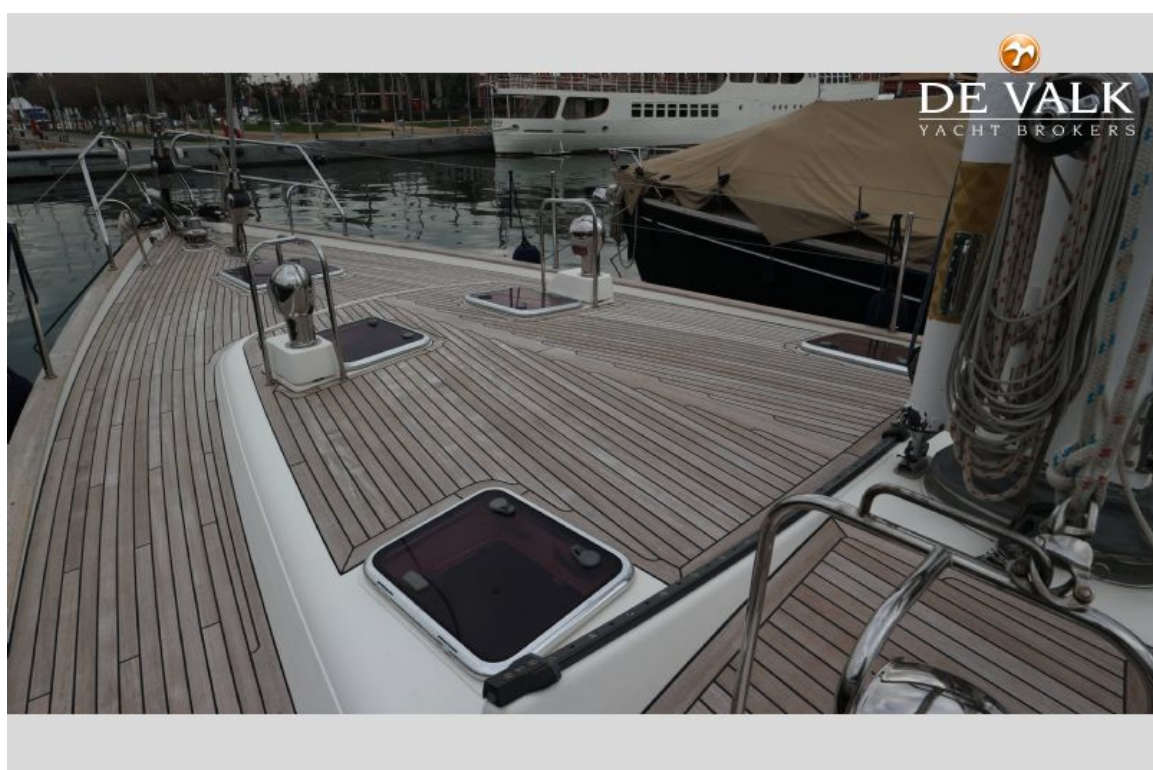
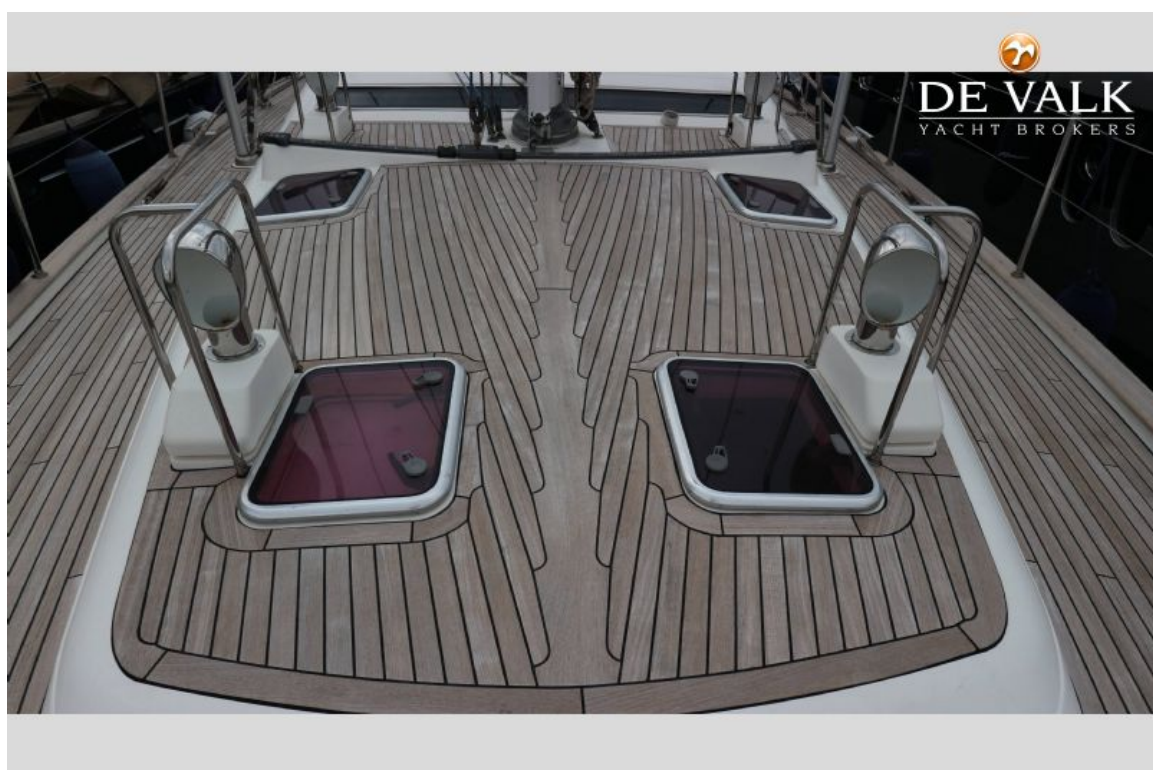
MOODY 64



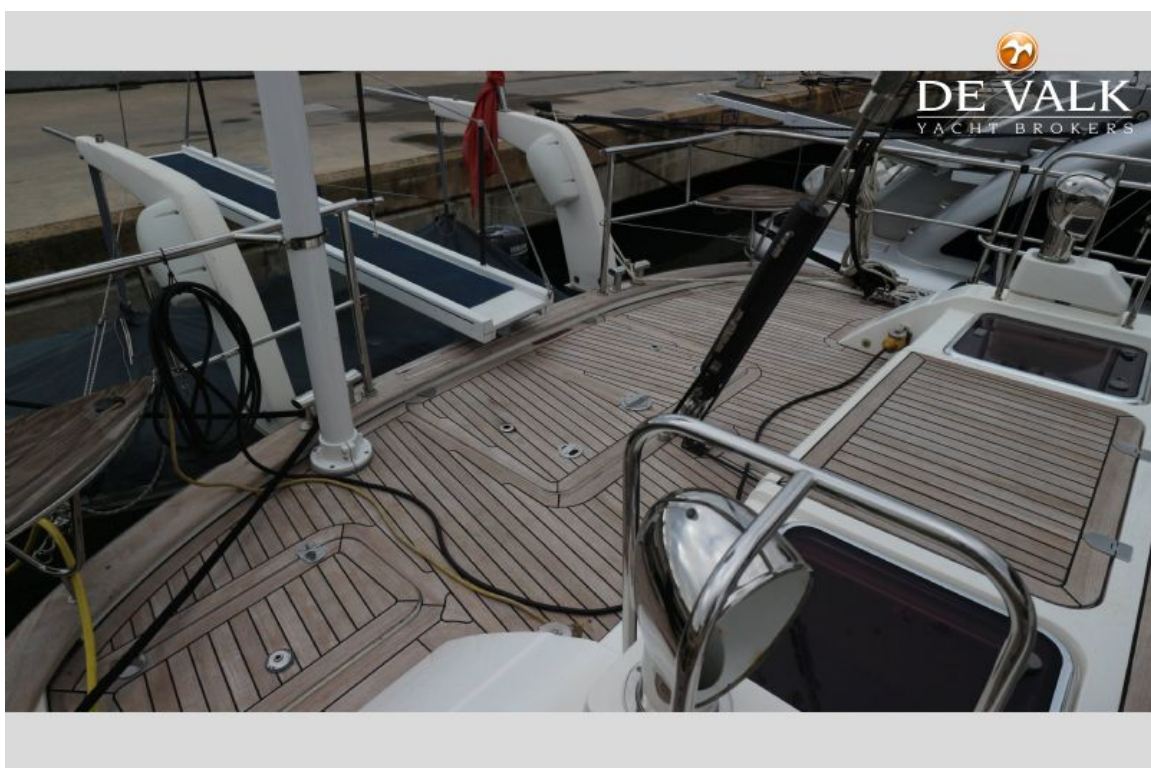
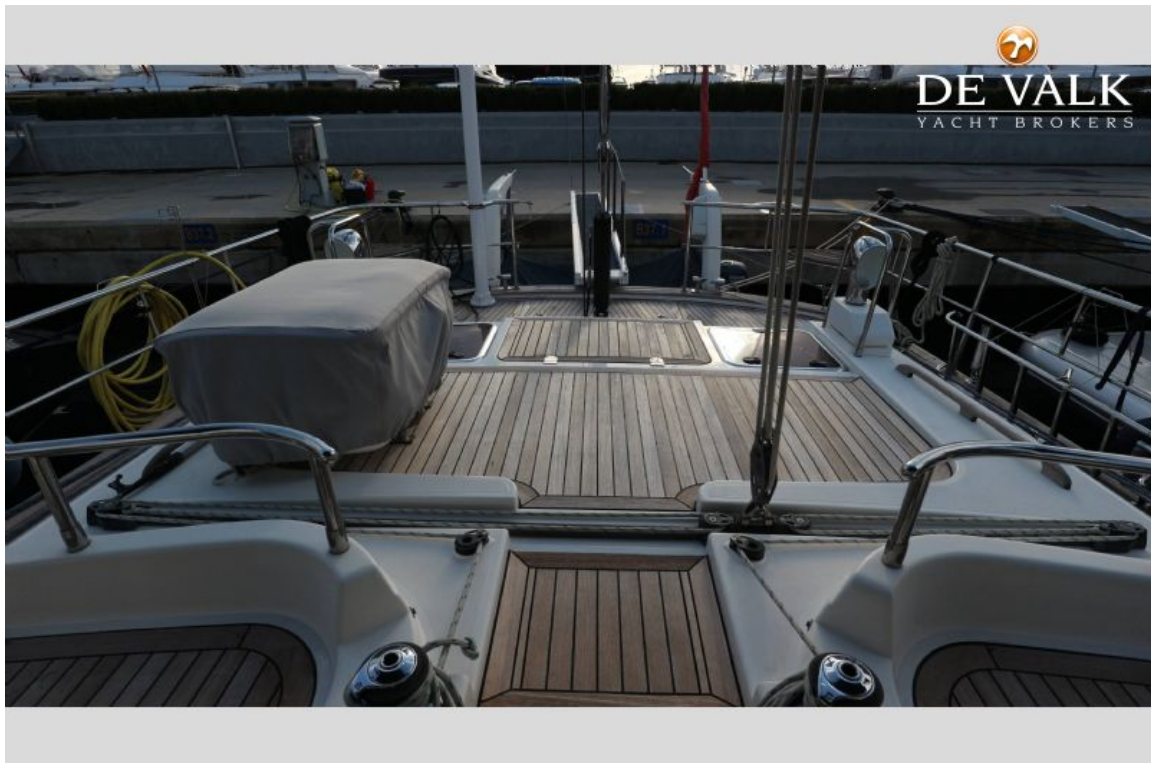
MOODY 64



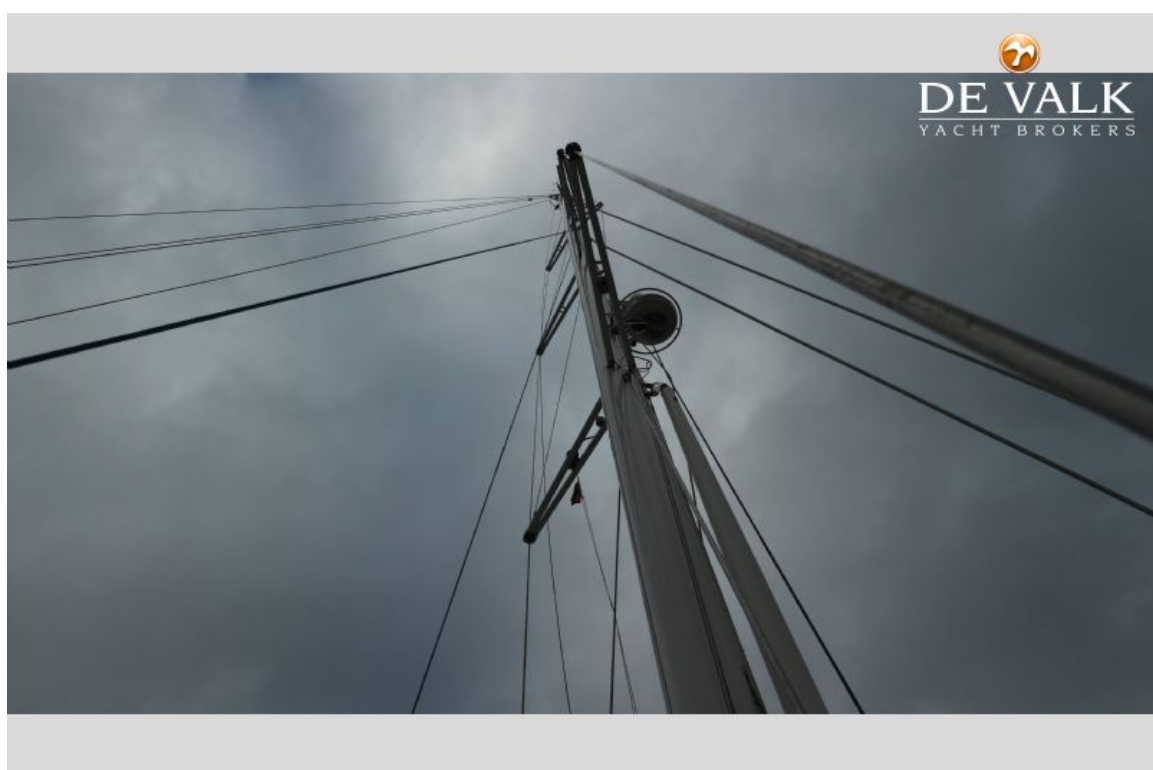
MOODY 64



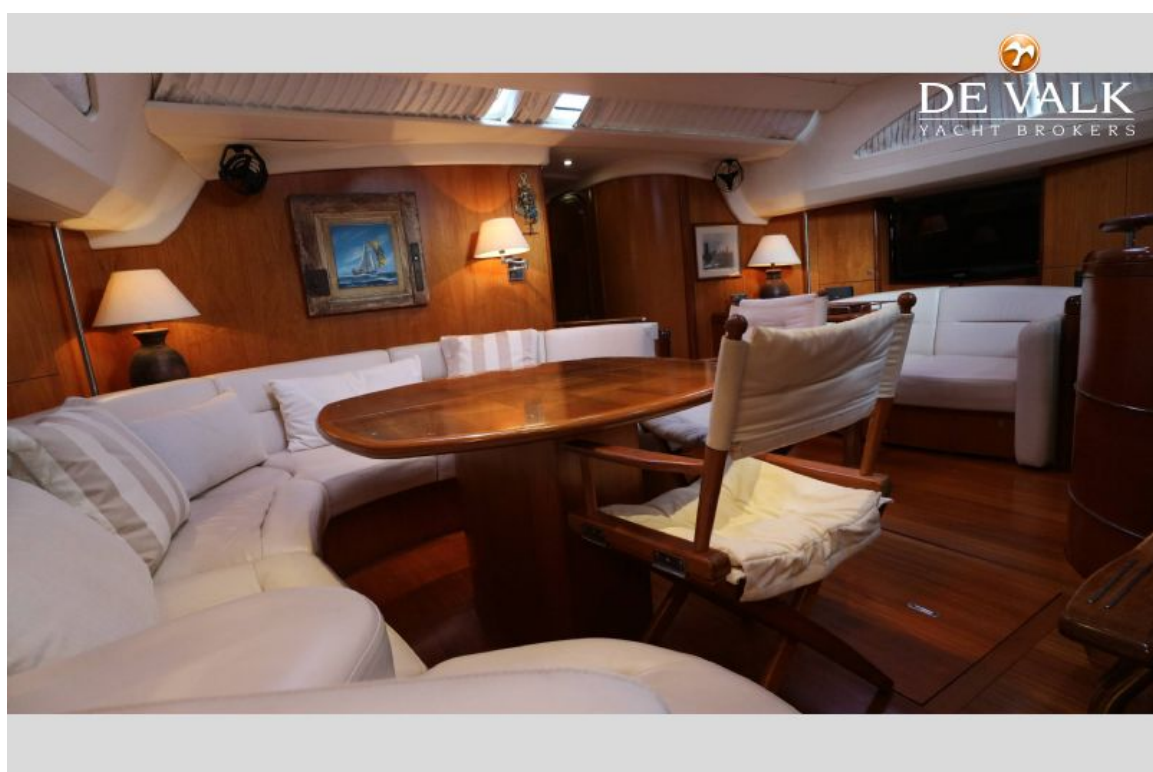
MOODY 64



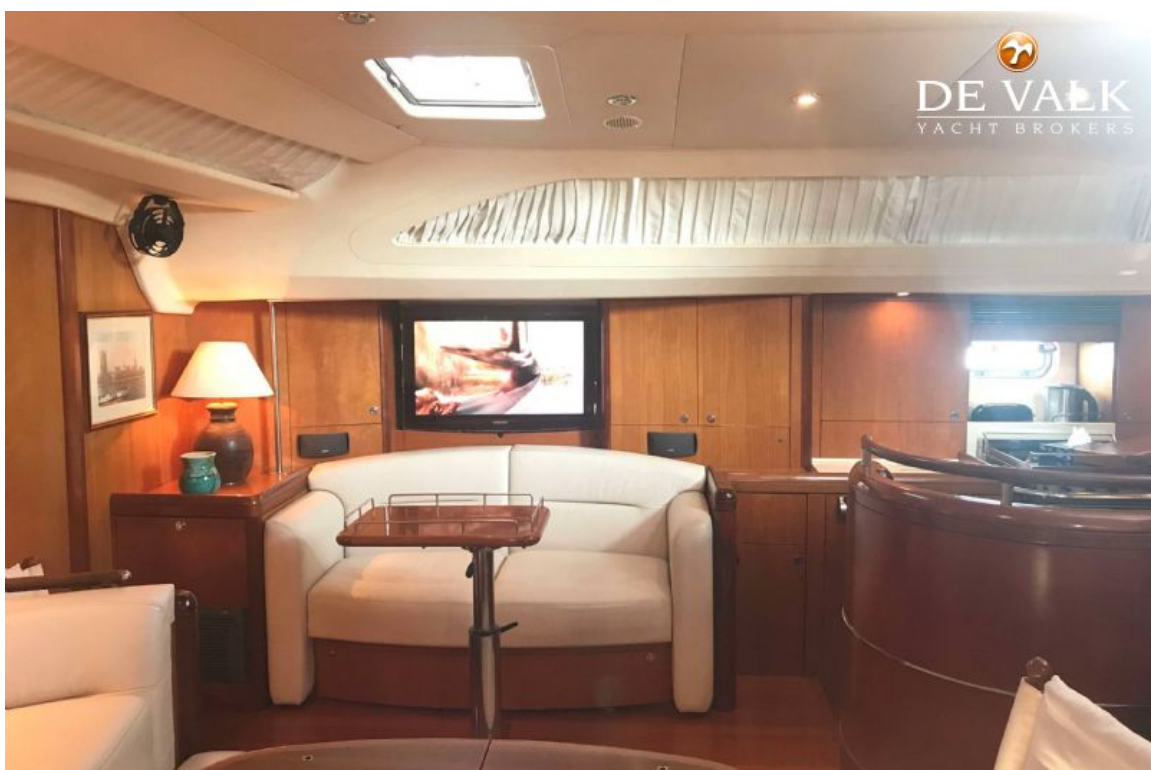
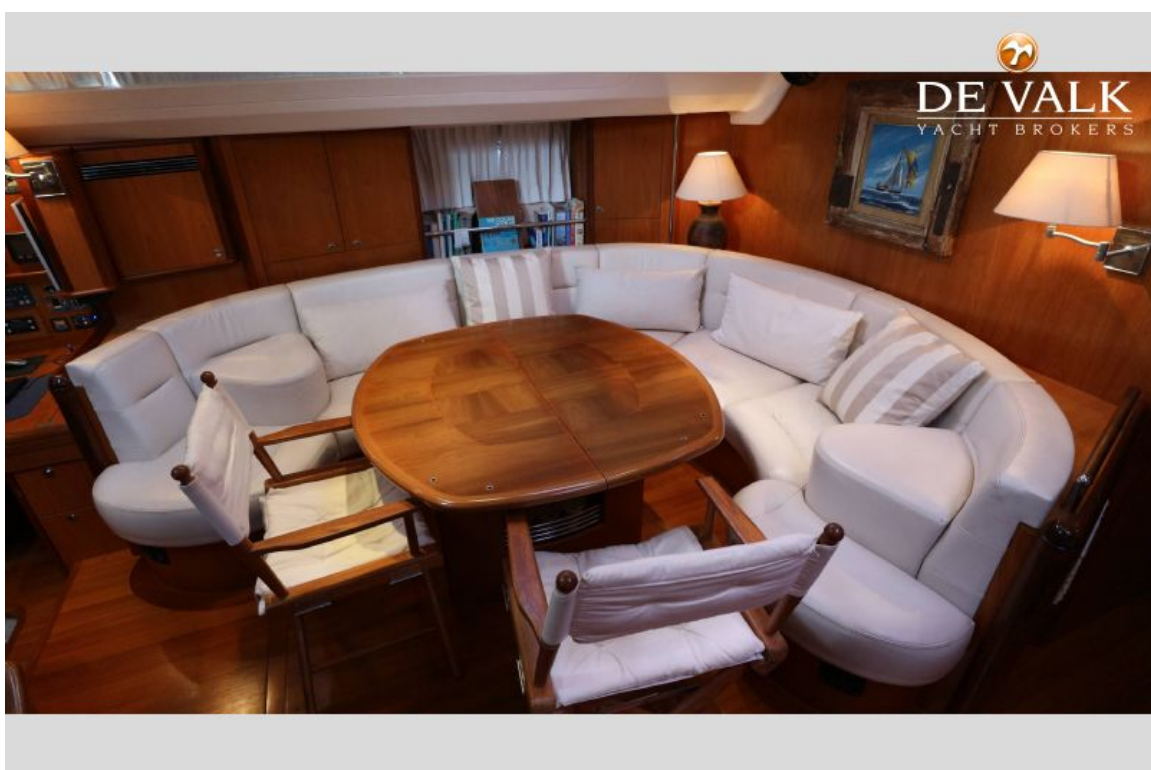
MOODY 64



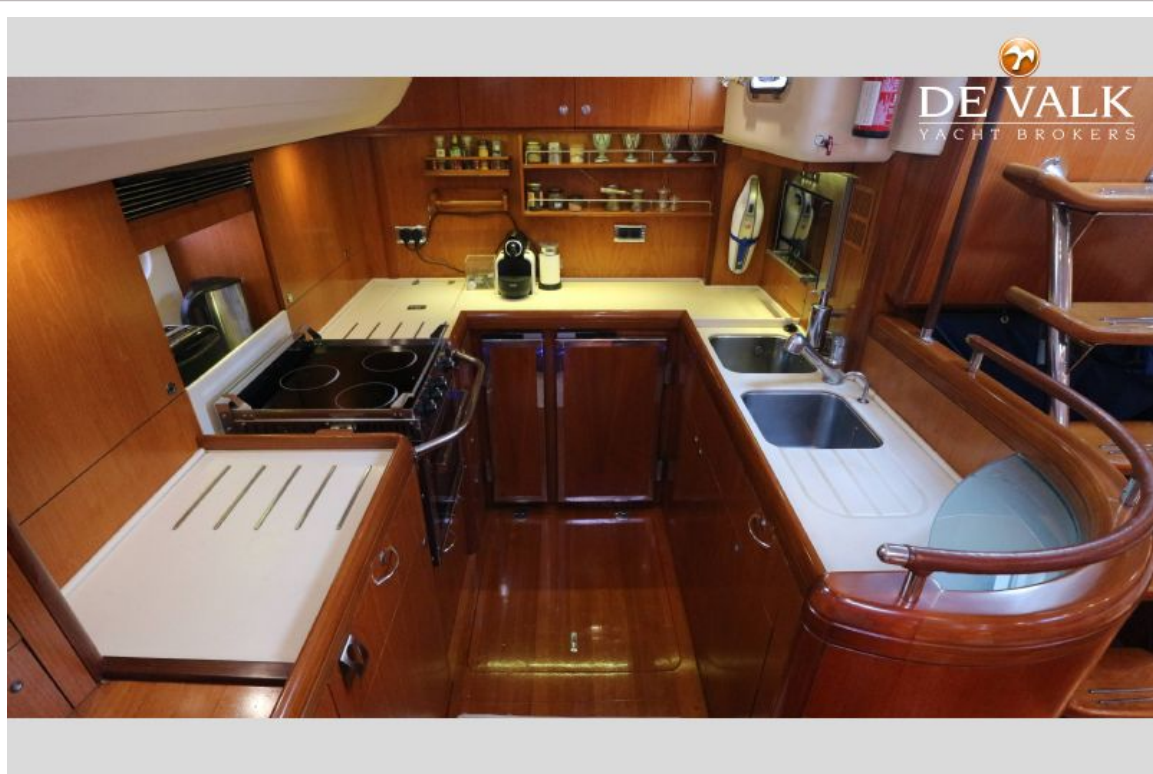
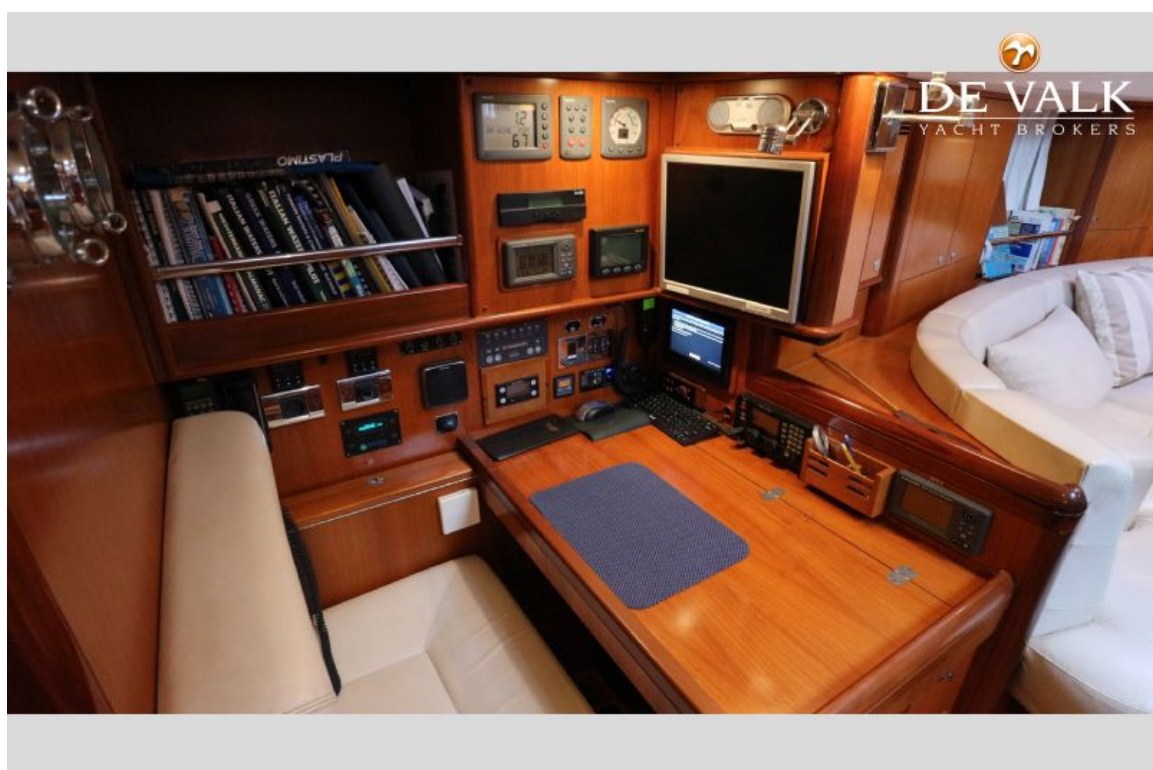
MOODY 64



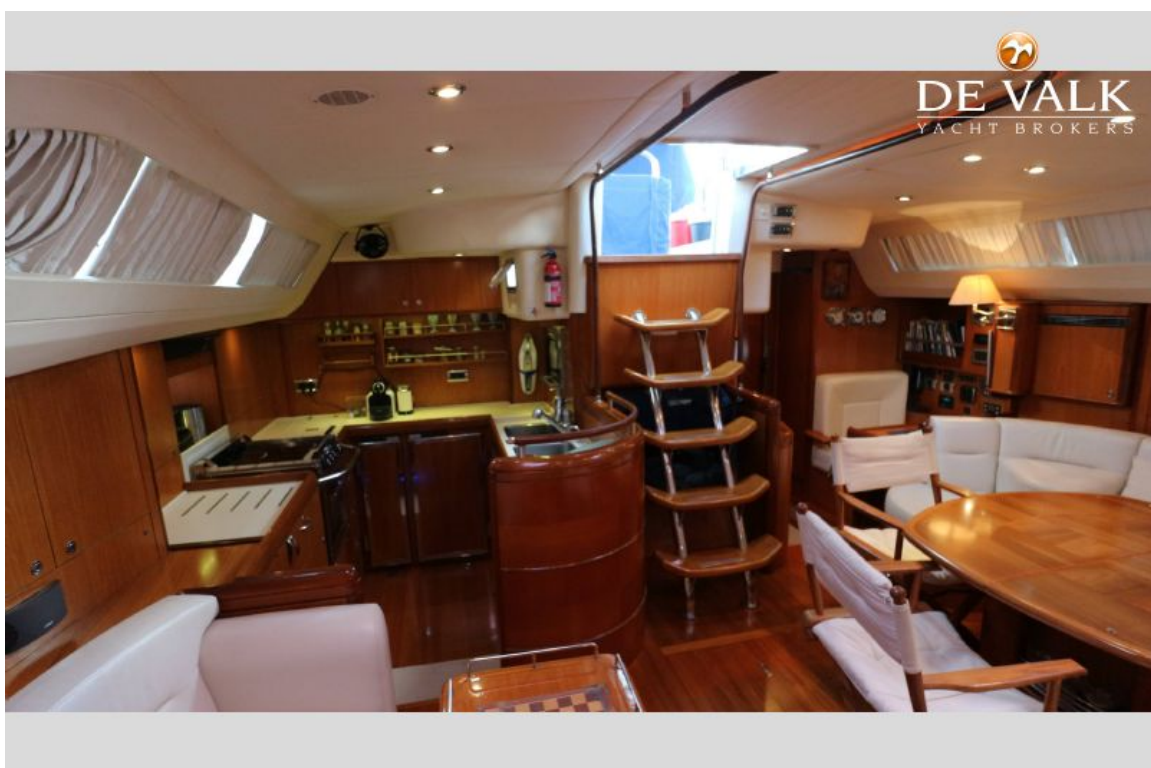
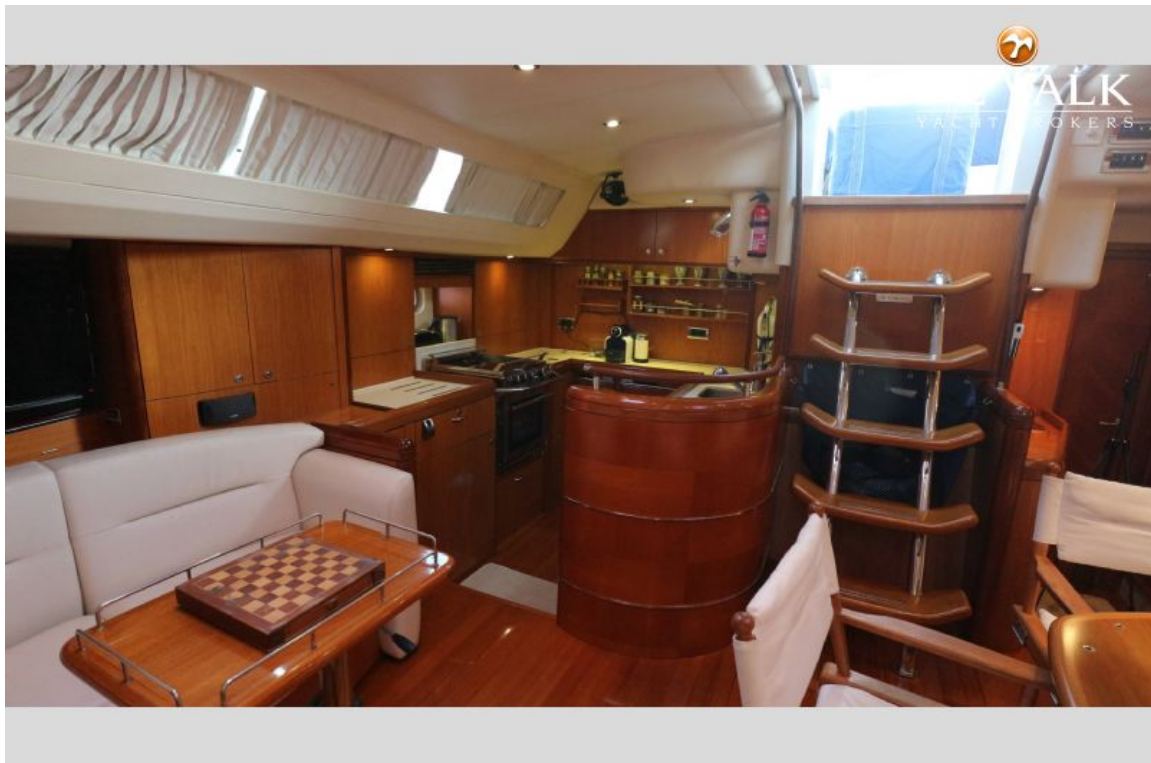
MOODY 64



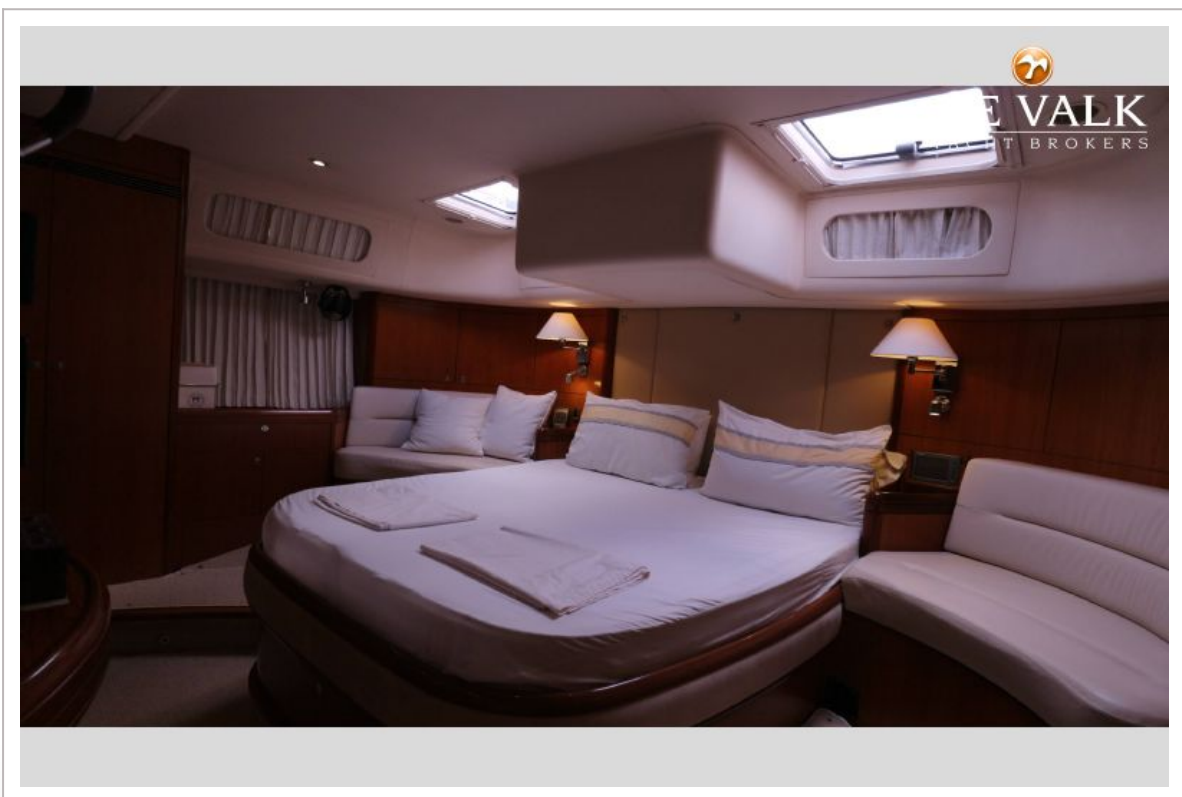
MOODY 64



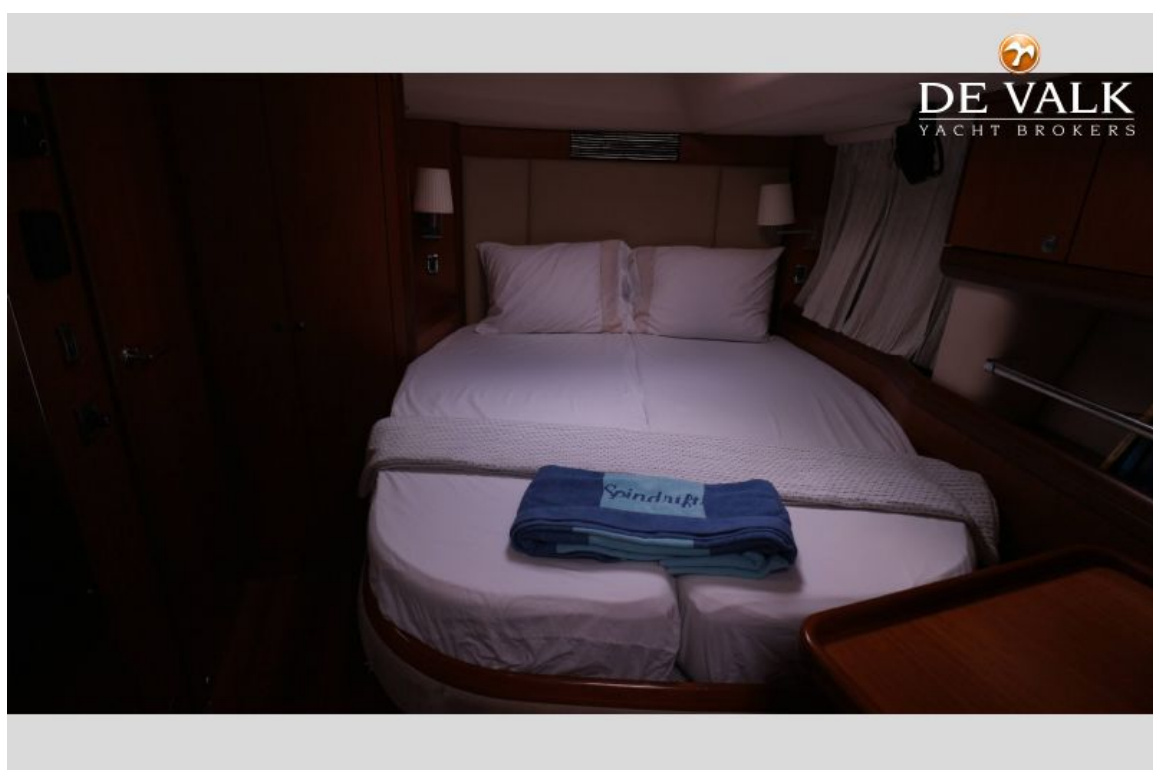
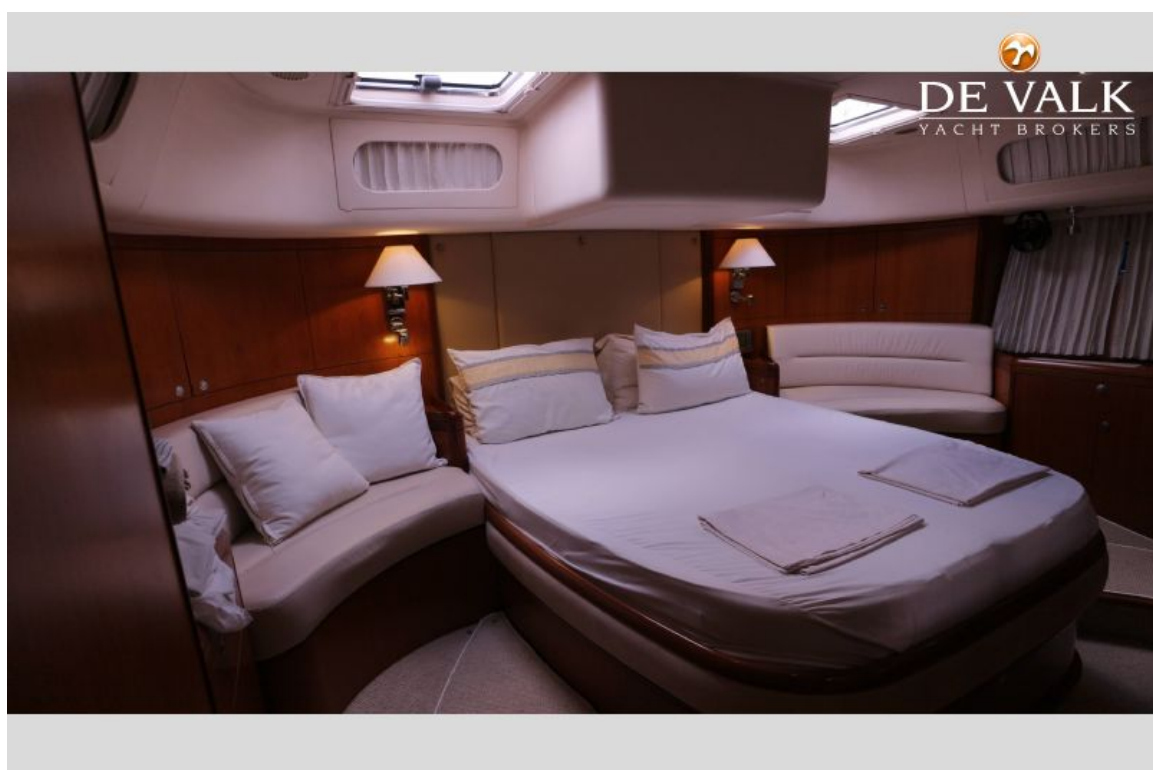
MOODY 64



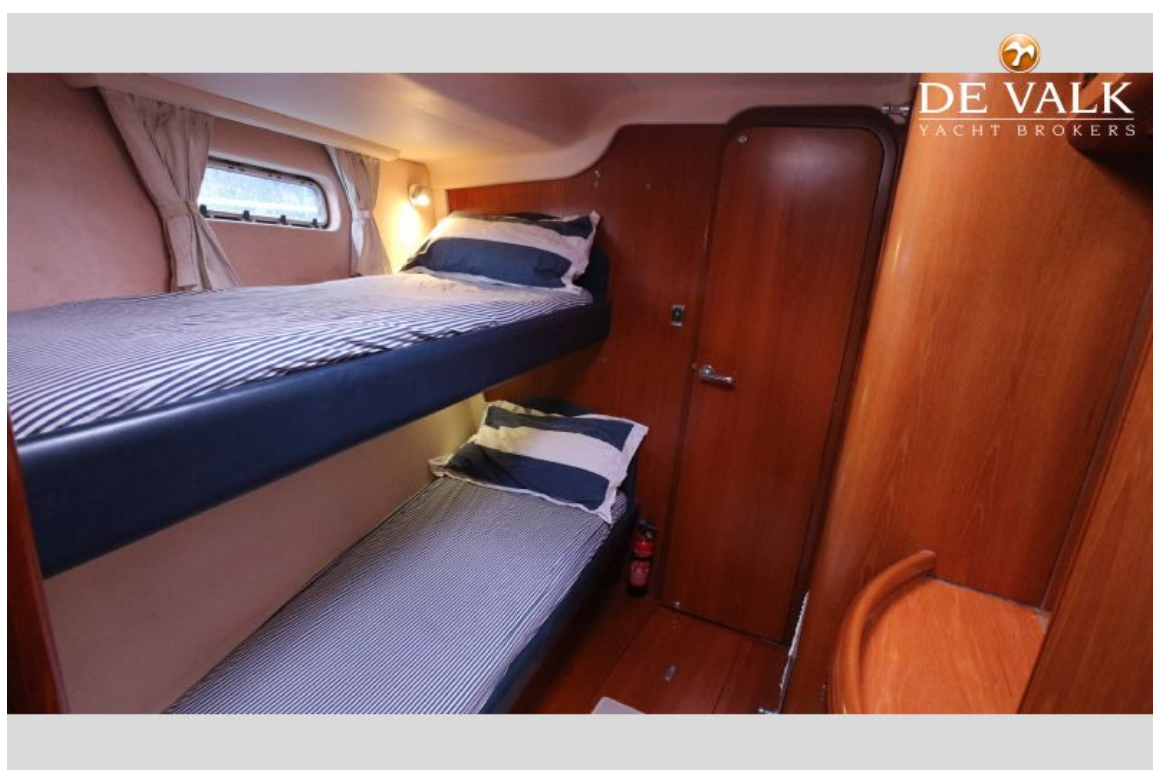
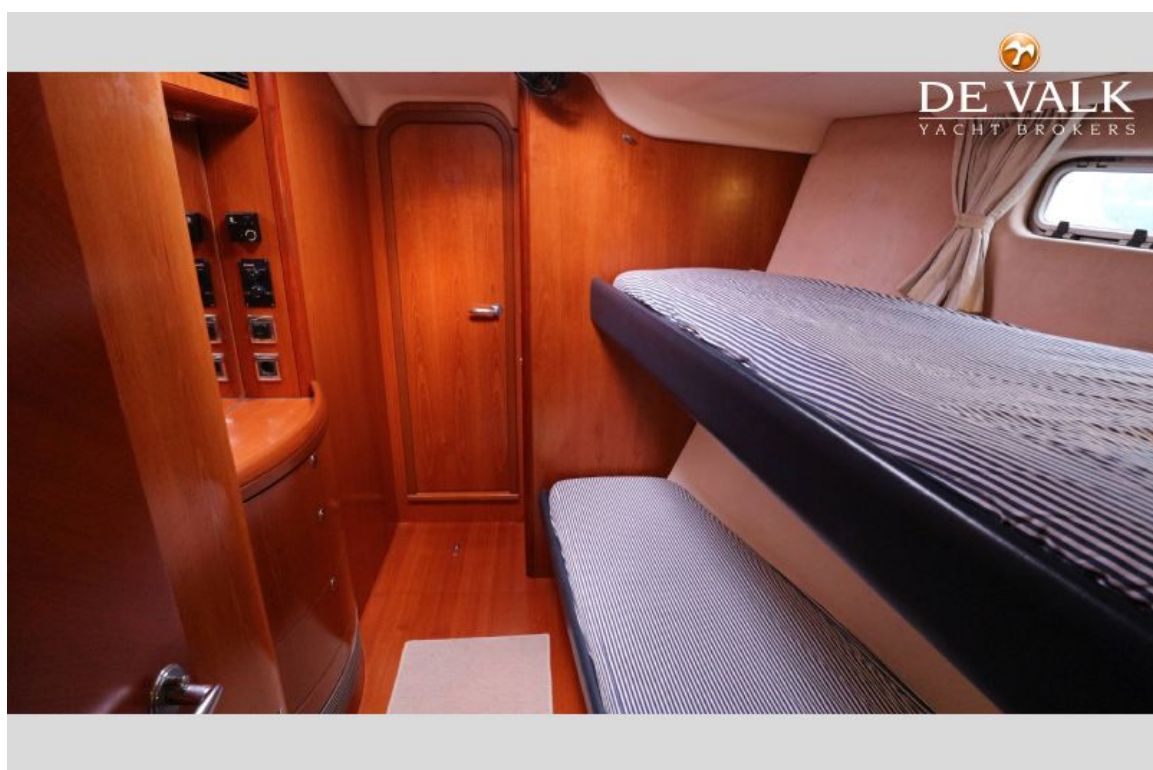
MOODY 64



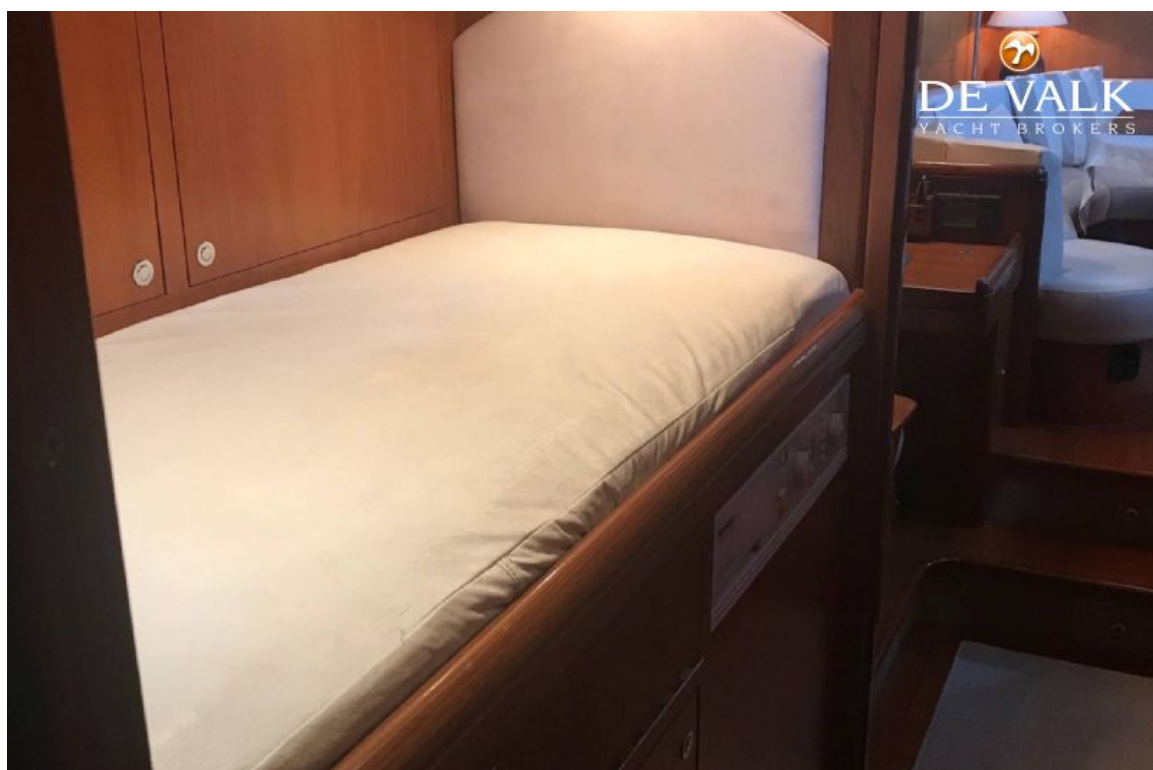
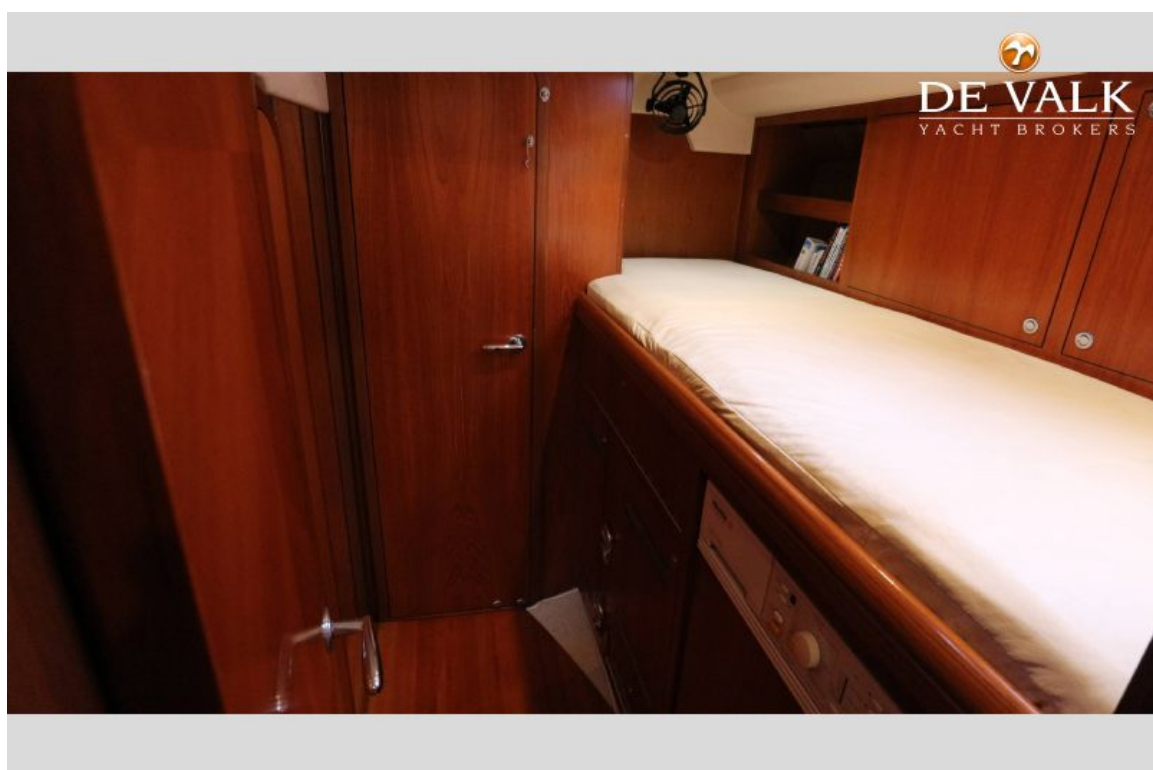
MOODY 64

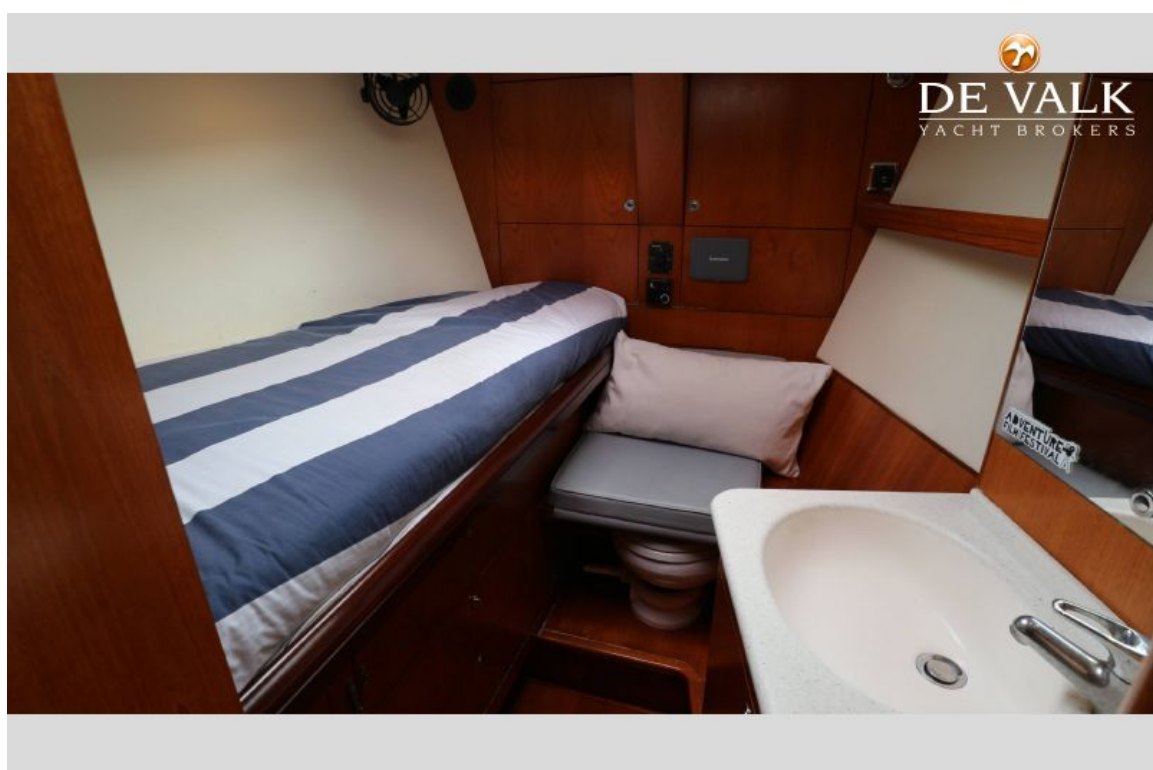
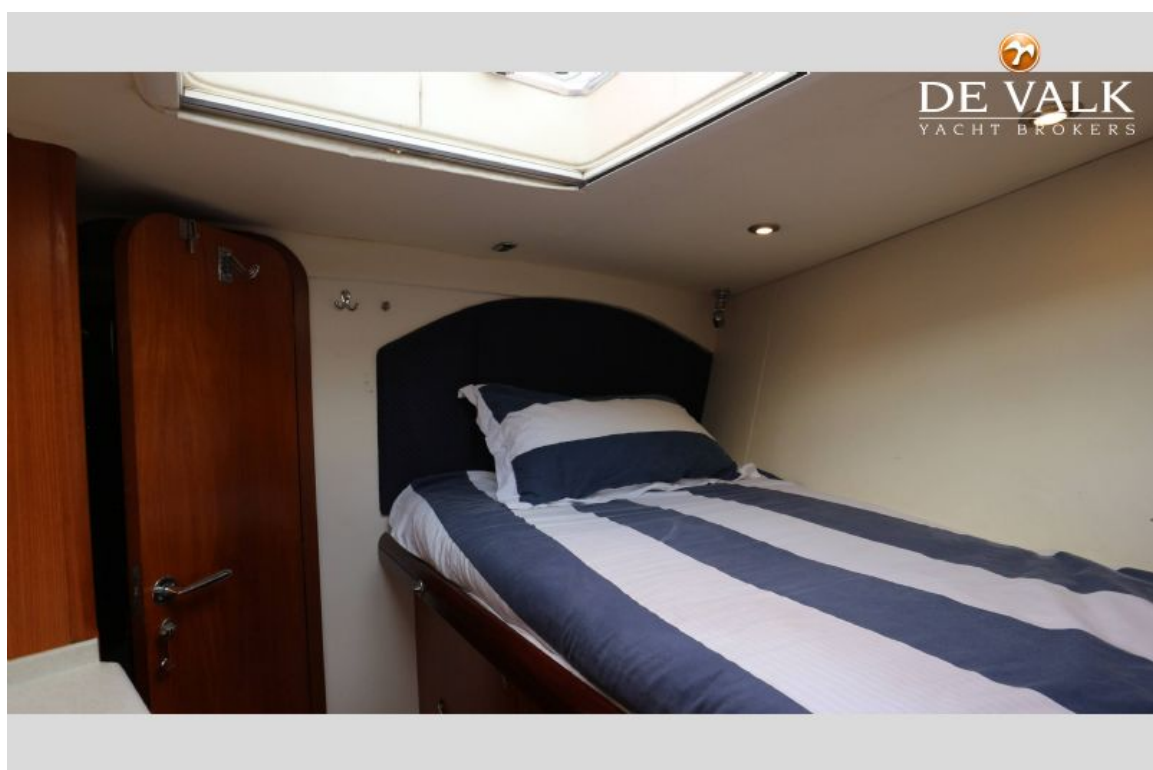


MOODY 64



MOODY 64





MOODY 64

