



DE VALK  
YACHT BROKERS



STANDFAST 66



DE VALK  
YACHT BROKERS

BROKERAGE | CHARTER | BERTHS | FINANCE | INSURANCE | YACHT MANAGEMENT

# STANDFAST 66

## BROKER'S COMMENTS

Always dreamed of a “go anywhere in the world” yacht with sail handling almost like a day sailor? This Standfast 66 is a top quality robust built performance cruiser, with safe and exceptional sea behaviour. Designed by Ed Dubois and built in The Netherlands by the famous Standfast Boat Yard, known for incredible craftsmanship and attention to detail. She offers great comfort in- and outside with accommodation for up to 10 people, but is also easy to handle by just a couple. Massive refit in 2011, fully equipped and kept to the highest standard of maintenance. <https://www.standfast66.com/>

*Willem Koopmans*

## SPECIFICATIONS

<b>Dimensions</b>	20.47 x 5.32 x 2.68 (m)	<b>Builder</b>	Standfast Yachts BV
<b>Built</b>	1993	<b>Cabins</b>	5
<b>Material</b>	GRP	<b>Berths</b>	10
<b>Engine(s)</b>	1 x Yanmar 4LHA-HTP diesel	<b>Hp/Kw</b>	161.00 (hp), 118.00 (kw)
<b>Asking price</b>	sold (VAT )	<b>Lying</b>	contact sales office

## CONTACT

<b>Sales office</b>	De Valk Costa Blanca	<b>Telephone</b>	+34 96 50 21 569
<b>Address</b>	Costa Blanca Region 03730 Javea Alicante ES	<b>E-mail</b>	costablanca@devalk.nl

## DISCLAIMER

These particulars are given in good faith as supplied but cannot be guaranteed.



## GENERAL

Model	STANDFAST 66
Type	sailing yacht
LOA (m)	20,47
Beam (m)	5,32
Draft (m)	2,68
Air draft (m)	28,00
Headroom (m)	2,05
Year built	1993
Builder	Standfast Yachts BV
Country	The Netherlands
Designer	Ed Dubois Naval Architects
Displacement (t)	38
CE norm	NA
Hull material	GRP
Hull colour	blue
Hull shape	round-bilged
Keel type	fin keel With torpedo
Bilge keels	yes
Superstructure material	GRP White
Deck material	GRP Sandwich
Deck finish	teak Very good condition
Superstructure deck finish	teak Very good condition
Cockpit deck finish	teak Very good condition
Antifouling (year)	Spring 2021
Dorades	yes
Window material	polycarbonate
Deckhatch	Goiot, with darkening and mosquito screens
Fuel tank (litre)	epoxy 3 tanks, in total 1500
Level indicator (fuel tank)	yes
Freshwater tank (litre)	Total 750 ltr



Blackwater tank (litre)	polyethylene 2 x 120
Level indicator (blackwater)	yes
Greywater tank (litre)	120
Wheel steering	Ss with leather wrap
Emergency tiller	yes
Extra info	<a href="https://www.standfast66.com/">https://www.standfast66.com/</a>

## ACCOMMODATION

Cabins	5
Berths	10
Crew cabin	yes
Crew berths	2
Interior	teak
Layout	Owners aft cabin
Floor	teak and holly
Saloon	Beautiful blue leather finish
Headroom saloon (m)	2.05
Air-conditioning	reverse cycle airco In 4 cabins
Navigation center	yes
Chart table	yes
Aft Cabin	yes
Dinette to convert into berth	Hydraulic, no extra cushions
Galley	yes
Countertop	Duropol Off white
Sink	stainless steel Double
Cooker	calor gas 4 burner, semi professional
Oven	Ss
Microwave	Sharp, stainless steel
Fridge	250 ltr
Freezer	150 ltr
Hot water system	220V + engine 120 ltr



Water pressure system	electrical
Manual and/or foot pump	yes
Dishwasher	Bosch
Coffee maker	yes
Owners cabin	double bed Aft cabin
Bed length (m)	2.05
Wardrobe	hanging/drawers/shelves
Bathroom	en suite
Toilet	en suite
Toilet system	manual
Wash basin	in the bathroom
Shower	en suite
Guest cabin 1	double bed With extra bed
Bed length (m)	2
Wardrobe	hanging/drawers/shelves
Bathroom	en suite
Toilet	en suite
Toilet system	manual
Wash basin	in the bathroom
Shower	en suite
Guest cabin 2	bunk bed
Bed length (m)	2
Wardrobe	yes
Bathroom	yes
Toilet	shared
Toilet system	manual
Wash basin	in the bathroom
Shower	shared
Guest cabin 3	bunk bed
Bed length (m)	2
Wardrobe	yes
Bathroom	yes



Toilet	en suite
Toilet system	manual
Wash basin	in the bathroom
Shower	shared
Guest cabin 4	bunk bed Crew
Bed length (m)	2
Wardrobe	hanging/drawers/shelves
Bathroom	yes
Toilet	en suite
Toilet system	manual
Wash basin	in the bathroom
Shower	en suite
Washing machine	Indesit < 7kg, top loader
Extra info	Very neat , bright and light interior
Extra info	Due Sandwich well isolated in summer and winter

## MACHINERY

No of engines	1
Make	Yanmar
Type	4LHA-HTP
HP	161
kW	118,00
Fuel	diesel
Year installed	2013
Maximum speed (kn)	10,00
Cruising speed (kn)	8,00
Consumption (l/hr)	7,00
Range (nm)	1700
Engine hours	750
Drive	shaft
Shaft seal	Volvo replaced 2013



Engine controls	bowden cable
Gearbox	mechanical
Bowthruster	electric Side Power 24v SP 285 TCI 2 speed, with remote
Propeller type	folding
Propeller blades	3
Propeller shaft material	stainless steel
Shaft lubrication	water
Manual bilge pump	yes
Electric bilge pump	yes
Electrical installation	yes
Generator	silent separator Fisher Panda 12 Kw
Running hours generator	936
Start battery	2
Service battery	6 x 235 Ah
Generator battery	2
Bowthruster battery	2
Battery charger	2 x Victron Skylla 24/100
Inverter	2013 Victron 24/3000
Shorepower	with cable Double
Watermaker	240 ltr/hour

## NAVIGATION

Compass	Suunto
Electric compass	On B&G
Depth sounder	B&G Hydra
Log	B&G Hydra
Windset	B&G Hydra
Repeater	B&G Hydra
VHF	Sailor RT2048 & Icom M505
VHF handheld	Icom M 35
Autopilot	B&G



Rudder angle indicator	On pilot
Radar	Garmin 18 HD
GPS	Garmin
Plotter	Garmin Map 7012 & Garmin GPS Map 4008 (2019)
Weather receiver	Furuno weather fax
AIS transponder	Garmin AIS 600
EPIRB	406P Lokata

## EQUIPMENT

Sprayhood	yes
Bimini	Exended version
Cockpit cushions	yes
Cockpit table	Foldable on floor
Bathing platform	Hydraulic, with teak
Boarding ladder	Ss
Gangway	Carbon extra large
Deck shower	yes
Anchor	Bruce Pressure cleaning system chain/chain locked almost mid ship.
Anchor chain	Ss 13 mm/100 mtr
Anchor 2	yes
Windlass	hydraulic
Deck wash	yes
Dinghy	Gommonautica
Outboard	Yamaha 40 Hp
Outboard support	yes
Sea railing	yes
Life raft	Needs survey
Life raft (pers)	8
Lifejackets	10
Safety lines on deck	yes



<b>Radar reflector</b>	yes
<b>Mooring lines</b>	yes
<b>Spare parts</b>	Loaded !
<b>Tools</b>	yes
<b>Radio-cd player</b>	Blaupunkt
<b>Cockpit speakers</b>	4x
<b>Speakers in salon</b>	yes
<b>Extra info</b>	Complete dive sets on board
<b>Extra info</b>	Bauer diving compressor
<b>Extra info</b>	Built-in safe

## RIGGING

<b>Rigging</b>	sloop
<b>Standing rigging</b>	Rod
<b>Brand mast</b>	Proctor
<b>Material mast</b>	aluminium coated White + Carbon boom
<b>Spreaders</b>	4
<b>Keel stepped mast</b>	yes
<b>Battcars</b>	yes
<b>Fully battened mainsail</b>	North 2016 excellent condition
<b>Cutterstay</b>	Reackman hydraulic furler
<b>Jib</b>	North 2016 on cutterstay
<b>Genoa</b>	North Triradial cut 2016
<b>Genoa furler</b>	Reckmann hydraulic
<b>Reefing System</b>	Reckmann furler, hydraulic
<b>Backstay adjuster</b>	hydraulic
<b>Boomvang</b>	hydraulic
<b>Primary sheet winch</b>	Total 21 Barient, all self tailing
<b>Secondary sheet winch</b>	4 hydraulic Barient, self tailing
<b>Isolated backstay</b>	yes
<b>Extra info</b>	2removable back stays





# STANDFAST 66



# STANDFAST 66



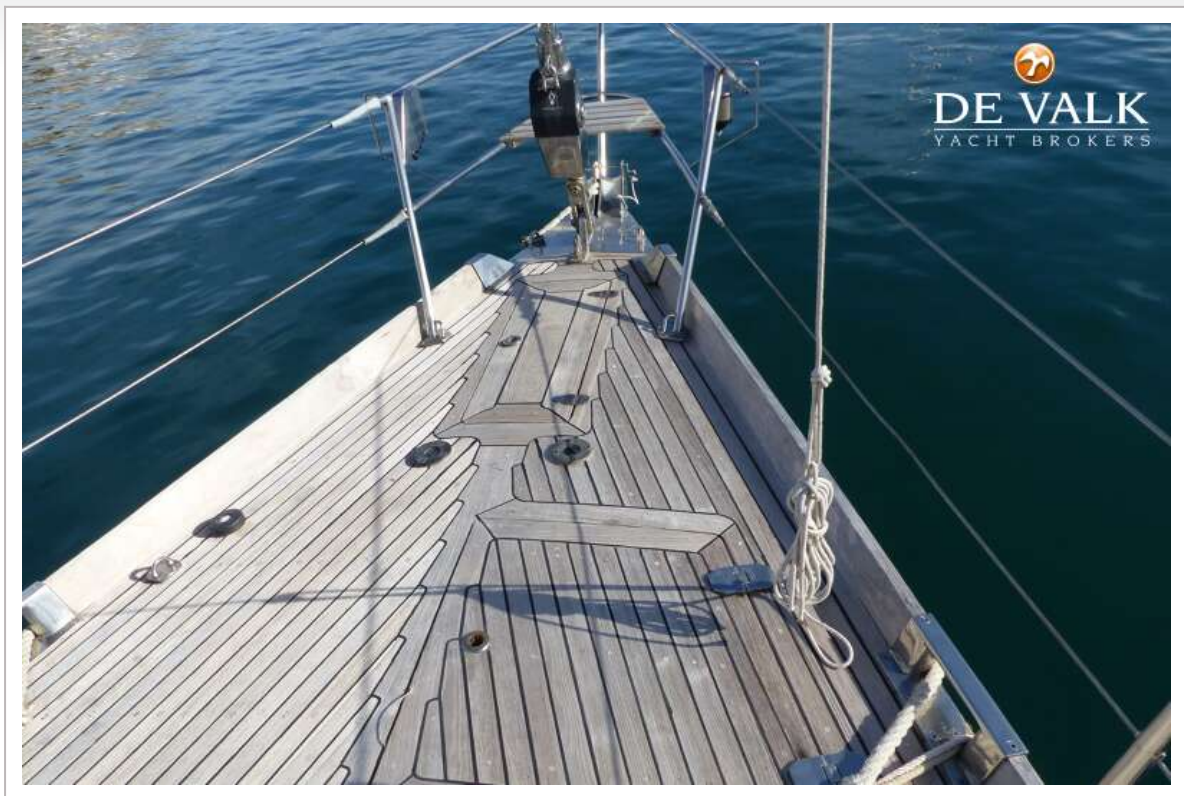
# STANDFAST 66



# STANDFAST 66



# STANDFAST 66



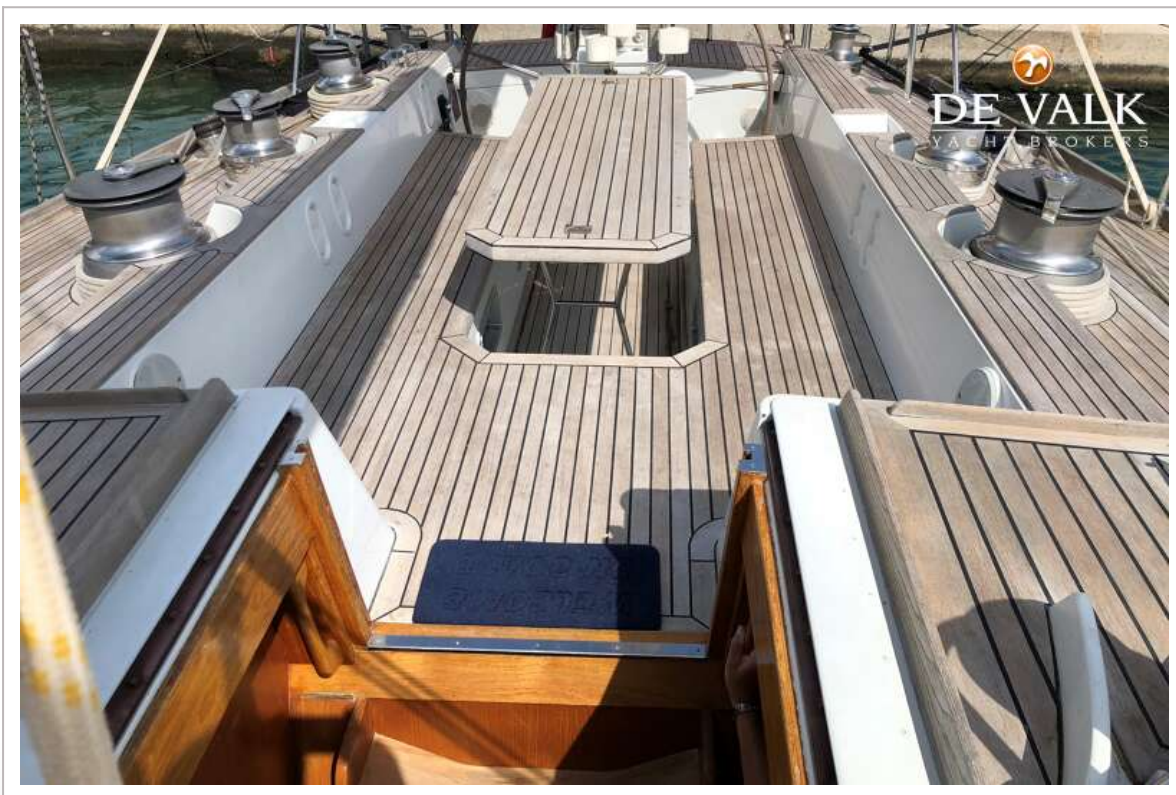
# STANDFAST 66



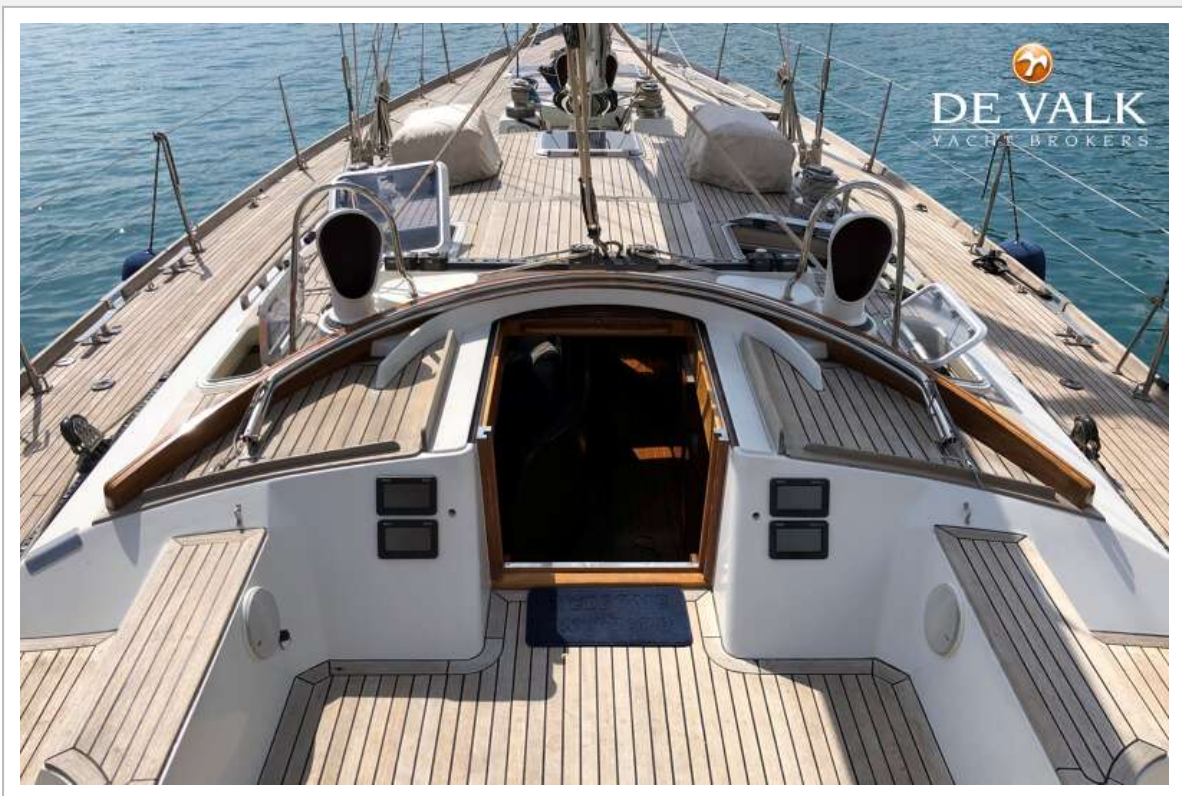
# STANDFAST 66



# STANDFAST 66



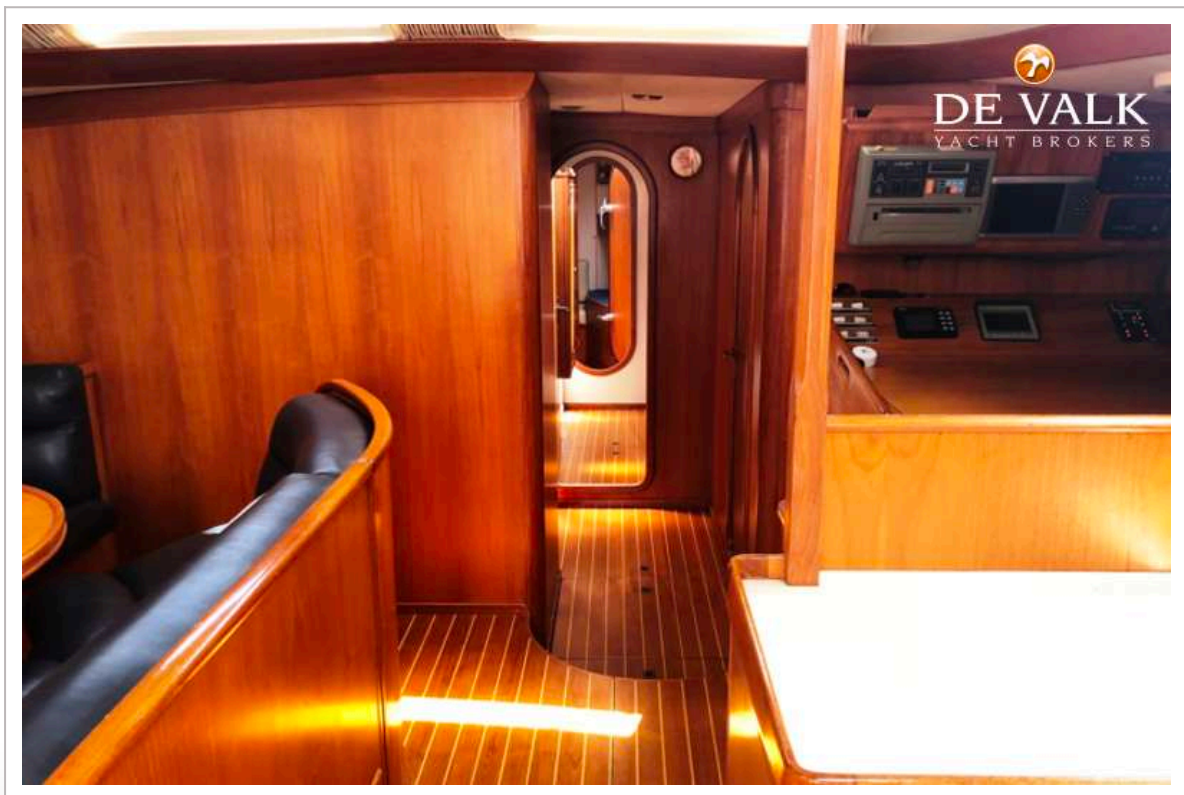
# STANDFAST 66



# STANDFAST 66



# STANDFAST 66



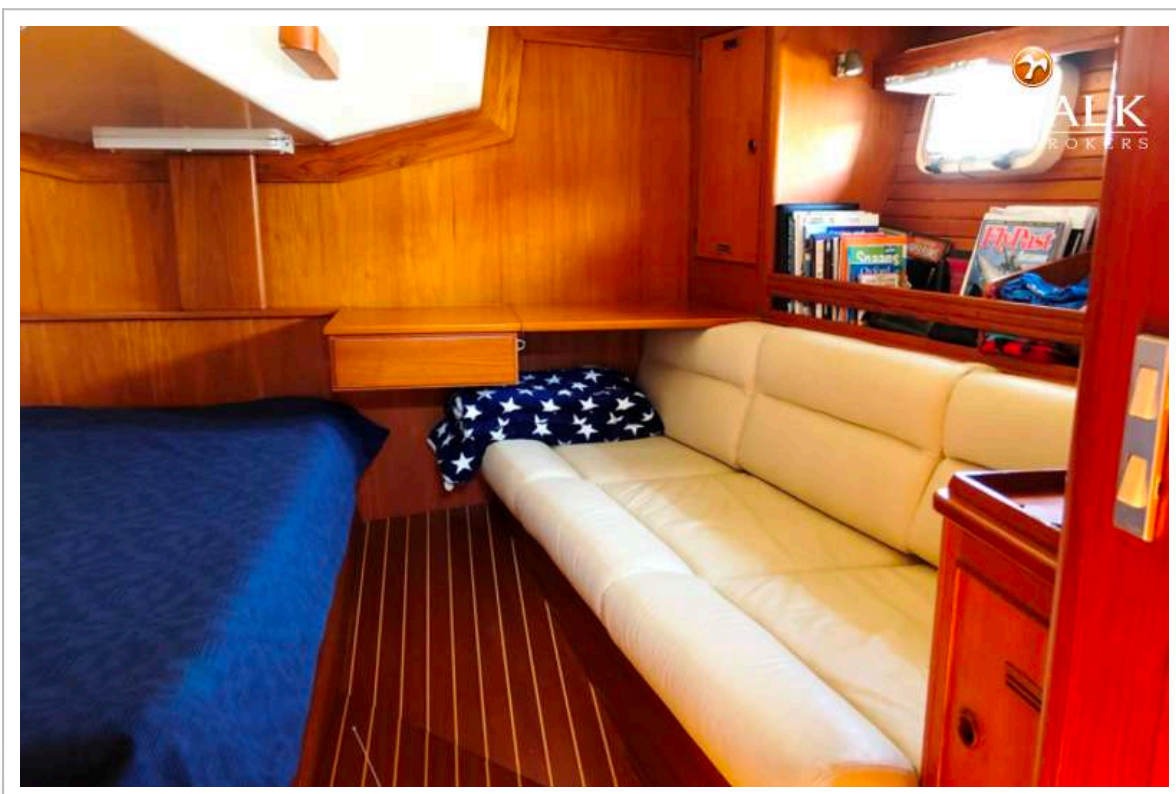
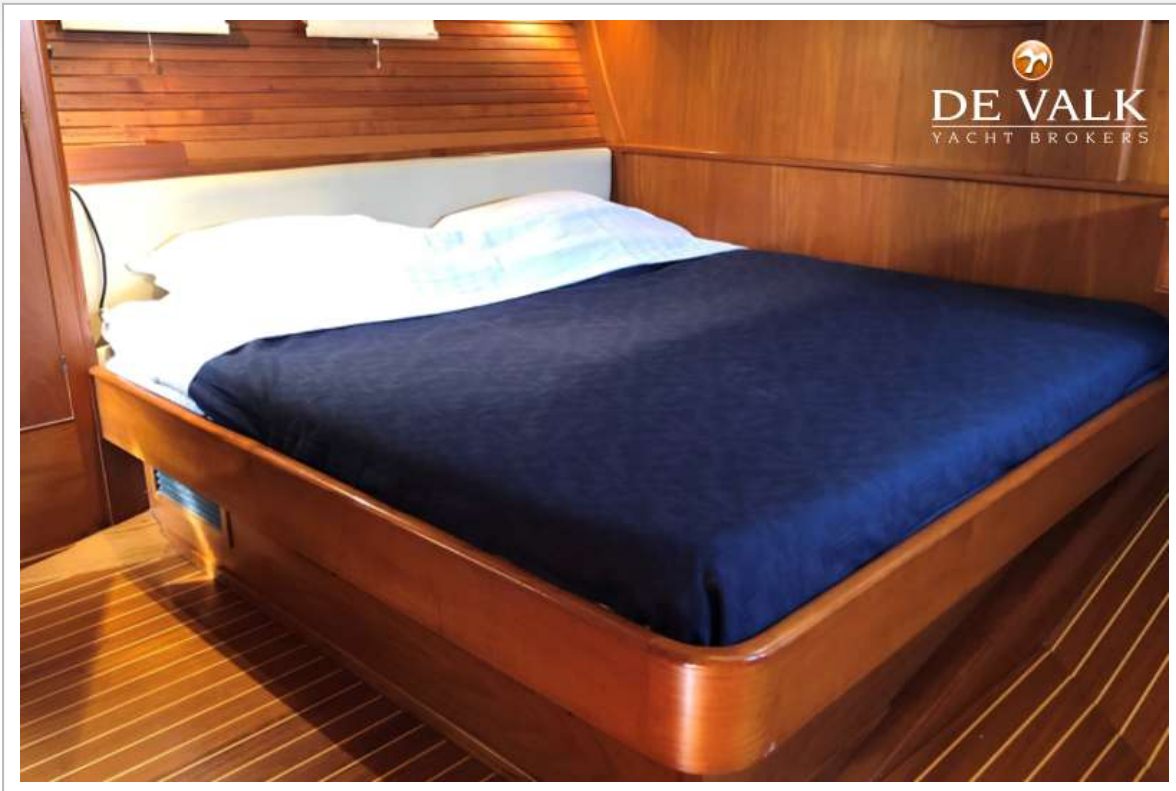
# STANDFAST 66



# STANDFAST 66



# STANDFAST 66



# STANDFAST 66



# STANDFAST 66



## STANDFAST 66



# STANDFAST 66

