



DE VALK
YACHT BROKERS



JETTEN 50 MPC-FLY



DE VALK
YACHT BROKERS

JETTEN 50 MPC-FLY

BROKER'S COMMENTS

"Saba" is a blue water Fly bridge version of the popular Jetten 50 MPC model. Without a doubt the best equipped Jetten 50 MPC ever delivered. Full options include airco, stabilizers & submersible platform. She is in as new condition. Maintained by a knowledgeable professional captain and constantly upgraded. Many double safety systems for comfortable safe cruising the seas.

Hans Visser

SPECIFICATIONS

Dimensions	16.25 x 4.88 x 1.35 (m)	Builder	Jetten
Built	2015	Cabins	3
Material	Steel	Berths	6
Engine(s)	2 x Vetus deutz DET 66E 45 2 A diesel	Hp/Kw	2 x 170.00 (hp), 124.95 (kw)
Asking price	€ 830.000 (VAT Paid)	Lying	elsewhere / Not at sales office

CONTACT

Sales office	De Valk Hindeloopen B.V.	Telephone	+31 514 52 40 00
Address	Oosterstrand 1 8713 JS Hindeloopen NL	E-mail	hindeloopen@devalk.nl

DISCLAIMER

These particulars are given in good faith as supplied but cannot be guaranteed.



JETTEN 50 MPC-FLY

GENERAL

Model	JETTEN 50 MPC-FLY
Type	motor yacht
LOA (m)	16,25
LWL (m)	14,37
Beam (m)	4,88
Draft (m)	1,35
Air draft (m)	8,45
Air draft min (m)	5,35
Headroom (m)	2,03
Year built	2015
Launched	March 2015
Builder	Jetten
Country	The Netherlands
Designer	Vripack
Displacement (t)	32
Ballast (tonnes)	lead 515 kg
Gross tonnage	35,8
Net tonnage	21,5
CE norm	A
Hull material	steel
Hull colour	grey Alexseal (awlgripp)
Hull thickness (mm)	6 and 5 mm
Hull shape	multi hard chine
Keel type	box keel
Superstructure material	steel GRP Flybridge
Superstructure (mm)	4
Deck plate thickness (mm)	4
Rubbing strake	rubber
Deck material	steel
Deck finish	teak Permateak under the



JETTEN 50 MPC-FLY

Superstructure deck finish	teak
Cockpit deck finish	teak
Antifouling (year)	20-09-2020
Dorades	2 x
Window frame	Flush glued
Window material	double glazing High impact
Deckhatch	2 emergency to engine room from cockpit, 1 from lazaret
Portholes	6
Insulation	foam
Flybridge	yes
Flybridge cover	For pilot chair, Instruments & wetbar.
Flybridge suncover	yes
Radar arch	collapsible
Fuel tank (litre)	steel 2250
Level indicator (fuel tank)	On navigation instruments plus analog backup
Freshwater tank (litre)	stainless steel 875
Level indicator (freshwater)	On navigation instruments plus backup
Blackwater tank (litre)	stainless steel 350
Level indicator (blackwater)	On navigation instruments plus backup
Blackwater tank extraction	deck extraction + pump
Greywater tank (litre)	stainless steel Graywater 25 lt tank , Overboard or to blackwater tank
Wheel steering	powersteer
Inside helm position	Besenzoni pilot seats
Flybridge helm position	powersteer With manual backup
Emergency tiller	yes
Extra info	CE and Rhine Hull Length is 14.95
Extra info	Underwater lights
Extra info	Double UltraSonic antiBarnacle system.

ACCOMMODATION



JETTEN 50 MPC-FLY

Cabins	3
Berths	6
Interior	oak
Layout	Private
Floor	teak and holly New
Open cockpit	yes
Pilot house/deck saloon	yes
Headroom saloon (m)	2,05
Air-conditioning	reverse cycle airco Dometic 3 units total 25000 BTU (salon guest and owner)
Navigation center	yes
Opening door to cockpit	4 black aluminium doors fully opening
Galley	2 x 110 countertop
Countertop	corian LG High-Mac White
Sink	stainless steel
Cooker	electric 4 burner
Microwave/oven combi	Miele
Fridge	150 Liter with freezer compartment
Hot water system	220V + engine 80 Liter boiler
Water pressure system	
Crockery	yes
Owners cabin	French bed
Bed length (m)	2,02
Wardrobe	walk-in closet
Bathroom	en suite
Toilet	separate
Toilet system	electric
Wash basin	in the bathroom
Shower	separate
Guest cabin 1	French bed
Bed length (m)	2,02
Wardrobe	hanging and shelves



JETTEN 50 MPC-FLY

Bathroom	separate
Toilet	separate
Toilet system	electric
Wash basin	at the toilet
Shower	separate
Guest cabin 2	bunk bed Easy convert cabin
Bed length (m)	2,02
Wardrobe	hanging and shelves
Bathroom	shared
Toilet	shared
Toilet system	electric
Wash basin	at the toilet
Shower	shared
Washing machine/dryer combi	Only connections for one
Flybridge	yes
Wet bar	With fridge on fly bridge
Extra info	All Led, dimmer + red light system in wheel house & F/B

MACHINERY

No of engines	2
Make	Vetus deutz
Type	DET 66E 45 2 A
HP	170
kW	124.95
Fuel	diesel
Year installed	2014
Maximum speed (kn)	11
Cruising speed (kn)	8,5
Consumption (l/hr)	44
Range (nm)	1270
Engine hours	680



JETTEN 50 MPC-FLY

Engine cooling system	freshwater heat exchanger Rebuilt 2022
Drive	shaft
Shaft seal	yes
Engine controls	electrical
Gearbox	hydraulic
Bowthruster	hydraulic Vetus 310 160 kgF with a PTO on each engine
Sternthruster	hydraulic Vetus 310 160 kgF with a PTO on each engine
Thrust bearing	yes
Propeller type	fixed
Propeller blades	4
Propeller shaft material	stainless steel
Shaft lubrication	water
Manual bilge pump	All bilge pumps with dedicated batteries and chargers
Electric bilge pump	6 x automatic bilge pumps ow 3 x independent power & chargers
Bilge alarm	Bilge alarms - 6 + Automatic GSM + email alarm
Electrical installation	12 & 24 V DC & 230 V 50 Hz with sockets throughout incl USB
Generator	silent separator Onan 11MDBKN-5873F 11KVA C 130474770
Running hours generator	380
Batteries	495 Ah traction 2 Volt Cells 24 V
Start battery	Red top Optima new
Navigation Battery	Seperate emergency battery
Generator battery	Red top Optima New
Battery monitor	Mastervolt & Power loss with GSM call alarm
Battery charger	2 x 12 V 10 Amp for start batteries
Battery charger/inverter	24/5000/120
Diode battery combiners	yes
Shorepower	with cable 32 Amp
Insulation transformer	Galvanic isolator
Stabilizers	fin Naiad Hydraulic with a PTO on each engine
Extra info	44 l/h @ 8,2 kn
Extra info	Dual Racor type 7800 filters for all engines with indicator
Extra info	Fuel polish system 1000 l/h.



NAVIGATION

Compass	2 Magnetic Compasses
Compass on flybridge	yes
Electric compass	Raymarine IS70I
Multi control display	Raymarine IS70I
Depth sounder	Raymarine IS70I
Depth sounder/log	RayMarine Element HV 12 sounder, bottom & side scanner.
Log	Raymarine IS70I
Windset	Raymarine windvane IS70I
Repeater	4 i70s data + 1 i70 on F/B
VHF	Ray 260 VHF + second hand set in master 2nd independent on FB
Autopilot	2 i70p autopilot knob controls & Tiller FollowUp on F/B
Rudder angle indicator	yes
Radar	yes
GPS	yes
Plotter	yes
Radar/plotter	1 RayMarine MFD gS95 Lighthouse II on fly
Radar/GPS/plotter	Full RayMarine Lighthouse II gS glass bridge system & twin RMK 9
Navtex	Furuno NavTex NX300
PC connection	Digital Yacht, inav 4G connect, WL510 Wi-Fi system
Wifi antenna	Digital Yacht, inav 4G connect, WL510 Wi-Fi system
AIS transceiver	Raymarine AIS 650 & AIS SART S1000 Smart
Transmitter	Inmarsat II docking Station + Antenna
EPIRB	EPIRB
Personal MOB transmitter	Life Tag MOB system
Camera	FlirT300 Night Camera & 4 IP caperas side, stern and enginerroom
Navigation lights	Doubl LopoLight Nav, Anchor, NOC, Blue lights, Stern, Yellow tow
Searchlight	Jabesco search light Remote operated from main house & F/B



JETTEN 50 MPC-FLY

Loudhailer	Full Intercom to cabins, wheel house, F/B & Engine room
Extra info	3 MFD Raymarine 165 units. 1 on F/B
Extra info	Life Tag MOB system

EQUIPMENT

Cockpit cushions	yes
Cockpit table	yes
Cockpit chairs	Fixed round bench with custom cushions
Bathing platform	HB Hydraulic submersible stern platform
Boarding ladder	stainless steel
Transom door	yes
Gangway	Besenzoni electric hydraulic
Anchor	Bruce Rocna 40Kg
Anchor chain	100M Certified 10 mm chain
Windlass	hydraulic Maxwell
Capstan	electric Maxwell fore
Windlass aft	electrical 2 x Maxwell
Deck wash	yes
Dinghy	rigid inflatable Zodiac
Outboard	Tohatsu 9.9 hp
Davits	stainless steel Davit in back ramp for dingy
Davits controls	electrical
Sea railing	stainless steel
Grab rail (superstructure)	stainless steel
Railing side opening gates	yes
Pushpit	yes
Pulpit	yes
Life raft	container Lalizas with pyrotechnic set
Life raft (pers)	6
Lifejackets	yes
Safety harness	yes



JETTEN 50 MPC-FLY

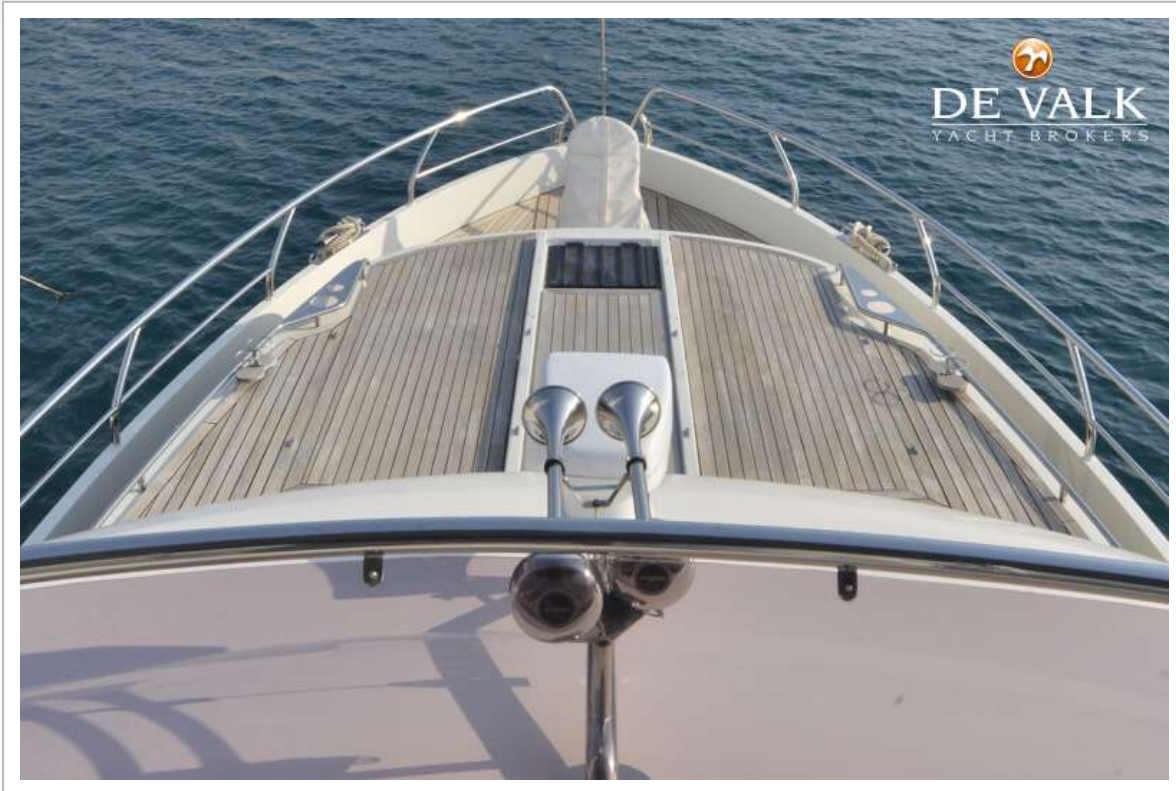
Lifebuoy	2 x (one additional excluded from the sale)
Danbuoy	yes
Wiper	3 x
Horn	electric Horn With RayMarine Fog signal & P/A
Radar reflector	yes
Fenders	6
Mooring lines	1 set (4) Dyneema 12- & 14-MM Mooring lines
Spare parts	Extensive various incl pumps, gaskets, electronics etc
Alarm system	Spot Trace position & Theft Alarm
TV	2 x LCD one in salon and one in master
TracVision ball	RayMarine St. TV system
Radio	Fusion
Radio-cd player	Fusion
DVD player	Fusion
iPod connection	Fusion
Cockpit speakers	On fly bridge only
Speakers in salon	yes
Clock - barometer	yes
Fire extinguisher	In each cabin & FireBoy Xintex Automatic system in forward bilg
Latest extinguisher survey	All up to date
Extinguisher in engine room	Alarm & Siren in Engine room connected to GSM alarm
Auto extinguisher system	Ajax Automatic & FireBoy Xintex Automatic backup
Extra info	Fire, smoke & CO detectors all over the vessel near exinguishers



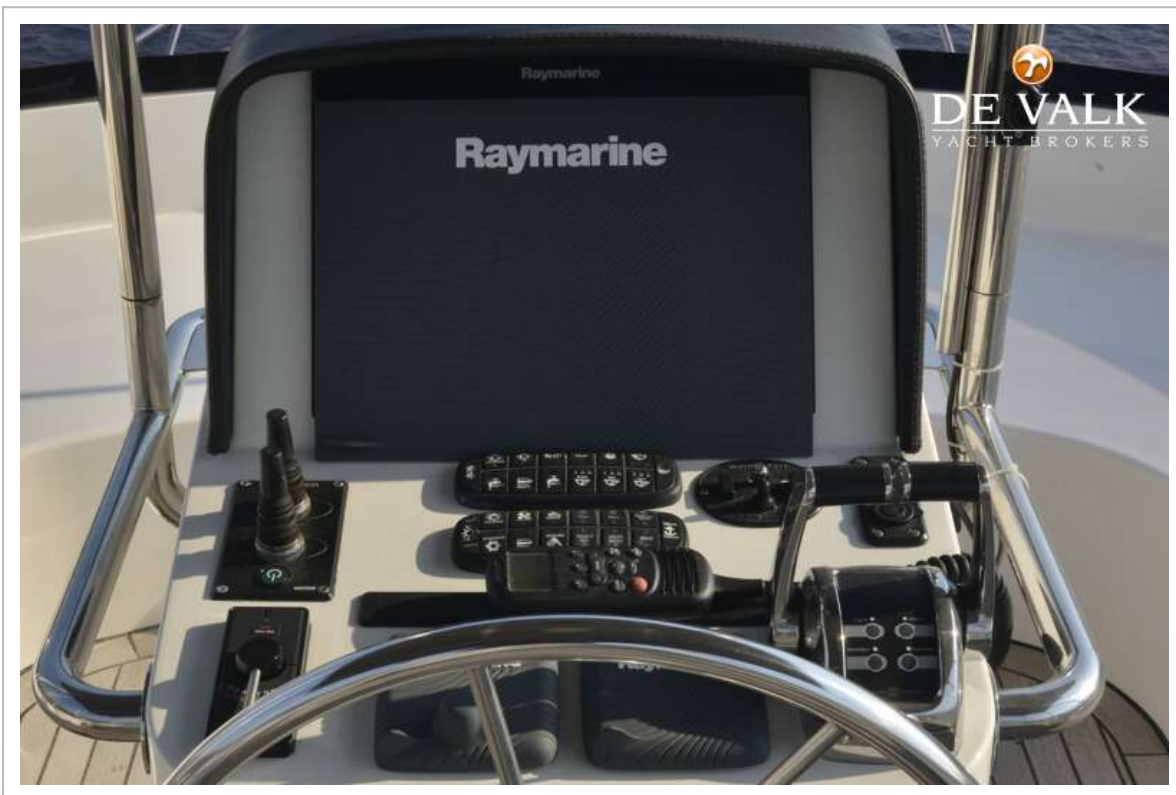
JETTEN 50 MPC-FLY



JETTEN 50 MPC-FLY



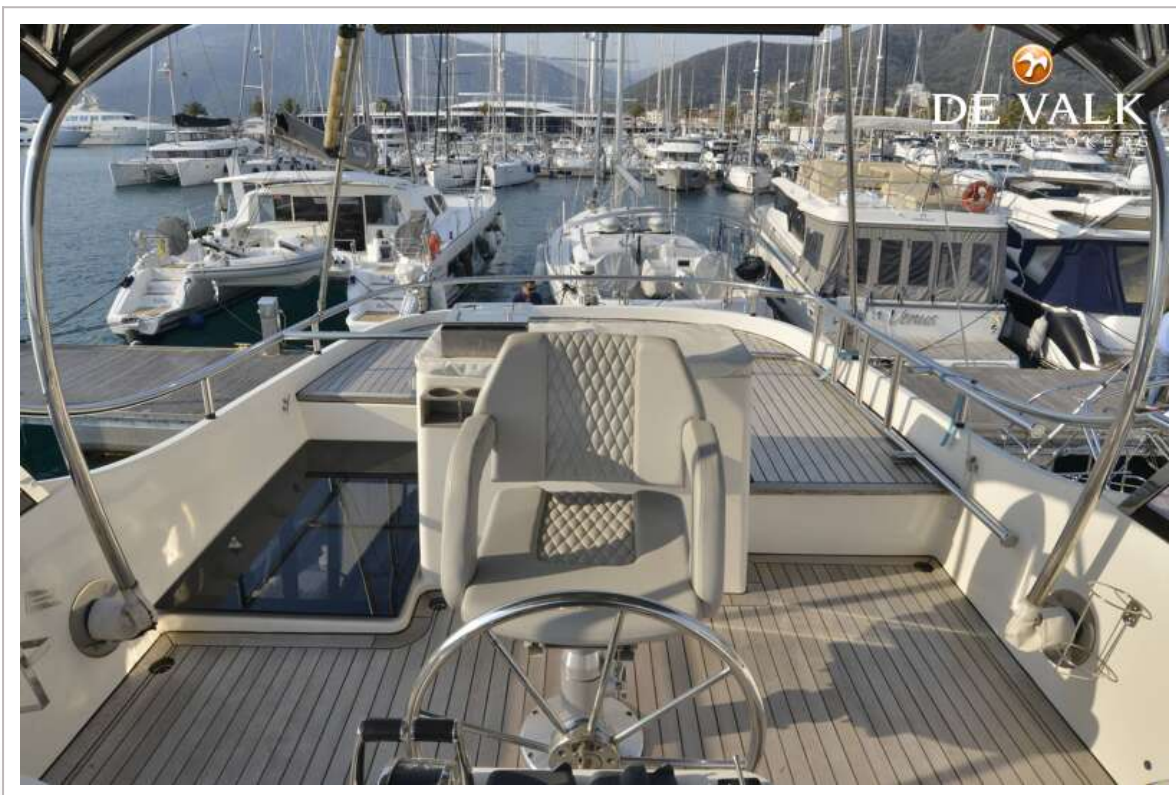
JETTEN 50 MPC-FLY



JETTEN 50 MPC-FLY



JETTEN 50 MPC-FLY



JETTEN 50 MPC-FLY



JETTEN 50 MPC-FLY



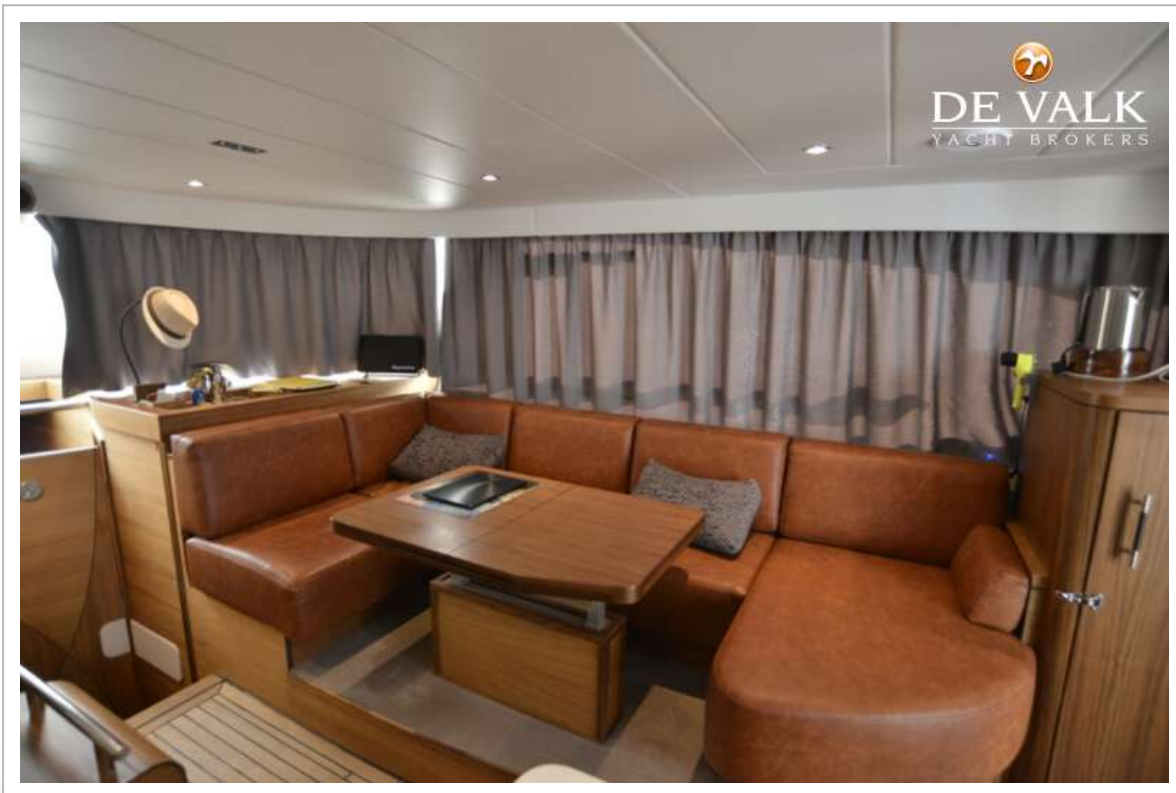
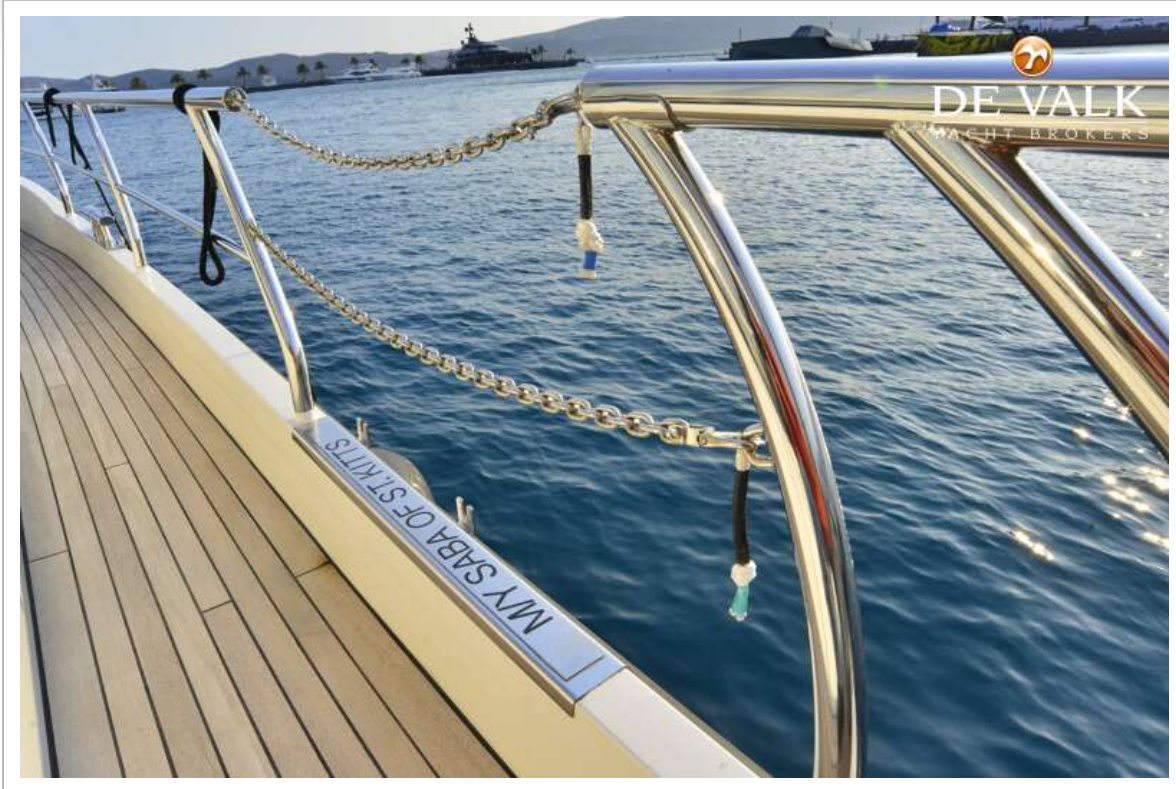
JETTEN 50 MPC-FLY



JETTEN 50 MPC-FLY



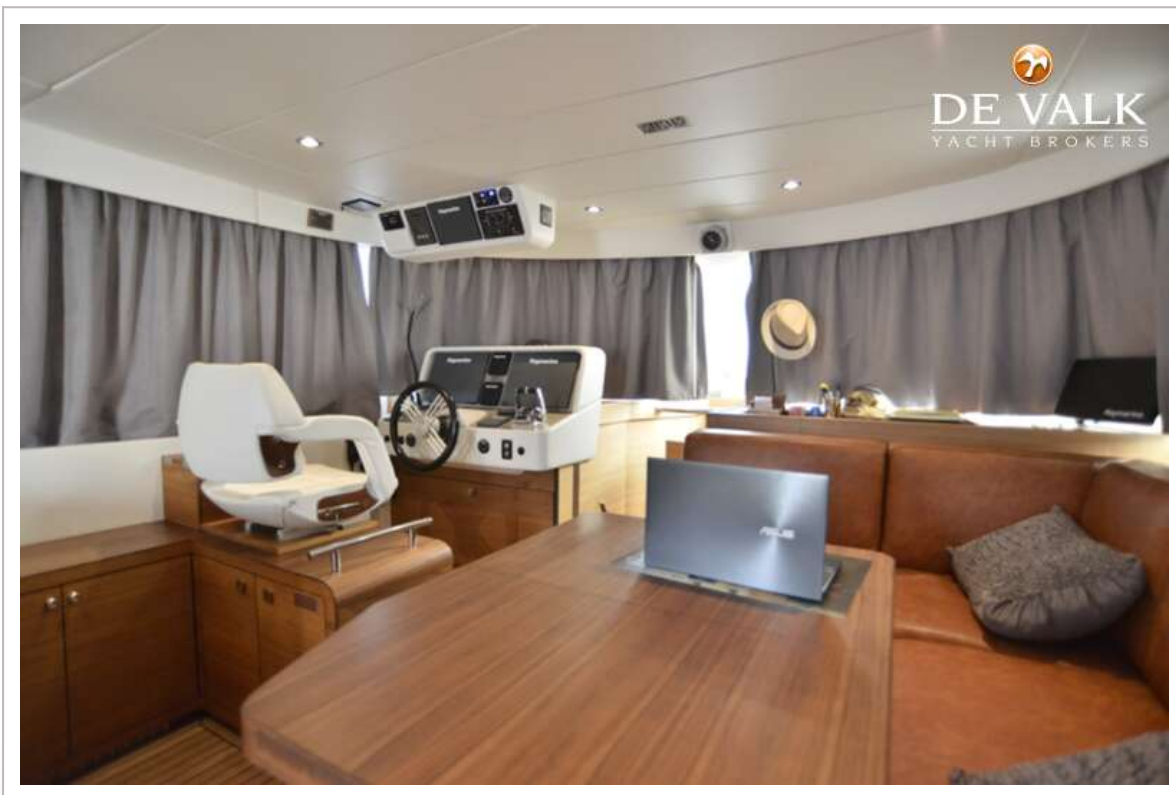
JETTEN 50 MPC-FLY



JETTEN 50 MPC-FLY



JETTEN 50 MPC-FLY



JETTEN 50 MPC-FLY



JETTEN 50 MPC-FLY



JETTEN 50 MPC-FLY



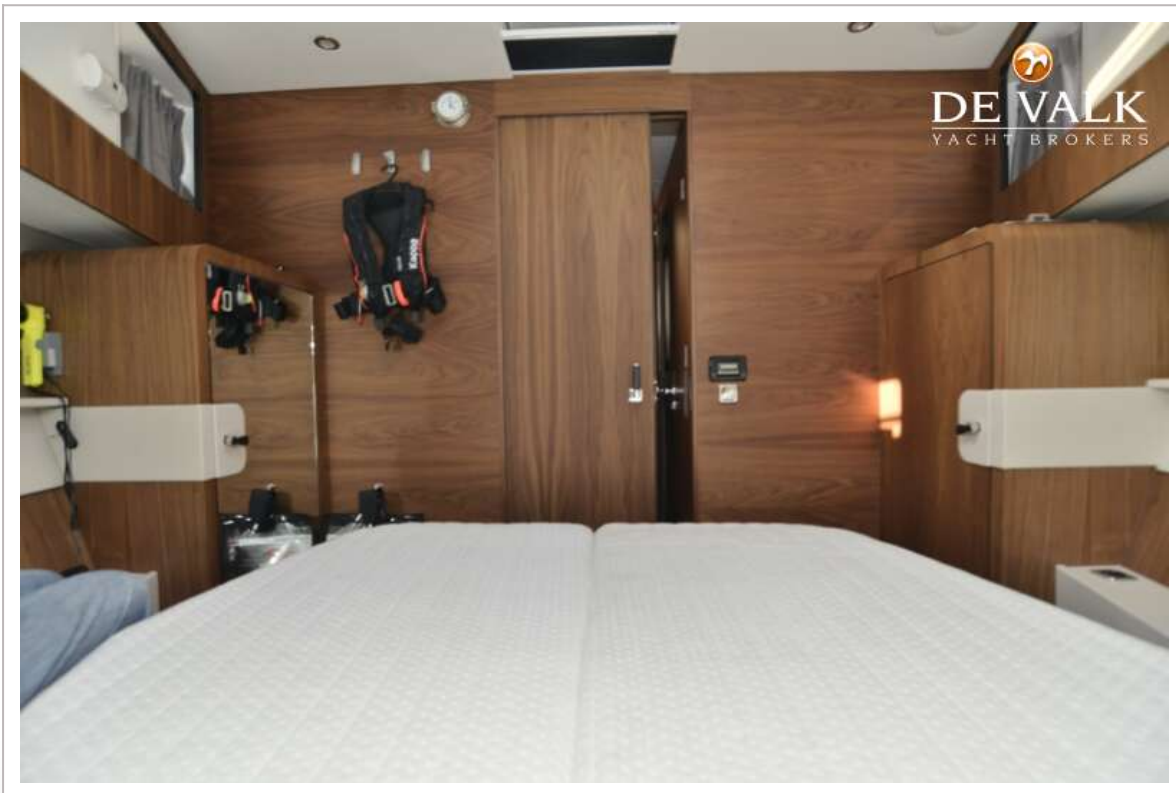
JETTEN 50 MPC-FLY



JETTEN 50 MPC-FLY



JETTEN 50 MPC-FLY



JETTEN 50 MPC-FLY



JETTEN 50 MPC-FLY

