



DE VALK
YACHT BROKERS



GULET 31 M.



DE VALK
YACHT BROKERS

GULET 31 M.

BROKER'S COMMENTS

The Gulet 31m. Altair has recently been totally refitted, This refit included a new hull and masts. The Gulet 31m. Altair includes hi-tech, state of the art instrumentation, made in Germany solar panel & electric system, luxury class cabins with en suite bathrooms, two salons and three sun decks on different levels for privacy. The Gulet 31 m. Altair has been privately used. She offers quiet, smooth and comfortable sailing and is known to be one of the fastest sailing Gulets on the market. She is fully licensed for charter, and has been occasionally chartered with great success.

Hans Visser

SPECIFICATIONS

Dimensions	31.00 x 6.90 x 2.90 (m)	Builder	Viking
Built	1992	Cabins	6
Material	Wood	Berths	12
Engine(s)	2 x MTU diesel	Hp/Kw	2 x 193.00 (hp), 141.85 (kw)
Asking price	€ 549.000 (VAT Not paid)	Lying	elsewhere / Not at sales office

CONTACT

Sales office	De Valk Hindeloopen	Telephone	+31 514 52 40 00
Address	Oosterstrand 1 8713 JS Hindeloopen The Netherlands	E-mail	hindeloopen@devalk.nl

DISCLAIMER

These particulars are given in good faith as supplied but cannot be guaranteed.



GULET 31 M.

GENERAL

Model	GULET 31 M.
Type	motorsailer
LOA (m)	31,00
Beam (m)	6,90
Draft (m)	2,90
Year built	1992
Launched	1993
Builder	Viking
Country	Turkey
Displacement (t)	98
Ballast (tonnes)	concrete
Gross tonnage	98,11
Net tonnage	62,71
Hull material	wood
Hull colour	blue Mahogany painted
Hull thickness (mm)	65-71 mm
Hull shape	S-bilged
Keel type	long keel
Superstructure material	wood Mahogany Tongue and Groove replaced in 2011
Rubbing strake	yes
Deck material	wood
Deck finish	teak
Superstructure deck finish	teak
Cockpit deck finish	teak
Antifouling (year)	2022
Window frame	stainless steel
Window material	glass
Portholes	wood epoxy
Insulation	foam
Flybridge	Elevated



GULET 31 M.

Flybridge cover	yes
Fuel tank (litre)	stainless steel 4000
Level indicator (daytank)	yes
Freshwater tank (litre)	polyethylene 1500
Level indicator (freshwater)	yes
Blackwater tank (litre)	polyethylene 1500
Level indicator (blackwater)	yes
Blackwater tank extraction	pump
Wheel steering	hydraulic
Inside helm position	yes
Flybridge helm position	hydraulic
Tiller	yes
More info on hull	Hull completely rebuilt in 2010 in tongue and groove with epoxy
Extra info	Size 101,7" X 22,5" x 9,4"
Extra info	Lloyds classification

ACCOMMODATION

Cabins	6
Berths	12
Crew cabin	2
Crew berths	4
Interior	bambo Mahogany &
Layout	Charter
Floor	carpet
Pilot house	yes
Deck saloon	yes
Saloon	yes
Heating	electric 220V
Air-conditioning	reverse cycle airco For all cabins & salons
Chart table	yes
Sliding door to cockpit	yes



GULET 31 M.

Galley	yes
Countertop	granite
Sink	stainless steel
Cooker	calor gas 4 burner
Oven	yes
Microwave	yes
Fridge	2 fridges
Freezer	2 freezers
Hot water system	220V
Water pressure system	electrical
Dishwasher	Bosch
Crockery	For 8
Owners cabin	French bed In the bow
Bed length (m)	2,50 x 1.80
Wardrobe	hanging and drawers
Bathroom	en suite
Toilet	en suite
Toilet system	vacuum
Wash basin	in the bathroom
Shower	en suite
Guest cabin 1	double bed VIP starboard aft
Bed length (m)	2.50 x 1.80
Wardrobe	hanging/drawers/shelves
Bathroom	en suite
Toilet	en suite
Toilet system	vacuum
Wash basin	in the bathroom
Shower	en suite
Guest cabin 2	double bed Starboard center
Bed length (m)	2,50 x 1.60
Wardrobe	hanging/drawers/shelves
Bathroom	en suite



GULET 31 M.

Toilet	en suite
Toilet system	vacuum
Wash basin	in the bathroom
Shower	en suite
Guest cabin 3	double bed Starboard centre
Bed length (m)	2.50 x 1.60
Wardrobe	hanging and shelves
Bathroom	en suite
Toilet	en suite
Toilet system	vacuum
Wash basin	in the bathroom
Shower	en suite
Guest cabin 4	double bed Port centre
Bed length (m)	2.50 x 1.60
Wardrobe	hanging/drawers/shelves
Bathroom	en suite
Toilet	en suite
Toilet system	vacuum
Wash basin	in the bathroom
Shower	en suite
Extra info	A 5th guest cabin identical to nr 4 aft
Crew cabin(s)	2
Bathroom (crew)	yes
Toilet (crew)	yes
Toilet system	electric
Wash basin	in the bathroom
Shower (crew)	yes
Washing machine	yes
Ironing facilities	yes
Extra info	Led lighting all new



MACHINERY

No of engines	2
Make	MTU
HP	193
kW	141.85
Fuel	diesel
Maximum speed (kn)	13
Cruising speed (kn)	8
Engine cooling system	freshwater heat exchanger
Shaft seal	yes
Engine controls	yes
Gearbox	hydraulic
Propeller type	fixed
Propeller blades	3
Propeller shaft material	stainless steel
Shaft lubrication	grease
Electric bilge pump	yes
Bilge alarm	yes
Electrical installation	12 & 24 V DC & 240 V AC
Generator	dry exhaust John Deere 35 Kva 2008
Generator 2	dry exhaust Onan 16 Kva 2008
Start battery	yes
Battery monitor	yes
Battery charger	yes
Inverter	yes
Solar panel	8 solar panels for autonomic electric power
Shorepower	with cable
Watermaker	300 l/h

NAVIGATION

Compass	yes
---------	-----



Depth sounder	2013
Log	2013
Windset	2013
Repeater	2013
VHF	2013
VHF handheld	yes
Autopilot	yes
Rudder angle indicator	2013
Radar	2013
GPS	Garmin 2013
Plotter	yes
Navtex	Furuno 2013
Personal computer	yes
PC connection	yes
Radio receiver	yes
Transmitter	yes
Searchlight	2 x 360 degrees remote controled
Extra info	Instrumentation is new & Hi-tech incl pushbutton controls

EQUIPMENT

Bimini	yes
Sun awning	yes
Winter cover	yes
Cockpit cushions	yes
Cockpit table	yes
Cockpit chairs	yes
Bathing platform	yes
Boarding ladder	stainless steel
Gangway	yes
Deck shower	yes
Anchor	Danforth



GULET 31 M.

Anchor chain	yes
Anchor 2	Danforth
Anchor chain	yes
Windlass	hydraulic Double
Dinghy	rigid hull Zodiac 3.7
Outboard	Honda 100 hp new for 40 knots & watersky
Davits	stainless steel
Davits controls	electrical
Sea railing	yes
Grab rail (superstructure)	stainless steel
Pushpit	yes
Pulpit	yes
Life raft	container 2
Life raft (pers)	8 & 8
Last life raft survey	2018
Lifejackets	15
Safety harness	yes
Lifebuoy	4
Wiper	yes
Horn	electric
Fenders	yes
Mooring lines	yes
Spare parts	yes
Tools	yes
Alarm system	yes
TV	yes
TracVision ball	yes
DVD player	One for each cabin & all salons
Surround Sound System	yes
Speakers in salon	yes
Speakers in cabin	yes
Clock - barometer	yes



Fire extinguisher	3 x CO2 & 2 x Halon
Latest extinguisher survey	2018
Extinguisher in engine room	4 plus 1
Auto extinguisher system	yes
Extra info	Fire fighting system with pump

RIGGING

Rigging	ketch
Standing rigging	wire
Brand mast	Custom new mast 2013
Material mast	wood
Spreaders	3 & 2
Mainsail	Quicksails furling 2013
Cutterstay	Quicksails 2013
Mizzen	Furling quicksail 2013
Genoa	Quicksails 2013
Genoa furler	Manual
Cutter furler	Manual
Stormjib	yes
Primary sheet winch	yes
Secondary sheet winch	yes
Genoa sheetwinches	yes



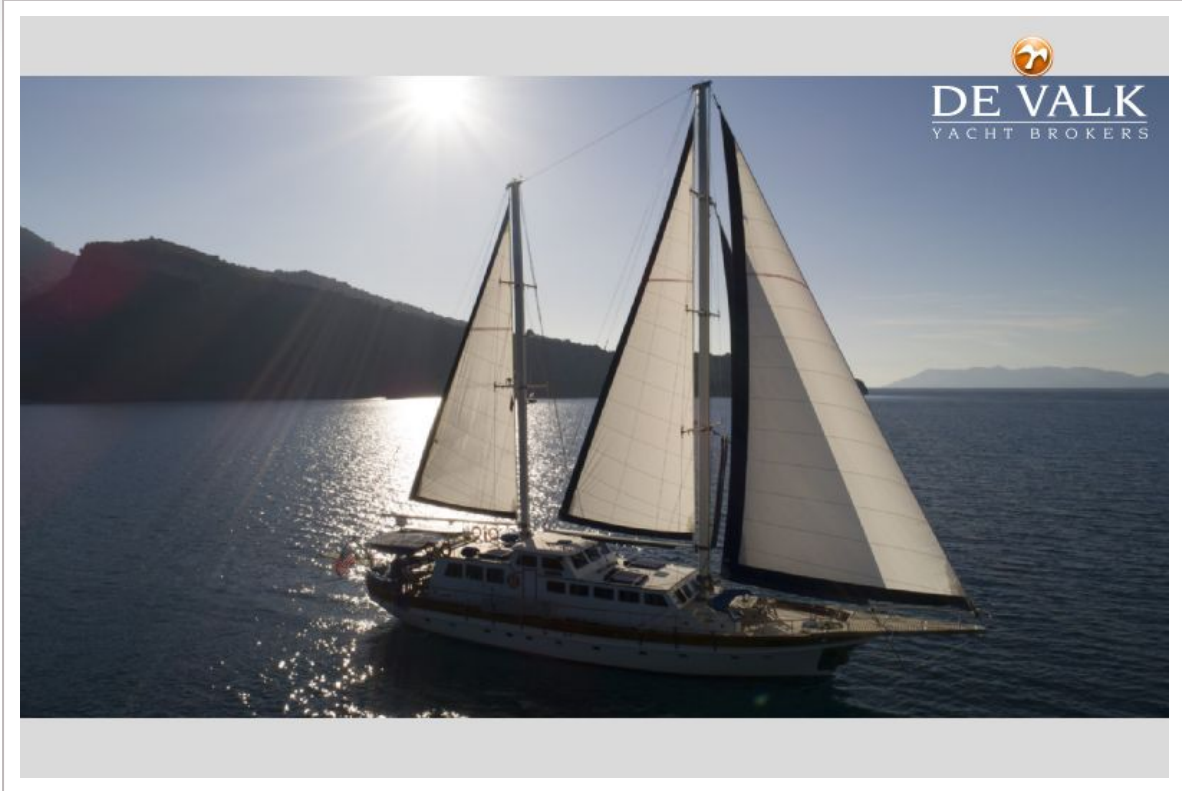
GULET 31 M.



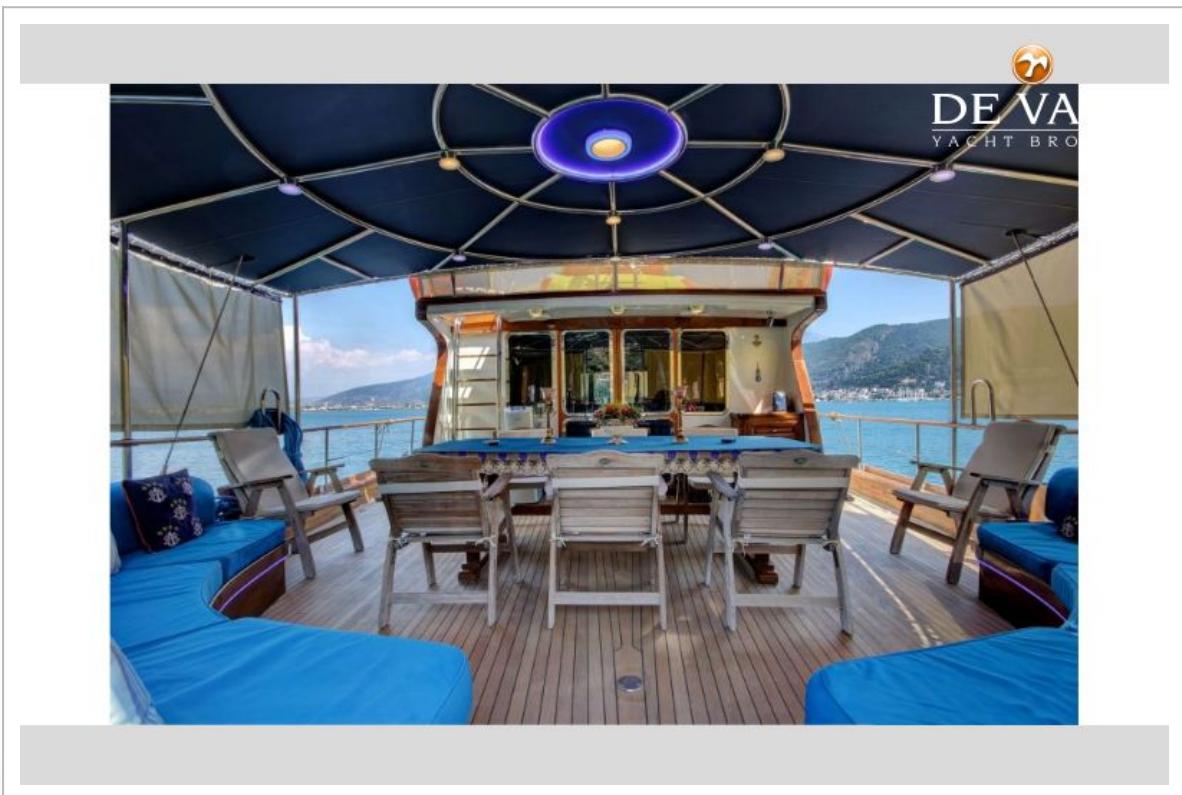
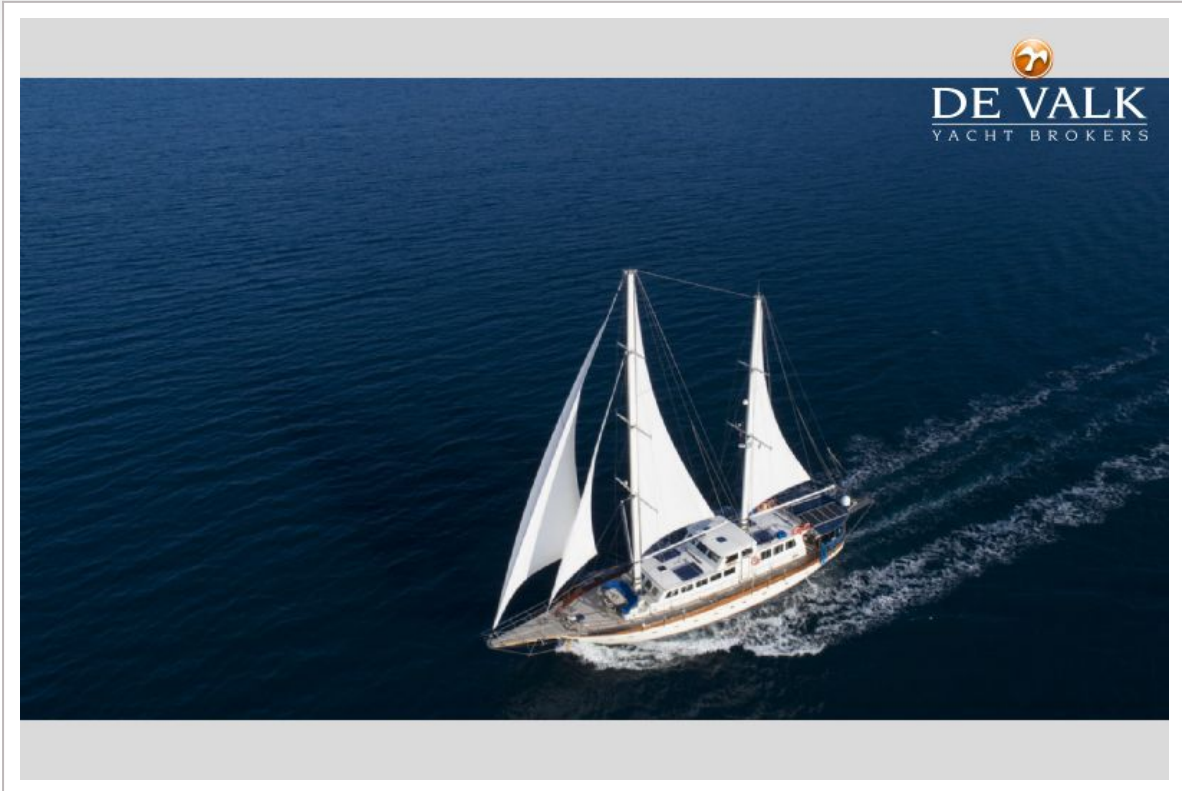
GULET 31 M.



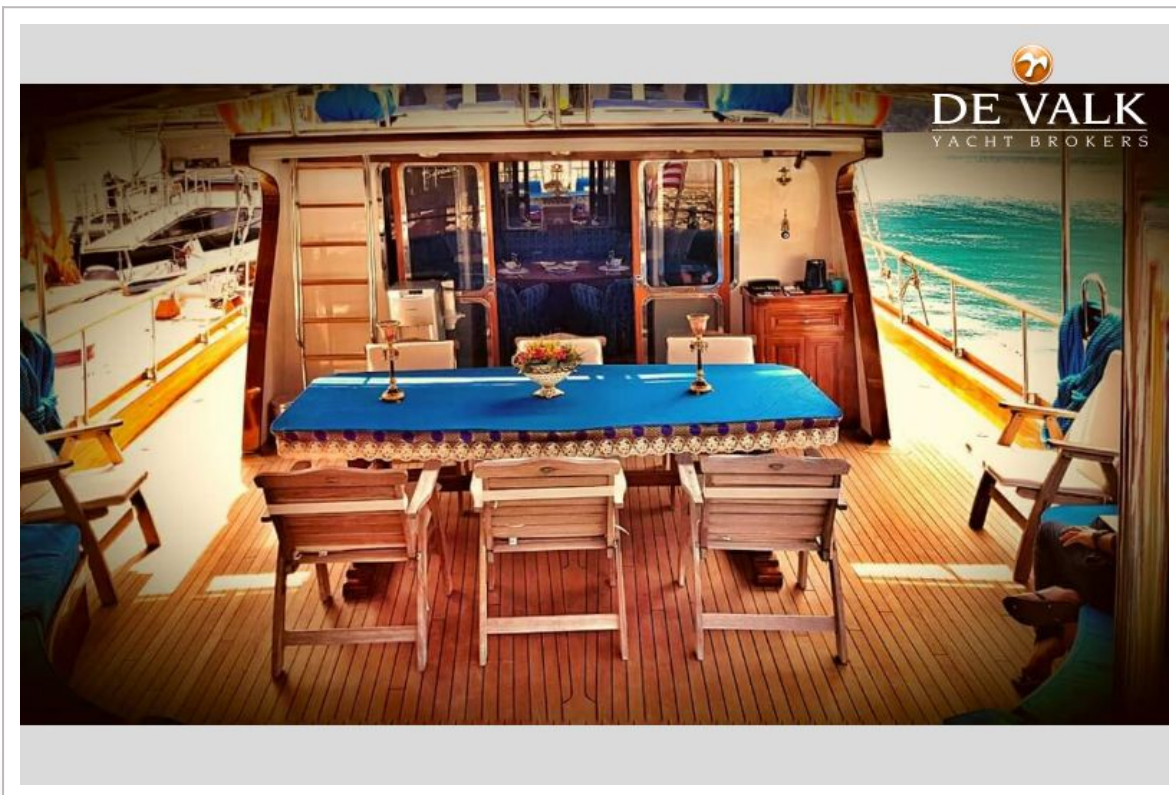
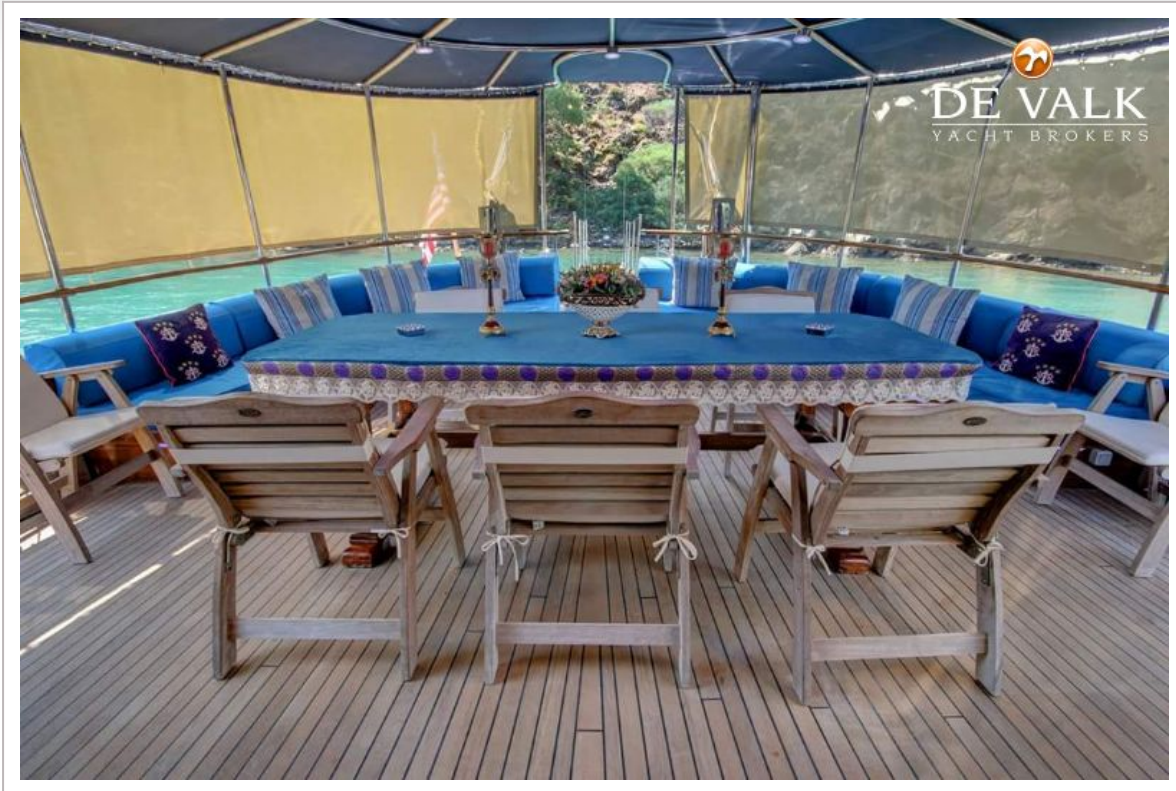
GULET 31 M.



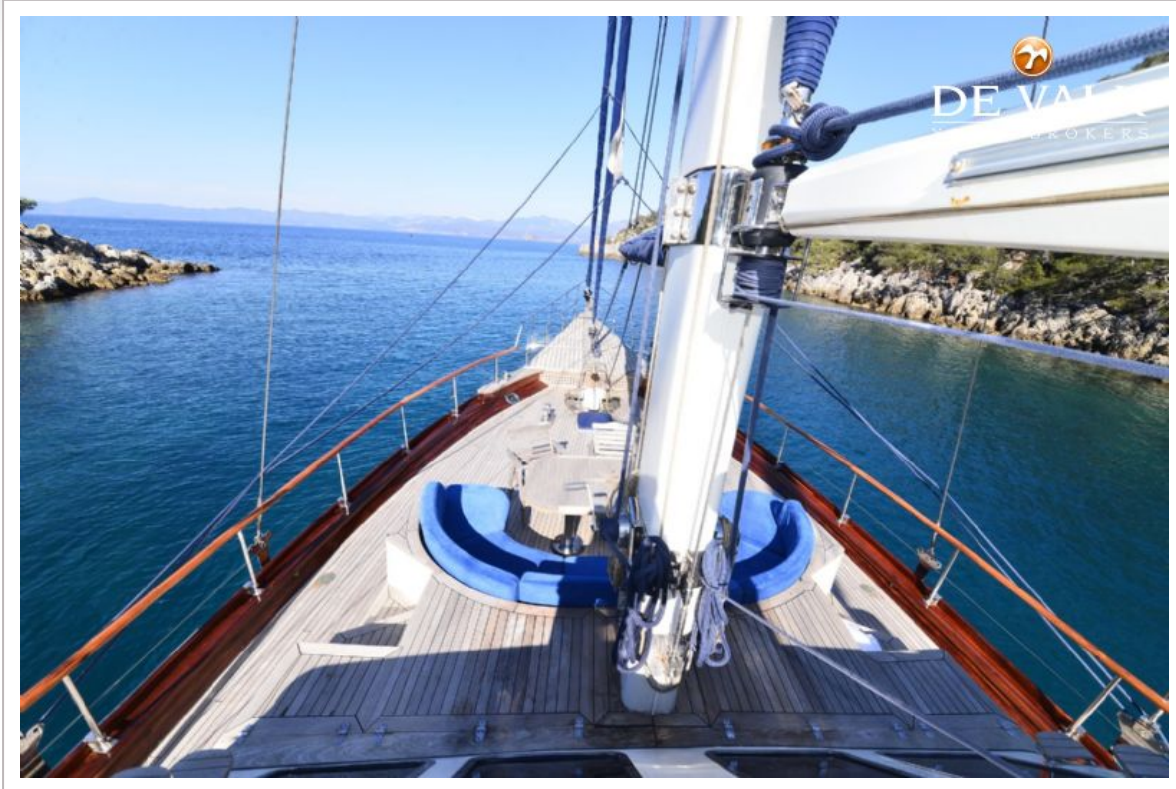
GULET 31 M.



GULET 31 M.



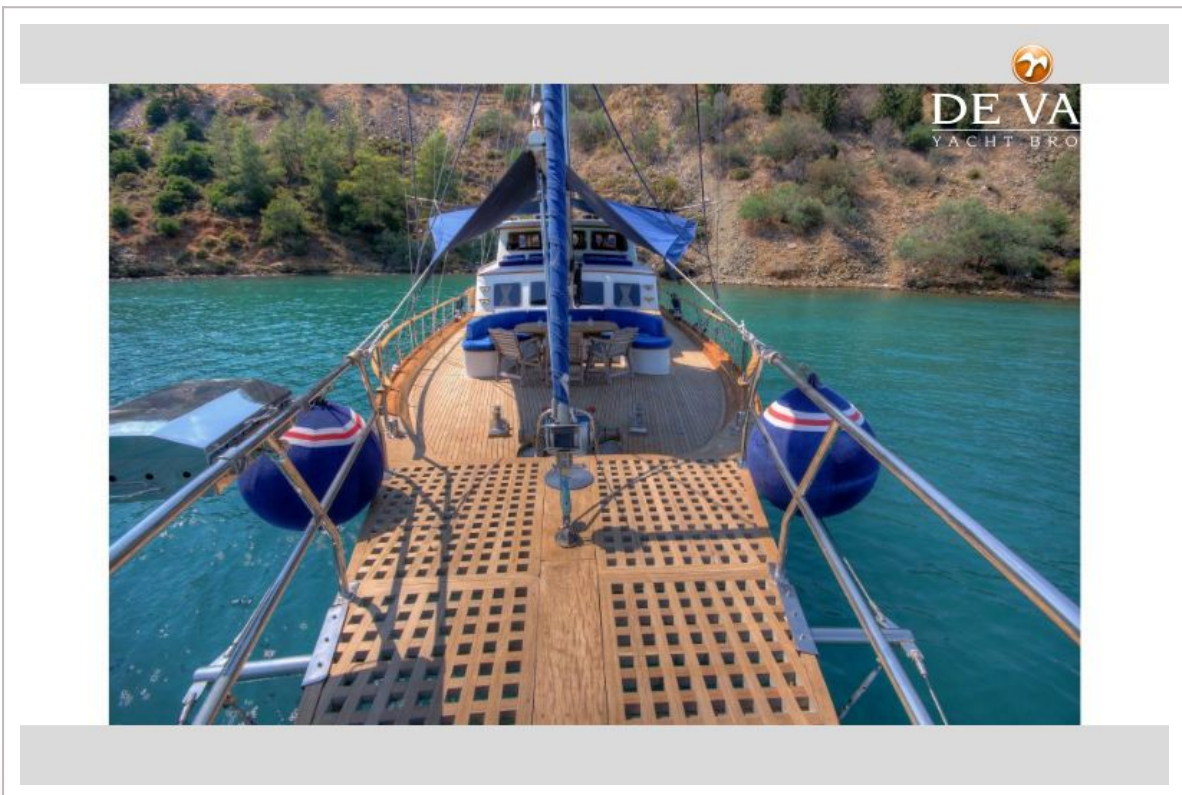
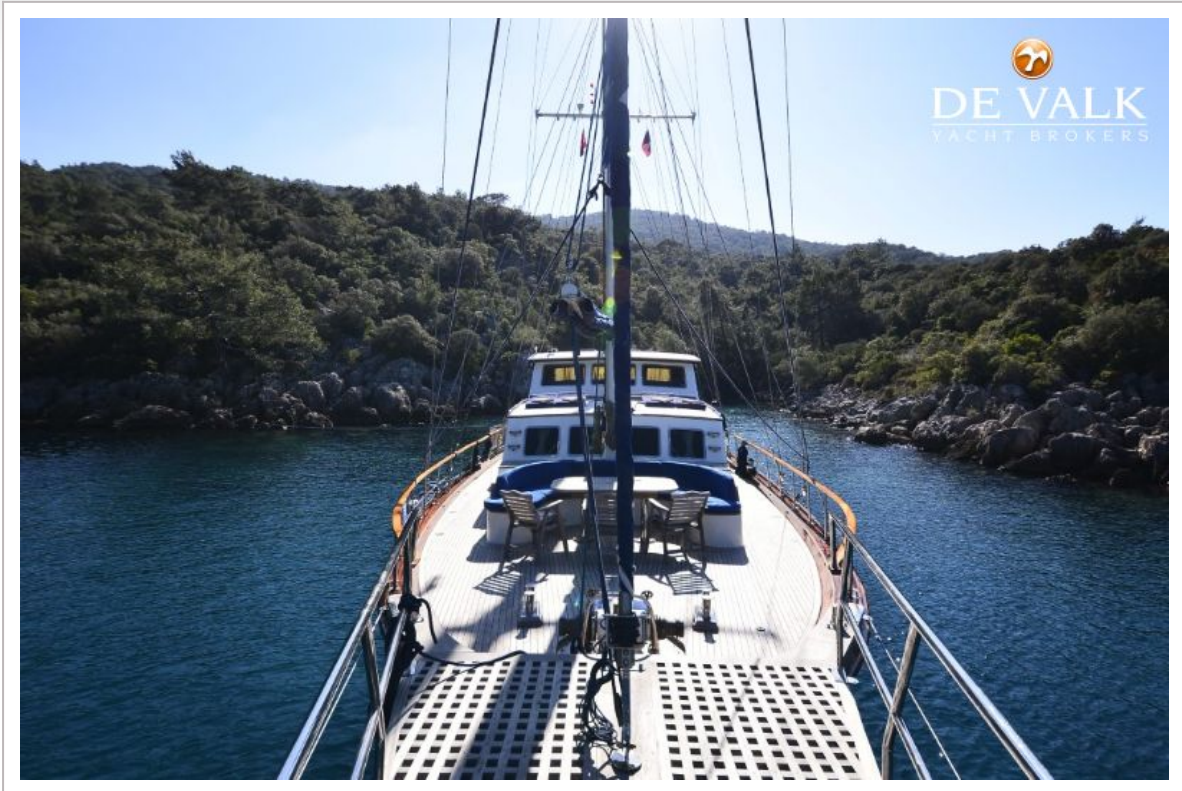
GULET 31 M.



GULET 31 M.



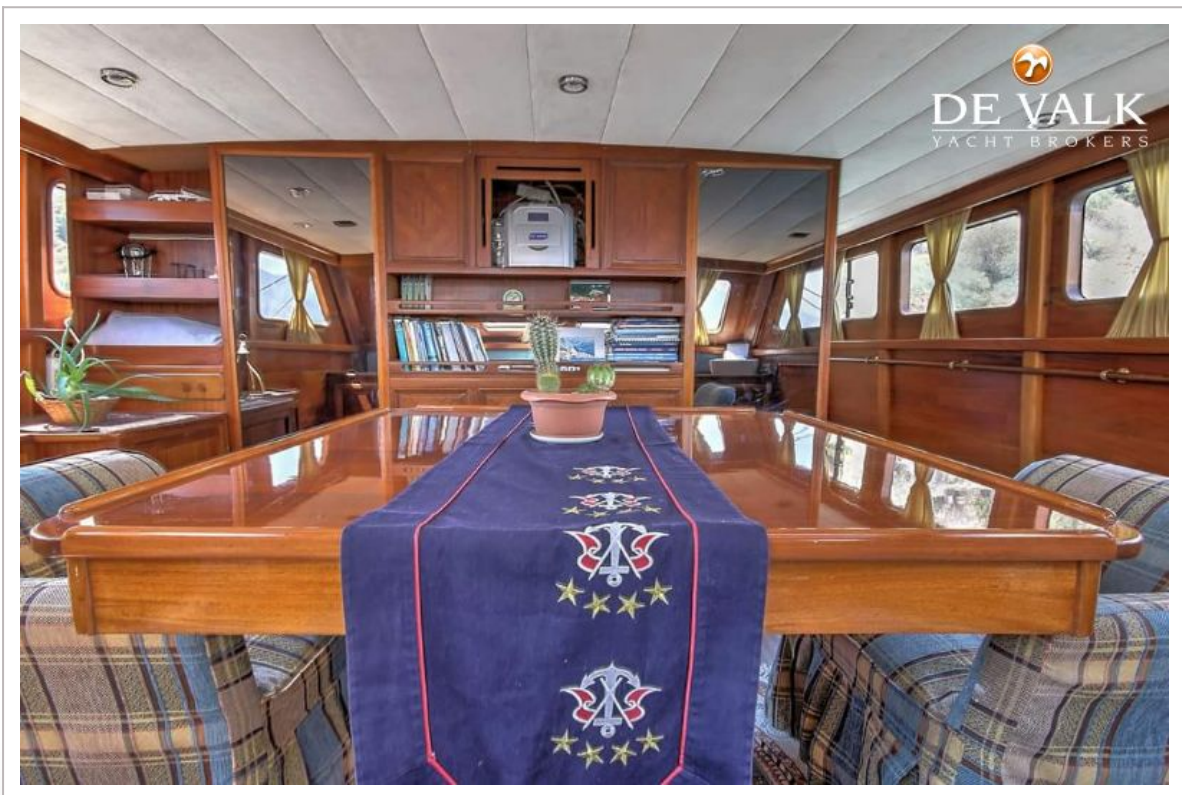
GULET 31 M.



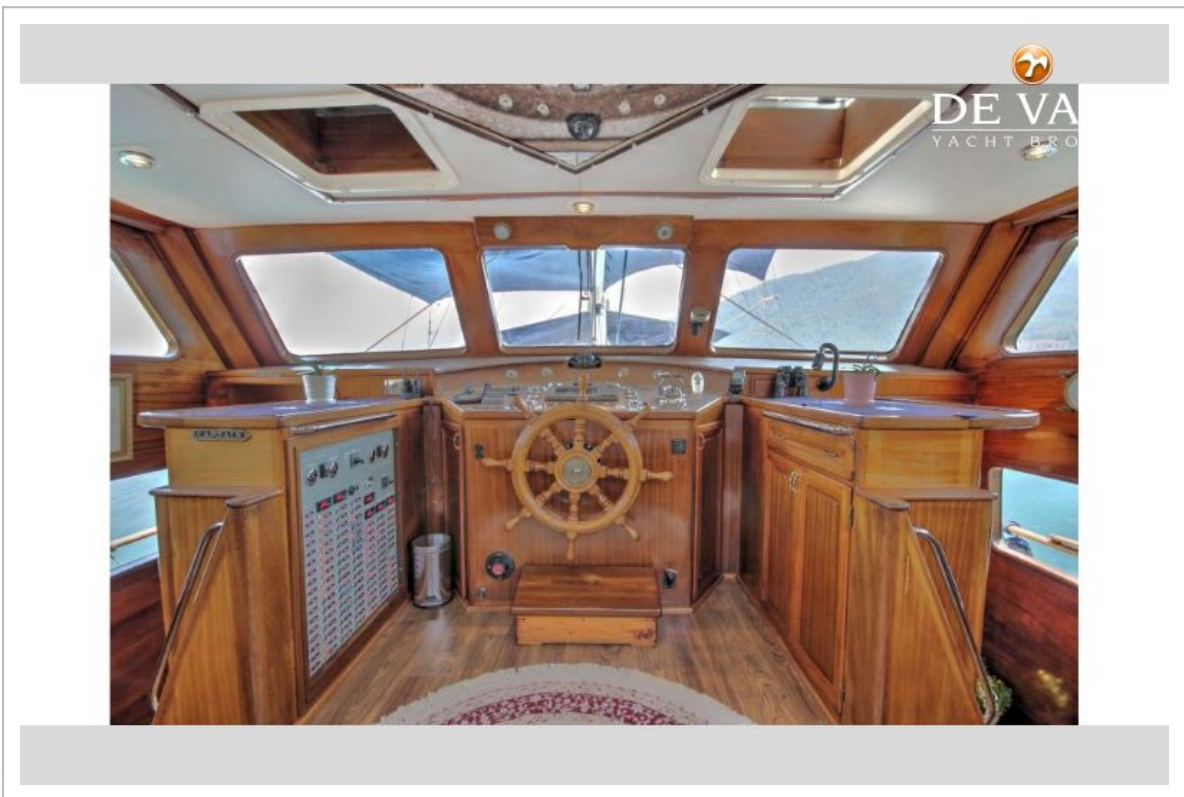
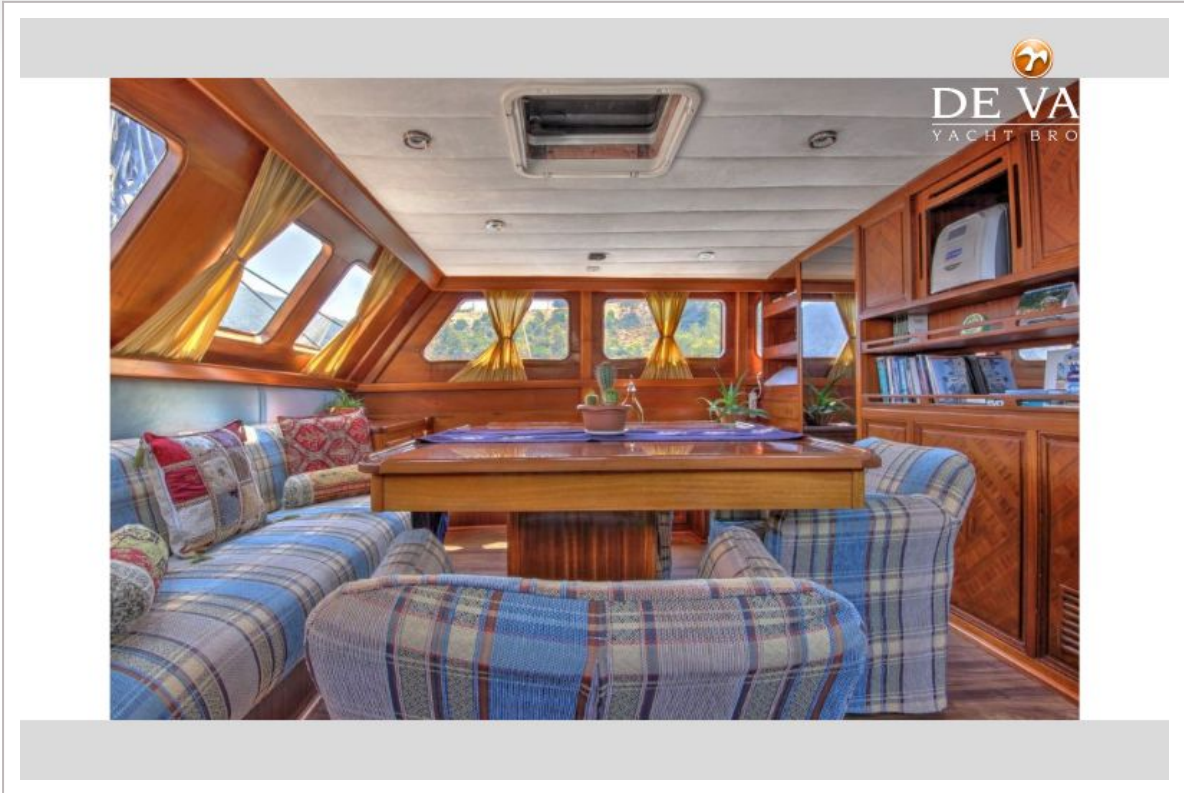
GULET 31 M.



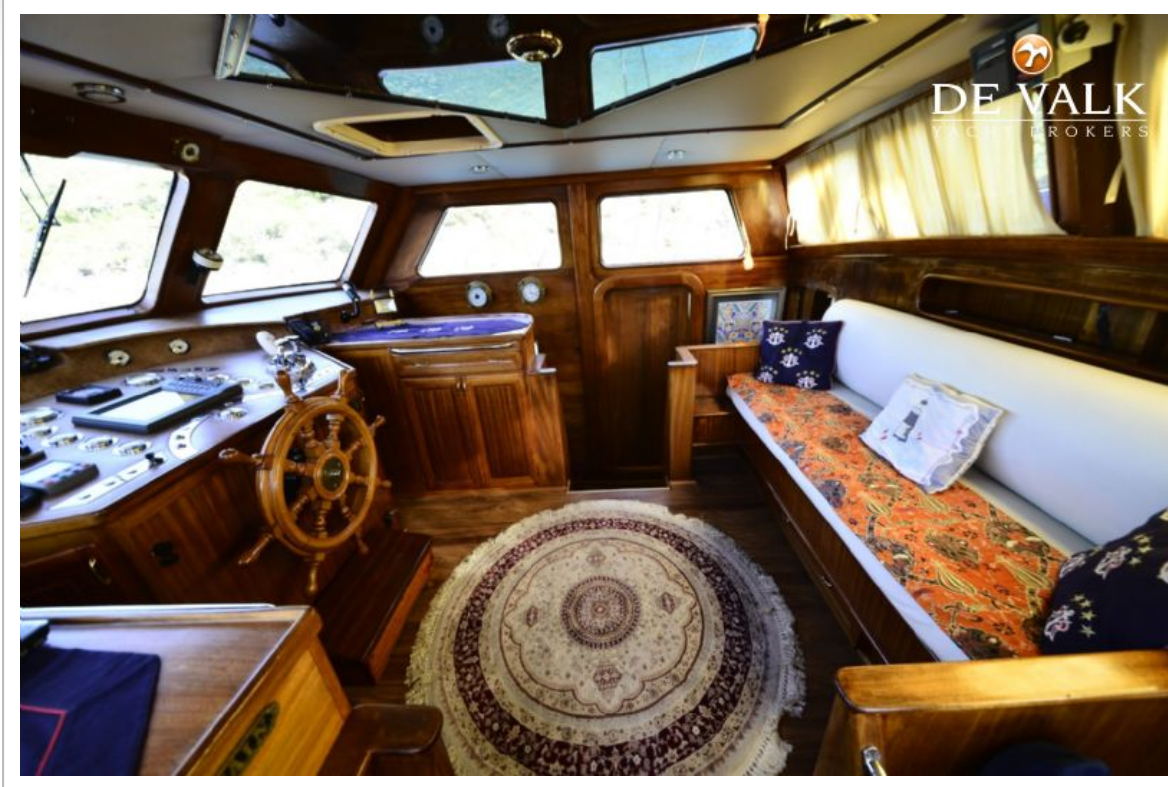
GULET 31 M.



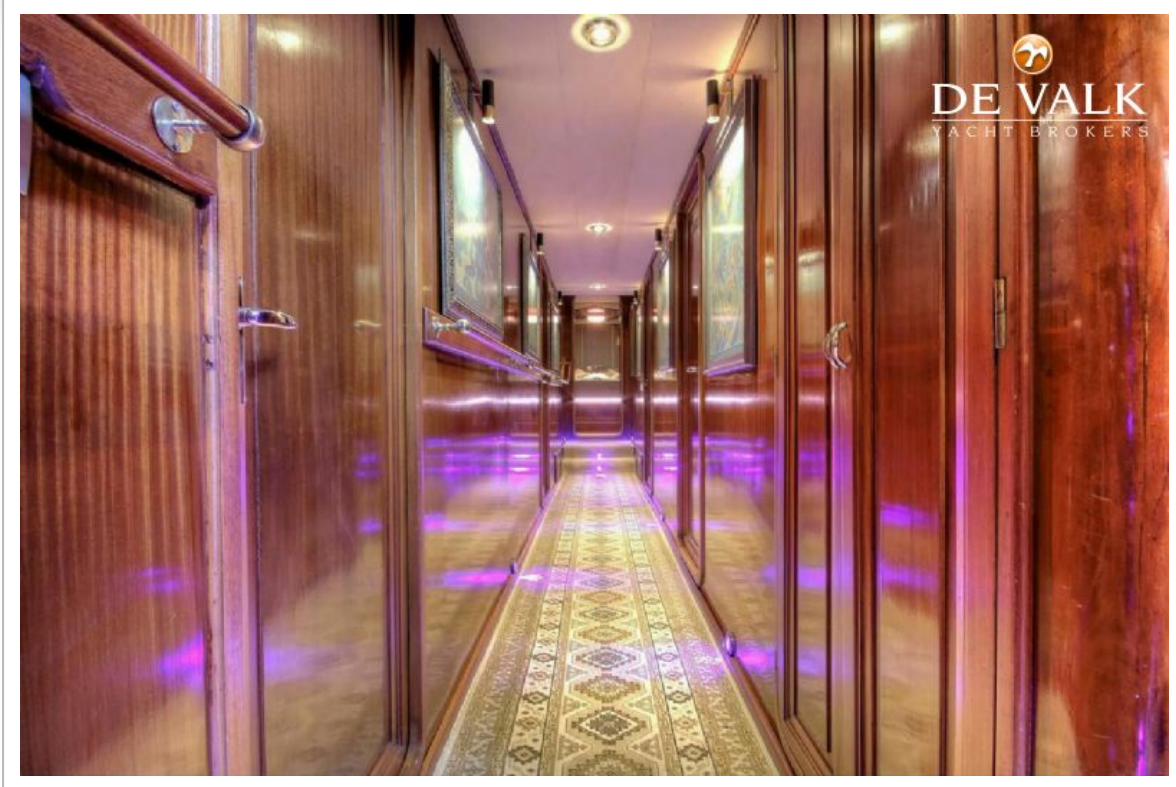
GULET 31 M.



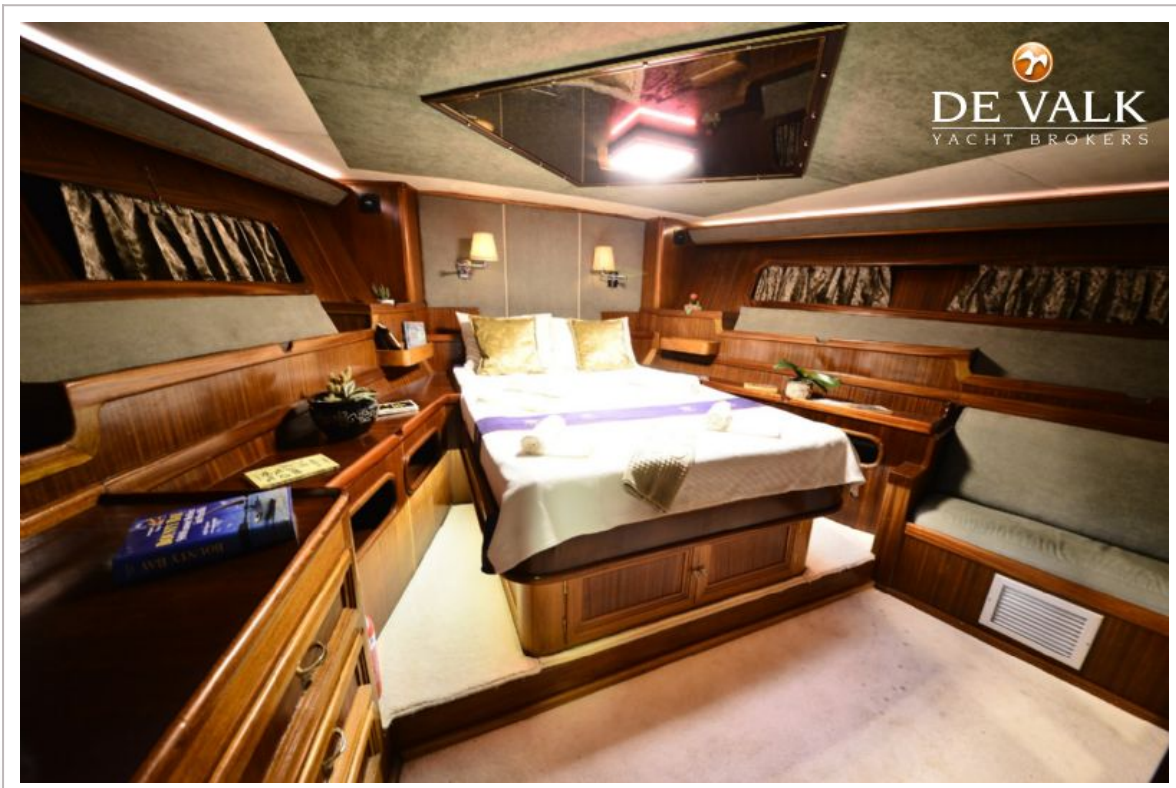
GULET 31 M.



GULET 31 M.



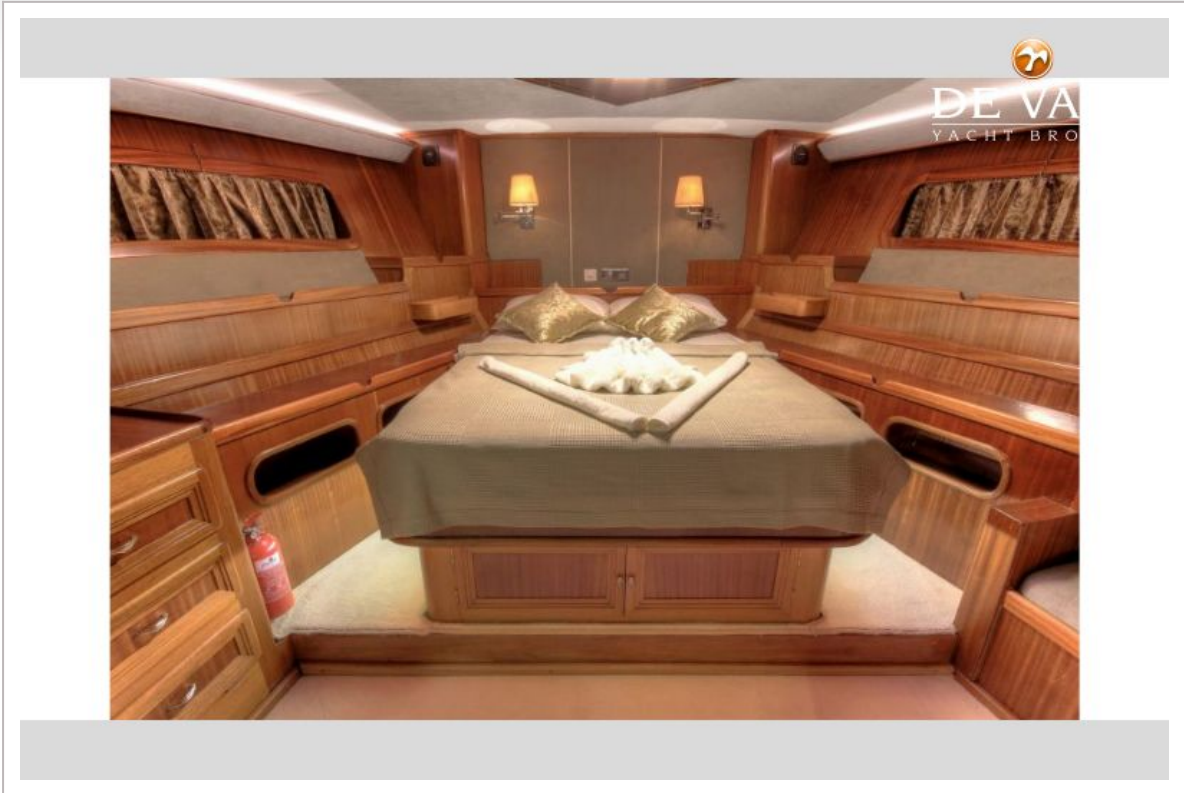

DE VALK
YACHT BROKERS



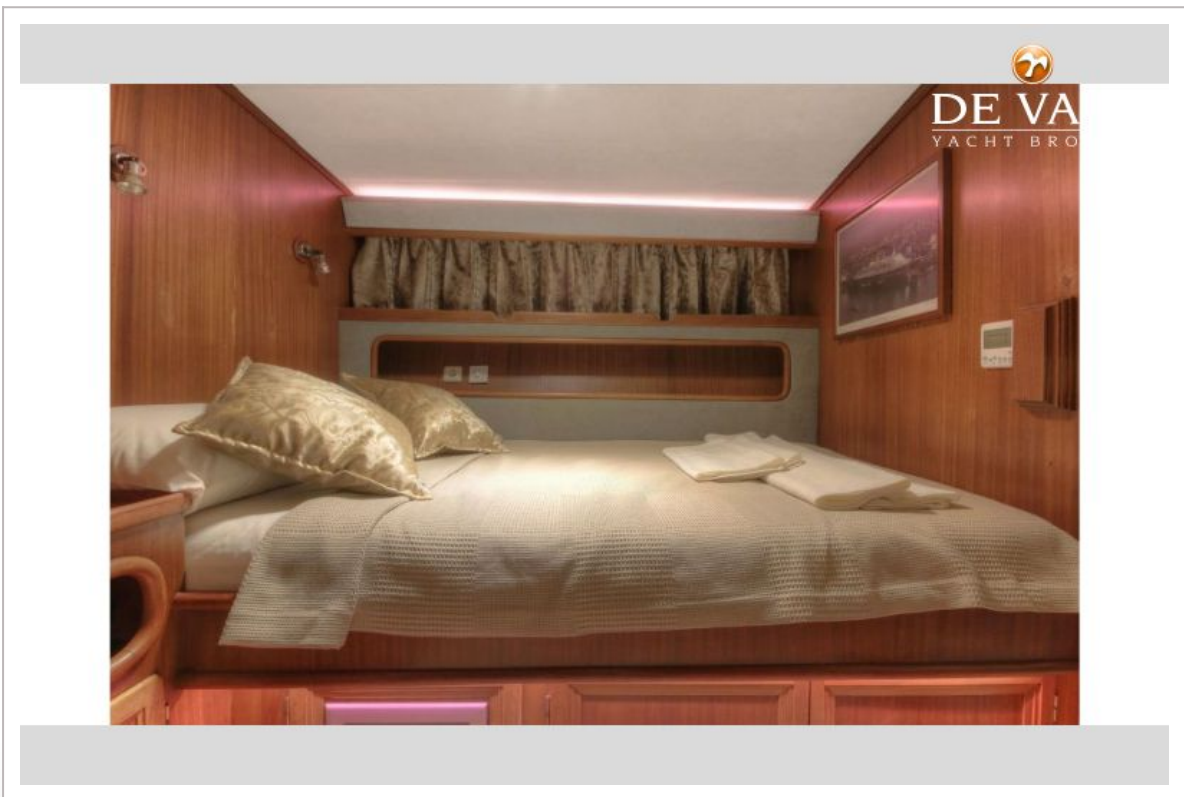
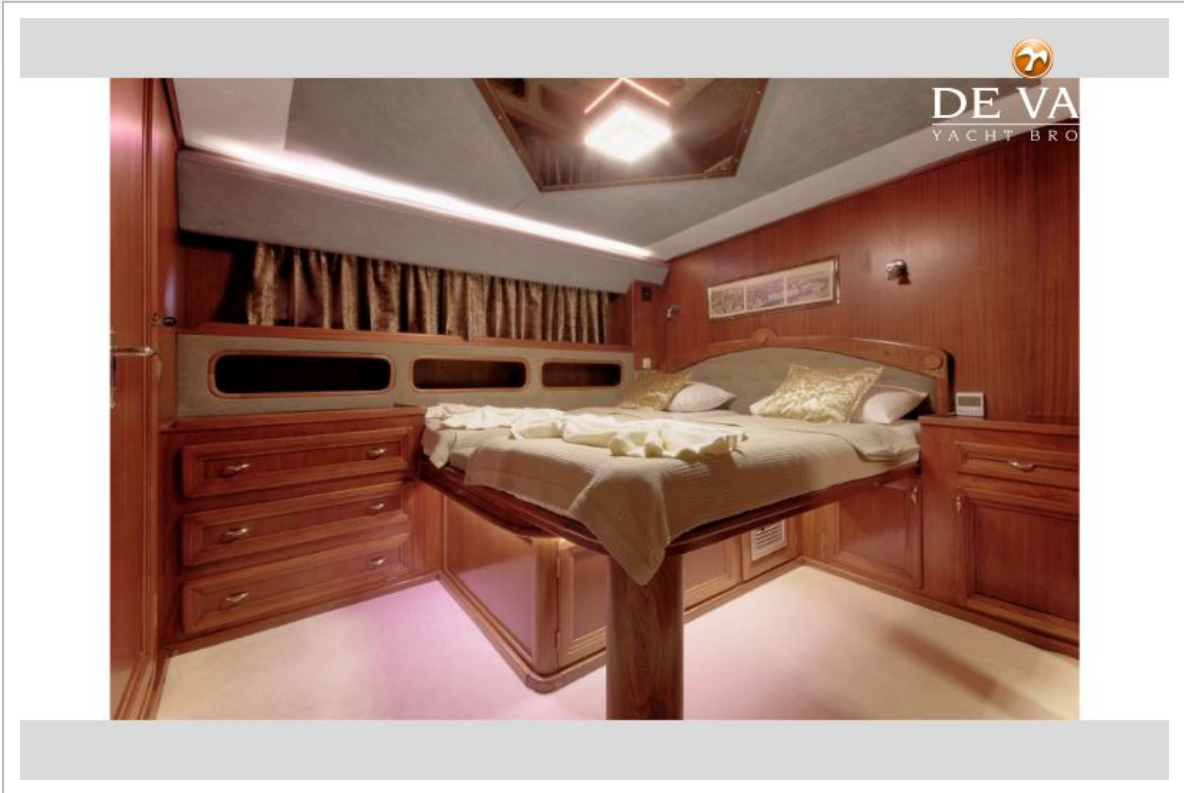

DE VALK
YACHT BROKERS



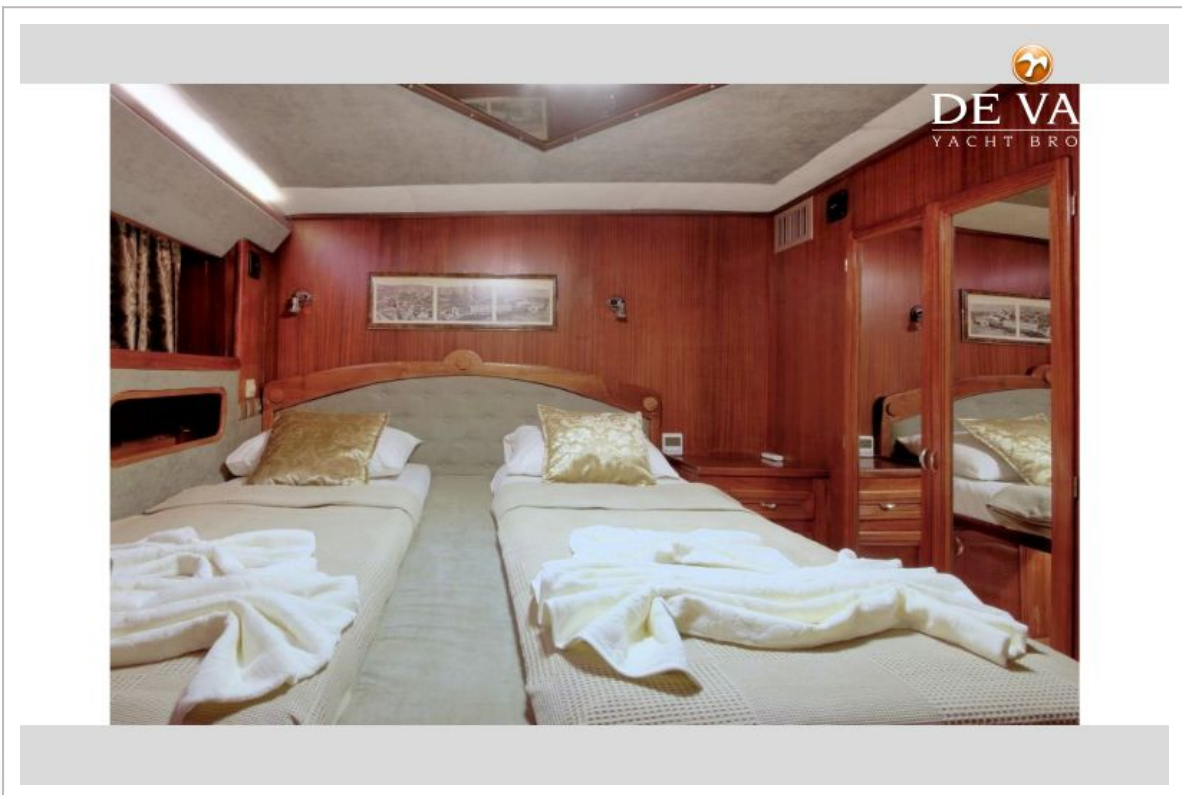
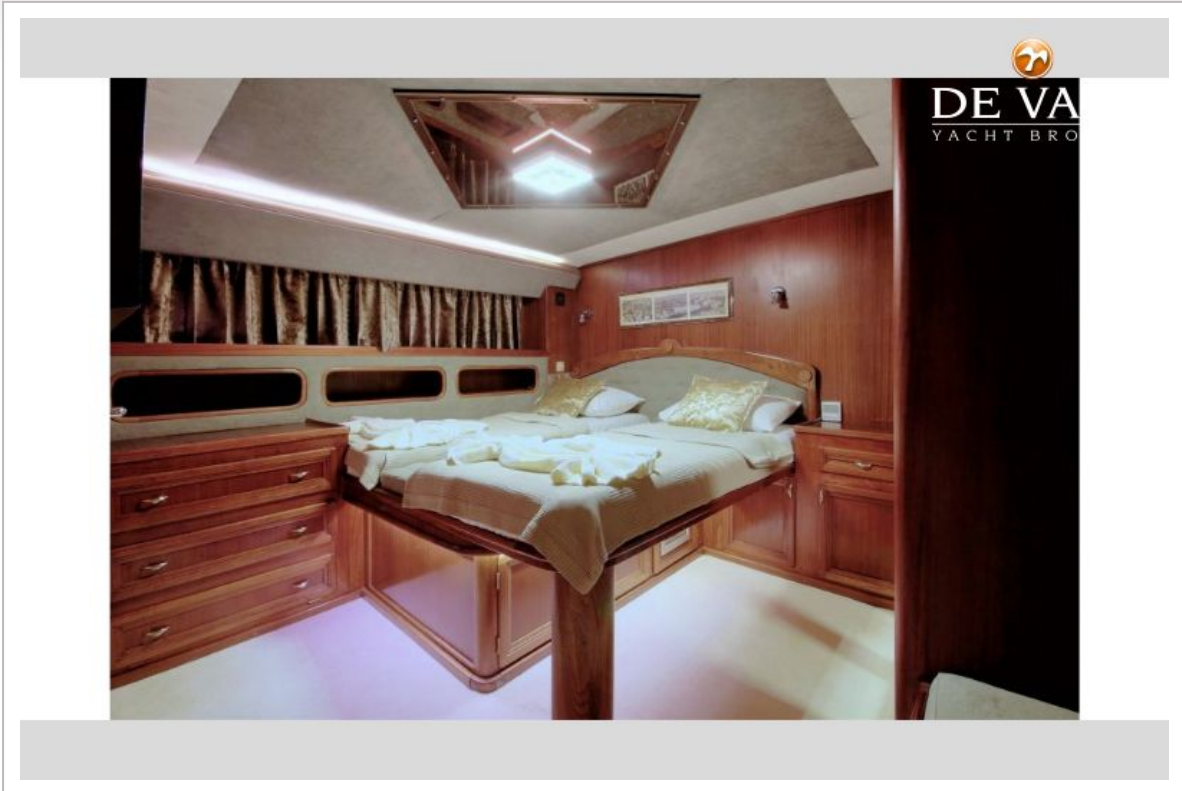
GULET 31 M.



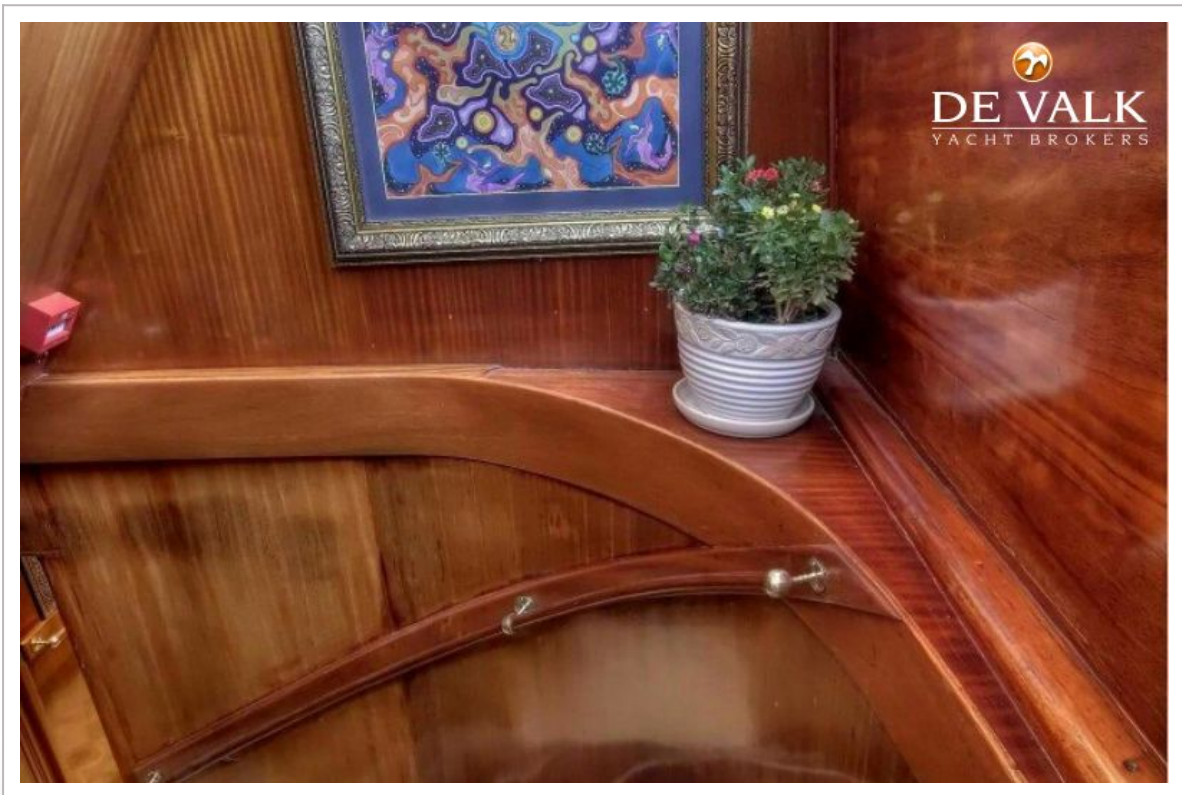
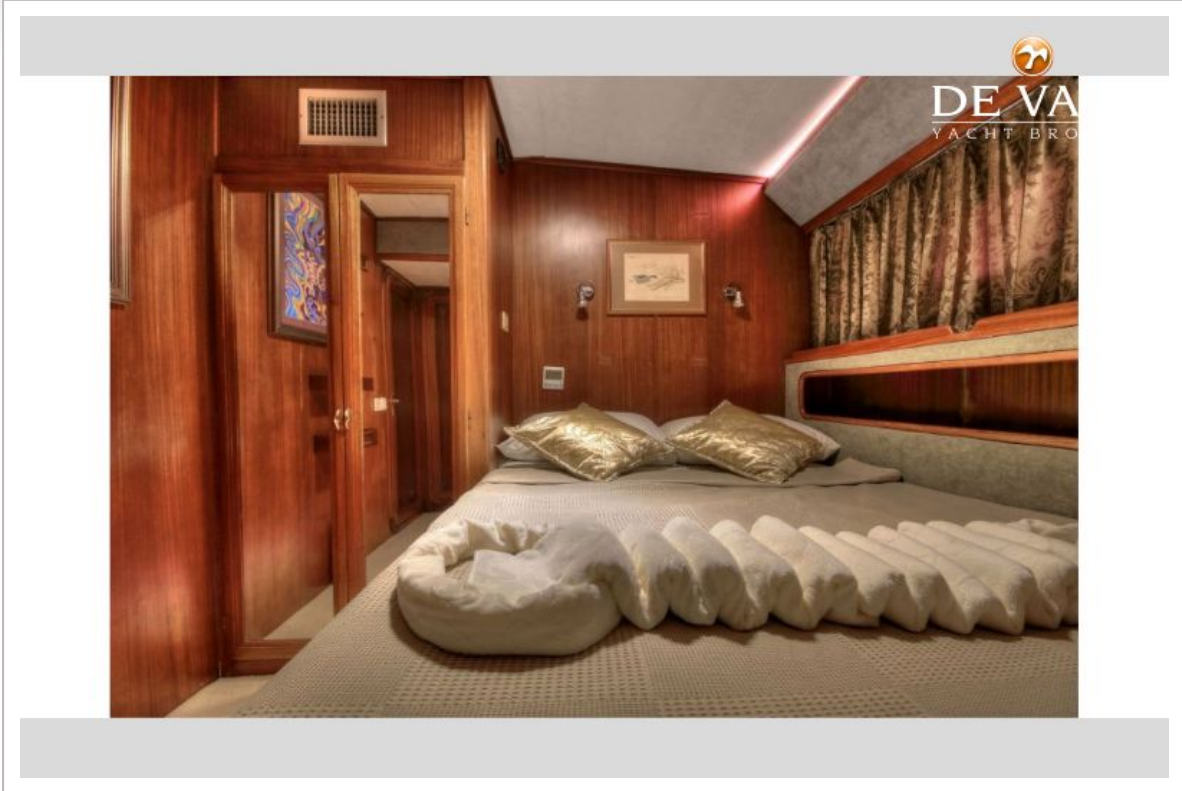
GULET 31 M.



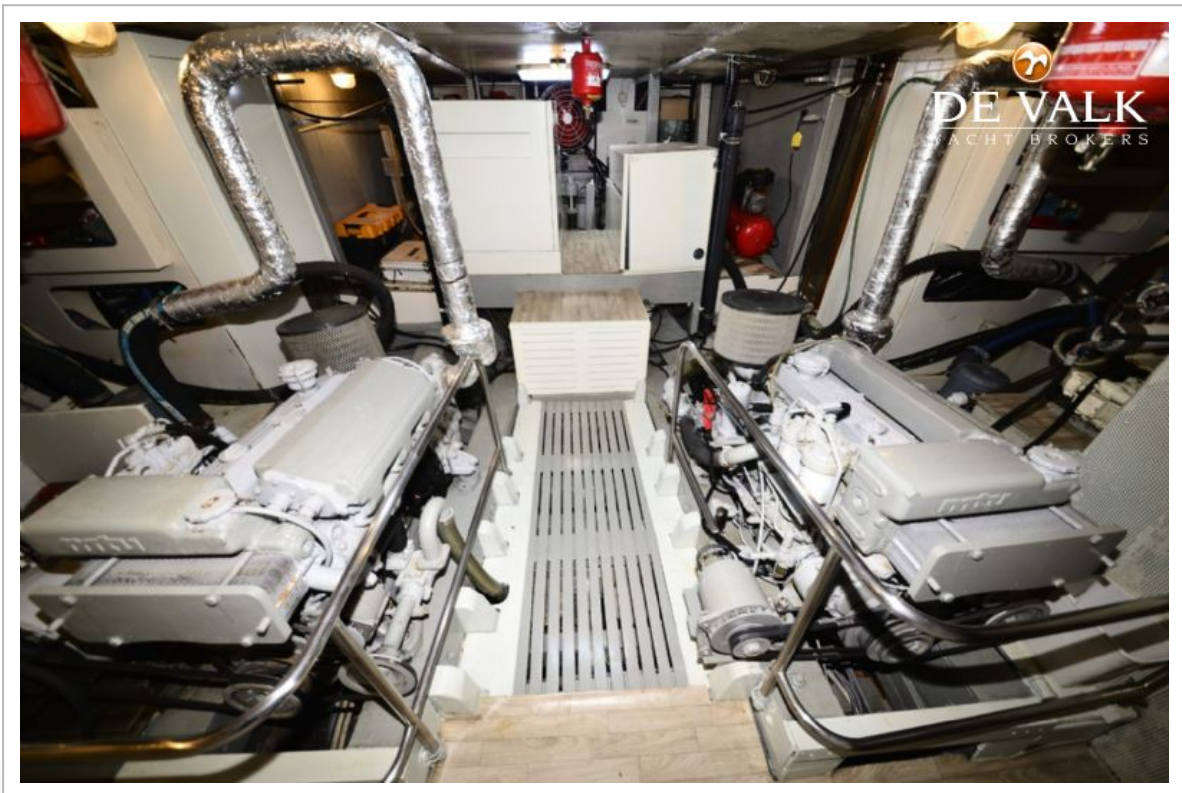
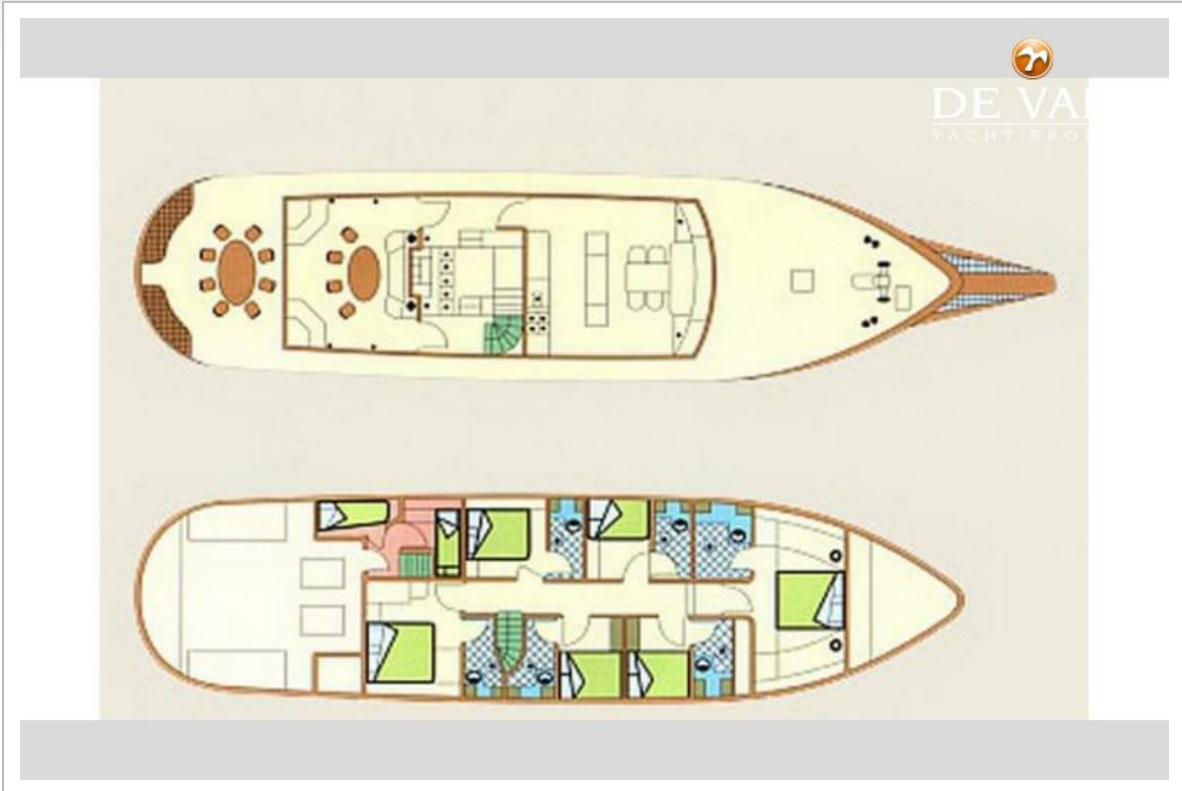
GULET 31 M.



GULET 31 M.



GULET 31 M.



GULET 31 M.



GULET 31 M.

