



DE VALK
YACHT BROKERS



VOLKERAK 46



DE VALK
YACHT BROKERS

BROKER'S COMMENTS

A very well taken care of Ketch, Motor-sailer with newly renovated centerboard, teak-deck, masts etc. Perfect to live onboard or stay long time. Cosy with Dickinson heater and well equipped. There is a very good documentation of the boat itself as well as all renovations and upgrades of the boat with photos and costs. Depth centreboard up/down 1.45/2.70

Per Engdahl

SPECIFICATIONS

Dimensions	14.00 x 4.00 x 1.45 (m)	Builder	Kuyper
Built	1984	Cabins	2
Material	Steel	Berths	5
Engine(s)	1 x Daf DD 575, 6 cyl diesel	Hp/Kw	105.00 (hp), 77.28 (kw)
Asking price	€ 199.000 (VAT Paid)	Lying	contact sales office

CONTACT

Sales office	De Valk Sweden	Telephone	+46 72 358 50 74
Address	385 98 Bergkvara SE	E-mail	sweden@devalk.nl

DISCLAIMER

These particulars are given in good faith as supplied but cannot be guaranteed.



GENERAL

Model	VOLKERAK 46
Type	motorsailer
LOA (m)	14,00
LWL (m)	12,35
Beam (m)	4,00
Draft (m)	1,45
Air draft (m)	16,50
Air draft min (m)	2,60
Headroom (m)	2,00
Year built	1984
Launched	1990
Builder	Kuyper
Country	The Netherlands
Designer	Ir. A. Volker
Displacement (t)	17
Ballast (tonnes)	Loodballast 4 tons Kielmidzwaard 1 ton
CE norm	A
Hull material	steel
Hull colour	White
Hull shape	Round bilge with keel. Depth with keel down is 2.70
Keel type	Centerboard corten steel. Restore 2020 New electric winch 2019.
Bilge keels	yes
Superstructure material	Steel
Deck material	Steel
Superstructure deck finish	Teak
Window frame	Windows Hora profile copper with insulated double glazing.
Deckhatch	Stainless steel.
Portholes	Portholes and light edges bronze. Wooden teak edges lacquered.
Insulation	Isolation under floor: X-trem foam sheets. Black polyethylene.
Fuel tank (litre)	Integrated in the bottom of the ship 500 litre



Fuel tank 2 (litre)	Integrated in the bottom of the ship 500 litre
Fuel daytank (litre)	Stainless steel 100 litre, 2019
Freshwater tank (litre)	2 x 460 litre
Blackwater tank (litre)	60 litre
Greywater tank (litre)	2 X 175 litre
Wheel steering	Steering wheels, made by Stazo teak.
Inside helm position	yes
Outside helm position	Treated with Epifanes hardwood oil varnish.
More info on hull	Hull, superstructure and cockpit completely painted 2022

ACCOMMODATION

Cabins	2
Berths	5
Pilot house/deck saloon	yes
Heating	Dickinson Antarctic, oil heater. 4 Radiators
Heating 2	Eberspächer, (2018) airtronic. January 2022 new engine installed
Chart table	yes
Aft Cabin	yes
Galley	yes
Countertop	yes
Sink	yes
Cooker	Four-burner (Ikea), type NUTID, 230 volt (2011) Induction.
Oven	Oven: new 2025 Wilfa 3 in 1: oven, air fryer and microwave
Fridge	Refrigerator with separate compressor, Vittrifigo, 24 volts
Freezer	Fridge 45 watt, 130 liters incl. freezer compartment (2019)
Hot water system	Boiler Isotemp, inhoud 30 liter, 1000 watt
Water pressure system	yes
Hot water tap	yes
Coffee maker	Quick Mill 0820 Espresso Machine. (2018)
Owners cabin	New Flexima mattress with topper.
Wardrobe	yes



Bathroom	yes
Toilet system	PAR, automatic water system pump, 31395-0294, 24 volt
Wash basin	yes
Shower	yes
Guest cabin 1	Aft: Froli Bed system plus topper
Wardrobe	yes
Toilet system	yes
Wash basin	yes
Shower	yes
Extra info	Heating: 3 Mill electric panel heaters. 2022 and 2024
Washing machine	Candy washingmachine. New 2023.
Extra info	More detailed info in separate document

MACHINERY

No of engines	1
Make	Daf
Type	DD 575, 6 cyl
HP	105
kW	77.28
Fuel	diesel
Year installed	1990
Year of overhaul	Spring 2018 Engine maintenance 2020 and 2022 Engine maintenance
Maximum speed (kn)	8.5 knots
Cruising speed (kn)	6
Drive	shaft
Shaft seal	Grease-lubricated propeller shaft: Shaft: renovated in 2022
Bowthruster	Vetus, 220 kgf, type BoW22024, 24 volts, diameter 300 mm.
Propeller type	Fixed
Propeller blades	3 blades
Manual bilge pump	yes



Electric bilge pump	yes
Generator	Mobiele generator: Honda EU 22i, serie nr 31798 (2019), 2.2 kw
Batteries	2 New in 2020
Start battery	yes
Service battery	New in 2023
Bowthruster battery	New in 2020
Battery monitor	Victron Battery Monitor BMV 602 Victron Color-Control GX Monito
Battery charger	Victron Skylla 24/50, input 110/220/240 volt. output 24 volt 50A
Battery charger/inverter	Victron Quattro 5000 (2009), lader & omvormer
Solar panel	Sunware. New in 2023
Shorepower	yes
Insulation transformer	Victron Isolation transformer, 3600 watt. Nieuw 2024.
Extra info	Internet. • Teltonika Wifi, router, type RUT 955 LTE. 2018
Extra info	Alfa Tube 2H Wifi antenna mizzen mast 2018.

NAVIGATION

Compass	Cestrel Moore Compass
Electric compass	Raymarine SPX-30 core pack with fluxgate compass and rudder pos
Windset	Raymarine triducer (2019): Windvaan: E22078
Repeater	Raymarine triducer (2019): Display. I70s. 2 times E30327
VHF	VHF, sailor, type RT 144
Autopilot	Raymarine autopilot. Type 2 24V Pump. 2021
Rudder angle indicator	VDO. Doesn't work. However, page made on autopilot display
Radar	Raymarine autopilot. Type 2 24V Pump. 2021
Plotter	Raymarine plotter (2018). ES series eS75 MFD Wifi. E70263
Wifi antenna	Alfa Tube 2H Wifi antenna mizzen mast 2018.
AIS receiver	True Heading. AIS CTRX Class B Responder. TRU2494 2009. Main swi
AIS transceiver	True Heading. AIS CTRX Class B Responder. TRU2494 2009.
Navigation lights	yes



Extra info	SSB radio Kenwood R-5000 nr 8020322, AC 120/220/240 volts, dc 12
Extra info	Remote Controller autopilot. S100 E15024

EQUIPMENT

Sun awning	yes
Anchor	Rocna 33kg. 2022.
Anchor chain	50 meters of chain laid out, checked and 10 meters of indication
Dinghy	Dinghy Nimarine RIB 310 2018
Outboard	Electric. Torqueedo 1003 2018
Davits	yes
Davits controls	yes
Pushpit	yes
Pulpit	yes
Life raft	SeaSafe 6 people,
Life raft (pers)	6
Last life raft survey	2021
Lifejackets	4
Lifebuoy	Round orange hard lifebuoy
Safety lines on deck	Lifesling
Wiper	Marin Windshield Wiper. Port front
Fenders	yes
Mooring lines	yes
TV	yes
Fire extinguisher	2 fire extinguishers, approved
Auto extinguisher system	2 times Fire Suppression Systems. 25 sec. and 50 seconds.
Extra info	Carbon monoxide detector Kidde 5CO

RIGGING

Rigging	Masts Oregon pine, renovated 2019. 2022: 3 new coats of lacquer
---------	---



Standing rigging	Stainless steel, main rigging 10 mm, bottom rigging 8 mm Miz 7m
Mainsail	Brown dacron 31,5 m ²
Mainsail cover	yes
Mizzen	Brown dacron 13.5 m ²
Mizzen sailcover	yes
Jib	Brown dacron 12 m ²
Genoa furler	2024 Riggmaster Furler system from Facnor.
Genoa cover	yes
Booster	Red and white halfwinder 95 m ²
Yankee	Brown dacron 37 m ²
Trysail	8.0 m ² oranje dacron
Stormjib	8.0 m ² oranje dacron
Genoa sheetwinches	Barbarossa ST bronze, four pieces
Halyard winches	Bronze, four pieces
Reefing winch	Barbarossa bronze, three pieces
Extra info	Winch for keel centerboard:Warn, type RT30, 24 volt DC (2019)

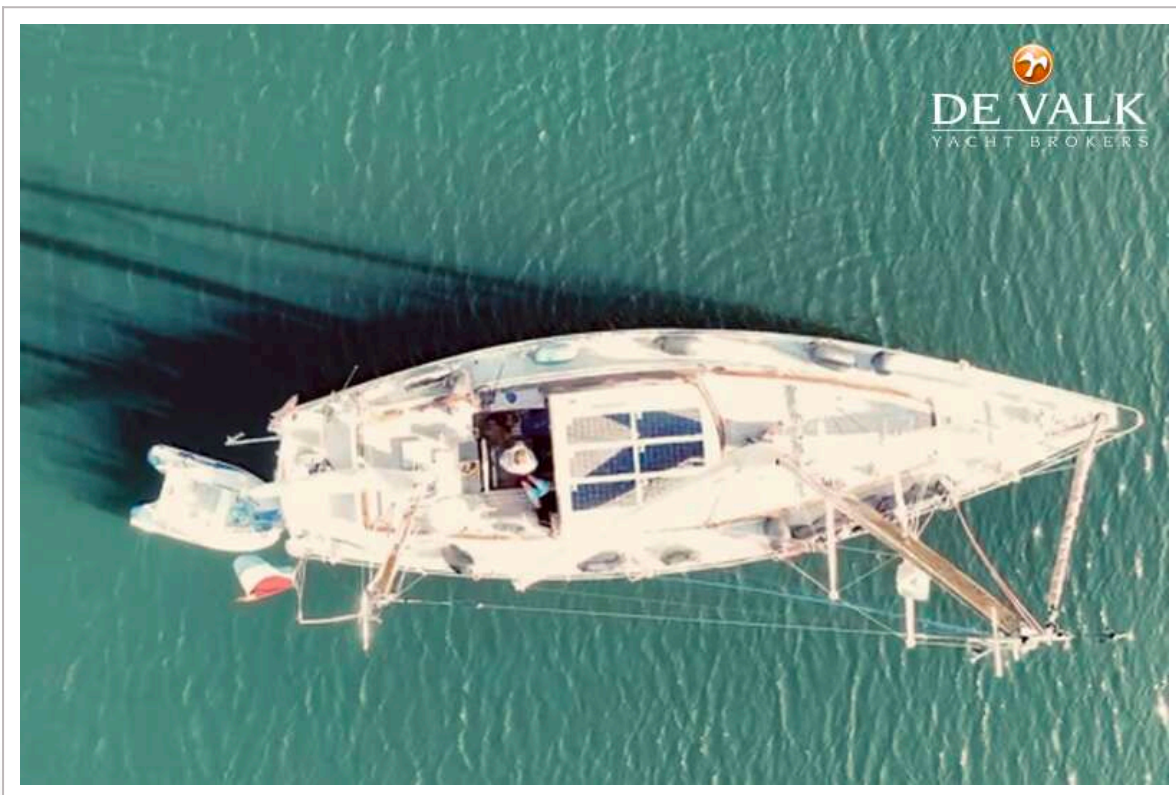


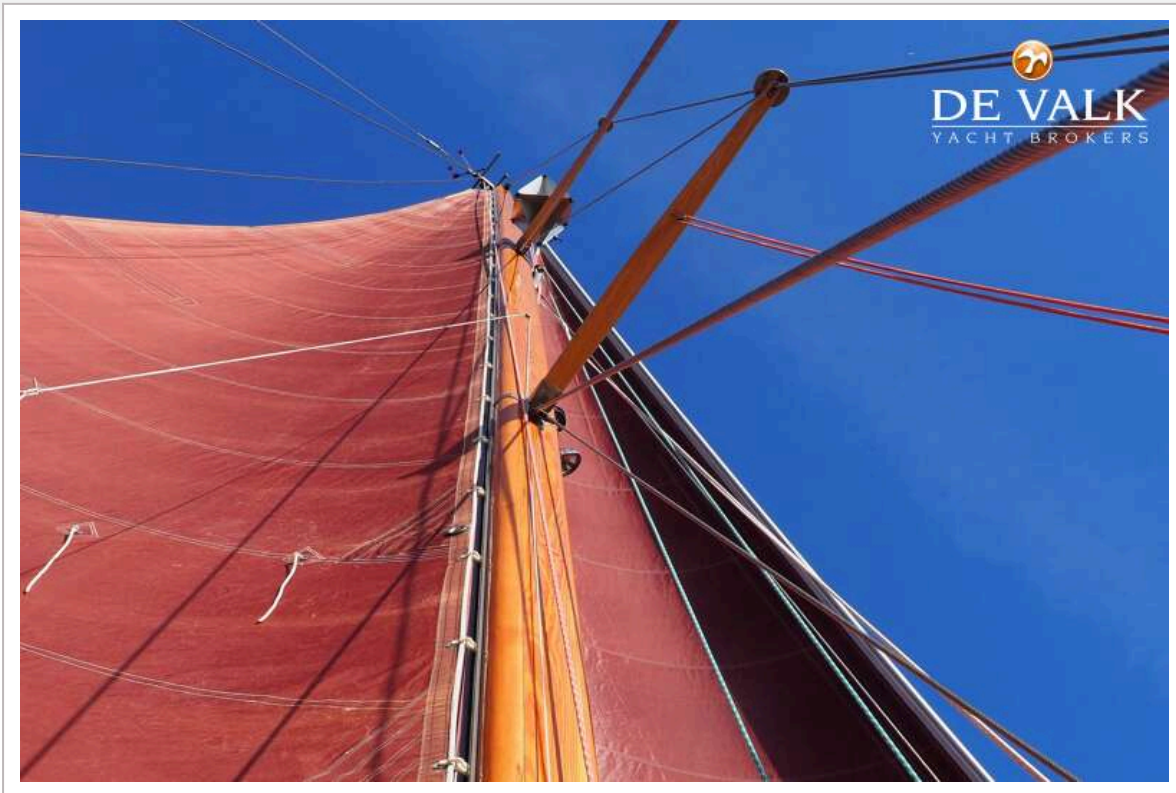
VOLKERAK 46





VOLKERAK 46

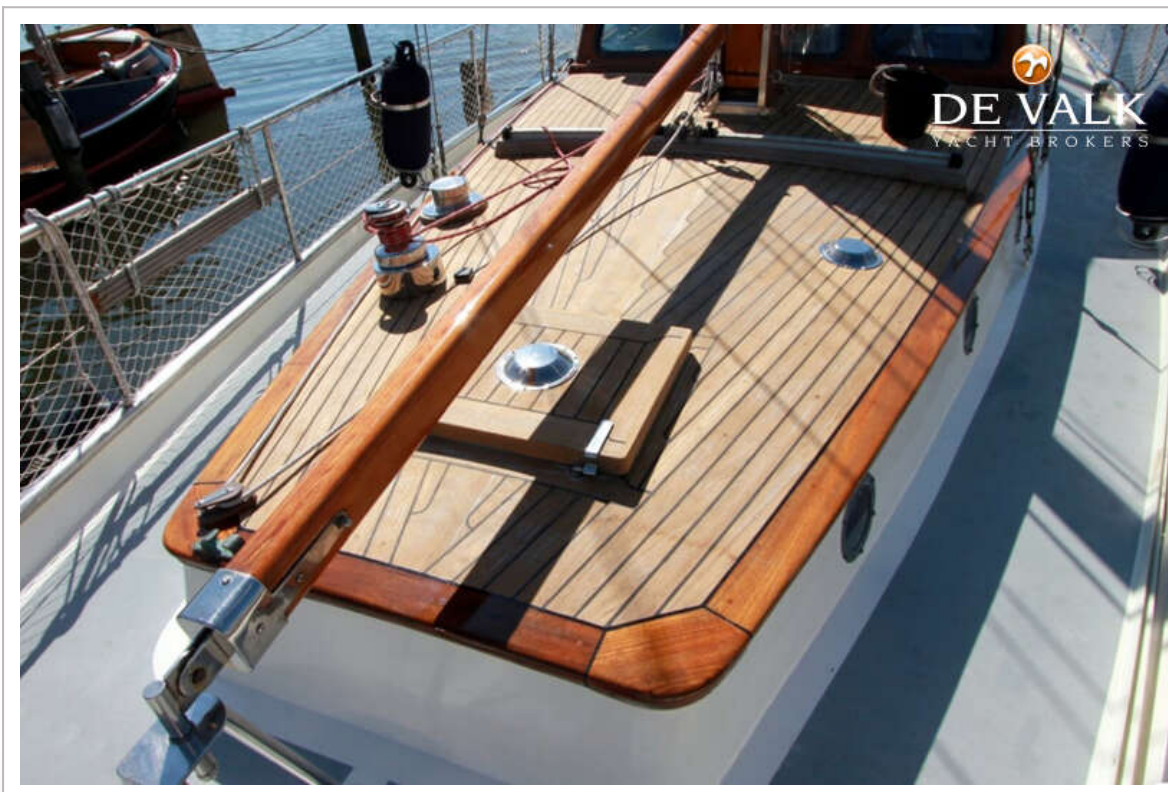




VOLKERAK 46



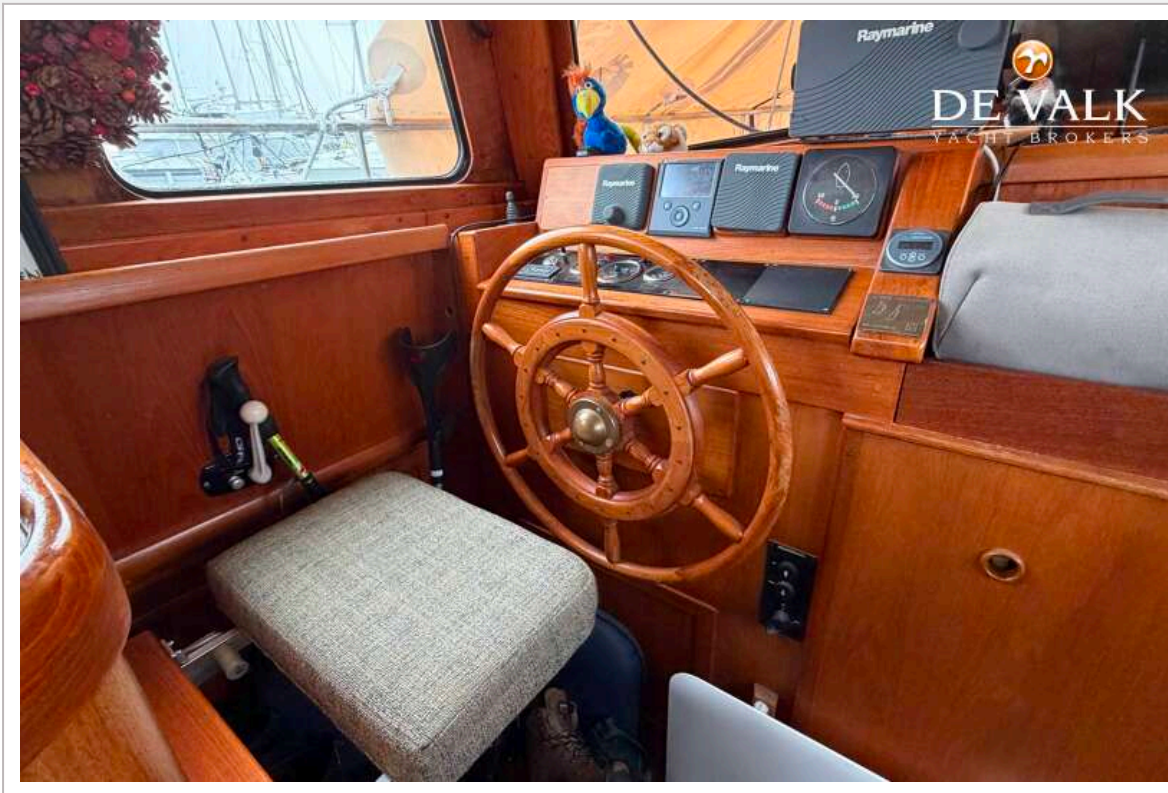
VOLKERAK 46



VOLKERAK 46

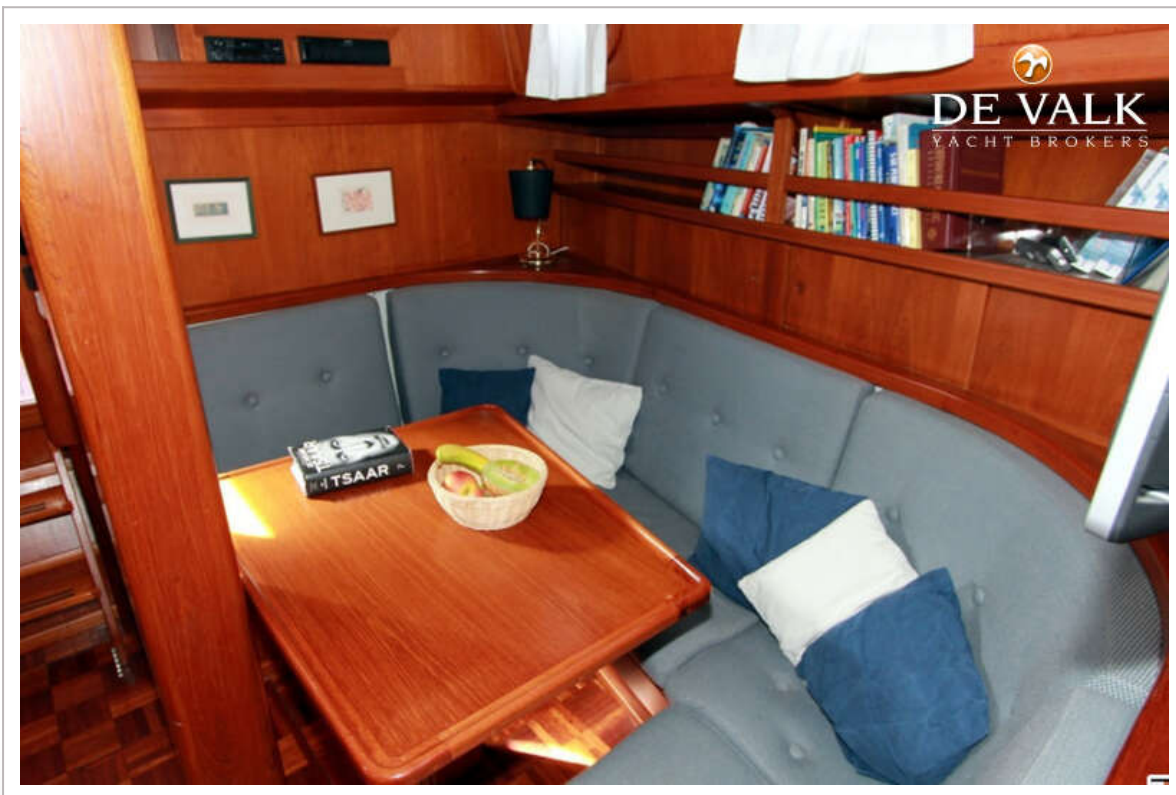
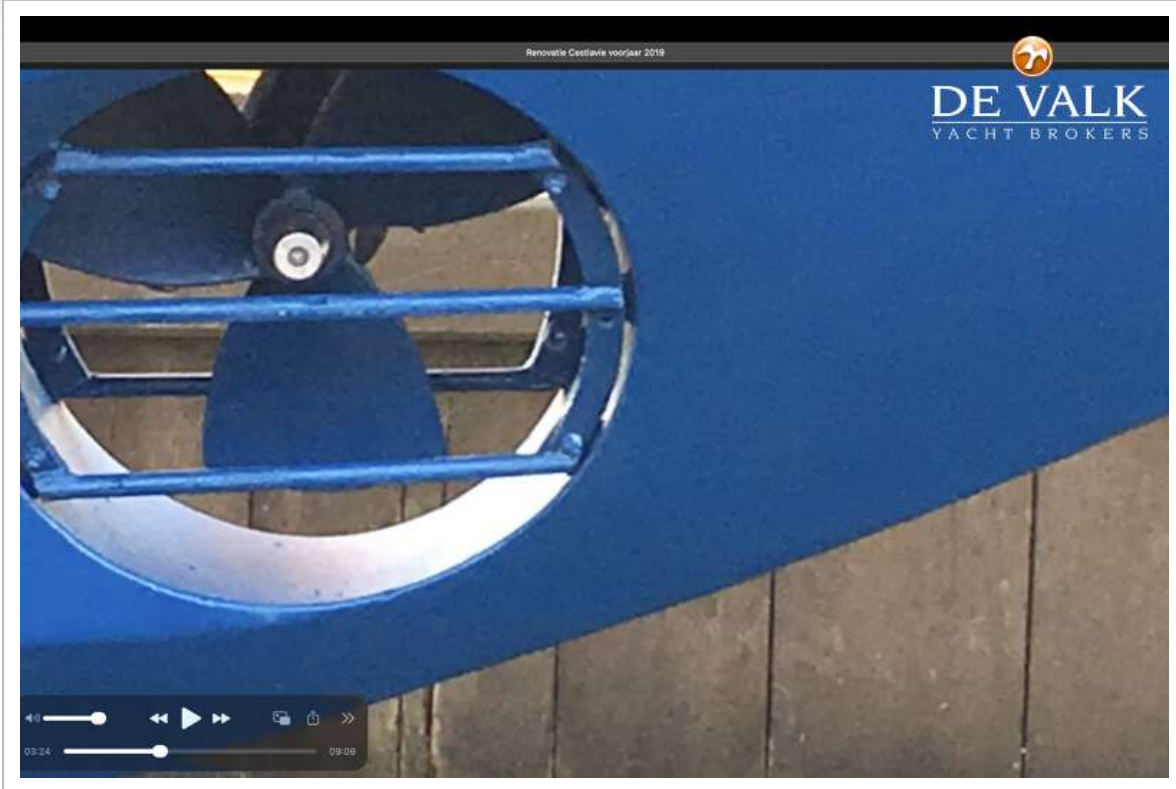


VOLKERAK 46

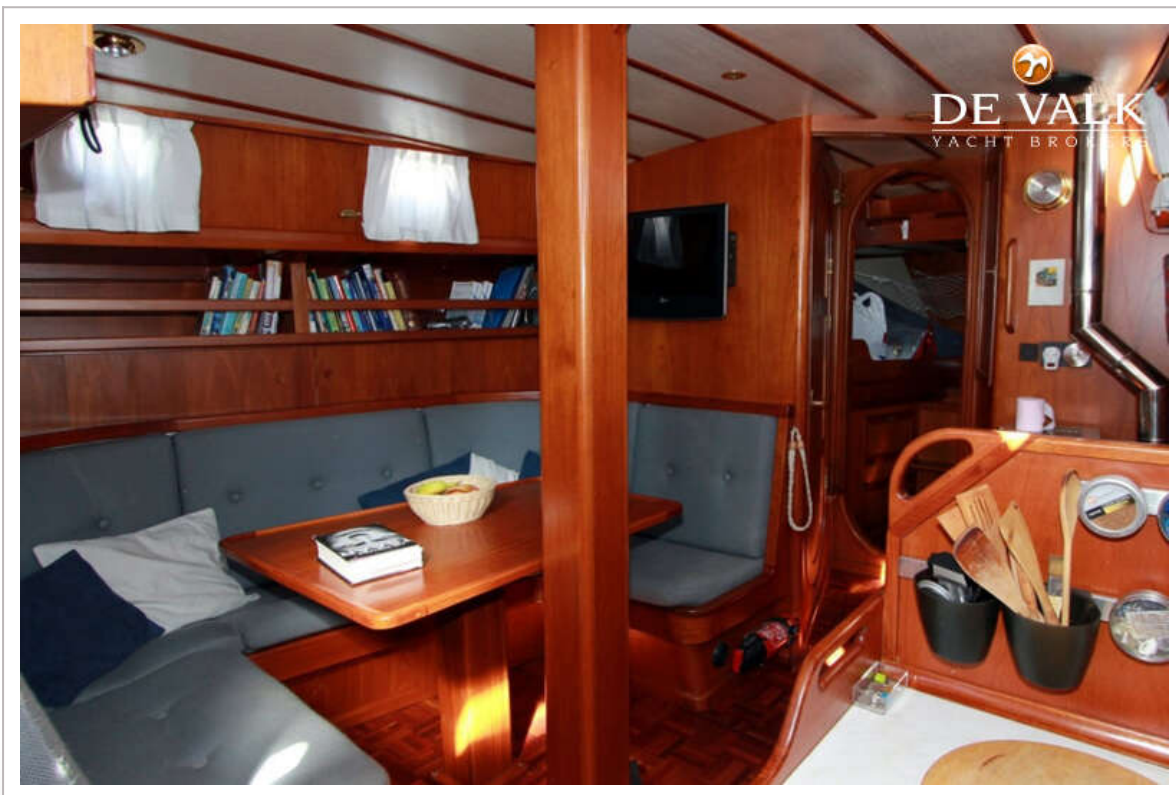
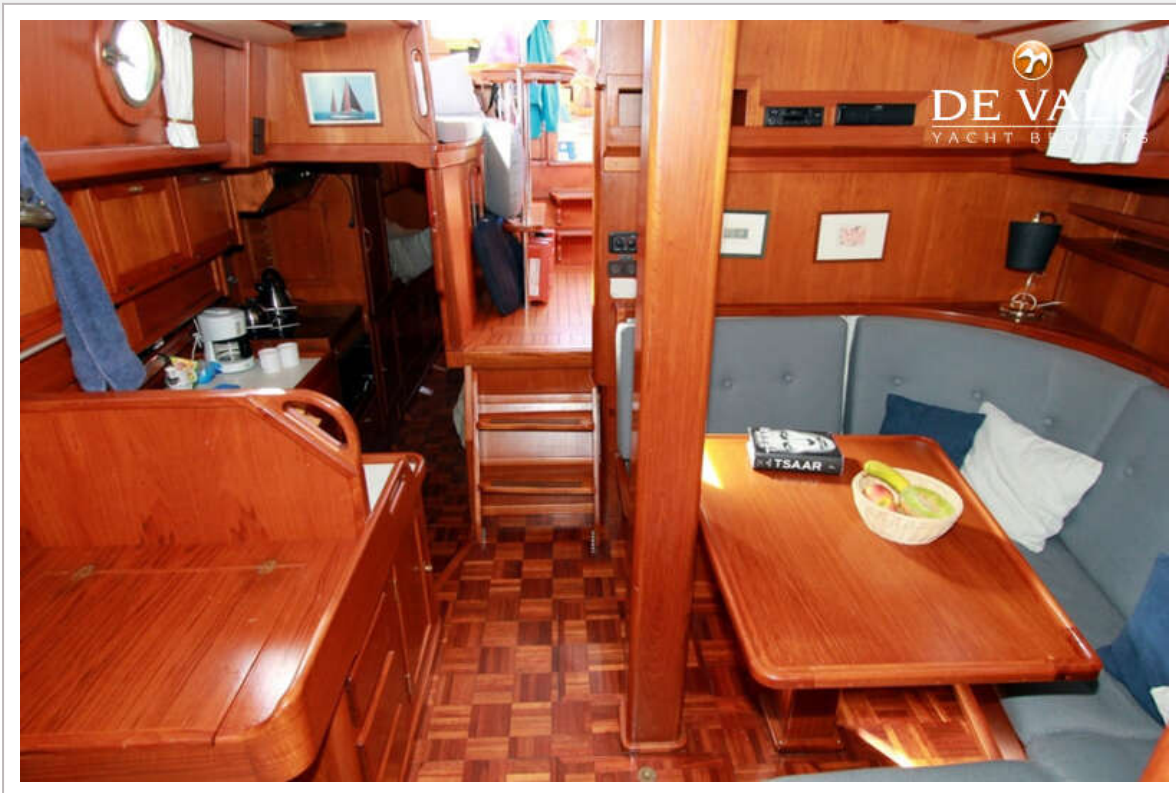


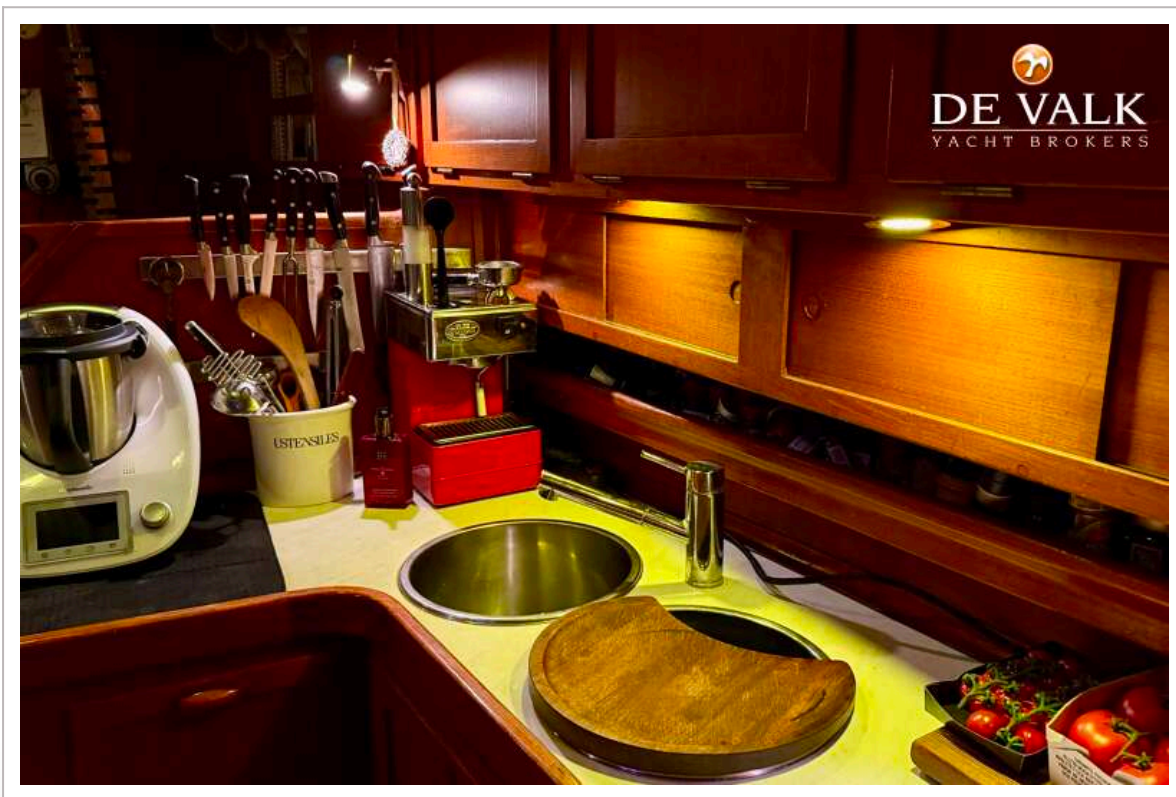
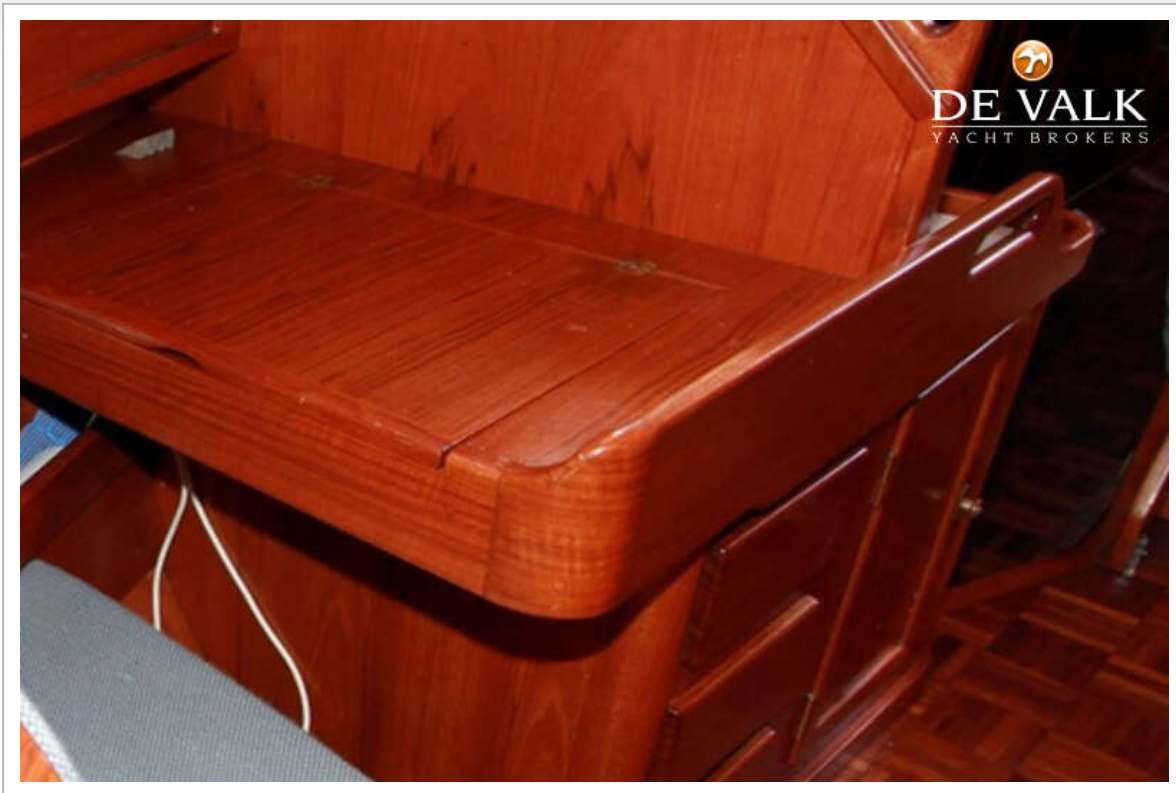


VOLKERAK 46



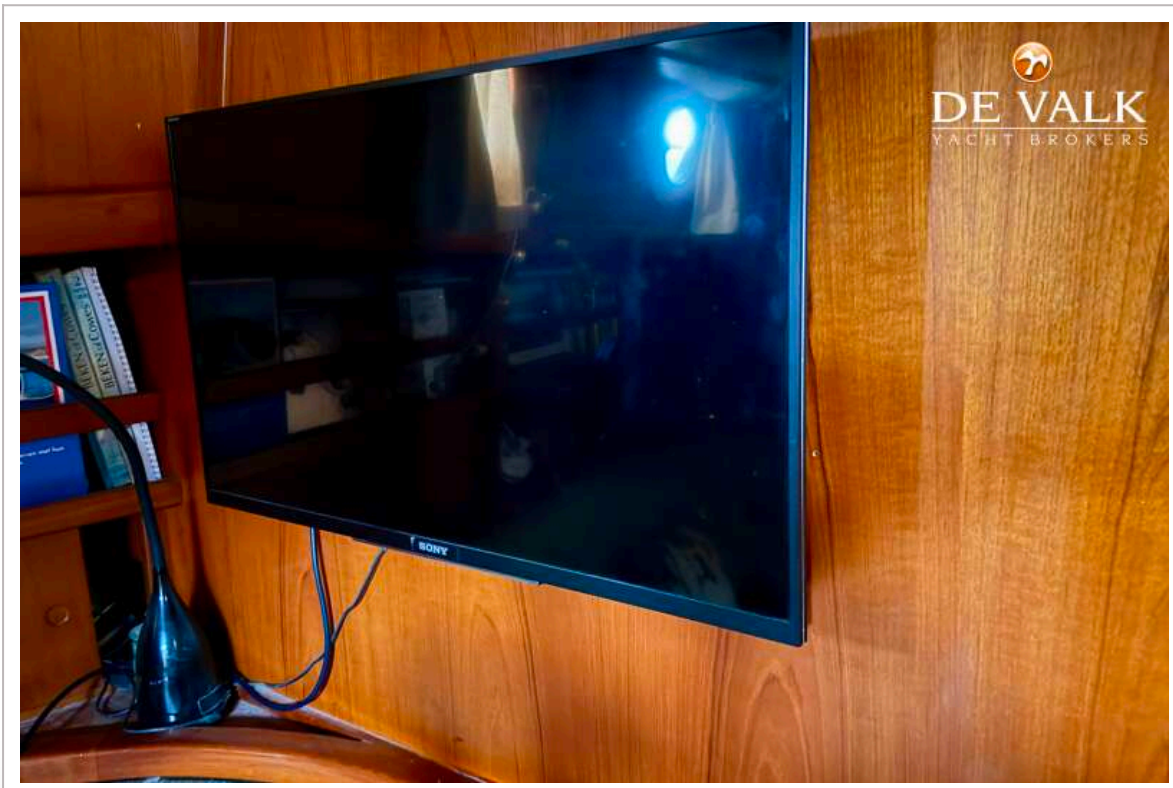
VOLKERAK 46





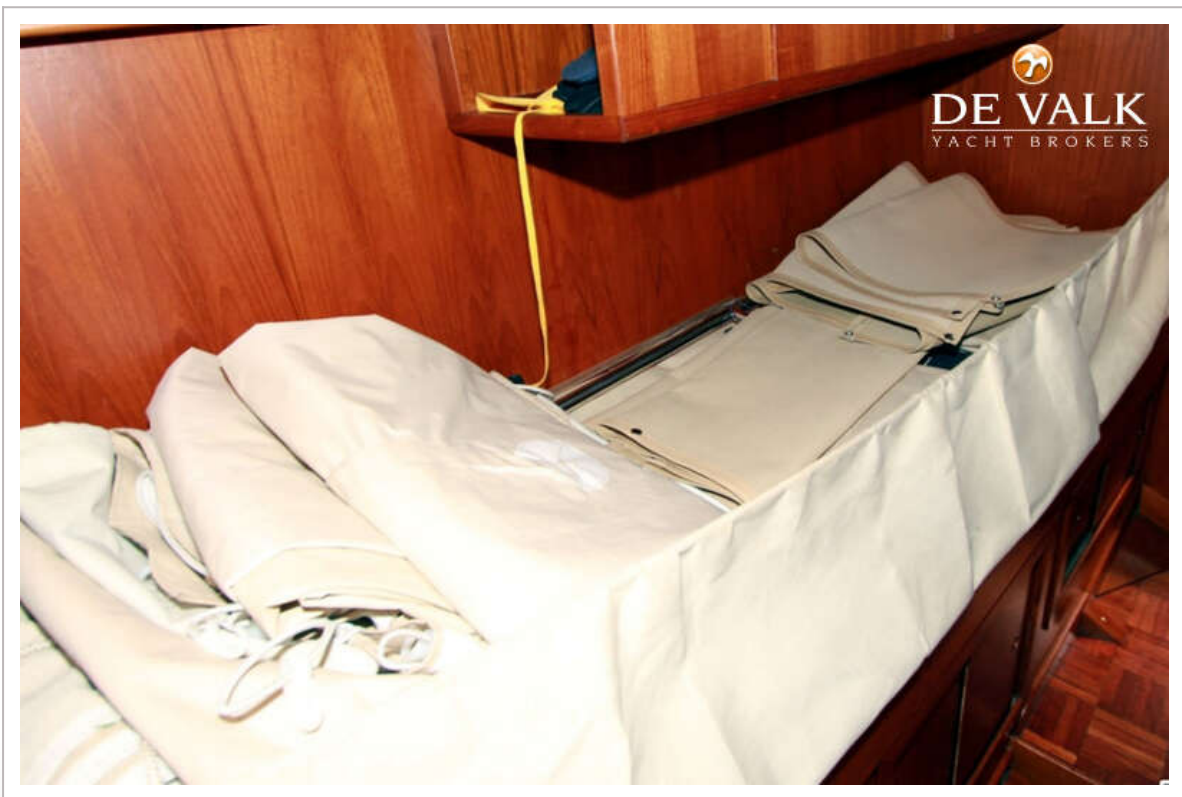
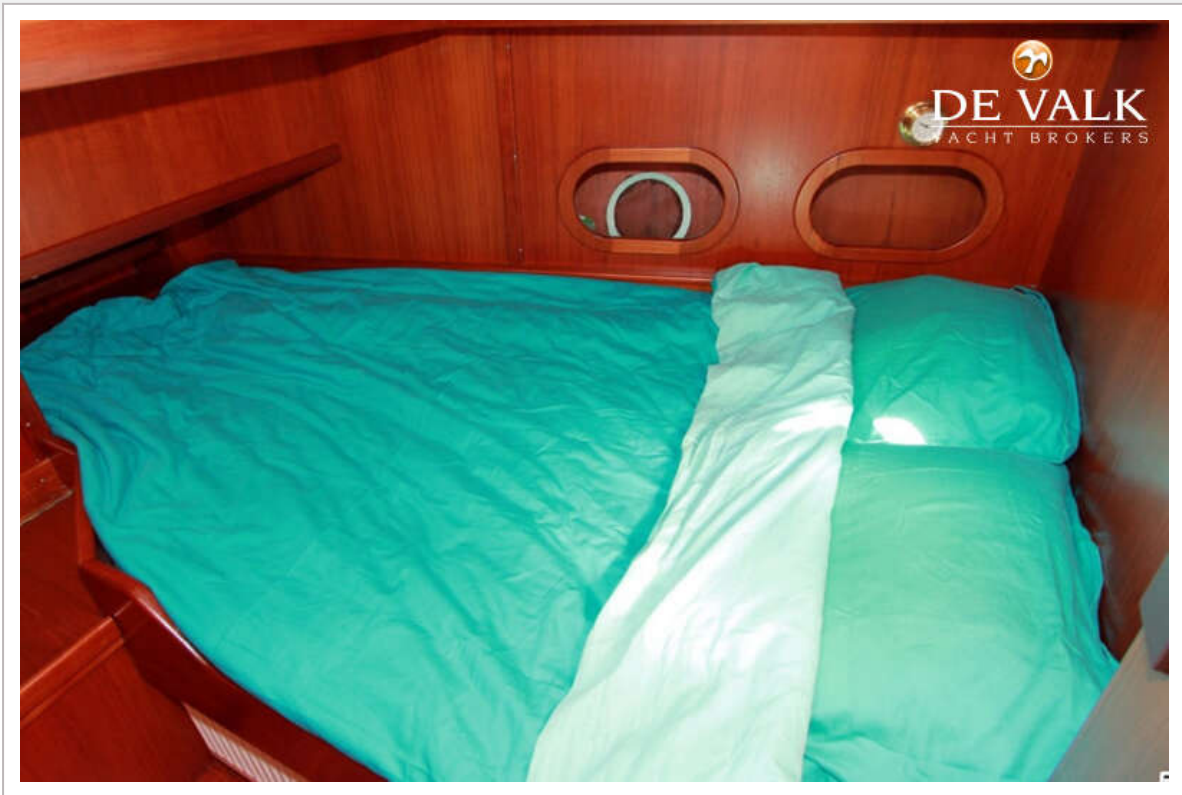


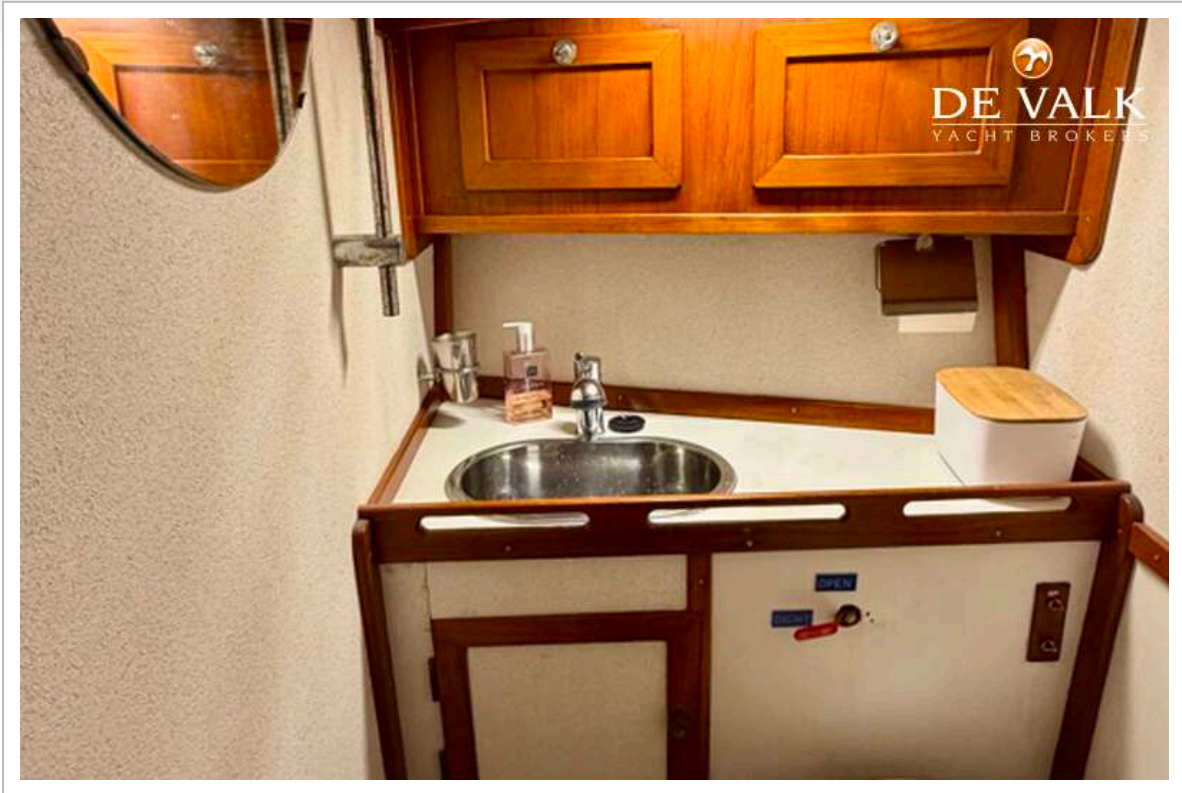
VOLKERAK 46



VOLKERAK 46







VOLKERAK 46

