



DE VALK
YACHT BROKERS



AZIMUT 68 PLUS



DE VALK
YACHT BROKERS

AZIMUT 68 PLUS

BROKER'S COMMENTS

The Azimut 68 plus has a layout that is suitable for both private as commercial chartering providing ample space for 8 guests in 4 cabins plus 2 crew. The Azimut 68 Plus offers the perfect combination of elegance, performance and comfort, with its spacious interior and excellent equipment she represents a true home at sea.

Hans Visser

SPECIFICATIONS

Dimensions	21.10 x 5.40 x 1.45 (m)	Builder	Azimut Yachts
Built	2000	Cabins	4
Material	GRP	Berths	8
Engine(s)	2 x MAN D2840LE403 diesel	Hp/Kw	2 x 1,035.00 (hp), 761.76 (kw)
Asking price	€ 495.000 (VAT Paid)	Lying	at sales office

CONTACT

Sales office	De Valk Hindeloopen B.V.	Telephone	+31 514 52 40 00
Address	Oosterstrand 1 8713 JS Hindeloopen NL	E-mail	hindeloopen@devalk.nl

DISCLAIMER

These particulars are given in good faith as supplied but cannot be guaranteed.



AZIMUT 68 PLUS

GENERAL

Model	AZIMUT 68 PLUS
Type	motor yacht
LOA (m)	21,10
Beam (m)	5,40
Draft (m)	1,45
Headroom (m)	2,00
Year built	2000
Launched	2001
Builder	Azimut Yachts
Country	Italy
Designer	Carlo Galeazzi & Stefano Righini
Displacement (t)	41,4
CE norm	B
Hull material	GRP
Hull colour	blue
Hull shape	deep-V
Keel type	box keel
Superstructure material	GRP
Rubbing strake	stainless steel
Deck material	GRP
Deck finish	teak
Superstructure deck finish	non-skid moulded in
Cockpit deck finish	teak
Antifouling (year)	2025
Window frame	yes
Window material	perspex Glued
Deckhatch	1 x round
Portholes	stainless steel 8x opening
Flybridge	yes
Flybridge cover	For furniture blocks



AZIMUT 68 PLUS

Radar arch	non collapsible
Fuel tank (litre)	stainless steel 4800
Level indicator (fuel tank)	yes
Freshwater tank (litre)	GRP 1200
Level indicator (freshwater)	yes
Blackwater tank (litre)	yes
Level indicator (blackwater)	yes
Blackwater tank extraction	deck extraction + pump
Wheel steering	hydraulic
Inside helm position	hydraulic
Flybridge helm position	hydraulic
More info on paintwork	Blue wrapped in 2025

ACCOMMODATION

Cabins	4
Berths	8
Crew cabin	1
Crew berths	2
Interior	cherry
Layout	Private with crew
Floor	carpet Parquet &
Aft deck	yes
Pilot house/deck saloon	yes
Headroom saloon (m)	2,10
Heating	diesel ducted hot air Eberspacher 2x
Air-conditioning	reverse cycle airco Cruisair has not been used for several year
Navigation center	At the inside helm
Dining room	White leather seats
Sliding door to aft deck	Aluminium
Galley	U shaped
Countertop	corian



AZIMUT 68 PLUS

Sink	corian Double
Cooker	induction AEG 4 burner
Extractor	yes
Microwave/oven combi	yes
Fridge	Home appliance
Freezer	Integrated
Hot water system	220V + engine Isotherm
Water pressure system	electrical 12V
Dishwasher	Bosch silence plus
Kettle	yes
Crockery	Some
Owners cabin	French bed
Bed length (m)	1,70 x 2,05
Wardrobe	walk-in closet
Bathroom	en suite
Toilet	en suite
Toilet system	vacuum Vacuflush
Wash basin	in the bathroom Double
Shower	en suite
Bath tub	en suite
Guest cabin 1	French bed VIP
Bed length (m)	1,60 x 2,05
Wardrobe	hanging/drawers/shelves
Bathroom	en suite
Toilet	en suite
Toilet system	vacuum Vacuflush
Wash basin	in the bathroom
Shower	en suite
Guest cabin 2	twin single
Bed length (m)	0,70 x 2,00
Wardrobe	hanging and shelves
Bathroom	en suite



AZIMUT 68 PLUS

Toilet	en suite
Toilet system	vacuum Vacuflush
Wash basin	in the bathroom
Shower	en suite
Guest cabin 3	bunk bed Crossed
Bed length (m)	0,70 x 2,00
Wardrobe	hanging and shelves
Bathroom	en suite
Toilet	en suite Doubles as day head
Toilet system	vacuum Vacuflush
Wash basin	in the bathroom
Shower	en suite
Crew cabin(s)	1 with double bed
Bathroom (crew)	yes
Toilet (crew)	yes
Toilet system	vacuum Vacuflush
Wash basin	yes
Shower (crew)	yes
Washing machine/dryer combi	AEG in the crew area aft
Central vacuum cleaner	yes
Flybridge	yes
Wet bar	With grill
Tender garage	With hydraulic opening door

MACHINERY

No of engines	2
Make	MAN
Type	D2840LE403
HP	1035
kW	761.76
Fuel	diesel



AZIMUT 68 PLUS

Year installed	2000
Maximum speed (kn)	34
Cruising speed (kn)	30
Engine hours	2400
Engine cooling system	freshwater heat exchanger
Drive	shaft
Shaft seal	yes
Engine controls	electrical
Gearbox	hydraulic
Bowthruster	electric Sidepower
Sternthruster	electric Sidepower
Thrust bearing	yes
Propeller type	fixed
Propeller blades	5
Propeller shaft material	stainless steel
Shaft lubrication	water
Manual bilge pump	yes
Electric bilge pump	yes
Bilge alarm	yes
Electrical installation	12 & 24 V DC and 220 & 400 V AC
Generator	Kohler 15 Kw
Generator 2	Kohler 15 KW (motor runs electric side needs repair)
Batteries	yes
Start battery	2x varta heavy duty 225 ah for 24v 225 ah
Service battery	4 x varta professional 12v 190 ah for 380 ah 24v
Generator battery	1x12v 60 ah
Bowthruster battery	4 x optima yellow top for 24 v
Sternthruster battery	4 x optima yellow top for 24 v
Battery monitor	yes
Battery charger	Mastervolt Chargemaster 24/8-2, 12/25-3 & 24/12-3
Diode battery combiners	yes
Shorepower	with cable



Watermaker	Needs service
Trimtabs	yes

NAVIGATION

Compass	Ritchie
Compass on flybridge	Ritchie
Electric compass	Raymarine
Multi control display	yes
Depth sounder	Raymarine
Log	Raymarine
Repeater	Raymarine
VHF	Simrad
VHF handheld	Simrad
Autopilot	Simrad
Rudder angle indicator	On autopilot
Radar	Raymarine
GPS	Raymarine
Plotter	Raymarine
Radar/GPS/plotter	2 Raymarine displays the 3rd is no longer in function
Electronic chart(s)	yes
AIS transponder	Integrated in nav instruments
Camera	Aft and engineerroom
Navigation lights	yes
Searchlight	yes

EQUIPMENT

Fixed windscreen	yes
Sun awning	yes
Cockpit cushions	yes
Cockpit table	Plus flybridge
Cockpit chairs	yes



AZIMUT 68 PLUS

Bathing platform	Submersable
Boarding ladder	yes
Transom door	And side doors
Gangway	Besenzoni needs hydraulic part & service
Deck shower	Hot & Cold
Anchor	yes
Anchor chain	yes
Windlass	yes
Capstan	electrical 24 V 1500 W
Windlass aft	electrical 2 x
Deck wash	yes
Deck crane	Besenzoni on upper deck
Sea railing	stainless steel
Grab rail (superstructure)	stainless steel
Railing side opening gates	yes
Pushpit	yes
Pulpit	Integrated in Bullworks
Life raft	container 1
Life raft (pers)	6
Last life raft survey	Needs service
Lifejackets	Several
Lifebuoy	yes
Danbuoy	yes
Wiper	2 x
Window ventilator	yes
Horn	yes
Radar reflector	yes
Fenders	Several
Mooring lines	4 x
Spare parts	Some
Tools	Some
Alarm system	yes



AZIMUT 68 PLUS

TV	3 x
Radio	yes
Radio-cd player	All cabins
DVD player	In Master & Vip
iPod connection	yes
Surround Sound System	In Salon
Cockpit speakers	yes
Speakers in cabin	yes
Clock - barometer	yes
Fire extinguisher	3 x need service
Latest extinguisher survey	Needs service
Extinguisher in engine room	yes



AZIMUT 68 PLUS



AZIMUT 68 PLUS



AZIMUT 68 PLUS



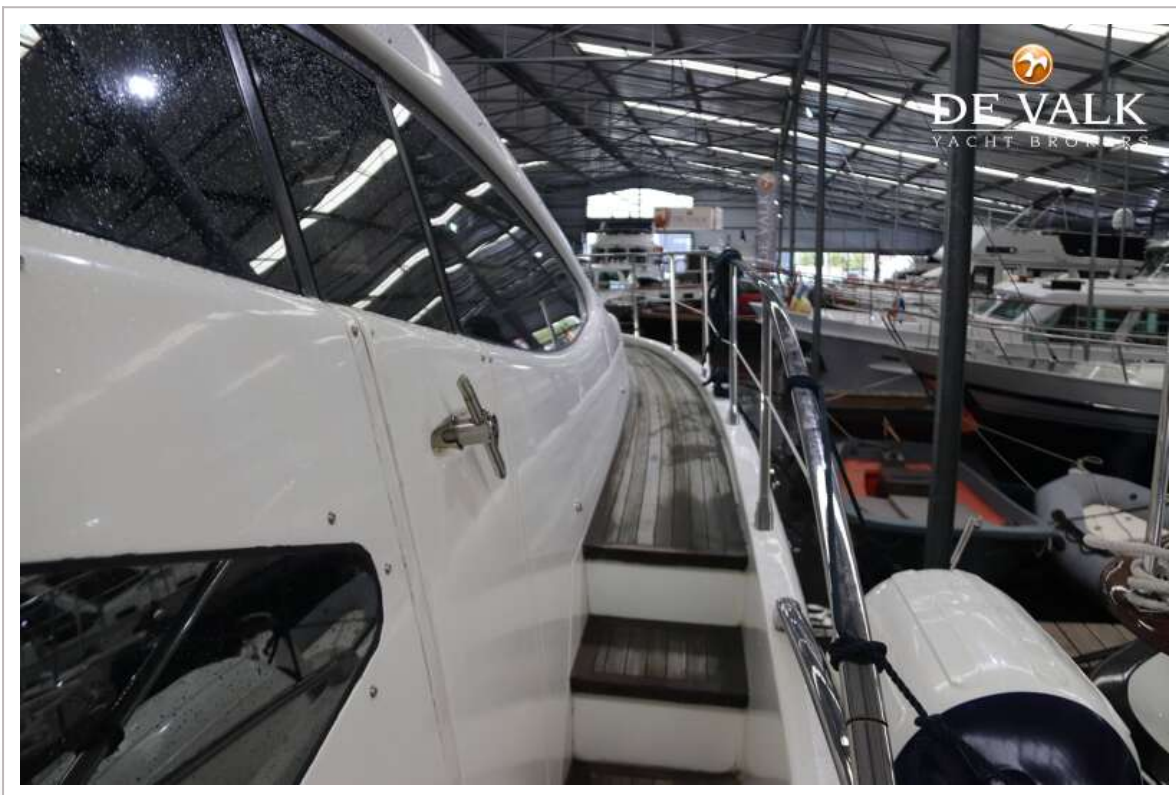
AZIMUT 68 PLUS



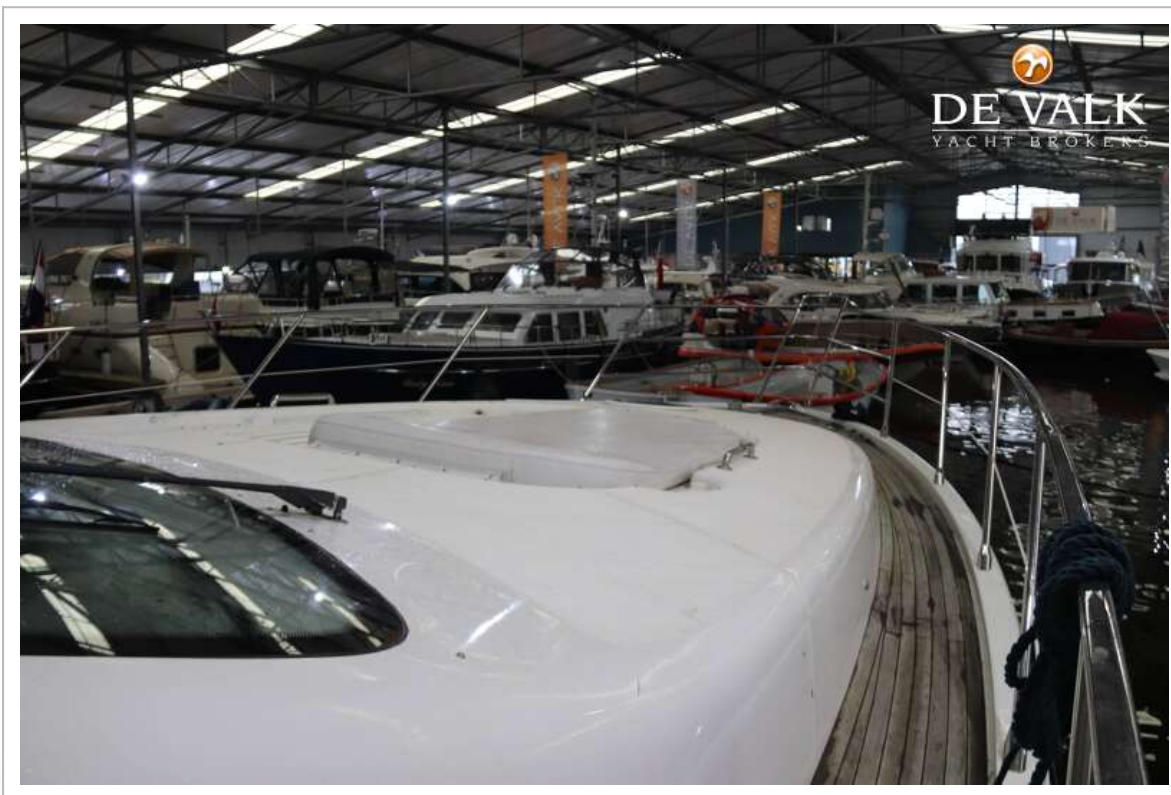
AZIMUT 68 PLUS



AZIMUT 68 PLUS



AZIMUT 68 PLUS



AZIMUT 68 PLUS



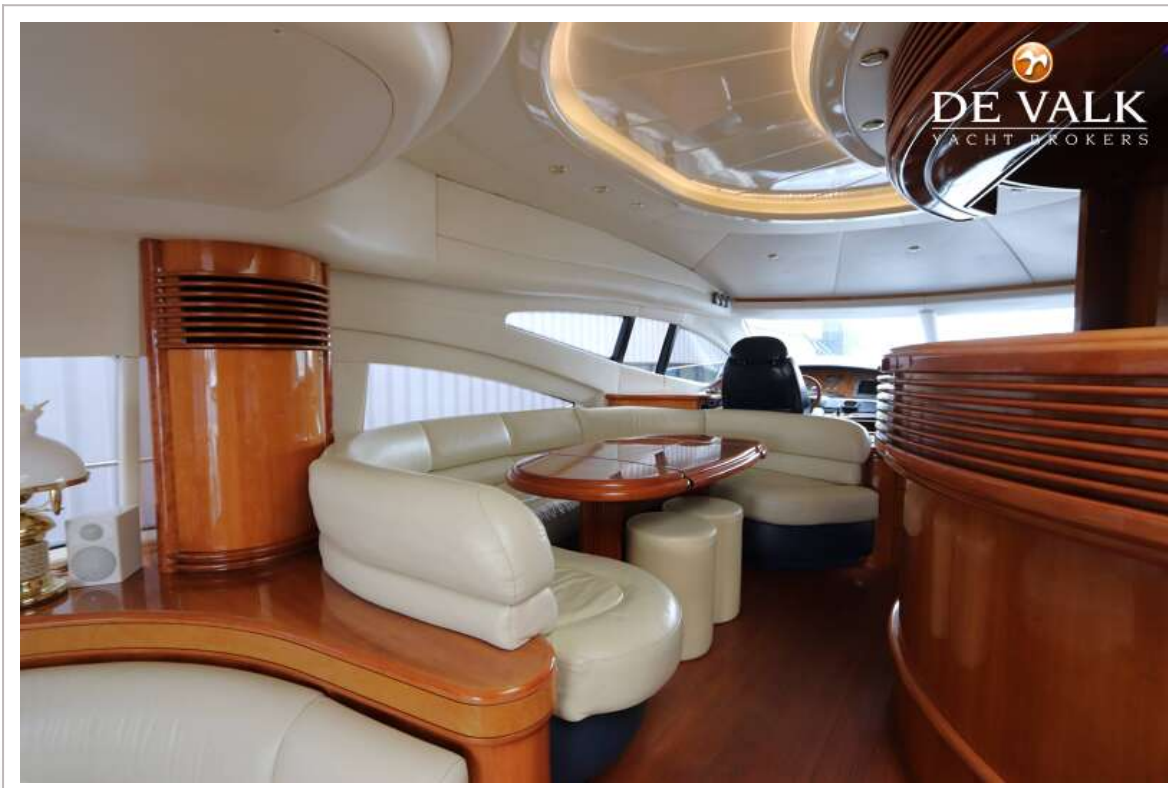
AZIMUT 68 PLUS



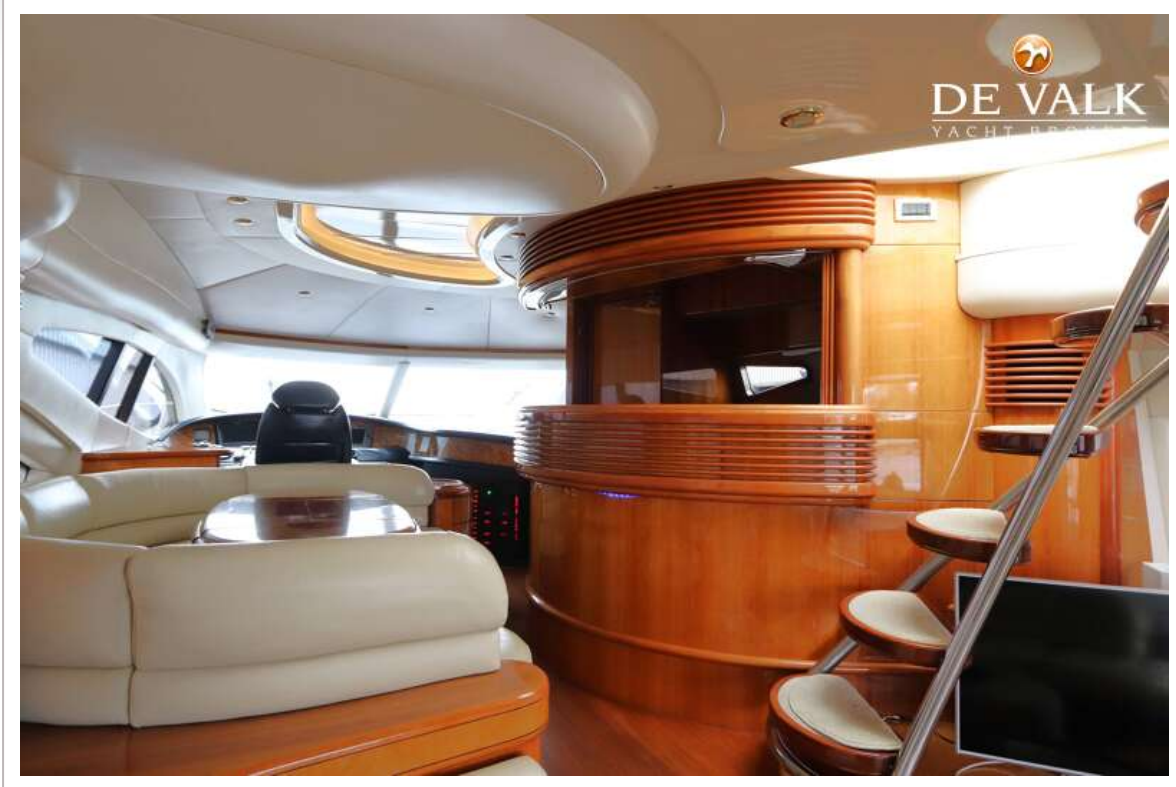
AZIMUT 68 PLUS



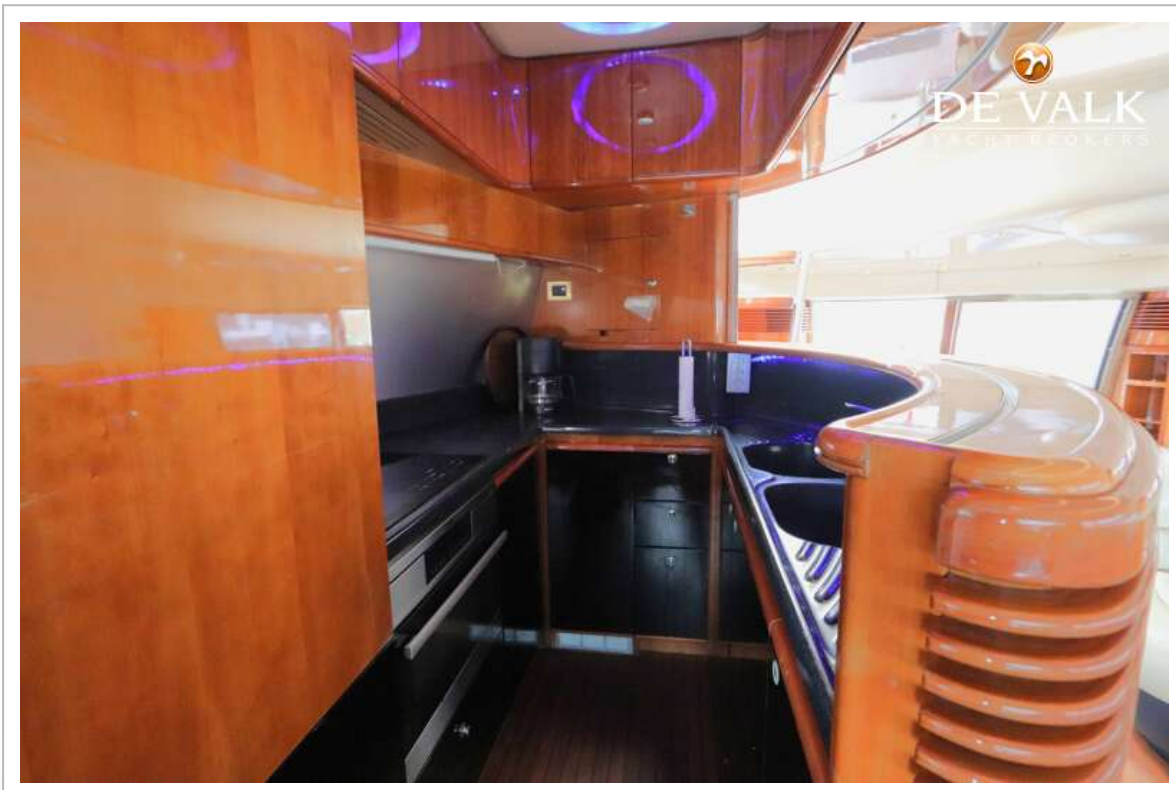
AZIMUT 68 PLUS



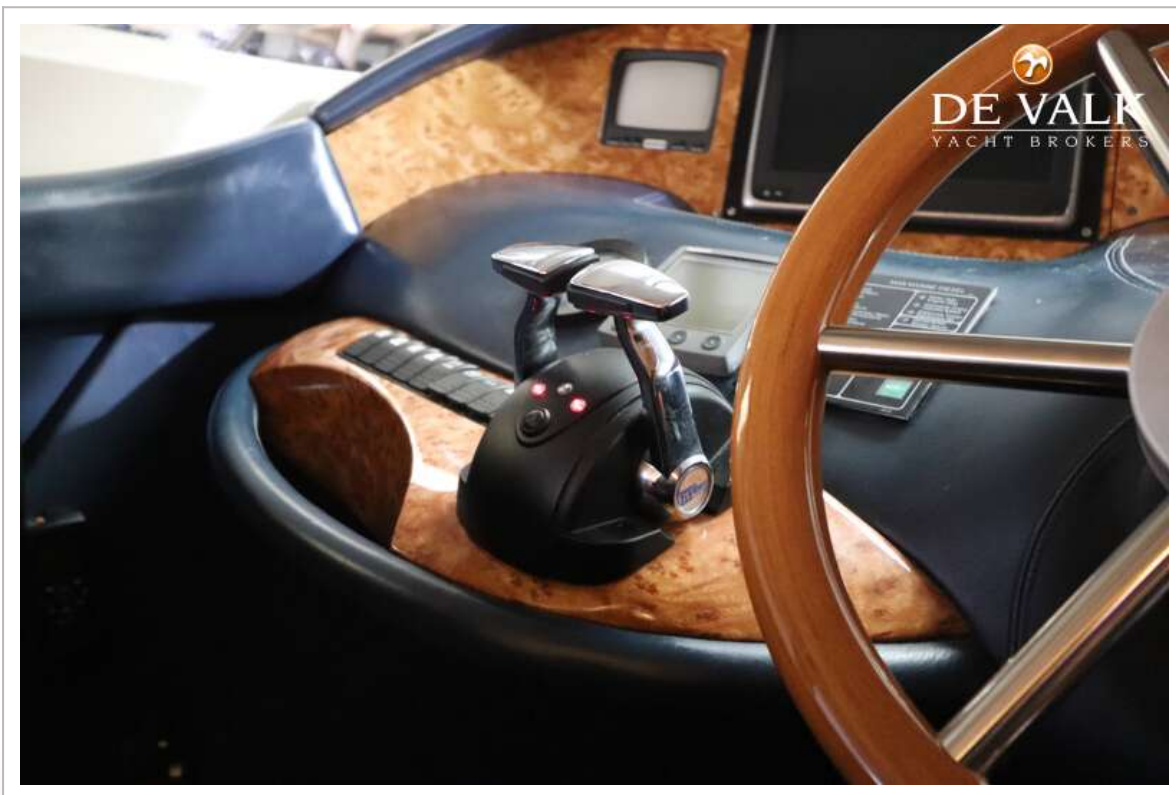
AZIMUT 68 PLUS



AZIMUT 68 PLUS



AZIMUT 68 PLUS



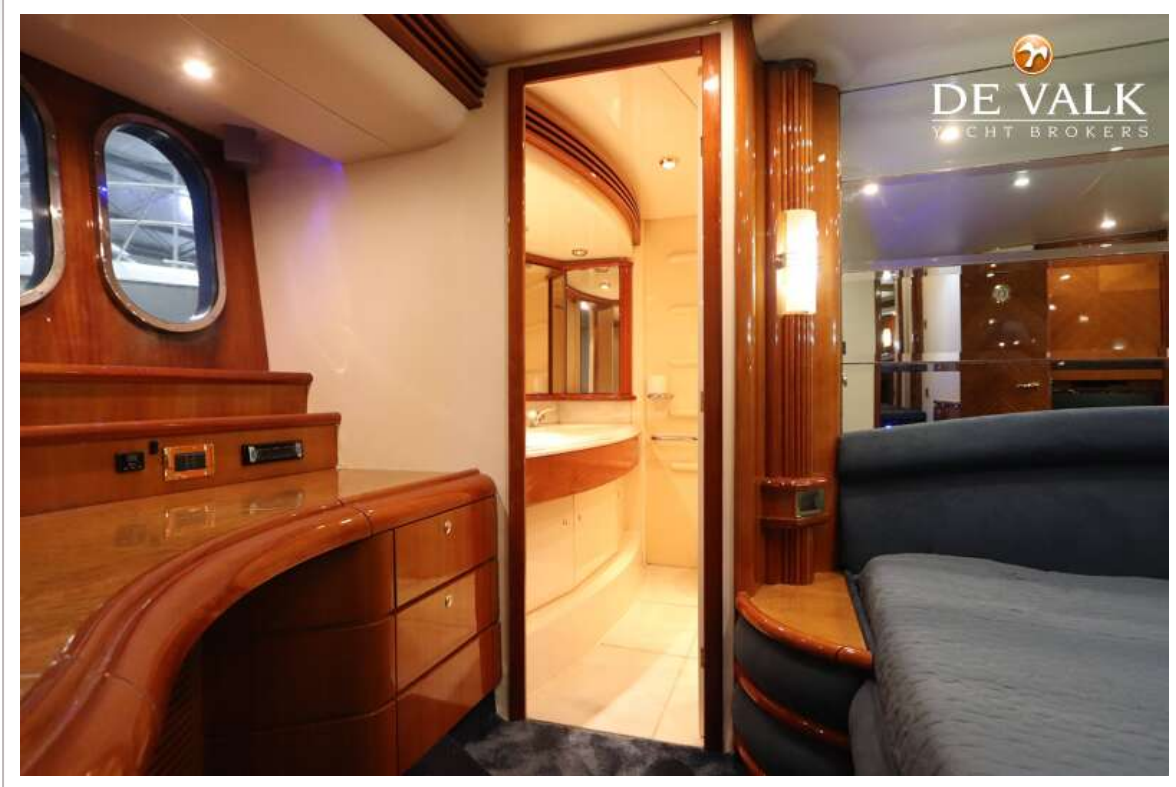
AZIMUT 68 PLUS



AZIMUT 68 PLUS



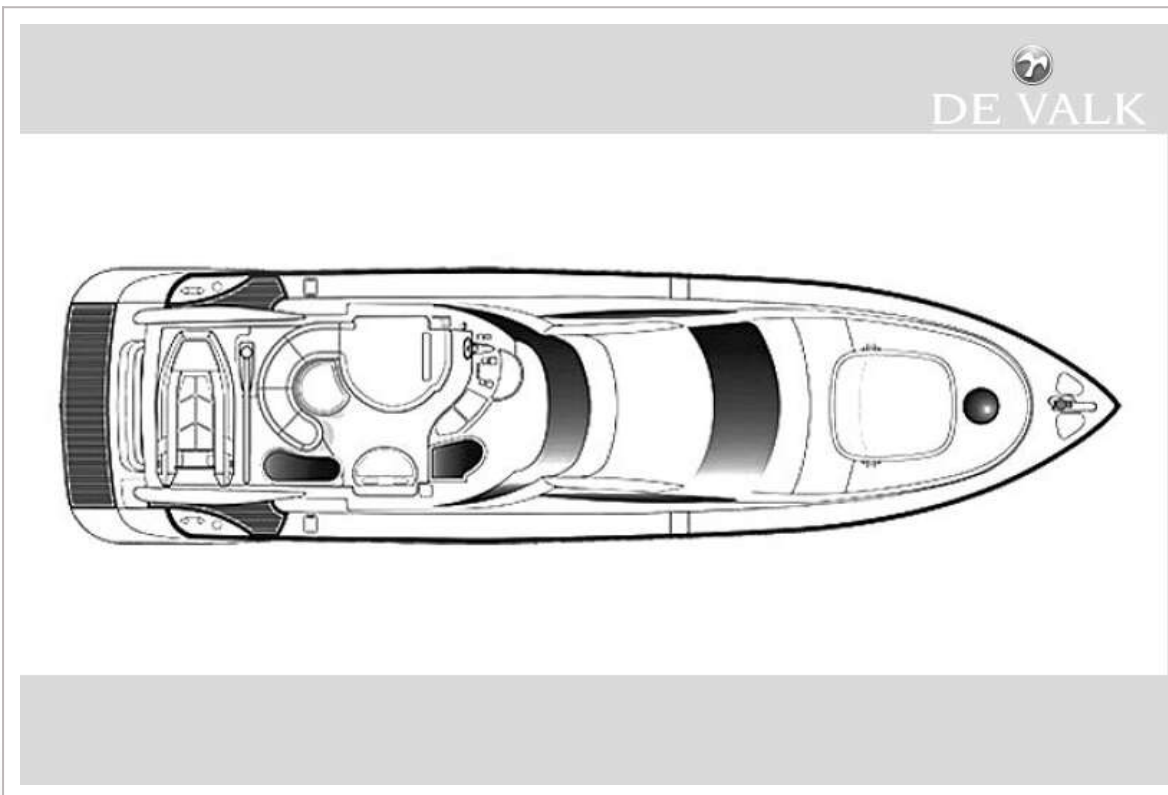
AZIMUT 68 PLUS



AZIMUT 68 PLUS



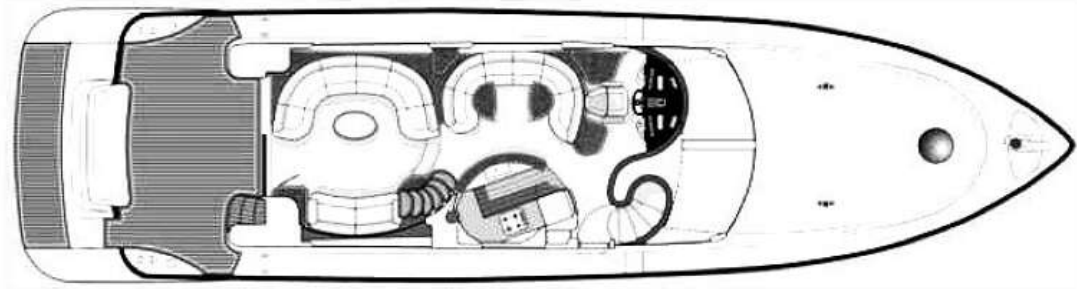
AZIMUT 68 PLUS



AZIMUT 68 PLUS



DE VALK



DE VALK

