



DE VALK  
YACHT BROKERS



## GUY COUACH 2200 FLY



DE VALK  
YACHT BROKERS

# GUY COUACH 2200 FLY

## BROKER'S COMMENTS

The Guy Couach 2200 Fly "RD" is a fantastic motor yacht, fast and comfortable. This lovely Guy Couach 2200 Fly offers a plush salon, a galley with a dedicated dining area close to the pilothouse. She offers three large beautiful ensuite cabins. She will be auctioned on September 1 in cooperation with YachtBid-BVA Auctions. For further details and viewing days go to: <https://www.bva-auctions.com/nl/auction/lot/57392/17331884?pid=0> Opening price of the auction EUR 100,000, offers can be made from August 25 on the website of BVA Auctions.

*Hans Visser*

## SPECIFICATIONS

<b>Dimensions</b>	21.00 x 5.40 x 1.50 (m)	<b>Builder</b>	Guy Couach
<b>Built</b>	2000	<b>Cabins</b>	3
<b>Material</b>	GRP	<b>Berths</b>	7
<b>Engine(s)</b>	2 x MTU V12 diesel	<b>Hp/Kw</b>	2 x 1,150.00 (hp), 845.25 (kw)
<b>Asking price</b>	sold (VAT )	<b>Lying</b>	contact Amsterdam

## CONTACT

<b>Sales office</b>	De Valk Amsterdam	<b>Telephone</b>	+31 35 5829014
<b>Address</b>	Peperstraat 7 1411 PX Naarden The Netherlands	<b>E-mail</b>	amsterdam@devalk.nl

## DISCLAIMER

These particulars are given in good faith as supplied but cannot be guaranteed.



# GUY COUACH 2200 FLY

## GENERAL

<b>Model</b>	GUY COUACH 2200 FLY
<b>Type</b>	motor yacht
<b>LOA (m)</b>	21,00
<b>Beam (m)</b>	5,40
<b>Draft (m)</b>	1,50
<b>Year built</b>	2000
<b>Launched</b>	2000
<b>Builder</b>	Guy Couach
<b>Country</b>	France
<b>Designer</b>	Couach
<b>Displacement (t)</b>	58
<b>CE norm</b>	A
<b>Hull material</b>	GRP
<b>Hull colour</b>	white
<b>Hull shape</b>	deep-V
<b>Superstructure material</b>	GRP
<b>Rubbing strake</b>	
<b>Deck material</b>	GRP
<b>Deck finish</b>	teak
<b>Superstructure deck finish</b>	teak
<b>Cockpit deck finish</b>	teak
<b>Window frame</b>	aluminium
<b>Window material</b>	tempered glass
<b>Deckhatch</b>	yes
<b>Portholes</b>	stainless steel
<b>Flybridge</b>	yes
<b>Flybridge cover</b>	yes
<b>Flybridge cockpit cover</b>	yes
<b>Flybridge suncover</b>	yes
<b>Radar arch</b>	



# GUY COUACH 2200 FLY

Fuel tank (litre)	aluminium 8800
Level indicator (fuel tank)	yes
Freshwater tank (litre)	aluminium 1500
Level indicator (freshwater)	yes
Blackwater tank (litre)	
Level indicator (blackwater)	yes
Blackwater tank extraction	pump
Wheel steering	hydraulic
Inside helm position	yes
Flybridge helm position	hydraulic

## ACCOMMODATION

Cabins	3
Berths	7
Crew cabin	1
Crew berths	2
Interior	cherry
Layout	Private
Floor	carpet
Open cockpit	yes
Aft deck	yes
Pilot house/deck saloon	yes
Saloon	yes
Heating	electric 220V
Air-conditioning	reverse cycle airco
Navigation center	yes
Aft Cabin	yes
Dining room	yes
Sliding door to cockpit	And 3 to side decks
Sliding door to aft deck	yes
Galley	U shaped



# GUY COUACH 2200 FLY

Countertop	corian White
Sink	stainless steel Double
Cooker	ceramic 4 burner
Oven	Stainless steel
Extractor	yes
Microwave	Stainless
Fridge	yes
Freezer	yes
Wine cooler	In the saloon
Hot water system	220V + engine New boiler 2019
Water pressure system	electrical
Dishwasher	Siemens
Kettle	yes
Ice maker	yes
Coffee maker	yes
Crockery	For 6 pers.
Owners cabin	French bed Full beam
Bed length (m)	2,05 x 1,80
Wardrobe	hanging/drawers/shelves Walk in
Bathroom	en suite
Toilet	en suite
Toilet system	electric
Wash basin	in the bathroom
Shower	en suite
Guest cabin 1	French bed VIP
Bed length (m)	2.05 x 1,60
Wardrobe	hanging/drawers/shelves
Bathroom	en suite
Toilet	en suite
Toilet system	electric
Wash basin	in the bathroom
Shower	en suite



# GUY COUACH 2200 FLY

<b>Guest cabin 2</b>	twin single With 3rd child berth
<b>Bed length (m)</b>	2,00 x 0,65
<b>Wardrobe</b>	hanging/drawers/shelves
<b>Bathroom</b>	en suite
<b>Toilet</b>	en suite
<b>Toilet system</b>	electric
<b>Wash basin</b>	in the bathroom
<b>Shower</b>	en suite
<b>Crew cabin(s)</b>	1
<b>Bathroom (crew)</b>	yes
<b>Toilet (crew)</b>	yes
<b>Toilet system</b>	electric
<b>Wash basin</b>	in the bathroom
<b>Shower (crew)</b>	yes
<b>Washing machine</b>	yes
<b>Washing machine/dryer combi</b>	Siemens
<b>Flybridge</b>	yes
<b>Wet bar</b>	With grill on the fly bridge

## MACHINERY

<b>No of engines</b>	2
<b>Make</b>	MTU
<b>Type</b>	V12
<b>HP</b>	1150
<b>kW</b>	845,25
<b>Fuel</b>	diesel
<b>Year installed</b>	2000
<b>Maximum speed (kn)</b>	27
<b>Cruising speed (kn)</b>	24
<b>Engine hours</b>	1580
<b>Engine cooling system</b>	freshwater heat exchanger



# GUY COUACH 2200 FLY

Drive	shaft
Shaft seal	yes
Engine controls	electrical
Gearbox	hydraulic
Bowthruster	hydraulic
Sternthruster	hydraulic
Propeller type	fixed
Propeller blades	5
Propeller shaft material	stainless steel
Shaft lubrication	grease
Manual bilge pump	yes
Electric bilge pump	yes
Bilge alarm	yes
Electrical installation	12 & 24 V DC & 230 V AC
Generator	
Generator 2	
Batteries	yes
Start battery	yes
Service battery	yes
Battery monitor	yes
Battery charger	Dolphin
Inverter	Mastervolt 6000 W
Diode battery combiners	yes
Shorepower	with cable
Watermaker	yes
Trimtabs	yes

## NAVIGATION

Compass	yes
Compass on flybridge	yes
Electric compass	yes



# GUY COUACH 2200 FLY

Depth sounder	yes
Log	yes
Windset	yes
Repeater	yes
VHF	Raymarine
VHF handheld	yes
Autopilot	Simrad Robertson AP 20
Rudder angle indicator	yes
Radar	Raytheon
Plotter/GPS	yes
Radar/GPS/plotter	Simrad CP20
Navtex	yes
Personal computer	yes
PC connection	yes
Wifi antenna	yes
Electronic chart(s)	yes
EPIRB	yes
Navigation lights	yes
Searchlight	yes

## EQUIPMENT

Fixed windscreen	yes
Bimini	yes
Sun awning	yes
Cockpit cushions	yes
Cockpit table	yes
Cockpit chairs	yes
Bathing platform	yes
Boarding ladder	stainless steel
Transom door	yes
Gangway	Besenzoni





# GUY COUACH 2200 FLY

Deck shower	yes
Anchor	
Anchor chain	yes
Chain counter	yes
Windlass	
Windlass aft	For mooring
Dinghy	Arimar
Outboard	Yamaha 9,9
Deck crane	hydraulic Conseiled besenzoni
Sea railing	stainless steel
Grab rail (superstructure)	
Pushpit	yes
Life raft	valise (or bag)
Last life raft survey	Needs service in June 2020
Lifejackets	yes
Lifebuoy	yes
Danbuoy	yes
Wiper	3 x
Horn	
Fenders	yes
Mooring lines	yes
Spare parts	yes
Tools	yes
TV	yes
TV receiver	yes
Radio-cd player	yes
DVD player	yes
Surround Sound System	Bose in salon and master cabin
Sub-woofer	yes
Cockpit speakers	Not working
Speakers in salon	yes
Speakers in cabin	yes



Fire extinguisher

yes



# GUY COUACH 2200 FLY



# GUY COUACH 2200 FLY



# GUY COUACH 2200 FLY



GUY COUACH 2200 FLY



# GUY COUACH 2200 FLY

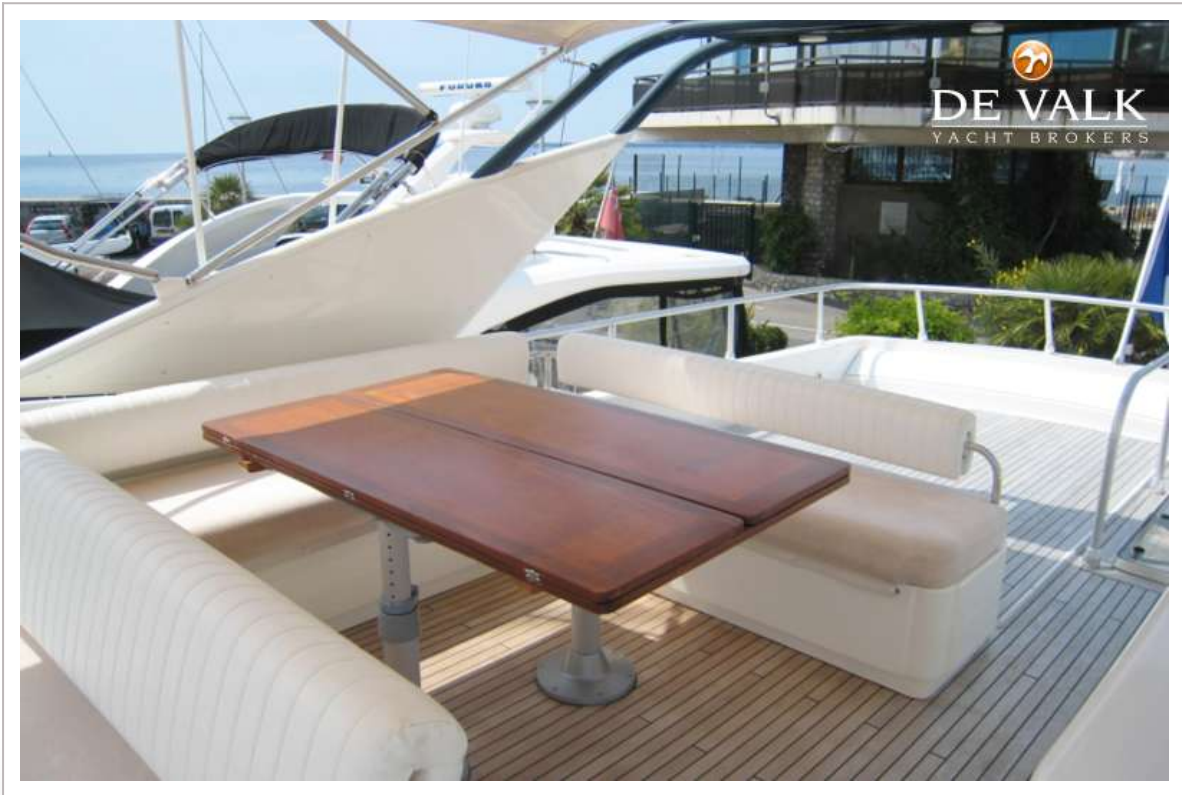
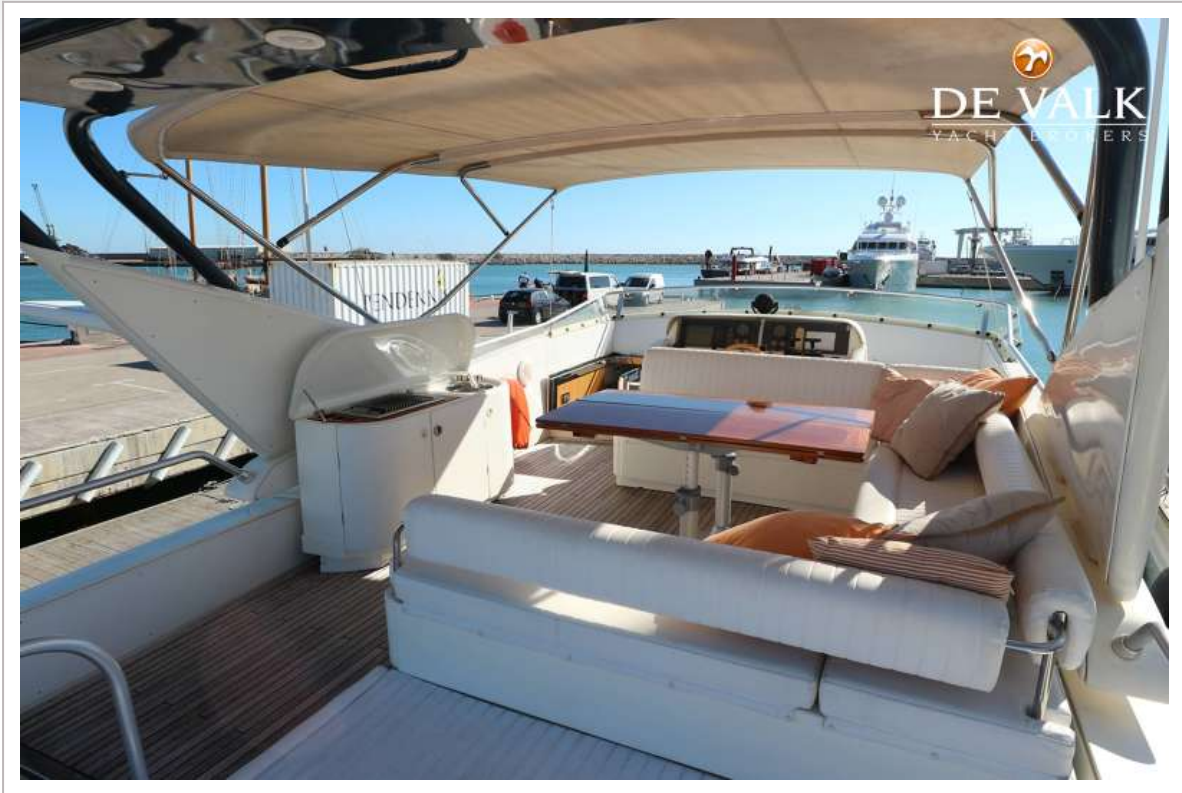


GUY COUACH 2200 FLY





GUY COUACH 2200 FLY



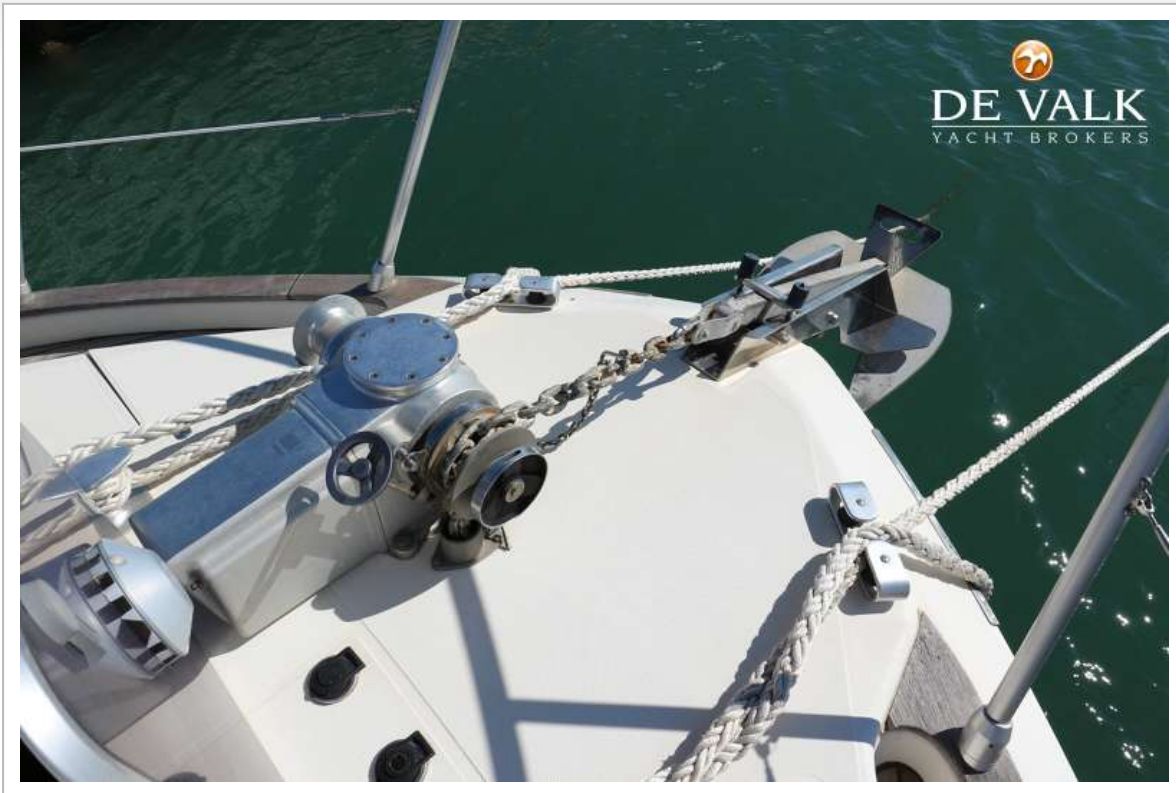
GUY COUACH 2200 FLY



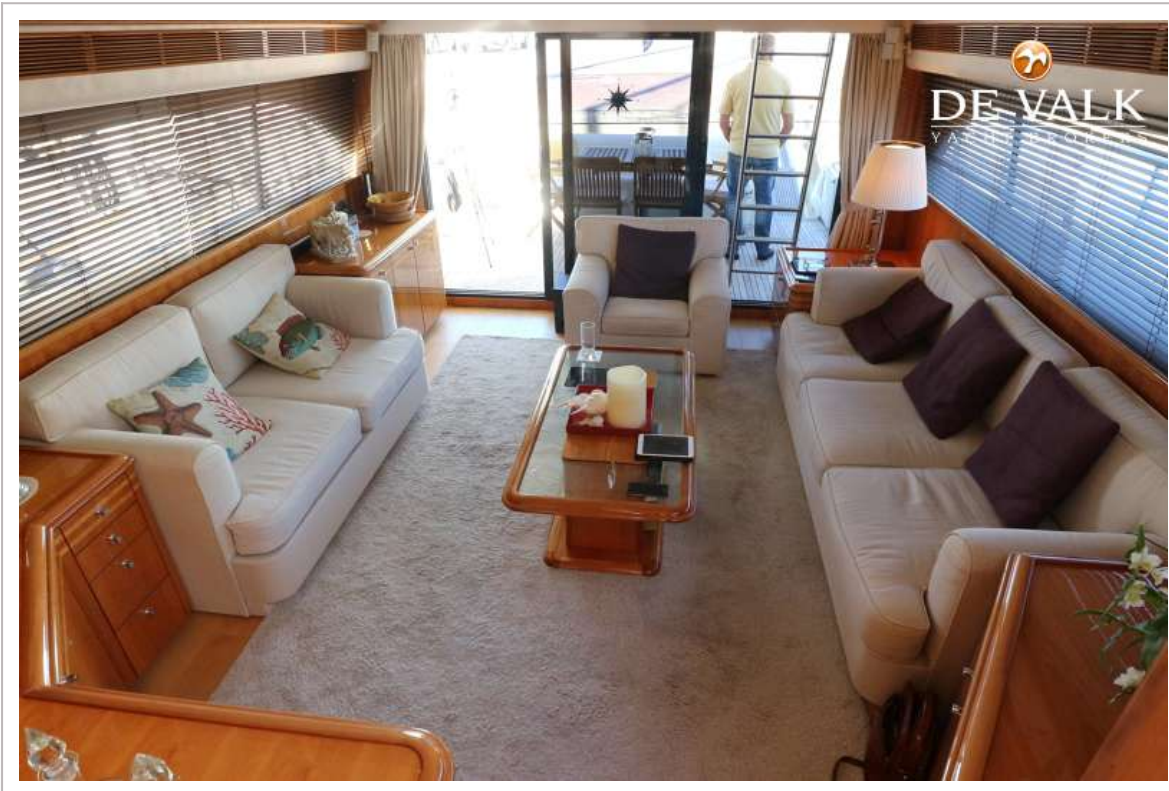
# GUY COUACH 2200 FLY



# GUY COUACH 2200 FLY



GUY COUACH 2200 FLY



GUY COUACH 2200 FLY



# GUY COUACH 2200 FLY

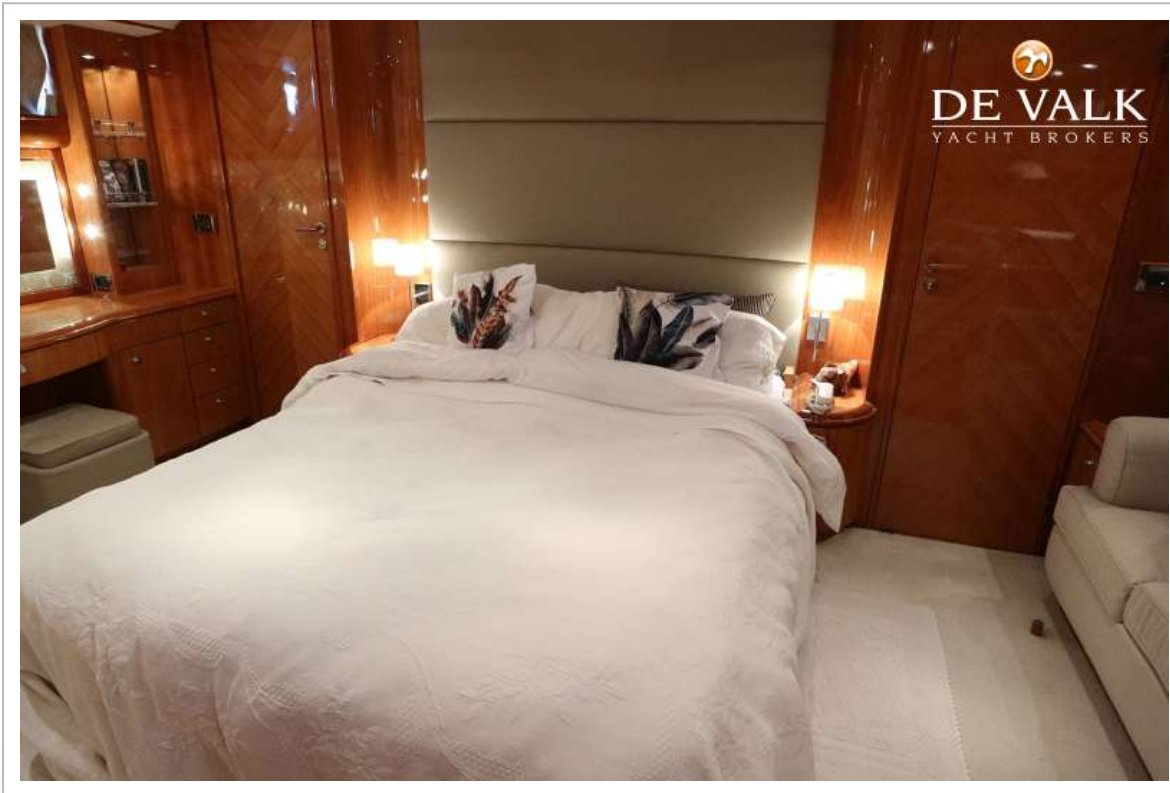


GUY COUACH 2200 FLY





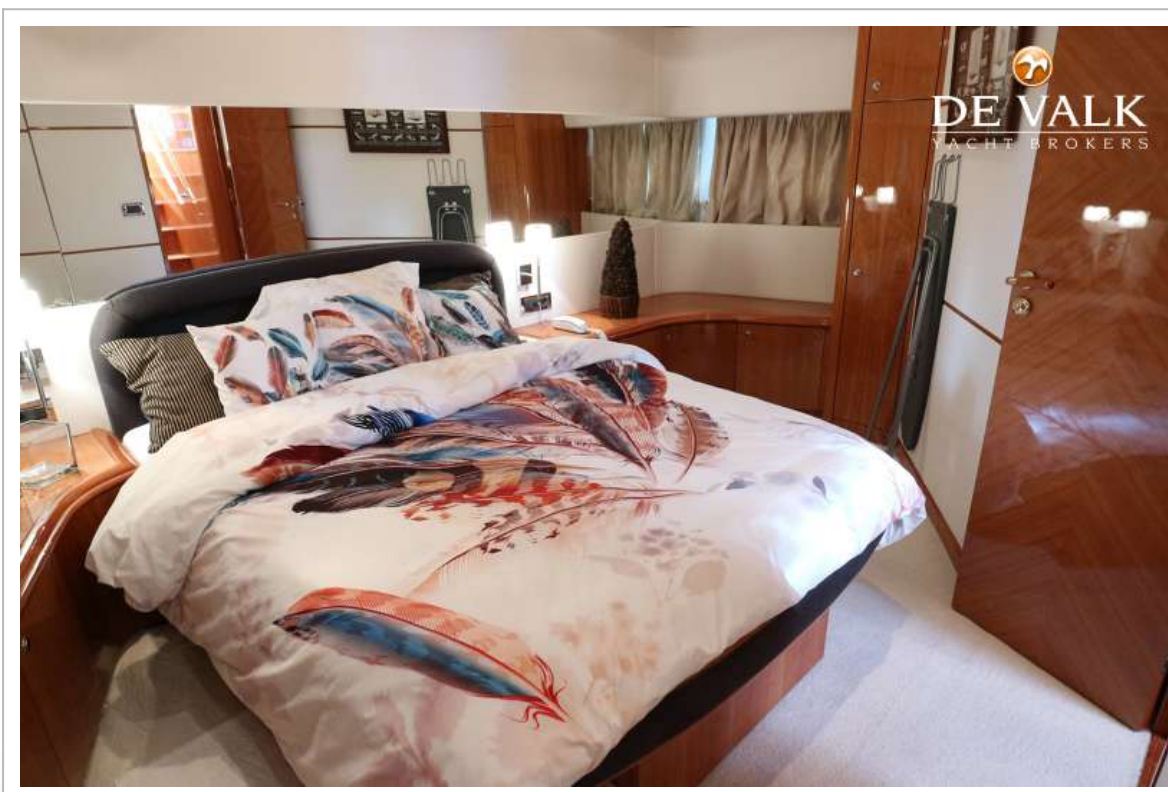
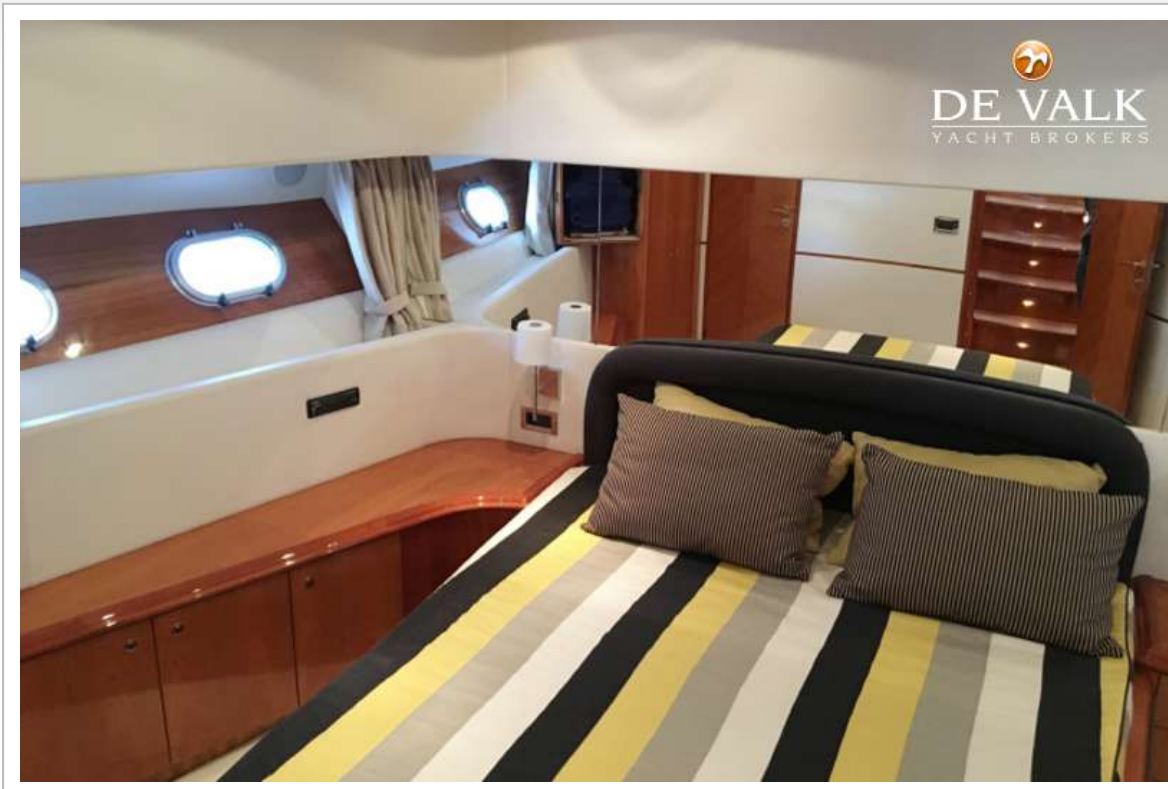
GUY COUACH 2200 FLY



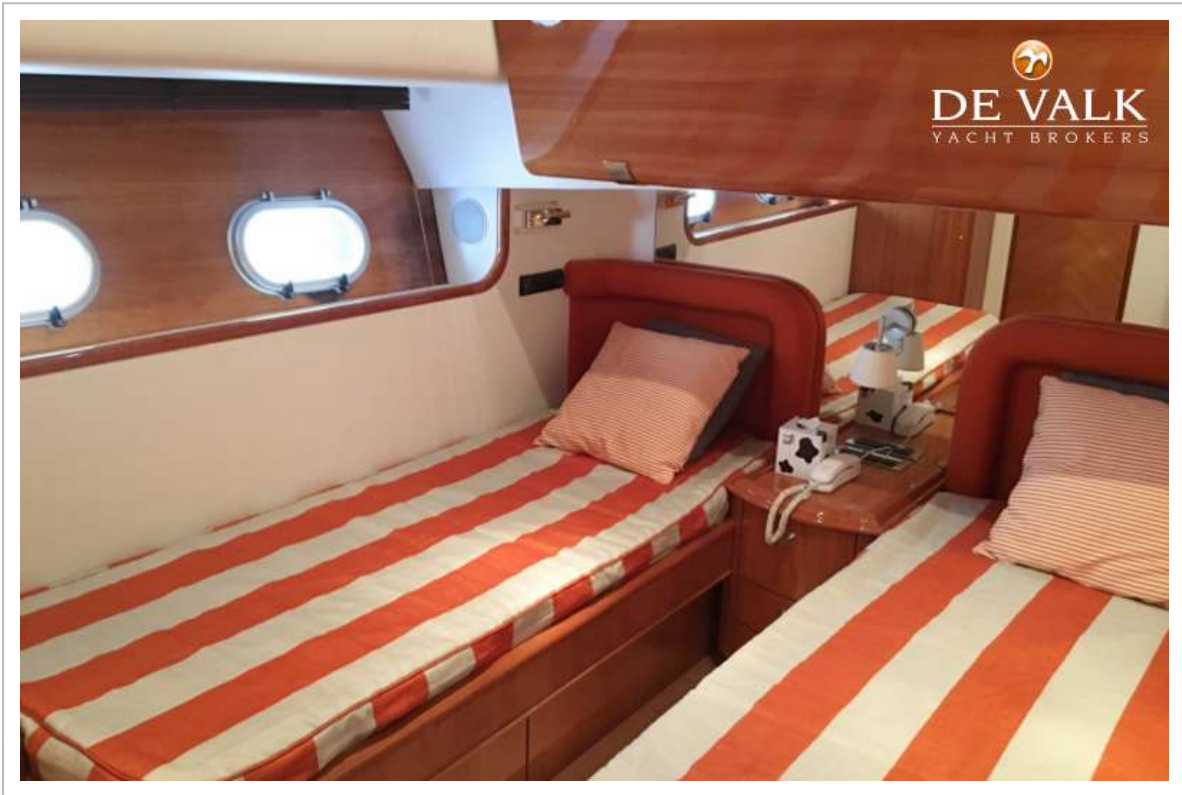
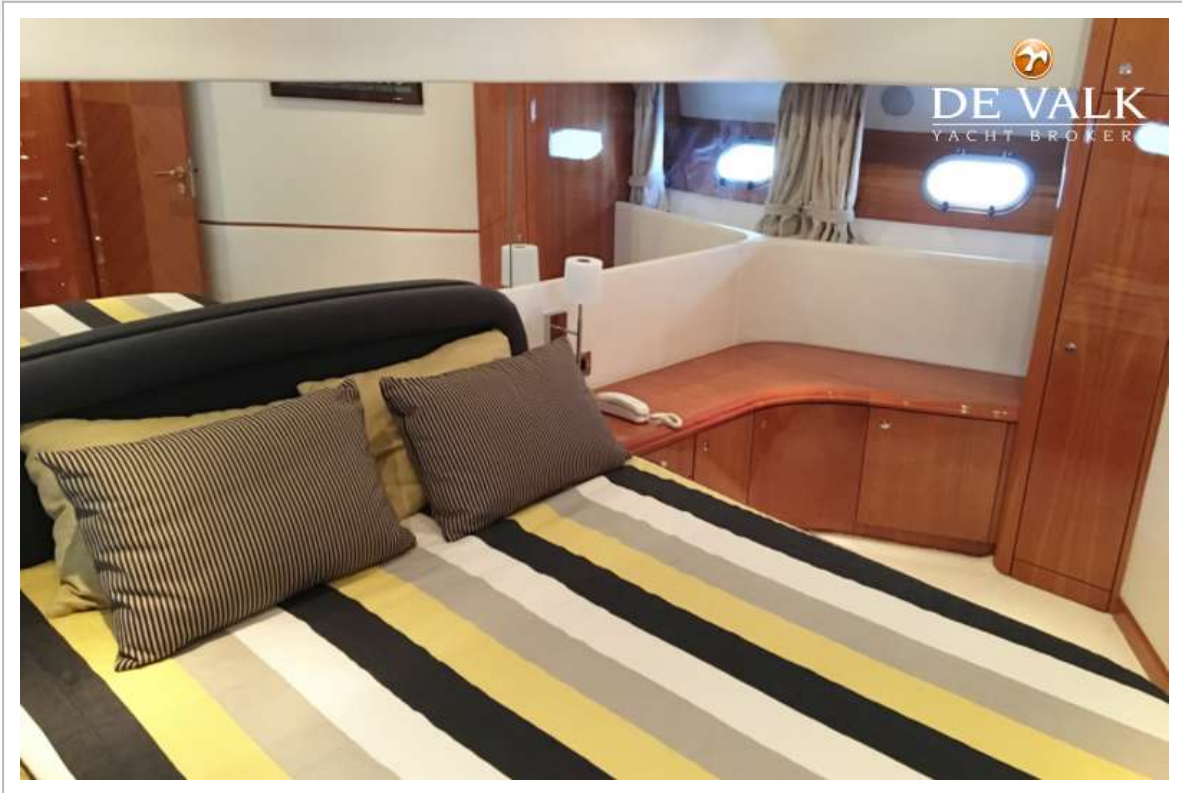
GUY COUACH 2200 FLY



# GUY COUACH 2200 FLY



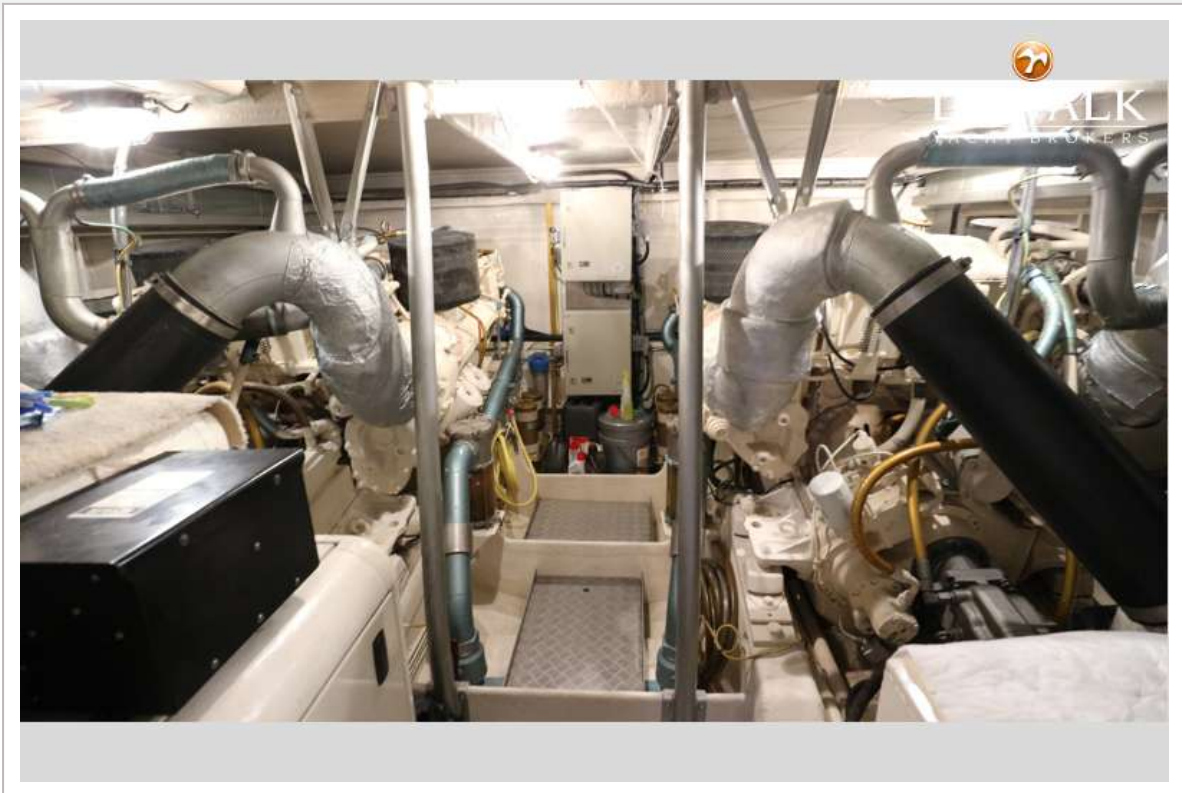
GUY COUACH 2200 FLY



# GUY COUACH 2200 FLY



# GUY COUACH 2200 FLY



# GUY COUACH 2200 FLY

