



CLASSIC DUTCH MOTORSAILER



CLASSIC DUTCH MOTORSAILER

BROKER'S COMMENTS

The classic Dutch motor sailor " Vagabundo" is long owned by Italian family. From 1990 to 1993 she was fully rebuilt at Riviera de San Remo shipyards. She was stripped to bear steel and everything was removed to be reinstalled after careful restoration. Vagabundo is in perfect condition and ready to go

Hans Visser

SPECIFICATIONS

Dimensions	27.55 x 4.72 x 2.30 (m)	Builder	N.V. Scheepsbouw Mij v/h Fa. Schouten bv
Built	1932	Cabins	4
Material	Steel	Berths	8
Engine(s)	2 x volvo TAMD 70 diesel	Hp/Kw	2 x 290.00 (hp), 213.15 (kw)
Asking price	€ 500.000 (VAT Exempt)	Lying	elsewhere / Not at sales office

CONTACT

Sales office	De Valk Hindeloopen B.V.	Telephone	+31 514 52 40 00
Address	Oosterstrand 1 8713 JS Hindeloopen NL	E-mail	hindeloopen@devalk.nl

DISCLAIMER

These particulars are given in good faith as supplied but cannot be guaranteed.



CLASSIC DUTCH MOTORSAILER

GENERAL

Model	CLASSIC DUTCH MOTORSAILER
Type	motorsailer
LOA (m)	27,55
LWL (m)	20,15
Beam (m)	4,72
Draft (m)	2,30
Year built	1932
Launched	Rebuilt in 1993
Builder	N.V. Scheepsbouw Mij v/h Fa. Schouten bv
Country	The Netherlands
Designer	H. Schouten / Prince Spada-Potenziani
Displacement (t)	90
Gross tonnage	73
CE norm	NA
Hull material	steel
Hull colour	white
Hull shape	S-bilged
Keel type	long keel
Superstructure material	wood
Deck material	wood
Deck finish	teak
Superstructure deck finish	teak
Cockpit deck finish	teak
Dorades	yes
Deckhatch	yes
Portholes	yes
Fuel tank (litre)	2550
Level indicator (fuel tank)	yes
Freshwater tank (litre)	2000
Level indicator (freshwater)	yes



CLASSIC DUTCH MOTORSAILER

Inside helm position	yes
Outside helm position	yes
Extra info	LOD 25,91

ACCOMMODATION

Cabins	4
Berths	8
Crew cabin	1
Crew berths	3
Interior	mahogany Calssic
Layout	Private
Floor	teak and holly
Aft deck	yes
Pilot house/deck saloon	yes
Air-conditioning	reverse cycle airco
Navigation center	yes
Opening door to cockpit	yes
Galley	yes
Countertop	tiles
Sink	stainless steel
Cooker	electric 4 burner
Oven	yes
Fridge	yes
Freezer	yes
Hot water system	220V + engine
Water pressure system	electrical
Owners cabin	double bed + single bed
Wardrobe	hanging/drawers/shelves
Bathroom	en suite
Toilet	en suite
Toilet system	electric



CLASSIC DUTCH MOTORSAILER

Wash basin	in the bathroom
Shower	en suite
Guest cabin 1	twin single
Wardrobe	hanging/drawers/shelves
Bathroom	shared
Toilet	shared
Toilet system	electric
Wash basin	in the cabin
Shower	shared
Guest cabin 2	twin single
Wardrobe	hanging and shelves
Bathroom	shared
Toilet	shared
Toilet system	electric
Wash basin	in the bathroom
Shower	shared
Guest cabin 3	twin single
Wardrobe	hanging and shelves
Bathroom	shared
Toilet	shared
Toilet system	electric
Wash basin	in the bathroom
Shower	shared
Crew cabin(s)	1
Bathroom (crew)	Bunk bed
Toilet (crew)	yes
Toilet system	electric
Wash basin	in the bathroom
Shower (crew)	yes

MACHINERY



CLASSIC DUTCH MOTORSAILER

No of engines	2
Make	Volvo
Type	TAMD 70
HP	290
kW	213.15
Fuel	diesel
Maximum speed (kn)	11
Cruising speed (kn)	9
Engine hours	1200
Engine cooling system	freshwater heat exchanger
Drive	shaft
Shaft seal	yes
Engine controls	electrical
Gearbox	hydraulic
Bowthruster	electric
Propeller type	fixed
Propeller blades	5
Propeller shaft material	stainless steel
Shaft lubrication	grease
Manual bilge pump	yes
Electric bilge pump	yes
Electrical installation	yes
Generator	Onan 13,5 Kw
Batteries	yes
Start battery	yes
Service battery	yes
Battery monitor	yes
Battery charger	yes
Shorepower	with cable
Watermaker	130 l/h



CLASSIC DUTCH MOTORSAILER

NAVIGATION

Compass	yes
Depth sounder	yes
Log	yes
Windset	yes
Repeater	yes
VHF	yes
Autopilot	yes
Rudder angle indicator	yes
Radar	JRC
GPS	yes
Plotter	2 x
Navigation lights	yes
Searchlight	yes

EQUIPMENT

Bimini	yes
Sun awning	yes
Winter cover	yes
Cockpit cushions	yes
Cockpit table	yes
Cockpit chairs	yes
Boarding ladder	aluminum
Gangway	yes
Anchor	yes
Anchor chain	yes
Anchor 2	yes
Anchor chain	yes
Windlass	2 x
Sea railing	yes
Grab rail (superstructure)	yes



CLASSIC DUTCH MOTORSAILER

Pushpit	yes
Pulpit	yes
Wiper	yes
Clearview window	yes
Fenders	yes
Mooring lines	yes
Spare parts	yes
Tools	yes
Radio	yes
Clock - barometer	yes

RIGGING

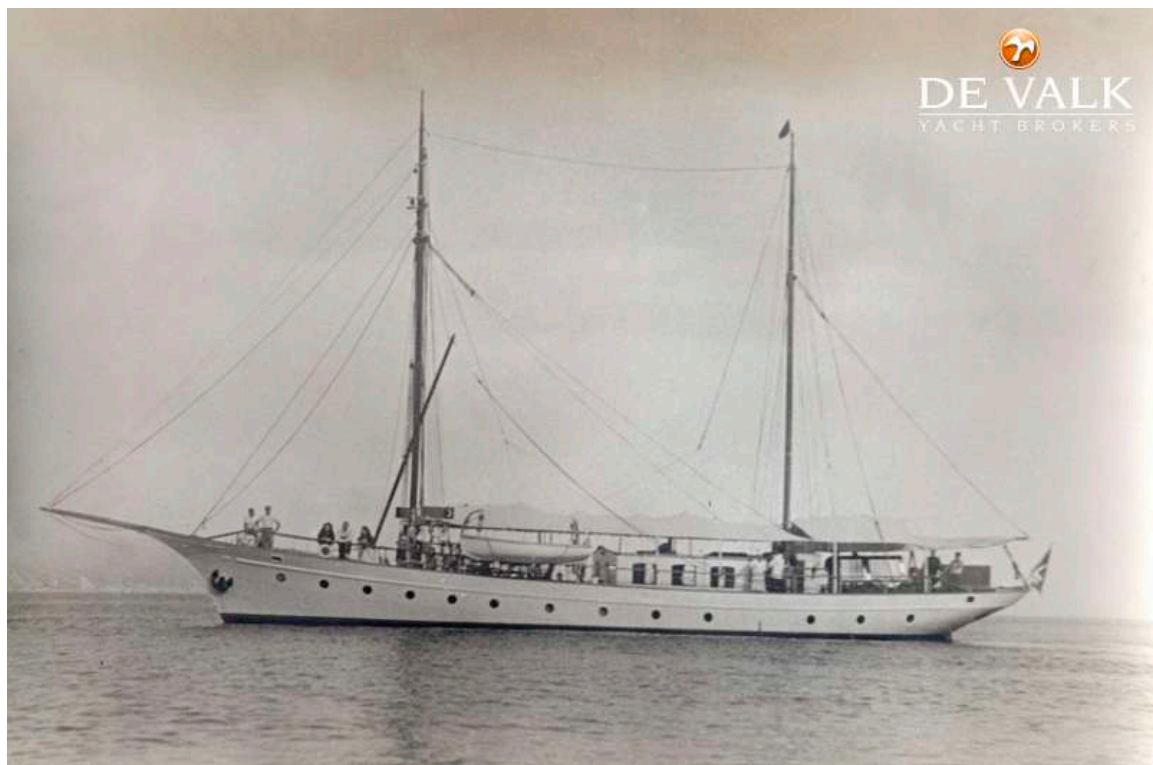
Rigging	ketch
Standing rigging	wire
Material mast	wood
Spreaders	Single
Mainsail	yes
Mainsail cover	yes
Cutterstay	yes
Mizzen	yes
Mizzen sailcover	yes
Jib	Self tacking
Staysail	yes
Yankee	yes
Reefing System	slabreefing
Halyard winches	4 x



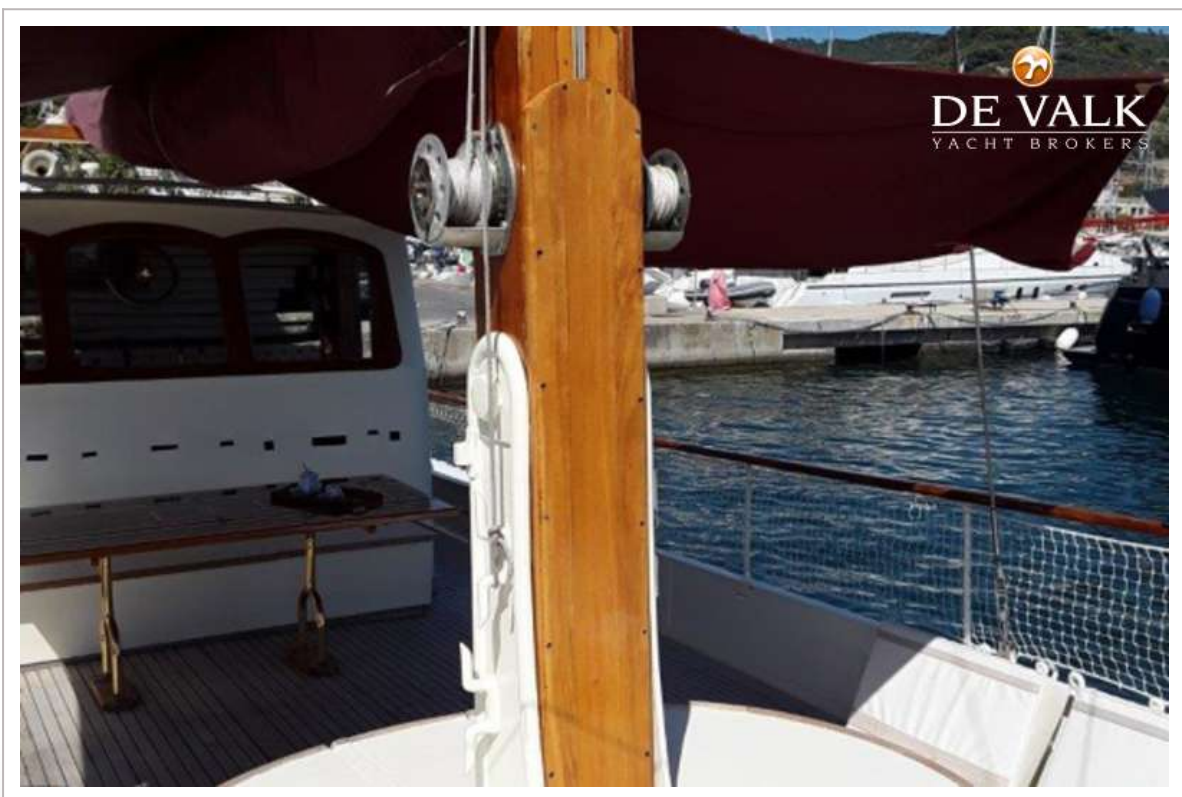
CLASSIC DUTCH MOTORSAILER



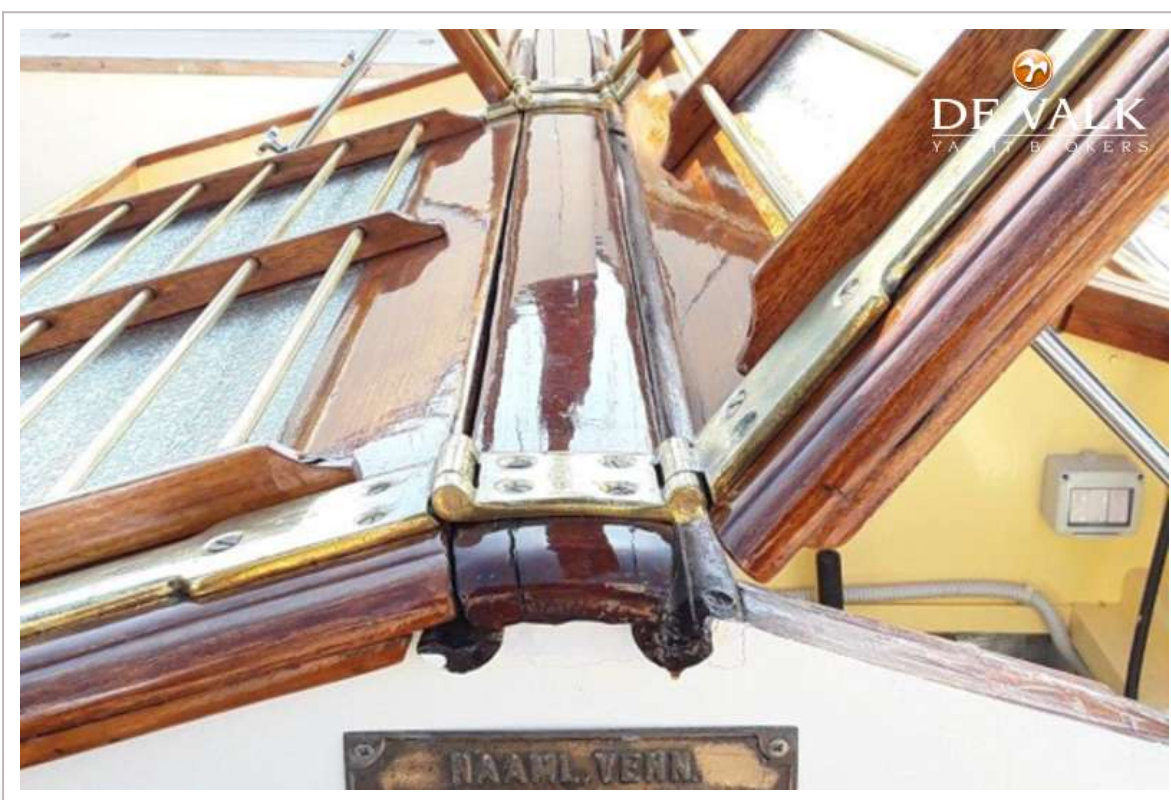
CLASSIC DUTCH MOTORSAILER



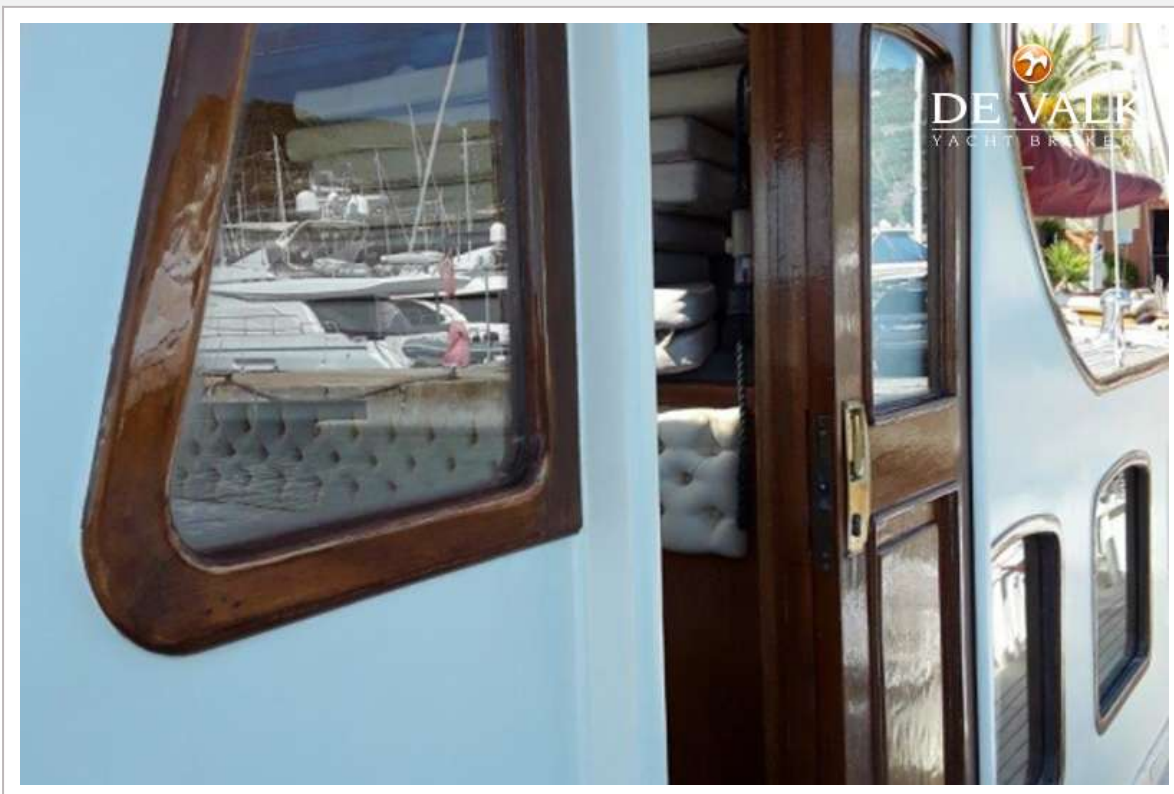
CLASSIC DUTCH MOTORSAILER



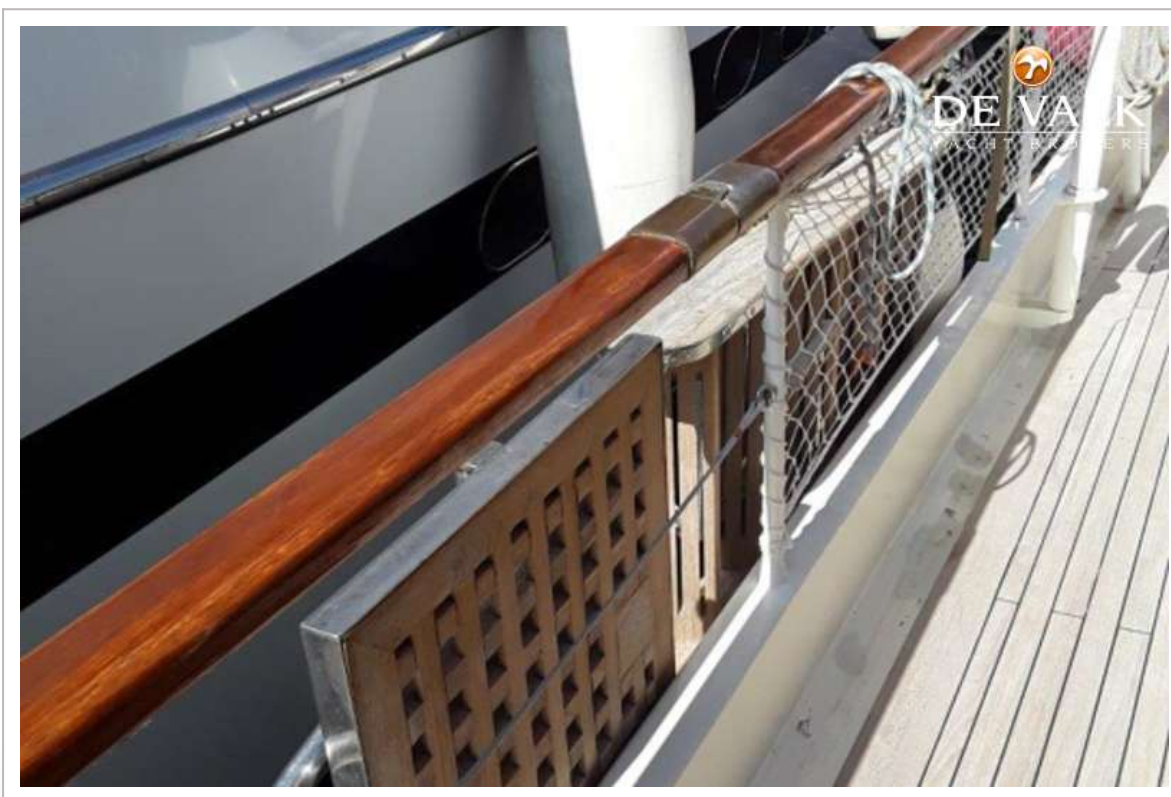
CLASSIC DUTCH MOTORSAILER



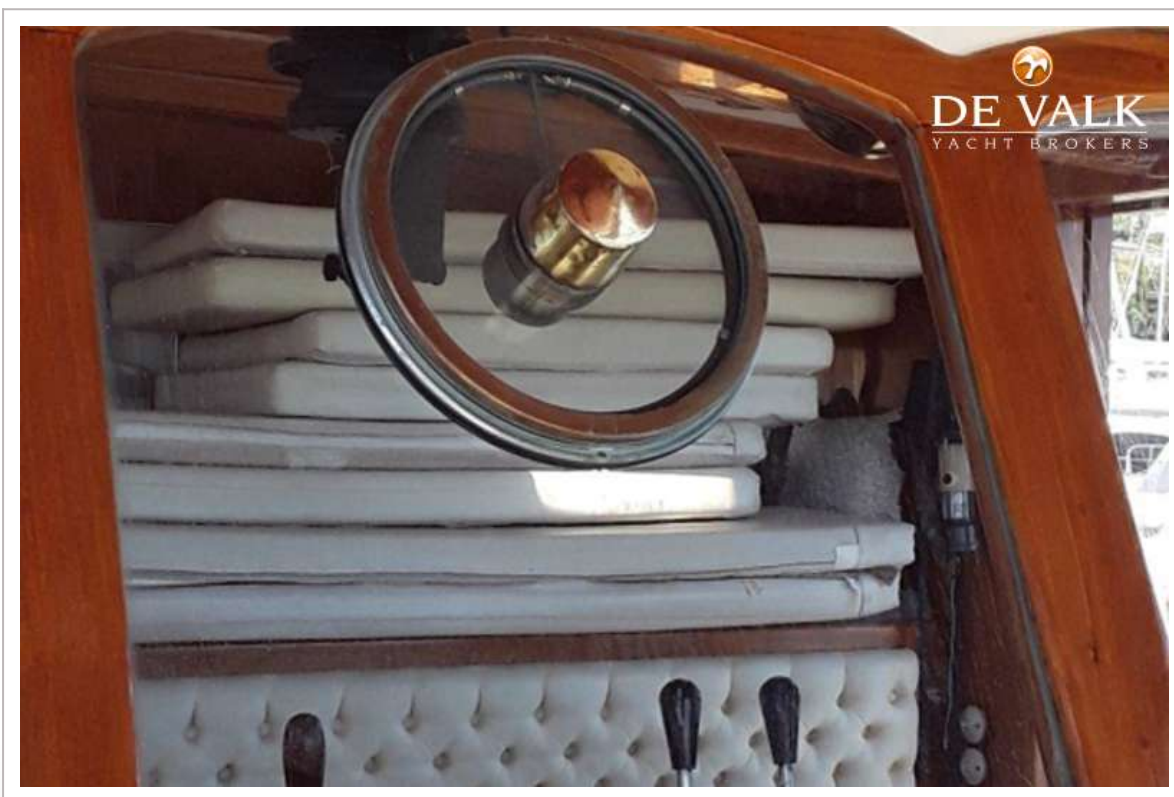
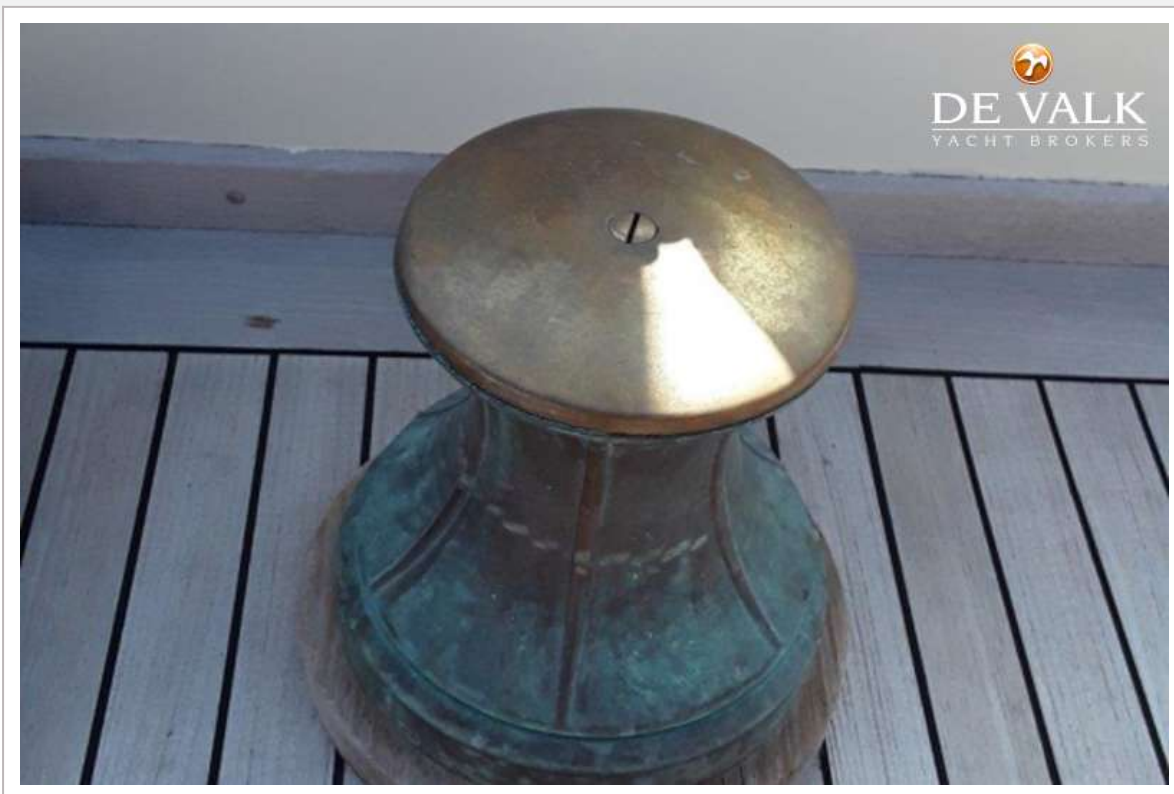
CLASSIC DUTCH MOTORSAILER



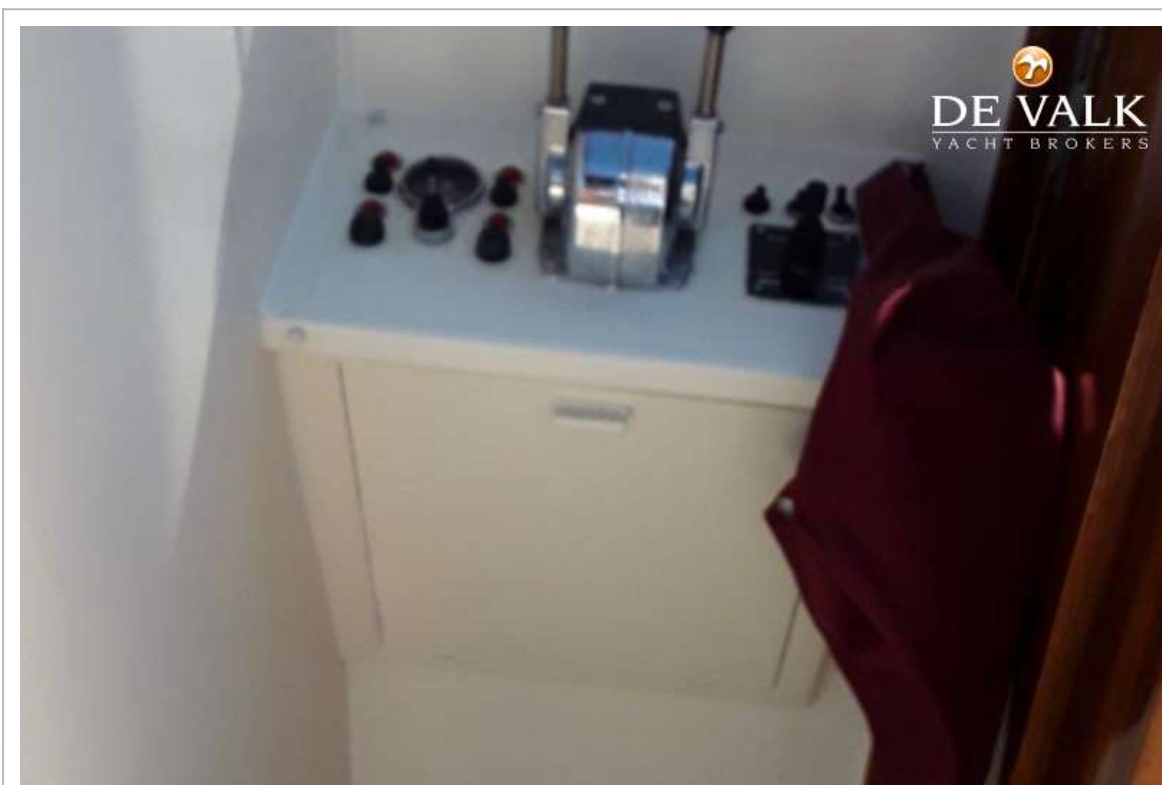
CLASSIC DUTCH MOTORSAILER



CLASSIC DUTCH MOTORSAILER



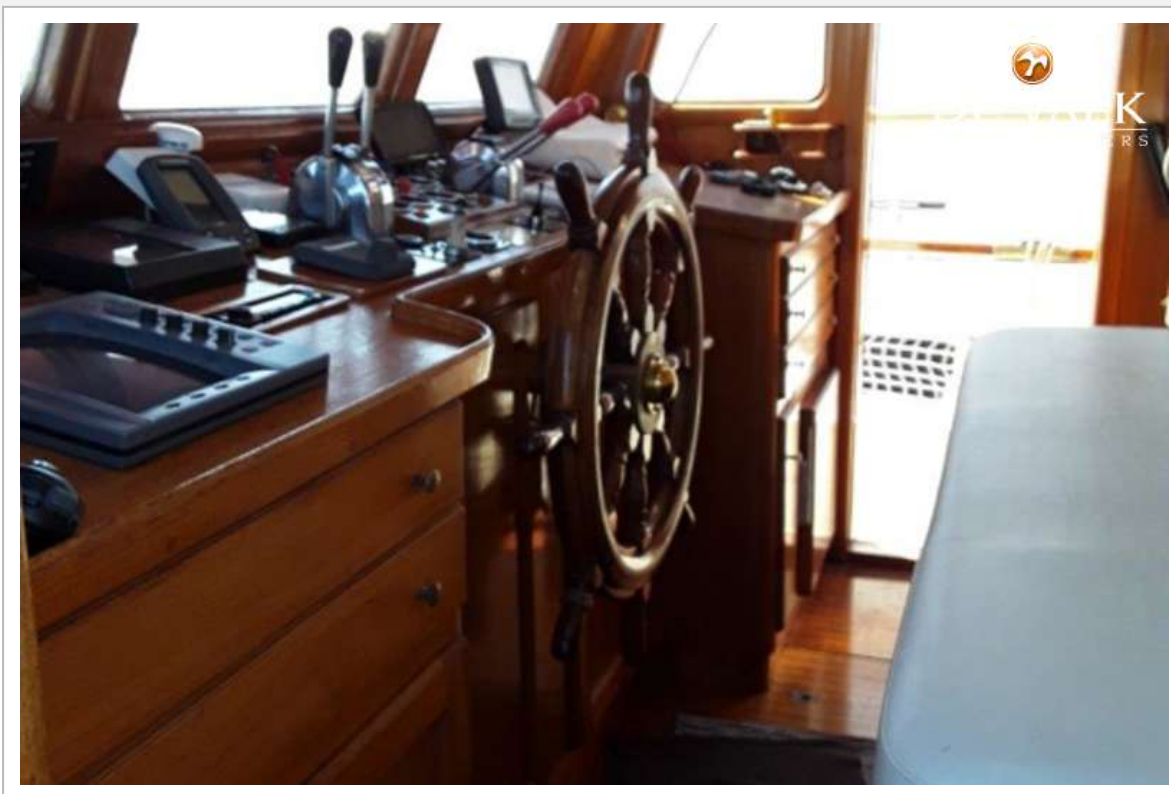
CLASSIC DUTCH MOTORSAILER



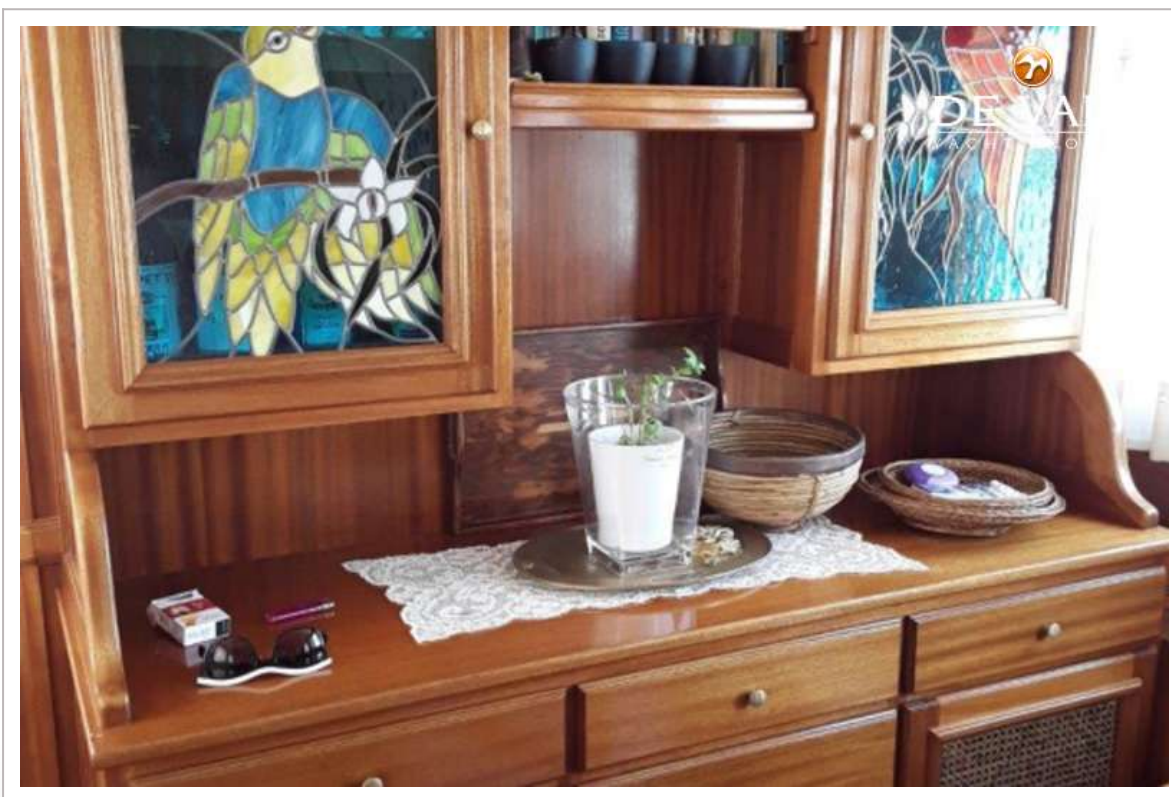
CLASSIC DUTCH MOTORSAILER



CLASSIC DUTCH MOTORSAILER



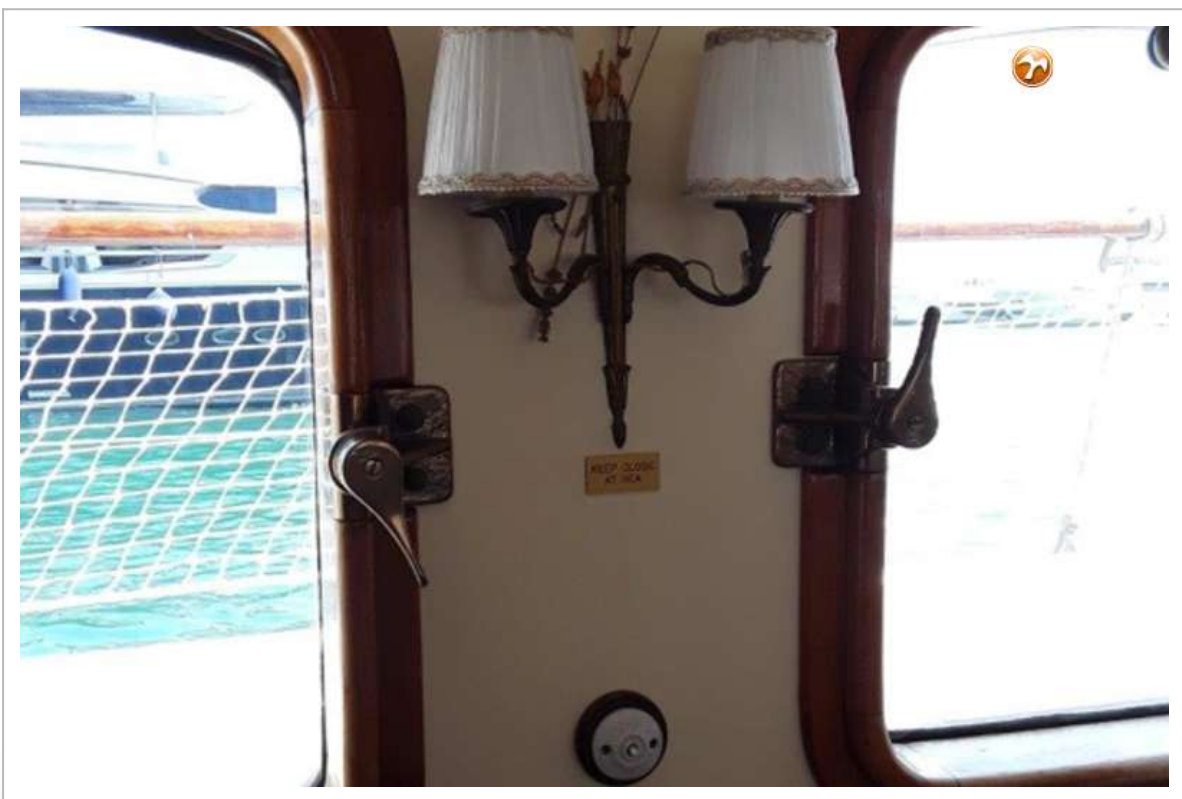
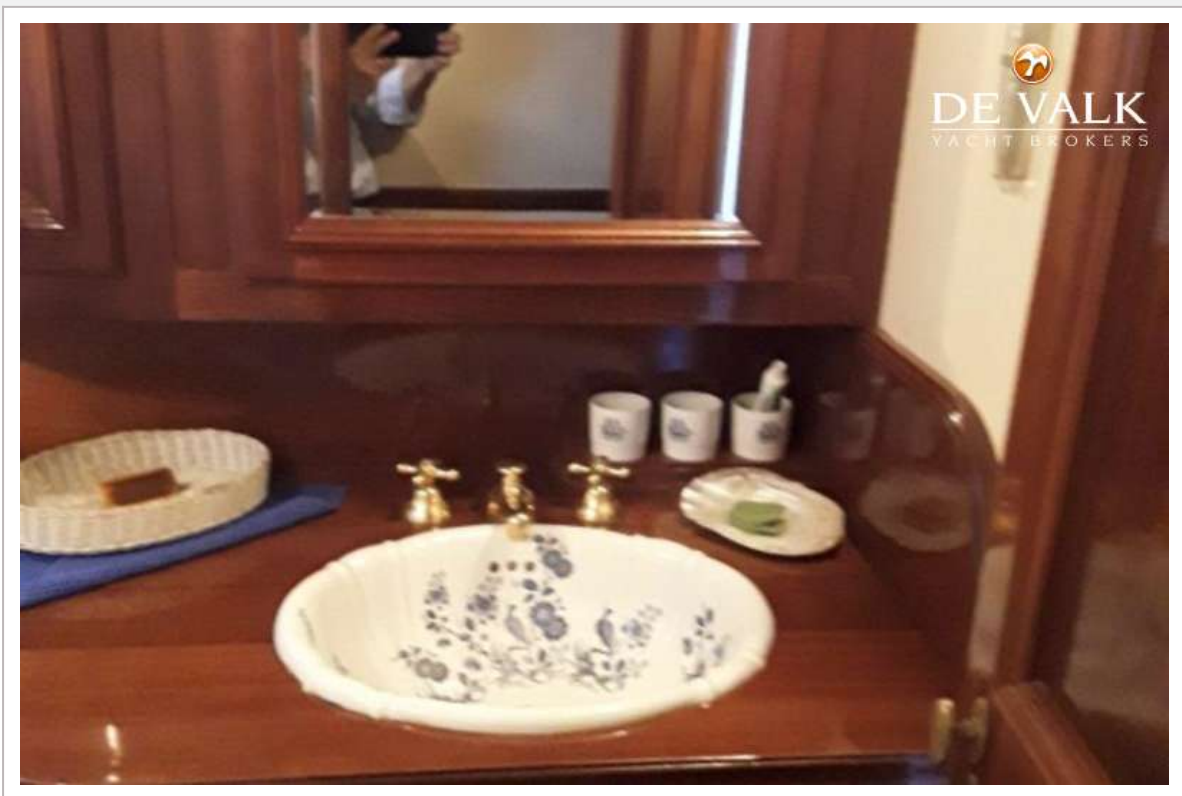
CLASSIC DUTCH MOTORSAILER



CLASSIC DUTCH MOTORSAILER



CLASSIC DUTCH MOTORSAILER



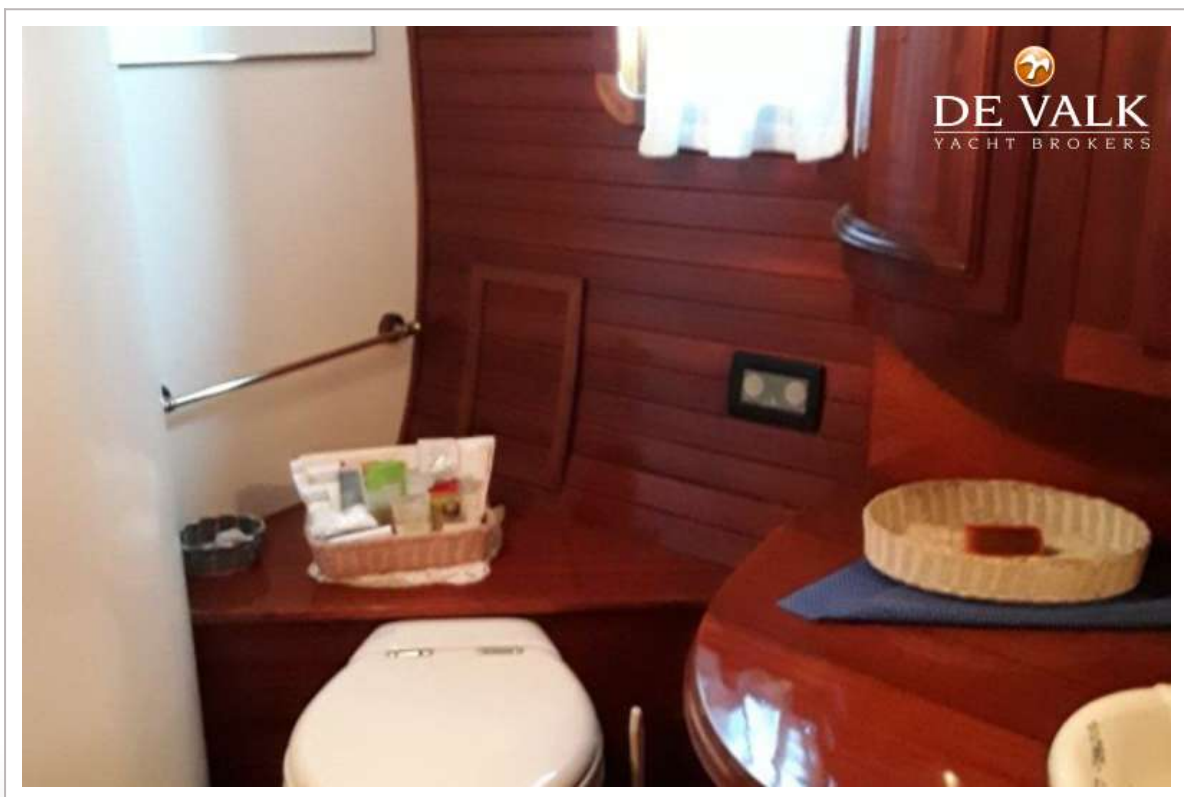
CLASSIC DUTCH MOTORSAILER



CLASSIC DUTCH MOTORSAILER



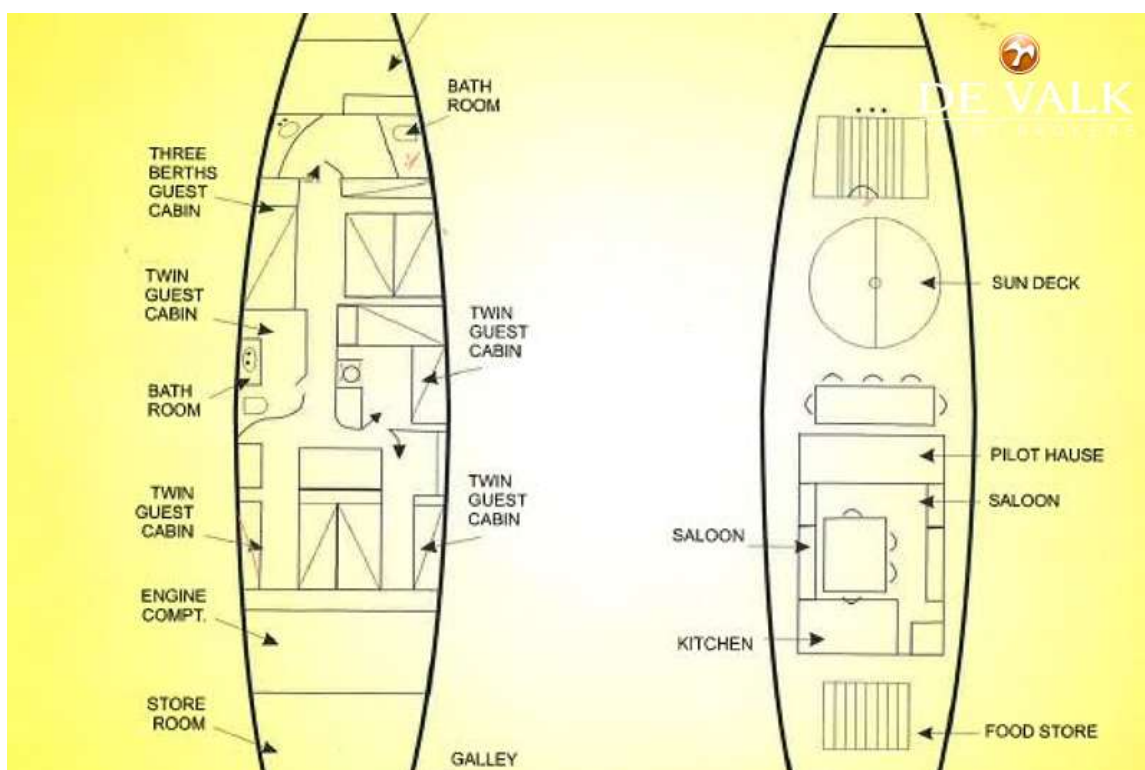
CLASSIC DUTCH MOTORSAILER



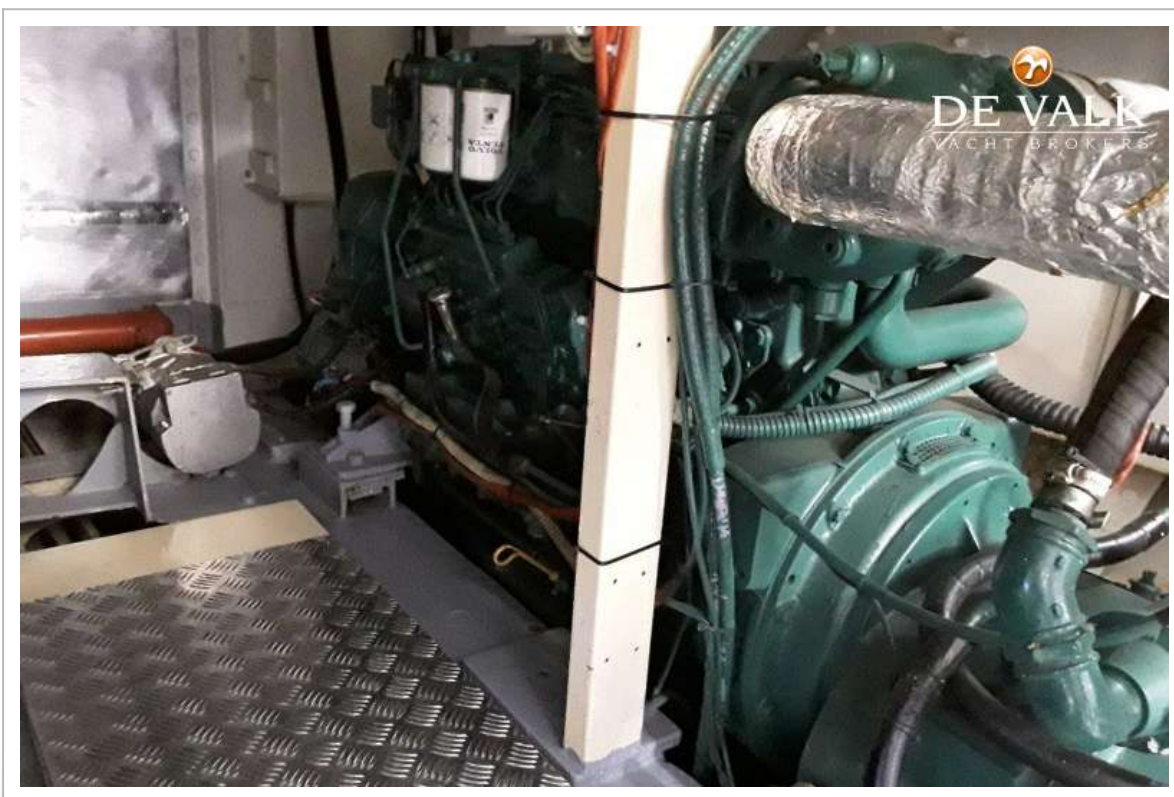
CLASSIC DUTCH MOTORSAILER



CLASSIC DUTCH MOTORSAILER



CLASSIC DUTCH MOTORSAILER



CLASSIC DUTCH MOTORSAILER

