



## CLASSIC YAWL



**DE VALK**  
YACHT BROKERS

# CLASSIC YAWL

## BROKER'S COMMENTS

The classic Yawl "Sky" is a true Gentlemen's yacht and she represents the true meaning of the word classic sailing yacht. Re-launched in 2017 after a complete rebuilt and Restoration following the advice of the renown Mr. Spencer including modern comfort, sailing and navigation aids. The classic Yawl "Sky" is a true "eye catcher"

*Hans Visser*

## SPECIFICATIONS

<b>Dimensions</b>	26.00 x 4.00 x 2.60 (m)	<b>Builder</b>	Thetis ware UK
<b>Built</b>	1890	<b>Cabins</b>	2
<b>Material</b>	Wood	<b>Berths</b>	6
<b>Engine(s)</b>	1 x Mercruiser D4.2L 6.cyl. T. diesel	<b>Hp/Kw</b>	220.00 (hp), 161.70 (kw)
<b>Asking price</b>	sold (VAT )	<b>Lying</b>	at sales office

## CONTACT

<b>Sales office</b>	De Valk Amsterdam B.V.	<b>Telephone</b>	+31 (0)35 5829014
<b>Address</b>	Marinaweg 8 (postal address) 1361 AC Almere NL	<b>E-mail</b>	amsterdam@devalk.nl

## DISCLAIMER

These particulars are given in good faith as supplied but cannot be guaranteed.



# CLASSIC YAWL

## GENERAL

<b>Model</b>	CLASSIC YAWL
<b>Type</b>	sailing yacht
<b>LOA (m)</b>	26,00
<b>LWL (m)</b>	14,75
<b>Beam (m)</b>	4,00
<b>Draft (m)</b>	2,60
<b>Air draft (m)</b>	23,50
<b>Headroom (m)</b>	1,80
<b>Year built</b>	1890
<b>Launched</b>	2019 after full refit
<b>Builder</b>	Thetis ware UK
<b>Country</b>	Great Britain
<b>Displacement (t)</b>	45
<b>Ballast (tonnes)</b>	15
<b>Gross tonnage</b>	7
<b>Net tonnage</b>	6
<b>CE norm</b>	NA
<b>Hull material</b>	wood
<b>Hull colour</b>	white
<b>Hull thickness (mm)</b>	50
<b>Hull shape</b>	S-bilged
<b>Keel type</b>	long keel
<b>Superstructure material</b>	wood Burmese Teak
<b>Deck material</b>	wood
<b>Deck finish</b>	teak Burmese Teak on marine ply on traverse frames
<b>Superstructure deck finish</b>	teak Burmese Teak on marine ply on traverse frames
<b>Cockpit deck finish</b>	teak Burmese Teak on marine ply on traverse frames
<b>Antifouling (year)</b>	2019, black
<b>Dorades</b>	Copper
<b>Window frame</b>	brass Opening



# CLASSIC YAWL

<b>Window material</b>	Layered glass rened at refit
<b>Deckhatch</b>	Teak
<b>Portholes</b>	brass
<b>Fuel tank (litre)</b>	stainless steel 500 L.
<b>Level indicator (fuel tank)</b>	yes
<b>Freshwater tank (litre)</b>	stainless steel 250 L with carbon filter
<b>Level indicator (freshwater)</b>	yes
<b>Blackwater tank (litre)</b>	GRP 120 L.
<b>Level indicator (blackwater)</b>	yes
<b>Blackwater tank extraction</b>	deck extraction + pump
<b>Greywater tank (litre)</b>	stainless steel 60 L with direct overboard pump.
<b>Level indicator (greywater)</b>	yes
<b>Wheel steering</b>	powersteer
<b>Emergency tiller</b>	yes
<b>More info on paintwork</b>	Last painted in 2012 off white two component system
<b>Extra info</b>	Iroko hull (50 mm) on oak frames (45 mm)
<b>Extra info</b>	LOD 19,50, bowsprit about 4,5, stern stock about 1,25
<b>Extra info</b>	Teak hull on oak frames

## ACCOMMODATION

<b>Cabins</b>	2
<b>Berths</b>	6
<b>Interior</b>	mahogany High gloss varnish
<b>Layout</b>	Owner
<b>Floor</b>	teak and holly
<b>Open cockpit</b>	yes
<b>Doghouse</b>	In 40 MM Teak and sliding hatch
<b>Saloon</b>	yes
<b>Headroom saloon (m)</b>	1,80
<b>Air-conditioning</b>	reverse cycle airco 2 x Marine air 7000 & 12000 BTU both overhauled in 2012



# CLASSIC YAWL

Navigation center	yes
Chart table	yes
Aft Cabin	yes
Sliding door to cockpit	yes
Galley	yes
Countertop	granite
Sink	Composite
Cooker	ceramic 2 burner Schott
Extractor	yes
Microwave	LG
Fridge	Frigobar 40 L and 1 x cusom 60 L.
Freezer	With new compressor
Hot water system	220V + engine 40 L.
Water pressure system	electrical 24 V
Crockery	yes
Owners cabin	double bed + single bed
Bed length (m)	2,10
Wardrobe	hanging/drawers/shelves
Bathroom	shared
Toilet	shared
Toilet system	vacuum
Wash basin	in the bathroom
Shower	shared
Guest cabin 1	twin single
Bed length (m)	2
Wardrobe	hanging/drawers/shelves
Bathroom	shared
Toilet	shared
Extra info	Forced mechanical ventilation (2012) with double speed

## MACHINERY



# CLASSIC YAWL

<b>No of engines</b>	1
<b>Make</b>	MerCruiser
<b>Type</b>	D4.2L 6.cyl. T.
<b>HP</b>	220
<b>kW</b>	161,70
<b>Fuel</b>	diesel
<b>Year installed</b>	2000
<b>Year of overhaul</b>	2017
<b>Maximum speed (kn)</b>	9
<b>Cruising speed (kn)</b>	7,5
<b>Range (nm)</b>	400
<b>Engine hours</b>	1481
<b>Engine cooling system</b>	freshwater heat exchanger Wet exhaust and water lock
<b>Drive</b>	shaft
<b>Shaft seal</b>	Grease and water lubricated at shaft ends
<b>Engine controls</b>	mechanical
<b>Gearbox</b>	hydraulic PRM, 750C3-2.5 (new 2010) with 2,5:1 reduction
<b>Propeller type</b>	fixed Bronze
<b>Propeller blades</b>	3
<b>Propeller shaft material</b>	stainless steel New 2017
<b>Shaft lubrication</b>	grease Water lubricated at shaft ends
<b>Manual bilge pump</b>	1 x
<b>Electric bilge pump</b>	2 x 24 V (2012) auto/manual swith and non return valves
<b>Bilge alarm</b>	yes
<b>Electrical installation</b>	12 & 24 V DC & 230 V AC
<b>Generator</b>	dry exhaust Nanni Power 6 kVA @ 230 V AC (2009)
<b>Running hours generator</b>	80
<b>Batteries</b>	All AGM maintenance free
<b>Start battery</b>	1 x 145 A 24 V (2 x 12 V)
<b>Service battery</b>	1 x 415 AV 24 V & 1 x 335 AV 24 V all 6 V cells
<b>Generator battery</b>	12 V dry cell 85 Ah
<b>Battery monitor</b>	yes



# CLASSIC YAWL

<b>Battery charger</b>	3 x All Mastervolt of 15, 50 and 75 Ah 24 V
<b>Inverter</b>	2 x Mastervolt of 500 and 2500 Watt
<b>Shorepower</b>	with cable For both 16 and 32 Amp 230 V AC
<b>Extra info</b>	Hydropack
<b>Extra info</b>	3 x 24V-12V Mastervolt converters
<b>Extra info</b>	RPM and hour counter defect

## NAVIGATION

<b>Compass</b>	Magnetic in Brass
<b>Electric compass</b>	Raytheon
<b>Depth sounder</b>	Raymarine ST60 Tri data 2016
<b>Log</b>	Raytheon ST 80
<b>Windset</b>	Raytheon ST60
<b>Repeater</b>	3 x Raytheon ST290
<b>VHF</b>	Raymarine Ray 49e (2015) & Simrad RD68
<b>Autopilot</b>	Raytheon St 6000 (1997)
<b>Rudder angle indicator</b>	Raytheon ST 6000
<b>Radar</b>	Raymarine C70 see radar/gps/plotter
<b>GPS</b>	Raystar C70 see radar/gps/plotter
<b>Plotter</b>	Raymarine see radar/gps/plotter
<b>Radar/GPS/plotter</b>	Raymarine C70
<b>AIS transponder</b>	Conmar type -3R
<b>EPIRB</b>	Kannad type: 406 mhz cospas sarsat
<b>Navigation lights</b>	yes

## EQUIPMENT

<b>Window cover</b>	yes
<b>Cockpit cushions</b>	yes
<b>Cockpit table</b>	yes
<b>Gangway</b>	Teak
<b>Anchor</b>	1 x 20 kg galvanised drag anchor



# CLASSIC YAWL

<b>Anchor chain</b>	1 x 40 m. stainless steel & 1 x 50 M stainless steel
<b>Windlass</b>	electrical 2 horizontal on 1 windlass
<b>Capstan</b>	electrical
<b>Sea railing</b>	
<b>Grab rail (superstructure)</b>	
<b>Pushpit</b>	yes
<b>Pulpit</b>	yes
<b>Life raft</b>	valise (or bag) 2 x avon ISO9650
<b>Life raft (pers)</b>	2 x 8
<b>Last life raft survey</b>	Need service
<b>Lifejackets</b>	6
<b>Lifebuoy</b>	2
<b>Fenders</b>	4
<b>Mooring lines</b>	4
<b>Spare parts</b>	yes
<b>Tools</b>	yes
<b>TV</b>	Philips
<b>Radio</b>	Fusion MS-RA205
<b>Radio-cd player</b>	yes
<b>DVD player</b>	yes
<b>iPod connection</b>	yes
<b>Surround Sound System</b>	yes
<b>Cockpit speakers</b>	yes
<b>Speakers in salon</b>	yes
<b>Clock - barometer</b>	yes
<b>Fire extinguisher</b>	2 x 1 kg portable

## RIGGING

<b>Rigging</b>	yawl
<b>Standing rigging</b>	wire
<b>Material mast</b>	wood



# CLASSIC YAWL

<b>Spreaders</b>	1 set on main mast (2019)
<b>Keel stepped mast</b>	yes
<b>Mainsail</b>	Dacron, North sails, 1999, 80.0 m2
<b>Mainsail cover</b>	Stellendam Marilux beige
<b>Cutterstay</b>	yes
<b>Topsail</b>	Dacron, Stellendam, 2013, 28.8 m2
<b>Mizzen</b>	Dacron, North sails, 1999, 25.0 m2
<b>Mizzen sailcover</b>	Stellendam Marilux beige
<b>Jib</b>	Dacron, Piere Samar, 2000, 34.0 m2
<b>Jib I</b>	Nylon Top sail 21,3 m2
<b>Staysail</b>	Dacron, North Sails 1999 18.0m2 Self tacking
<b>Reefing System</b>	slabreefing
<b>Primary sheet winch</b>	Meissner custom CMB 34-H hydraulic (1999) bronze two speed
<b>Secondary sheet winch</b>	Meissner custom CMB 34-Hydraulic (1999) bronze two speed
<b>Genoa sheetwinches</b>	Meissner custom CMB 34-H (1999) bronze two speed
<b>Halyard winches</b>	2 x Barlow 24 custom bronze 2 speed
<b>Winchcovers</b>	yes
<b>Spi-pole</b>	wood
<b>Extra info</b>	All synthetic running rigging replaced in 2006
<b>Extra info</b>	Total sail area approx 207,10 m2



# CLASSIC YAWL



# CLASSIC YAWL



# CLASSIC YAWL



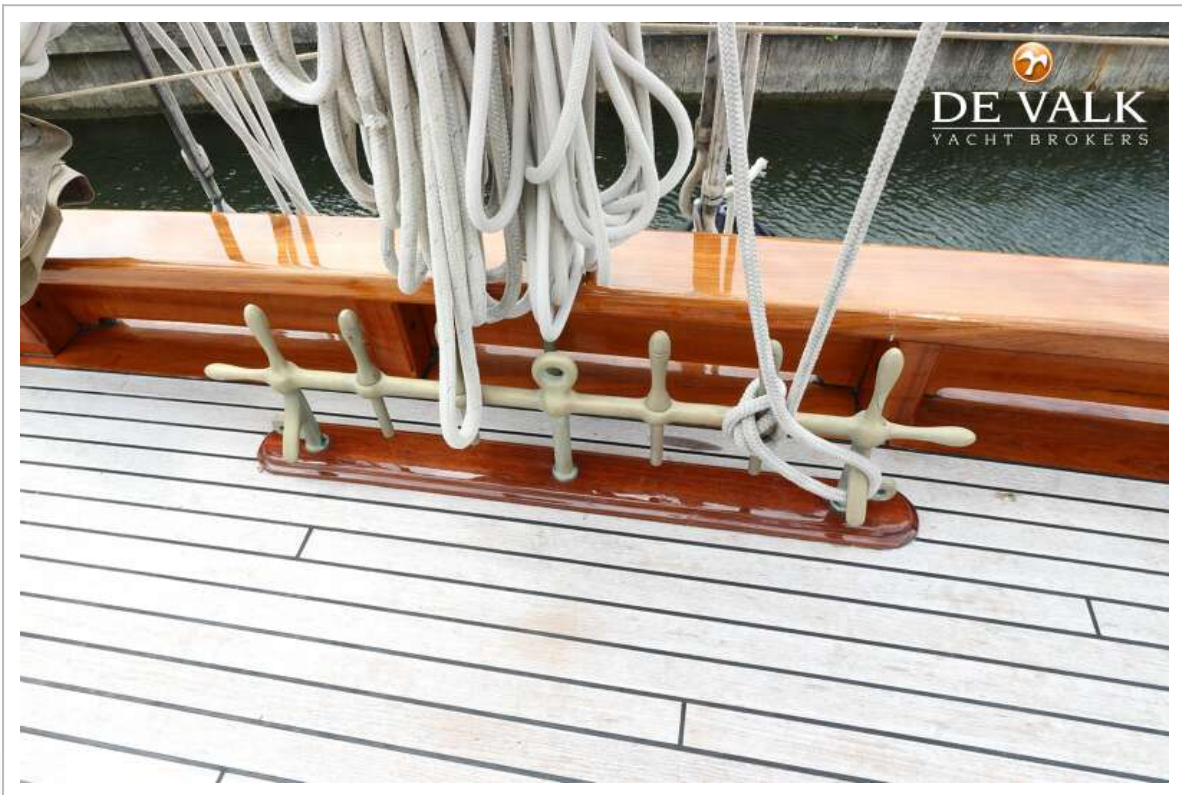
# CLASSIC YAWL



# CLASSIC YAWL



# CLASSIC YAWL



# CLASSIC YAWL



# CLASSIC YAWL



# CLASSIC YAWL



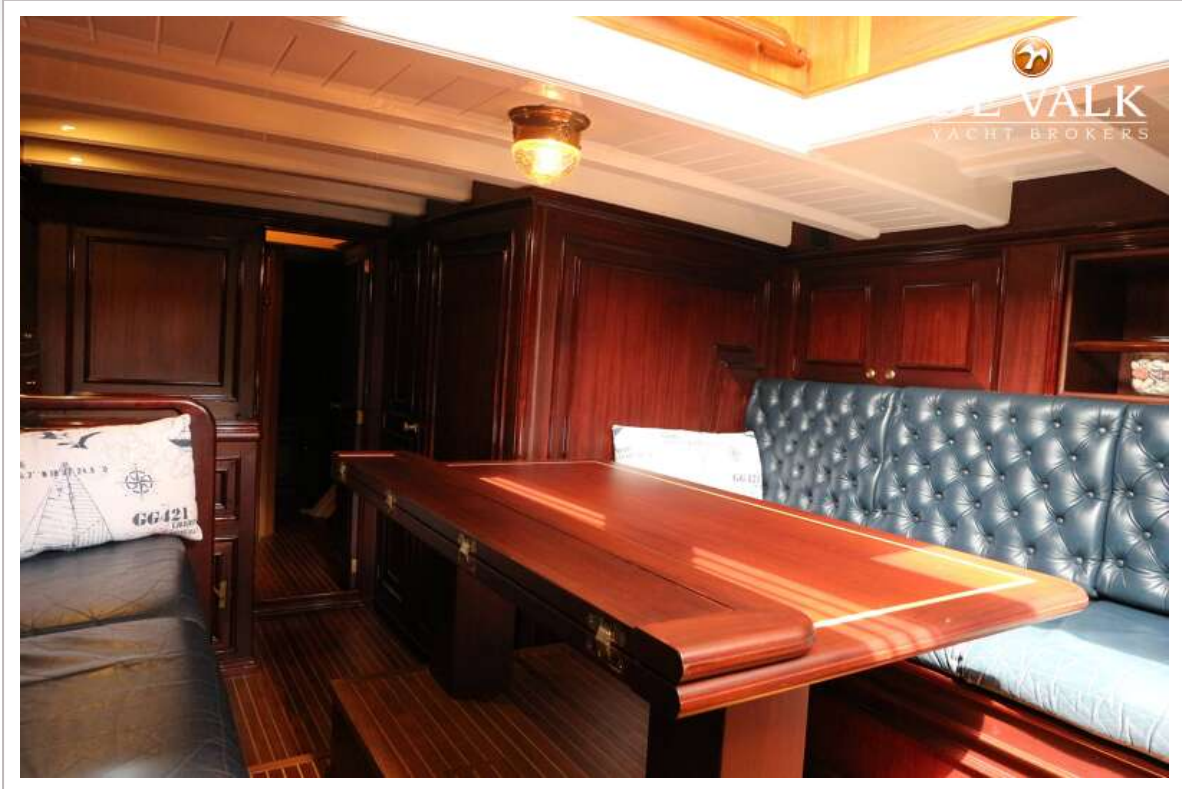
# CLASSIC YAWL



# CLASSIC YAWL



# CLASSIC YAWL



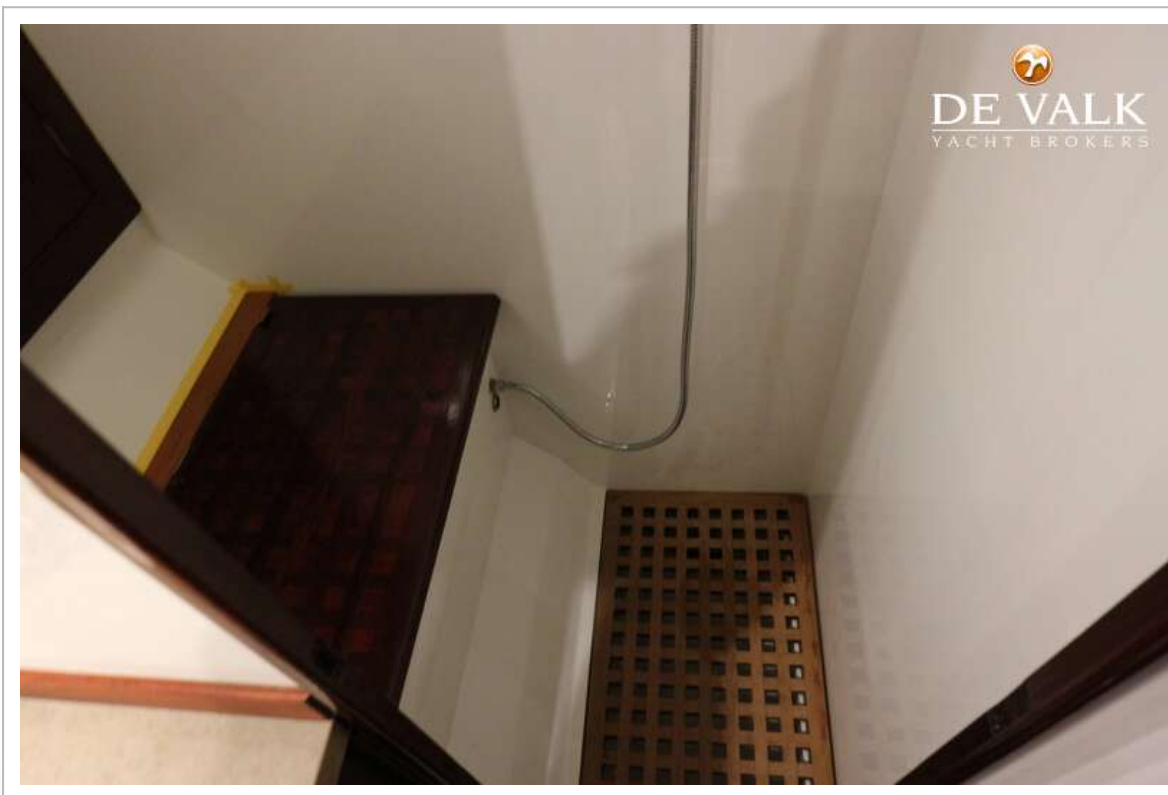
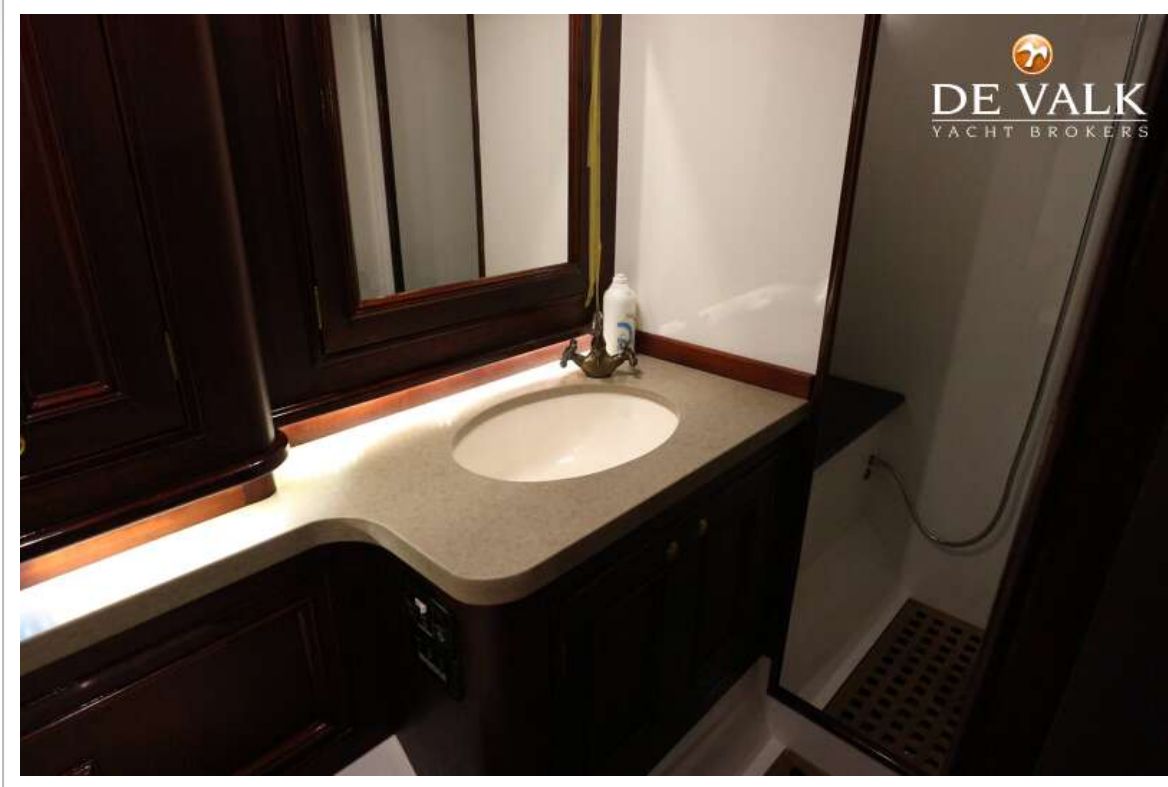
# CLASSIC YAWL



# CLASSIC YAWL



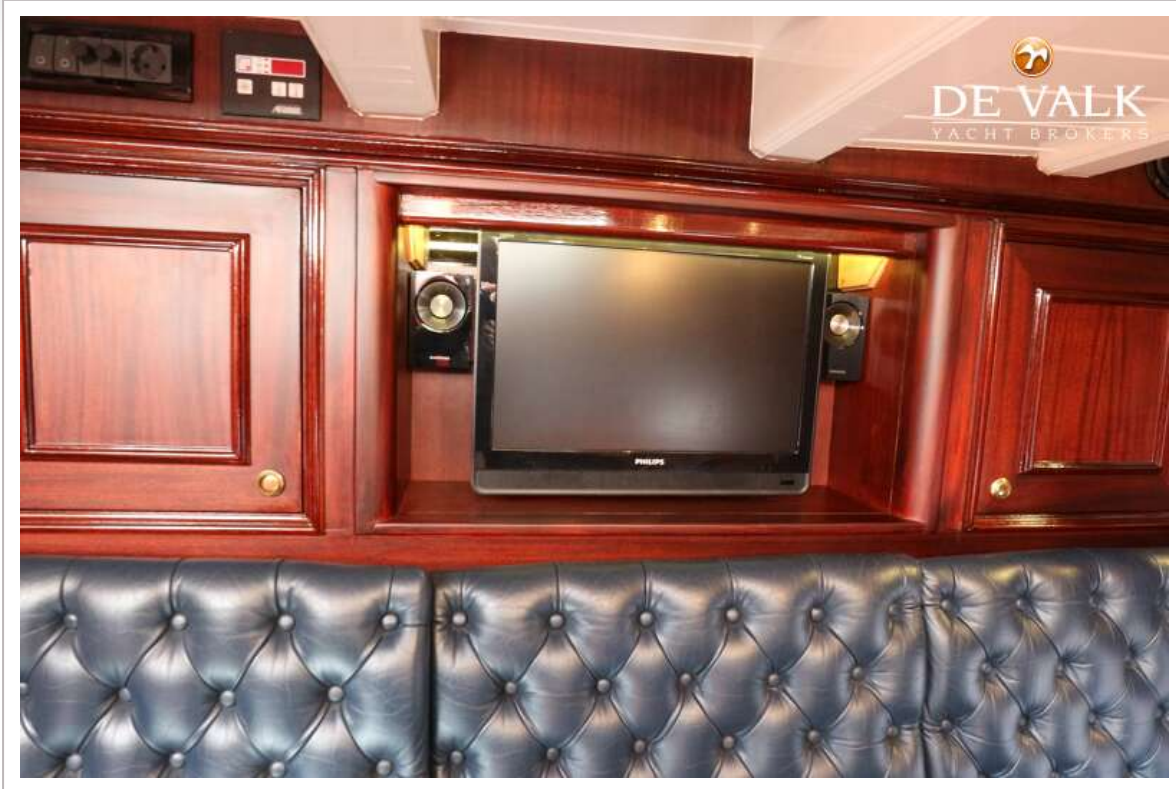
# CLASSIC YAWL



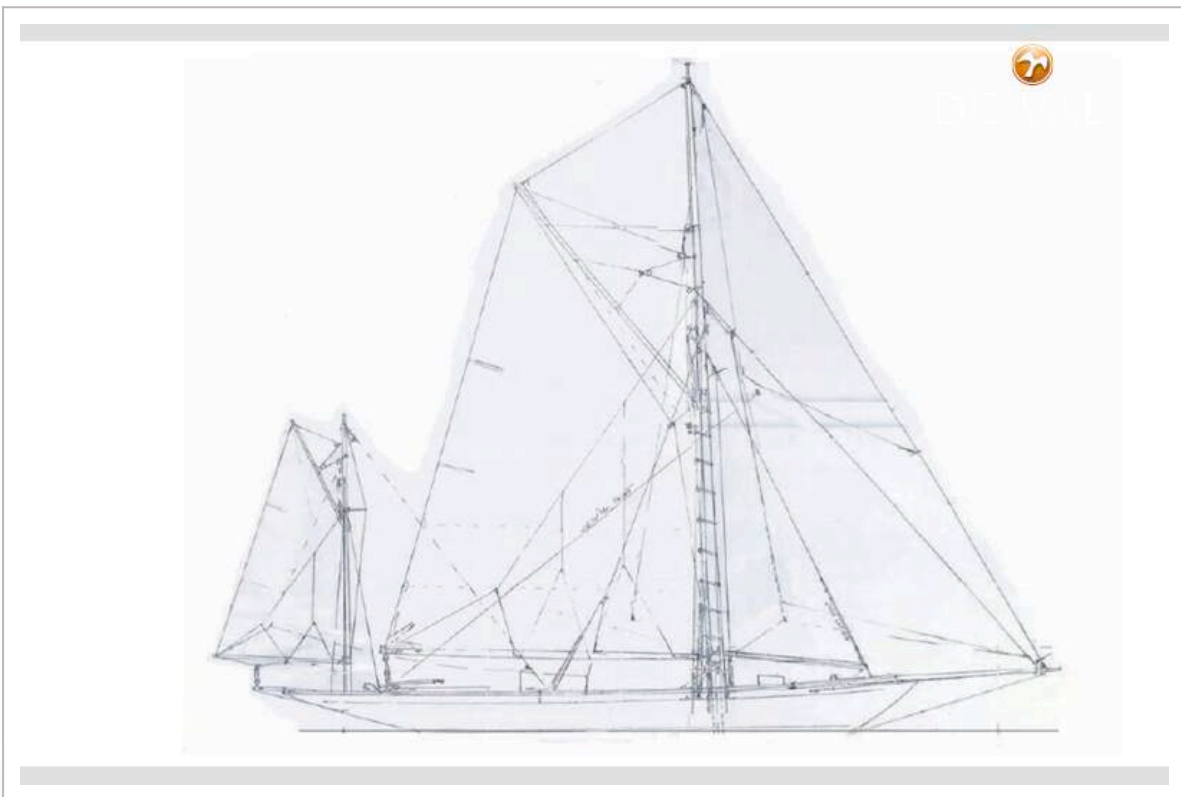
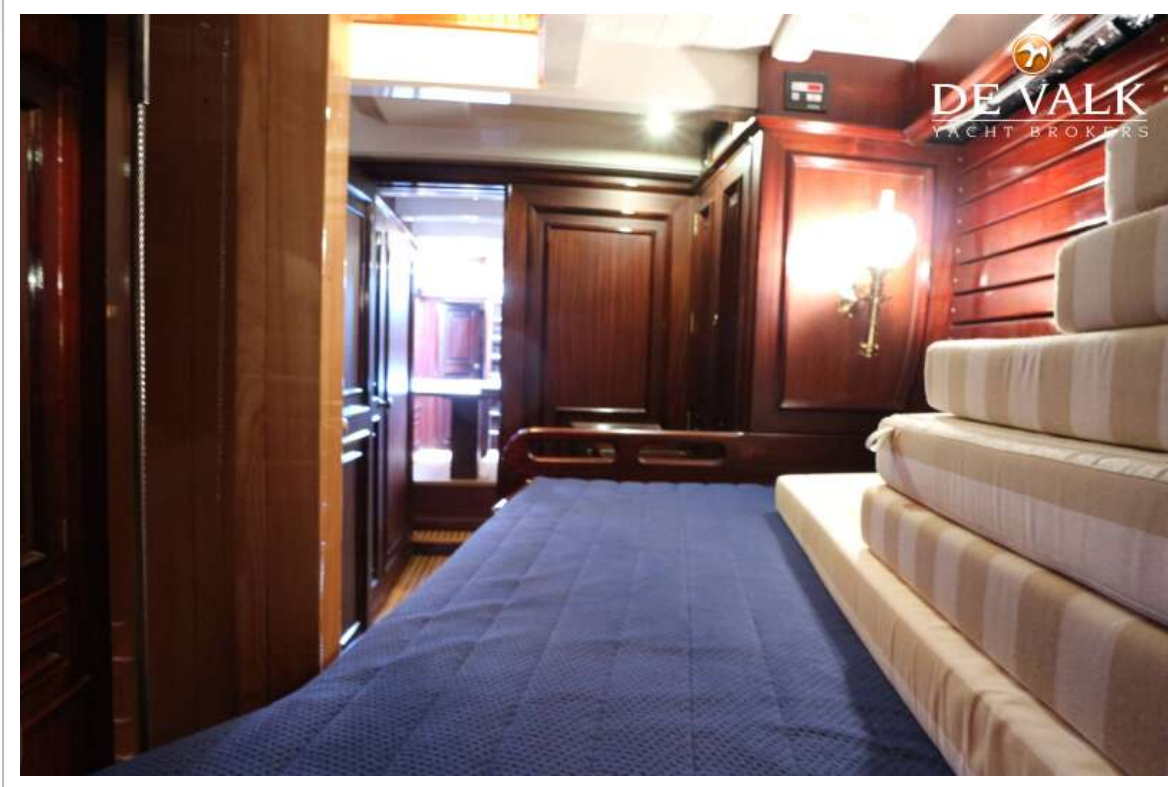
# CLASSIC YAWL



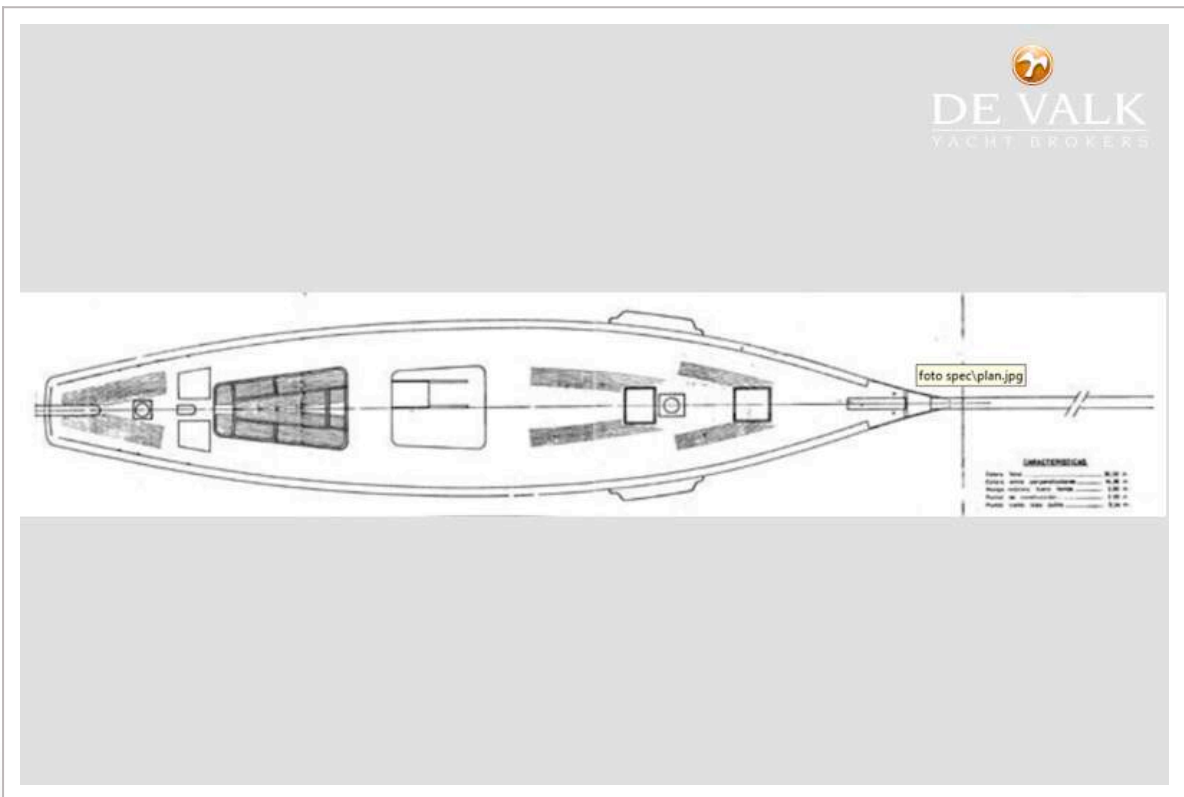
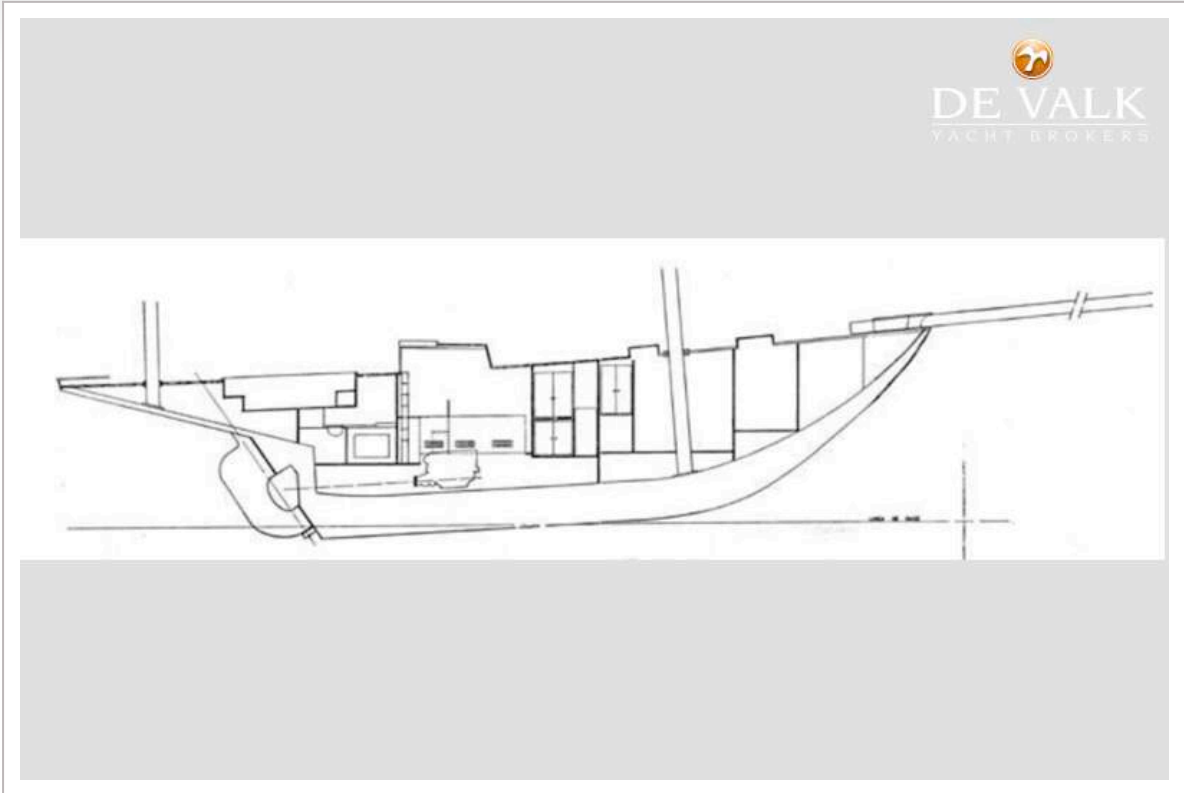
# CLASSIC YAWL



# CLASSIC YAWL



# CLASSIC YAWL



# CLASSIC YAWL

