



DE VALK  
YACHT BROKERS



## VAN DE STADT 50 PACIFIC II



DE VALK  
YACHT BROKERS

# VAN DE STADT 50 PACIFIC II

## BROKER'S COMMENTS

The Van de Stadt 50 Pacific II, long distance cruiser. Israeli Tax paid Her sturdy and strong steel construction ensures a safe passage to anywhere in the world. The proven concept of the van de Stadt 50 Pacific II has sail handling simple and easy. Call for or email more info on this ideal Van de Stadt 50 Pacific II world cruiser.

*Hans Visser*

## SPECIFICATIONS

<b>Dimensions</b>	15.13 x 4.60 x 2.20 (m)	<b>Builder</b>	custom made
<b>Built</b>	1996	<b>Cabins</b>	3
<b>Material</b>	Steel	<b>Berths</b>	9
<b>Engine(s)</b>	1 x Perkins Prima diesel	<b>Hp/Kw</b>	120.00 (hp), 88.00 (kw)
<b>Asking price</b>	sold (VAT )	<b>Lying</b>	contact Amsterdam

## CONTACT

<b>Sales office</b>	De Valk Amsterdam B.V.	<b>Telephone</b>	+31 (0)35 5829014
<b>Address</b>	Marinaweg 8 (postal address) 1361 AC Almere NL	<b>E-mail</b>	amsterdam@devalk.nl

## DISCLAIMER

These particulars are given in good faith as supplied but cannot be guaranteed.



# VAN DE STADT 50 PACIFIC II

## GENERAL

<b>Model</b>	VAN DE STADT 50 PACIFIC II
<b>Type</b>	sailing yacht
<b>LOA (m)</b>	15,13
<b>LWL (m)</b>	12,50
<b>Beam (m)</b>	4,60
<b>Draft (m)</b>	2,20
<b>Air draft (m)</b>	20,20
<b>Headroom (m)</b>	1,98
<b>Year built</b>	1996
<b>Builder</b>	Custom made
<b>Country</b>	Israel
<b>Designer</b>	Van der stadt
<b>Displacement (t)</b>	20
<b>Hull material</b>	steel
<b>Hull colour</b>	white
<b>Hull thickness (mm)</b>	6 mm
<b>Hull shape</b>	multi hard chine
<b>Keel type</b>	fin keel
<b>Superstructure (mm)</b>	4
<b>Deck material</b>	steel
<b>Deck finish</b>	non-skid paint
<b>Superstructure deck finish</b>	non-skid paint
<b>Cockpit deck finish</b>	teak
<b>Dorades</b>	4 x
<b>Window frame</b>	stainless steel
<b>Window material</b>	perspex
<b>Deckhatch</b>	2
<b>Portholes</b>	stainless steel 6 x fixed
<b>Radar arch</b>	
<b>Fuel tank (litre)</b>	steel 600



# VAN DE STADT 50 PACIFIC II

Fuel daytank (litre)	steel 200
Freshwater tank (litre)	steel 1500
Greywater tank (litre)	steel 450
Wheel steering	cable steering
Outside helm position	cable steering
Emergency tiller	yes
More info on hull	The hull was built over several years launched in 1996
Extra info	VAT paid in Israel, german Flaggenschein

## ACCOMMODATION

Cabins	3
Berths	9
Interior	mahogany
Floor	carpet
Open cockpit	yes
Saloon	yes
Headroom saloon (m)	1,80
Heating	diesel ducted hot air
Air-conditioning	single cycle airco Salon and owners cabin
Navigation center	yes
Chart table	yes
Aft Cabin	yes
Galley	yes
Countertop	wood
Sink	stainless steel
Cooker	calor gas 2 burner & grill plate
Oven	yes
Fridge	yes
Hot water system	220V + engine
Water pressure system	electrical
Manual and/or foot pump	yes



# VAN DE STADT 50 PACIFIC II

Owners cabin	double bed
Wardrobe	hanging and shelves
Bathroom	en suite
Toilet	en suite
Toilet system	manual
Wash basin	in the bathroom
Shower	en suite
Guest cabin 1	twin single
Bed length (m)	1,90
Wardrobe	hanging and shelves
Bathroom	en suite
Toilet	en suite
Toilet system	manual
Wash basin	in the bathroom
Shower	en suite
Guest cabin 2	single bed 4 x
Bed length (m)	1,90

## MACHINERY

No of engines	1
Make	Perkins
Type	Prima
HP	120
kW	88
Fuel	diesel
Year installed	1990
Maximum speed (kn)	9
Cruising speed (kn)	7
Engine cooling system	freshwater heat exchanger
Drive	
Shaft seal	yes



# VAN DE STADT 50 PACIFIC II

Engine controls	bowden cable
Gearbox	mechanical
Bowthruster	electric
Propeller type	folding
Propeller blades	3
Propeller shaft material	stainless steel
Shaft lubrication	water
Electric bilge pump	1 x
Electrical installation	12 V DC and 230 V AC 50 Hz
Generator	dry exhaust
Batteries	yes
Start battery	yes
Service battery	yes
Generator battery	yes
Battery monitor	yes
Battery charger	yes
Solar panel	yes

## NAVIGATION

Compass	Pedestal
Depth sounder	yes
Log	yes
Windset	yes
VHF	yes
Autopilot	yes
Radar	yes
GPS	yes
Navigation lights	yes

## EQUIPMENT

Fixed hardtop	yes
---------------	-----



# VAN DE STADT 50 PACIFIC II

Cockpit cushions	yes
Cockpit table	yes
Bathing platform	yes
Boarding ladder	stainless steel
Transom door	yes
Deck shower	yes
Anchor	Bruce
Anchor chain	yes
Windlass	electrical
Sea railing	stainless steel
Grab rail (superstructure)	wood
Life raft	container
Life raft (pers)	6
Last life raft survey	2020
Lifejackets	yes
Horn	electric
Radar reflector	yes
Fenders	yes
Mooring lines	yes
Radio-cd player	yes
Speakers in salon	yes
Fire extinguisher	yes
Extra info	VAT has been paid in Israel

## RIGGING

Rigging	ketch
Standing rigging	wire
Material mast	aluminium
Spreaders	2 sets main & single set mizzen
Mainsail	yes
Mainsail cover	yes



Mizzen	yes
Genoa I	yes
Genoa furler	Manual
Boomvang	tackle 2 x
Primary sheet winch	Self tailing
Secondary sheet winch	Self tailing
Halyard winches	4 x
Isolated backstay	yes



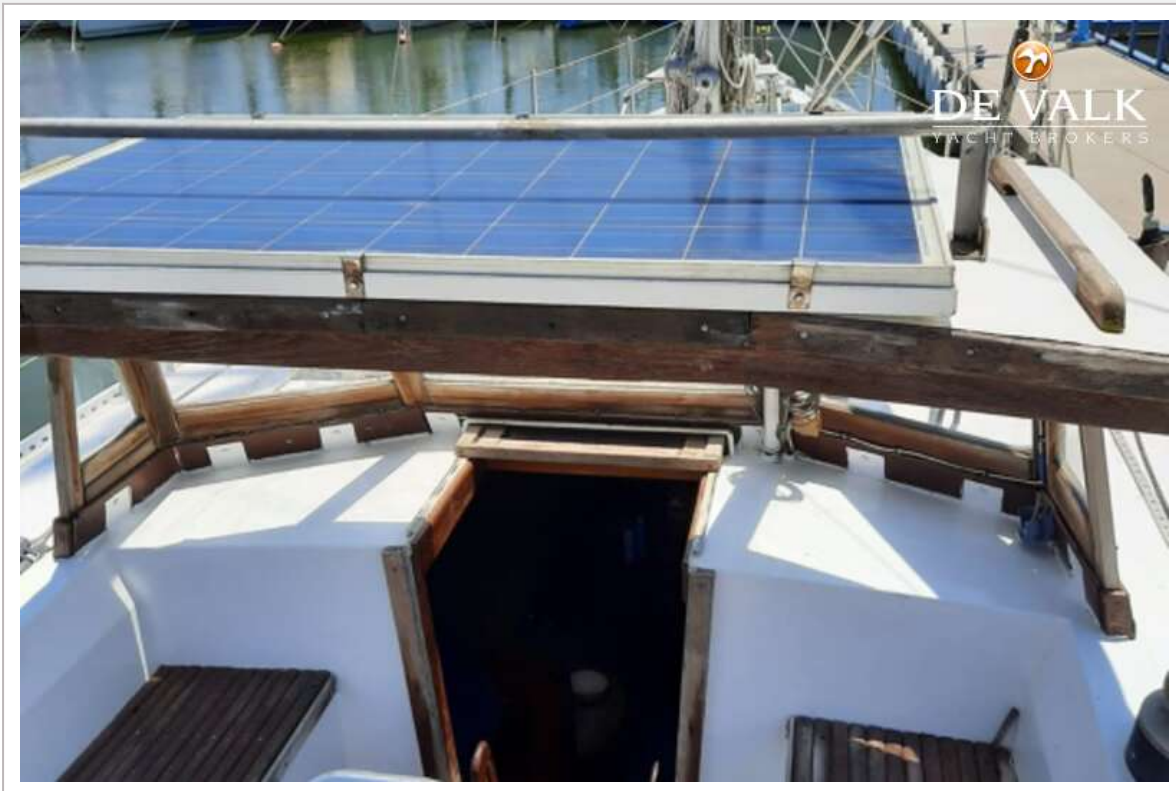
# VAN DE STADT 50 PACIFIC II



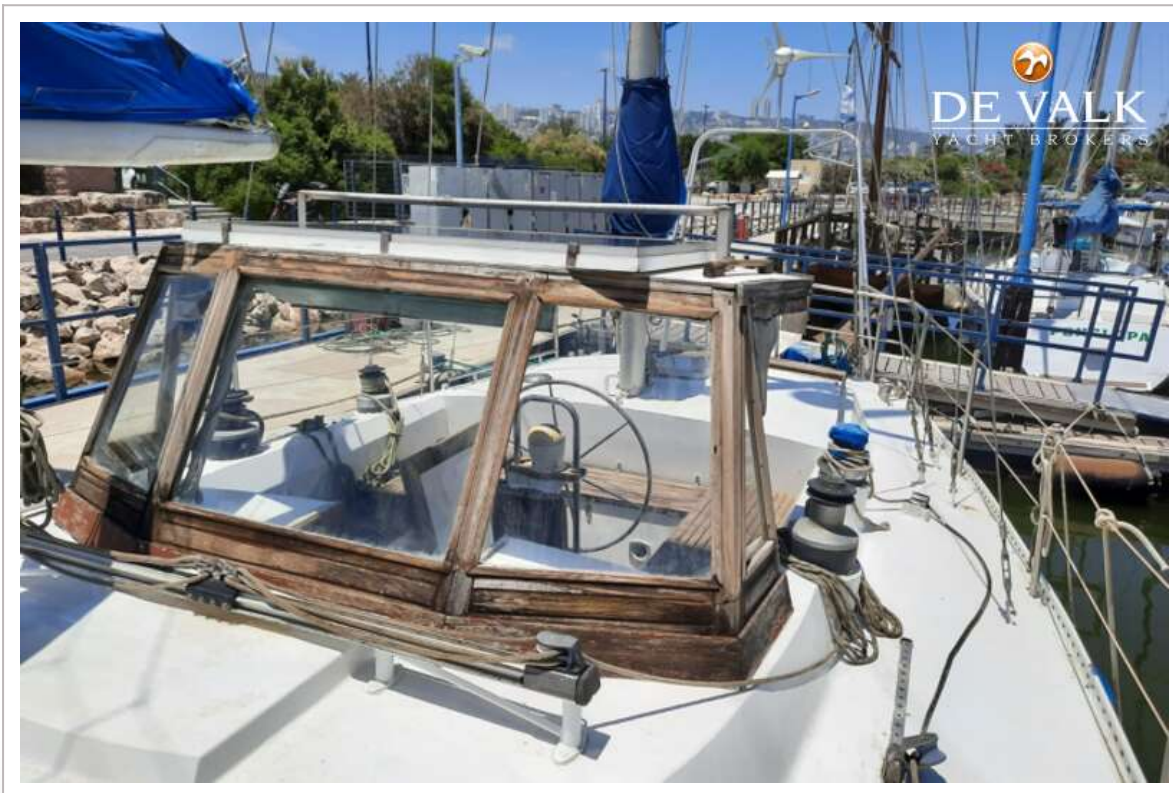
# VAN DE STADT 50 PACIFIC II



# VAN DE STADT 50 PACIFIC II



# VAN DE STADT 50 PACIFIC II



# VAN DE STADT 50 PACIFIC II



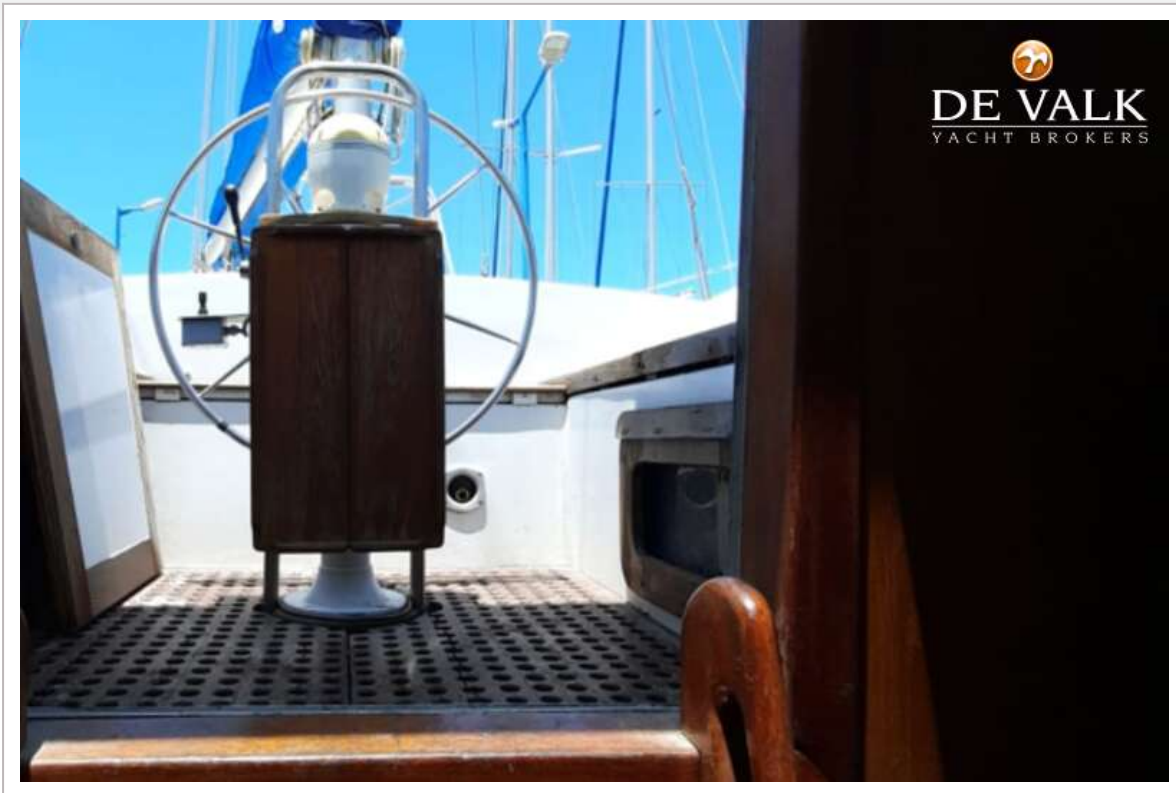
# VAN DE STADT 50 PACIFIC II



# VAN DE STADT 50 PACIFIC II



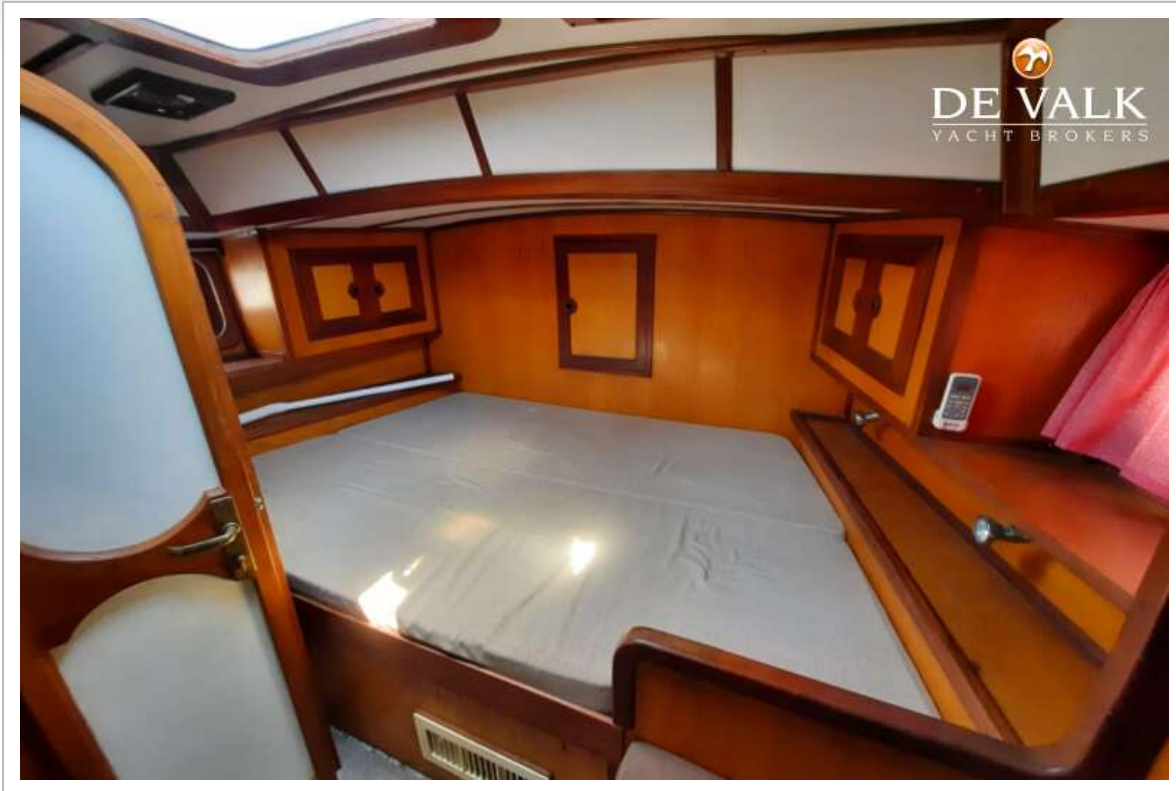
# VAN DE STADT 50 PACIFIC II



# VAN DE STADT 50 PACIFIC II



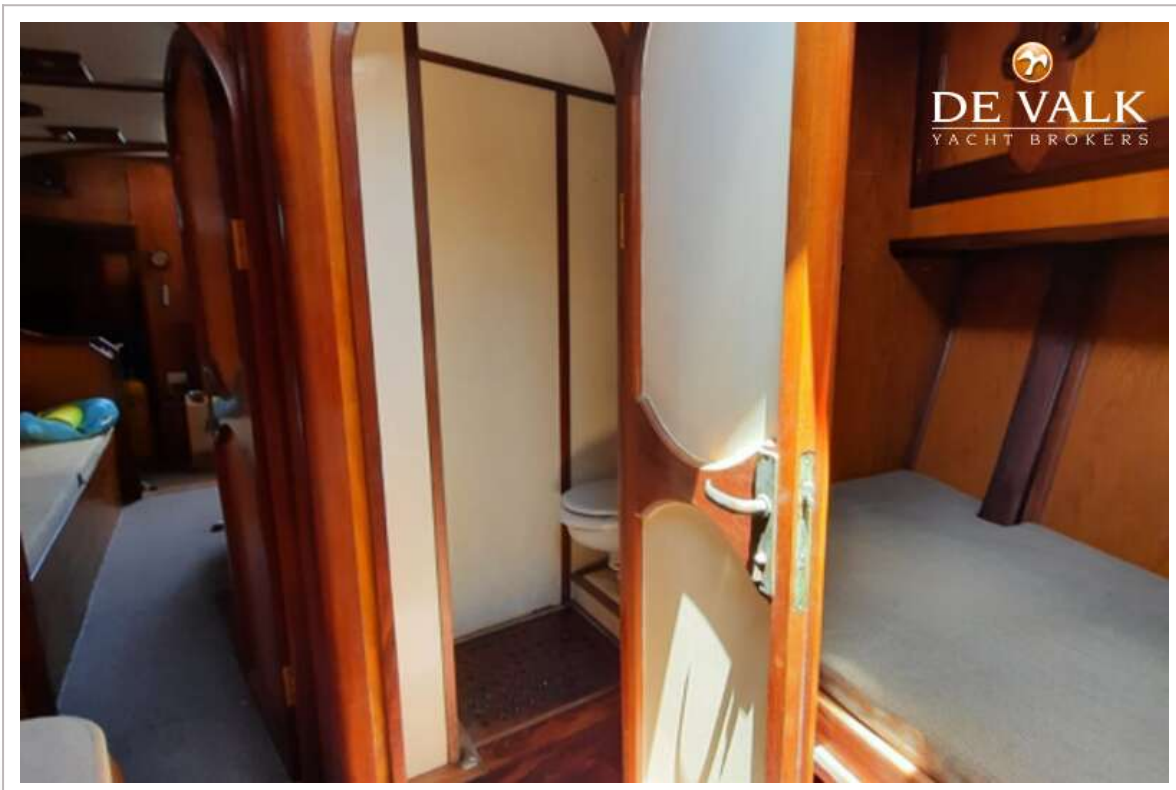
# VAN DE STADT 50 PACIFIC II



# VAN DE STADT 50 PACIFIC II



# VAN DE STADT 50 PACIFIC II





  
DE VALK  
YACHT BROKERS

