



DE VALK
YACHT BROKERS



FINYA 75



DE VALK
YACHT BROKERS

BROKERAGE | CHARTER | BERTHS | FINANCE | INSURANCE | YACHT MANAGEMENT

FINYA 75

BROKER'S COMMENTS

Finya 75, a go anywhere capable performance yacht. Beautiful lines, in more than fair condition with a roomy light interior. For comfortable shorthanded cruising or with a small crew. Present owner replaced many systems. Although not being used in 2 years, we just sailed her from Tunis to Valencia without any problems. Previous asking price EUR. 499.000 She will be auctioned on Febr. 21 in cooperation with Schipveiling-BVA Auctions. Further info and viewing days: https://bit.ly/Auction_Finya75. Opening price € 130,000, offers can be done online as per Febr. 14.

Hans Visser

SPECIFICATIONS

| | | | |
|---------------------|------------------------------|----------------|--------------------------|
| Dimensions | 22.86 x 5.60 x 2.55 (m) | Builder | Finya Yachts |
| Built | 1991 | Cabins | 3 |
| Material | GRP | Berths | 6 |
| Engine(s) | 1 x caterpillar 3208N diesel | Hp/Kw | 210.00 (hp), 154.35 (kw) |
| Asking price | sold (VAT) | Lying | contact Amsterdam |

CONTACT

| | | | |
|---------------------|--|------------------|---------------------|
| Sales office | De Valk Amsterdam B.V. | Telephone | +31 (0)35 5829014 |
| Address | Peperstraat 7 1411 PX Naarden NL | E-mail | amsterdam@devalk.nl |

DISCLAIMER

These particulars are given in good faith as supplied but cannot be guaranteed.



GENERAL

| | |
|----------------------------|---|
| Model | FINYA 75 |
| Type | sailing yacht |
| LOA (m) | 22,86 |
| LWL (m) | 22,17 |
| Beam (m) | 5,60 |
| Draft (m) | 2,55 |
| Headroom (m) | 2,20 |
| Year built | 1991 |
| Launched | 2014 after major refit |
| Builder | Finya Yachts |
| Country | Taiwan |
| Designer | Rob ladd |
| Displacement (t) | 41 |
| CE norm | NA |
| Hull material | GRP |
| Hull colour | blue Small local retouch needed, but looks further really good. |
| Hull shape | round-bilged |
| Keel type | fin keel |
| Superstructure material | GRP |
| Rubbing strake | stainless steel |
| Deck material | GRP |
| Deck finish | non-skid paint |
| Superstructure deck finish | non-skid paint |
| Cockpit deck finish | teak |
| Antifouling (year) | 2018 |
| Dorades | 2 x stainless steel with guards |
| Window frame | aluminium |
| Window material | tempered glass |
| Deckhatch | 2 x Lewmar oversized & 11 Ocean series 60 (all 2015) |
| Portholes | And 5 deck prisms (rebedded 2015) |



| | |
|-------------------------------------|---|
| Radar arch | non collapsible Aluminium |
| Fuel tank (litre) | stainless steel 2498 |
| Level indicator (fuel tank) | yes |
| Freshwater tank (litre) | stainless steel 1325 |
| Level indicator (freshwater) | yes |
| Blackwater tank (litre) | stainless steel 227 |
| Level indicator (blackwater) | yes |
| Blackwater tank extraction | deck extraction + pump |
| Greywater tank (litre) | See Black water |
| Wheel steering | hydraulic Wagner |
| Inside helm position | yes |
| Outside helm position | cable steering Edson (Cables 2014) |
| Emergency tiller | yes |
| Extra info | Advise to clean fuel tanks |
| Extra info | Stand up engine room |
| Extra info | Portholes needs check, some are dripping at heavey sea. |

ACCOMMODATION

| | |
|--------------------------------|---|
| Cabins | 3 |
| Berths | 6 |
| Crew cabin | 1 |
| Crew berths | 2 |
| Interior | teak |
| Layout | Private with crew |
| Floor | teak Varnished |
| Open cockpit | yes |
| Pilot house/deck saloon | With full helm station and 360 view |
| Saloon | yes |
| Headroom saloon (m) | 2,20 |
| Heating | diesel ducted hot air Espar D5 Airtonic 18.500 BTU (2015) |
| Air-conditioning | reverse cycle airco 2 x 36.000 Marine air |



| | |
|-------------------------|--|
| Navigation center | yes |
| Aft Cabin | yes |
| Dining room | yes |
| Dinette | yes |
| Sliding door to cockpit | Heavy Duty polished Stainless steel |
| Galley | Alongside |
| Countertop | corian White |
| Sink | Tripple basin |
| Cooker | calor gas Force 10 3 burner (2008) |
| Oven | Force 10 (2008) |
| Extractor | yes |
| Gas alarm | yes |
| Microwave | yes |
| Fridge | Grunert AC and Engine driven 5 compartment |
| Freezer | See fridge |
| Hot water system | 220V + engine Raritan 60 Liter boiler |
| Water pressure system | electrical Balmar 2 state double pump system |
| Manual and/or foot pump | For fresh and salt water |
| Dishwasher | Splendide 2000 |
| Ice maker | Uline 2014 |
| Crockery | yes |
| Waste compactor | Boran |
| Owners cabin | French bed Full beam in the aft |
| Bed length (m) | 2,10 |
| Wardrobe | hanging/drawers/shelves |
| Bathroom | en suite |
| Toilet | en suite |
| Toilet system | electric |
| Wash basin | in the bathroom |
| Shower | en suite |
| Bath tub | en suite Full size |
| Guest cabin 1 | double bed |



| | |
|-----------------|-----------------------------------|
| Bed length (m) | 2 |
| Wardrobe | hanging/drawers/shelves |
| Bathroom | en suite |
| Toilet | en suite |
| Toilet system | electric |
| Wash basin | in the bathroom |
| Shower | shared |
| Extra info | Guest cabins have a shared shower |
| Guest cabin 2 | double bed |
| Bed length (m) | 2 |
| Wardrobe | hanging/drawers/shelves |
| Bathroom | en suite |
| Toilet | en suite |
| Toilet system | electric |
| Wash basin | in the bathroom |
| Shower | shared |
| Crew cabin(s) | 1 (Used as storage now) |
| Bathroom (crew) | yes |
| Toilet (crew) | yes |
| Toilet system | manual |
| Wash basin | in the bathroom |
| Shower (crew) | yes |
| Washing machine | Splendide 2000 |
| Extra info | One fridge not operational |

MACHINERY

| | |
|---------------|-------------|
| No of engines | 1 |
| Make | Caterpillar |
| Type | 3208N |
| HP | 210 |
| kW | 154,35 |



| | |
|---------------------------------|---|
| Fuel | diesel |
| Year installed | 2007 |
| Year of overhaul | 2014 |
| Maximum speed (kn) | 10 |
| Cruising speed (kn) | 8 |
| Range (nm) | 2300 |
| Engine hours | 2500 |
| Engine cooling system | freshwater heat exchanger |
| Drive | shaft |
| Engine controls | electrical & bowden cable Hynautic |
| Bowthruster | electric Vetus 285 with seperate battery |
| Exhaust | watercooled |
| Thrust bearing | Aquadrive/ outhailer bearing need replacement |
| Propeller type | fixed 24" |
| Propeller blades | 3 |
| Propeller shaft material | stainless steel 2" |
| Shaft lubrication | water Seal needs check/ replacement |
| Manual bilge pump | yes |
| Electric bilge pump | Rule 3500 with alarm |
| Bilge alarm | Jabsco high capacity engine driven emergency pump |
| Electrical installation | 12 & 24 V DC and 110 60 Hz and 240 V 50 Hz |
| Generator | wet exhaust Fischer Panda 14 Kva with soundbox |
| Running hours generator | Rebuilt 2014, fuel tank need cleaning |
| Batteries | Independent sets with cross over |
| Start battery | With paralel switch |
| Service battery | 8 AGM 6 volt for 24 V (2014) |
| Generator battery | With paralel switch |
| Bowthruster battery | 48 Volt |
| Battery monitor | yes |
| Battery charger | Victron 24 V |
| Inverter | Outback 2500 Watt |
| Diode battery combiners | yes |



| | |
|------------|--|
| Shorepower | with cable 50 Amp with port and starboard connection |
| Watermaker | HRO 900 g/d |
| Extra info | Dual racor filters |
| Extra info | Reverso oil change system for main engine, generator, and trans. |
| Extra info | 24 V 135 Amp Alternator and 50 Amp emergency alternator |

NAVIGATION

| | |
|---------------------|--|
| Compass | Danfort |
| Electric compass | B & G |
| Depth sounder | B & G Hydra 5000 dual station 2018 |
| Log | B & G Hydra 5000 dual station 2018 |
| Windset | B & G Hydra 5000 dual station 2018 |
| Repeater | B & G 2018 |
| VHF | Icom M402 and Icom ICM 423G 25W GPS integrated 2018 |
| Autopilot | Simrad AP 25 (new pump 2018) & Navpilot Furuno both dual station |
| GPS | 2 x Furuno DGPS?WAAS |
| Radar/GPS | Furuno navnet dual station one Touch TZTL12F 2018 |
| Navtex | Furuno Dfax-207 |
| Electronic chart(s) | 2018 Med |
| Transmitter | Icom M802 SSB |
| Navigation lights | LED 2014 |
| Searchlight | On radar arch |
| Extra info | Telephone/Intercom stations |
| Extra info | Hydraulic Pilot need refile and check on leakage |

EQUIPMENT

| | |
|------------------|-----|
| Bimini | yes |
| Sun awning | yes |
| Cockpit cushions | yes |



| | |
|----------------------------|--|
| Cockpit table | yes |
| Bathing platform | Teak |
| Boarding ladder | stainless steel New 2020 (folding) |
| Deck shower | yes |
| Anchor | Bruce 110 Lbs |
| Anchor chain | 100 m 3/4" BBB chain |
| Anchor 2 | CQR Plough 110 Lbs |
| Anchor chain | 3/4" BBB chain with rope |
| Windlass | electrical Maxwell 4000 (new motr 2015) and full service 2018 |
| Deck wash | Seawater & fresh water |
| Dinghy | rigid hull Novurania 4,1 M plus small spare inflatable for emergencies |
| Outboard | 25 Hp Yamaha 2017 plus small one for emergency dinghy |
| Davits | TNT tender lift, needs check |
| Sea railing | New wires 2015 & built on BBQ |
| Grab rail (superstructure) | |
| Railing side opening gates | yes |
| Pushpit | With integrated seats |
| Pulpit | yes |
| Life raft | container 1 x switilk & 1 x Avon needs check |
| Life raft (pers) | 1 x 6 & 1 x 8 |
| Last life raft survey | 6 persens serviced 2020 |
| Lifejackets | Several |
| Safety harness | yes |
| Lifebuoy | yes |
| Danbuoy | yes |
| TV | 22" & 13" both with integrated DVD player |
| TV receiver | Glomex |
| Radio-cd player | Sony AM/FM/CD/MP3/Xm player |
| Clock - barometer | Wempe & Plath |
| Fire extinguisher | All checked 2020 |
| Auto extinguisher system | Halon |



Extra info

Did not sail for 2 years but felt very comfortable

Extra info

Need some weeks "love and care" and she will be a top vessel

RIGGING

Rigging

cutter

Standing rigging

wire Replaced 2014, needs adjusting a bit.

Brand mast

Rondal

Material mast

aluminium

Spreaders

3 sets of spreadres fully inspected 2014

Keel stepped mast

yes

Mainsail

Doyle Cresent cut dacron 2014

Stoway mast

Rondal electric Hydraulic incl boom outhaul all rebuilt 2014

Jib I

Doyle Cresent Cut dacron 135% 2014

Genoa furler

Rondal electric hydraulic rebuilt 2014

Staysail

Doyle cresent Cut 2014

Staysail furler

Rondal electric hydraulic rebuilt 2014

Backstay adjuster

hydraulic Rondal (rebuilt 2014)

Boomvang

hydraulic Rondal (rebuilt 2017)

Primary sheet winch

(2) Barient #28 hydraulic main sheet winches serviced 2018

Secondary sheet winch

2) Barient #35 hydraulic secondary cockpit winches service 2018

Genoa sheetwinches

(2) Barient hydraulic primary winches in cockpit serviced 2018

Halyard winches

2) Barient #28 manual winches on mast fully serviced 2018

Multifunctional winches

halyard/sheet winches 4) Barient #28 manual winches in cockpit and mast serviced 2018

Extra info

Running rigging replaced 2014

Extra info

Hdropack winches/furlers needs check, sweating on some points





BROKERAGE | CHARTER | BERTHS | FINANCE | INSURANCE | YACHT MANAGEMENT



DE VALK
YACHT BROKERS



This yacht will be auctioned,
for further details please visit www.devalk.nl

Dit schip zal worden geveild,
voor meer informatie gaat u naar www.devalk.nl

Dieses Schiff wird versteigert,
für weitere informationen besuchen Sie www.devalk.nl

Este barco será subastado,
para obtener más información, visite www.devalk.nl

WWW.DEVALK.NL



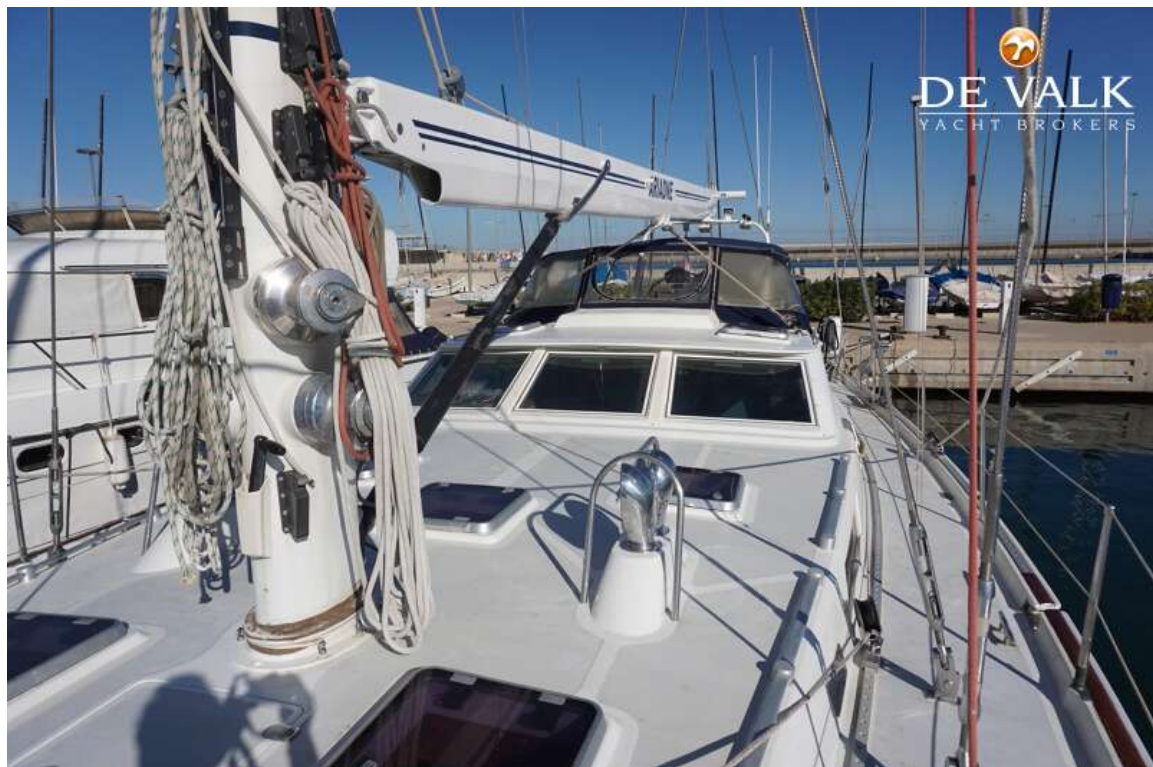
DE VALK
YACHT BROKERS



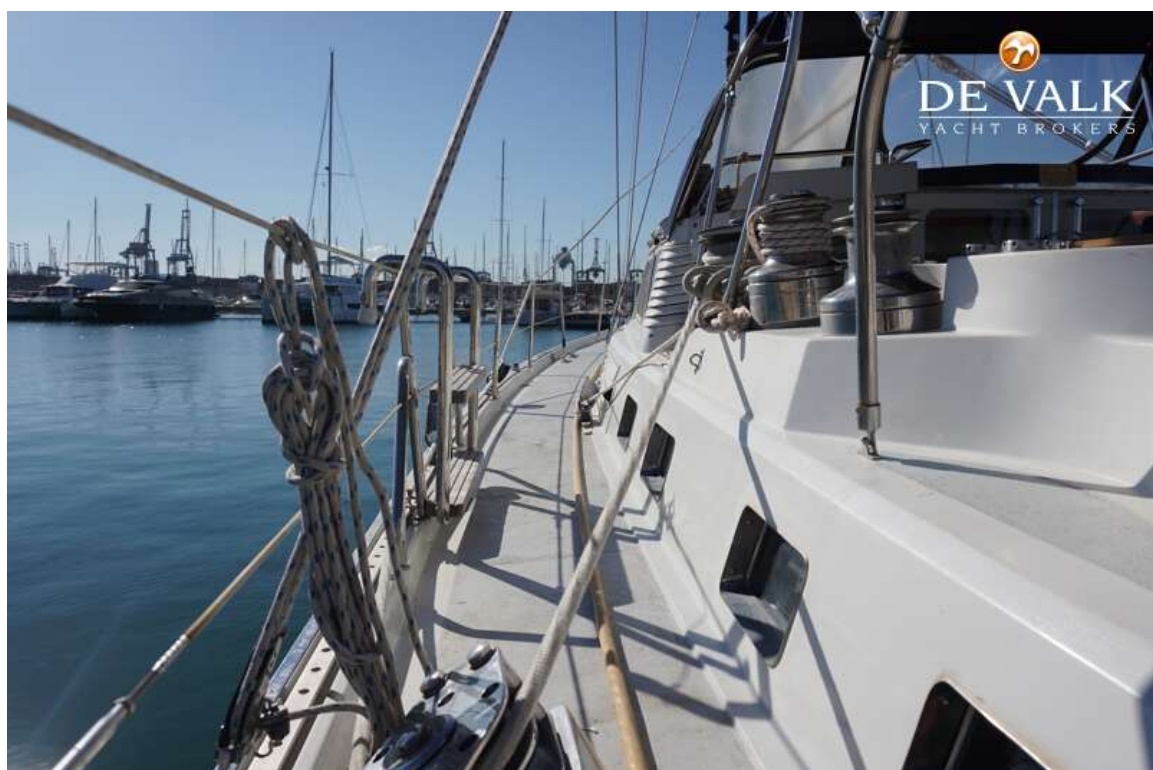


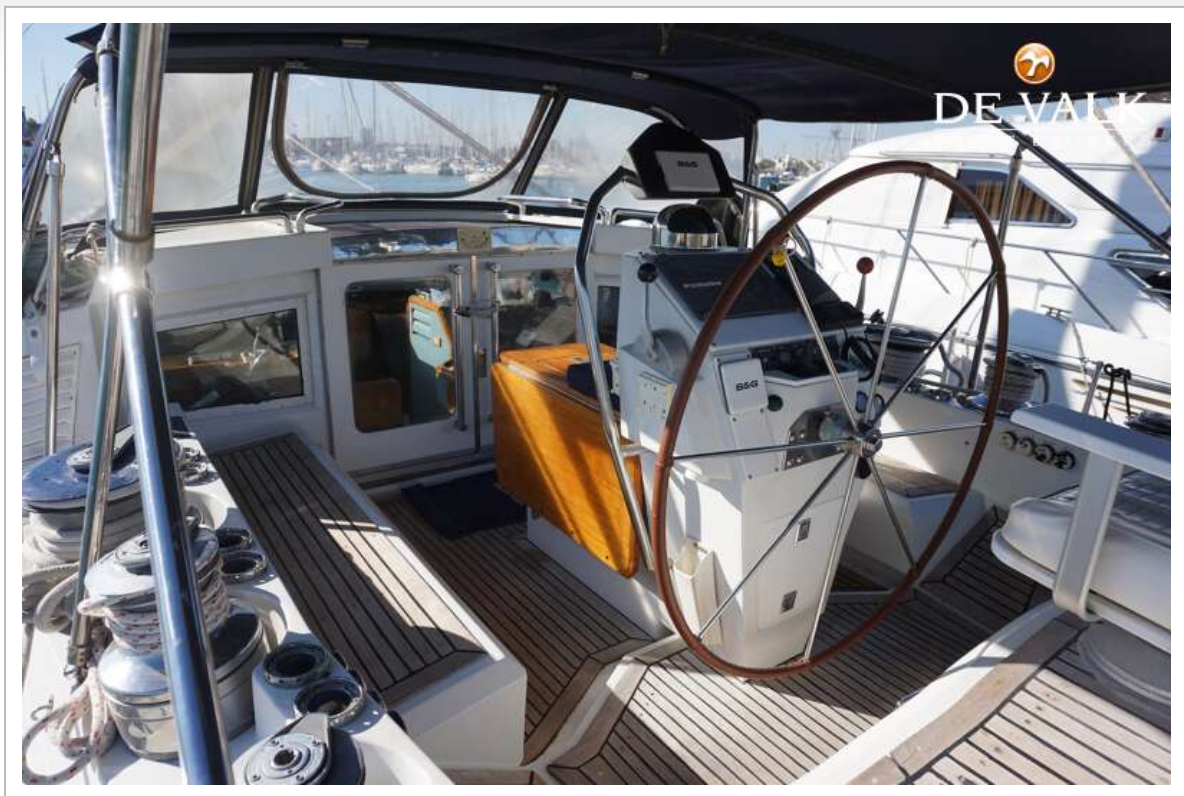








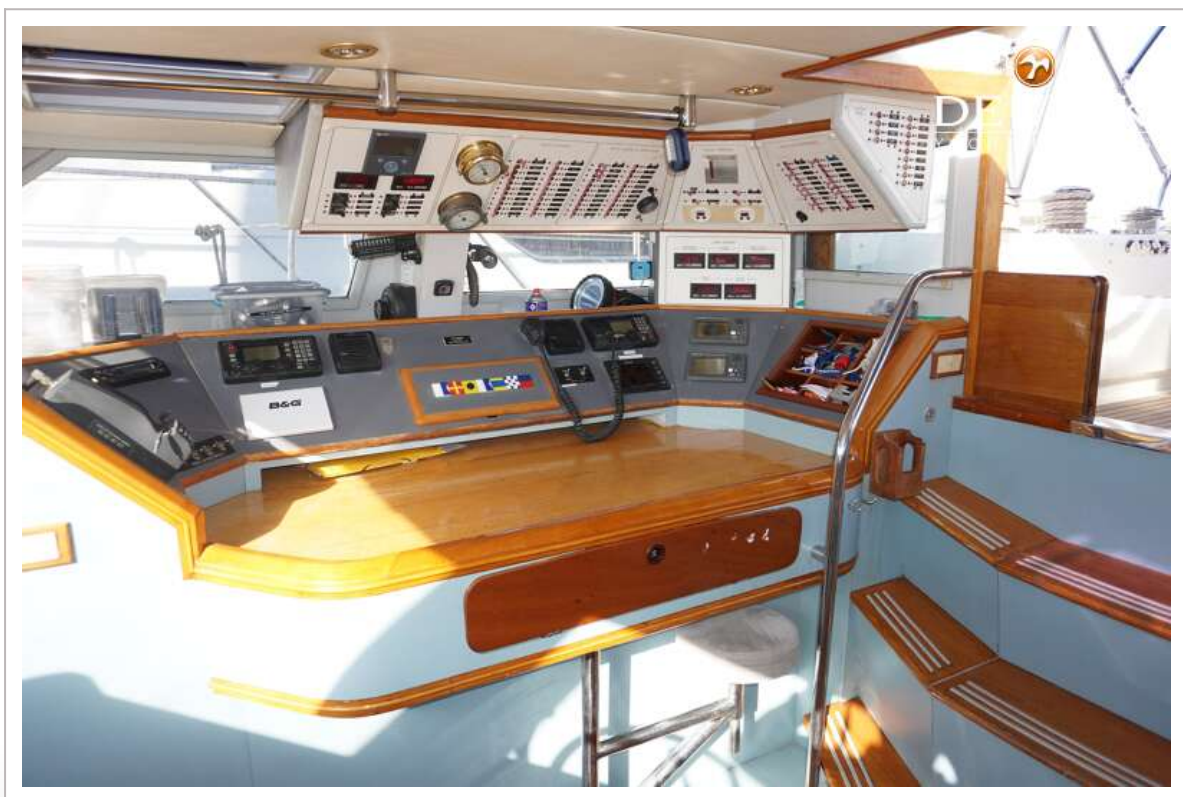




FINYA 75





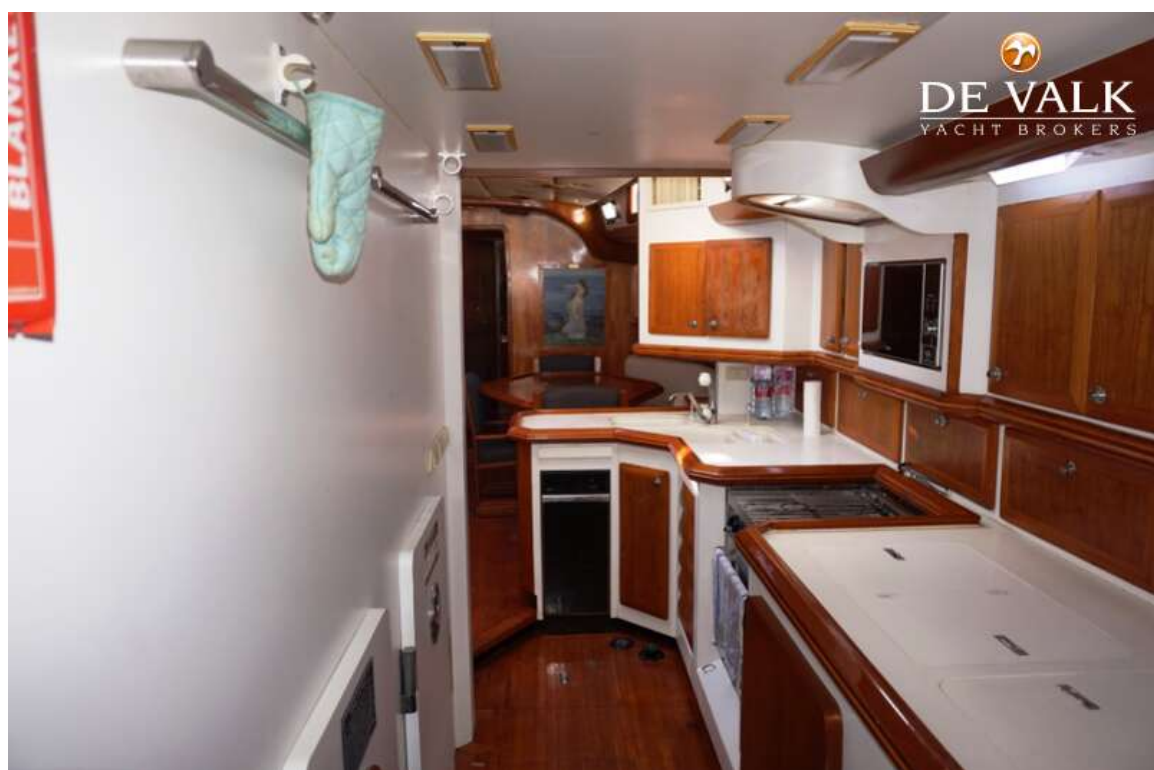




FINYA 75

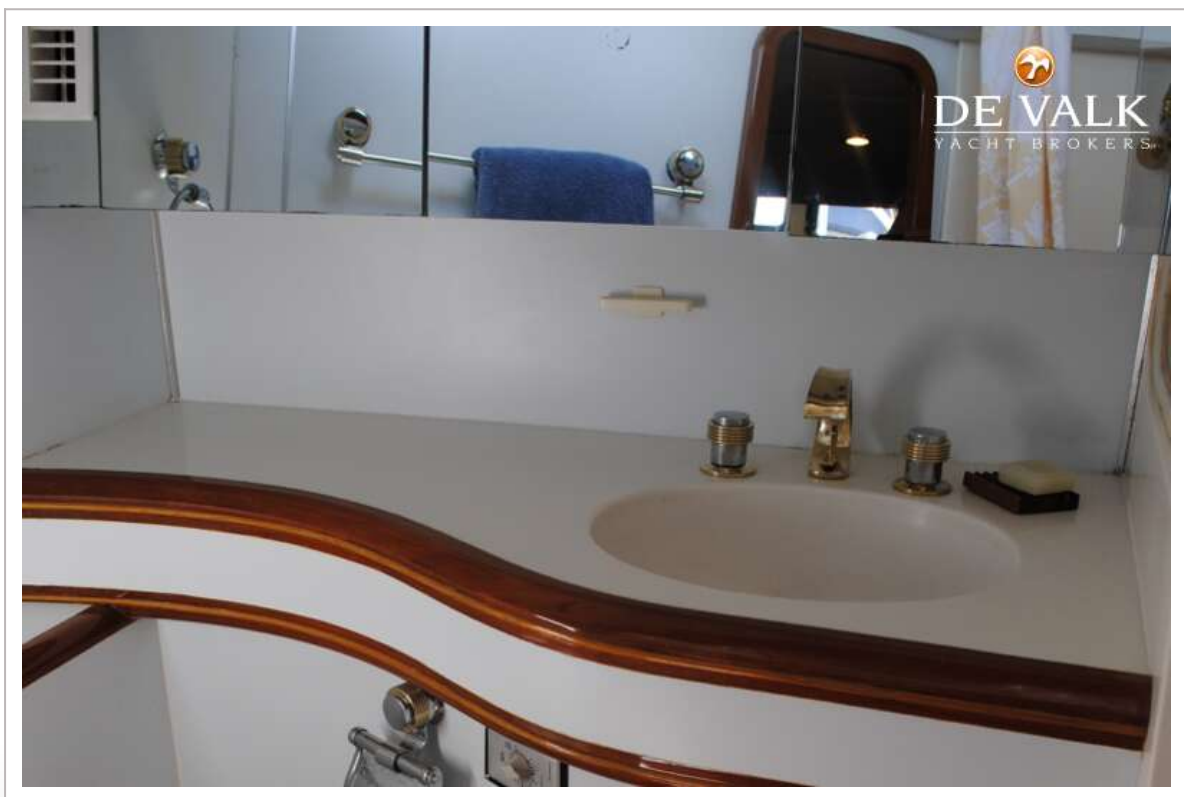
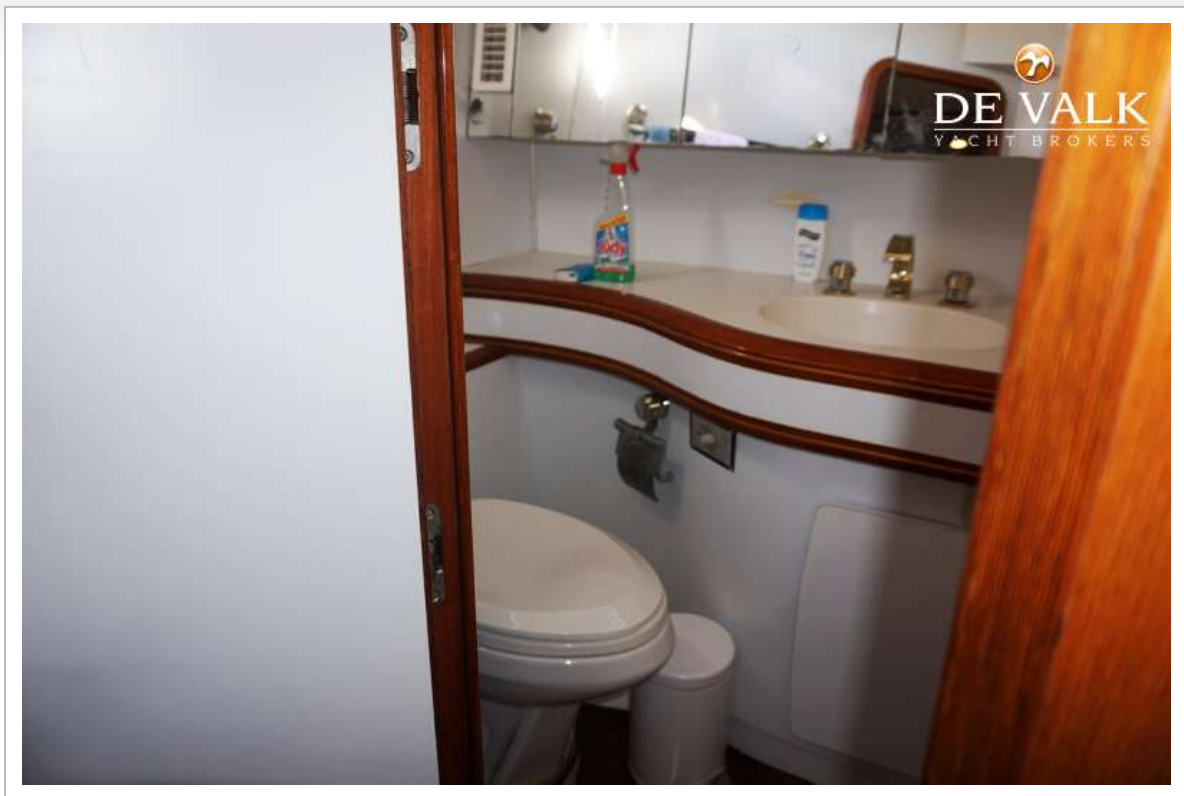


FINYA 75



FINYA 75





FINYA 75



