



DE VALK
YACHT BROKERS



AQUATELLA 49



DE VALK
YACHT BROKERS

AQUATELLA 49

BROKER'S COMMENTS

This very attractive, high-quality finished Aquatella 49 was designed by Brekebede and can now be viewed at our office in Hindeloopen. It was built in 2003 by the then Aquatel shipyard in Lemmer and finished by the Gebr. van Enkuizen and Sudsee in Makkum. This yacht is very well equipped and perfectly finished in detail. This Aquatella 49 is equipped with a spacious neat saloon, beautiful large guest cabins, good navigation system and an electric anchor system. She is extremely suitable for both short and long stays and is ready to sail immediately!

Henri van Eelen

SPECIFICATIONS

Dimensions	14.80 x 4.40 x 2.00 (m)	Builder	Aquatel, Gebr. van Enkuizen, Sudsee Makkum
Built	2003	Cabins	3
Material	Steel	Berths	6
Engine(s)	1 x Perkins Sabre M 115 T/ diesel	Hp/Kw	110.00 (hp), 81.00 (kw)
Asking price	sold (VAT)	Lying	contact Hindeloopen

CONTACT

Sales office	De Valk Hindeloopen	Telephone	+31 514 52 40 00
Address	Oosterstrand 1 8713 JS Hindeloopen The Netherlands	E-mail	hindeloopen@devalk.nl

DISCLAIMER

These particulars are given in good faith as supplied but cannot be guaranteed.



GENERAL

Model	AQUATELLA 49
Type	sailing yacht
LOA (m)	14,80
Beam (m)	4,40
Draft (m)	2,00
Air draft (m)	0,00
Year built	2003
Launched	2004
Builder	Aquatel, Gebr. van Enkuizen, Sudse Makkum
Country	The Netherlands
Designer	Bekebrede
Displacement (t)	20
CE norm	A
Hull material	steel
Hull colour	blue
Hull thickness (mm)	Zijden 5mm, vlak 6mm, kiel 6mm/ 15mm
Hull shape	round-bilged
Keel type	fin keel
Superstructure material	steel
Rubbing strake	stainless steel
Antifouling (year)	2019
Window frame	aluminium
Window material	tempered glass
Deckhatch	yes
Insulation	foam
Radar arch	collapsible
Fuel tank (litre)	steel 840L
Fuel tank 2 (litre)	stainless steel
Level indicator (fuel tank)	yes
Freshwater tank (litre)	stainless steel 840L



Level indicator (freshwater)	yes
Blackwater tank (litre)	stainless steel 250L
Blackwater tank extraction	deck extraction + uw line
Wheel steering	rack & pinion

ACCOMMODATION

Cabins	3
Berths	6
Interior	cherry
Floor	wood
Open cockpit	yes
Saloon	yes
Headroom saloon (m)	2m
Heating	central hot water Webasto
Navigation center	yes
Chart table	yes
Aft Cabin	yes
Galley	yes
Countertop	plastic
Sink	stainless steel
Cooker	induction MIELE
Extractor	yes
Microwave/oven combi	SIEMENS
Fridge	yes
Hot water system	220V
Water pressure system	electrical
Owners cabin	double bed
Bed length (m)	2m
Wardrobe	hanging/drawers/shelves
Bathroom	en suite
Toilet	en suite



Toilet system	electric TECMA
Wash basin	at the toilet
Shower	en suite
Guest cabin 1	bunk bed
Bed length (m)	2m
Wardrobe	hanging/drawers/shelves
Bathroom	shared
Toilet	shared
Toilet system	electric
Wash basin	at the toilet
Shower	shared
Guest cabin 2	v-bed
Bed length (m)	2m
Wardrobe	drawers
Bathroom	shared
Toilet	shared
Toilet system	electric
Wash basin	at the toilet
Shower	shared

MACHINERY

No of engines	1
Make	Perkins
Type	Sabre M 115 T/
HP	110
kW	81,00
Fuel	diesel
Year installed	2003
Consumption (l/hr)	4
Bowthruster	hydraulic
Propeller type	reversible



Propeller shaft material	Brons
Batteries	yes
Start battery	1
Service battery	4
Battery monitor	Philippi BCM 1
Battery charger/inverter	Victron Phoenix Multi 24V 2500 Watt 70 Ampere
Shorepower	with cable
Extra info	Saildrive Aquadrive Stuwdrukklager homokineet

NAVIGATION

Electric compass	yes
Depth sounder	Raymarine ST60
Log	Raymarine ST60
Windset	Raymarine ST60 + Wind CH
Repeater	Raymarine ST60
VHF	Raymarine Ray 240
Autopilot	Raymarine ST6001+ course computer
Rudder angle indicator	Raymarine ST6001+
Plotter/GPS	Raymarine RC 530
Radar/GPS	Raymarine RL70C + Radardome 45cm op paal achterdek (Cardanisch)
Radio receiver	yes
Navigation lights	yes

EQUIPMENT

Fixed windscreen	yes
Fixed hardtop	yes
Cockpit table	yes
Boarding ladder	stainless steel
Anchor	CQR Plough
Anchor chain	yes



Anchor 2	CQR Plough
Windlass	electrical
Deck wash	yes
Sea railing	wire
Wiper	yes
Radar reflector	yes
Mooring lines	yes
Radio-cd player	yes
Surround Sound System	yes
Clock - barometer	yes
Extinguisher in engine room	yes
Auto extinguisher system	yes

RIGGING

Rigging	sloop-cutter
Standing rigging	wire
Brand mast	Reckmann
Material mast	aluminium coated
Mainsail	North Sails
Mainsail cover	yes
Cutterstay	yes
Furling boom	yes
Jib	North Sails
Genoa	North Sails
Genoa furler	Reckmann
Cutter furler	Reckmann
Self tacking jib installation	yes
Reefing System	main in-boom furling
Backstay adjuster	hydraulic Navtec
Boomvang	gasspring
Primary sheet winch	yes



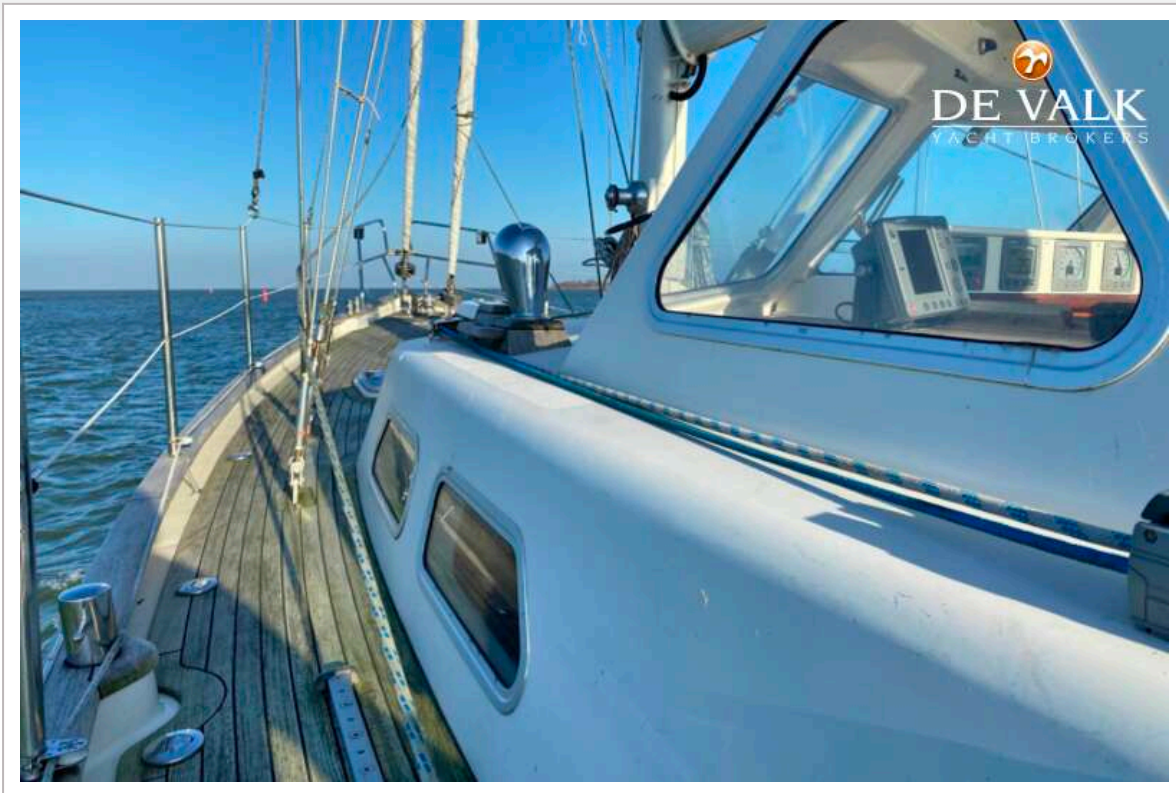
Genoa sheetwinches	yes
Halyard winches	yes
Multifunctional winches	



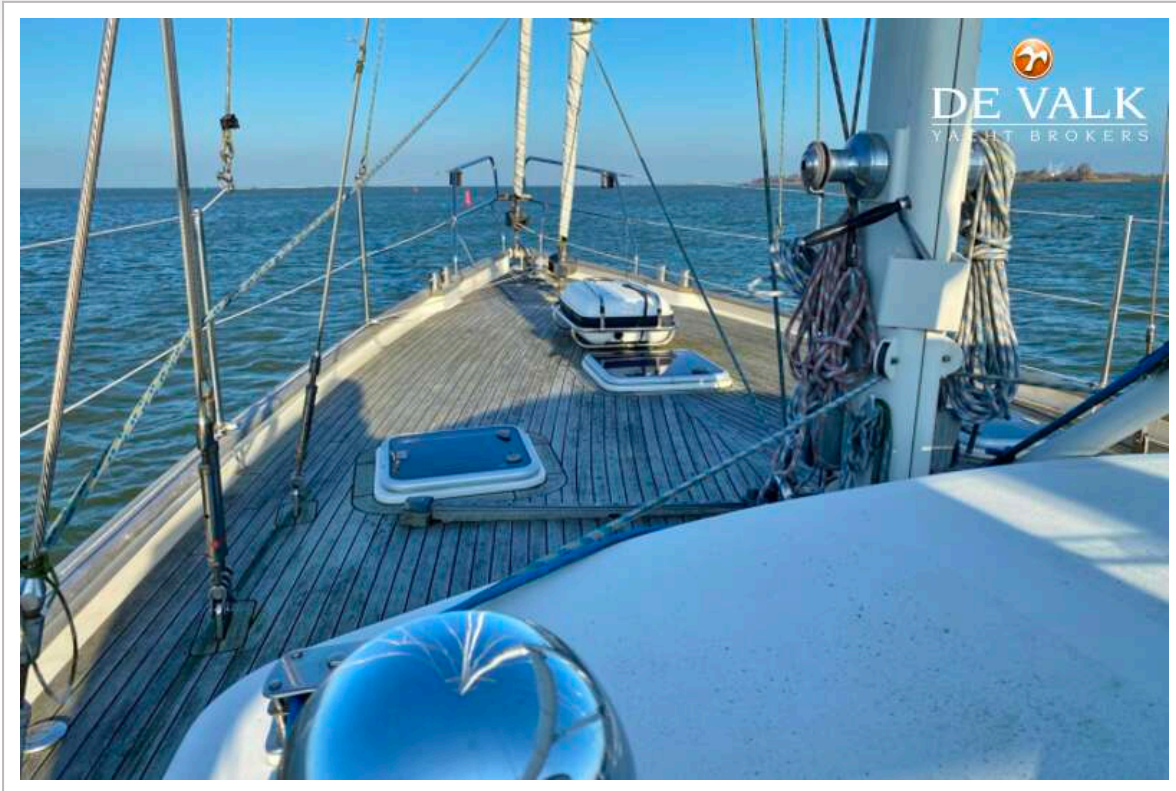
AQUATELLA 49



AQUATELLA 49



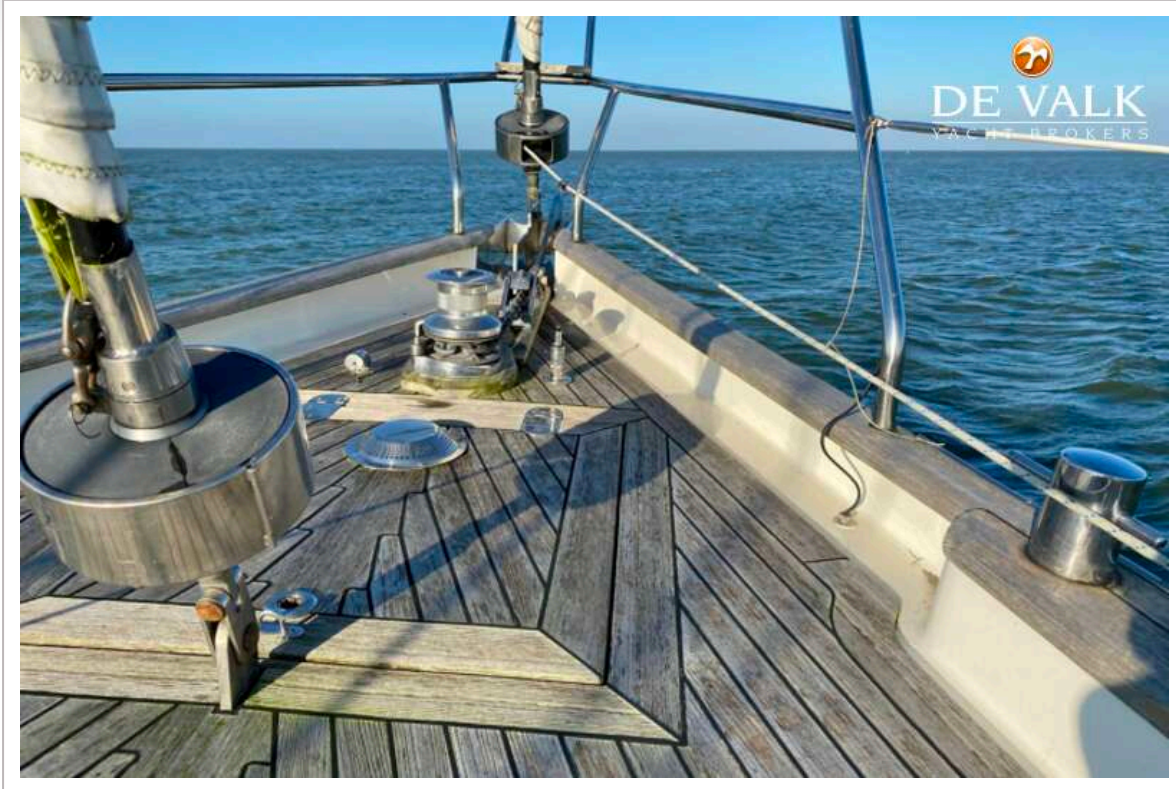
AQUATELLA 49



AQUATELLA 49



AQUATELLA 49



AQUATELLA 49



AQUATELLA 49



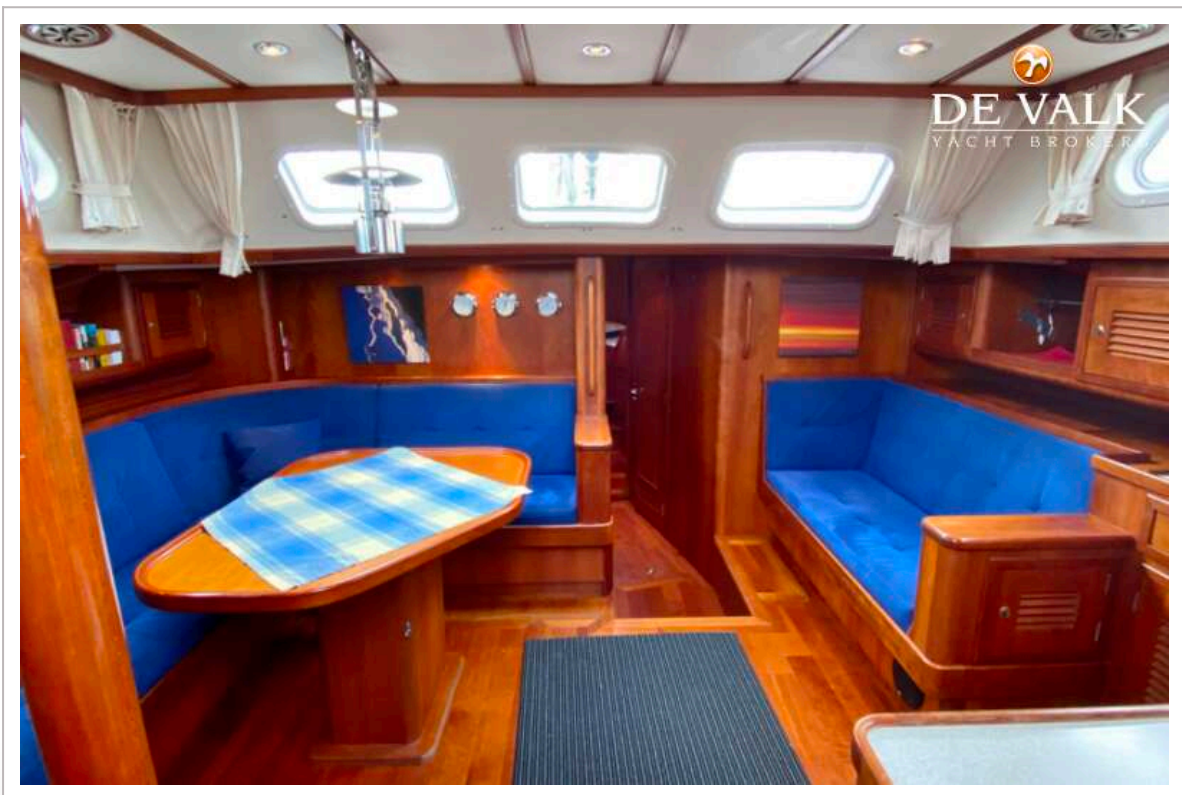
AQUATELLA 49



AQUATELLA 49



AQUATELLA 49



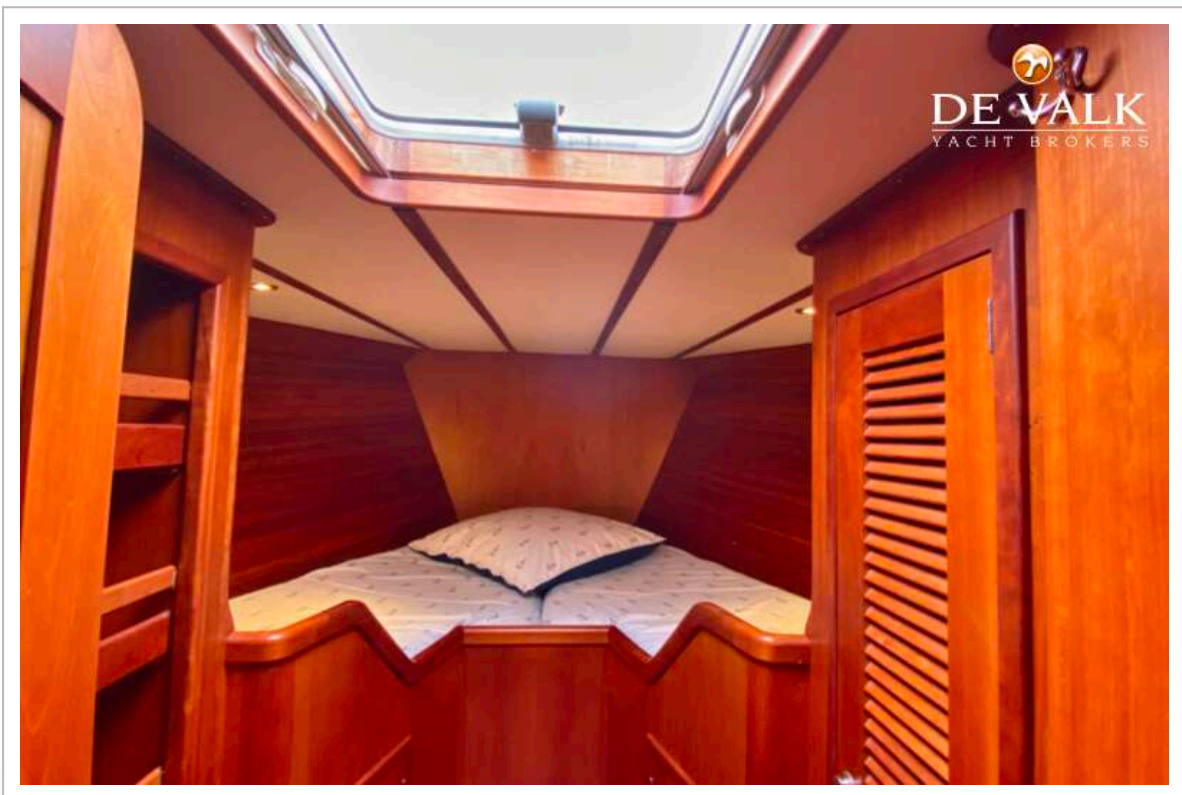
AQUATELLA 49



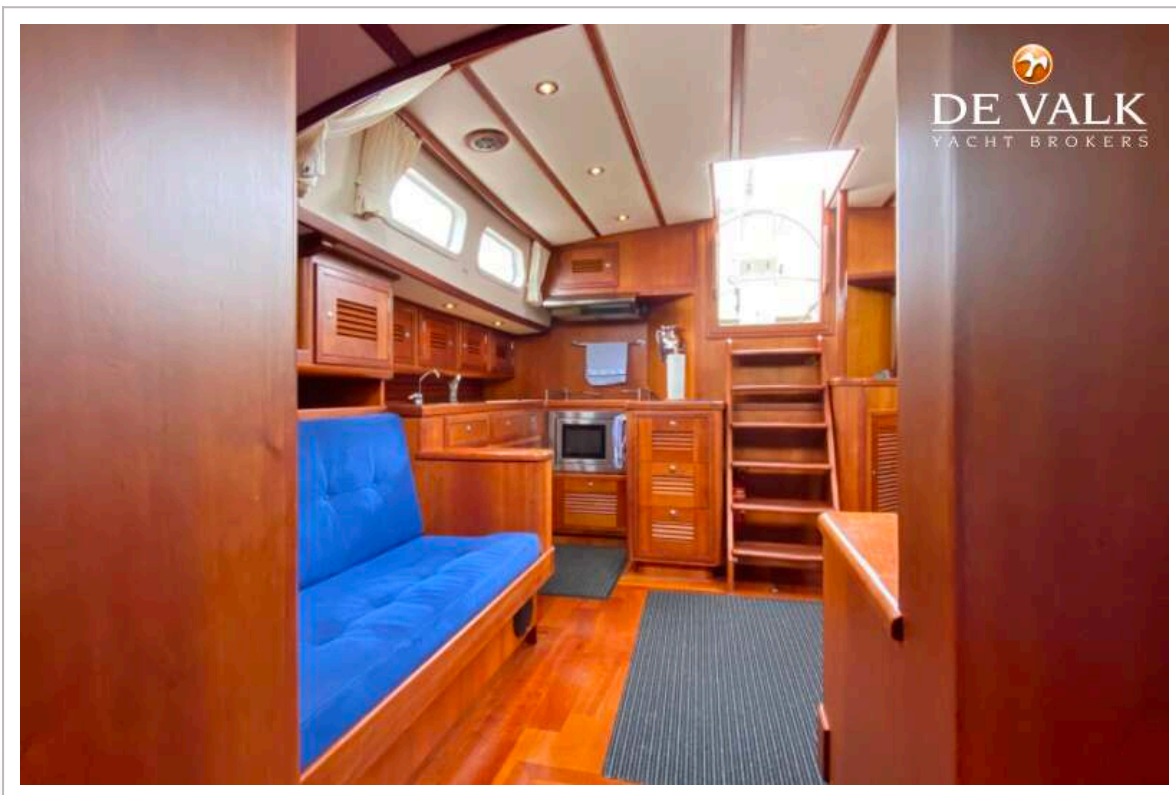
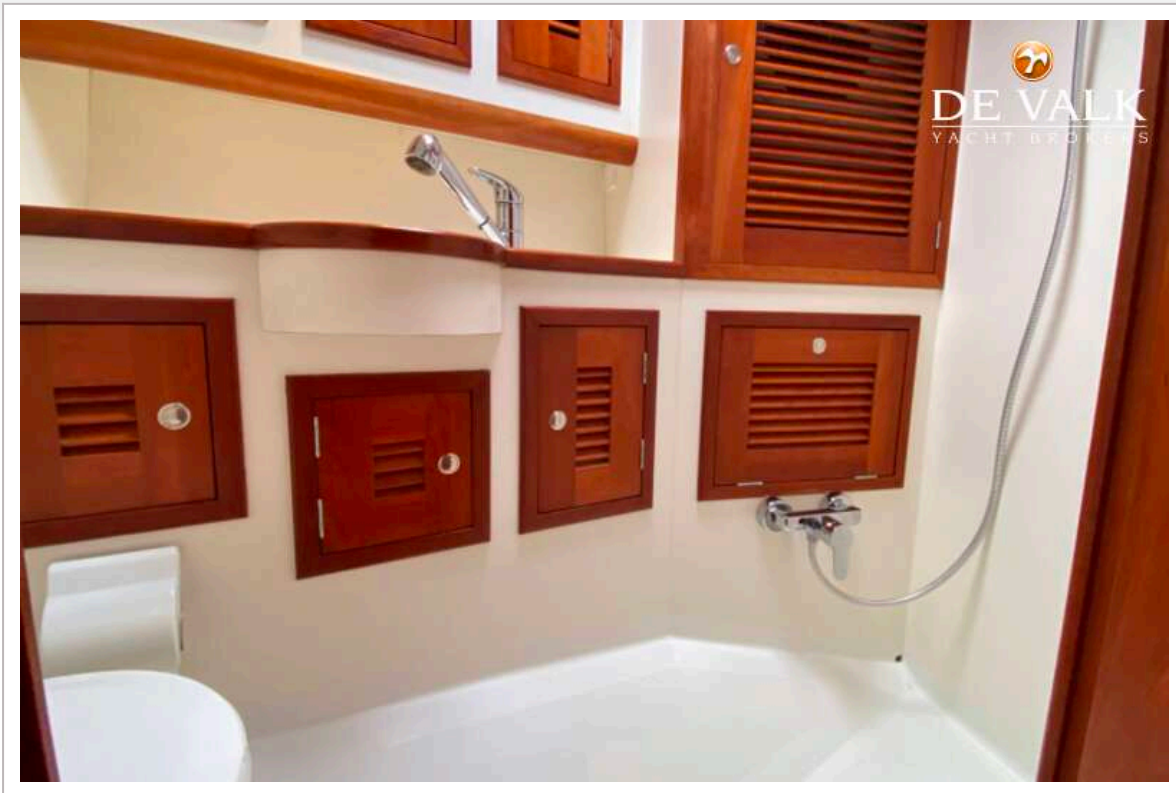
AQUATELLA 49



AQUATELLA 49



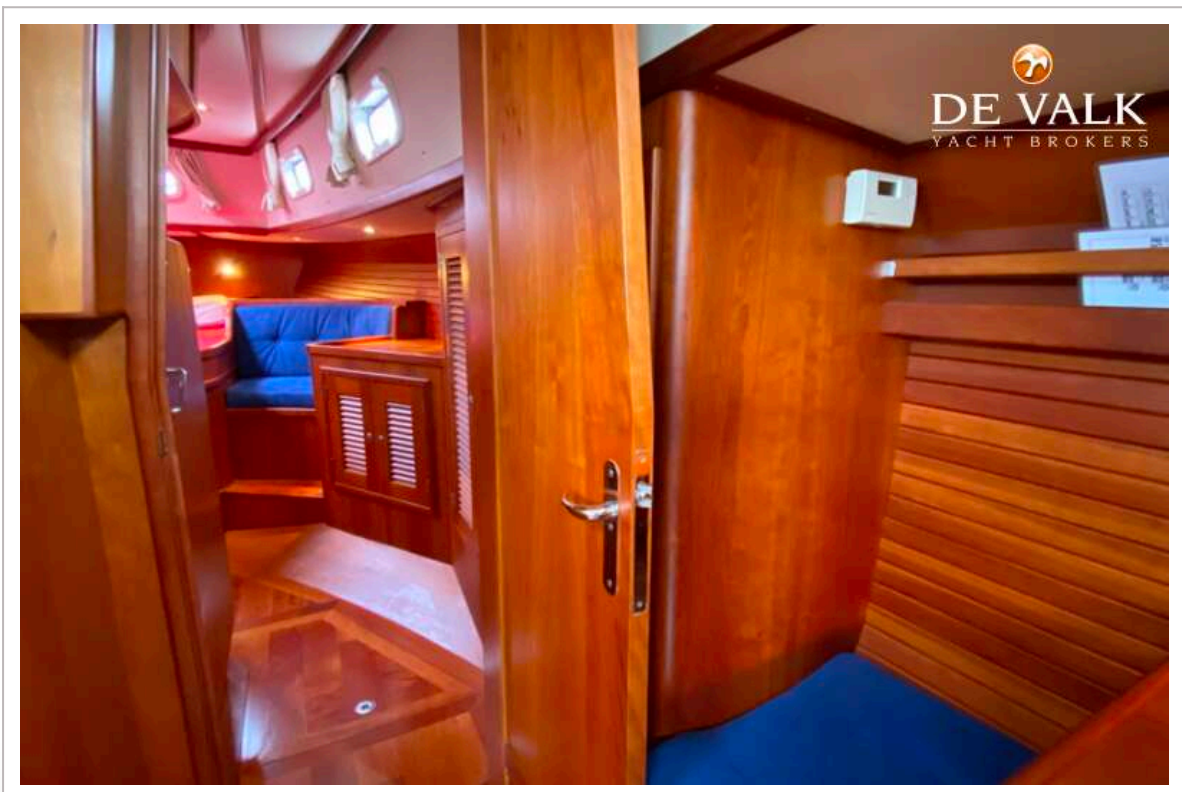
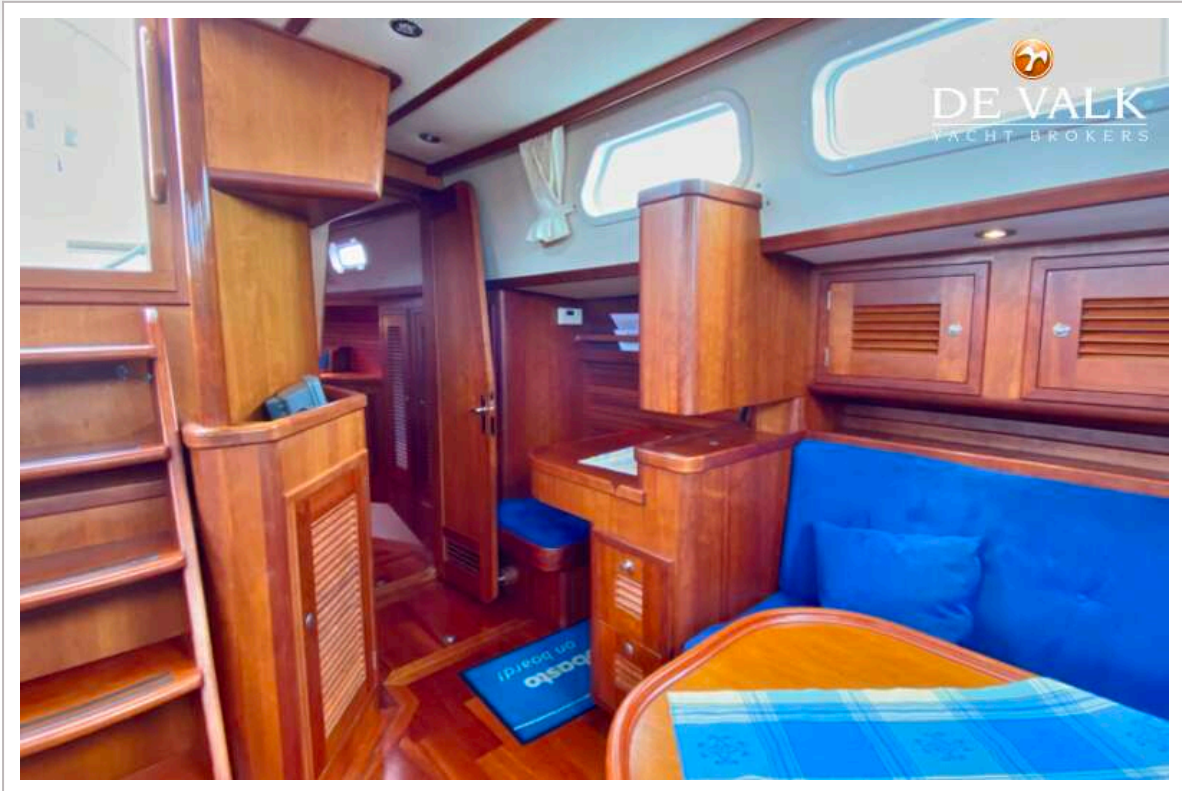
AQUATELLA 49



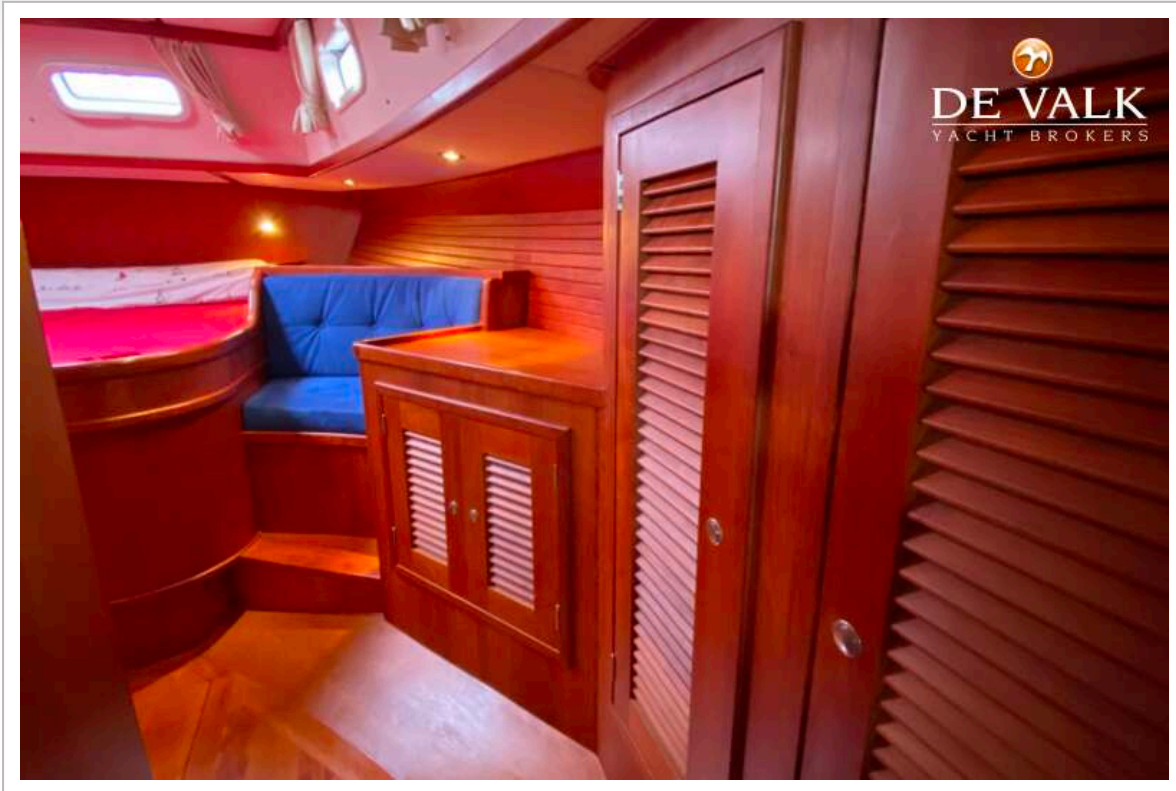
AQUATELLA 49



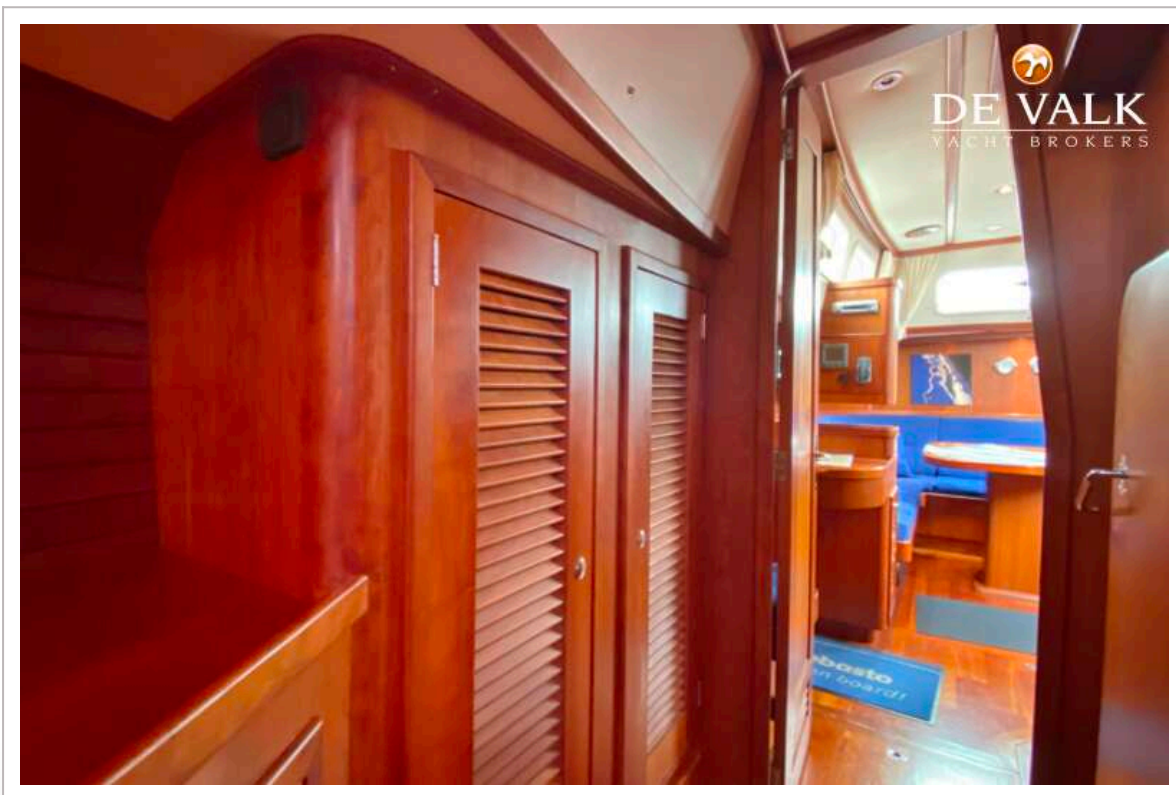
AQUATELLA 49



AQUATELLA 49



AQUATELLA 49



AQUATELLA 49

