



## STAVERSE KOTTER 1200



# STAVERSE KOTTER 1200

## BROKER'S COMMENTS

Classic motor sailer "Flugs" was build buy the renowned yard De Volharding Stavoren ( home of the Sturier ) . This very well maintained Staverse Kotter 1200 (ST 65) has Rigid and tough forms and is a familiar sight on the water. It is a comfortable yacht at sea and on inland waterways. You will also find comfort in the wheelhouse, as in the spacious saloon downstairs. This beautiful ship is in our sales-harbor at Hindeloopen where she can be admired and inspected 7 days a week. All reasonable offers will be considered.

*Johan Nooitgedagt*

## SPECIFICATIONS

<b>Dimensions</b>	12.00 x 4.00 x 1.00 (m)	<b>Builder</b>	Volharding Stavoren
<b>Built</b>	1988	<b>Cabins</b>	2
<b>Material</b>	Steel	<b>Berths</b>	8
<b>Engine(s)</b>	1 x Iveco 8061M12 diesel	<b>Hp/Kw</b>	125.00 (hp), 92.00 (kw)
<b>Asking price</b>	sold (VAT )	<b>Lying</b>	at sales office

## CONTACT

<b>Sales office</b>	De Valk Hindeloopen B.V.	<b>Telephone</b>	+31 514 52 40 00
<b>Address</b>	Oosterstrand 1 8713 JS Hindeloopen NL	<b>E-mail</b>	hindeloopen@devalk.nl

## DISCLAIMER

These particulars are given in good faith as supplied but cannot be guaranteed.



# STAVERSE KOTTER 1200

## GENERAL

Model	STAVERSE KOTTER 1200
Type	motorsailer
LOA (m)	12,00
LWL (m)	11,00
Beam (m)	4,00
Draft (m)	1,00
Air draft (m)	10,50
Air draft min (m)	2,80
Headroom (m)	2,00
Year built	1988
Builder	Volharding Stavoren
Country	The Netherlands
Designer	A.T. van der Werff
Displacement (t)	15
CE norm	NA
Hull material	steel
Hull colour	black + Blue
Hull thickness (mm)	6mm
Hull shape	multi hard chine
Keel type	box keel
Bilge keels	yes
Superstructure material	Steel and wood
Deck material	steel
Deck finish	non-skid paint
Superstructure deck finish	teak
Cockpit deck finish	teak
Antifouling (year)	Epoxyteer 2018
Window frame	aluminium
Window material	double glazing
Deckhatch	yes



# STAVELSE KOTTER 1200

Insulation	rockwool
Mast can be lowered	manual Winch / lier / winde 1000kg
Steadying sail with mast	yes
Fuel tank (litre)	steel 350 ltr.
Fuel tank 2 (litre)	steel 350 ltr.
Level indicator (fuel tank)	glass tube
Freshwater tank (litre)	stainless steel 400 ltr.
Level indicator (freshwater)	glass tube
Blackwater tank (litre)	stainless steel 250 ltr
Blackwater tank extraction	deck extraction + pump
Wheel steering	hydraulic
Inside helm position	yes
Outside helm position	
Emergency tiller	yes

## ACCOMMODATION

Cabins	2
Berths	8
Interior	teak
Floor	Multiplex teak and carpet
Pilot house/deck saloon	yes
Saloon	yes
Headroom saloon (m)	2 mtr.
Heating	diesel ducted hot air Webasto
Heating 2	central heating Heizkörper ALU Motor + 230V
Chart table	yes
Dinette to convert into berth	2 person
Sliding door to cockpit	yes
Galley	yes
Countertop	plastic
Sink	stainless steel Double



# STAVERSE KOTTER 1200

Cooker	calor gas
Oven	yes
Microwave	yes
Fridge	With freezer
Freezer	40Ltr Box Waeco
Hot water system	220V + engine Vetus 100 ltr. boiler for shower + gas geyser for gally
Water pressure system	electrical
Owners cabin	double bed
Bed length (m)	2.00 x 1.40 mtr.
Wardrobe	hanging and shelves
Bathroom	shared
Toilet	Jabsco
Toilet system	manual
Shower	
Guest cabin 1	single bed 3x
Bed length (m)	2 mtr.
Wardrobe	hanging and shelves

## MACHINERY

No of engines	1
Make	Iveco
Type	8061M12
HP	125
kW	92,00
Fuel	diesel
Year installed	1988
Maximum speed (kn)	7,5
Cruising speed (kn)	5,5
Range (nm)	yes
Engine hours	4350



# STAVELSE KOTTER 1200

Engine cooling system	closed keelcooling
Drive	shaft
Engine controls	bowden cable
Gearbox	hydraulic
Bowthruster	hydraulic
Exhaust	dry
Thrust bearing	new 2017
Propeller type	fixed
Propeller blades	3
Propeller shaft material	steel
Shaft lubrication	grease
Electric bilge pump	yes
Electrical installation	12 / 220 volt
Generator	wet exhaust Zeise Multi Power
Running hours generator	1280
Start battery	180Ah - 2019
Service battery	2x 230Ah - 2019
Generator battery	65Ah - 2019
Battery monitor	yes
Battery charger	2x
Inverter	1x
Shorepower	with cable
Extra info	motorbase new 2018

## NAVIGATION

Compass	VDO
Electric compass	yes
Depth sounder	yes
Log	yes
Windset	yes
VHF	Icom



Autopilot	Robertson DL200
Rudder angle indicator	On autopilot
Radar	Simrad color
GPS	Robertson gps
Plotter	Geonav wide 7
Electronic chart(s)	Europe + Baltic states
AIS receiver	yes
Personal MOB transmitter	yes
Camera	In engine room
Navigation lights	yes
Searchlight	yes

## EQUIPMENT

Cockpit cover	yes
Bimini	yes
Cockpit cushions	yes
Cockpit table	yes
Boarding ladder	stainless steel
Deck shower	yes
Anchor	Delta
Anchor chain	yes
Anchor 2	Danforth
Anchor chain	yes
Windlass	manual
Windlass aft	
Dinghy	Steady 260
Outboard	suzuki 4 hp / 2 stroke incl. tank
Davits	stainless steel
Davits controls	manual
Sea railing	
Grab rail (superstructure)	stainless steel + teak



Railing side opening gates	yes
Lifejackets	2 + 2
Safety harness	yes
Lifebuoy	yes
Wiper	2x
Horn	air pressure
Binocular	yes
Fenders	yes
Mooring lines	yes
Spare parts	yes
Tools	yes
TV	yes
TV receiver	yes
Satellite	yes
Radio-cd player	yes
DVD player	yes
Surround Sound System	yes
Sub-woofer	yes
Speakers in salon	yes
Speakers in cabin	yes
Clock - barometer	yes
Fire extinguisher	3x
Latest extinguisher survey	2019
Extinguisher in engine room	1x

## RIGGING

Rigging	ketch-cutter
Standing rigging	wire
Material mast	aluminium
Mast lowering system	yes
Mainsail	yes





# STAVELSE KOTTER 1200

Mainsail cover	yes
Cutterstay	yes
Mizzen	yes
Mizzen sailcover	yes
Jib	yes
Genoa	yes
Genoa furler	yes
Cutter furler	yes
Reefing System	main in-boom furling
Backstay adjuster	mechanical
Boomvang	mechanical
Genoa sheetwinches	yes
Multifunctional winches	On mast
Isolated backstay	yes



# STAVERSE KOTTER 1200



# STAVERSE KOTTER 1200

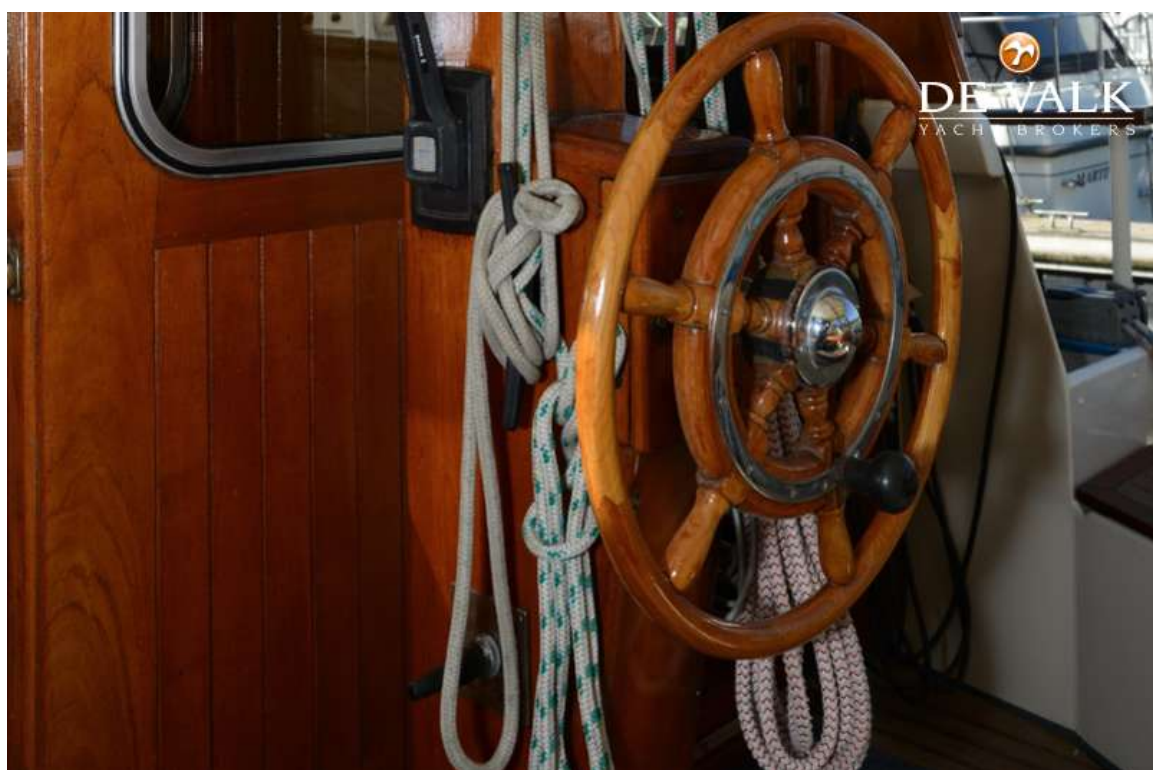




# STAVERSE KOTTER 1200



# STAVERSE KOTTER 1200

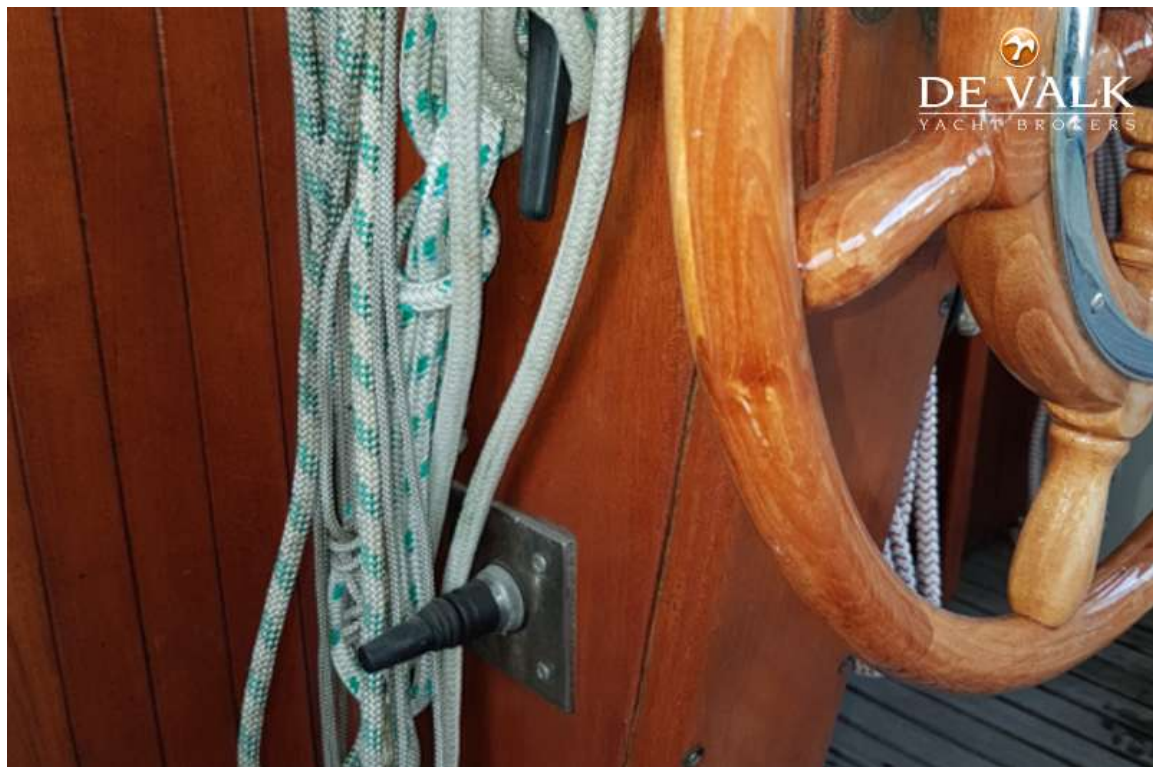




# STAVERSE KOTTER 1200

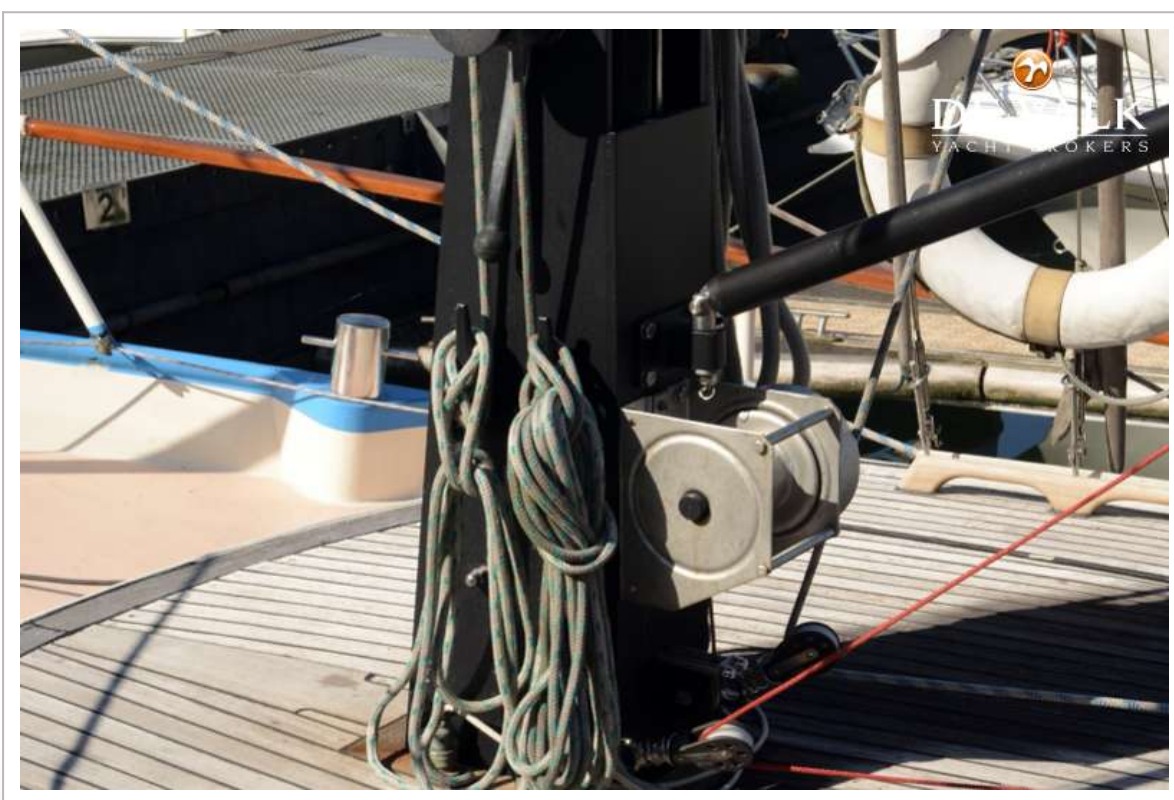


# STAVERSE KOTTER 1200





# STAVERSE KOTTER 1200





# STAVERSE KOTTER 1200

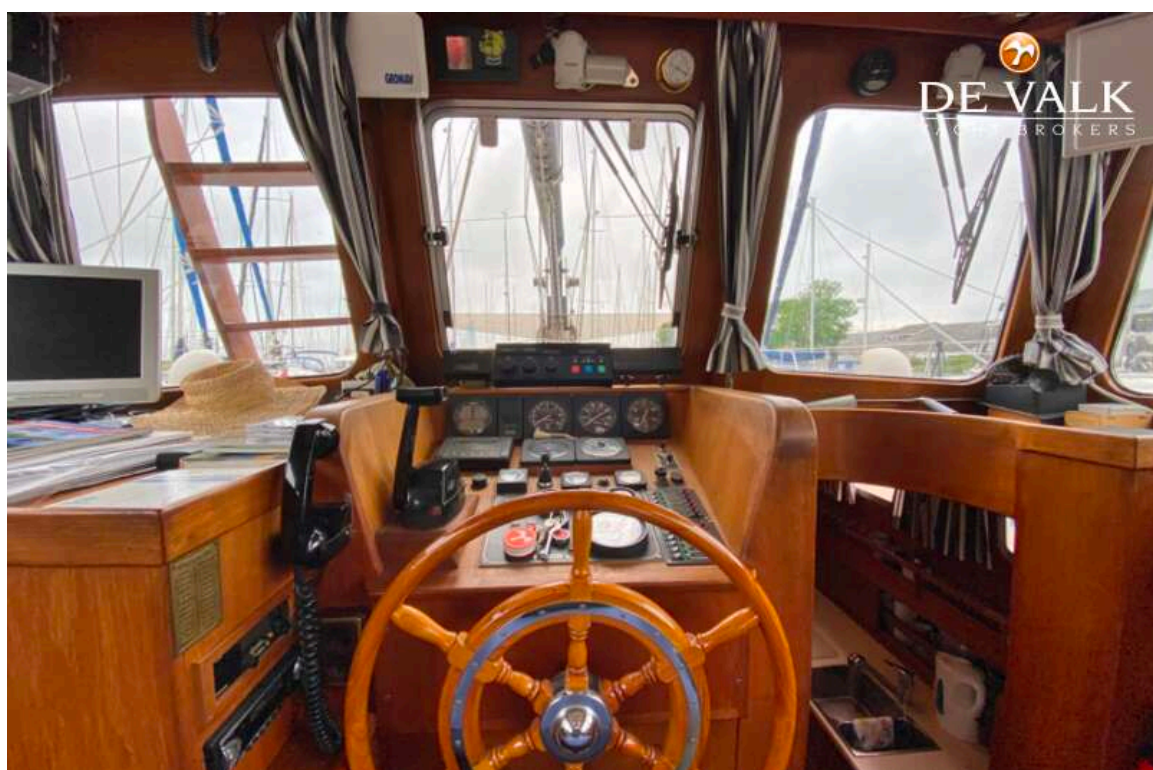


# STAVERSE KOTTER 1200

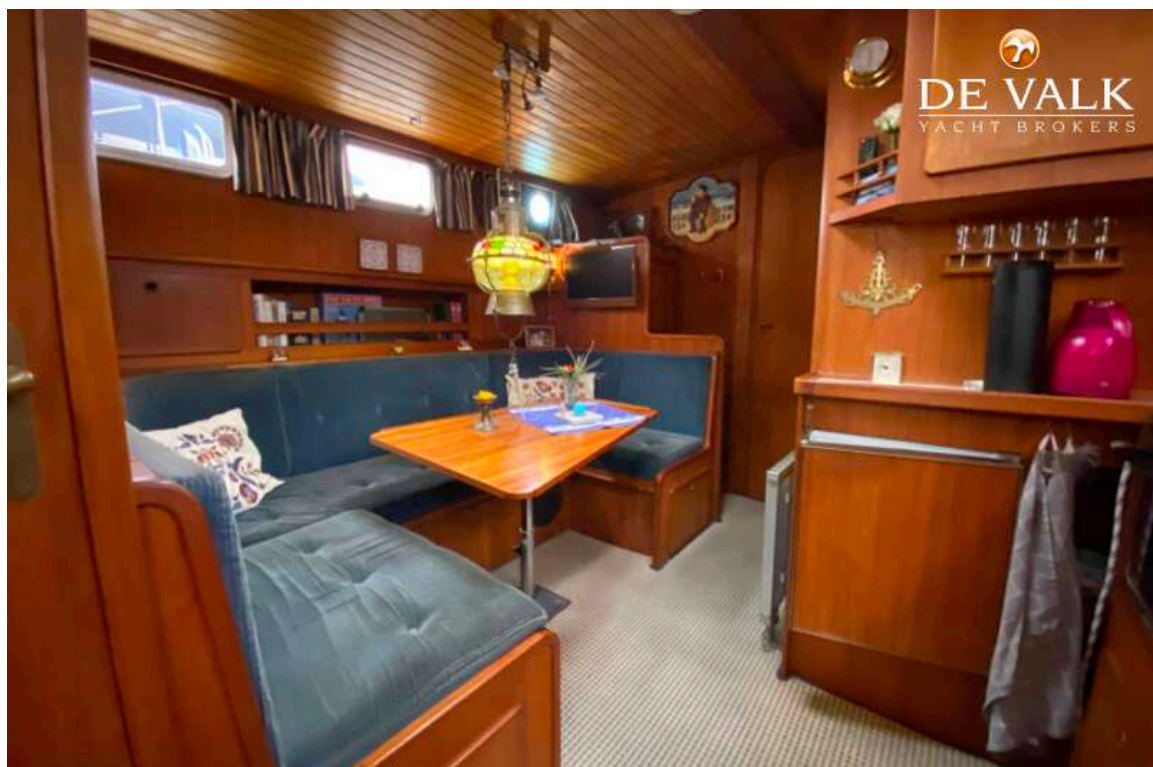




# STAVERSE KOTTER 1200

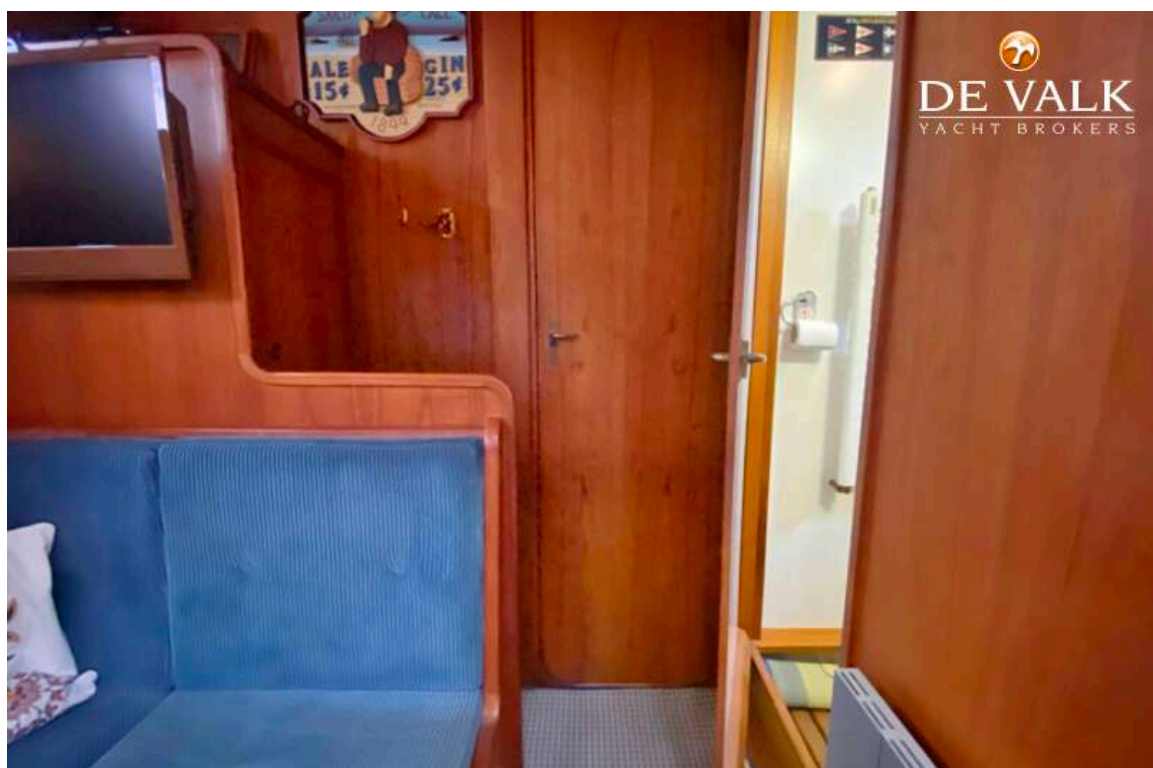
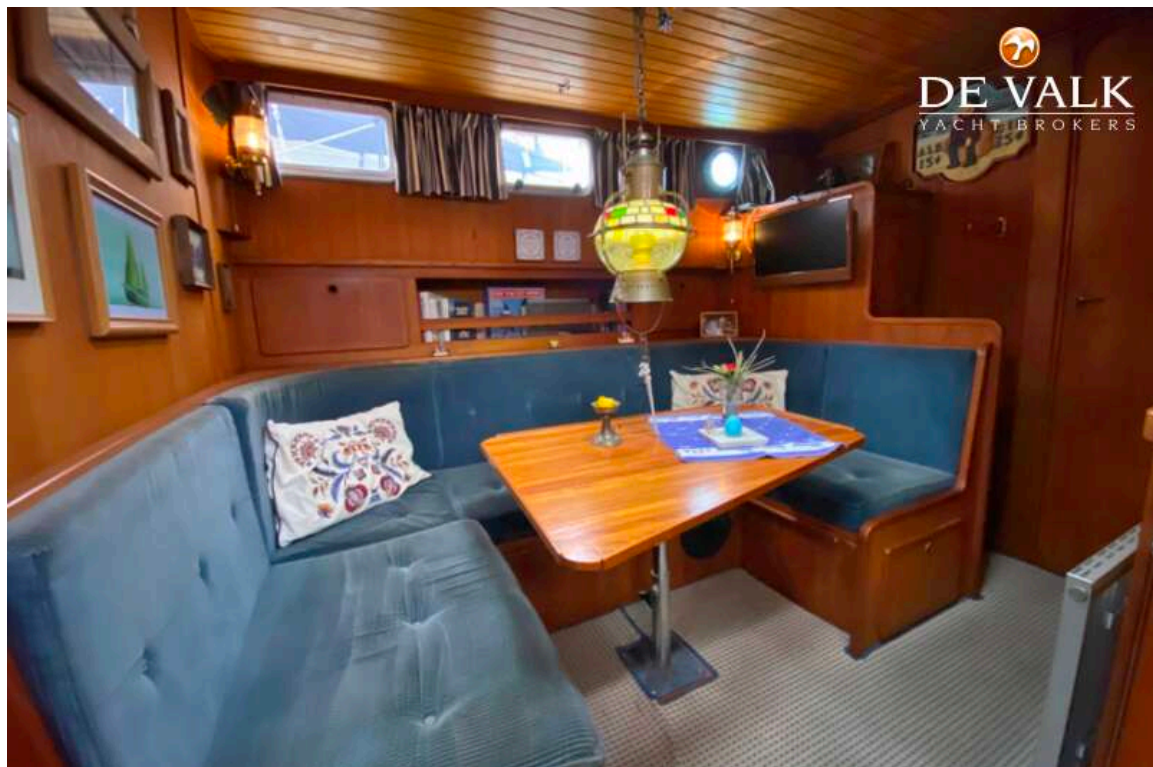


# STAVERSE KOTTER 1200

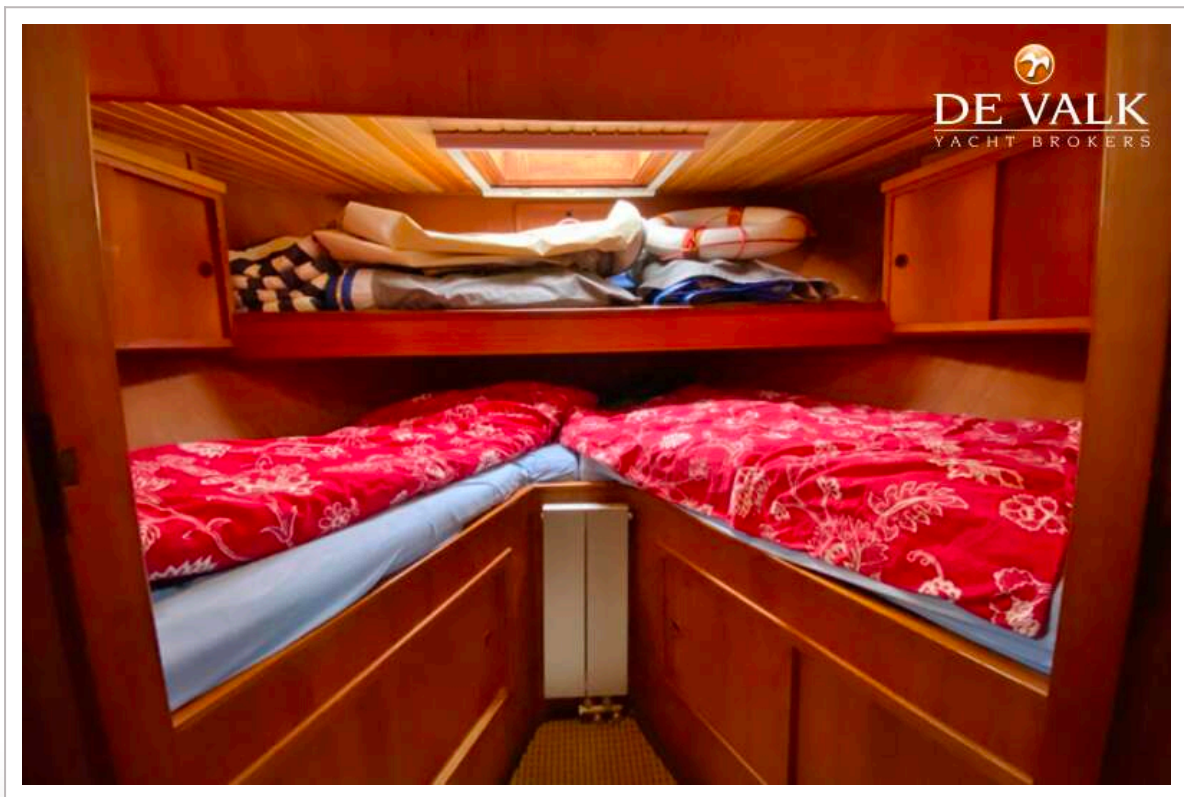
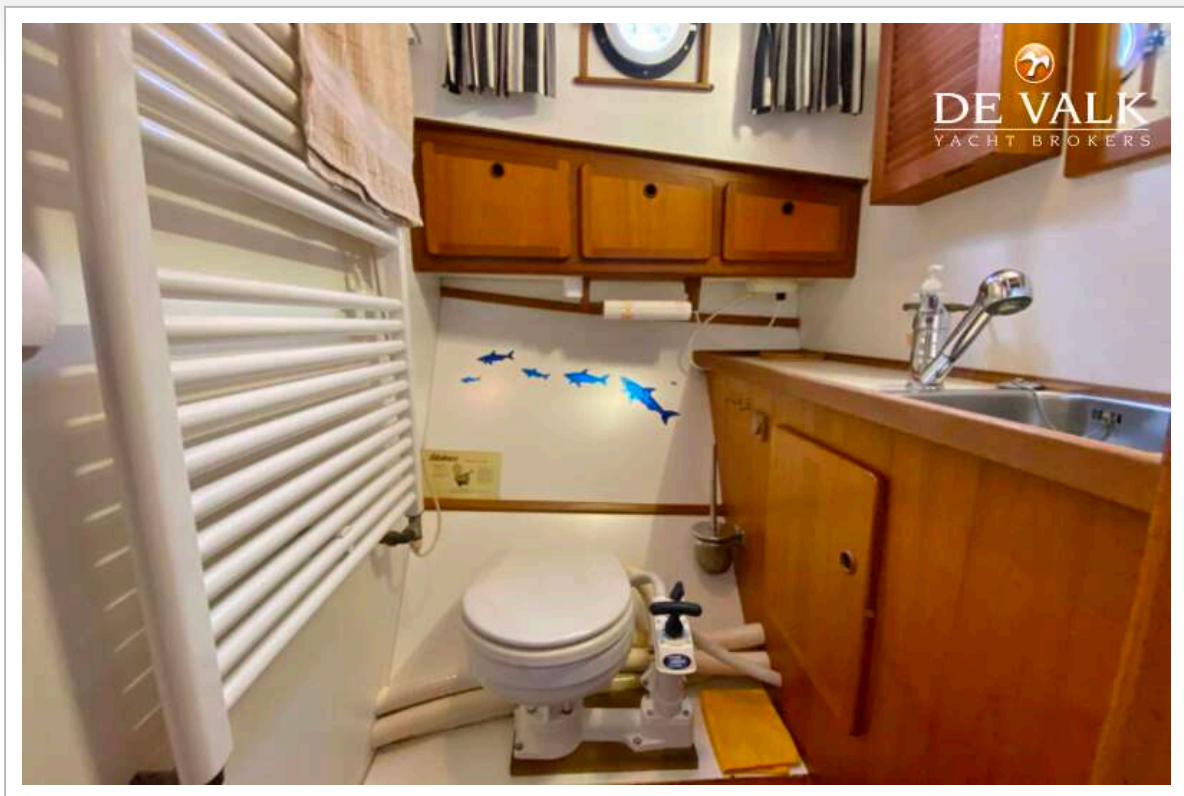




# STAVERSE KOTTER 1200

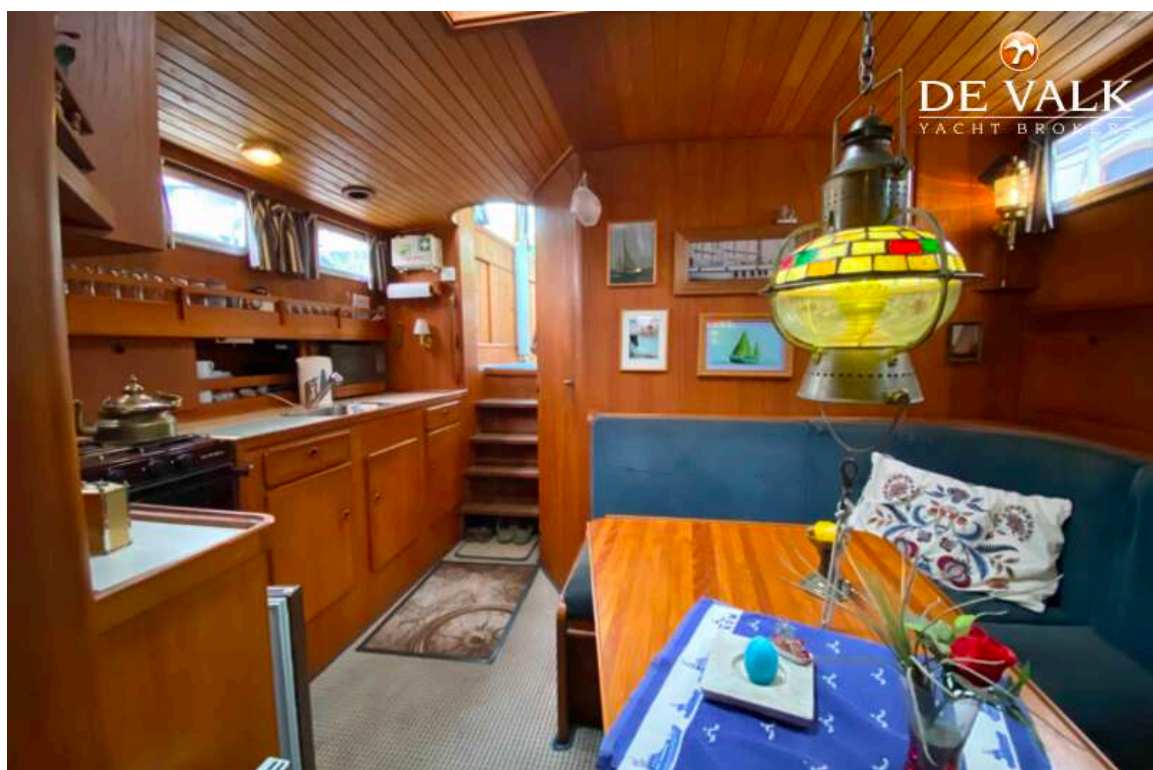
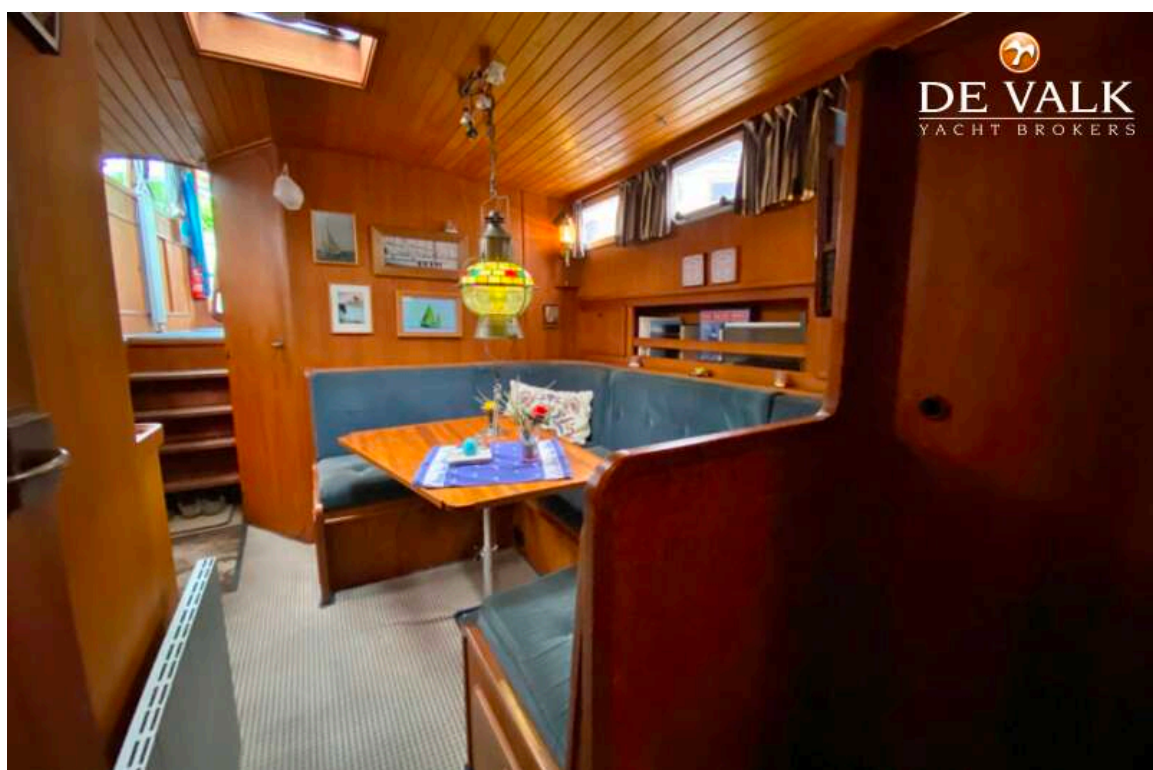


# STAVERSE KOTTER 1200

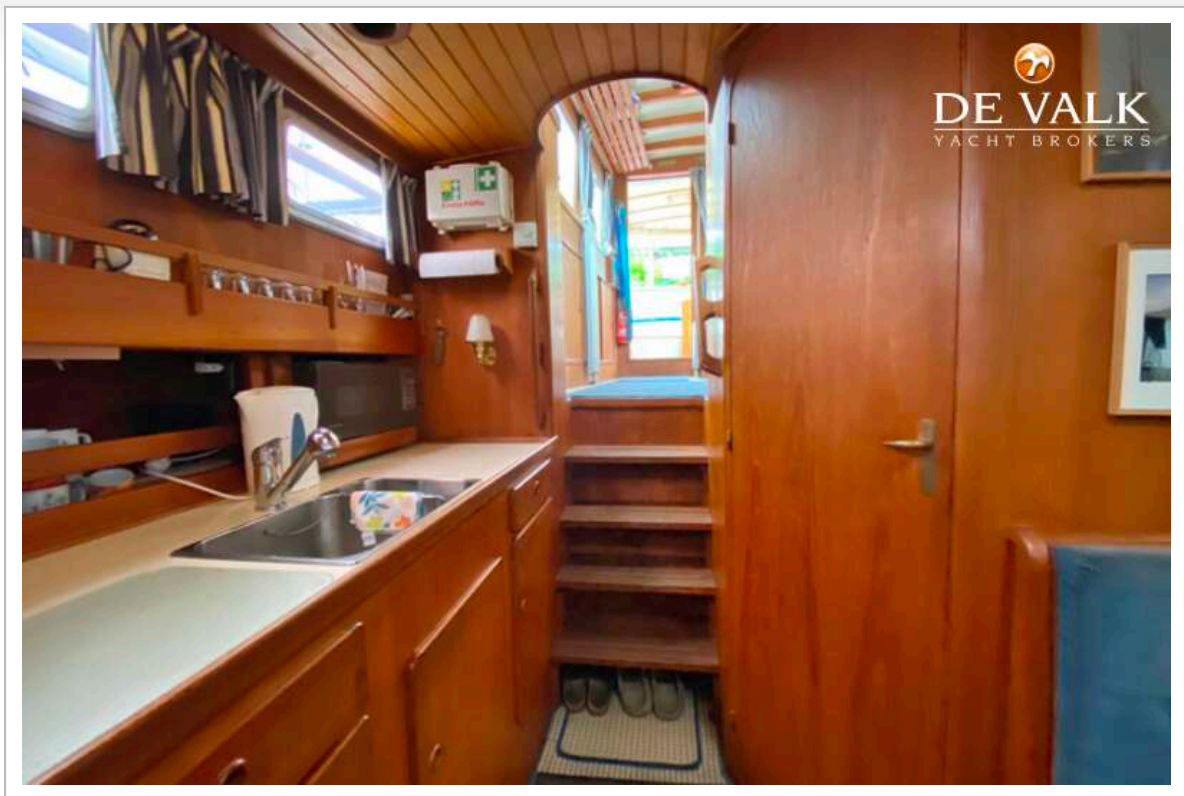




# STAVERSE KOTTER 1200



# STAVERSE KOTTER 1200





# STAVERSE KOTTER 1200



# STAVERSE KOTTER 1200

