



DE VALK  
YACHT BROKERS



## DUFOUR 44 PERFORMANCE



DE VALK  
YACHT BROKERS

# DUFOUR 44 PERFORMANCE

## BROKER'S COMMENTS

This 44 Performance has got the looks, the styling, performance and comfort one may expect from a modern contemporary yacht. Looks do count on a modern day yacht, the 44 design delivers. Optimal 3 cabin owner version layout with two bathrooms, large salon and galley area. Big storage areas and lots of light and ventilation below decks. On deck the layout is uncluttered and spacious enough to entertain family and friends. Easy access and control with a big steering wheel and a folding transom. This well maintained Dufour 44 Performance is now ready for a visit by us in Sint Annaland!

*Joris van de Rijt*

## SPECIFICATIONS

<b>Dimensions</b>	13.25 x 4.25 x 2.30 (m)	<b>Builder</b>	Dufour Yachts
<b>Built</b>	2004	<b>Cabins</b>	3
<b>Material</b>	GRP	<b>Berths</b>	6
<b>Engine(s)</b>	1 x Volvo Penta D2-55B diesel	<b>Hp/Kw</b>	55.00 (hp), 40.42 (kw)
<b>Asking price</b>	sold (VAT )	<b>Lying</b>	at sales office

## CONTACT

<b>Sales office</b>	De Valk Sint Annaland B.V.	<b>Telephone</b>	+31 (0)166 601 000
<b>Address</b>	Koelhuisweg 4 4697 RM Sint Annaland NL	<b>E-mail</b>	sintannaland@devalk.nl

## DISCLAIMER

These particulars are given in good faith as supplied but cannot be guaranteed.



# DUFOUR 44 PERFORMANCE

## GENERAL

Model	DUFOUR 44 PERFORMANCE
Type	sailing yacht
LOA (m)	13,25
LWL (m)	9,05
Beam (m)	4,25
Draft (m)	2,30
Air draft (m)	20,00
Headroom (m)	1,93
Year built	2004
Launched	2005
Builder	Dufour Yachts
Country	France
Designer	Humberto Felci / Patrick Roseo
Displacement (t)	10,3
Ballast (tonnes)	3,3
CE norm	A
Hull material	GRP
Hull colour	white
Hull shape	round-bilged
Keel type	fin keel with bulb
Superstructure material	GRP
Rubbing strake	stainless steel
Deck material	GRP
Deck finish	teak
Superstructure deck finish	non-skid moulded in
Cockpit deck finish	teak
Antifouling (year)	2021
Window frame	aluminium
Window material	perspex
Deckhatch	2 x



# DUFOUR 44 PERFORMANCE

## Portholes

Fuel tank (litre)	polyethylene 250
Level indicator (fuel tank)	yes
Freshwater tank (litre)	polyethylene 2 x 210
Level indicator (freshwater)	yes
Wheel steering	cable steering
Emergency tiller	yes

## ACCOMMODATION

Cabins	3
Berths	6
Interior	Moabi
Layout	3 cabins, 2 bathrooms, saloon
Floor	teak and holly
Saloon	yes
Headroom saloon (m)	1,93
Heating	diesel ducted hot air Webasto
Navigation center	yes
Chart table	yes
Aft Cabin	yes
Dinette	yes
Galley	yes
Countertop	corian
Sink	stainless steel
Cooker	calor gas ENO 4 burner
Oven	ENO
Fridge	Frigoboat with freezer
Hot water system	220V + engine
Water pressure system	electrical
Manual and/or foot pump	yes
Owners cabin	v-bed



# DUFOUR 44 PERFORMANCE

Bed length (m)	2,00 x 1,80
Wardrobe	hanging and shelves
Bathroom	en suite
Toilet	en suite
Toilet system	manual
Wash basin	in the bathroom
Shower	en suite
Guest cabin 1	double bed
Bed length (m)	2,05 x 1,40
Wardrobe	hanging and shelves
Bathroom	shared
Toilet	shared
Toilet system	manual
Wash basin	in the bathroom
Shower	shared
Guest cabin 2	double bed
Bed length (m)	2,05 x 1,40
Wardrobe	hanging and shelves

## MACHINERY

No of engines	1
Make	Volvo Penta
Type	D2-55B
HP	55
kW	40,42
Fuel	diesel
Year installed	2004
Maximum speed (kn)	7,8
Cruising speed (kn)	6,5
Consumption (l/hr)	2,5
Engine hours	1475



# DUFOUR 44 PERFORMANCE

Engine cooling system	freshwater heat exchanger
Drive	sail-drive
Saildrive seal	2021
Engine controls	bowden cable
Gearbox	mechanical
Exhaust	watercooled
Propeller type	folding Gori
Propeller blades	3
Manual bilge pump	yes
Electric bilge pump	yes
Electrical installation	12V / 230V
Start battery	1 x
Service battery	2 x 140 ah (2020)
Battery monitor	Mastervolt
Battery charger	Cristec CPS 720 60 A
Solar panel	yes
Shorepower	with cable

## NAVIGATION

Compass	Plastimo
Depth sounder/log	2 x Raymarine ST60 tridata
Windset	2 x Raymarine
VHF	Navrant VHF 7100
VHF handheld	Cobra
Autopilot	Raymarine ST7001
Rudder angle indicator	On autopilot
Radar/GPS/plotter	Raymarine Rc435 + Raymarine C80
Navtex	ICS NAV6
Electronic chart(s)	yes
Navigation lights	yes



## EQUIPMENT

Sprayhood with grab rail	2021 (not yet installed)
Cockpit cover	yes
Winter cover	yes
Cockpit table	yes
Bathing platform	yes
Boarding ladder	stainless steel
Deck shower	yes
Anchor	Delta
Anchor chain	yes
Windlass	electrical Quick
Dinghy	inflatable Talamex
Outboard	Suzuki 2 pk
Outboard support	yes
Sea railing	wire
Grab rail (superstructure)	teak
Life raft	
Last life raft survey	Needs survey
Lifebuoy	yes
Radar reflector	yes
Fenders	yes
Mooring lines	yes
Spare parts	yes
Tools	yes
Radio-cd player	Vdo
Speakers in salon	yes
Clock - barometer	yes
Fire extinguisher	yes

## RIGGING

Rigging	fractional
---------	------------



# DUFOUR 44 PERFORMANCE

<b>Standing rigging</b>	wire
<b>Brand mast</b>	Sparcraft
<b>Material mast</b>	aluminium
<b>Spreaders</b>	2 sets
<b>Keel stepped mast</b>	yes
<b>Mainsail</b>	2005
<b>Mainsail cover</b>	yes
<b>Genoa II</b>	2005
<b>Genoa furler</b>	Facnor R290
<b>Reefing System</b>	quick-one-line-reefing
<b>Backstay adjuster</b>	mechanical
<b>Boomvang</b>	gasspring
<b>Genoa sheetwinches</b>	2 x Harken 53 st
<b>Multifunctional winches</b>	halyard/sheet winches 2x Harken 44 st





# DUFOUR 44 PERFORMANCE



# DUFOUR 44 PERFORMANCE





# DUFOUR 44 PERFORMANCE

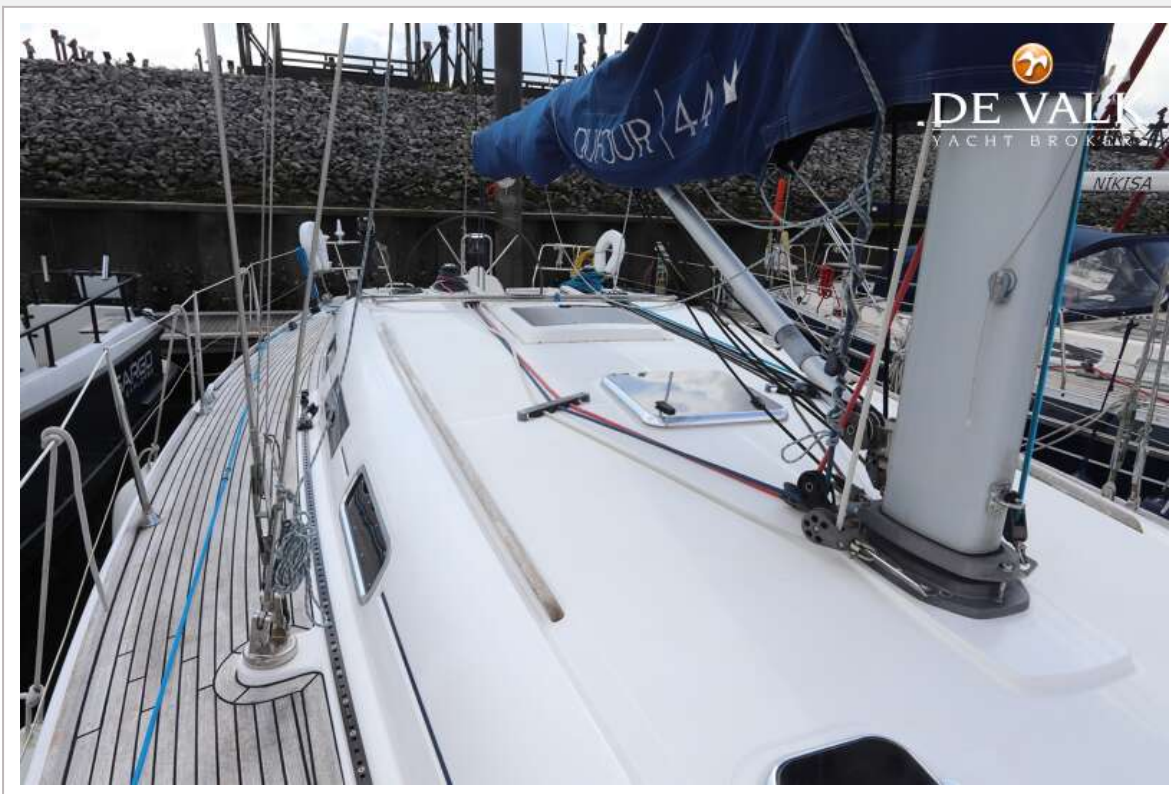


# DUFOUR 44 PERFORMANCE





# DUFOUR 44 PERFORMANCE



# DUFOUR 44 PERFORMANCE

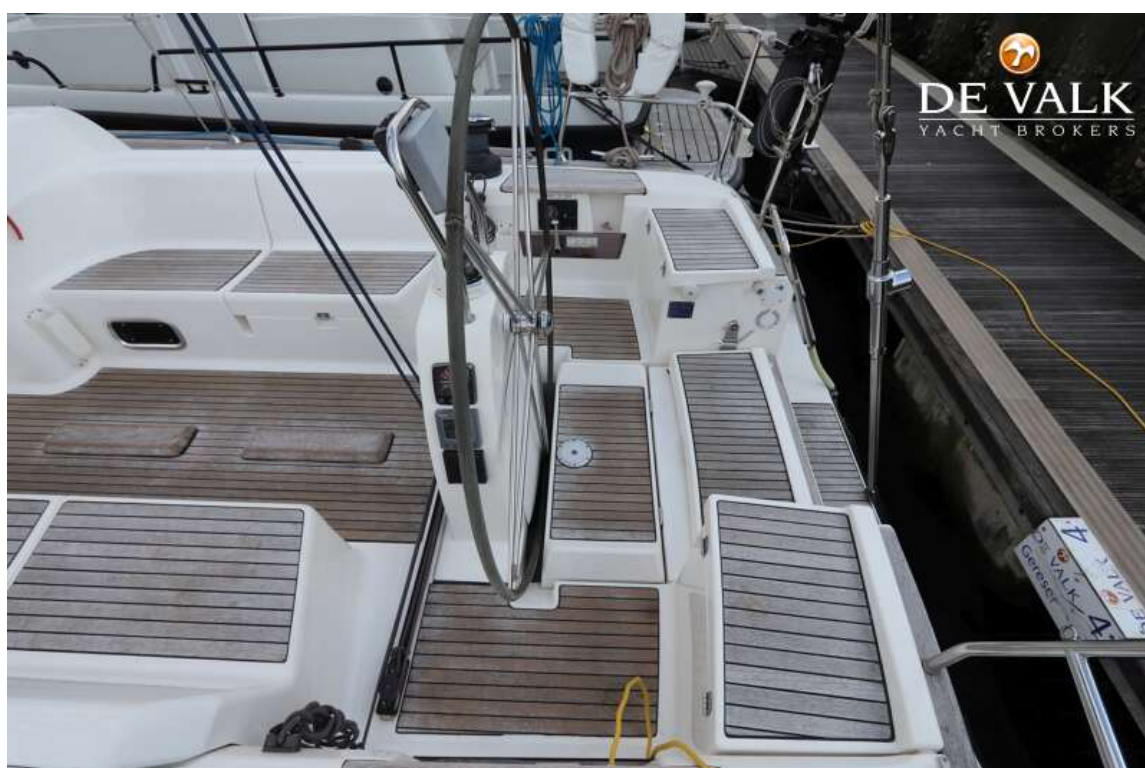
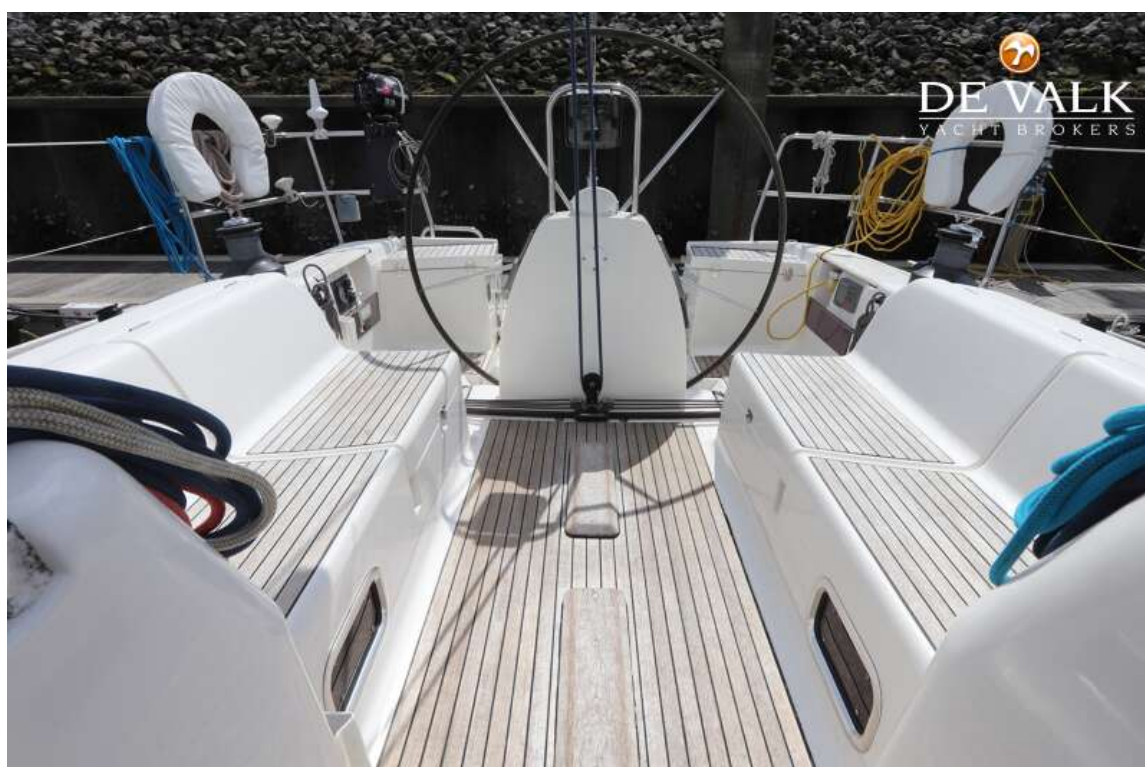




# DUFOUR 44 PERFORMANCE

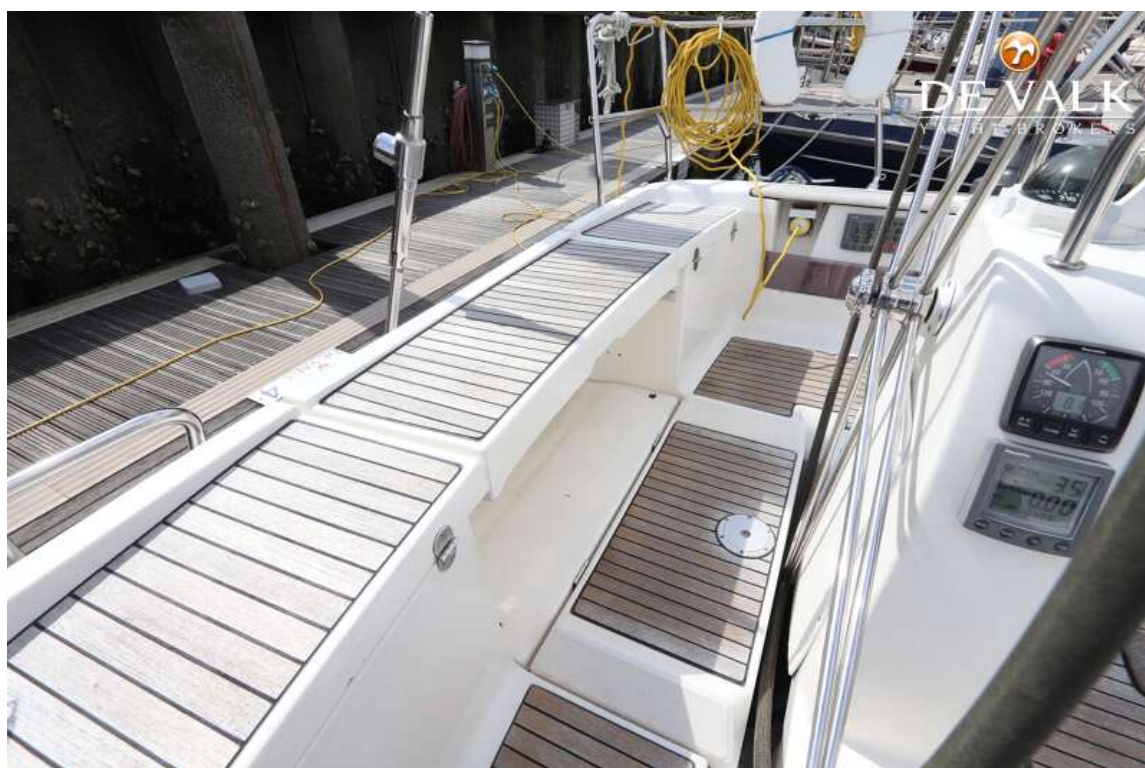


# DUFOUR 44 PERFORMANCE





# DUFOUR 44 PERFORMANCE

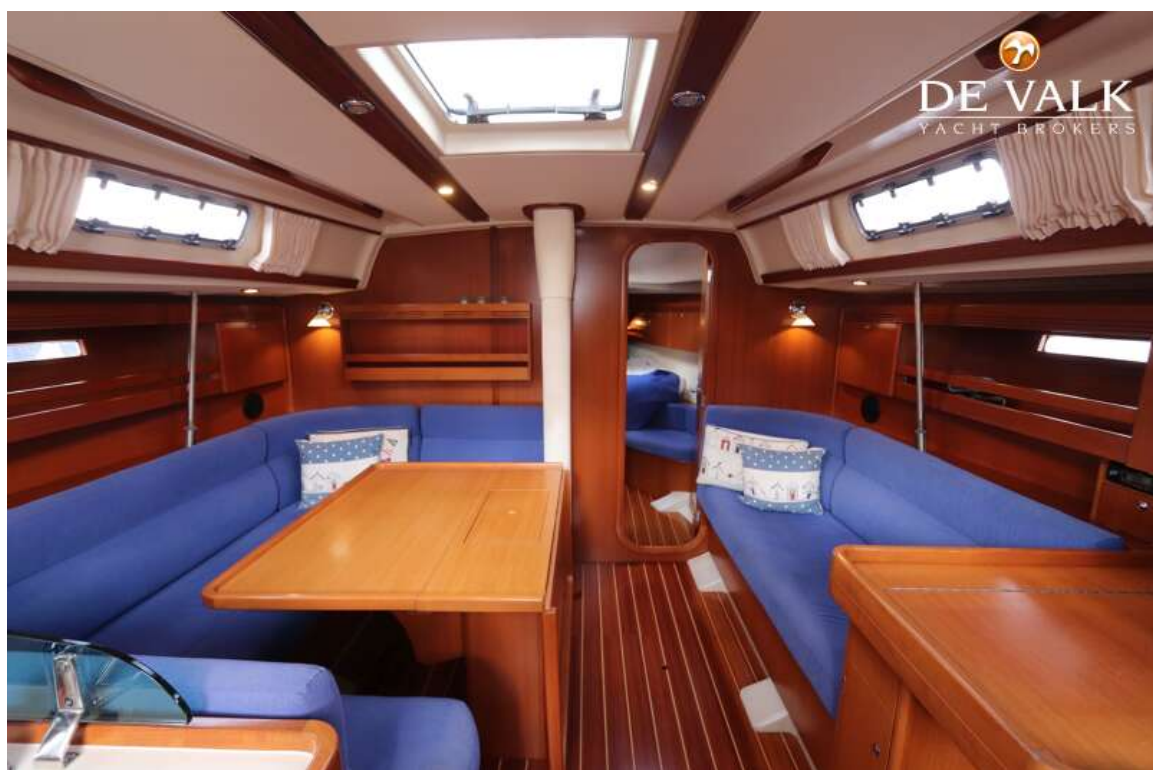


# DUFOUR 44 PERFORMANCE





# DUFOUR 44 PERFORMANCE



# DUFOUR 44 PERFORMANCE





# DUFOUR 44 PERFORMANCE



# DUFOUR 44 PERFORMANCE

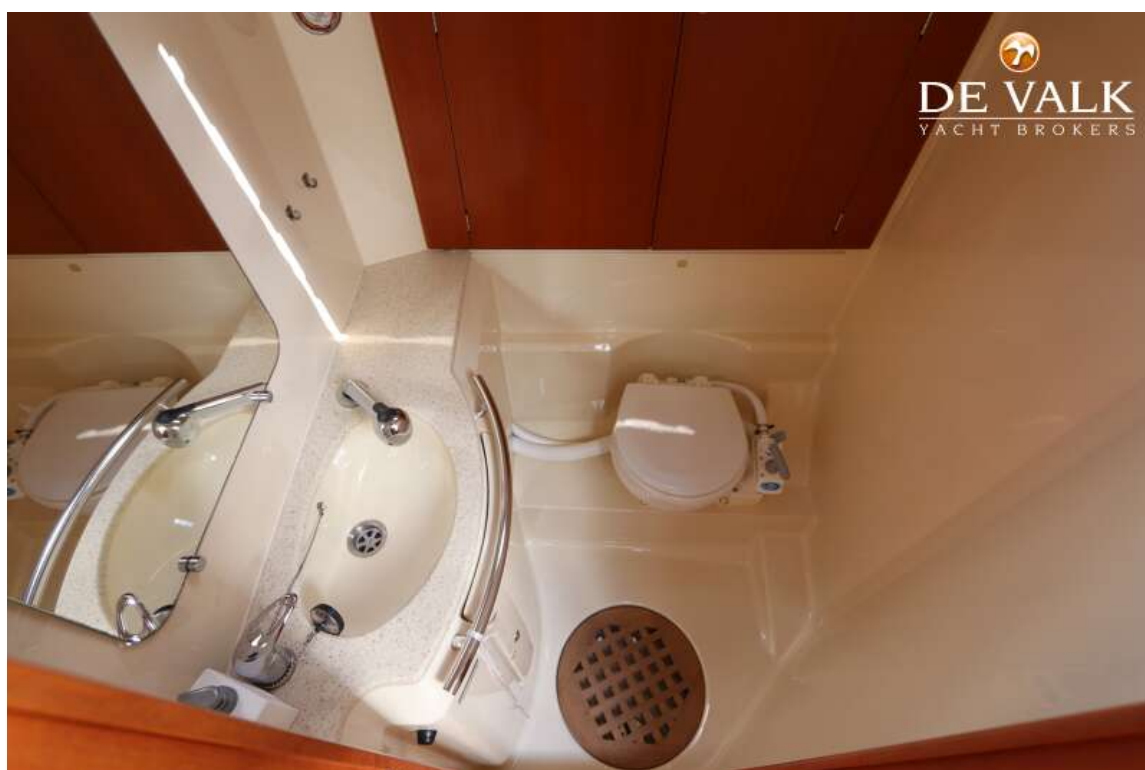




# DUFOUR 44 PERFORMANCE

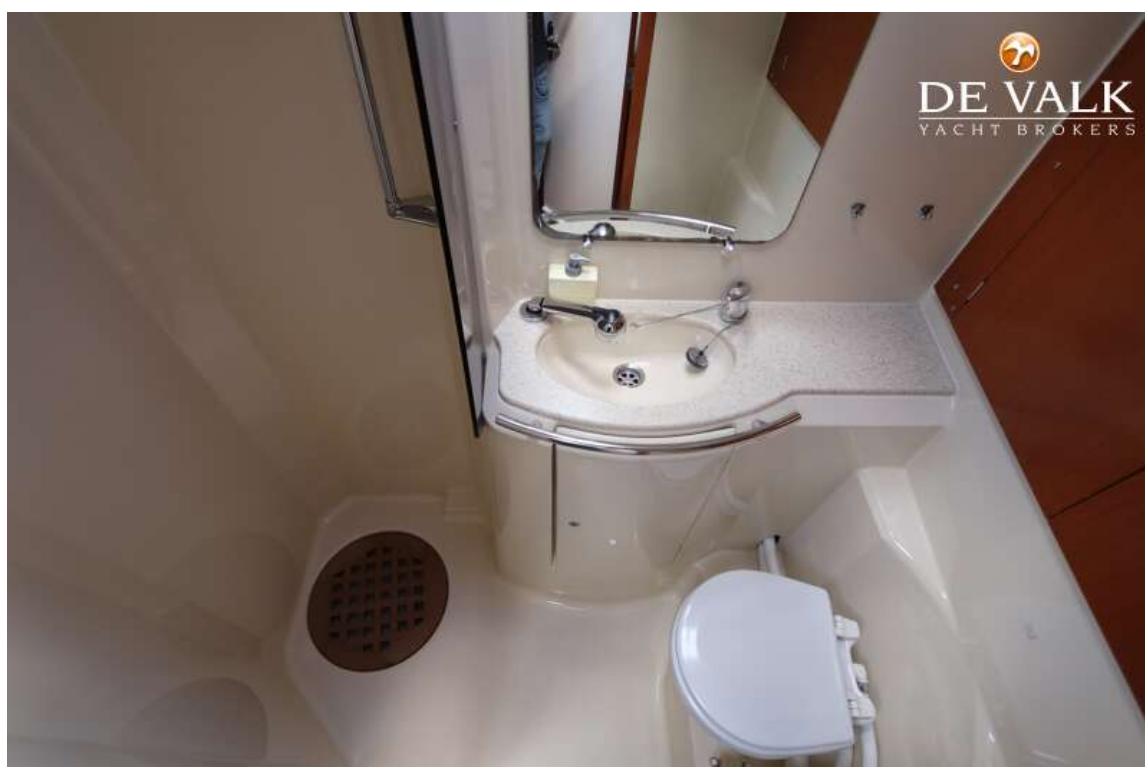


## DUFOUR 44 PERFORMANCE

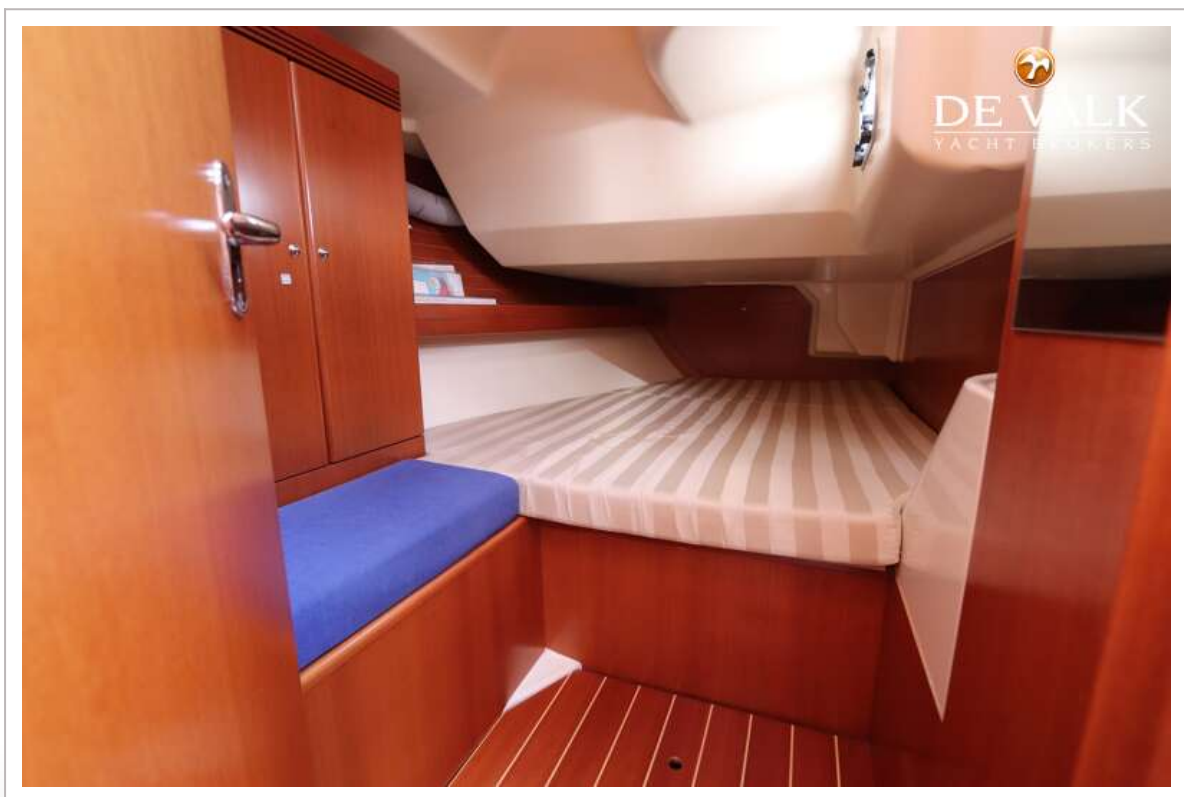
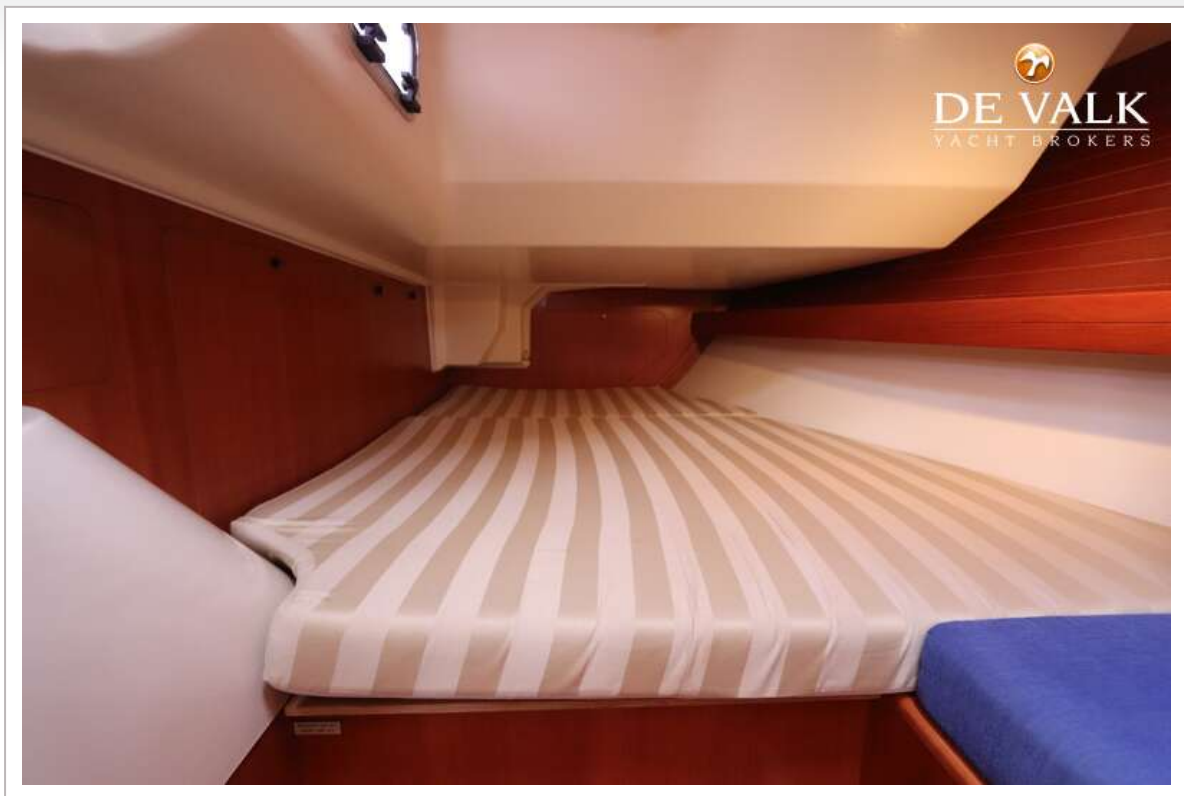




# DUFOUR 44 PERFORMANCE



# DUFOUR 44 PERFORMANCE



# DUFOUR 44 PERFORMANCE





# DUFOUR 44 PERFORMANCE



# DUFOUR 44 PERFORMANCE

