



## BAVARIA 37



DE VALK  
YACHT BROKERS

## BROKER'S COMMENTS

The Bavaria 37 is a fine family sailing yacht with a beautifully detailed mahogany interior that is bright and comfortable. It is a well-known classic and built according to Lloyds specifications, equipped with a Volvo Penta engine, "roll in the mast" mainsail and a genoa reefing system. This Bavaria 37 is a perfect yacht for both the beginning as the advanced sailor. If you are interested, we look forward to seeing you at our location in Hindeloopen!

*Henri van Eelen*

## SPECIFICATIONS

<b>Dimensions</b>	11.28 x 3.65 x 1.45 (m)	<b>Builder</b>	Bavaria Yachtbau GmBh
<b>Built</b>	1996	<b>Cabins</b>	2
<b>Material</b>	GRP	<b>Berths</b>	4
<b>Engine(s)</b>	1 x Volvo MD2030 diesel	<b>Hp/Kw</b>	29.00 (hp), 21.34 (kw)
<b>Asking price</b>	sold (VAT )	<b>Lying</b>	at sales office

## CONTACT

<b>Sales office</b>	De Valk Hindeloopen B.V.	<b>Telephone</b>	+31 514 52 40 00
<b>Address</b>	Oosterstrand 1 8713 JS Hindeloopen NL	<b>E-mail</b>	hindeloopen@devalk.nl

## DISCLAIMER

These particulars are given in good faith as supplied but cannot be guaranteed.



## GENERAL

Model	BAVARIA 37
Type	sailing yacht
LOA (m)	11,28
LWL (m)	9,69
Beam (m)	3,65
Draft (m)	1,45
Air draft min (m)	17,10
Headroom (m)	1,98
Year built	1996
Builder	Bavaria Yachtbau GmbH
Country	Germany
Designer	J&J Design
Displacement (t)	5,95
Ballast (tonnes)	2,2
Hull material	GRP
Hull colour	white
Hull shape	round-bilged
Keel type	fin keel with bulb
Superstructure material	GRP
Rubbing strake	aluminum
Deck material	GRP
Deck finish	non-skid moulded in
Superstructure deck finish	non-skid moulded in
Cockpit deck finish	teak
Antifouling (year)	2021
Window frame	aluminium
Deckhatch	2x
Fuel tank (litre)	stainless steel 150 ltr.
Freshwater tank (litre)	polyethylene 2x 150 ltr.
Blackwater tank (litre)	100 ltr.



Blackwater tank extraction	pump
Wheel steering	cable steering
Emergency tiller	yes
More info on hull	yes

## ACCOMMODATION

Cabins	2
Berths	4
Interior	mahogany
Floor	woodprint
Saloon	yes
Headroom saloon (m)	1.98 mtr.
Heating	diesel ducted hot air Webasto
Navigation center	yes
Chart table	yes
Galley	yes
Countertop	plastic
Sink	stainless steel Double
Cooker	calor gas 2 pits
Oven	In cooker
Fridge	yes
Hot water system	220V + engine Boiler
Water pressure system	electrical
Owners cabin	v-bed
Bed length (m)	2 mtr.
Wardrobe	hanging and shelves
Guest cabin 1	double bed 2m x 2m
Bed length (m)	2 mtr.
Wardrobe	hanging and shelves
Bathroom	shared
Toilet	Jabsco



Toilet system	manual
Wash basin	
Shower	
Extra info	portholes and front hatch fitted with fly screens Patrijspoorten en voorluik voorzien van hor

## MACHINERY

No of engines	1
Make	Volvo
Type	MD2030
HP	29
kW	21.34
Fuel	diesel
Maximum speed (kn)	7
Cruising speed (kn)	6
Engine cooling system	freshwater heat exchanger
Drive	sail-drive
Engine controls	bowden cable
Gearbox	mechanical
Exhaust	watercooled
Propeller type	fixed
Propeller blades	2
Manual bilge pump	yes
Electric bilge pump	yes
Start battery	1x 70Ah
Service battery	3x 100Ah
Battery charger	Victron Centaur 12V-40Amp.
Inverter	yes
Shorepower	with cable

## NAVIGATION



Compass	Suunto
Electric compass	Autohelm
Depth sounder	Autohelm
Log	Autohelm
Windset	Autohelm
Repeater	ST 60 (inside)
VHF	Shipmate RS 8300
Autopilot	ST 4000 Wheel
Plotter/GPS	Raytheon RC420 (inside) Raymarine E7 Touch (outside)
AIS receiver	yes
Navigation lights	yes
Extra info	Mag Lite

## EQUIPMENT

Sprayhood with grab rail	yes
Sun awning	yes
Cockpit table	yes
Cockpit chairs	yes
Bathing platform	yes
Boarding ladder	stainless steel
Deck shower	yes
Anchor	CQR Plough
Anchor chain	yes
Windlass	
Sea railing	wire
Grab rail (superstructure)	stainless steel
Railing side opening gates	yes
Pushpit	yes
Pulpit	yes
Lifebuoy	yes
Safety lines on deck	yes



Fenders	yes
Mooring lines	yes
TV	Toshiba
Radio-cd player	Sony
DVD player	In TV
Speakers in salon	yes
Clock - barometer	yes
Fire extinguisher	yes

## RIGGING

Rigging	sloop
Standing rigging	wire
Brand mast	Seldén
Material mast	aluminium
Spreaders	2 pair
Fully battened mainsail	yes
Stoway mast	yes
Genoa	yes
Genoa furler	yes
Reefing System	main in-mast furling
Backstay adjuster	tackle
Boomvang	tackle
Genoa sheetwinches	2 x Harken ST44
Halyard winches	2 x Harken ST40
Spi-pole	aluminium
Isolated backstay	Yes



# BAVARIA 37

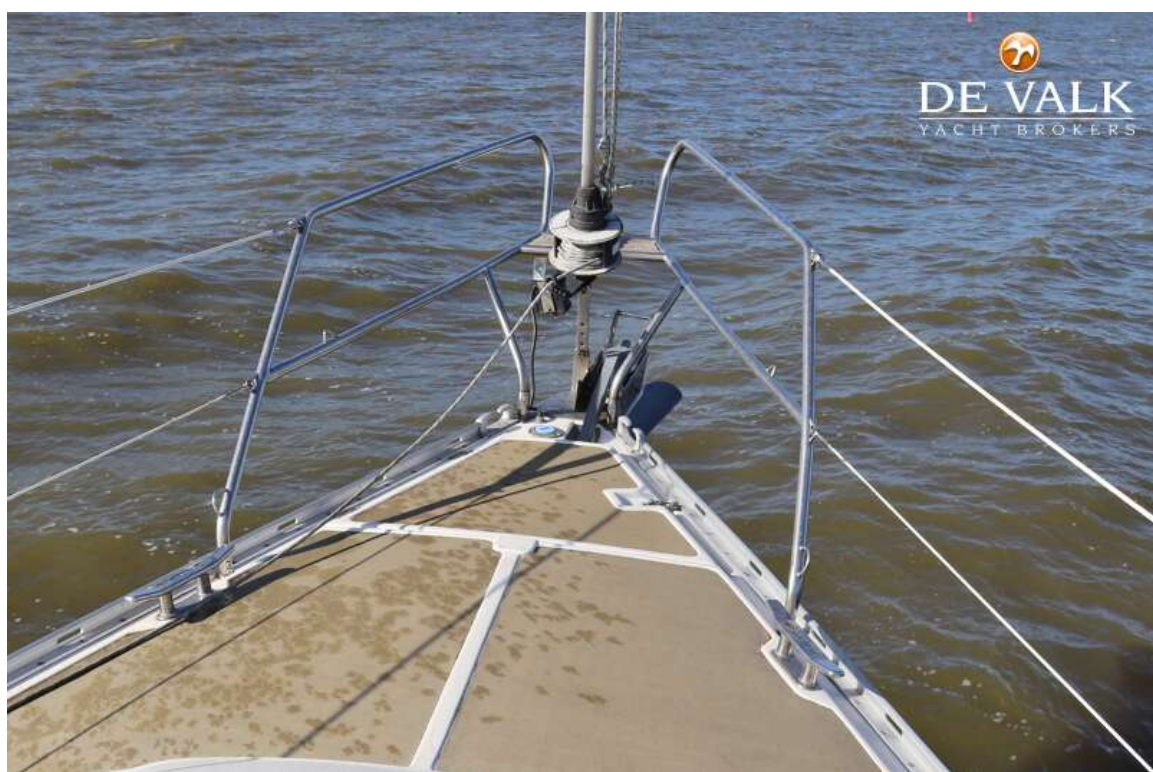




## BAVARIA 37

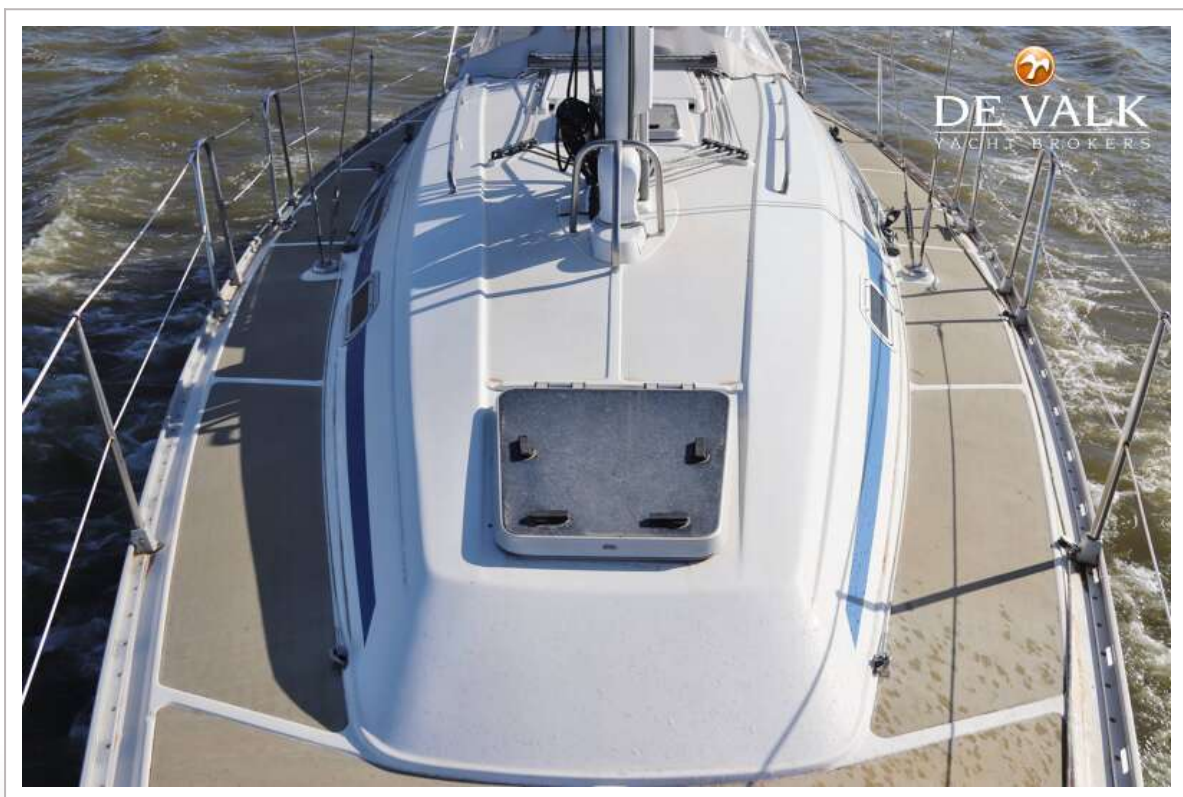


## BAVARIA 37





## BAVARIA 37



## BAVARIA 37





## BAVARIA 37

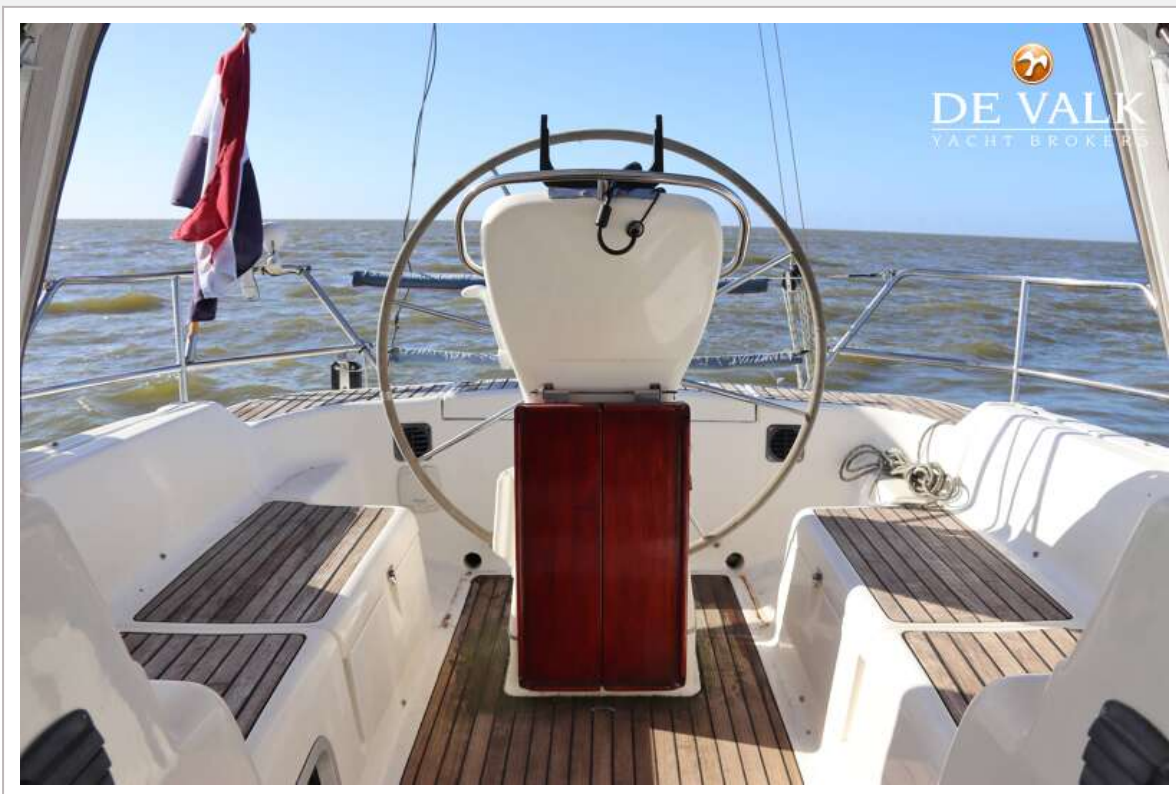


## BAVARIA 37





## BAVARIA 37



## BAVARIA 37





## BAVARIA 37



## BAVARIA 37

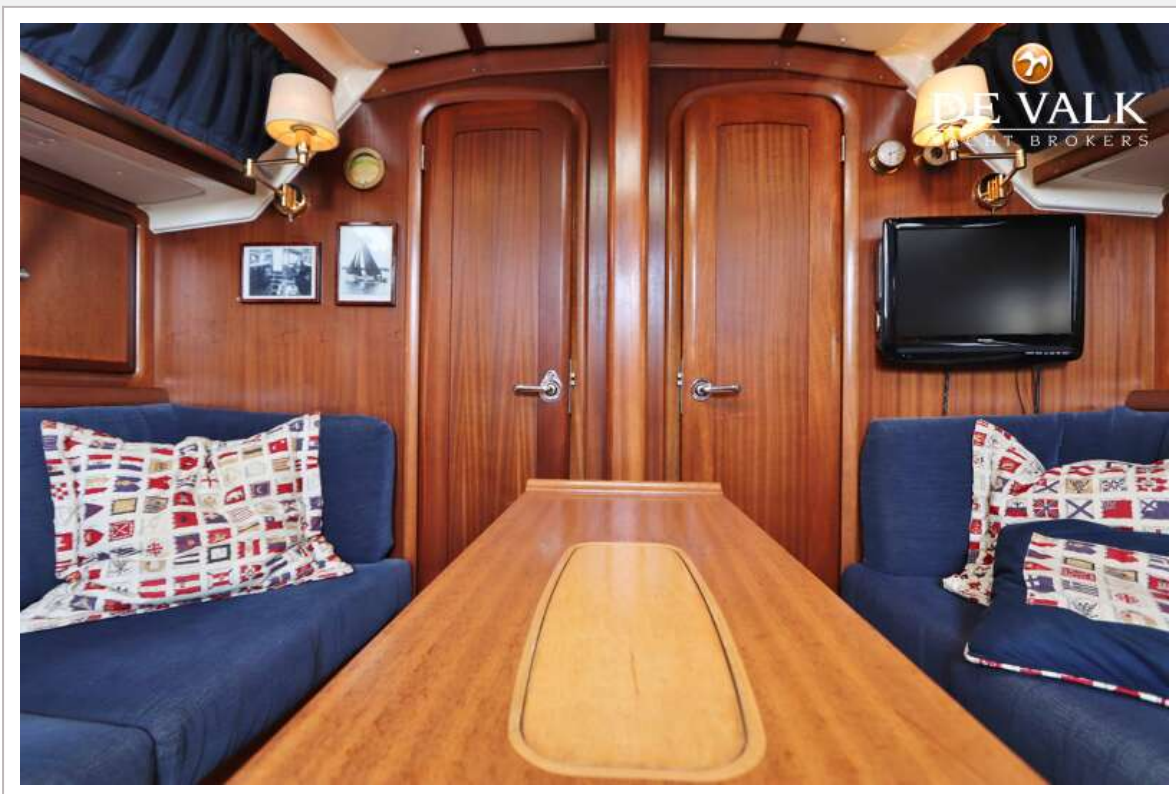




## BAVARIA 37

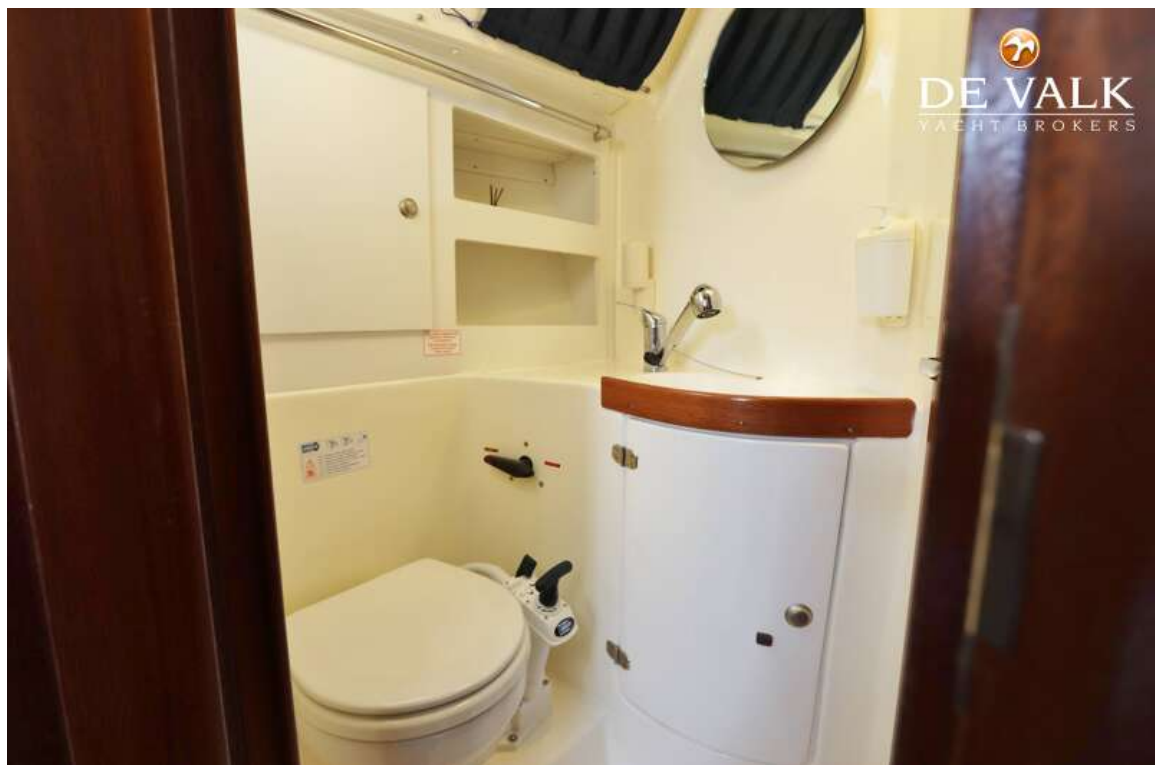


## BAVARIA 37

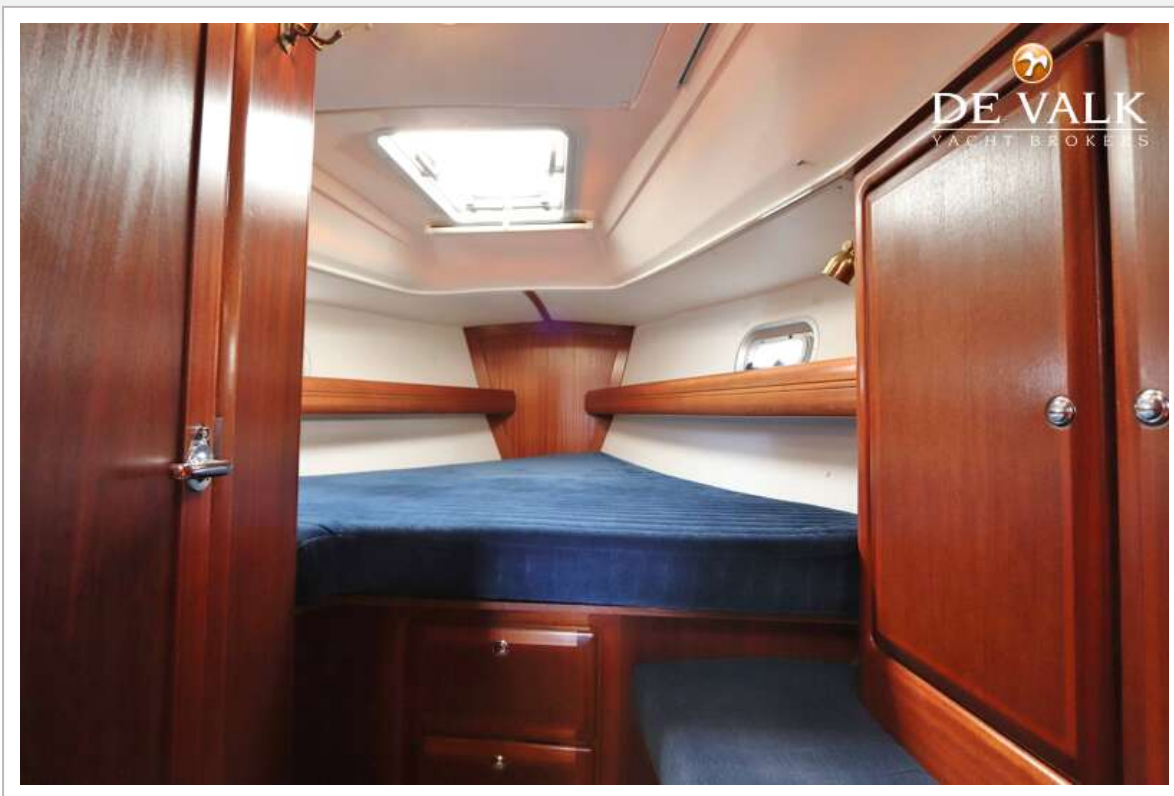




## BAVARIA 37



## BAVARIA 37

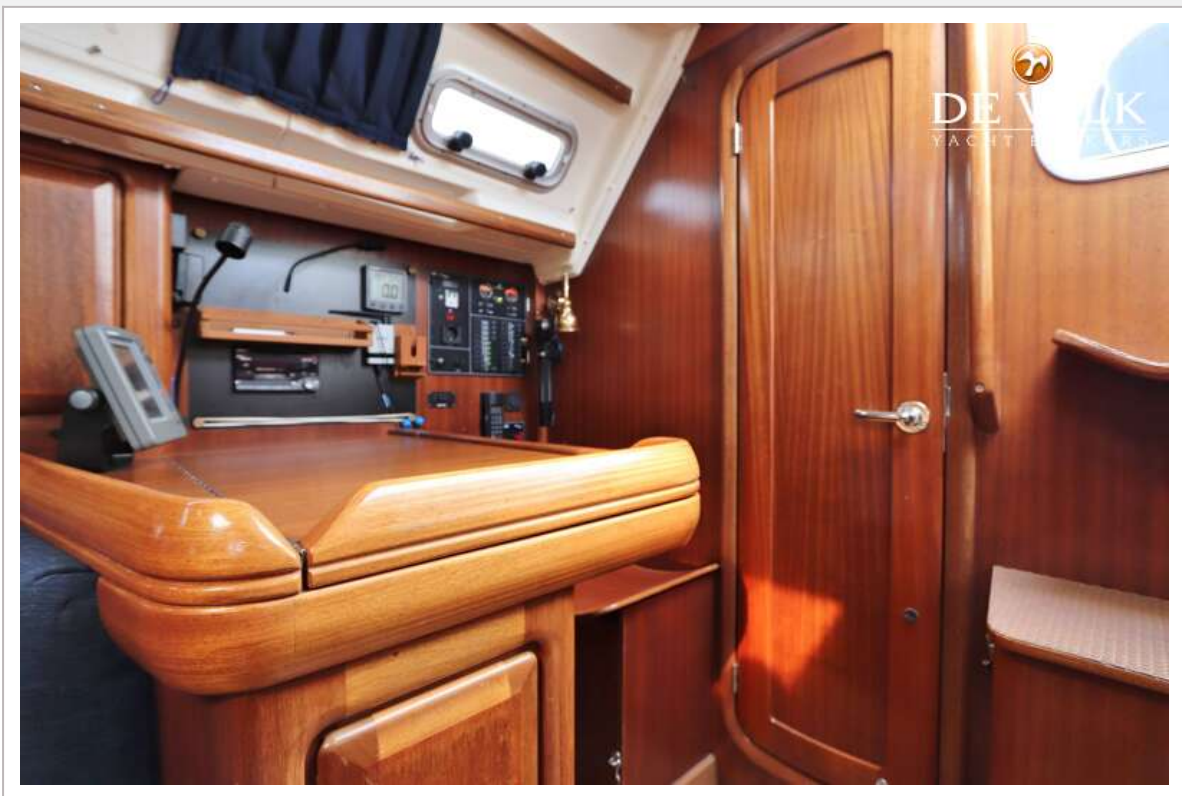




## BAVARIA 37



## BAVARIA 37





## BAVARIA 37



