



SWAN 44 MKII



SWAN 44 MKII

BROKER'S COMMENTS

This Swan 44 MK II, designed by German Frers, is a beautiful, but above all sporty sailing yacht. She has good sailing qualities, which are due, among other things, to her top and bottom line and her extensive range of sails. This Swan 44 MK II also has the necessary comfort, a teak interior and sleeping accommodation for up to 7 people. She is ready for family cruises, but you can also feel free to participate in a regatta. Also participation in e.g. the "ARC" is no problem for this Swan 44 MK II. We look forward to seeing this yacht at our office in Hindeloopen.

Hans Visser

SPECIFICATIONS

Dimensions	13.40 x 4.24 x 2.18 (m)	Builder	Oy NAUTOR Ab
Built	1998	Cabins	2
Material	GRP	Berths	7
Engine(s)	1 x Volvo MD 22L BT diesel	Hp/Kw	50.00 (hp), 36.80 (kw)
Asking price	sold (VAT)	Lying	at sales office

CONTACT

Sales office	De Valk Hindeloopen B.V.	Telephone	+31 514 52 40 00
Address	Oosterstrand 1 8713 JS Hindeloopen NL	E-mail	hindeloopen@devalk.nl

DISCLAIMER

These particulars are given in good faith as supplied but cannot be guaranteed.



GENERAL

Model	SWAN 44 MKII
Type	sailing yacht
LOA (m)	13,40
LWL (m)	10,56
Beam (m)	4,24
Draft (m)	2,18
Air draft (m)	20,00
Headroom (m)	1,95
Year built	1998
Builder	Oy NAUTOR Ab
Country	Finland
Designer	German Frers
Displacement (t)	12,4
Ballast (tonnes)	lead 3,8
CE norm	A
Hull material	GRP
Hull colour	white
Hull shape	round-bilged
Keel type	fin keel with bulb
Superstructure material	GRP
Rubbing strake	aluminum
Deck material	GRP
Deck finish	teak
Superstructure deck finish	teak Non-skid moulded in
Cockpit deck finish	teak
Antifouling (year)	2023
Dorades	2x
Window frame	aluminium
Window material	tempered glass
Deckhatch	3 large and 4 small Goyot



Portholes	aluminium 6x
Fuel tank (litre)	stainless steel 250 ltr. with inspection opening
Fuel tank 2 (litre)	stainless steel 150 ltr. with inspection opening
Level indicator (fuel tank)	yes
Freshwater tank (litre)	stainless steel 2x 190 ltr.
Level indicator (freshwater)	yes
Blackwater tank (litre)	stainless steel Aft toilet 50 ltr.
Blackwater tank extraction	deck extraction + uw line
Wheel steering	chain steering Rudder Bearing 2019
Emergency tiller	yes

ACCOMMODATION

Cabins	2
Berths	7
Interior	teak
Floor	teak and holly
Saloon	yes
Headroom saloon (m)	1,95 mtr.
Heating	diesel ducted hot air Webasto Airtop
Navigation center	yes
Chart table	yes
Aft Cabin	yes
Convertible berth	3
Galley	Yes
Countertop	corian
Sink	stainless steel double
Cooker	3 burner Propangas
Oven	In cooker
Extractor	Yes
Fridge	Yes
Hot water system	220V + engine



Water pressure system	electrical
Manual and/or foot pump	outside water
Owners cabin	v-bed forward cabin
Bed length (m)	2 mtr.
Wardrobe	hanging and shelves
Bathroom	en suite
Toilet	Jabsco
Toilet system	yes
Wash basin	Yes
Shower	Yes
Guest cabin 1	double bed aft cabin
Bed length (m)	2 mtr.
Wardrobe	hanging and drawers
Bathroom	shared
Toilet	Jabsco MK I layout
Toilet system	yes
Wash basin	Yes
Shower	Yes

MACHINERY

No of engines	1
Make	Volvo
Type	MD 22L BT
HP	50
kW	36.80
Fuel	diesel
Year installed	1998
Cruising speed (kn)	7
Consumption (l/hr)	3,5
Engine cooling system	freshwater heat exchanger
Drive	sail-drive



Saildrive seal	yes
Engine controls	yes
Gearbox	mechanical
Exhaust	watercooled
Propeller blades	3
Manual bilge pump	2x
Electric bilge pump	1x
Electrical installation	12V and 220V
Start battery	1x
Service battery	Total 480Ah 5 years old
Battery monitor	Victron approx. four years old
Battery charger/inverter	Victron Energy MultiPlus Compact 12V 1200Ah 50amp
Wind generator	Air Breeze
Shorepower	with cable

NAVIGATION

Compass	Suunto
Electric compass	B&G
Multi control display	3x B&G Hydra 2000 one at pedestal one above entrance one inside
Windset	B&G Wind Speed B&G Magnified Wind B&G Synchro
VHF	2x Shipmate RS8300 (inside and outside)
Autopilot	B&G Hydra Pilot
Wind vane steering install.	Sailomat
Radar	Furuno
GPS	Furuno GPS Navigator
Plotter	Yachtcontrol
Navtex	Nav4
AIS receiver	yes
Navigation lights	Yes
Searchlight	Yes



EQUIPMENT

Sprayhood with grab rail	yes
Cockpit table	yes
Boarding ladder	stainless steel + additional ladder for side
Deck shower	yes
Anchor	Rocna 25 kg
Anchor chain	Approx. 15 mtr. + 30 mtr. line
Anchor 2	Fortress
Windlass	electrical Lewmar

RIGGING

Rigging	sloop
Standing rigging	Rod 2017
Brand mast	Nautor
Material mast	aluminium
Spreaders	2 pair
Keel stepped mast	yes
Mainsail	2023 North Sails
Mainsail cover	Yes
Battcars	Harken system
Fully battened mainsail	yes
Cutterstay	removable with Wichard tensioner
Jib	2001 Cutterjib, de Vries
High aspect	2018 1x North Sails 1x de Vries on innerforestay
Genoa	1998 De Vries
Genoa I	2007 Light-weather Genoa De Vries
Genoa III	2001 De Vries
Code Zero	2013 North Sails
Gennaker	2017 De Vries
Spinnaker	1999 De Vries
Removable innerforestay	yes



Trysail	De Vries
Stormjib	1x heavy weather - de Vries - 2004 1x Storm - de Vries - 1998
Reefing System	slabreefing
Backstay adjuster	hydraulic Navtec
Boomvang	hydraulic Navtec
Primary sheet winch	2x Lewmar 58 ST Electric
Secondary sheet winch	2x Lewmar 58 ST
Halyard winches	4x Lewmar 48 ST
Spi-pole	aluminium 2x
Jockey-pole	aluminium
Gennaker pole	aluminium 1x



SWAN 44 MKII



SWAN 44 MKII



SWAN 44 MKII



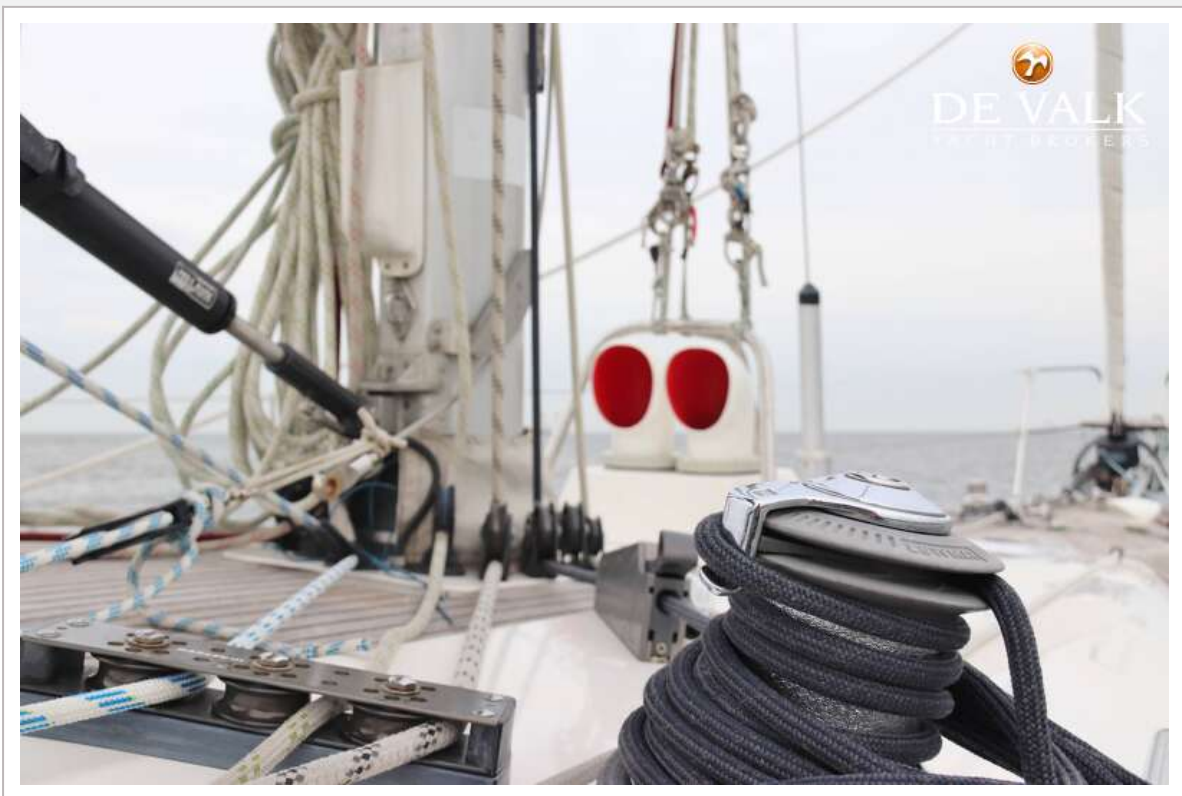
SWAN 44 MKII



SWAN 44 MKII



SWAN 44 MKII



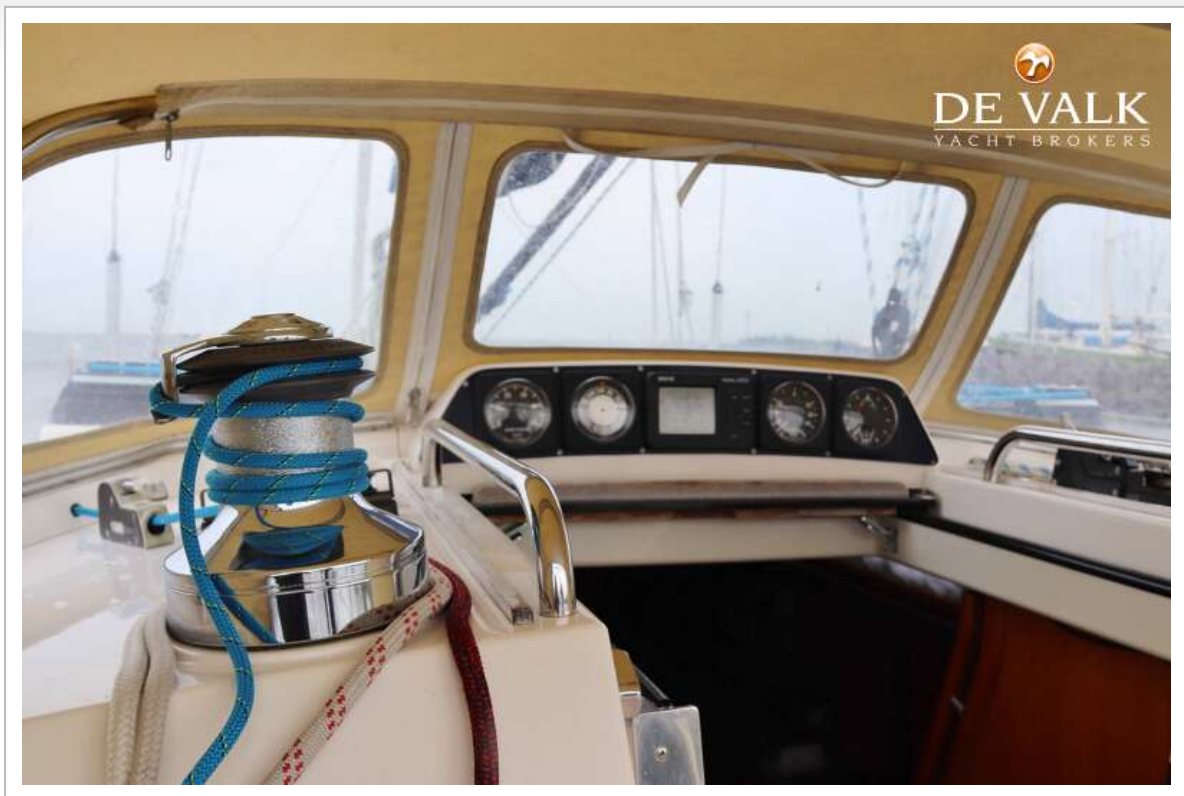
SWAN 44 MKII



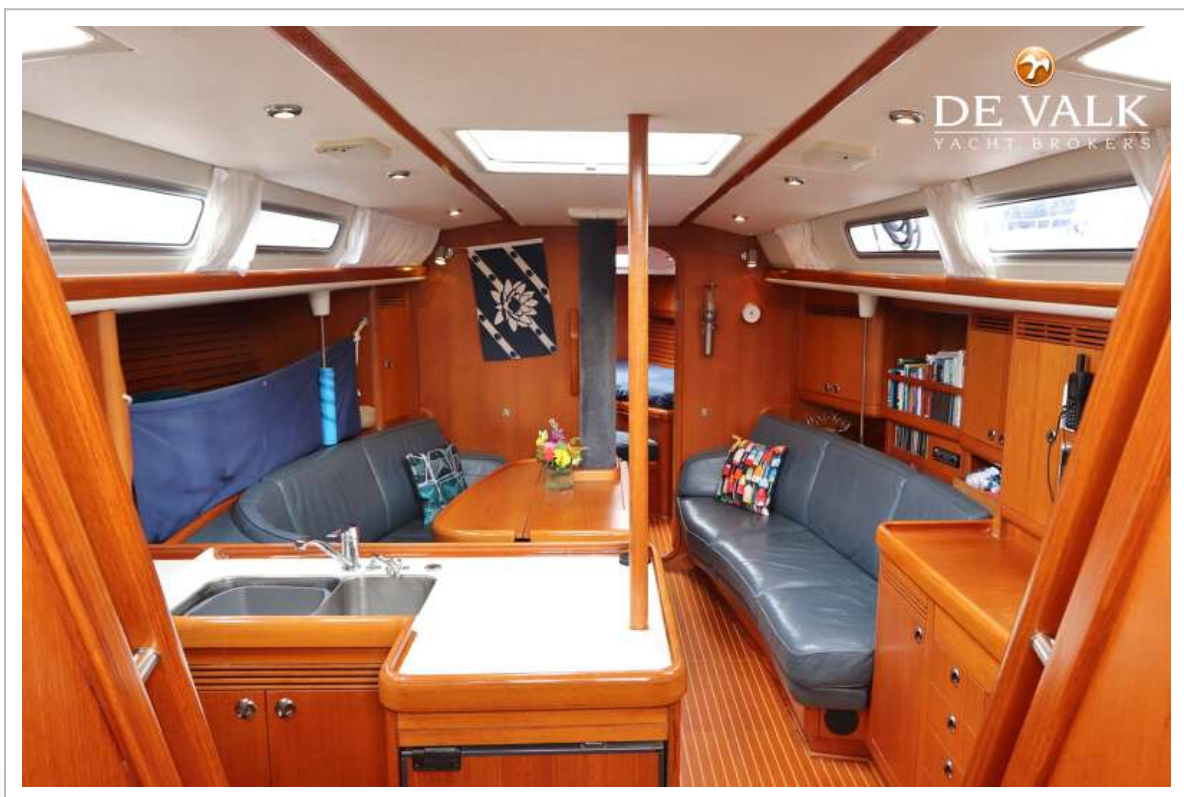
SWAN 44 MKII



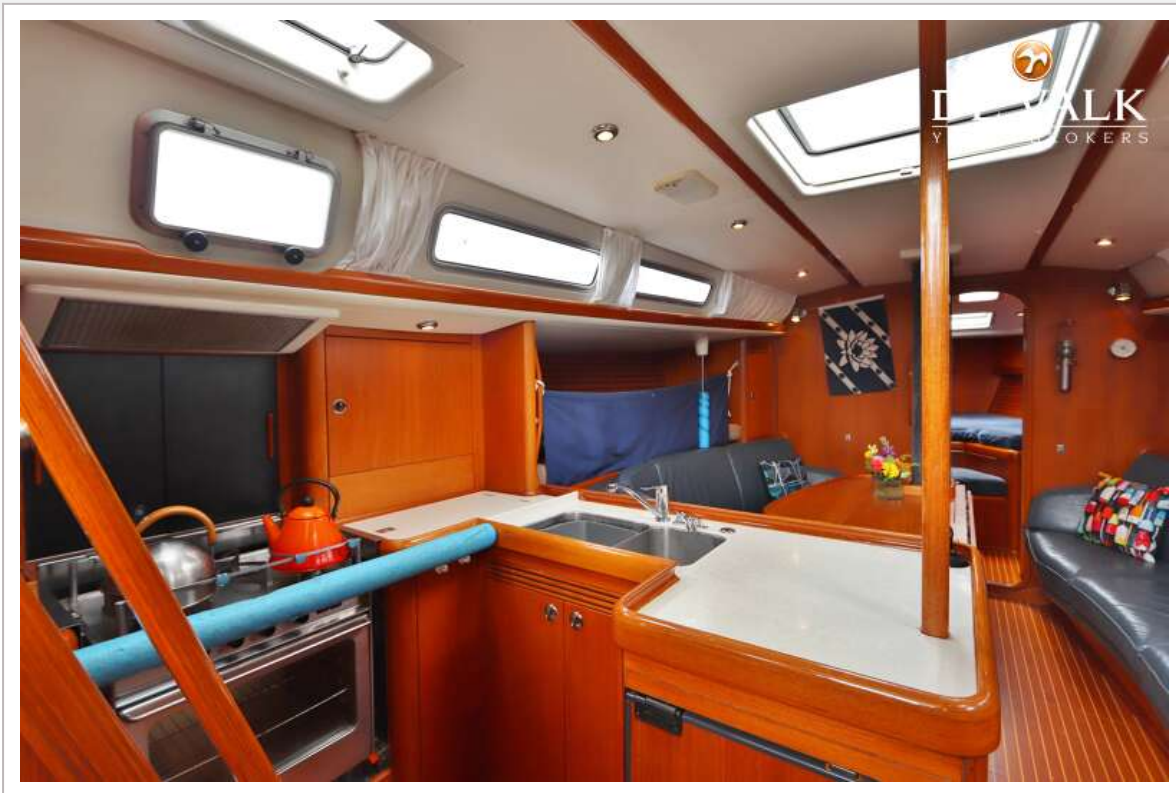
SWAN 44 MKII



SWAN 44 MKII



SWAN 44 MKII



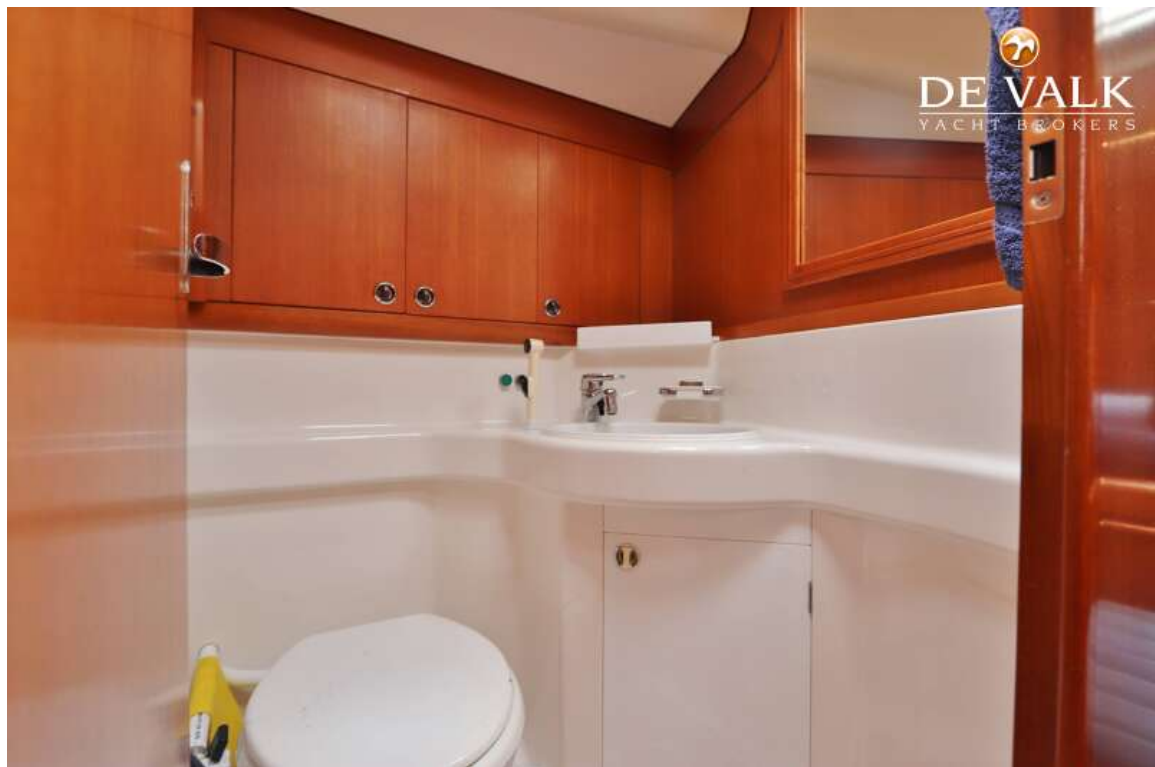
SWAN 44 MKII



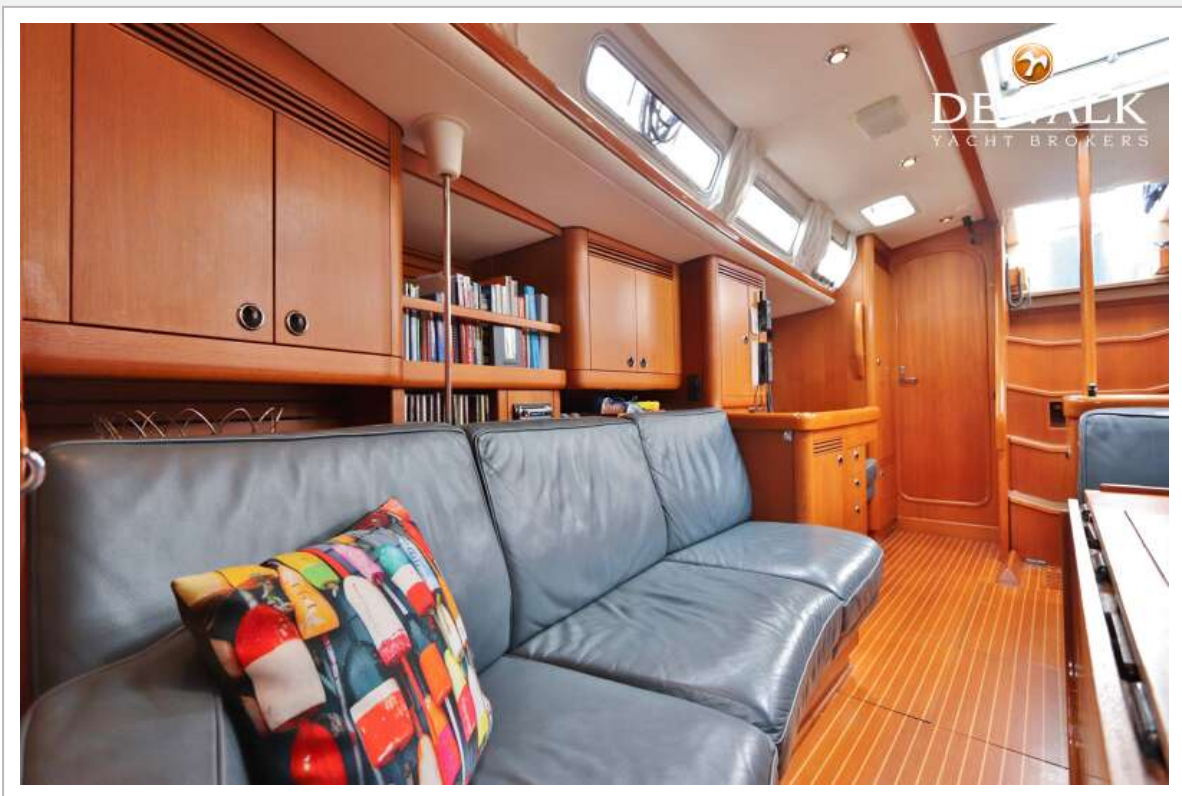
SWAN 44 MKII



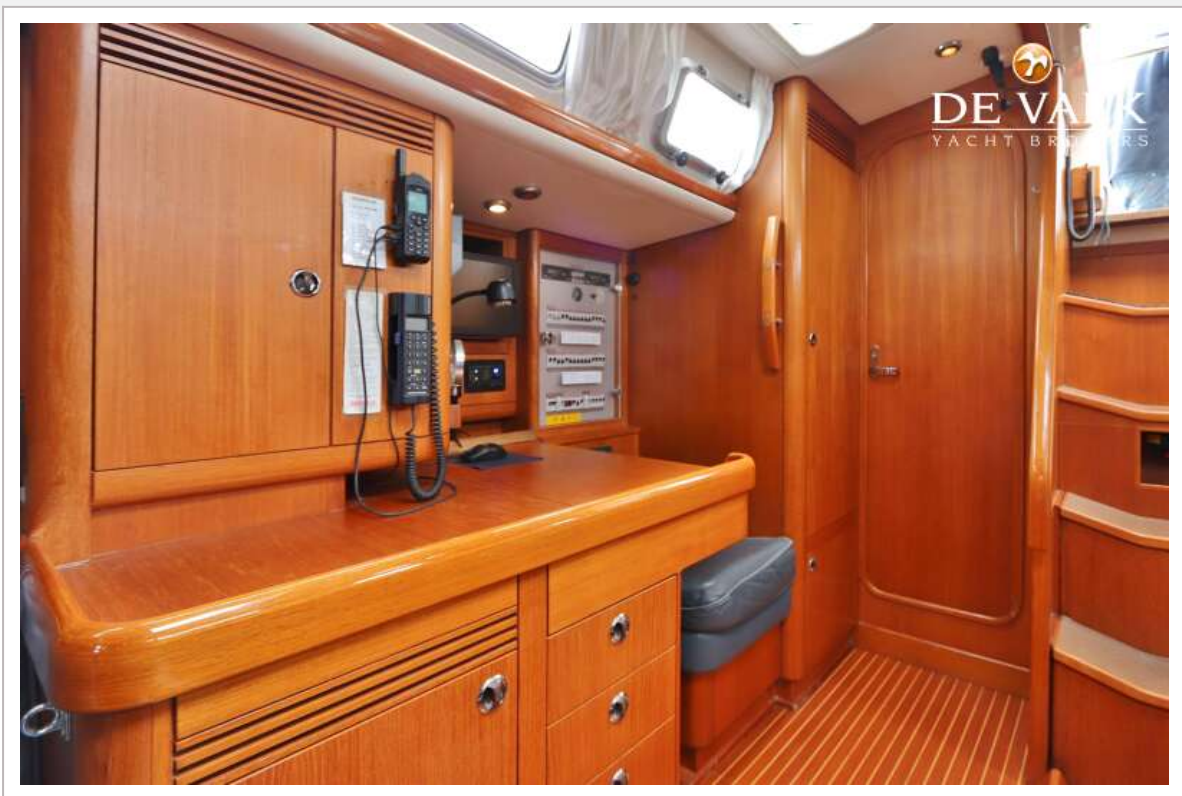
SWAN 44 MKII



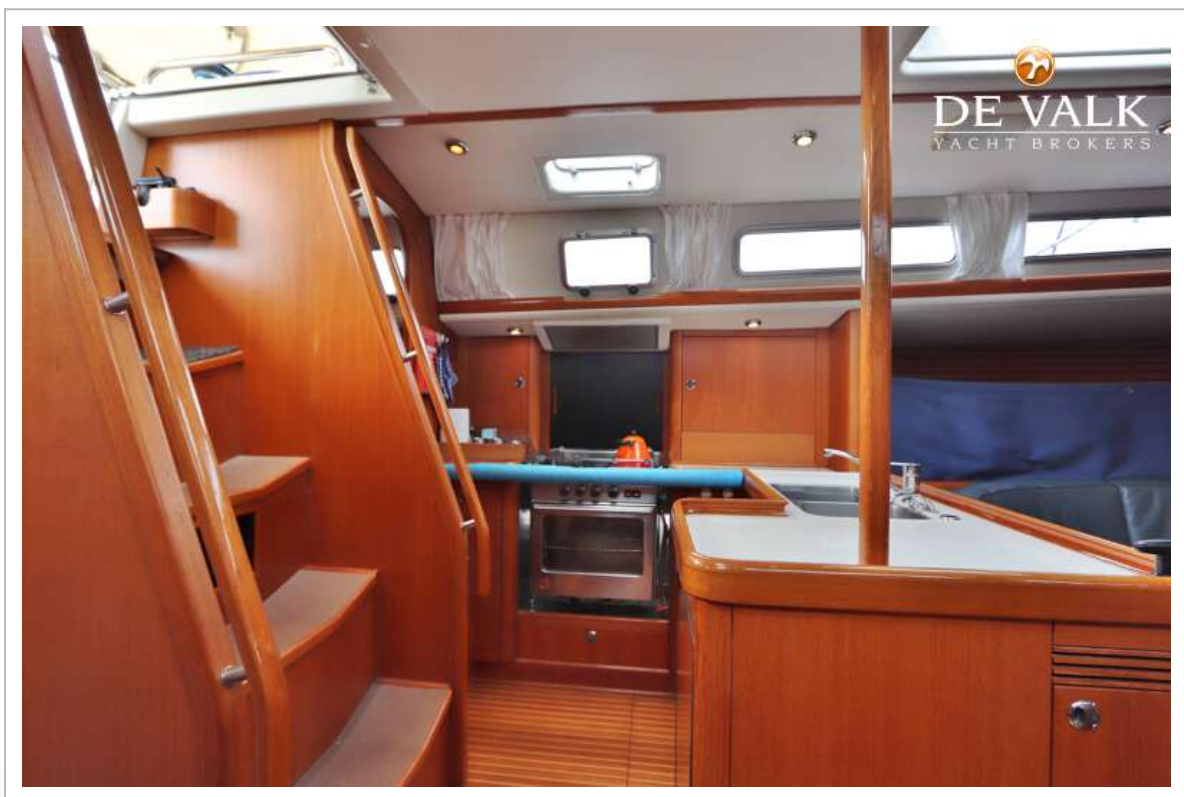
SWAN 44 MKII



SWAN 44 MKII



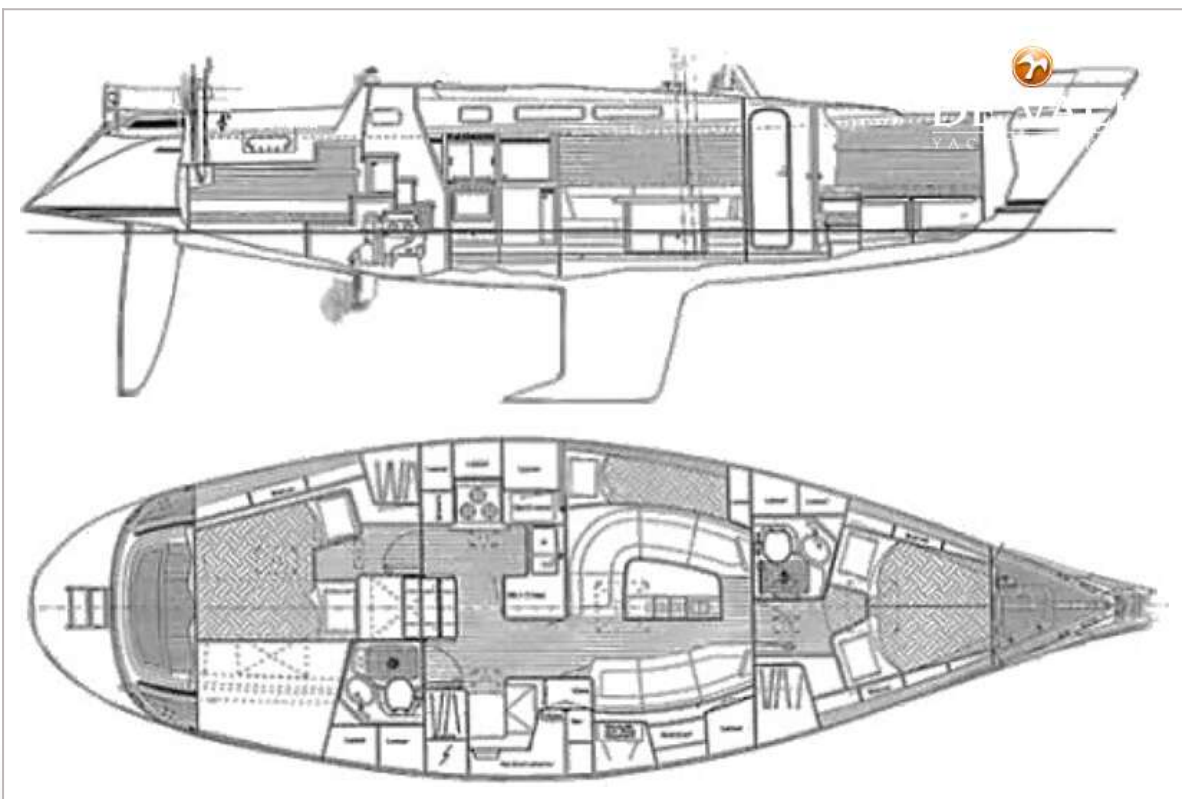
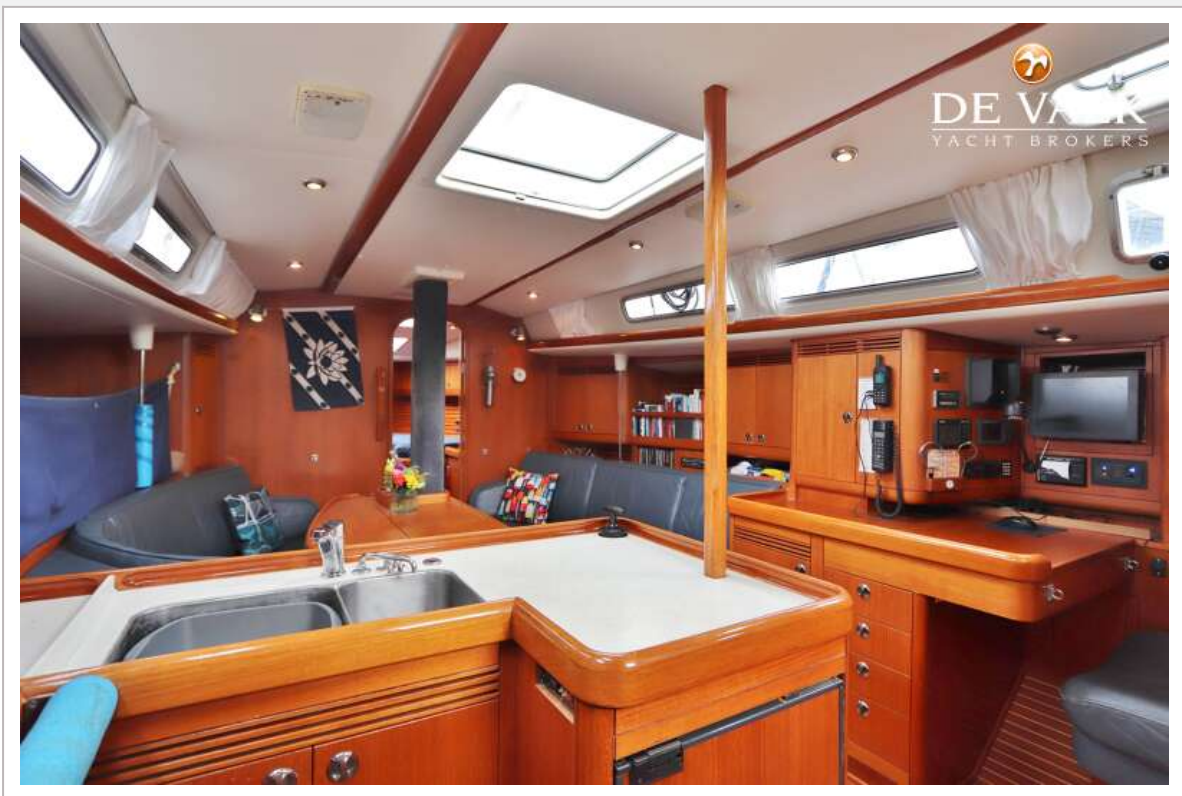
SWAN 44 MKII



SWAN 44 MKII



SWAN 44 MKII



SWAN 44 MKII

