



DE VALK
YACHT BROKERS



VENNEKENS KORAL 54



DE VALK
YACHT BROKERS

BROKER'S COMMENTS

Sturdy go anywhere yacht from the famous Vennekens yard. With her second owner since 1995, she has proven herself on many occasions to be a fast, reliable and comfortable passage maker. The twin cockpit layout offers the best for sheltered sailing as well as marina entertainment and practicality while underway. Below decks lots of storage and live onboard space for family and guests. The bigger Vennekens do not come on the market to often. More pictures to follow. Arriving in Sint Annaland shortly.

Marc Weijenberg

SPECIFICATIONS

Dimensions	16.90 x 4.60 x 2.20 (m)	Builder	Vennekens BVBA
Built	1991	Cabins	3
Material	GRP	Berths	6
Engine(s)	1 x Ford 2725E diesel	Hp/Kw	120.00 (hp), 88.00 (kw)
Asking price	sold (VAT)	Lying	at sales office

CONTACT

Sales office	De Valk Sint Annaland B.V.	Telephone	+31 (0)166 601 000
Address	Koelhuisweg 4 4697 RM Sint Annaland NL	E-mail	sintannaland@devalk.nl

DISCLAIMER

These particulars are given in good faith as supplied but cannot be guaranteed.



GENERAL

Model	VENNEKENS KORAL 54
Type	sailing yacht
LOA (m)	16,90
LWL (m)	13,10
Beam (m)	4,60
Draft (m)	2,20
Air draft (m)	25,70
Headroom (m)	2,00
Year built	1991
Builder	Vennekens BVBA
Country	Belgium
Designer	Vennekens
Displacement (t)	18
Ballast (tonnes)	lead in steel 6
CE norm	NA
Hull material	GRP
Hull colour	white
Hull shape	round-bilged
Keel type	fin keel
Superstructure material	composite
Rubbing strake	Teak + ss.strip
Deck material	composite
Deck finish	teak
Cockpit deck finish	teak
Antifouling (year)	2018
Window frame	aluminium
Window material	tempered glass
Deckhatch	7 x
Portholes	aluminium
Fuel tank (litre)	GRP 2 x 375



Freshwater tank (litre)	stainless steel 2 x 500
Wheel steering	hydraulic
Outside helm position	mechanical Whitlock
Emergency tiller	yes
Extra info	Portholes with storm-shutters
Extra info	Hull in sandwich-Airex construction

ACCOMMODATION

Cabins	3
Berths	6
Interior	mahogany
Floor	teak and holly
Saloon	yes
Heating	diesel ducted hot air Eberspaecher (defect)
Chart table	yes
Aft Cabin	yes
Dinette	Large U-shaped
Galley	yes
Countertop	plastic
Sink	stainless steel 2 x
Cooker	calor gas Techimpex 4-burner
Oven	Techimpex
Microwave	220v Philips Combimaster
Fridge	Engel 12v
Freezer	Engel 12v
Hot water system	220V + engine
Water pressure system	electrical
Owners cabin	double bed Aft-achter-hinten
Wardrobe	drawers and shelves
Bathroom	en suite I
Toilet	en suite



Toilet system	manual
Wash basin	in the bathroom
Shower	en suite
Extra info	Vanity with mirror
Guest cabin 1	bunk bed Forward-voor-vorne
Wardrobe	hanging and shelves
Bathroom	en suite II
Toilet	en suite
Toilet system	manual
Wash basin	in the bathroom
Shower	en suite
Guest cabin 2	bunk bed Forward-voor-vorne
Wardrobe	hanging and shelves
Extra info	Spacious and cosy saloon
Extra info	Three large cabins with lots of privacy and headroom.

MACHINERY

No of engines	1
Make	Ford
Type	2725E
HP	120
kW	88,00
Fuel	diesel
Year installed	1991
Maximum speed (kn)	9,00
Cruising speed (kn)	8,00
Consumption (l/hr)	6,00
Engine hours	4300
Engine cooling system	freshwater heat exchanger
Drive	shaft
Engine controls	bowden cable



Gearbox	hydraulic Newage
Bowthruster	electric Vetus
Exhaust	watercooled
Propeller type	feathering Maxprop
Propeller blades	3
Propeller shaft material	stainless steel
Shaft lubrication	water
Manual bilge pump	yes
Electric bilge pump	yes
Electrical installation	12/24/220v
Generator	wet exhaust Vetus 4,8kW (defect)
Start battery	2 x Optima (2014)
Service battery	4 x 230ah (2017)
Battery monitor	yes
Battery charger	Victron (2014)
Diode battery combiners	yes
Shorepower	with cable

NAVIGATION

Electric compass	Autohelm ST50
Depth sounder	Autohelm ST50
Log	Autohelm ST50
Windset	Autohelm ST50 (defect)
VHF handheld	yes
Autopilot	Autohelm ST7000
Radar	Koden MD3030
GPS	Navstar XR4

EQUIPMENT

Fixed windscreen	With sprayhood
Sun awning	yes



Cockpit cushions	yes
Cockpit table	yes
Bathing platform	yes
Boarding ladder	stainless steel
Gangway	Stainless folding
Deck shower	yes
Anchor	CQR Plough
Anchor chain	70 mtr
Windlass	electrical Lofrans
Capstan	Lofrans
Davits	
Davits controls	manual
Sea railing	wire
Railing side opening gates	2 x
Pushpit	yes
Pulpit	yes
Lifebuoy	yes
Wiper	2 x
Horn	electric
Radar reflector	yes
Fenders	yes
Mooring lines	yes
Spare parts	yes
Clock - barometer	Not included
Fire extinguisher	2 x no recent service
Extra info	Spare sheets, lines, parts

RIGGING

Rigging	cutter
Standing rigging	wire
Brand mast	Proctor



Material mast	aluminium coated
Spreaders	2 x set
Keel stepped mast	yes
Mainsail	Furling Vd Sneppen (1991)
Stoway mast	yes
Cutterstay	yes
Genoa	Vd Sneppen (1991)
Genoa furler	yes
Spinnaker	180m2 Vd Sneppen (1991)
Staysail	Vd Sneppen (1991)
Reefing System	main in-mast furling
Backstay adjuster	hydraulic Navtec
Boomvang	mechanical Proctor
Primary sheet winch	2 x Bariant 36CST
Secondary sheet winch	2 x Bariant 22CST
Halyard winches	2 x Bariant 27CST
Multifunctional winches	1 x Bariant 24CST
Spi-pole	aluminium



VENNEKENS KORAL 54



VENNEKENS KORAL 54



VENNEKENS KORAL 54



VENNEKENS KORAL 54



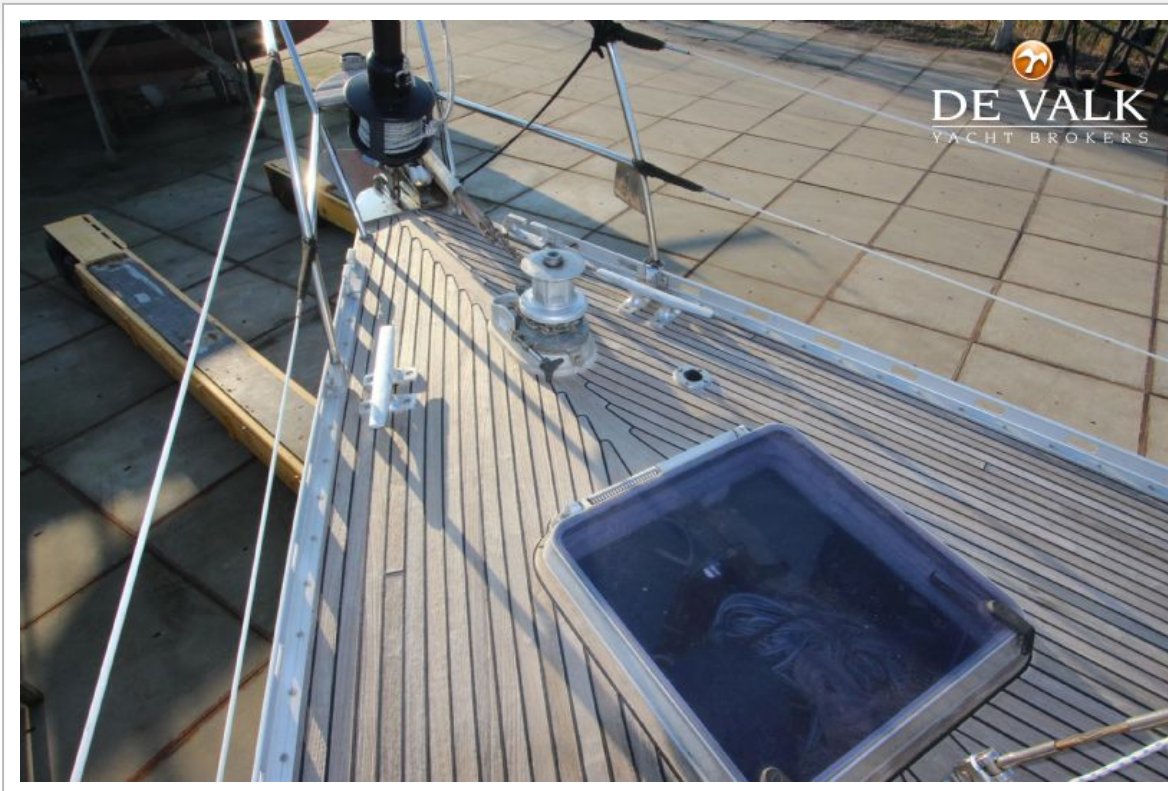
VENNEKENS KORAL 54



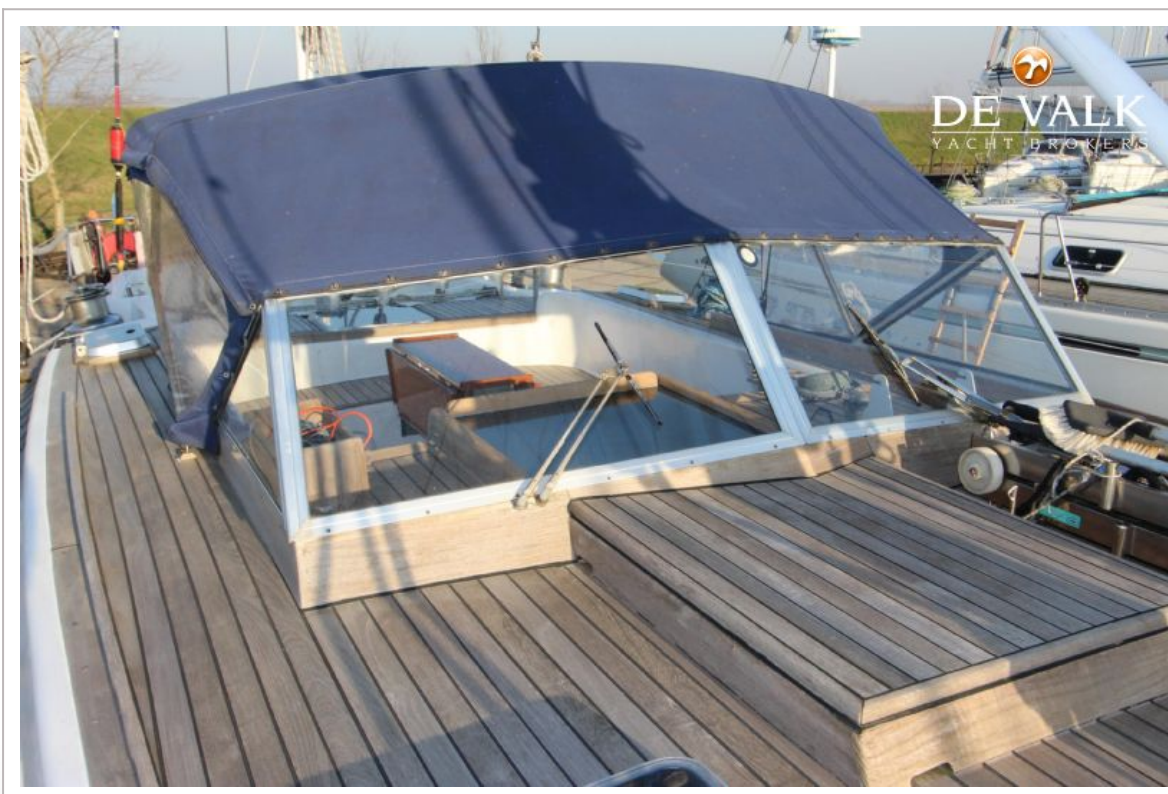
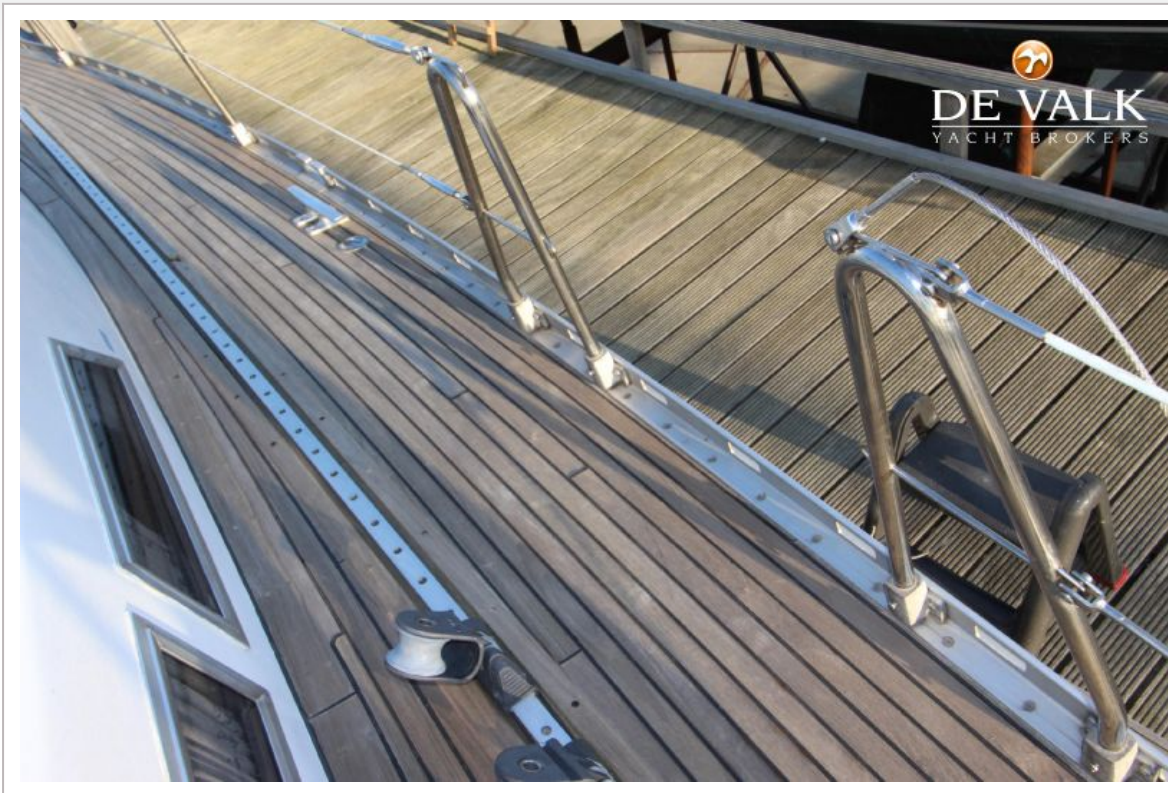
VENNEKENS KORAL 54



VENNEKENS KORAL 54



VENNEKENS KORAL 54



VENNEKENS KORAL 54



VENNEKENS KORAL 54



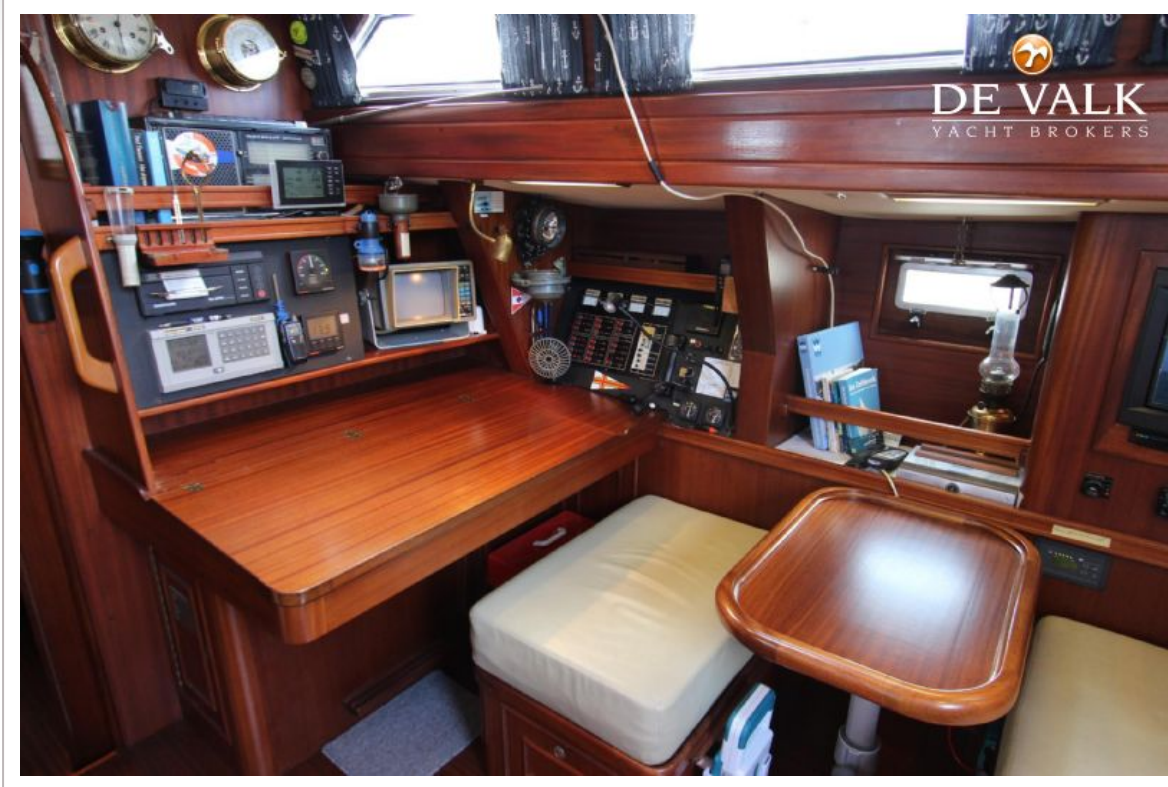
VENNEKENS KORAL 54



VENNEKENS KORAL 54



VENNEKENS KORAL 54

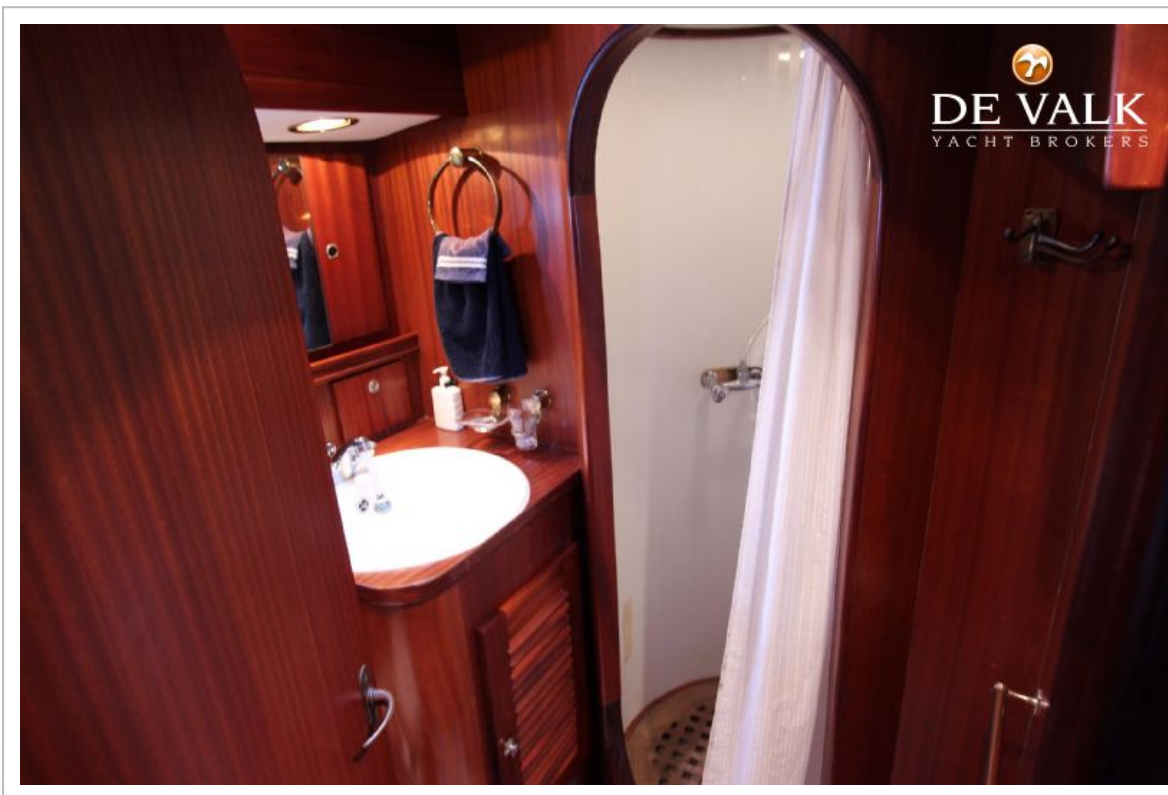
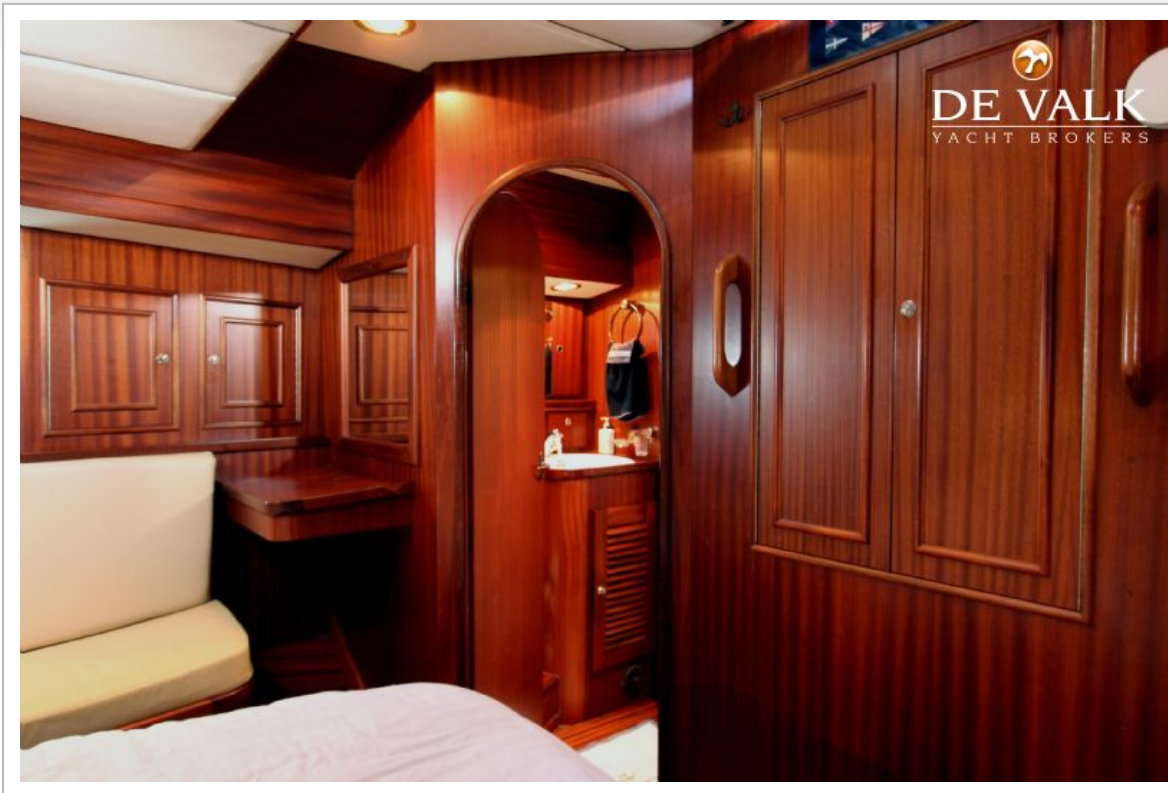


VENNEKENS KORAL 54

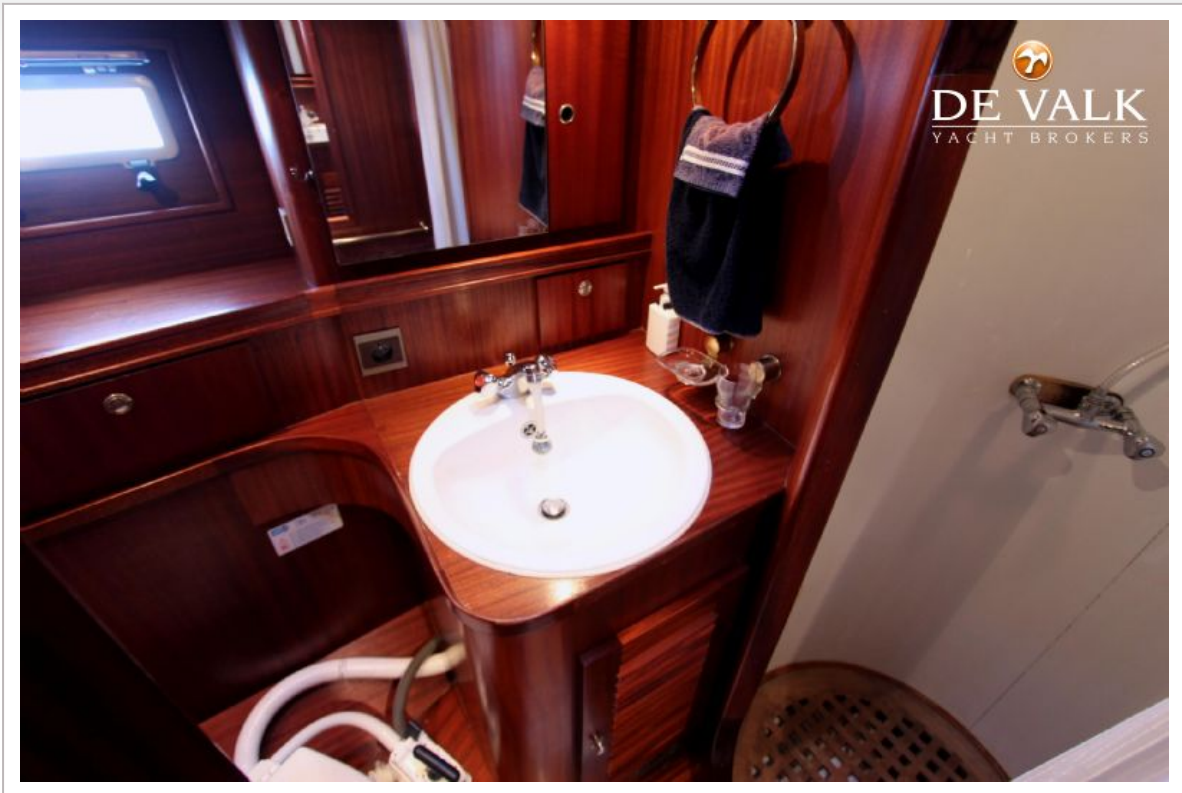


VENNEKENS KORAL 54

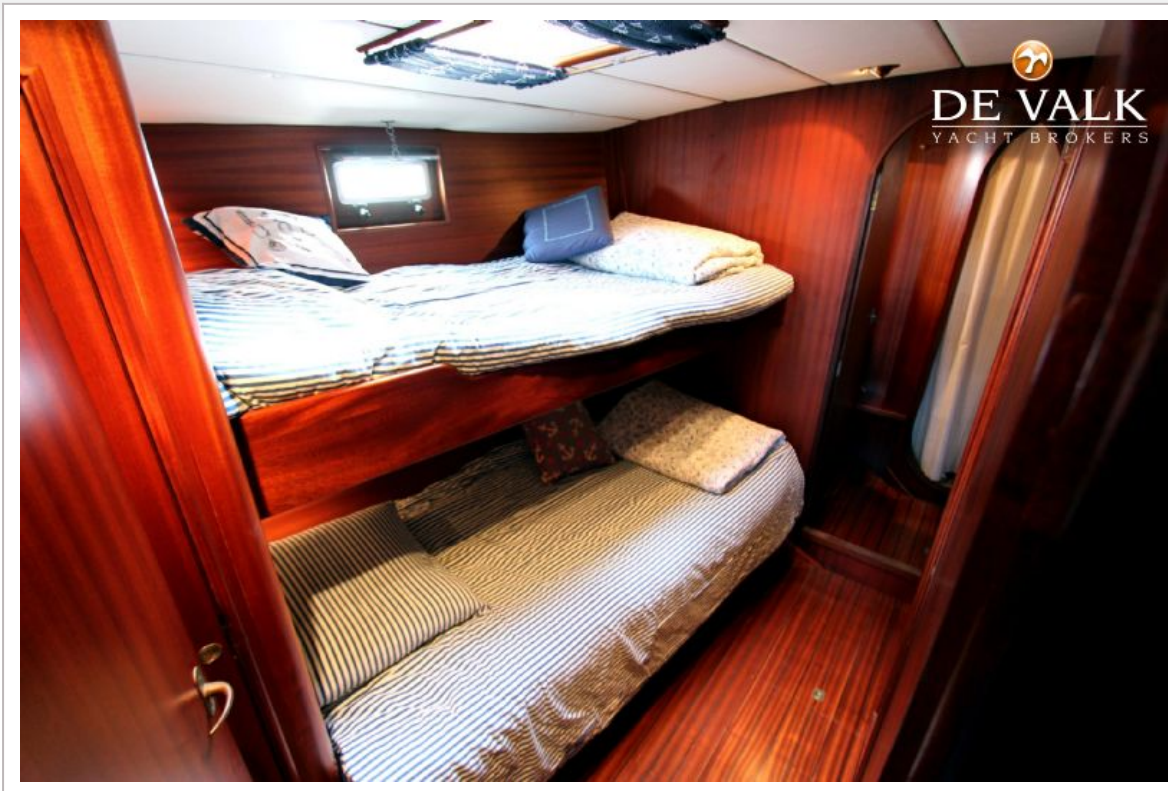




VENNEKENS KORAL 54



VENNEKENS KORAL 54





DE VALK
YACHT BROKERS

