



DE VALK  
YACHT BROKERS



## NAUTICAT 43



DE VALK  
YACHT BROKERS

# NAUTICAT 43

## BROKER'S COMMENTS

The Nauticat 43 is an elegant Sparkman & Stephens designed ketch for the cruising sailor who likes good sailing performance. Probably one of the best models of the famous Nauticat range. Loaded with extras like generator and bow thruster. Very good accommodations, sauna, deck saloon and sumptuous owners cabin with separate shower. Lots of stowage space and long range capability.

*Reinier van der Wolf*

## SPECIFICATIONS

<b>Dimensions</b>	13.00 x 4.20 x 1.90 (m)	<b>Builder</b>	Siltala Yachts OY
<b>Built</b>	1990	<b>Cabins</b>	2
<b>Material</b>	GRP	<b>Berths</b>	5
<b>Engine(s)</b>	1 x Ford Lehman SP901 diesel	<b>Hp/Kw</b>	90.00 (hp), 66.15 (kw)
<b>Asking price</b>	sold (VAT )	<b>Lying</b>	at sales office

## CONTACT

<b>Sales office</b>	De Valk Monnickendam B.V.	<b>Telephone</b>	+31 (0)299 65 63 50
<b>Address</b>	Hoogedijk 6 1145 PM Katwoude NL	<b>E-mail</b>	monnickendam@devalk.nl

## DISCLAIMER

These particulars are given in good faith as supplied but cannot be guaranteed.



## GENERAL

Model	NAUTICAT 43
Type	sailing yacht Sail Yacht
LOA (m)	13,00
LWL (m)	10,00
Beam (m)	4,20
Draft (m)	1,90
Air draft (m)	19,00
Headroom (m)	2,00
Year built	1990
Builder	Siltala Yachts OY
Country	Finland
Designer	Sparkman & Stephens
Displacement (t)	16
Ballast (tonnes)	5,5
CE norm	A
Hull material	GRP
Hull colour	White
Hull shape	Roundbilged
Keel type	Fin keel
Superstructure material	GRP
Deck finish	Teak
Superstructure deck finish	Teak
Cockpit deck finish	Teak
Dorades	4x
Window frame	Aluminum
Window material	Toughened glass
Fuel tank (litre)	1.000 L. in 2 tanks
Level indicator (fuel tank)	VDO
Freshwater tank (litre)	700 L. in 2 tanks
Level indicator (freshwater)	VDO



Greywater tank (litre)	yes
Level indicator (greywater)	yes
Wheel steering	Hydraulic
Outside helm position	Hydraulic
Emergency tiller	yes
Extra info	Teak deck needs some attention.

## ACCOMMODATION

Cabins	2
Berths	4 (+1 on dinette) 5
Interior	Teak
Deck saloon	U-shaped settee
Headroom saloon (m)	2,00
Heating	Diesel ducted hot air Eberspacher D4L
Heating 2	Electric 220v Nobo
Chart table	yes
Dinette	yes
Galley	U-shaped
Sink	2x
Cooker	Calor gas Mobilife Marine
Oven	yes
Microwave	Whirepool
Fridge	yes
Hot water system	Quick Nautique boiler 41
Water pressure system	Electrical
Dishwasher	Electro Helios
Owners cabin	French bed
Bathroom	yes
Toilet	
Shower	yes
Guest cabin 1	Bunk bed



Bathroom	yes
Toilet	yes
Wash basin	yes
Shower	yes
Sauna	yes
Extra info	Forward Sauna and an extensive bathroom (2003/2004), the original timber for the V-berth is still available. Extra Engel fridge with small freeze compartment in the saloon.

## MACHINERY

No of engines	1
Make	Ford Lehman
Type	SP901
HP	90,00
kW	66,15
Fuel	diesel
Year installed	1990
Maximum speed (kn)	8
Cruising speed (kn)	7.00
Consumption (l/hr)	4.50
Engine hours	2106
Engine cooling system	Freshwater heatexchanger
Drive	shaft
Gearbox	Hydraulic
Bowthruster	Electric Sleipner 4,3 kW
Propeller type	Fixed
Propeller blades	3
Propeller shaft material	Stainless steel
Manual bilge pump	yes
Electric bilge pump	yes
Electrical installation	12V/220V
Generator	Westerbeke 5 kW



Running hours generator	105
Start battery	1x
Service battery	2x
Battery charger	TVA 12/40
Shorepower	yes
Extra info	For engine: VDO gauges: Volt, Ampere, temperature and oil-pressure. For generator: VDO gauges for temperature, oil pressure and volt.

## NAVIGATION

Electric compass	Suunto D110
Log	VDO Sumlog SL
Windset	yes
VHF	Shipmate RS8110 (no Atis) + speaker outside.
Autopilot	Raymarine ST7001+ (2004)
Radar	Raytheon RS41XX Raster Scan radar
GPS	yes
Extra info	Inside: VDO wind set: wind direction and speed. Autohelm Multi: depth/log/heading and wind. Philips AP Navigator MK10 DGPS Professional. Compaq lap top. Outside: Suunto compass on pedestal. VDO windset: speed, direction and close hauled. Autohelm: speed. Autohelm GPS. Autohelm depth.

## EQUIPMENT

Sprayhood	yes
Boarding ladder	yes
Anchor	yes
Anchor chain	yes
Anchor 2	yes
Windlass	Electrical Lofrans
Deck wash	yes
Dinghy	Inflatable Zodiac 220R



Outboard	Tohatsu 3 hp
Davits	2x S/S
Sea railing	Stainless steel Teak +
Life raft	yes
Life raft (pers)	6
Last life raft survey	must be inspected
Lifejackets	yes
Wiper	yes
Window ventilator	yes
Spare parts	yes
Tools	yes
TV	Philips Flat TV
Radio-cd player	Pioneer MP3-CD player
Cockpit speakers	Blaupunkt
Clock - barometer	yes
Fire extinguisher	must be checked
Extra info	Isotherm safe, spray sails.

## RIGGING

Rigging	Ketch
Brand mast	Seldén
Material mast	Aluminum
Spreaders	2x 2
Mainsail	yes
Mainsail cover	yes
Mizzen	yes
Mizzen sailcover	yes
Genoa	yes
Genoa furler	Furlex
Stormjib	yes
Boomvang	Selden



**Secondary sheet winch**

1x Lewmar 30

**Genoa sheetwinches**

2x Lewmar 52

**Halyard winches**

2x Lewmar 24 + 2x Lewmar 30 on main mast + 1x Lewmar 8 on mizzen

**Spi-pole**

yes







# NAUTICAT 43





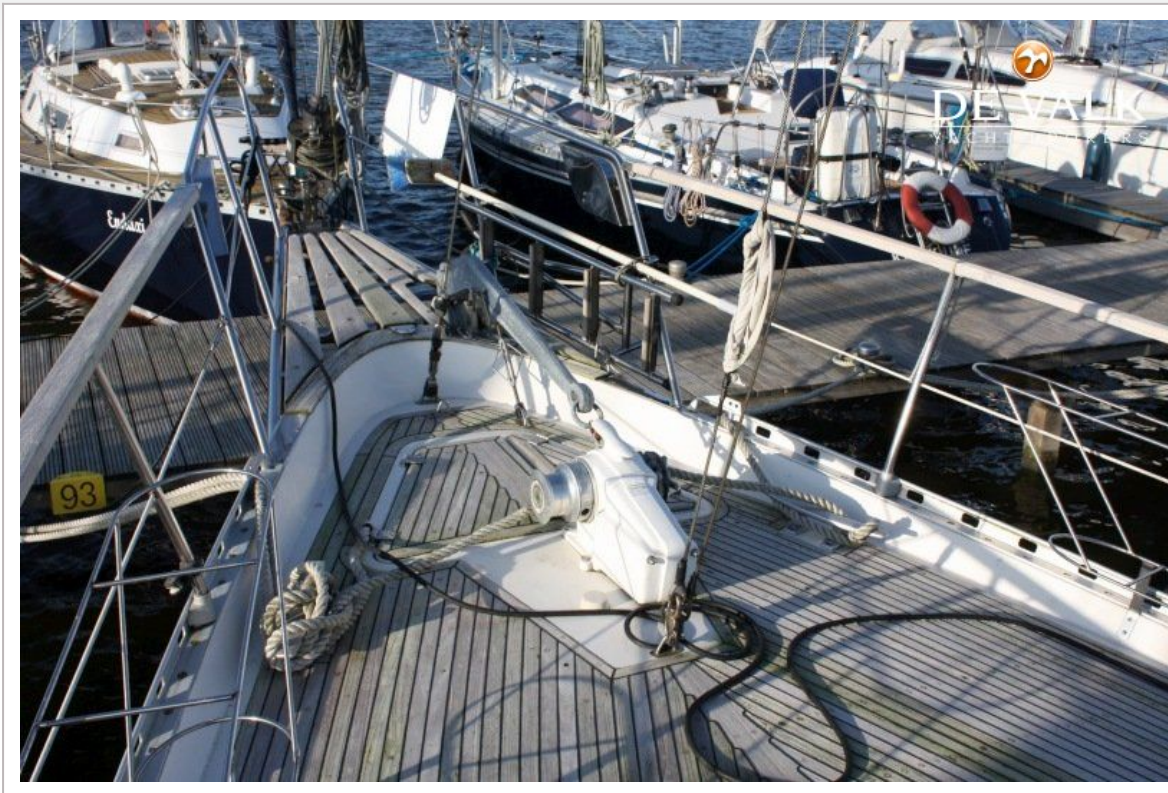




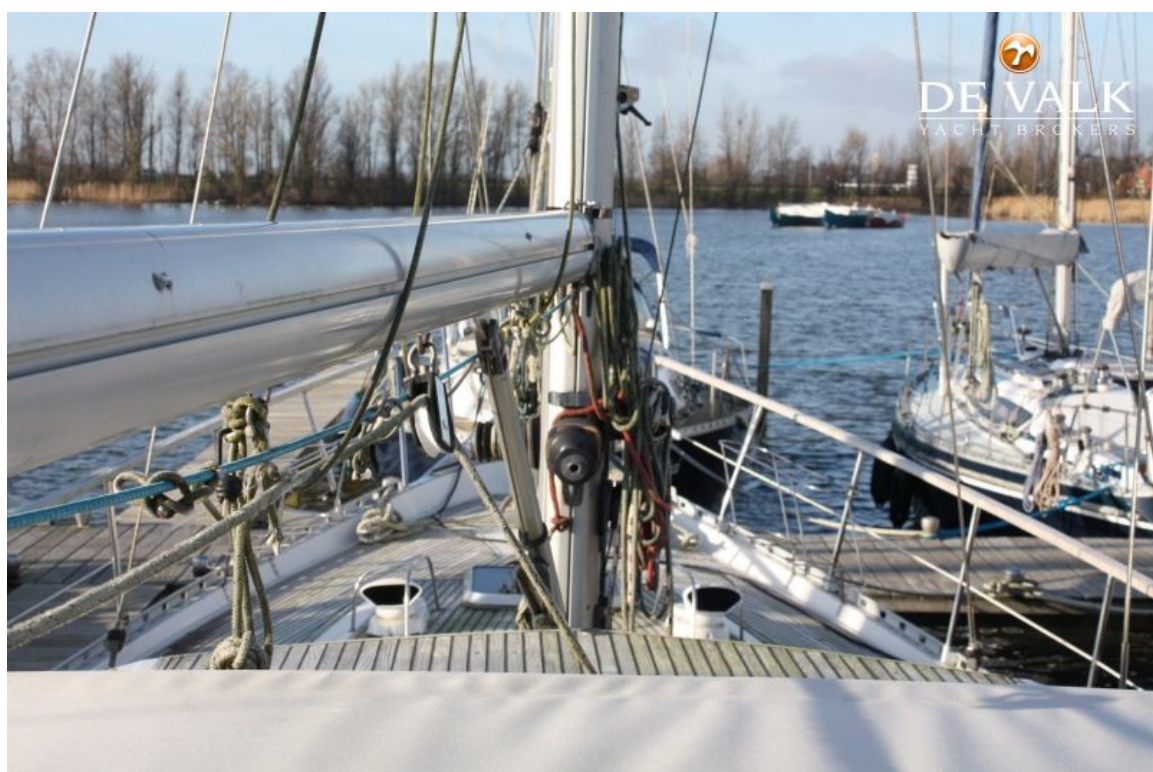




# NAUTICAT 43



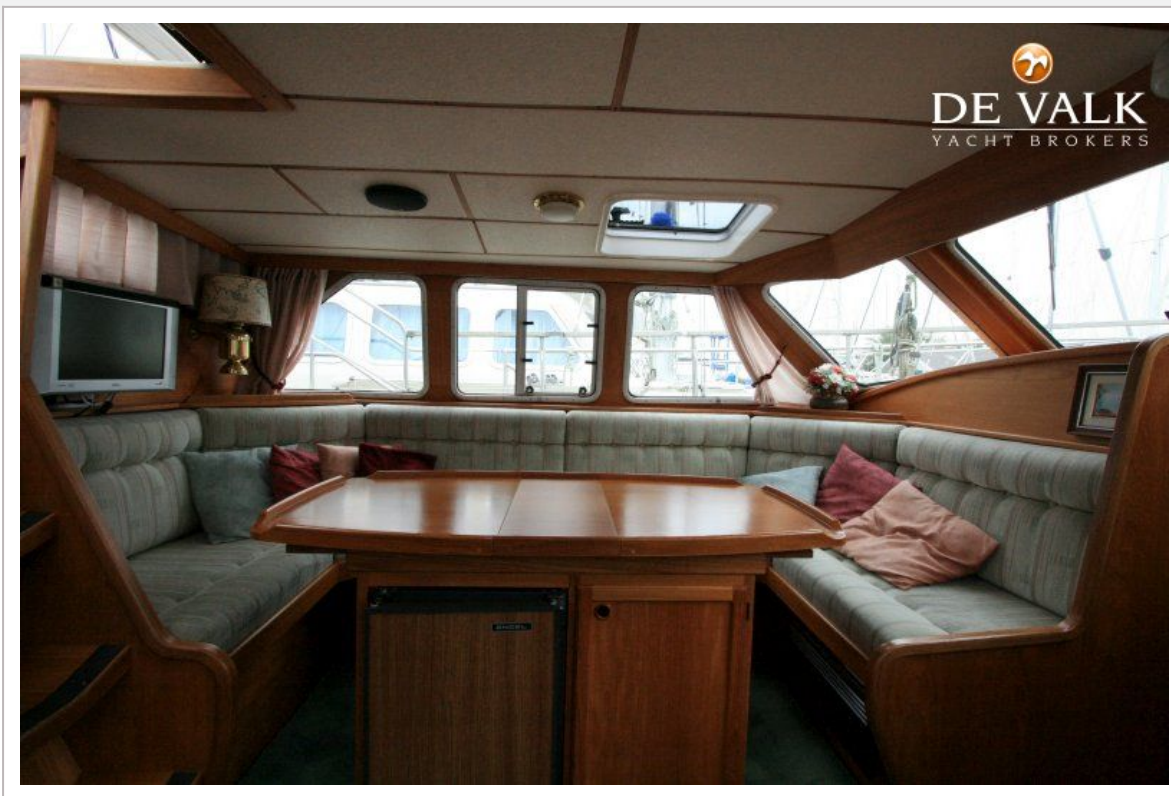








# NAUTICAT 43

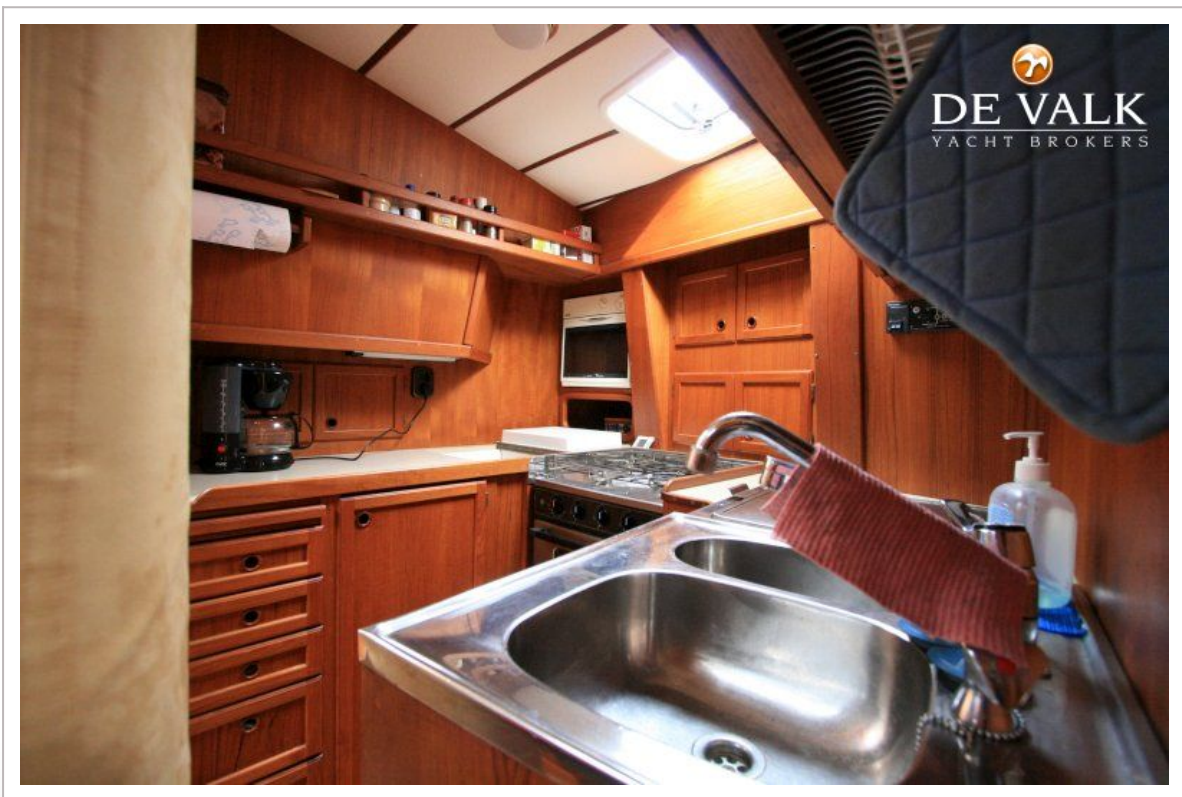
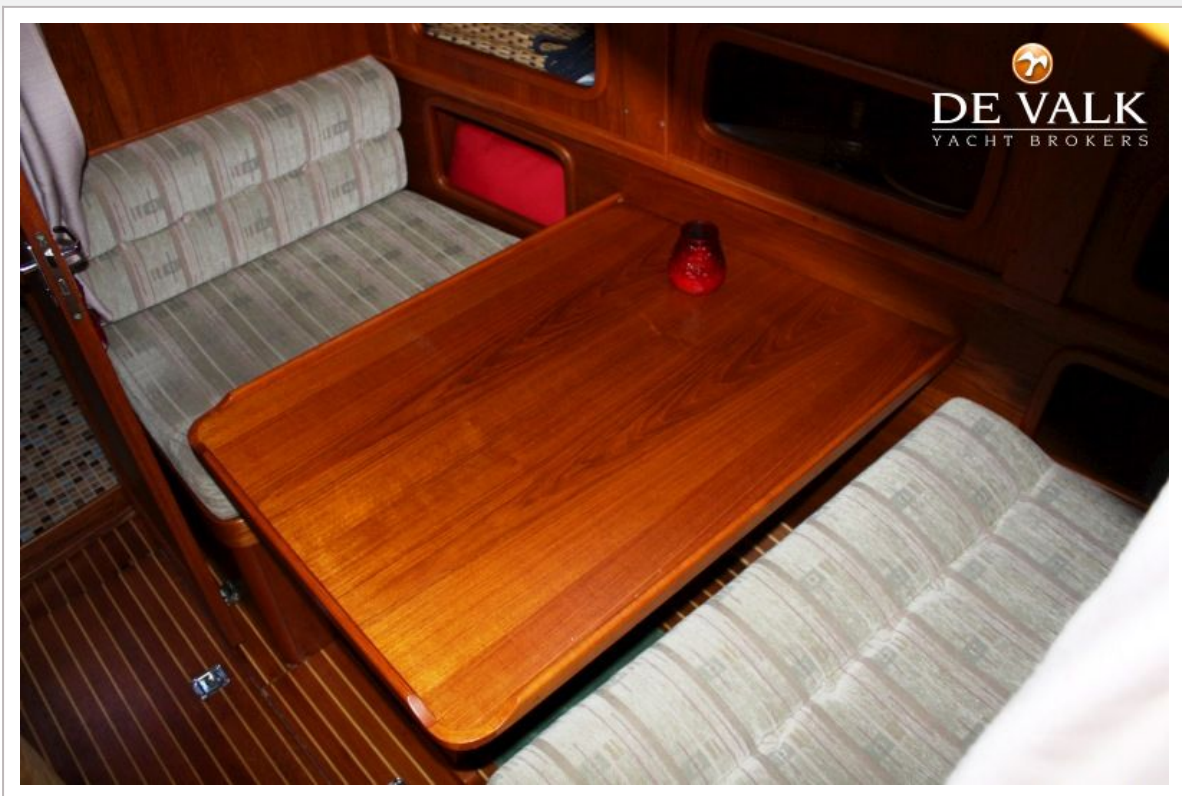




# NAUTICAT 43

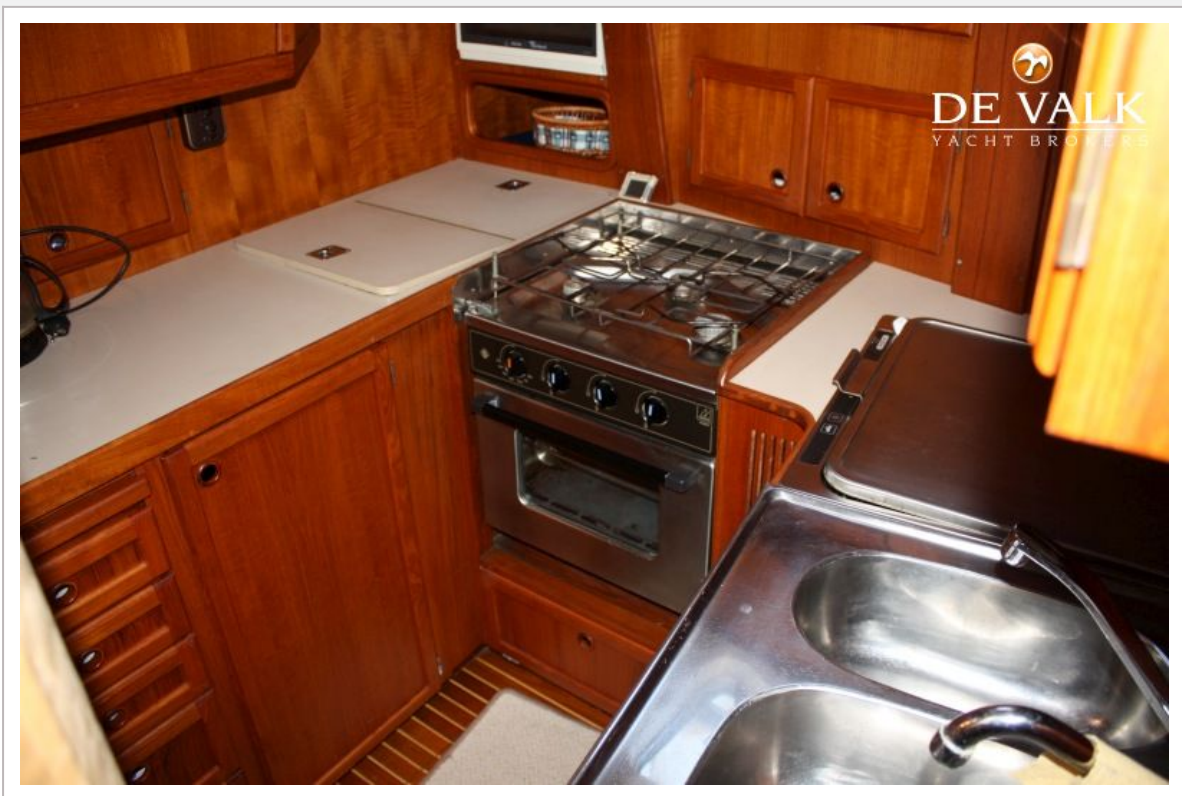


# NAUTICAT 43



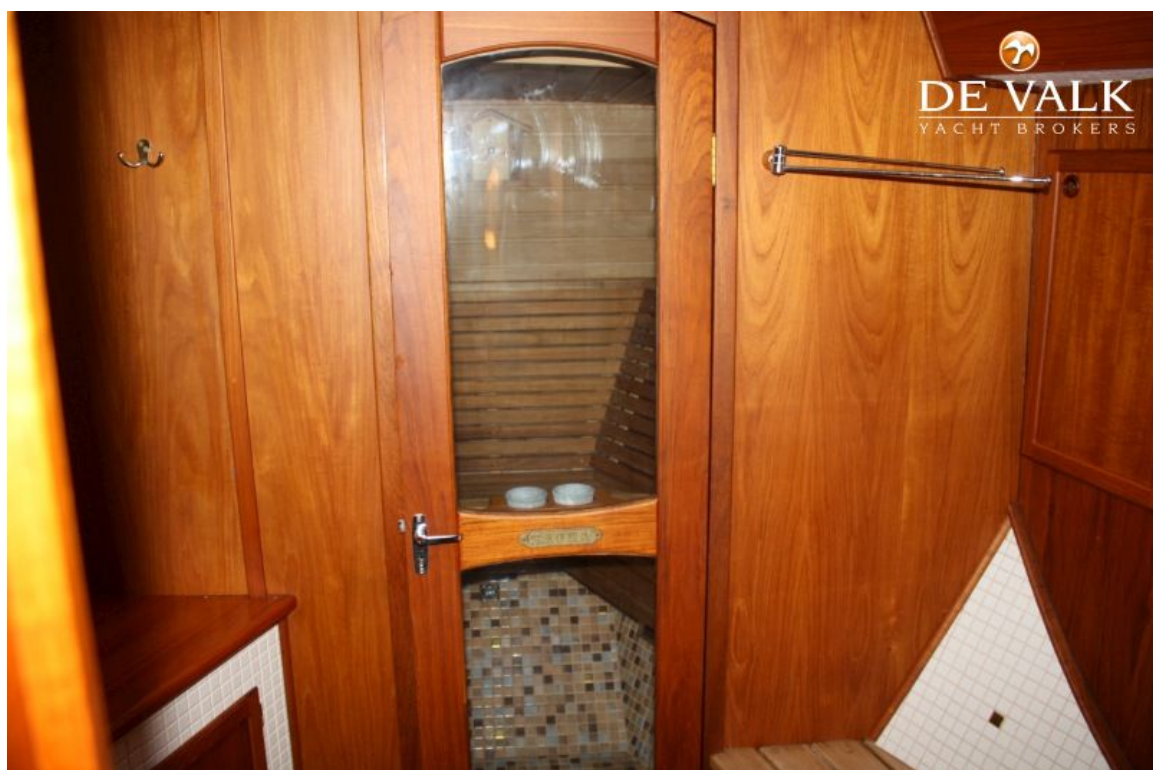


# NAUTICAT 43

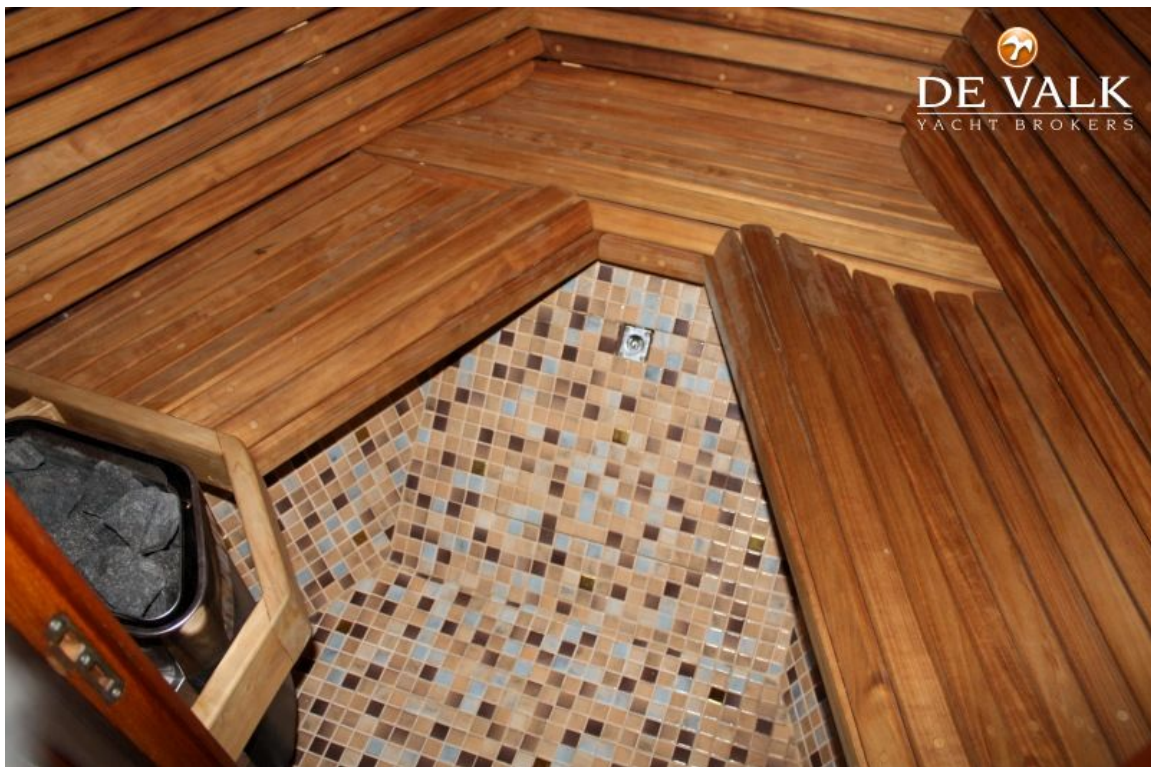








# NAUTICAT 43





# NAUTICAT 43

