



## HALLBERG RASSY 352 SCANDINAVIA



# HALLBERG RASSY 352 SCANDINAVIA

## BROKER'S COMMENTS

Introduced in 1979, the HR 352 MK II underwent various upgrades through the years. Around 1986 the skylight in the saloon was increased in size to give more light into the saloon. The locker doors of the saloon became louvered as on the larger Hallberg-Rassy sisters. When the HR 352 was presented in 1978 it was described as "A boat with future" which indeed is valid still today. Sails of 2005.

*Reinier van der Wolf*

## SPECIFICATIONS

<b>Dimensions</b>	10.54 x 3.38 x 1.67 (m)	<b>Builder</b>	Hallberg Rassy Varv AB
<b>Built</b>	1986	<b>Cabins</b>	2
<b>Material</b>	GRP	<b>Berths</b>	7
<b>Engine(s)</b>	1 x Volvo Penta MD 2003 Turbo diesel	<b>Hp/Kw</b>	43.00 (hp), 31.61 (kw)
<b>Asking price</b>	sold (VAT )	<b>Lying</b>	at sales office

## CONTACT

<b>Sales office</b>	De Valk Monnickendam B.V.	<b>Telephone</b>	+31 (0)299 65 63 50
<b>Address</b>	Hoogedijk 6 1145 PM Katwoude NL	<b>E-mail</b>	monnickendam@devalk.nl

## DISCLAIMER

These particulars are given in good faith as supplied but cannot be guaranteed.



# HALLBERG RASSY 352 SCANDINAVIA

## GENERAL

Model	HALLBERG RASSY 352 SCANDINAVIA
Type	sailing yacht
LOA (m)	10,54
LWL (m)	8,70
Beam (m)	3,38
Draft (m)	1,67
Air draft (m)	15,00
Headroom (m)	1,94
Year built	1986
Builder	Hallberg Rassy Varv AB
Country	Sweden
Designer	Christoph Rassy / Olle Enderlein
Displacement (t)	6,7
Ballast (tonnes)	cast iron 3
CE norm	Build before June 1998
Hull material	GRP
Hull colour	white
Hull shape	S-bilged
Keel type	long keel Semi
Superstructure material	GRP
Rubbing strake	yes
Deck material	GRP
Deck finish	teak
Superstructure deck finish	moulded in
Cockpit deck finish	teak
Dorades	3x
Window frame	aluminium
Window material	tempered glass
Portholes	aluminium 2x 4
Fuel tank (litre)	stainless steel 240 (150 + 90 )



# HALLBERG RASSY 352 SCANDINAVIA

Level indicator (fuel tank)	yes
Freshwater tank (litre)	GRP 300
Level indicator (freshwater)	yes
Blackwater tank (litre)	80
Wheel steering	cable steering
Emergency tiller	yes
Extra info	Teak refurbished in 2011.

## ACCOMMODATION

Cabins	2
Berths	7
Interior	mahogany
Floor	teak and holly
Saloon	with L-shaped settee with opposite a bench
Headroom saloon (m)	1,89
Heating	diesel ducted hot air Webasto Air top 3500/5000
Chart table	yes
Aft Cabin	yes
Galley	L-shaped
Countertop	wood
Sink	stainless steel 2x
Cooker	calor gas Eno
Oven	yes
Fridge	Coolmatic
Hot water system	220V + engine Boiler (40 ltrs)
Water pressure system	electrical Shurflo
Manual and/or foot pump	seawaterpump
Crockery	yes
Owners cabin	double bed + single bed
Wardrobe	hanging
Guest cabin 1	v-bed



# HALLBERG RASSY 352 SCANDINAVIA

Wardrobe	hanging and drawers
Bathroom	shared
Toilet	yes
Toilet system	manual
Wash basin	
Shower	
Extra info	Additional floor carpets

## MACHINERY

No of engines	1
Make	Volvo Penta
Type	MD 2003 Turbo
HP	43,00
kW	31,61
Fuel	diesel
Year installed	1986
Maximum speed (kn)	7
Cruising speed (kn)	5-6
Consumption (l/hr)	3
Engine hours	4170
Engine cooling system	freshwater heat exchanger
Drive	shaft
Engine controls	bowden cable Morse (2011)
Gearbox	mechanical Volvo Penta
Exhaust	watercooled
Propeller type	fixed
Propeller blades	3
Propeller shaft material	stainless steel
Shaft lubrication	water
Manual bilge pump	yes
Electrical installation	fully renewed 12V/220V



# HALLBERG RASSY 352 SCANDINAVIA

Start battery	June 2014 1x 102 AH
Service battery	June 2014 2x 100 AH semi tractie
Battery charger	renewed in 2005 Stirling
Shorepower	with cable
Extra info	Propellor Shaft renewed in 2011.

## NAVIGATION

Compass	yes
Depth sounder	Silva 3200 Digital Echolot
Log	Silva 2200 Digital log
Windset	Silva 4000
VHF	no Atis Debeg 6330
Autopilot	Autohelm 5000
Radar	Furuno 821/841
GPS	Philips Dantronic AP Navigator MK 9-D

## EQUIPMENT

Fixed windscreen	yes
Sprayhood	(2007)
Cockpit cover	yes
Cockpit cushions	6x
Cockpit table	yes
Boarding ladder	stainless steel
Anchor	CQR Plough
Anchor chain	galvanized 8 mm
Windlass	manual
Sea railing	wire
Grab rail (superstructure)	teak
Pushpit	S/S
Pulpit	S/S
Life raft	container Arimar Neptune (2003)



Life raft (pers)	4
Last life raft survey	(2006)
Lifejackets	4x (2006)
Lifebuoy	yes
Radar reflector	yes
Fenders	yes
Spare parts	yes
Radio-cd player	yes
Speakers in salon	2
Fire extinguisher	yes
Extra info	Lifeline on roller on S/S holder. Searchlight, sits on pulpit.

## RIGGING

Rigging	sloop
Standing rigging	wire
Brand mast	Seldén
Material mast	aluminium
Spreaders	1x 2
Mainsail	(2005)
Mainsail cover	Lazy Jacks + cover
Genoa I	(2005)
Genoa furler	Reckmann-Zwilling
Stormjib	(2005)
Backstay adjuster	mechanical
Boomvang	Rodkicker (2005)
Secondary sheet winch	2x Lewmar 30 ST
Genoa sheetwinches	2x Lewman 46 ST
Halyard winches	on mast 2x Lewmar 16 ST
Spi-pole	aluminium
Isolated backstay	yes



## Extra info

Lewmar mainsheet blocks of 2007. Running rigging of 2007.  
Standing rigging renewed in 2005. Backstay renewed in 2005.





# HALLBERG RASSY 352 SCANDINAVIA



# HALLBERG RASSY 352 SCANDINAVIA





# HALLBERG RASSY 352 SCANDINAVIA





# HALLBERG RASSY 352 SCANDINAVIA





# HALLBERG RASSY 352 SCANDINAVIA



# HALLBERG RASSY 352 SCANDINAVIA





# HALLBERG RASSY 352 SCANDINAVIA





# HALLBERG RASSY 352 SCANDINAVIA





# HALLBERG RASSY 352 SCANDINAVIA



# HALLBERG RASSY 352 SCANDINAVIA





# HALLBERG RASSY 352 SCANDINAVIA

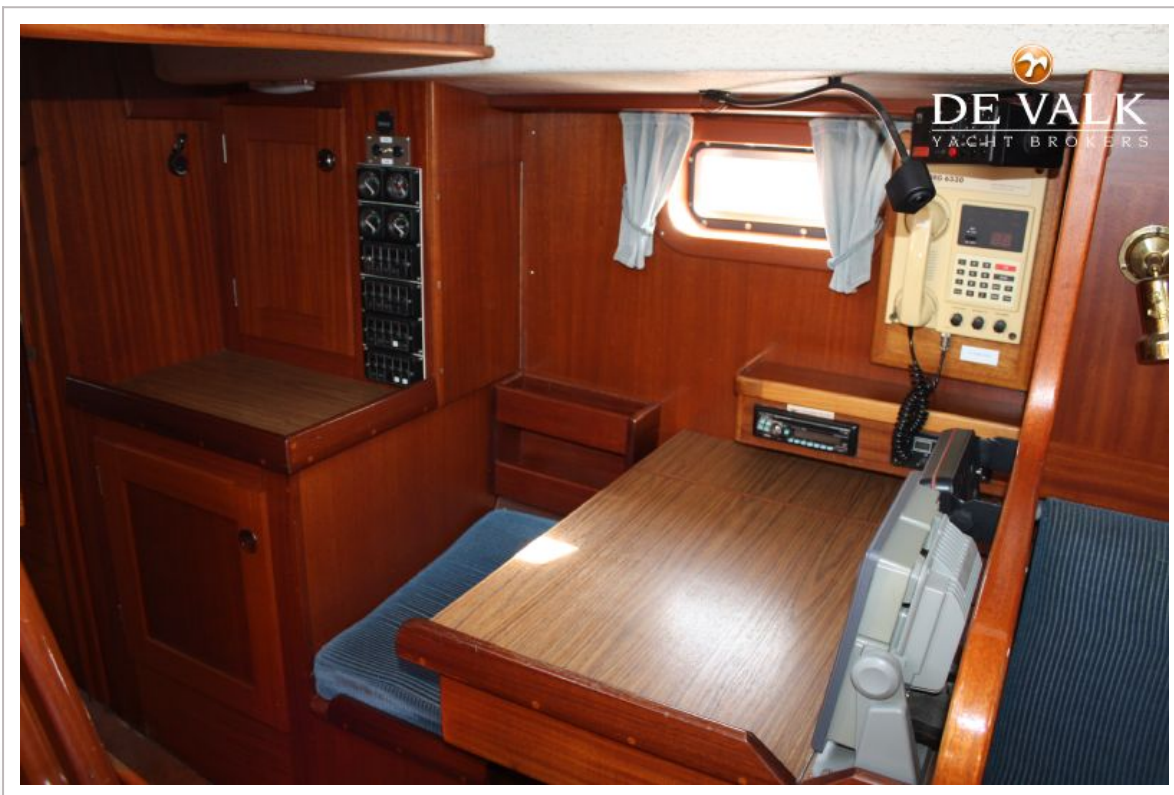


# HALLBERG RASSY 352 SCANDINAVIA

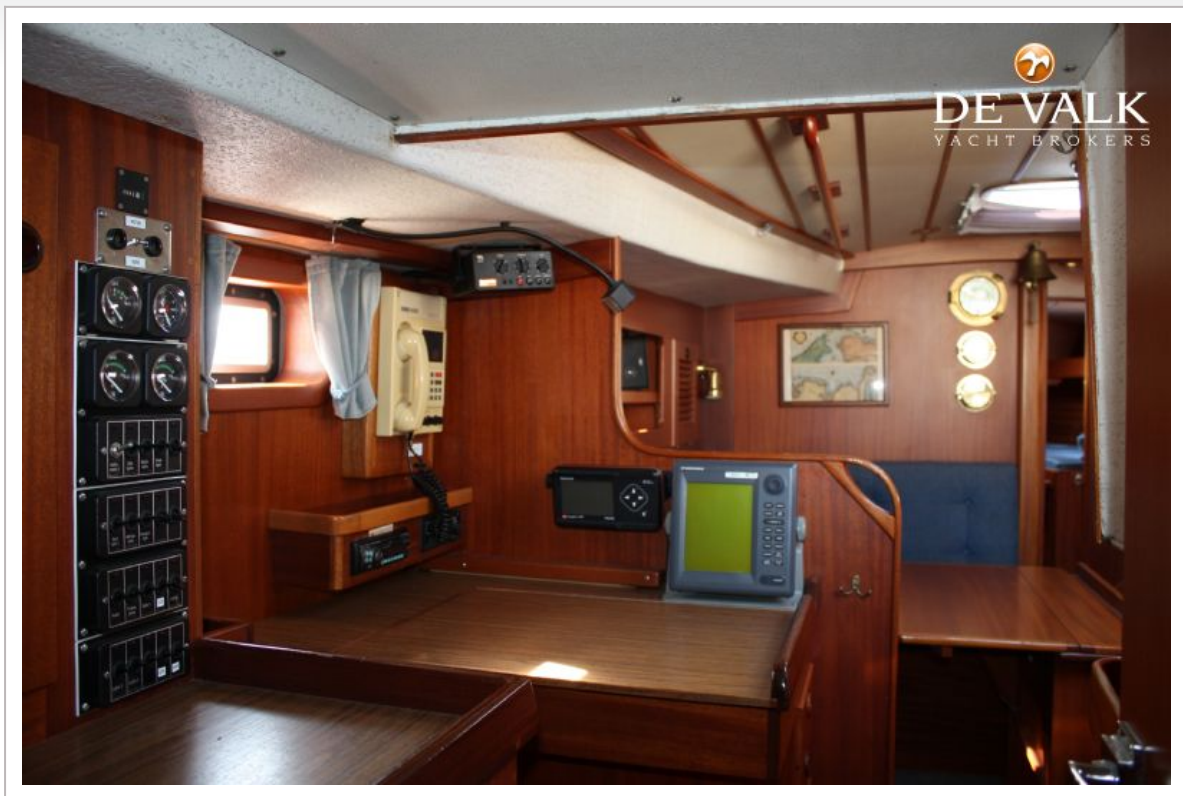




# HALLBERG RASSY 352 SCANDINAVIA



# HALLBERG RASSY 352 SCANDINAVIA

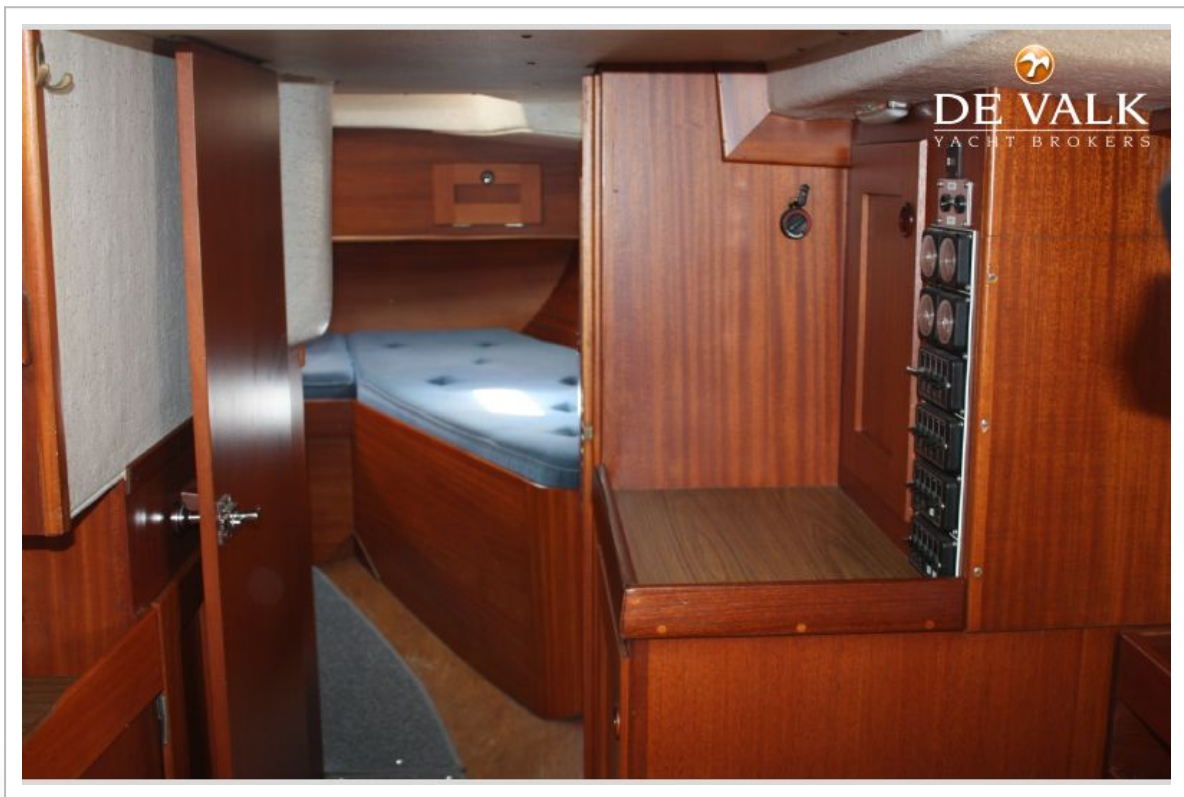




# HALLBERG RASSY 352 SCANDINAVIA

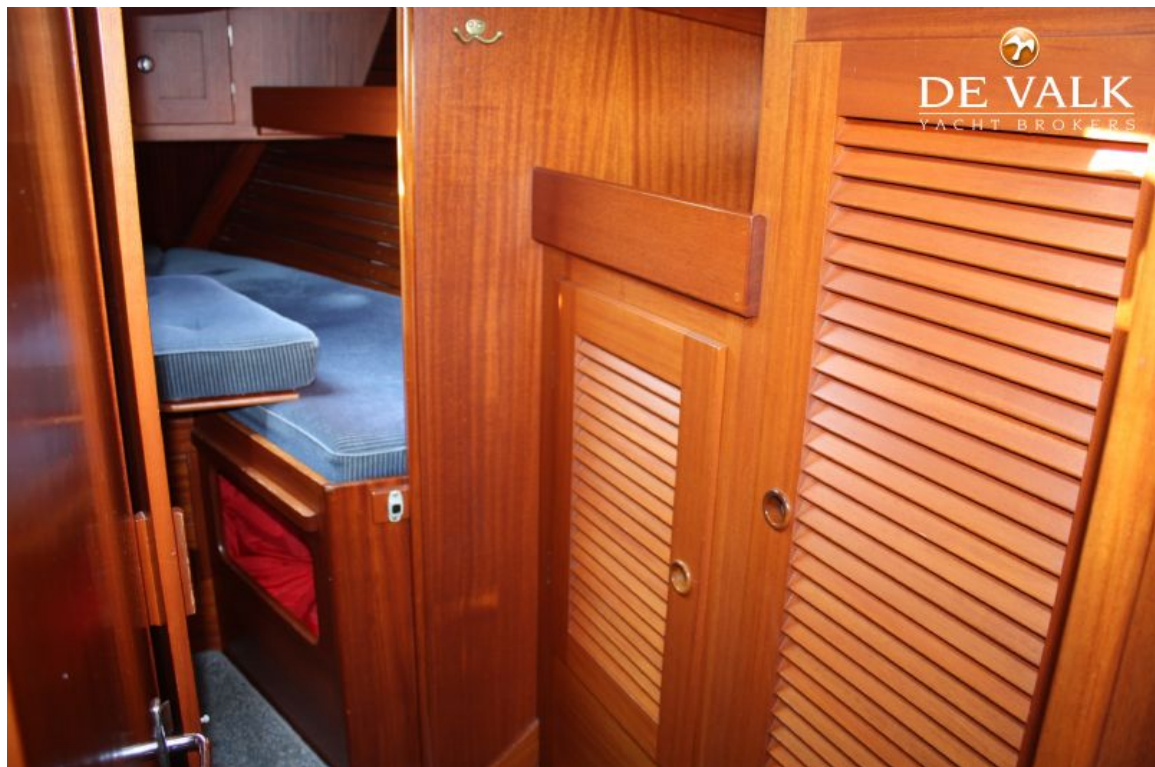


# HALLBERG RASSY 352 SCANDINAVIA

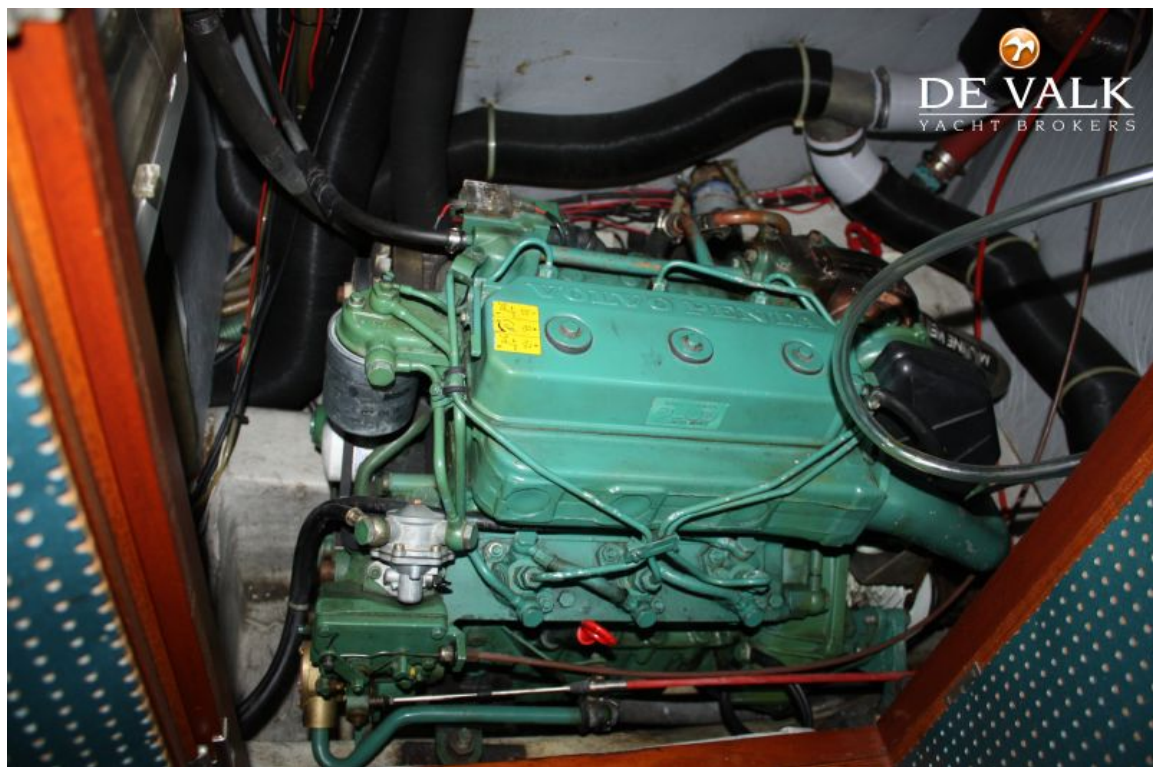




# HALLBERG RASSY 352 SCANDINAVIA

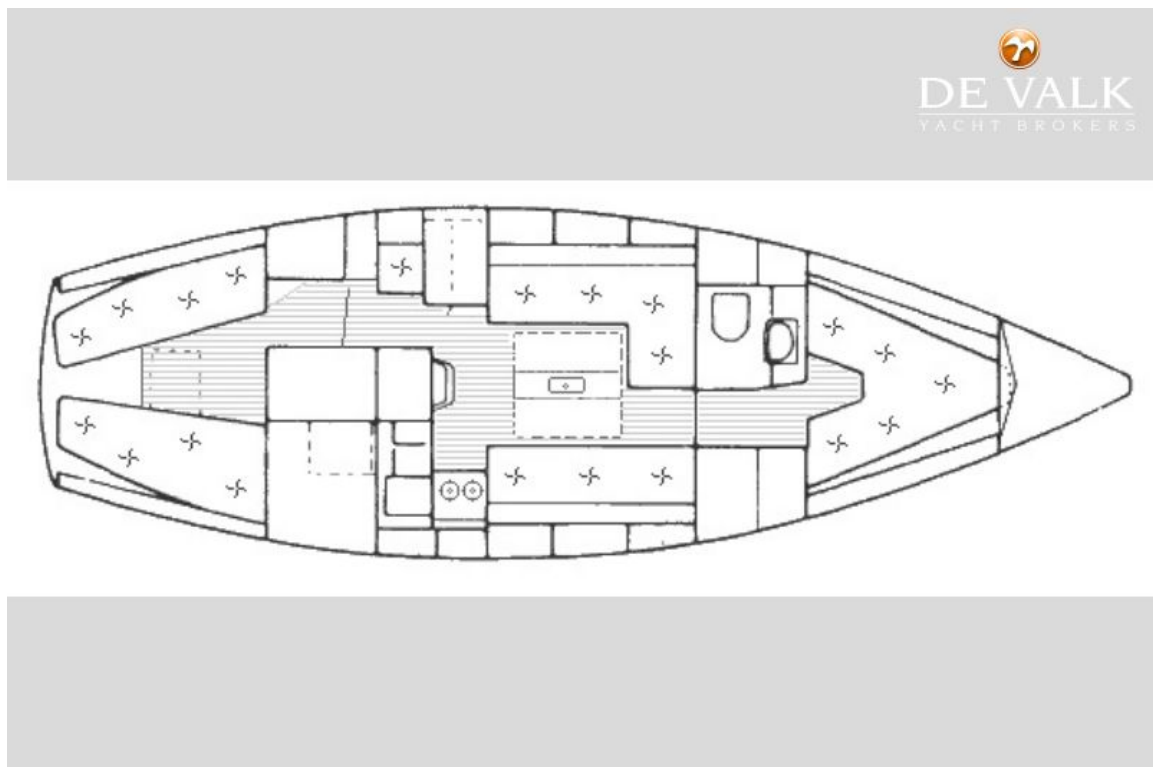
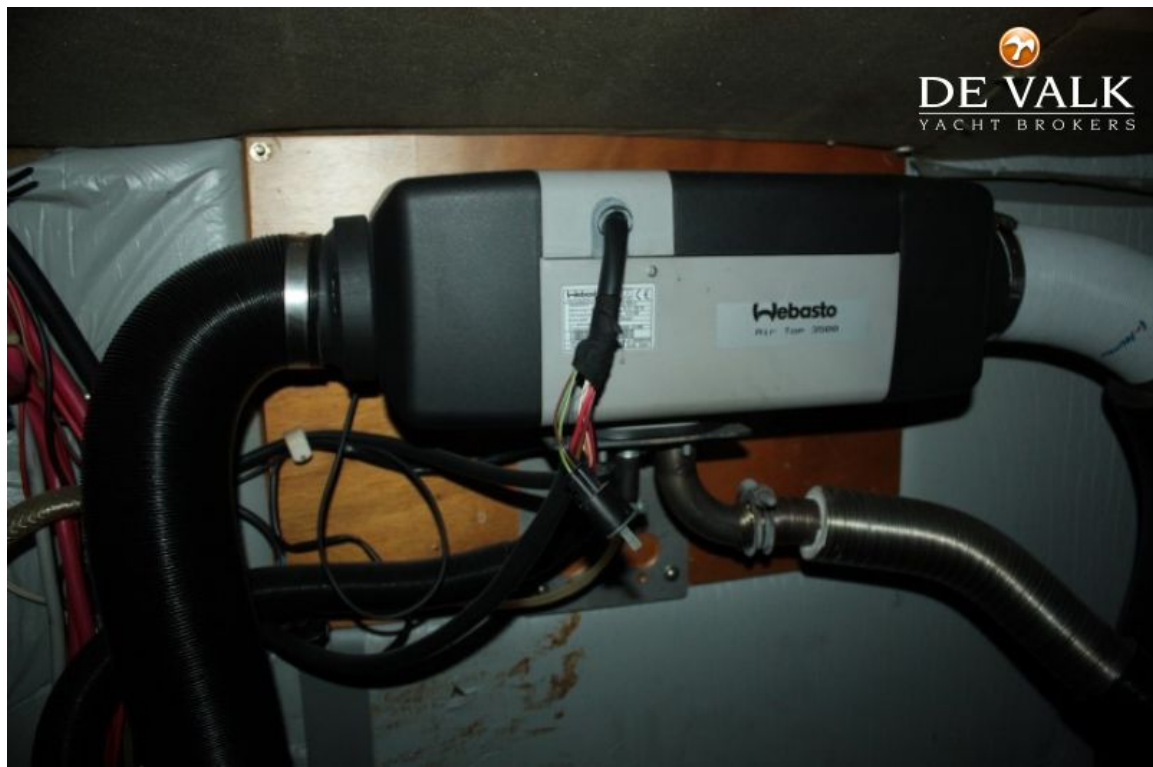


# HALLBERG RASSY 352 SCANDINAVIA





# HALLBERG RASSY 352 SCANDINAVIA



# HALLBERG RASSY 352 SCANDINAVIA

