



DE VALK
YACHT BROKERS



VAN DE STADT STADTSHIP 70



DE VALK
YACHT BROKERS

VAN DE STADT STADTSHIP 70

BROKER'S COMMENTS

The Van de Stadt Stadtship 70 clearly stands out. With her thoughtful design in high-quality aluminium, she offers a unique combination of comfort, safety and speed at sea. The Van de Stadt Stadtship 70 has a modern and luxuriously well-designed interior with enough space for technical solutions that make a longer stay on board at sea comfortable. Her keel stepped mast with cutter rigging and powered sail controls make sailing easy. Her deep cockpit with spacious doghouse provides a sheltered position with plenty of overview. This vessel is being offered in Co-operation with CB Selections.

Johan Schootstra

SPECIFICATIONS

Dimensions	21.00 x 5.10 x 2.90 (m)	Builder	K&M Jachtbouw
Built	2008	Cabins	4
Material	Aluminium	Berths	9
Engine(s)	1 x Perkins Sabre M150TI diesel	Hp/Kw	148.00 (hp), 108.93 (kw)
Asking price	€ 990.000 (VAT Paid)	Lying	contact Hindeloopen

CONTACT

Sales office	De Valk Hindeloopen	Telephone	+31 514 52 40 00
Address	Oosterstrand 1 8713 JS Hindeloopen The Netherlands	E-mail	hindeloopen@devalk.nl

DISCLAIMER

These particulars are given in good faith as supplied but cannot be guaranteed.



VAN DE STADT STADTSHIP 70

GENERAL

Model	VAN DE STADT STADTSHIP 70
Type	sailing yacht
LOA (m)	21,00
LWL (m)	18,60
Beam (m)	5,10
Draft (m)	2,90
Air draft min (m)	28,50
Headroom (m)	2,00
Year built	2008
Builder	K&M Jachtbouw
Country	The Netherlands
Designer	Van de Stadt Design
Displacement (t)	30
Ballast (tonnes)	lead 9t
CE norm	A
Hull material	aluminium
Hull colour	yes
Hull shape	round-bilged
Keel type	fin keel with bulb lead ballasted
Superstructure material	aluminium
Deck material	aluminium
Deck finish	Ecodeck new 2018
Superstructure deck finish	non-skid paint
Cockpit deck finish	Ecodeck new 2018
Deckhatch	7x
Radar arch	Aft ship
Fuel tank (litre)	aluminium 2x 500 ltr.
Level indicator (fuel tank)	yes
Fuel daytank (litre)	150 ltr.
Freshwater tank (litre)	aluminium 2x 1500 ltr. + 500 ltr. daytank



Level indicator (freshwater)	yes
Blackwater tank (litre)	300 ltr. for all heads
Level indicator (blackwater)	yes
Wheel steering	Jefa
Emergency tiller	yes

ACCOMMODATION

Cabins	4
Berths	9
Interior	mahogany combined with Light, scratch-resistant artificial material
Floor	teak and holly
Doghouse	yes
Saloon	yes
Headroom saloon (m)	2 mtr.
Heating	diesel ducted hot air
Air-conditioning	reverse cycle airco Cruisair
Navigation center	yes
Chart table	yes
Aft Cabin	2x
Dinette	yes
Galley	yes
Countertop	corian
Sink	stainless steel double
Cooker	calor gas Force10 3 burner
Oven	In cooker
Extractor	Miele
Microwave	Miele
Fridge	Vitrifrigo
Freezer	Two large drawers Vitrifrigo
Hot water system	220V + engine 2x boiler



VAN DE STADT STADTSHIP 70

Water pressure system	Pneumatic pressure
Dishwasher	Miele
Owners cabin	French bed Forward cabin
Bed length (m)	2 mtr.
Wardrobe	hanging/drawers/shelves
Bathroom	en suite
Toilet	Tecma
Toilet system	electric
Wash basin	yes
Shower	yes
Bath tub	yes
Guest cabin 1	bunk bed forward starboard side
Bed length (m)	2 mtr.
Wardrobe	hanging and shelves
Guest cabin 2	double bed + single bed aft cabin port side
Bed length (m)	2 mtr.
Wardrobe	hanging and shelves
Bathroom	en suite
Toilet	Tecma
Toilet system	electric
Wash basin	yes
Shower	yes
Guest cabin 3	bunk bed aft cabin starboard side
Bed length (m)	2 mtr.
Wardrobe	hanging and shelves
Bathroom	en suite
Toilet	Tecma
Toilet system	electric
Wash basin	yes
Shower	yes
Tender garage	With dinghy of 2,75 mtr.



MACHINERY

No of engines	1
Make	Perkins Sabre
Type	M150TI
HP	148
kW	108.93
Fuel	diesel
Maximum speed (kn)	10
Cruising speed (kn)	8,5
Engine cooling system	freshwater heat exchanger
Drive	shaft
Gearbox	hydraulic ZF45A
Engine controls	mechanical
Bowthruster	Retractable Pnuematic powered
Exhaust	watercooled
Propeller type	folding
Propeller blades	4
Propeller shaft material	stainless steel Ø 50mm
Manual bilge pump	yes
Electric bilge pump	5x throughout the vessel
Electrical installation	12 / 24 / 220V
Generator	Onan 7.5 Kva
Batteries	24 Volt 1000 Ah battery pack
Start battery	12 Volt 55 Ah
Service battery	12 Volt 200 Ah
Generator battery	12 Volt 55 Ah
Battery monitor	yes
Battery charger	Mastervolt IVO Smart 12 volt
Battery charger/inverter	Mastervolt Combi Ultra 24/3500 - 100
Shorepower	with cable
Insulation transformer	3x Mastervolt Mass GI 3.5



Watermaker	Spectra Newport 400, 64 L/h
Extra info	The pneumatic system is completely serviced in december 2022.
Extra info	She has a fixed hydrogenerator from "Watt & Sea" under the hull.
Extra info	There are two air compressors on board

NAVIGATION

Compass	3x on both sides in cockpit and on steering pedestal.
Multi control display	7x B&G Triton all in one display
Depth sounder	Data from B&G triton display
Log	Data from B&G triton display
Windset	Data from B&G triton display
VHF	Icom IC-M801E Simrad RS87
VHF handheld	Simrad HT50
Autopilot	Simrad & B&G
Radar	B&G
Radar/GPS/plotter	B&G
Navtex	Furuno
AIS transceiver	Em-Trak A200 AIS Class A
EPIRB	yes
Personal MOB transmitter	Ais senders in the life jackets
Extra info	Iridium satellite phone

EQUIPMENT

Fixed hardtop	Aluminium
Bimini	With stainless steel frame, can be used during sailing
Cockpit cushions	yes
Cockpit table	Recessed into the floor, on pneumatic lift
Bathing platform	Pneumatic operated folding platform
Boarding ladder	On bathing platform



VAN DE STADT STADTSHIP 70

Anchor	Bruce Stainless steel
Anchor chain	Stainless steel 100 mtr.
Windlass	electrical Lewmar
Capstan	yes
Dinghy	yes
Outboard	yes
Sea railing	yes
Grab rail (superstructure)	aluminium
Railing side opening gates	Both sides
Pushpit	yes
Pulpit	yes
Lifejackets	yes
Safety harness	yes
Lifebuoy	yes
Danbuoy	yes
Horn	air pressure
TV	Yes
Radio-cd player	Decker Grand Prix
Fire extinguisher	Multiple

RIGGING

Rigging	sloop-cutter
Standing rigging	Rod
Material mast	carbon
Spreaders	3 pair
Keel stepped mast	yes
Mainsail	Elvstrøm 140 m ² new 2023
Mainsail cover	Over Carbon Park avenue boom
Battcars	yes
Genoa	Elvstrøm 90m ² new 2024
Genoa furler	Reckmann



Staysail	40m ²
Staysail furler	Reckmann
Trysail	41 m ²
Reefing System	slabreefing
Backstay adjuster	hydraulic Navtec
Boomvang	hydraulic Navtec
Primary sheet winch	4x Harken 980 electric winches
Halyard winches	2x Harken 60 on mast
Multifunctional winches	yes
Spi-pole	carbon
Gennaker pole	Pneumatic operated & extendable carbon bowsprit for gennaker
Isolated backstay	yes
Extra info	There is a hydraulic system to tension the backstay, boomvang, outhaul and the cutterstay.
Extra info	Carbon Park avenue boom with cockpit lighting



VAN DE STADT STADTSHIP 70



VAN DE STADT STADTSHIP 70



VAN DE STADT STADTSHIP 70

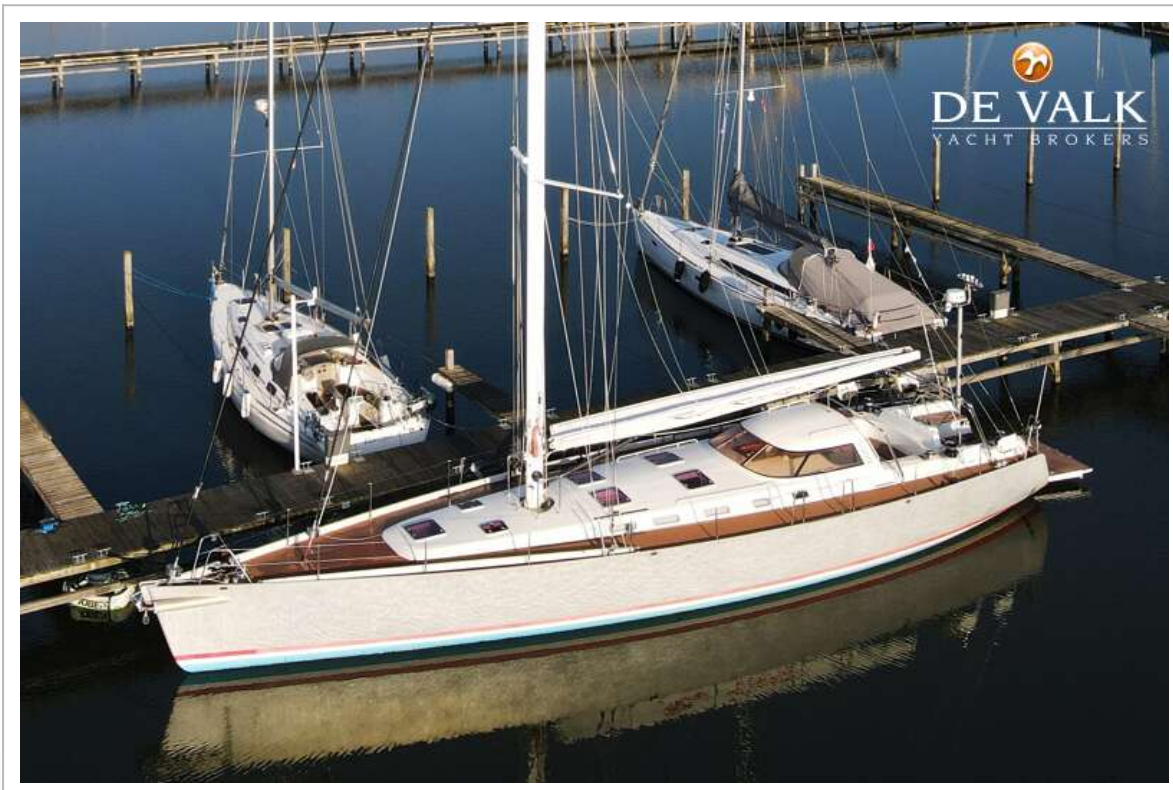


VAN DE STADT STADTSHIP 70





VAN DE STADT STADTSHIP 70



VAN DE STADT STADTSHIP 70



VAN DE STADT STADTSHIP 70



VAN DE STADT STADTSHIP 70



VAN DE STADT STADTSHIP 70



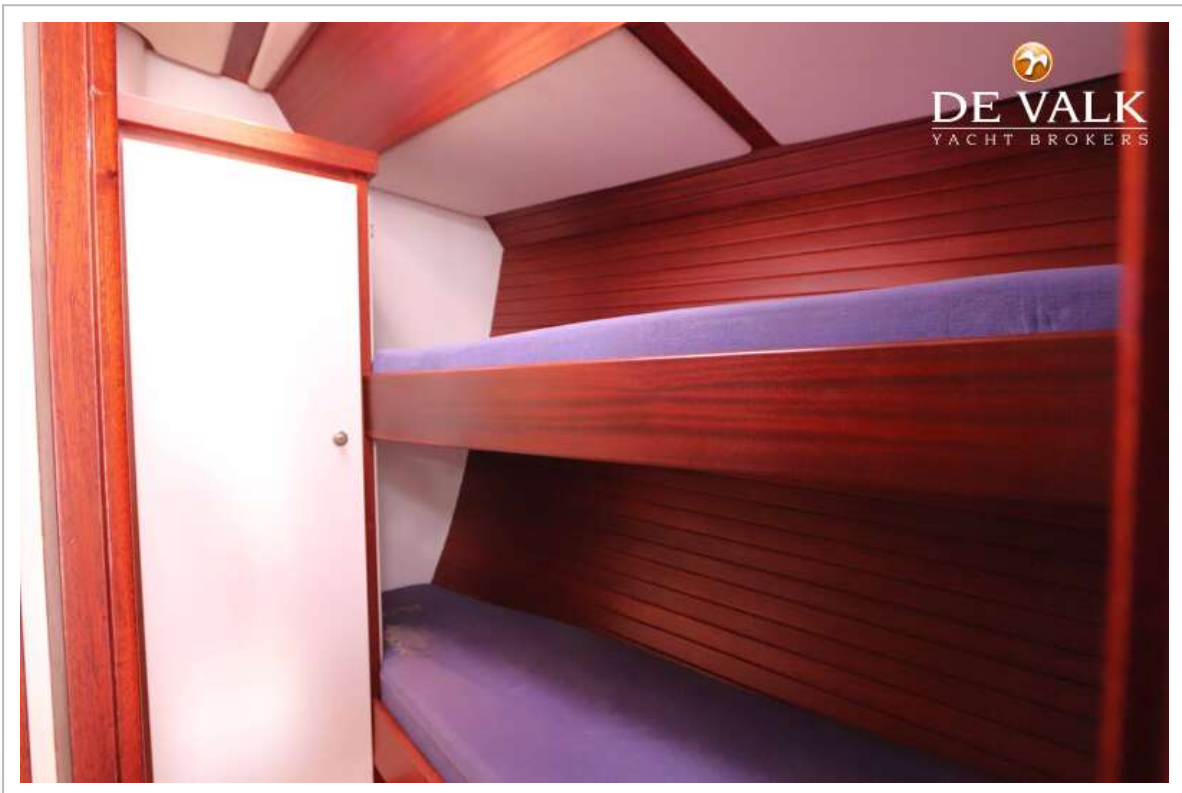
VAN DE STADT STADTSHIP 70



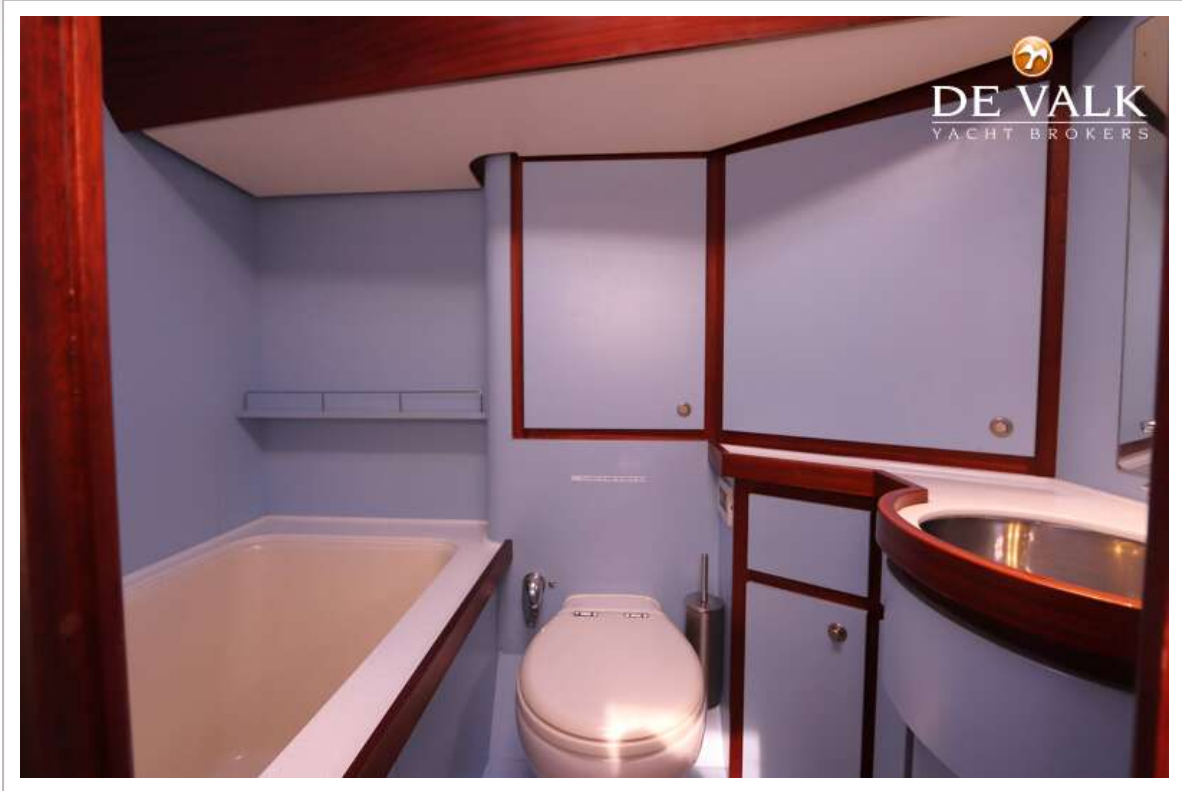
VAN DE STADT STADTSHIP 70



VAN DE STADT STADTSHIP 70



VAN DE STADT STADTSHIP 70



VAN DE STADT STADTSCHIP 70



VAN DE STADT STADTSHIP 70



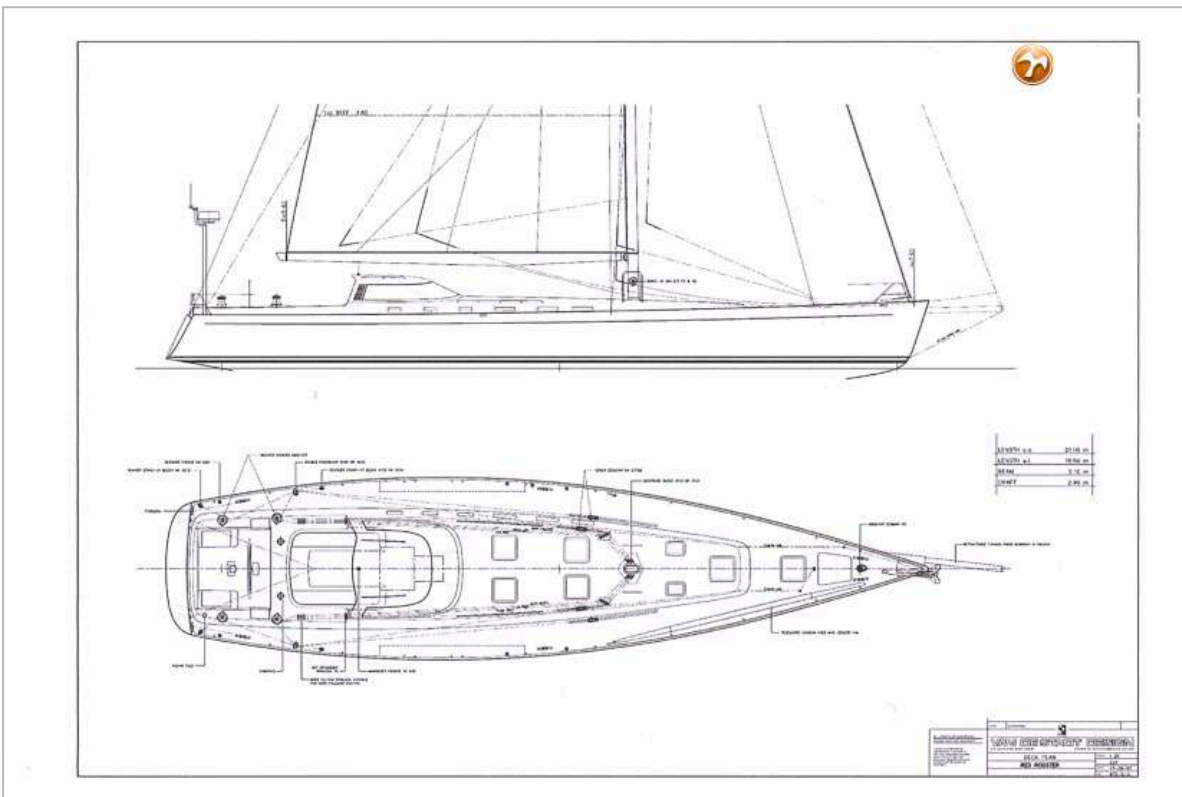
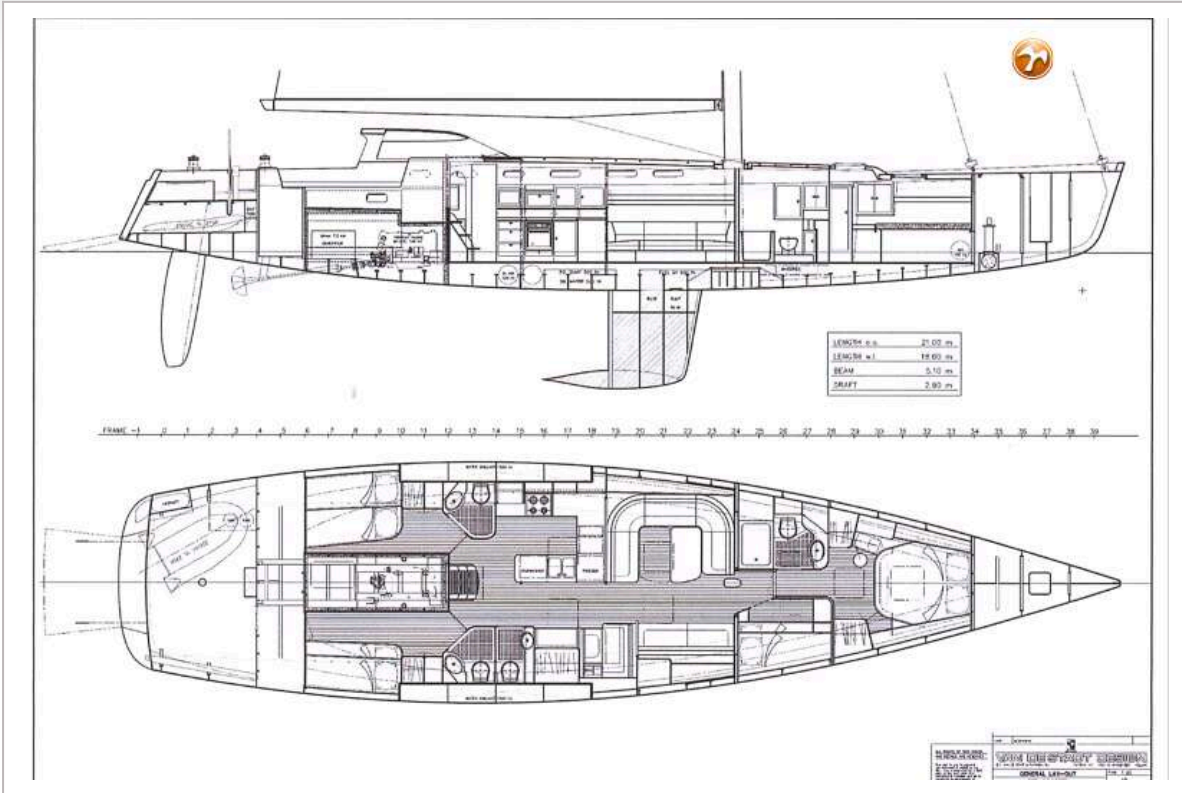


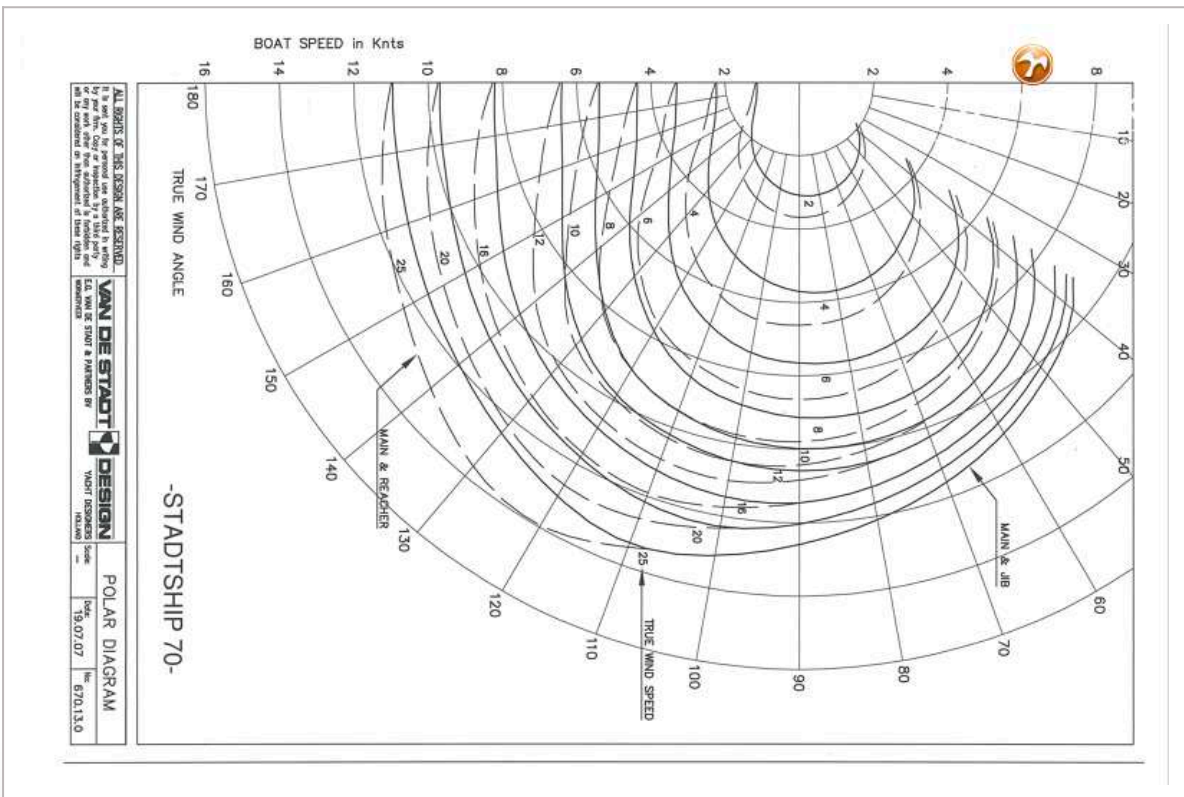
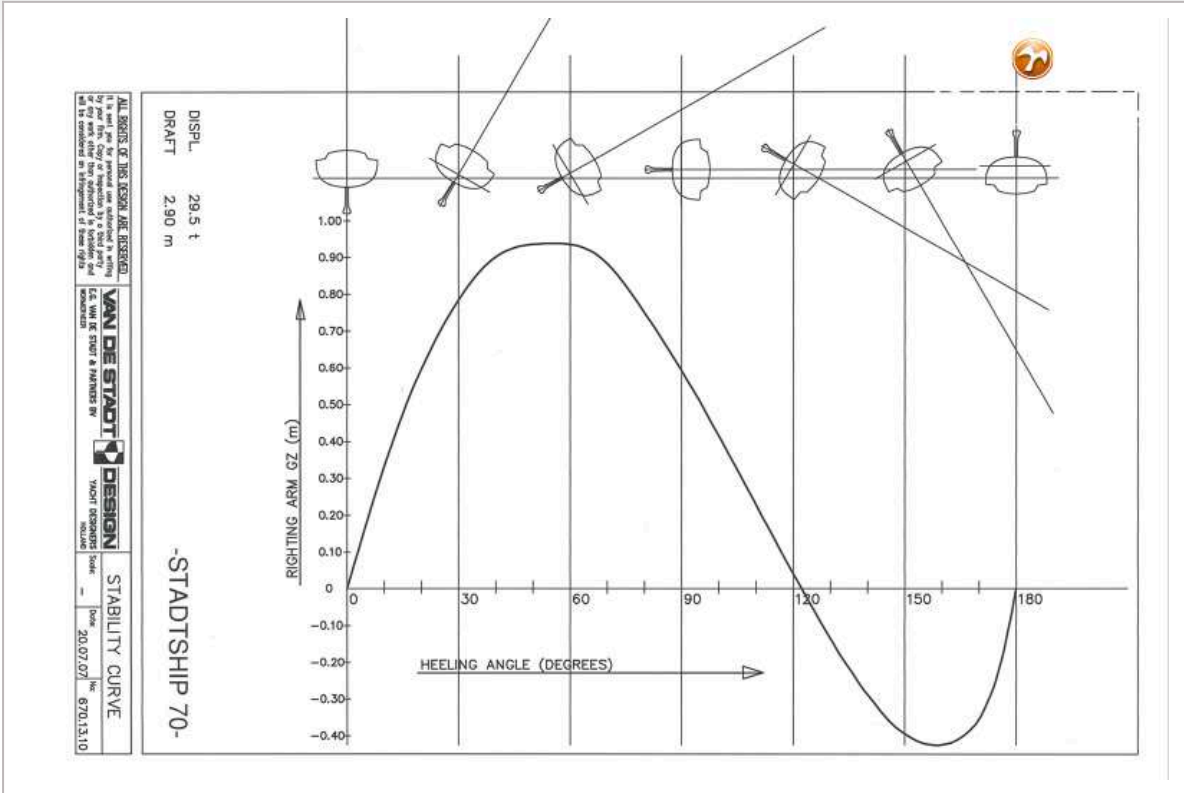
VAN DE STADT STADTSHIP 70





VAN DE STADT STADTSHIP 70





VAN DE STADT STADTSHIP 70

