



DE VALK  
YACHT BROKERS



PUFFIN 50



DE VALK  
YACHT BROKERS

BROKERAGE | CHARTER | BERTHS | FINANCE | INSURANCE | YACHT MANAGEMENT

# PUFFIN 50

## BROKER'S COMMENTS

This Puffin 50, first launched in 2003, is a remarkable example of Olivier van Meer's celebrated design. This particular yacht has seen very light use and has been well maintained throughout her life, presenting in excellent condition. With her versatile centerboard and a shallow draft of just 1.35 m, she offers exceptional access to cruising grounds where many yachts cannot follow, without compromising on bluewater capability. A rare opportunity to acquire a lightly used, beautifully kept Puffin 50, ready to sail and enjoy.

*Johan Nooitgedagt*

## SPECIFICATIONS

<b>Dimensions</b>	16.00 x 4.95 x 3,10 / 1.35 (m)	<b>Builder</b>	Mekon Lemmer
<b>Built</b>	1999	<b>Cabins</b>	3
<b>Material</b>	Steel	<b>Berths</b>	5
<b>Engine(s)</b>	1 x Vetus Deutz DT43 diesel	<b>Hp/Kw</b>	106.00 (hp), 78.02 (kw)
<b>Asking price</b>	€ 395.000 (VAT Paid)	<b>Lying</b>	elsewhere / Not at sales office

## CONTACT

<b>Sales office</b>	De Valk Hindeloopen B.V.	<b>Telephone</b>	+31 514 52 40 00
<b>Address</b>	Oosterstrand 1 8713 JS Hindeloopen NL	<b>E-mail</b>	hindeloopen@devalk.nl

## DISCLAIMER

These particulars are given in good faith as supplied but cannot be guaranteed.



## GENERAL

Model	PUFFIN 50
Type	sailing yacht
LOA (m)	16,00
LWL (m)	14,15
Beam (m)	4,95
Draft (m)	1,35
Draft min (m)	3,10
Headroom (m)	2,00
Year built	1999
Launched	2003
Builder	Mekon Lemmer
Country	The Netherlands
Designer	Olivier van Meer
Displacement (t)	32
Ballast (tonnes)	lead 6
Gross tonnage	25 t
Net tonnage	7 t
Hull material	steel
Hull colour	blue
Hull thickness (mm)	5 mm
Hull shape	round-bilged
Keel type	centreboard
Superstructure material	steel
Superstructure (mm)	4 mm
Deck plate thickness (mm)	5 mm
Rubbing strake	stainless steel
Deck material	steel
Deck finish	non-skid paint
Superstructure deck finish	non-skid paint
Cockpit deck finish	teak



Antifouling (year)	2025
Window frame	brass
Window material	double glazing
Deckhatch	7x Lewmar
Portholes	brass
Insulation	foam
Radar arch	non collapsible
Fuel tank (litre)	epoxy   500 ltr.
Fuel tank 2 (litre)	epoxy   500 ltr.
Level indicator (fuel tank)	yes
Fuel daytank (litre)	epoxy   100 ltr.
Freshwater tank (litre)	epoxy   650 ltr.
Level indicator (freshwater)	yes
Blackwater tank (litre)	epoxy   450 ltr.
Level indicator (blackwater)	yes
Blackwater tank extraction	deck extraction + pump
Wheel steering	mechanical
Outside helm position	yes

## ACCOMMODATION

Cabins	3
Berths	5
Interior	mahogany
Floor	carpet
Open cockpit	yes
Deck saloon	yes
Saloon	yes
Headroom saloon (m)	2,00 mtr.
Heating	central hot water
Chart table	yes
Dinette to convert into berth	yes



Opening door to cockpit	yes
Galley	yes
Countertop	corian
Sink	stainless steel   Double
Cooker	induction   Etna   four burner
Extractor	yes
Microwave/oven combi	Etna
Fridge	Frigomatic
Freezer	yes
Hot water system	220V or central heating
Water pressure system	electrical
Manual and/or foot pump	yes
Owners cabin	double bed
Bed length (m)	2,05 mtr.
Wardrobe	hanging
Guest cabin 1	twin single
Bed length (m)	2,25 mtr.
Wardrobe	hanging/drawers/shelves
Toilet	separate
Toilet system	electric
Wash basin	at the toilet
Shower	yes

## MACHINERY

No of engines	1
Make	Vetus Deutz
Type	DT43
HP	106
kW	78.02
Fuel	diesel
Year installed	2001



# PUFFIN 50

Maximum speed (kn)	8
Cruising speed (kn)	6
Consumption (l/hr)	6
Range (nm)	900
Engine cooling system	closed keelcooling
Drive	shaft
Engine controls	bowden cable
Gearbox	hydraulic
Bowthruster	electric   Cupa CP90
Propeller type	folding   Maxprop
Propeller blades	3
Propeller shaft material	stainless steel
Shaft lubrication	water
Manual bilge pump	yes
Electric bilge pump	yes
Electrical installation	24 / 230 V
Generator	dry exhaust Whispersen 9,4 Kw
Start battery	2x 12 V 150 Ah
Service battery	12x 2 V 800 Ah
Generator battery	12 V 150 Ah
Bowthruster battery	2x 12 V 160 Ah
Battery monitor	yes
Battery charger	2x Mastervolt Mass 24/75
Inverter	2x Mastervolt Mass Sine 24/2500
Diode battery combiners	yes
Shorepower	with cable

## NAVIGATION

Compass	yes
Electric compass	Fluxgate NX45
Depth sounder/log	yes



VHF	Sailor RT 2048   Sailor RT 4801
Autopilot	Simrad AP 25
Radar	Simrad
Plotter	B&G Vulcan 7
Navtex	Mcmurdo ICS nav6
AIS transponder	yes

## EQUIPMENT

Anchor	yes
Anchor chain	13 mm 80 mtr.
Windlass	manual
Dinghy	rigid inflatable
Davits controls	yes
Sea railing	wire
Grab rail (superstructure)	stainless steel
Railing side opening gates	yes
Pushpit	yes
Pulpit	yes
Life raft	container
Lifejackets	yes
Safety harness	yes
Lifebuoy	yes
Danbuoy	yes
Radar reflector	yes
Fenders	yes
Mooring lines	yes
Fire extinguisher	yes
Extinguisher in engine room	yes
Auto extinguisher system	yes

## RIGGING



<b>Rigging</b>	cutter
<b>Standing rigging</b>	wire
<b>Brand mast</b>	Hallspars
<b>Material mast</b>	aluminium
<b>Spreaders</b>	Double
<b>Mainsail</b>	65,30 m <sup>2</sup>   De Vries Sails
<b>Mainsail cover</b>	yes
<b>Battcars</b>	yes
<b>Fully battened mainsail</b>	yes
<b>Cutterstay</b>	yes
<b>Jib</b>	32,50 m <sup>2</sup>   De Vries Sails
<b>Genoa</b>	85,50 m <sup>2</sup>   De Vries Sails
<b>A-symetric spi</b>	235 m <sup>2</sup>   De Vries Sails
<b>Stormjib</b>	25 m <sup>2</sup>   De Vries Sails
<b>Reefing System</b>	slabreefing
<b>Boomvang</b>	mechanical
<b>Primary sheet winch</b>	2x Andersen 46ST
<b>Secondary sheet winch</b>	1x Andersen 46ST
<b>Genoa sheetwinches</b>	2x Andersen 62ST
<b>Halyard winches</b>	2x Andersen 46ST
<b>Reefing winch</b>	1x Anderson 40 ST
<b>Spi-pole</b>	yes





# PUFFIN 50



# PUFFIN 50





# PUFFIN 50



# PUFFIN 50

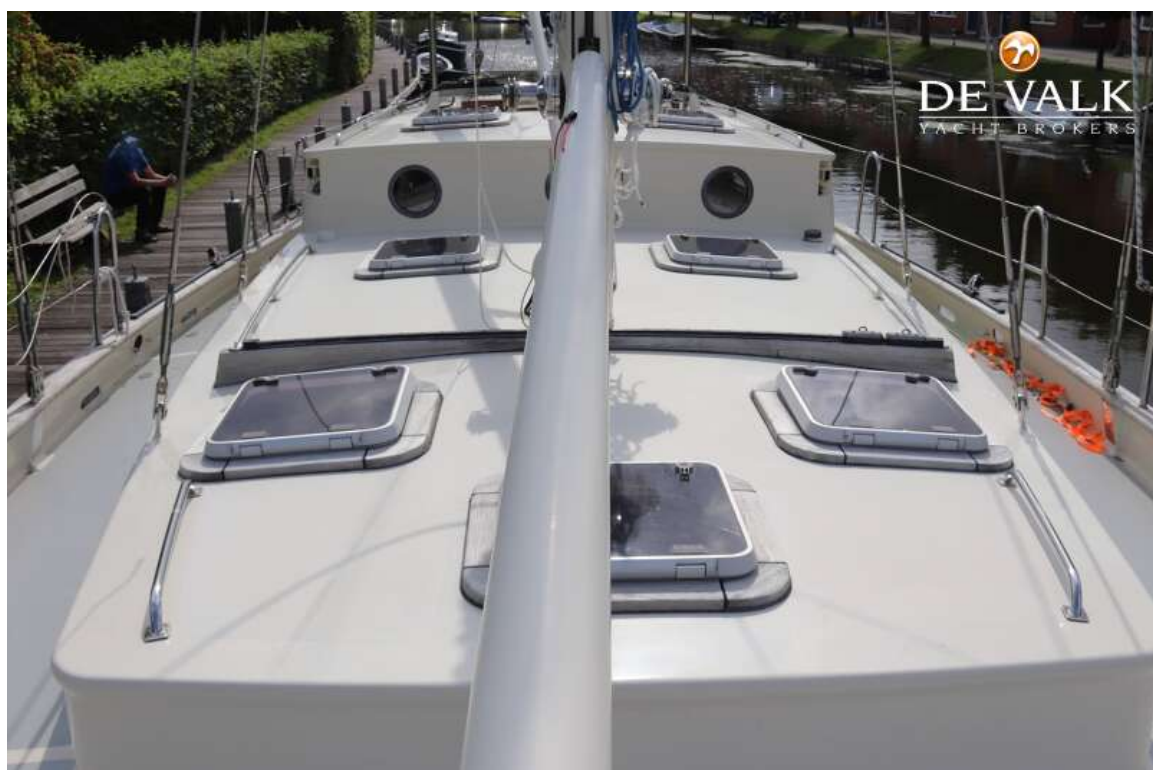




# PUFFIN 50



# PUFFIN 50





# PUFFIN 50



# PUFFIN 50

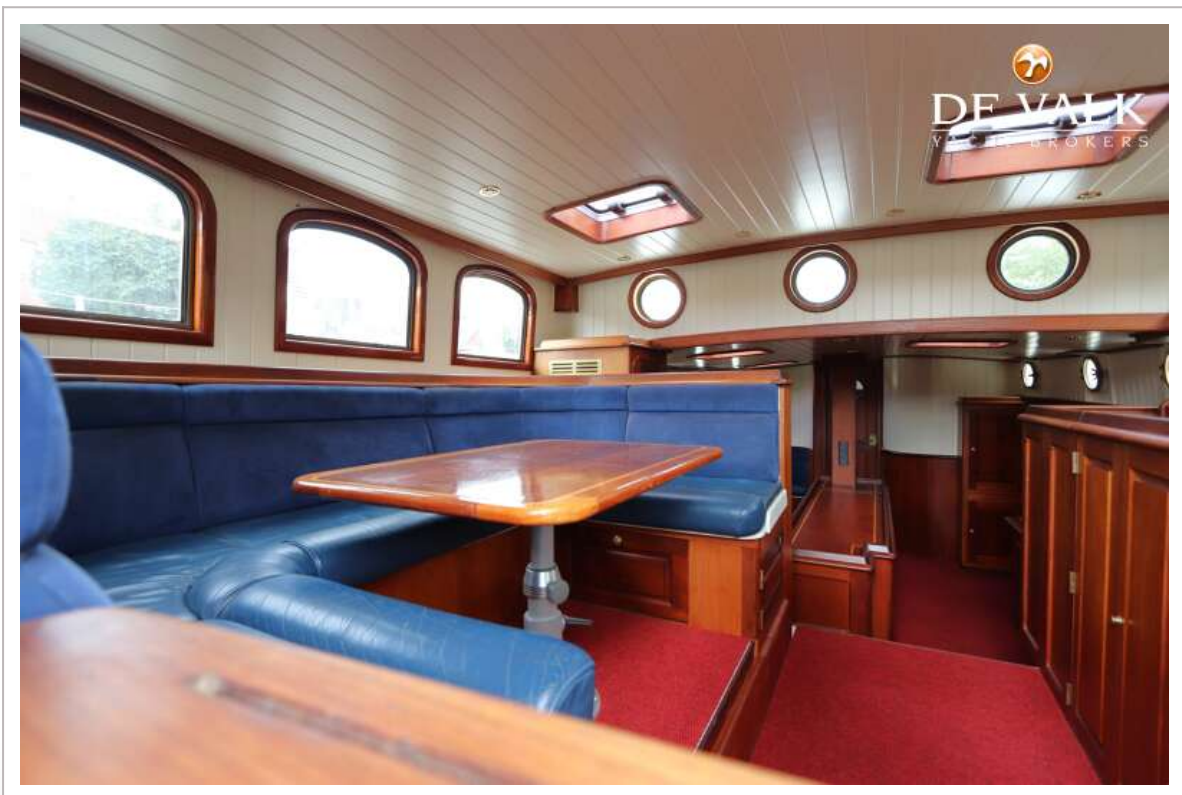




# PUFFIN 50



# PUFFIN 50

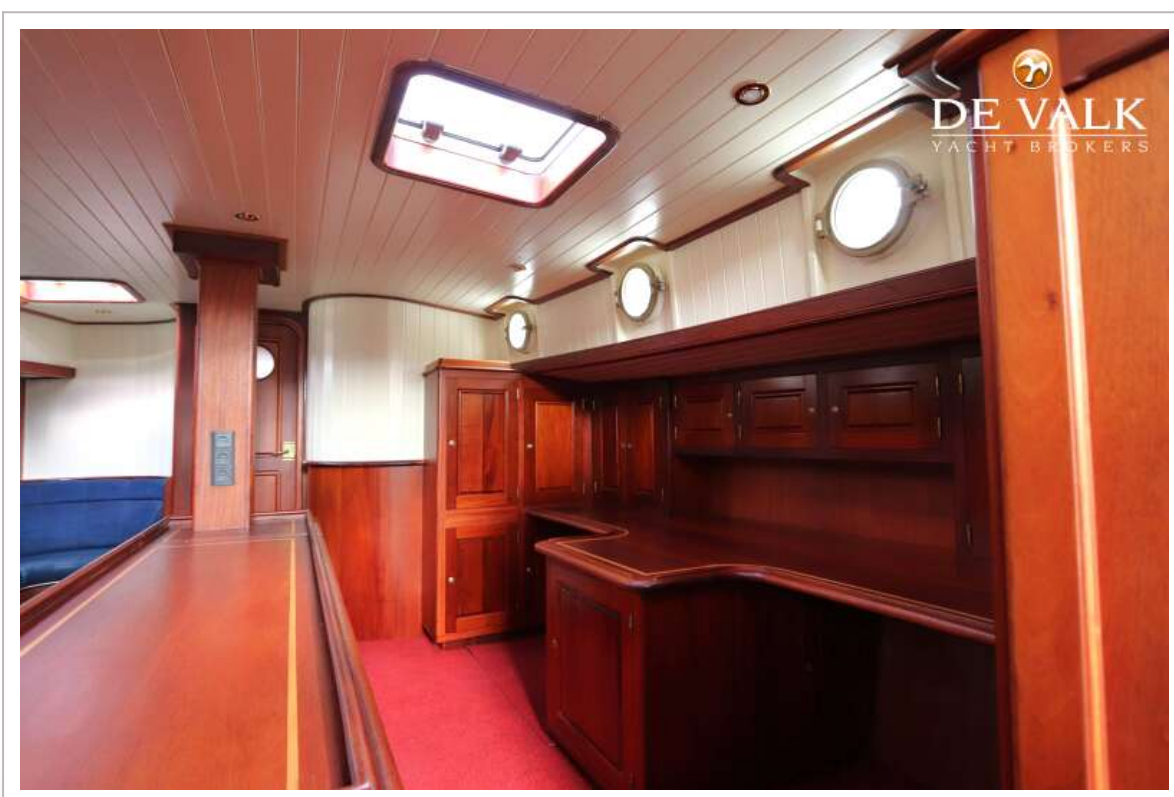




## PUFFIN 50

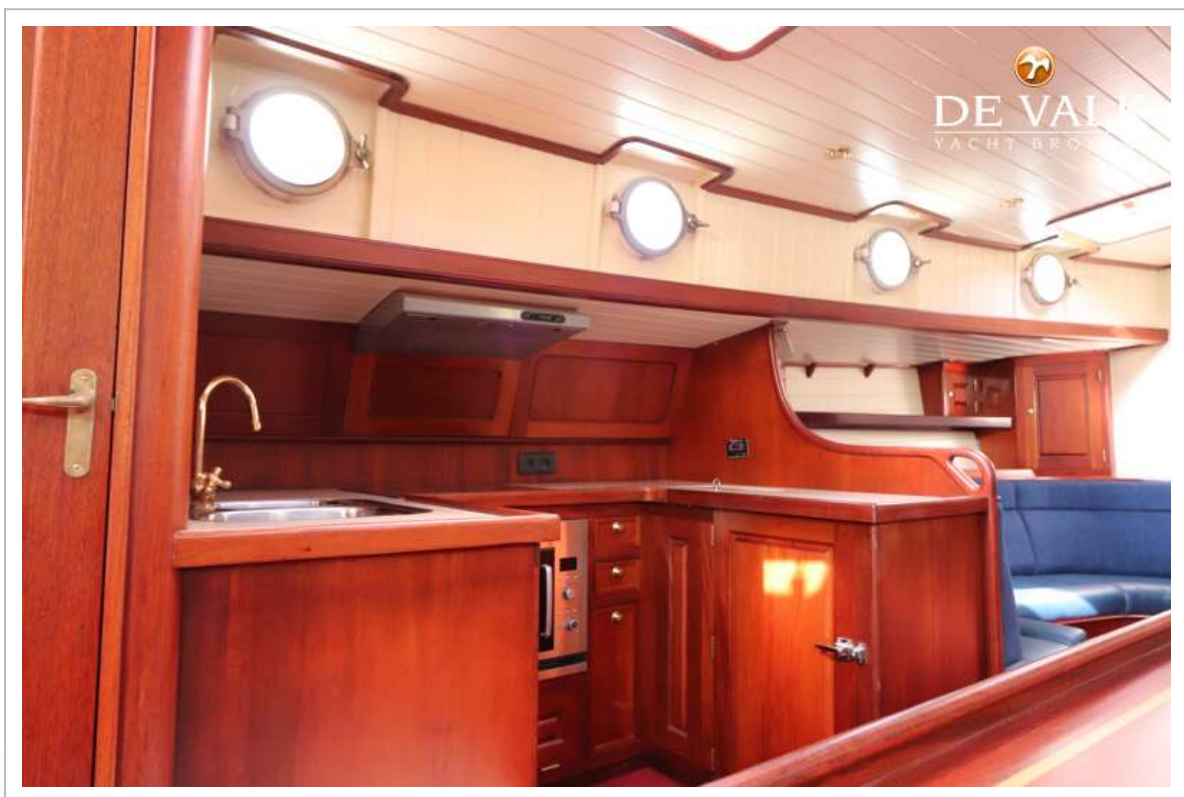
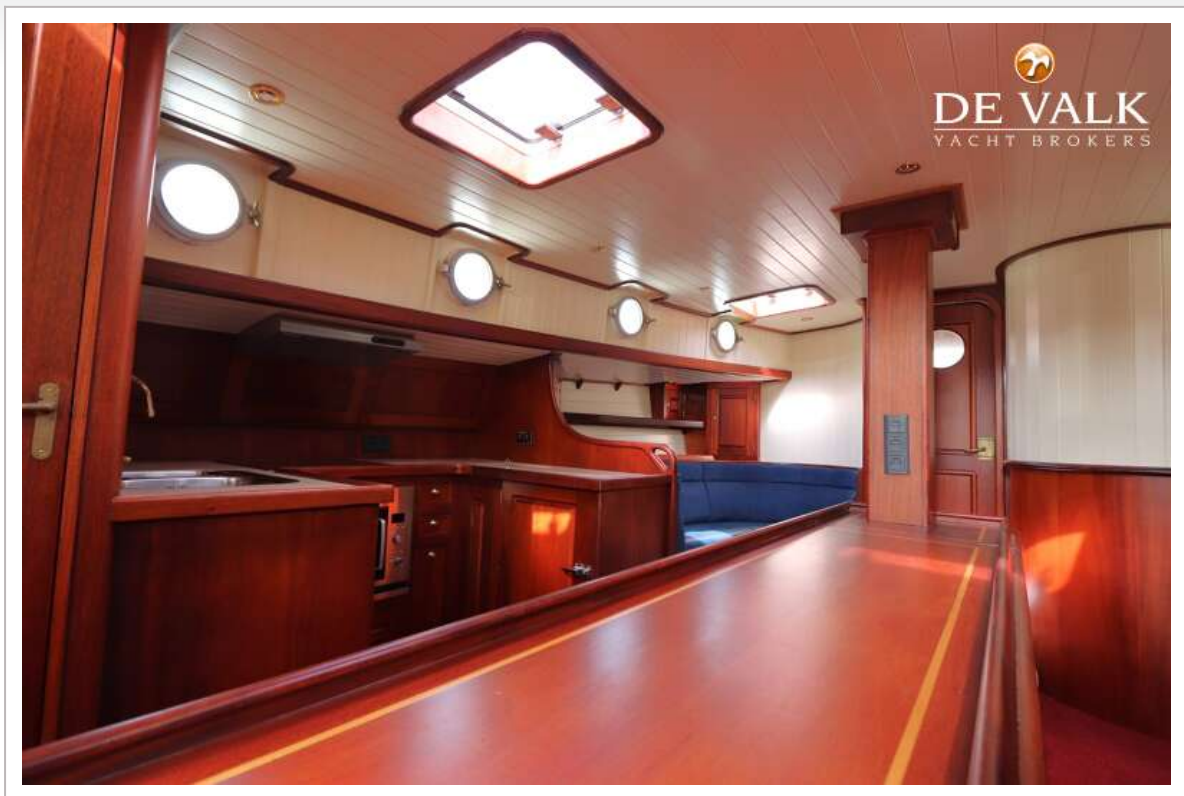


# PUFFIN 50

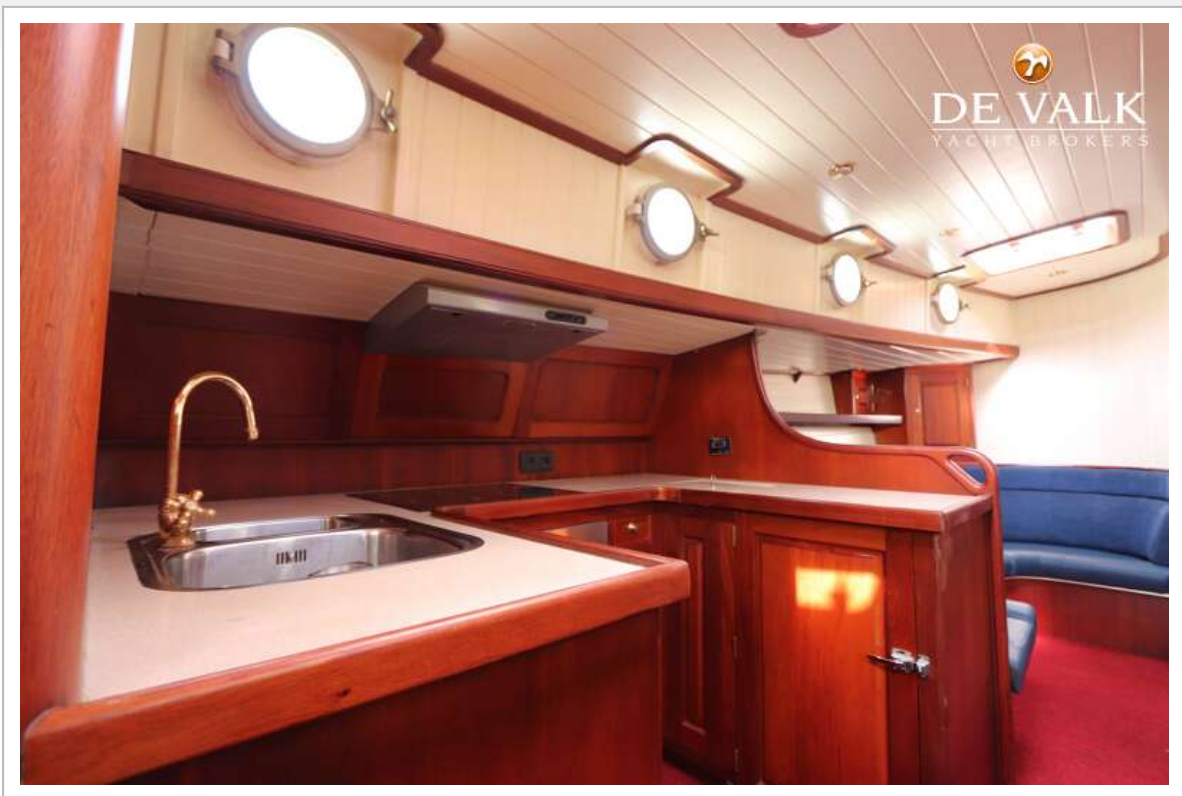




# PUFFIN 50



## PUFFIN 50

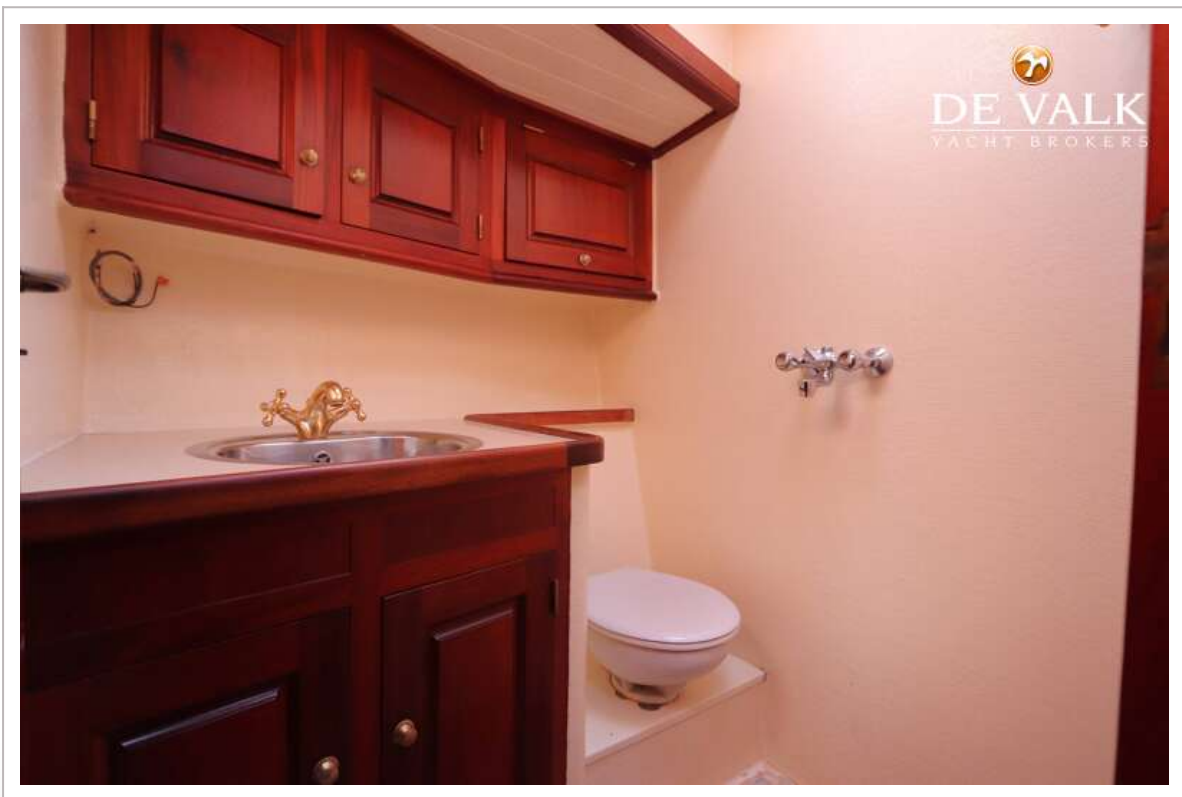
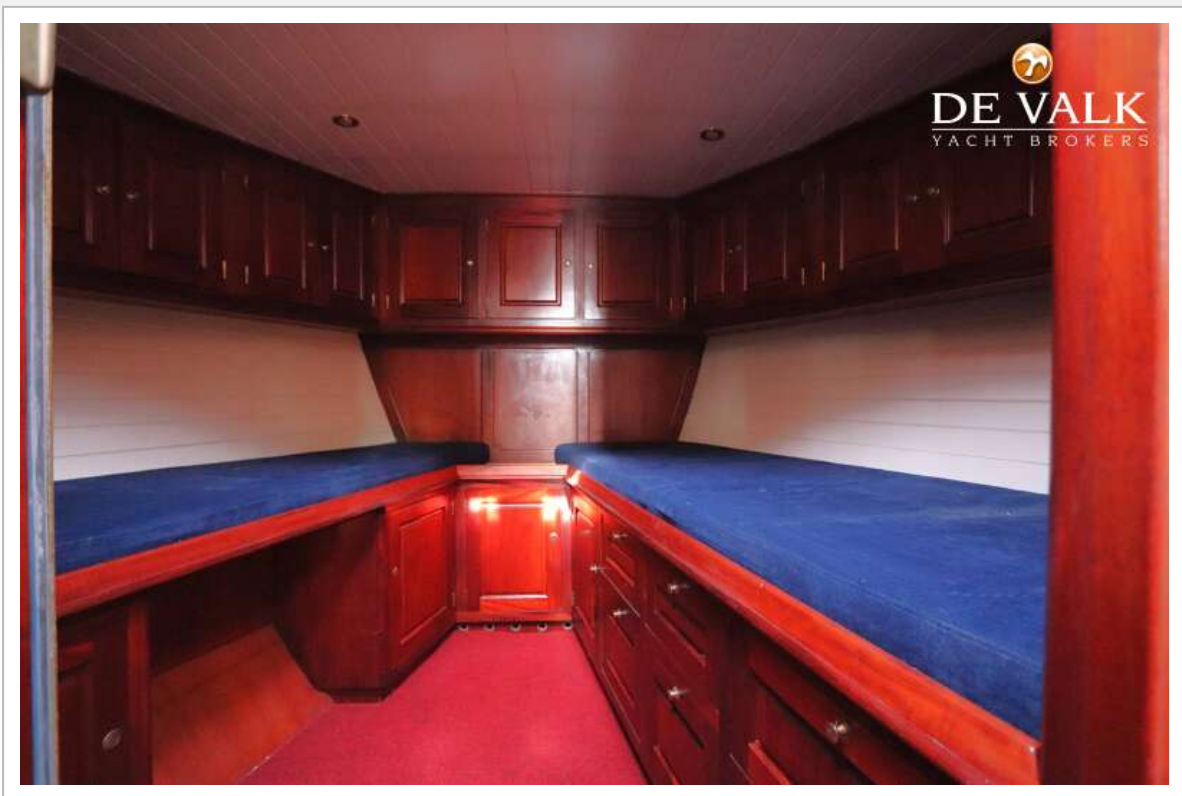




## PUFFIN 50

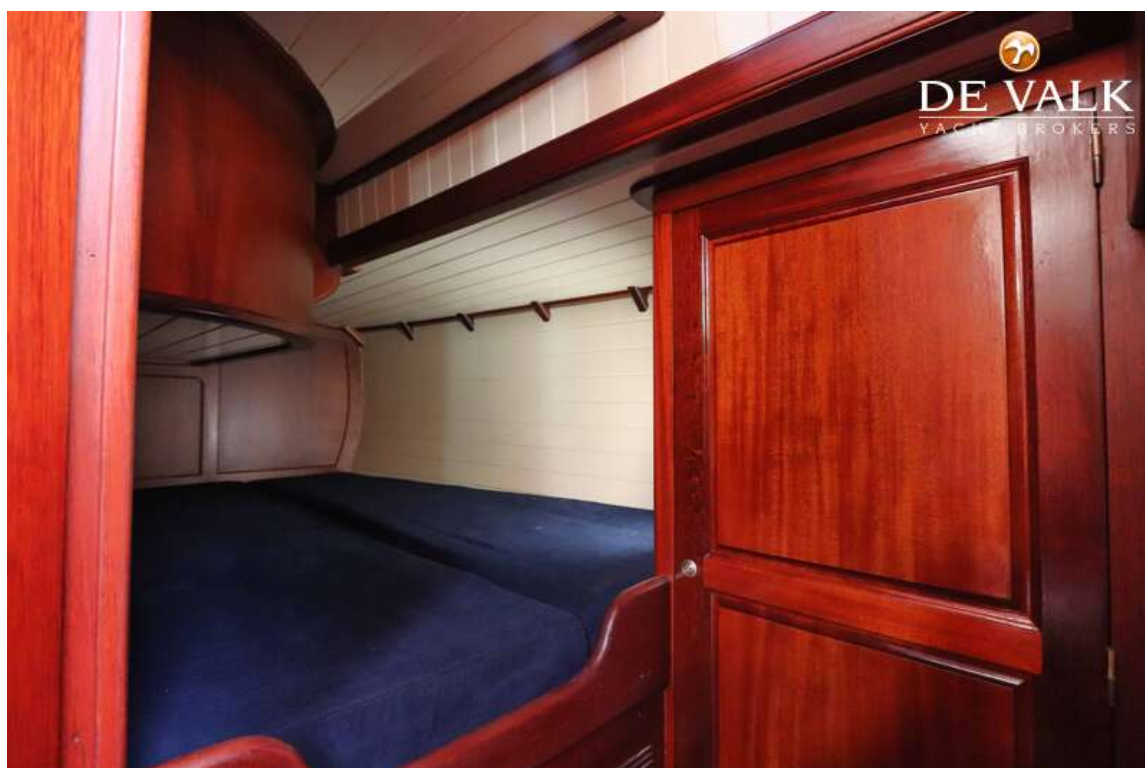
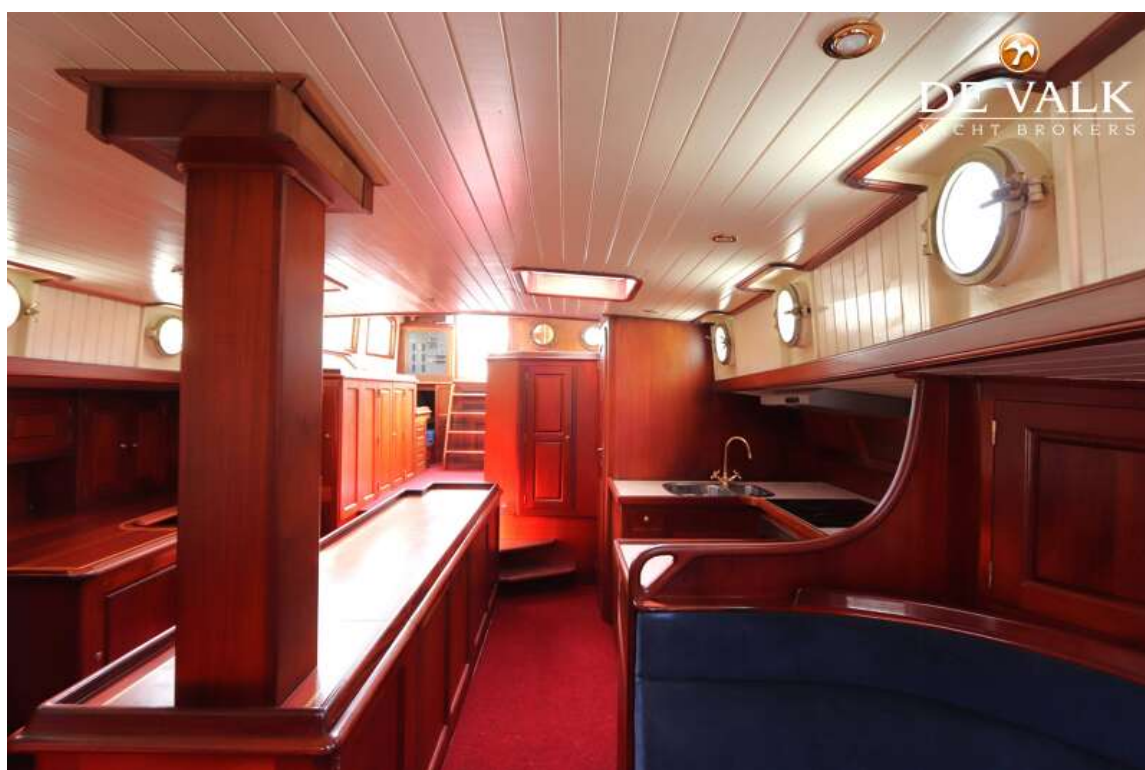


## PUFFIN 50





# PUFFIN 50



## PUFFIN 50

