



DE VALK  
YACHT BROKERS



BAVARIA 37 C3



DE VALK  
YACHT BROKERS

BROKERAGE | CHARTER | BERTHS | FINANCE | INSURANCE | YACHT MANAGEMENT

## BROKER'S COMMENTS

Leave the marina and the Bavaria 37 instantly shows the active sailor that this is where she truly belongs. Fast and responsive, the 37 is a comfortable cruiser for any conditions. This well kept Bavaria is a practical sailing yacht with a pleasant saloon, a nice large owner's and two guest cabins. Keel: 1,35 m.

*Reinier van der Wolf*

## SPECIFICATIONS

<b>Dimensions</b>	11.55 x 3.68 x 1.35 (m)	<b>Builder</b>	Bavaria Yachtbau GmbH, Giebelstadt
<b>Built</b>	2001	<b>Cabins</b>	3
<b>Material</b>	GRP	<b>Berths</b>	6
<b>Engine(s)</b>	1 x Volvo Penta MD2030 diesel	<b>Hp/Kw</b>	29.00 (hp), 21.32 (kw)
<b>Asking price</b>	sold (VAT )	<b>Lying</b>	contact Monnickendam

## CONTACT

<b>Sales office</b>	De Valk Monnickendam B.V.	<b>Telephone</b>	+31 (0)299 65 63 50
<b>Address</b>	Hoogedijk 6 1145 PM Katwoude NL	<b>E-mail</b>	monnickendam@devalk.nl

## DISCLAIMER

These particulars are given in good faith as supplied but cannot be guaranteed.



## GENERAL

Model	BAVARIA 37 C3
Type	sailing yacht
LOA (m)	11,55
LWL (m)	8,90
Beam (m)	3,68
Draft (m)	1,35
Air draft (m)	16,20
Headroom (m)	1,95
Year built	2001
Builder	Bavaria Yachtbau GmbH, Giebelstadt
Country	Germany
Designer	J&J Design
Displacement (t)	5,36
Ballast (tonnes)	cast iron 1,78
CE norm	A
Hull material	GRP
Hull colour	white
Hull shape	roundbilged
Keel type	fin keel
Superstructure material	GRP
Deck material	GRP
Deck finish	moulded in
Superstructure deck finish	moulded in
Cockpit deck finish	teak
Antifouling (year)	International Micron EXTRA
Dorades	Ufo S/S
Window frame	aluminum
Window material	perspex
Fuel tank (litre)	GRP 150
Level indicator (fuel tank)	yes



Freshwater tank (litre)	GRP 2x 150
Level indicator (freshwater)	yes
Wheel steering	Withlock pedestal
Emergency tiller	yes
Extra info	Two extra portholes, one window rubber aft cabin mast be checked

## ACCOMMODATION

Cabins	3
Berths	6
Interior	mahogany
Saloon	yes
Headroom saloon (m)	1,95
Chart table	yes
Aft Cabin	2x
Galley	yes
Sink	yes
Cooker	calor gas
Oven	yes
Fridge	yes
Hot water system	220V + engine Boiler
Water pressure system	electrical
Owners cabin	v-bed
Bed length (m)	2,00 m.
Wardrobe	yes
Guest cabin 1	double bed
Wardrobe	yes
Bathroom	shared
Toilet	yes
Toilet system	manual
Wash basin	yes



Shower	yes
Guest cabin 2	double bed
Wardrobe	yes
Extra info	Small bench saloon not mountend, still available.

## MACHINERY

No of engines	1
Make	Volvo Penta
Type	MD2030
HP	29,00
kW	21,32
Fuel	diesel
Year installed	2001
Maximum speed (kn)	7
Cruising speed (kn)	6,5
Consumption (l/hr)	4
Engine hours	484
Engine cooling system	freshwater heat exchanger
Drive	sail-drive
Gearbox	mechanical
Engine controls	bowden cable
Propeller type	fixed
Propeller blades	2
Manual bilge pump	yes
Electric bilge pump	yes
Electrical installation	12v/220v
Start battery	yes
Service battery	yes
Battery charger	25A
Shorepower	yes



## NAVIGATION

Compass	yes
VHF	Shipmate RS8300
Autopilot	Autohelm ST4000
Plotter	Navmann 5500I
Extra info	Autohelm Tridata: log/depth

## EQUIPMENT

Sprayhood	yes
Cockpit cover	yes
Bimini	(2012)
Winter cover	Over cockpit till the mast (Heinike)
Cockpit table	yes
Bathing platform	yes
Boarding ladder	stainless steel
Deck shower	Cold
Anchor	Fortress
Anchor chain	yes
Anchor 2	S/S
Sea railing	stainless steel
Pushpit	S/S
Pulpit	S/S
TV	yes
Radio-cd player	yes
Fire extinguisher	3x
Latest extinguisher survey	Must be proofed

## RIGGING

Rigging	sloop
Brand mast	Selden



<b>Material mast</b>	aluminum
<b>Spreaders</b>	Double
<b>Mainsail</b>	High Tech Biradial Sandwich
<b>Stoway mast</b>	yes
<b>Genoa</b>	High Tech Biradial Sandwich
<b>Genoa furler</b>	Furlex
<b>Genoa cover</b>	yes
<b>Backstay adjuster</b>	tackle
<b>Boomvang</b>	tackle
<b>Genoa sheetwinches</b>	2x Harken ST two speed
<b>Halyard winches</b>	2x Harken ST two speed
<b>Spi-pole</b>	No
<b>Extra info</b>	Tensioners and lines led to the cockpit.





# BAVARIA 37 C3





# BAVARIA 37 C3



# BAVARIA 37 C3





# BAVARIA 37 C3





# BAVARIA 37 C3





## BAVARIA 37 C3





# BAVARIA 37 C3





# BAVARIA 37 C3





## BAVARIA 37 C3



# BAVARIA 37 C3

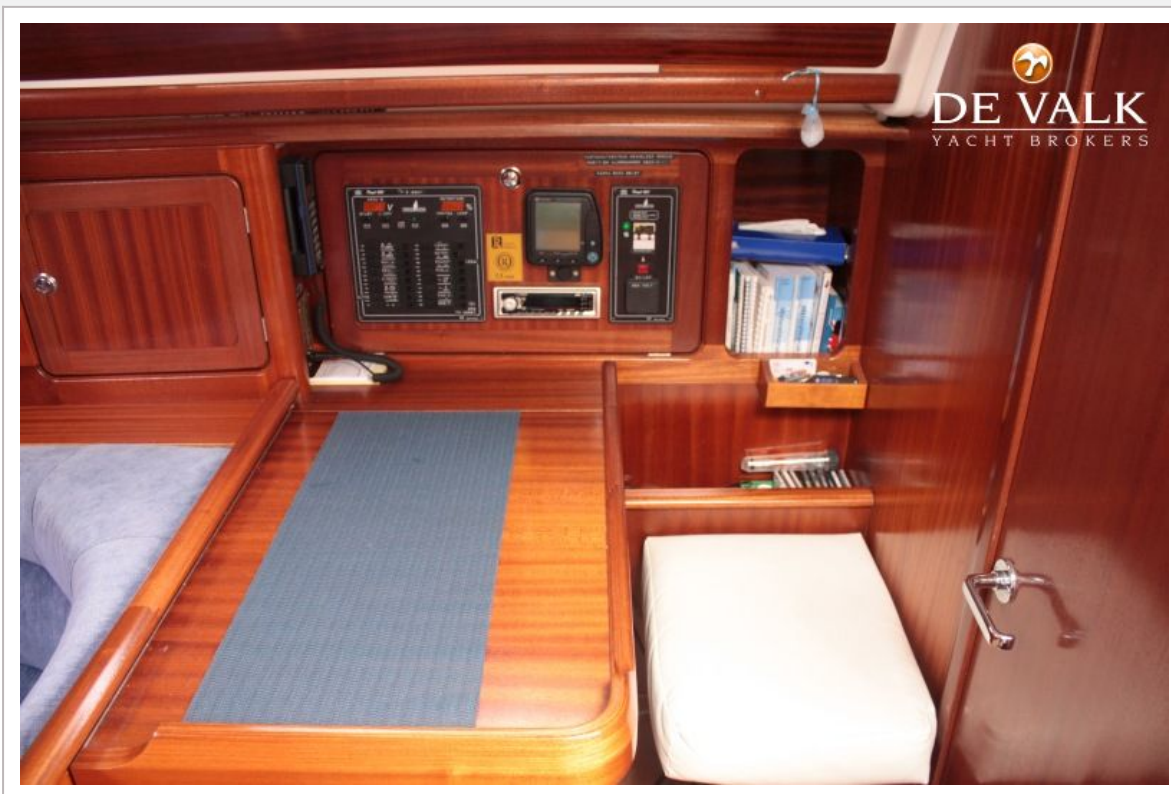




## BAVARIA 37 C3

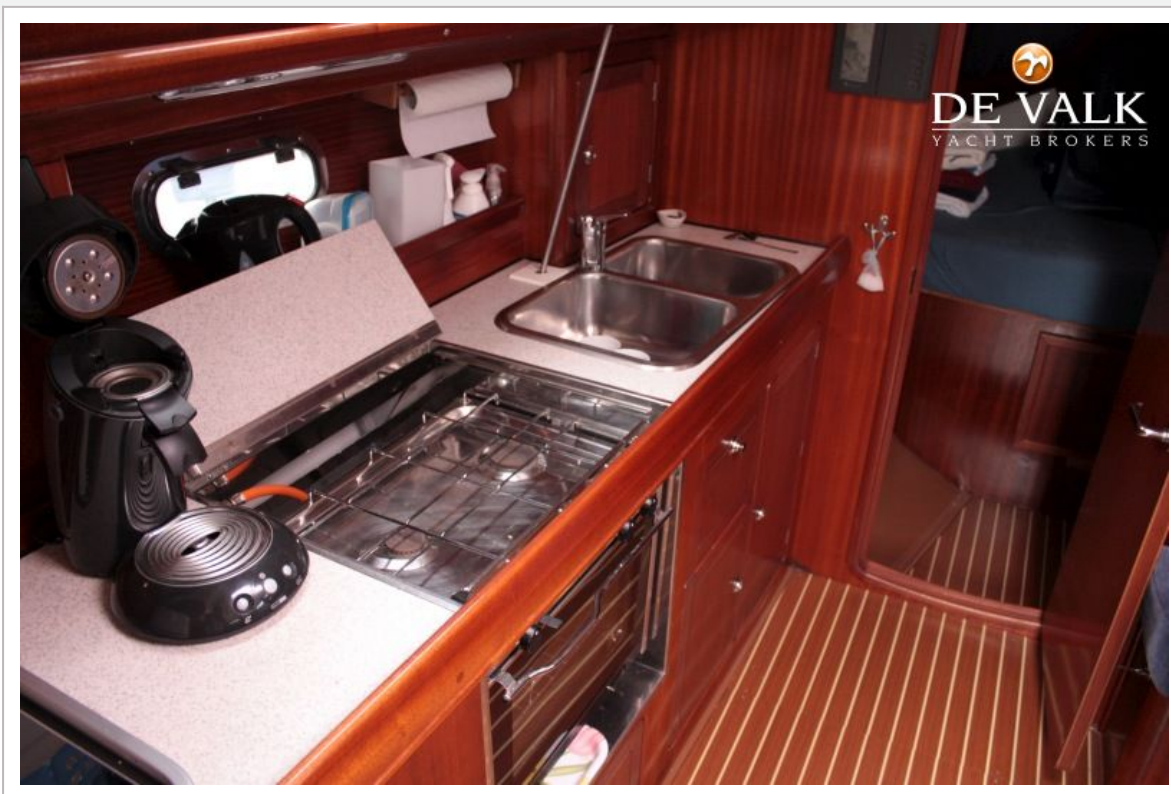


# BAVARIA 37 C3





## BAVARIA 37 C3



## BAVARIA 37 C3



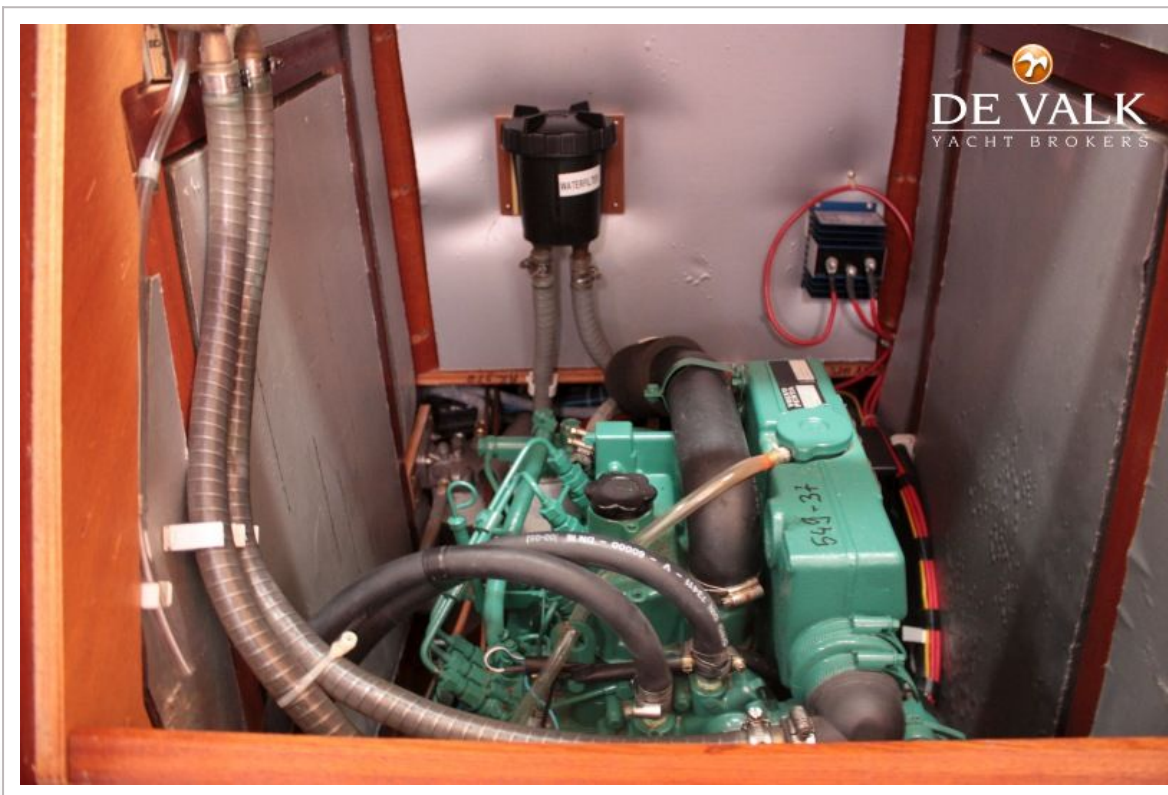


## BAVARIA 37 C3





## BAVARIA 37 C3



## BAVARIA 37 C3





## BAVARIA 37 C3

