



COLIN ARCHER 15.70 KETCH

COLIN ARCHER 15.70 KETCH

BROKER'S COMMENTS

"Deja Vu" designers created a fine combination of excellent sailing characteristics, comfort and classic style. One of the better examples of high quality Dutch yacht building craftsmanship. First owner. Traditional double ender, with a well protected wheelhouse, equipped to take you around in comfort and safety. With generator and electric cooking, she is completely independent of the shore for the time you have fuel. No gas on board.

Reinier van der Wolf

SPECIFICATIONS

Dimensions	17.60 x 4.80 x 1.95 (m)	Builder	Jachtbouw Bronsveen, Woudbloem
Built	2000	Cabins	2
Material	Steel	Berths	6
Engine(s)	1 x Vetus Deutz DT 64473 S diesel	Hp/Kw	159.00 (hp), 116.87 (kw)
Asking price	sold (VAT)	Lying	at sales office

CONTACT

Sales office	De Valk Monnickendam B.V.	Telephone	+31 (0)299 65 63 50
Address	Hoogedijk 6 1145 PM Katwoude NL	E-mail	monnickendam@devalk.nl

DISCLAIMER

These particulars are given in good faith as supplied but cannot be guaranteed.



COLIN ARCHER 15.70 KETCH

GENERAL

Model	COLIN ARCHER 15.70 KETCH
Type	Sailing yacht
LOA (m)	17,60
LWL (m)	15,70
Beam (m)	4,80
Draft (m)	1,95
Air draft (m)	21,50
Headroom (m)	2,20
Year built	2000
Builder	Jachtbouw Bronsveen, Woudbloem
Country	The Netherlands
Displacement (t)	25
Ballast (tonnes)	Lead 5 t.
CE norm	A
Hull material	steel
Hull colour	Black
Hull thickness (mm)	Keel sole 40 mm, first two strokes 8 mm, rest of the hull 6 mm steel. On all rubbing points stainless steel has been used.
Hull shape	Roundbilged
Keel type	Long Keel
Superstructure material	Steel
Superstructure (mm)	5 mm
Deck plate thickness (mm)	5 mm
Deck material	Steel
Deck finish	Anti-slip paint
Cockpit deck finish	Anti-slip paint
Window frame	Aluminum Hora
Window material	Double glazing
Portholes	Brass
Insulation	Foam
Fuel tank (litre)	Steel 2.000 litres - in 2 tanks (below engine)



Freshwater tank (litre)	Steel 2.500 litres - in 1 tank (below saloon)
Greywater tank (litre)	Steel 1.500 litres - in 1 tank (below aftercabin)
Wheel steering	Hydraulic Stazo
Outside helm position	Hydraulic Stazo
Emergency tiller	yes
Extra info	Launched in 2002. Daytank for the diesel heater.

ACCOMMODATION

Cabins	2
Berths	4 (+2)
Interior	Mahogany
Pilot house/deck saloon	With impressive steering postion and cosy settee.
Saloon	With writing desk and galley and lots of storage.
Headroom saloon (m)	2,20 m
Heating	Stove diesel Adriatic by Dickinson
Heating 2	Diesel ducted hot air Eberspaecher D5LC
Galley	U-shaped
Sink	Stainless steel 2x
Cooker	diesel Adriatic by Dickinson
Oven	Adriatic by Dickinson
Microwave	Samsung Combi Vitality CK99FS
Fridge	Coolmatic 110 litres
Hot water system	220v + engine Webasto 60 L Boiler
Water pressure system	Electrical Jabsco sensor-max 14
Owners cabin	Double bed
Bathroom	yes
Toilet	Jabsco
Toilet system	Electric
Wash basin	in the bathroom
Shower	En suite
Guest cabin 1	V-bed



Bathroom	yes
Toilet	yes
Toilet system	Manual Jabsco
Wash basin	at the toilet
Washing machine	AEG 88730 Update
Dryer	AEG Lavatherm T 500
Extra info	No gas on board. An extra bunk berth in forward cabin.

MACHINERY

No of engines	1
Make	Vetus Deutz
Type	DT 64473 S
HP	159,00
kW	116,87
Fuel	diesel
Year installed	2001
Maximum speed (kn)	7,00
Cruising speed (kn)	5,00
Consumption (l/hr)	12
Engine hours	962
Engine cooling system	Hopper cooling
Drive	shaft
Engine controls	Mechanical
Gearbox	Hydraulic
Bowthruster	Hydraulic
Propeller type	Fixed Bronze
Propeller blades	4
Propeller shaft material	Stainless steel
Shaft lubrication	Oilbath
Manual bilge pump	1x
Electric bilge pump	2x RM 69



Electrical installation	12V/24V/220V
Generator	dry exhaust Mitsubishi 13,5 kVA
Start battery	2x 165 Ah (2001)
Service battery	8x - total 740 Ah (2001)
Generator battery	1x 74 Ah (2010)
Battery charger	Mastervolt Mass 24/100
Inverter	Mastervolt Mass Sine 24/2500
Shorepower	With earth leakage breaker
Insulation transformer	yes
Extra info	The Mitsubishi generator of 13,5 kVA has a closed cooling system and a dry exhaust - placed in a sound box.

NAVIGATION

Compass	Suunto D-135 (on outside steeringposition)
Electric compass	Silva Nexus Compass Data
Depth sounder	Silva Nexus Multi Control (in- and outside)
Log	Silva Nexus Multi Control (in- and outside)
Windset	Silva Nexus Wind Data (in- and outside)
VHF	Icom IC-M501EURO + DSC Controller D5-100
Autopilot	Silva nexus (in- and outside)
Radar	Raymarine Pathfinder SL72 Plus
GPS	Silva Nexus GPS Navigator (in- and outside)
Plotter	Toshiba Tecra 510 CDT
Navtex	K41

EQUIPMENT

Cockpit cushions	yes
Boarding ladder	yes
Anchor	Delta 1x 60 kg
Anchor chain	Ca. 100 m (13 mm)
Windlass	Hydraulic Lofrans Titan



COLIN ARCHER 15.70 KETCH

Deck wash	Fresh water
Deck crane	S/S
Sea railing	Stainless steel
Pushpit	S/S
Life raft	Container Lalizas
Life raft (pers)	Container 4
Safety lines on deck	yes
Radar reflector	yes
Spare parts	yes
TV	1 x saloon 1 x aftercabin
Radio-cd player	1 x saloon 1 x aftercabin
Clock - barometer	yes

RIGGING

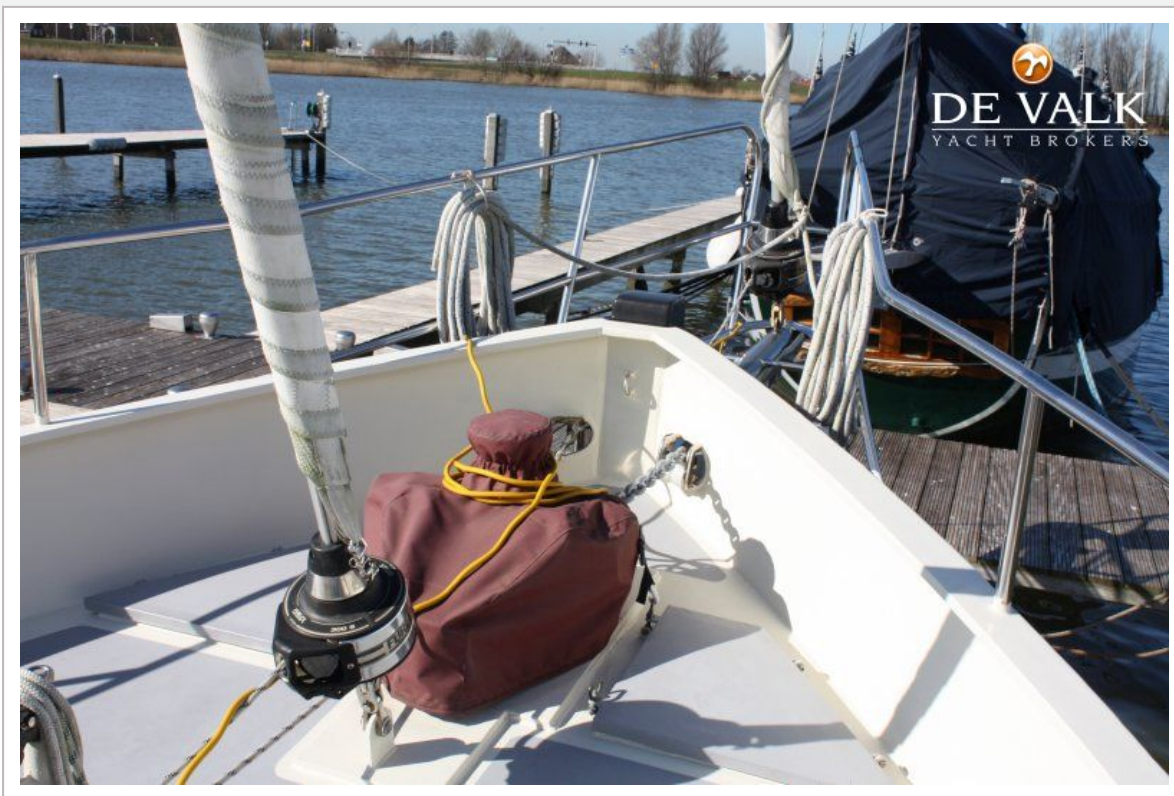
Rigging	Ketch-cutter
Brand mast	Seldén
Material mast	Aluminum
Spreaders	1 x 3 1 x 2
Mainsail	yes
Mainsail cover	yes
Furling boom	Selden
Mizzen	yes
Mizzen sailcover	yes
Genoa furler	Furlex 400 S
Staysail furler	Furlex 300 S
Self tacking jib installation	Rutgerson
Backstay adjuster	yes
Extra info	Running backstay of stainless steel, Anderson winches - all self tailing.



COLIN ARCHER 15.70 KETCH



COLIN ARCHER 15.70 KETCH



COLIN ARCHER 15.70 KETCH



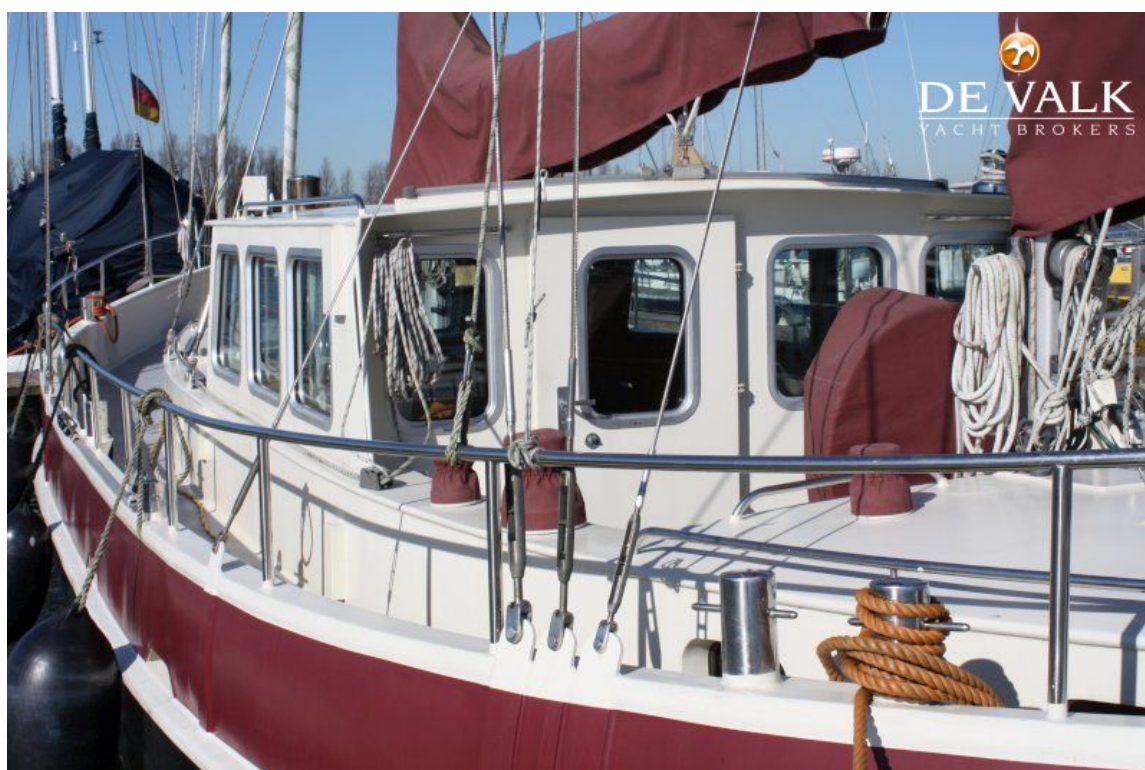
COLIN ARCHER 15.70 KETCH



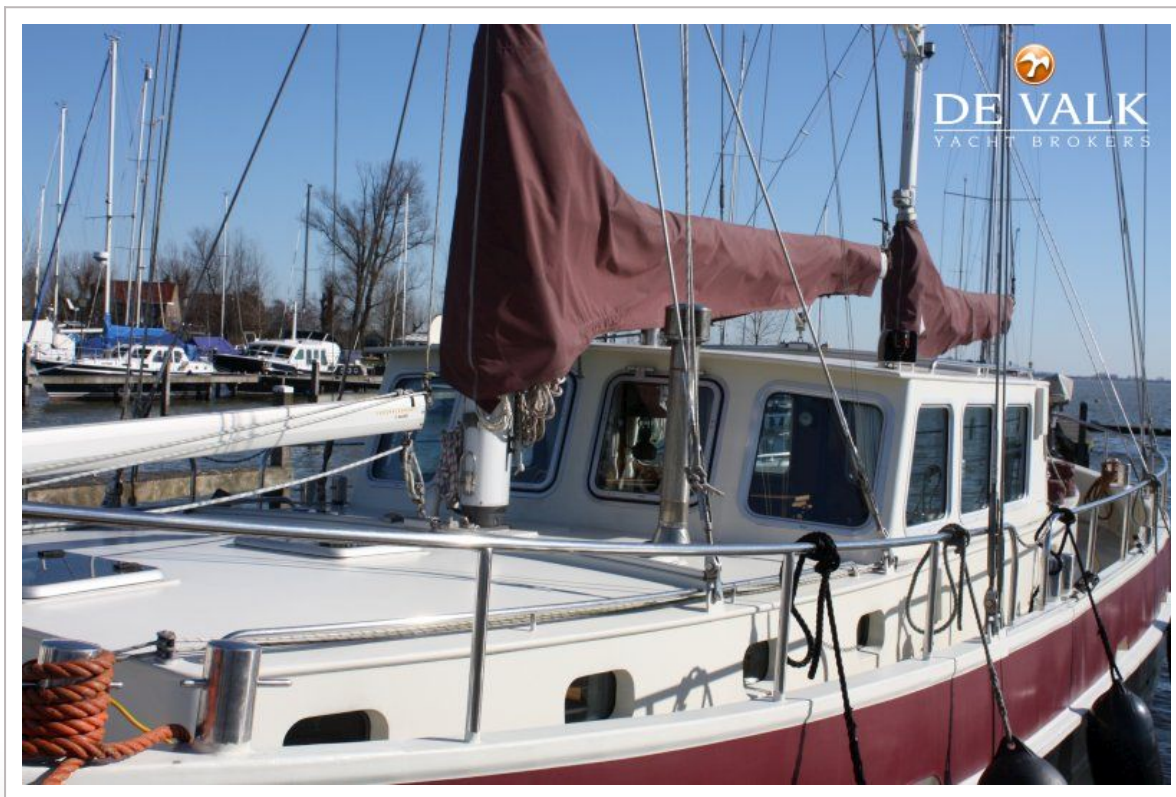
COLIN ARCHER 15.70 KETCH



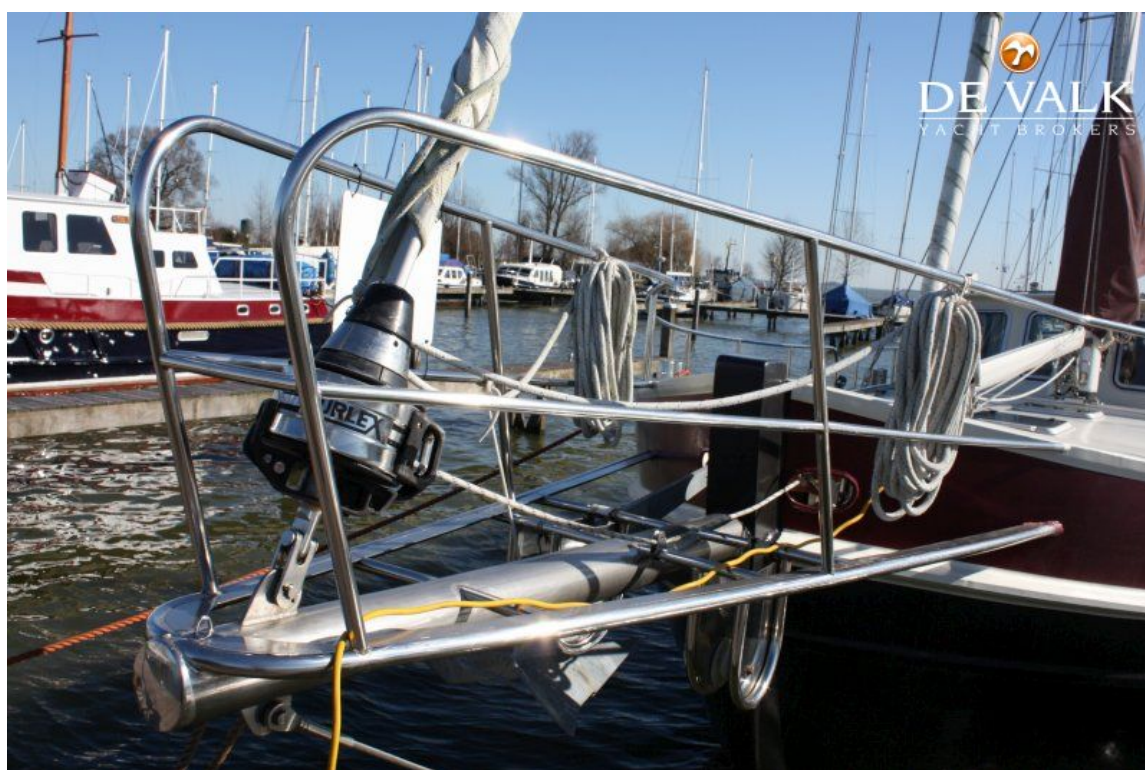
COLIN ARCHER 15.70 KETCH



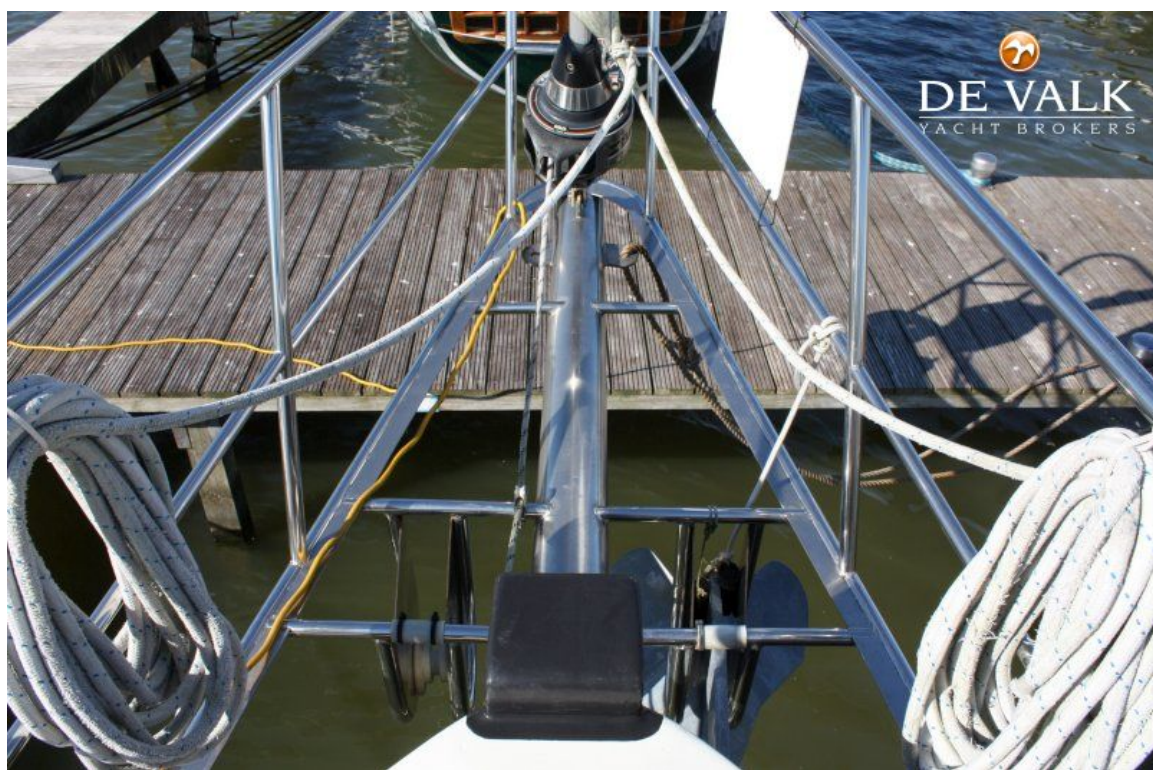
COLIN ARCHER 15.70 KETCH



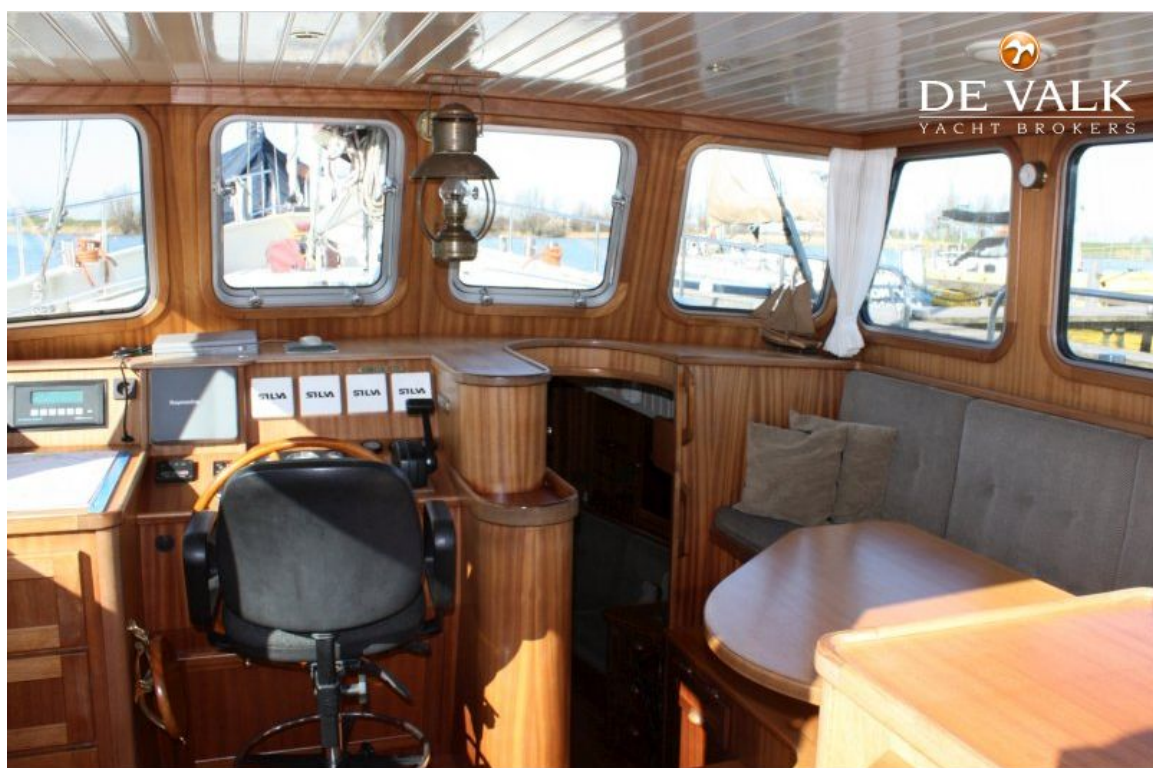
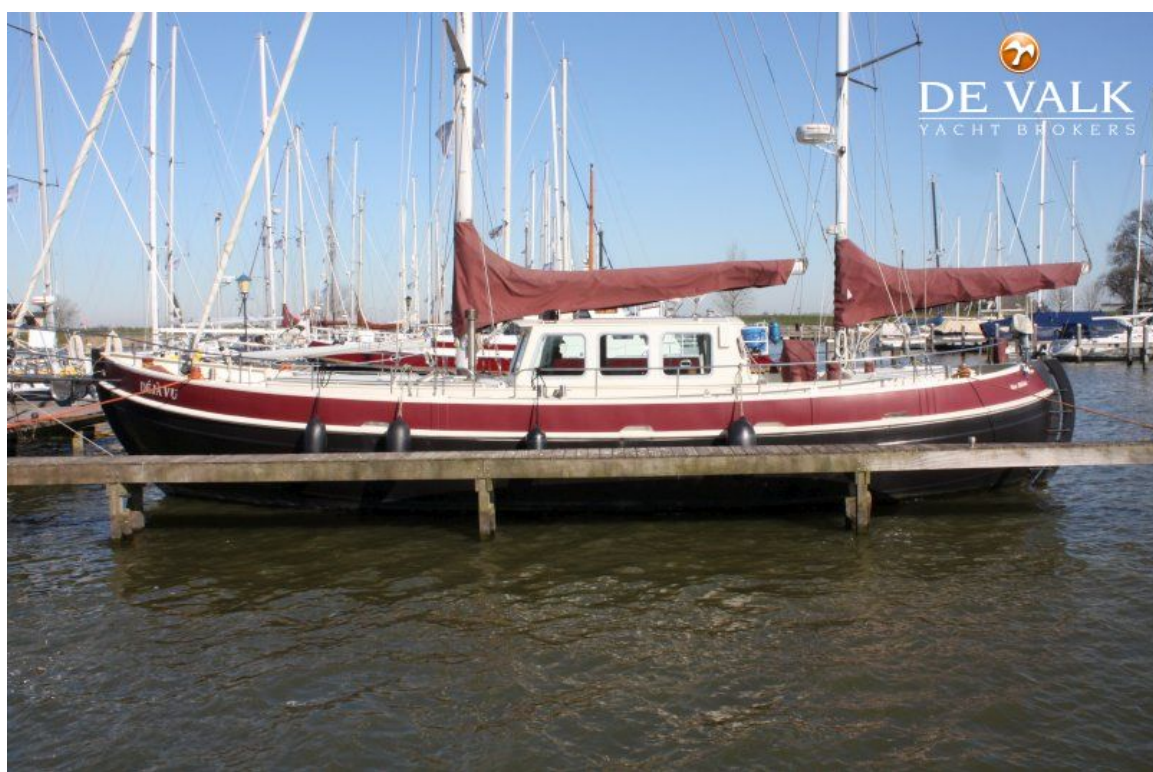
COLIN ARCHER 15.70 KETCH



COLIN ARCHER 15.70 KETCH



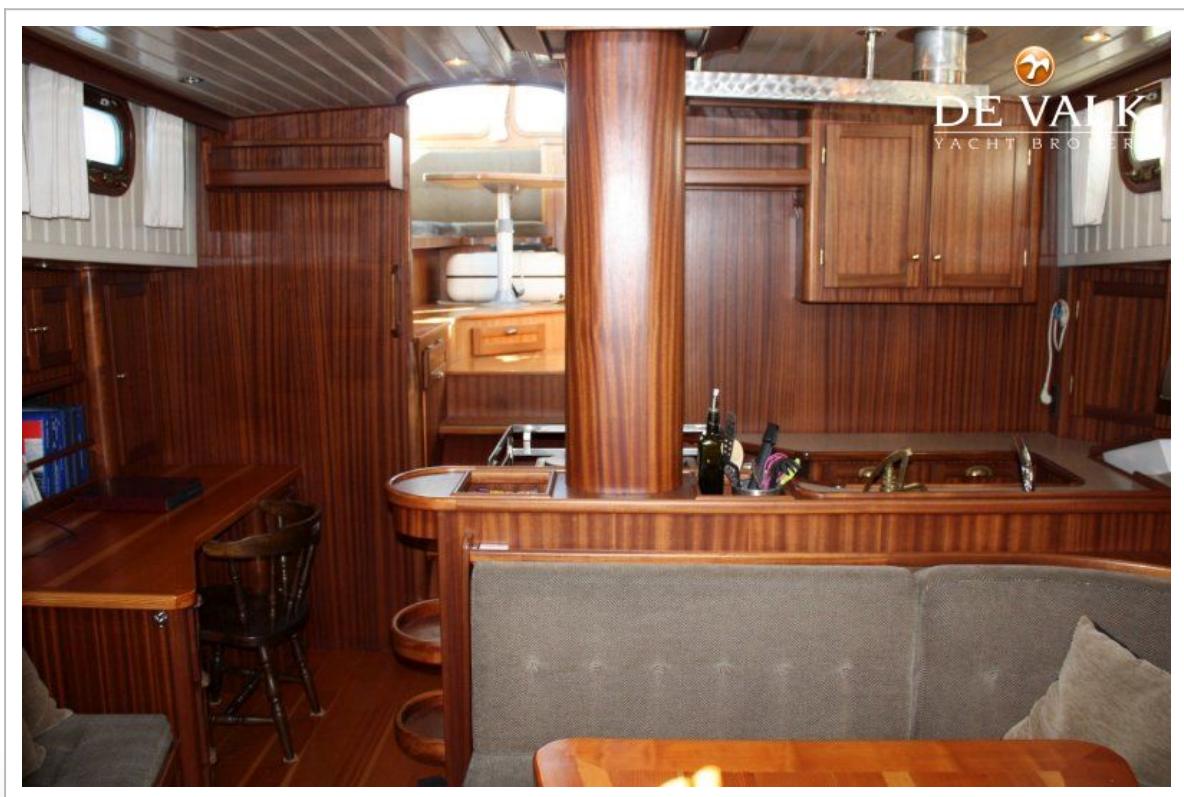
COLIN ARCHER 15.70 KETCH



COLIN ARCHER 15.70 KETCH



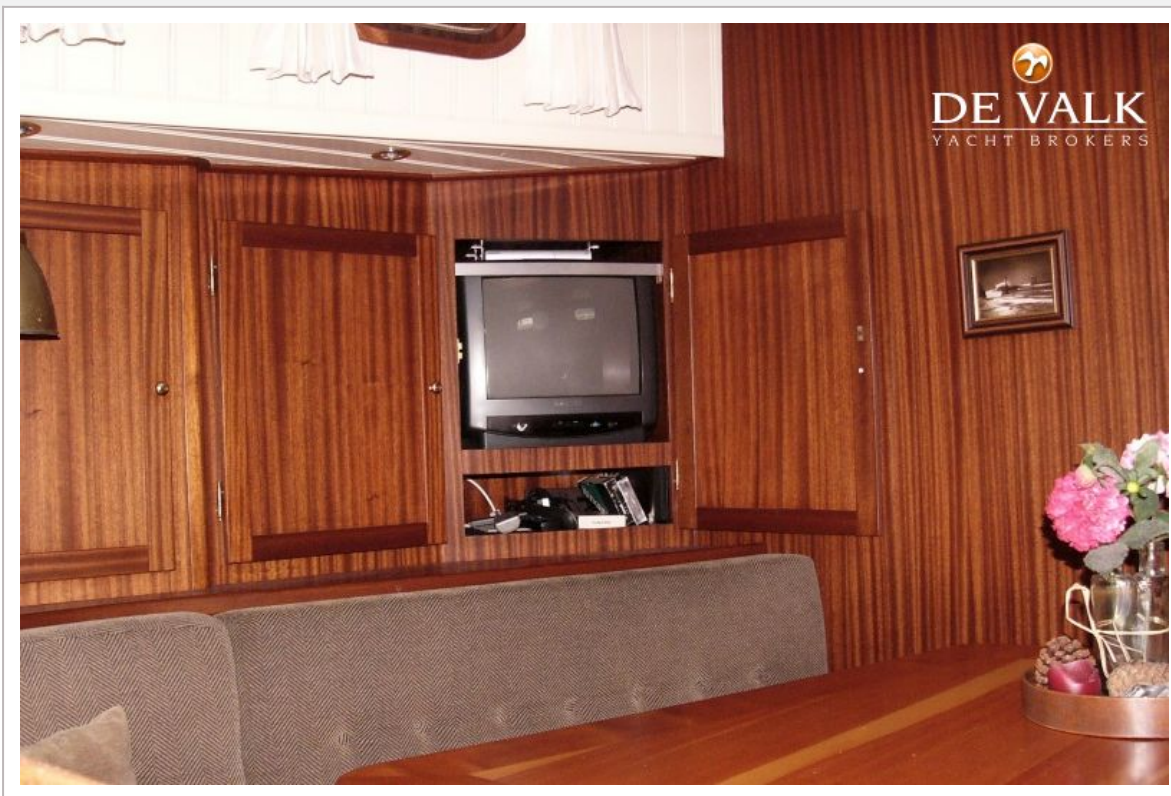
COLIN ARCHER 15.70 KETCH



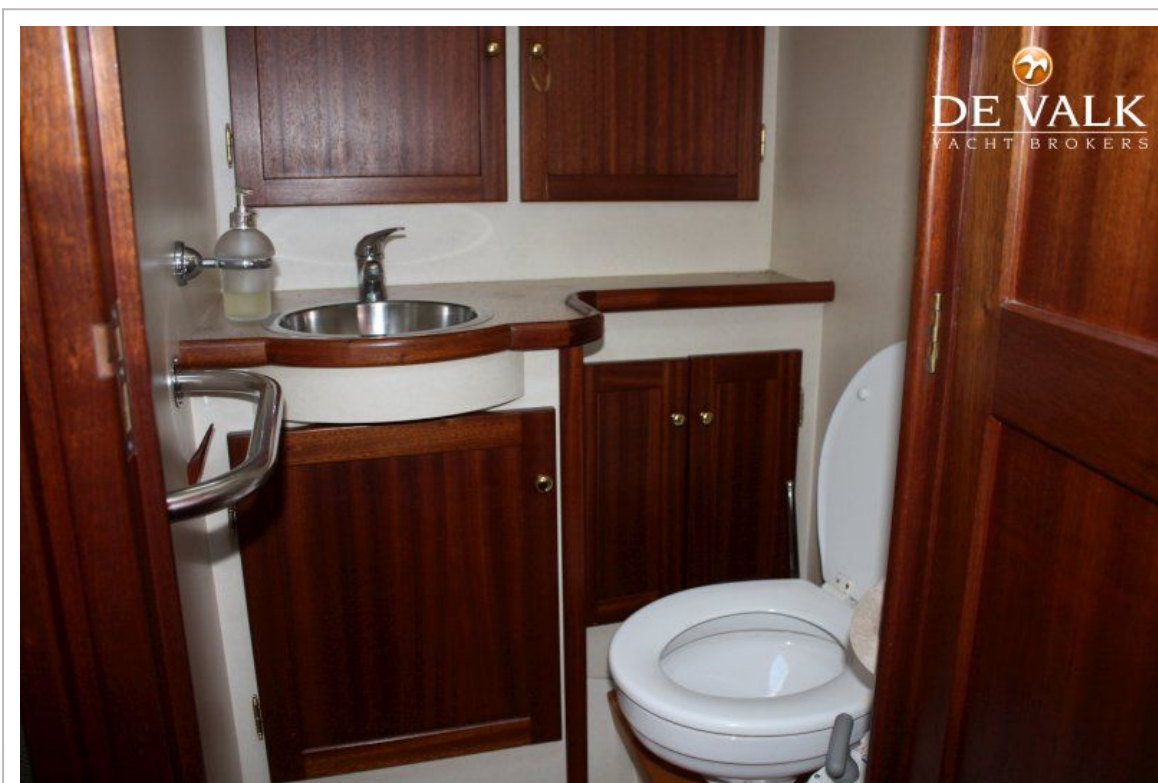
COLIN ARCHER 15.70 KETCH



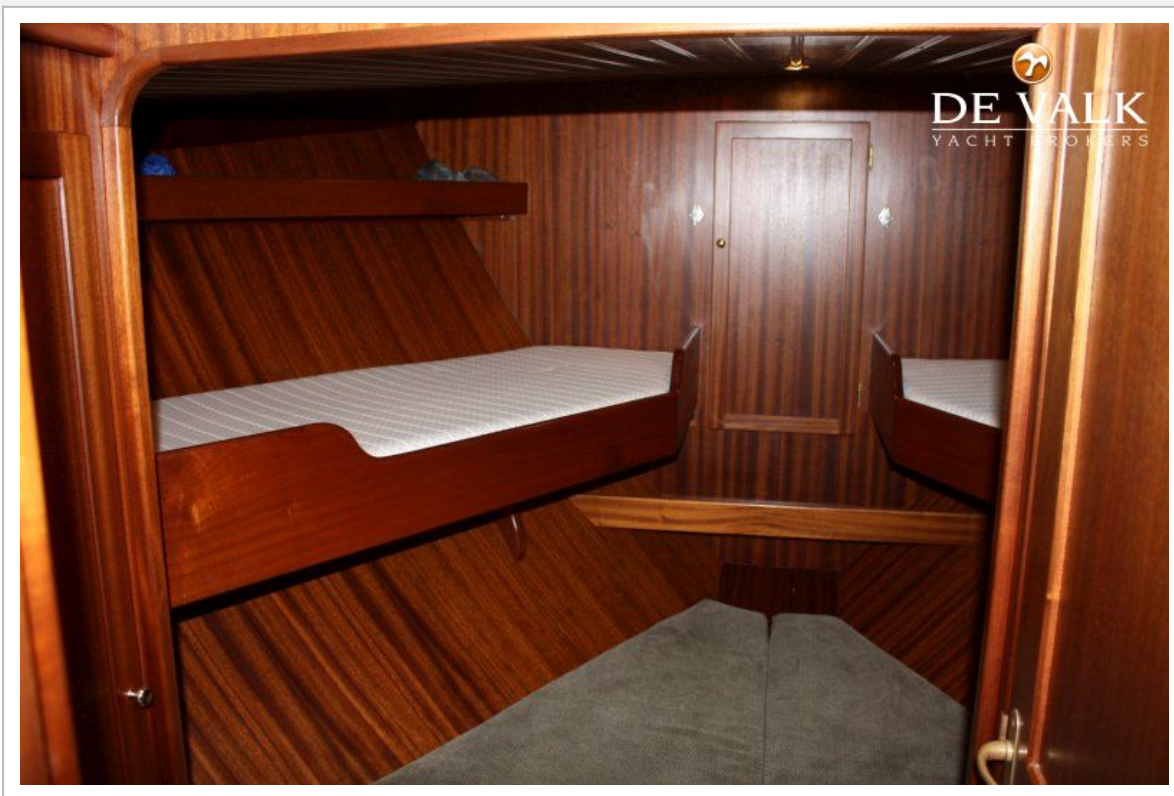
COLIN ARCHER 15.70 KETCH



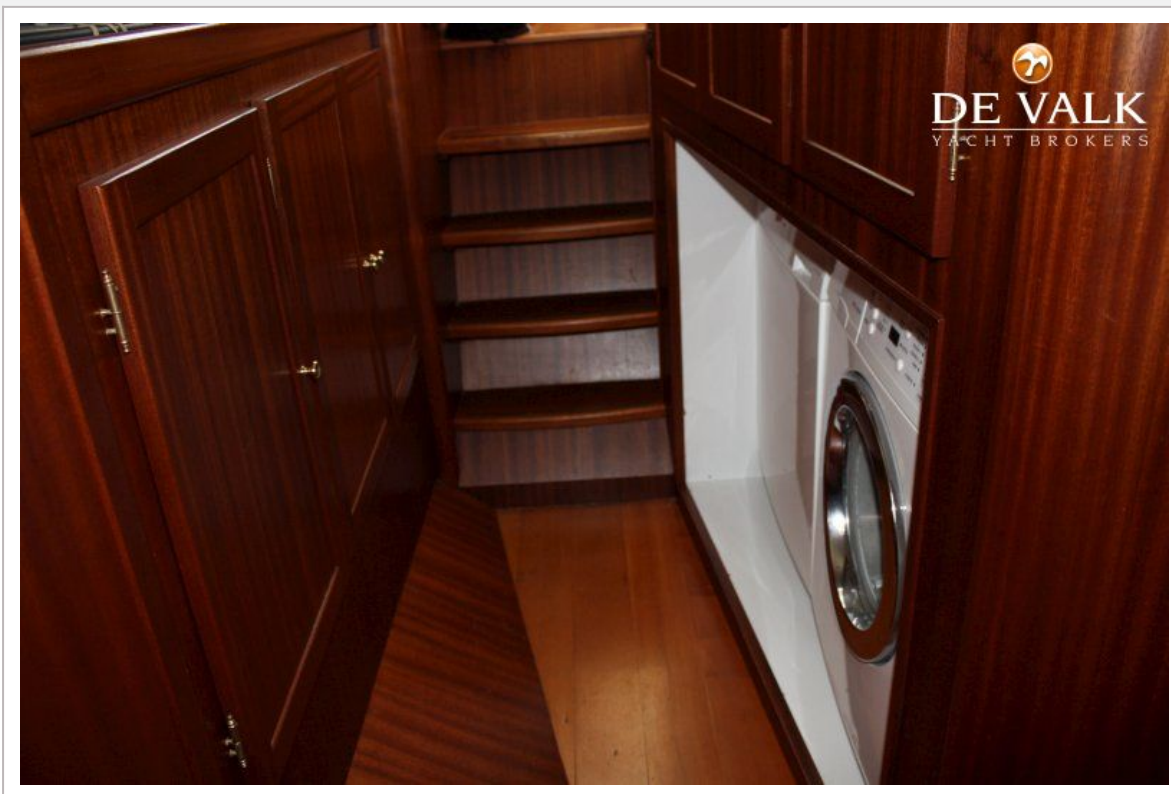
COLIN ARCHER 15.70 KETCH



COLIN ARCHER 15.70 KETCH



COLIN ARCHER 15.70 KETCH



COLIN ARCHER 15.70 KETCH

