



DE VALK  
YACHT BROKERS



BAVARIA 44-3



DE VALK  
YACHT BROKERS

## BROKER'S COMMENTS

The Bavaria 44 is a powerful, capable passage-maker. However her ease of handling makes it a joy to hoist sail for just an hour's cruise around the coast. A luxurious accommodation below with three double cabins makes her an ideal choice for trade wind sailing. With built-in GPS, autopilot and inverter makes life extra easy. Saildrive seal replaced - August 2015.

*Reinier van der Wolf*

## SPECIFICATIONS

<b>Dimensions</b>	13.95 x 4.25 x 1.95 (m)	<b>Builder</b>	Bavaria Yachts GMBH
<b>Built</b>	2003	<b>Cabins</b>	3
<b>Material</b>	GRP	<b>Berths</b>	7
<b>Engine(s)</b>	1 x Volvo Penta D2-55 Diesel	<b>Hp/Kw</b>	55.00 (hp), 40.42 (kw)
<b>Asking price</b>	sold (VAT )	<b>Lying</b>	at sales office

## CONTACT

<b>Sales office</b>	De Valk Monnickendam B.V.	<b>Telephone</b>	+31 (0)299 65 63 50
<b>Address</b>	Hoogedijk 6 1145 PM Katwoude NL	<b>E-mail</b>	monnickendam@devalk.nl

## DISCLAIMER

These particulars are given in good faith as supplied but cannot be guaranteed.



## GENERAL

<b>Model</b>	BAVARIA 44-3
<b>Type</b>	sailing yacht
<b>LOA (m)</b>	13,95
<b>LWL (m)</b>	11,45
<b>Beam (m)</b>	4,25
<b>Draft (m)</b>	1,95
<b>Air draft (m)</b>	18,64
<b>Year built</b>	2003
<b>Builder</b>	Bavaria Yachts GMBH
<b>Country</b>	Germany
<b>Designer</b>	J & J design
<b>Displacement (t)</b>	9,6
<b>Ballast (tonnes)</b>	lead 3
<b>CE norm</b>	A
<b>Hull material</b>	GRP
<b>Hull colour</b>	white
<b>Hull shape</b>	roundbilged
<b>Keel type</b>	fin keel
<b>Superstructure material</b>	GRP
<b>Deck material</b>	GRP
<b>Deck finish</b>	teak
<b>Cockpit deck finish</b>	teak
<b>Antifouling (year)</b>	8-2015
<b>Dorades</b>	yes
<b>Window frame</b>	aluminum Lewmar
<b>Window material</b>	perspex
<b>Fuel tank (litre)</b>	210
<b>Level indicator (fuel tank)</b>	yes
<b>Freshwater tank (litre)</b>	360
<b>Level indicator (freshwater)</b>	yes



Blackwater tank extraction	yes
Greywater tank (litre)	GRP 100
Wheel steering	2x
Emergency tiller	yes
Extra info	Steering wheels covered with leather (8-2015)

## ACCOMMODATION

Cabins	3
Berths	7
Interior	mahogany
Saloon	yes
Heating	Webasto Air Top 5000 (5 kW) + 2 extra outlets
Chart table	yes
Galley	yes
Sink	stainless steel 2x
Cooker	yes
Oven	yes
Microwave	Daewoo
Fridge	12V
Hot water system	220V + engine Heater - 20 L.
Water pressure system	electrical
Owners cabin	double bed
Wardrobe	yes
Bathroom	yes
Toilet	Pump - 08 2015
Toilet system	yes
Wash basin	yes
Shower	+ pump + pump filter
Guest cabin 1	double bed
Wardrobe	yes
Bathroom	yes



<b>Toilet</b>	06- 2013
<b>Toilet system</b>	manual
<b>Wash basin</b>	yes
<b>Shower</b>	+ pump + pump filter
<b>Guest cabin 2</b>	double bed
<b>Wardrobe</b>	yes
<b>Extra info</b>	Owners cabin with slatted base. Refrigerator vaporiser replaced - August 2015.

## MACHINERY

<b>No of engines</b>	1
<b>Make</b>	Volvo Penta
<b>Type</b>	D2-55
<b>HP</b>	55,00
<b>kW</b>	40,42
<b>Fuel</b>	diesel
<b>Year installed</b>	2002
<b>Maximum speed (kn)</b>	7
<b>Engine hours</b>	336
<b>Engine cooling system</b>	Dual circuit
<b>Drive</b>	sail-drive
<b>Engine controls</b>	yes
<b>Bowthruster</b>	electric
<b>Propeller type</b>	folding
<b>Manual bilge pump</b>	yes
<b>Electric bilge pump</b>	yes
<b>Electrical installation</b>	12v/220v
<b>Start battery</b>	1x
<b>Service battery</b>	2x
<b>Bowthruster battery</b>	1x
<b>Battery charger/inverter</b>	Mastervolt 2500W/100 Ah



<b>Shorepower</b>	yes
<b>Extra info</b>	Saildrive seal renewed August 2015. Engine service - August 2015. Fixed propeller as spare.

## NAVIGATION

<b>Compass</b>	2x
<b>Depth sounder</b>	Raymarine ST60
<b>Log</b>	Raymarine ST60
<b>Windset</b>	Raymarine ST60 + close hauled
<b>VHF</b>	Furuno FM2721 + Atis + connection cockpit
<b>Autopilot</b>	Raymarine ST6001, incl. rudderindicator
<b>Radar</b>	Raymarine + mast
<b>GPS</b>	Raymarine Raynav300
<b>Radio receiver</b>	Icom SSB
<b>Searchlight</b>	yes
<b>Extra info</b>	PC with MaxSea nav. program + LCD screen, Cresta weather station, extra stainless steel bow plate, four stainless steel bollards.

## EQUIPMENT

<b>Sprayhood with grab rail</b>	Sprayhood - August 2015, grabrail covered with leather (August -2015. 8 - 2015
<b>Cockpit cover</b>	8 - 2015
<b>Bimini</b>	yes
<b>Cockpit table</b>	yes
<b>Bathing platform</b>	yes
<b>Boarding ladder</b>	stainless steel
<b>Deck shower</b>	hot/cold
<b>Anchor</b>	CQR Plough
<b>Anchor chain</b>	50 m - 10 mm
<b>Windlass</b>	electrical
<b>Sea railing</b>	stainless steel



Pushpit	S/S
Pulpit	S/S
Life raft	RFD
Life raft (pers)	6
Last life raft survey	2006
Safety lines on deck	yes
TV	yes
Radio-cd player	Blaupunkt
DVD player	on LCD screen
Speakers in salon	yes
Fire extinguisher	3x
Latest extinguisher survey	must be checked
Extra info	yes

## RIGGING

Rigging	sloop
Brand mast	yes
Material mast	aluminum
Mainsail	Bi-radial laminate 42,6 m2
Stoway mast	Selden
Genoa	Hagoort bi-radial laminate 57,6 m2 (2016)
Genoa furler	Furlex
Genoa cover	"Easyreef"
Boomvang	Selden Rodkicker
Primary sheet winch	2x Harken 48ST
Halyard winches	2x Harken 40ST
Spi-pole	yes
Extra info	Spi halyard with connection on mast (no spi available).



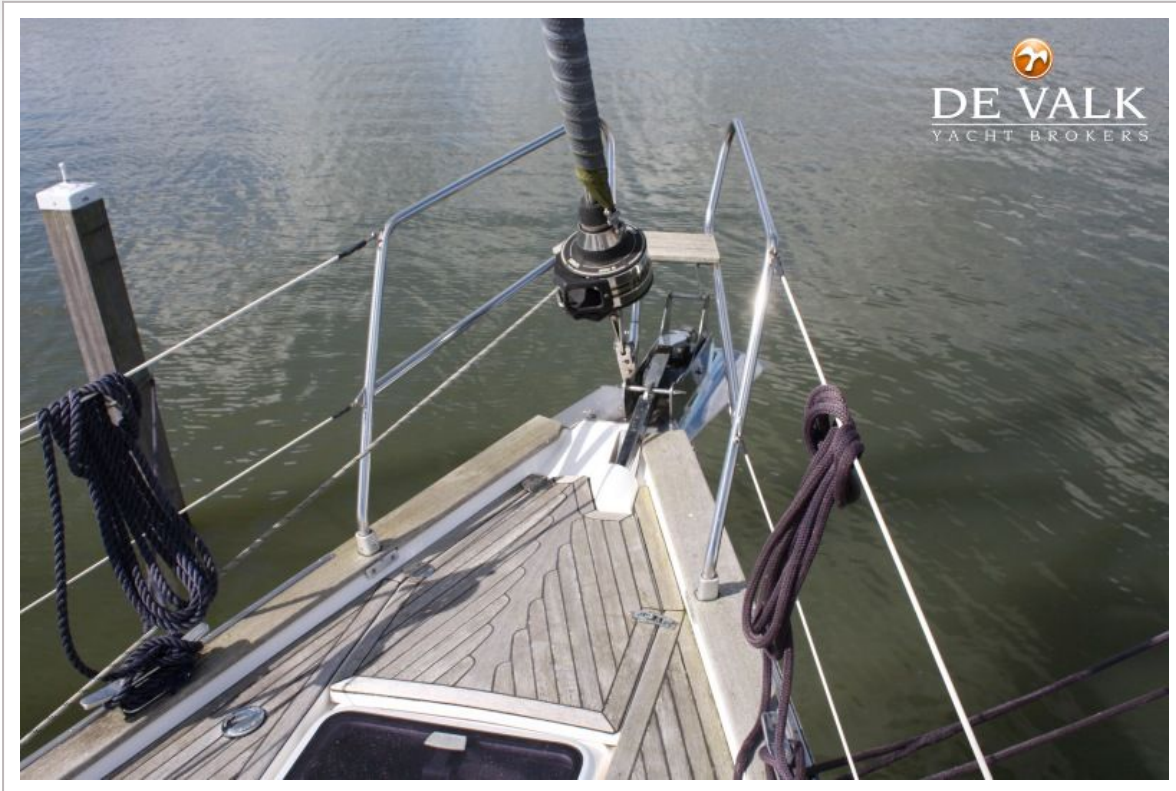
# BAVARIA 44-3







# BAVARIA 44-3



# BAVARIA 44-3



# BAVARIA 44-3



# BAVARIA 44-3



# BAVARIA 44-3



# BAVARIA 44-3



# BAVARIA 44-3





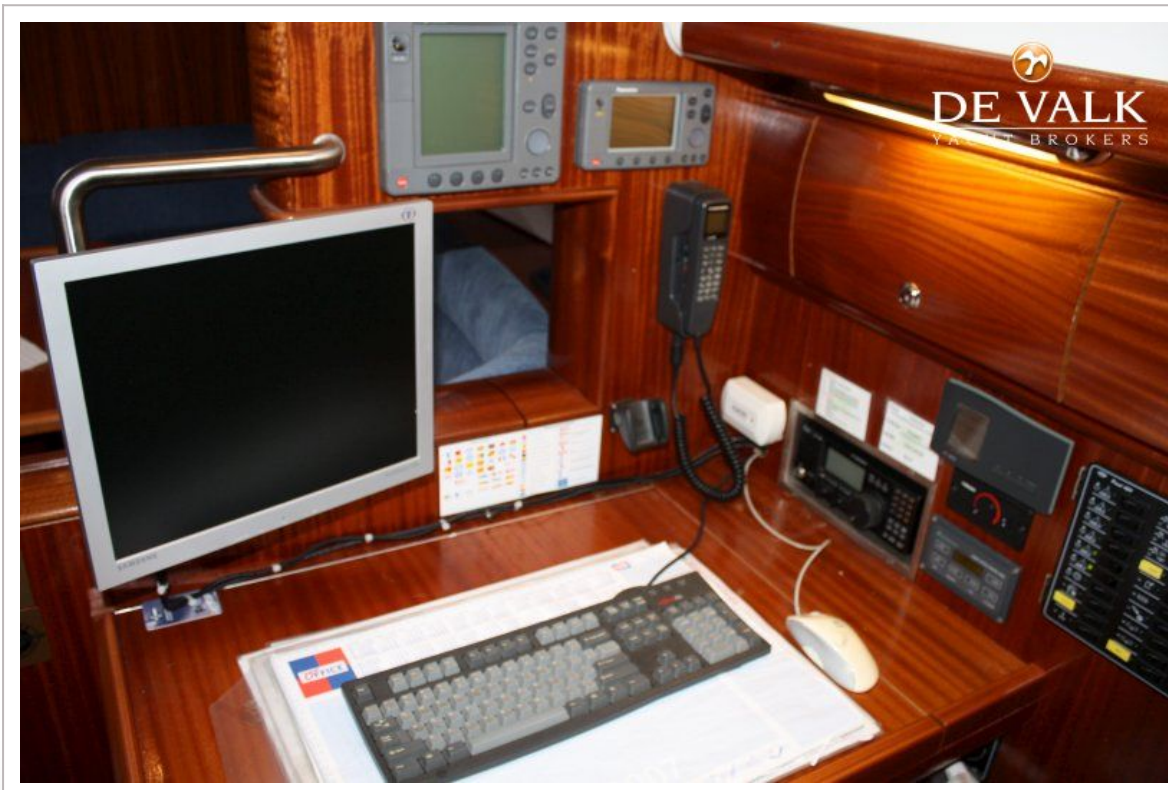
# BAVARIA 44-3



# BAVARIA 44-3

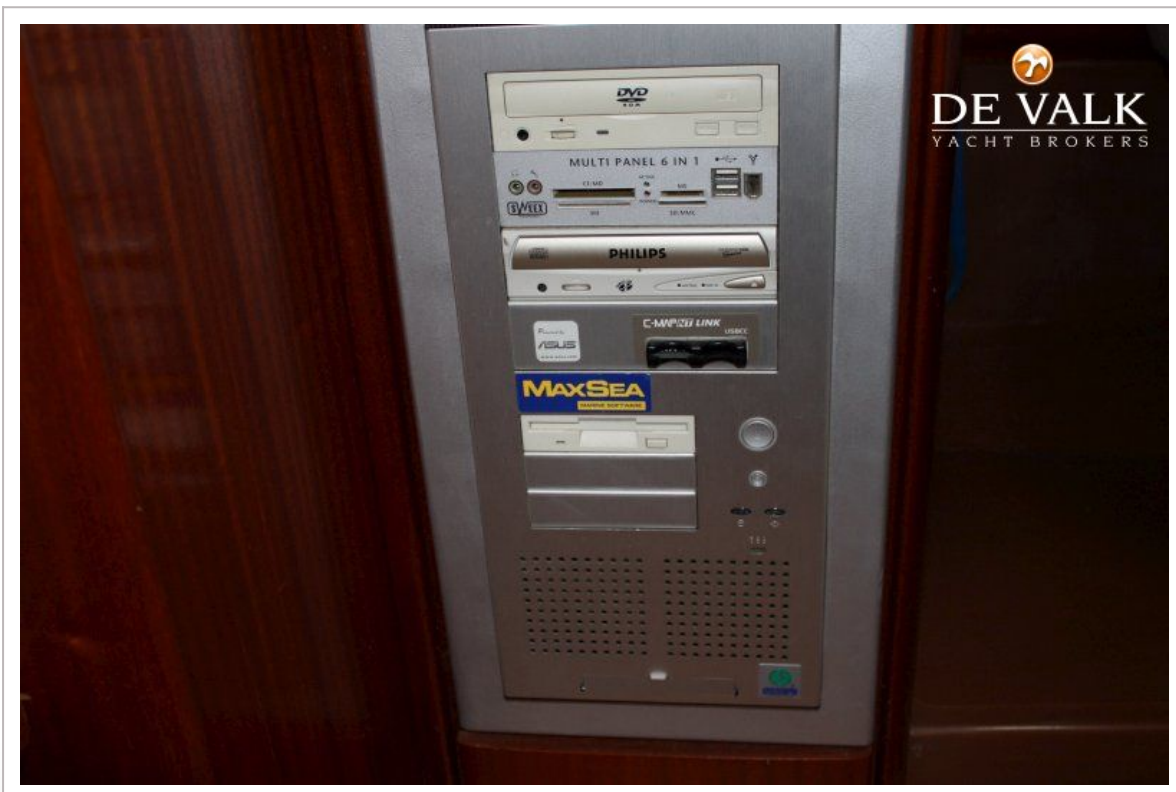


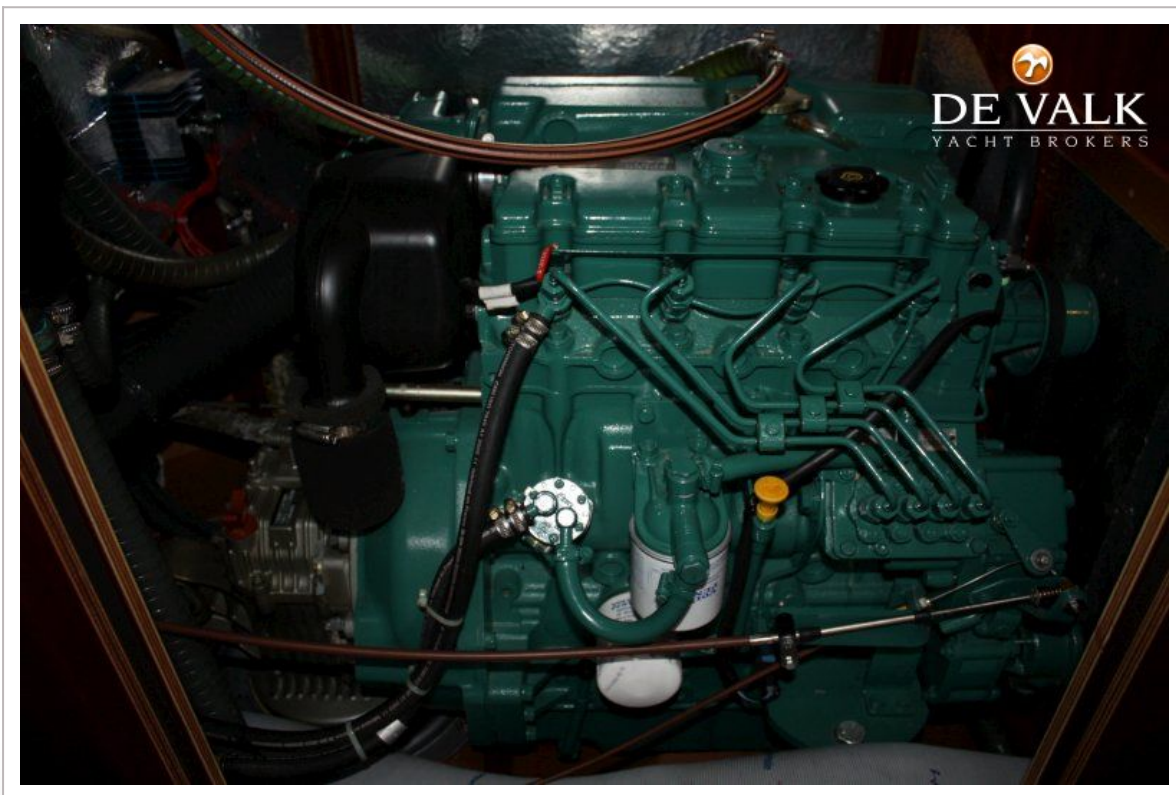
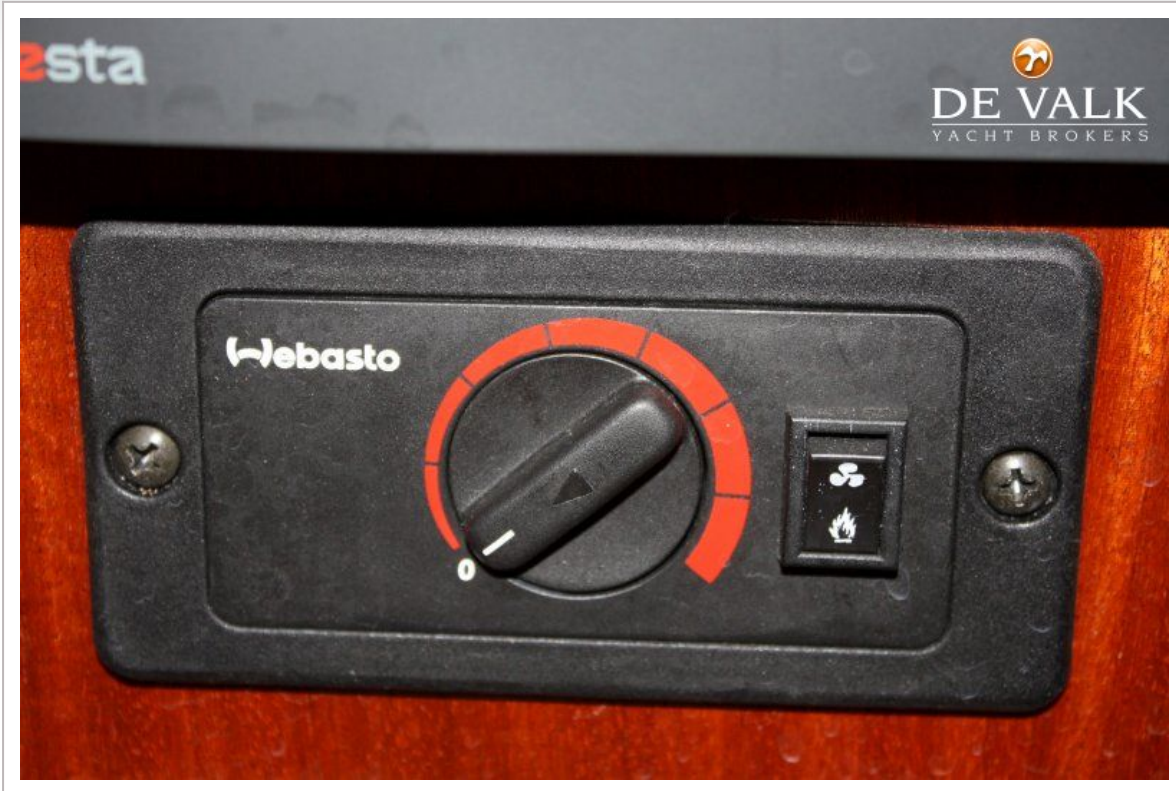
# BAVARIA 44-3











# BAVARIA 44-3

