



FIGEE STEILSTEVEN

BROKER'S COMMENTS

SO99, build by the famous Figee boatyard as a fast going oil tanker formally known as the 'Esso Holland 99' where she used to supply the oil depots. Nowadays, she has been converted into a spacious and comfortable motor vessel for life aboard or cruising through the European inland waterways. With her two cabins in the front she offers 4 berths, a galley with cooking facilities, and on the colder days the stove keeps the ship comfortably warm. The SO99 can be seen in our sales marina 7 days a week.

Reinier van der Wolf

SPECIFICATIONS

Dimensions	20.43 x 3.70 x 1,30 / 1.40 (m)	Builder	Werf Gebr. J.S. Figee, Vlaardingen
Built	1948	Cabins	2
Material	Steel	Berths	4
Engine(s)	1 x DAF DD 575 M diesel	Hp/Kw	85.00 (hp), 62.48 (kw)
Asking price	sold (VAT)	Lying	at sales office

CONTACT

Sales office	De Valk Monnickendam B.V.	Telephone	+31 (0)299 65 63 50
Address	Hoogedijk 6 1145 PM Katwoude NL	E-mail	monnickendam@devalk.nl

DISCLAIMER

These particulars are given in good faith as supplied but cannot be guaranteed.



GENERAL

Model	FIGEE STEILSTEVEN
Type	motor yacht
LOA (m)	20,43
LWL (m)	16,00
Beam (m)	3,70
Draft (m)	1,40
Draft min (m)	1,30
Air draft (m)	2,60
Headroom (m)	2,00
Year built	1948
Launched	12 - 8 - 1948
Builder	Werf Gebr. J.S. Figee, Vlaardingen
Country	The Netherlands
Designer	Figee
Displacement (t)	40
Ballast (tonnes)	Lead/concrete
Hull material	steel
Hull colour	black
Hull shape	round-bilged
Superstructure material	steel
Rubbing strake	yes
Deck material	steel
Deck finish	non-skid paint
Superstructure deck finish	non-skid paint
Cockpit deck finish	non-skid paint
Antifouling (year)	2014
Dorades	in hatches
Window frame	Aluminium/magogany/wood
Window material	Double glazing/tempered glass
Portholes	Magogany/aluminium



Insulation	rockwool Foam +
Mast can be lowered	manual
Fuel tank (litre)	steel 950
Fuel tank 2 (litre)	steel 950
Level indicator (fuel tank)	Sight gauges
Freshwater tank (litre)	stainless steel 2x 180
Blackwater tank (litre)	stainless steel 500
Blackwater tank extraction	deck extraction + pump
Wheel steering	hydraulic
Inside helm position	yes
Emergency tiller	with hydraulic by-pass

ACCOMMODATION

Cabins	2
Berths	4
Interior	oak
Floor	Oak
Pilot house	yes
Saloon	yes
Headroom saloon (m)	1,90
Heating	stove coal Multi-fuel cast iron 8kW
Heating 2	electric 220V Portable 3kW storage heater
Galley	yes
Countertop	wood Oak
Sink	stainless steel
Cooker	calor gas 4 hob grill
Oven	yes
Gas alarm	yes
Microwave	yes
Fridge	yes
Hot water system	220V + engine



Water pressure system	electrical 24v flowjet with accumulator tank
Coffee maker	yes
Crockery	yes
Owners cabin	double bed
Bed length (m)	2.00
Wardrobe	hanging/drawers/shelves
Bathroom	shared
Toilet	shared
Toilet system	electric
Wash basin	at the toilet
Shower	shared
Guest cabin 1	twin single
Wardrobe	drawers

MACHINERY

No of engines	1
Make	DAF
Type	DD 575 M
HP	85
kW	62.48
Fuel	diesel
Year installed	2002
Maximum speed (kn)	9
Consumption (l/hr)	2,5
Engine hours	2170
Engine cooling system	closed keelcooling Blockland 165/200
Drive	shaft
Engine controls	yes
Gearbox	hydraulic ZF BW 3oV
Bowthruster	electric Vetus, 160 kgf 250mm
Exhaust	dry



Thrust bearing	yes
Propeller type	fixed
Propeller blades	3
Propeller shaft material	steel
Shaft lubrication	water
Manual bilge pump	yes
Electric bilge pump	2x Johnson
Generator	dry exhaust 6.5kW 240v (not checked)
Running hours generator	as new 100
Batteries	24v
Start battery	2x 180 Ah 24v
Service battery	4x 180 Ah 24v
Generator battery	1x 40 Ah 12v
Bowthruster battery	2x 180Ah 24v
Battery monitor	Victron MBV 600
Battery charger	3Kva 2nd alternator main engine drive
Battery charger/inverter	Sterling pro-combi sinewave 3000VA
Solar panel	3x 250W fixed panels on pilot house roof 24v
Diode battery combiners	Sterling prosplit R
Shorepower	with cable With 1:1 isolator transformer

NAVIGATION

Depth sounder	yes
VHF	Standard horizon GX2000e with ATIS
Rudder angle indicator	yes
GPS	Garmin GPS Map 192c
Plotter	yes
Personal computer	yes
Electronis chart(s)	On PC
AIS receiver	yes
Radio receiver	yes



Navigation lights	yes
Searchlight	Handheld and rechargeable

EQUIPMENT

Fixed windscreen	yes
Dodger	Foredeck spray cover
Sun awning	Complete cockpit stainless steel frame and canvas top
Cockpit cushions	yes
Boarding ladder	stainless steel
Bow ladder	Collapsible stowed in forepeak
Gangway	Stowed on deck
Anchor	Danforth
Anchor chain	50m (12mm)
Anchor 2	Pool
Windlass	manual Strikwerda 2 speed with warp drum
Deck wash	Cockpit hose connection 24v
Sea railing	yes
Grab rail (superstructure)	steel
Lifejackets	yes
Lifebuoy	yes
Danbuoy	yes
Horn	electric
Fenders	yes
Mooring lines	yes
Spare parts	yes
Fire extinguisher	yes
Extinguisher in engine room	yes
Extra info	Manual deck crane





FIGEE STEILSTEVEN



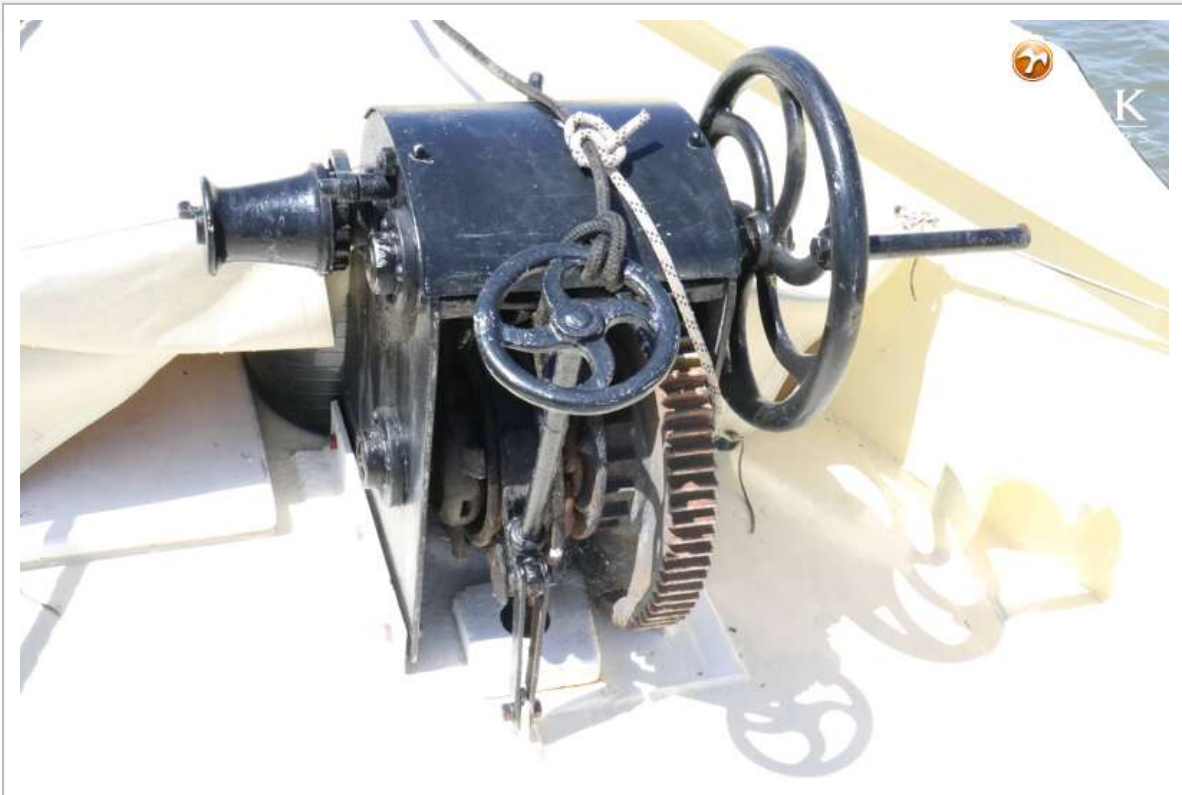
FIGEE STEILSTEVEN



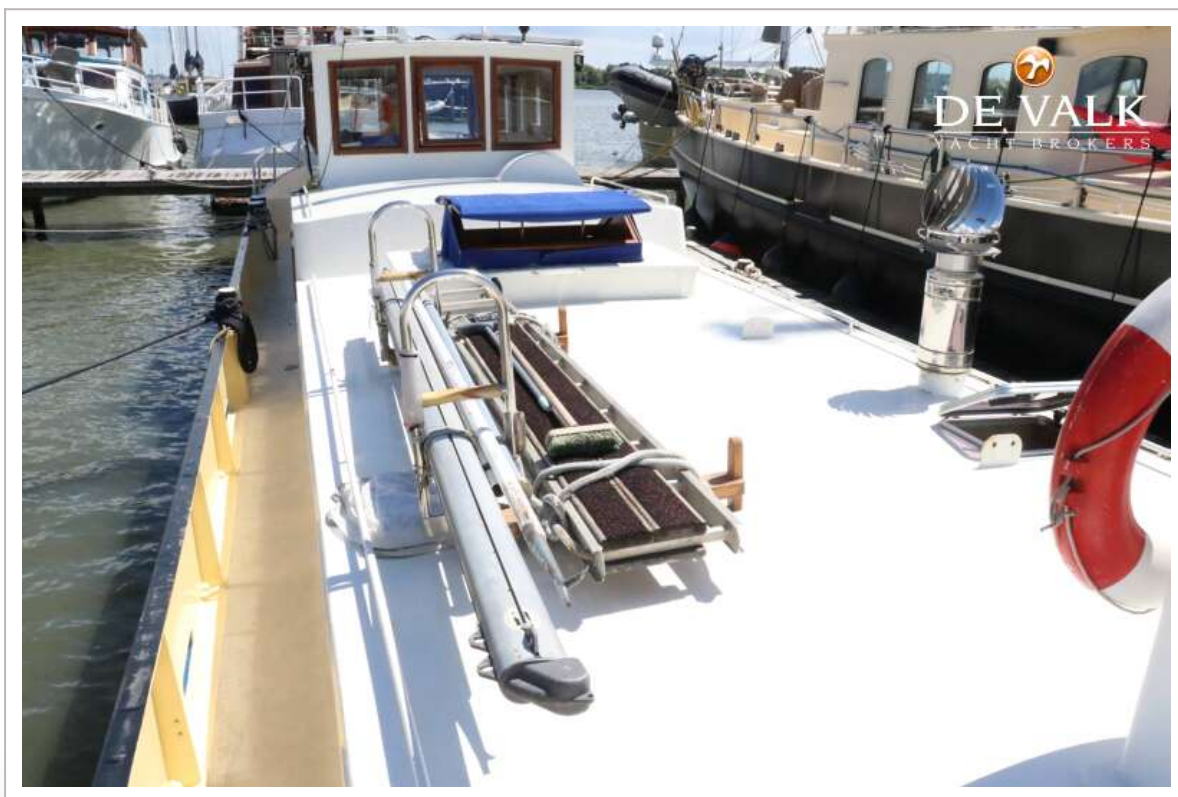
FIGEE STEILSTEVEN



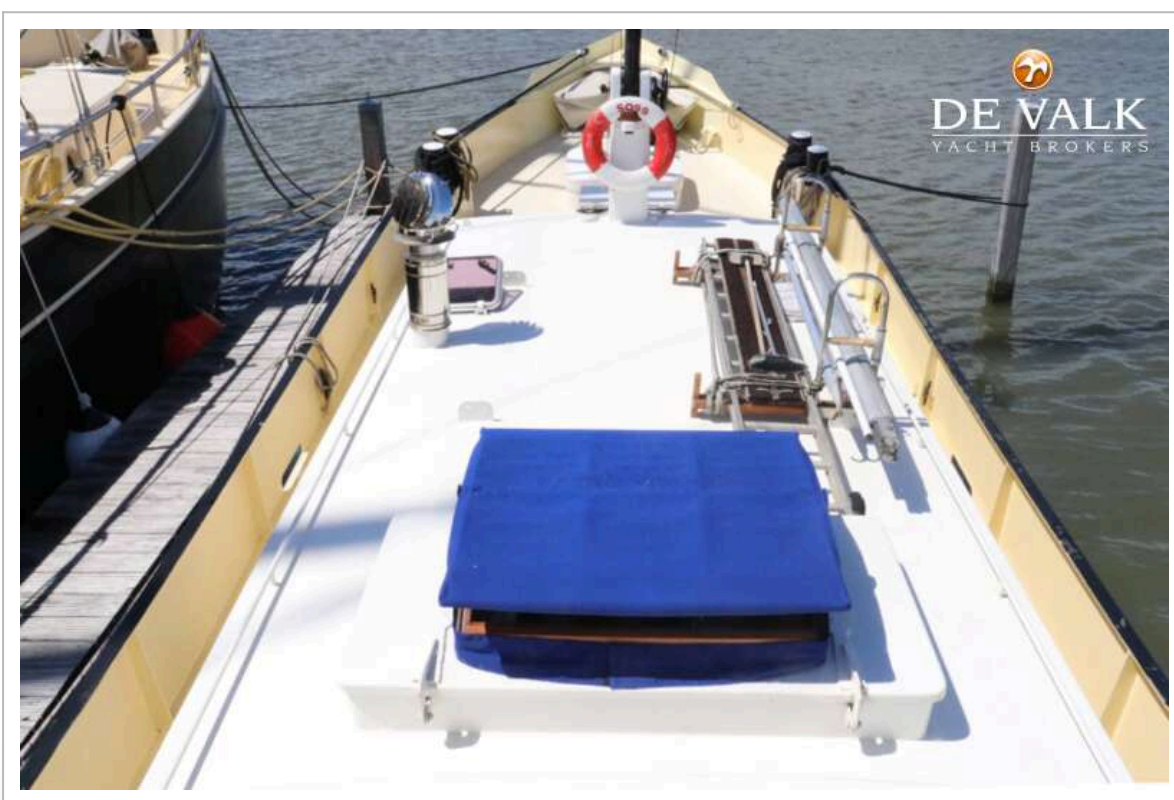
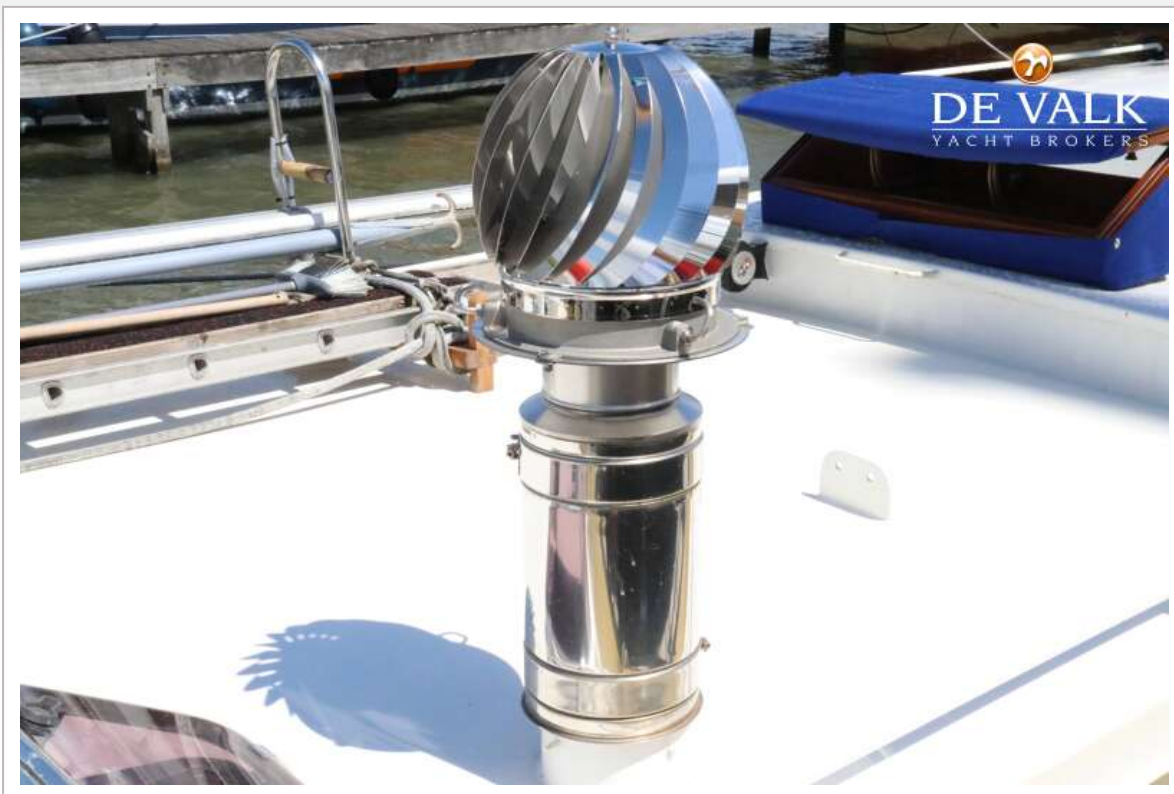
FIGEE STEILSTEVEN

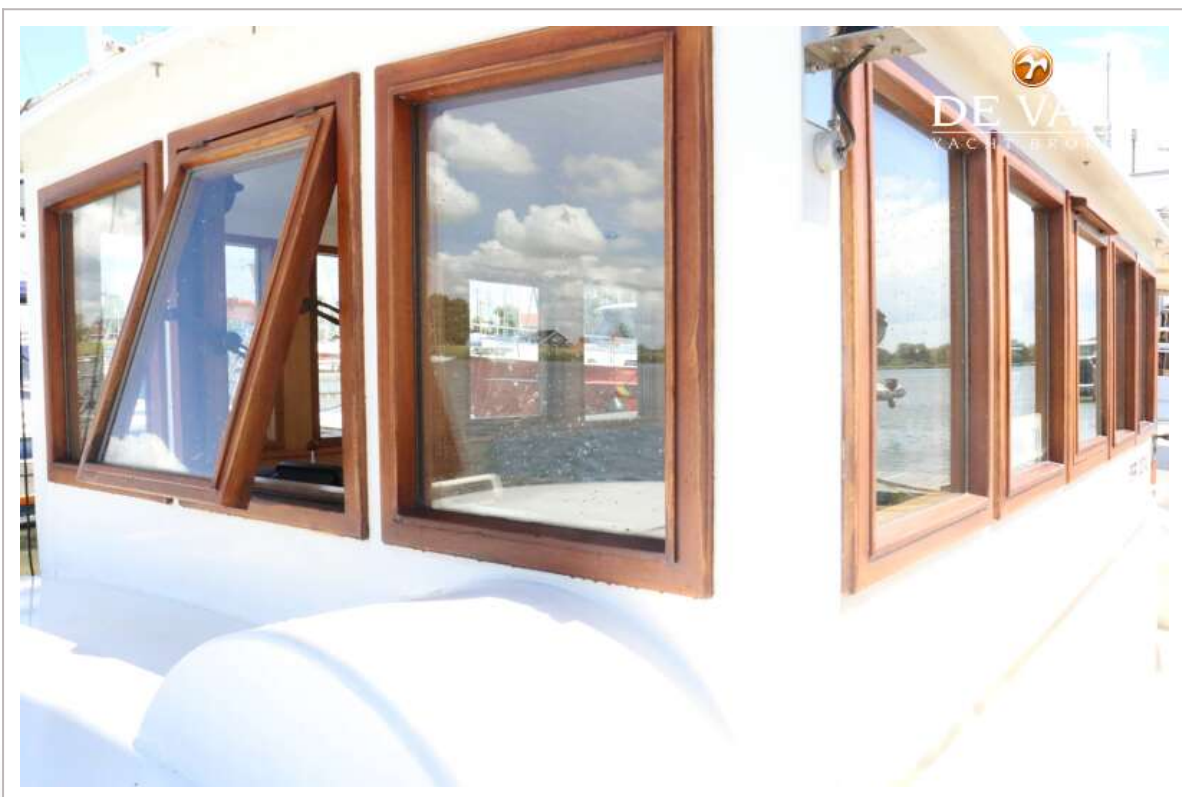


FIGEE STEILSTEVEN

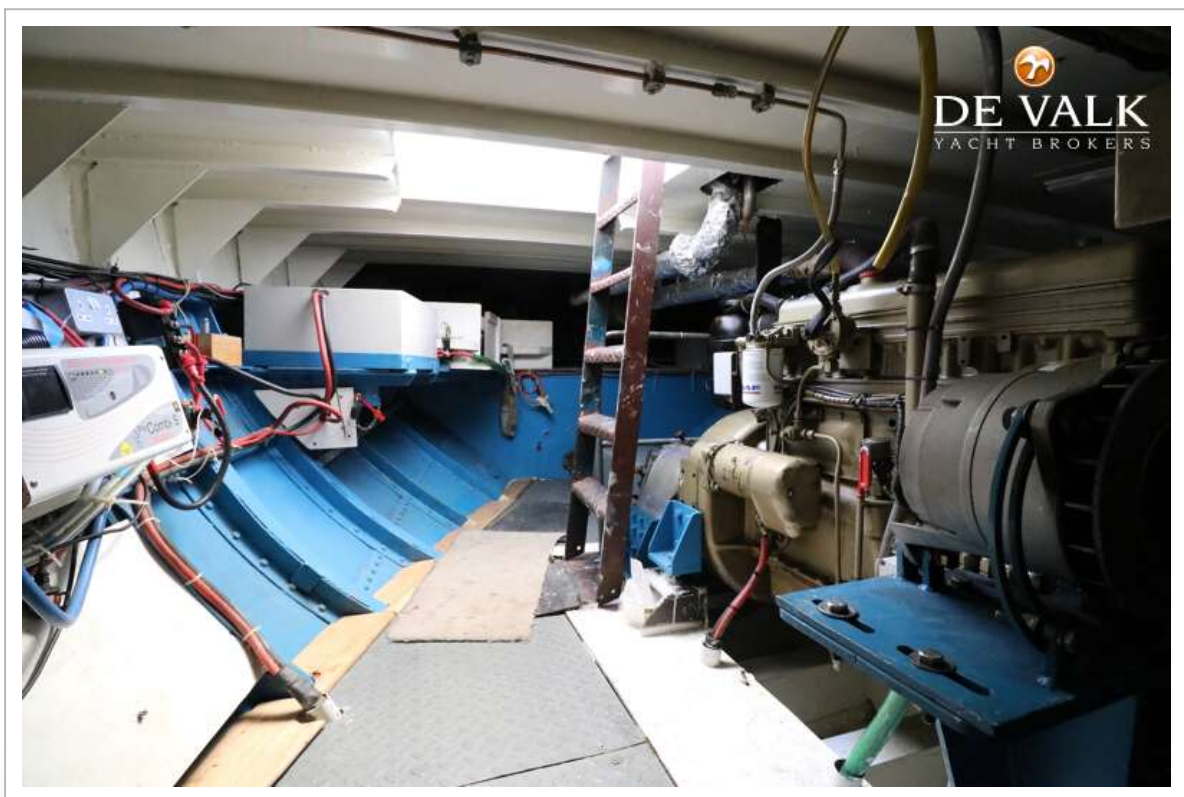


FIGEE STEILSTEVEN

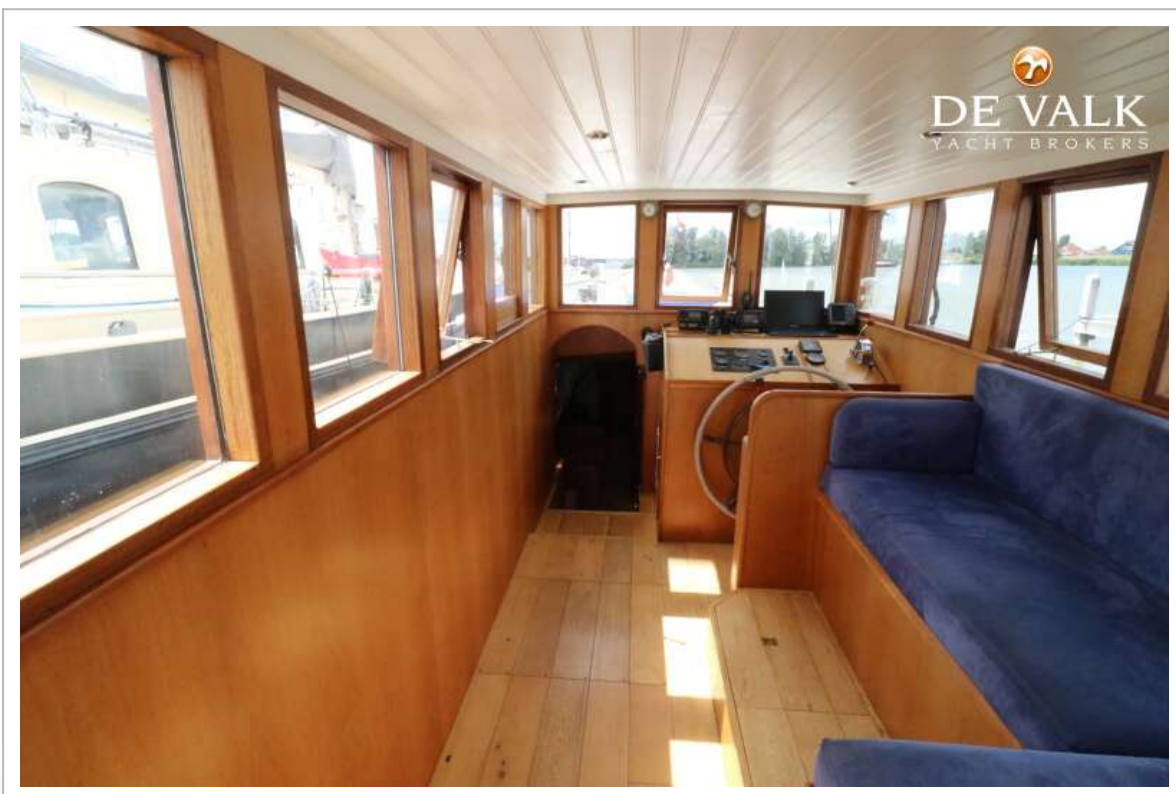




FIGEE STEILSTEVEN



FIGEE STEILSTEVEN



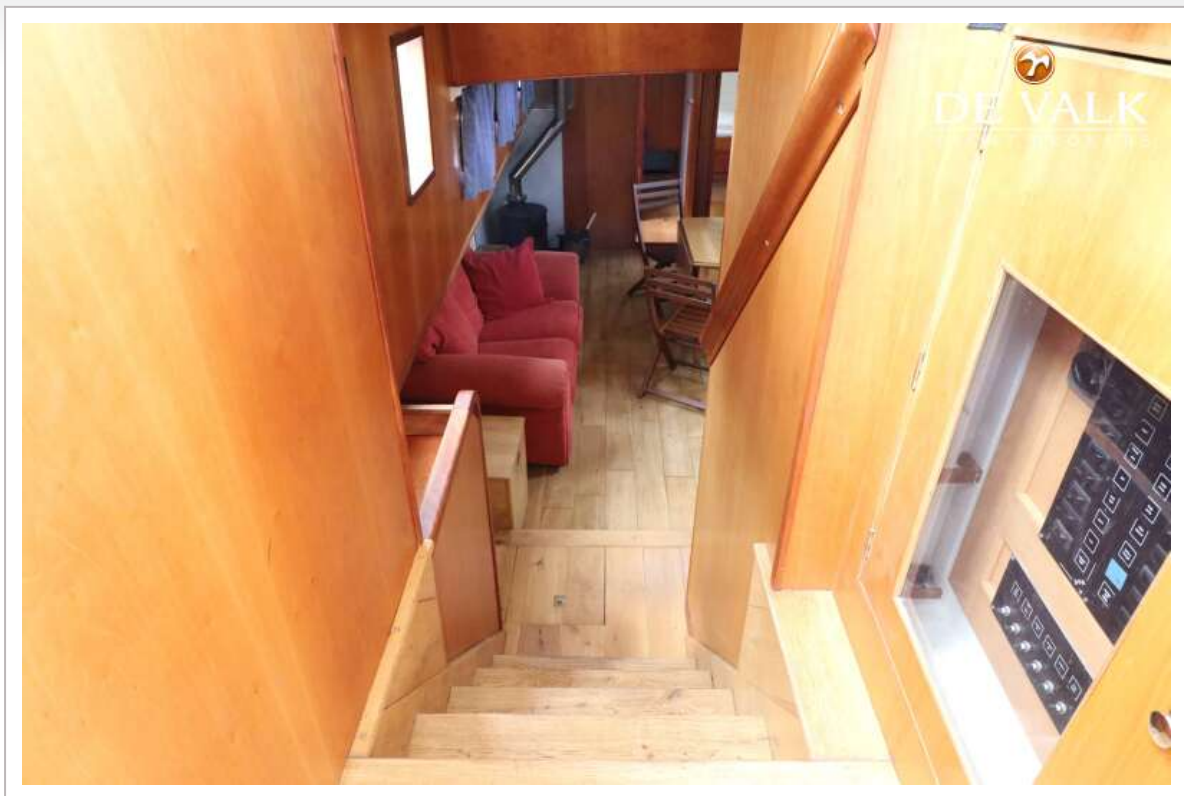
FIGEE STEILSTEVEN



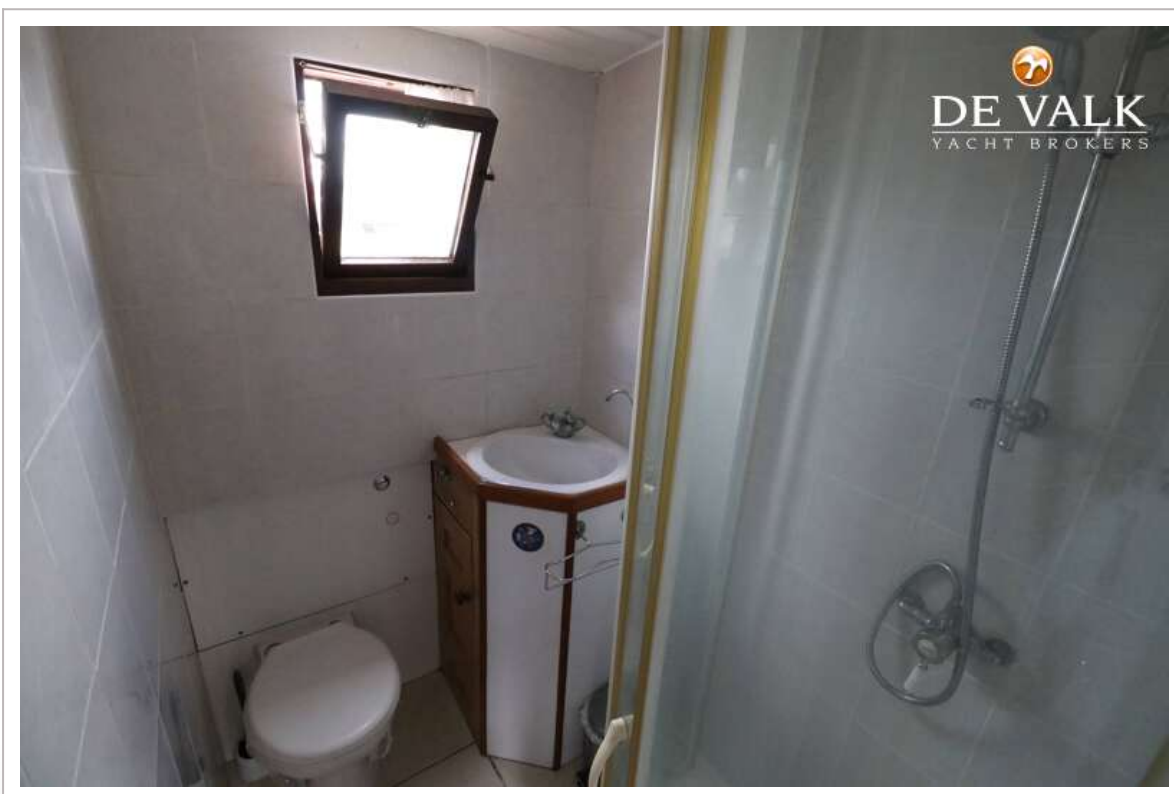
FIGEE STEILSTEVEN



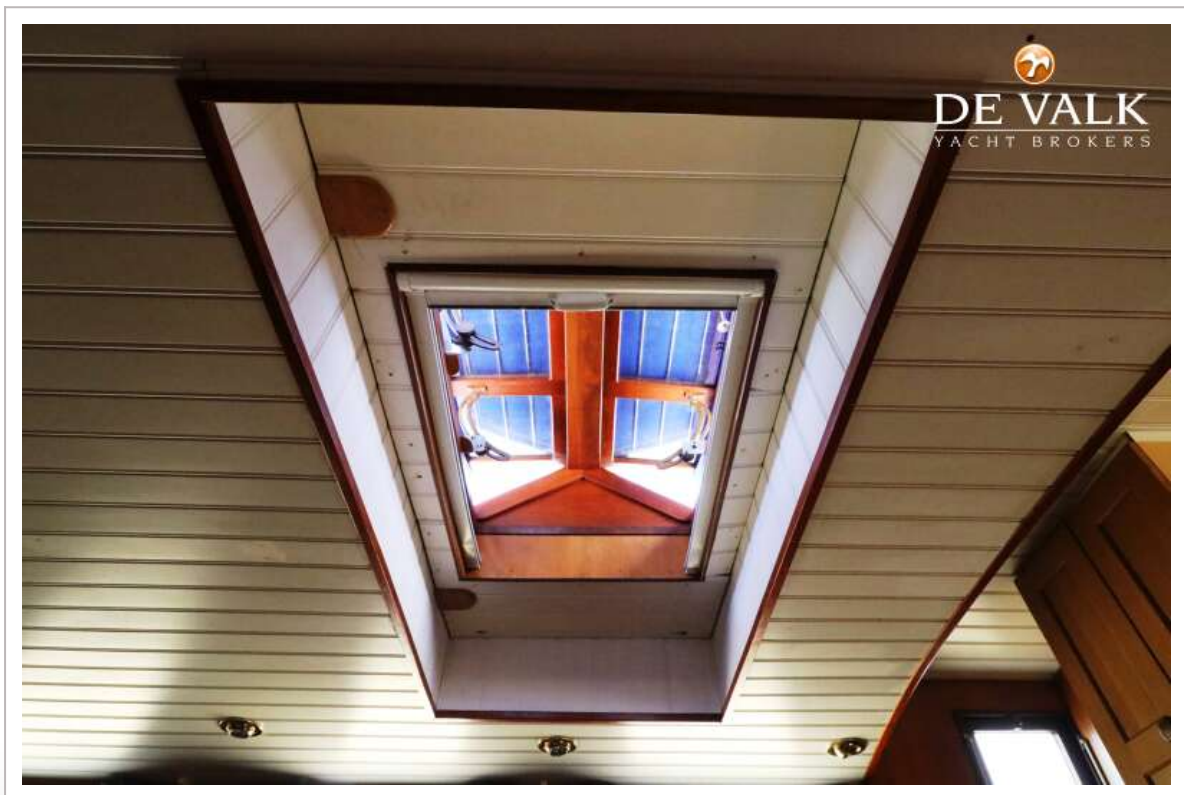
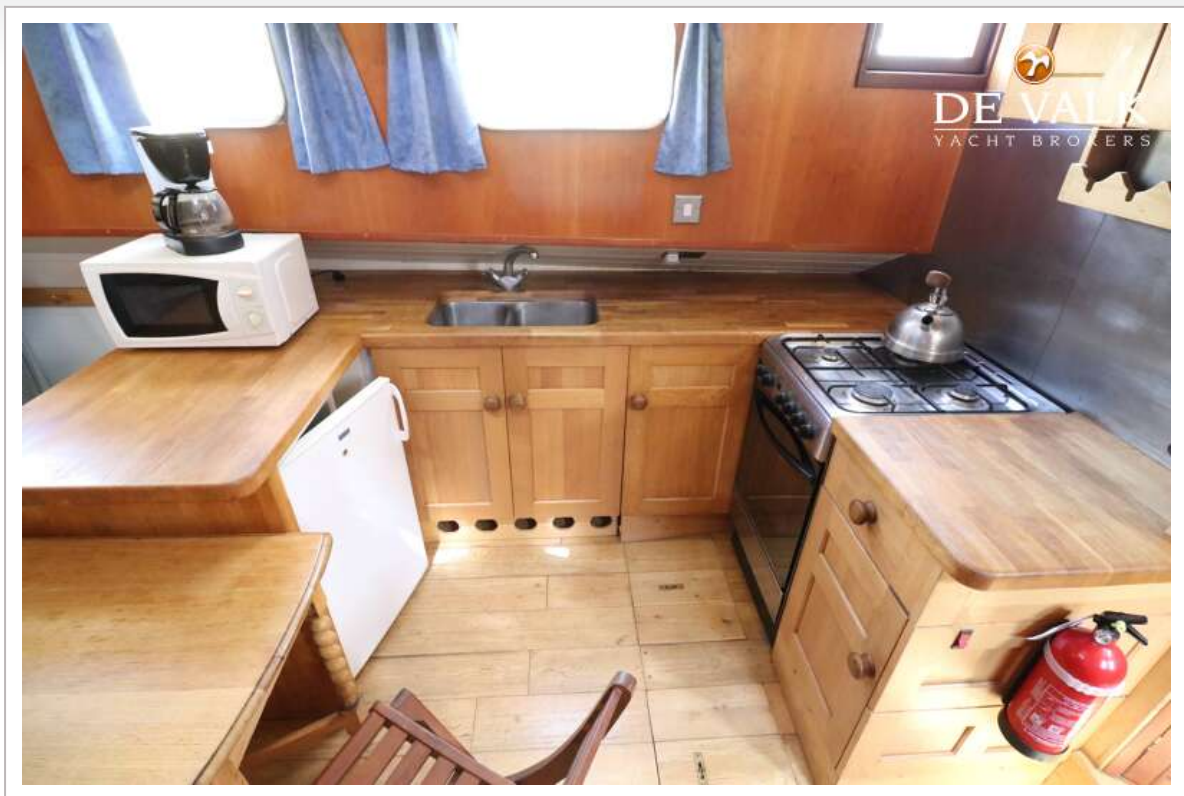
FIGEE STEILSTEVEN



FIGEE STEILSTEVEN



FIGEE STEILSTEVEN



FIGEE STEILSTEVEN



FIGEE STEILSTEVEN



FIGEE STEILSTEVEN



FIGEE STEILSTEVEN

