



DE VALK  
YACHT BROKERS



## DEHLER 37 CRUISING



DE VALK  
YACHT BROKERS

# DEHLER 37 CRUISING

## BROKER'S COMMENTS

The clear Dehler lines of this fast cruiser are supported by the well known building quality of Dehler. Above this you will be surprised by the spacious and classic interior which enables you to stay aboard with large crew. Complete with a new Yanmar 3YM30 27 HP engine of 2012 and two electric winches for sail comfort.

*Reinier van der Wolf*

## SPECIFICATIONS

<b>Dimensions</b>	11.20 x 3.50 x 1.80 (m)	<b>Builder</b>	Dehler Yachtbau GmbH
<b>Built</b>	1997	<b>Cabins</b>	3
<b>Material</b>	GRP	<b>Berths</b>	7
<b>Engine(s)</b>	1 x Yanmar 3YM30 diesel	<b>Hp/Kw</b>	27.00 (hp), 19.85 (kw)
<b>Asking price</b>	sold (VAT )	<b>Lying</b>	at sales office

## CONTACT

<b>Sales office</b>	De Valk Monnickendam B.V.	<b>Telephone</b>	+31 (0)299 65 63 50
<b>Address</b>	Hoogedijk 6 1145 PM Katwoude NL	<b>E-mail</b>	monnickendam@devalk.nl

## DISCLAIMER

These particulars are given in good faith as supplied but cannot be guaranteed.



## GENERAL

Model	DEHLER 37 CRUISING
Type	sailing yacht
LOA (m)	11,20
LWL (m)	9,00
Beam (m)	3,50
Draft (m)	1,80
Air draft (m)	17,00
Headroom (m)	1,85
Year built	1997
Builder	Dehler Yachtbau GmbH
Country	Germany
Designer	Van de Stadt & Partner
Displacement (t)	5,6
Ballast (tonnes)	2,4
CE norm	yacht has been built before June 1998
Hull material	GRP
Hull colour	white
Hull shape	roundbilged
Keel type	fin keel
Superstructure material	GRP
Rubbing strake	rubber
Deck material	GRP
Deck finish	TBS anti-slip profile mats
Superstructure deck finish	yes
Antifouling (year)	Venezian (2014)
Window frame	aluminium
Window material	perspex
Fuel tank (litre)	stainless steel 80
Level indicator (fuel tank)	Moto
Freshwater tank (litre)	polyethylene 240



Level indicator (freshwater)	Wema
Blackwater tank extraction	pump
Wheel steering	Whitlock Marine
Emergency tiller	S/S
Extra info	TBS on deck repainted June 2014. Cockpit finish benches flexi teak, floor anti-slip paint.

## ACCOMMODATION

Cabins	3
Berths	7
Interior	mahogany
Floor	teak and holly
Saloon	yes
Headroom saloon (m)	1,85
Chart table	yes
Aft Cabin	2x
Galley	yes
Countertop	corian
Sink	stainless steel 2x
Cooker	calor gas Triton Belco
Oven	yes
Fridge	with freezer compartment Tec
Hot water system	220V + engine Boiler
Water pressure system	electrical Shurflo
Owners cabin	v-bed
Bed length (m)	1,96
Wardrobe	
Bathroom	en suite
Toilet	Par
Toilet system	manual
Wash basin	



Shower	
Guest cabin 1	double bed
Bed length (m)	2,10 x 1,35
Wardrobe	yes
Bathroom	shared
Toilet	Par
Toilet system	manual
Wash basin	in the bathroom
Guest cabin 2	double bed
Bed length (m)	2,10 x 1,35
Wardrobe	yes

## MACHINERY

No of engines	1
Make	Yanmar
Type	3YM30
HP	27,00
kW	19,85
Fuel	diesel
Year installed	2012
Maximum speed (kn)	7
Cruising speed (kn)	6
Engine hours	110
Engine cooling system	freshwater heat exchanger
Drive	shaft
Engine controls	bowden cable
Gearbox	Yanmar
Exhaust	watercooled
Propeller type	fixed
Propeller blades	3
Propeller shaft material	stainless steel



Shaft lubrication	water
Manual bilge pump	in cockpit
Electric bilge pump	yes
Electrical installation	12V/220V
Start battery	1x 77 Ah
Service battery	2x 140 Ah
Battery monitor	GBE PT532 (charttable)
Battery charger	yes

## NAVIGATION

Compass	Whitlock
Windset	Raymarine ST60 wind
VHF	Shipmate RS 8300 (no Atis)
VHF handheld	with Atis
GPS	Philips AP Navigator MK9 GPS-D
Plotter	Geonav (manual)

## EQUIPMENT

Sprayhood	yes
Bimini	yes
Sun awning	not original
Cockpit table	yes
Boarding ladder	stainless steel
Deck shower	in cockpit
Anchor	Bruce
Anchor chain	yes
Windlass	electrical Simpson Lawrence
Dinghy	Sportmarine (alu. bottom)
Outboard	Mercury (old)
Sea railing	stainless steel
Grab rail (superstructure)	aluminium



Pushpit	S/S
Pulpit	S/S
Lifejackets	yes
Lifebuoy	yes
Radar reflector	yes
Fenders	yes
Mooring lines	yes
Radio-cd player	Alpine
Cockpit speakers	yes
Speakers in salon	Blaupunkt
Clock - barometer	yes
Fire extinguisher	yes
Latest extinguisher survey	must be proofed
Extra info	Plastimo rescue sling.

## RIGGING

Rigging	sloop
Standing rigging	wire
Brand mast	Dehler Yachten
Material mast	aluminium
Spreaders	2x 2
Mainsail	North Sails (2011)
Mainsail cover	Maindrop system
Jib	yes
Genoa	yes
Genoa furler	Furlex
Gennaker	yes
Backstay adjuster	tackle
Boomvang	mechanical Sparcraft
Genoa sheetwinches	2x Lewmar 44 ST elect.
Halyard winches	1x Lewmar 30 ST



Winchcovers

blue

Gennaker pole

aluminium Dehler Yachten





# DEHLER 37 CRUISING



# DEHLER 37 CRUISING





# DEHLER 37 CRUISING



# DEHLER 37 CRUISING





# DEHLER 37 CRUISING

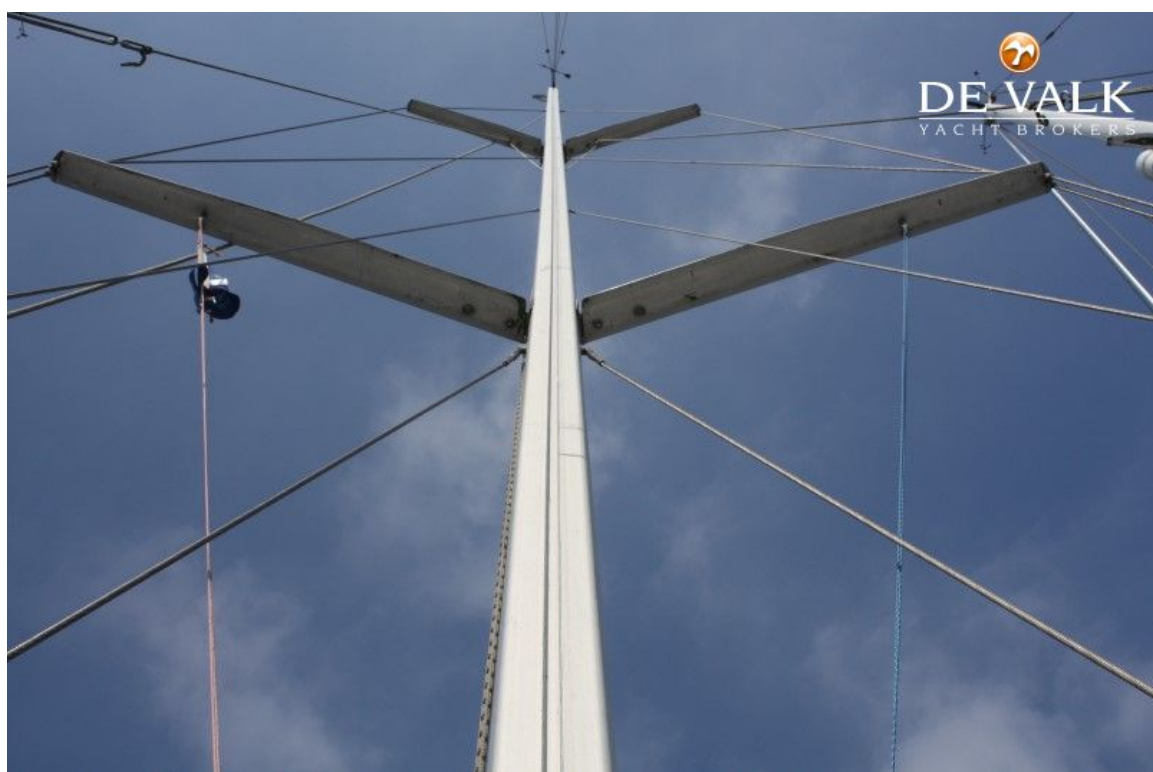


# DEHLER 37 CRUISING

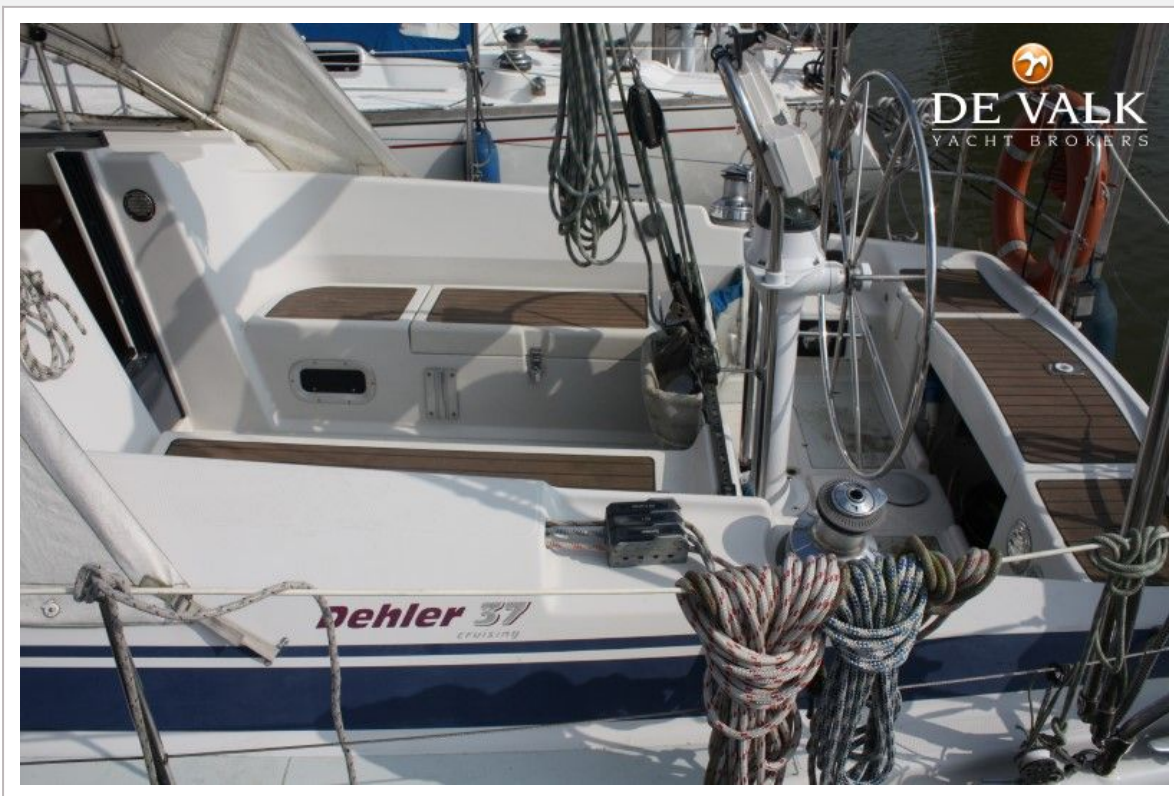




# DEHLER 37 CRUISING



# DEHLER 37 CRUISING





## DEHLER 37 CRUISING



# DEHLER 37 CRUISING





## DEHLER 37 CRUISING

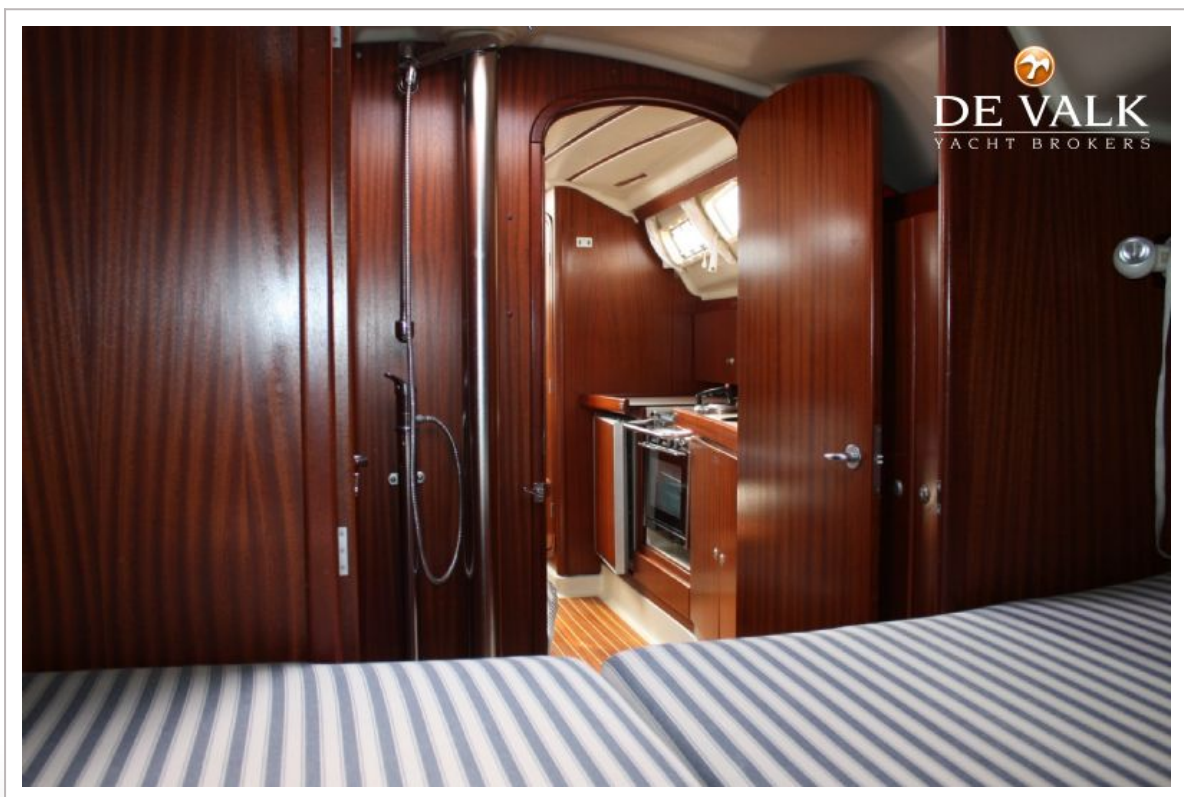
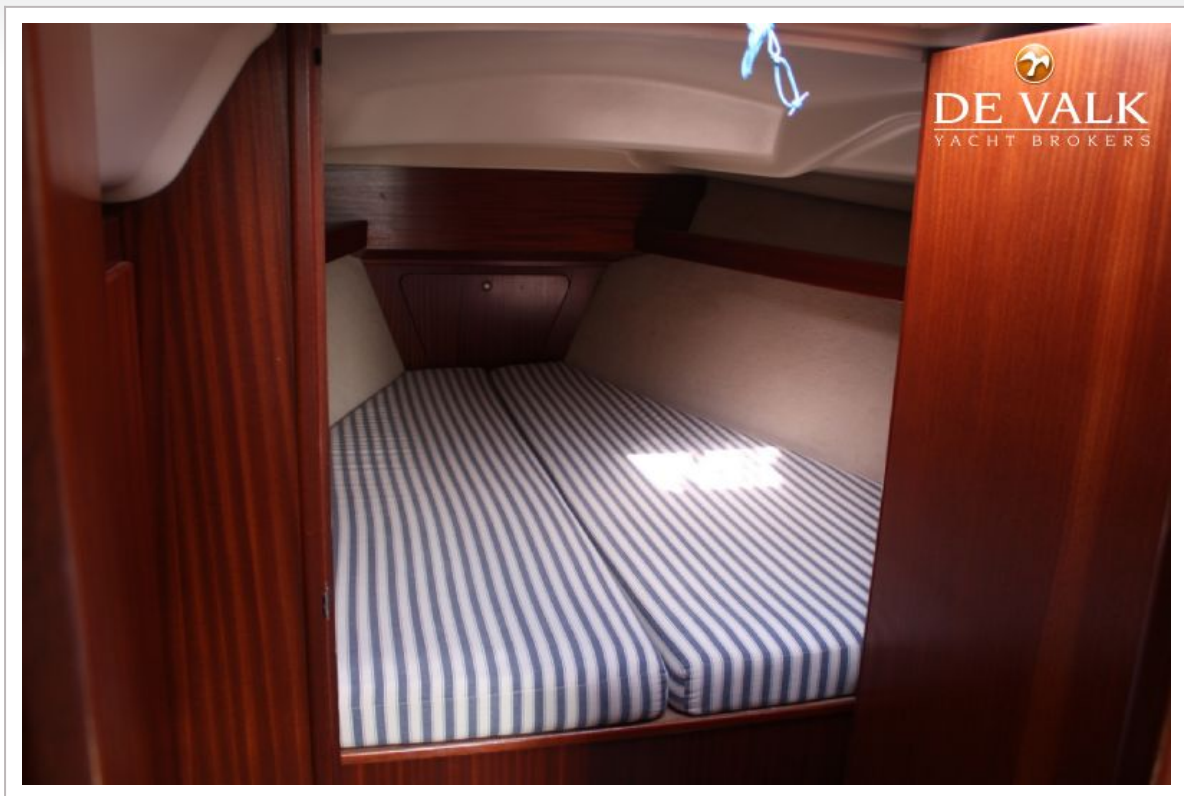


# DEHLER 37 CRUISING

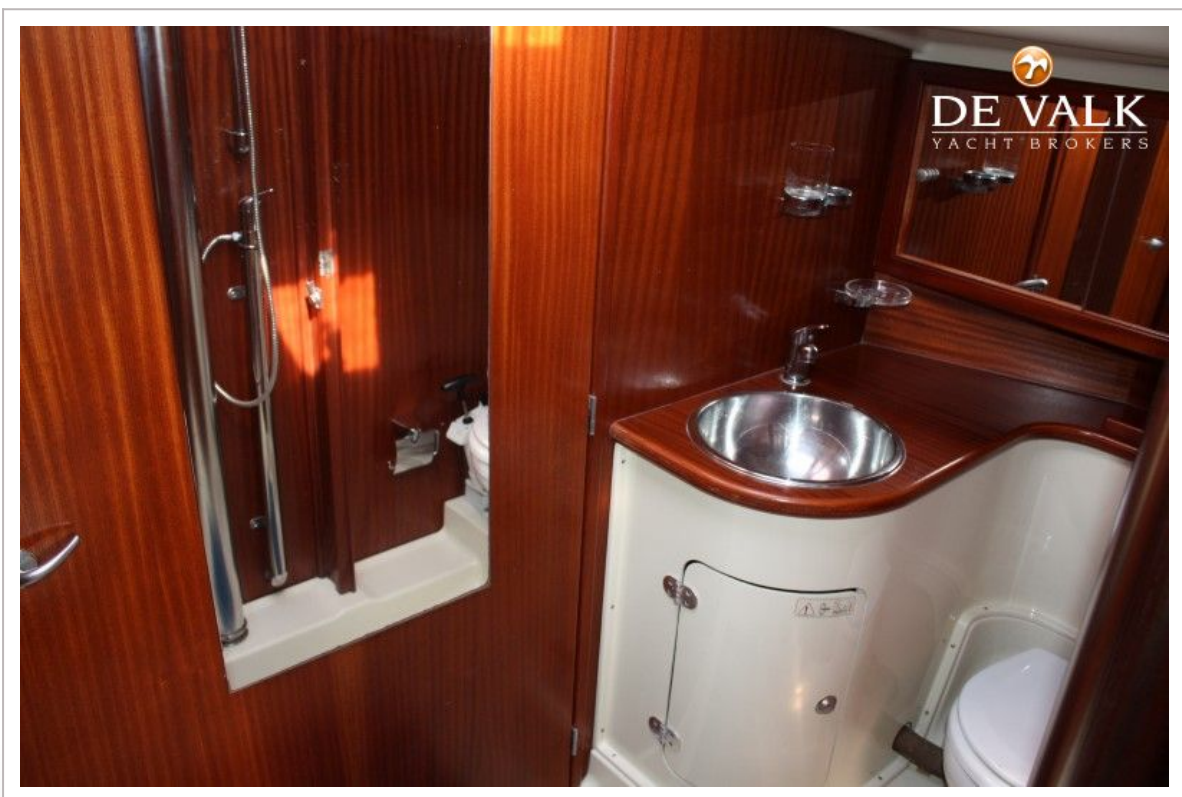




## DEHLER 37 CRUISING

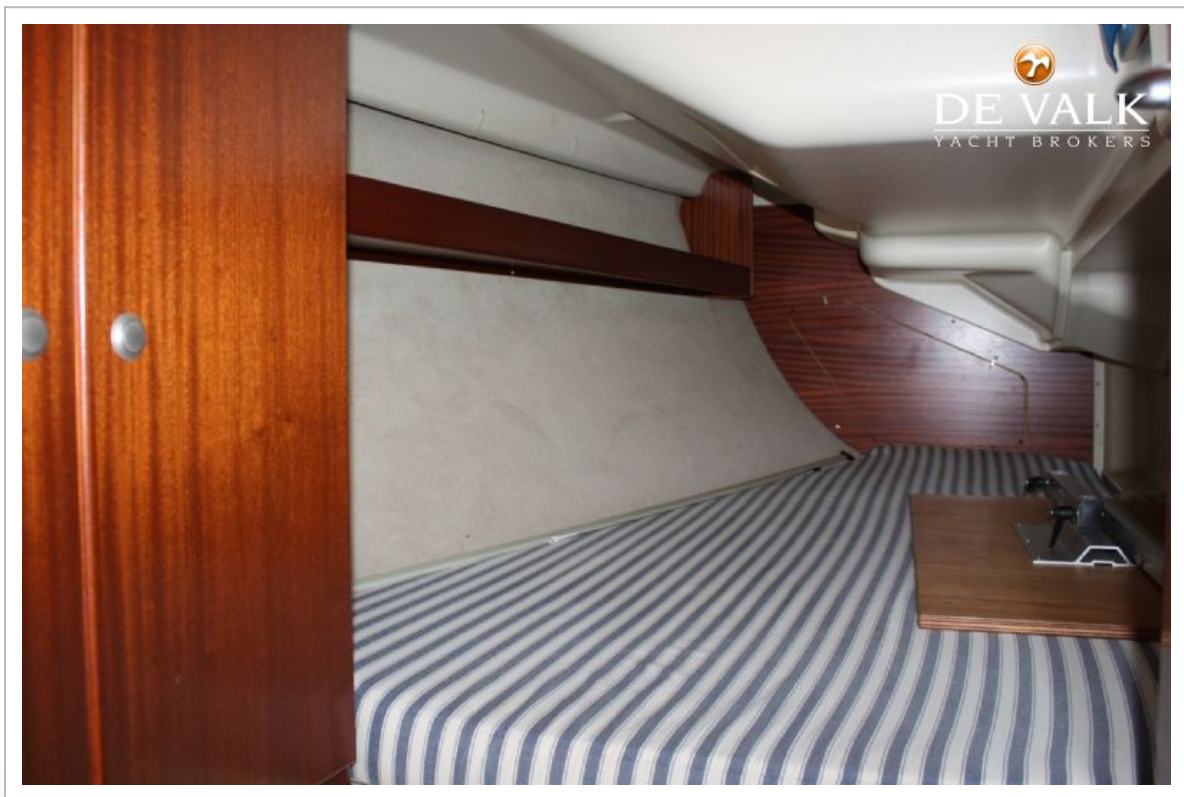
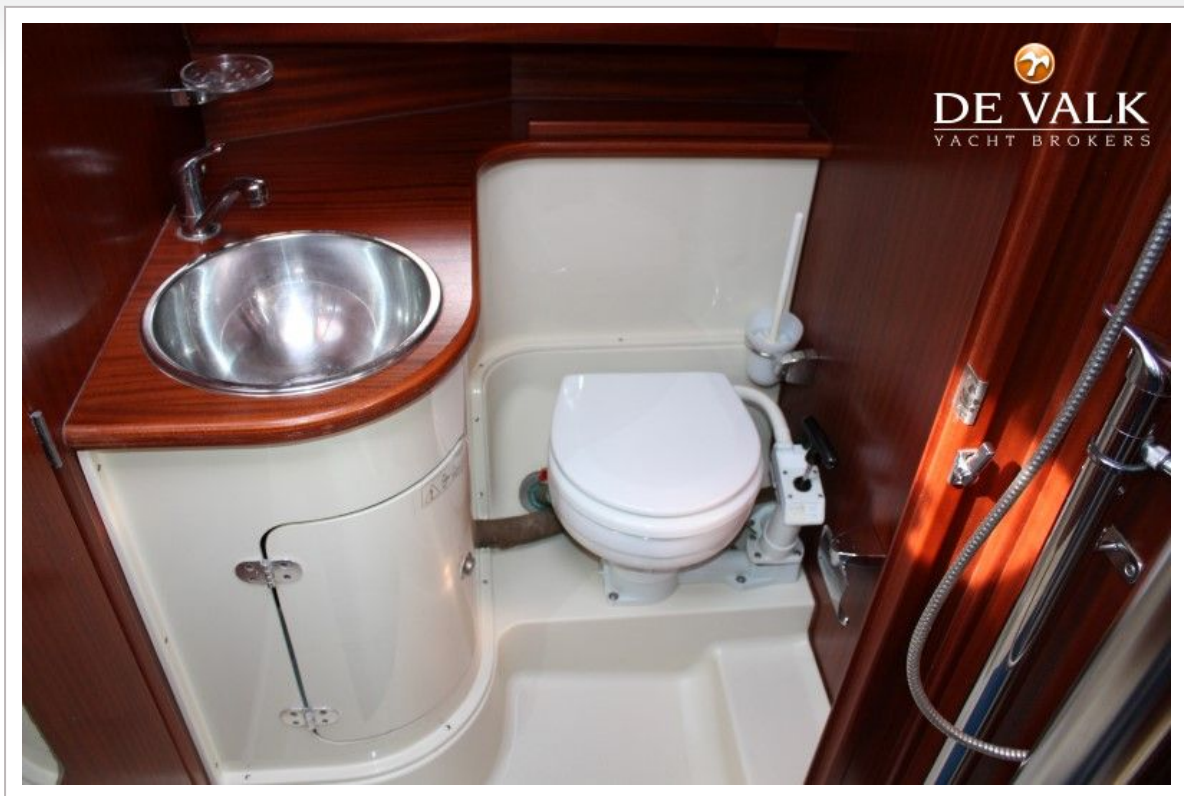


## DEHLER 37 CRUISING

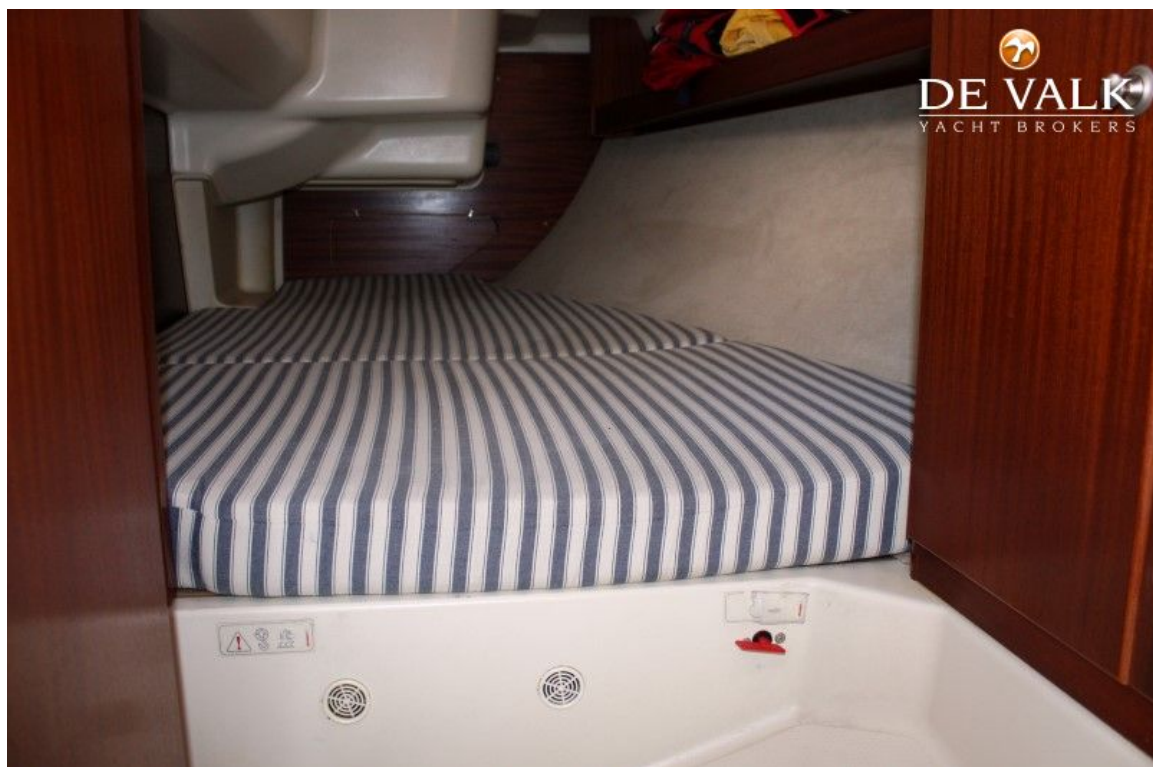




## DEHLER 37 CRUISING



## DEHLER 37 CRUISING





## DEHLER 37 CRUISING

